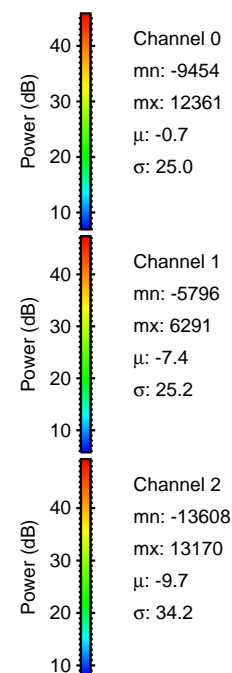
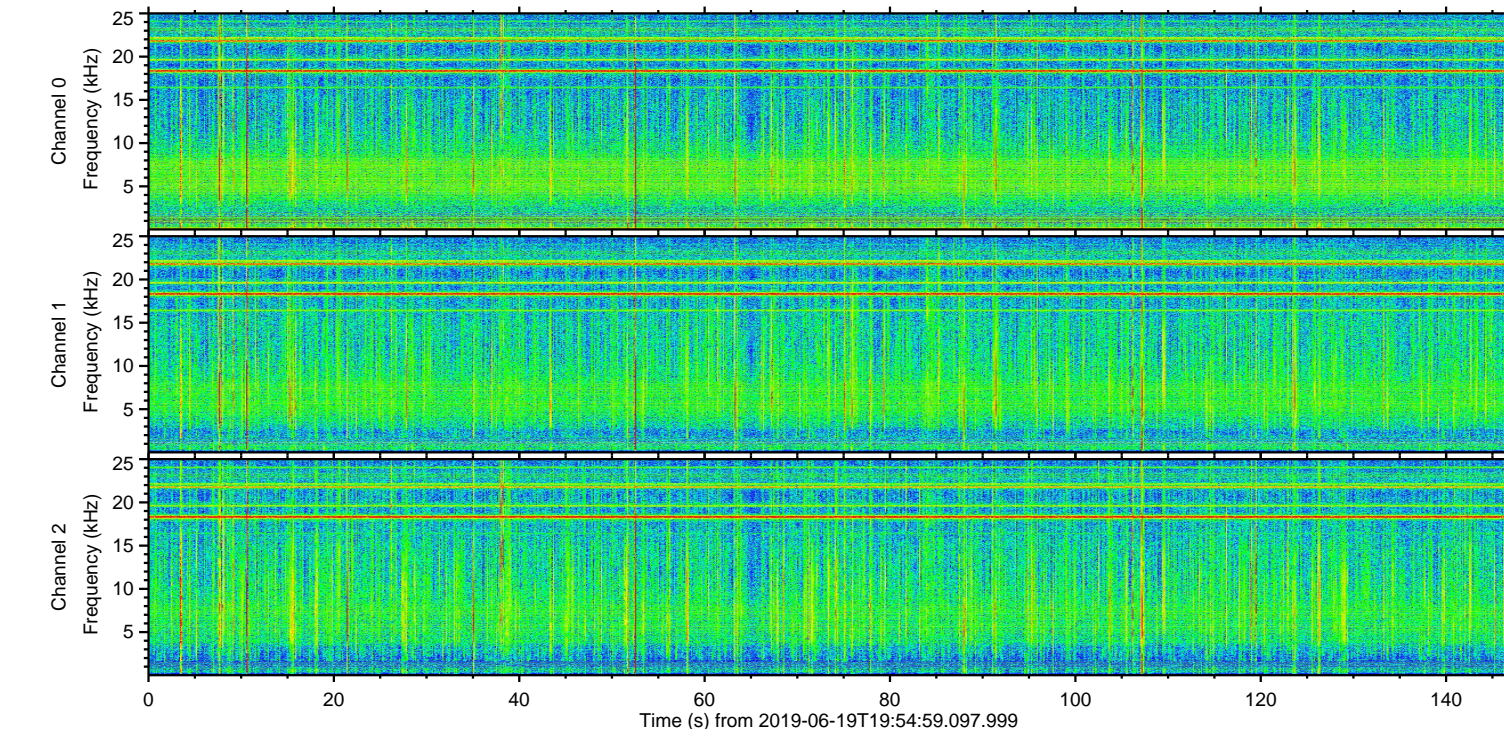
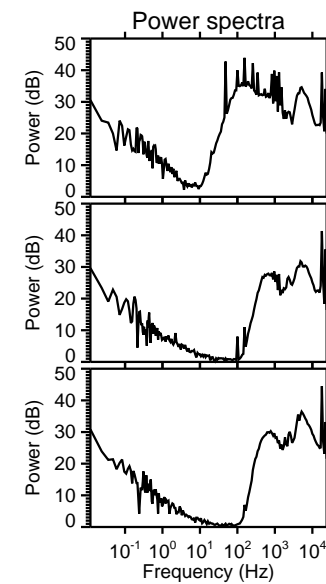
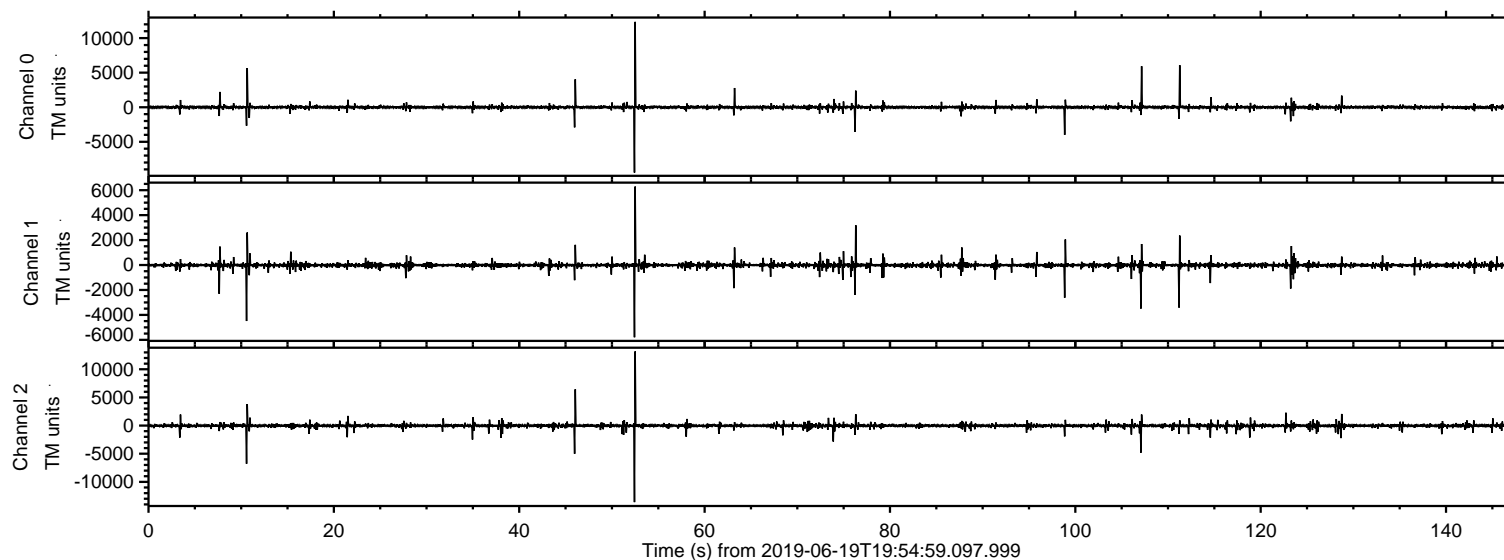
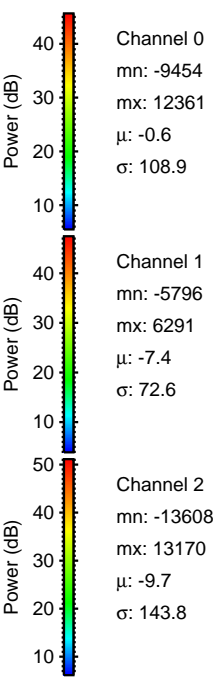
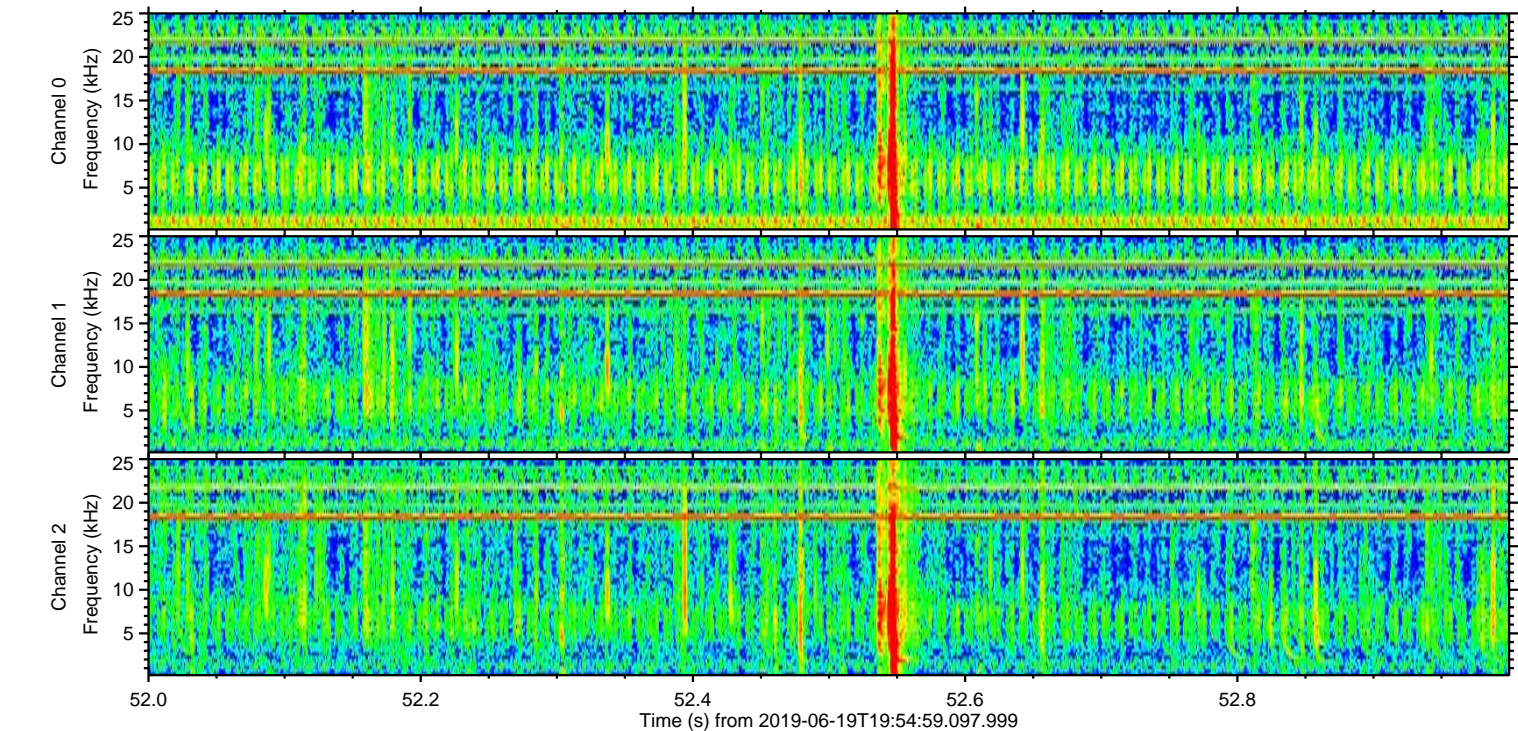
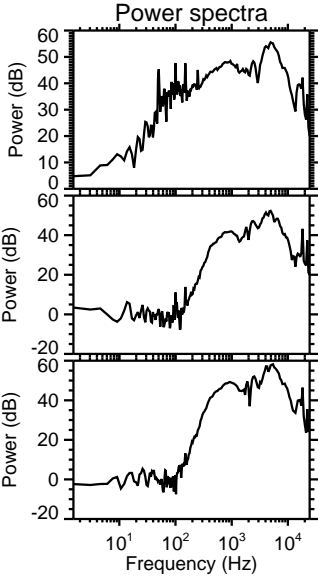
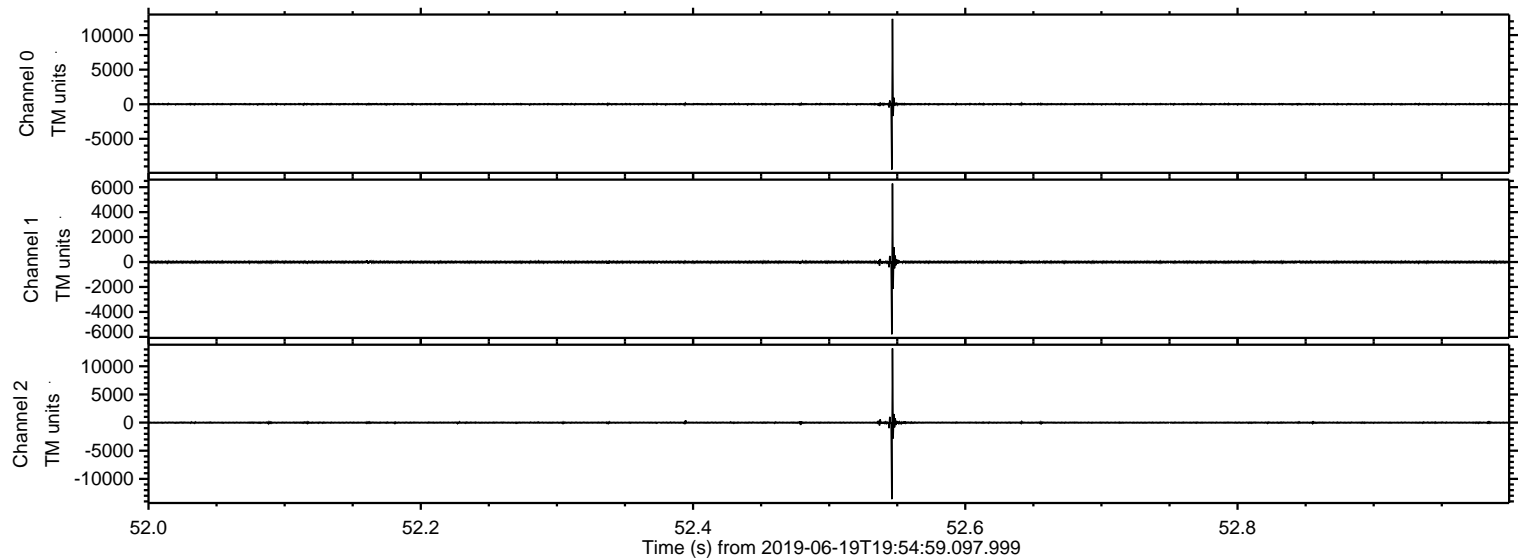


ELMAVAN 3D WAVEFORMS (Measured data sampled at 50 kHz) 51000 packets of 144 samples from 2019-06-19T19:54:59.997.999.

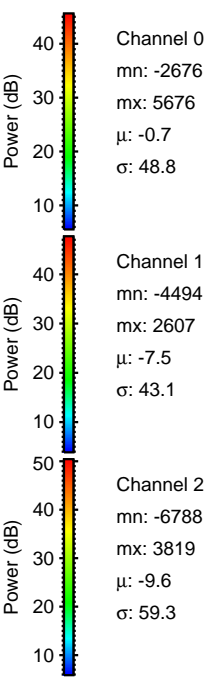
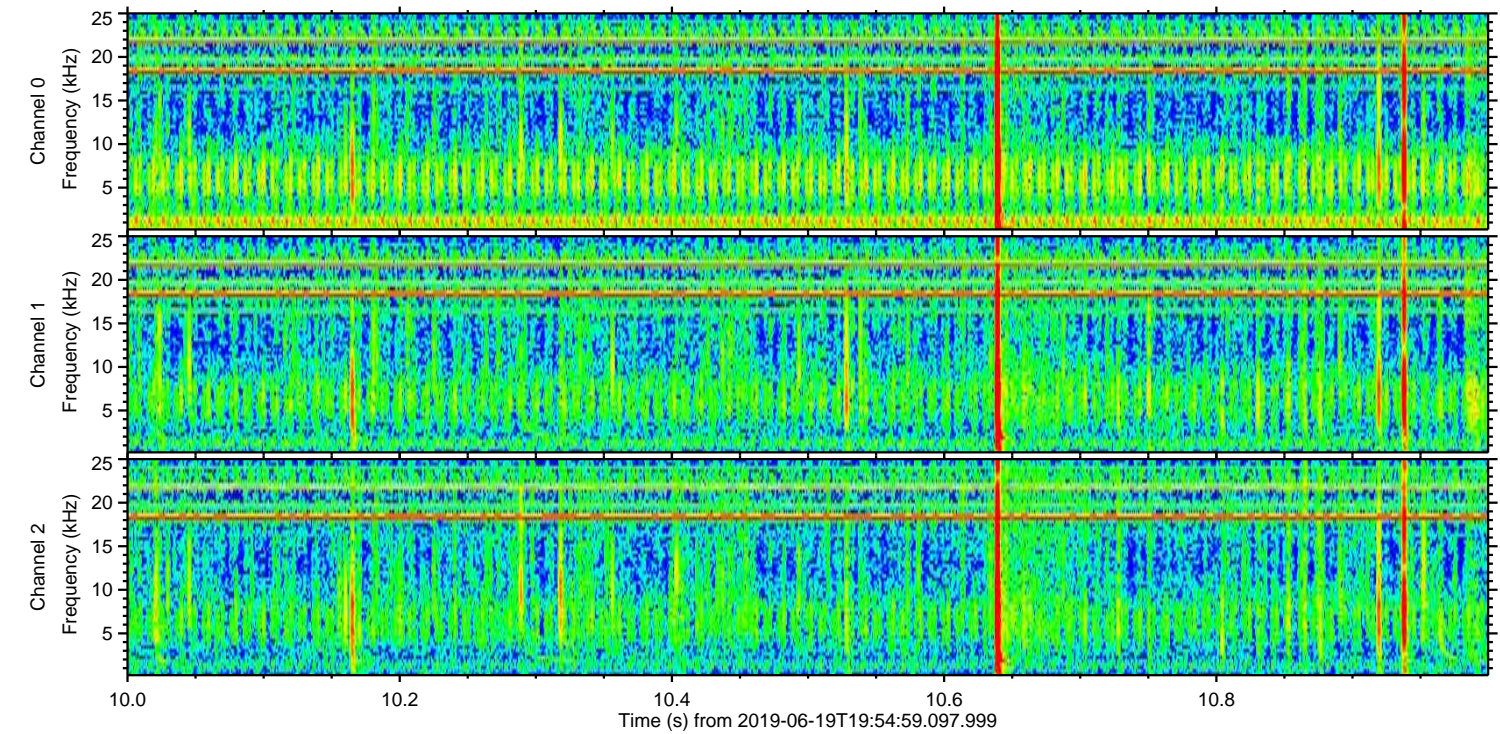
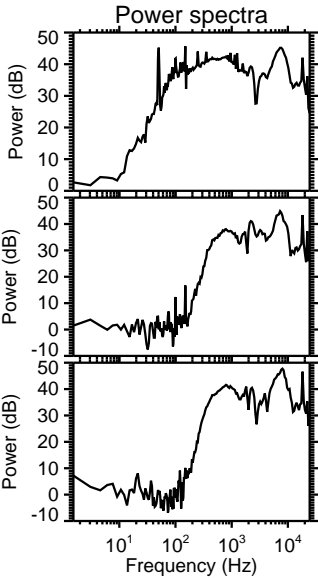
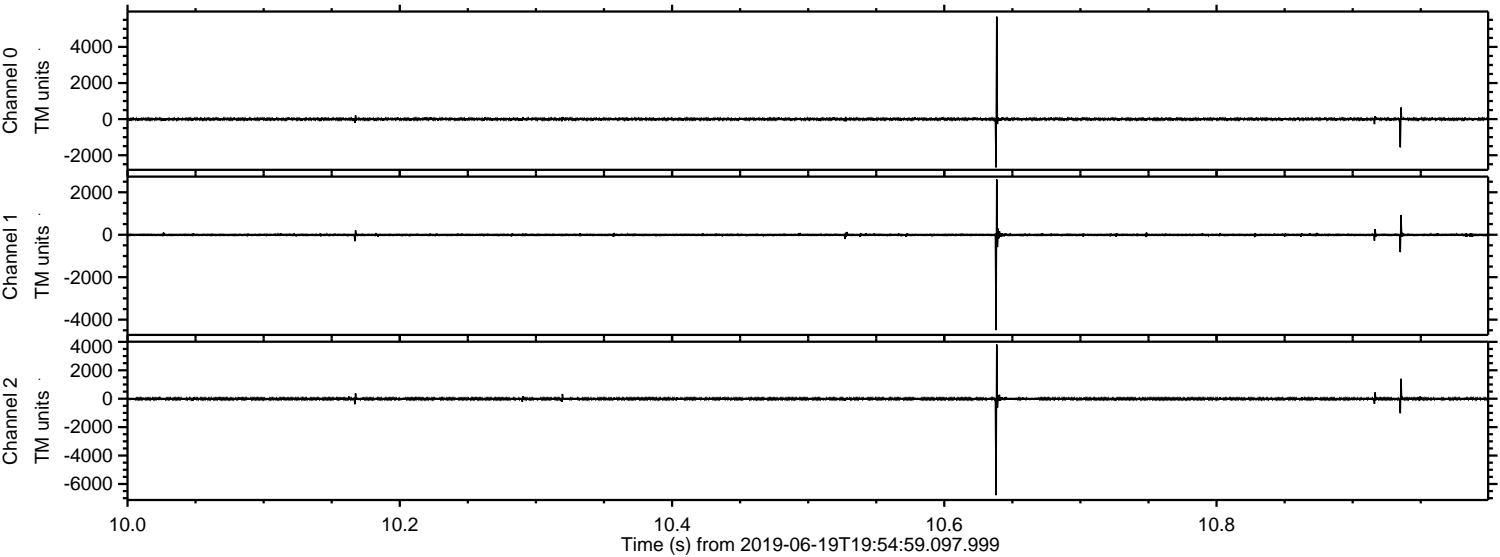
Processed Wed Jun 19 22:02:22 2019 by ELM ver.2012-10-06 from 001__elm20190619_195458__dat00.bin



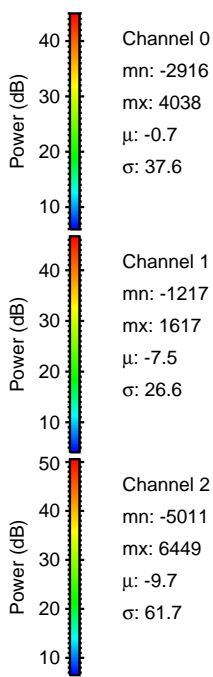
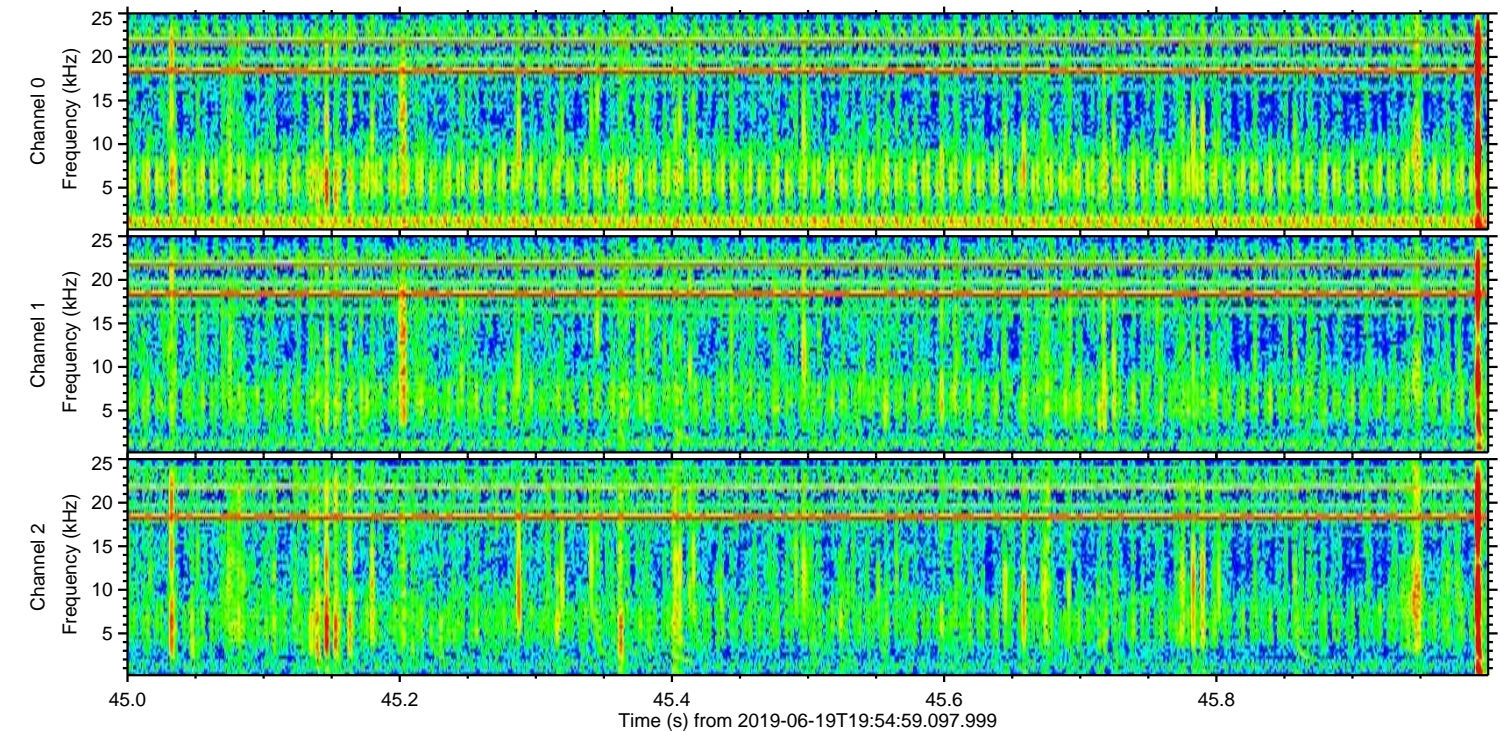
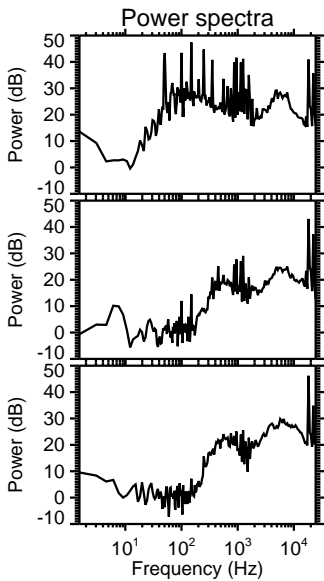
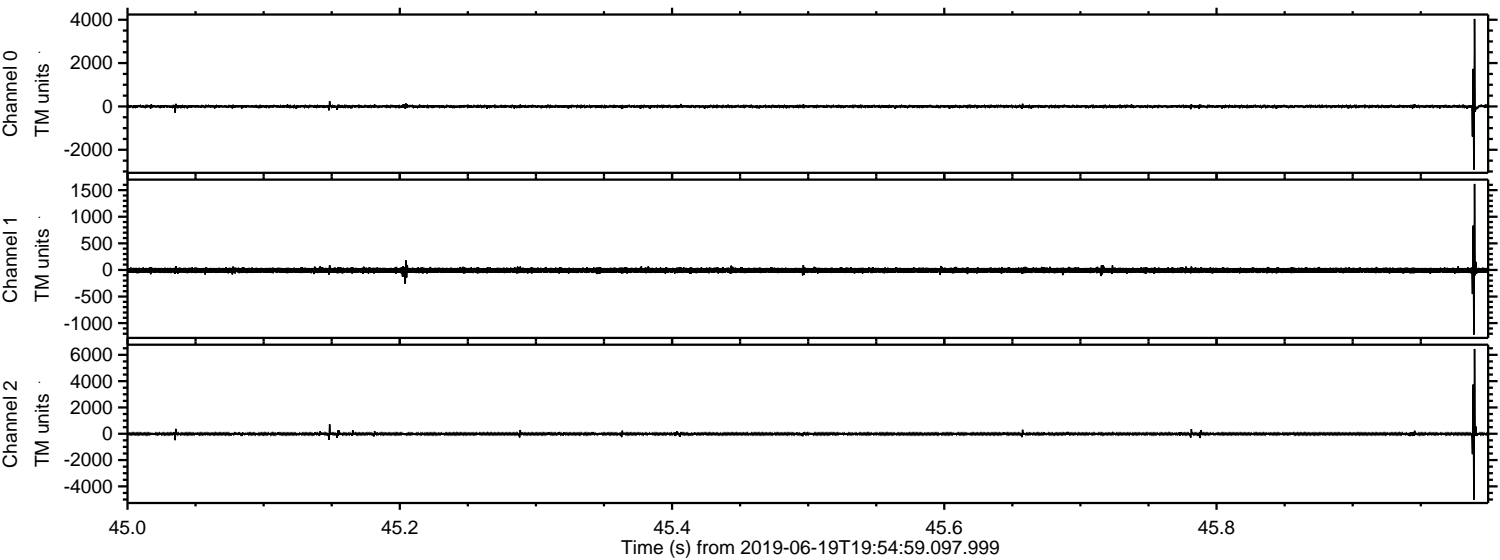
Processed Wed Jun 19 22:02:32 2019 by ELM ver.2012-10-06 from 001__elm20190619_195458__dat00.bin



Processed Wed Jun 19 22:02:33 2019 by ELM ver.2012-10-06 from 001__elm20190619_195458__dat00.bin



Processed Wed Jun 19 22:02:34 2019 by ELM ver.2012-10-06 from 001__elm20190619_195458__dat00.bin



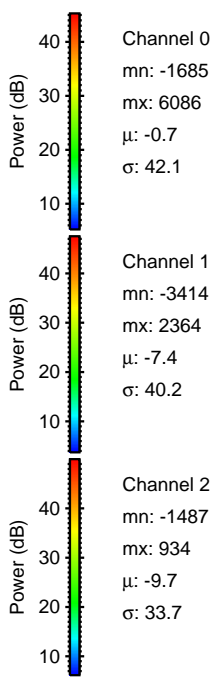
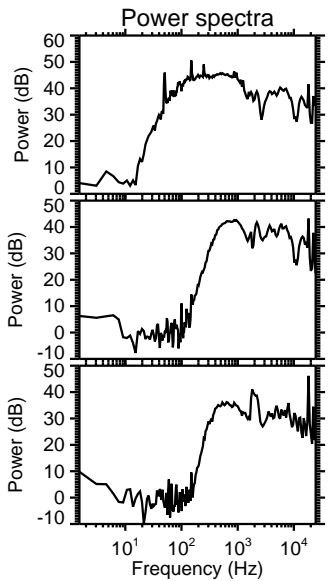
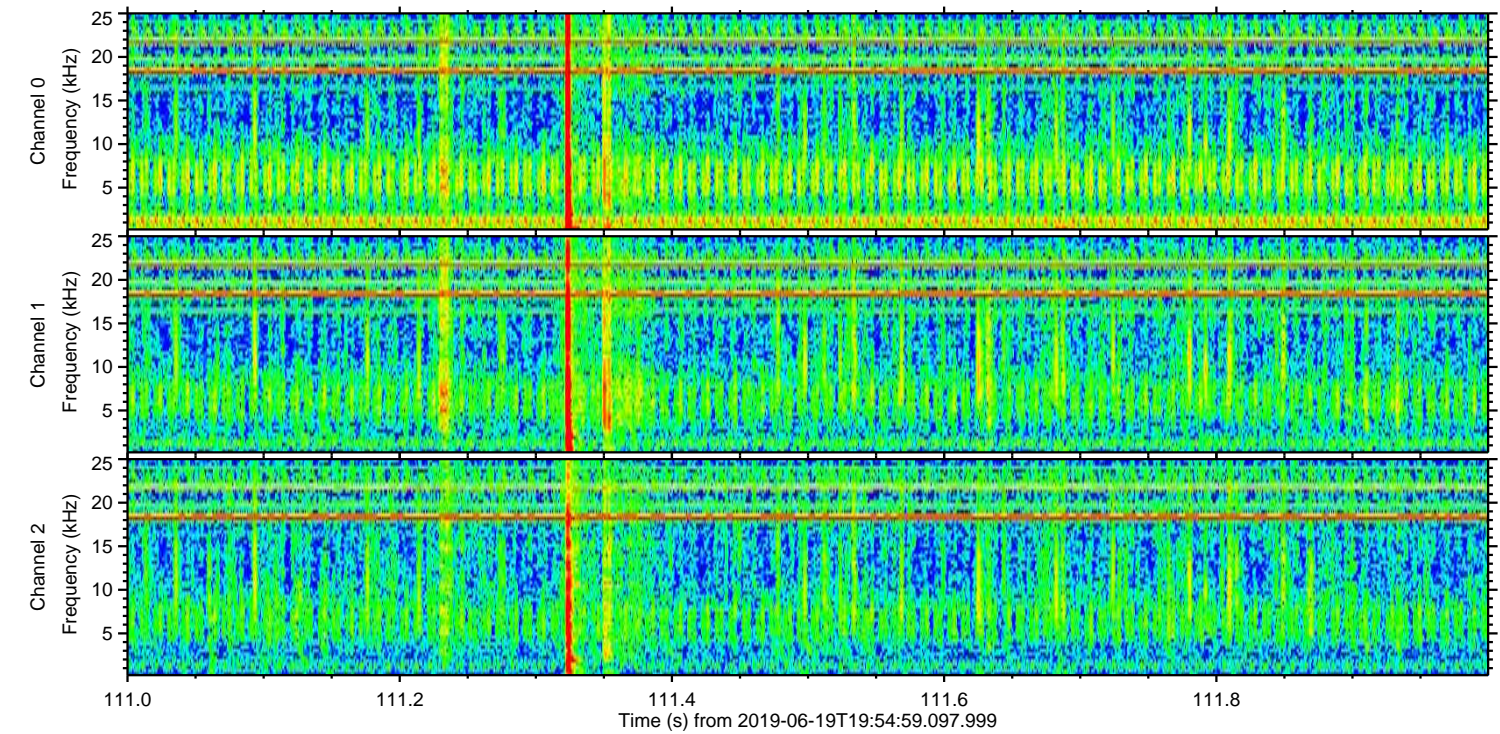
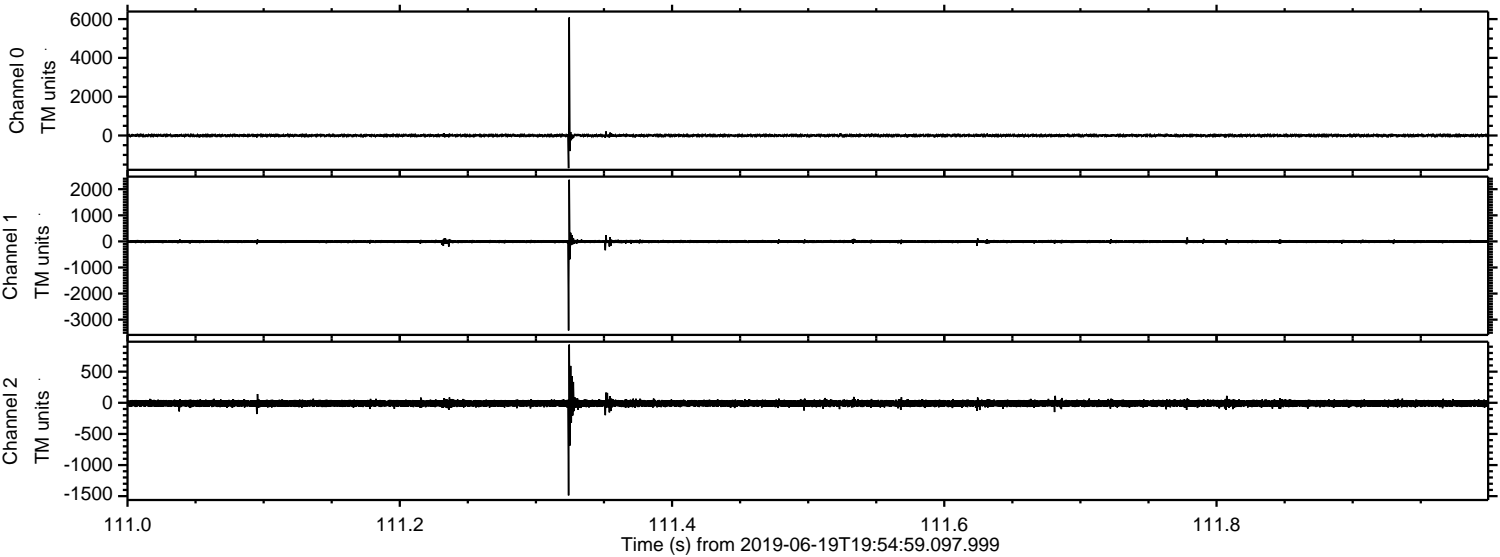
Channel 0
mn: -2916
mx: 4038
 μ : -0.7
 σ : 37.6

Channel 1
mn: -1217
mx: 1617
 μ : -7.5
 σ : 26.6

Channel 2
mn: -5011
mx: 6449
 μ : -9.7
 σ : 61.7

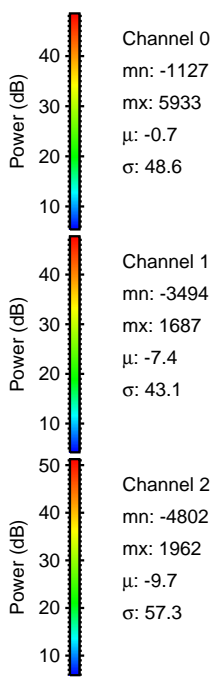
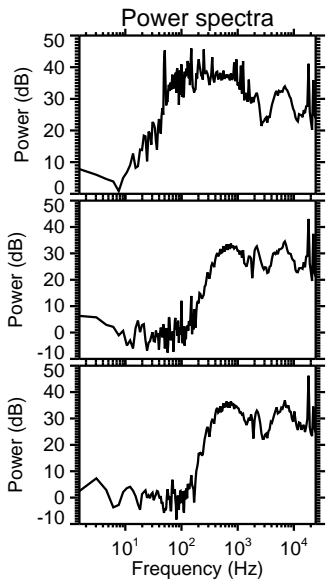
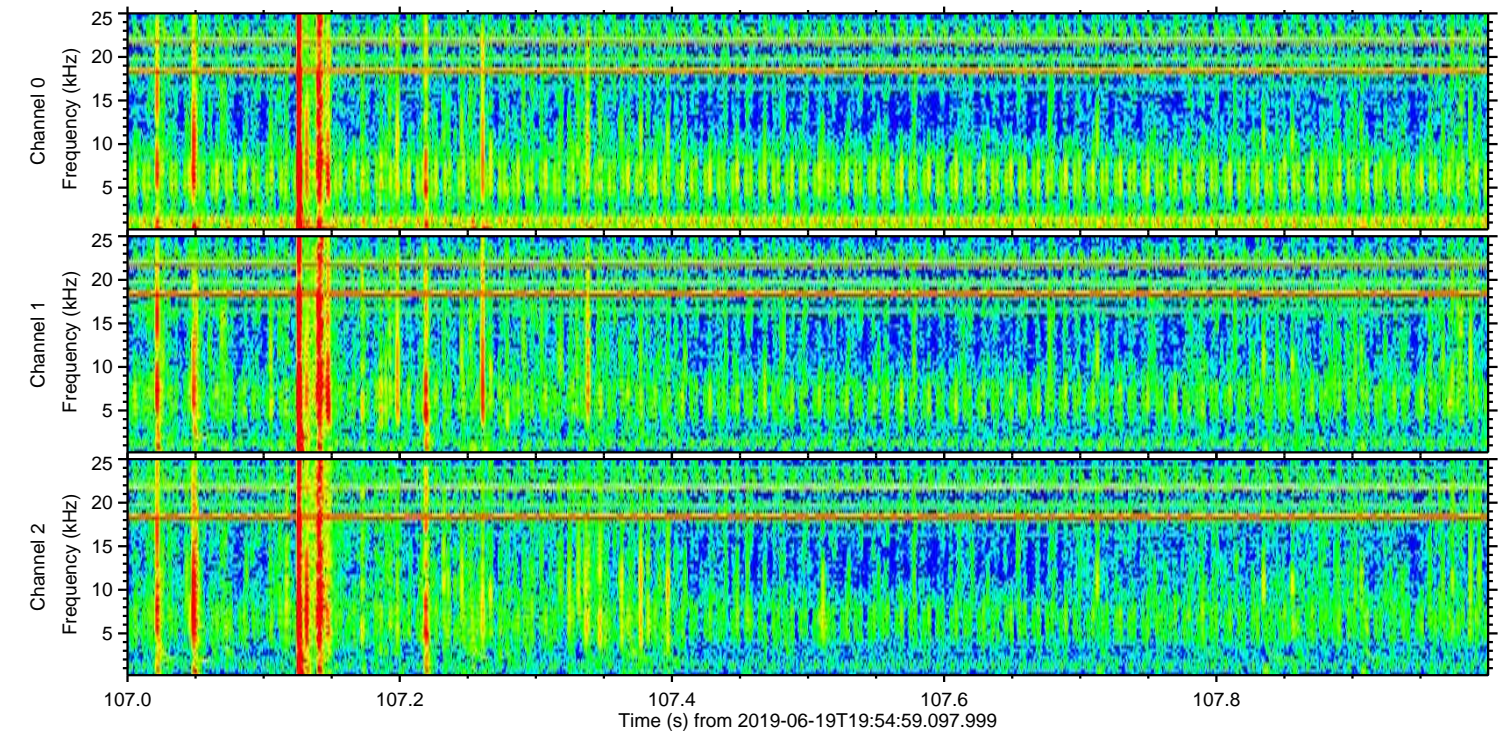
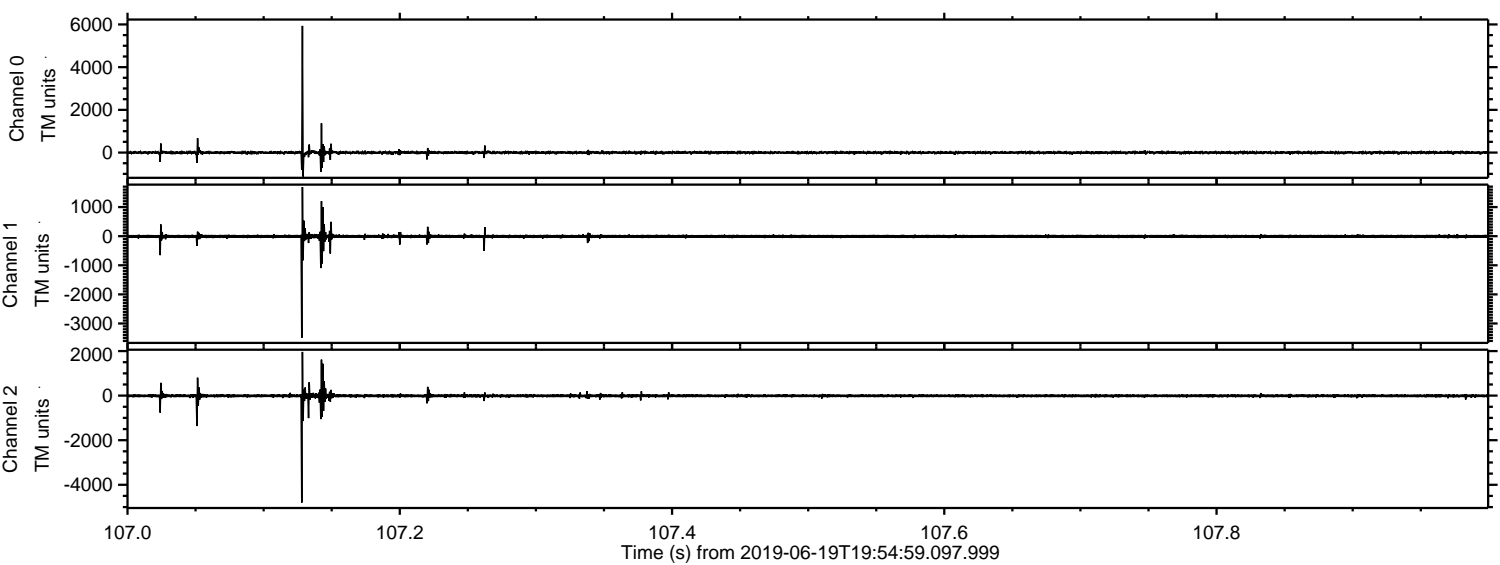
ELMAVAN 3D WAVEFORMS (Measured data sampled at 50 kHz) 51000 packets of 144 samples from 2019-06-19T19:54:59.097.999. Part 112/147

Processed Wed Jun 19 22:02:34 2019 by ELM ver.2012-10-06 from 001__elm20190619_195458__dat00.bin

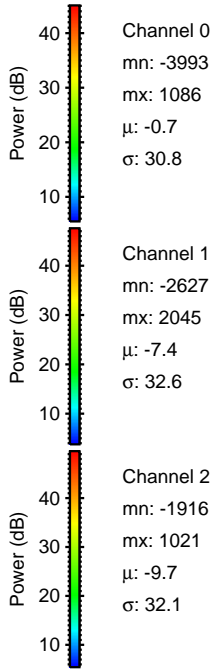
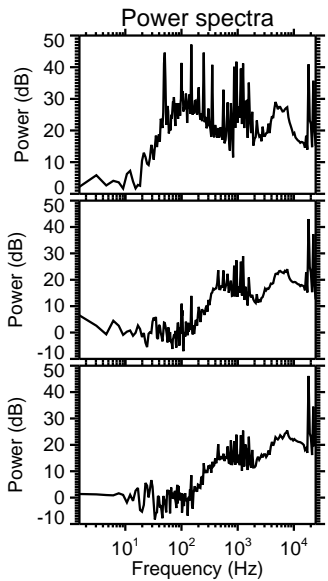
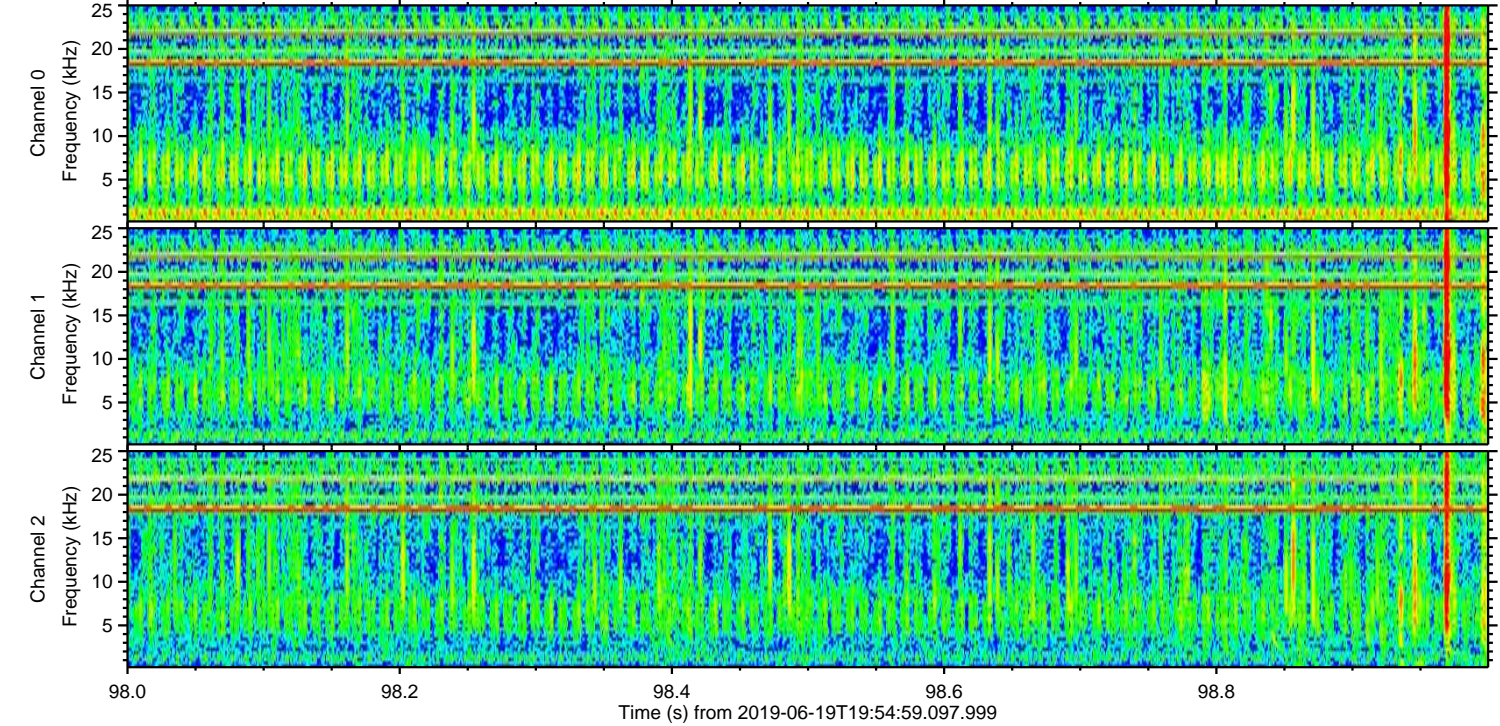
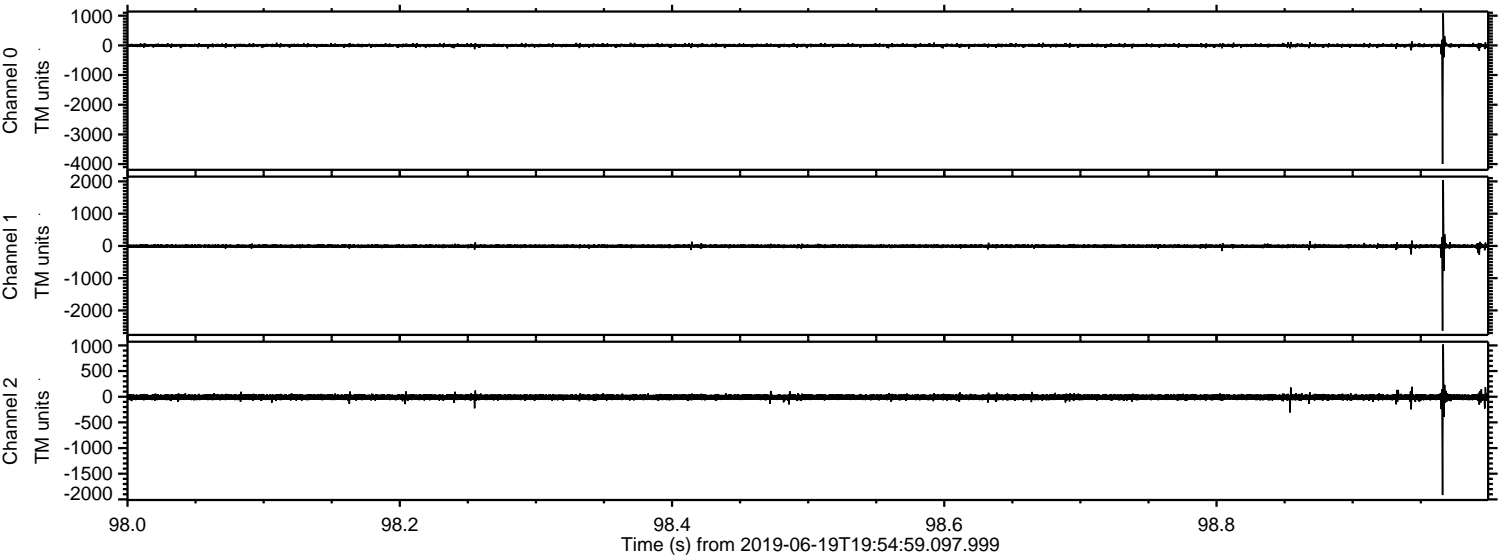


ELMAVAN 3D WAVEFORMS (Measured data sampled at 50 kHz) 51000 packets of 144 samples from 2019-06-19T19:54:59.097.999. Part 108/147

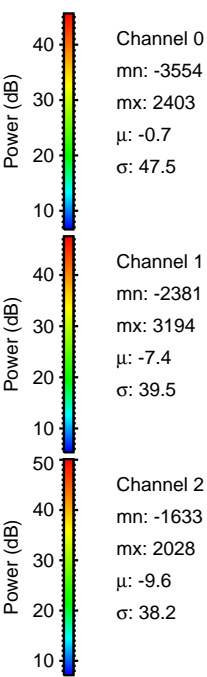
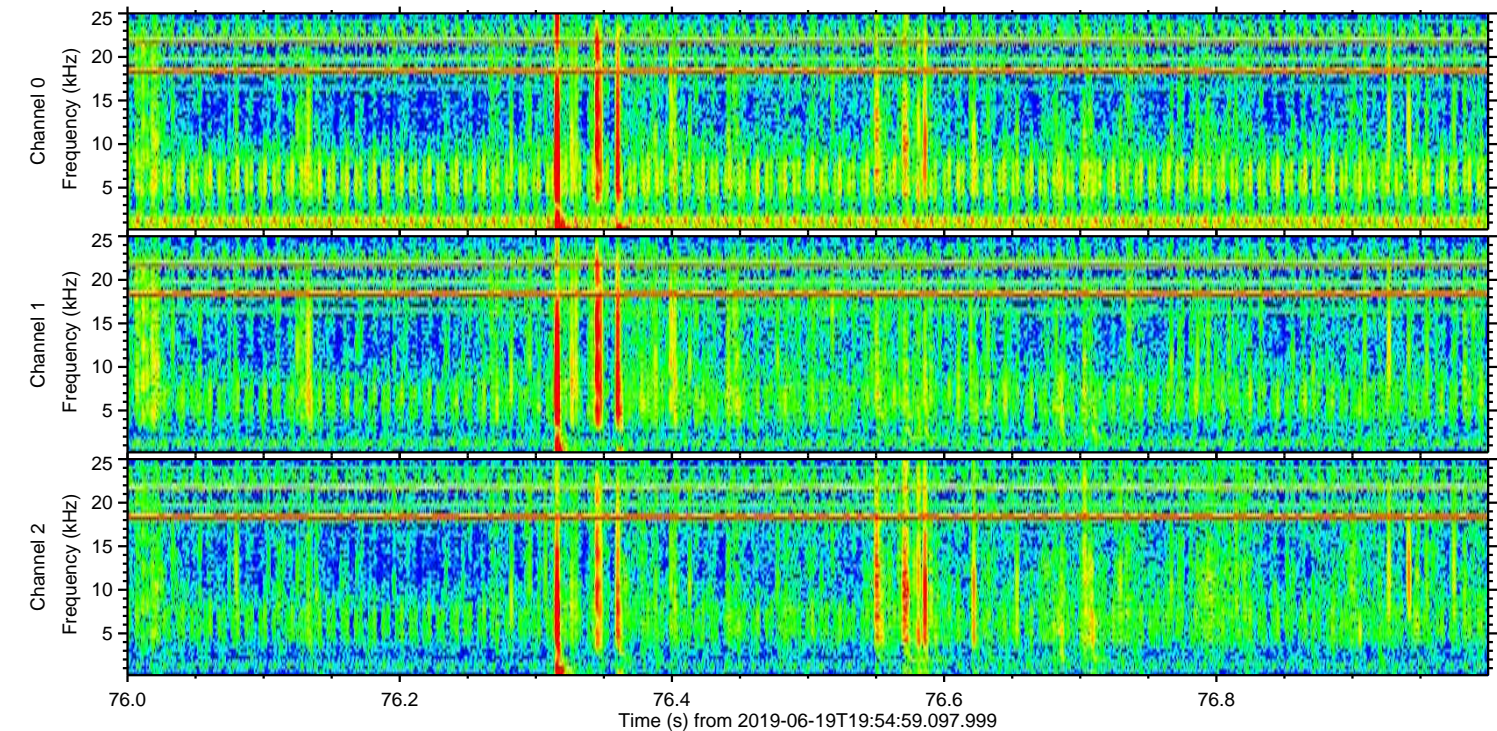
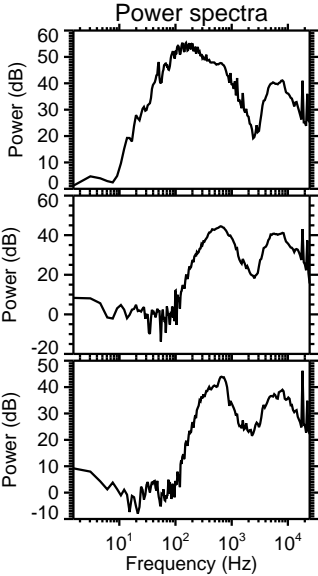
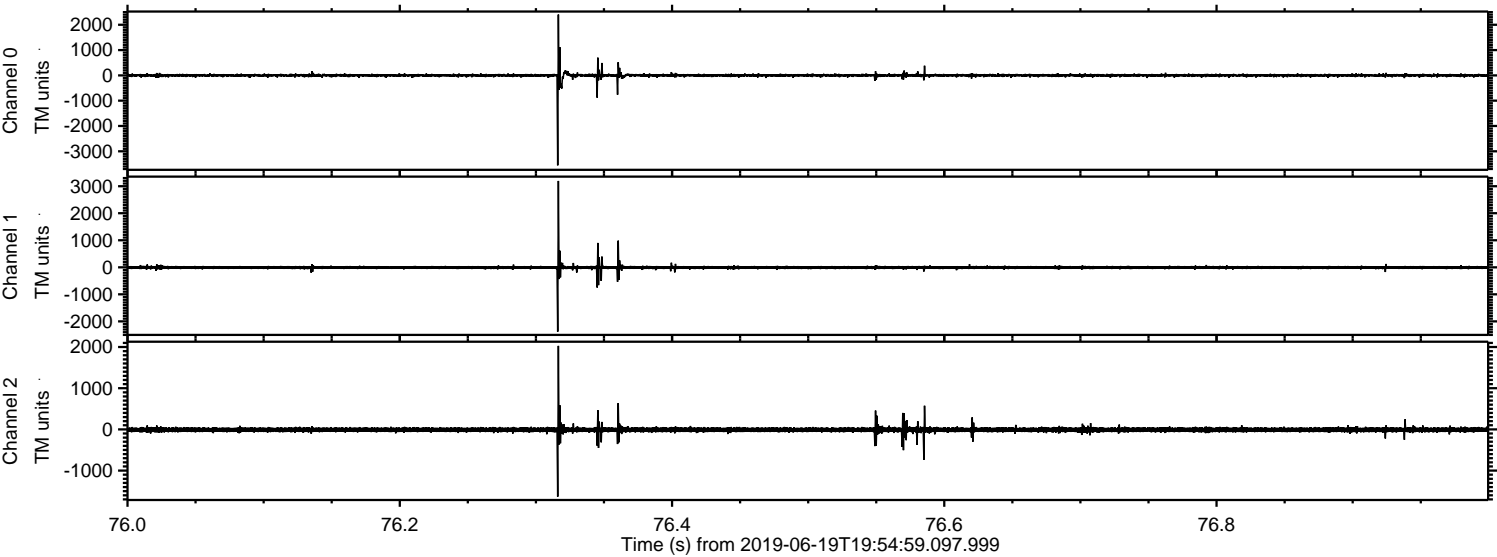
Processed Wed Jun 19 22:02:35 2019 by ELM ver.2012-10-06 from 001__elm20190619_195458__dat00.bin



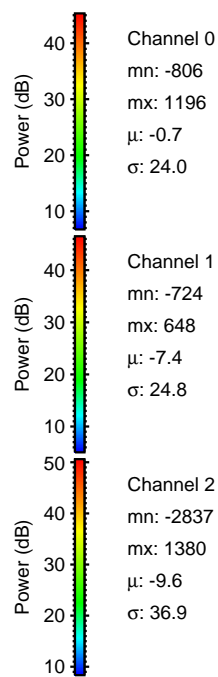
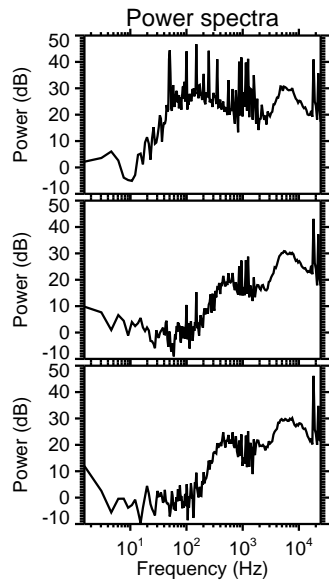
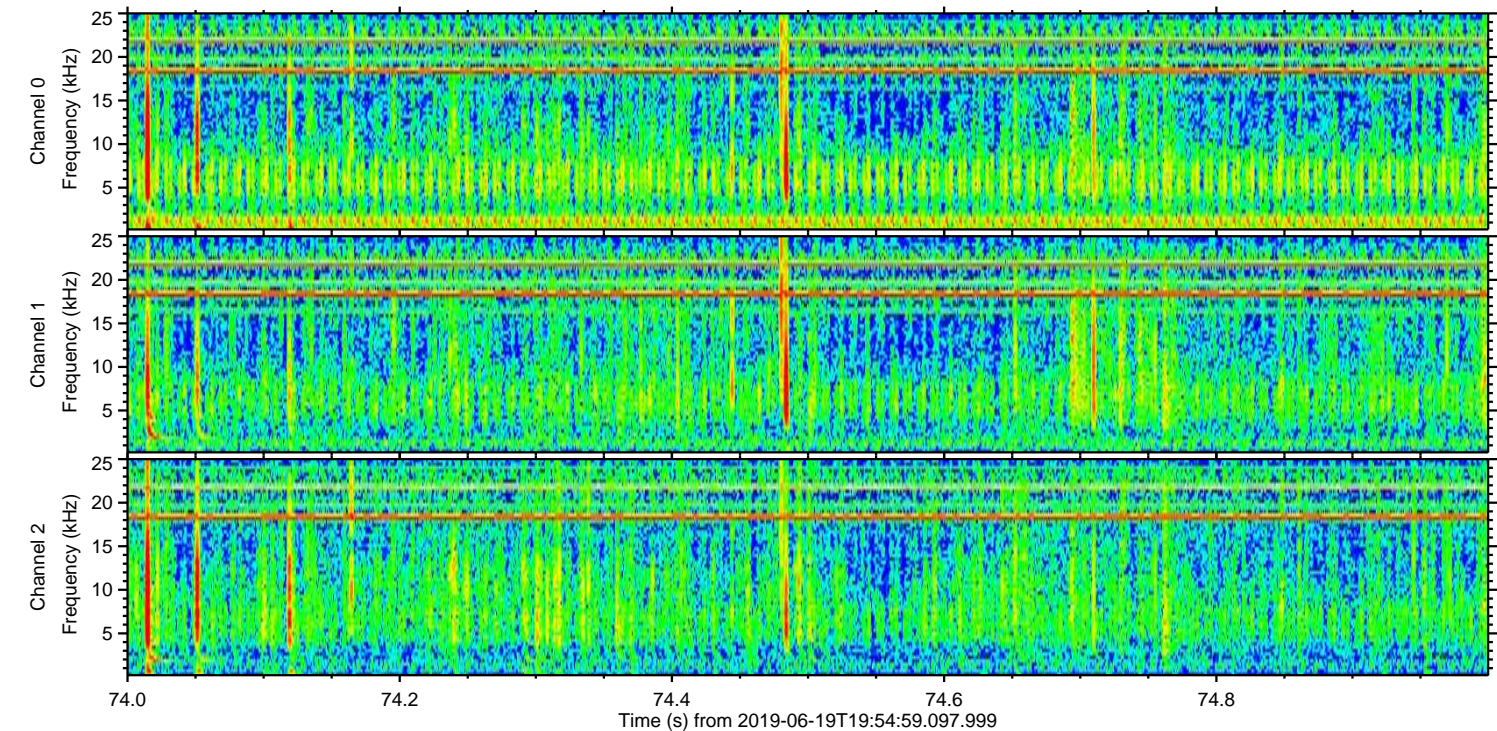
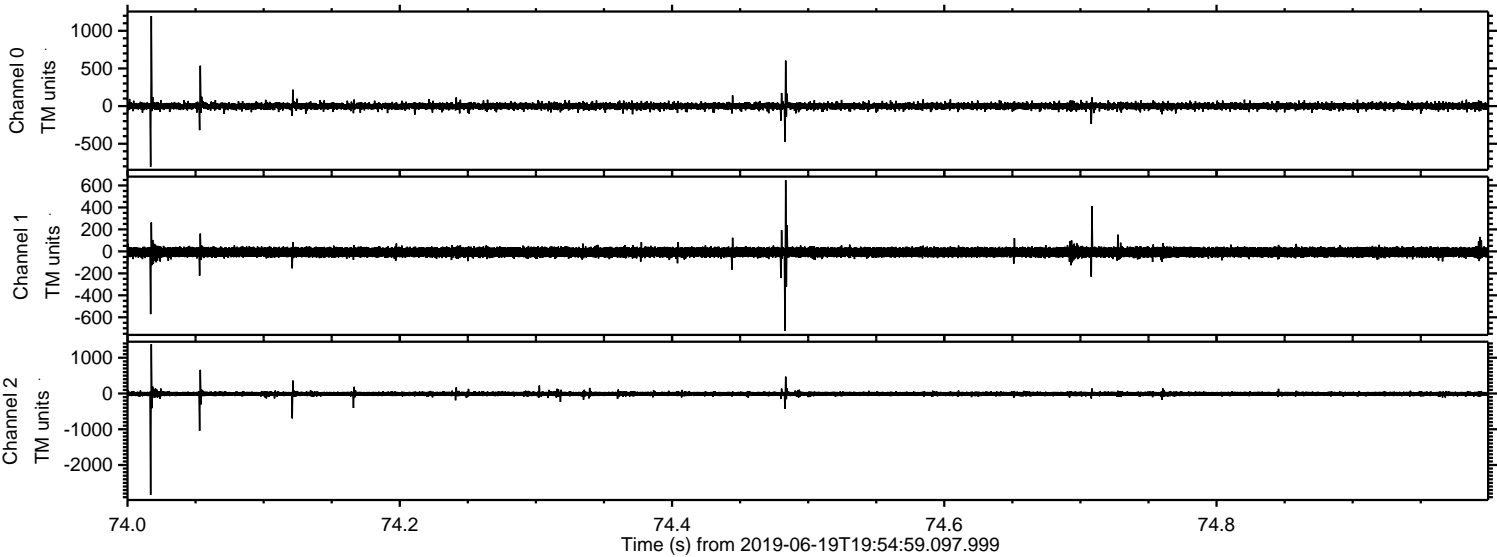
Processed Wed Jun 19 22:02:36 2019 by ELM ver.2012-10-06 from 001__elm20190619_195458__dat00.bin



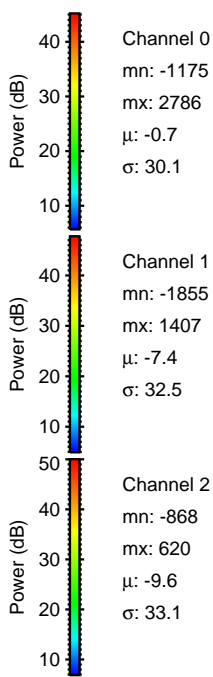
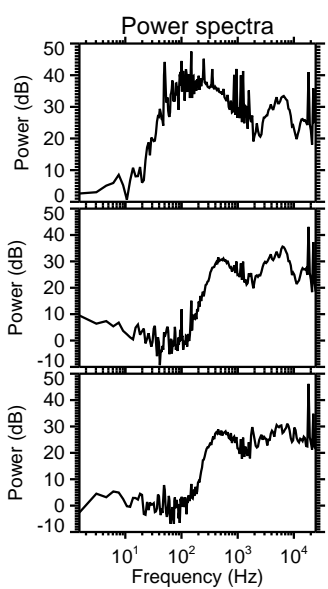
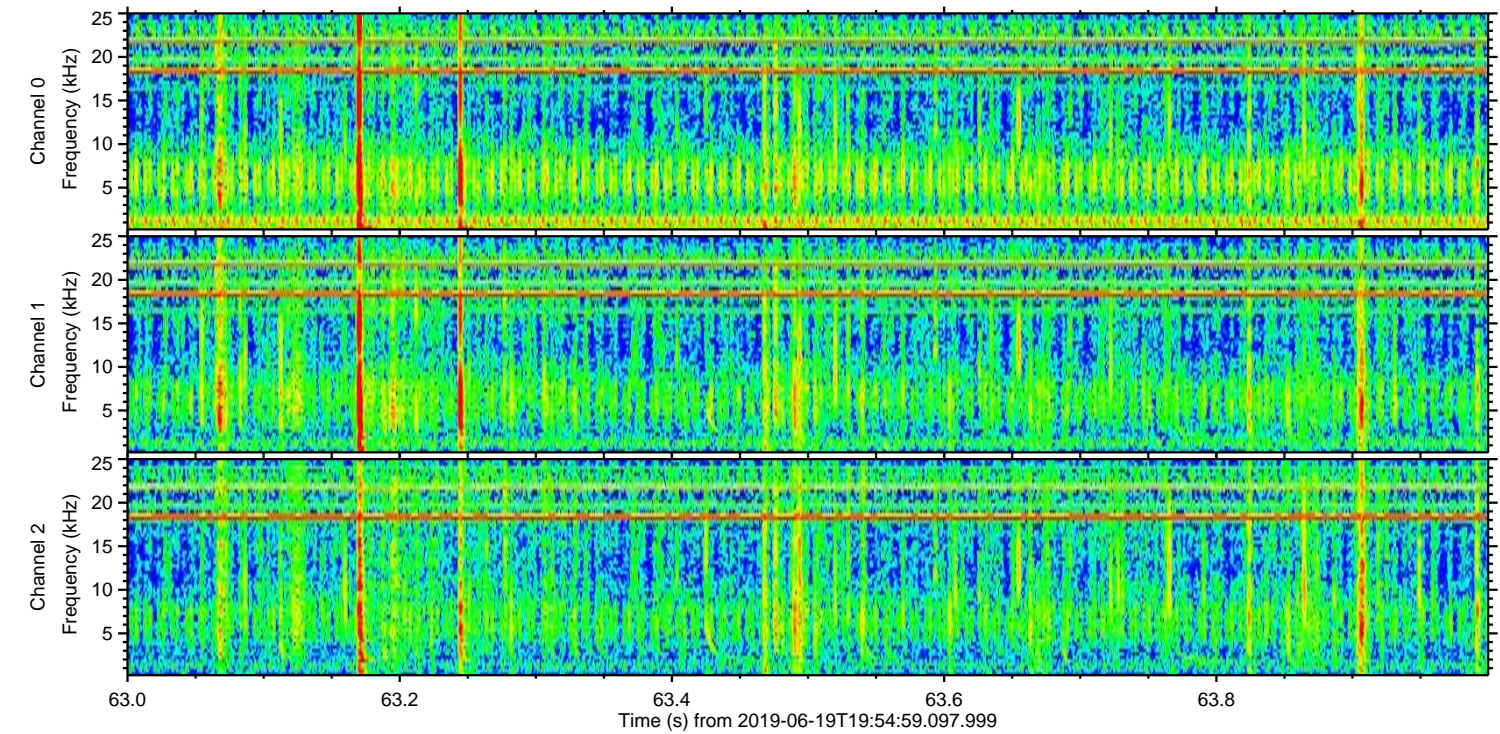
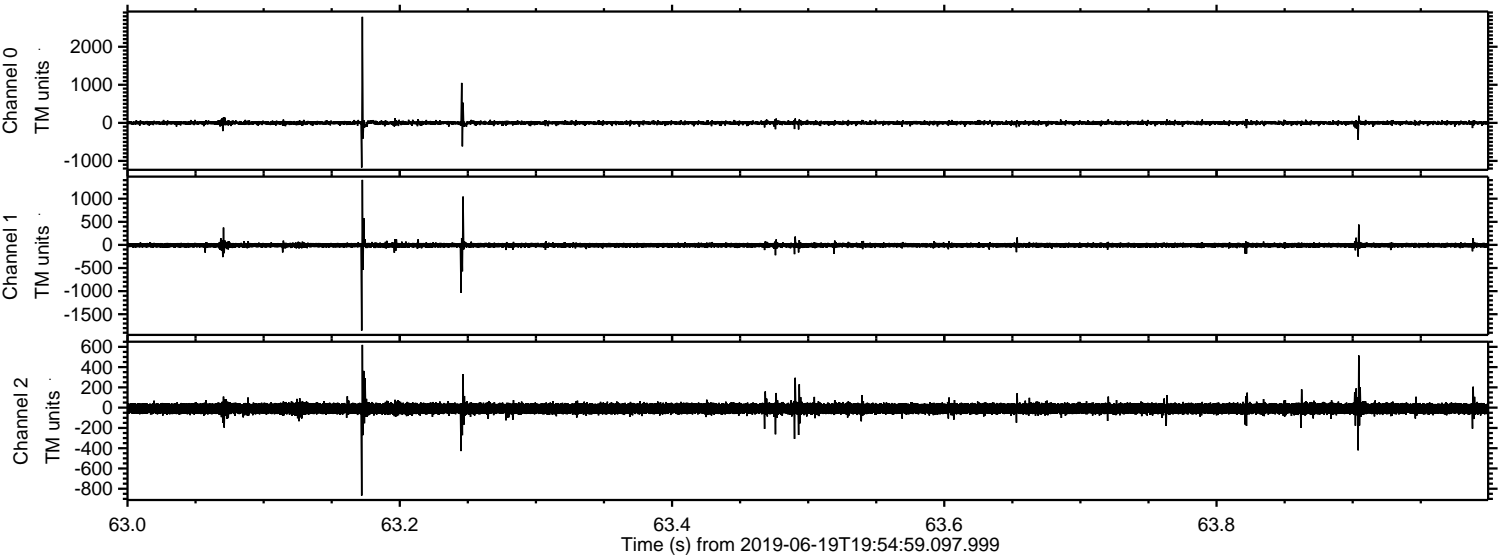
Processed Wed Jun 19 22:02:37 2019 by ELM ver.2012-10-06 from 001__elm20190619_195458__dat00.bin



Processed Wed Jun 19 22:02:38 2019 by ELM ver.2012-10-06 from 001__elm20190619_195458__dat00.bin



Processed Wed Jun 19 22:02:39 2019 by ELM ver.2012-10-06 from 001__elm20190619_195458__dat00.bin



Channel 0
mn: -1175
mx: 2786
 μ : -0.7
 σ : 30.1

Channel 1
mn: -1855
mx: 1407
 μ : -7.4
 σ : 32.5

Channel 2
mn: -868
mx: 620
 μ : -9.6
 σ : 33.1

Processed Wed Jun 19 22:02:39 2019 by ELM ver.2012-10-06 from 001__elm20190619_195458__dat00.bin

