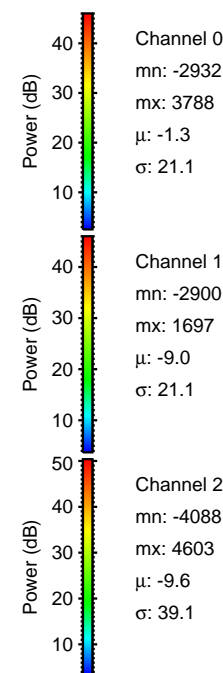
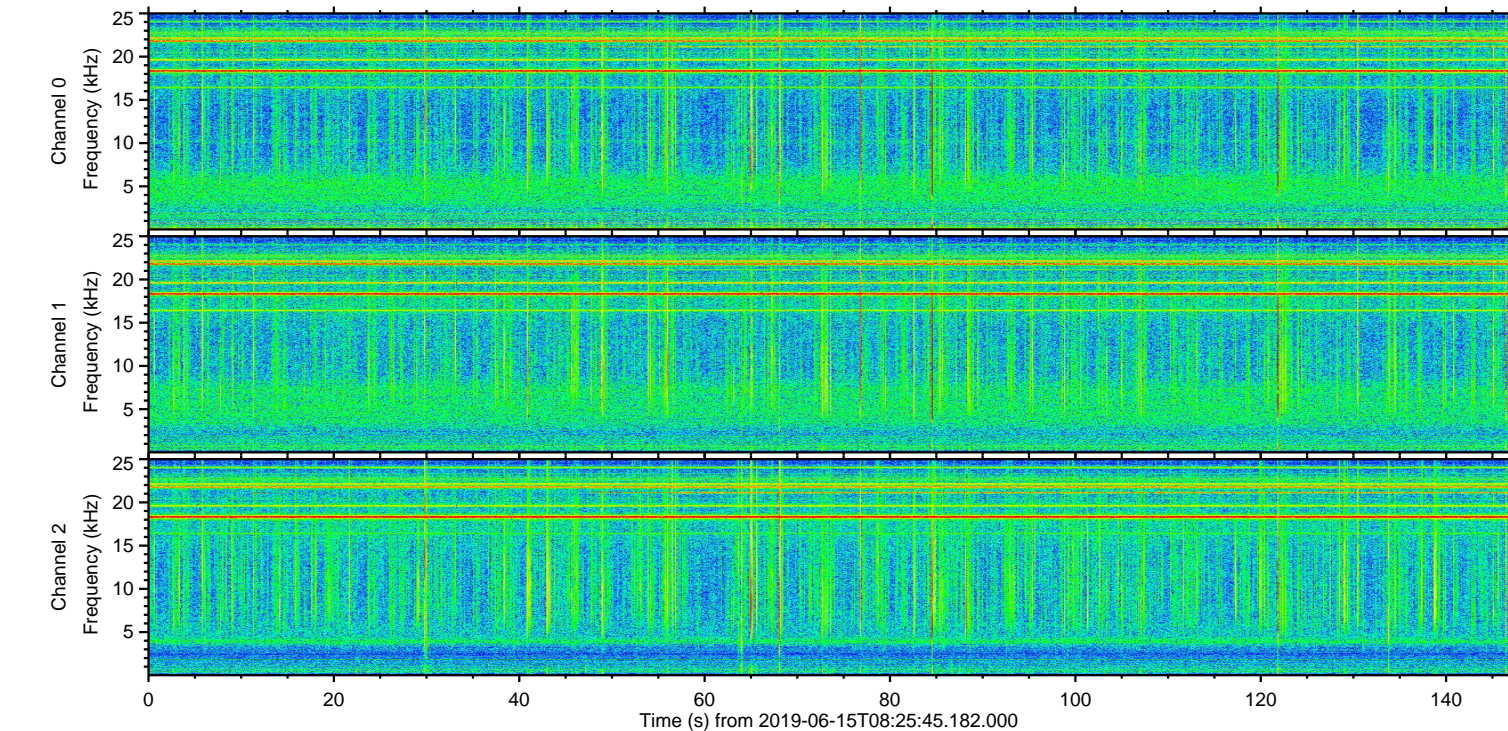
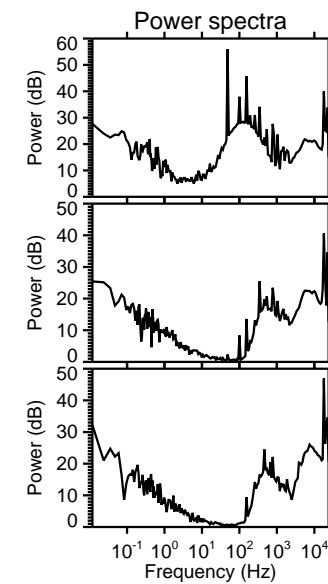
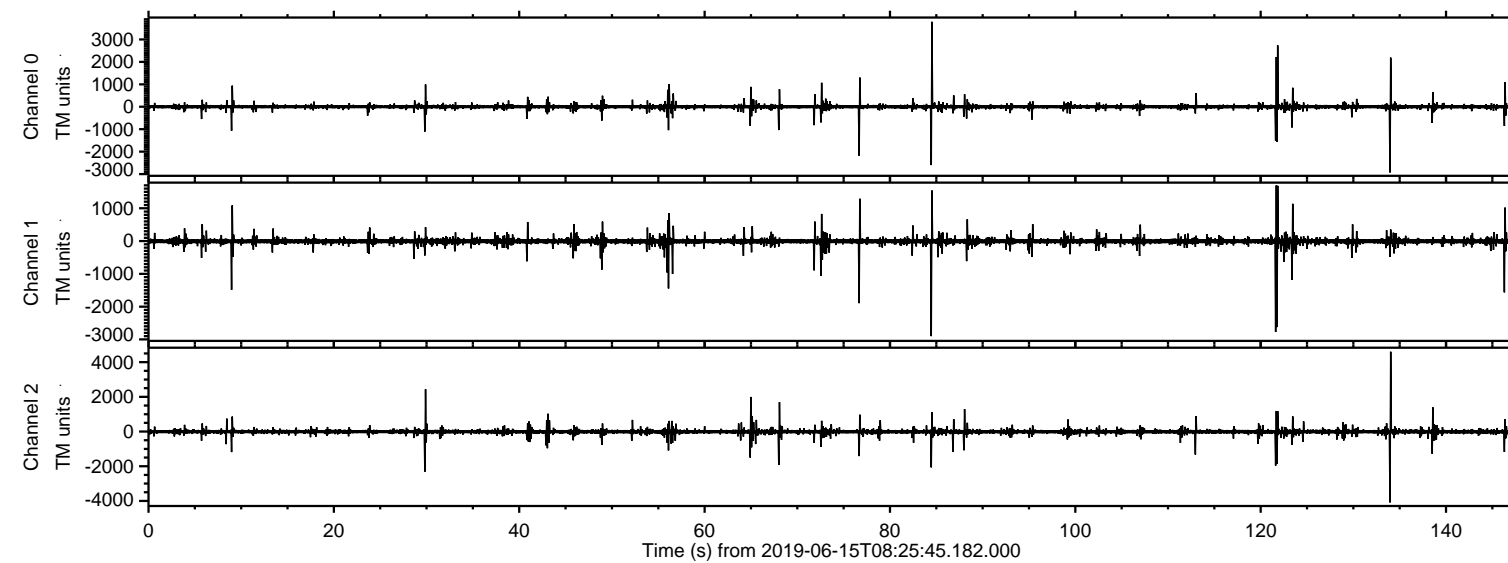


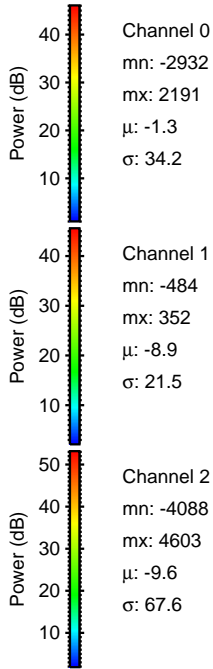
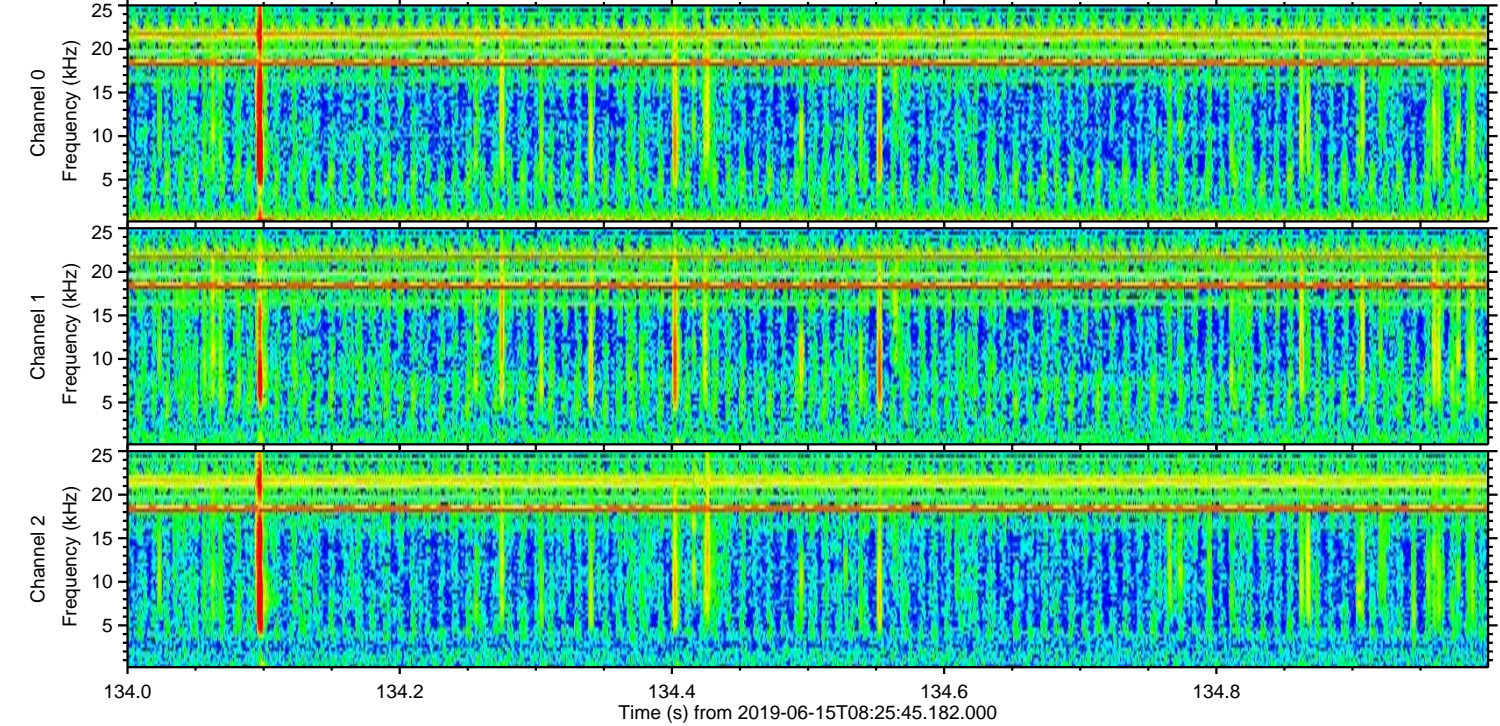
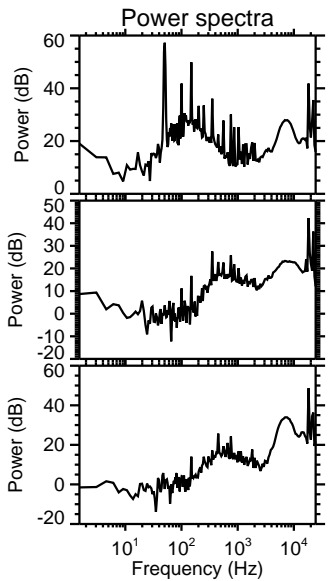
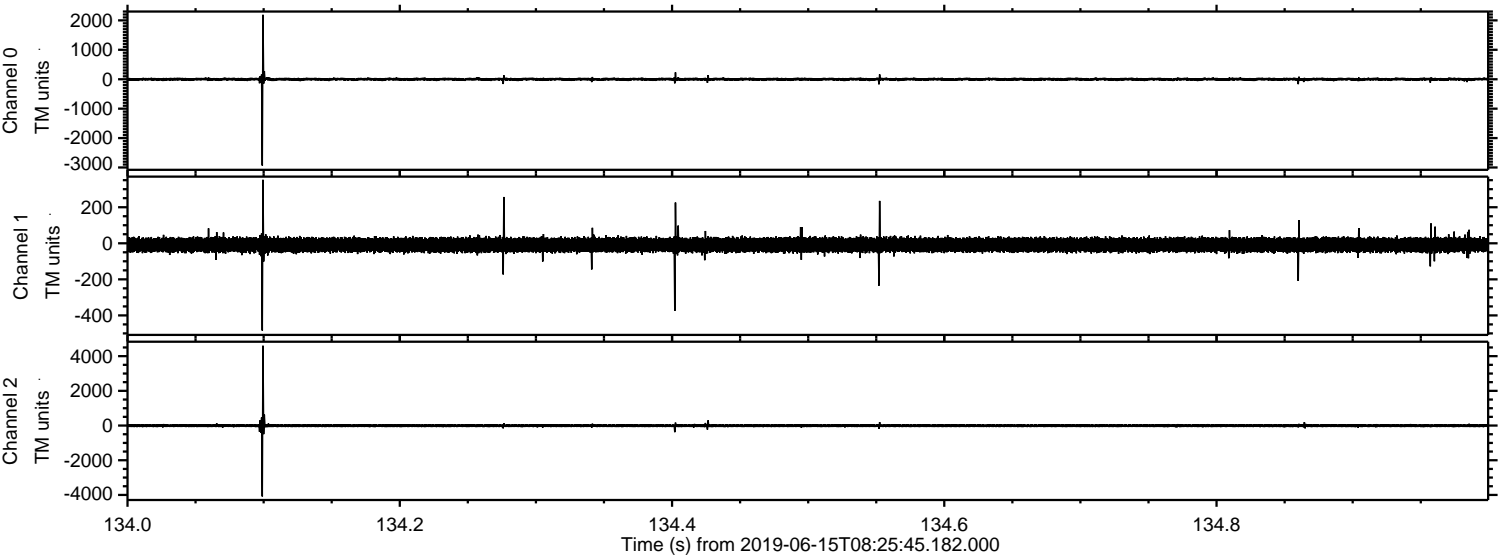
ELMAVAN 3D WAVEFORMS (Measured data sampled at 50 kHz) 51000 packets of 144 samples from 2019-06-15T08:25:45.182.000.

Processed Sat Jun 15 10:34:03 2019 by ELM ver.2012-10-06 from 001__elm20190615_082544__dat00.bin

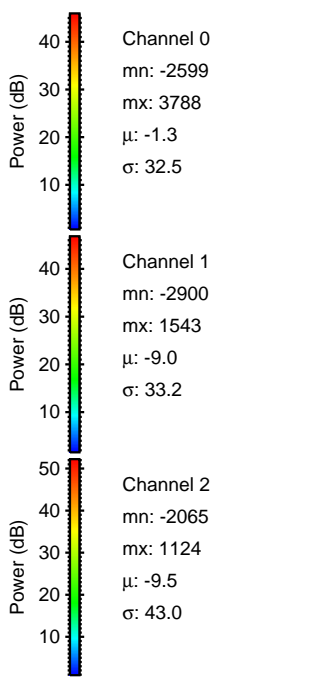
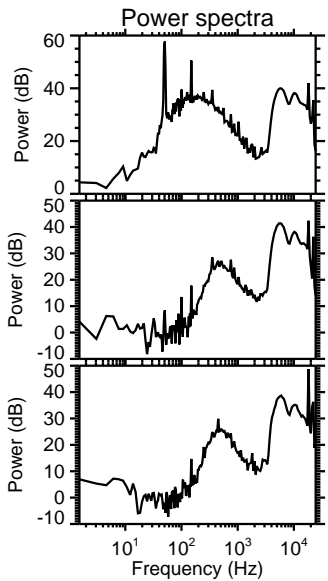
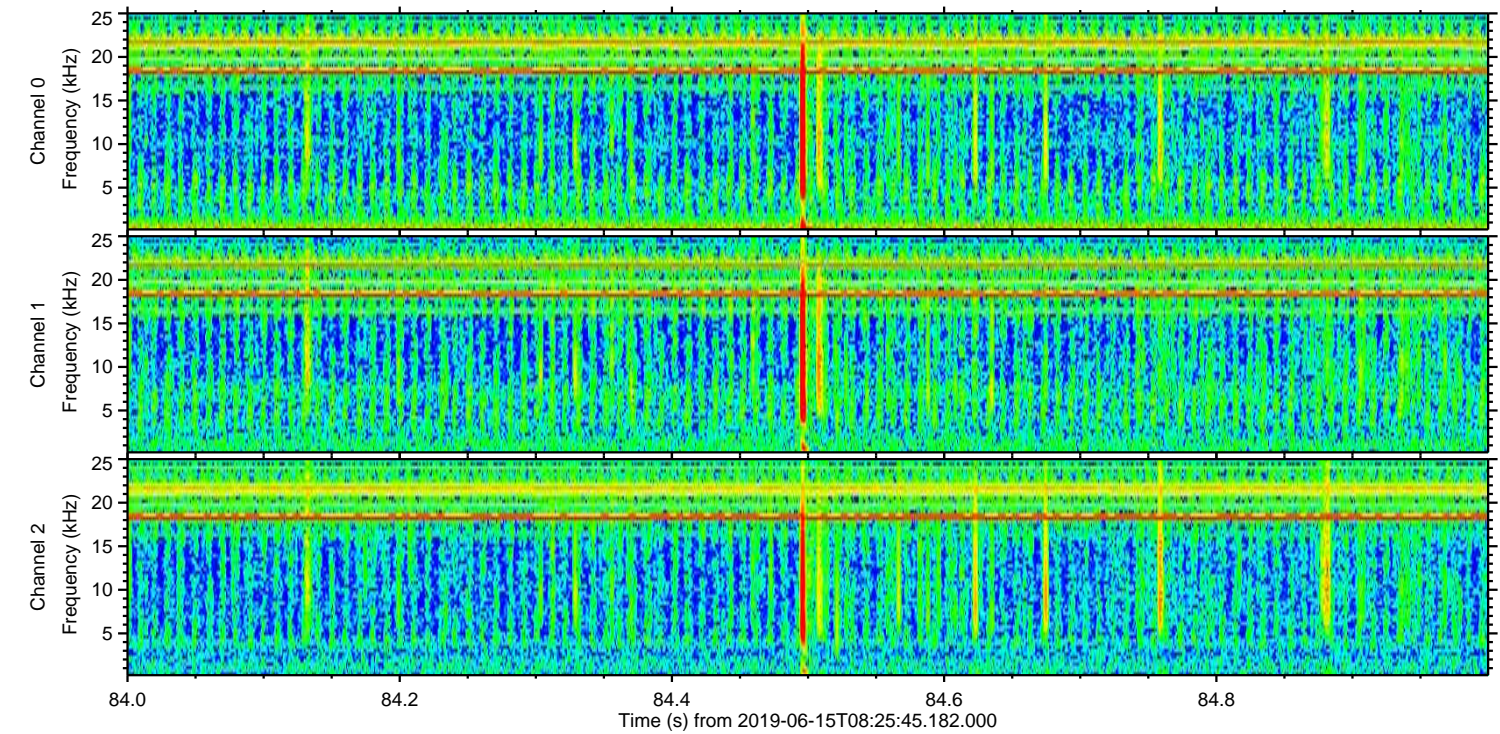
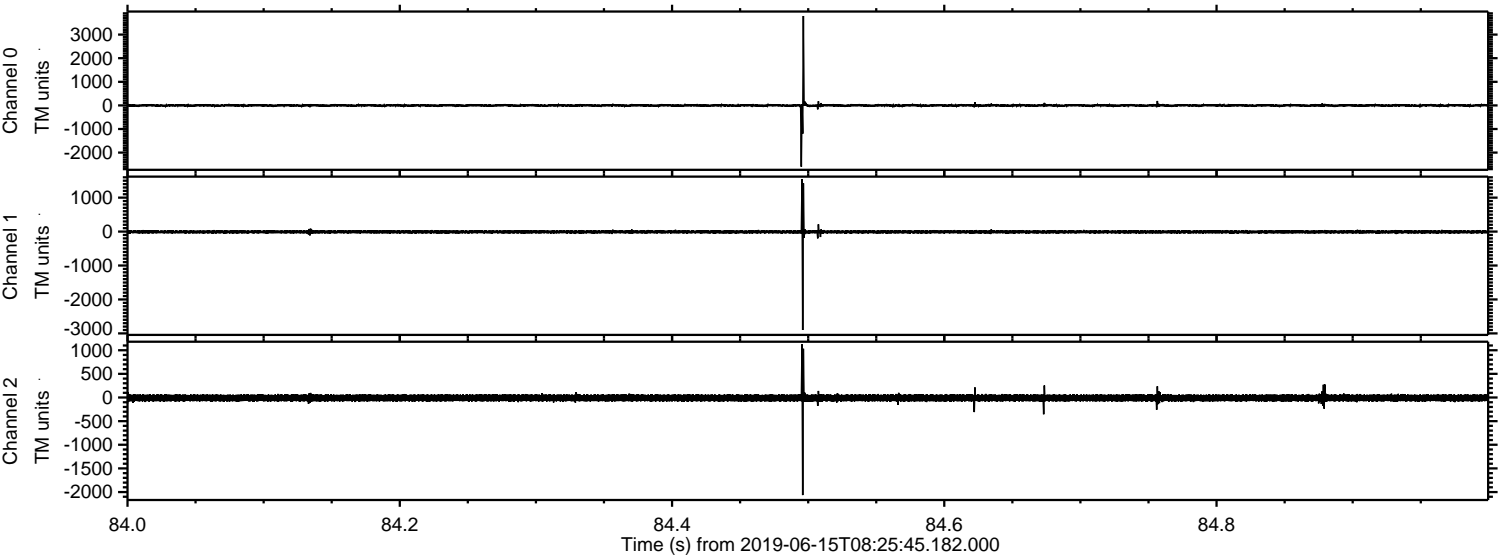


ELMAVAN 3D WAVEFORMS (Measured data sampled at 50 kHz) 51000 packets of 144 samples from 2019-06-15T08:25:45.182.000. Part 135/147

Processed Sat Jun 15 10:34:09 2019 by ELM ver.2012-10-06 from 001__elm20190615_082544__dat00.bin

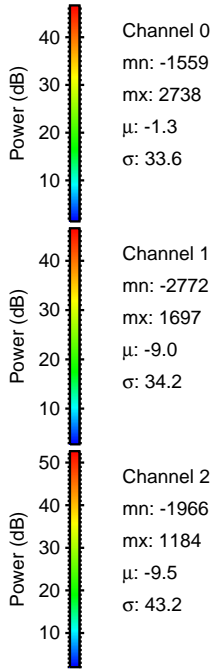
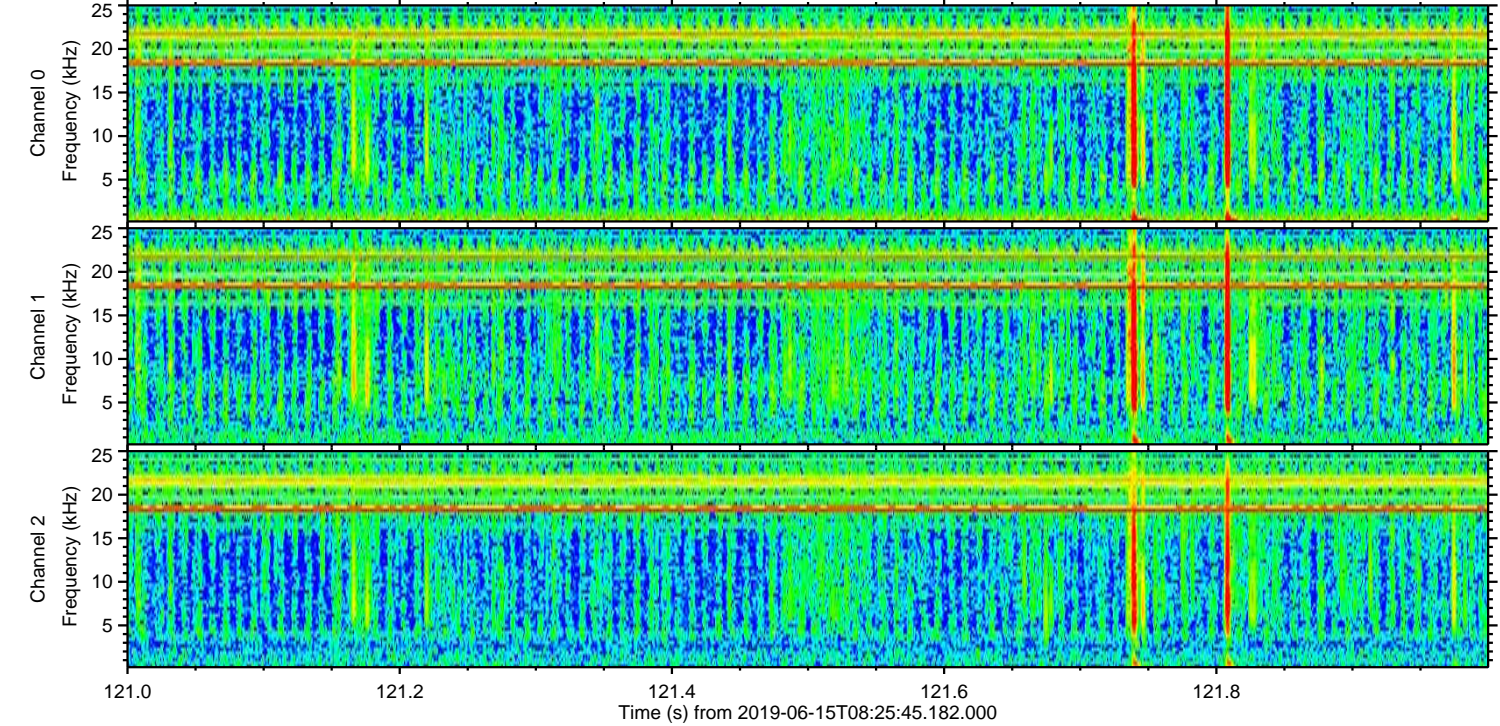
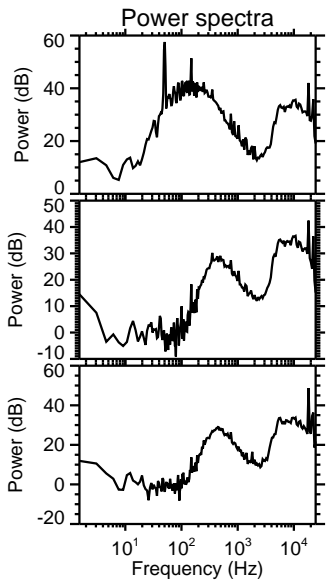
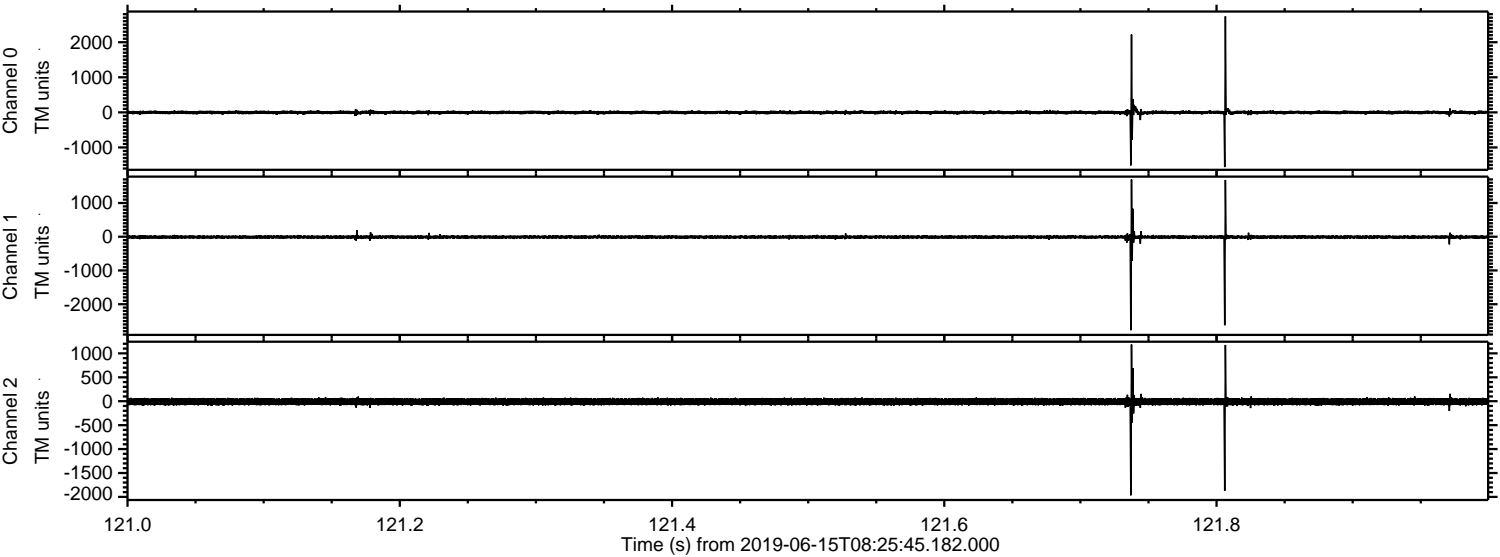


Processed Sat Jun 15 10:34:10 2019 by ELM ver.2012-10-06 from 001__elm20190615_082544__dat00.bin

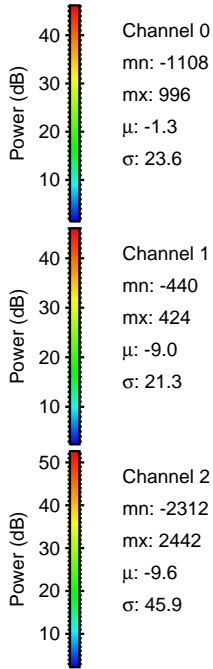
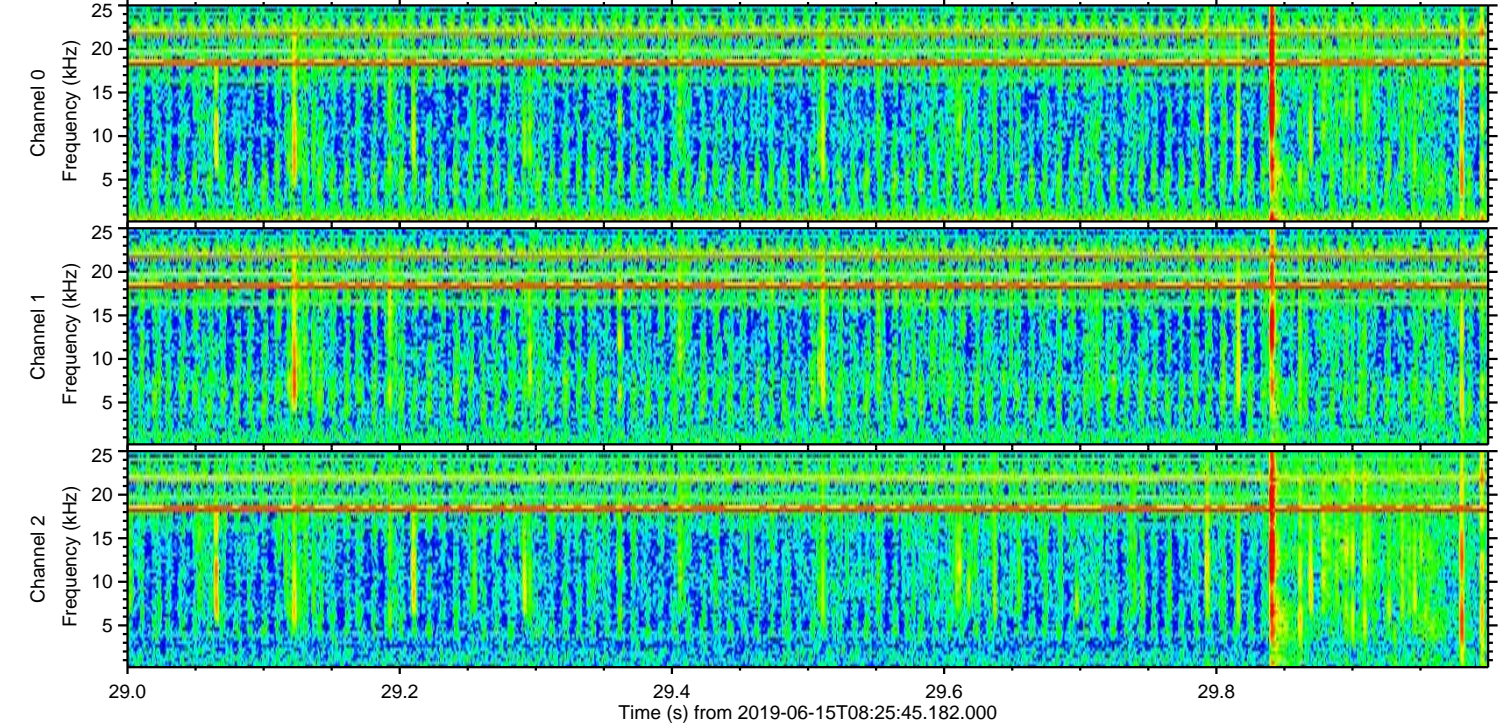
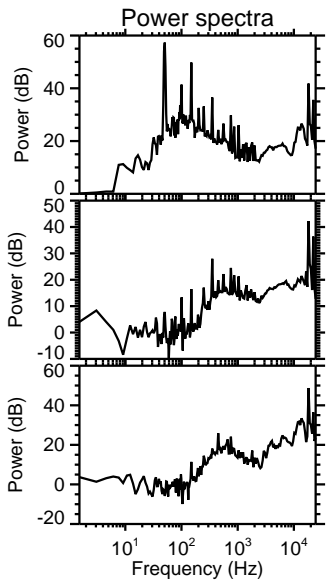
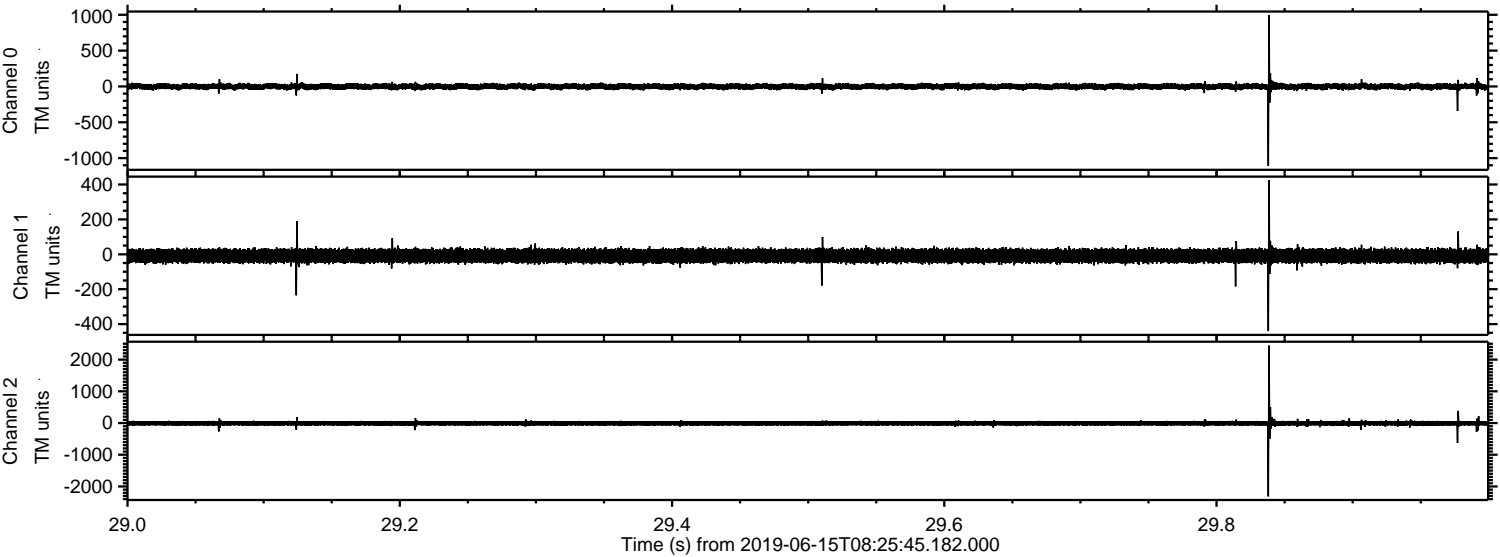


ELMAVAN 3D WAVEFORMS (Measured data sampled at 50 kHz) 51000 packets of 144 samples from 2019-06-15T08:25:45.182.000. Part 122/147

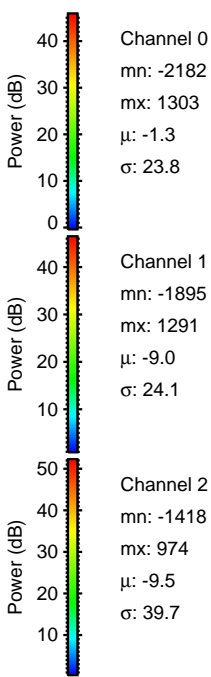
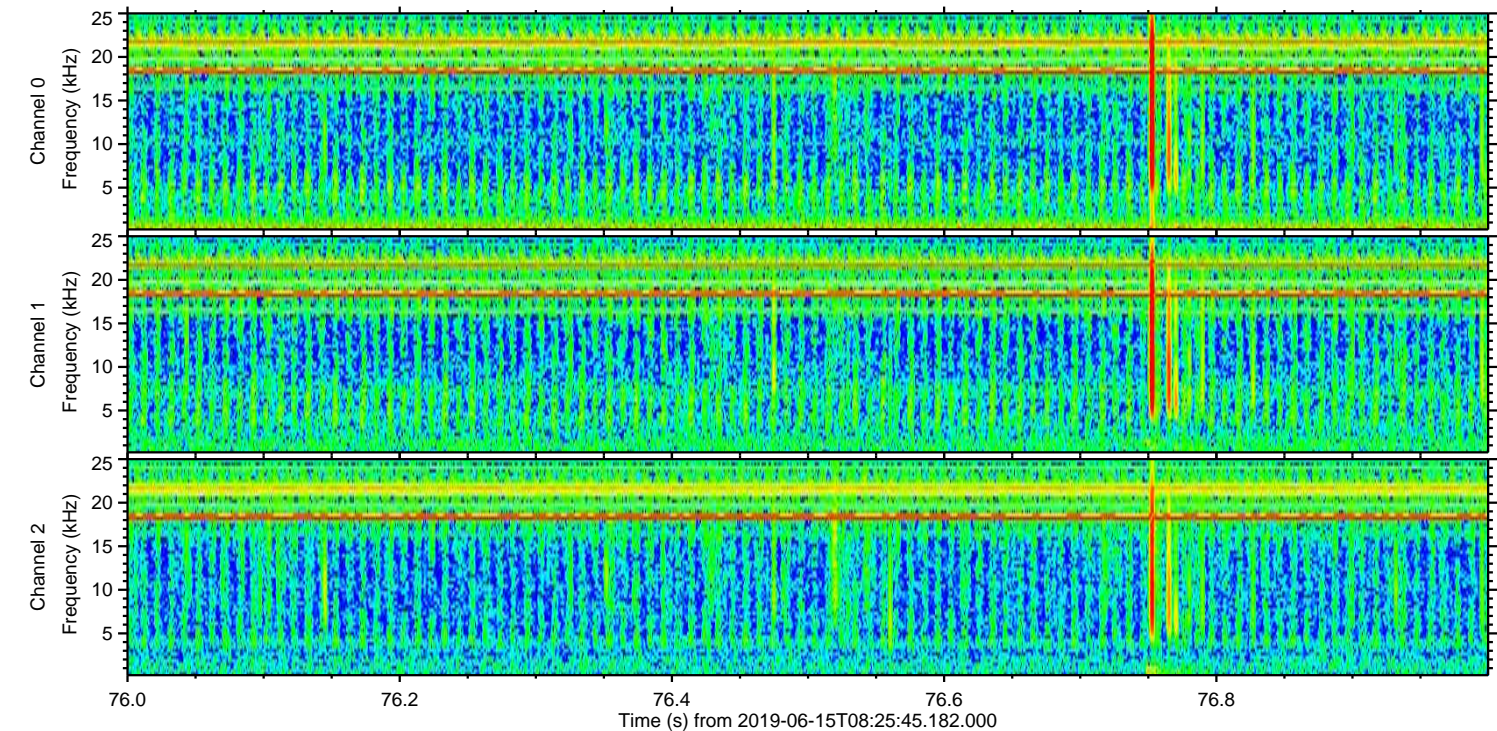
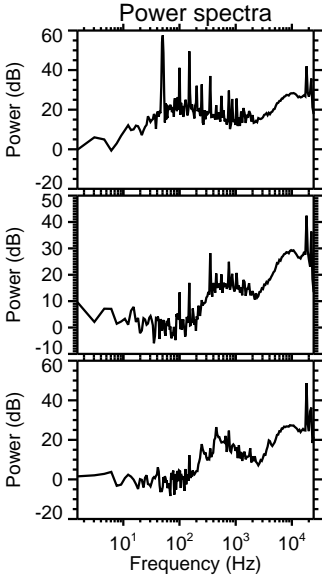
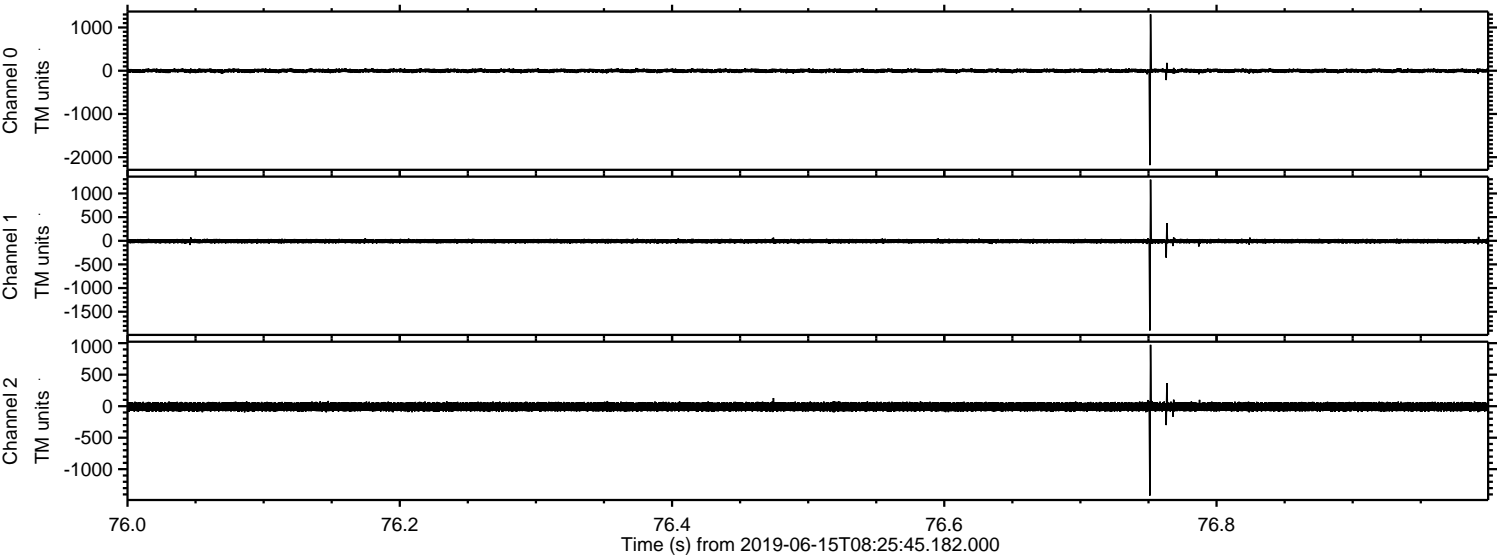
Processed Sat Jun 15 10:34:11 2019 by ELM ver.2012-10-06 from 001__elm20190615_082544__dat00.bin



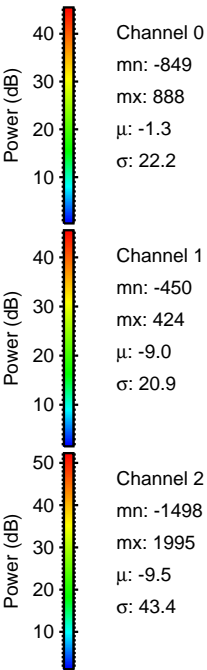
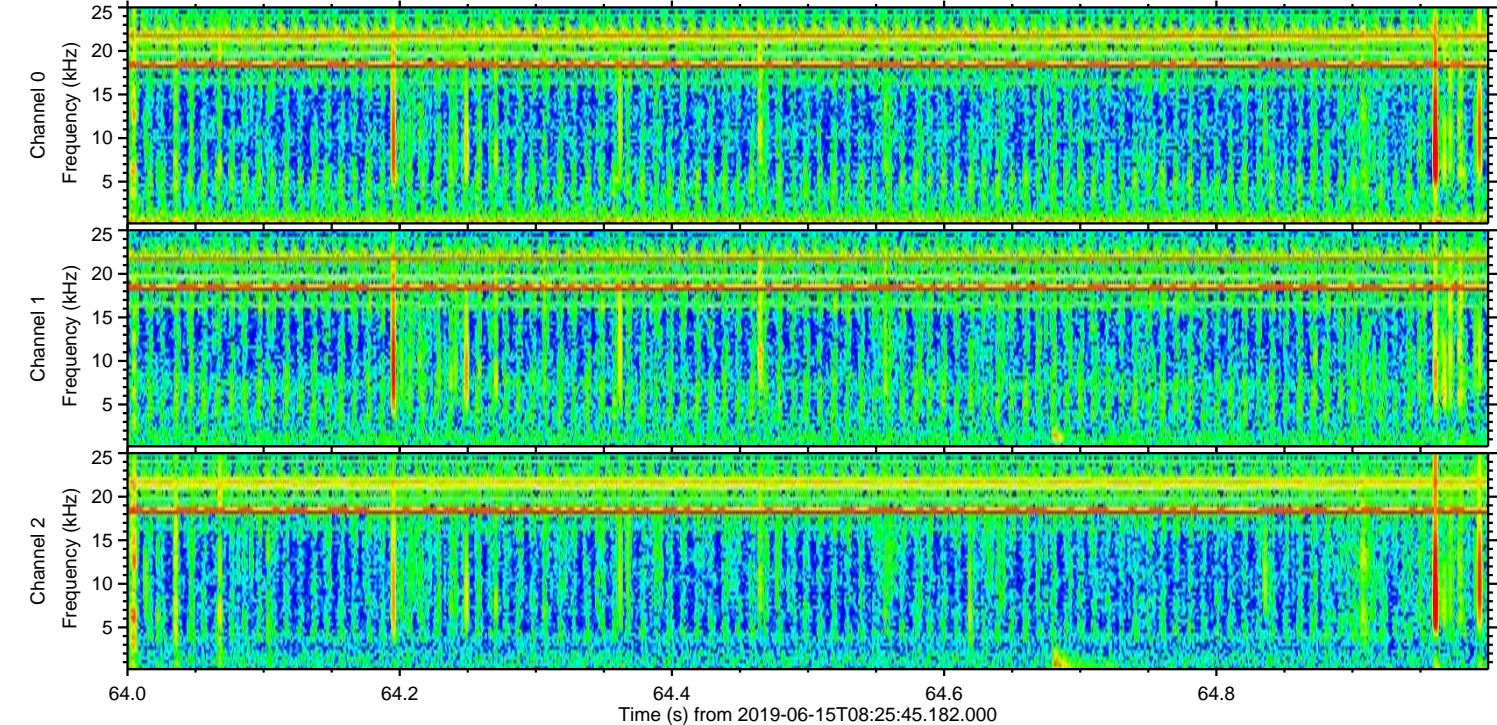
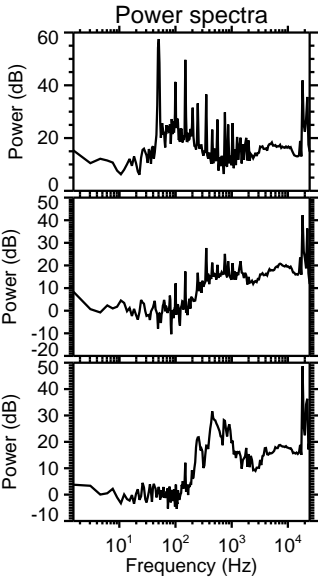
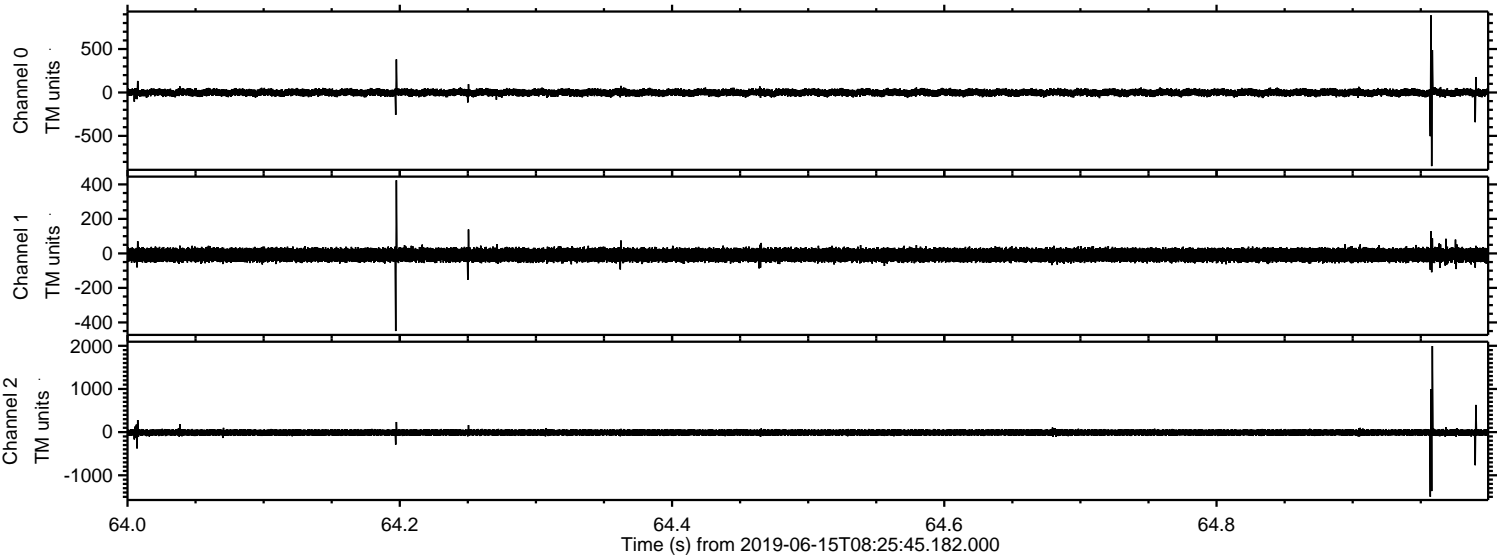
Processed Sat Jun 15 10:34:11 2019 by ELM ver.2012-10-06 from 001__elm20190615_082544__dat00.bin



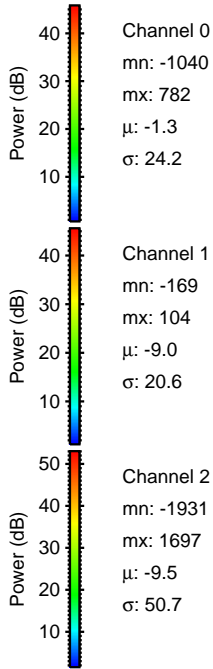
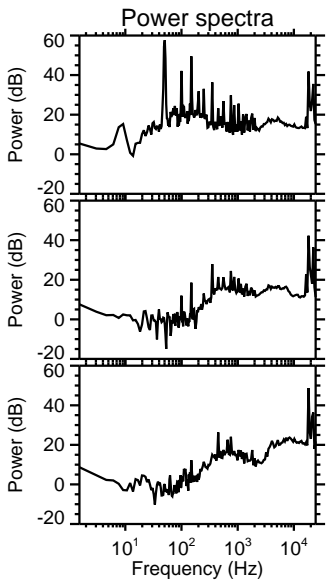
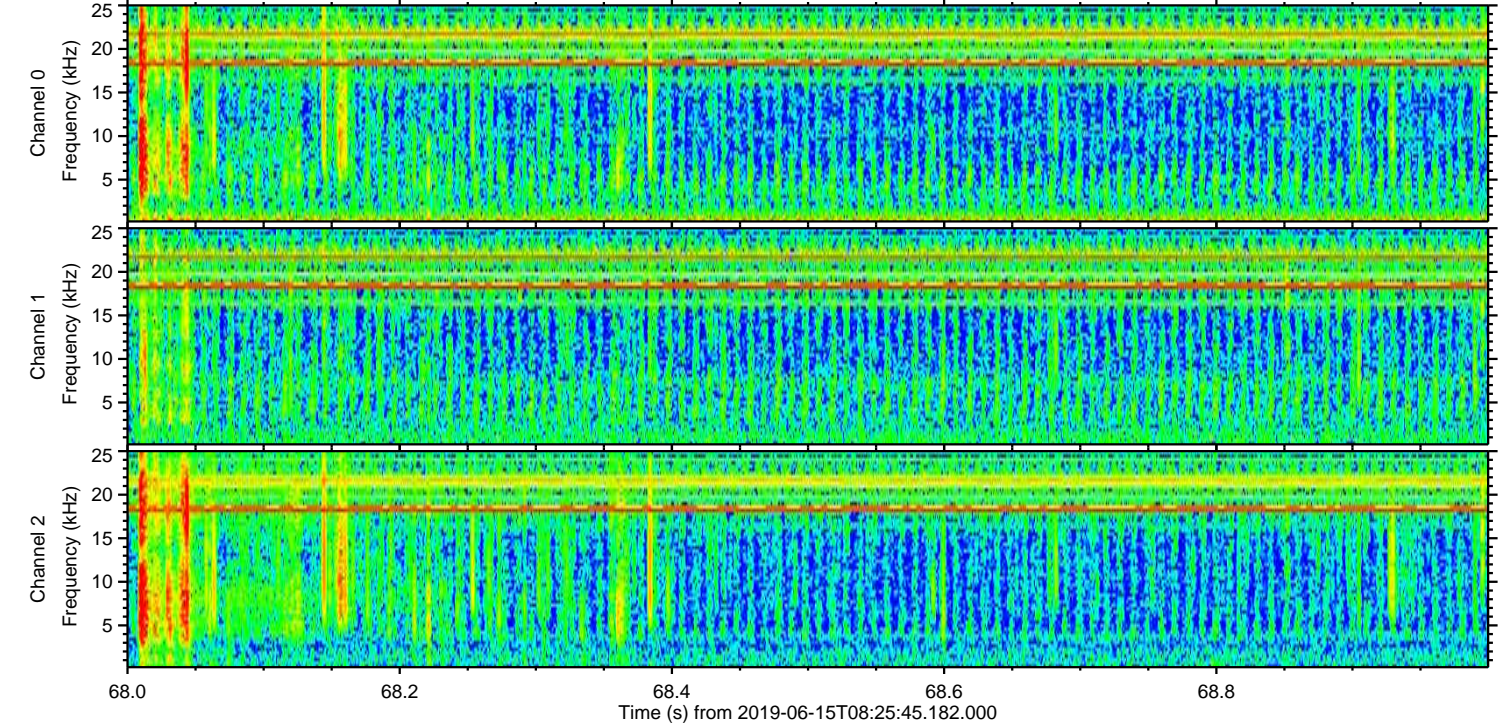
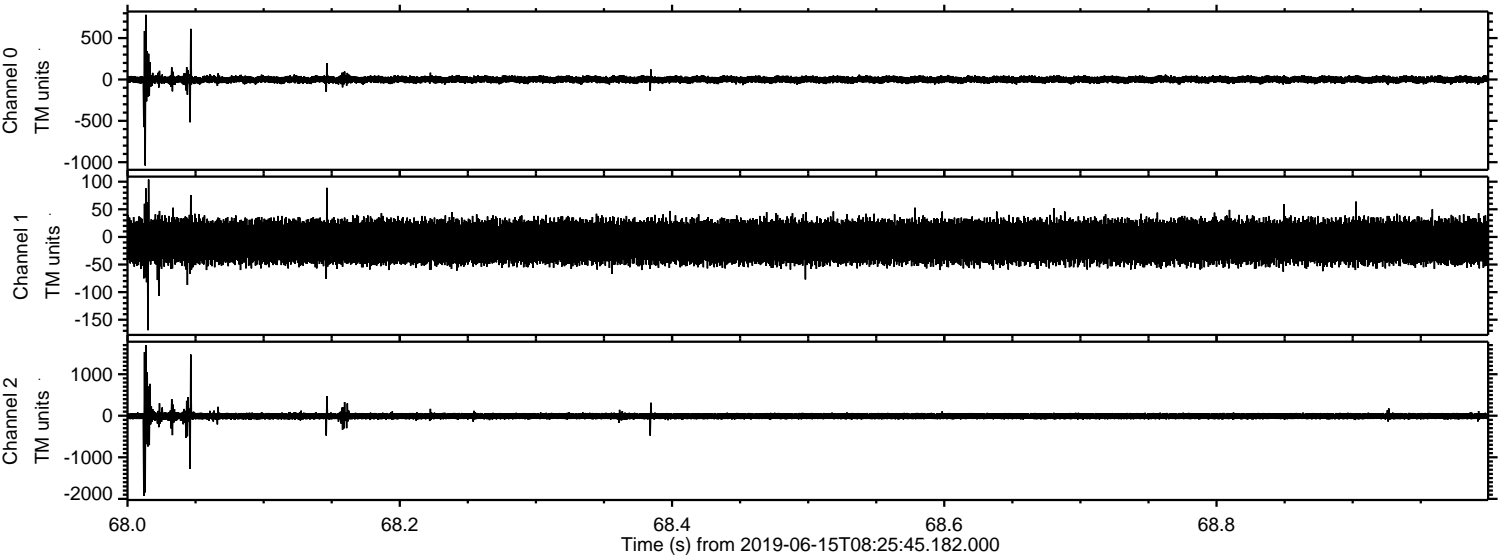
Processed Sat Jun 15 10:34:12 2019 by ELM ver.2012-10-06 from 001__elm20190615_082544__dat00.bin



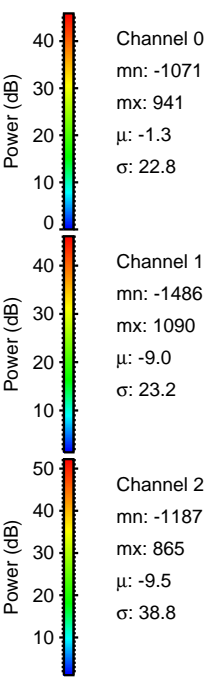
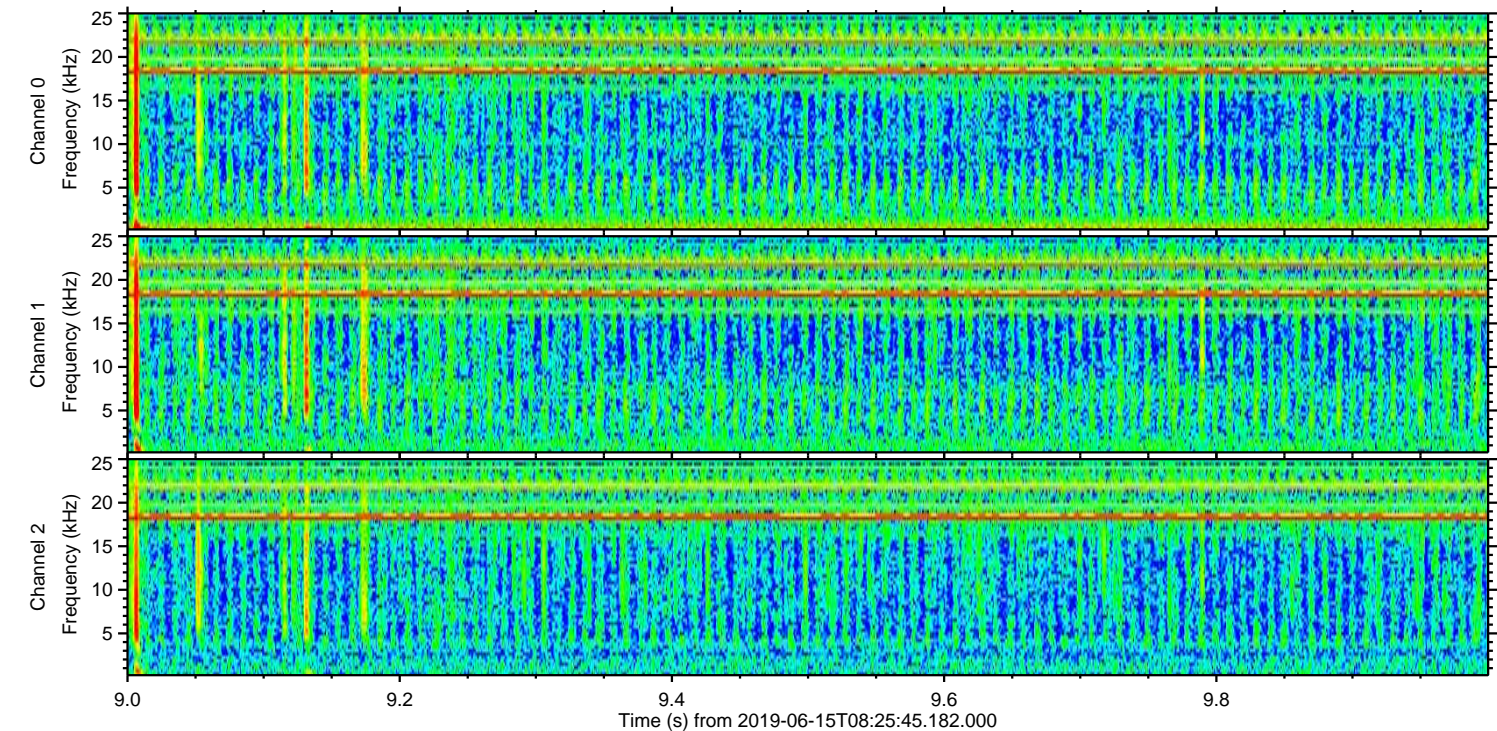
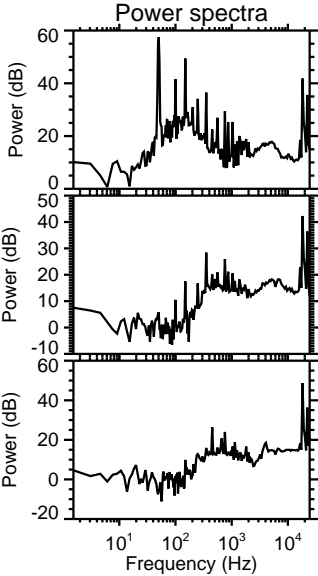
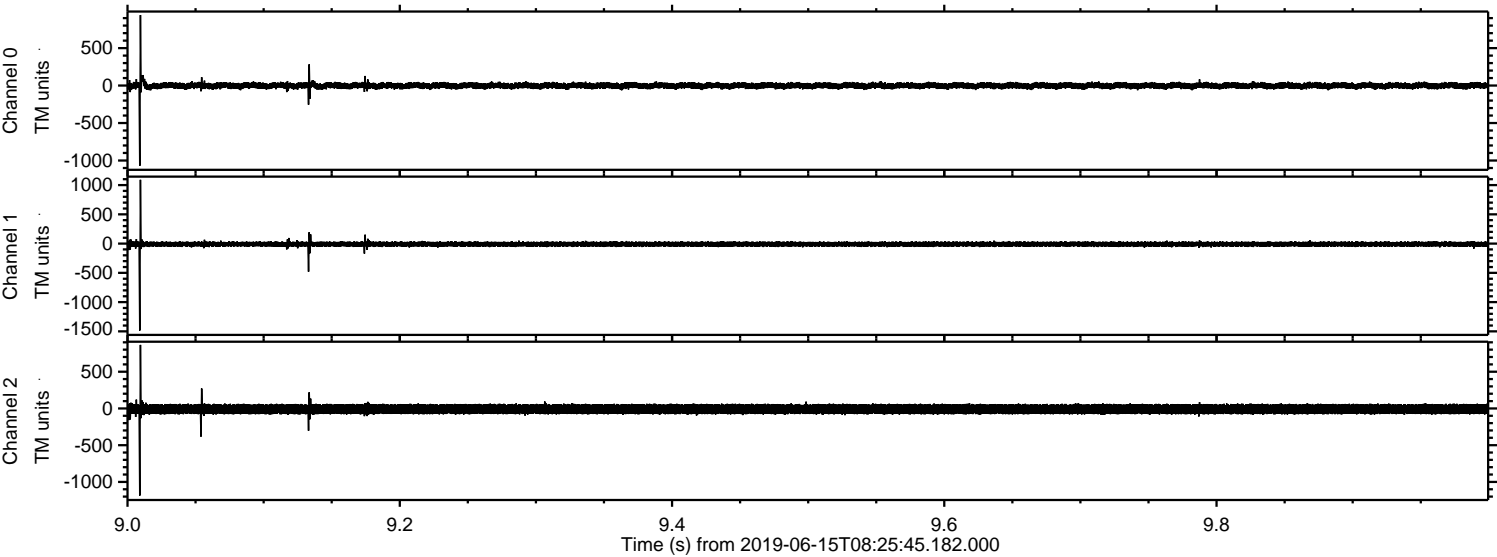
Processed Sat Jun 15 10:34:12 2019 by ELM ver.2012-10-06 from 001__elm20190615_082544__dat00.bin



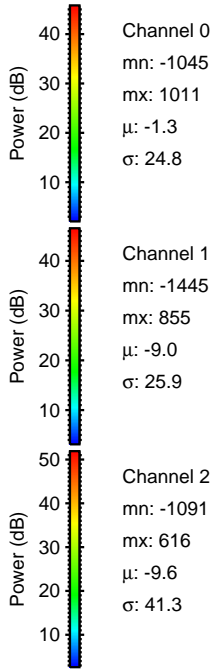
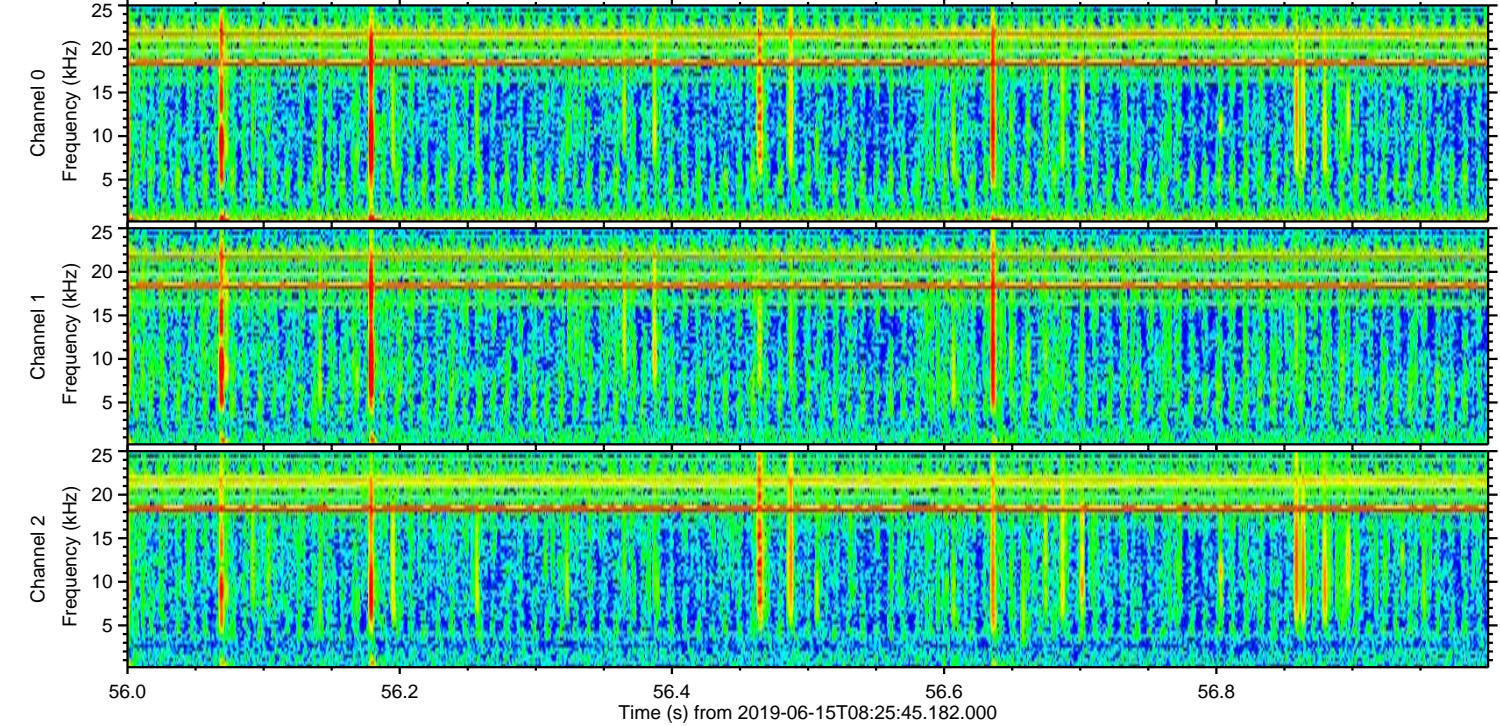
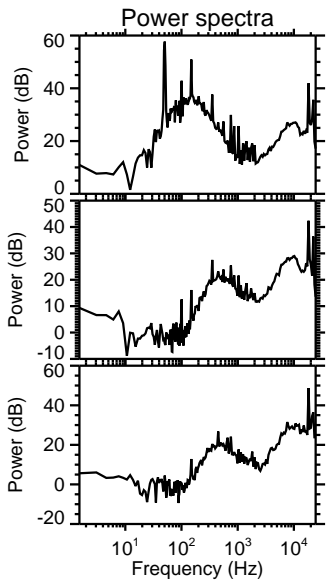
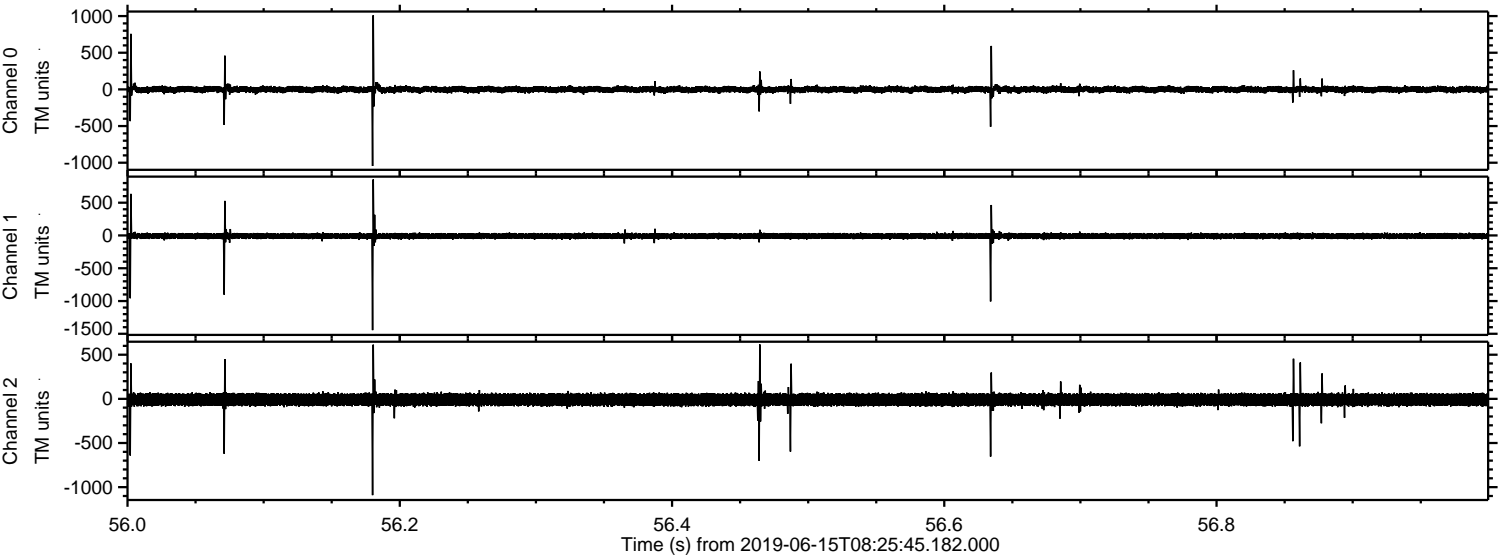
Processed Sat Jun 15 10:34:13 2019 by ELM ver.2012-10-06 from 001__elm20190615_082544__dat00.bin



Processed Sat Jun 15 10:34:14 2019 by ELM ver.2012-10-06 from 001__elm20190615_082544__dat00.bin



Processed Sat Jun 15 10:34:14 2019 by ELM ver.2012-10-06 from 001__elm20190615_082544__dat00.bin



Channel 0
mn: -1045
mx: 1011
 μ : -1.3
 σ : 24.8

Channel 1
mn: -1445
mx: 855
 μ : -9.0
 σ : 25.9

Channel 2
mn: -1091
mx: 616
 μ : -9.6
 σ : 41.3

