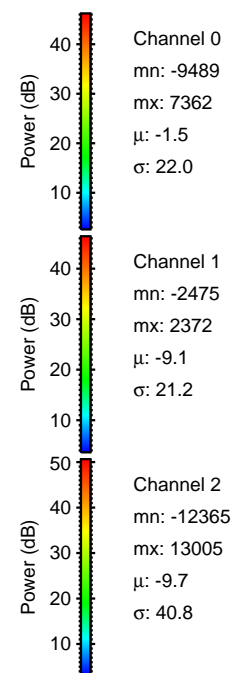
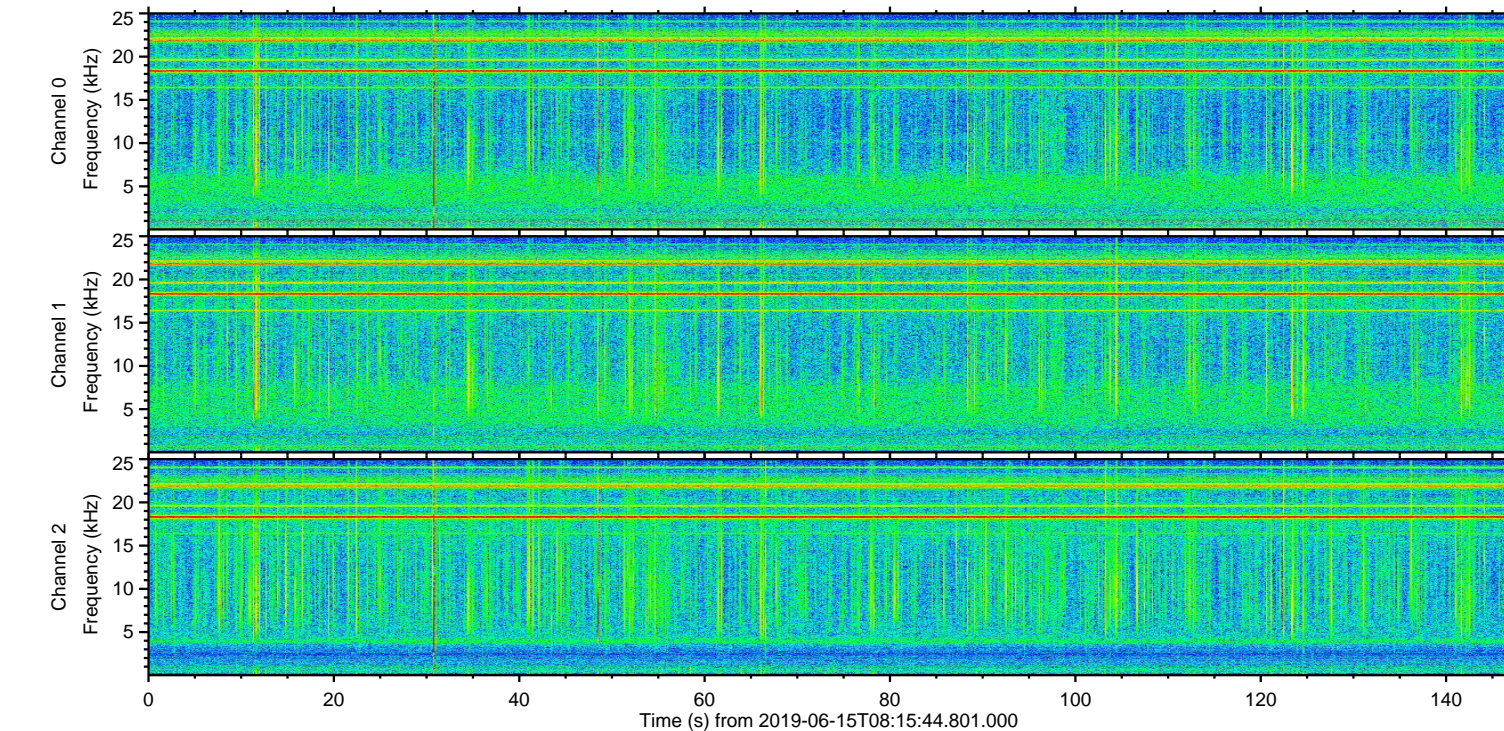
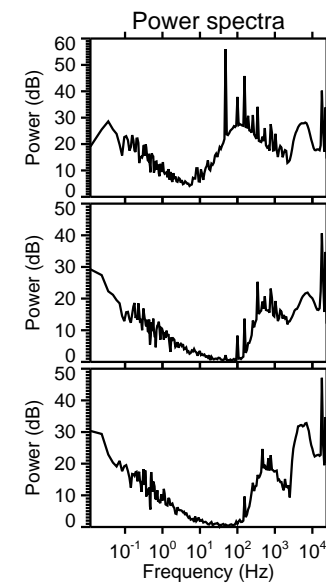
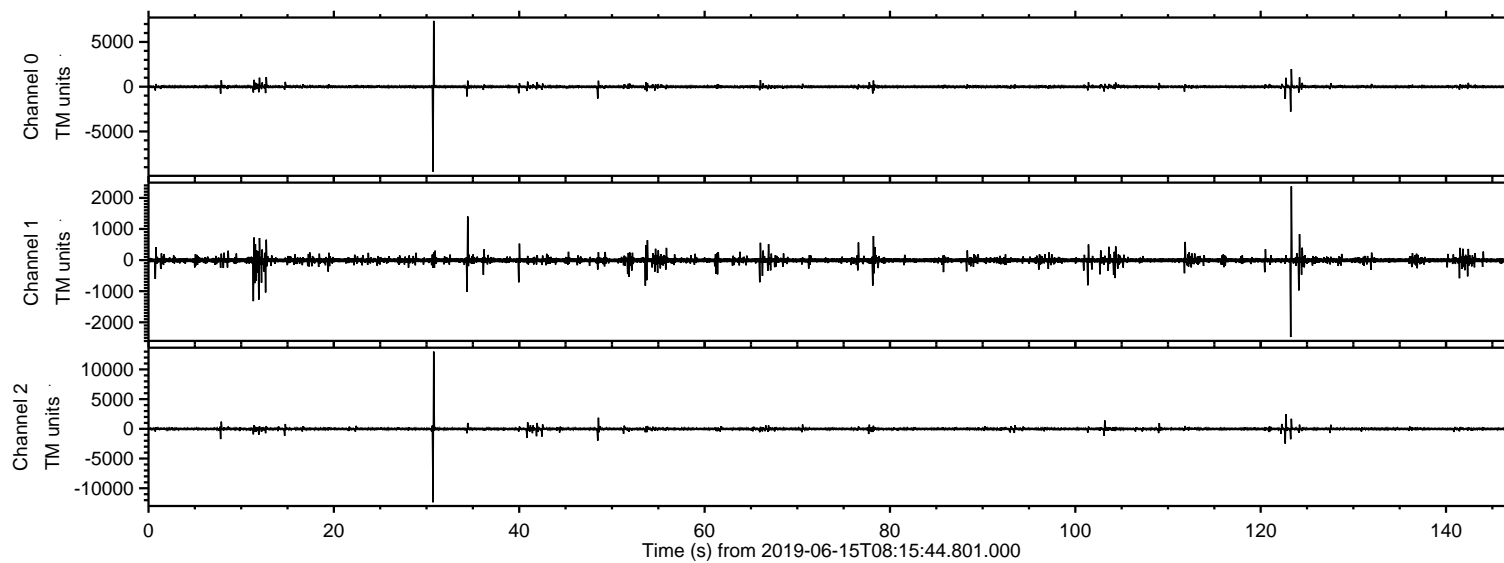
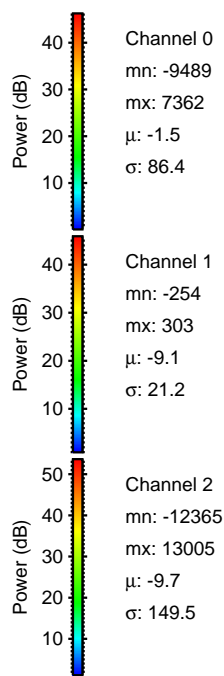
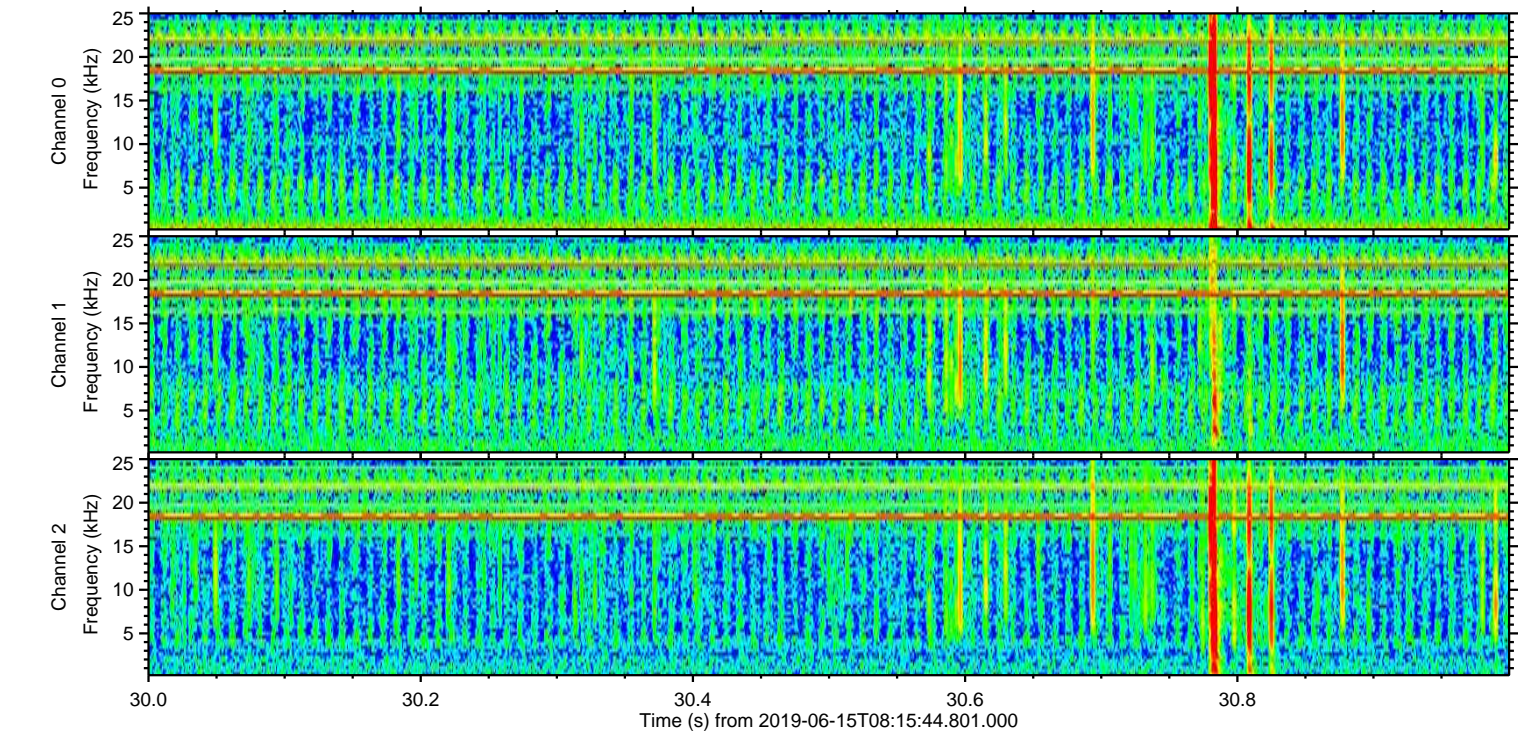
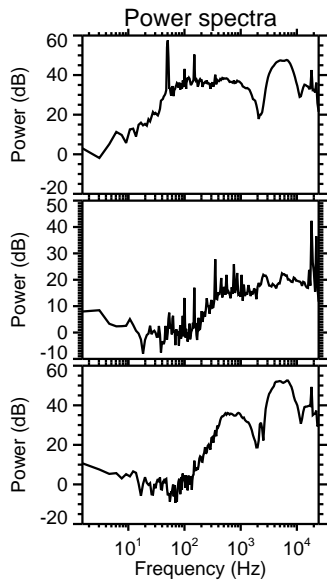
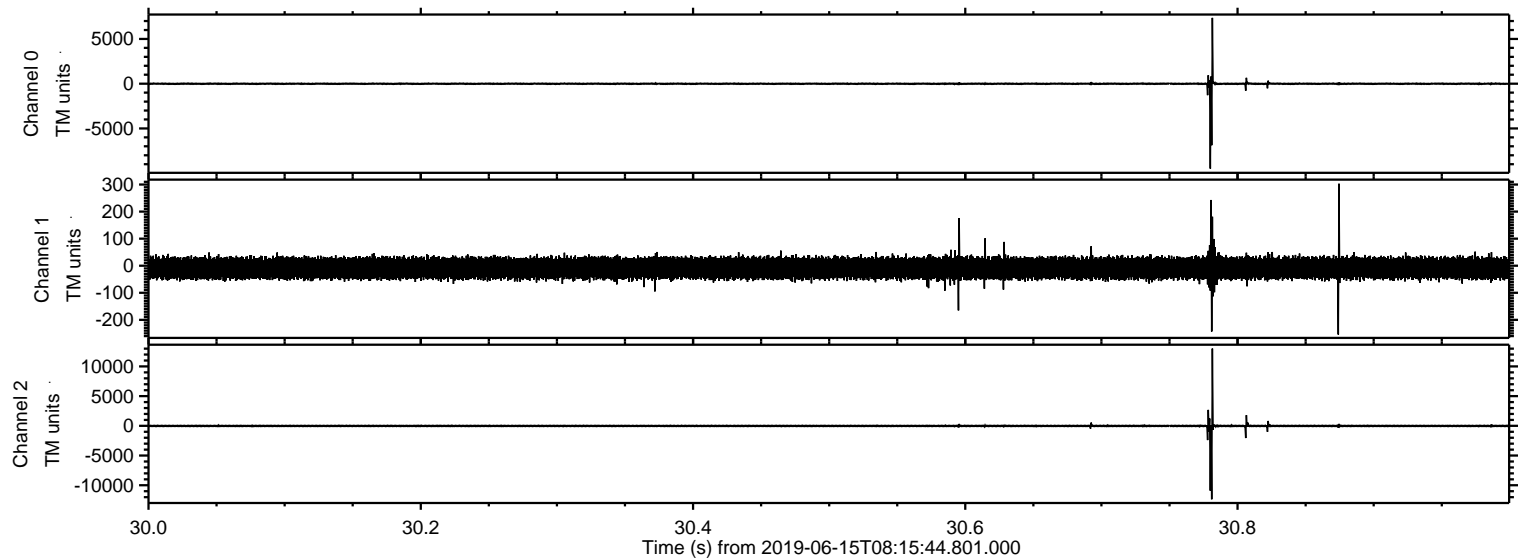


ELMAVAN 3D WAVEFORMS (Measured data sampled at 50 kHz) 51000 packets of 144 samples from 2019-06-15T08:15:44.801.000.

Processed Sat Jun 15 10:23:40 2019 by ELM ver.2012-10-06 from 001__elm20190615_081543__dat00.bin

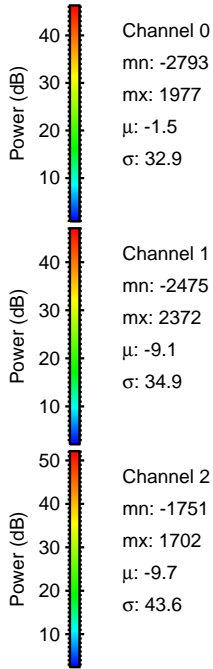
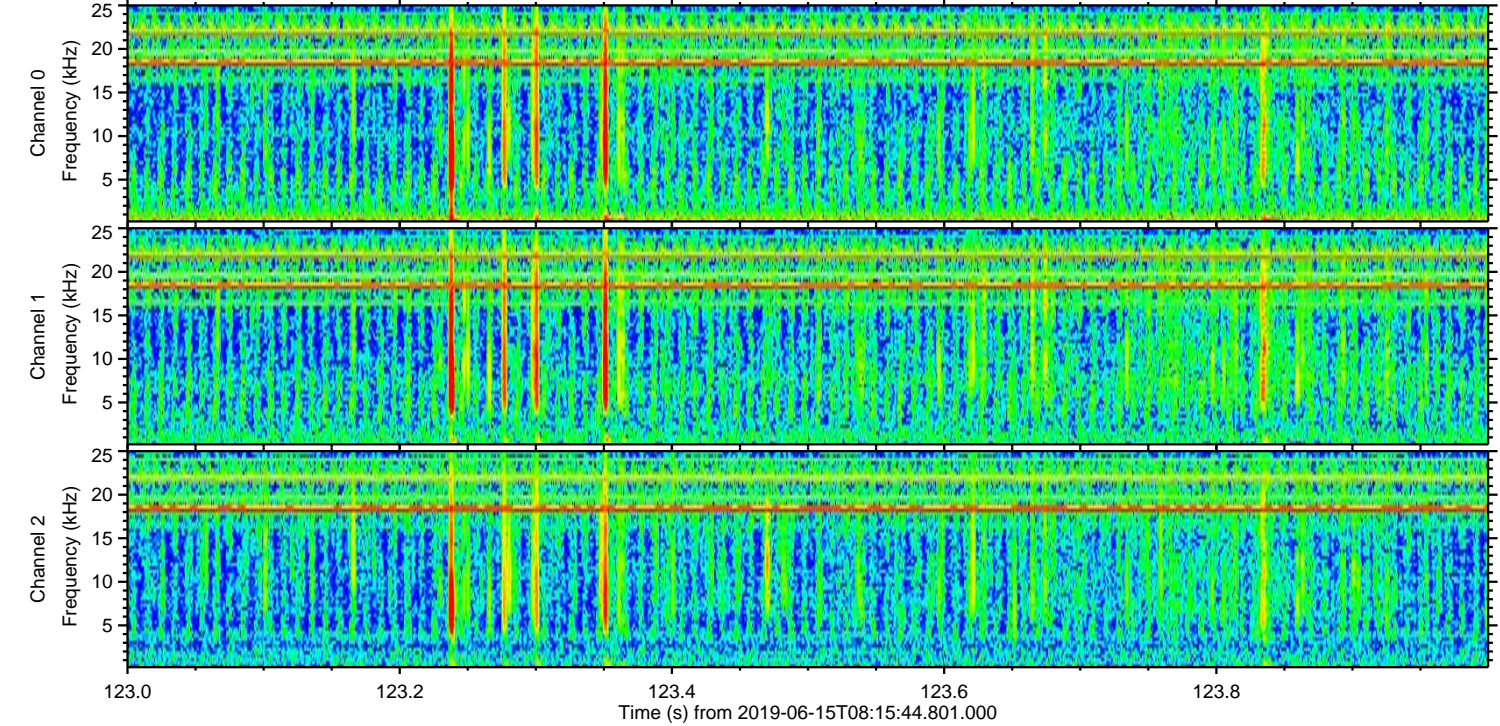
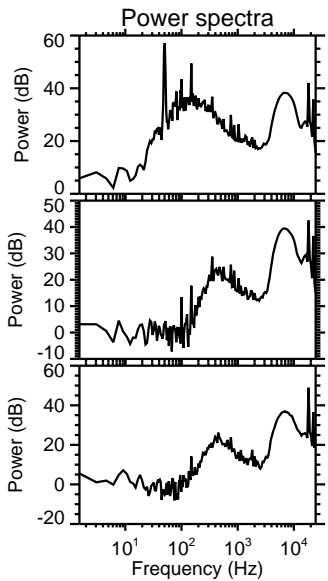
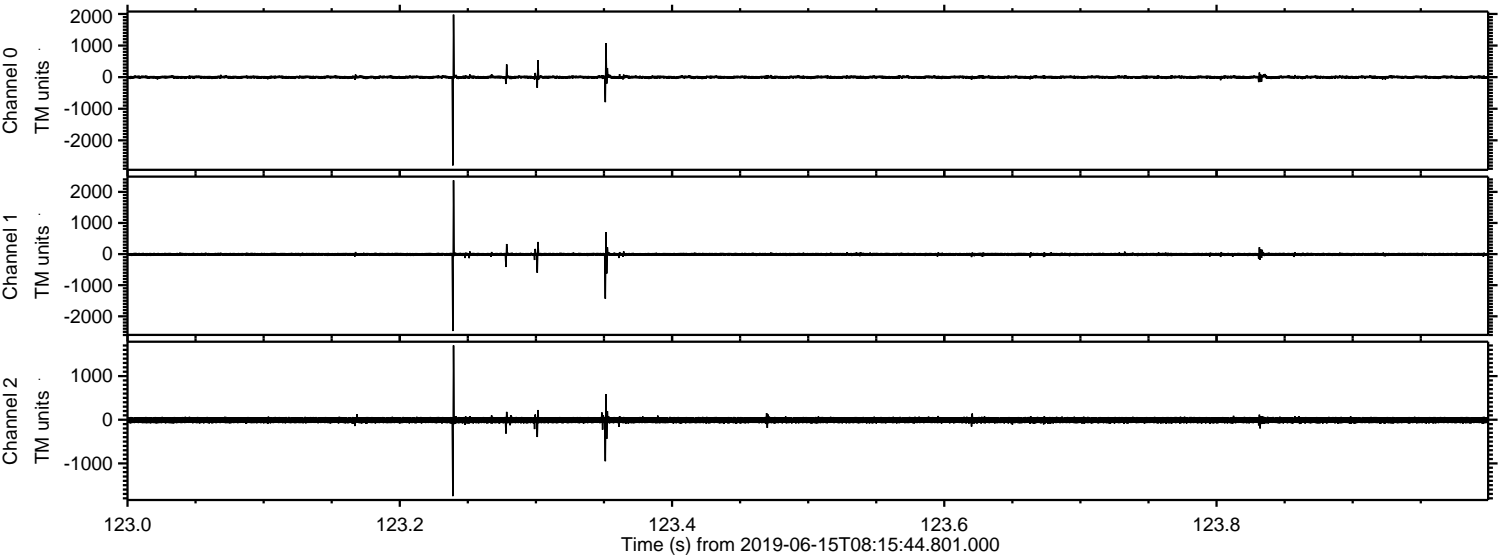


Processed Sat Jun 15 10:23:46 2019 by ELM ver.2012-10-06 from 001__elm20190615_081543__dat00.bin



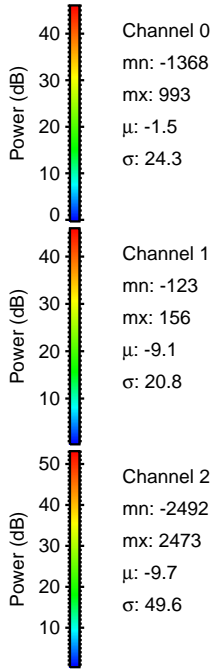
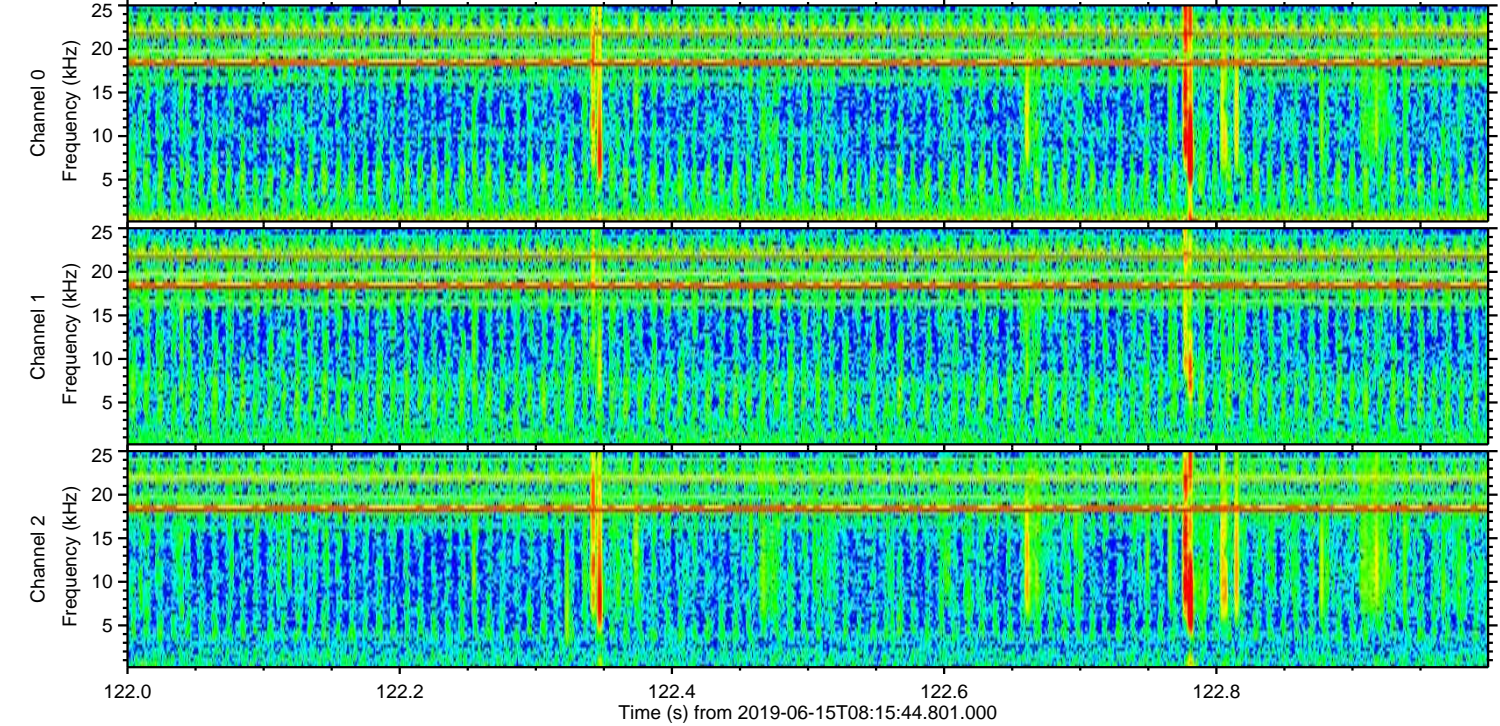
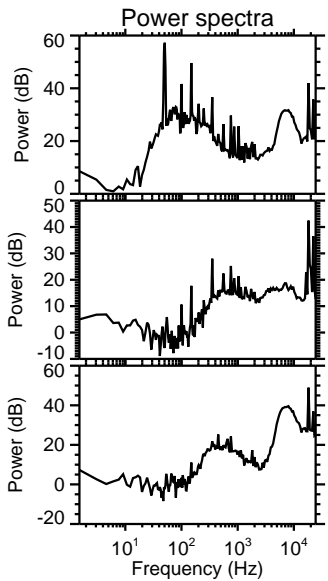
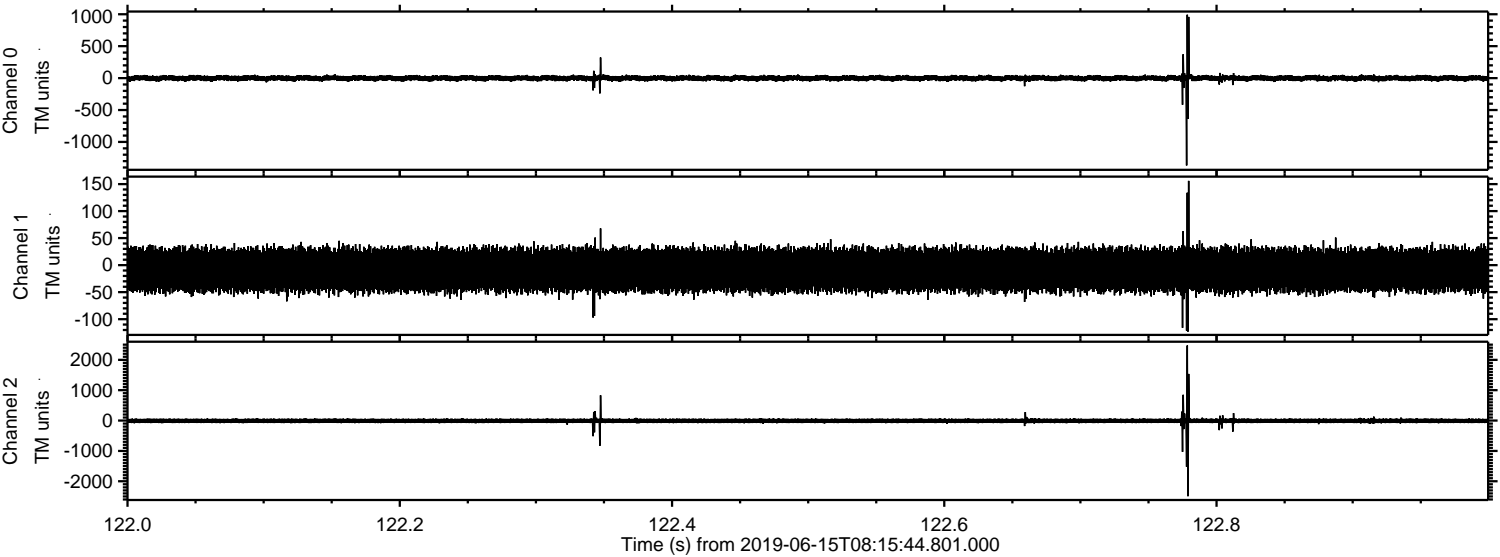
ELMAVAN 3D WAVEFORMS (Measured data sampled at 50 kHz) 51000 packets of 144 samples from 2019-06-15T08:15:44.801.000. Part 124/147

Processed Sat Jun 15 10:23:47 2019 by ELM ver.2012-10-06 from 001__elm20190615_081543__dat00.bin



ELMAVAN 3D WAVEFORMS (Measured data sampled at 50 kHz) 51000 packets of 144 samples from 2019-06-15T08:15:44.801.000. Part 123/147

Processed Sat Jun 15 10:23:48 2019 by ELM ver.2012-10-06 from 001__elm20190615_081543__dat00.bin

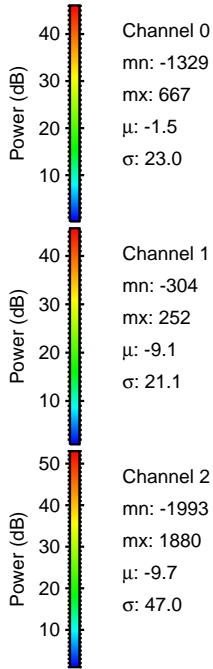
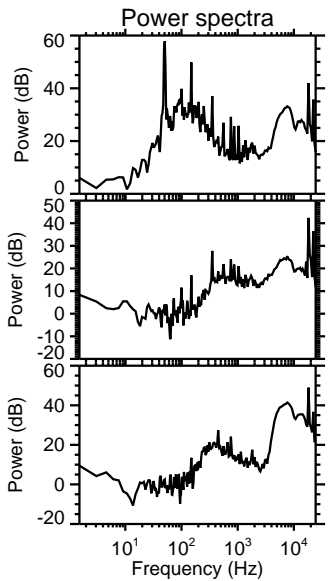
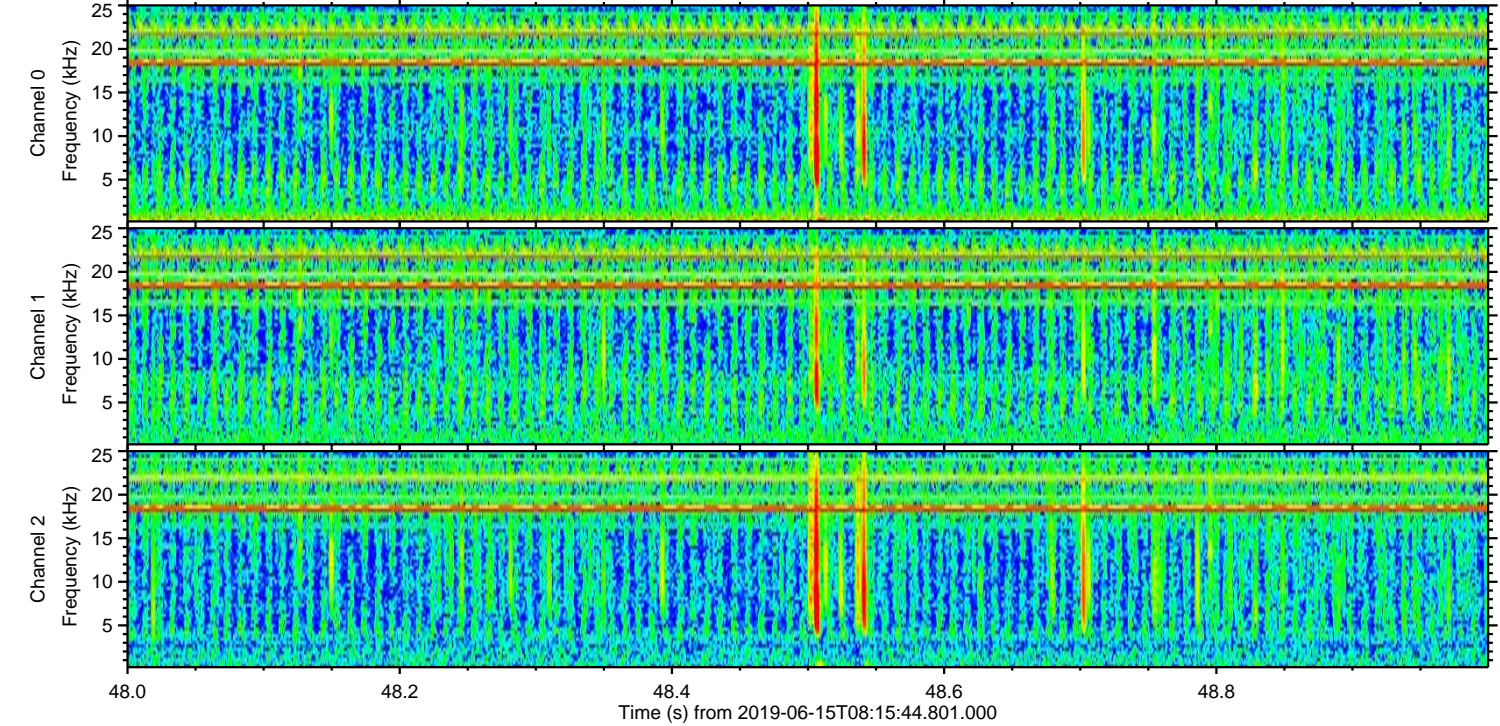
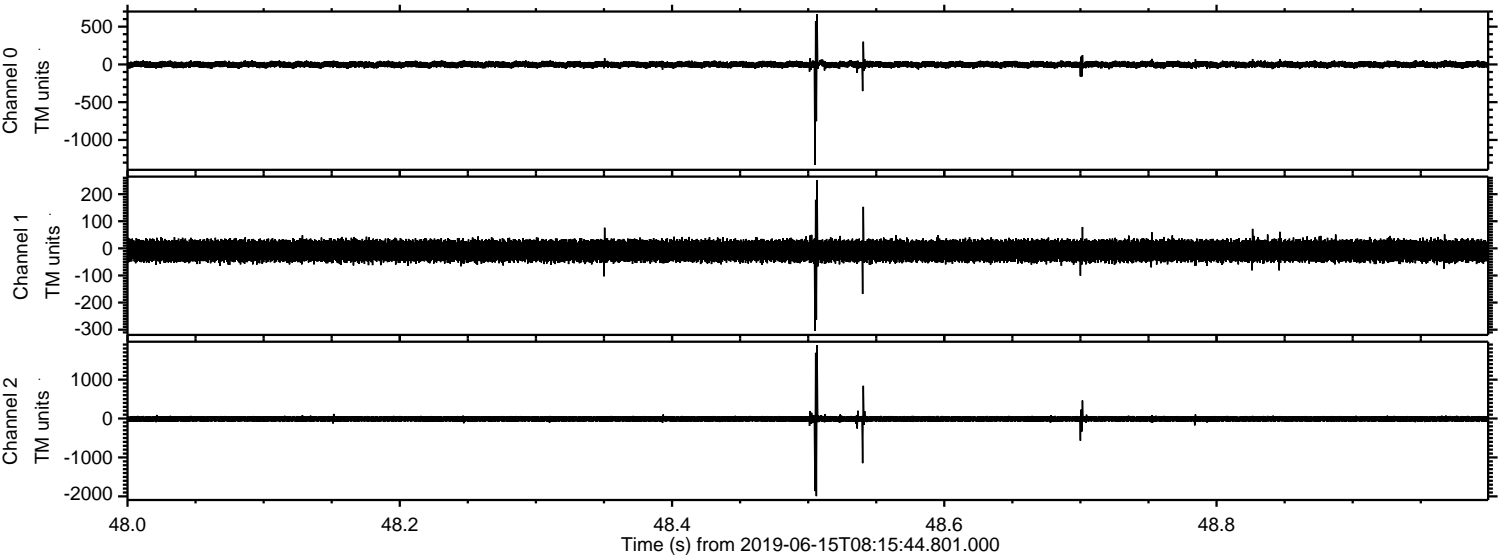


Channel 0
mn: -1368
mx: 993
 μ : -1.5
 σ : 24.3

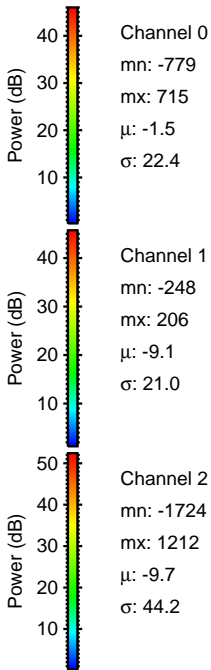
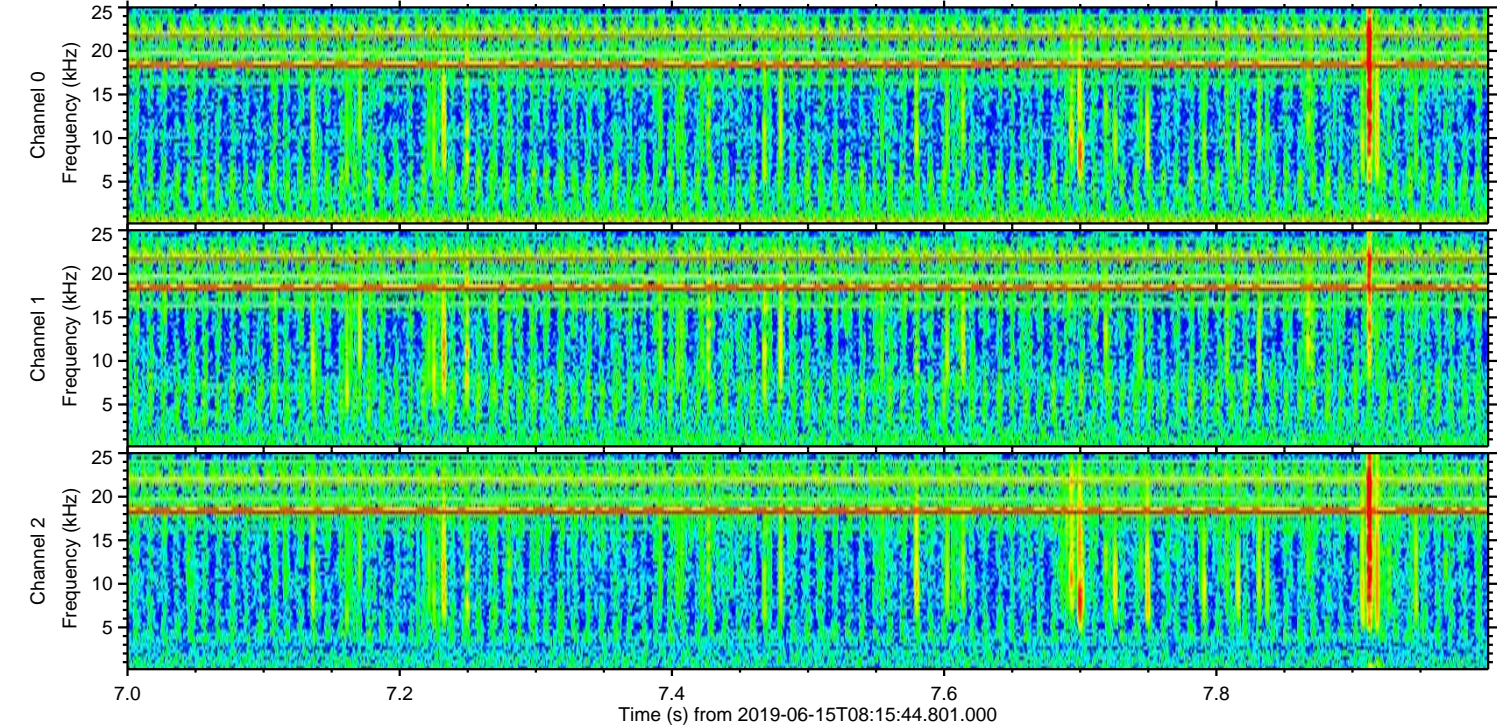
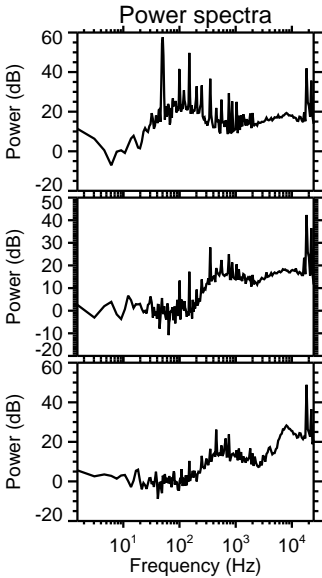
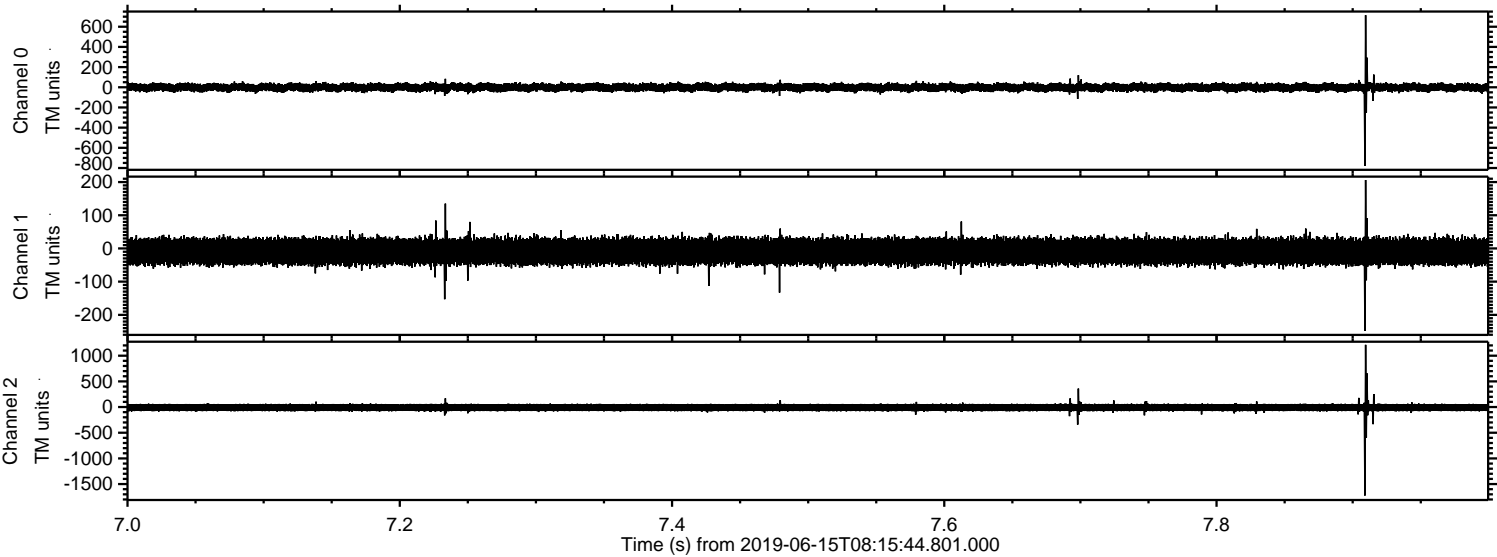
Channel 1
mn: -123
mx: 156
 μ : -9.1
 σ : 20.8

Channel 2
mn: -2492
mx: 2473
 μ : -9.7
 σ : 49.6

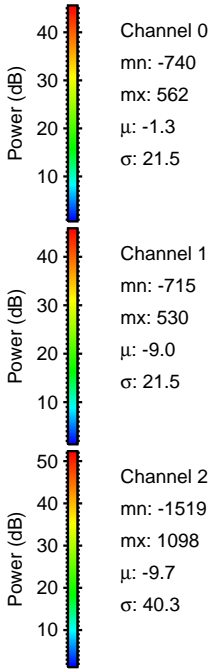
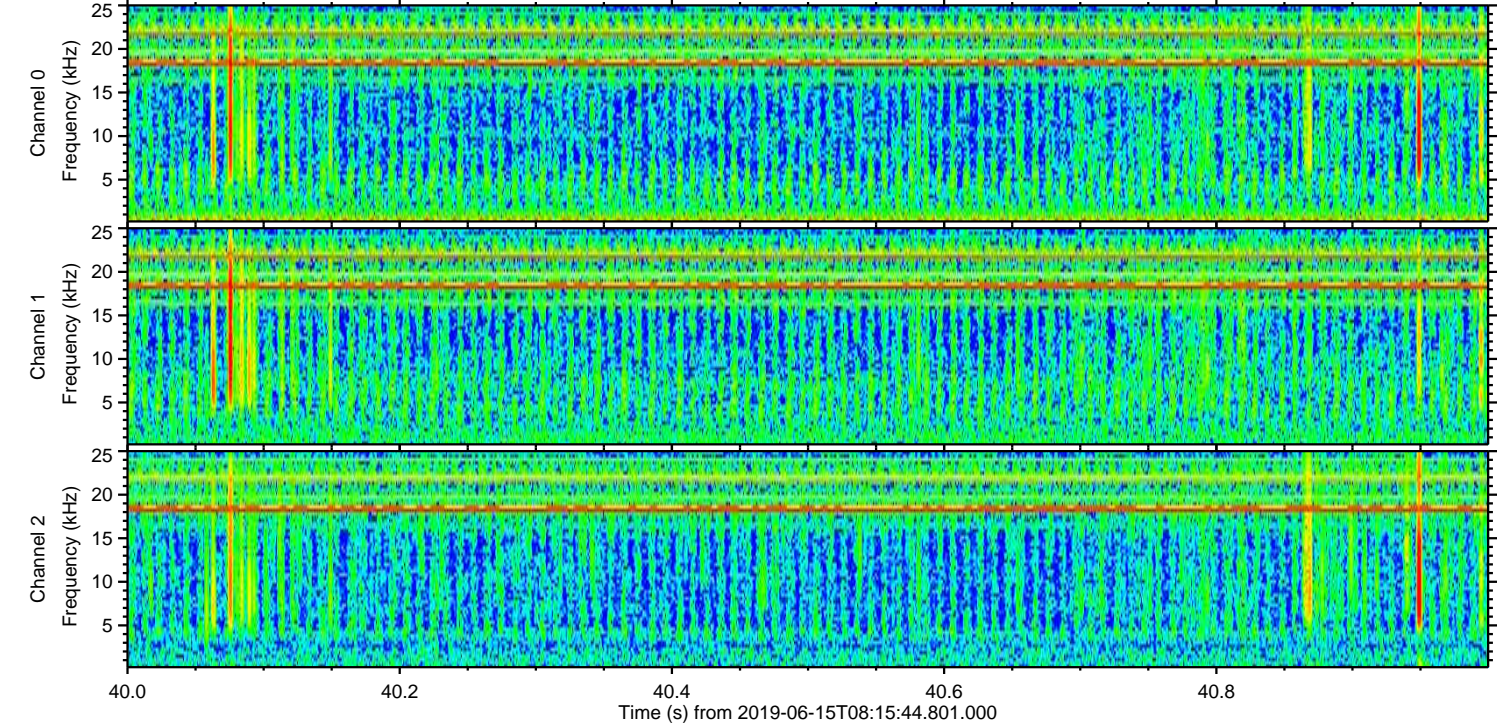
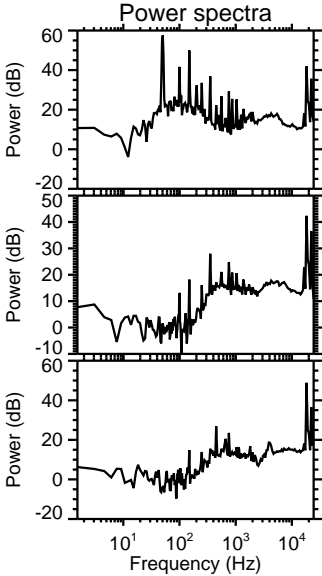
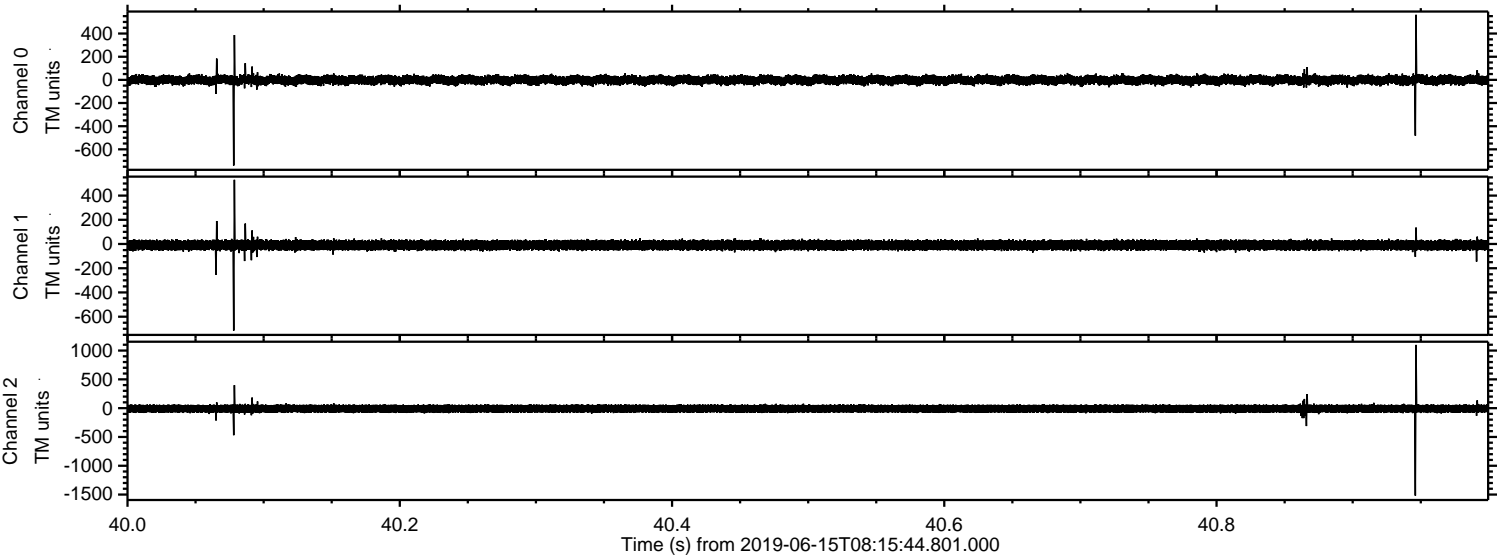
Processed Sat Jun 15 10:23:48 2019 by ELM ver.2012-10-06 from 001__elm20190615_081543__dat00.bin



Processed Sat Jun 15 10:23:49 2019 by ELM ver.2012-10-06 from 001__elm20190615_081543__dat00.bin

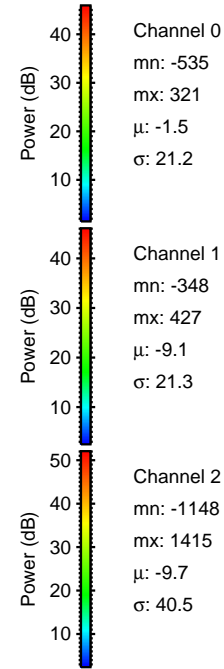
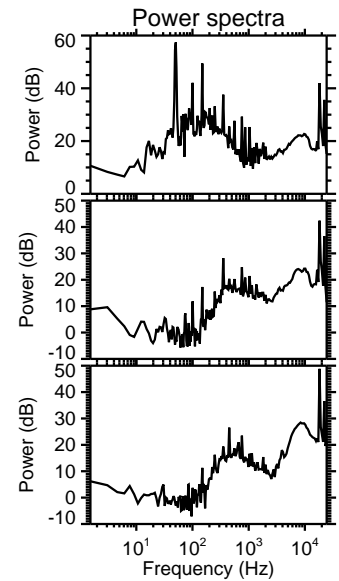
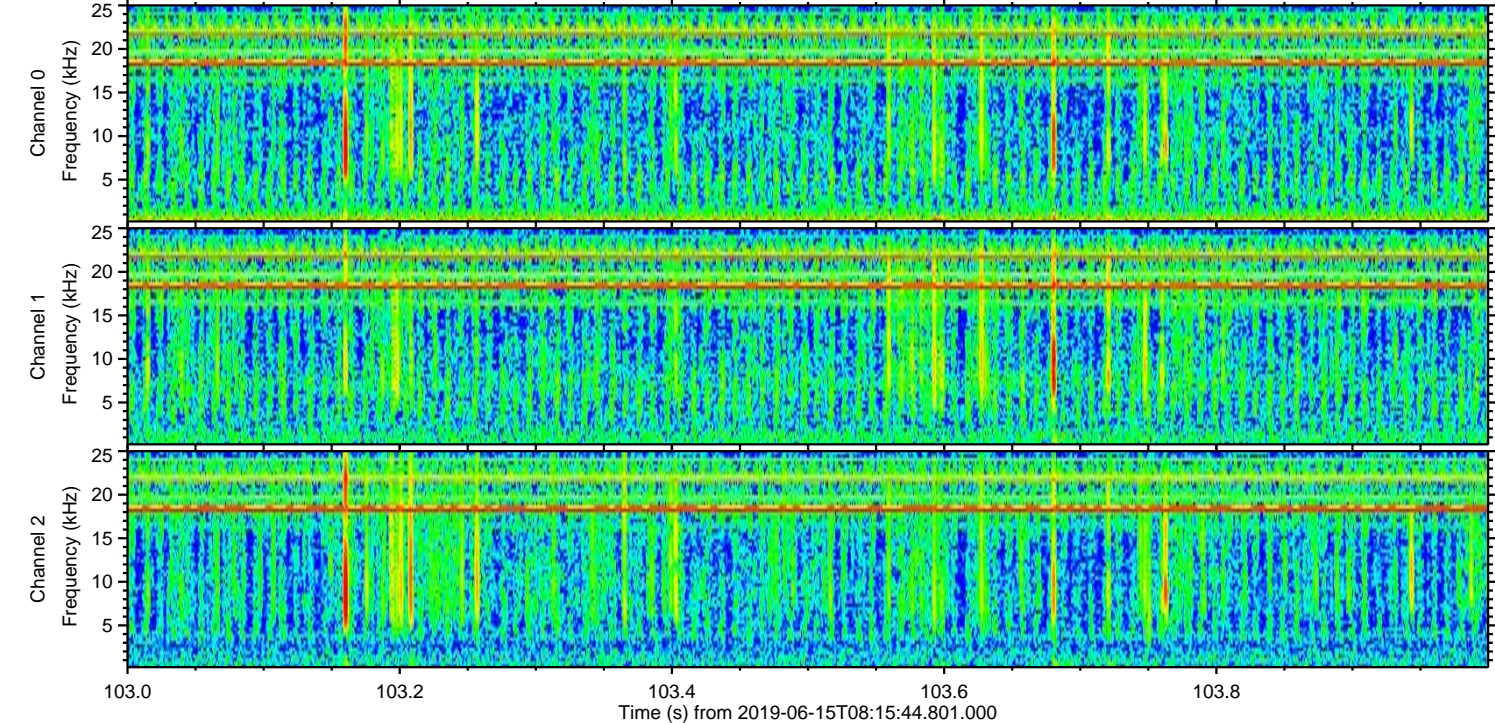
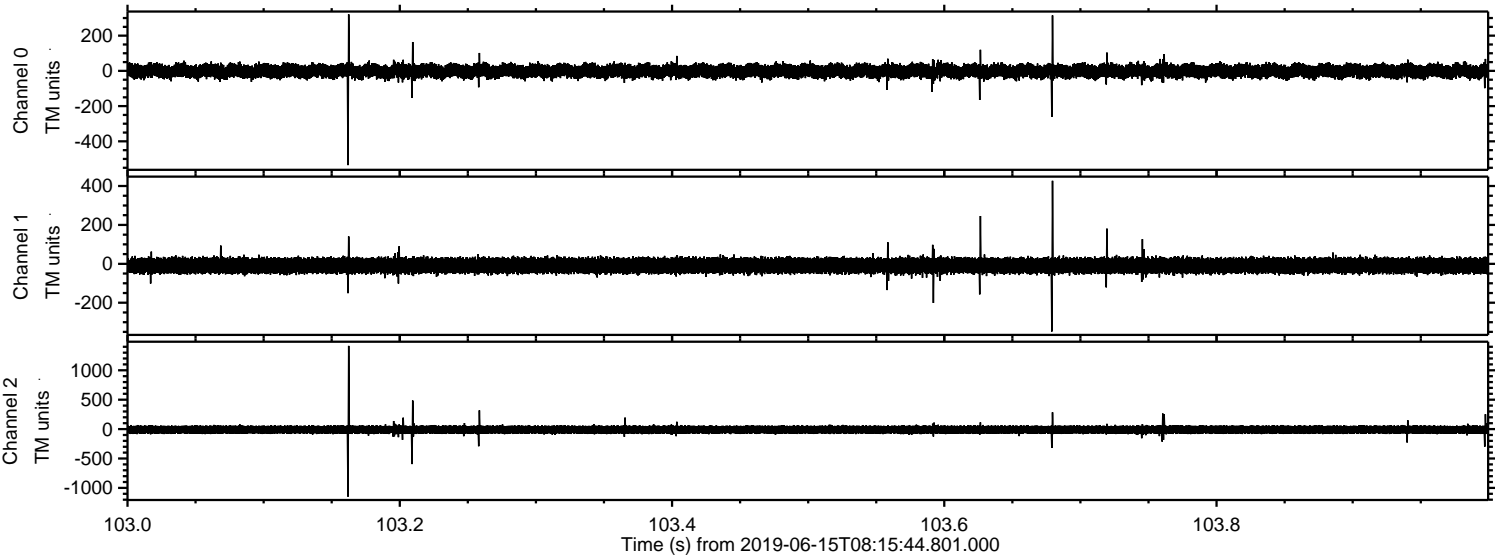


Processed Sat Jun 15 10:23:50 2019 by ELM ver.2012-10-06 from 001__elm20190615_081543__dat00.bin



ELMAVAN 3D WAVEFORMS (Measured data sampled at 50 kHz) 51000 packets of 144 samples from 2019-06-15T08:15:44.801.000. Part 104/147

Processed Sat Jun 15 10:23:50 2019 by ELM ver.2012-10-06 from 001__elm20190615_081543__dat00.bin

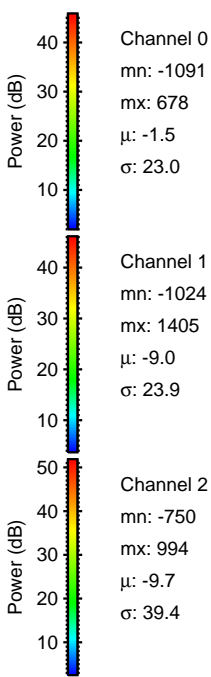
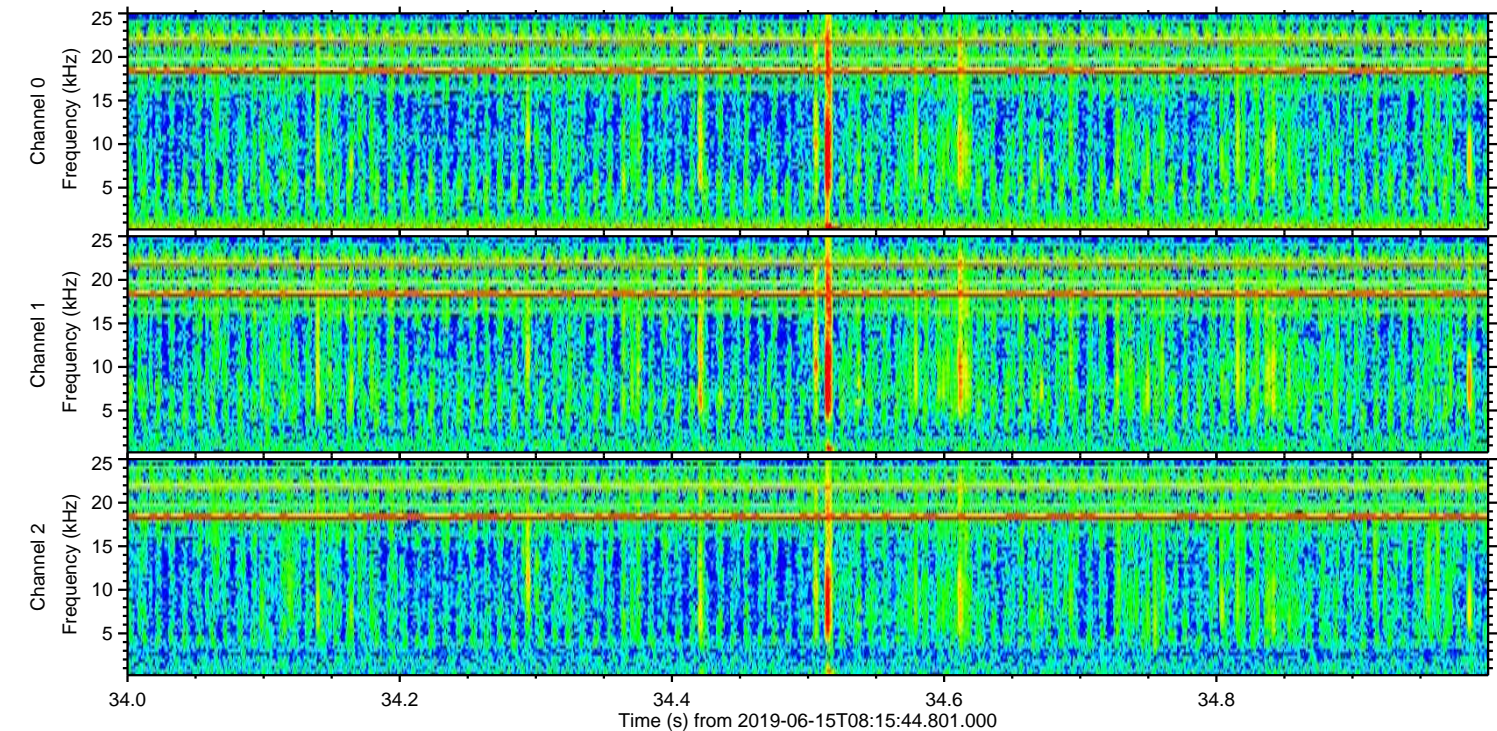
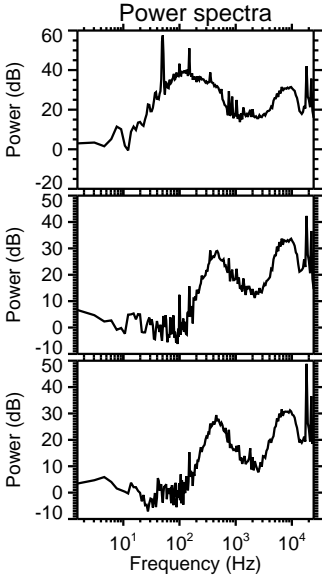
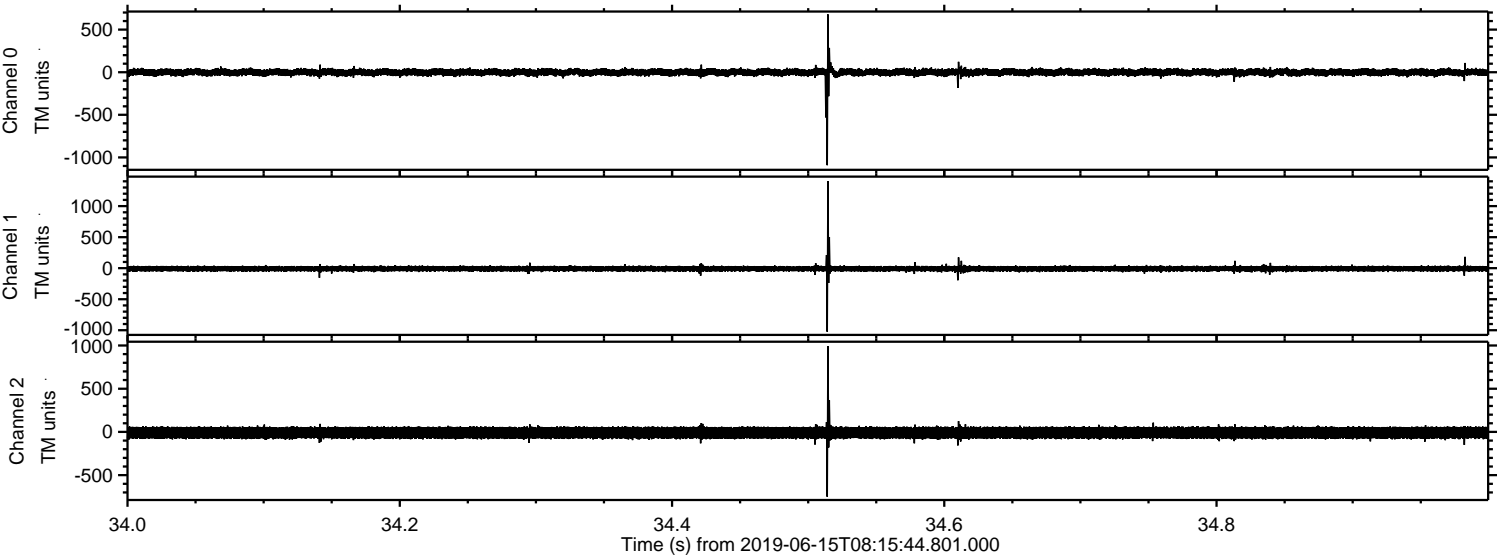


Channel 0
mn: -535
mx: 321
 μ : -1.5
 σ : 21.2

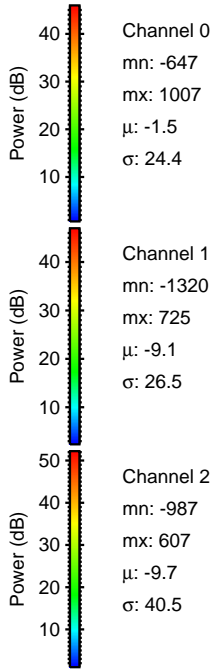
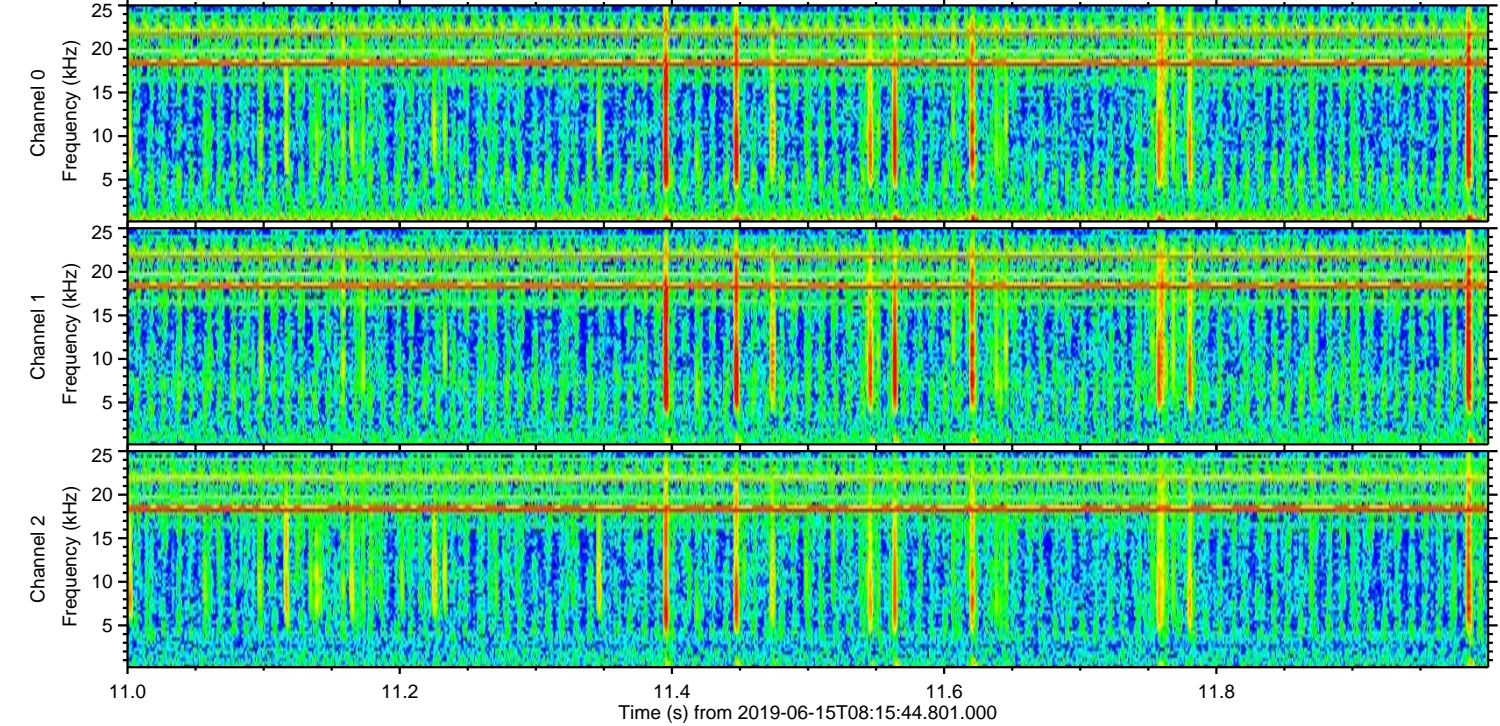
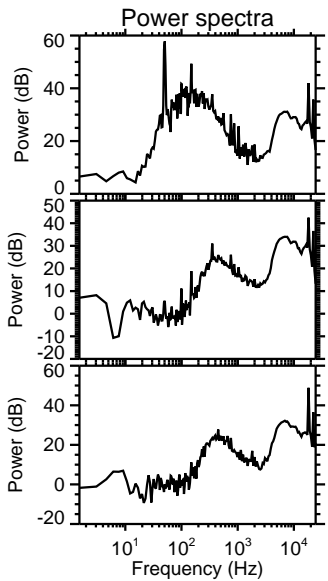
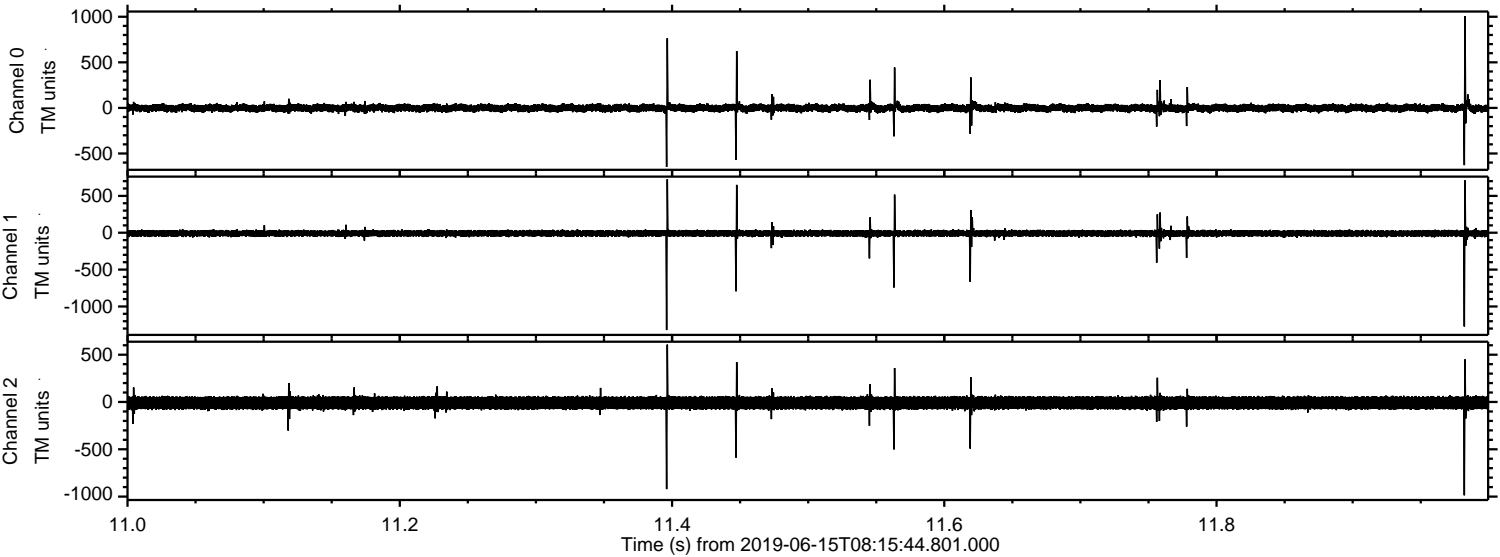
Channel 1
mn: -348
mx: 427
 μ : -9.1
 σ : 21.3

Channel 2
mn: -1148
mx: 1415
 μ : -9.7
 σ : 40.5

Processed Sat Jun 15 10:23:51 2019 by ELM ver.2012-10-06 from 001__elm20190615_081543__dat00.bin



Processed Sat Jun 15 10:23:51 2019 by ELM ver.2012-10-06 from 001__elm20190615_081543__dat00.bin



Processed Sat Jun 15 10:23:52 2019 by ELM ver.2012-10-06 from 001__elm20190615_081543__dat00.bin

