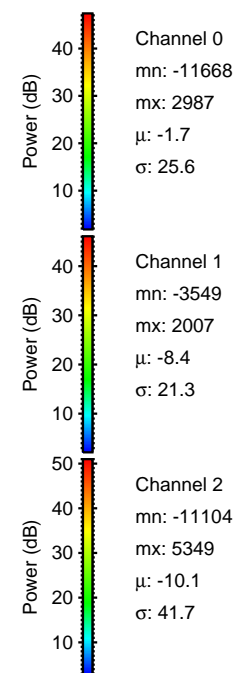
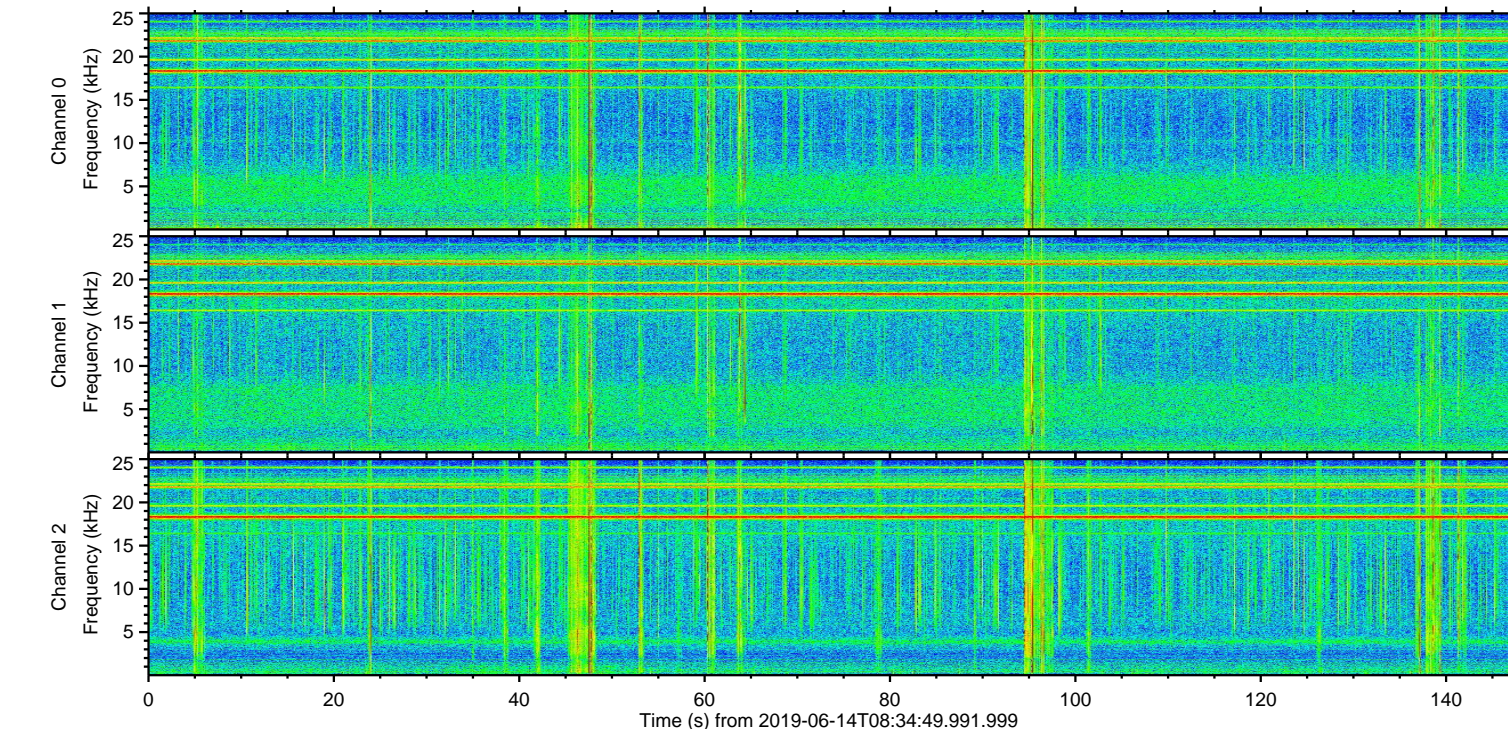
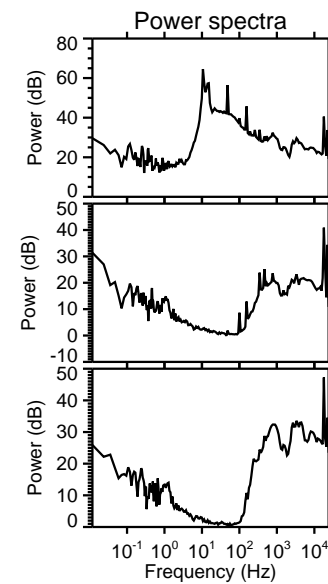
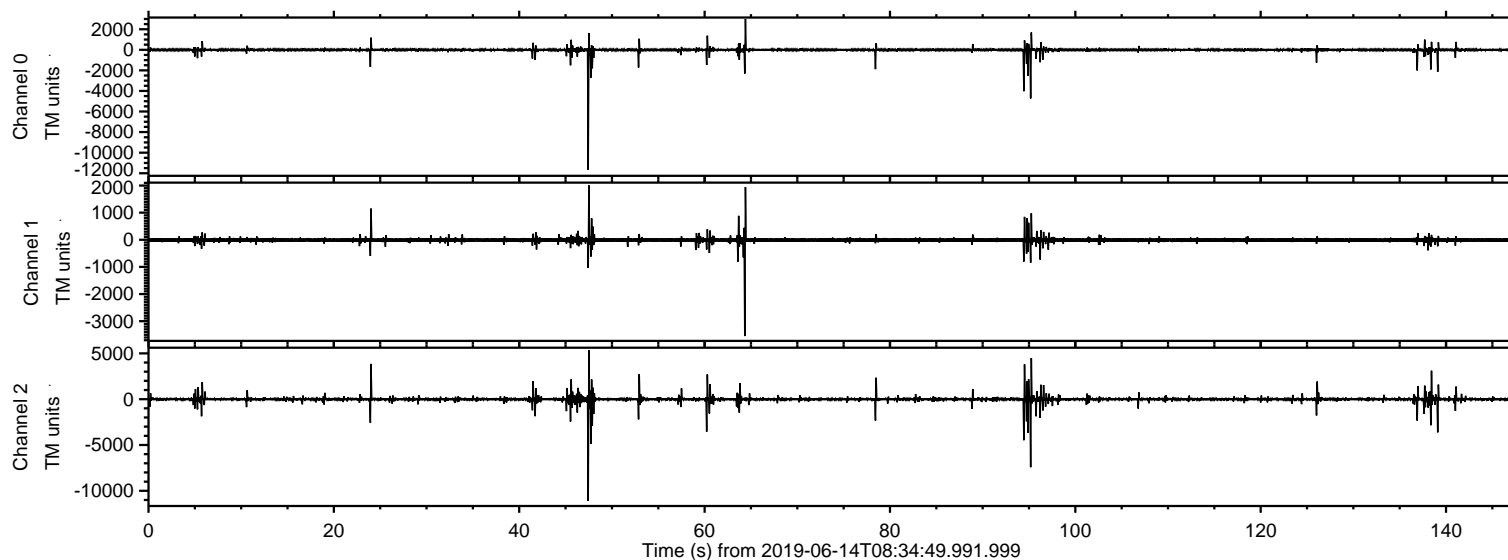
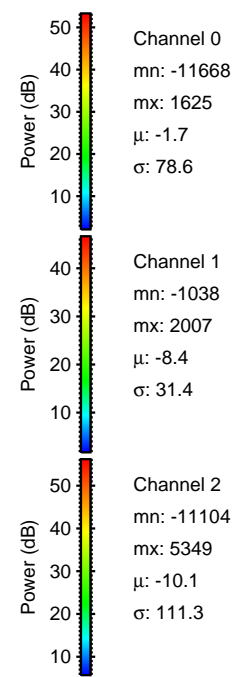
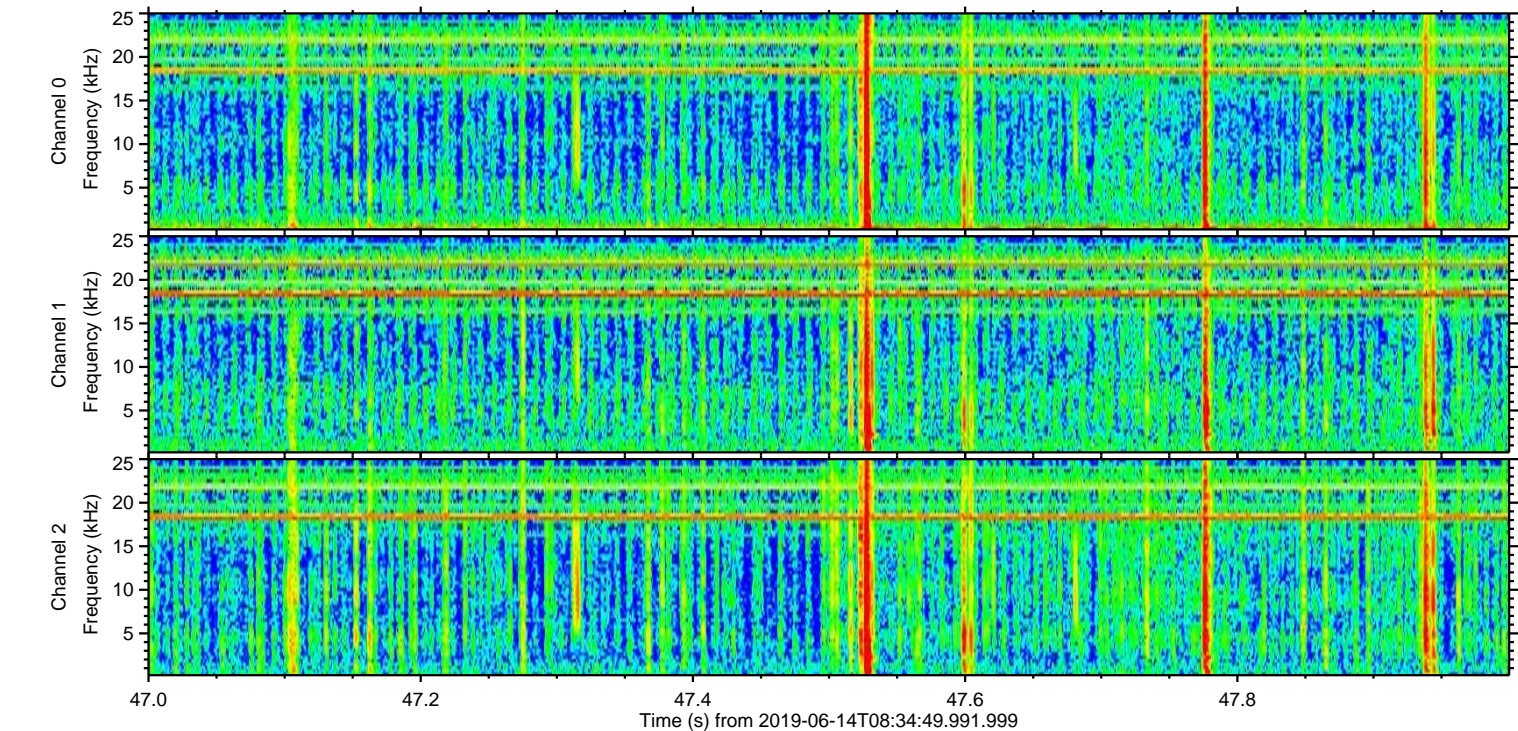
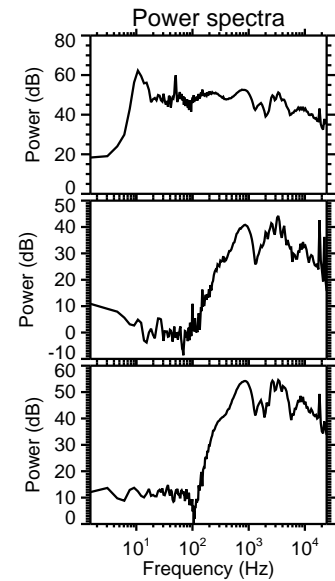
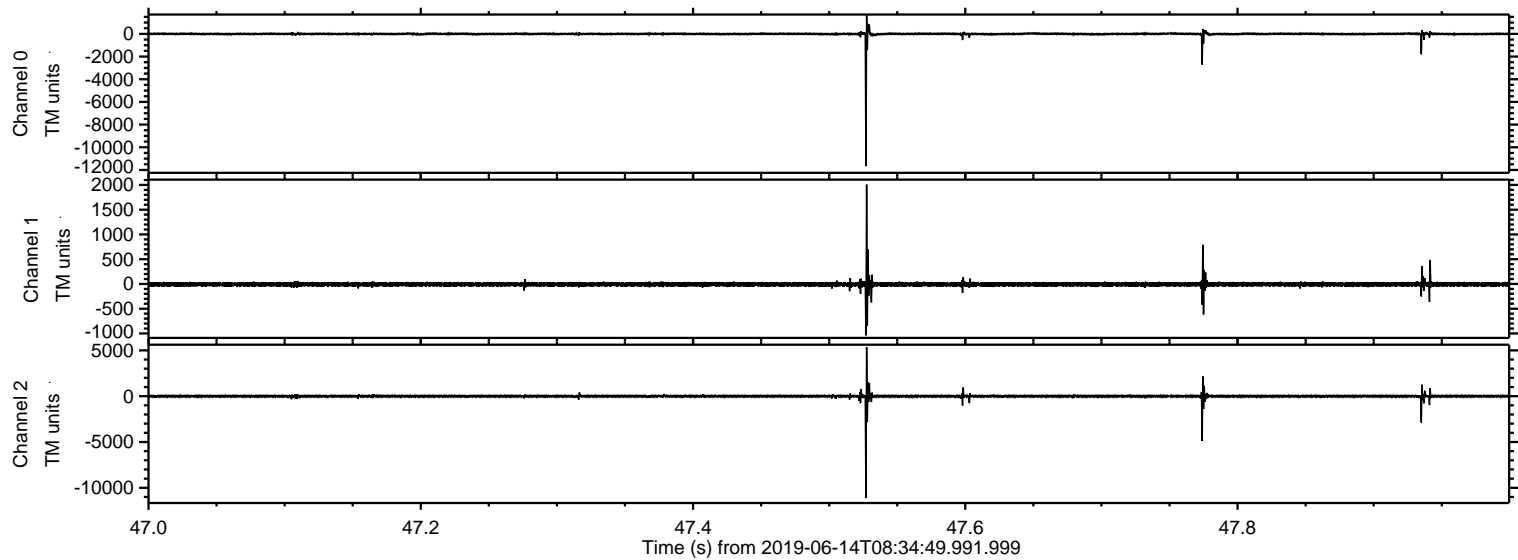


ELMAVAN 3D WAVEFORMS (Measured data sampled at 50 kHz) 51000 packets of 144 samples from 2019-06-14T08:34:49.991.999.

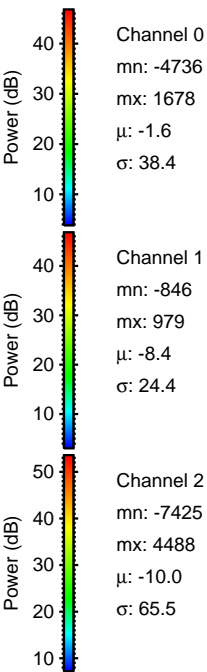
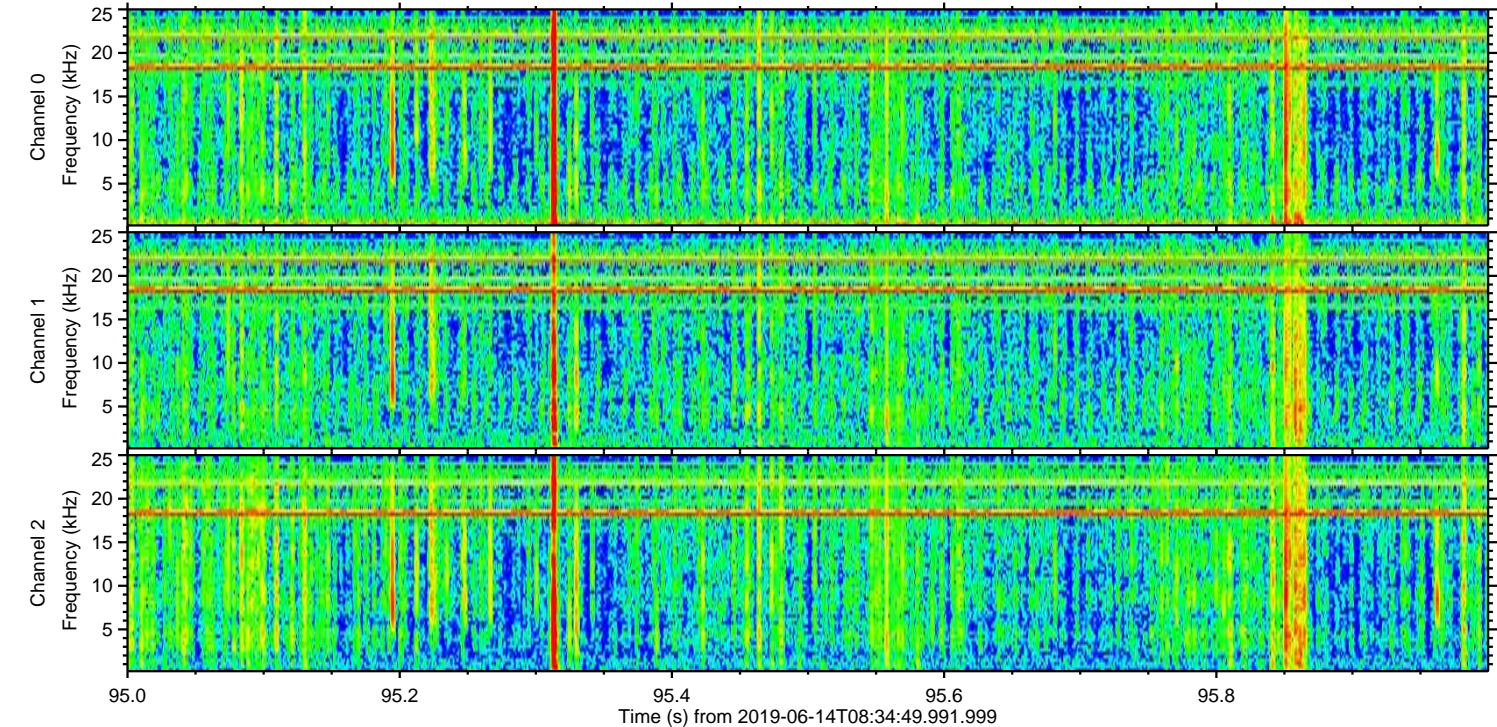
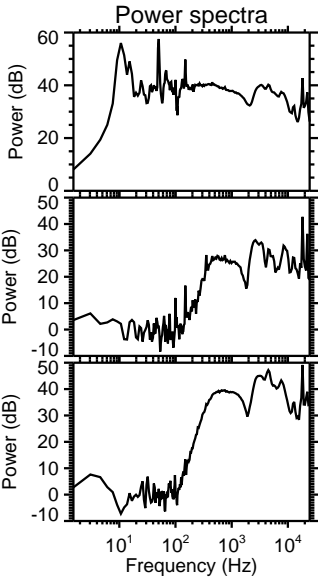
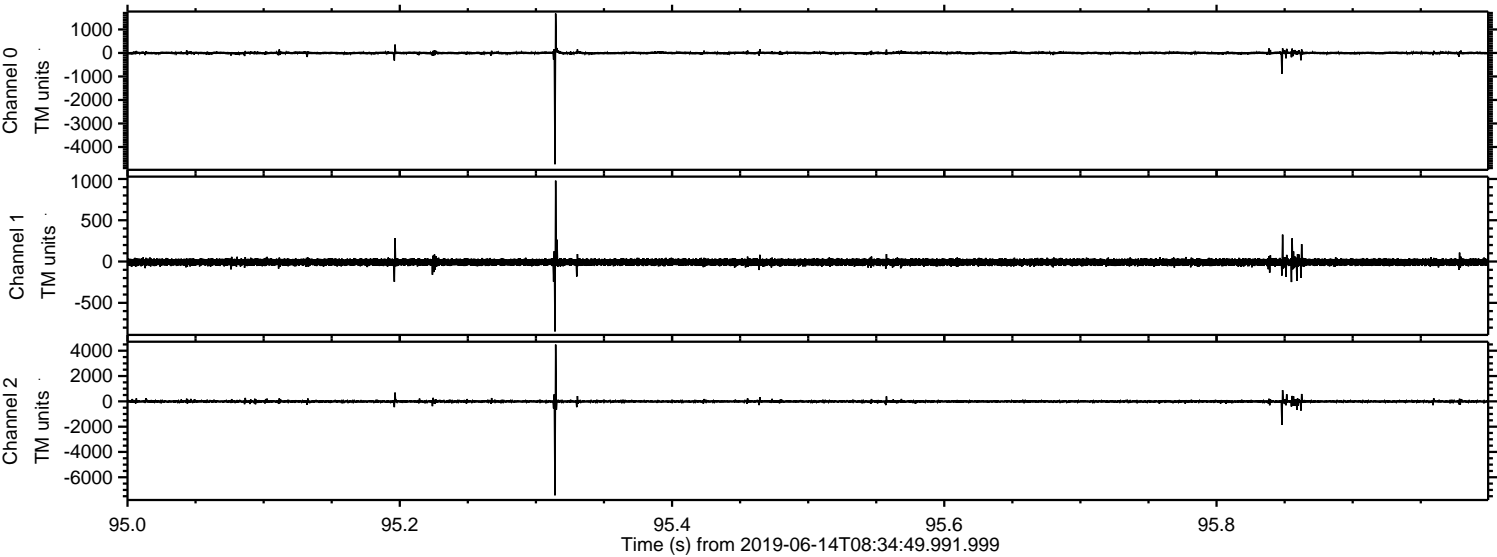
Processed Fri Jun 14 10:42:12 2019 by ELM ver.2012-10-06 from 001__elm20190614_083448__dat00.bin



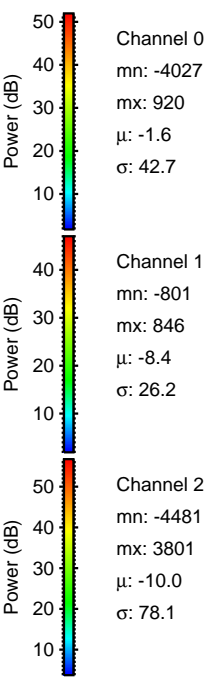
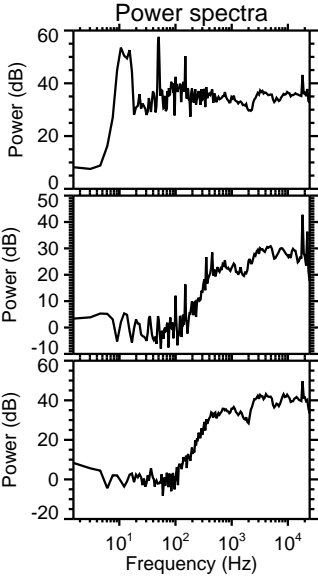
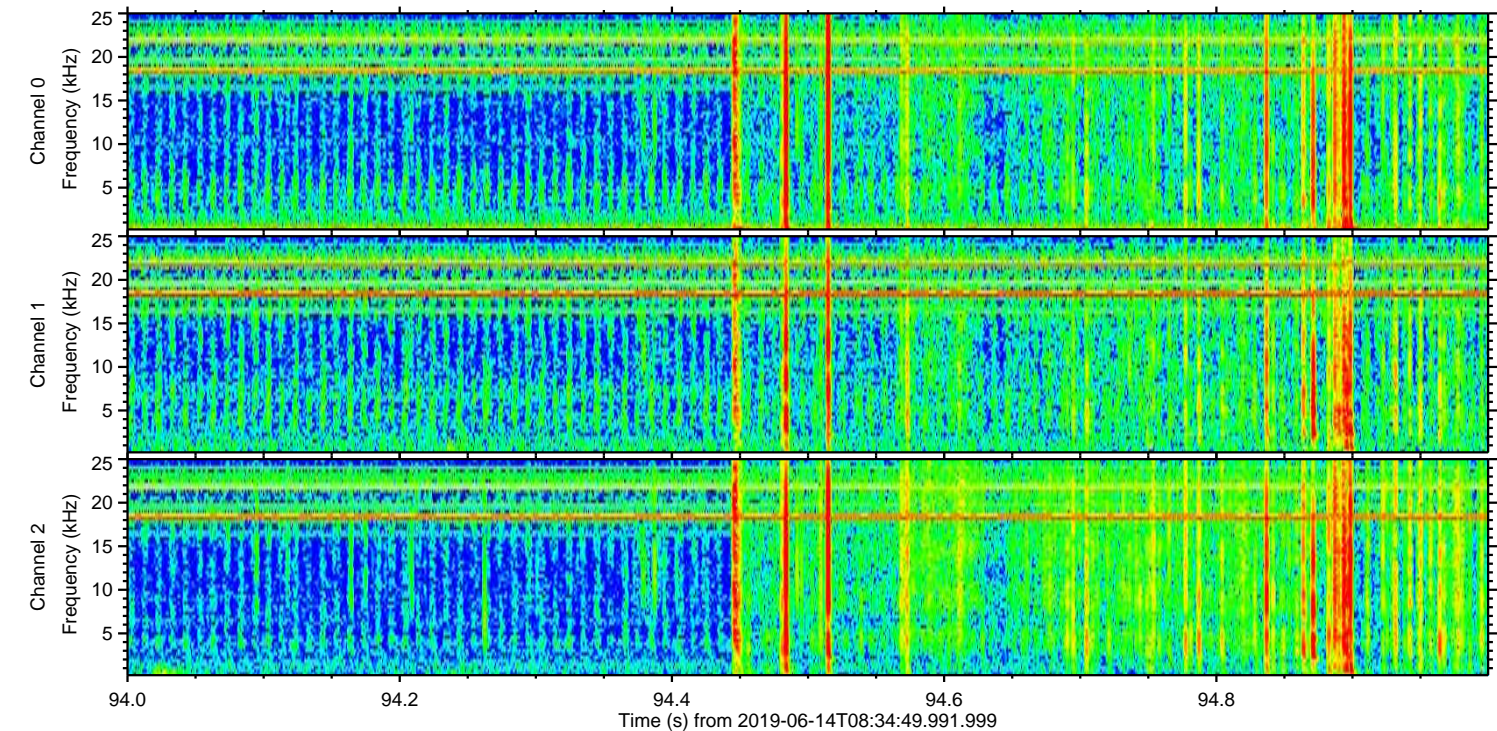
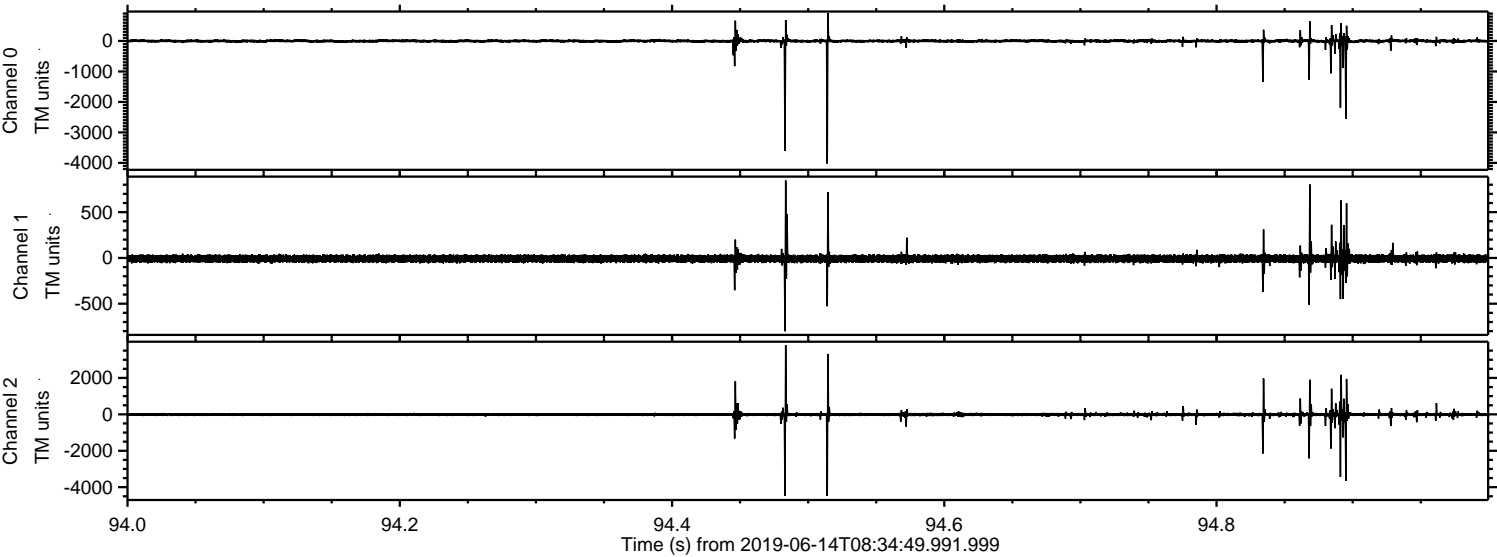
Processed Fri Jun 14 10:42:21 2019 by ELM ver.2012-10-06 from 001__elm20190614_083448__dat00.bin



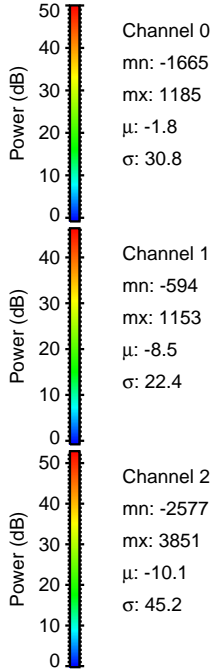
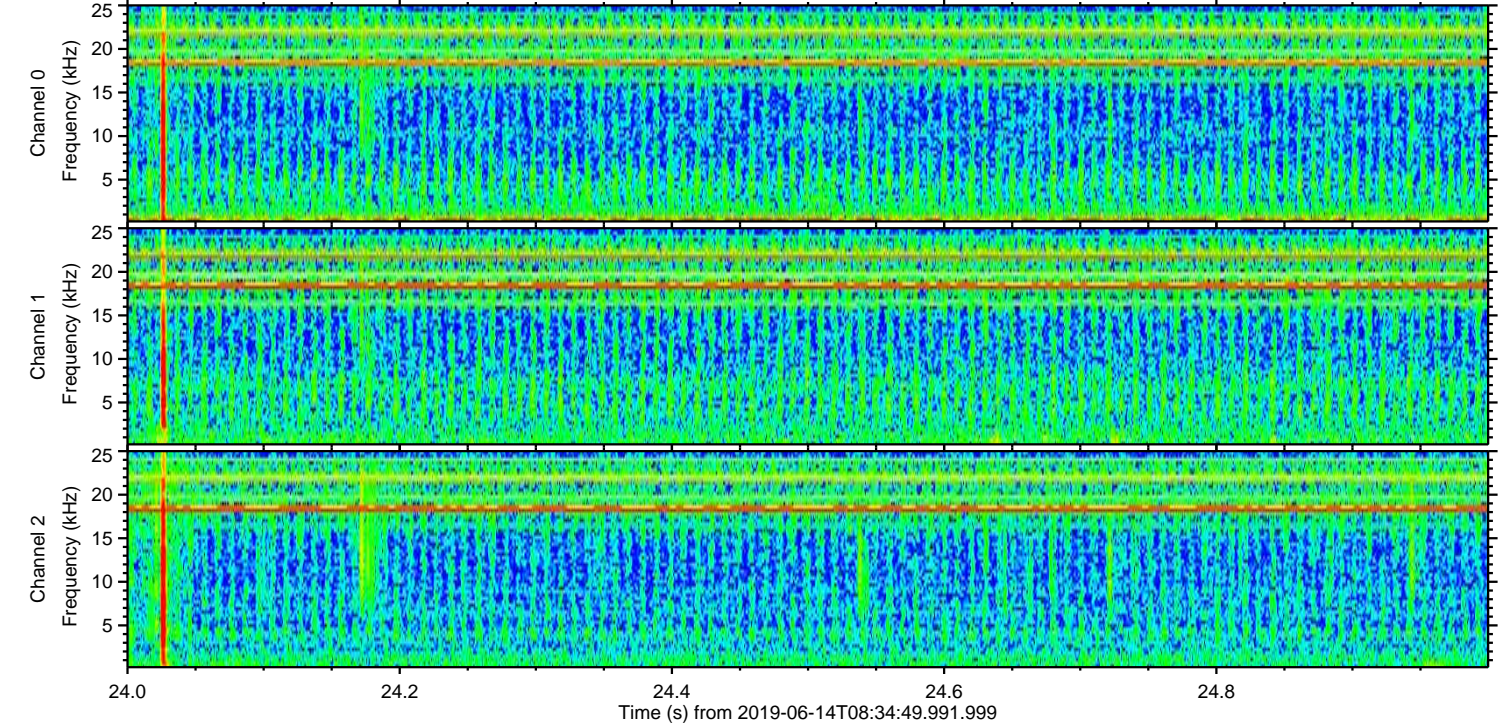
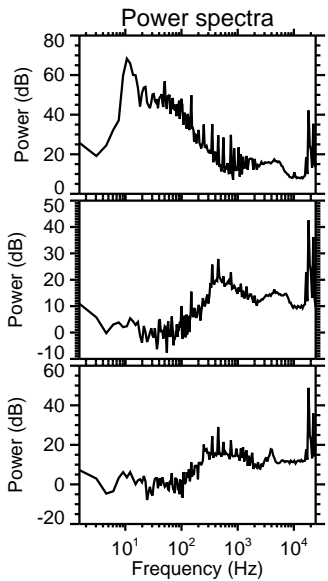
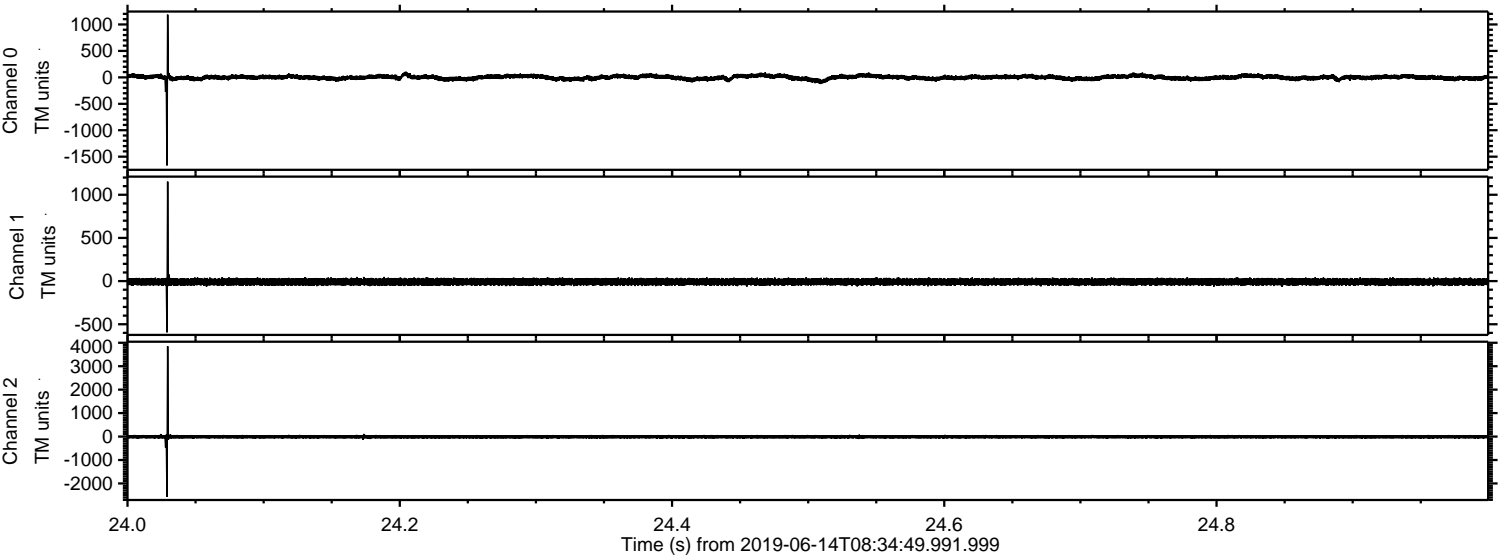
Processed Fri Jun 14 10:42:21 2019 by ELM ver.2012-10-06 from 001__elm20190614_083448__dat00.bin



Processed Fri Jun 14 10:42:22 2019 by ELM ver.2012-10-06 from 001__elm20190614_083448__dat00.bin

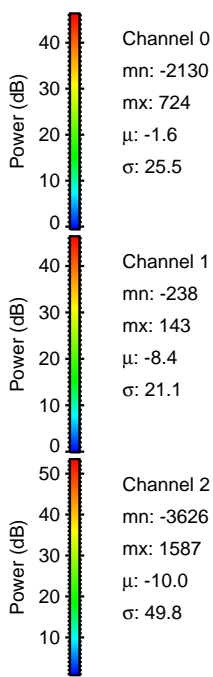
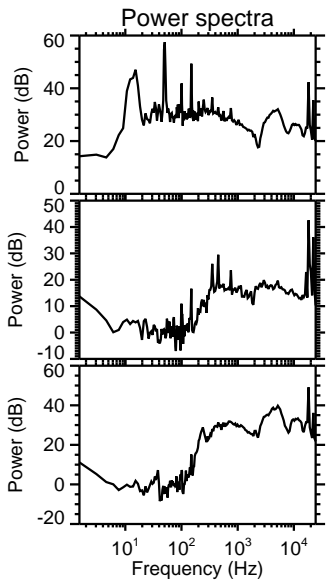
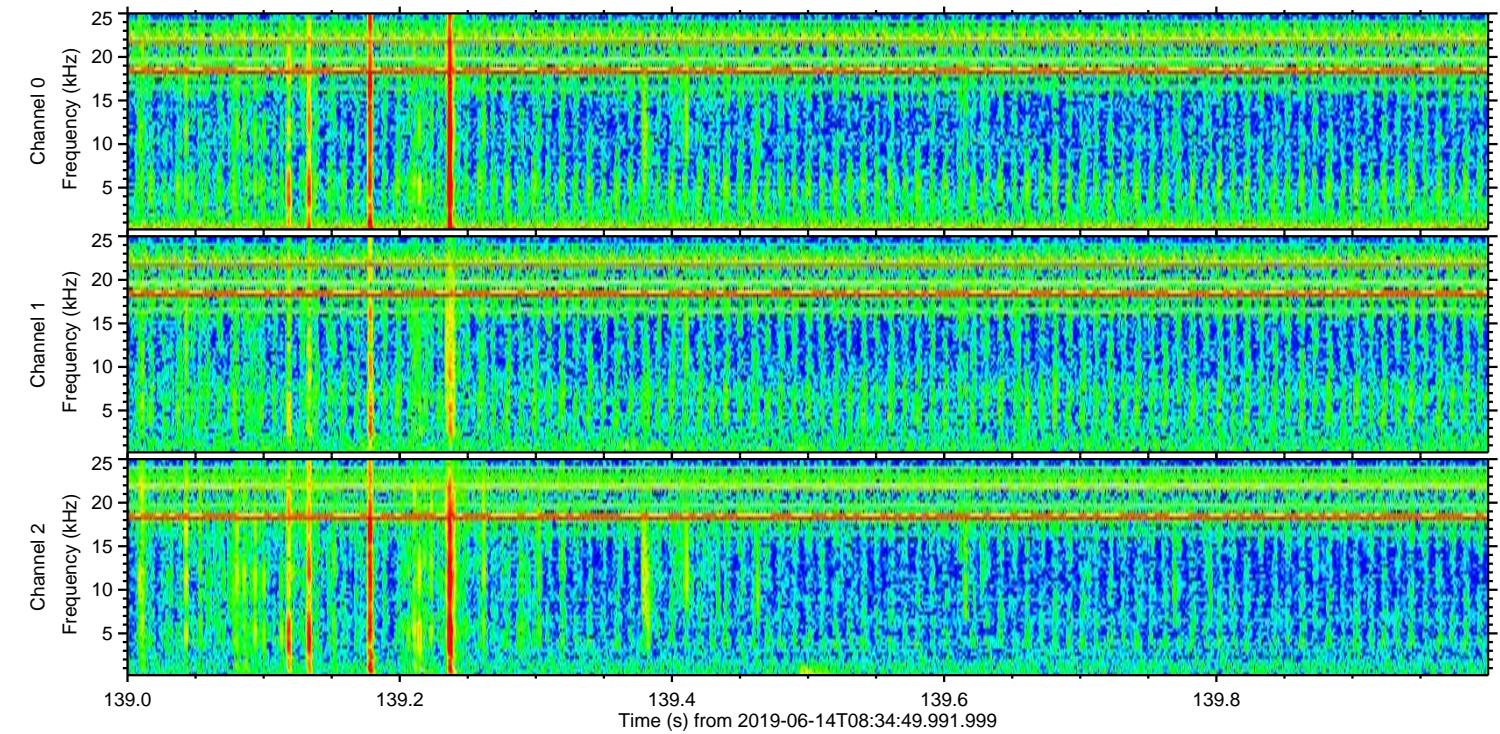
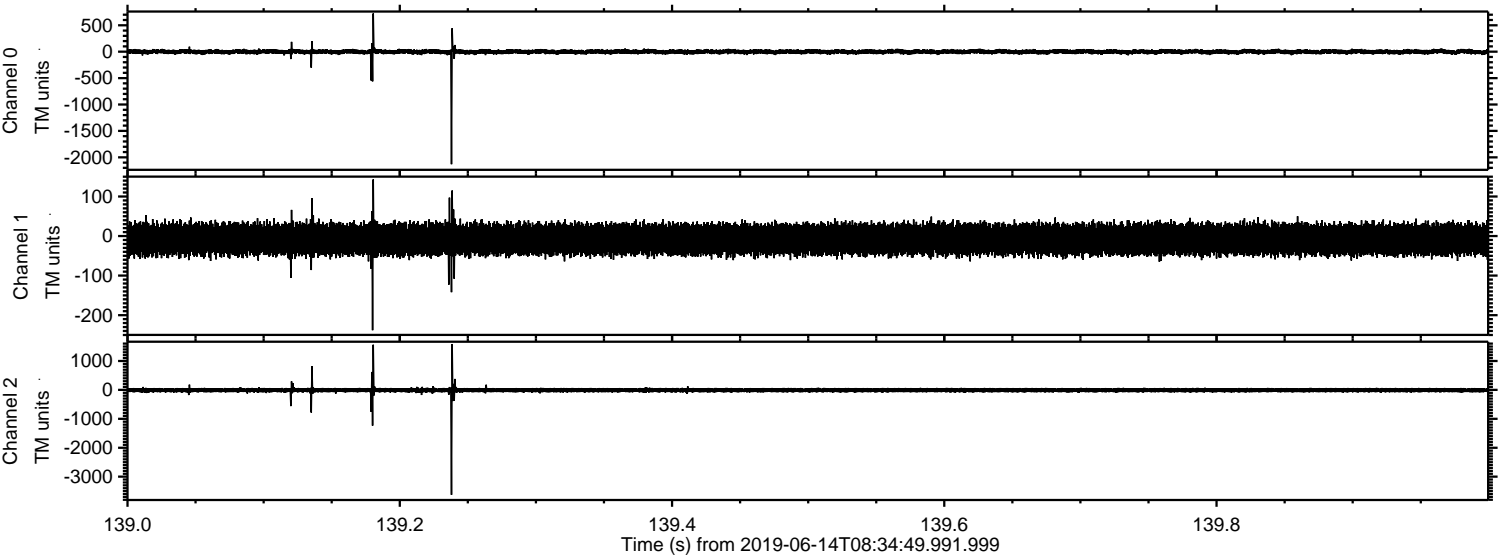


Processed Fri Jun 14 10:42:23 2019 by ELM ver.2012-10-06 from 001__elm20190614_083448__dat00.bin

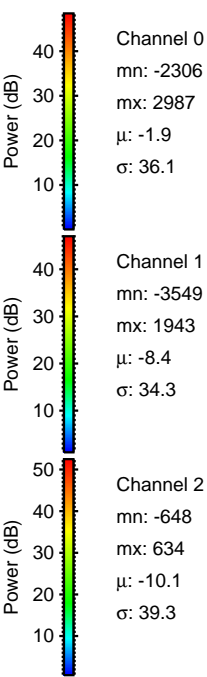
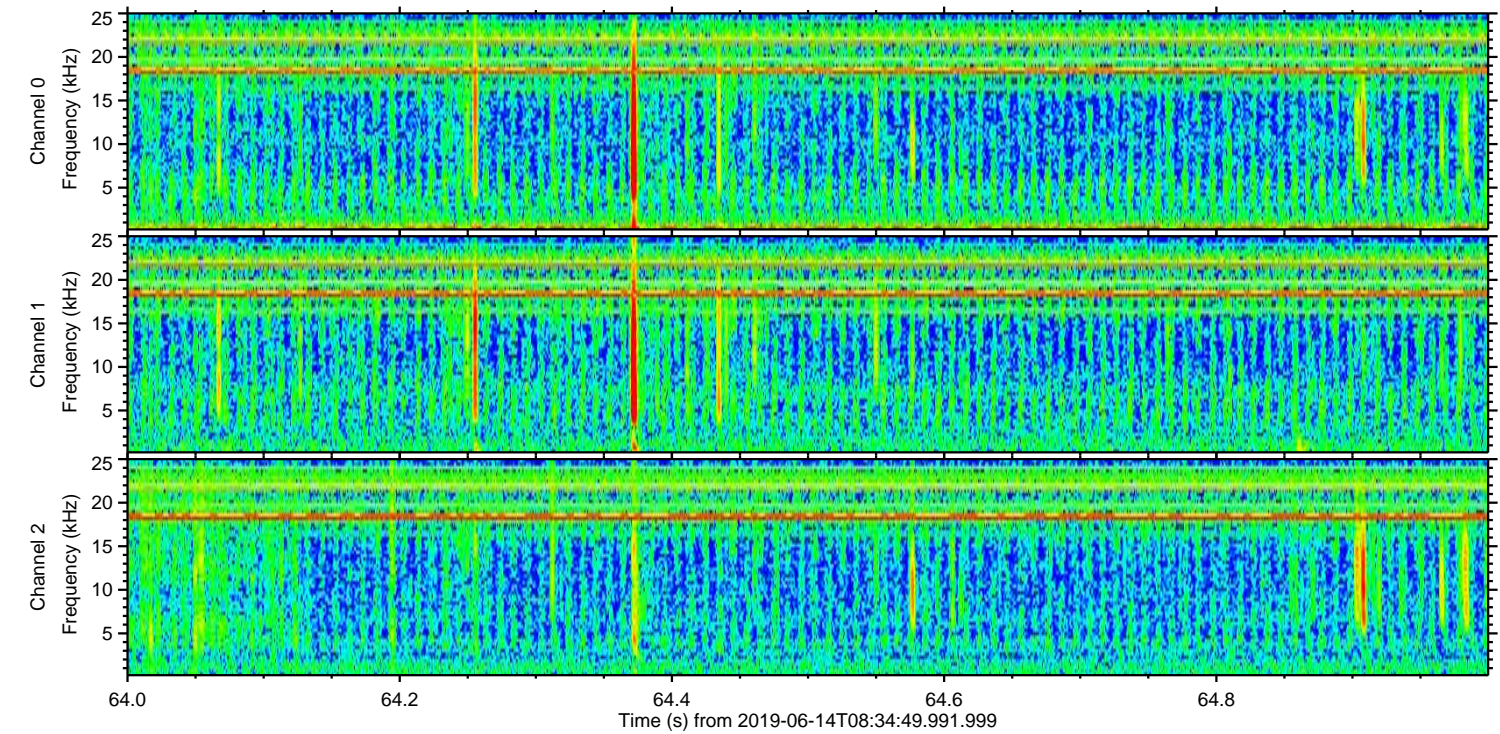
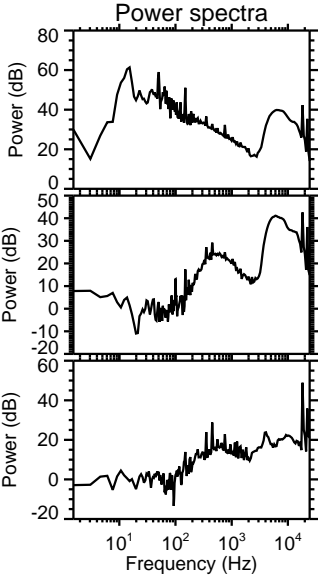
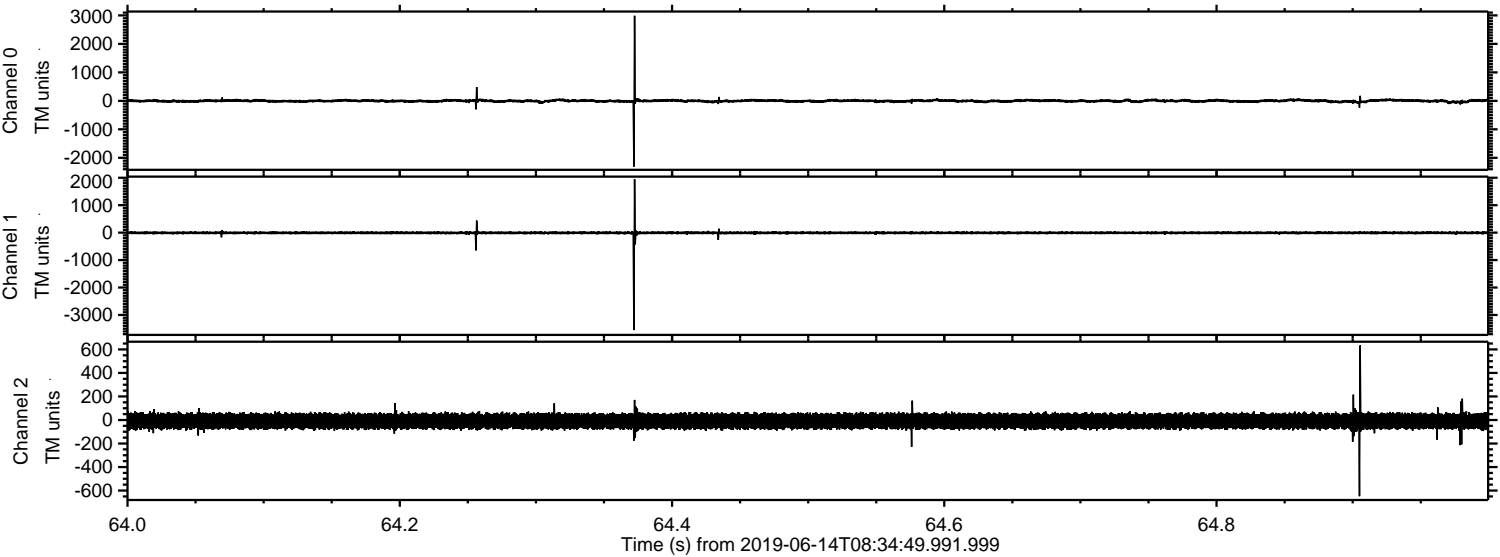


ELMAVAN 3D WAVEFORMS (Measured data sampled at 50 kHz) 51000 packets of 144 samples from 2019-06-14T08:34:49.991.999. Part 140/147

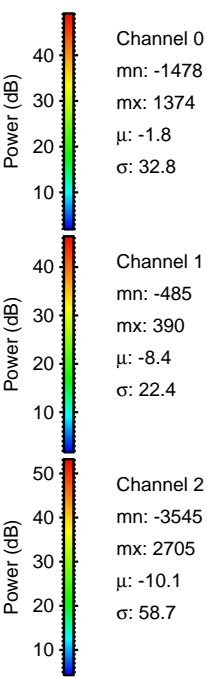
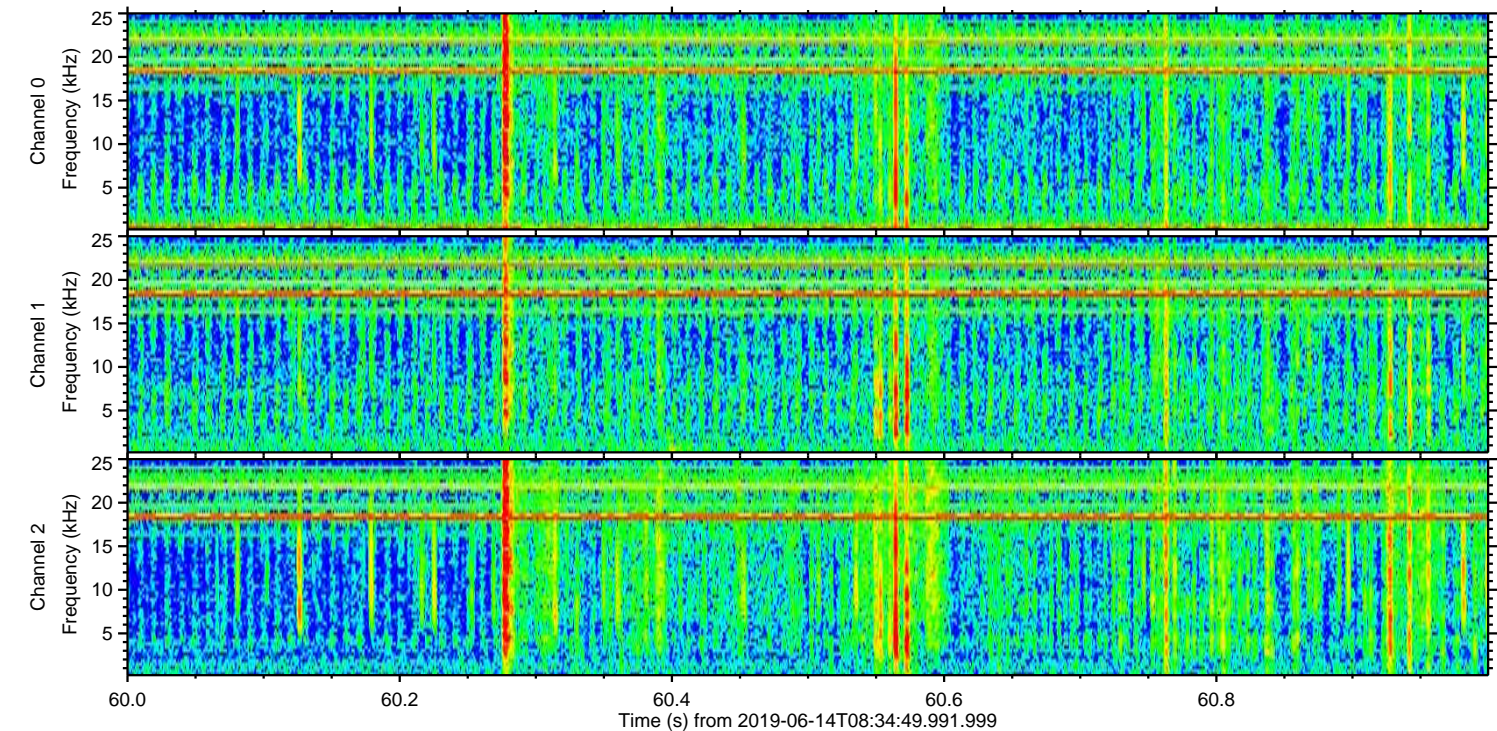
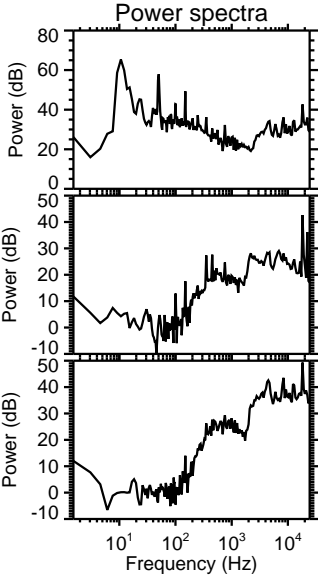
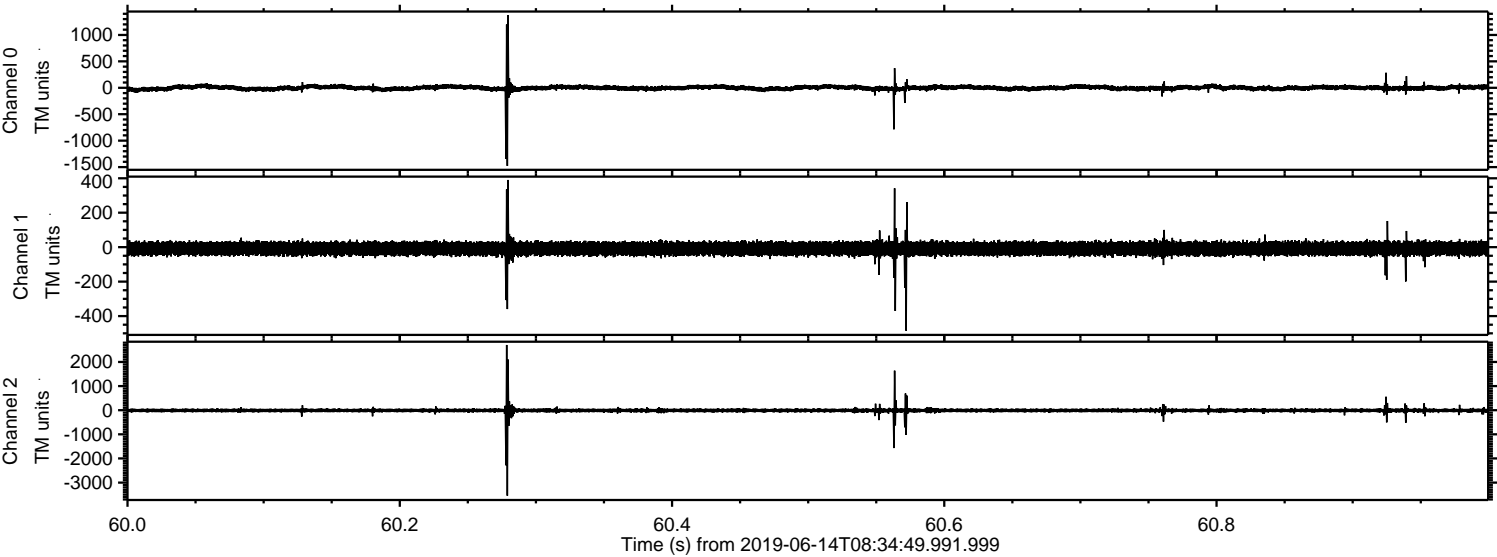
Processed Fri Jun 14 10:42:23 2019 by ELM ver.2012-10-06 from 001__elm20190614_083448__dat00.bin



Processed Fri Jun 14 10:42:24 2019 by ELM ver.2012-10-06 from 001__elm20190614_083448__dat00.bin

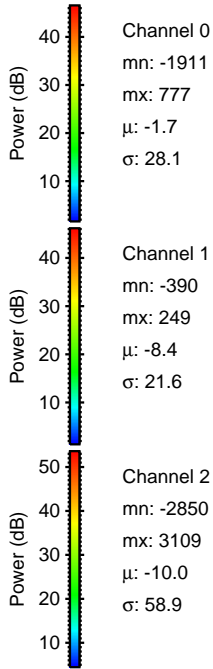
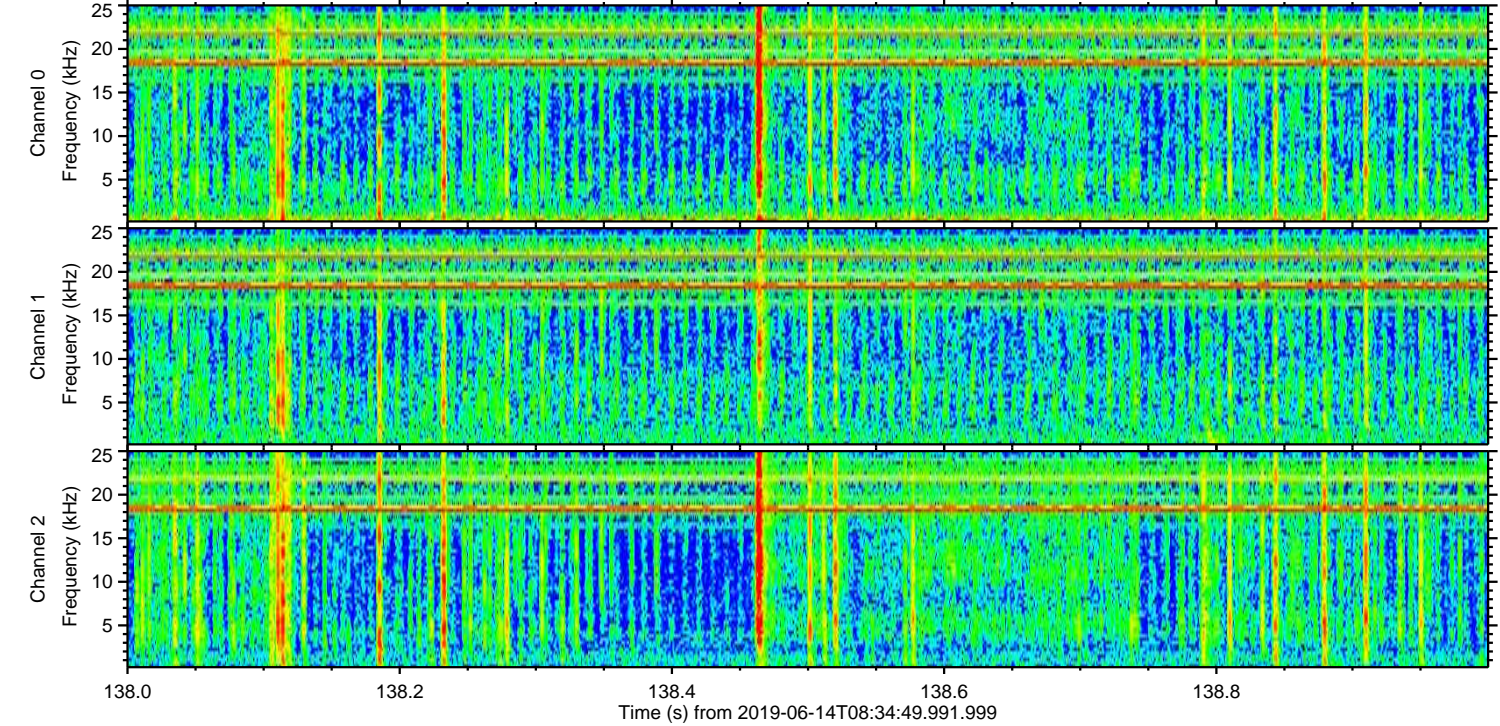
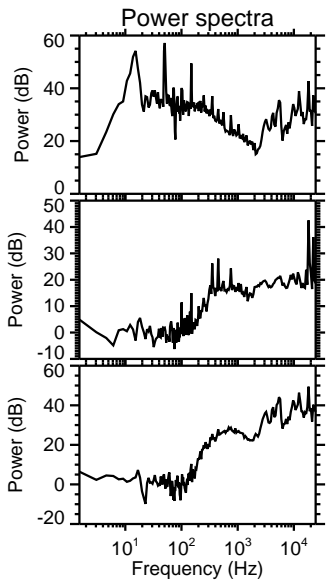
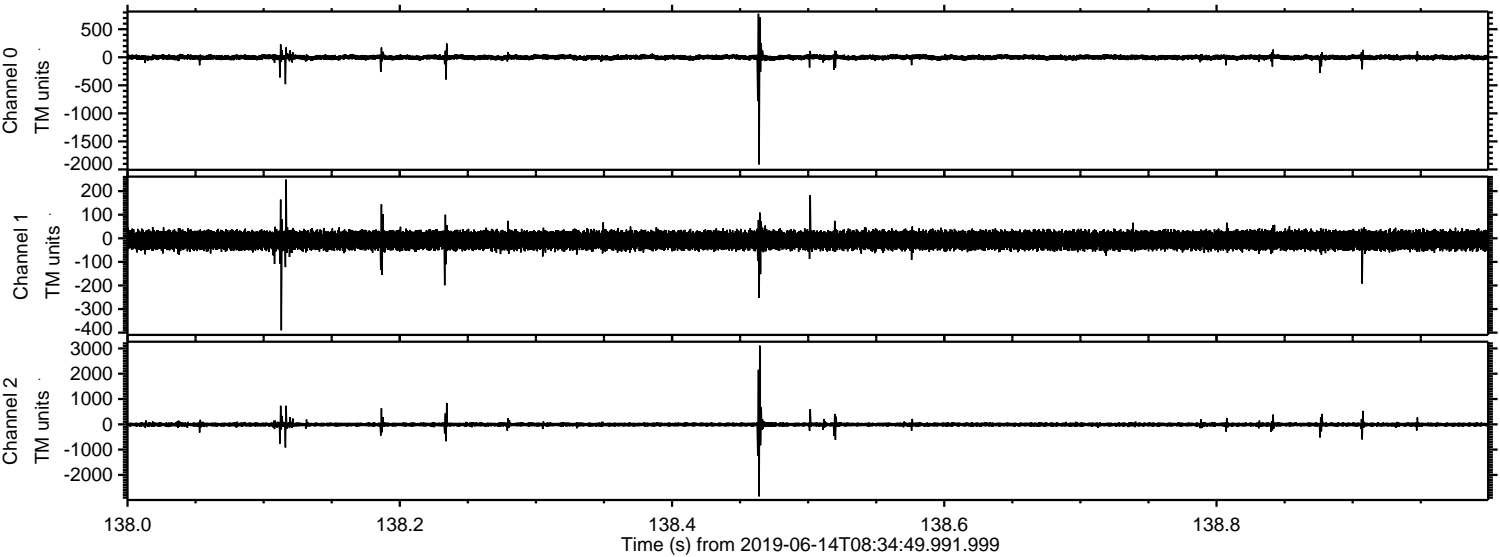


Processed Fri Jun 14 10:42:25 2019 by ELM ver.2012-10-06 from 001__elm20190614_083448__dat00.bin



ELMAVAN 3D WAVEFORMS (Measured data sampled at 50 kHz) 51000 packets of 144 samples from 2019-06-14T08:34:49.991.999. Part 139/147

Processed Fri Jun 14 10:42:25 2019 by ELM ver.2012-10-06 from 001__elm20190614_083448__dat00.bin

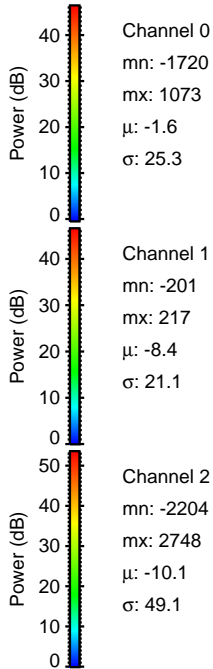
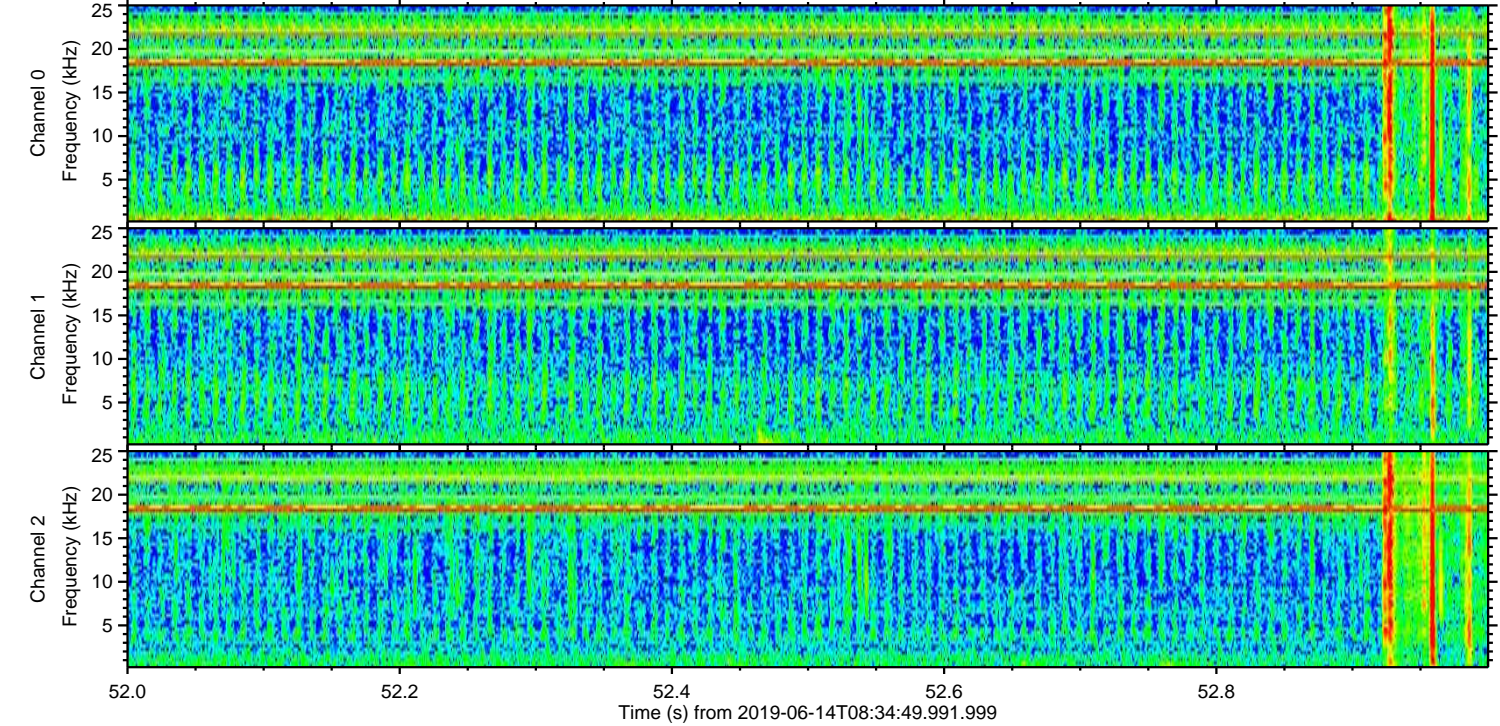
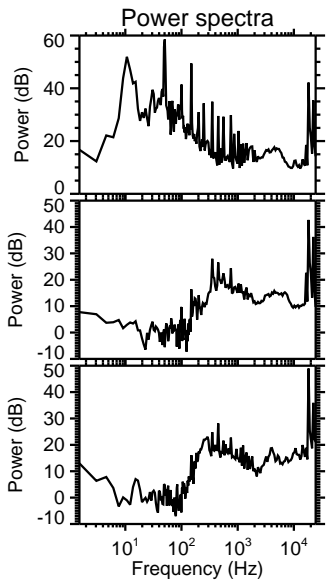
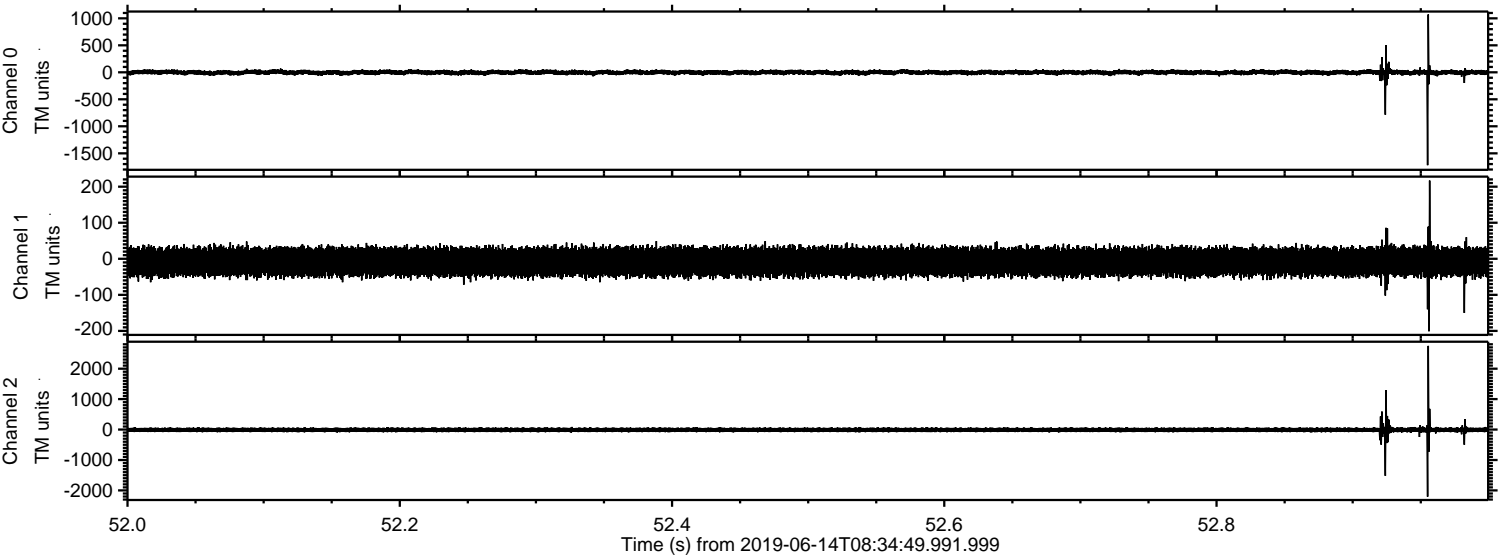


Channel 0
mn: -1911
mx: 777
 μ : -1.7
 σ : 28.1

Channel 1
mn: -390
mx: 249
 μ : -8.4
 σ : 21.6

Channel 2
mn: -2850
mx: 3109
 μ : -10.0
 σ : 58.9

Processed Fri Jun 14 10:42:26 2019 by ELM ver.2012-10-06 from 001__elm20190614_083448__dat00.bin



Channel 0
mn: -1720
mx: 1073
 μ : -1.6
 σ : 25.3

Channel 1
mn: -201
mx: 217
 μ : -8.4
 σ : 21.1

Channel 2
mn: -2204
mx: 2748
 μ : -10.1
 σ : 49.1

