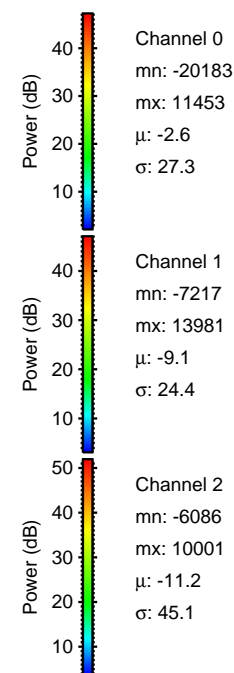
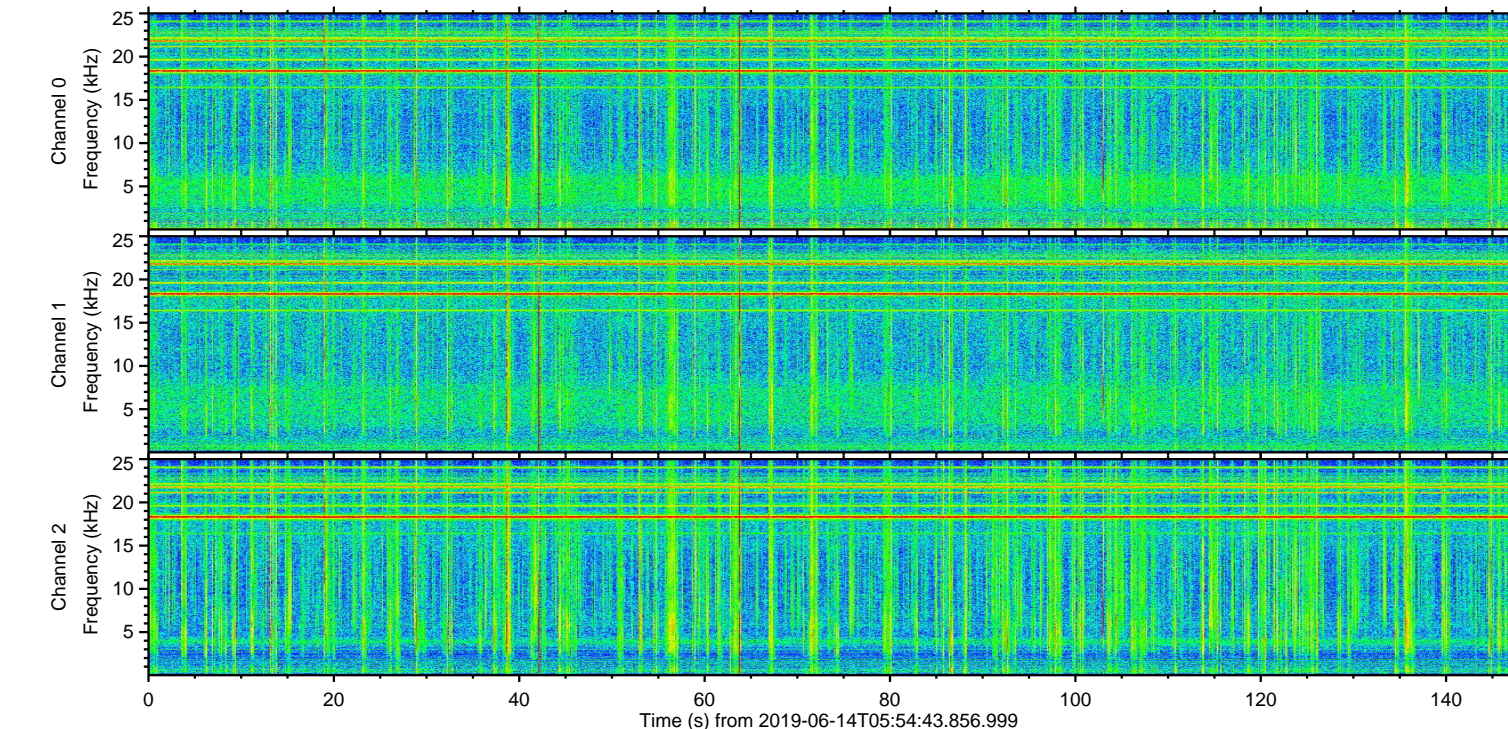
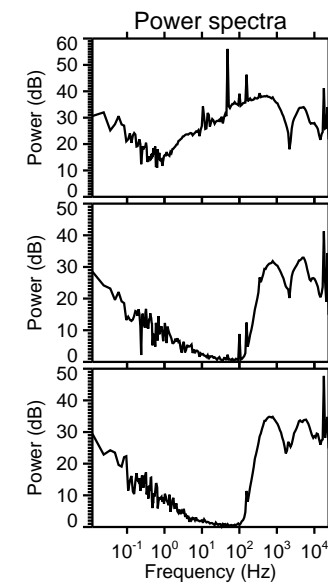
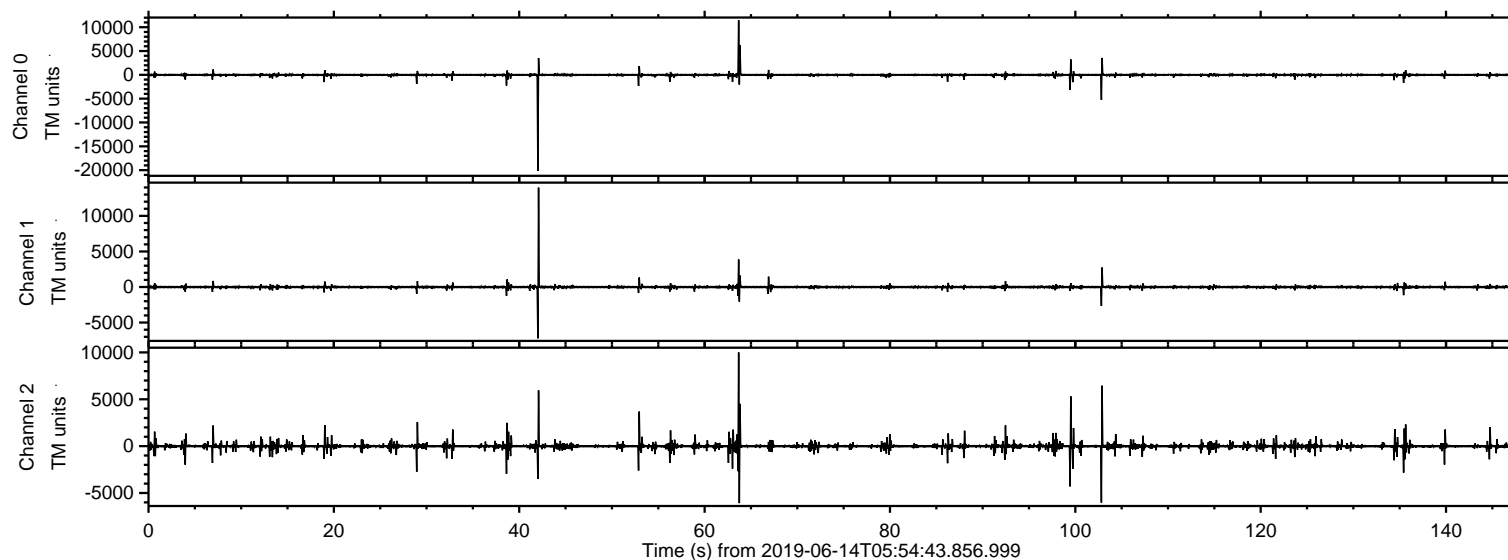
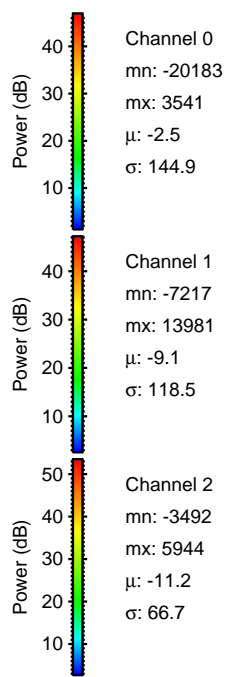
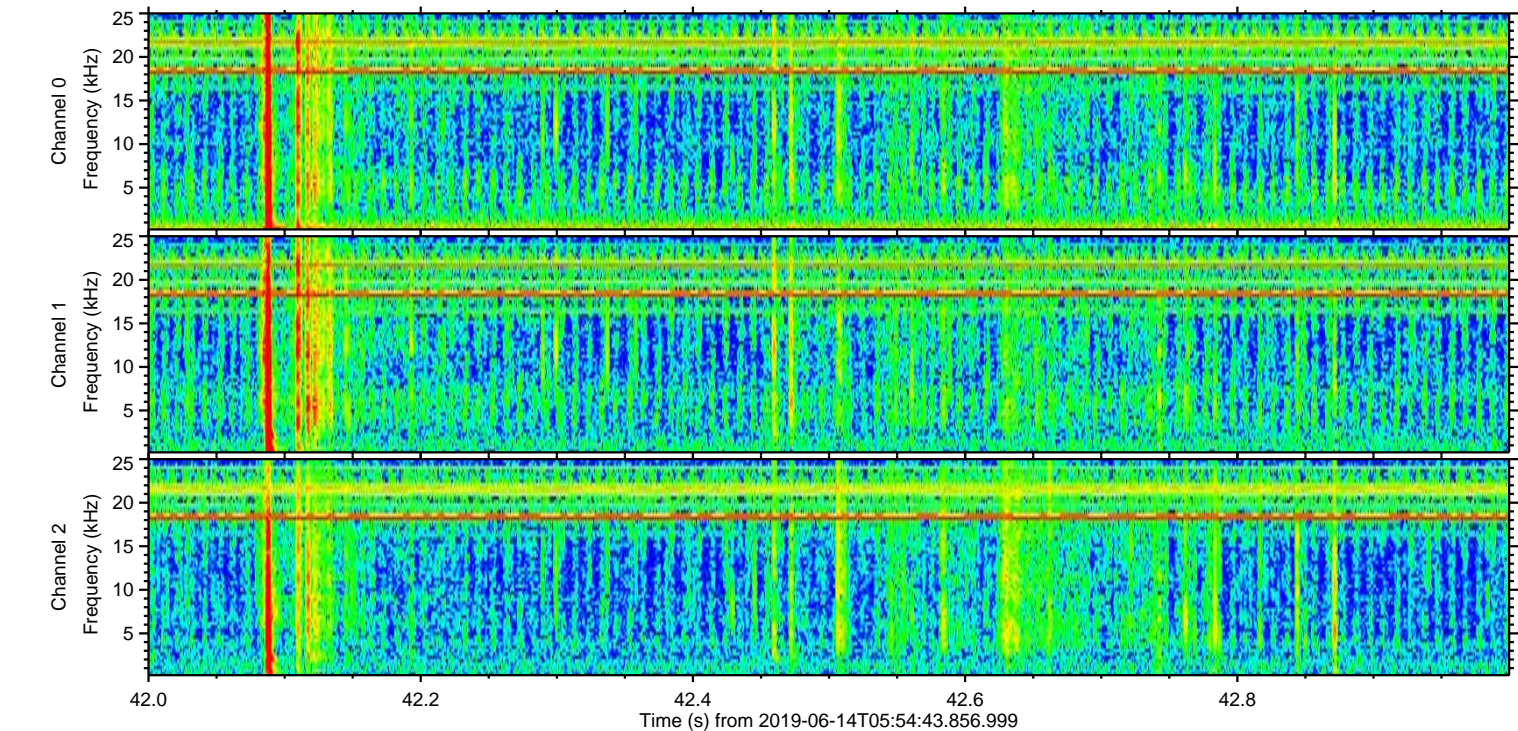
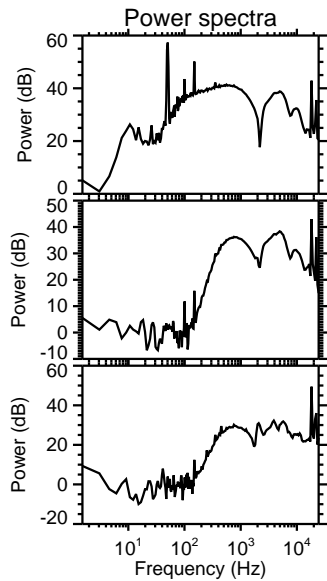
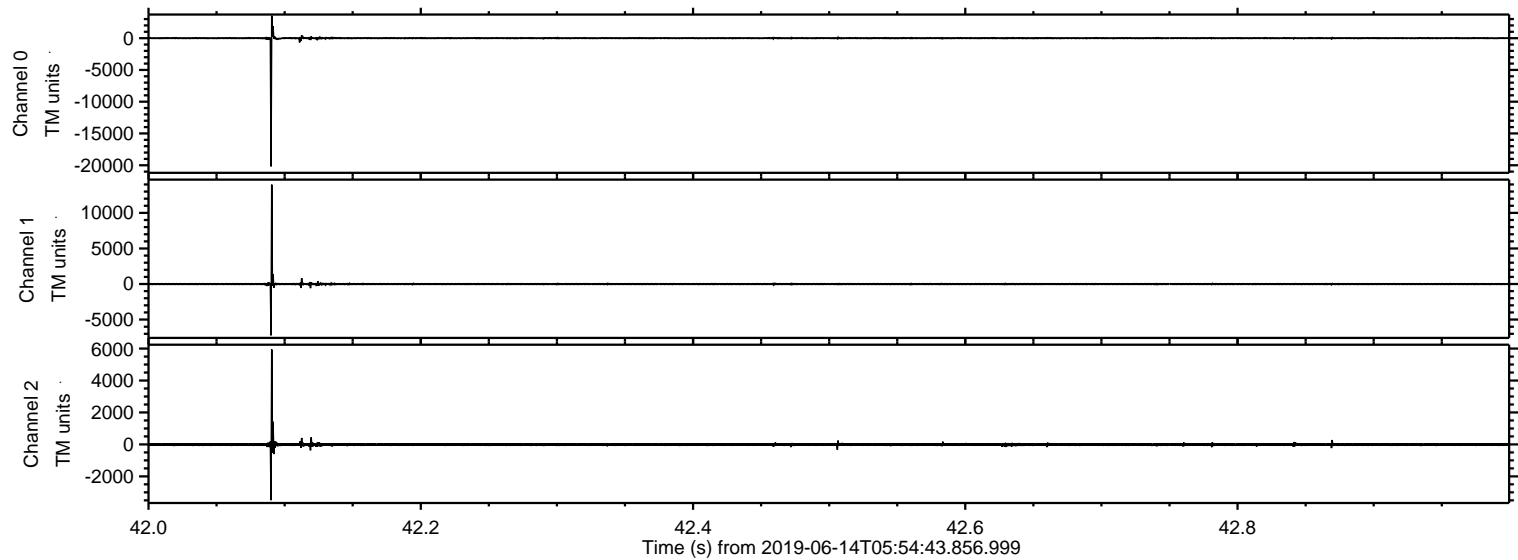


ELMAVAN 3D WAVEFORMS (Measured data sampled at 50 kHz) 51000 packets of 144 samples from 2019-06-14T05:54:43.856.999.

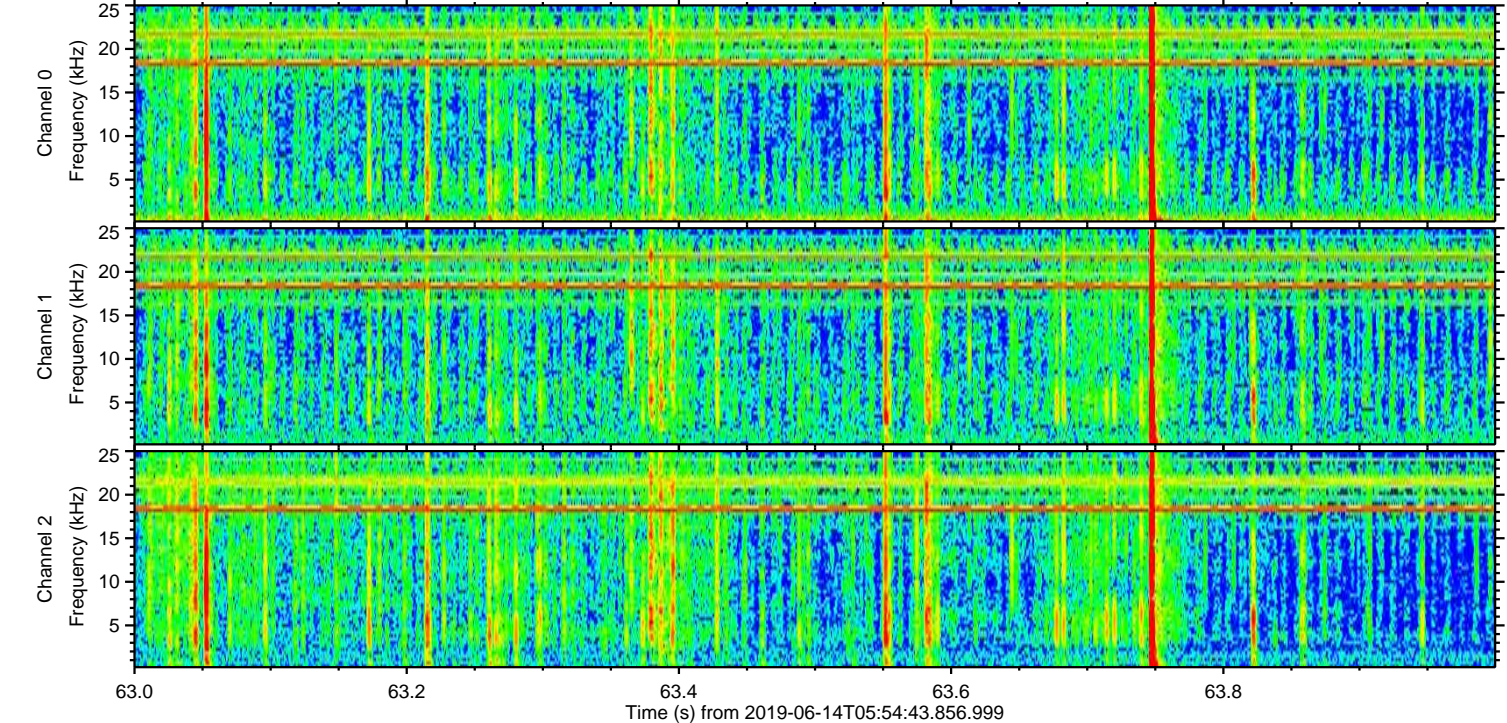
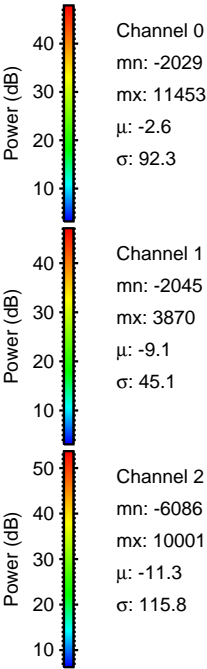
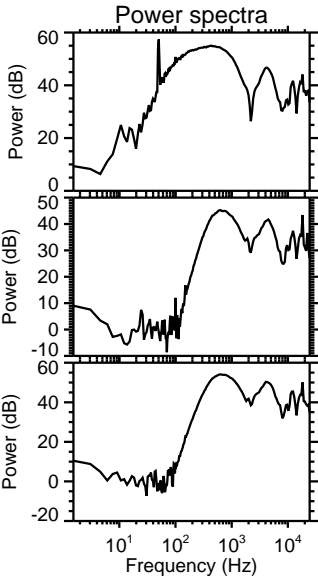
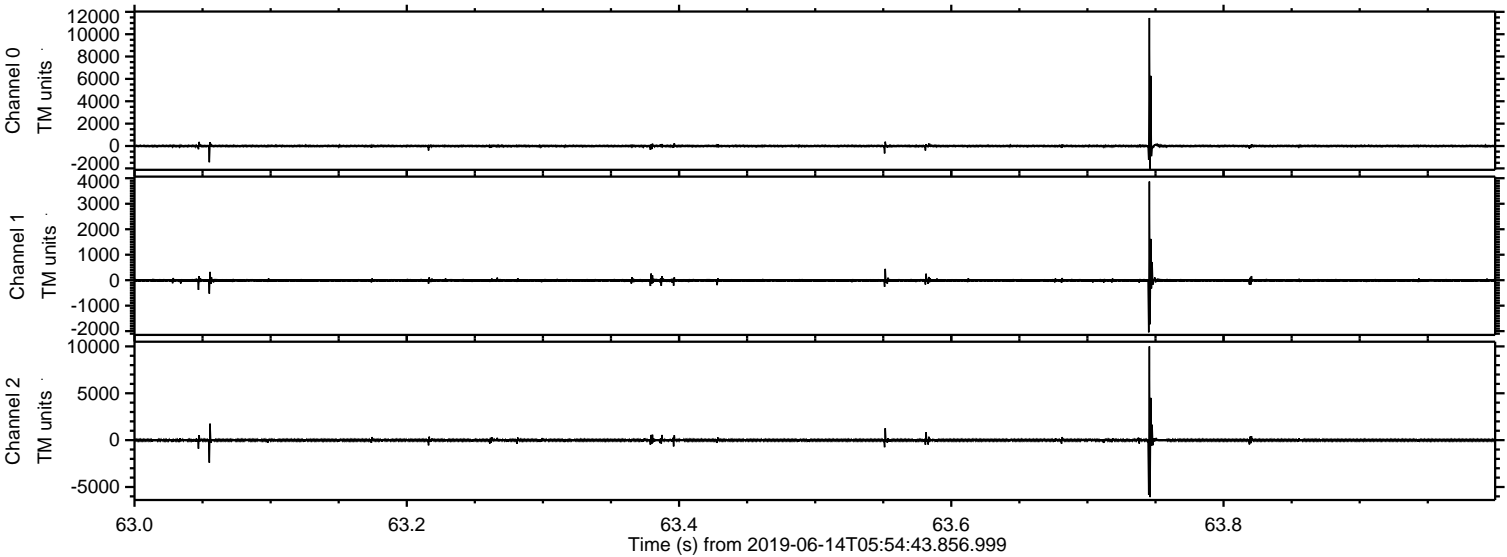
Processed Fri Jun 14 08:02:32 2019 by ELM ver.2012-10-06 from 001__elm20190614_055442__dat00.bin



Processed Fri Jun 14 08:02:42 2019 by ELM ver.2012-10-06 from 001__elm20190614_055442__dat00.bin

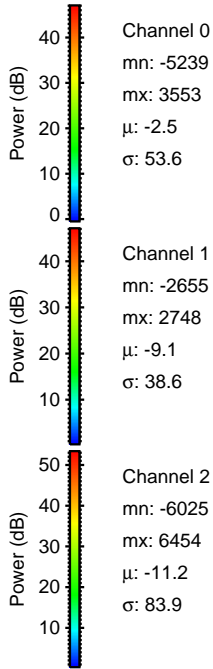
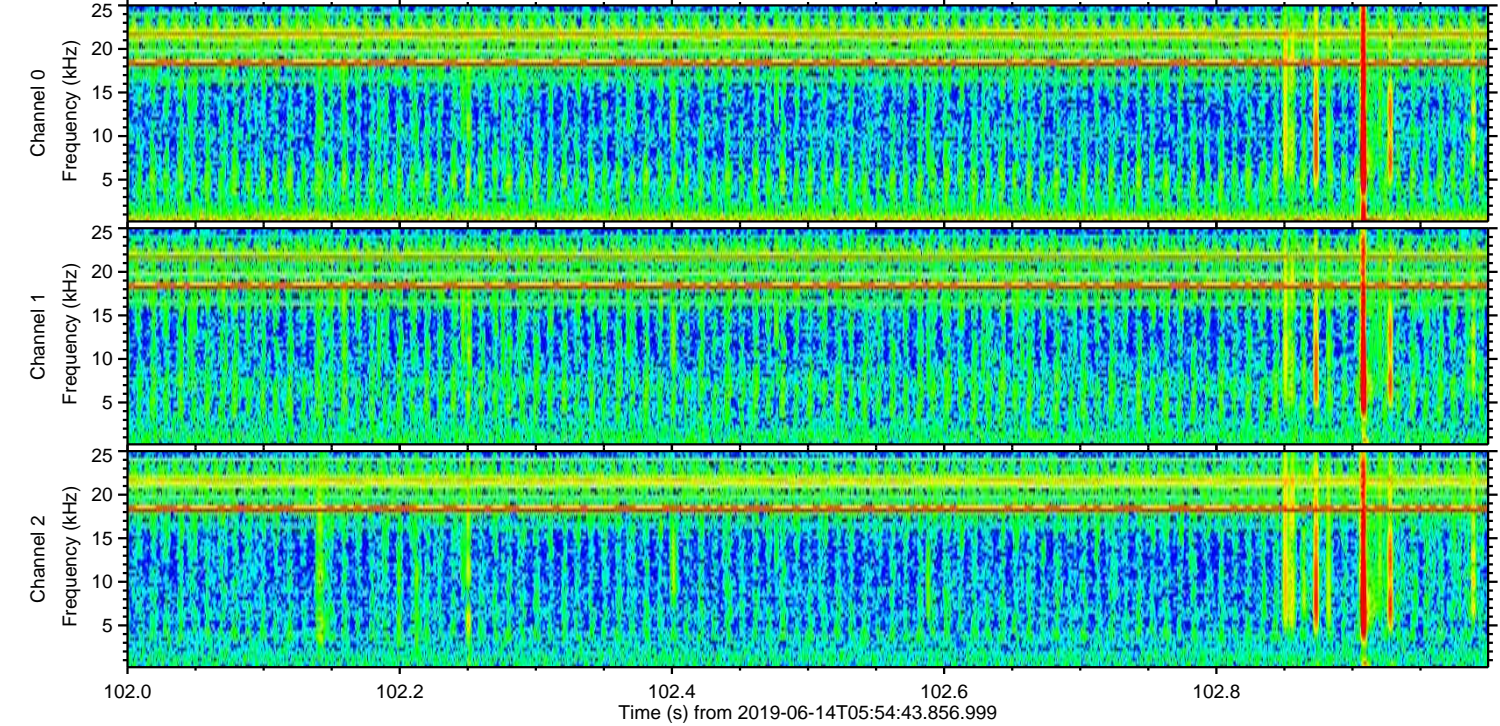
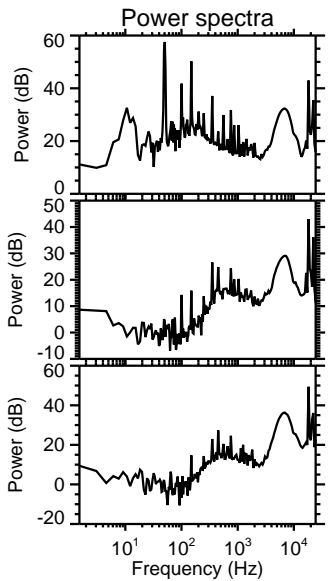
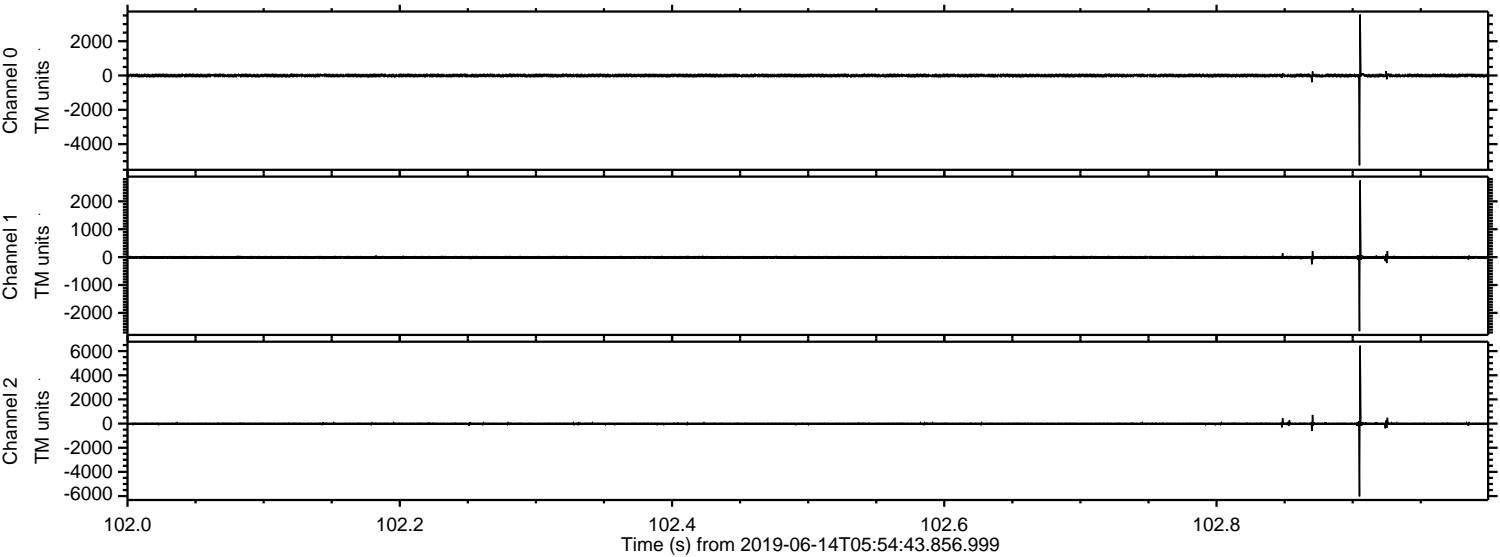


Processed Fri Jun 14 08:02:43 2019 by ELM ver.2012-10-06 from 001__elm20190614_055442__dat00.bin



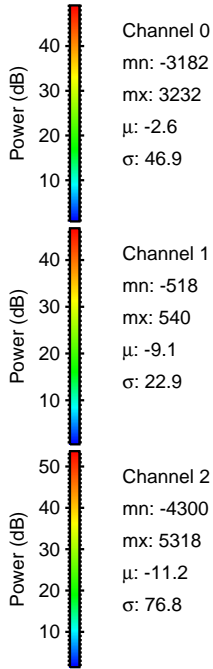
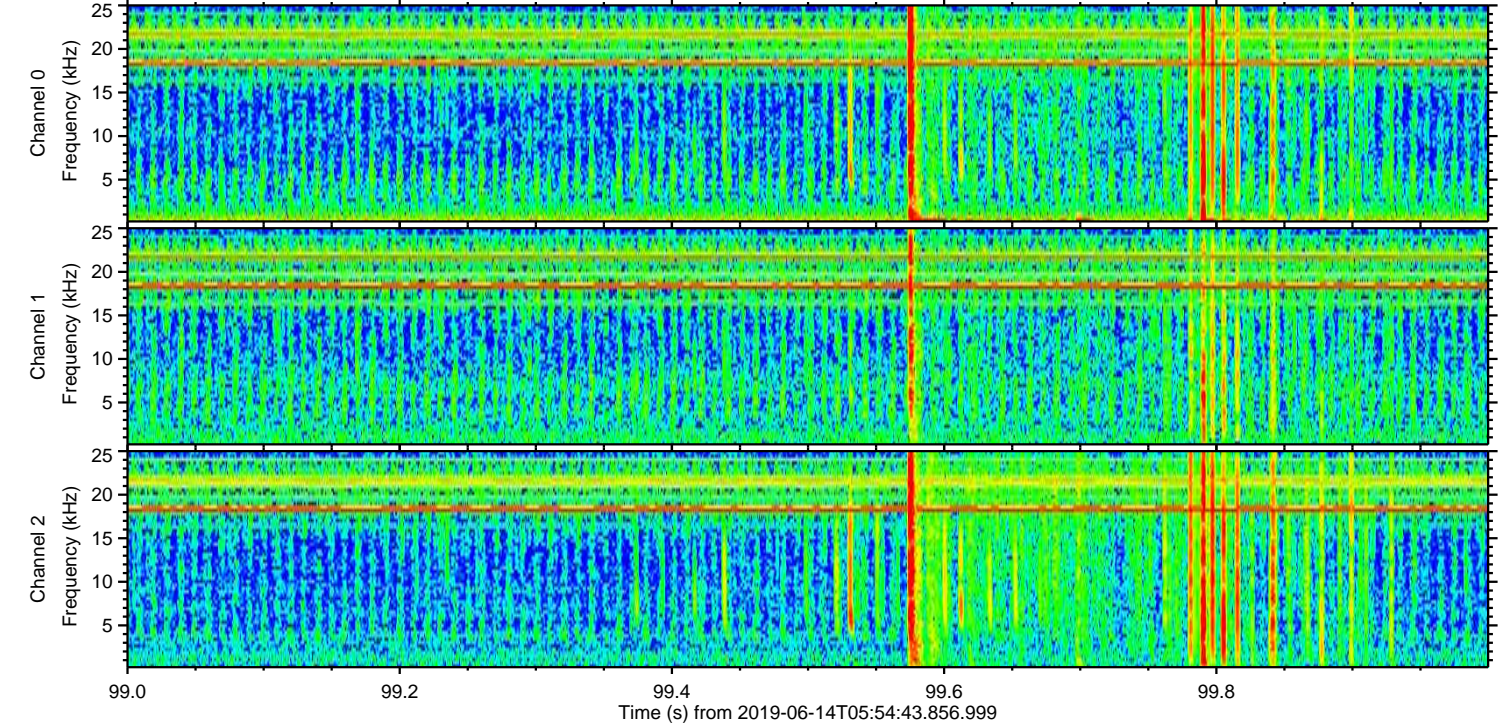
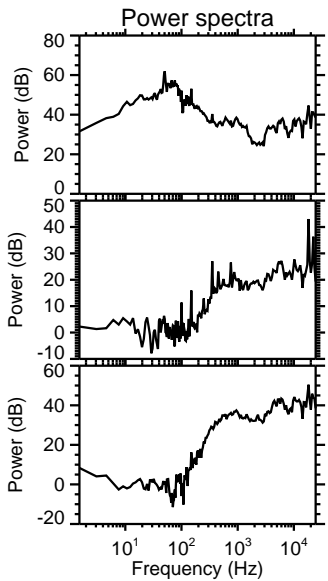
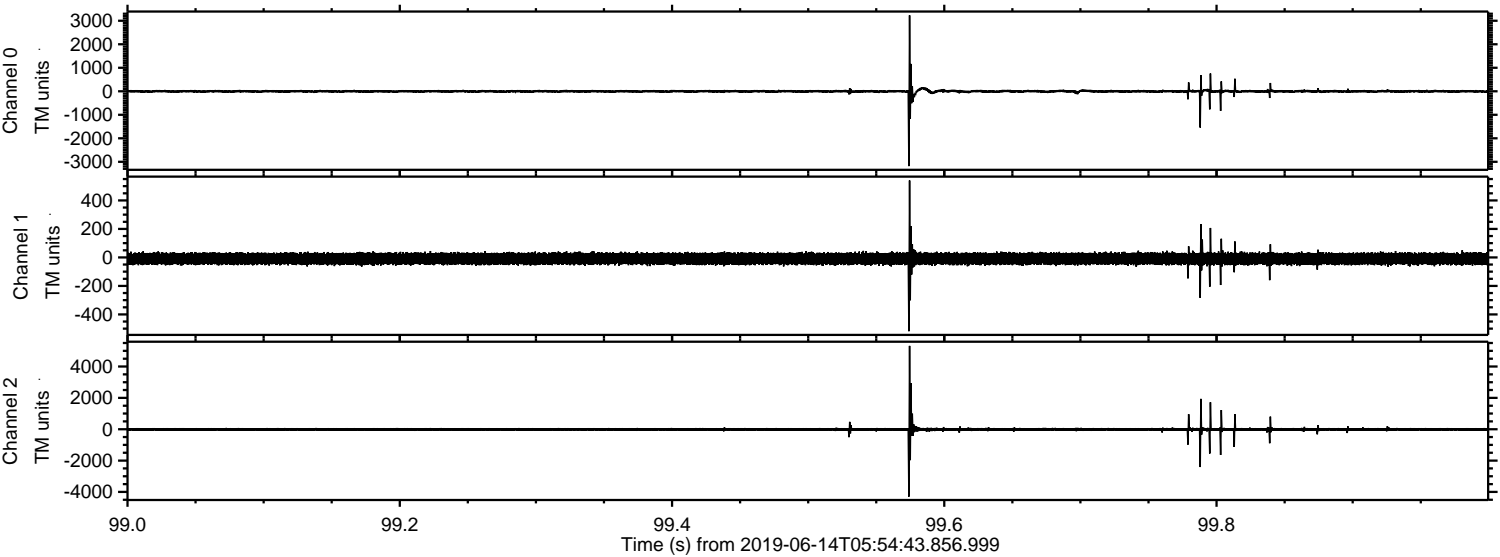
ELMAVAN 3D WAVEFORMS (Measured data sampled at 50 kHz) 51000 packets of 144 samples from 2019-06-14T05:54:43.856.999. Part 103/147

Processed Fri Jun 14 08:02:44 2019 by ELM ver.2012-10-06 from 001__elm20190614_055442__dat00.bin

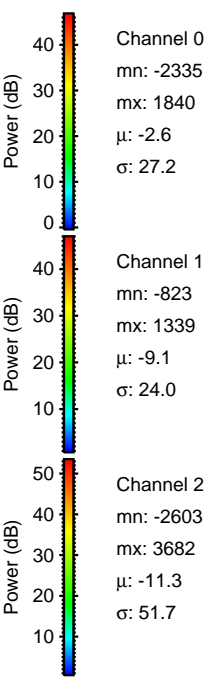
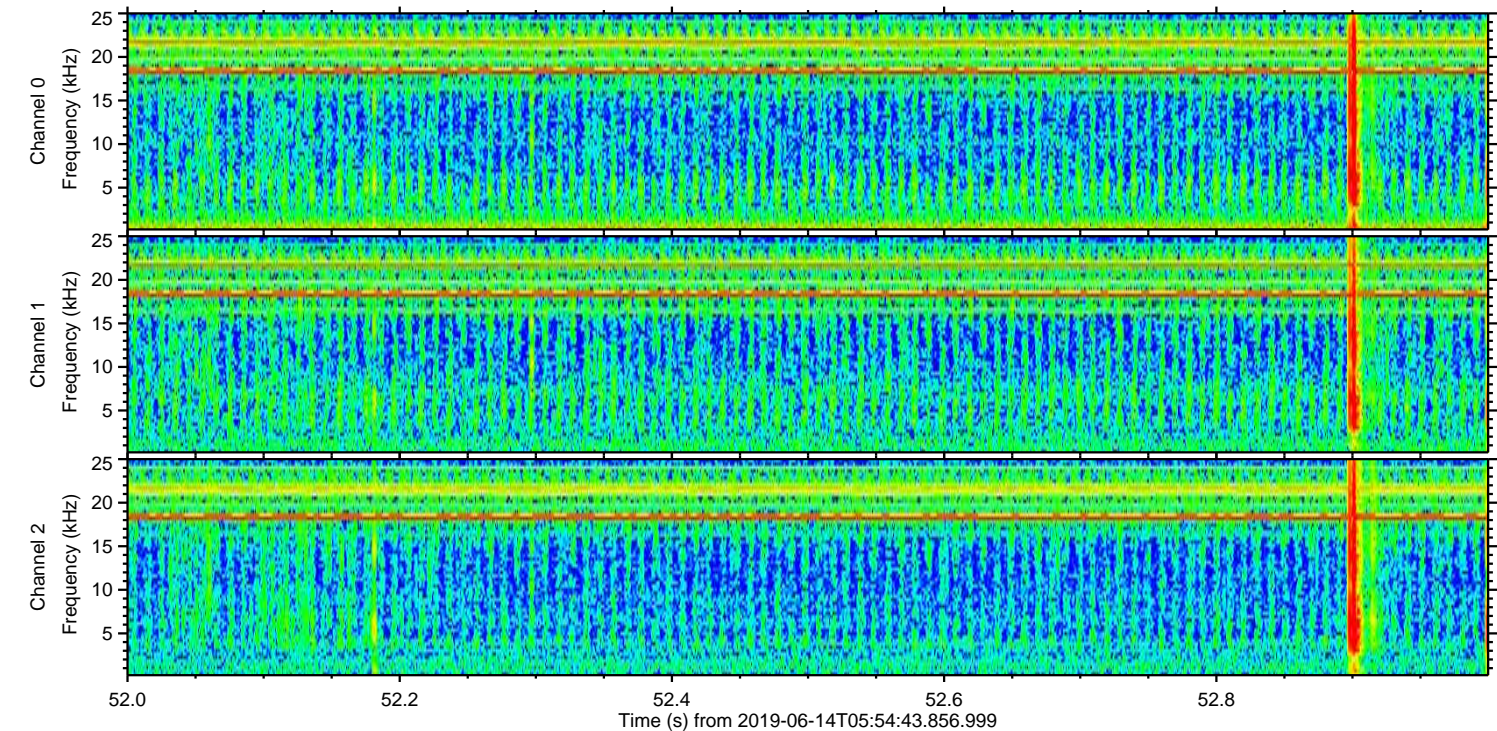
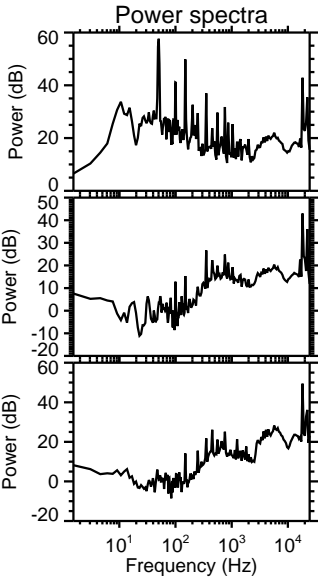
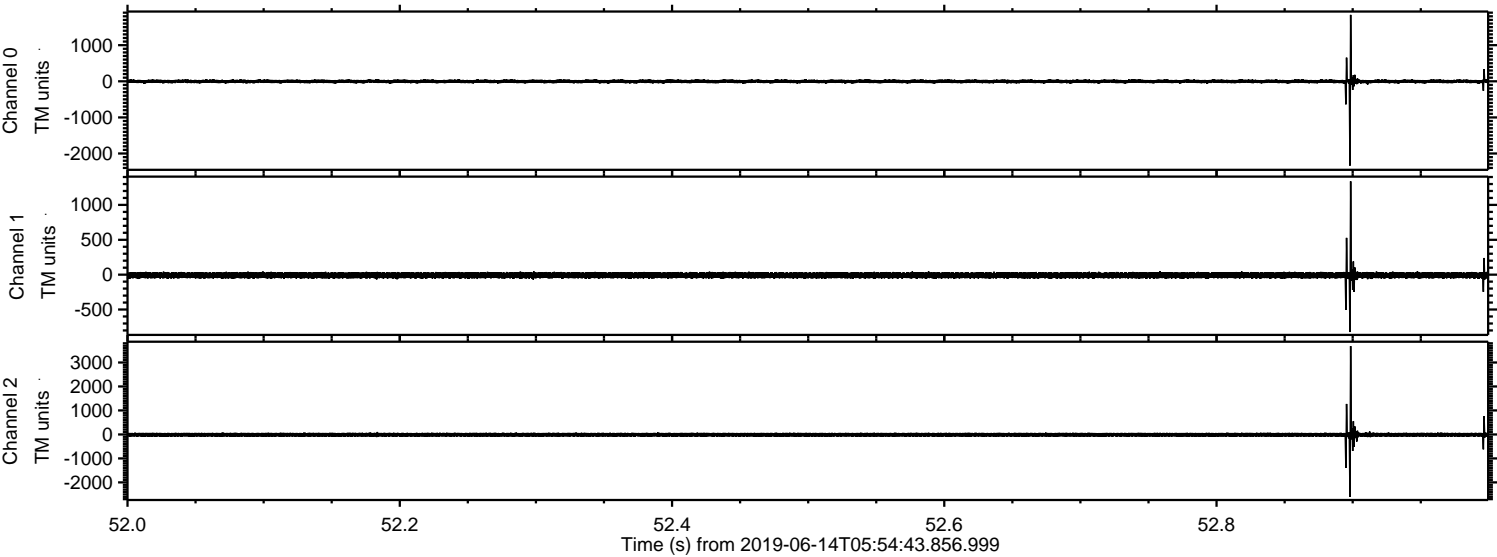


ELMAVAN 3D WAVEFORMS (Measured data sampled at 50 kHz) 51000 packets of 144 samples from 2019-06-14T05:54:43.856.999. Part 100/147

Processed Fri Jun 14 08:02:44 2019 by ELM ver.2012-10-06 from 001__elm20190614_055442__dat00.bin

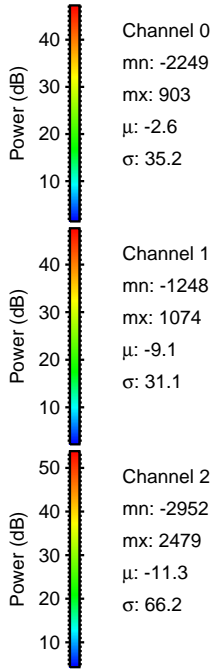
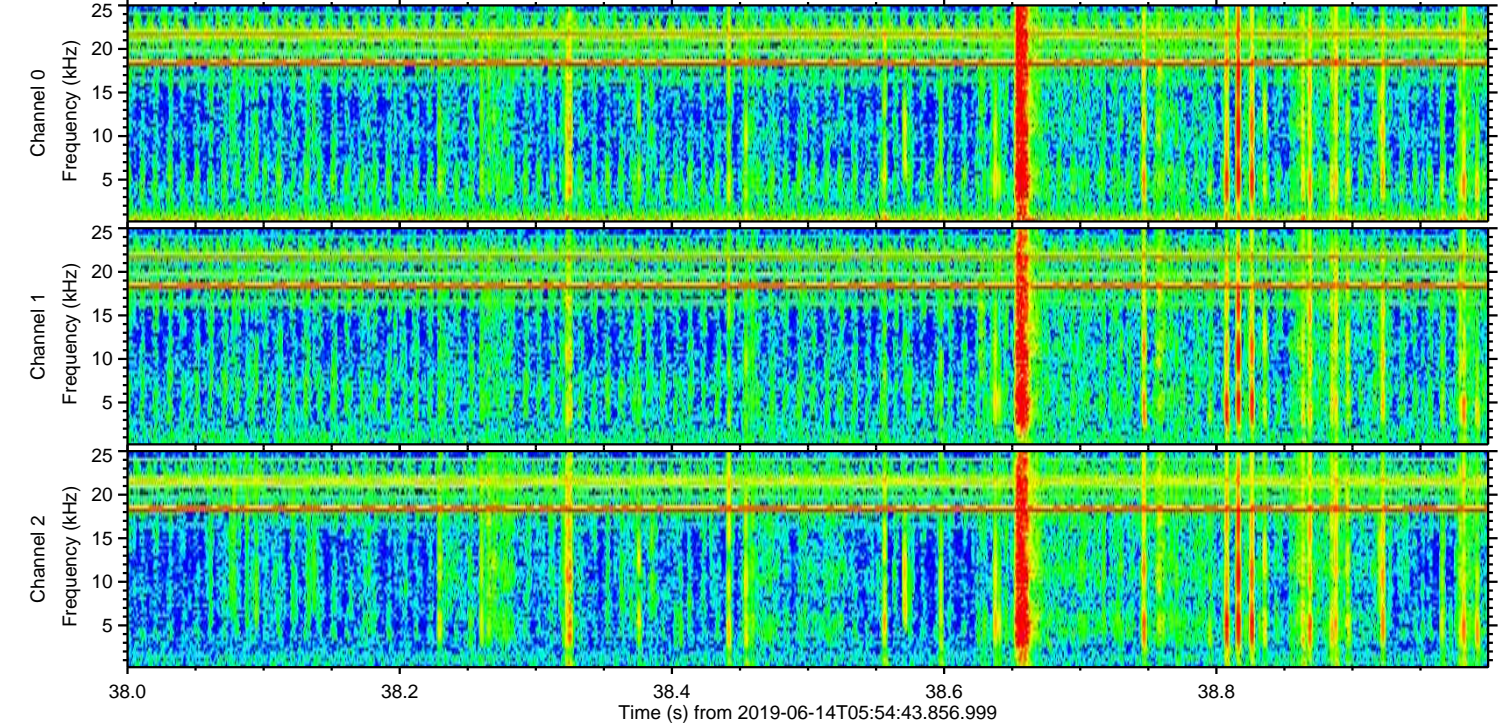
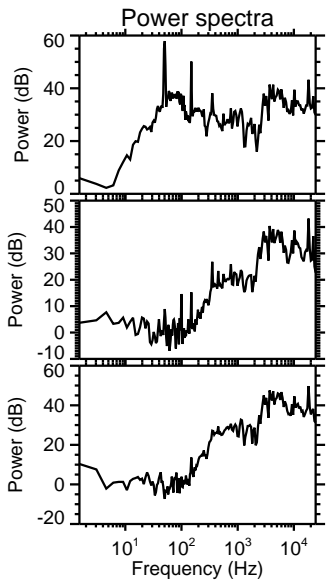
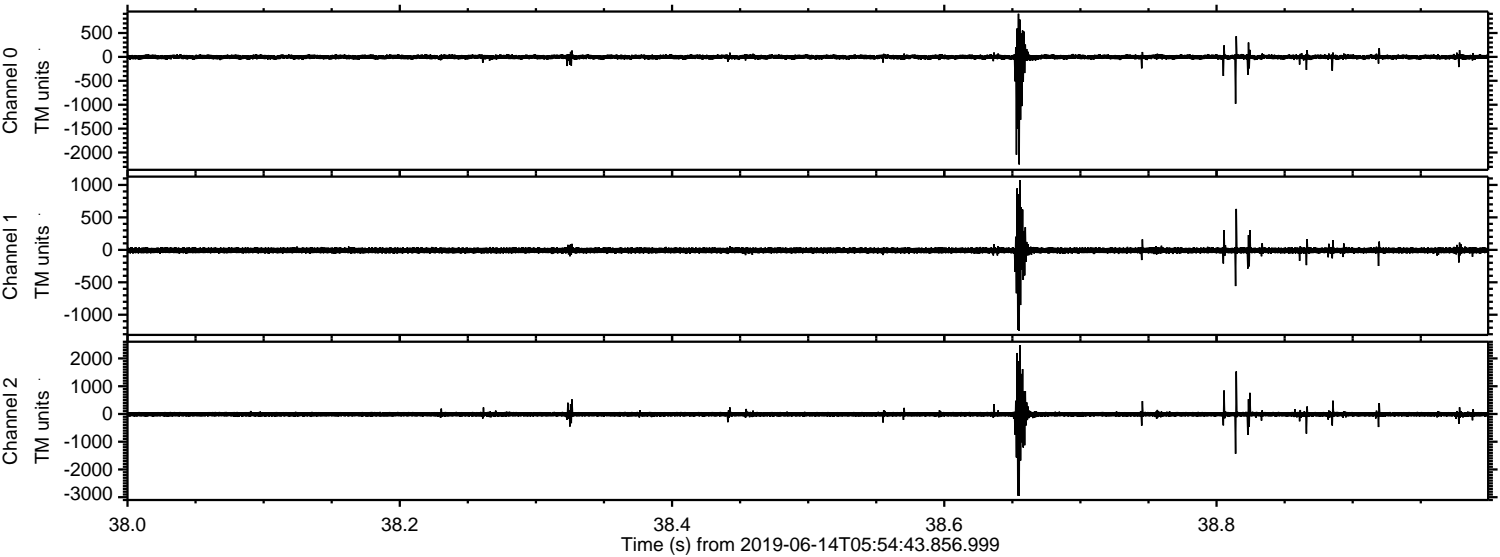


Processed Fri Jun 14 08:02:45 2019 by ELM ver.2012-10-06 from 001__elm20190614_055442__dat00.bin



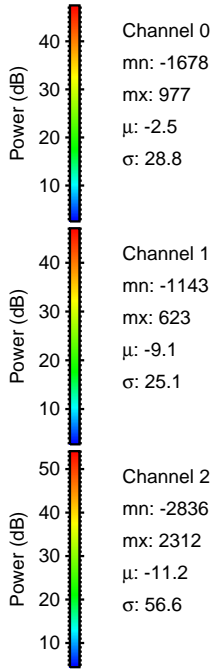
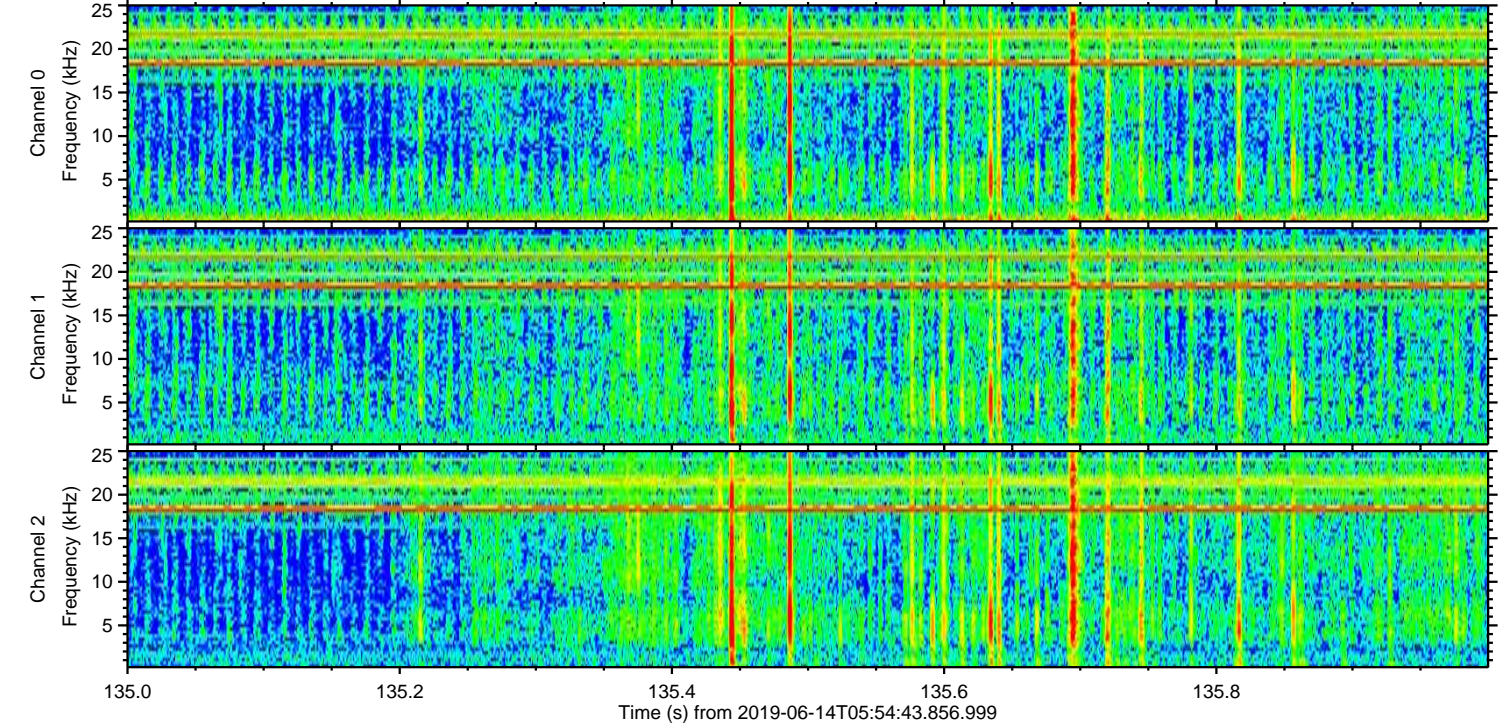
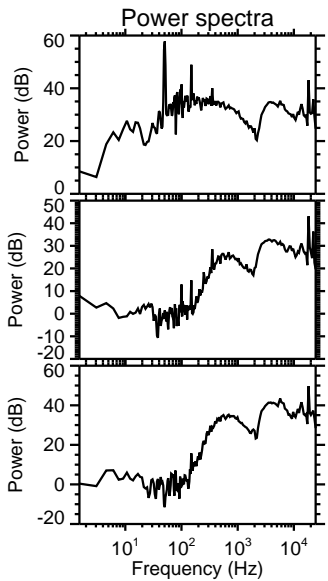
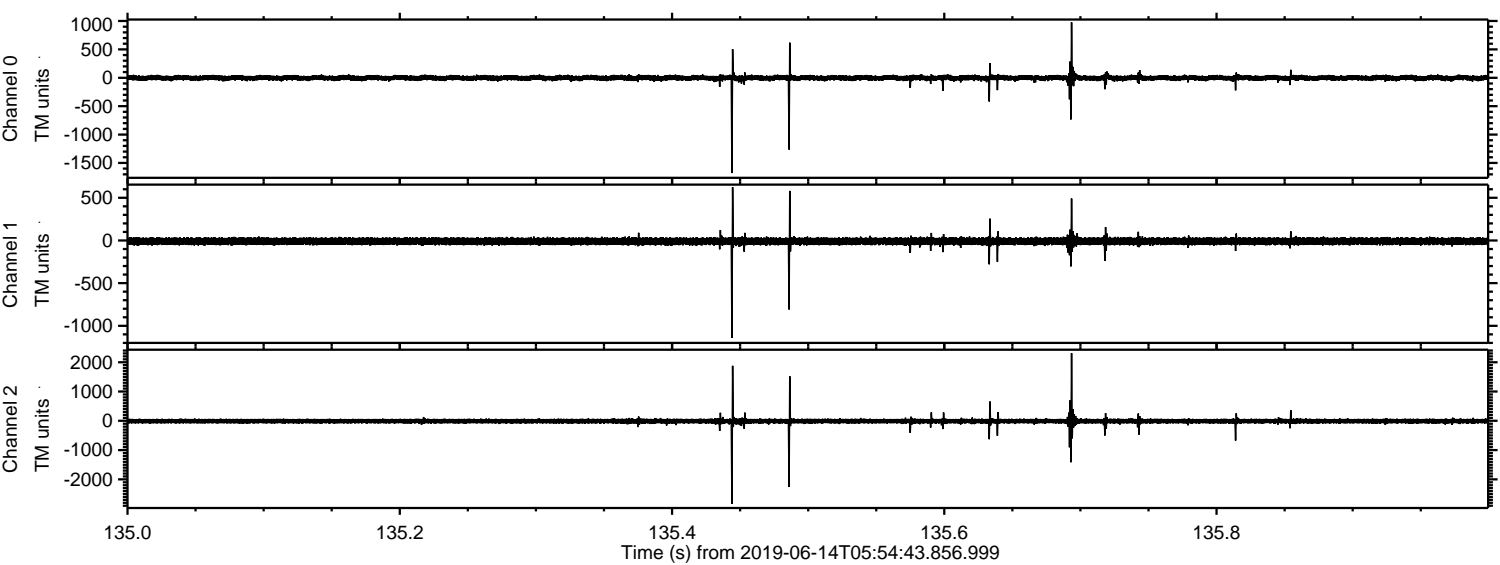
ELMAVAN 3D WAVEFORMS (Measured data sampled at 50 kHz) 51000 packets of 144 samples from 2019-06-14T05:54:43.856.999. Part 39/147

Processed Fri Jun 14 08:02:46 2019 by ELM ver.2012-10-06 from 001__elm20190614_055442__dat00.bin



ELMAVAN 3D WAVEFORMS (Measured data sampled at 50 kHz) 51000 packets of 144 samples from 2019-06-14T05:54:43.856.999. Part 136/147

Processed Fri Jun 14 08:02:47 2019 by ELM ver.2012-10-06 from 001__elm20190614_055442__dat00.bin

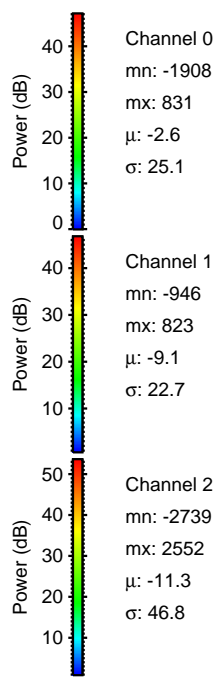
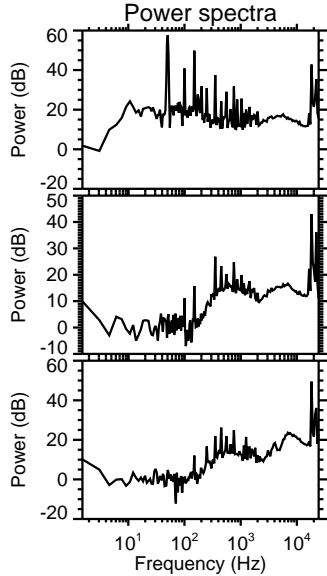
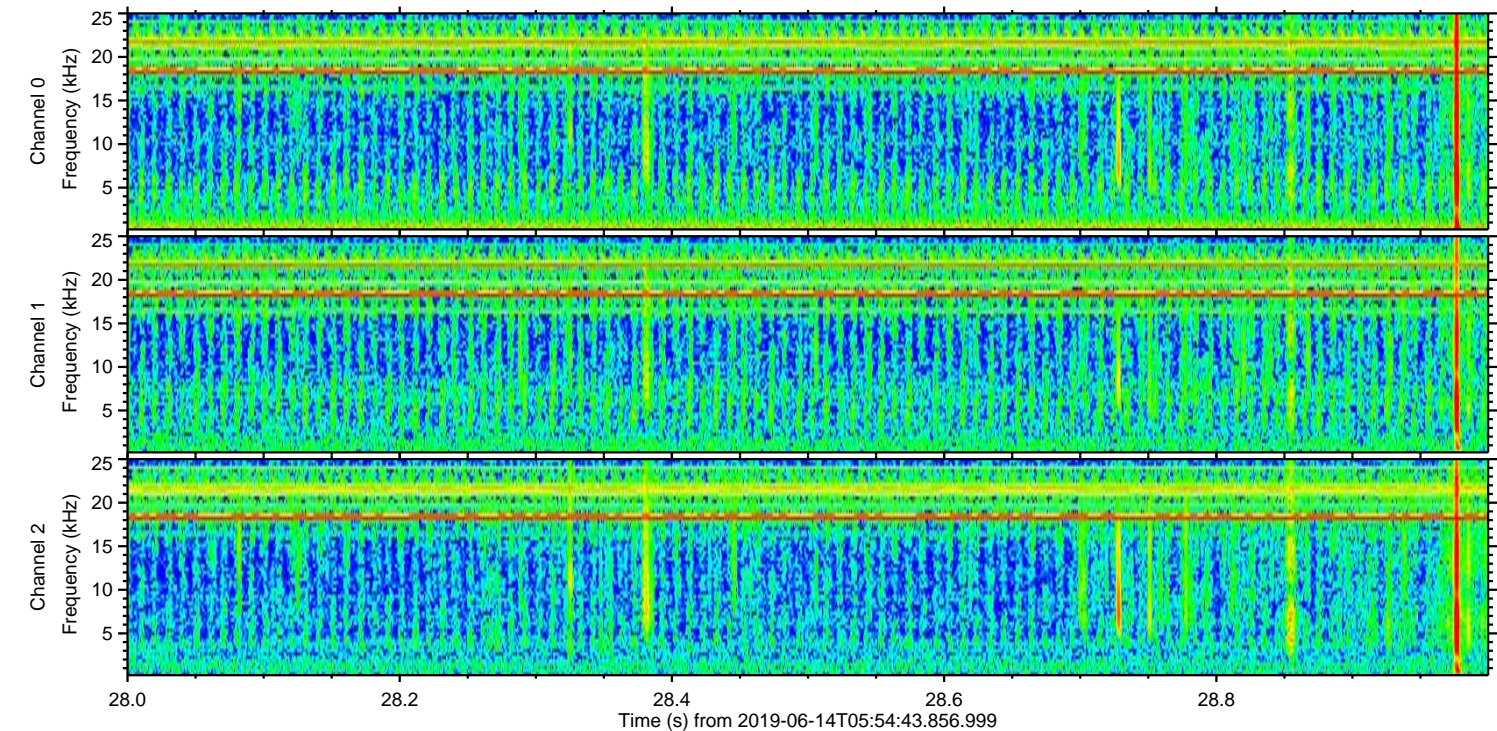
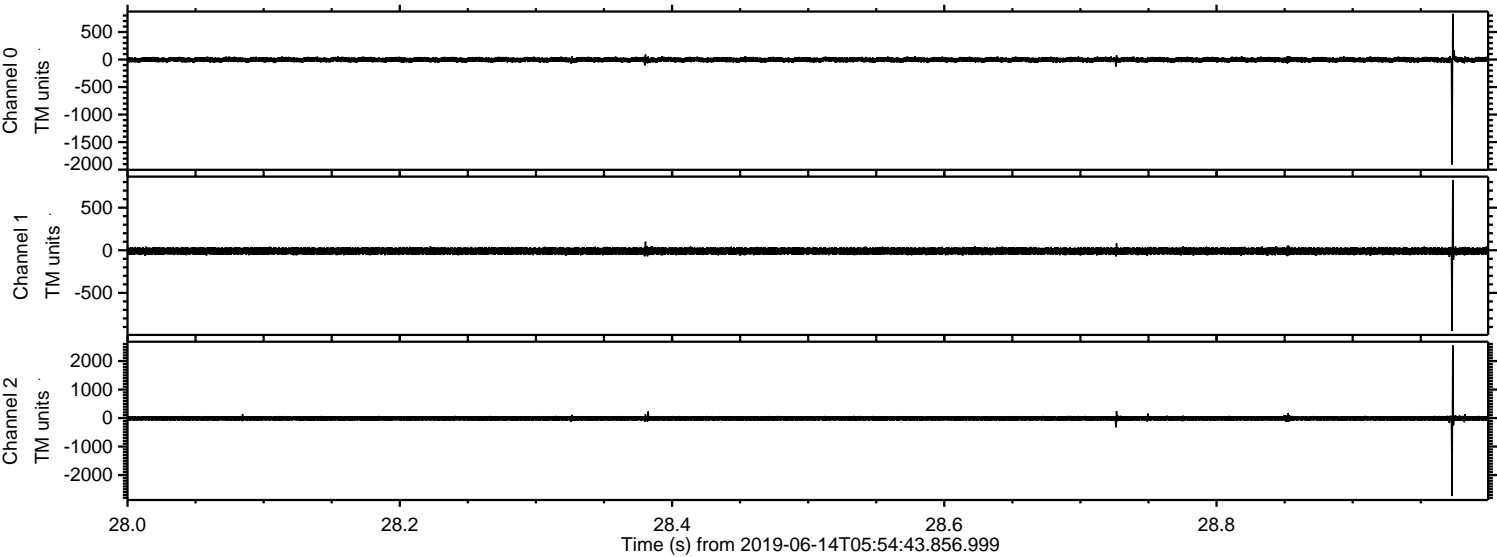


Channel 0
mn: -1678
mx: 977
 μ : -2.5
 σ : 28.8

Channel 1
mn: -1143
mx: 623
 μ : -9.1
 σ : 25.1

Channel 2
mn: -2836
mx: 2312
 μ : -11.2
 σ : 56.6

Processed Fri Jun 14 08:02:48 2019 by ELM ver.2012-10-06 from 001__elm20190614_055442__dat00.bin



Channel 0
mn: -1908
mx: 831
 μ : -2.6
 σ : 25.1

Channel 1
mn: -946
mx: 823
 μ : -9.1
 σ : 22.7

Channel 2
mn: -2739
mx: 2552
 μ : -11.3
 σ : 46.8

Processed Fri Jun 14 08:02:48 2019 by ELM ver.2012-10-06 from 001__elm20190614_055442__dat00.bin

