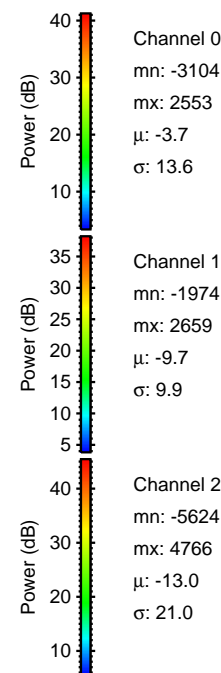
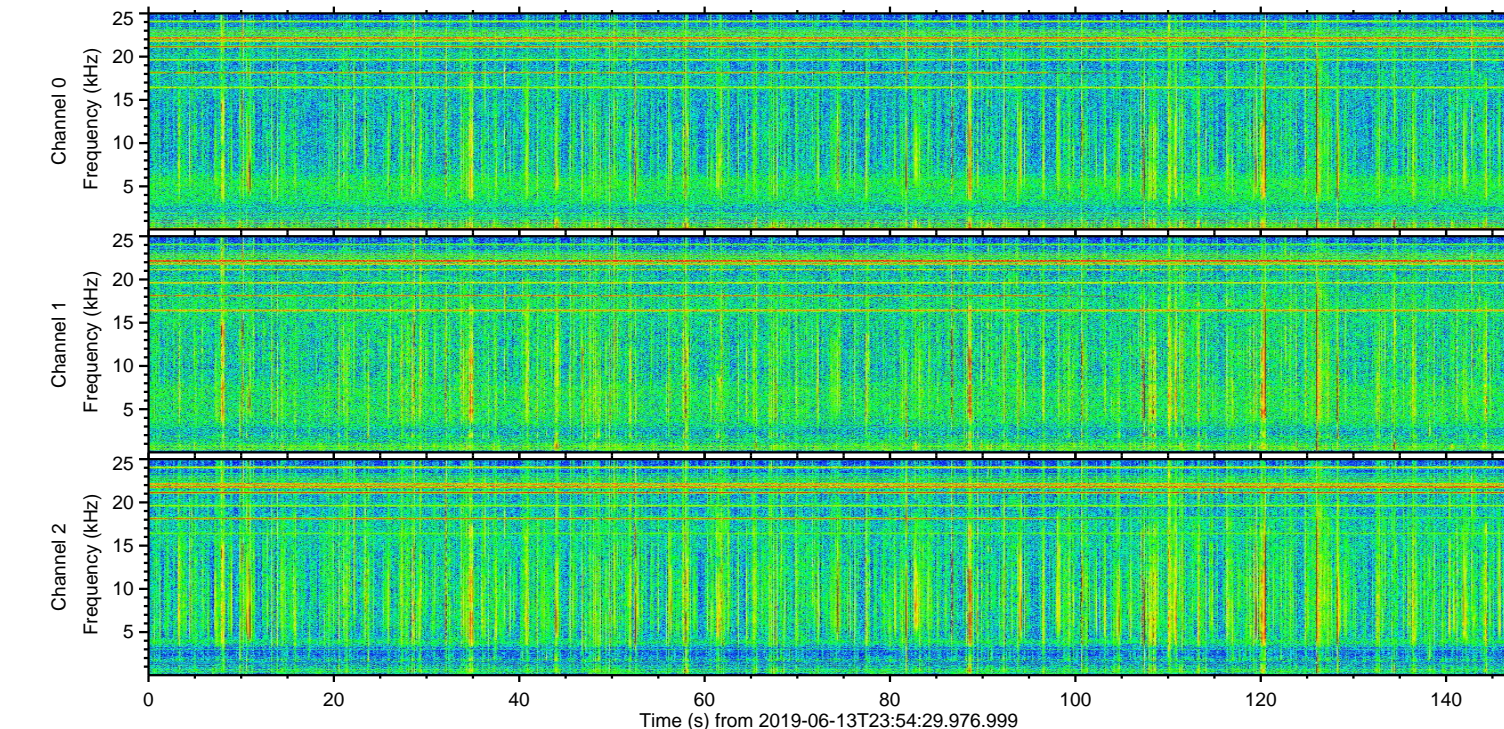
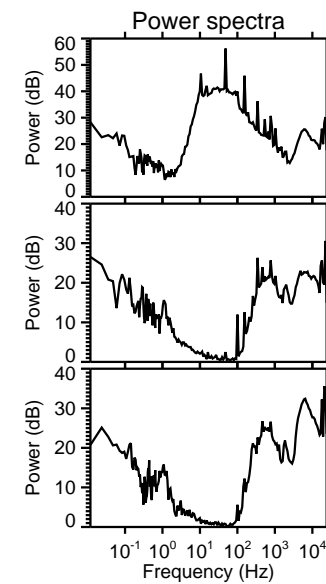
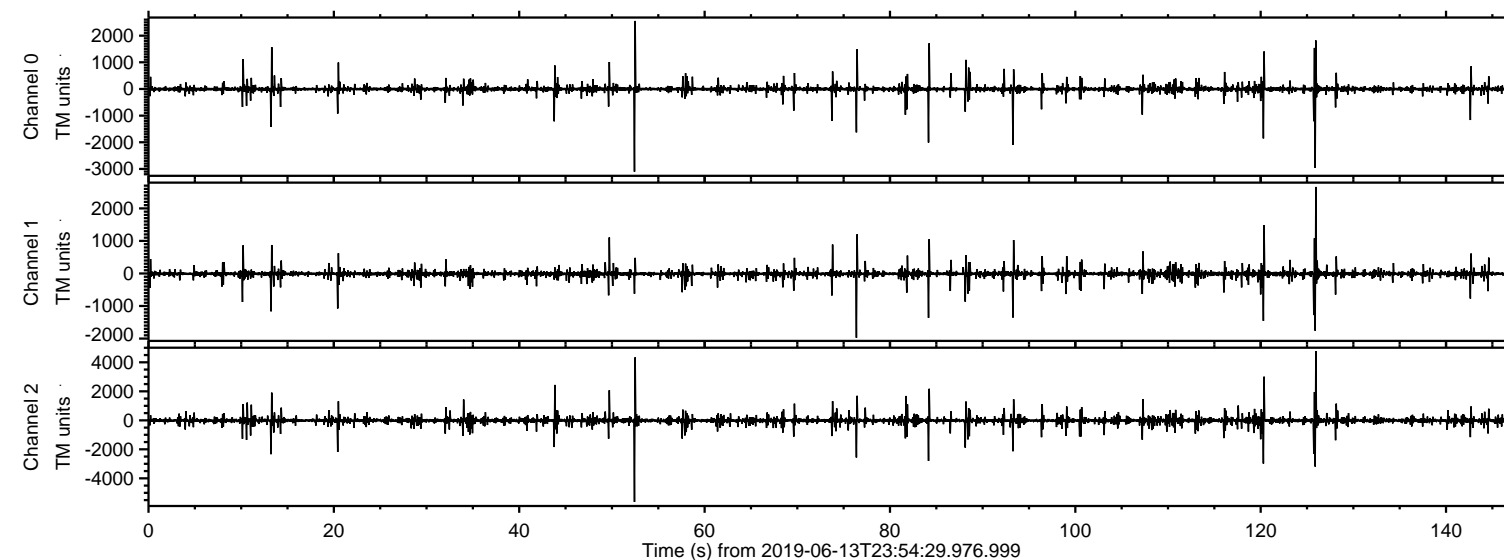


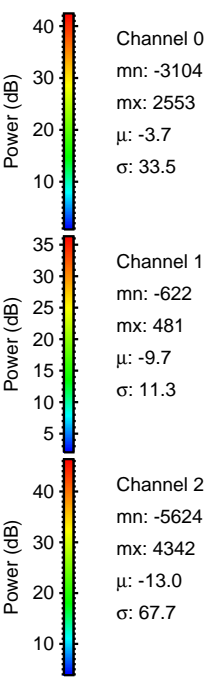
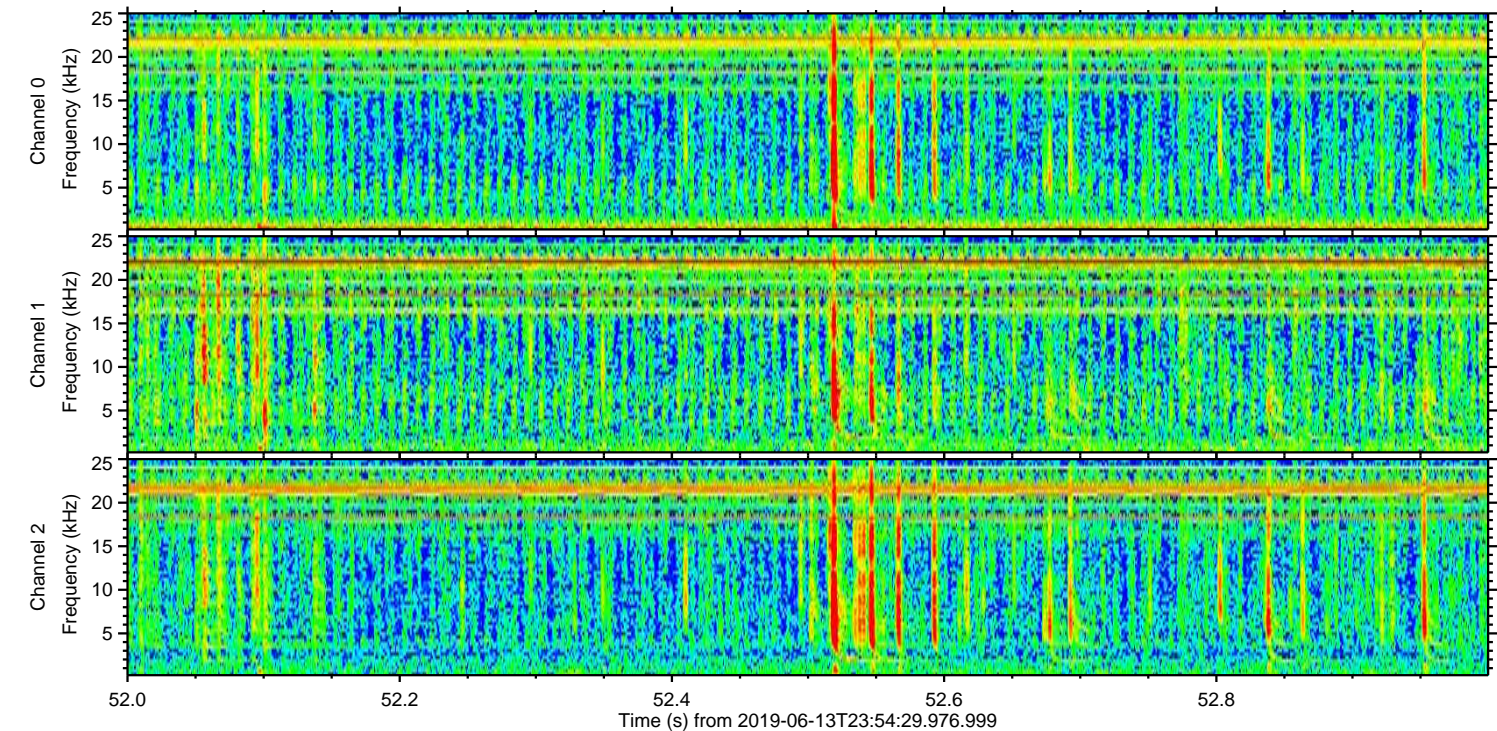
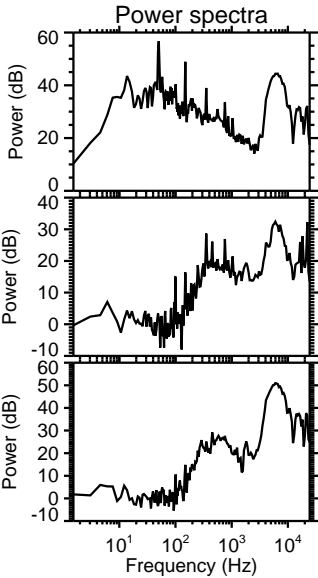
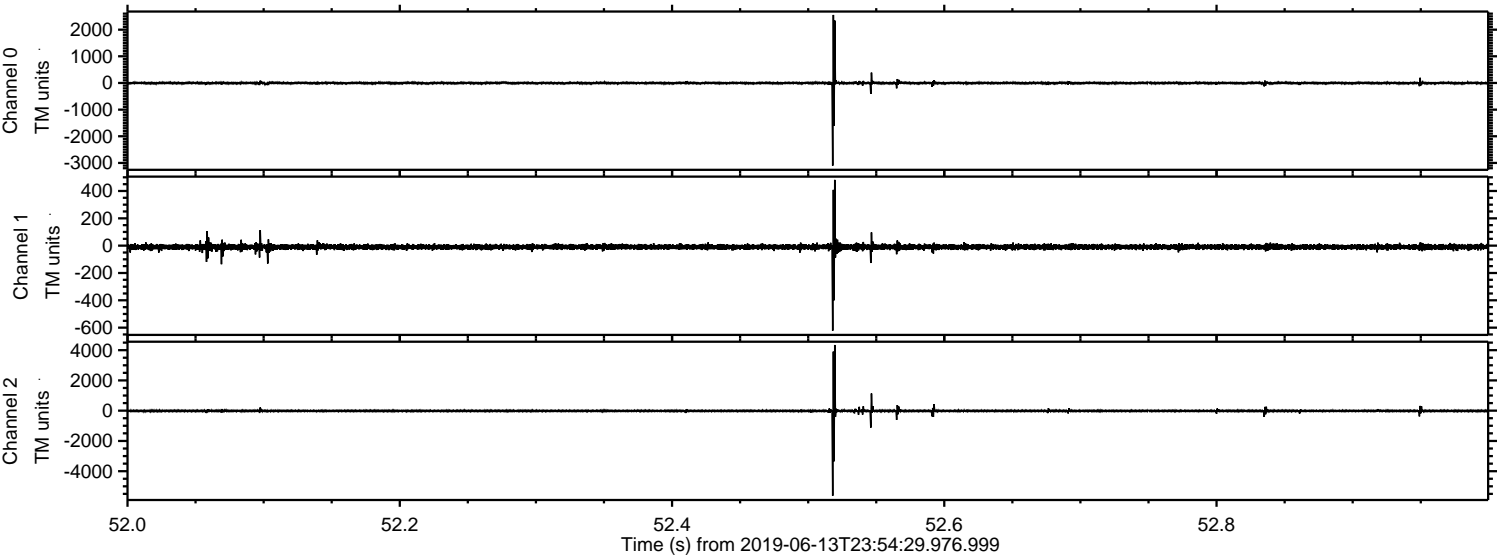
# ELMAVAN 3D WAVEFORMS (Measured data sampled at 50 kHz) 51000 packets of 144 samples from 2019-06-13T23:54:29.976.999.

Processed Fri Jun 14 02:02:39 2019 by ELM ver.2012-10-06 from 001\_\_elm20190613\_235428\_\_dat00.bin





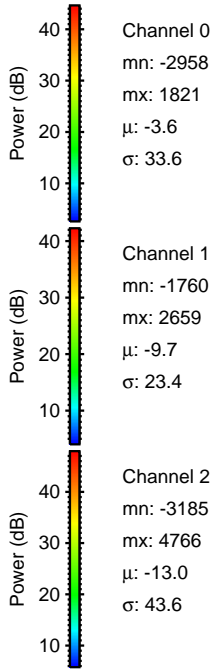
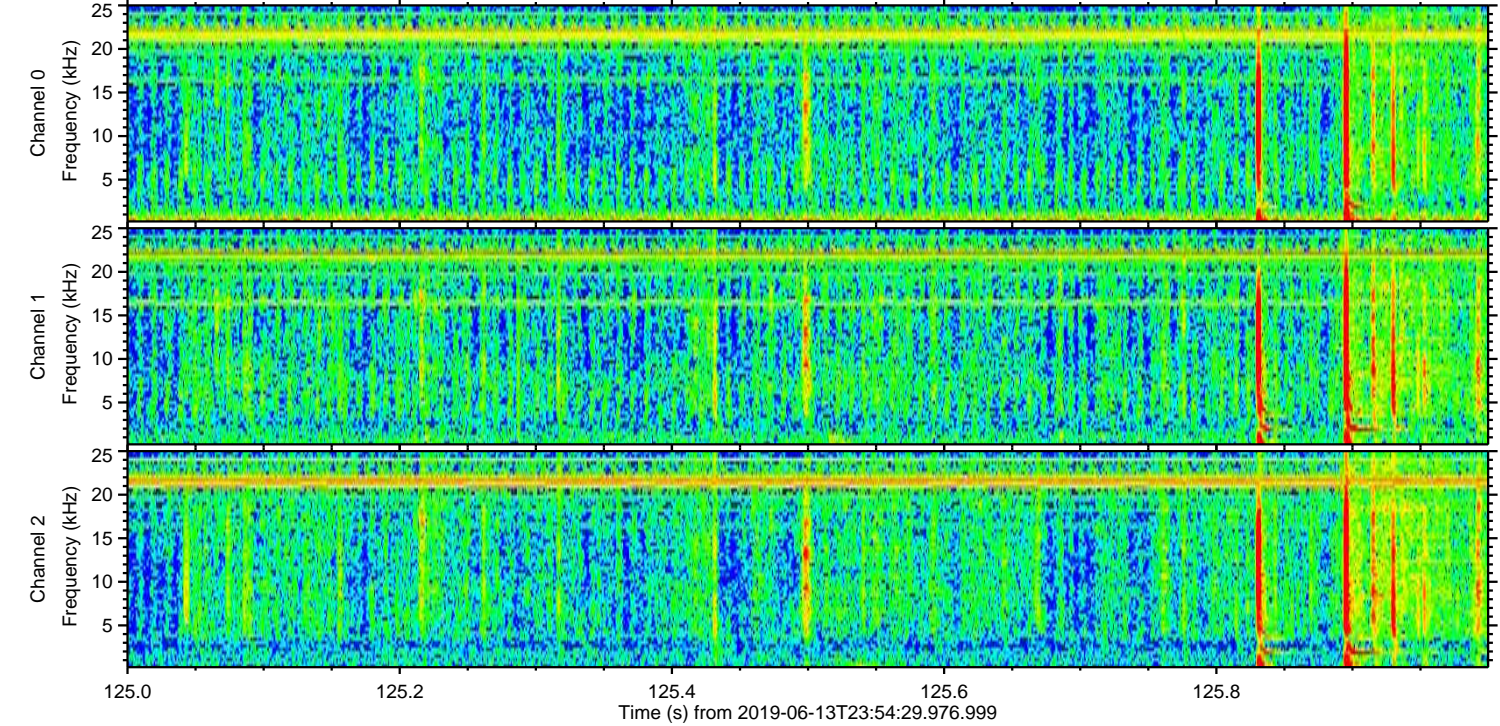
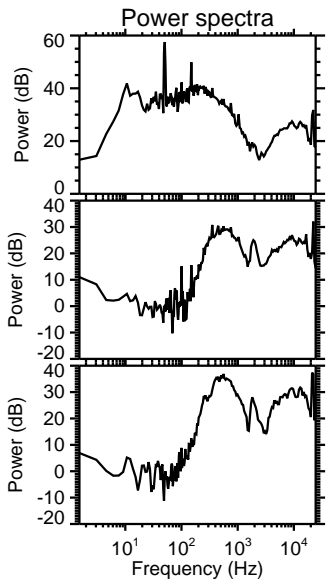
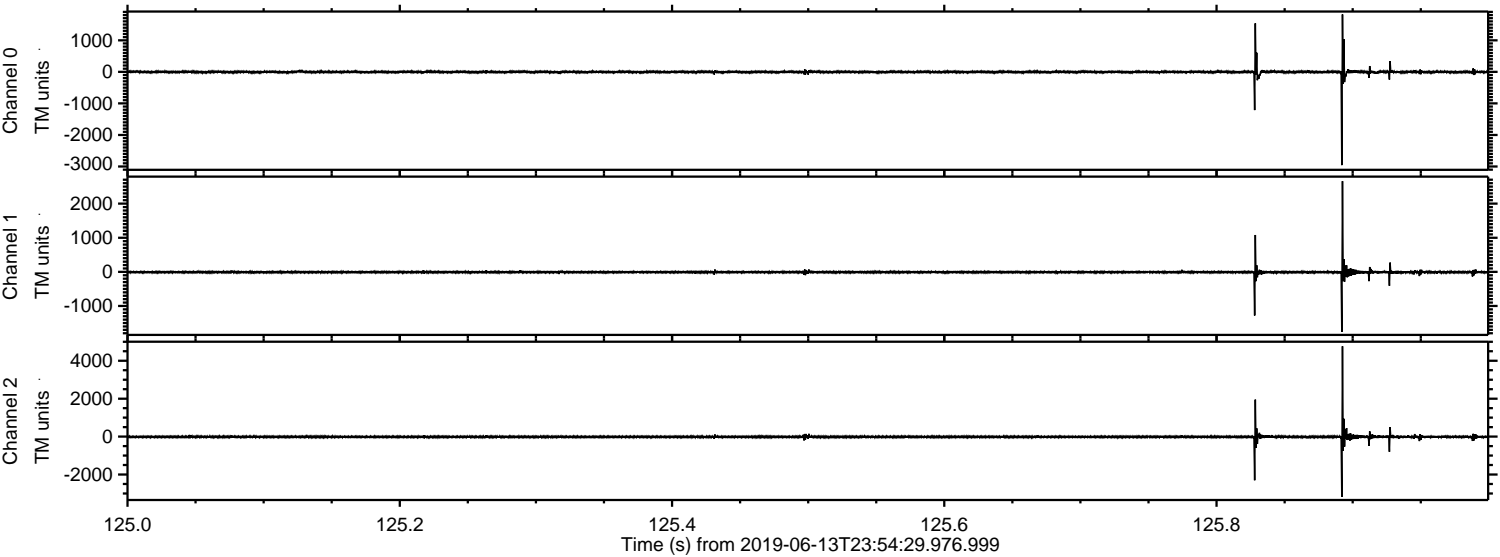
Processed Fri Jun 14 02:02:48 2019 by ELM ver.2012-10-06 from 001\_\_elm20190613\_235428\_\_dat00.bin





ELMAVAN 3D WAVEFORMS (Measured data sampled at 50 kHz) 51000 packets of 144 samples from 2019-06-13T23:54:29.976.999. Part 126/147

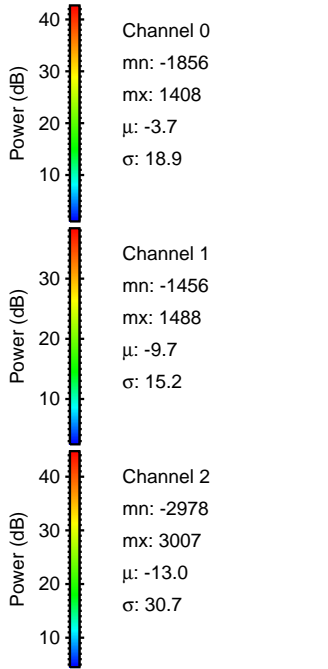
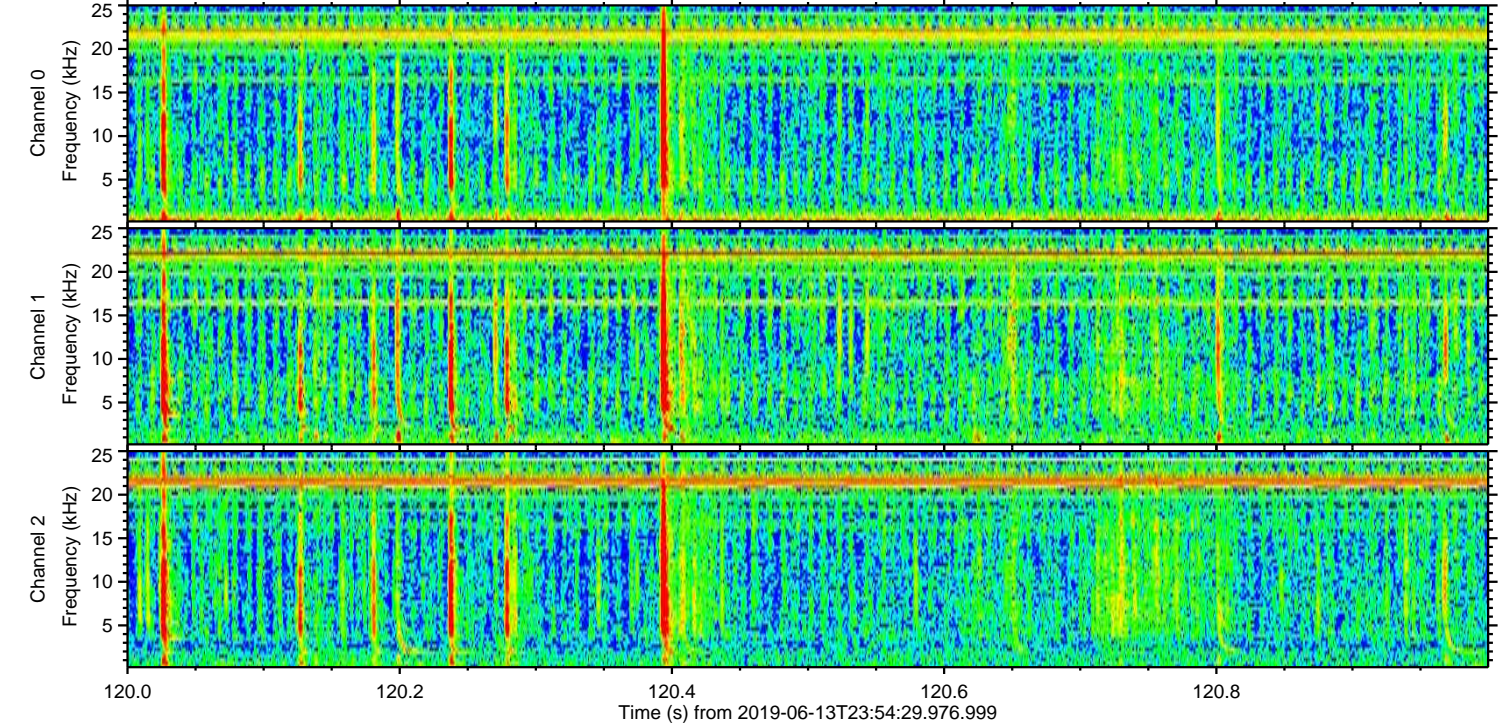
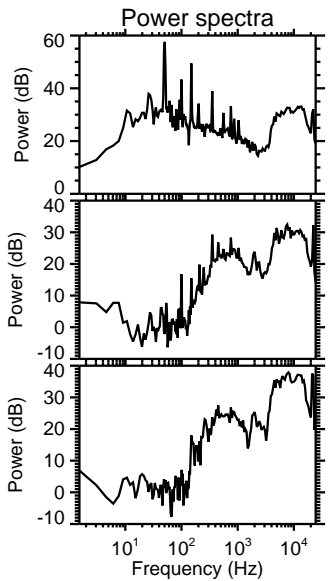
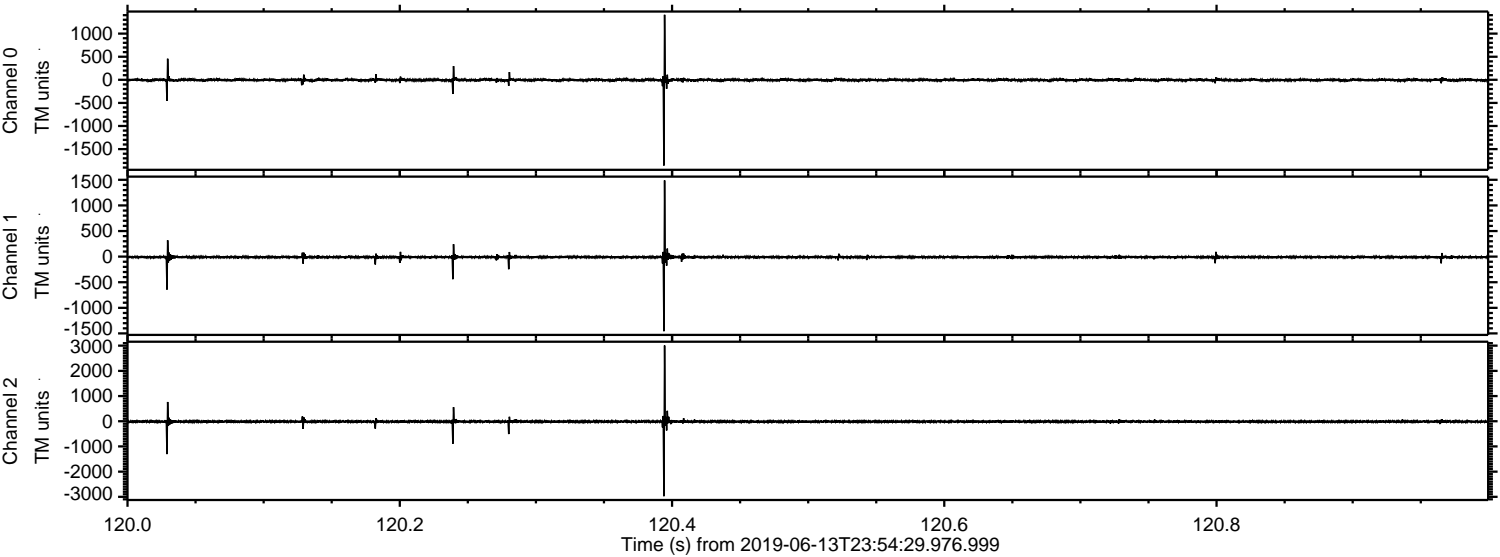
Processed Fri Jun 14 02:02:49 2019 by ELM ver.2012-10-06 from 001\_\_elm20190613\_235428\_\_dat00.bin





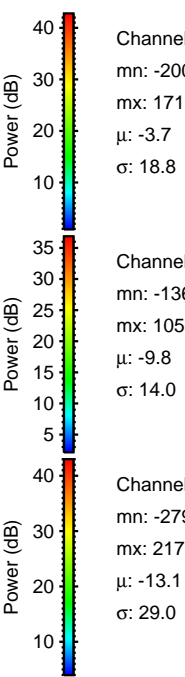
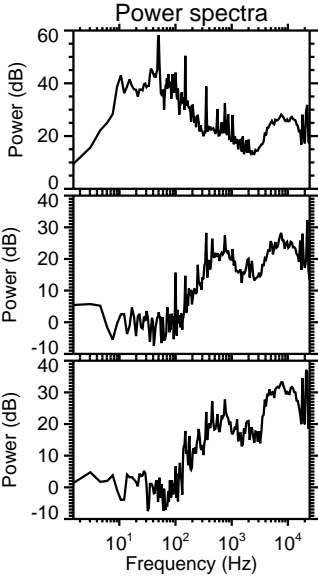
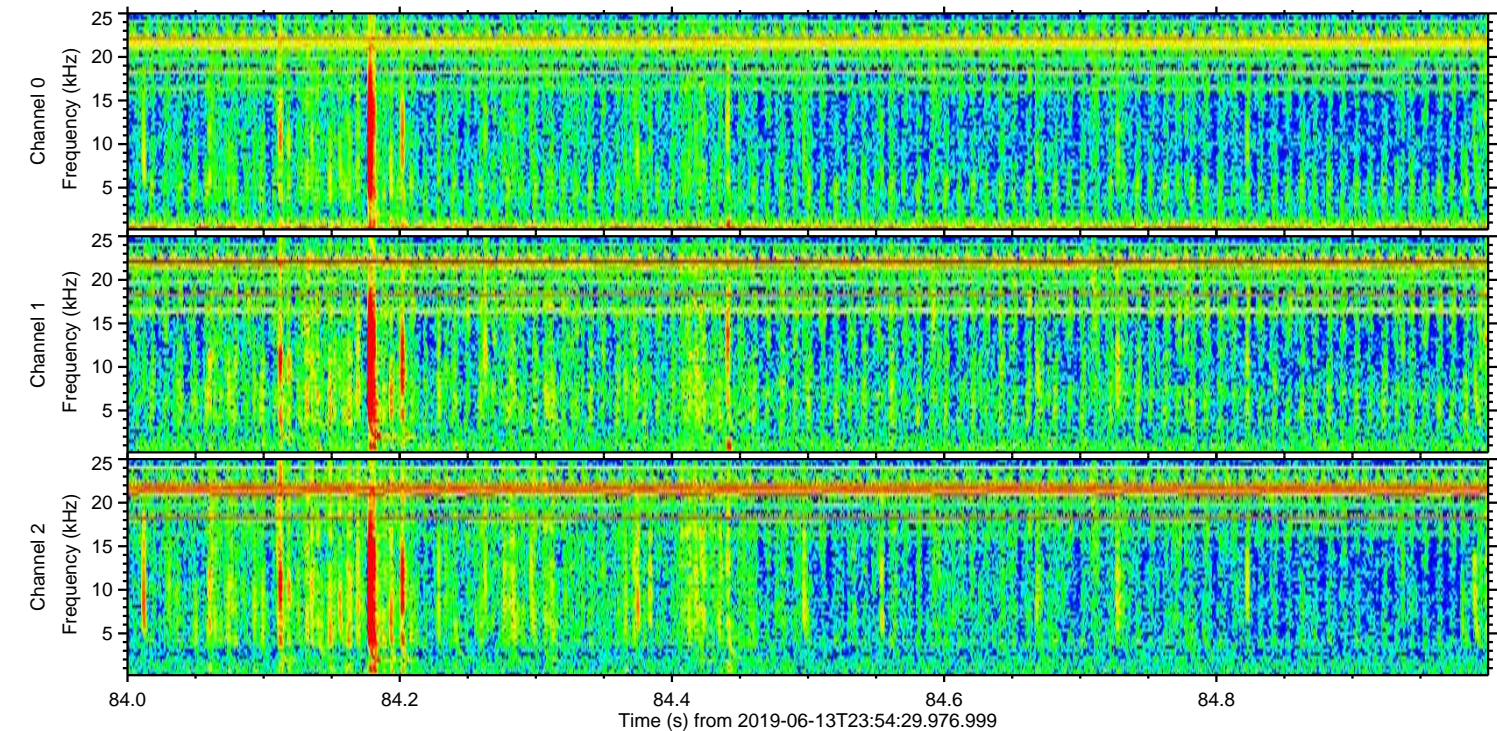
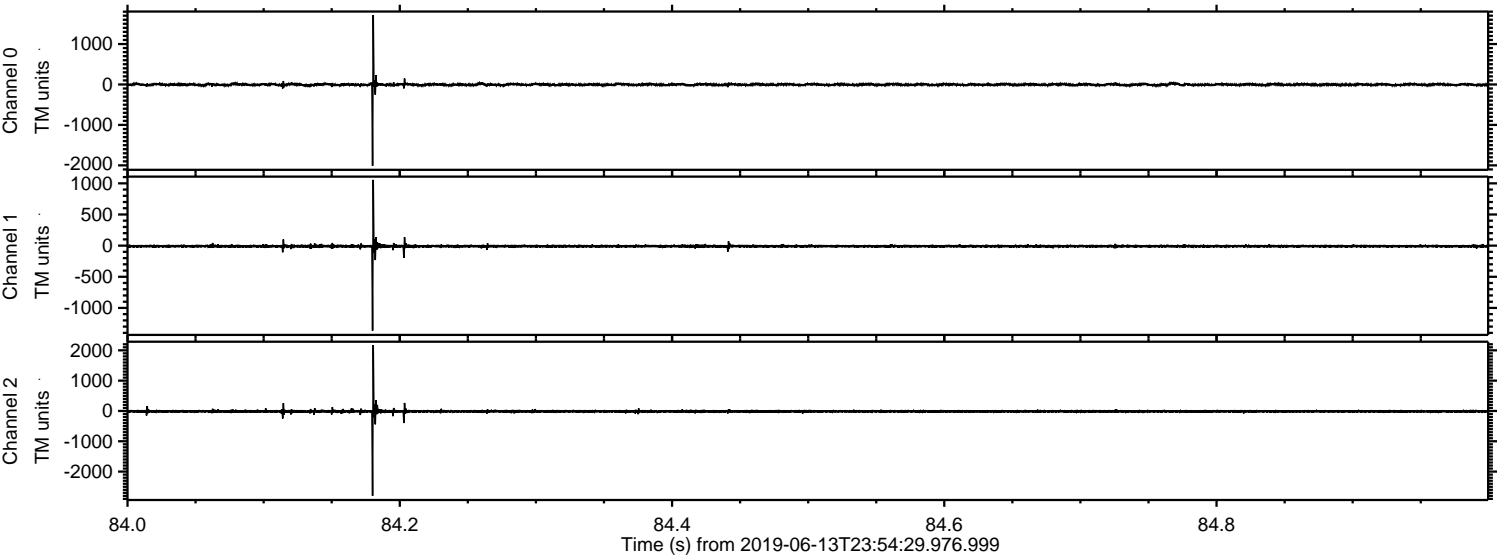
ELMAVAN 3D WAVEFORMS (Measured data sampled at 50 kHz) 51000 packets of 144 samples from 2019-06-13T23:54:29.976.999. Part 121/147

Processed Fri Jun 14 02:02:50 2019 by ELM ver.2012-10-06 from 001\_\_elm20190613\_235428\_\_dat00.bin



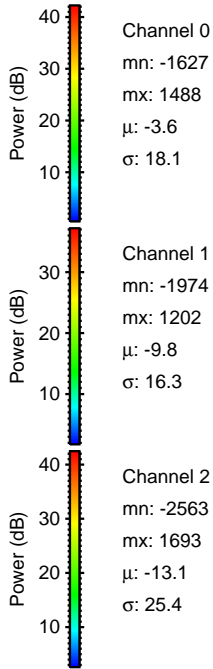
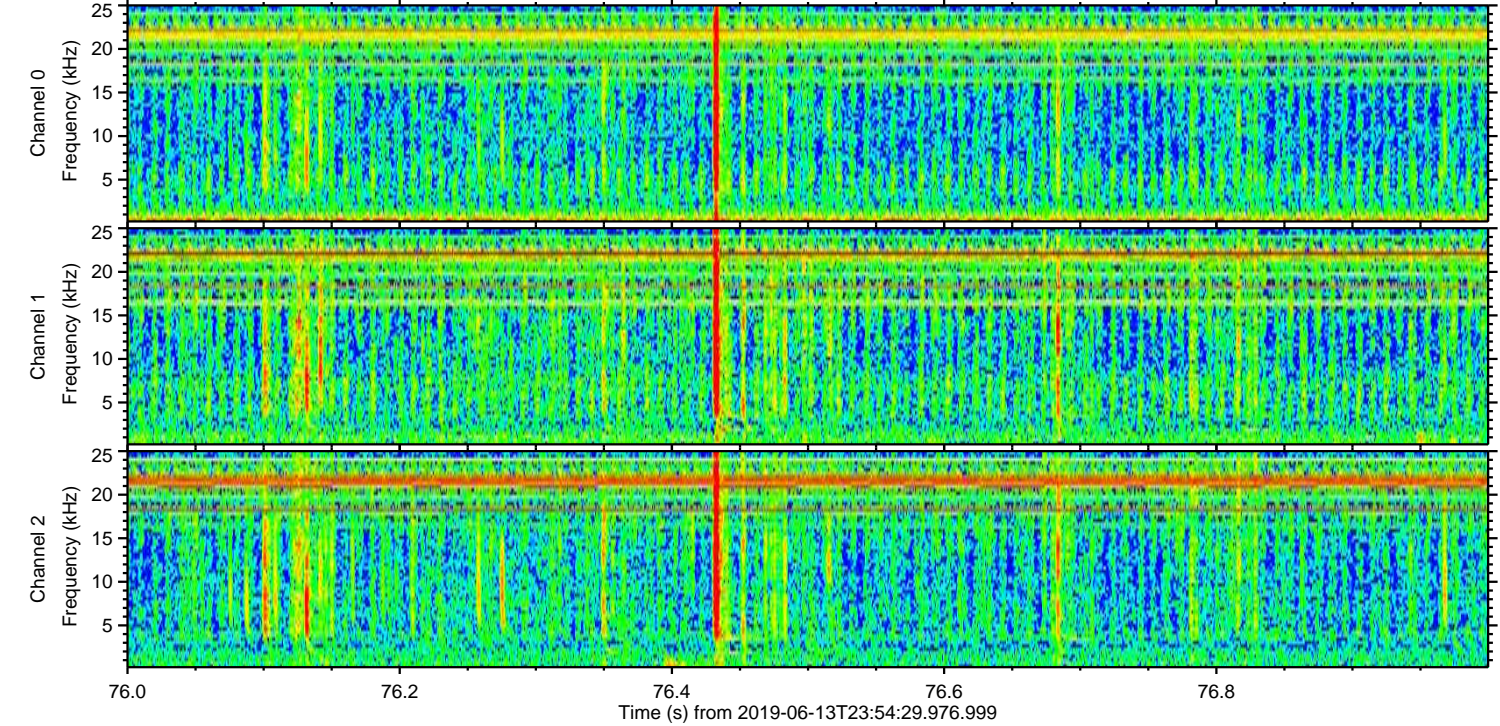
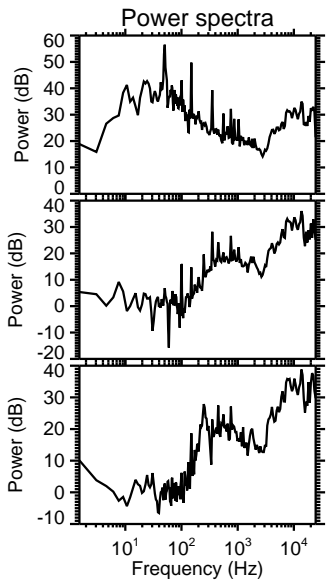
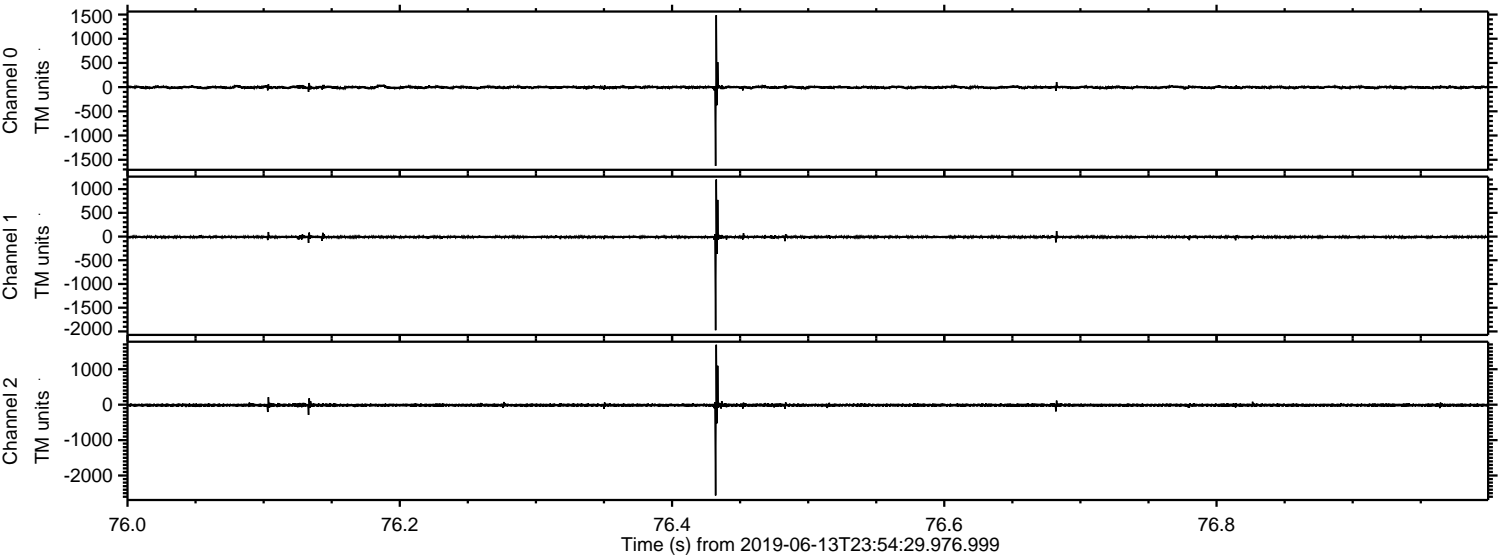


Processed Fri Jun 14 02:02:51 2019 by ELM ver.2012-10-06 from 001\_\_elm20190613\_235428\_\_dat00.bin





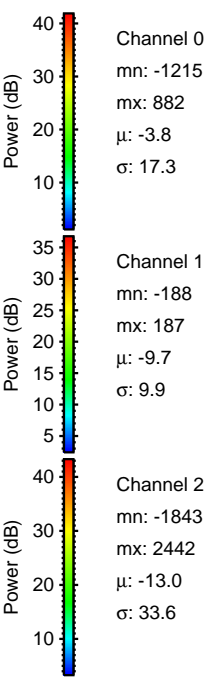
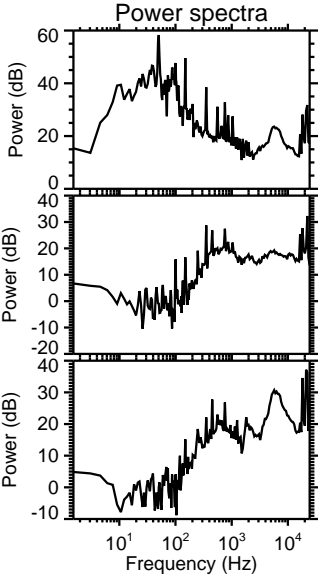
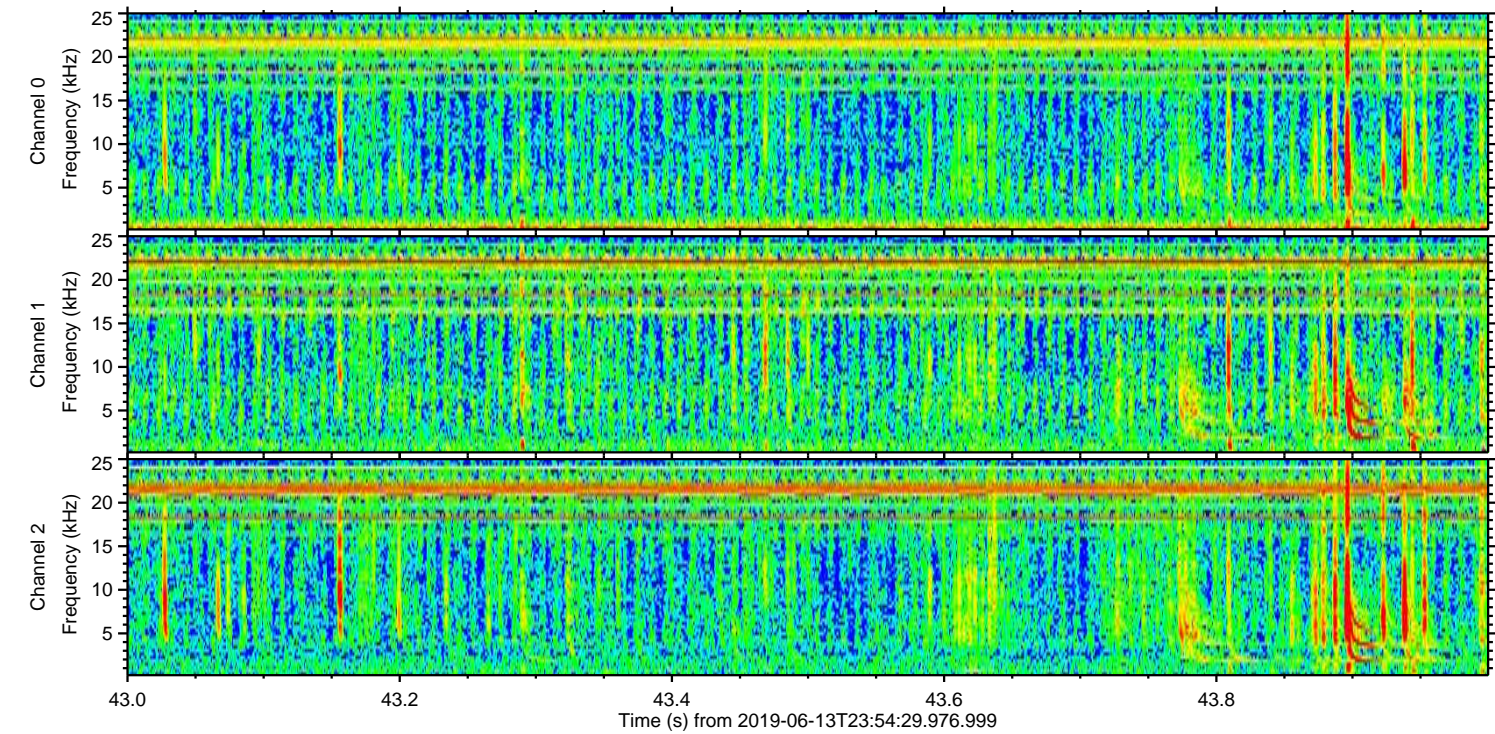
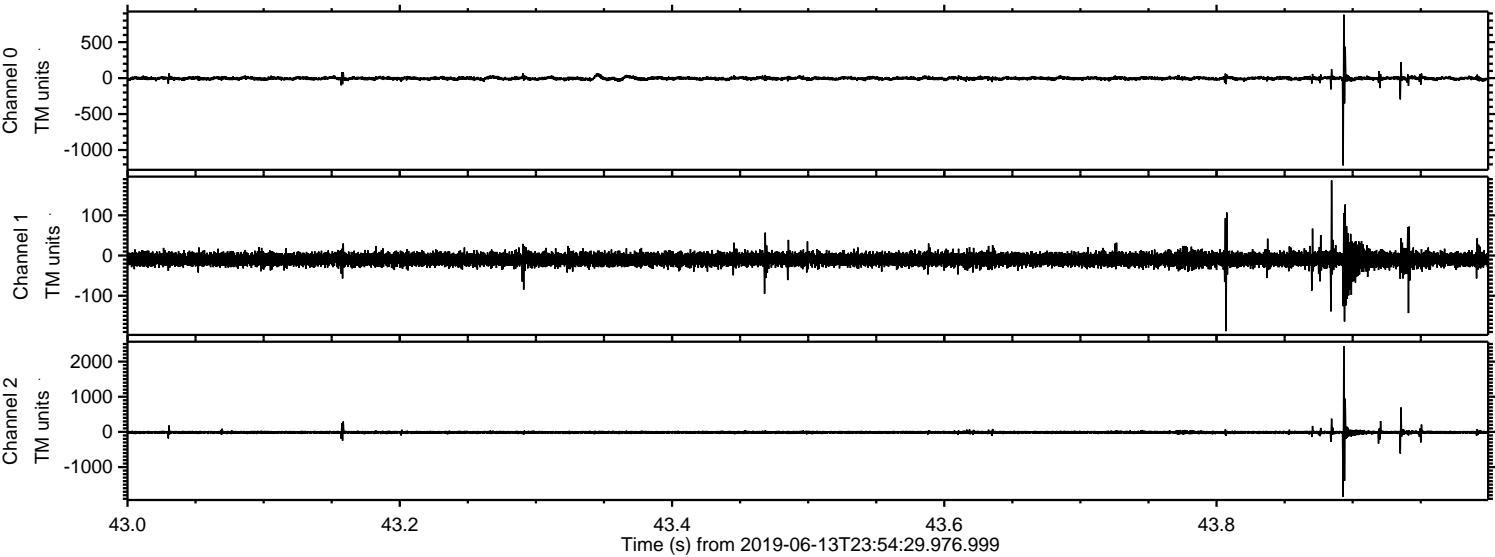
Processed Fri Jun 14 02:02:51 2019 by ELM ver.2012-10-06 from 001\_\_elm20190613\_235428\_\_dat00.bin





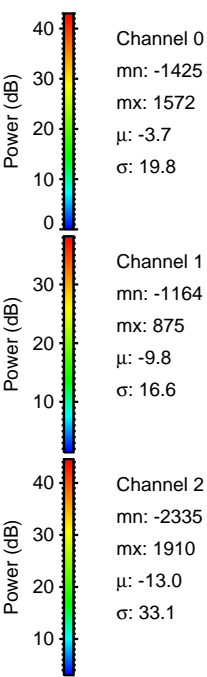
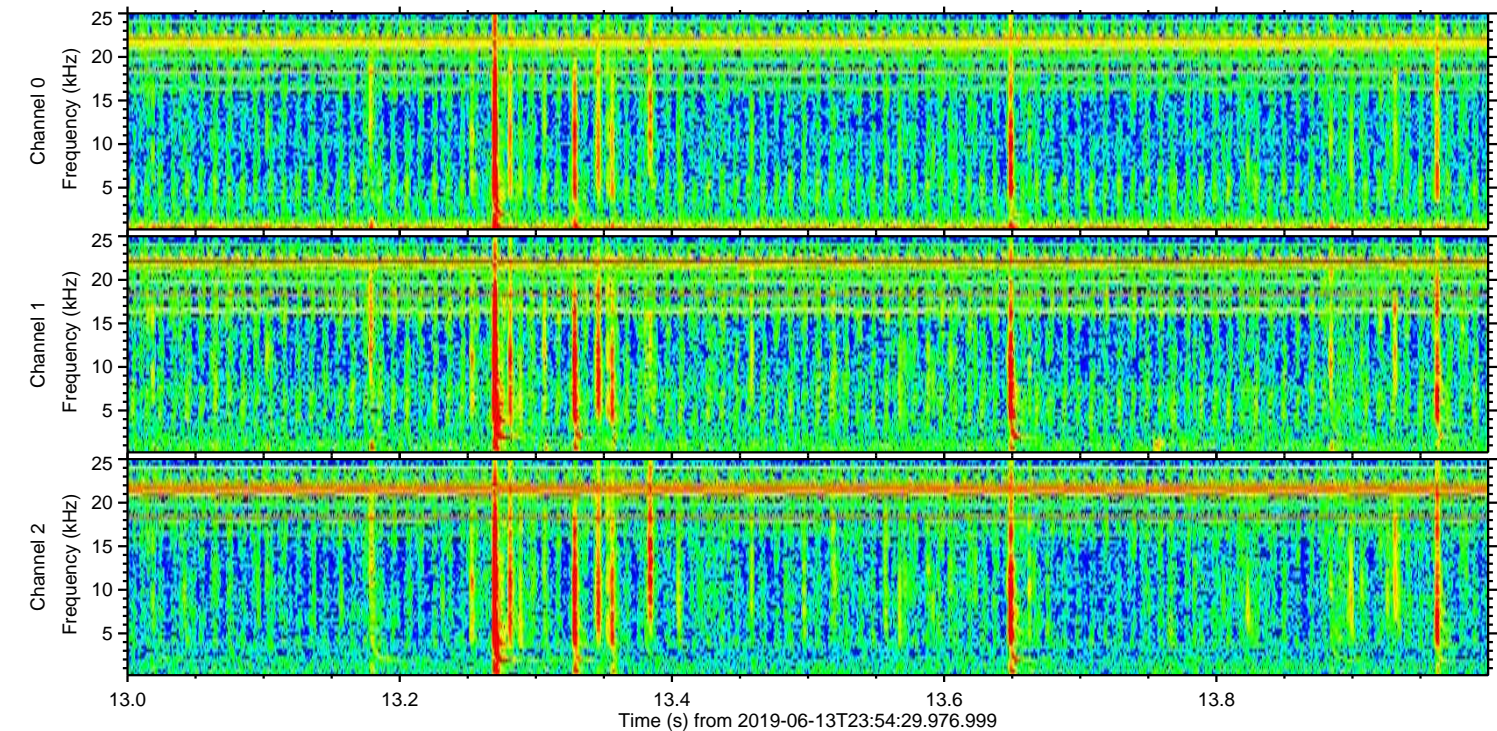
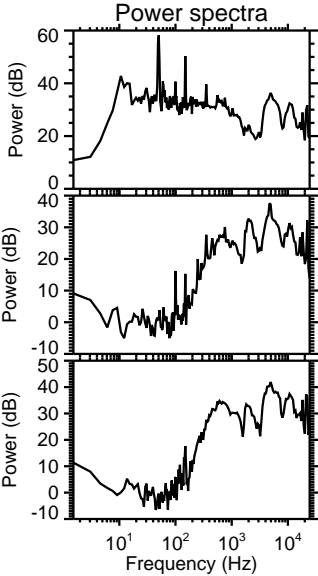
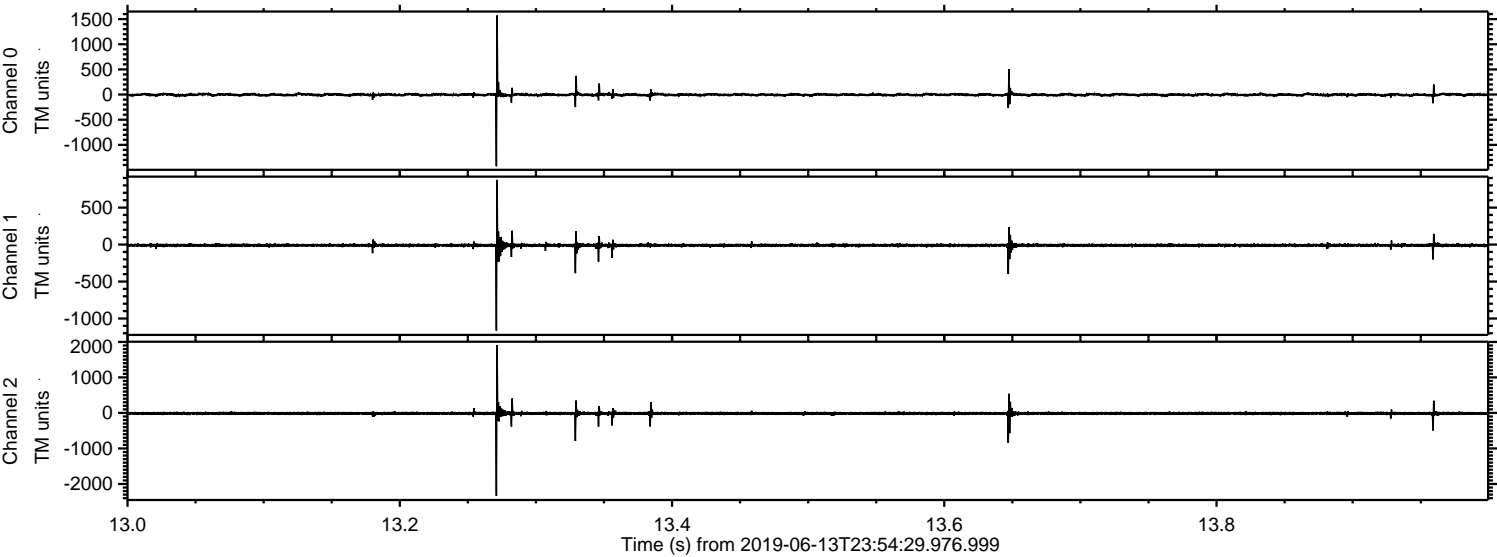
ELMAVAN 3D WAVEFORMS (Measured data sampled at 50 kHz) 51000 packets of 144 samples from 2019-06-13T23:54:29.976.999. Part 44/147

Processed Fri Jun 14 02:02:52 2019 by ELM ver.2012-10-06 from 001\_\_elm20190613\_235428\_\_dat00.bin





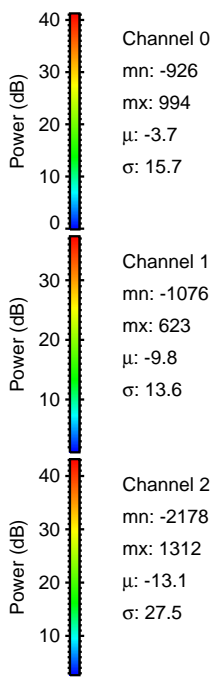
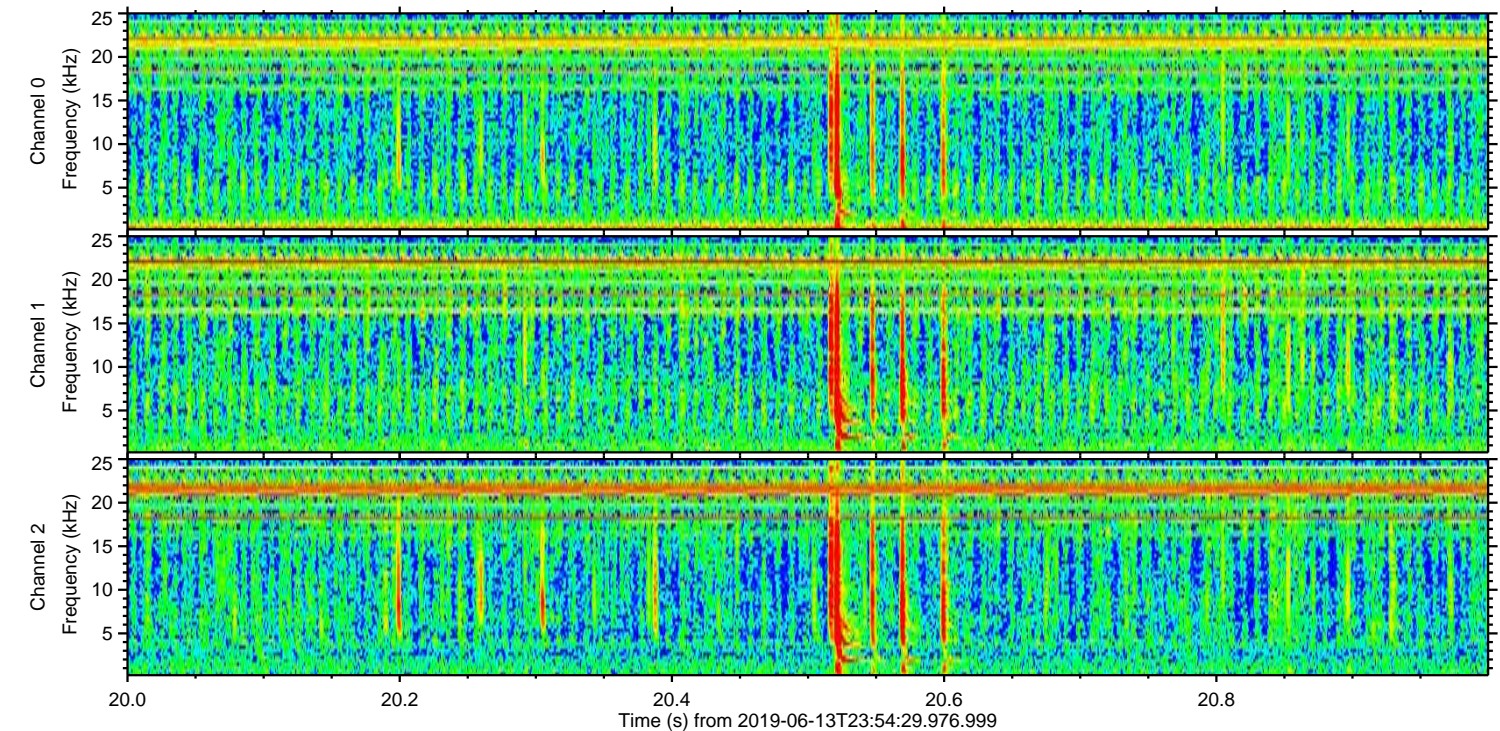
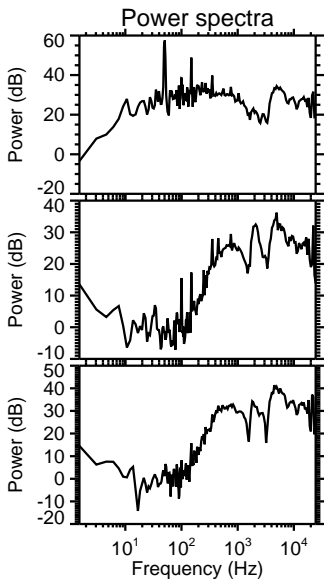
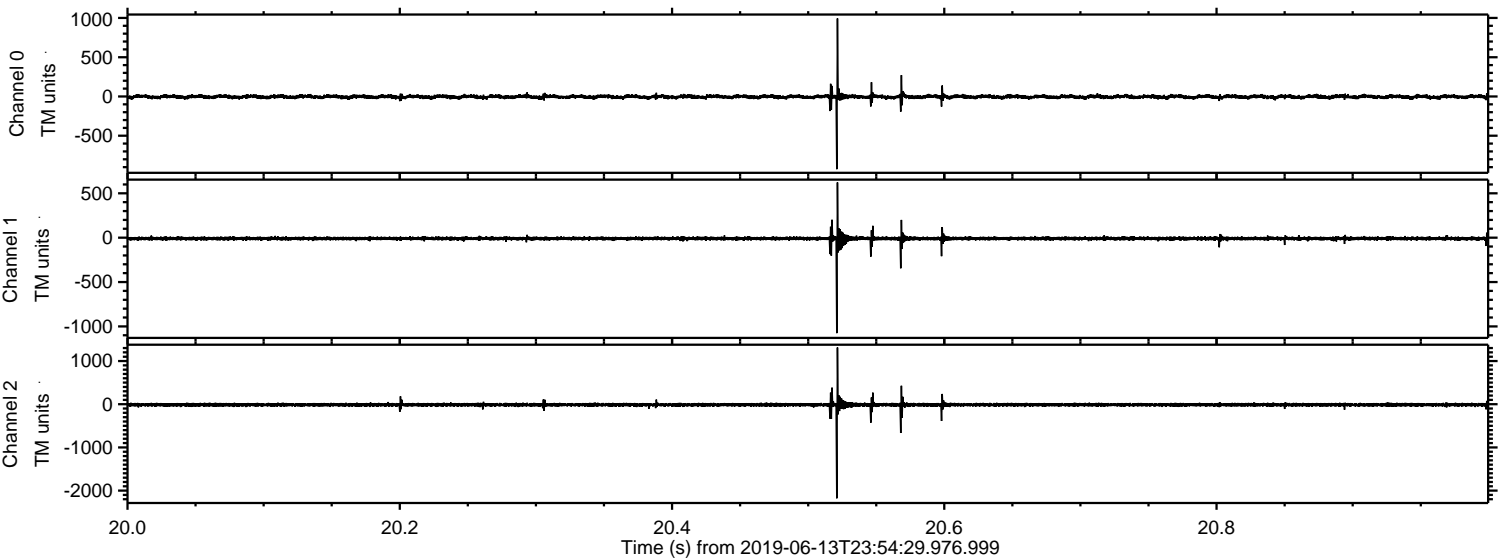
Processed Fri Jun 14 02:02:53 2019 by ELM ver.2012-10-06 from 001\_\_elm20190613\_235428\_\_dat00.bin





ELMAVAN 3D WAVEFORMS (Measured data sampled at 50 kHz) 51000 packets of 144 samples from 2019-06-13T23:54:29.976.999. Part 21/147

Processed Fri Jun 14 02:02:54 2019 by ELM ver.2012-10-06 from 001\_\_elm20190613\_235428\_\_dat00.bin



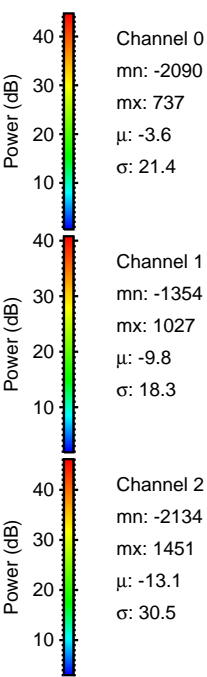
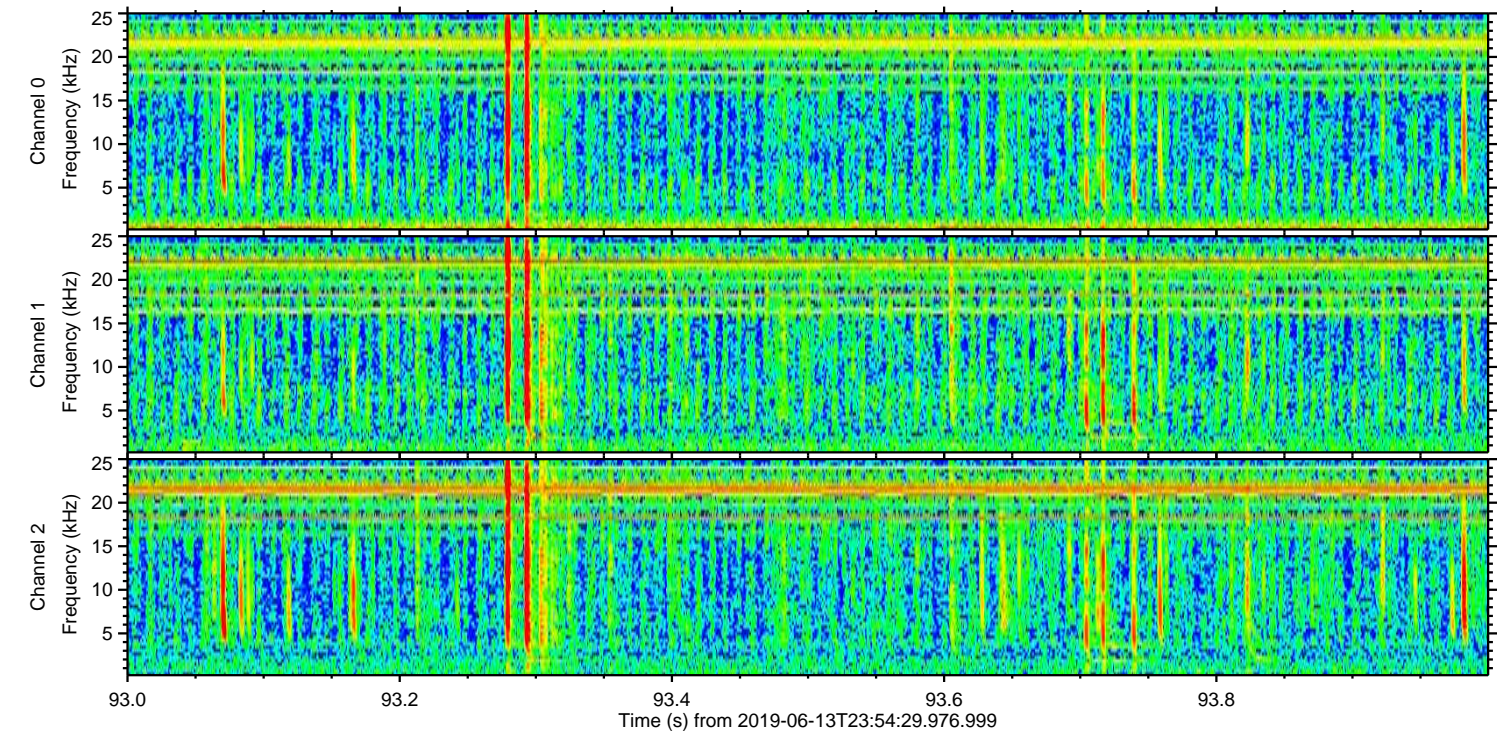
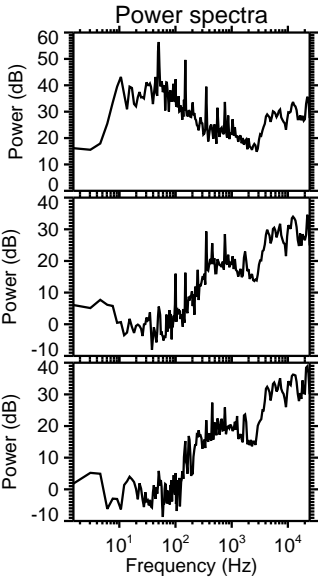
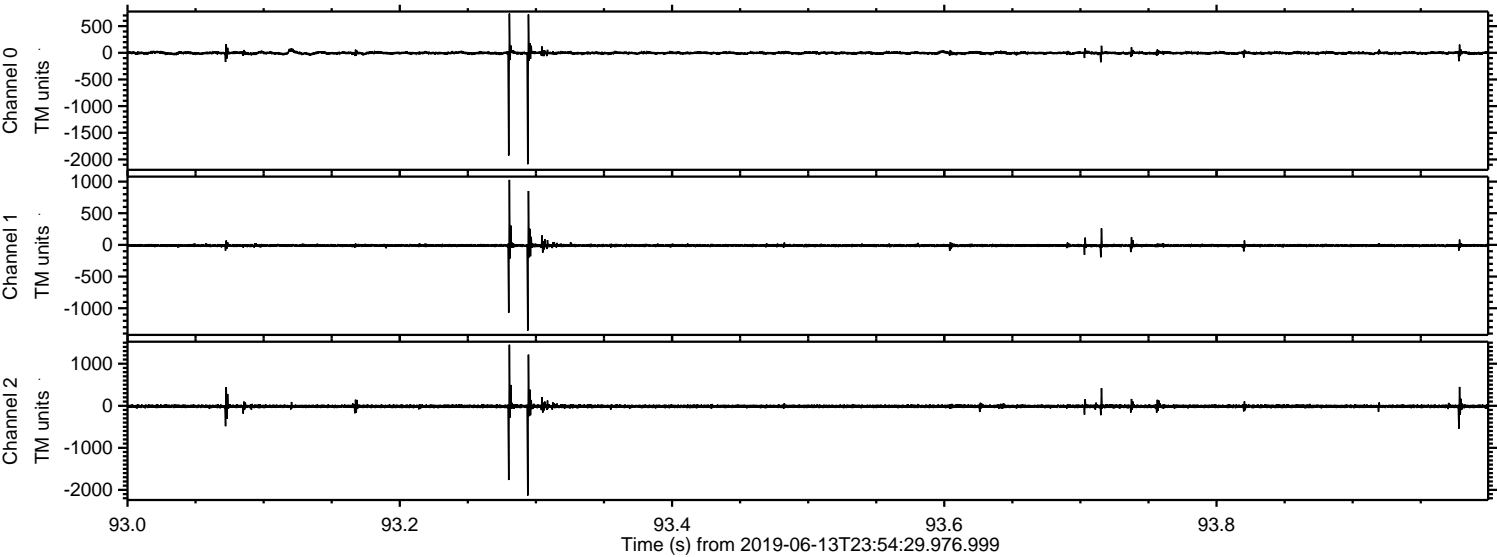
Channel 0  
mn: -926  
mx: 994  
 $\mu$ : -3.7  
 $\sigma$ : 15.7

Channel 1  
mn: -1076  
mx: 623  
 $\mu$ : -9.8  
 $\sigma$ : 13.6

Channel 2  
mn: -2178  
mx: 1312  
 $\mu$ : -13.1  
 $\sigma$ : 27.5



Processed Fri Jun 14 02:02:54 2019 by ELM ver.2012-10-06 from 001\_\_elm20190613\_235428\_\_dat00.bin





Processed Fri Jun 14 02:02:55 2019 by ELM ver.2012-10-06 from 001\_\_elm20190613\_235428\_\_dat00.bin

