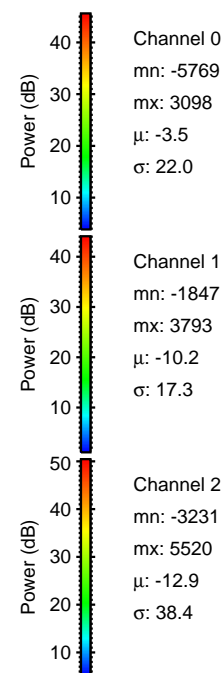
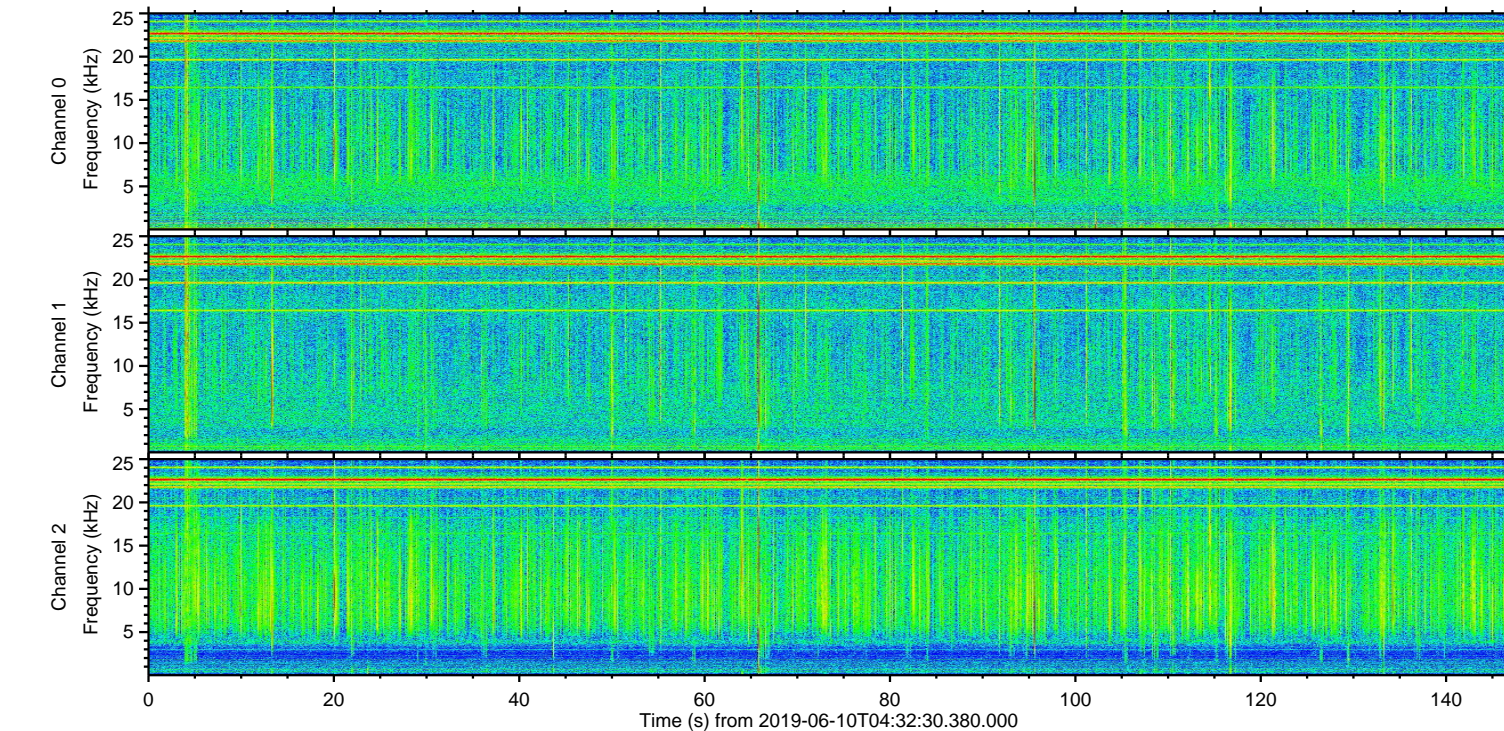
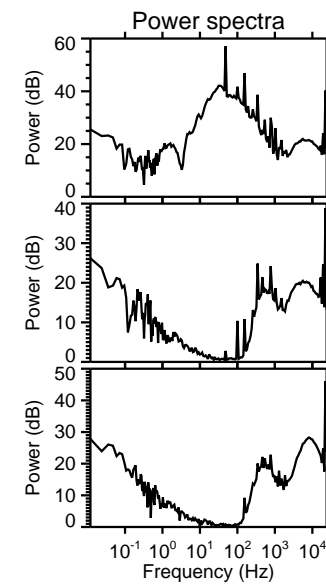
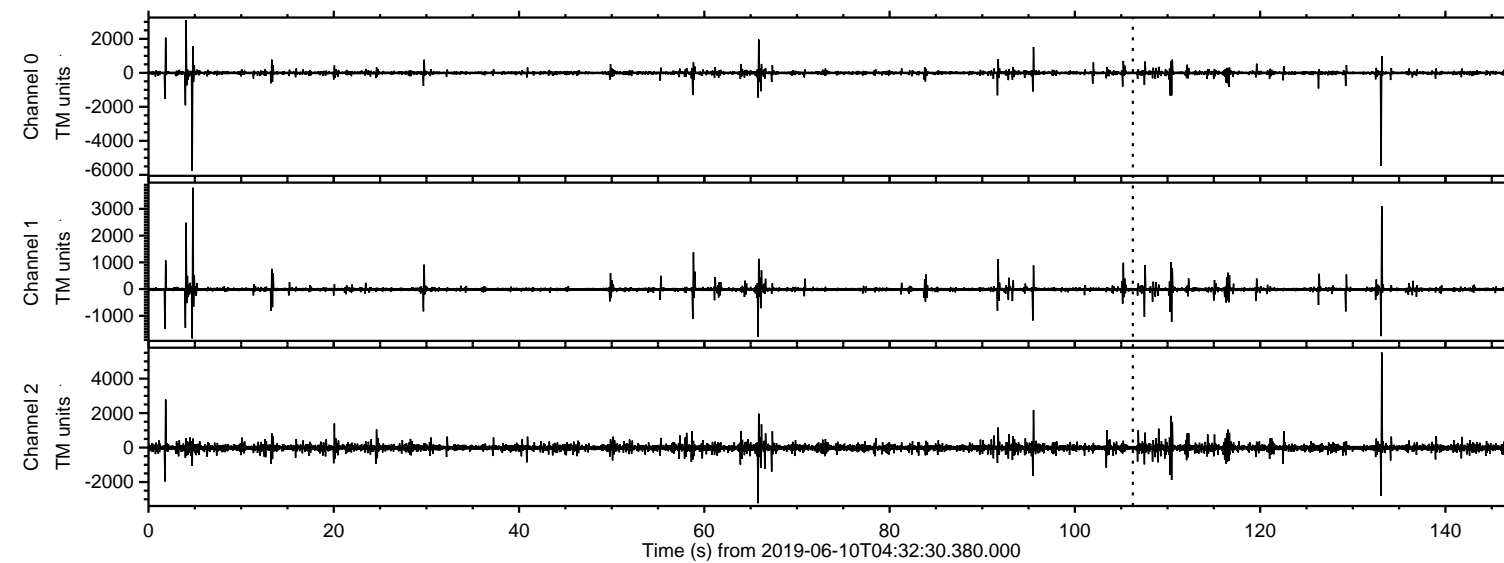


ELMAVAN 3D WAVEFORMS (Measured data sampled at 50 kHz) 50999 packets of 144 samples from 2019-06-10T04:32:30.380.000.

Processed Mon Jun 10 06:39:50 2019 by ELM ver.2012-10-06 from 001__elm20190610_043229__dat00.bin

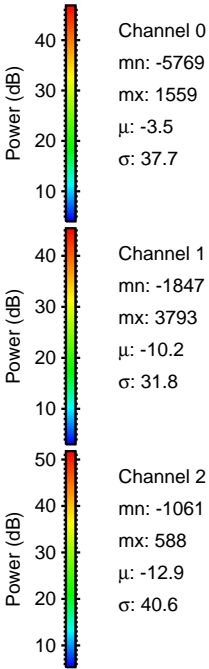
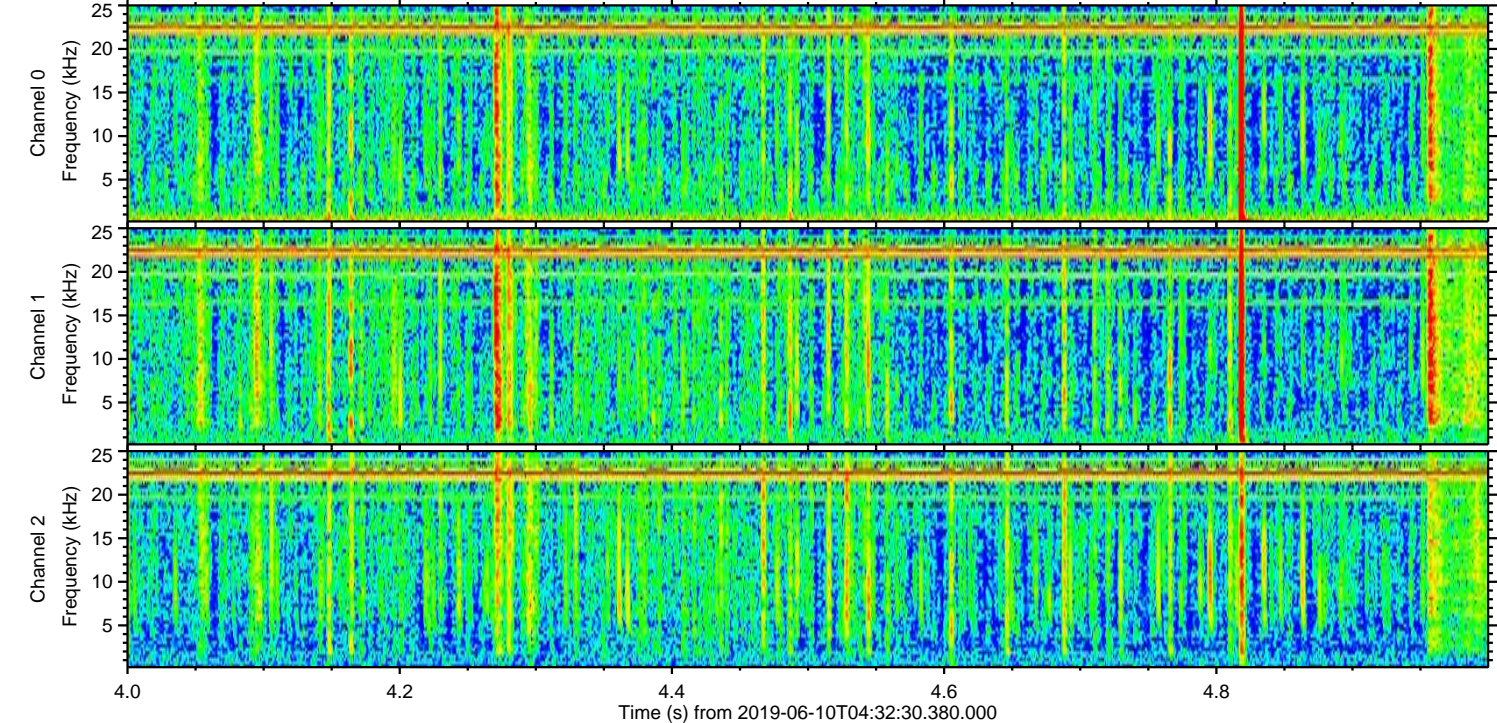
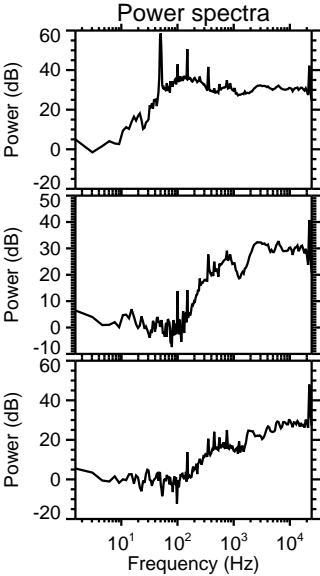
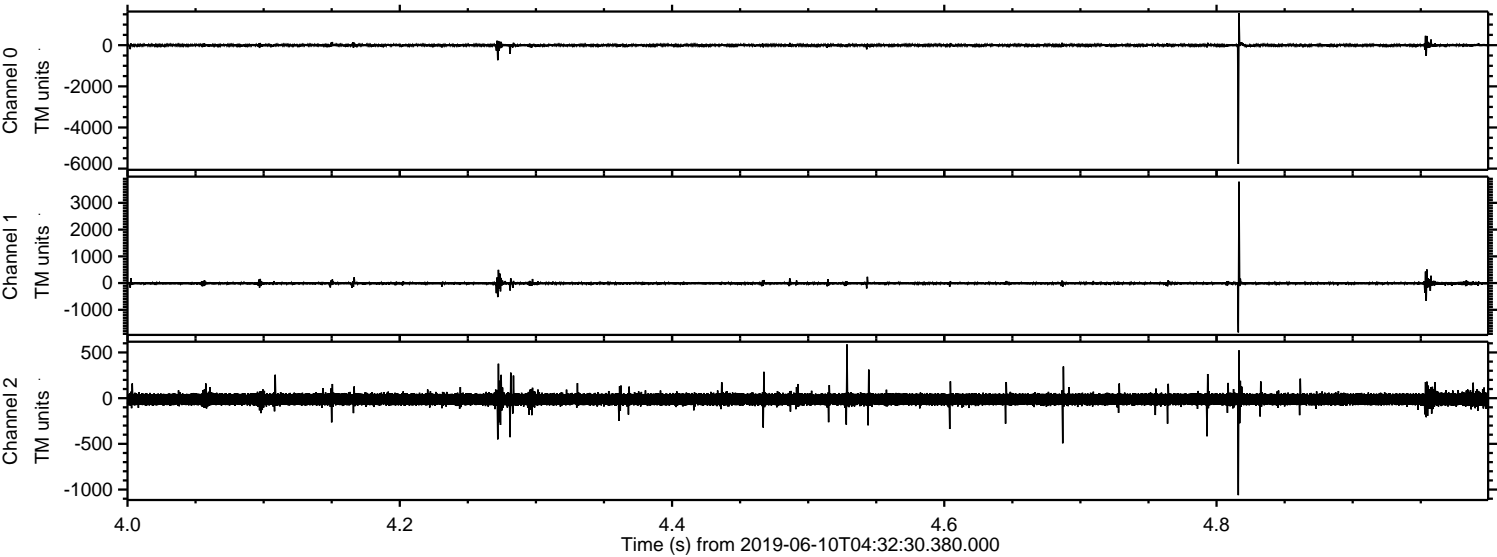


Channel 0
mn: -5769
mx: 3098
 μ : -3.5
 σ : 22.0

Channel 1
mn: -1847
mx: 3793
 μ : -10.2
 σ : 17.3

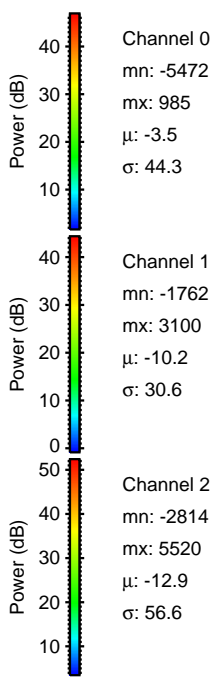
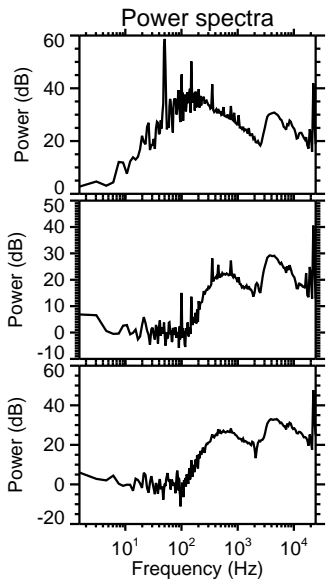
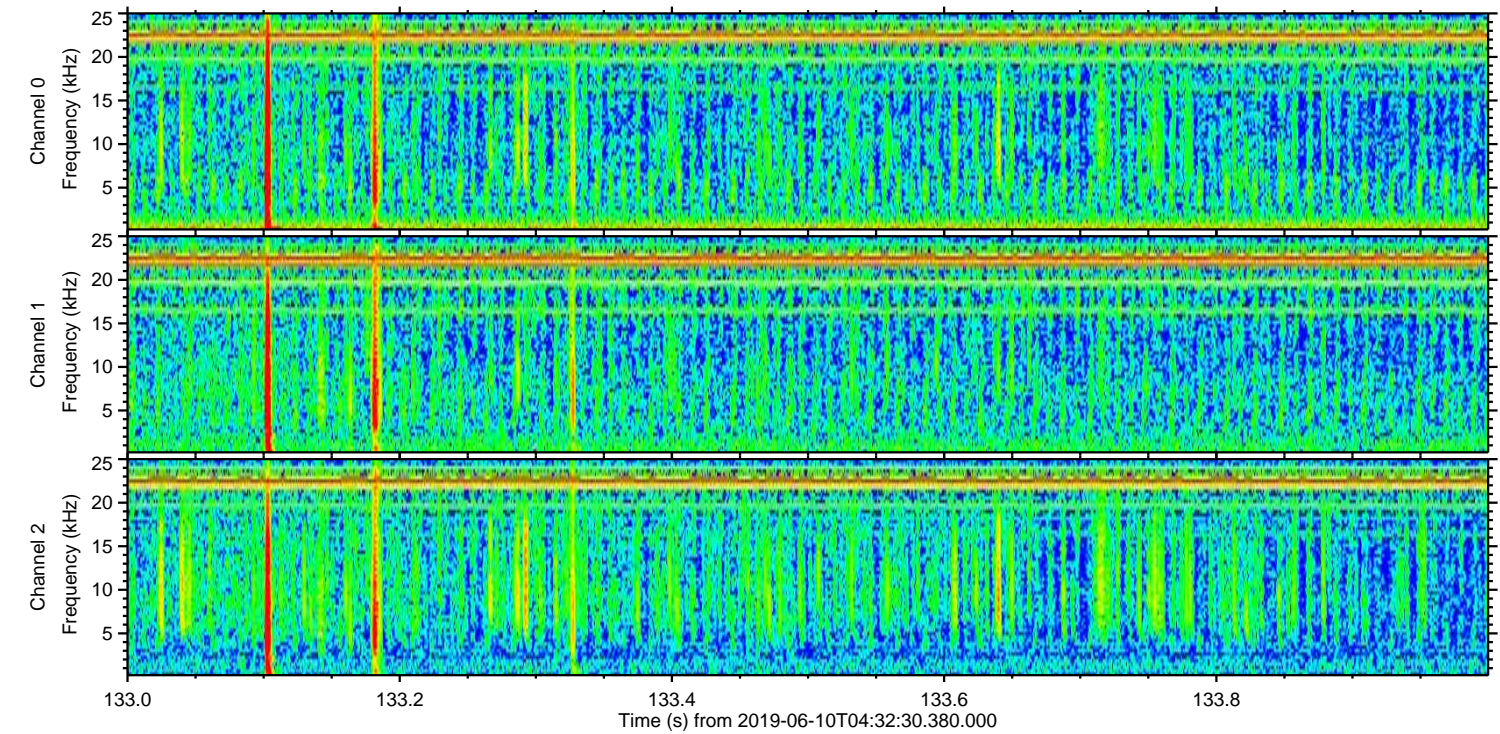
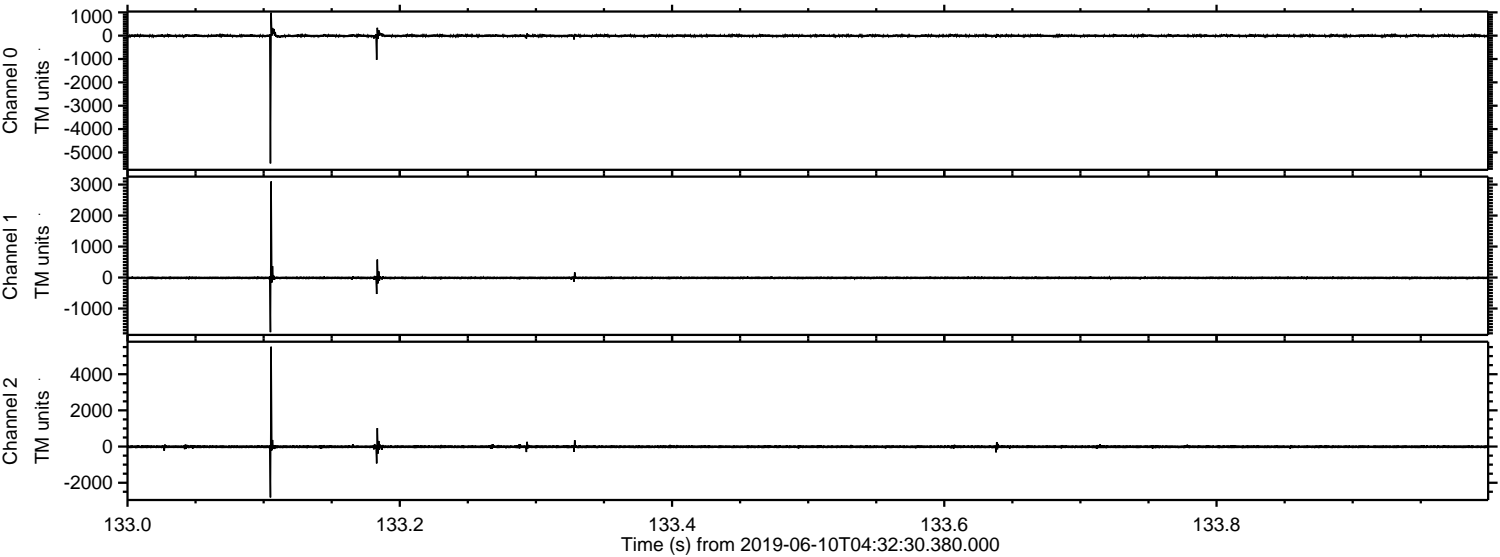
Channel 2
mn: -3231
mx: 5520
 μ : -12.9
 σ : 38.4

Processed Mon Jun 10 06:40:02 2019 by ELM ver.2012-10-06 from 001__elm20190610_043229__dat00.bin

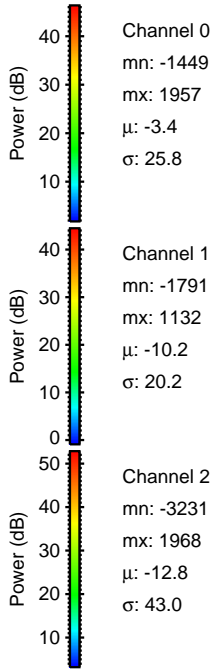
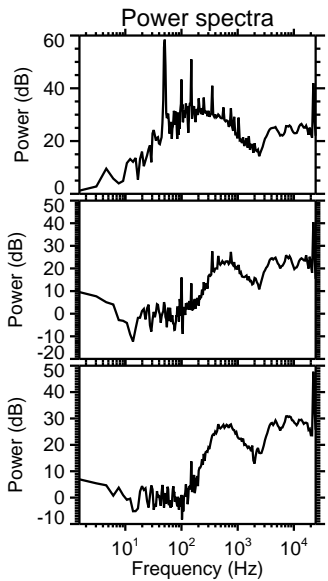
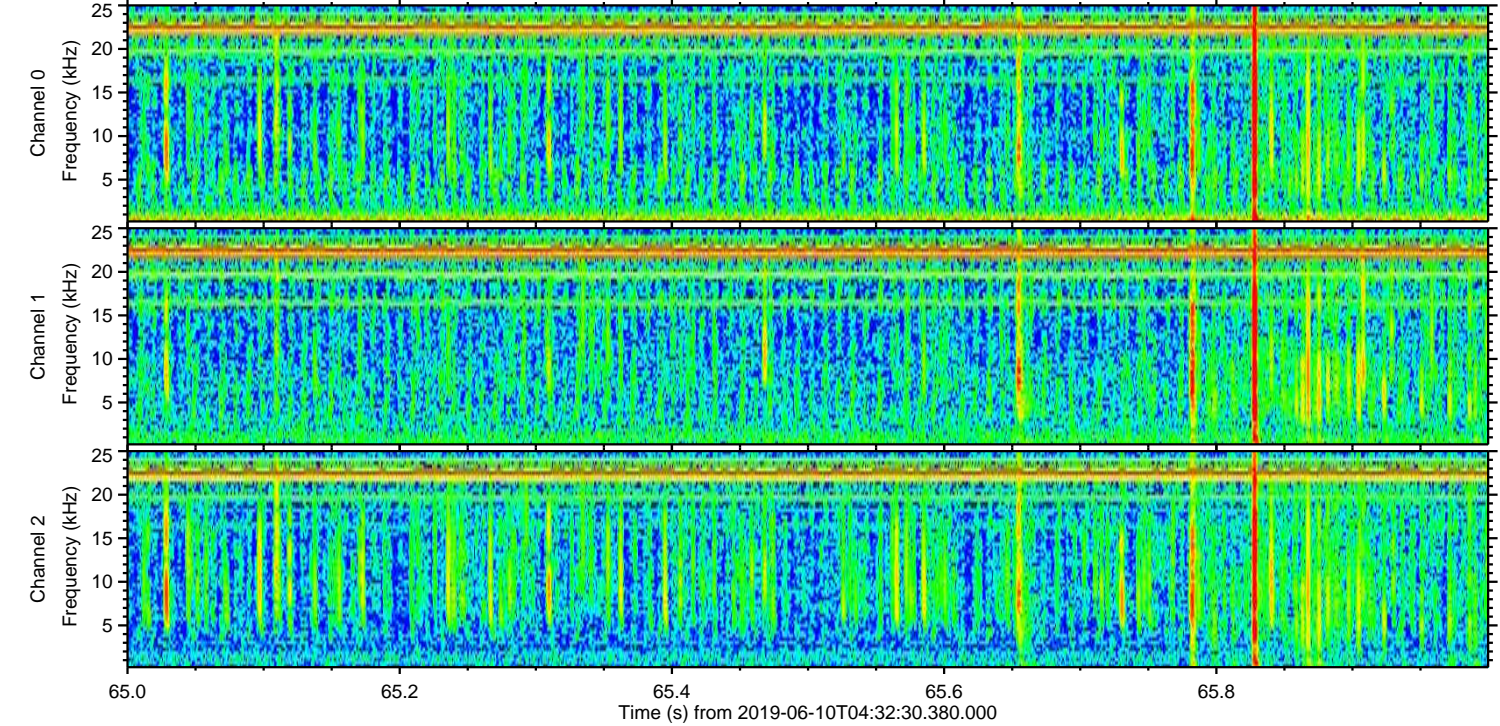
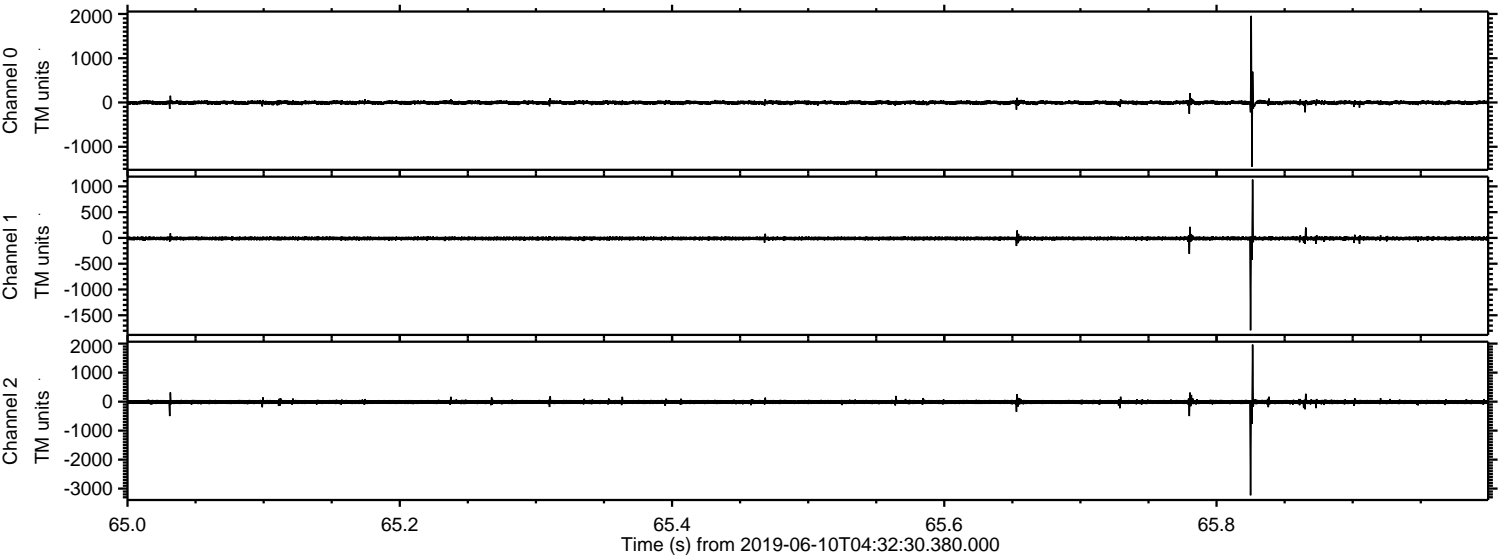


ELMAVAN 3D WAVEFORMS (Measured data sampled at 50 kHz) 50999 packets of 144 samples from 2019-06-10T04:32:30.380.000. Part 134/147

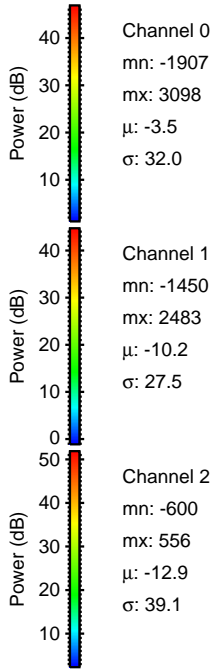
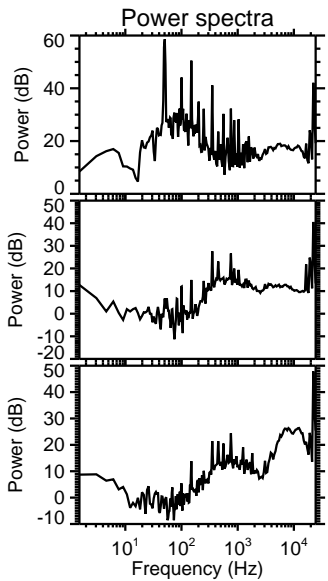
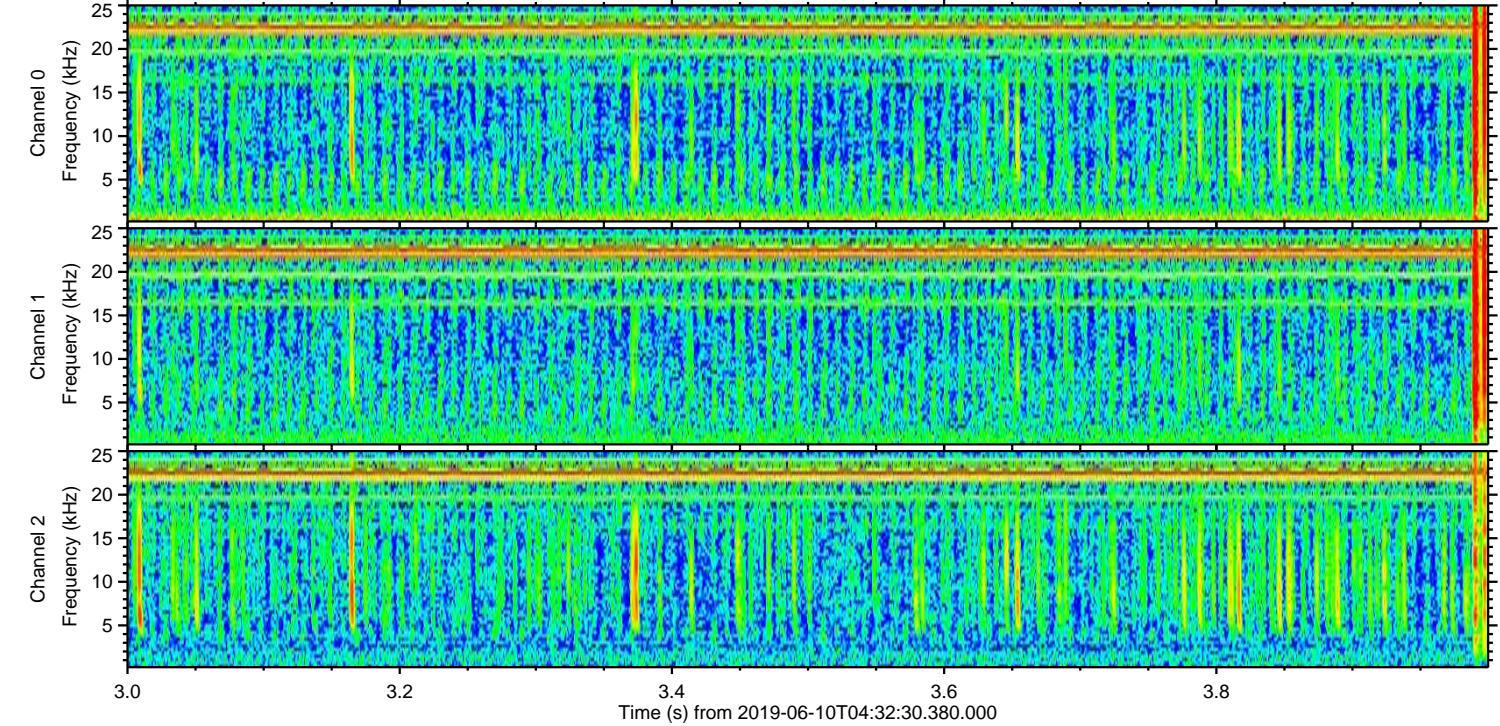
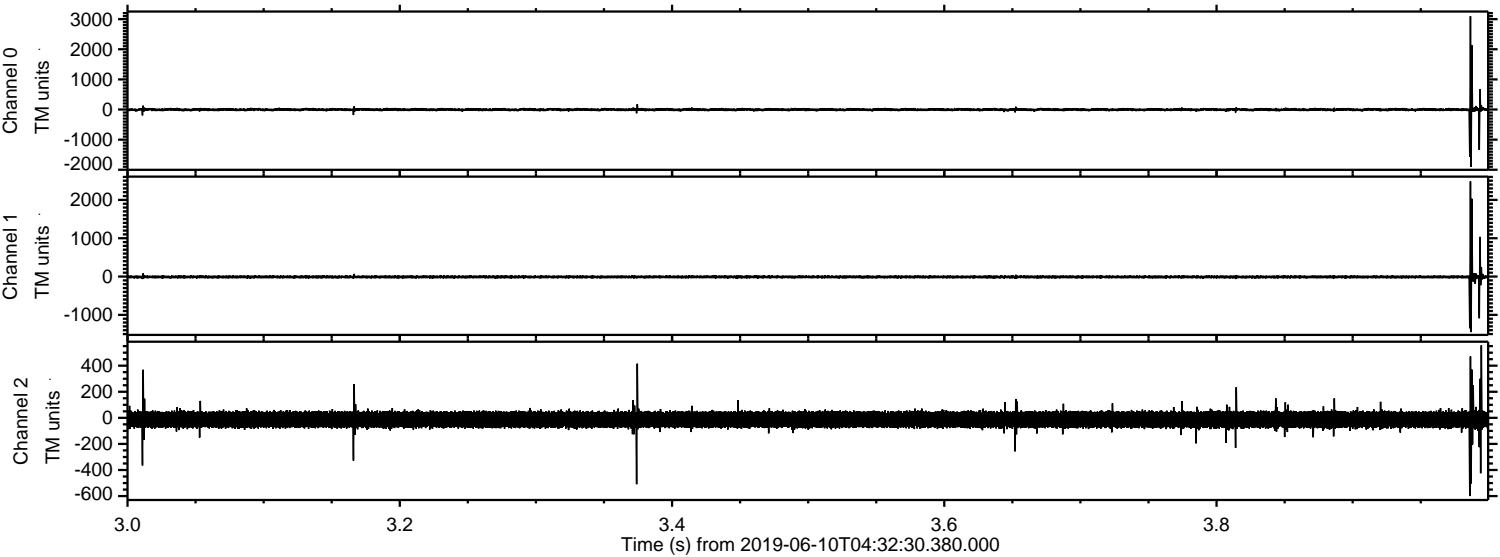
Processed Mon Jun 10 06:40:03 2019 by ELM ver.2012-10-06 from 001__elm20190610_043229__dat00.bin



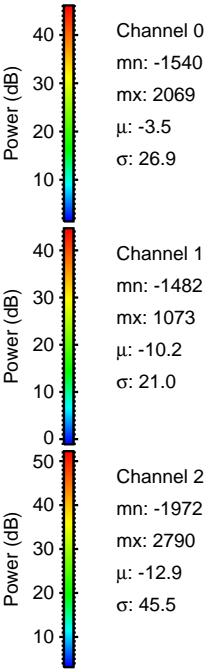
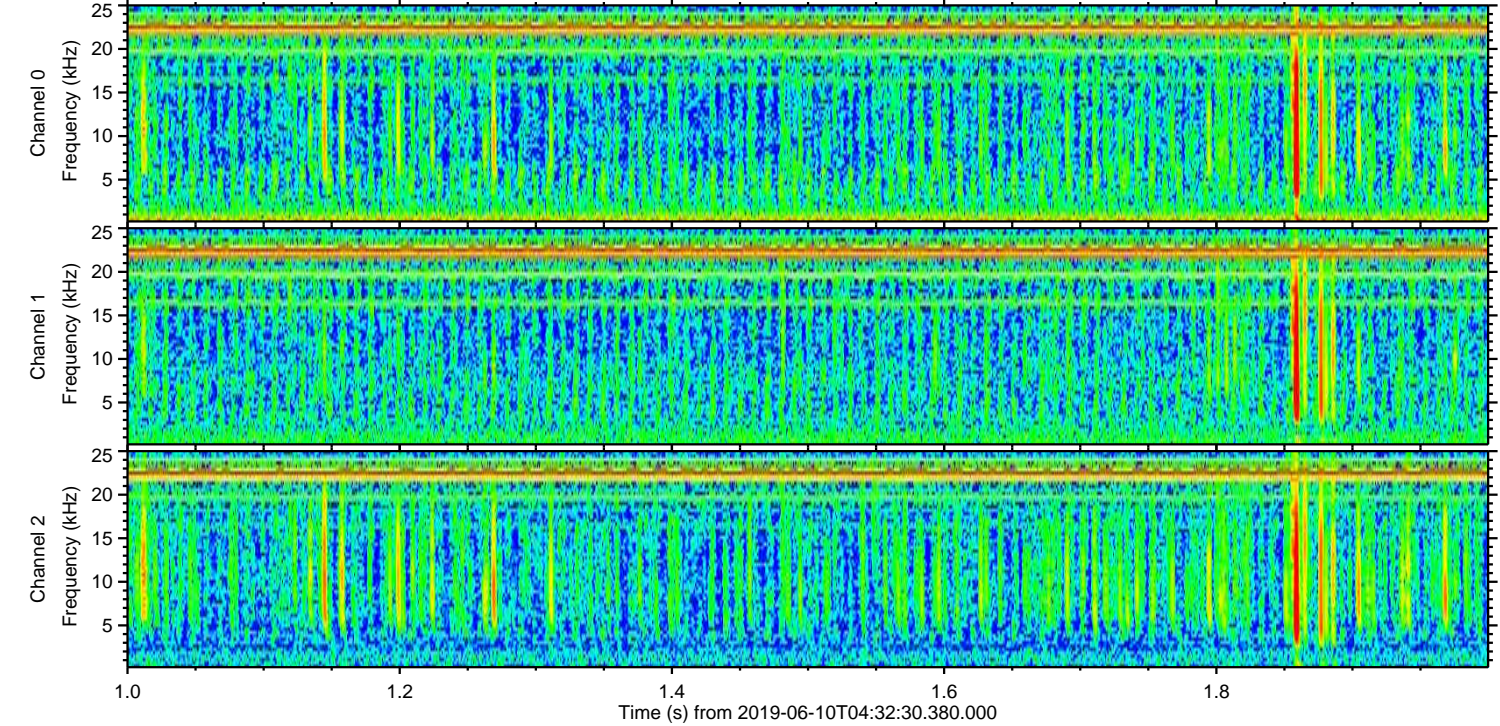
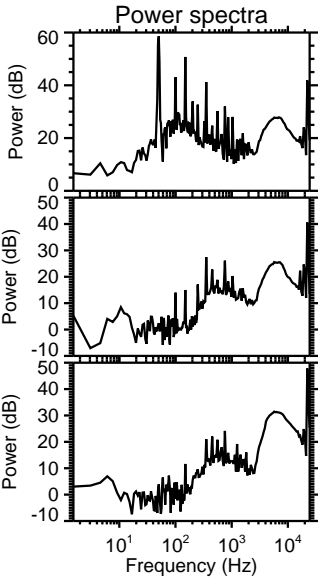
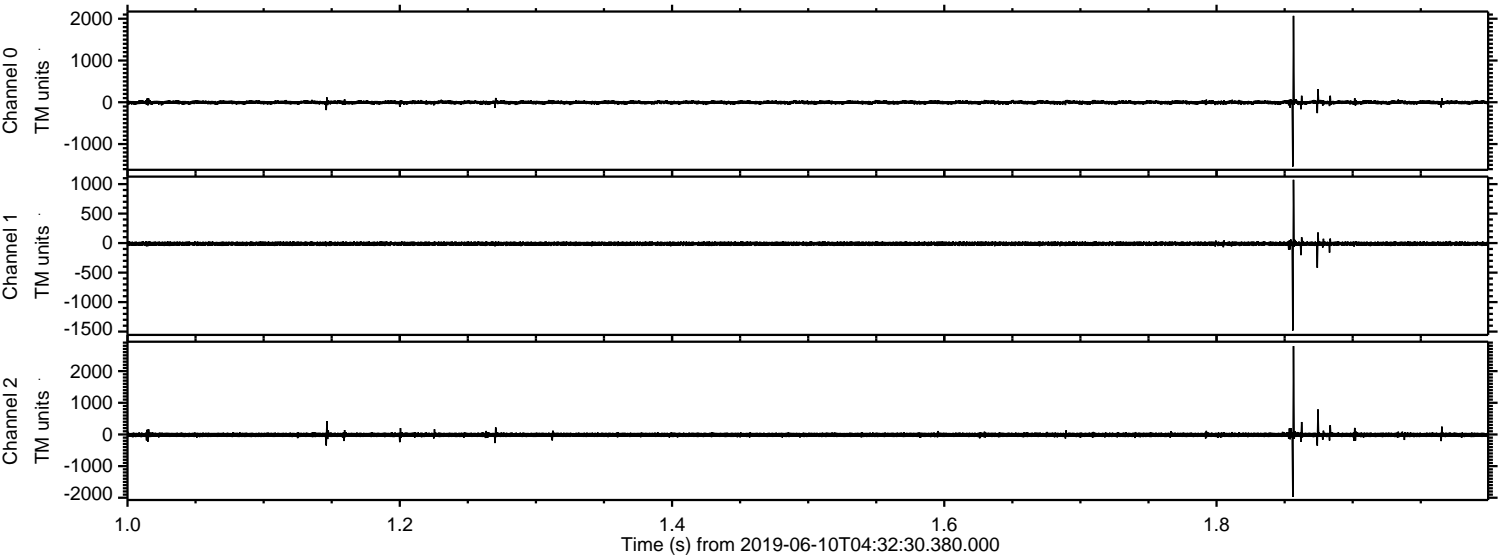
Processed Mon Jun 10 06:40:03 2019 by ELM ver.2012-10-06 from 001__elm20190610_043229__dat00.bin



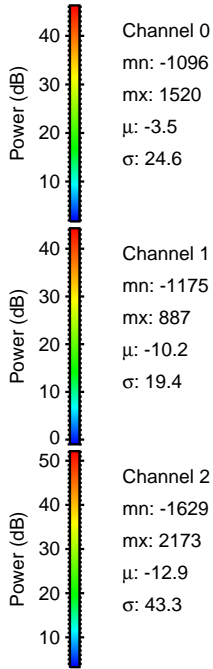
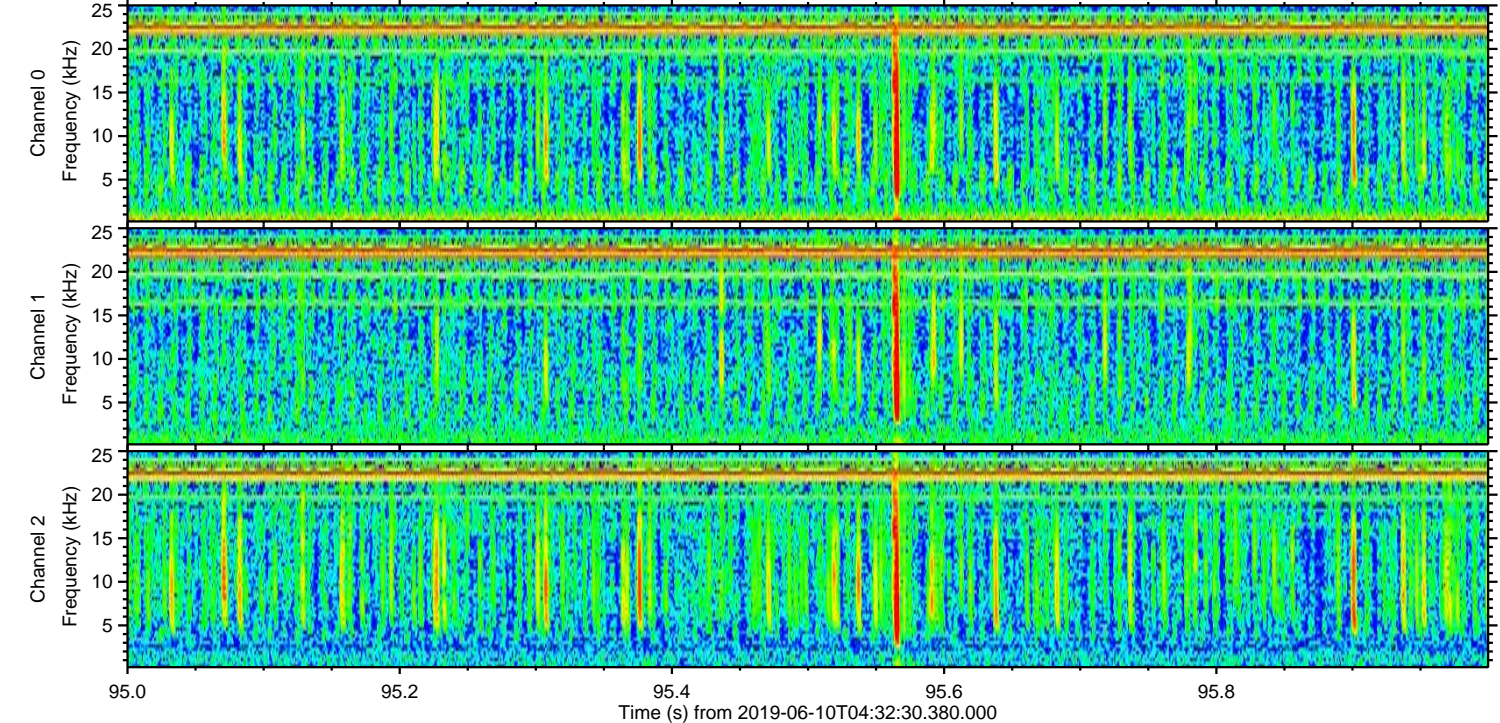
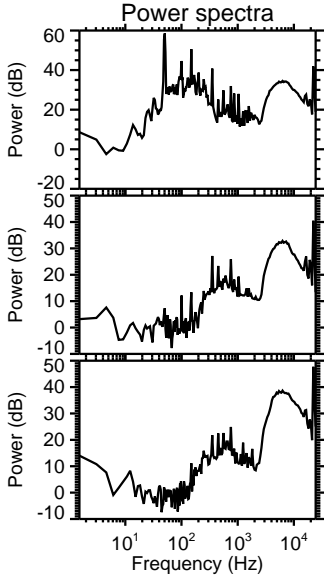
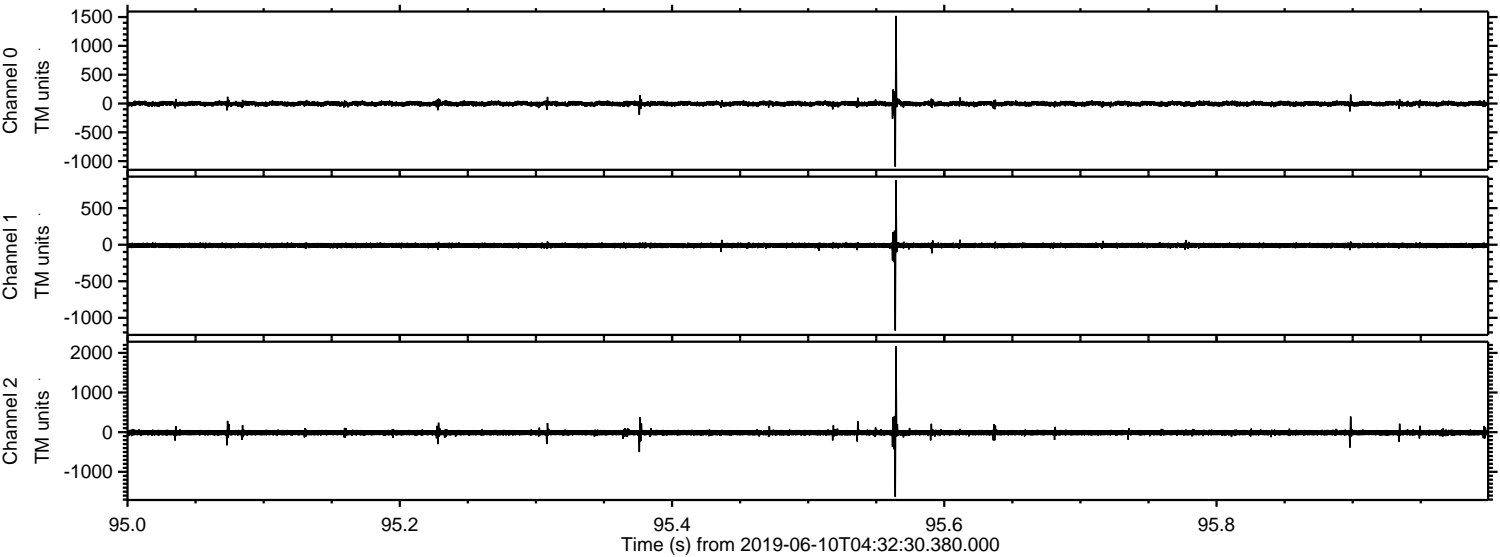
Processed Mon Jun 10 06:40:04 2019 by ELM ver.2012-10-06 from 001__elm20190610_043229__dat00.bin



Processed Mon Jun 10 06:40:05 2019 by ELM ver.2012-10-06 from 001__elm20190610_043229__dat00.bin

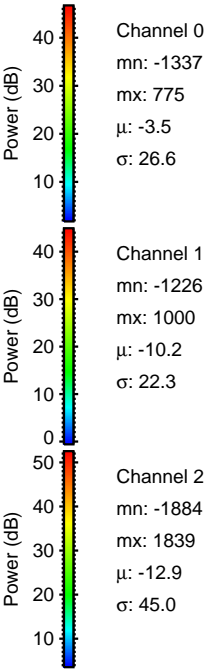
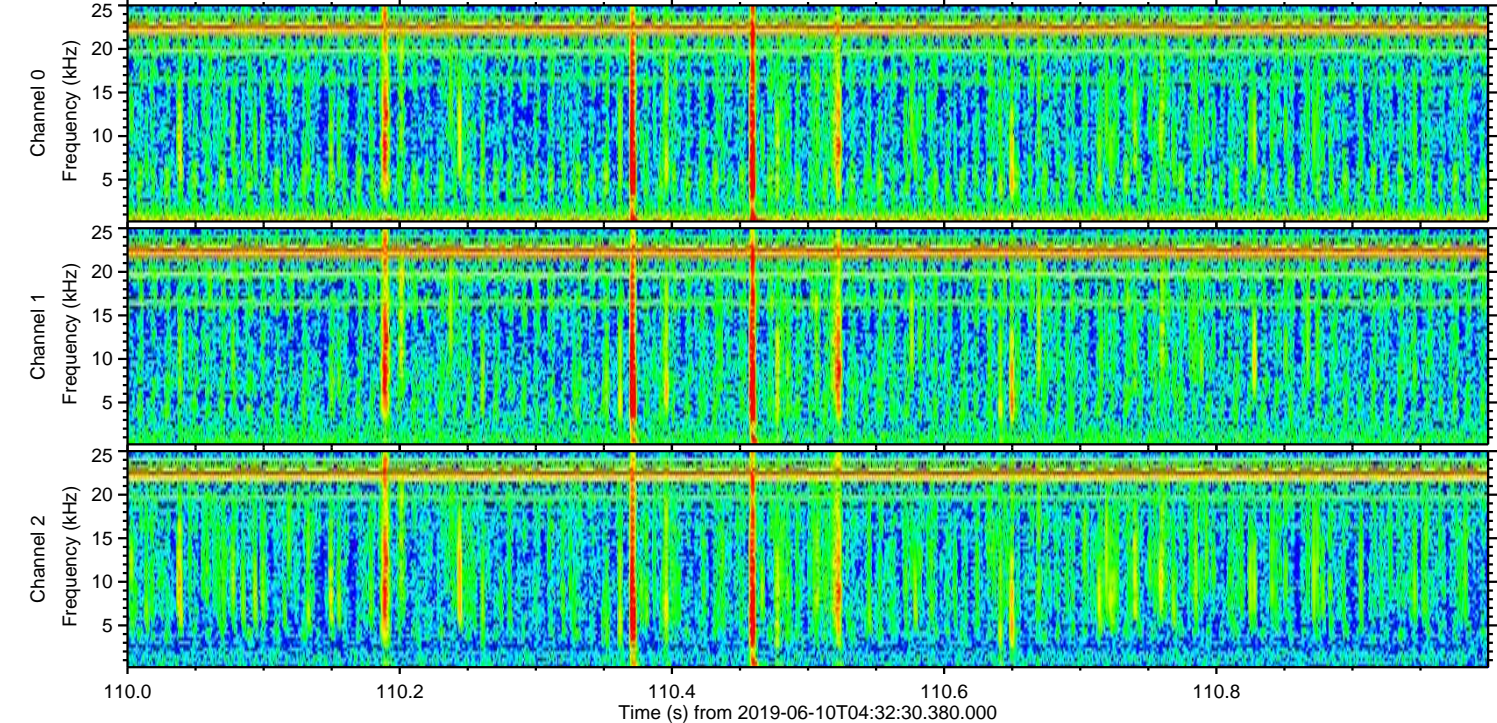
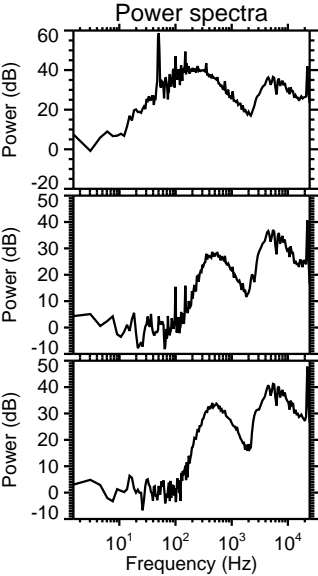
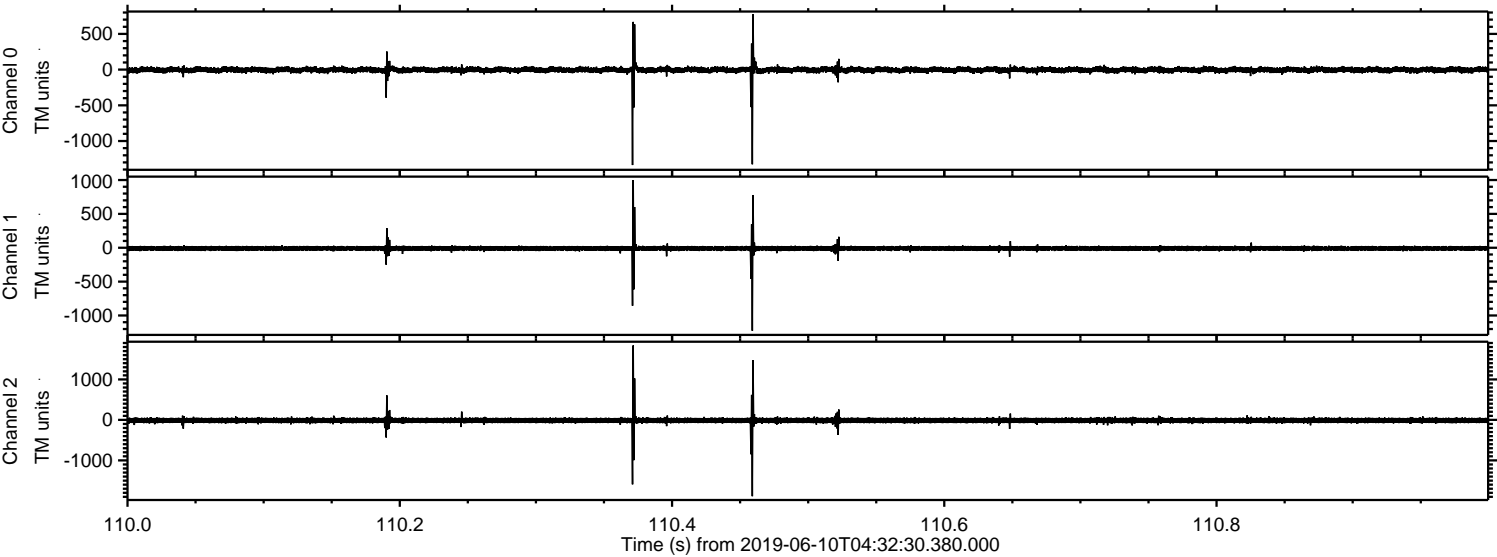


Processed Mon Jun 10 06:40:06 2019 by ELM ver.2012-10-06 from 001__elm20190610_043229__dat00.bin

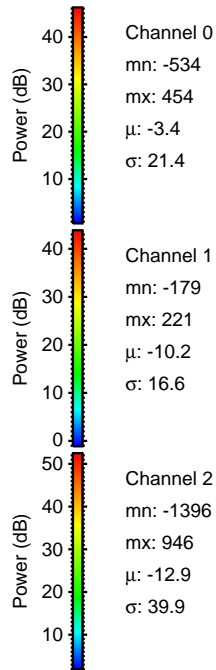
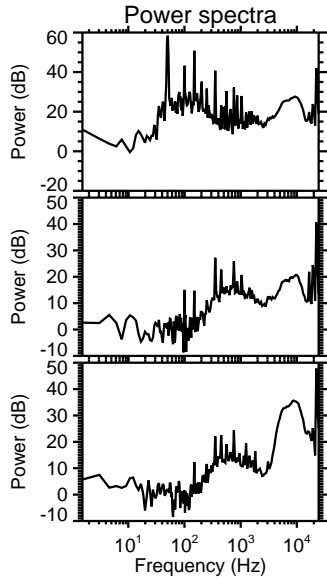
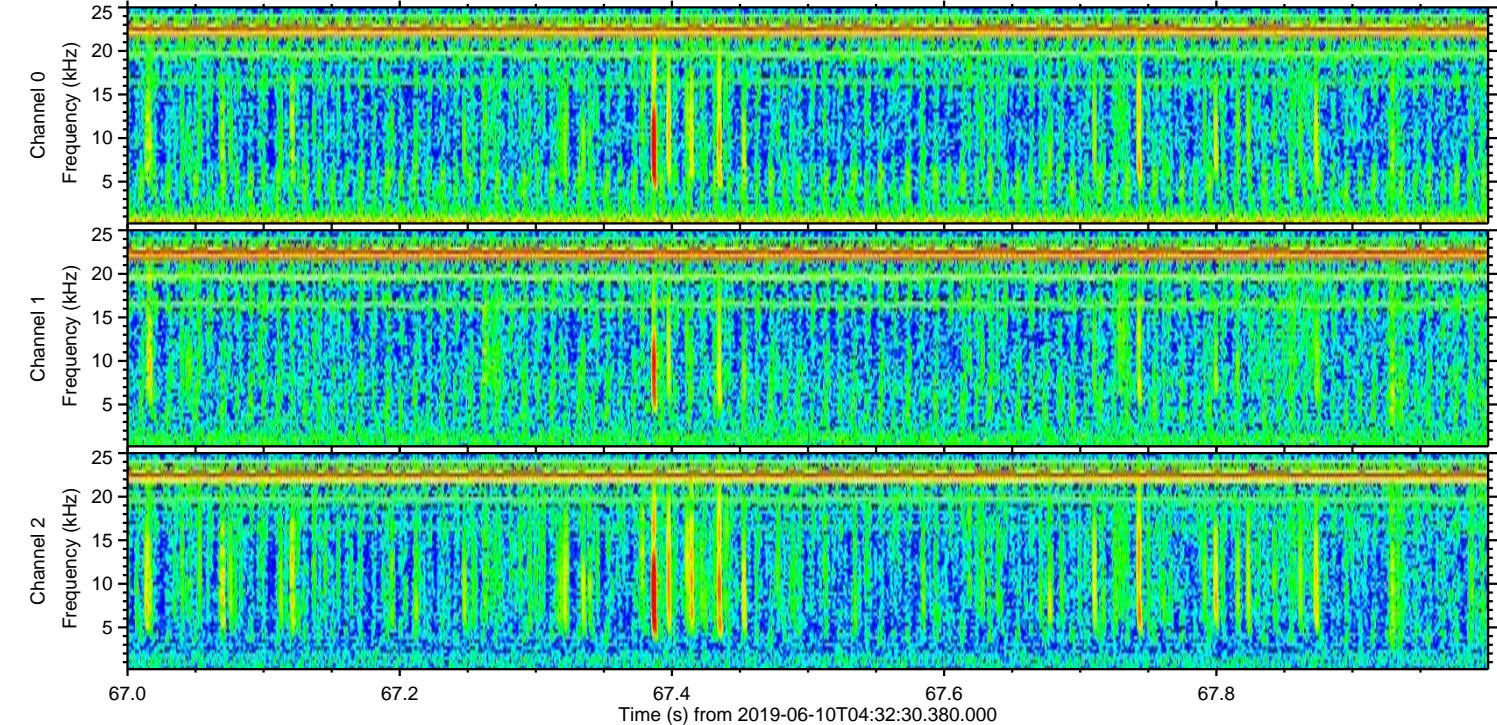
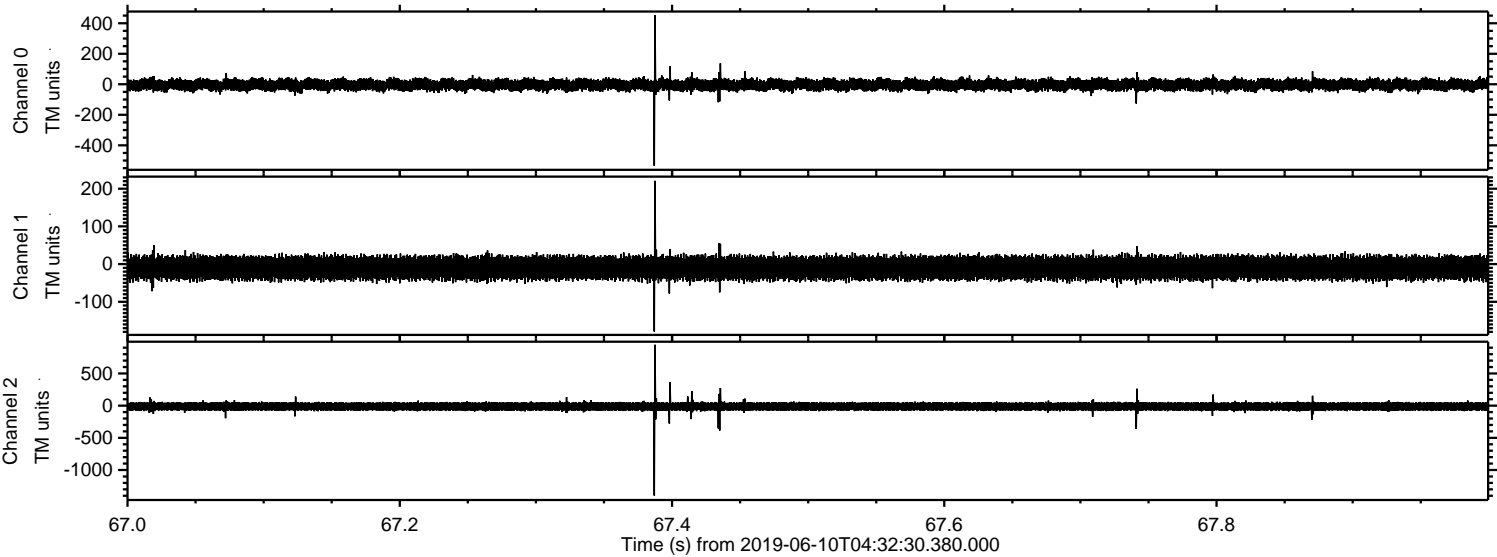


ELMAVAN 3D WAVEFORMS (Measured data sampled at 50 kHz) 50999 packets of 144 samples from 2019-06-10T04:32:30.380.000. Part 111/147

Processed Mon Jun 10 06:40:07 2019 by ELM ver.2012-10-06 from 001__elm20190610_043229__dat00.bin



Processed Mon Jun 10 06:40:08 2019 by ELM ver.2012-10-06 from 001__elm20190610_043229__dat00.bin



Channel 0
mn: -534
mx: 454
 μ : -3.4
 σ : 21.4

Channel 1
mn: -179
mx: 221
 μ : -10.2
 σ : 16.6

Channel 2
mn: -1396
mx: 946
 μ : -12.9
 σ : 39.9

Processed Mon Jun 10 06:40:09 2019 by ELM ver.2012-10-06 from 001_elm20190610_043229__dat00.bin

