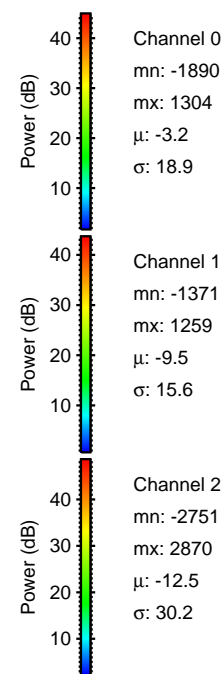
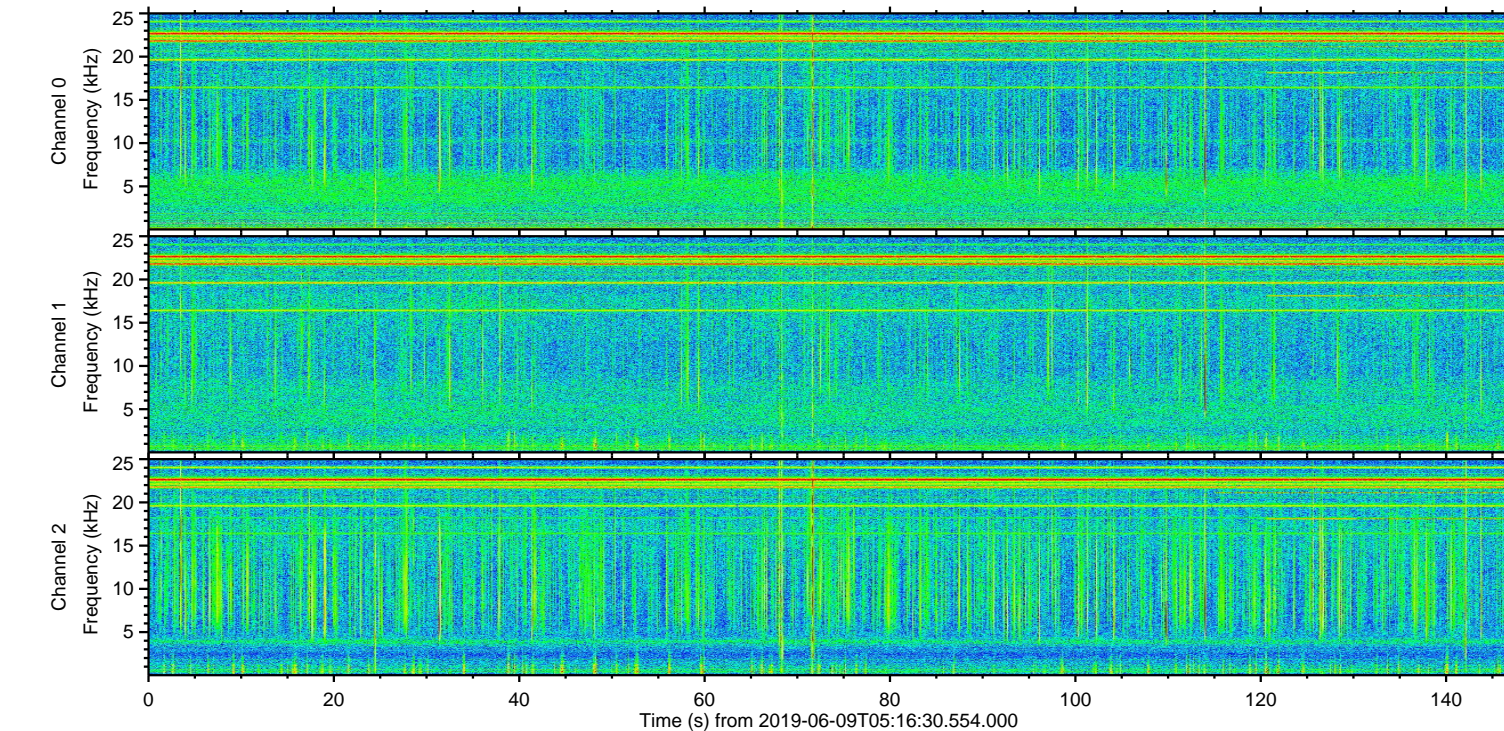
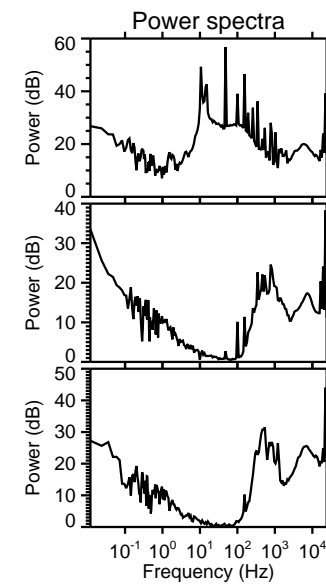
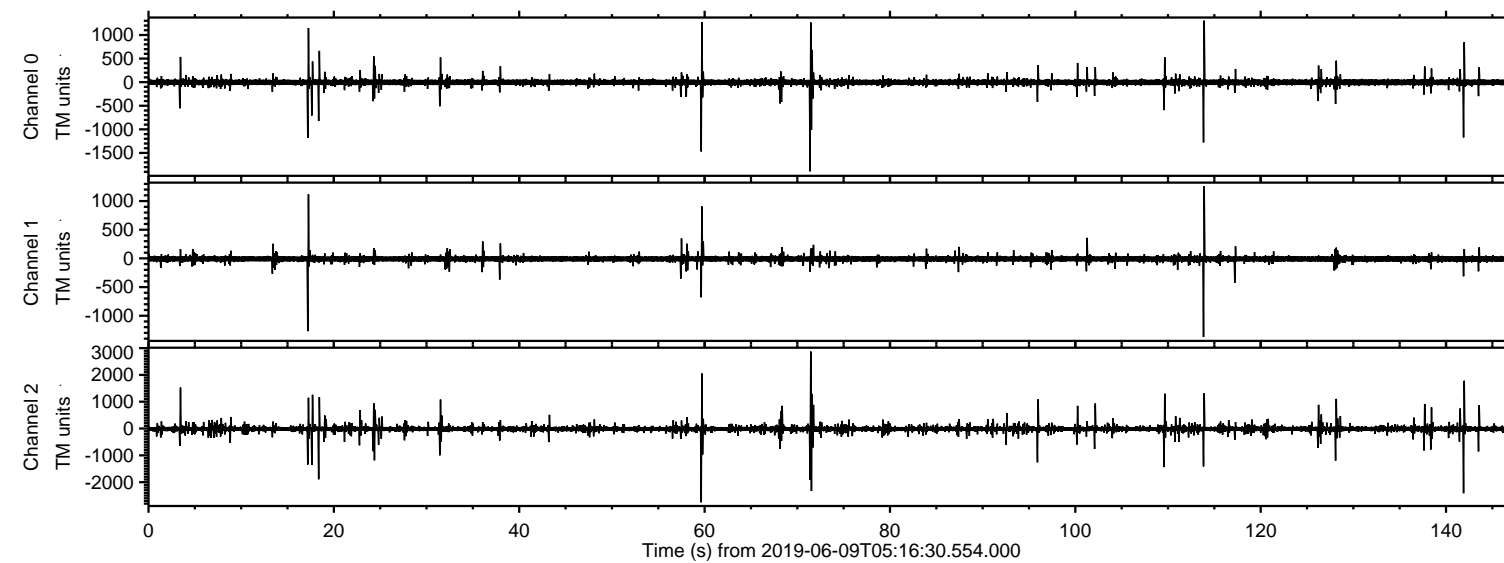


# ELMAVAN 3D WAVEFORMS (Measured data sampled at 50 kHz) 51000 packets of 144 samples from 2019-06-09T05:16:30.554.000.

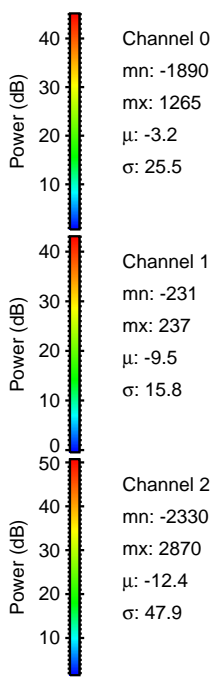
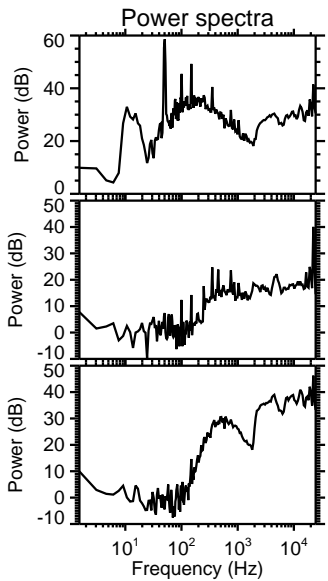
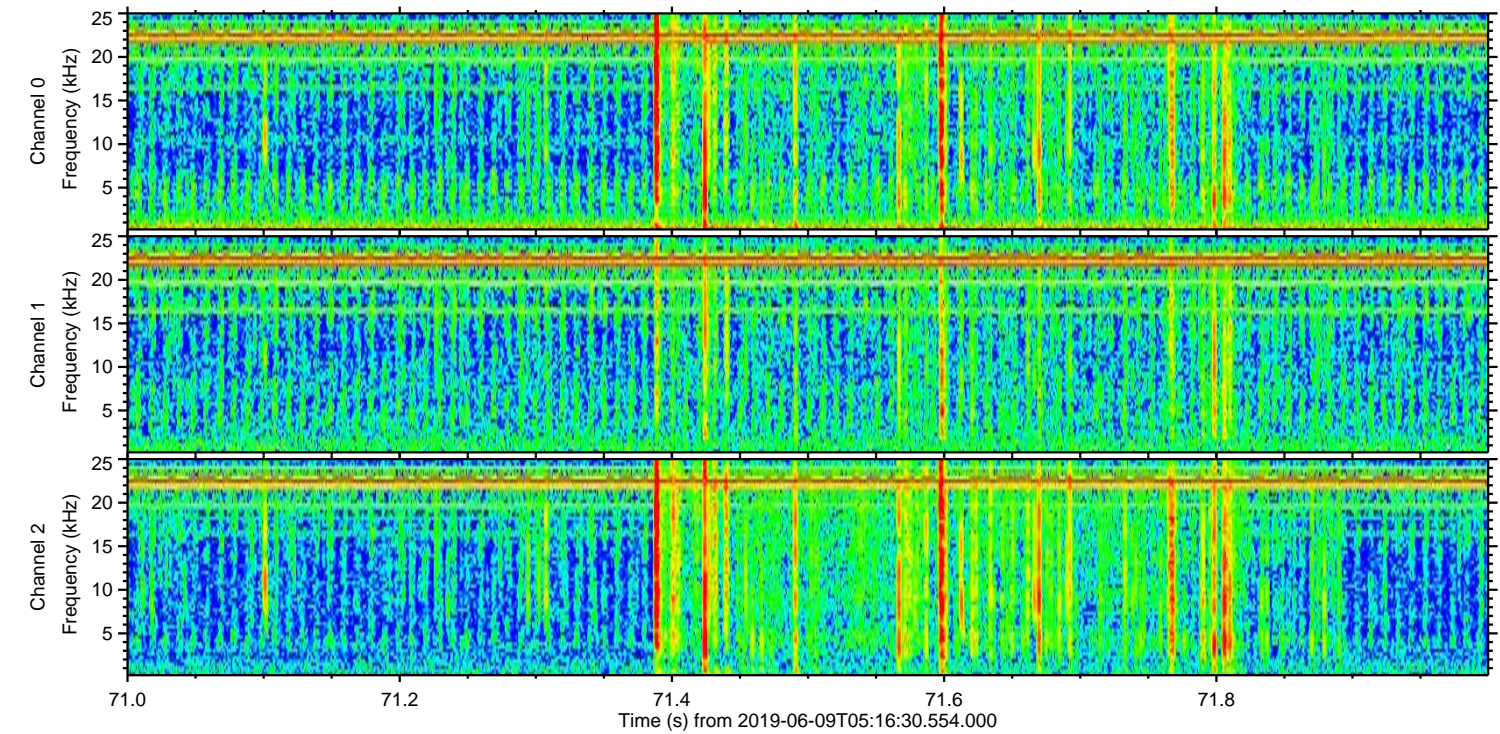
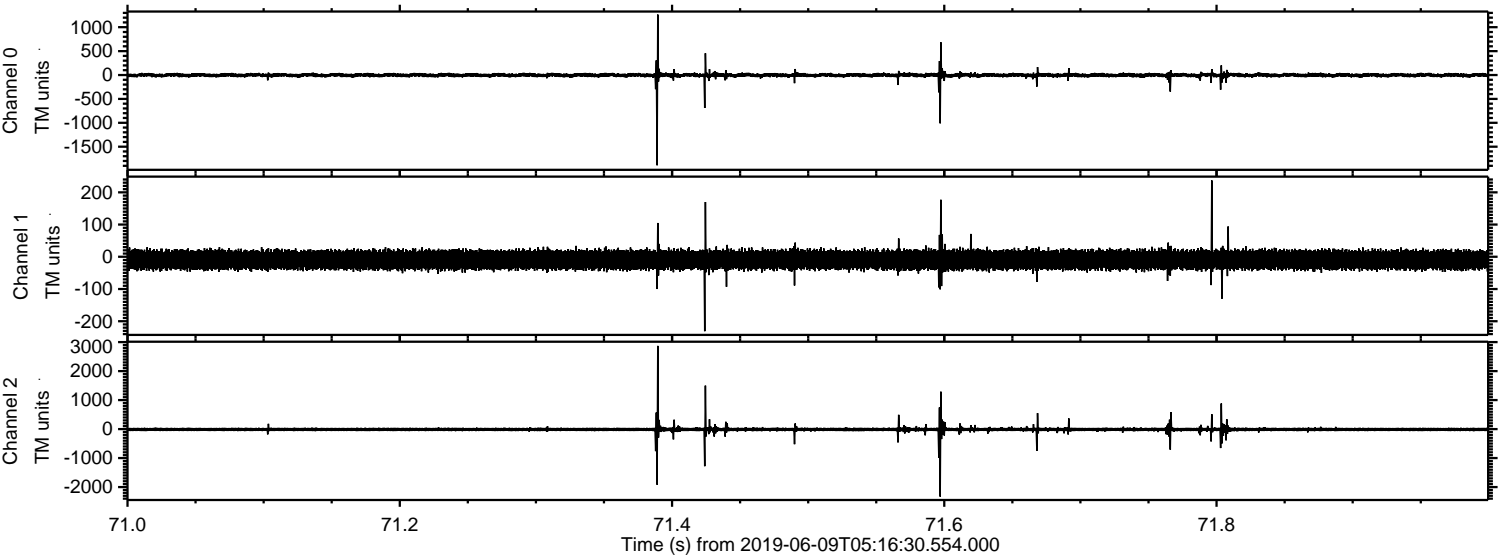
Processed Sun Jun 9 07:23:53 2019 by ELM ver.2012-10-06 from 001\_\_elm20190609\_051629\_\_dat00.bin





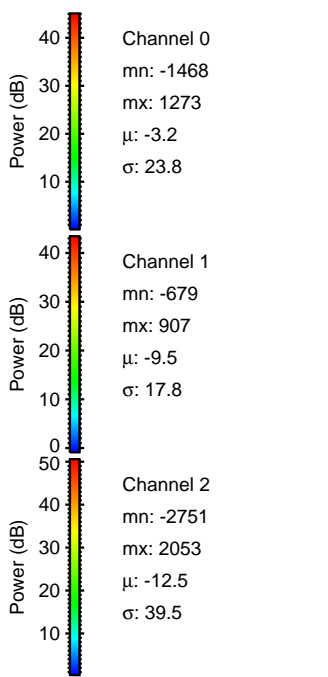
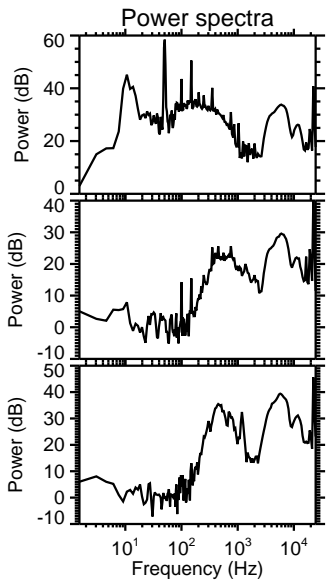
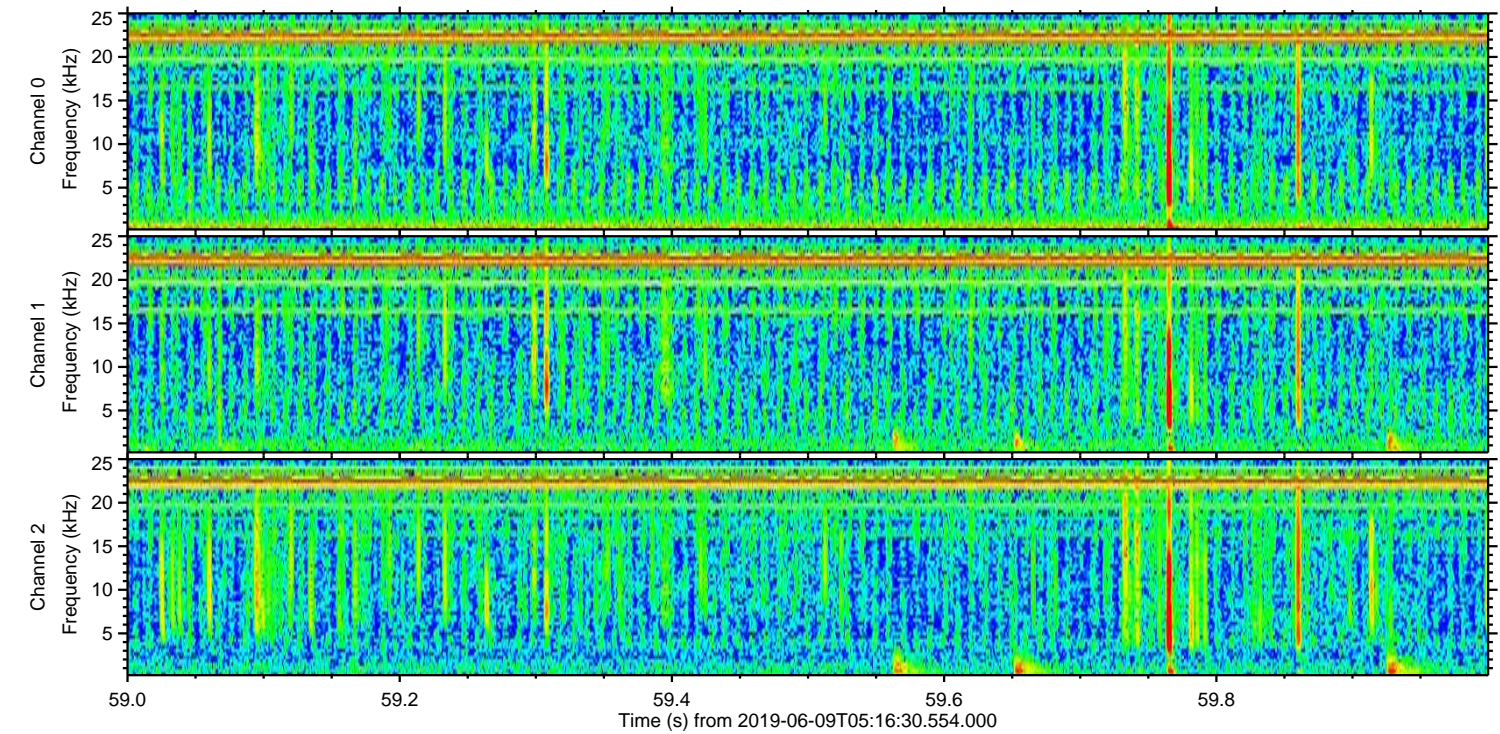
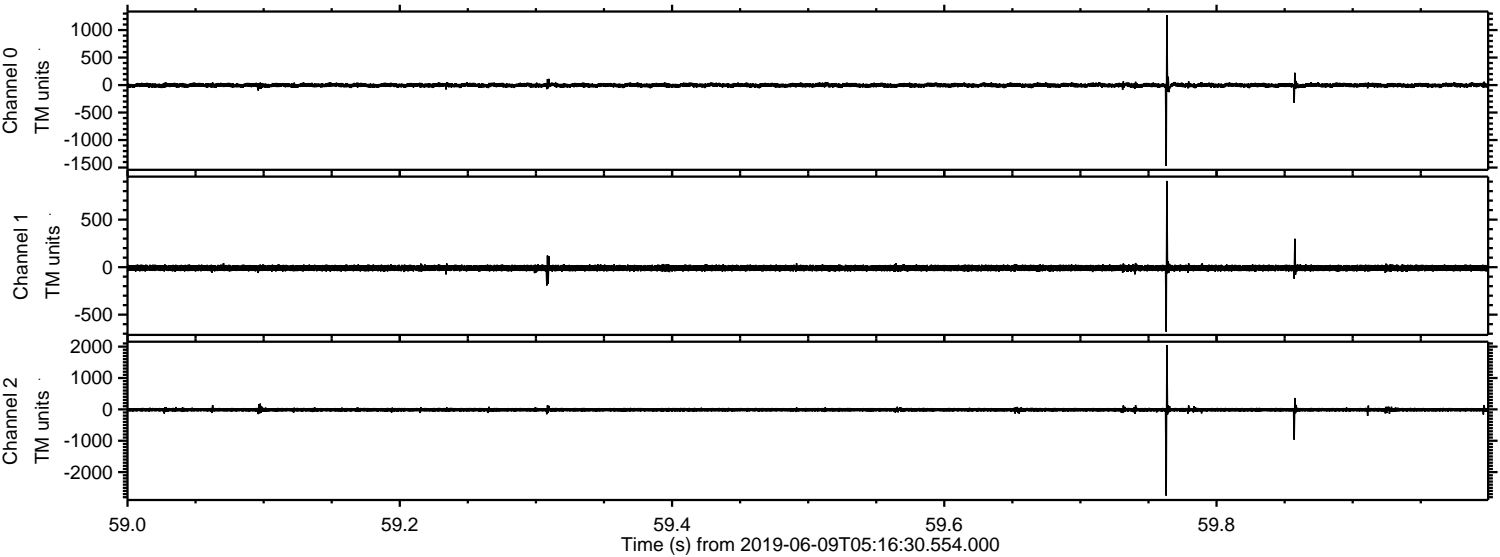
ELMAVAN 3D WAVEFORMS (Measured data sampled at 50 kHz) 51000 packets of 144 samples from 2019-06-09T05:16:30.554.000. Part 72/147

Processed Sun Jun 9 07:24:00 2019 by ELM ver.2012-10-06 from 001\_\_elm20190609\_051629\_\_dat00.bin





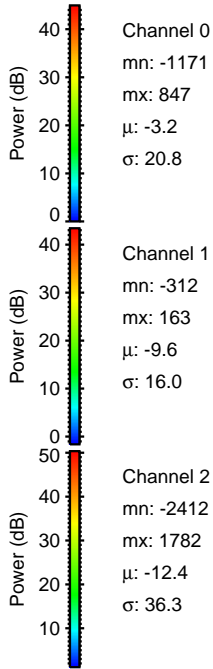
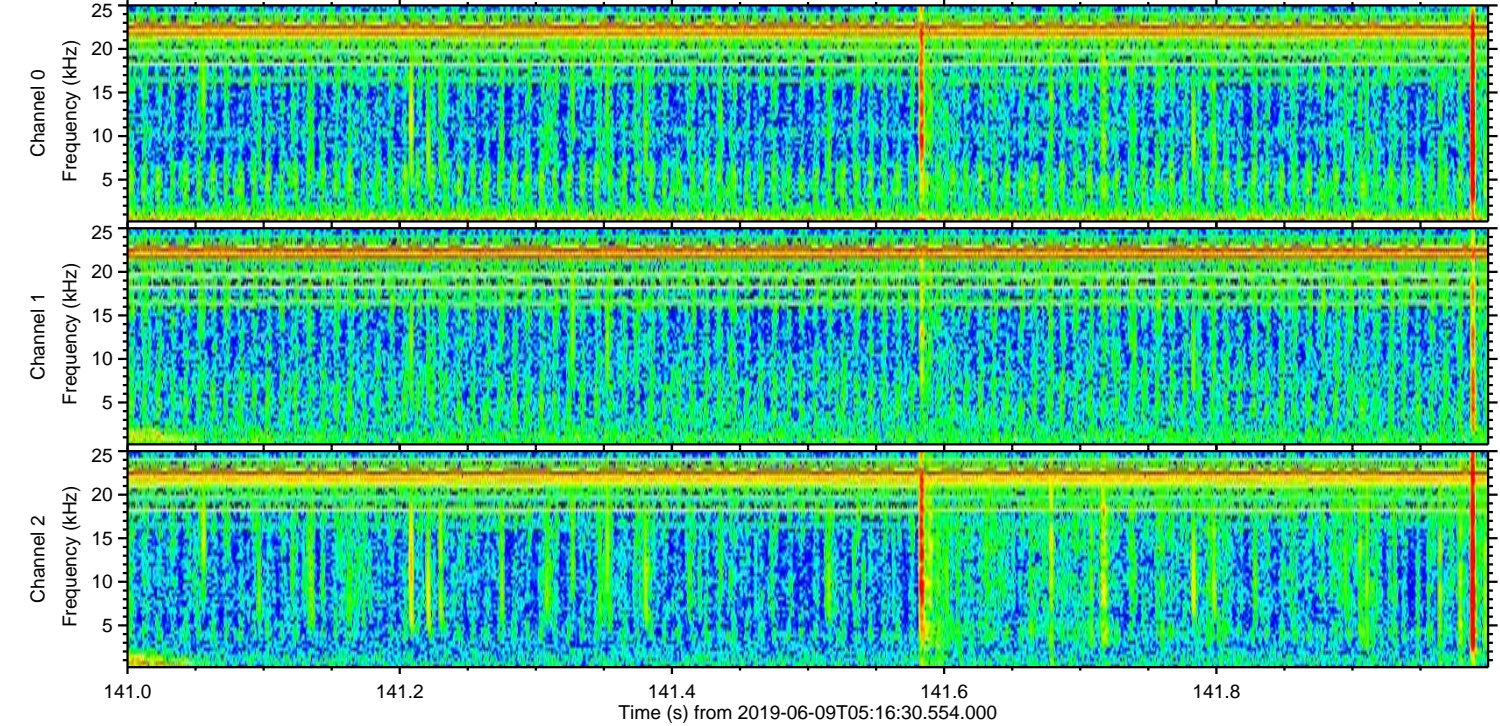
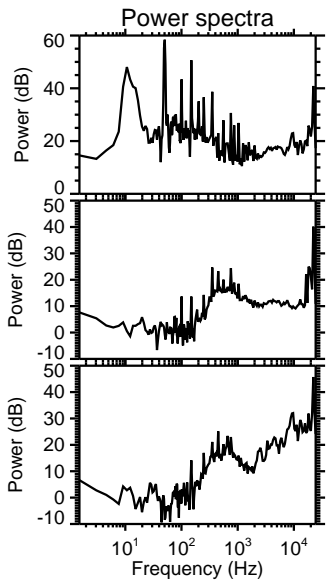
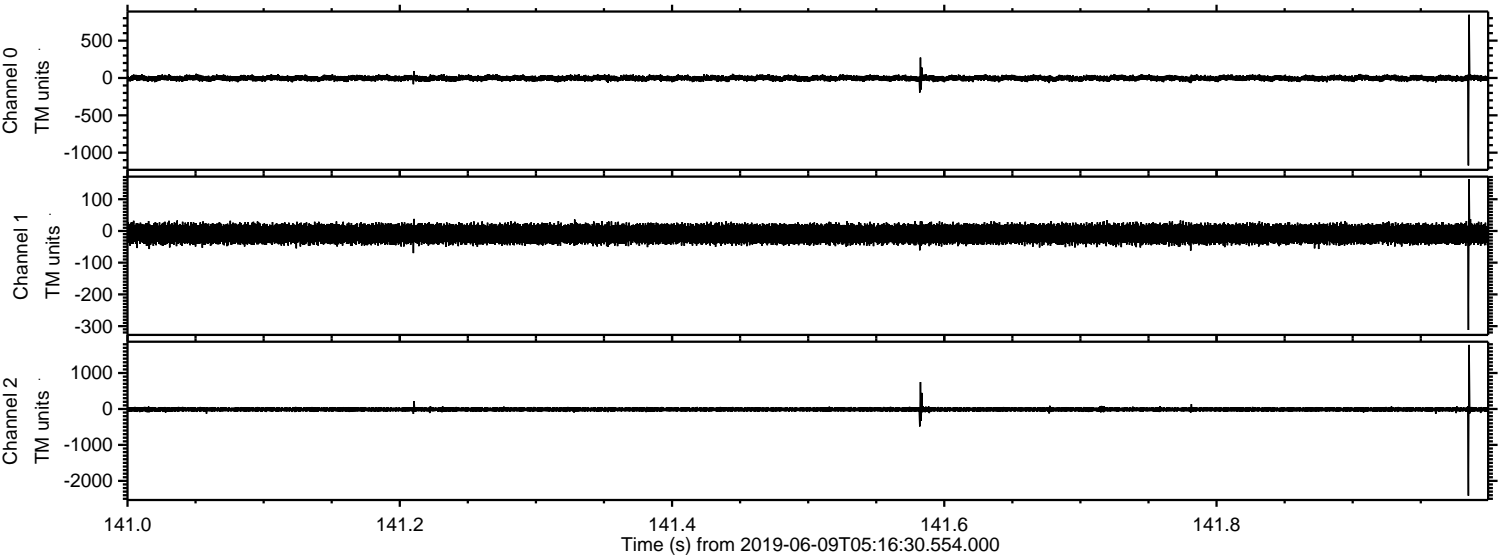
Processed Sun Jun 9 07:24:00 2019 by ELM ver.2012-10-06 from 001\_\_elm20190609\_051629\_\_dat00.bin





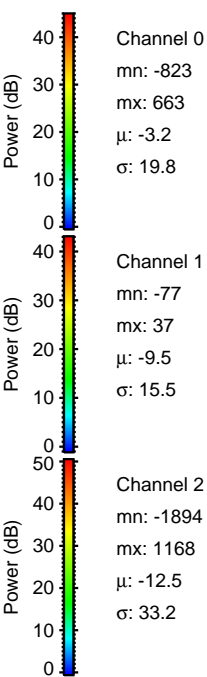
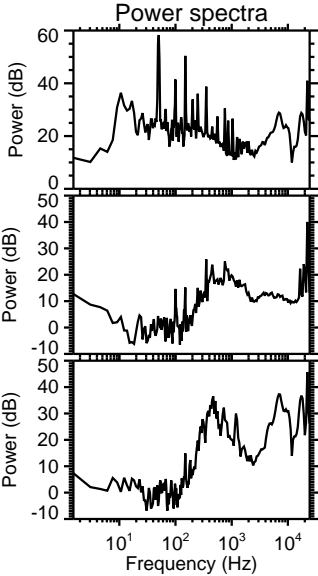
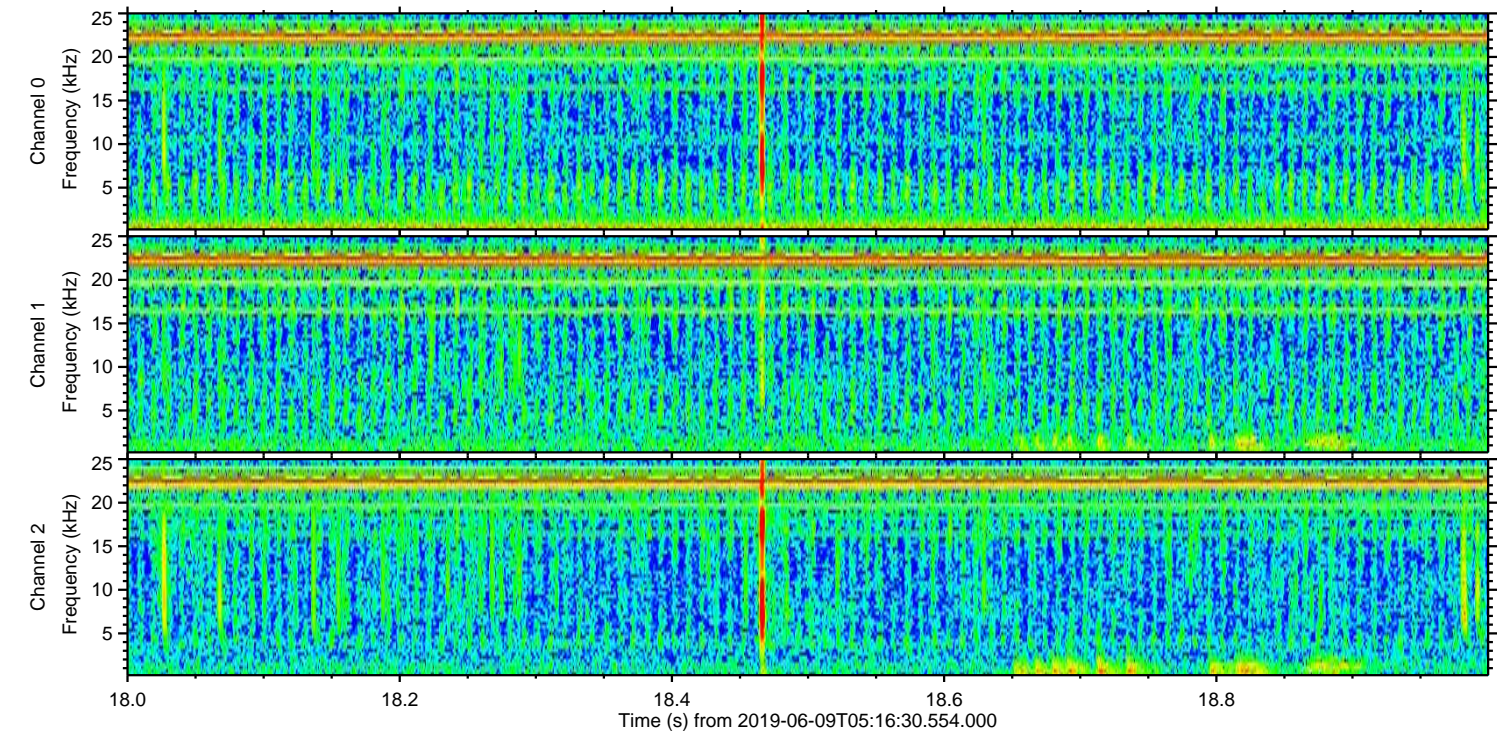
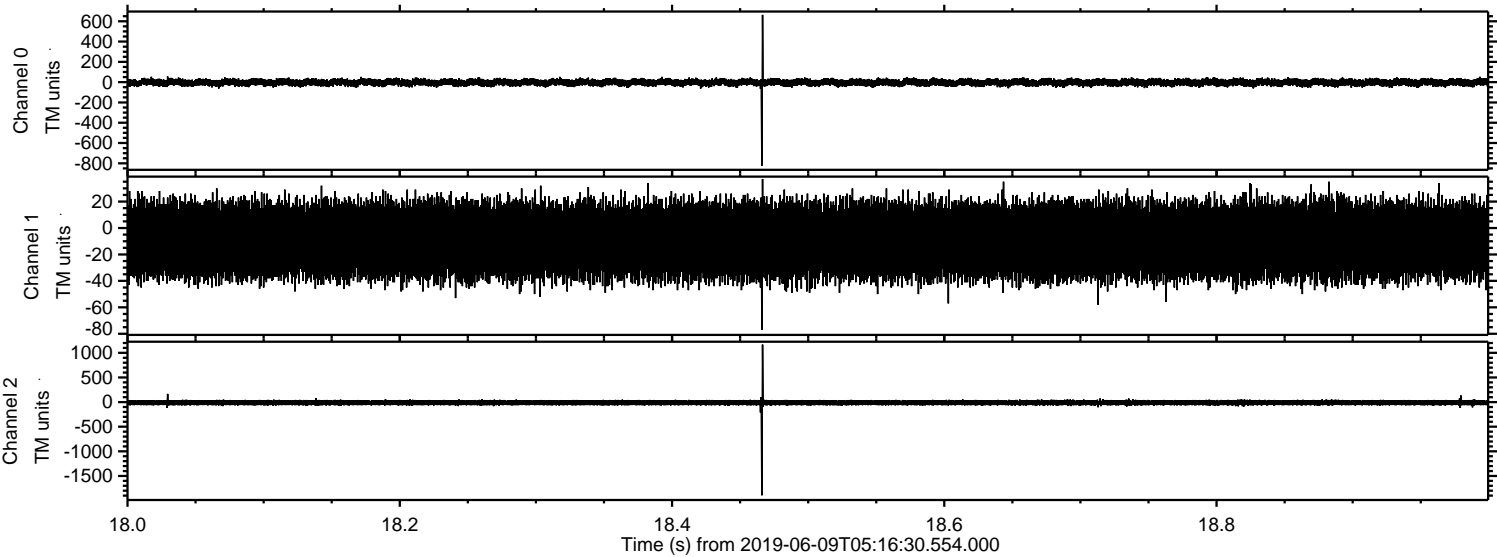
ELMAVAN 3D WAVEFORMS (Measured data sampled at 50 kHz) 51000 packets of 144 samples from 2019-06-09T05:16:30.554.000. Part 142/147

Processed Sun Jun 9 07:24:01 2019 by ELM ver.2012-10-06 from 001\_\_elm20190609\_051629\_\_dat00.bin



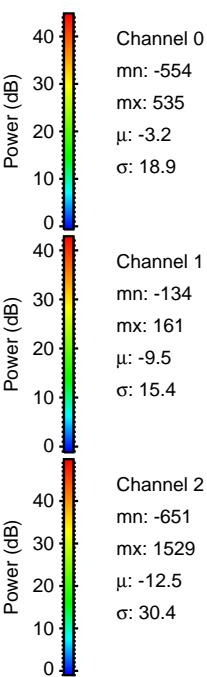
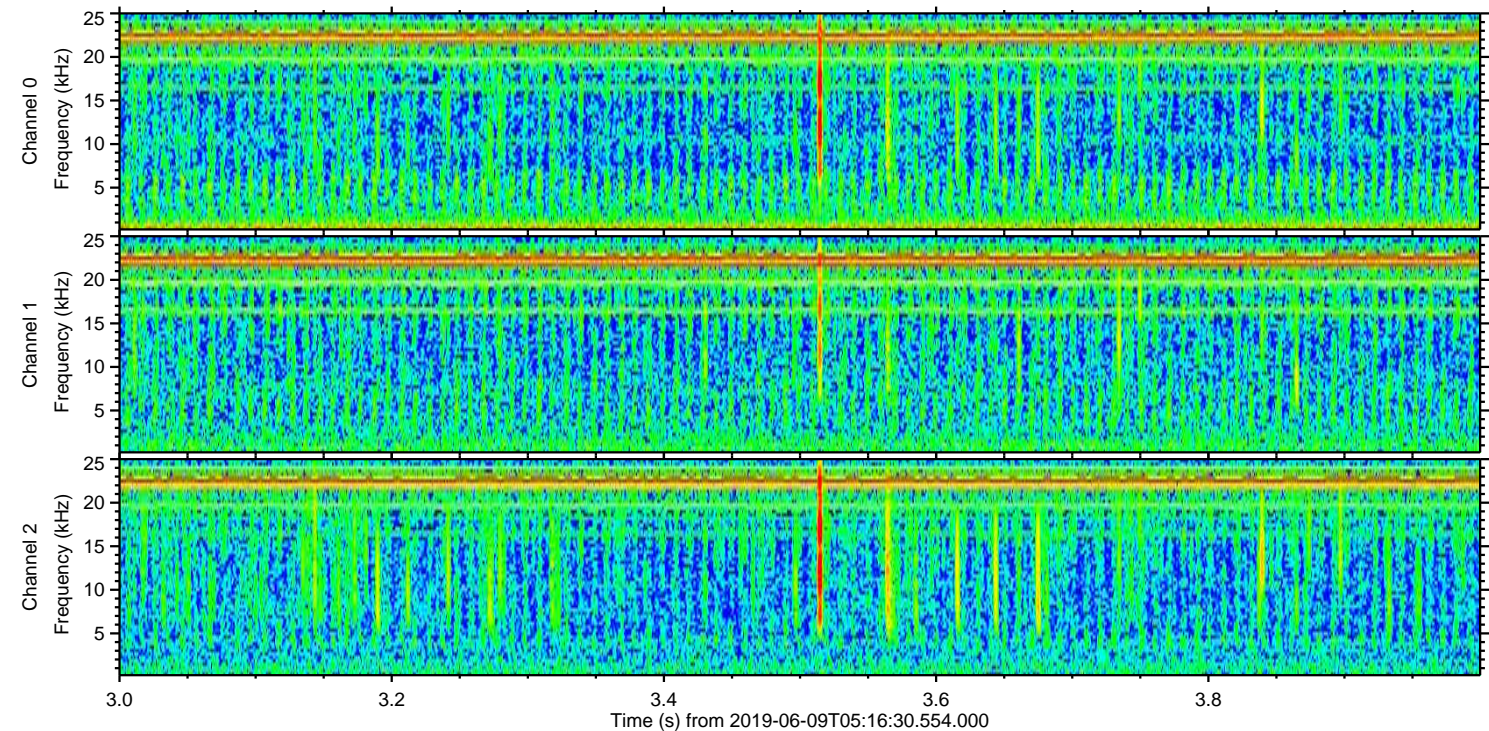
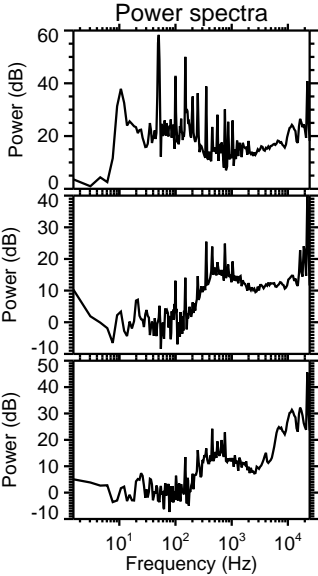
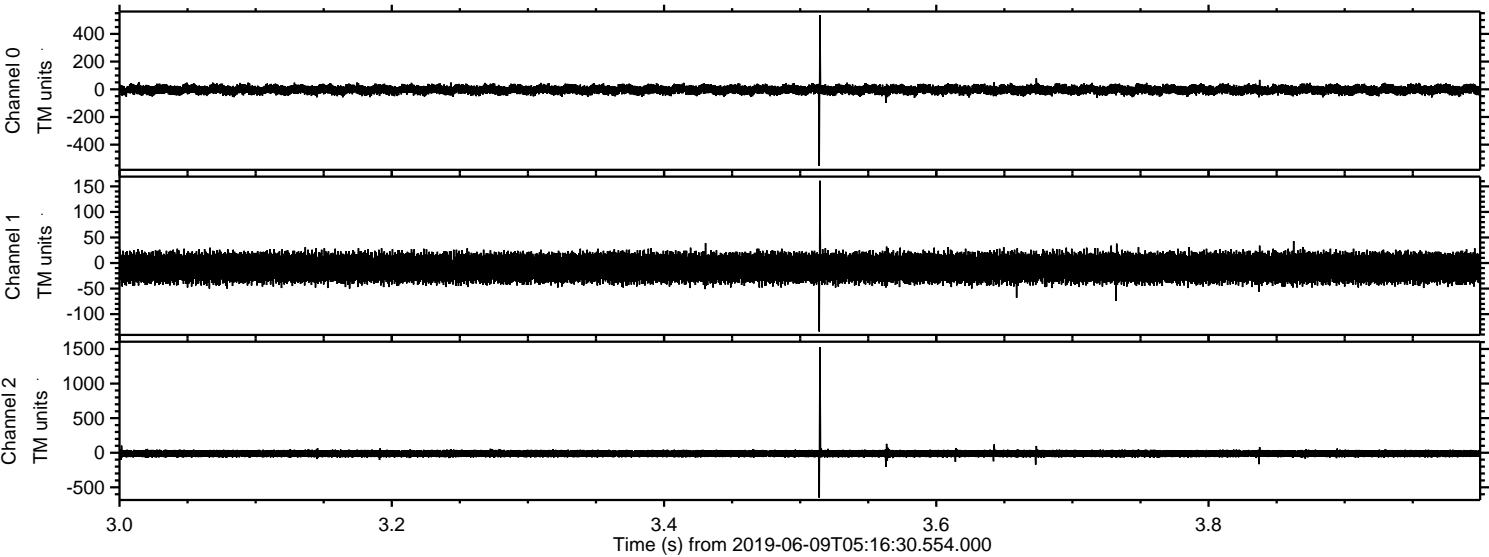


Processed Sun Jun 9 07:24:02 2019 by ELM ver.2012-10-06 from 001\_\_elm20190609\_051629\_\_dat00.bin





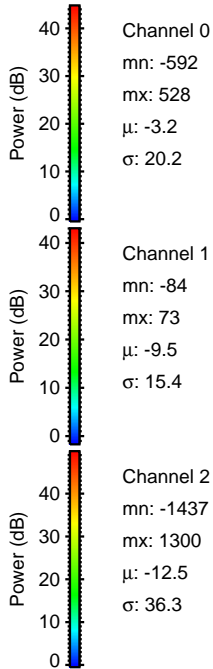
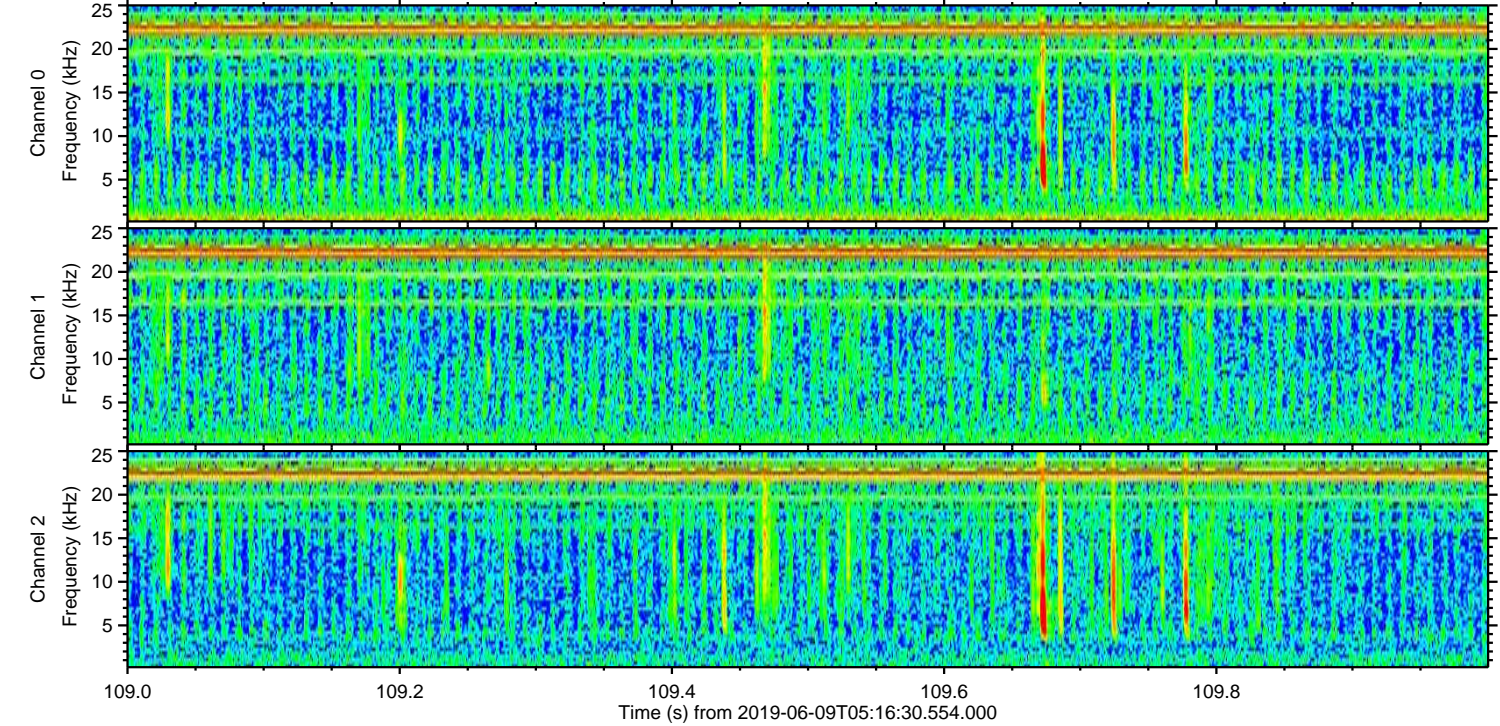
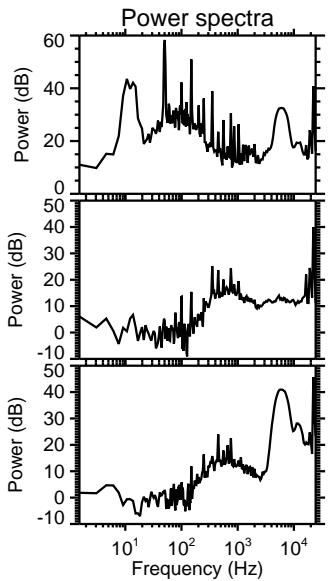
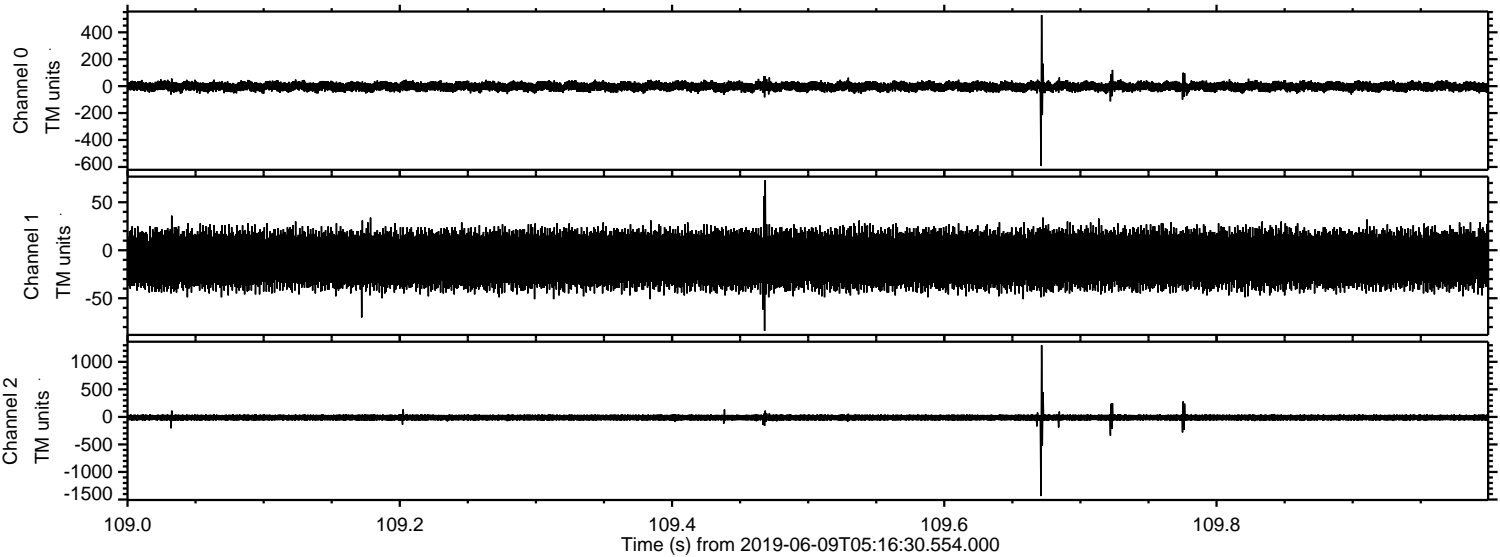
Processed Sun Jun 9 07:24:02 2019 by ELM ver.2012-10-06 from 001\_\_elm20190609\_051629\_\_dat00.bin





ELMAVAN 3D WAVEFORMS (Measured data sampled at 50 kHz) 51000 packets of 144 samples from 2019-06-09T05:16:30.554.000. Part 110/147

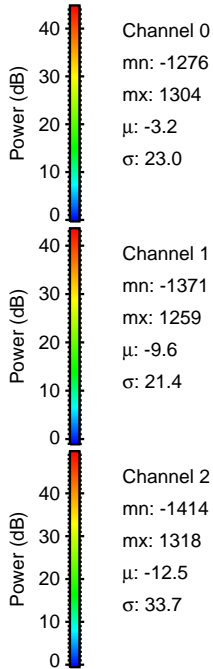
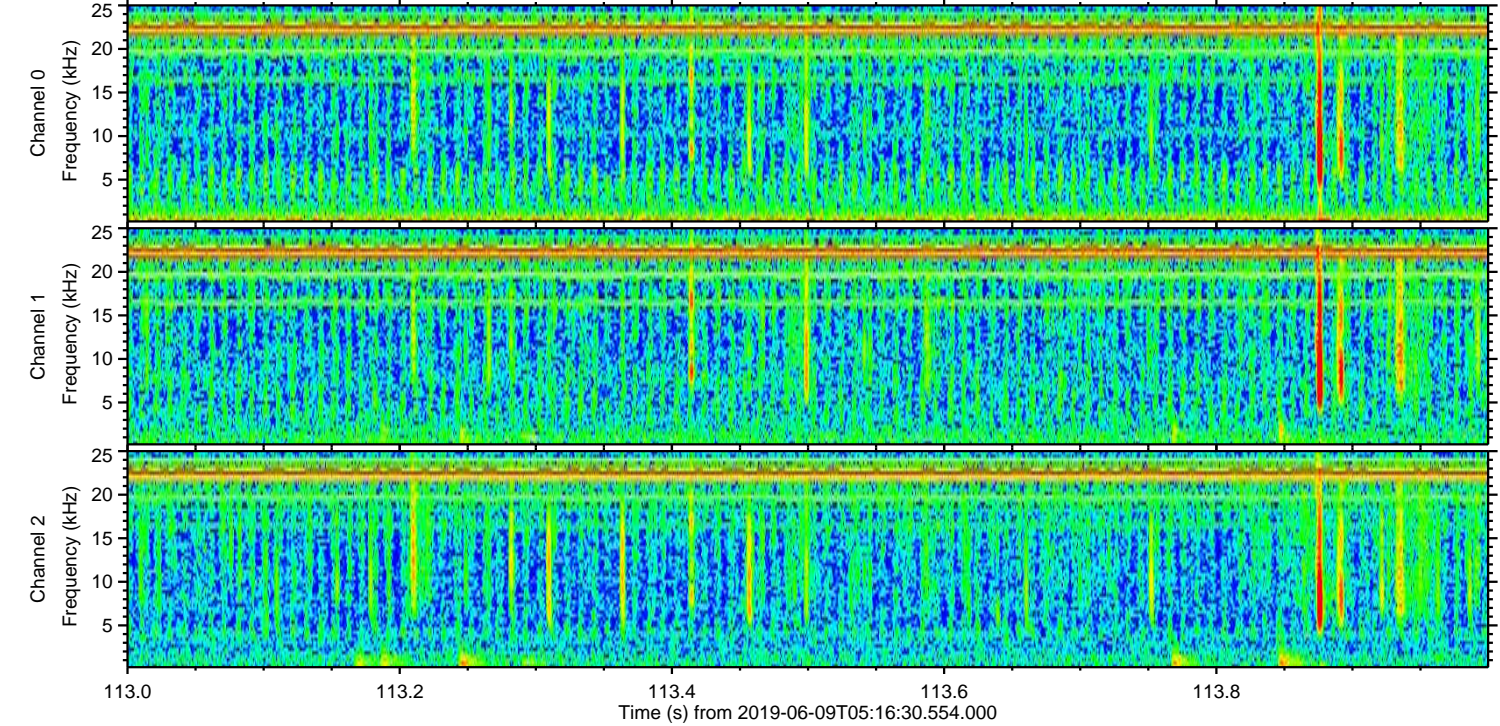
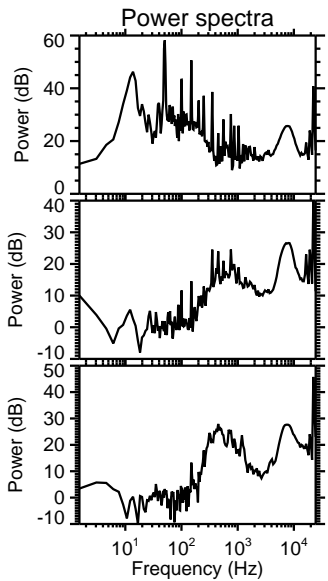
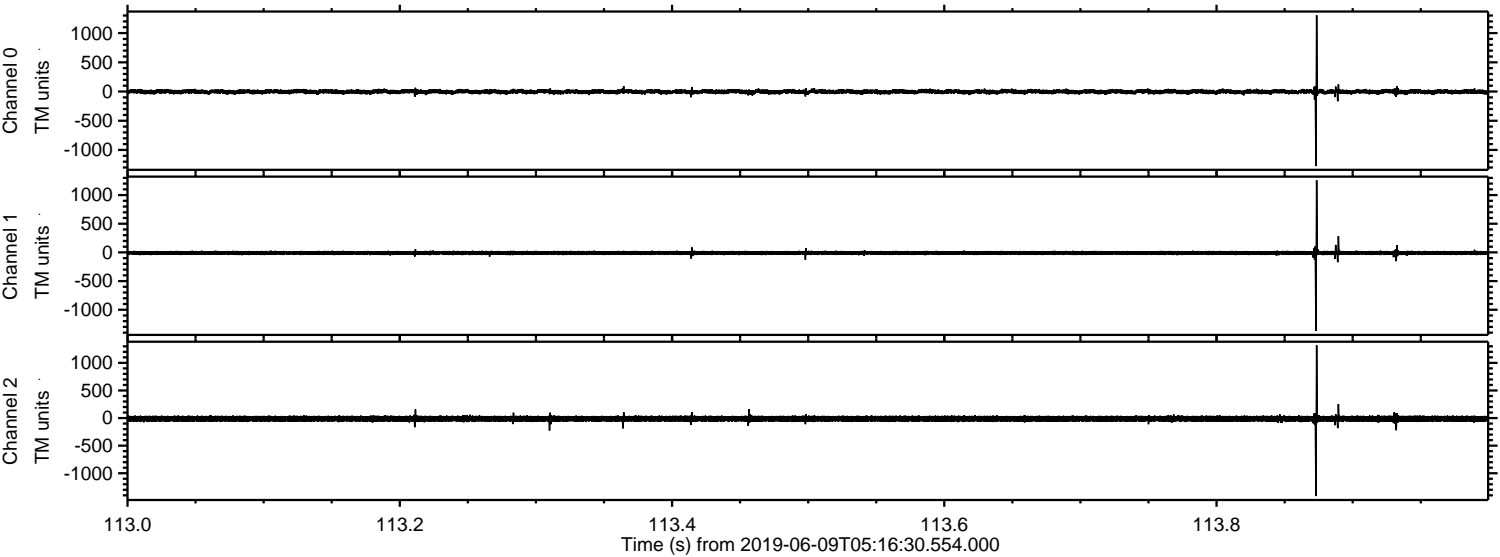
Processed Sun Jun 9 07:24:03 2019 by ELM ver.2012-10-06 from 001\_\_elm20190609\_051629\_\_dat00.bin





ELMAVAN 3D WAVEFORMS (Measured data sampled at 50 kHz) 51000 packets of 144 samples from 2019-06-09T05:16:30.554.000. Part 114/147

Processed Sun Jun 9 07:24:04 2019 by ELM ver.2012-10-06 from 001\_\_elm20190609\_051629\_\_dat00.bin



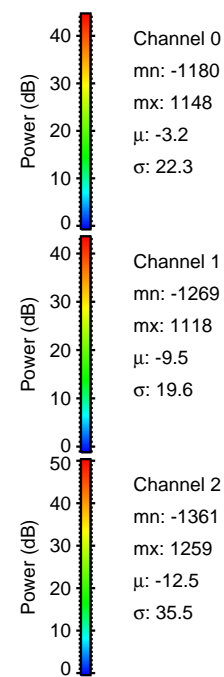
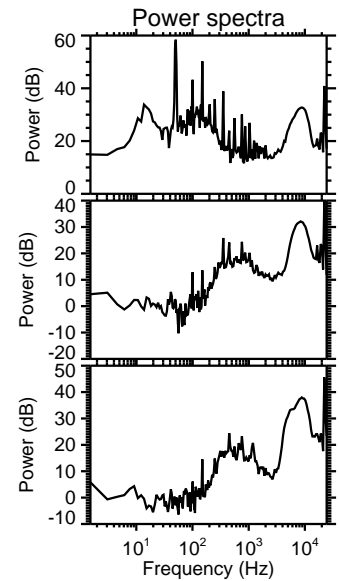
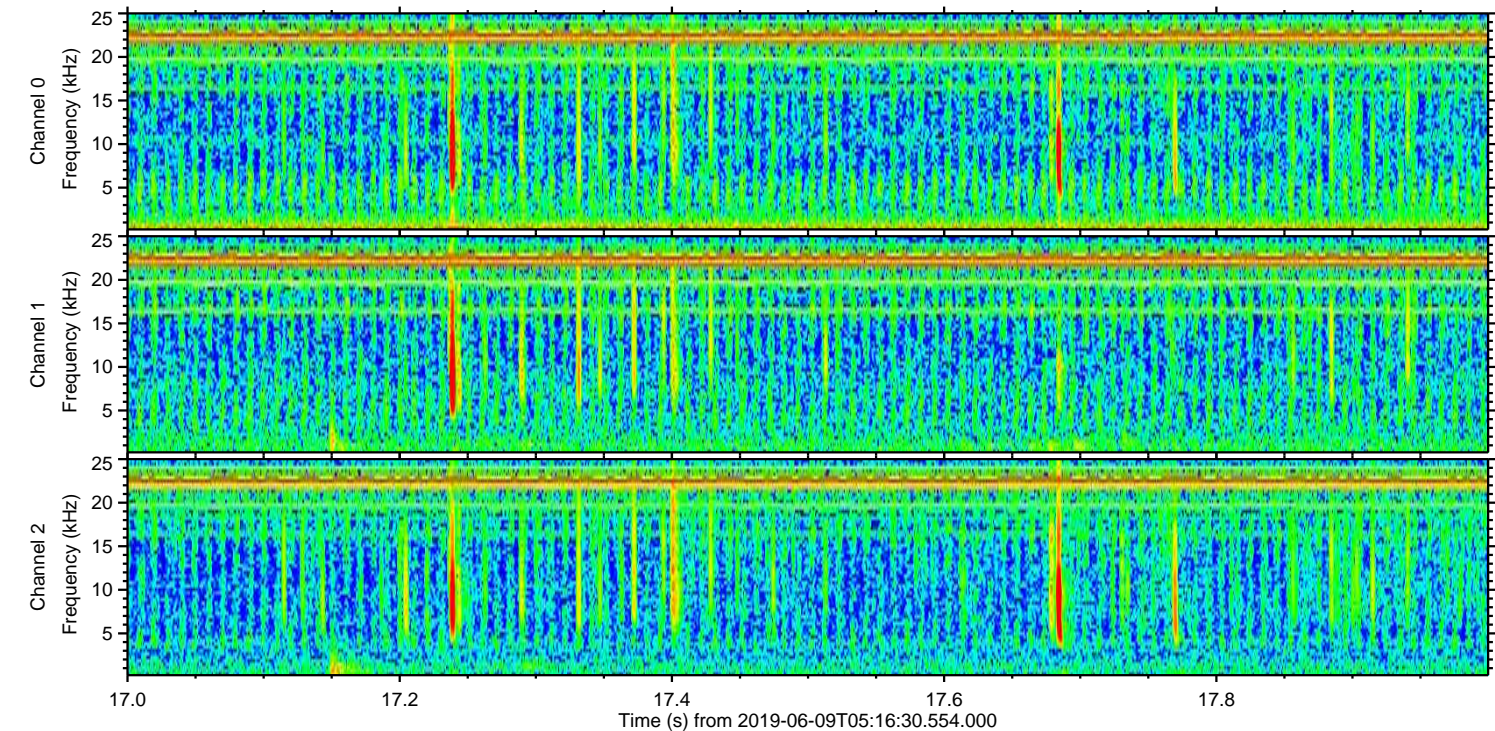
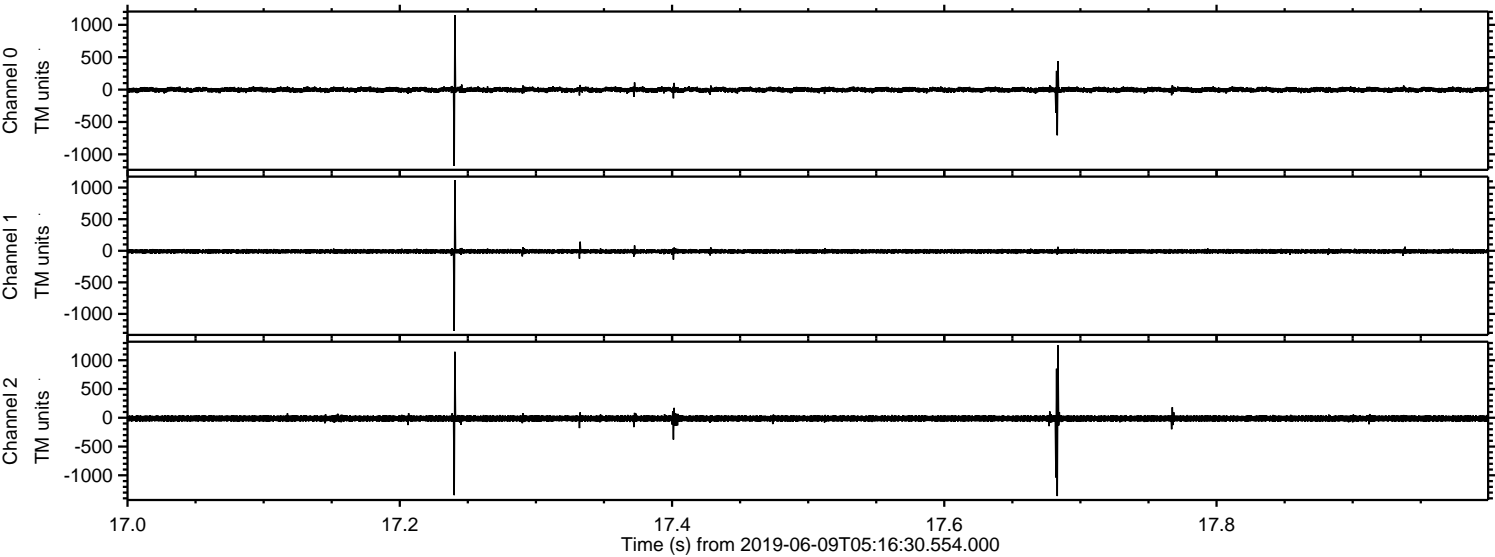
Channel 0  
mn: -1276  
mx: 1304  
 $\mu$ : -3.2  
 $\sigma$ : 23.0

Channel 1  
mn: -1371  
mx: 1259  
 $\mu$ : -9.6  
 $\sigma$ : 21.4

Channel 2  
mn: -1414  
mx: 1318  
 $\mu$ : -12.5  
 $\sigma$ : 33.7

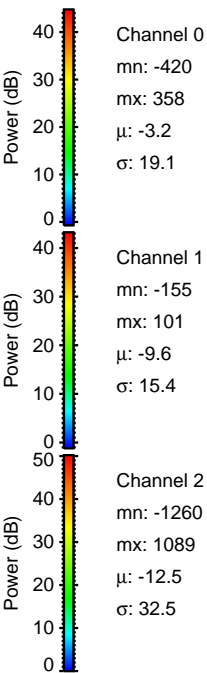
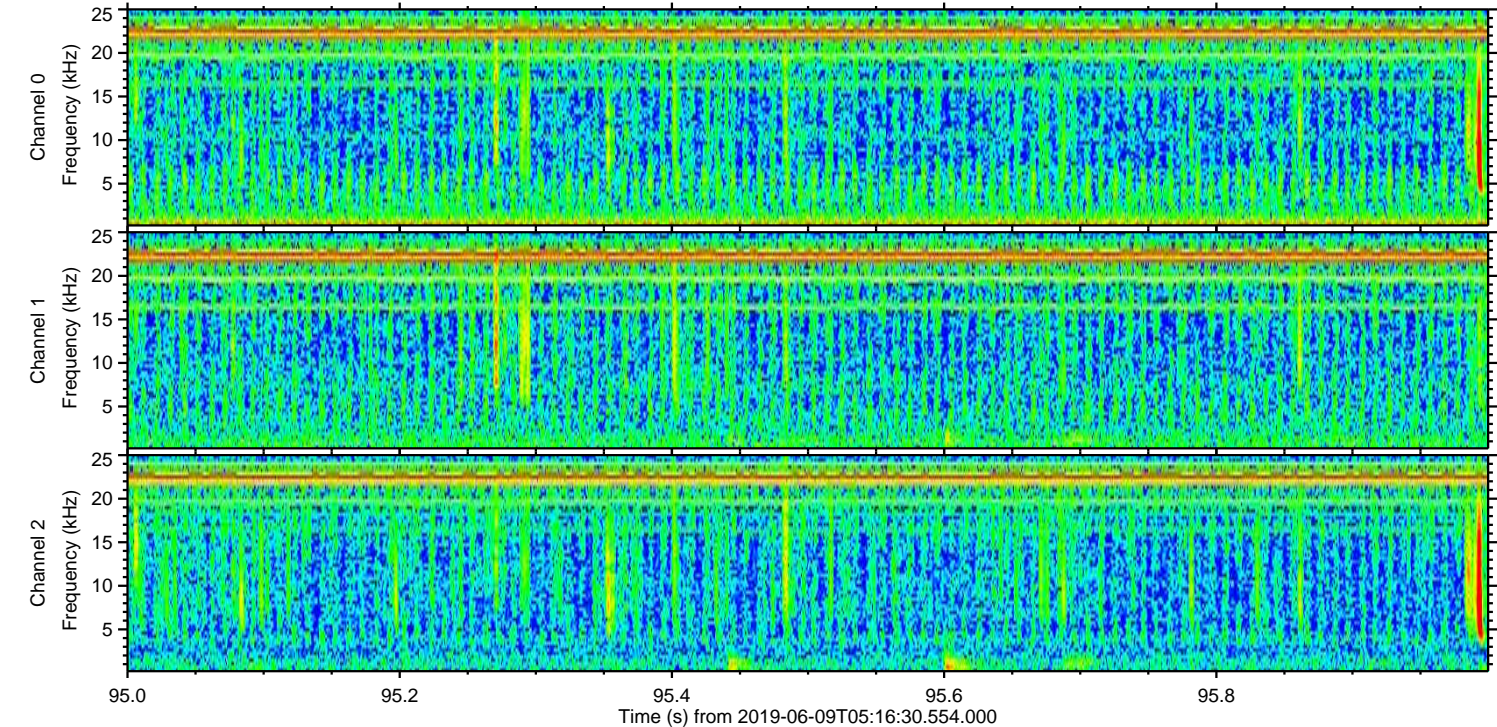
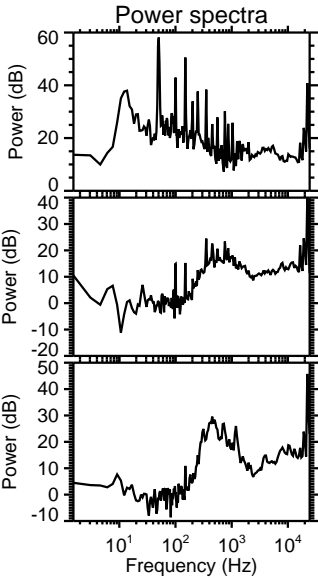
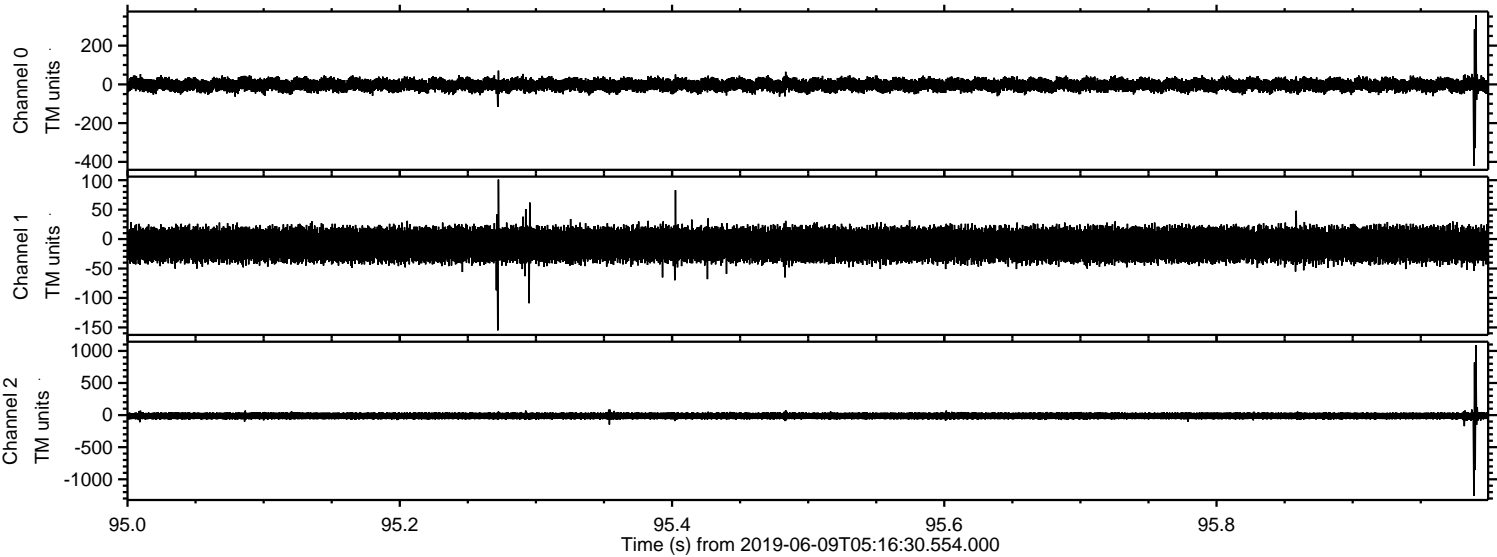


Processed Sun Jun 9 07:24:04 2019 by ELM ver.2012-10-06 from 001\_\_elm20190609\_051629\_\_dat00.bin





Processed Sun Jun 9 07:24:05 2019 by ELM ver.2012-10-06 from 001\_\_elm20190609\_051629\_\_dat00.bin





Processed Sun Jun 9 07:24:06 2019 by ELM ver.2012-10-06 from 001\_\_elm20190609\_051629\_\_dat00.bin

