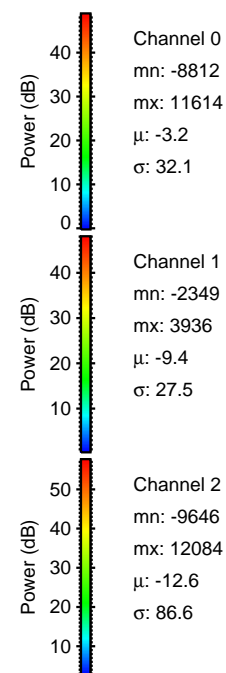
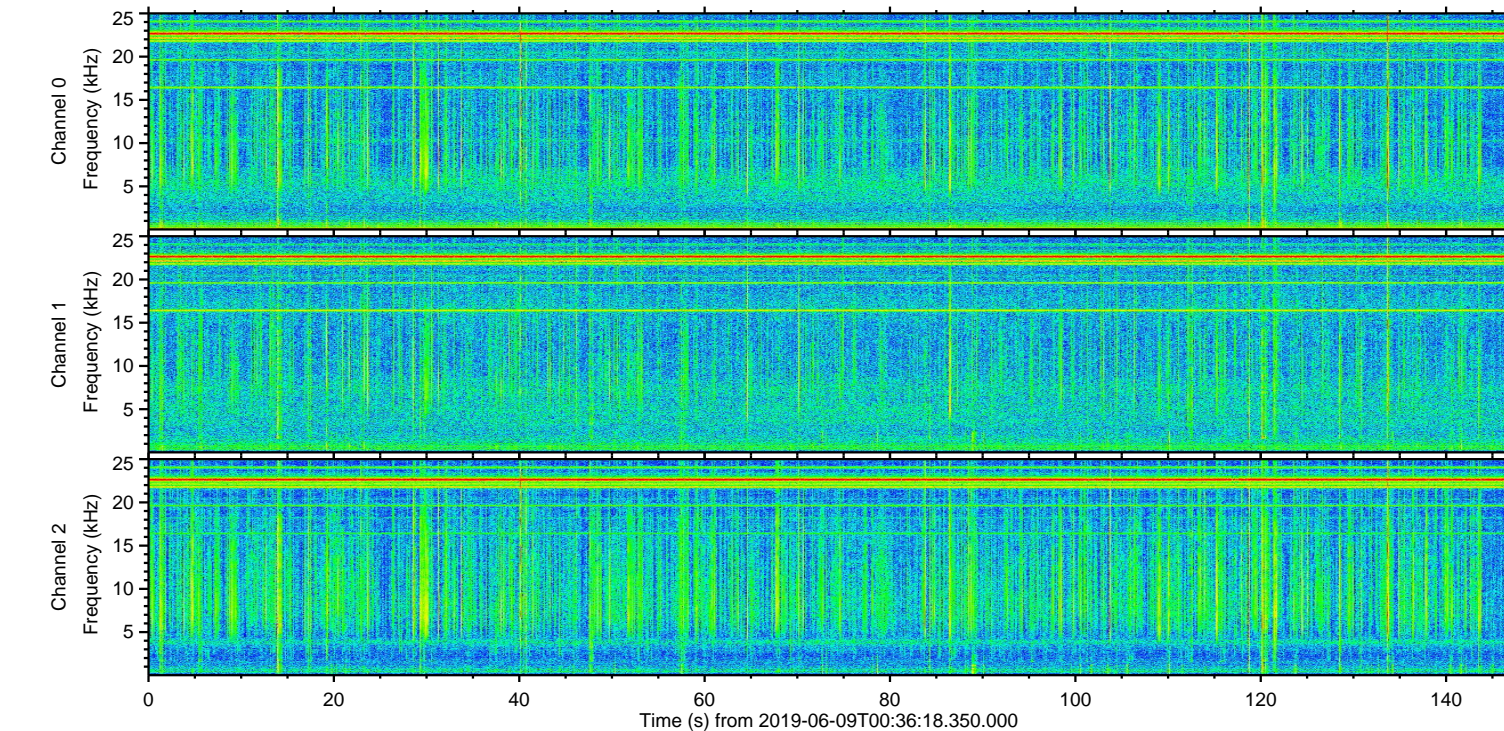
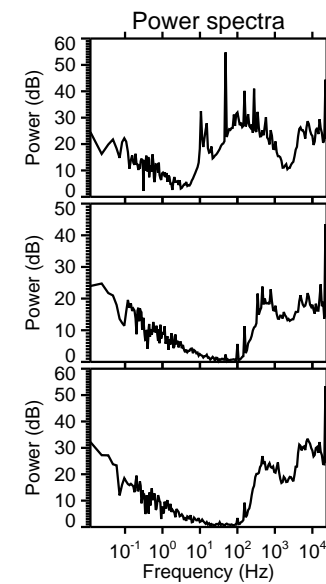
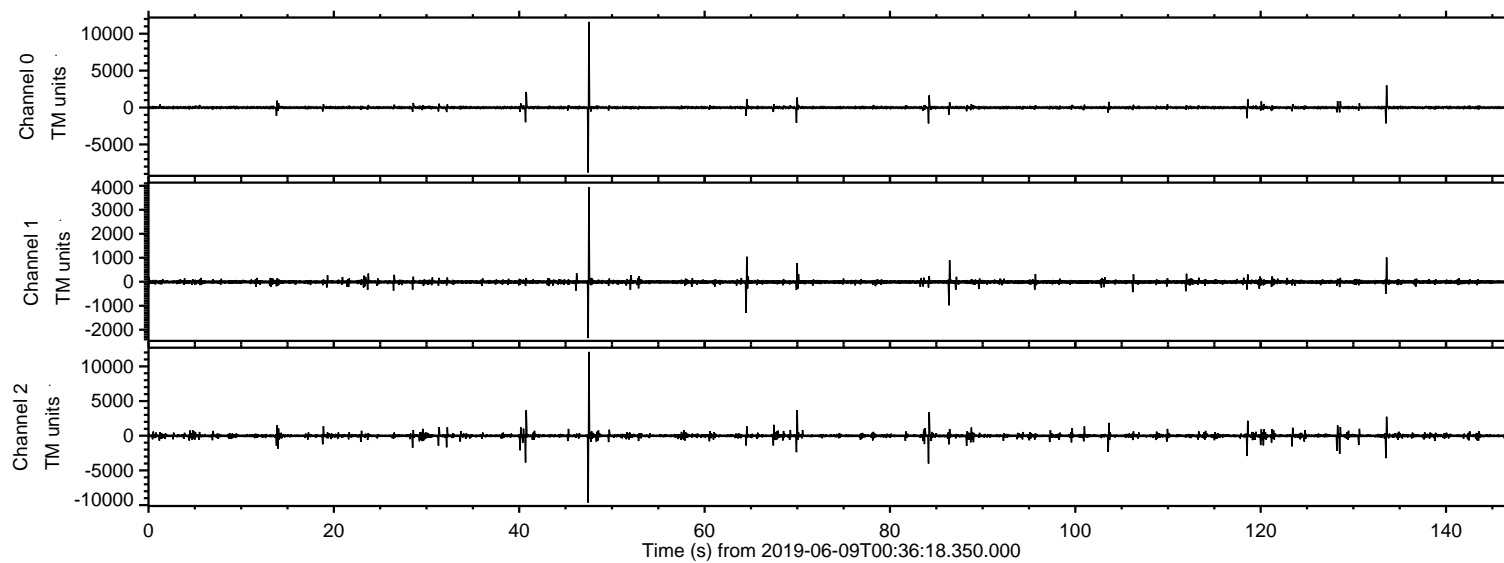
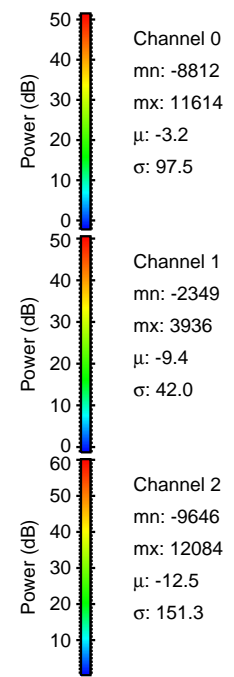
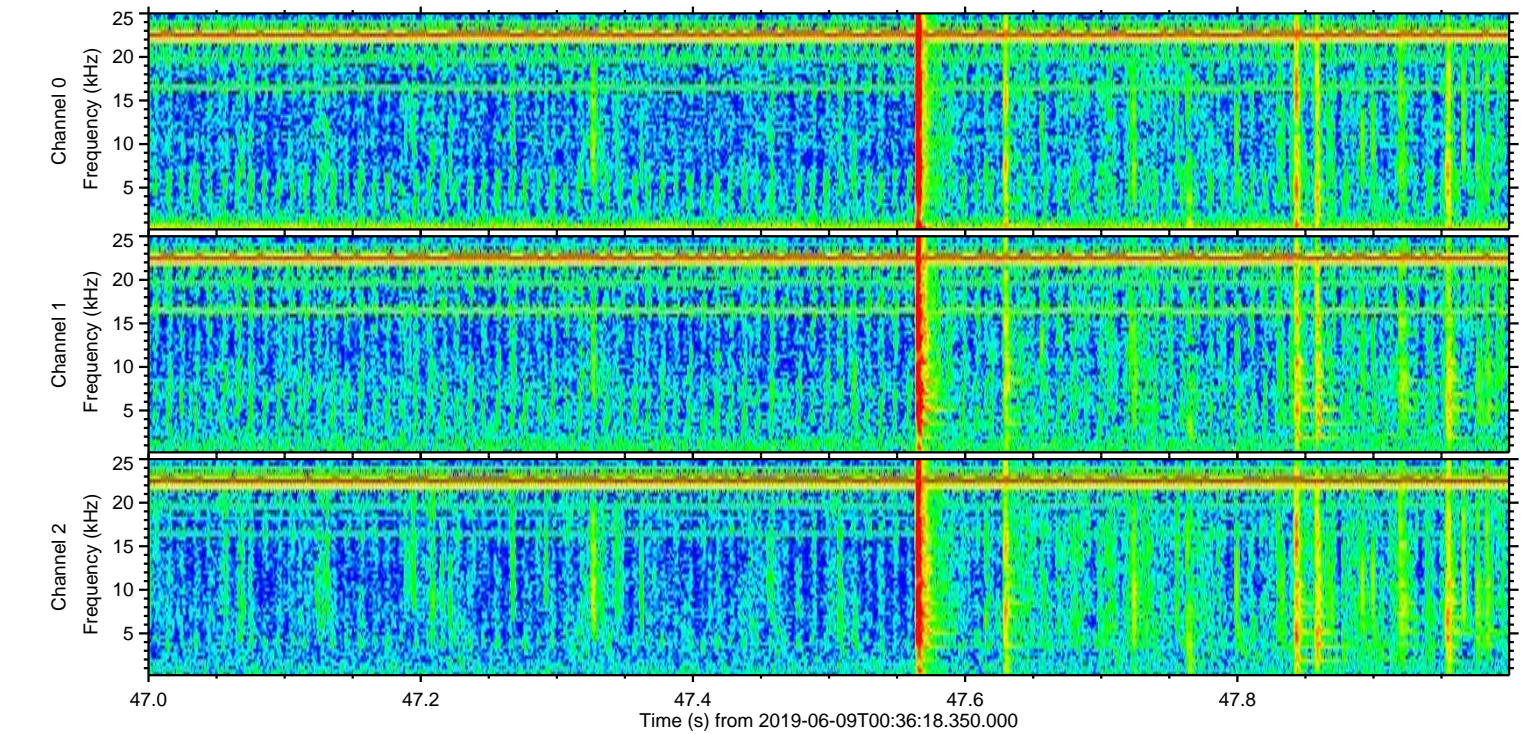
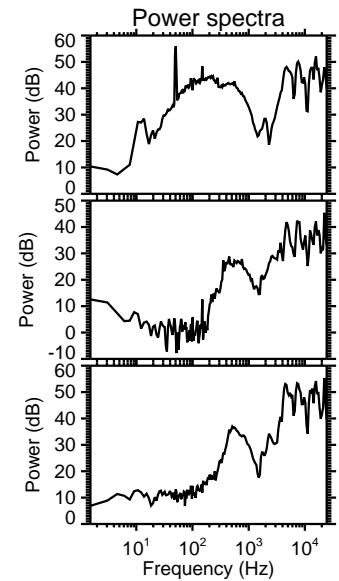
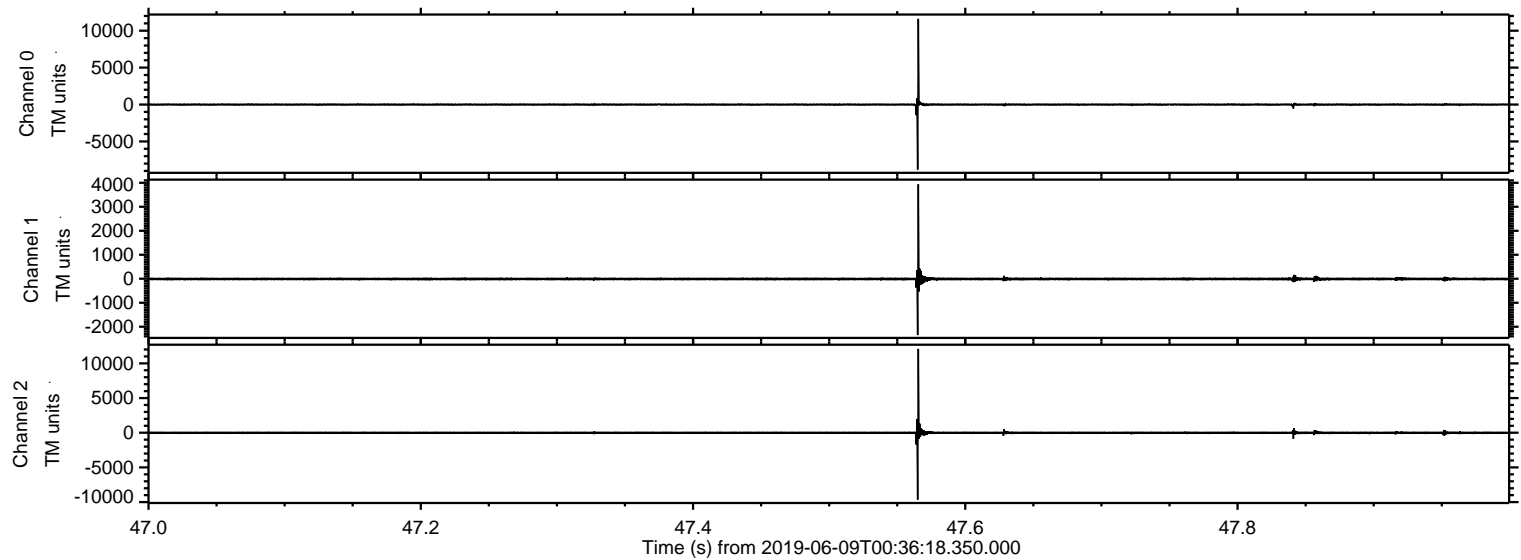


ELMAVAN 3D WAVEFORMS (Measured data sampled at 50 kHz) 51000 packets of 144 samples from 2019-06-09T00:36:18.350.000.

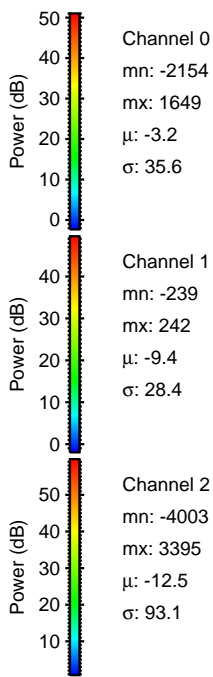
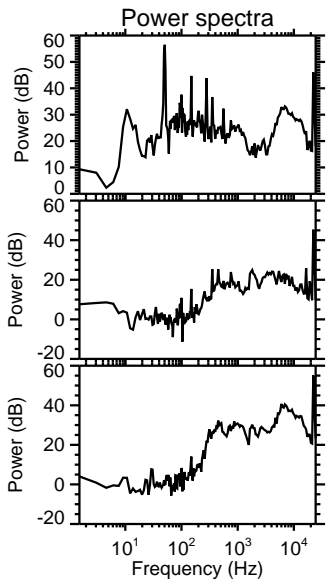
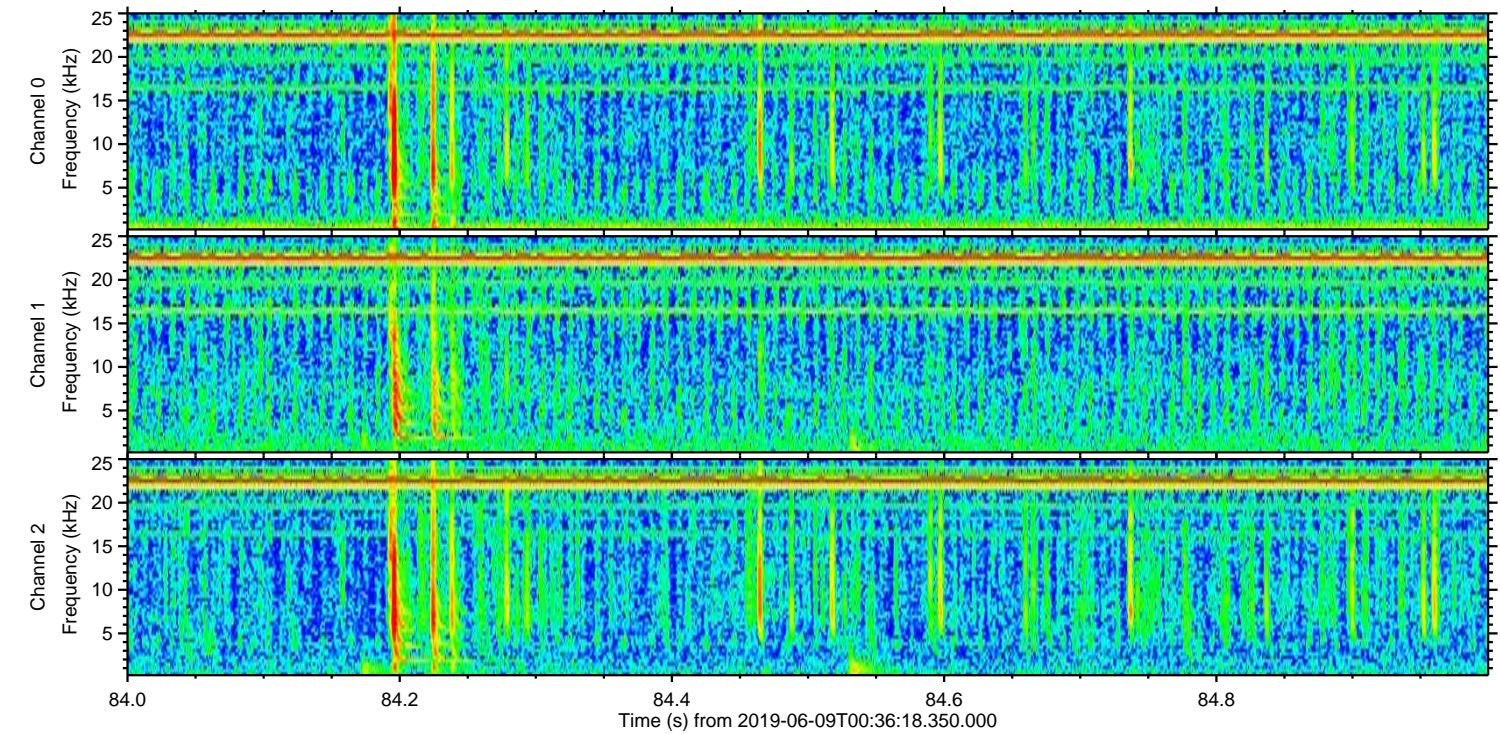
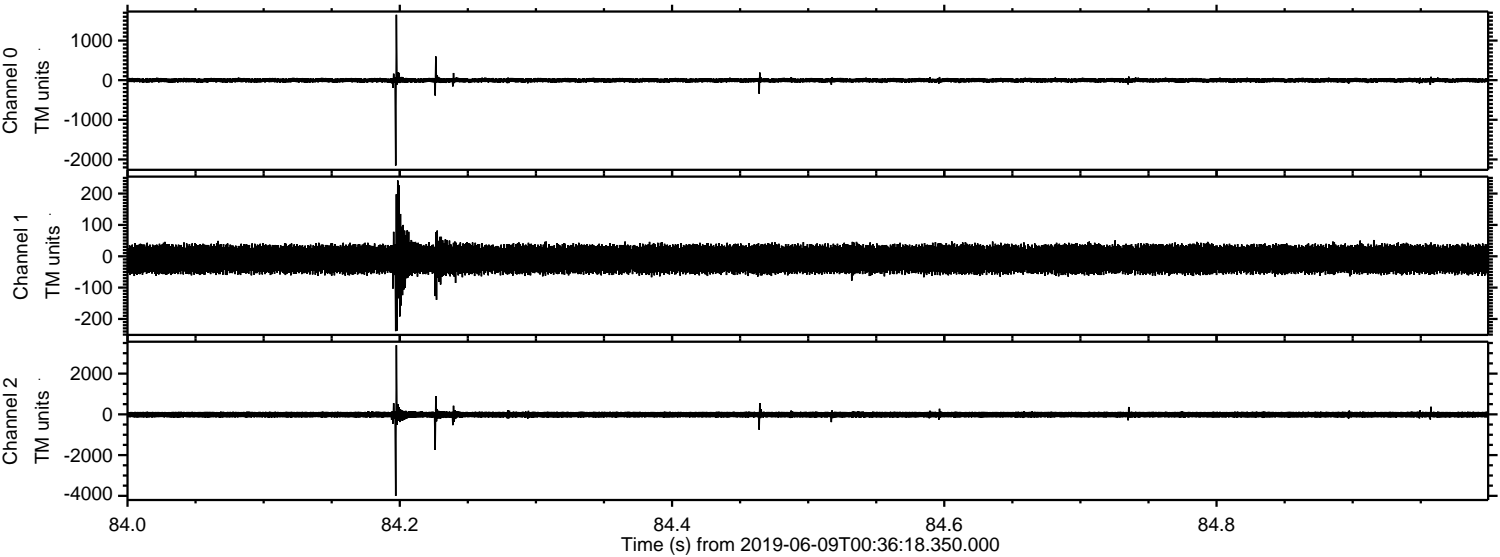
Processed Sun Jun 9 02:43:40 2019 by ELM ver.2012-10-06 from 001__elm20190609_003617__dat00.bin



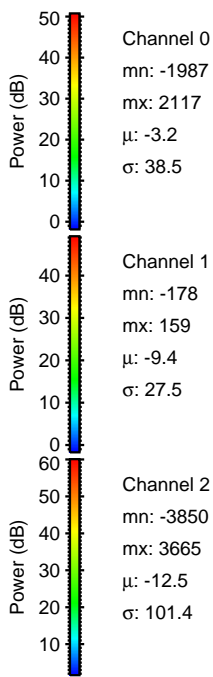
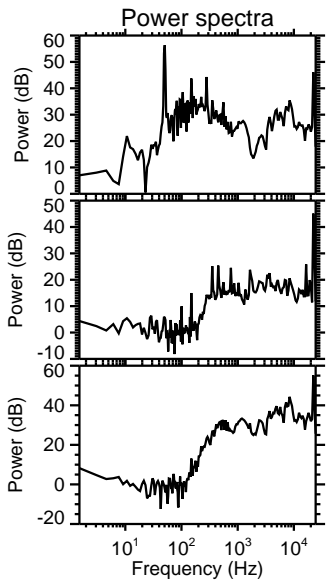
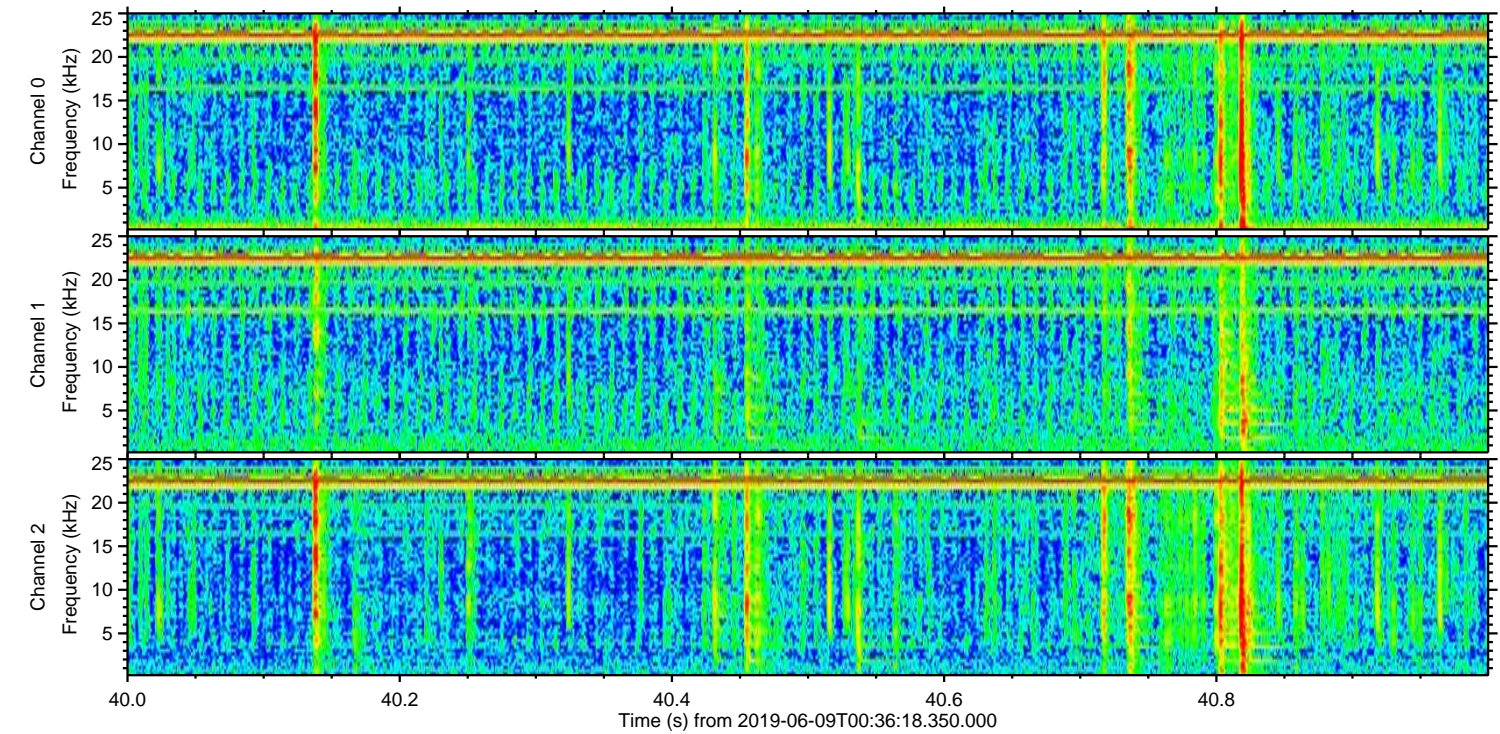
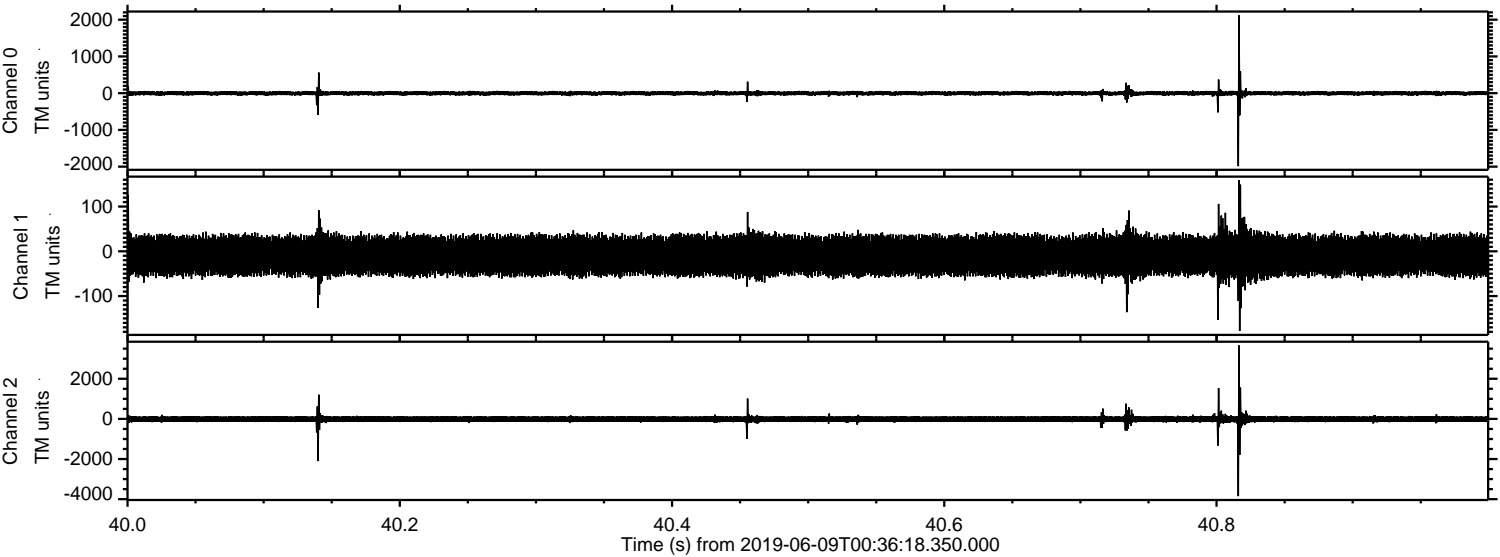
Processed Sun Jun 9 02:43:50 2019 by ELM ver.2012-10-06 from 001__elm20190609_003617__dat00.bin



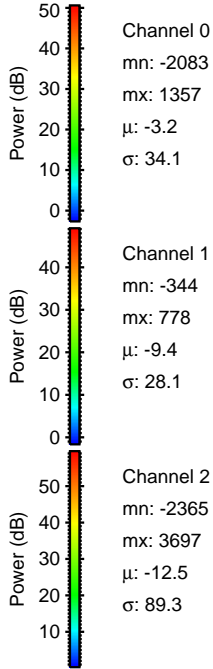
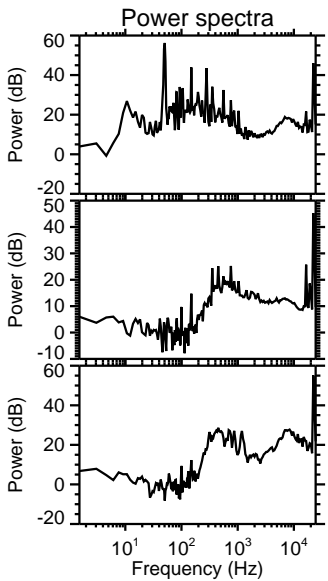
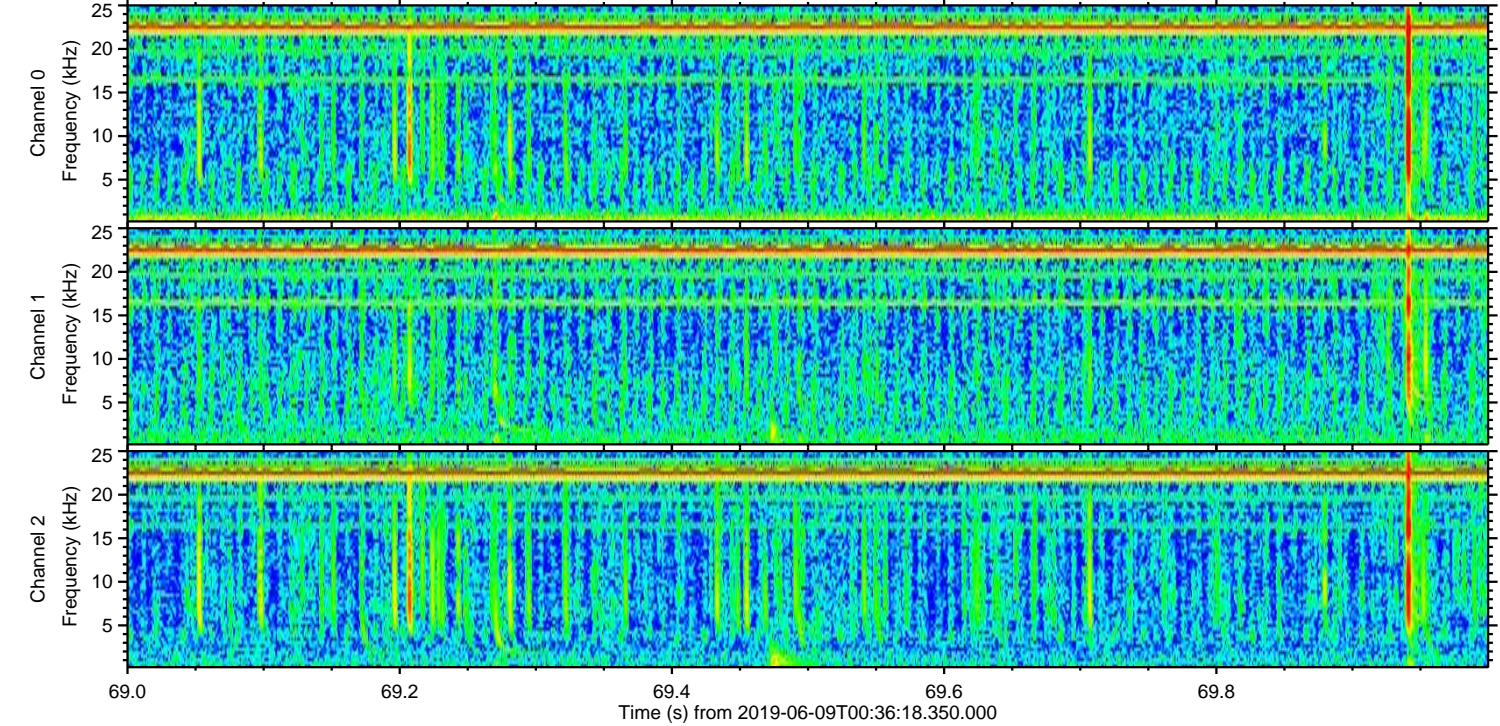
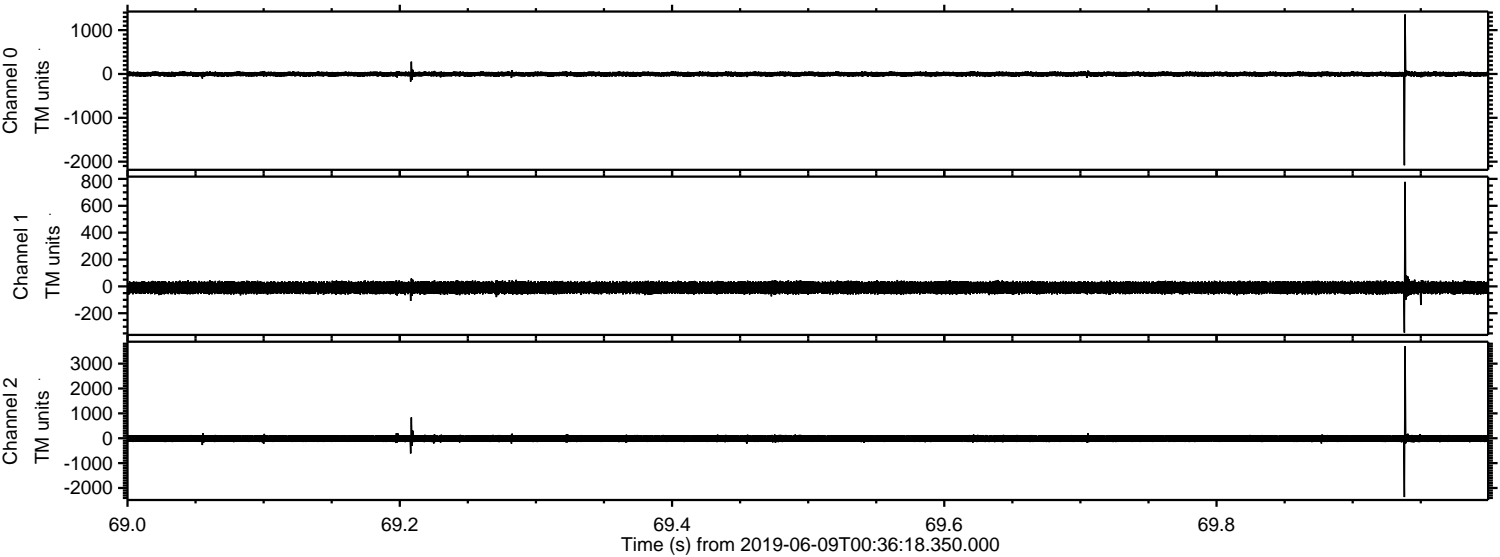
Processed Sun Jun 9 02:43:51 2019 by ELM ver.2012-10-06 from 001__elm20190609_003617__dat00.bin



Processed Sun Jun 9 02:43:52 2019 by ELM ver.2012-10-06 from 001__elm20190609_003617__dat00.bin

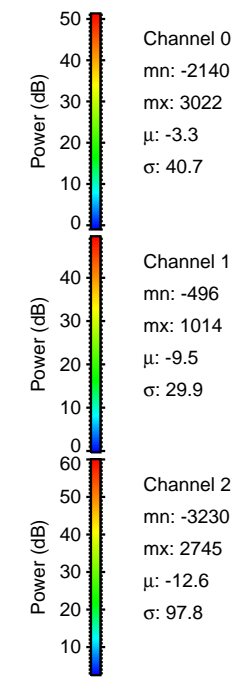
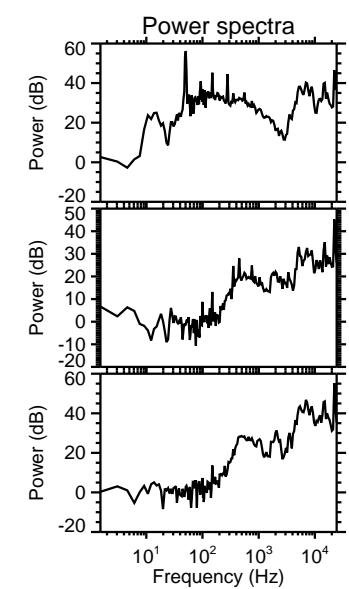
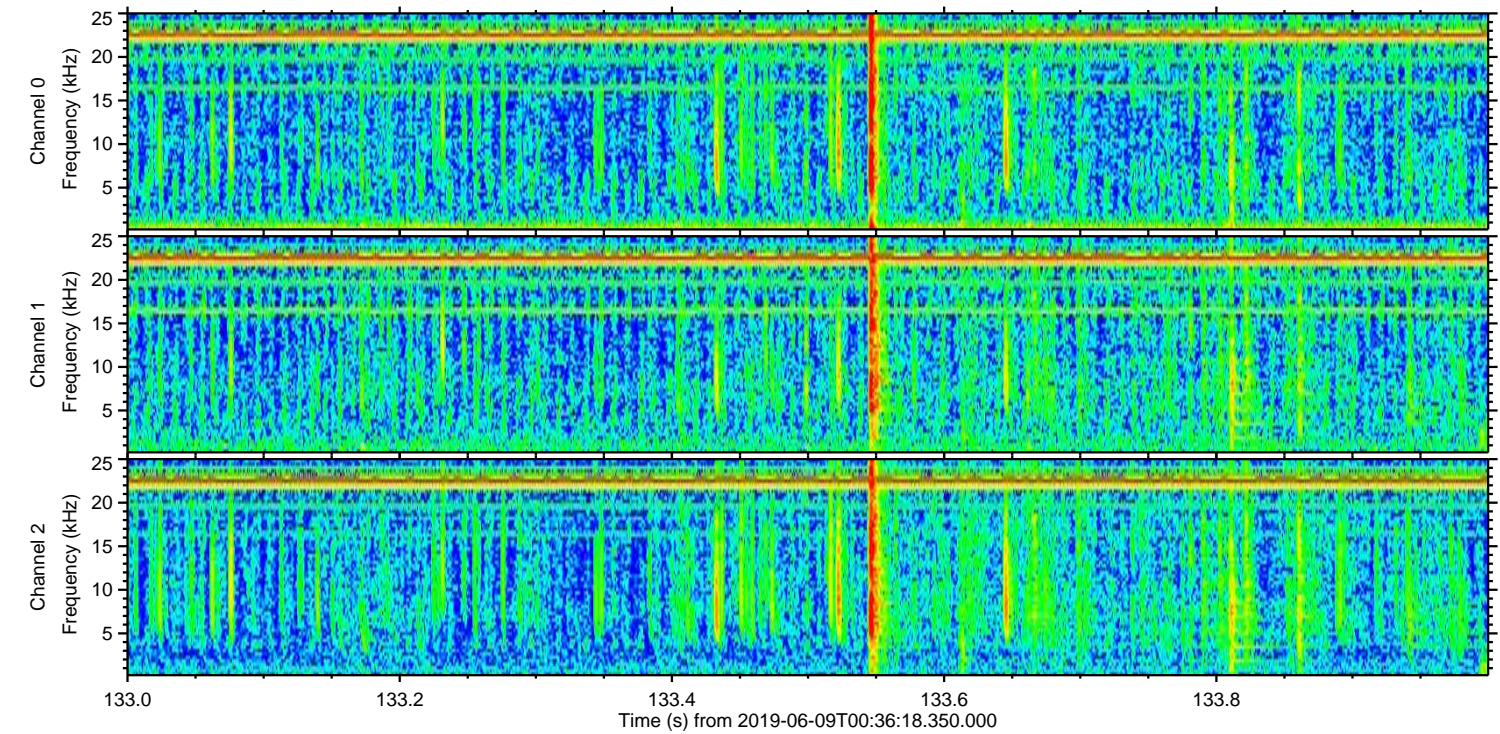
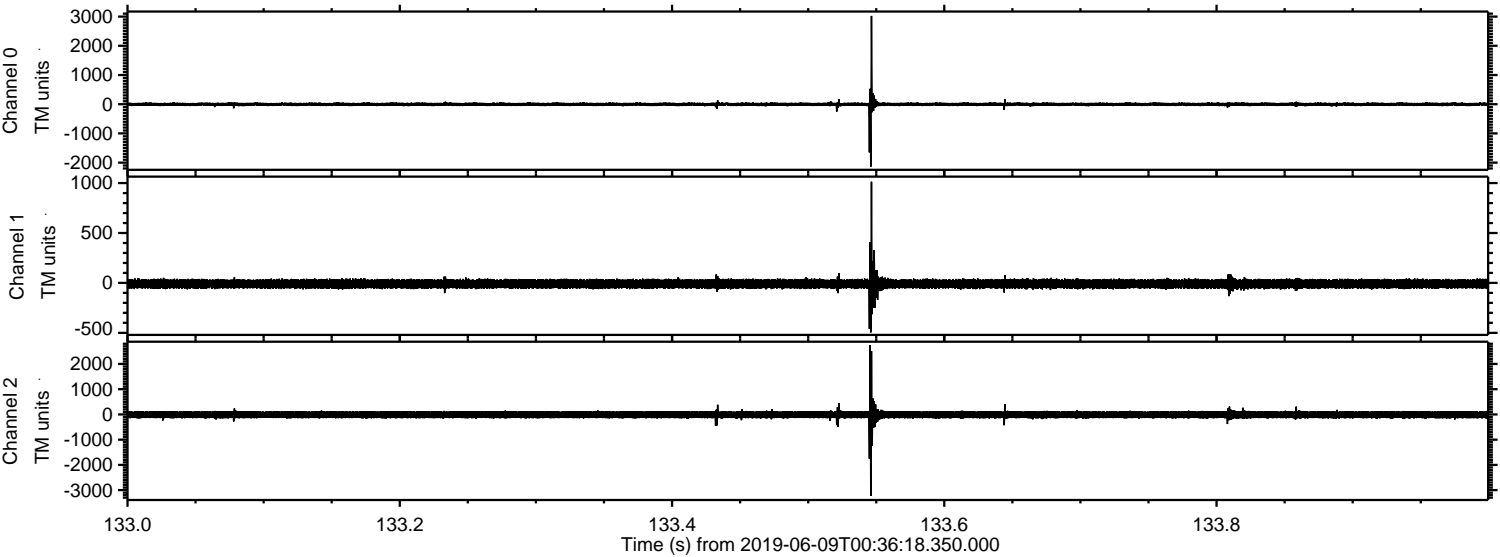


Processed Sun Jun 9 02:43:53 2019 by ELM ver.2012-10-06 from 001__elm20190609_003617__dat00.bin



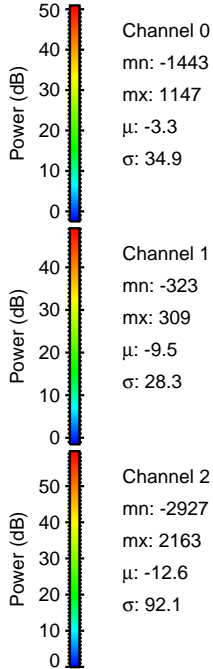
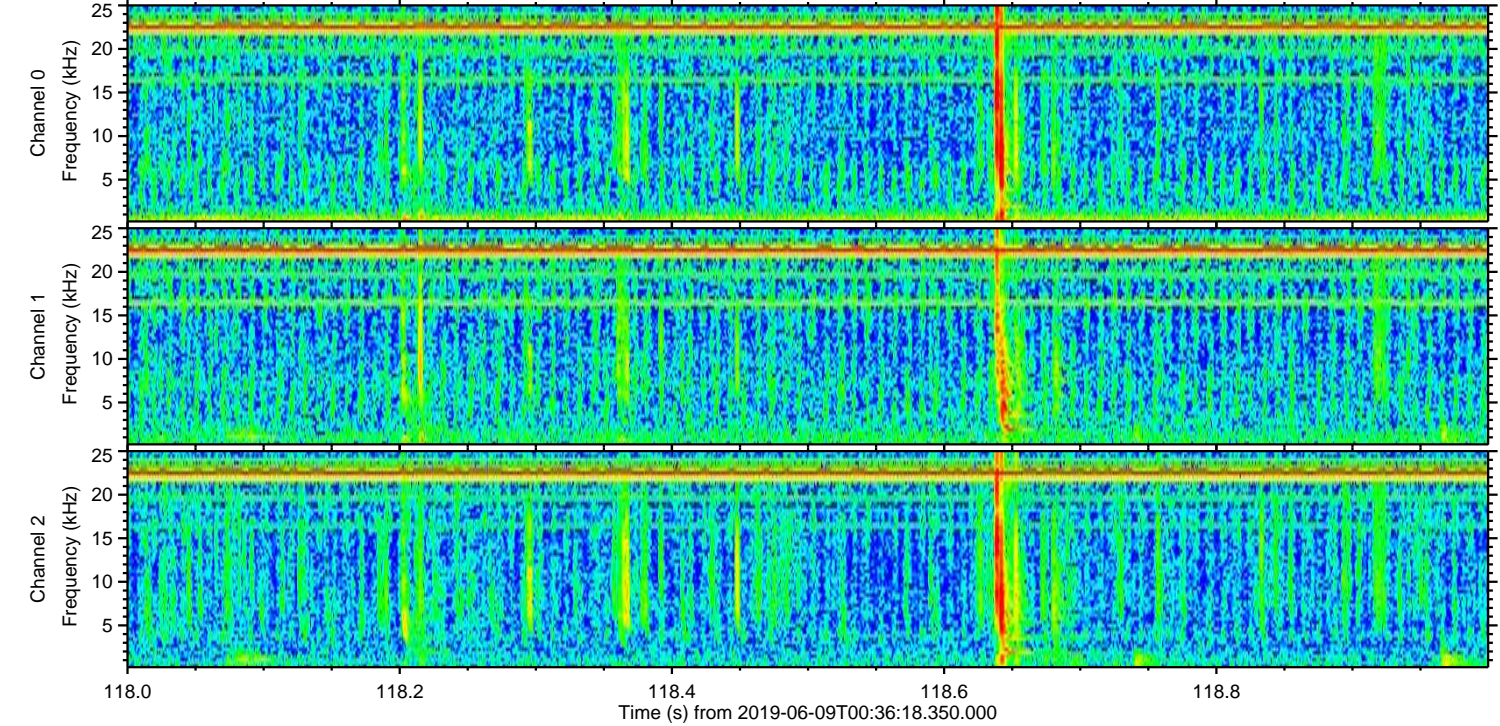
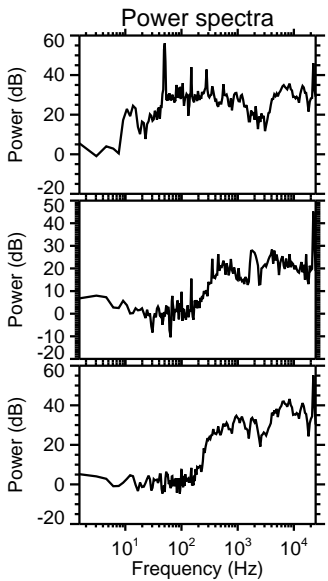
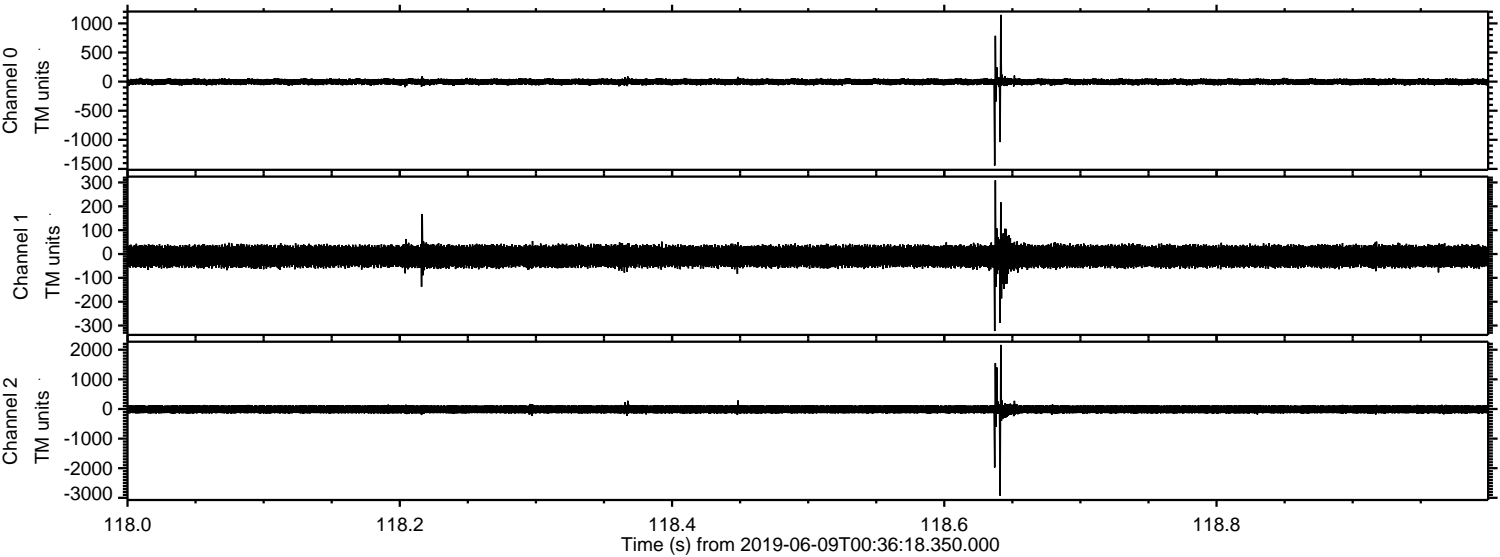
ELMAVAN 3D WAVEFORMS (Measured data sampled at 50 kHz) 51000 packets of 144 samples from 2019-06-09T00:36:18.350.000. Part 134/147

Processed Sun Jun 9 02:43:54 2019 by ELM ver.2012-10-06 from 001__elm20190609_003617__dat00.bin



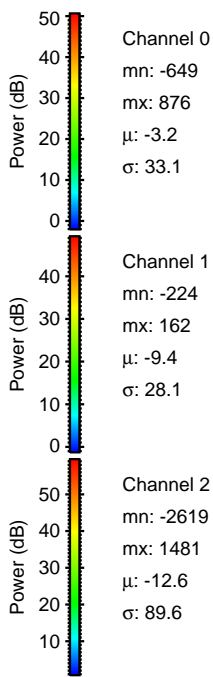
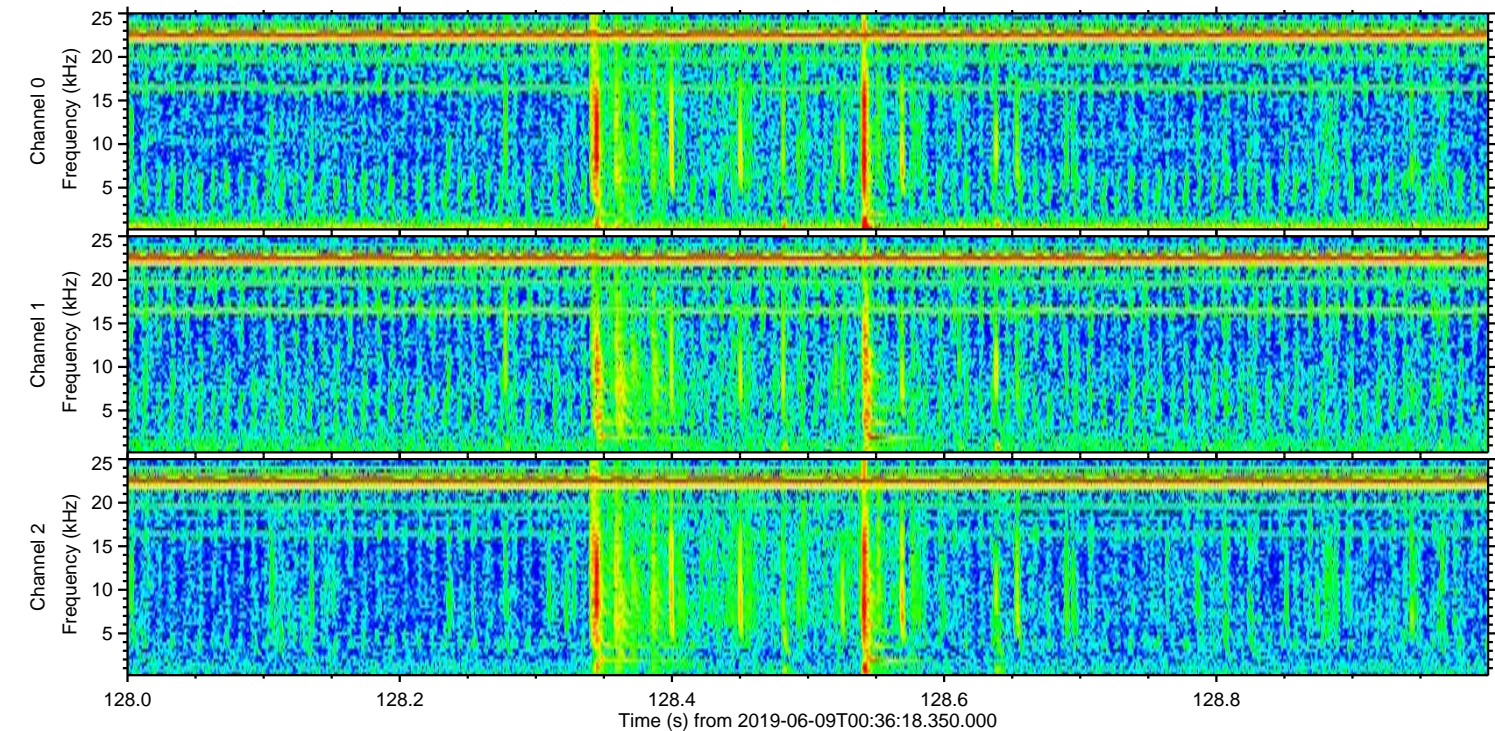
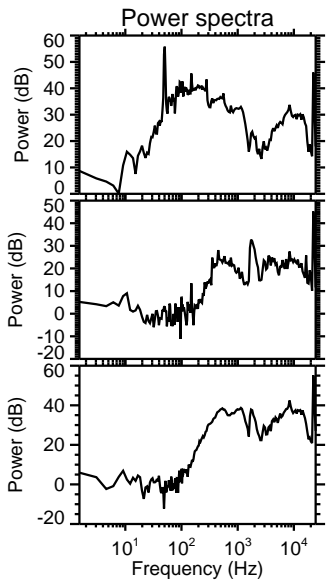
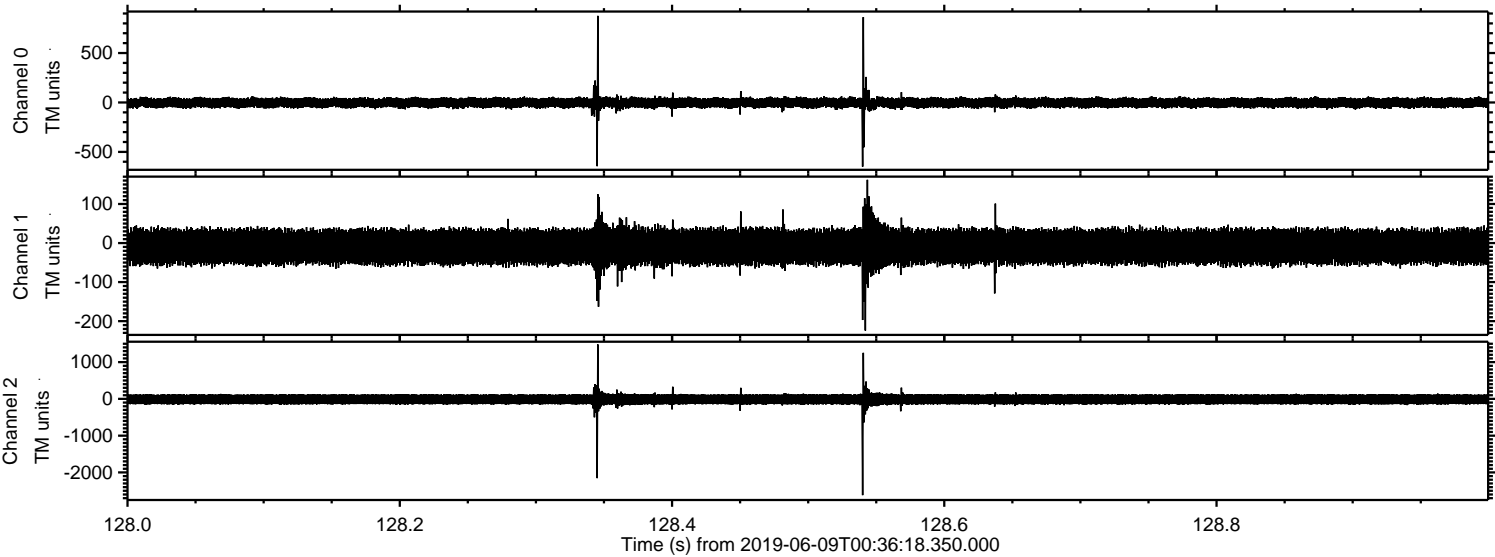
ELMAVAN 3D WAVEFORMS (Measured data sampled at 50 kHz) 51000 packets of 144 samples from 2019-06-09T00:36:18.350.000. Part 119/147

Processed Sun Jun 9 02:43:55 2019 by ELM ver.2012-10-06 from 001__elm20190609_003617__dat00.bin

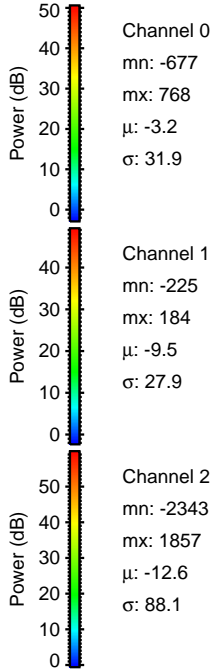
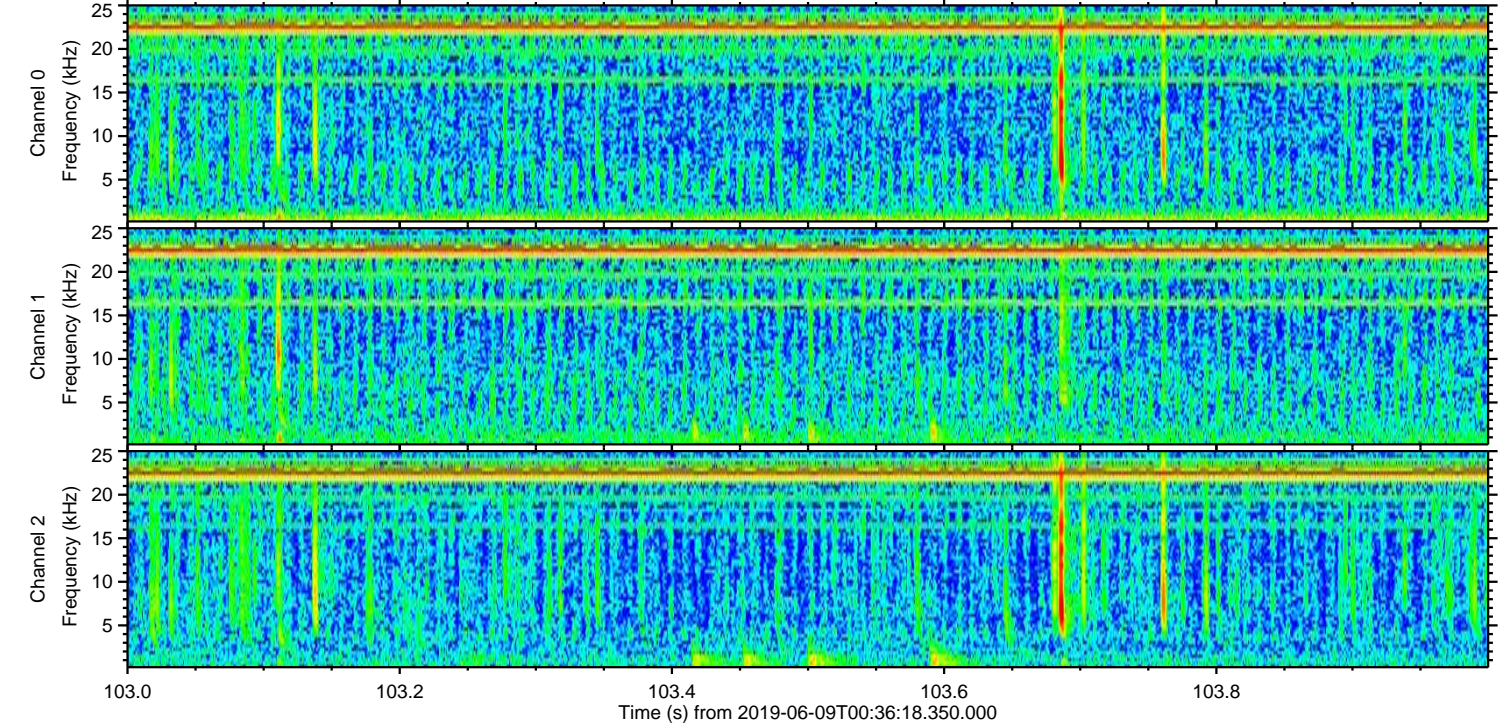
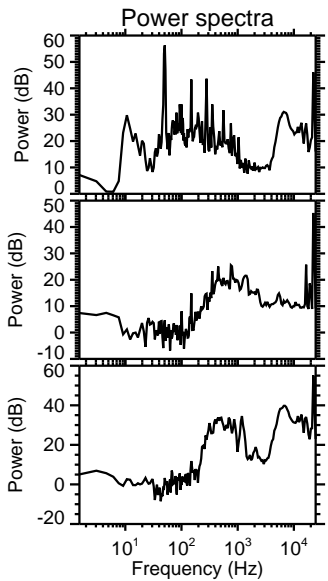
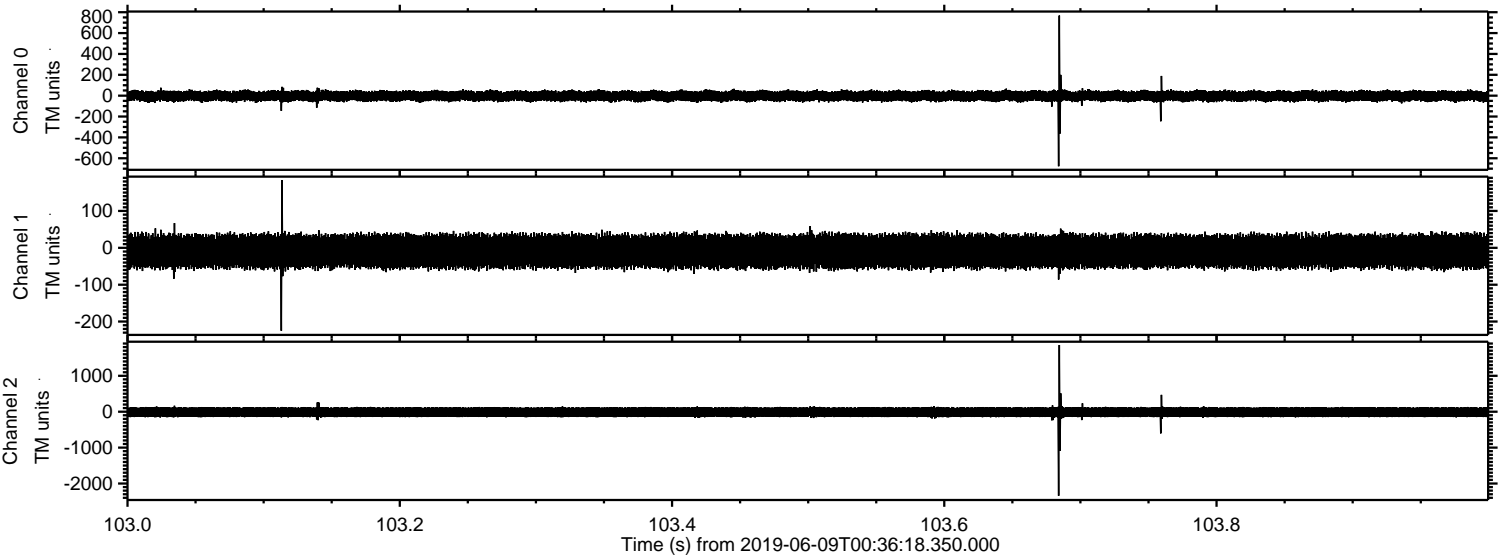


ELMAVAN 3D WAVEFORMS (Measured data sampled at 50 kHz) 51000 packets of 144 samples from 2019-06-09T00:36:18.350.000. Part 129/147

Processed Sun Jun 9 02:43:55 2019 by ELM ver.2012-10-06 from 001__elm20190609_003617__dat00.bin



Processed Sun Jun 9 02:43:56 2019 by ELM ver.2012-10-06 from 001__elm20190609_003617__dat00.bin



Channel 0
mn: -677
mx: 768
 μ : -3.2
 σ : 31.9

Channel 1
mn: -225
mx: 184
 μ : -9.5
 σ : 27.9

Channel 2
mn: -2343
mx: 1857
 μ : -12.6
 σ : 88.1

Processed Sun Jun 9 02:43:58 2019 by ELM ver.2012-10-06 from 001__elm20190609_003617__dat00.bin

