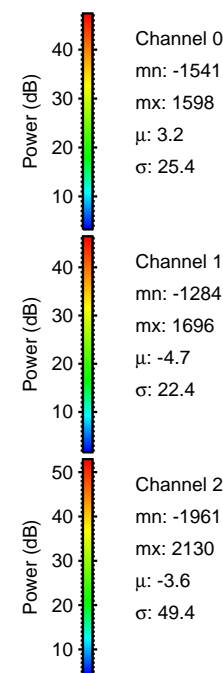
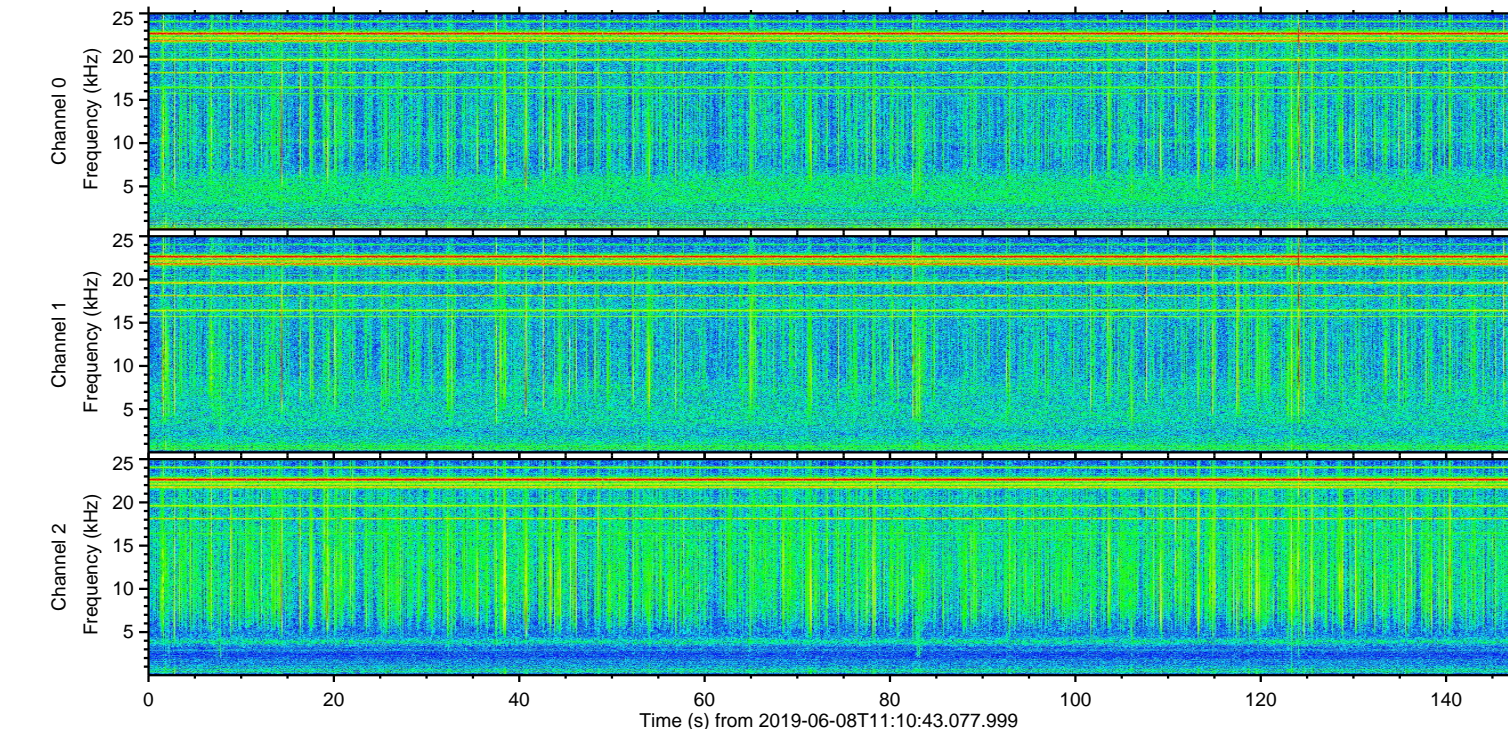
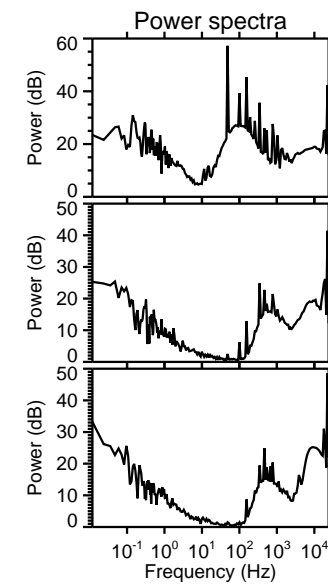
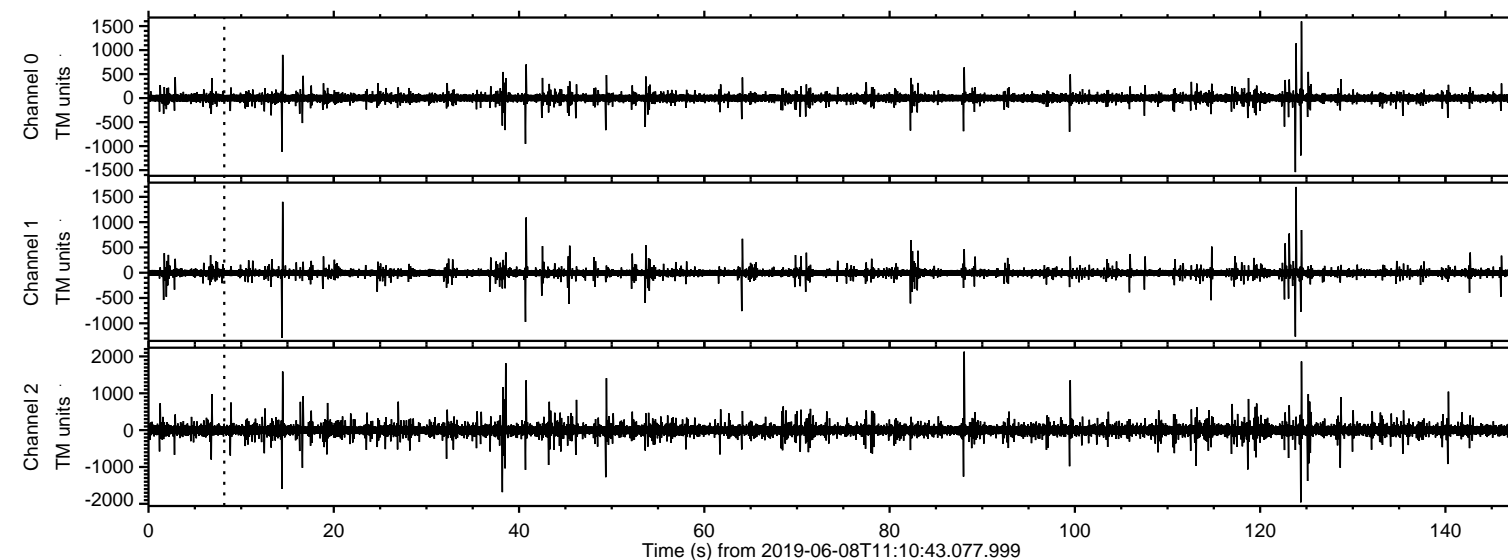
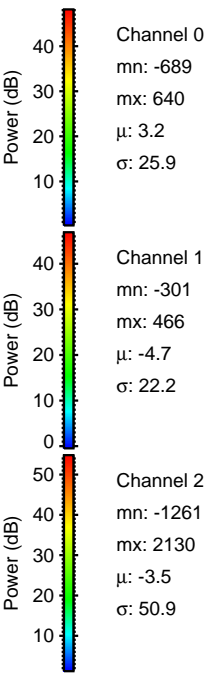
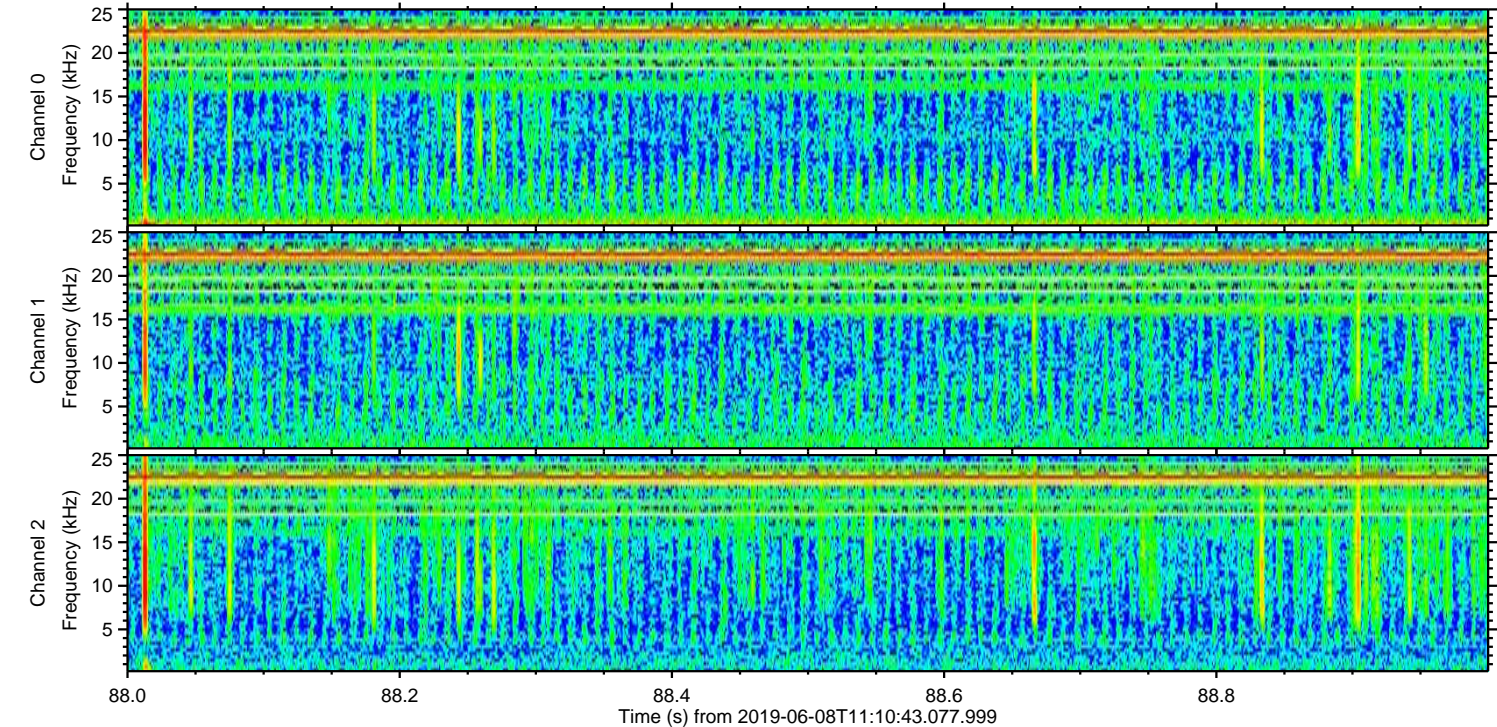
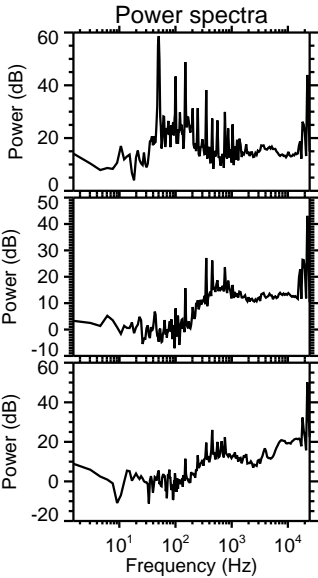
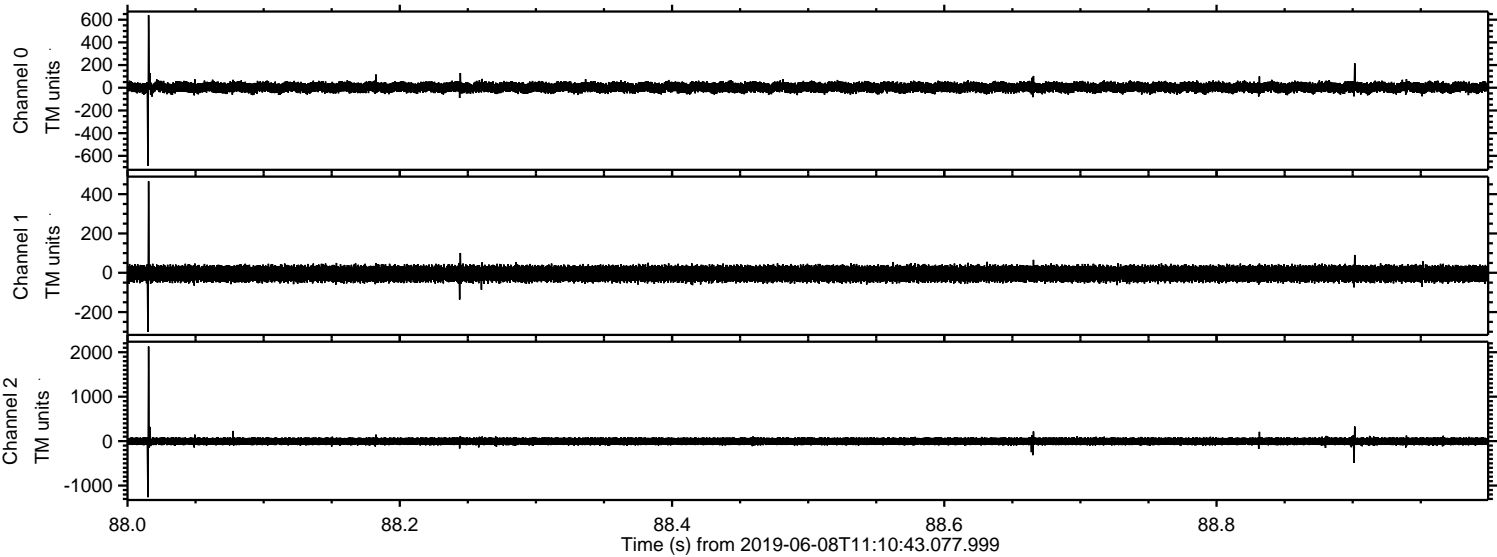


ELMAVAN 3D WAVEFORMS (Measured data sampled at 50 kHz) 50999 packets of 144 samples from 2019-06-08T11:10:43.077.999.

Processed Sat Jun 8 13:18:42 2019 by ELM ver.2012-10-06 from 001__elm20190608_111042__dat00.bin

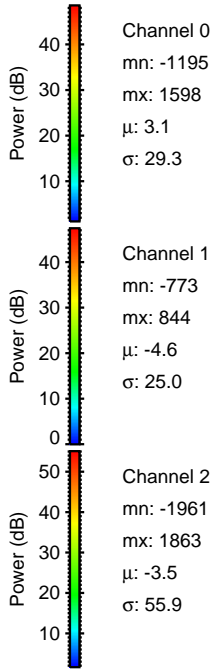
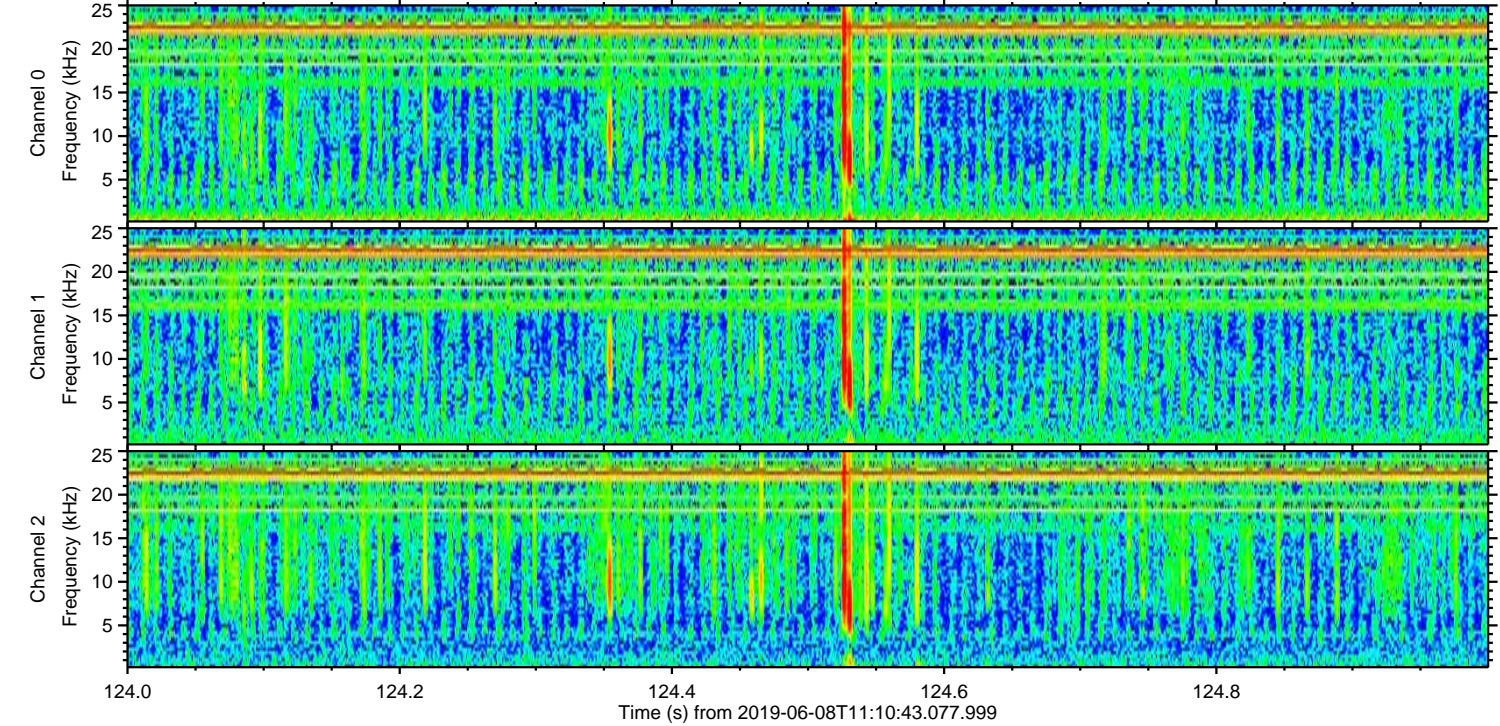
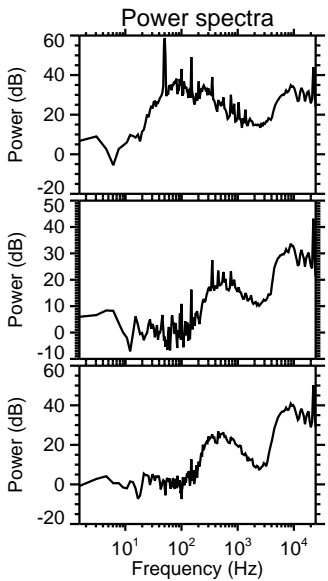
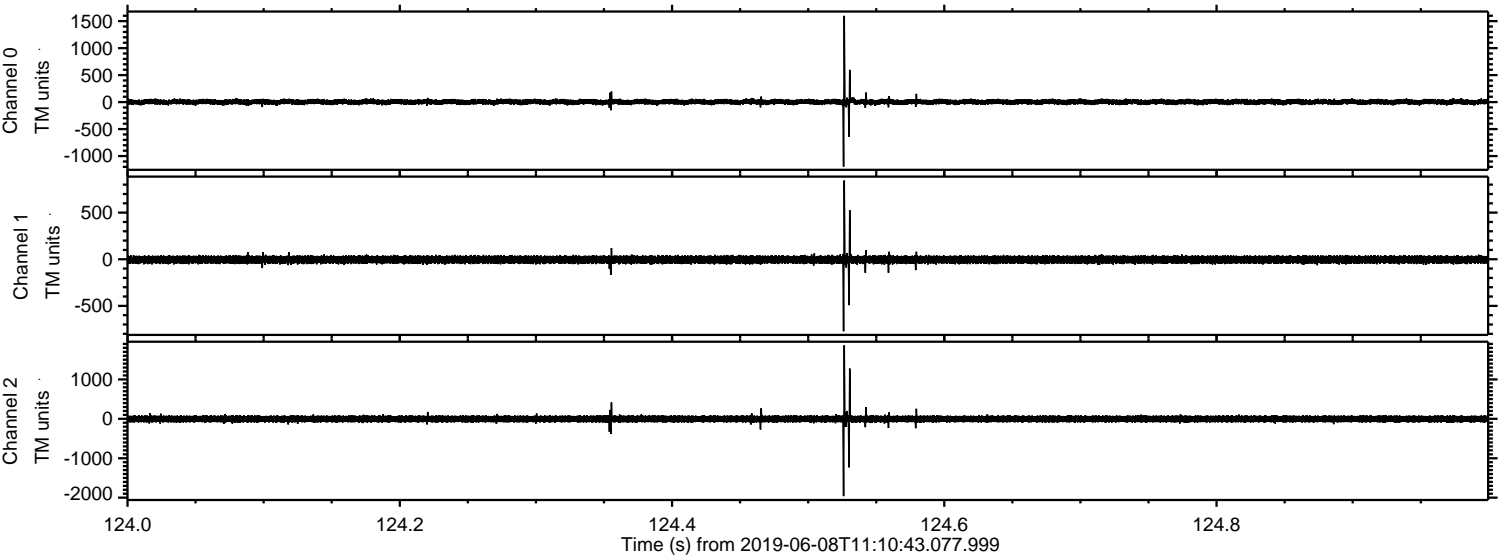


Processed Sat Jun 8 13:18:48 2019 by ELM ver.2012-10-06 from 001__elm20190608_111042__dat00.bin



ELMAVAN 3D WAVEFORMS (Measured data sampled at 50 kHz) 50999 packets of 144 samples from 2019-06-08T11:10:43.077.999. Part 125/147

Processed Sat Jun 8 13:18:49 2019 by ELM ver.2012-10-06 from 001__elm20190608_111042__dat00.bin

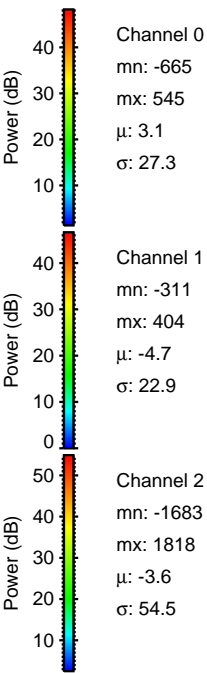
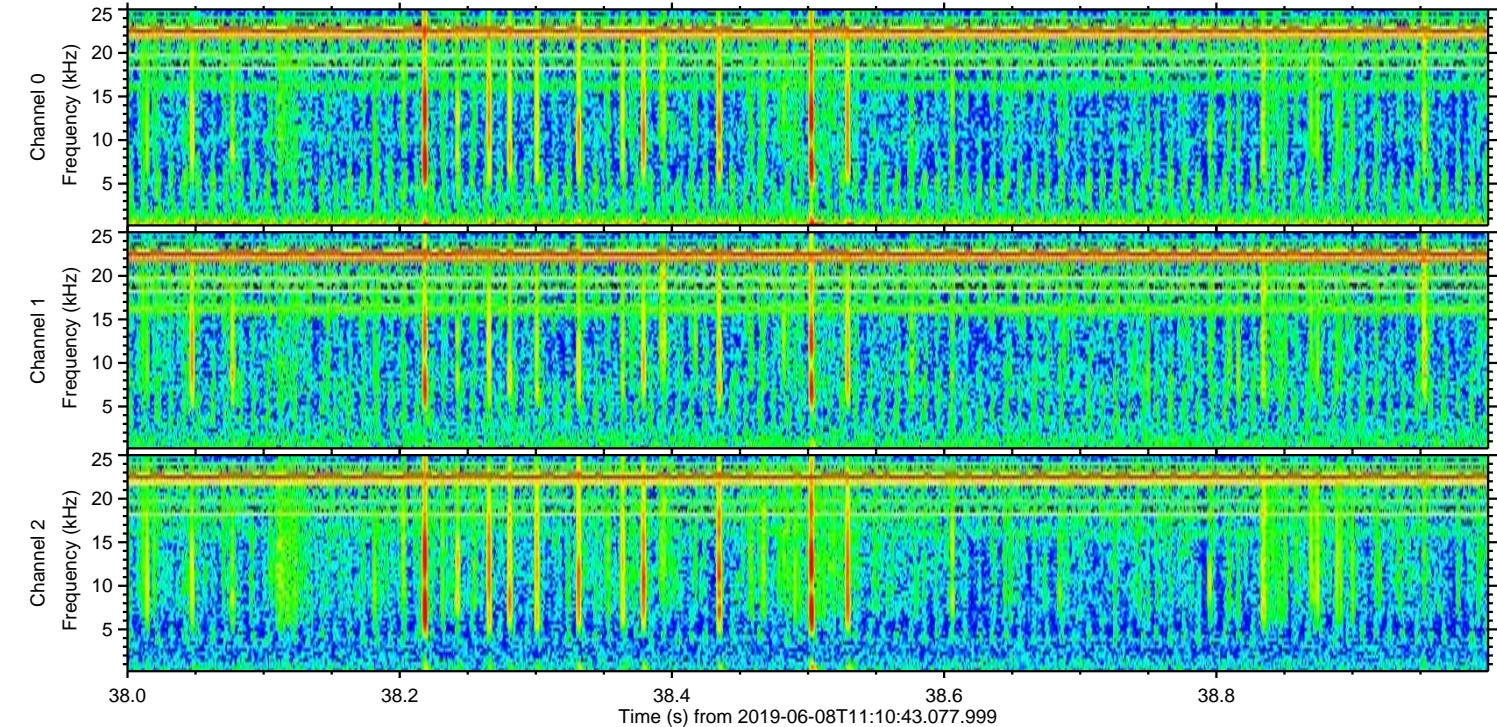
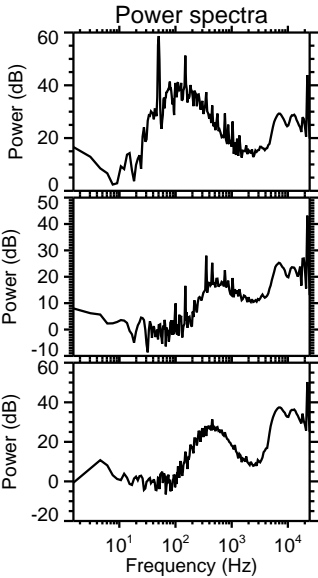
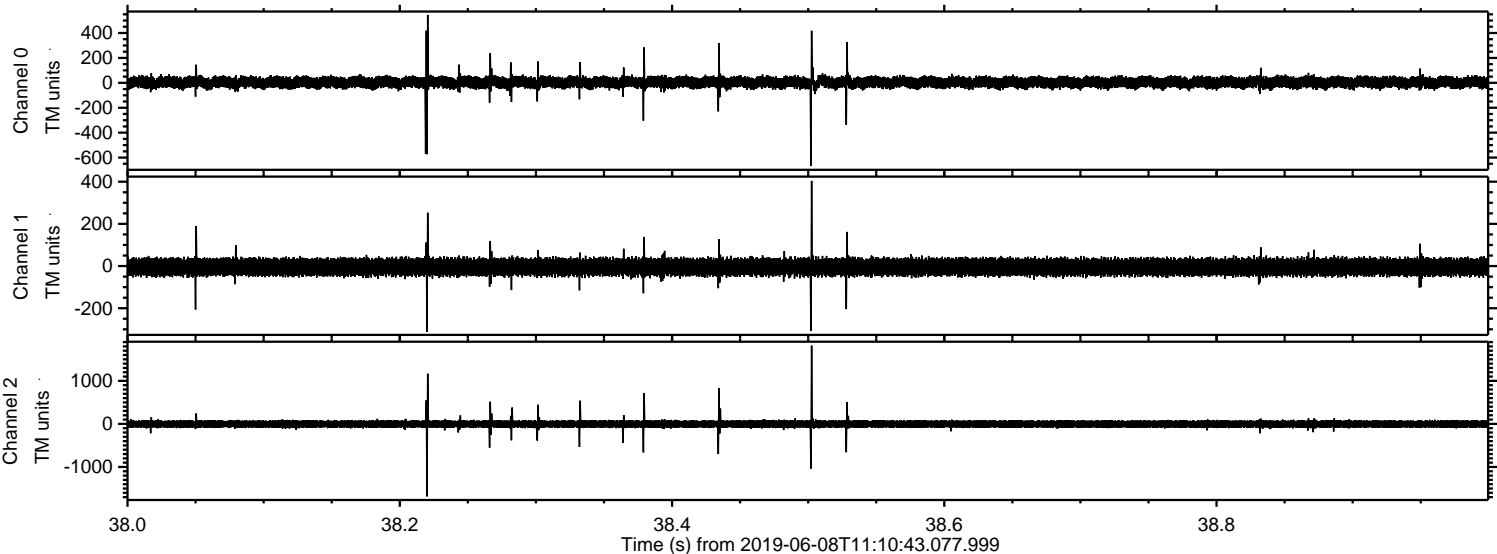


Channel 0
mn: -1195
mx: 1598
 μ : 3.1
 σ : 29.3

Channel 1
mn: -773
mx: 844
 μ : -4.6
 σ : 25.0

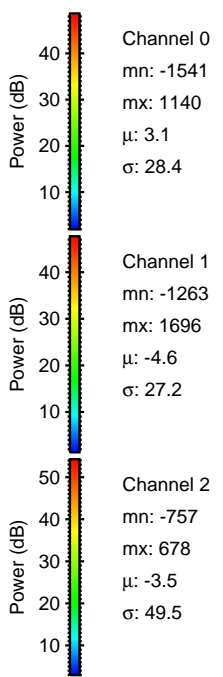
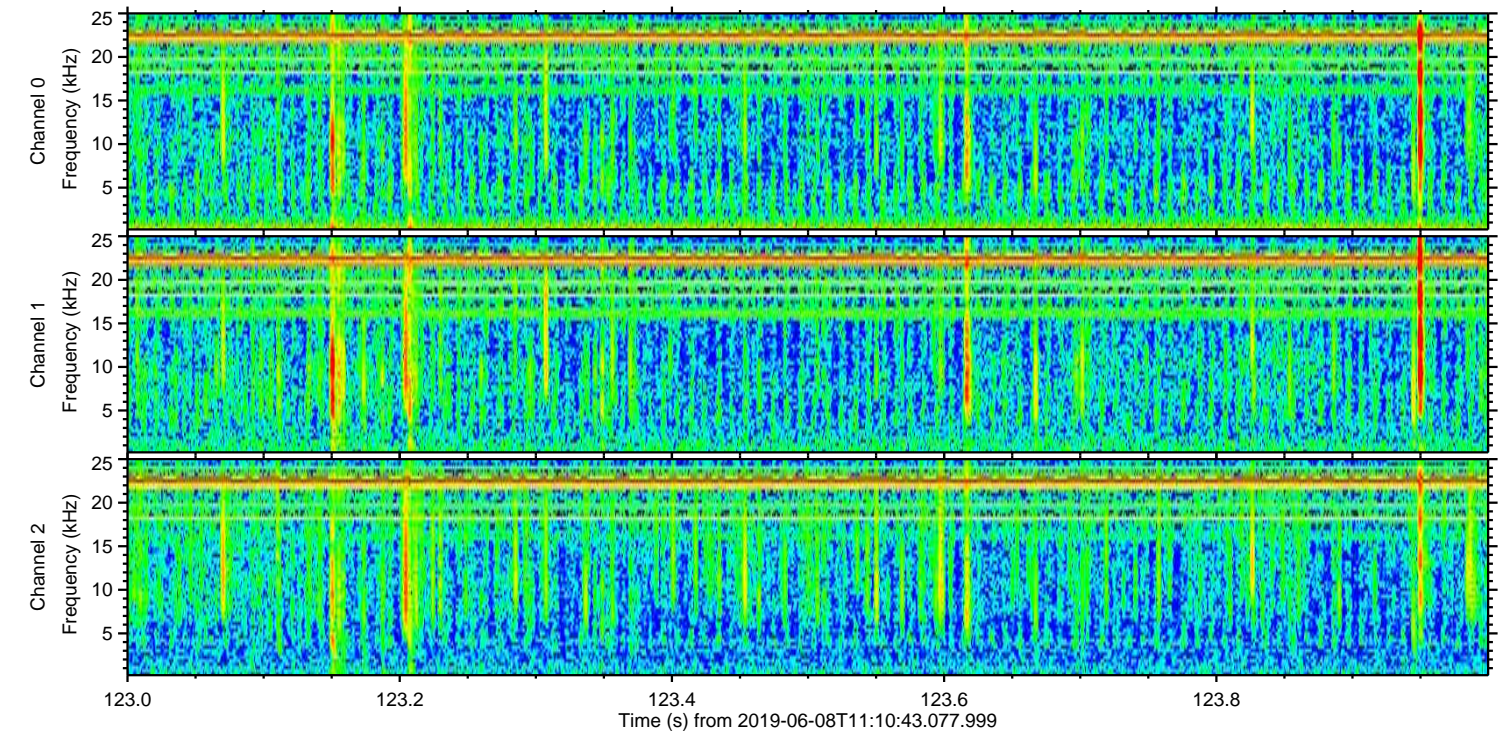
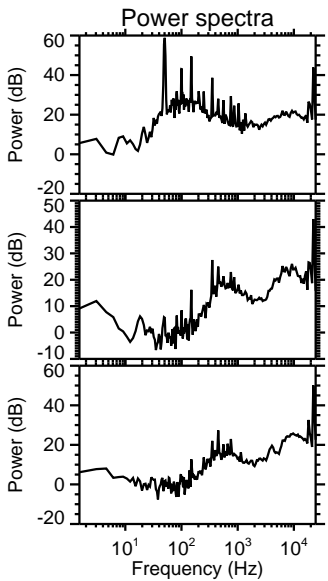
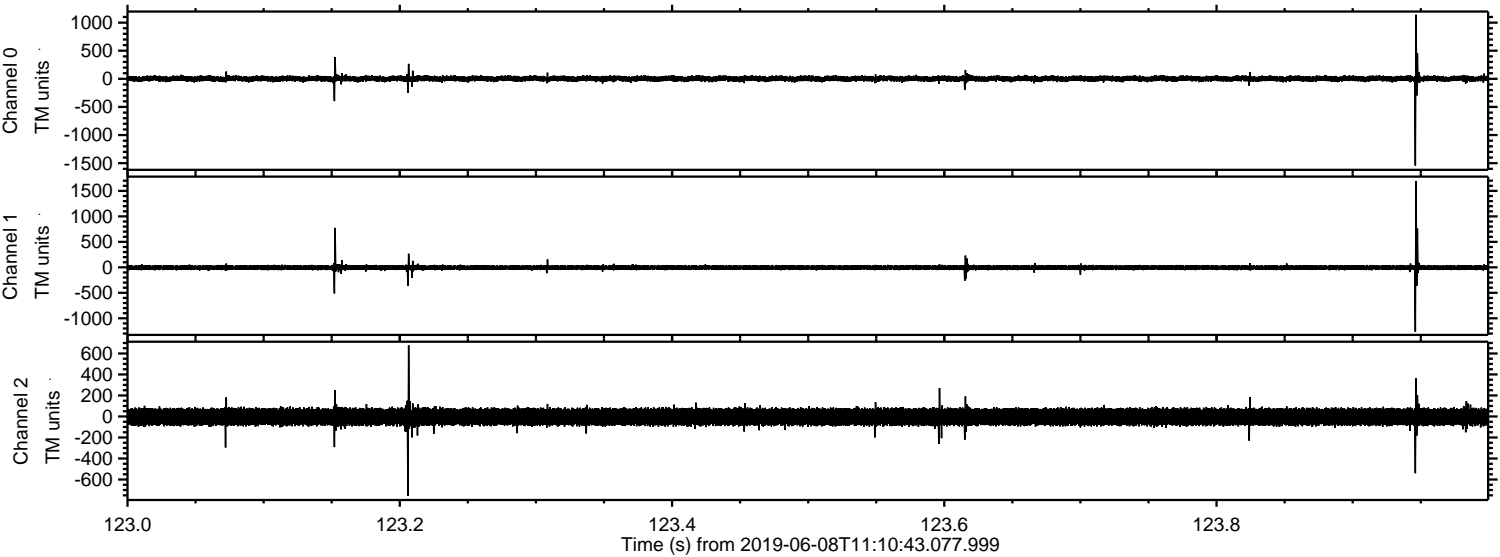
Channel 2
mn: -1961
mx: 1863
 μ : -3.5
 σ : 55.9

Processed Sat Jun 8 13:18:49 2019 by ELM ver.2012-10-06 from 001__elm20190608_111042__dat00.bin

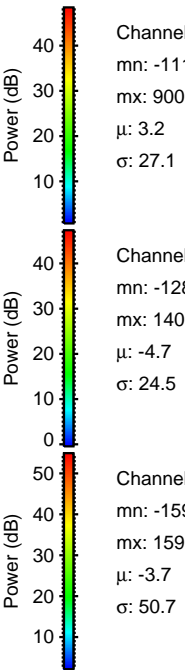
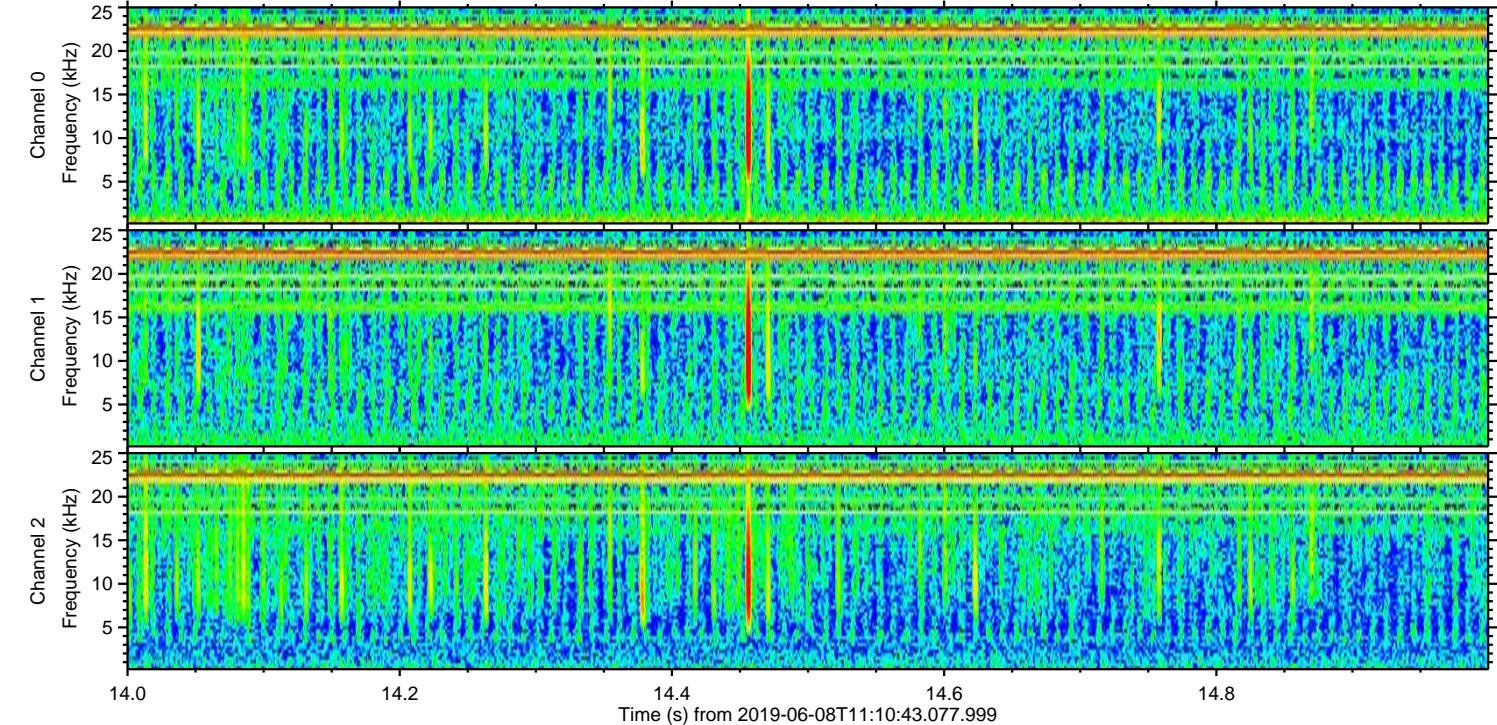
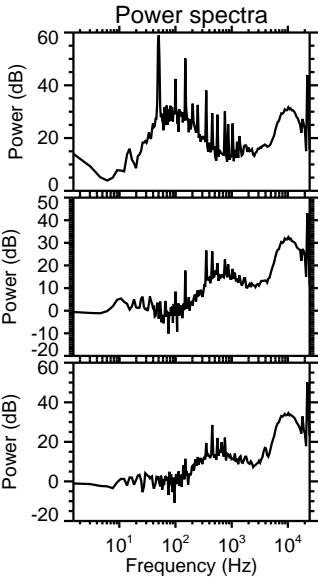
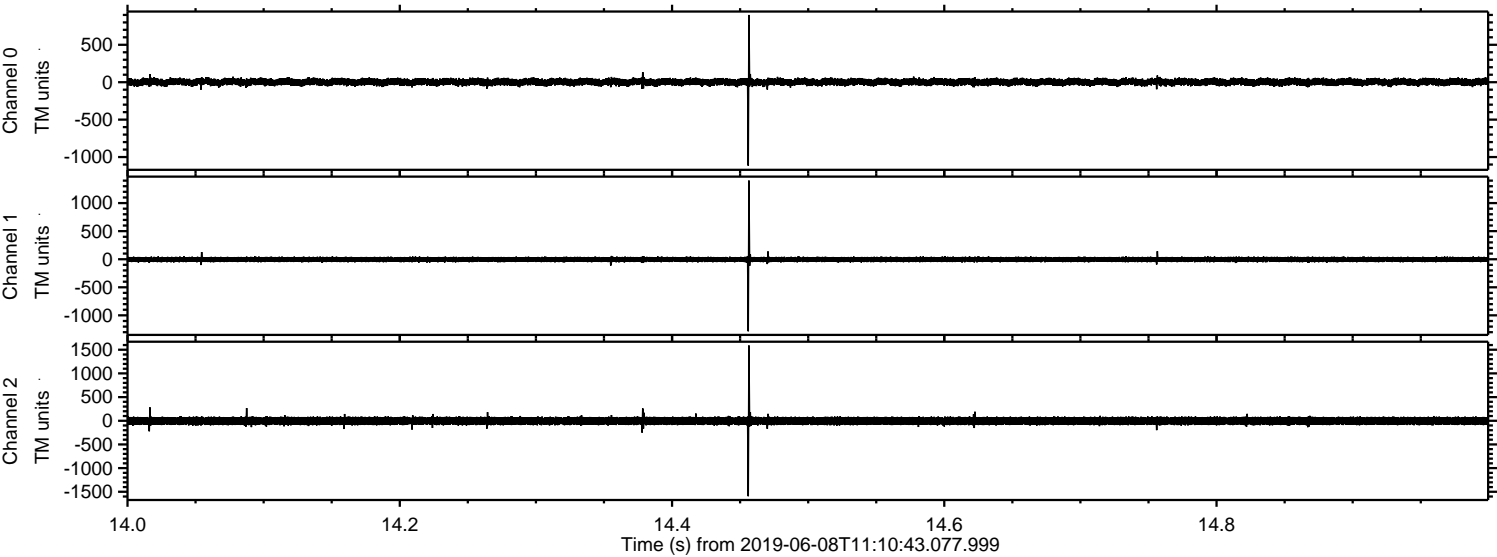


ELMAVAN 3D WAVEFORMS (Measured data sampled at 50 kHz) 50999 packets of 144 samples from 2019-06-08T11:10:43.077.999. Part 124/147

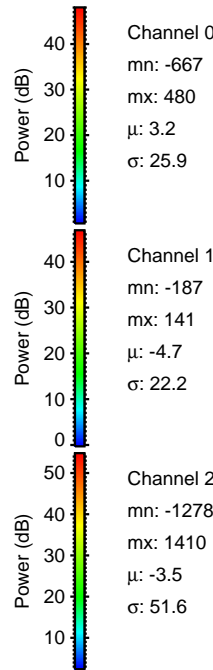
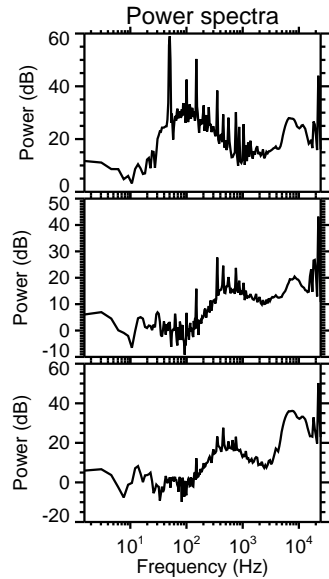
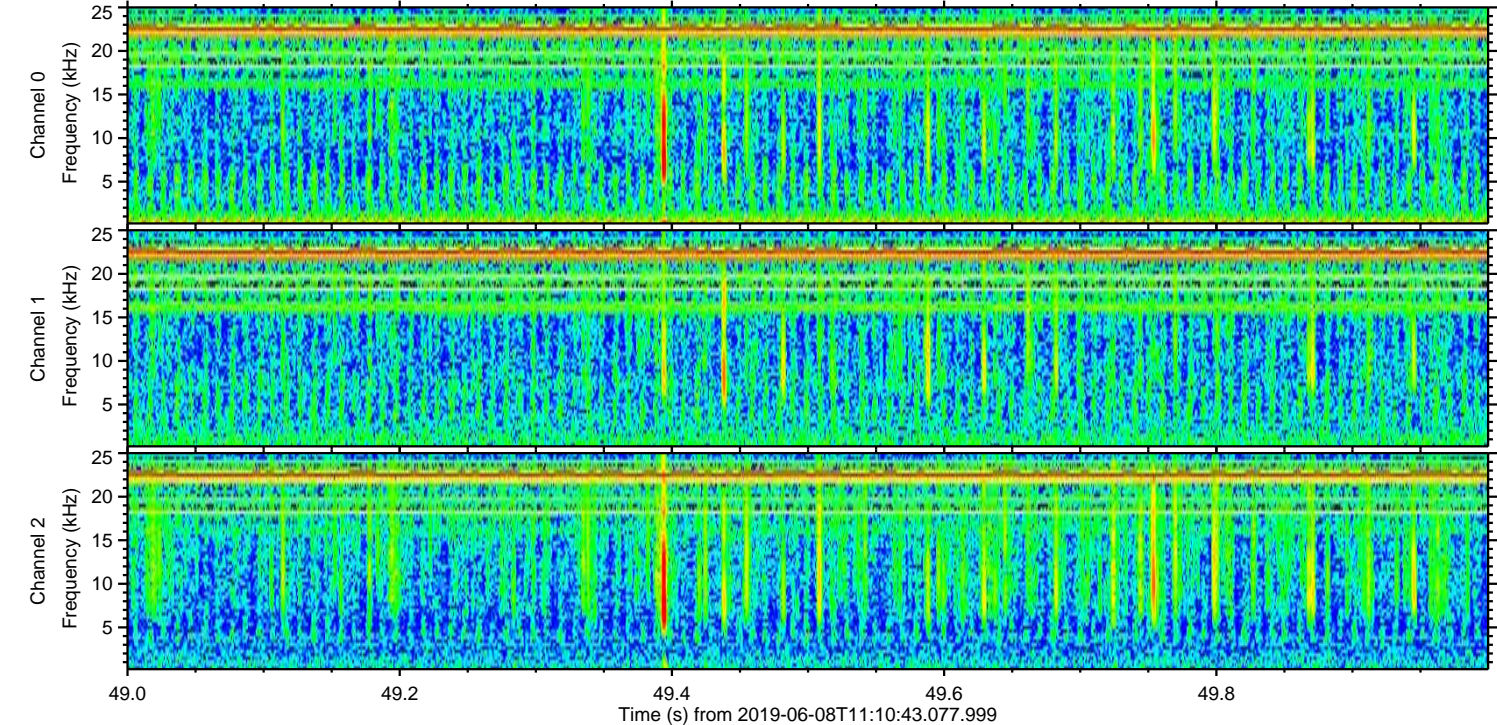
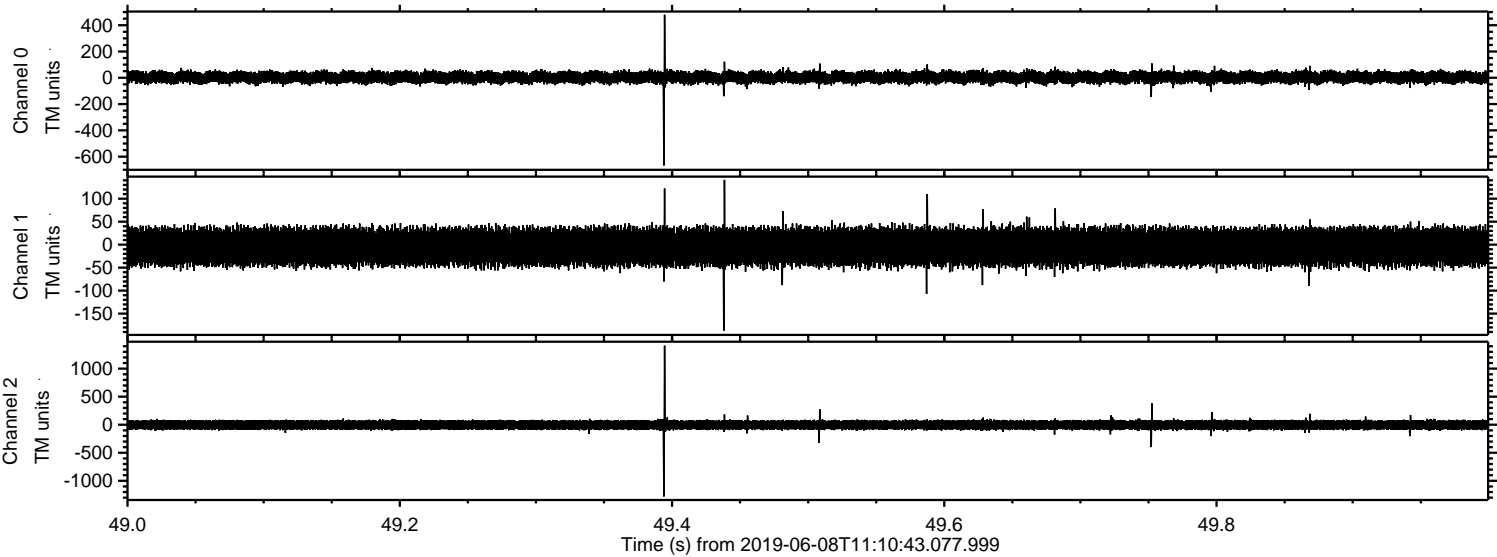
Processed Sat Jun 8 13:18:50 2019 by ELM ver.2012-10-06 from 001__elm20190608_111042__dat00.bin



Processed Sat Jun 8 13:18:51 2019 by ELM ver.2012-10-06 from 001__elm20190608_111042__dat00.bin



Processed Sat Jun 8 13:18:51 2019 by ELM ver.2012-10-06 from 001__elm20190608_111042__dat00.bin



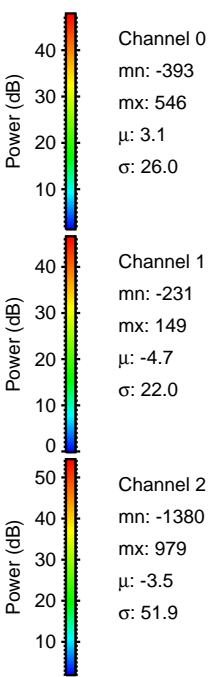
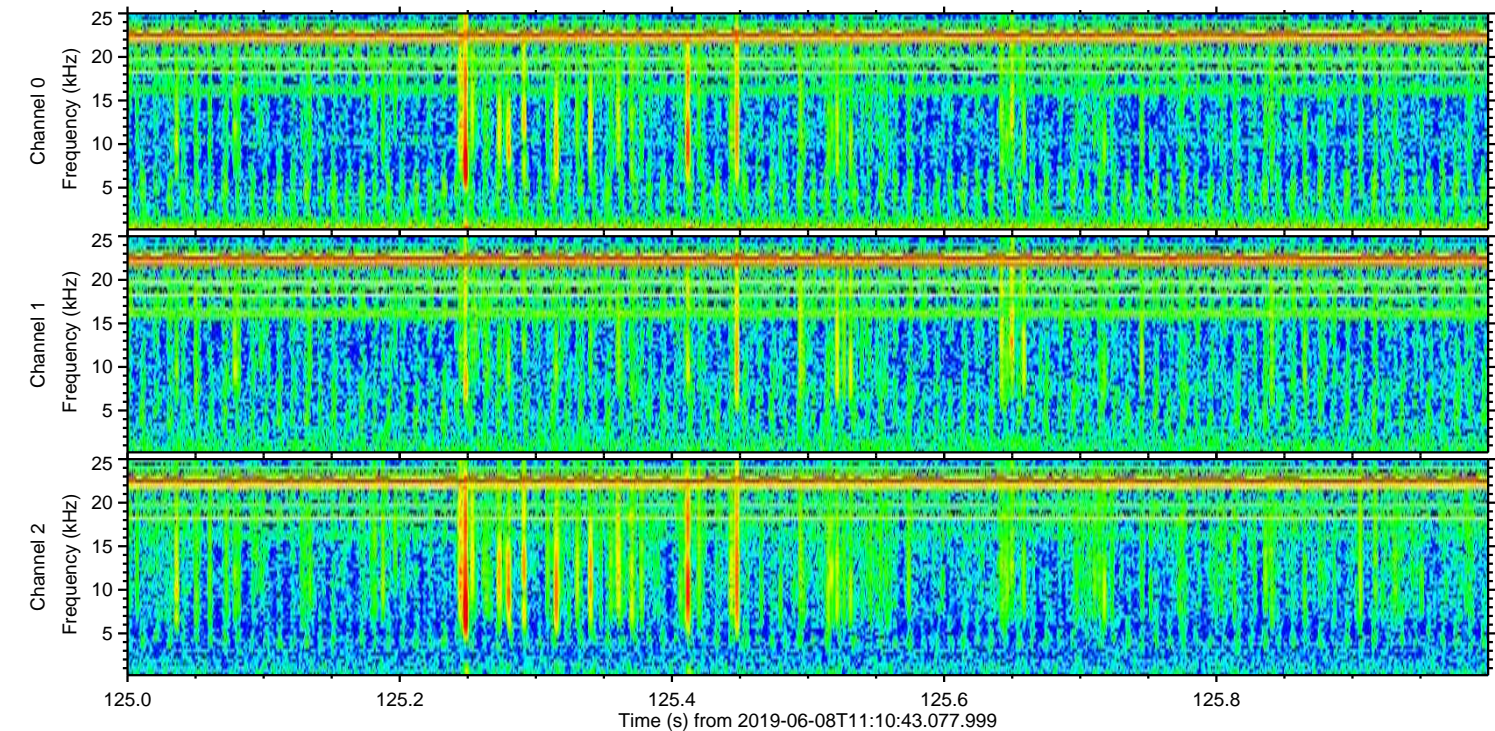
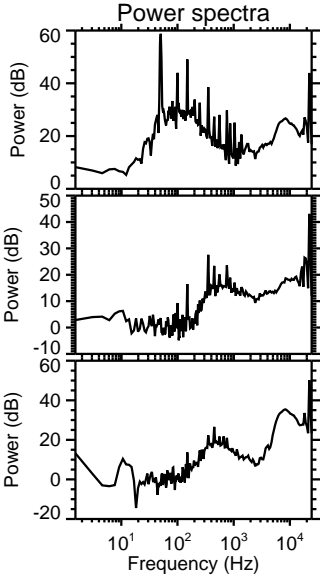
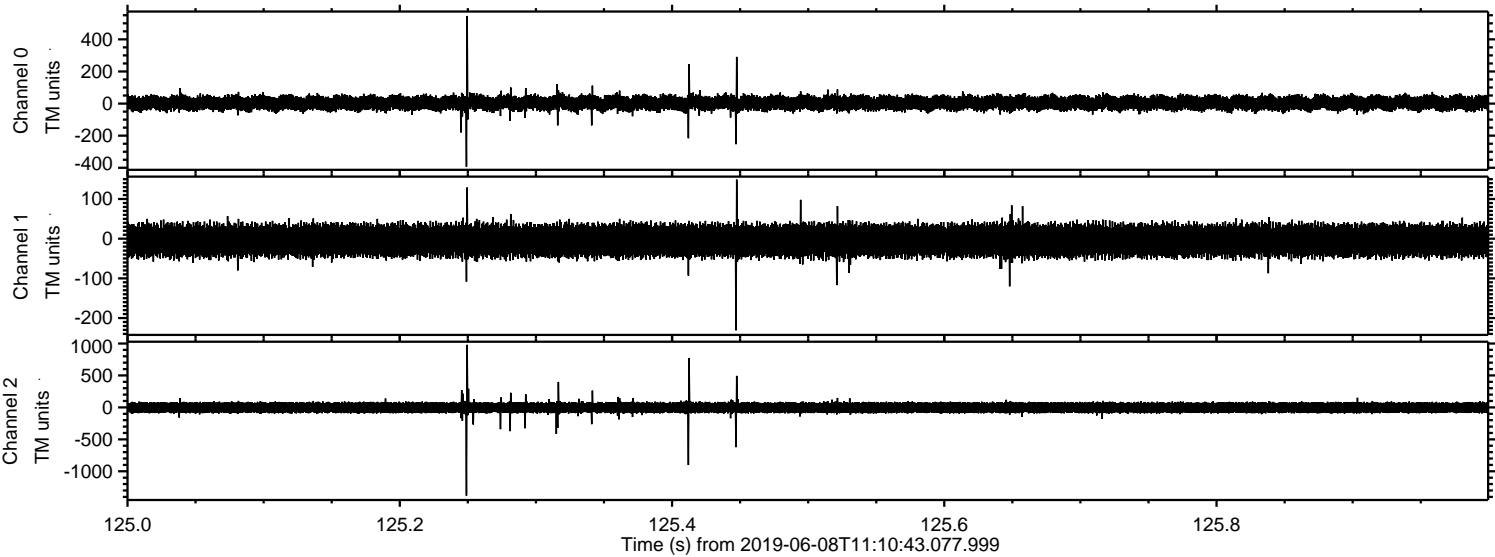
Channel 0
mn: -667
mx: 480
 μ : 3.2
 σ : 25.9

Channel 1
mn: -187
mx: 141
 μ : -4.7
 σ : 22.2

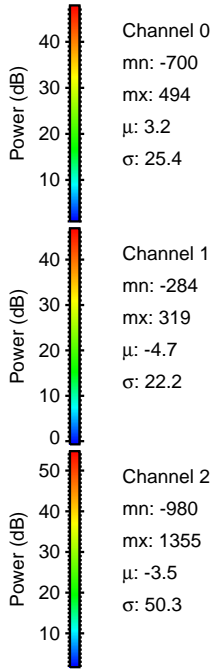
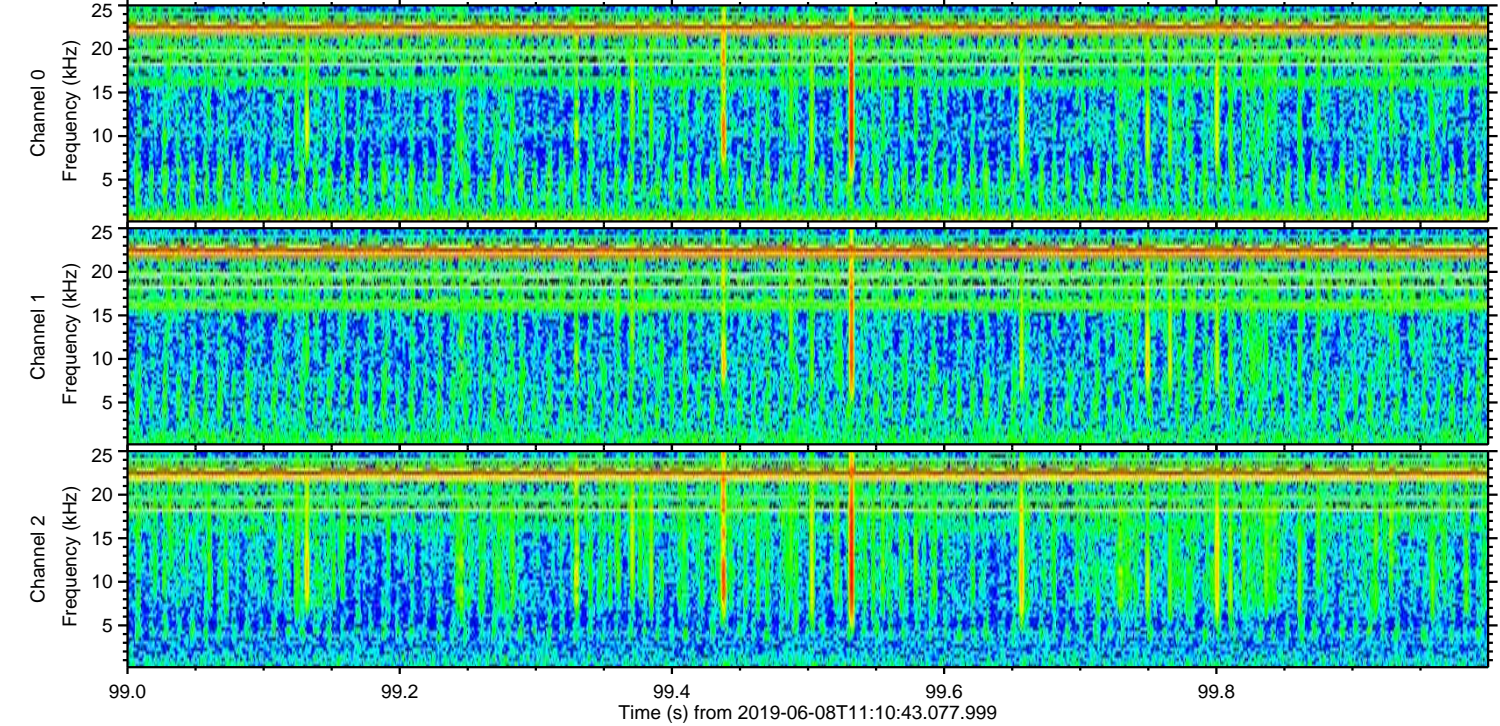
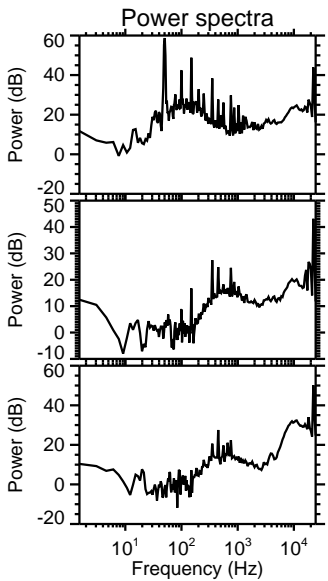
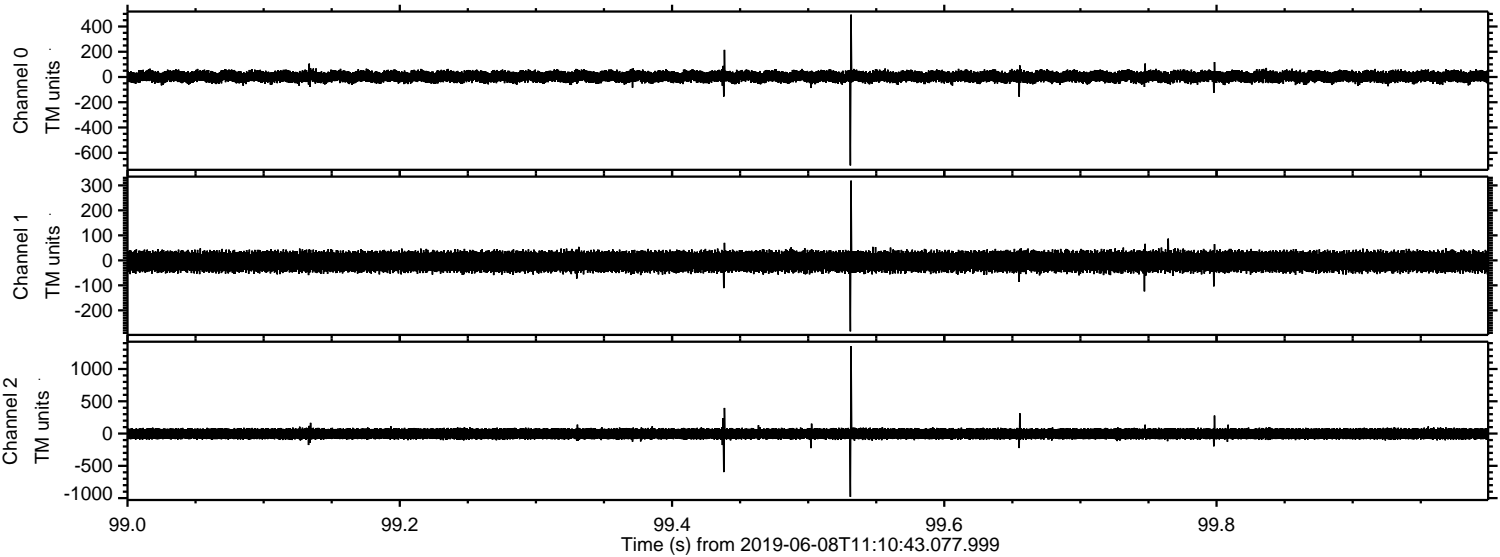
Channel 2
mn: -1278
mx: 1410
 μ : -3.5
 σ : 51.6

ELMAVAN 3D WAVEFORMS (Measured data sampled at 50 kHz) 50999 packets of 144 samples from 2019-06-08T11:10:43.077.999. Part 126/147

Processed Sat Jun 8 13:18:52 2019 by ELM ver.2012-10-06 from 001__elm20190608_111042__dat00.bin



Processed Sat Jun 8 13:18:53 2019 by ELM ver.2012-10-06 from 001__elm20190608_111042__dat00.bin



Channel 0
mn: -700
mx: 494
 μ : 3.2
 σ : 25.4

Channel 1
mn: -284
mx: 319
 μ : -4.7
 σ : 22.2

Channel 2
mn: -980
mx: 1355
 μ : -3.5
 σ : 50.3

Processed Sat Jun 8 13:18:54 2019 by ELM ver.2012-10-06 from 001__elm20190608_111042__dat00.bin

