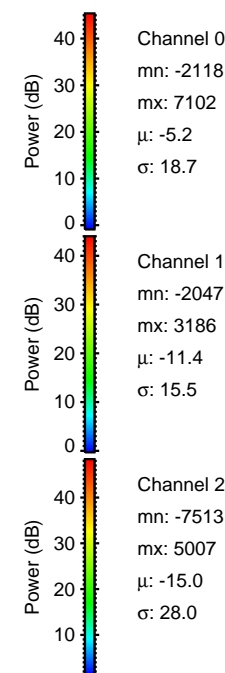
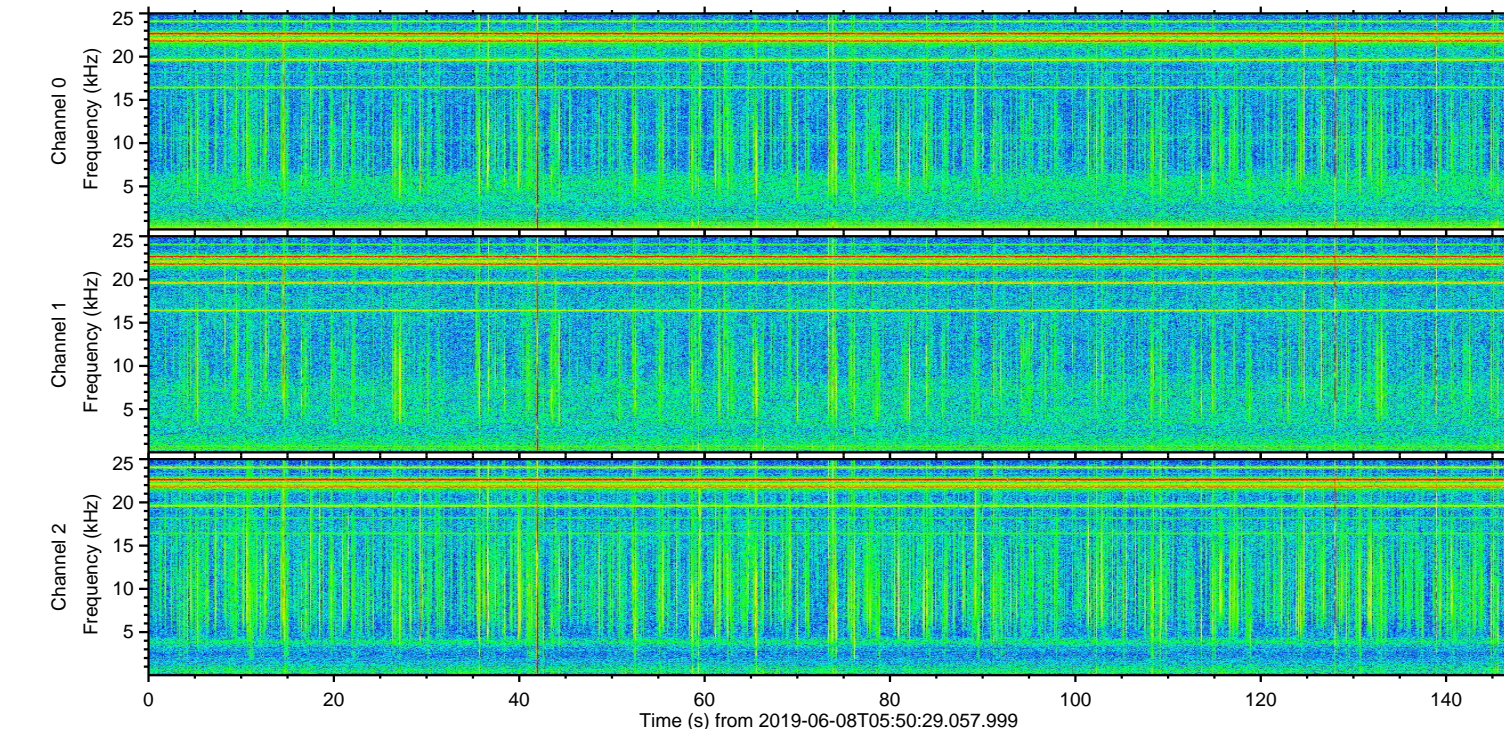
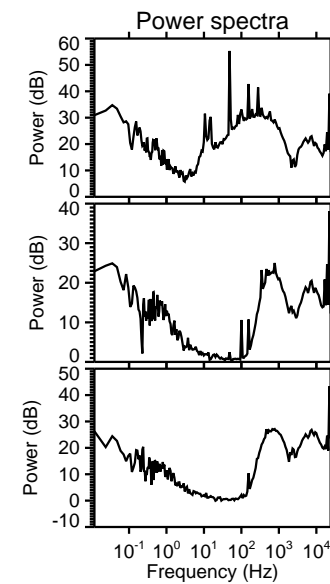
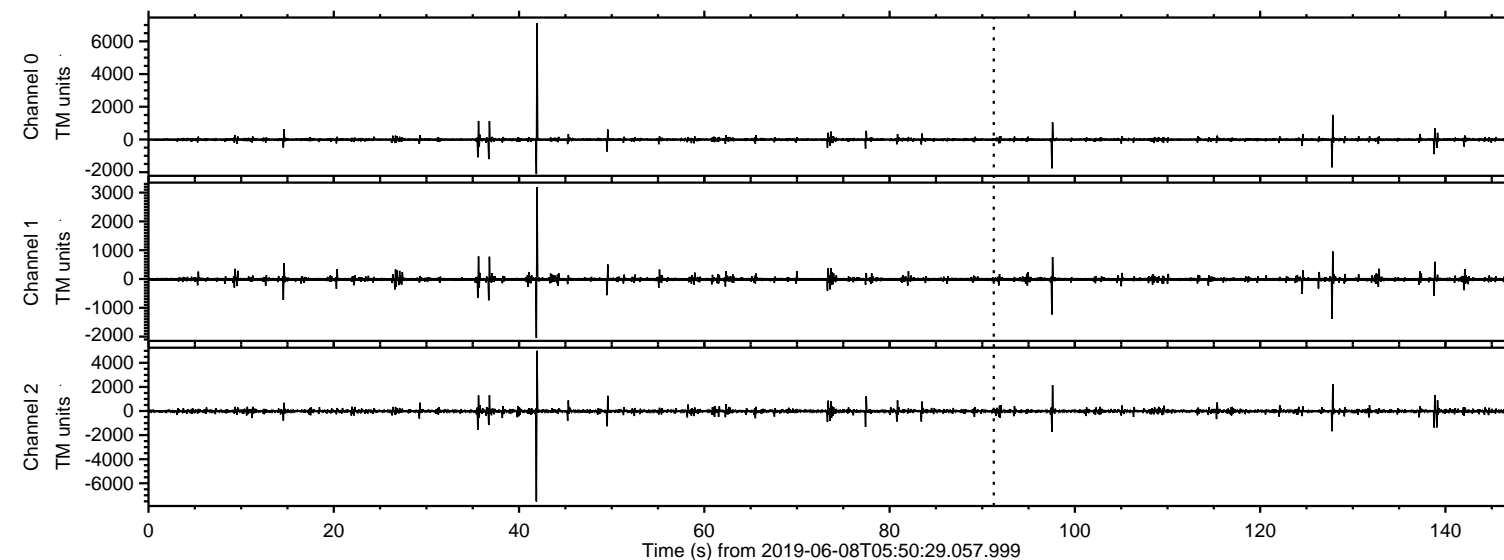
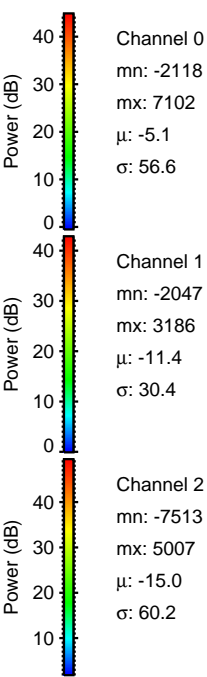
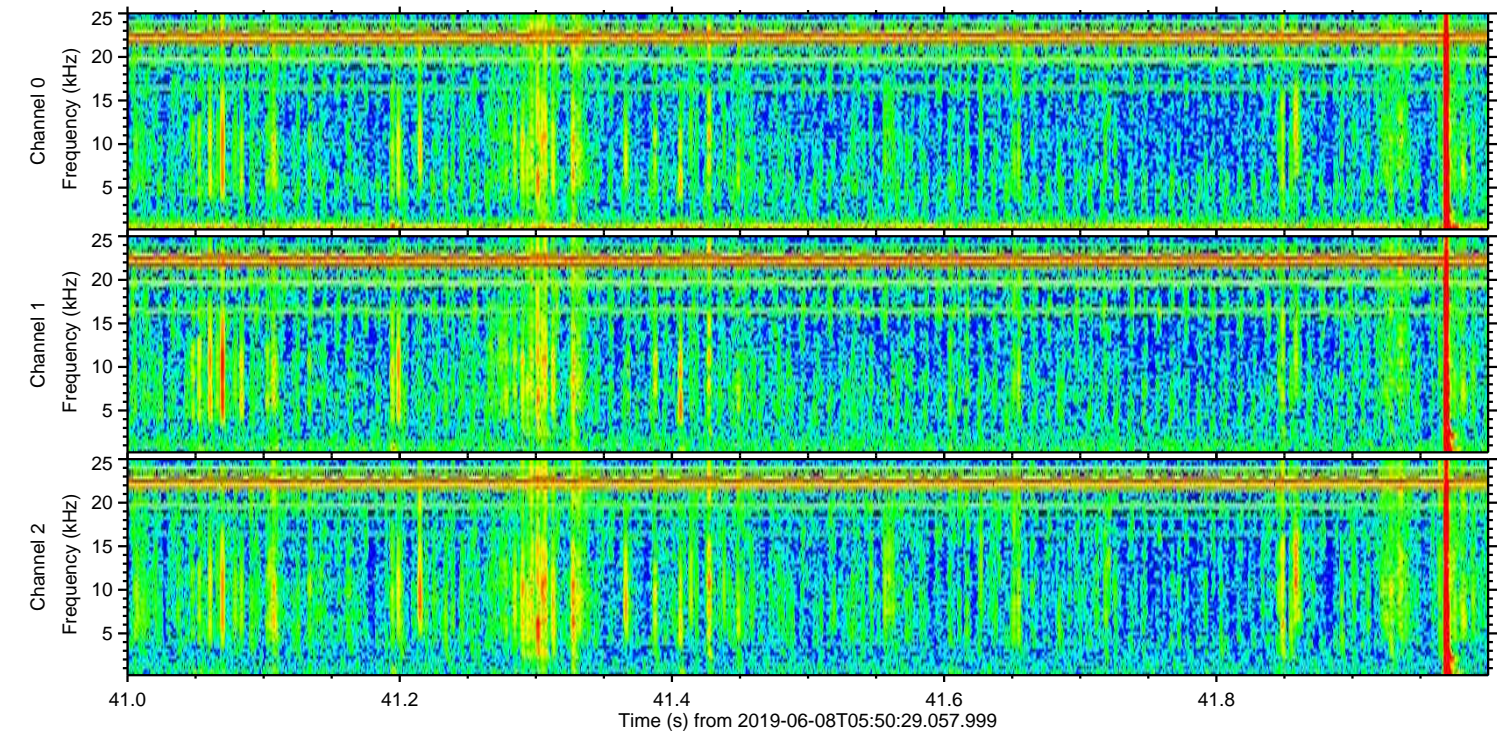
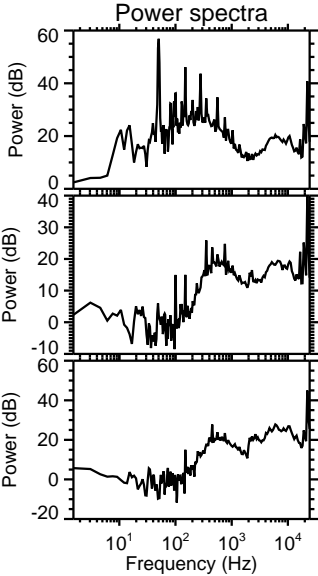
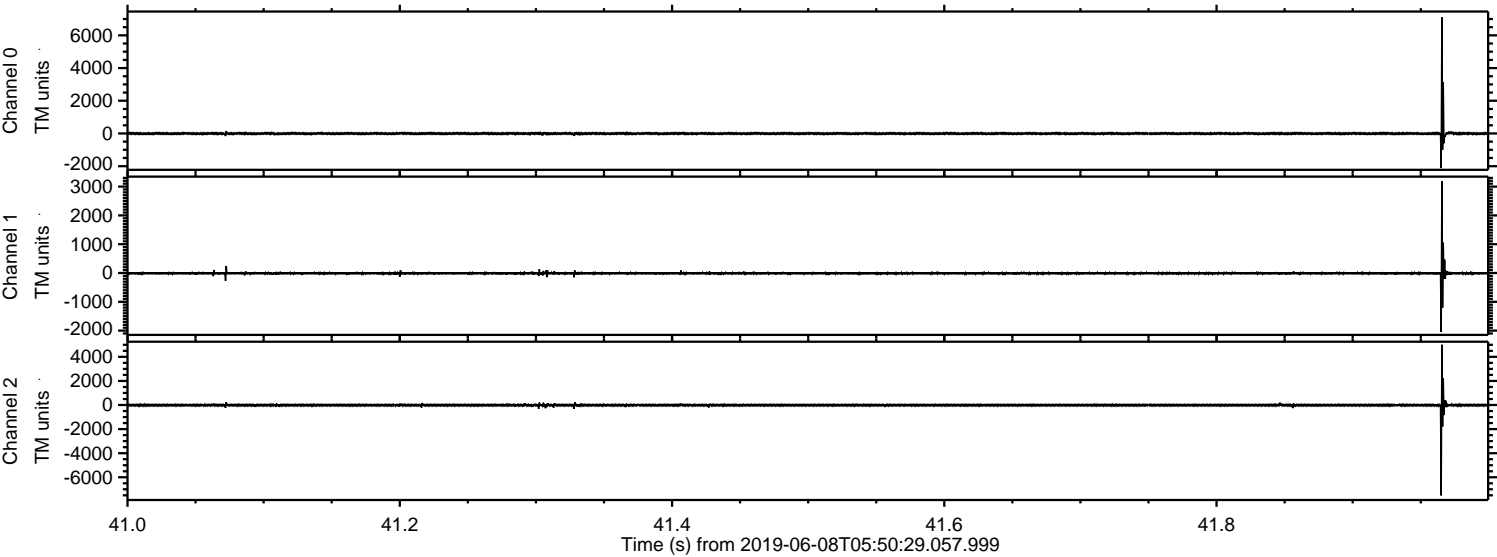


ELMAVAN 3D WAVEFORMS (Measured data sampled at 50 kHz) 50999 packets of 144 samples from 2019-06-08T05:50:29.057.999.

Processed Sat Jun 8 07:57:57 2019 by ELM ver.2012-10-06 from 001__elm20190608_055028__dat00.bin

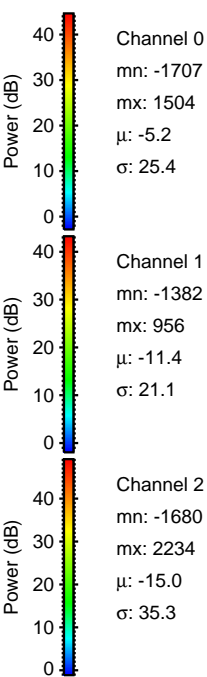
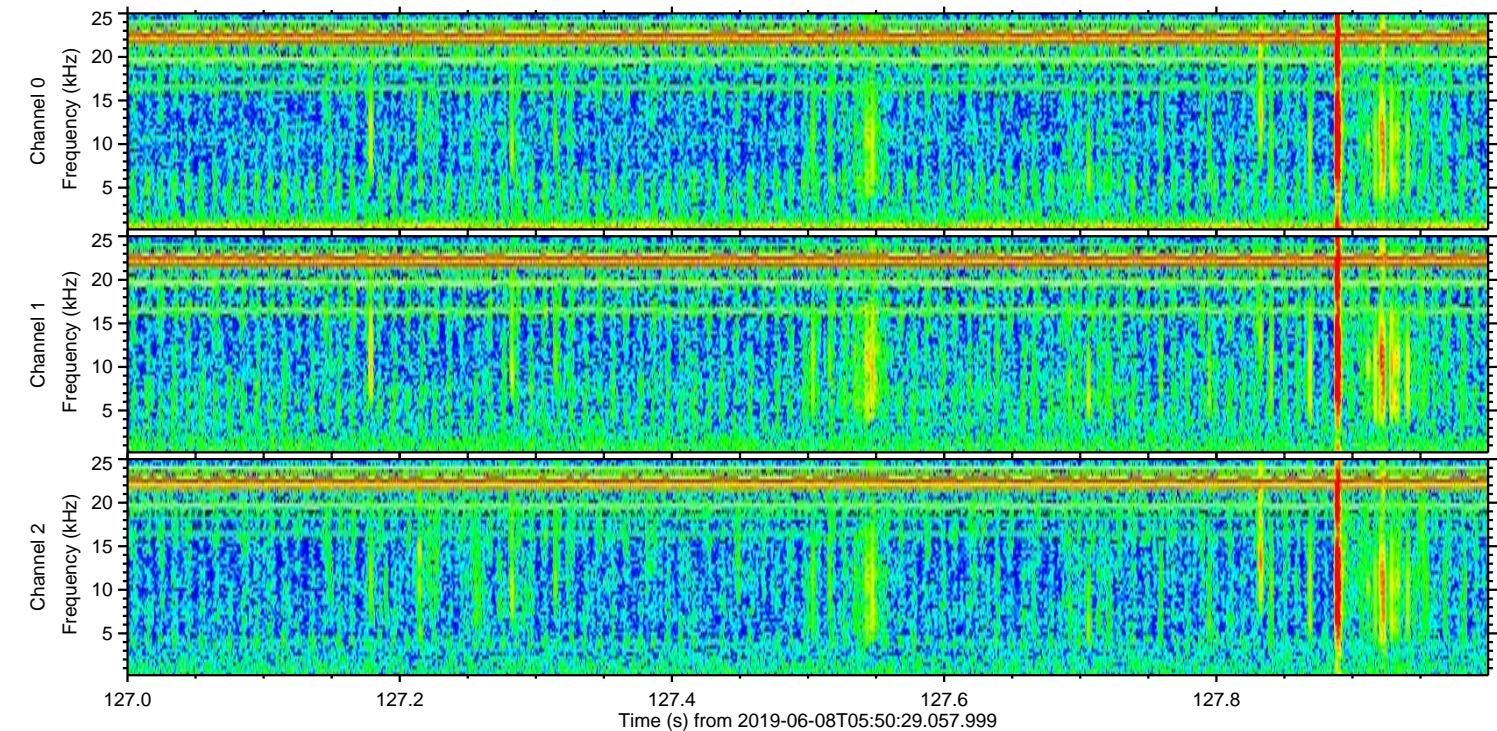
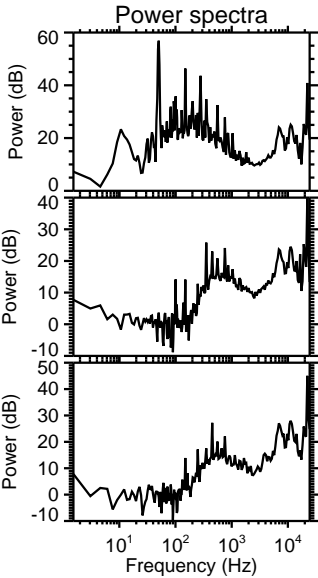
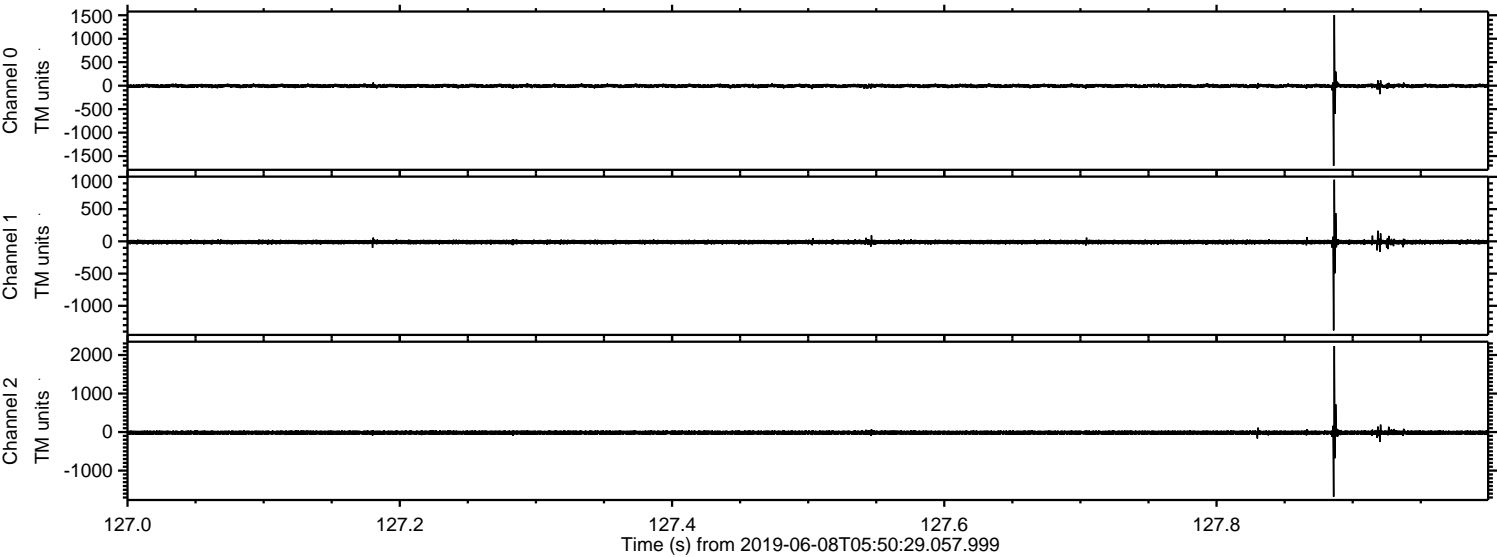


Processed Sat Jun 8 07:58:03 2019 by ELM ver.2012-10-06 from 001__elm20190608_055028__dat00.bin



ELMAVAN 3D WAVEFORMS (Measured data sampled at 50 kHz) 50999 packets of 144 samples from 2019-06-08T05:50:29.057.999. Part 128/147

Processed Sat Jun 8 07:58:04 2019 by ELM ver.2012-10-06 from 001__elm20190608_055028__dat00.bin

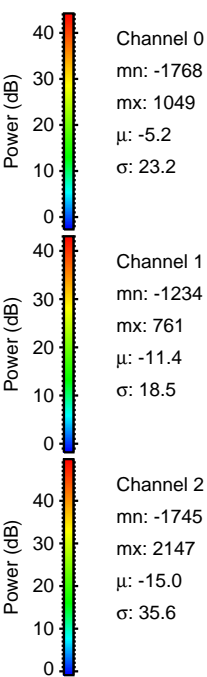
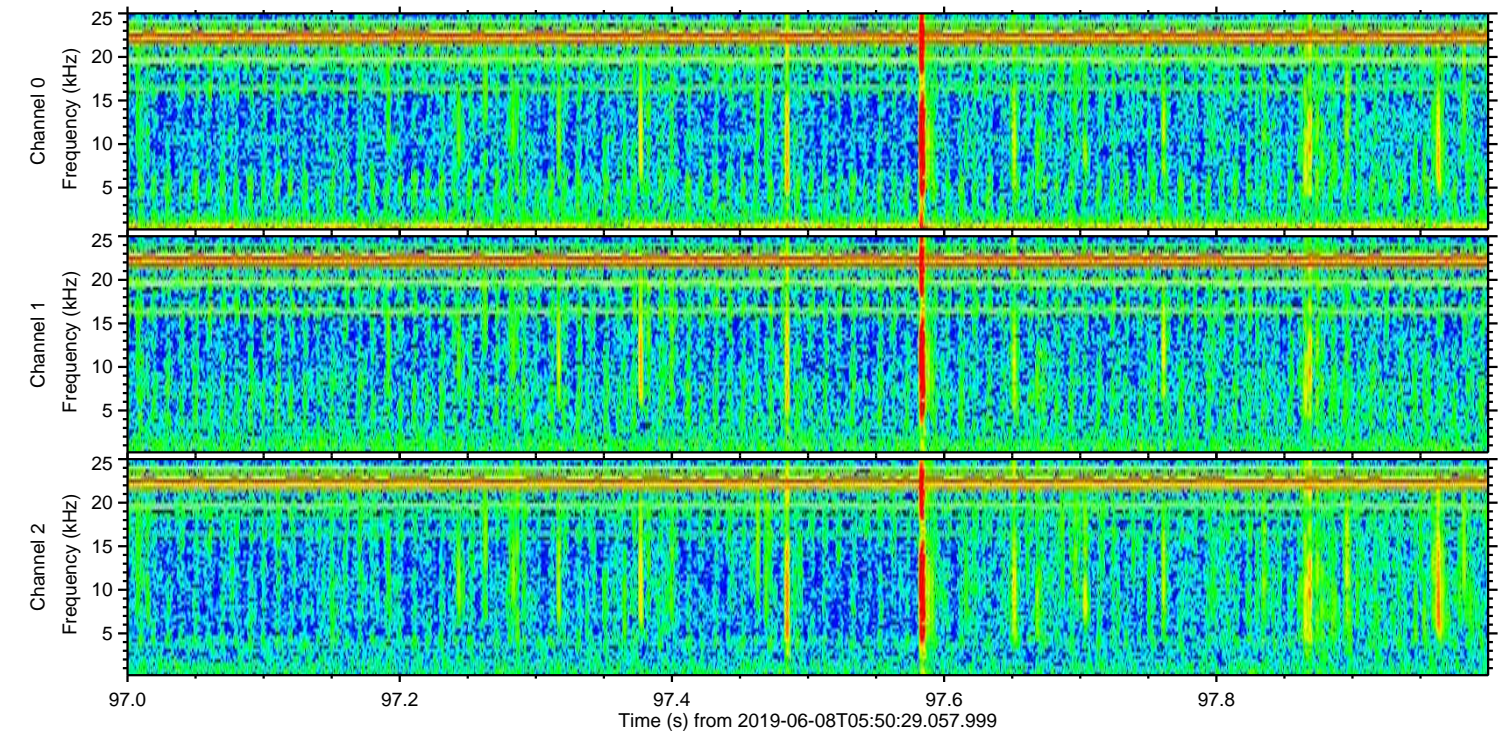
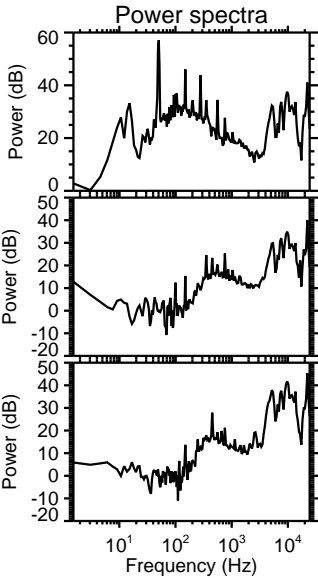
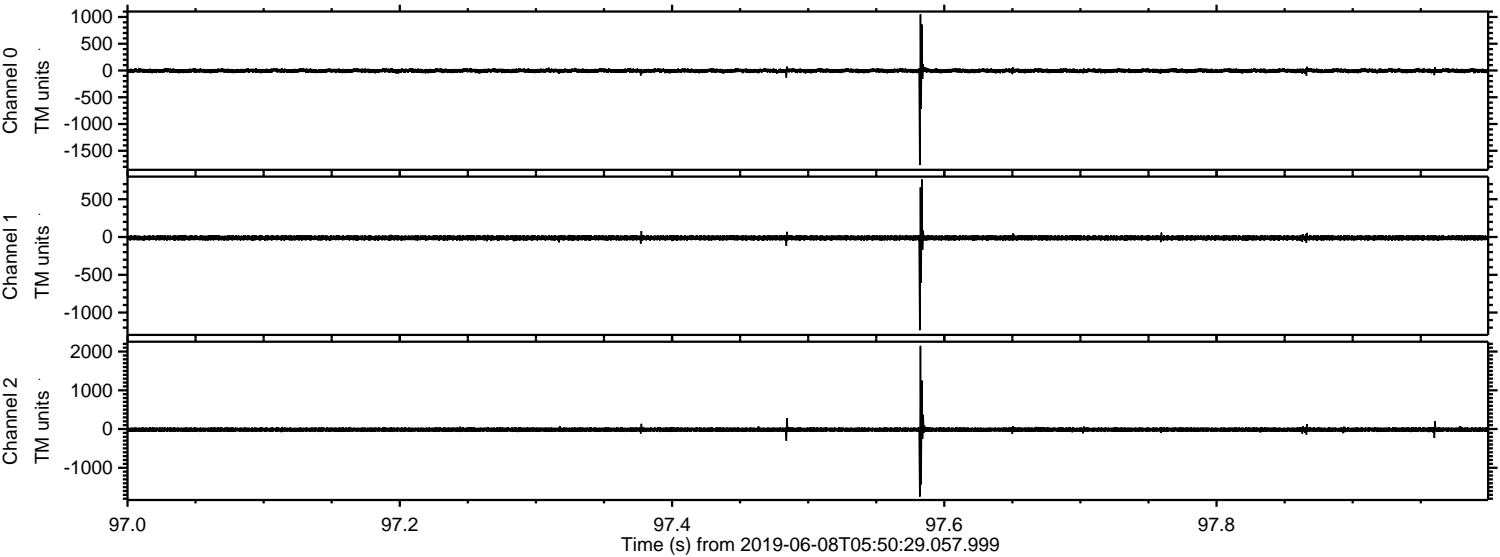


Channel 0
mn: -1707
mx: 1504
 μ : -5.2
 σ : 25.4

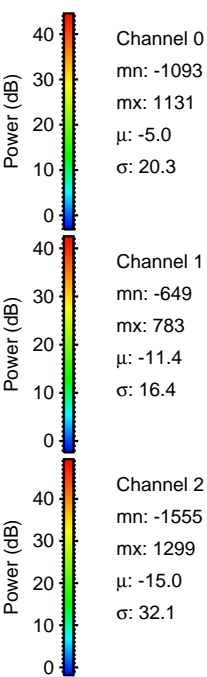
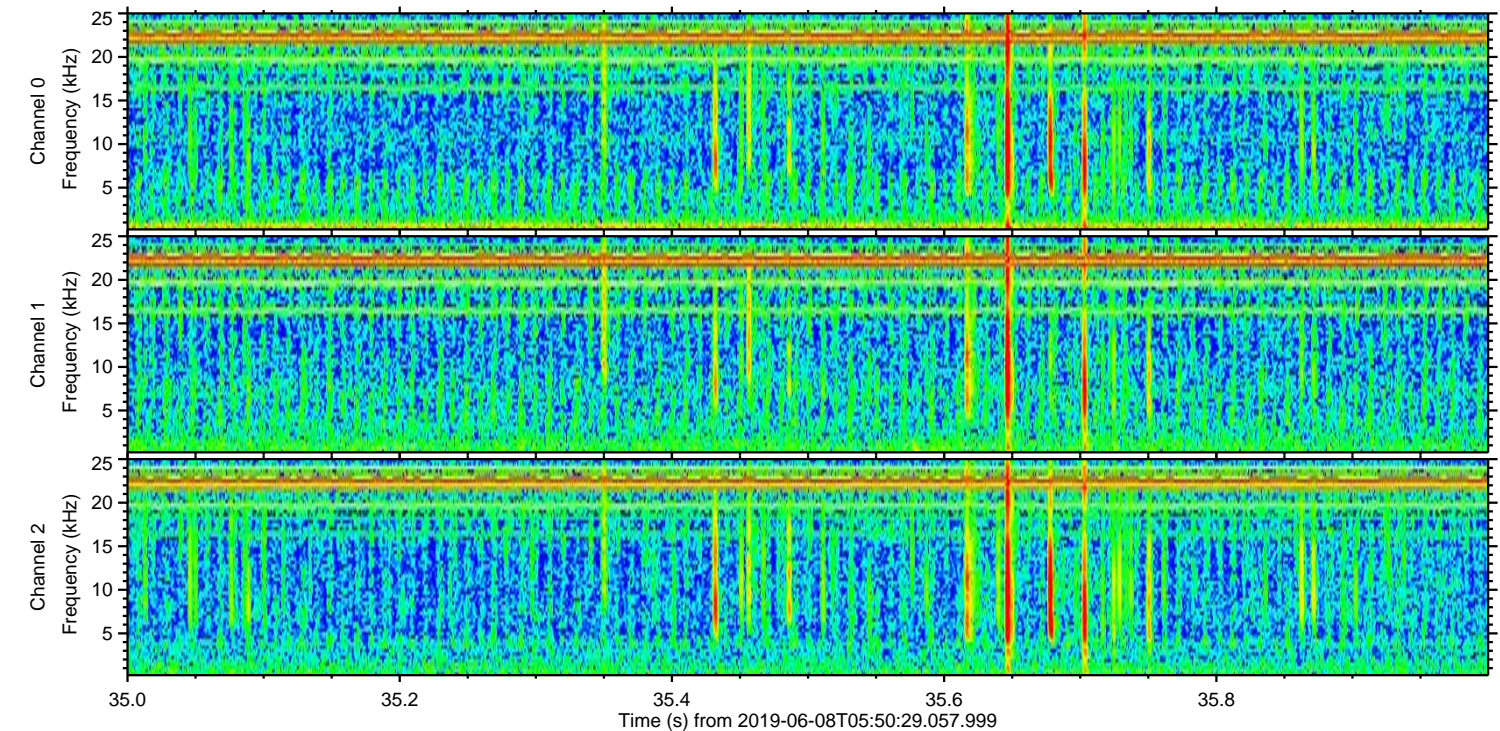
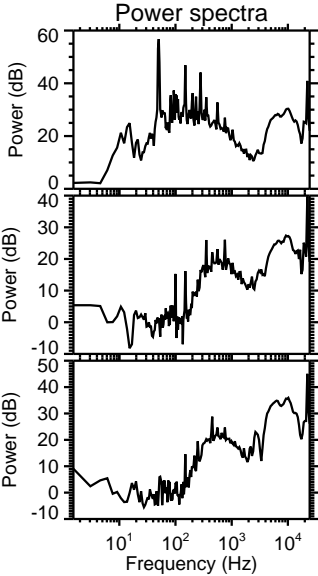
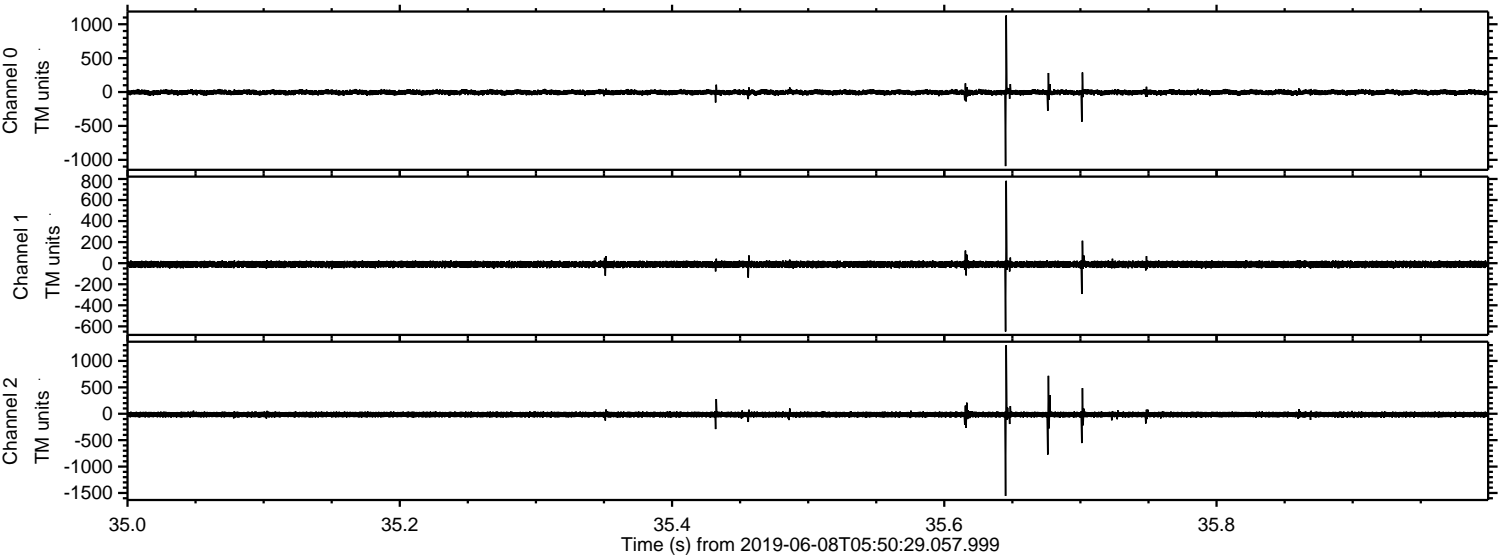
Channel 1
mn: -1382
mx: 956
 μ : -11.4
 σ : 21.1

Channel 2
mn: -1680
mx: 2234
 μ : -15.0
 σ : 35.3

Processed Sat Jun 8 07:58:04 2019 by ELM ver.2012-10-06 from 001__elm20190608_055028__dat00.bin

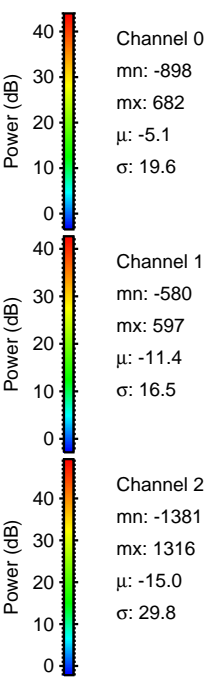
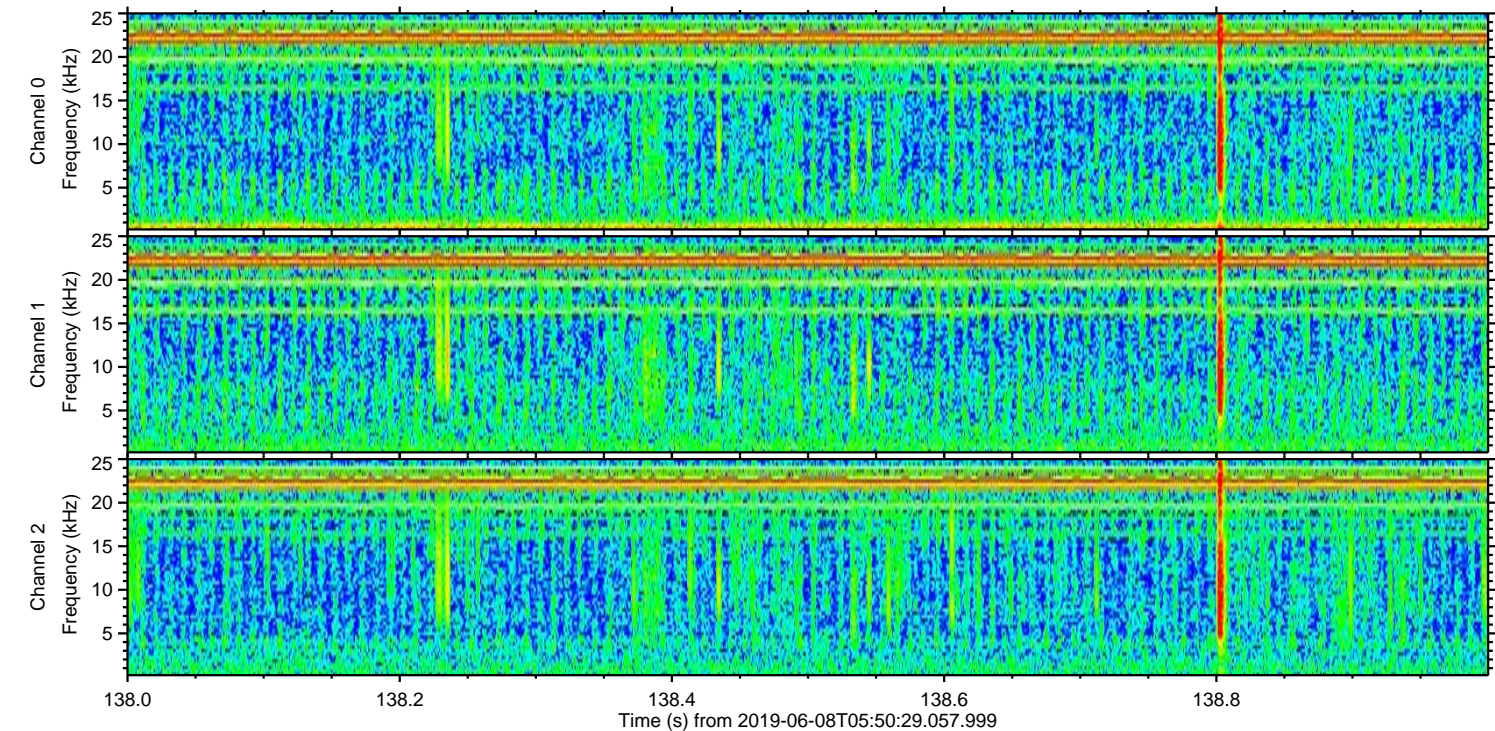
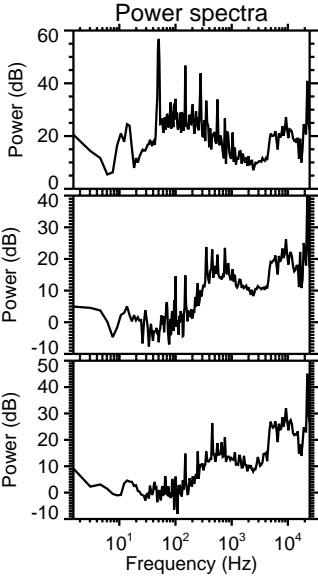
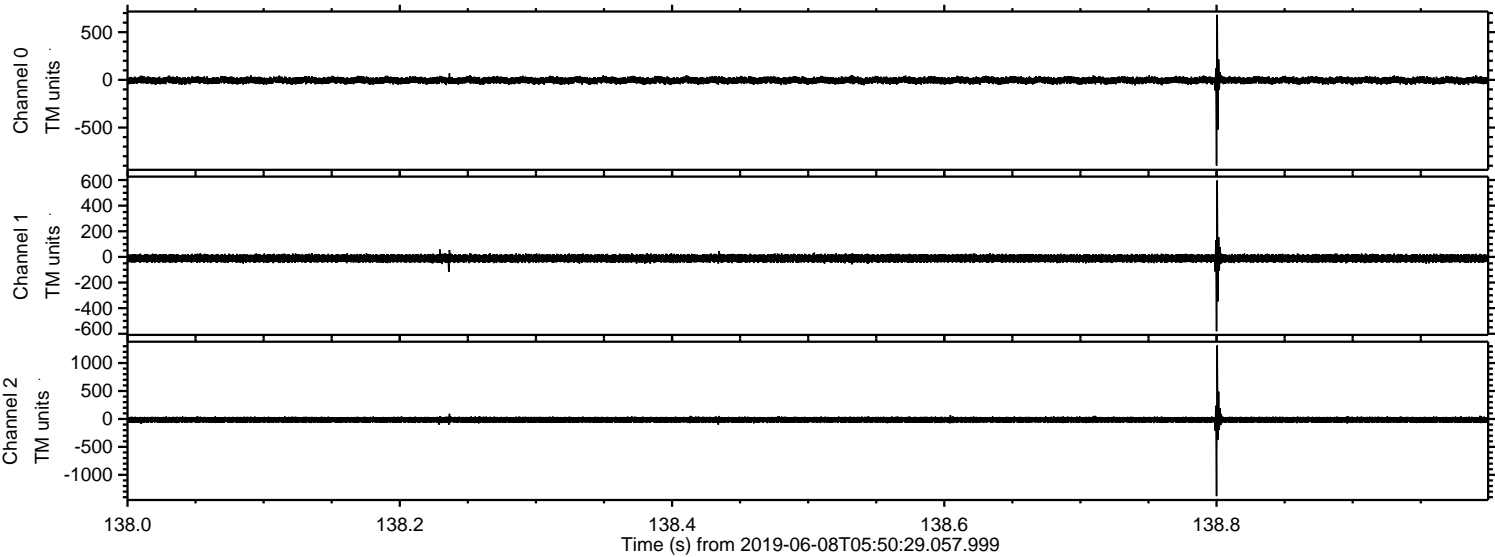


Processed Sat Jun 8 07:58:05 2019 by ELM ver.2012-10-06 from 001__elm20190608_055028__dat00.bin



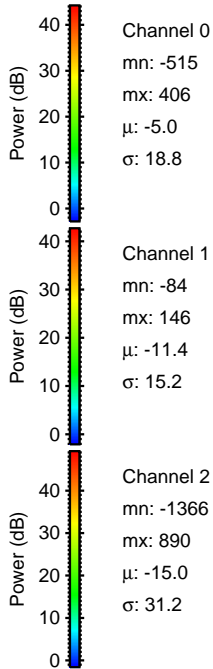
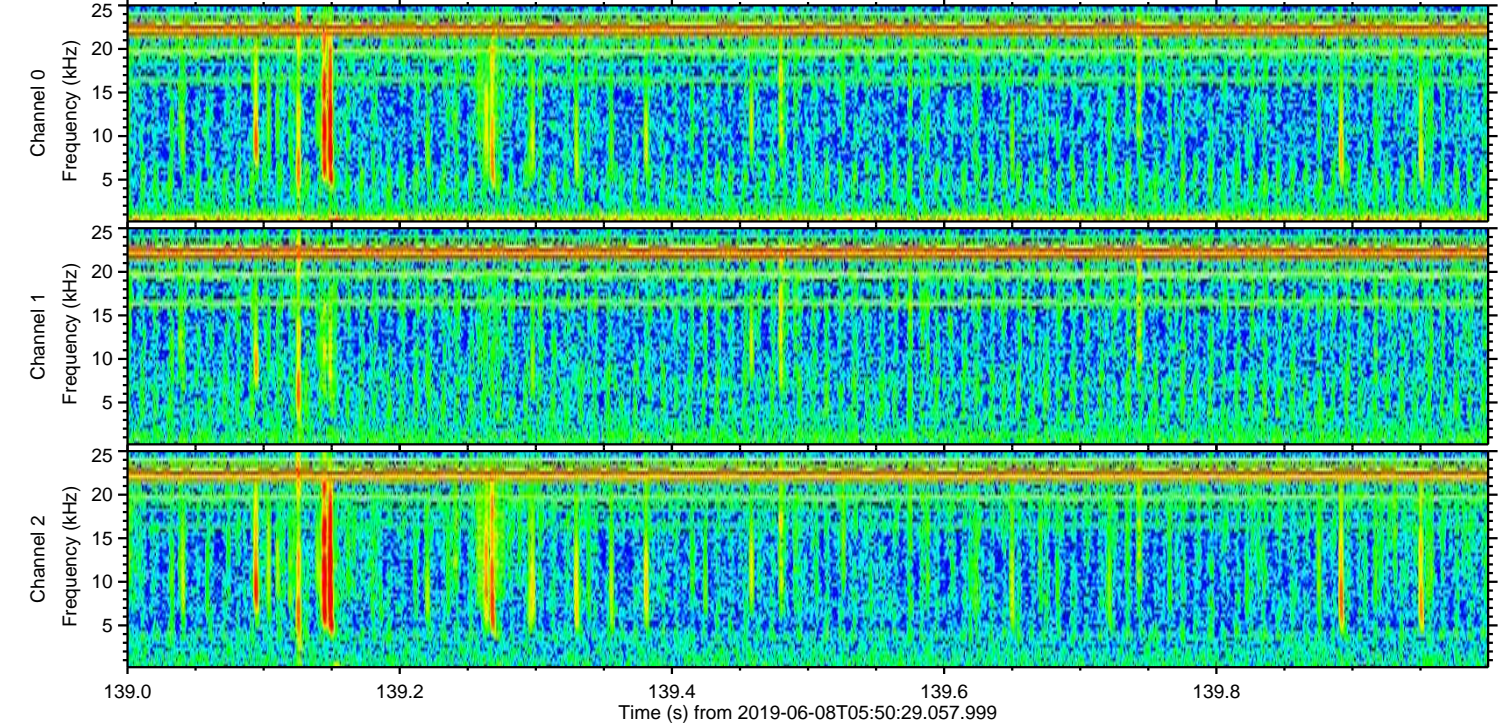
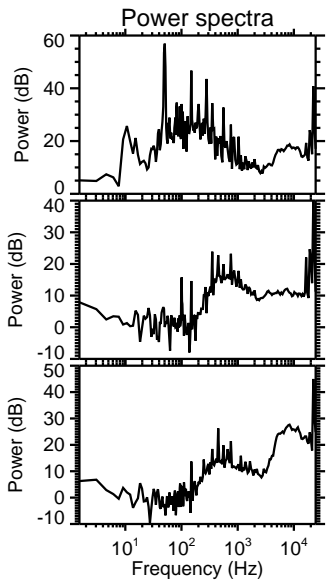
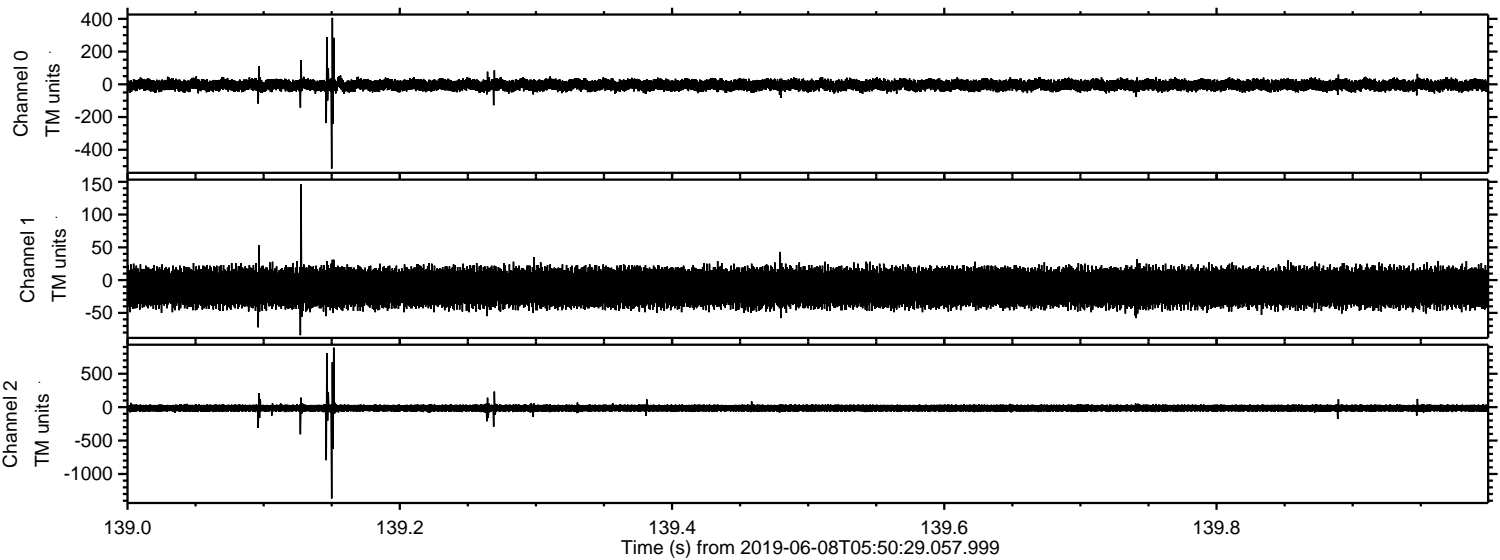
ELMAVAN 3D WAVEFORMS (Measured data sampled at 50 kHz) 50999 packets of 144 samples from 2019-06-08T05:50:29.057.999. Part 139/147

Processed Sat Jun 8 07:58:05 2019 by ELM ver.2012-10-06 from 001__elm20190608_055028__dat00.bin

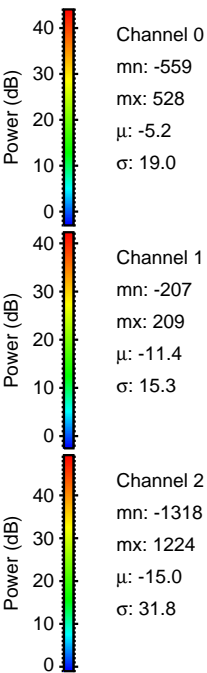
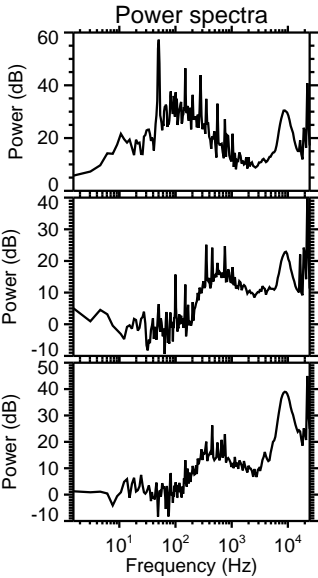
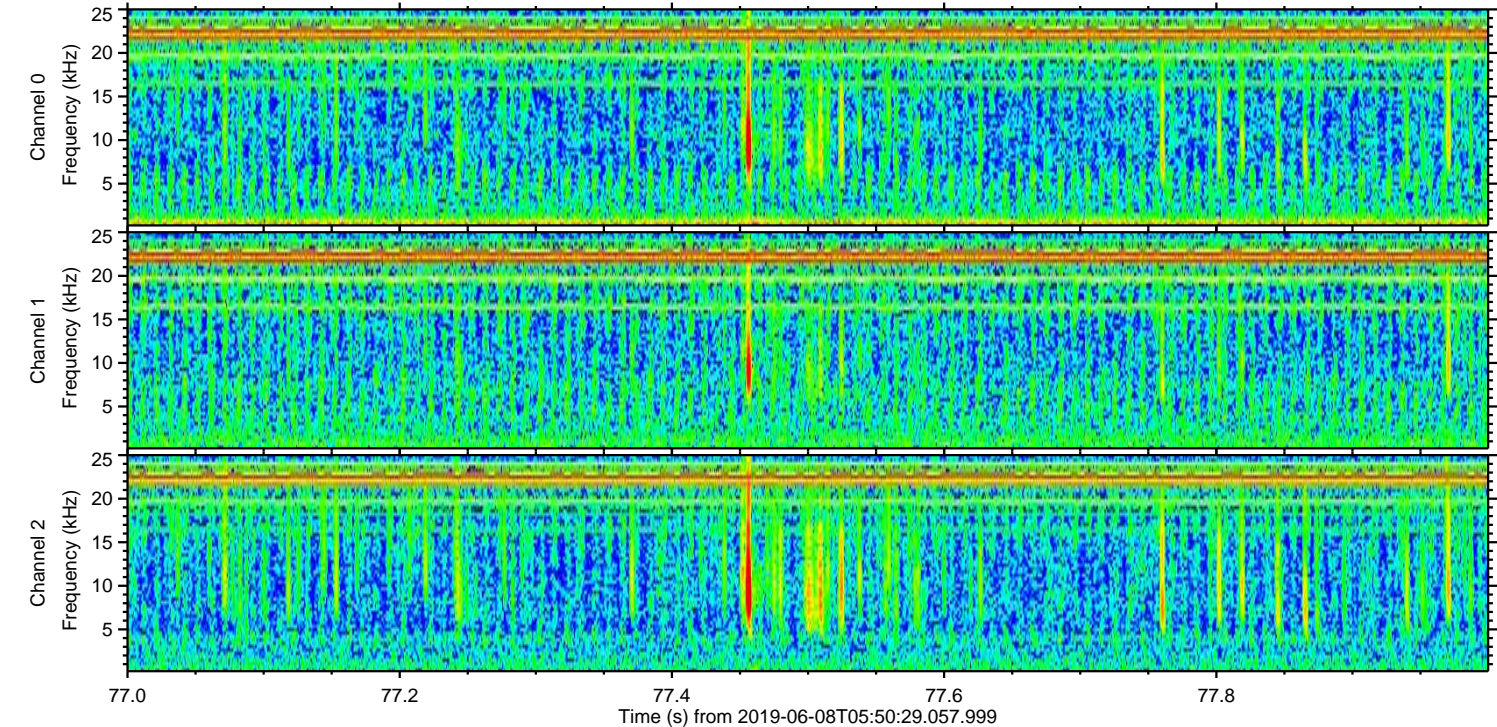
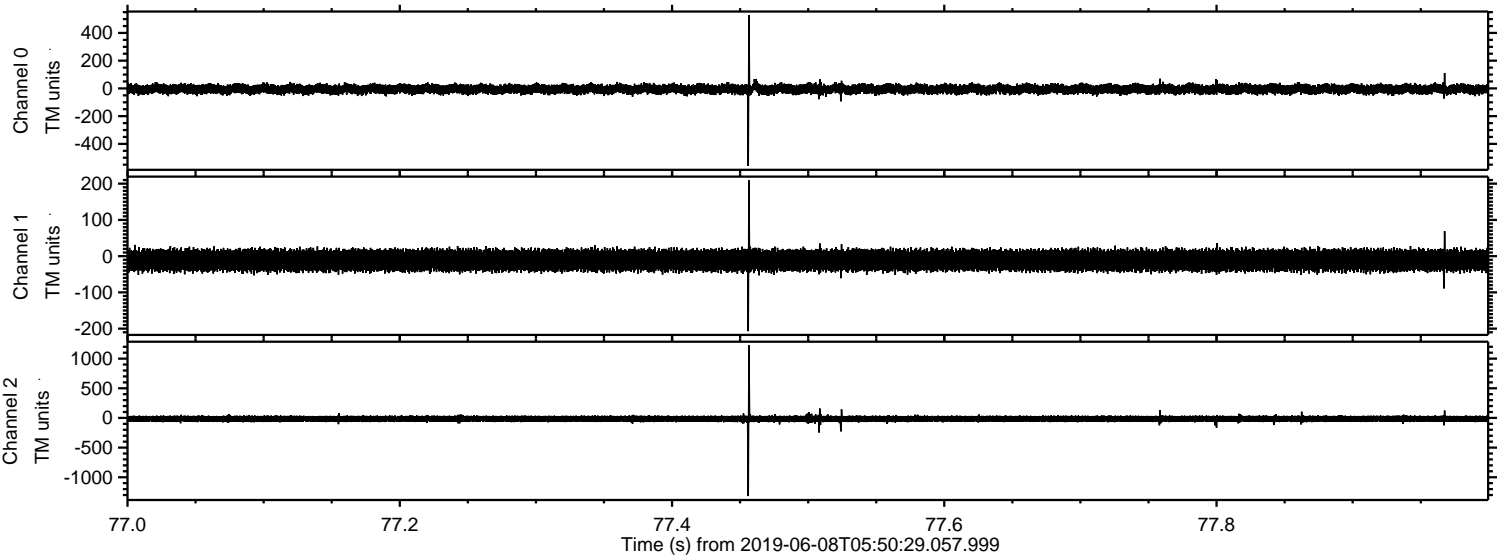


ELMAVAN 3D WAVEFORMS (Measured data sampled at 50 kHz) 50999 packets of 144 samples from 2019-06-08T05:50:29.057.999. Part 140/147

Processed Sat Jun 8 07:58:06 2019 by ELM ver.2012-10-06 from 001__elm20190608_055028__dat00.bin



Processed Sat Jun 8 07:58:07 2019 by ELM ver.2012-10-06 from 001__elm20190608_055028__dat00.bin

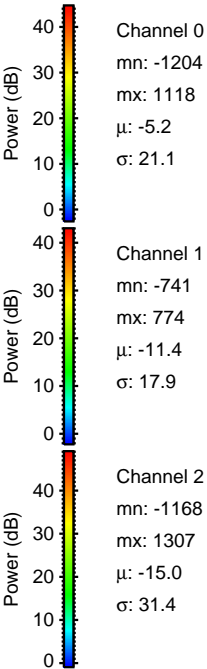
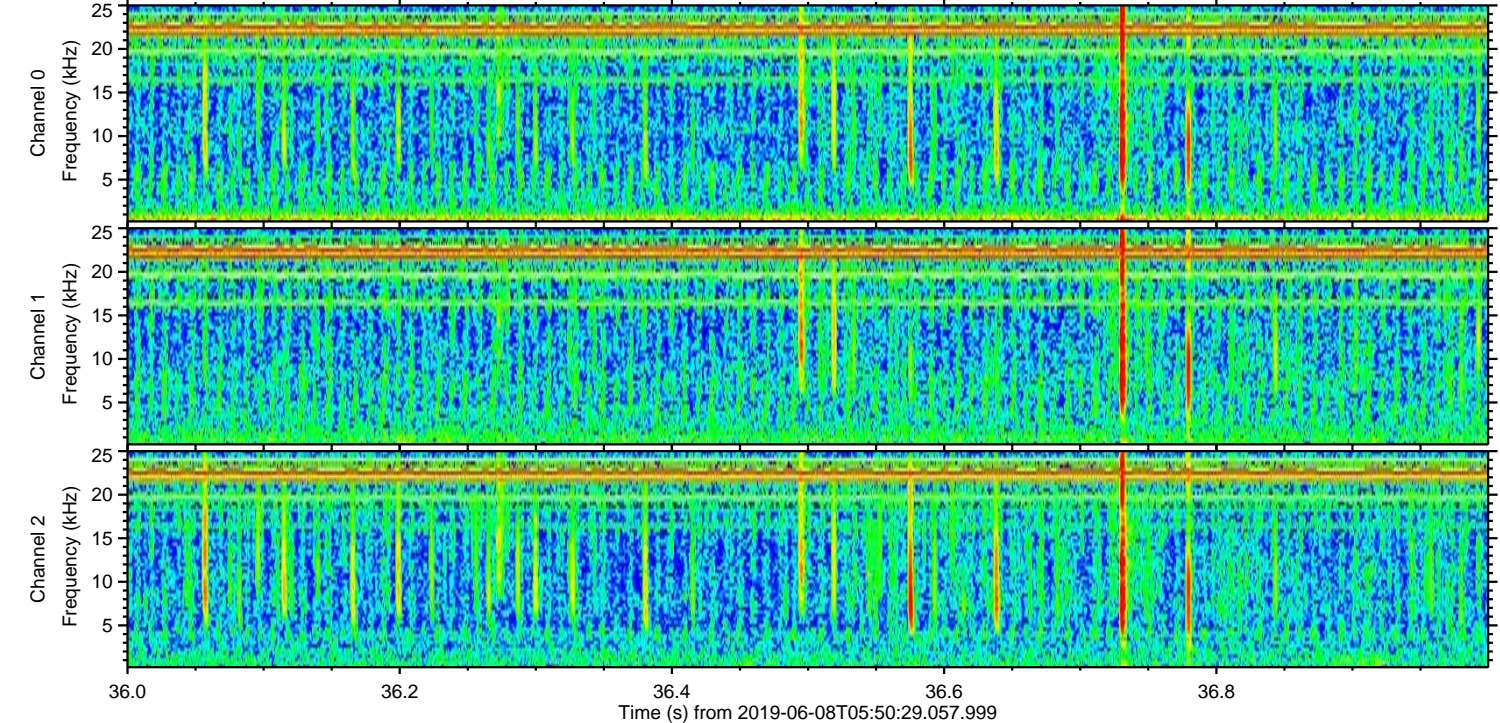
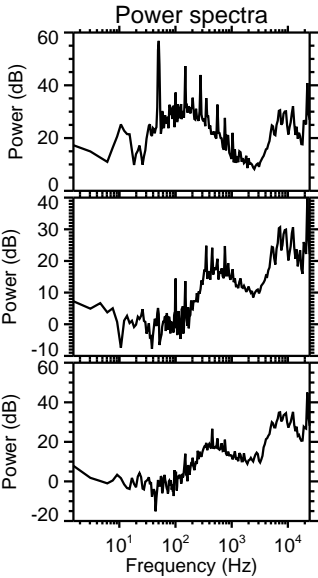
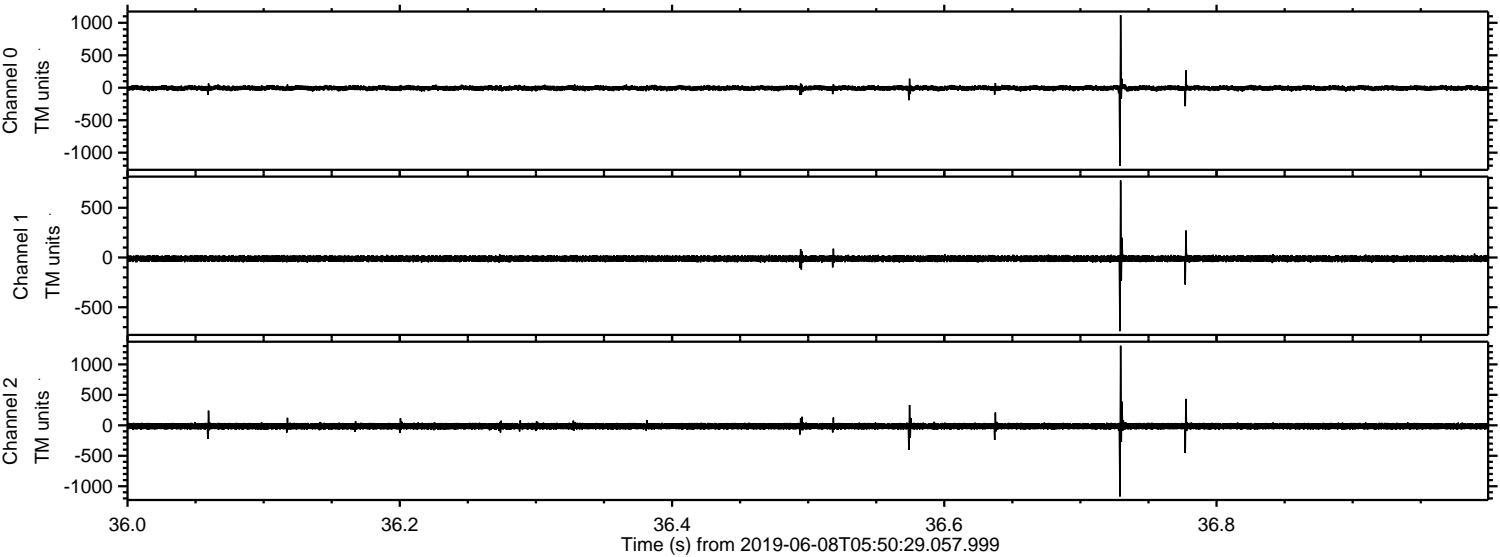


Channel 0
mn: -559
mx: 528
 μ : -5.2
 σ : 19.0

Channel 1
mn: -207
mx: 209
 μ : -11.4
 σ : 15.3

Channel 2
mn: -1318
mx: 1224
 μ : -15.0
 σ : 31.8

Processed Sat Jun 8 07:58:07 2019 by ELM ver.2012-10-06 from 001__elm20190608_055028__dat00.bin



Processed Sat Jun 8 07:58:08 2019 by ELM ver.2012-10-06 from 001__elm20190608_055028__dat00.bin

