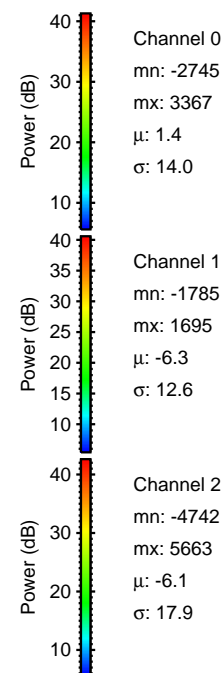
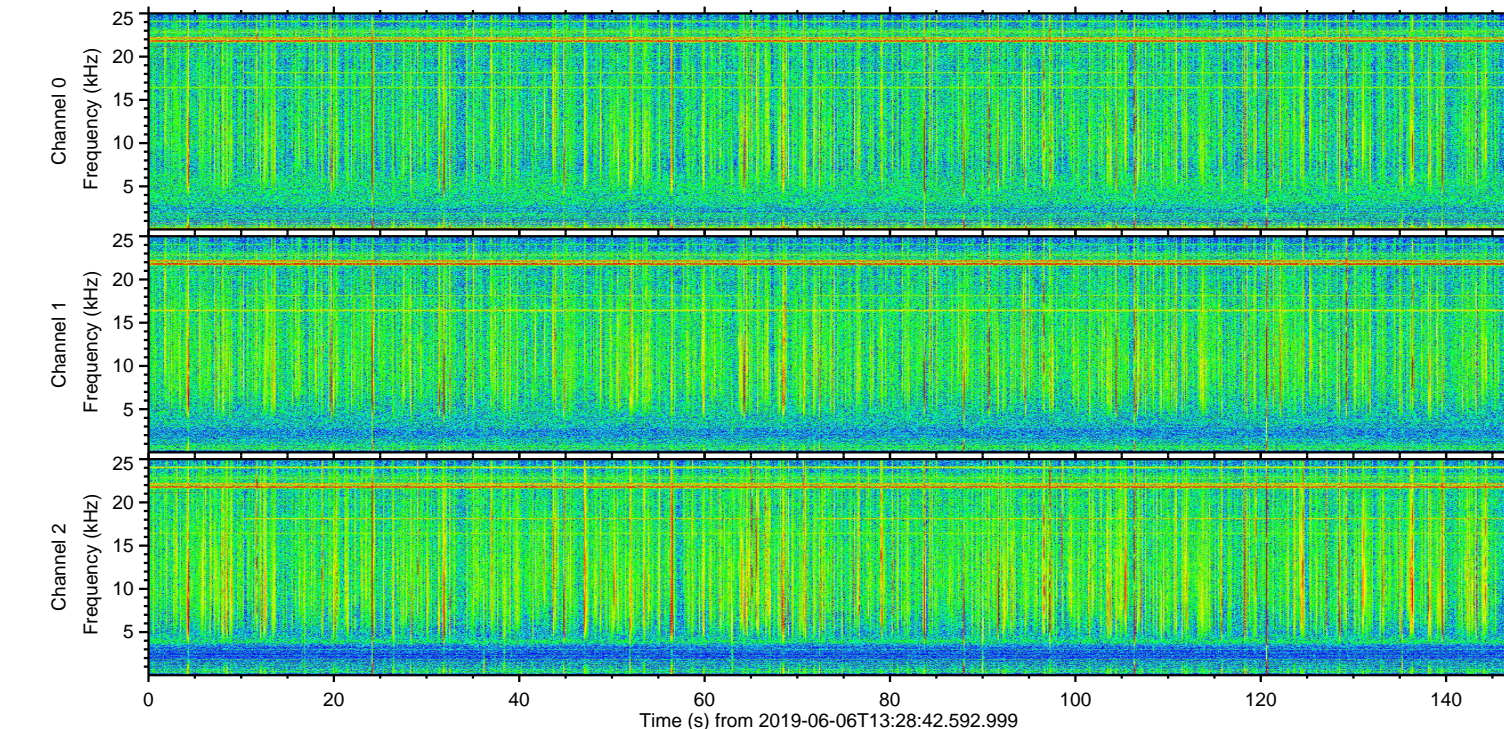
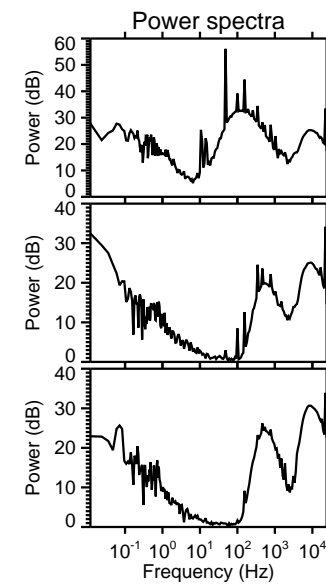
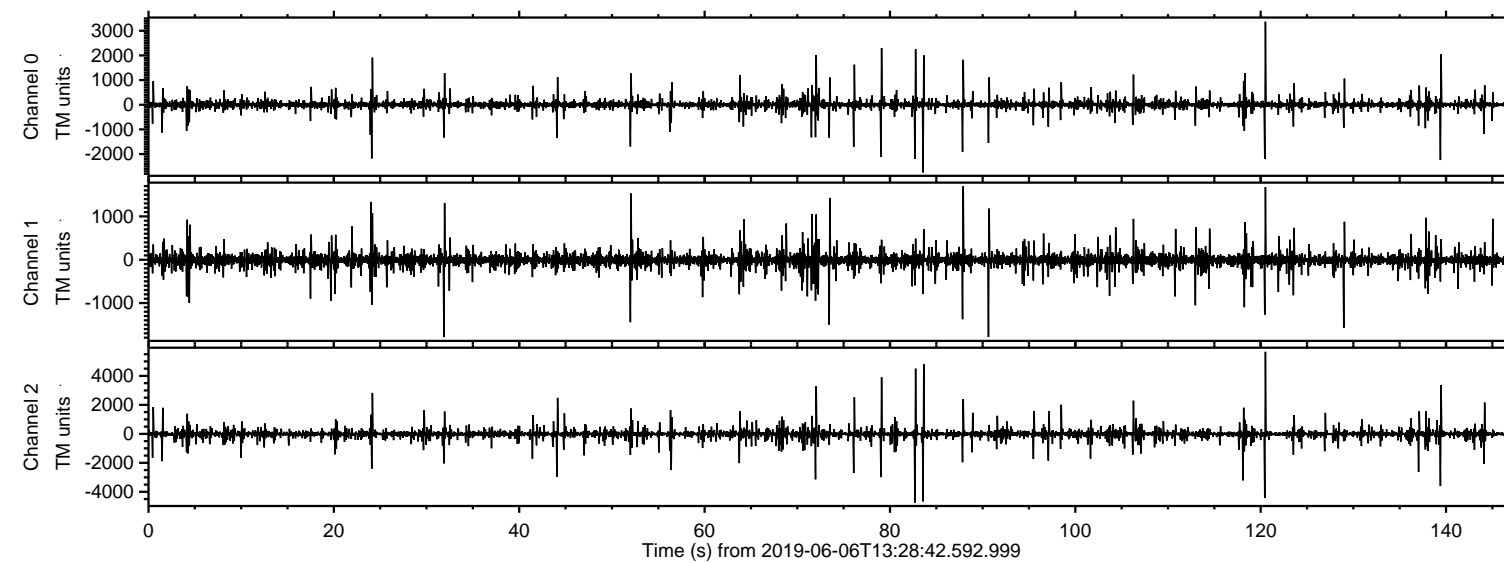


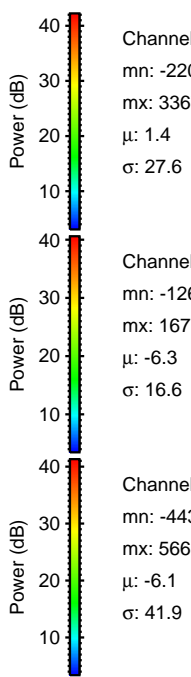
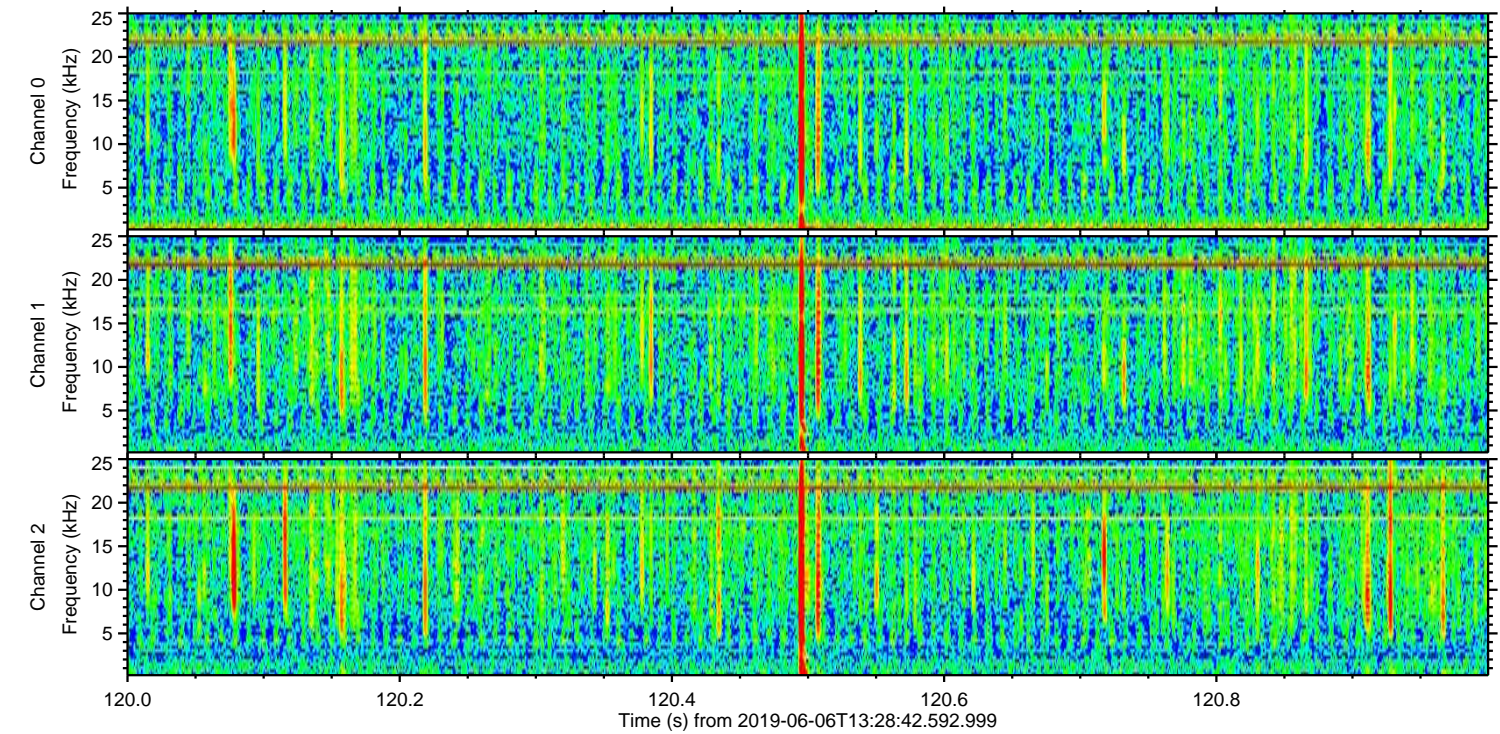
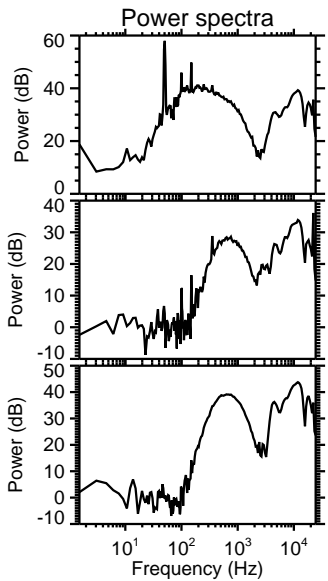
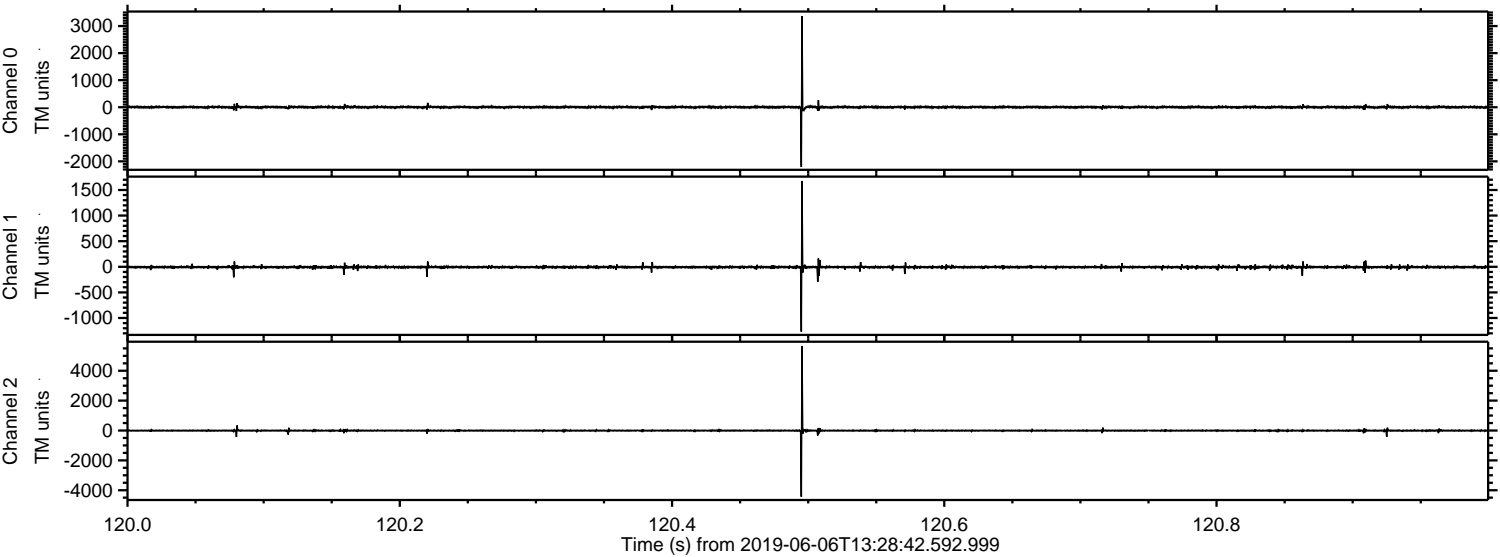
ELMAVAN 3D WAVEFORMS (Measured data sampled at 50 kHz) 51000 packets of 144 samples from 2019-06-06T13:28:42.592.999.

Processed Thu Jun 6 15:35:57 2019 by ELM ver.2012-10-06 from 001__elm20190606_132841__dat00.bin



ELMAVAN 3D WAVEFORMS (Measured data sampled at 50 kHz) 51000 packets of 144 samples from 2019-06-06T13:28:42.592.999. Part 121/147

Processed Thu Jun 6 15:36:06 2019 by ELM ver.2012-10-06 from 001__elm20190606_132841__dat00.bin

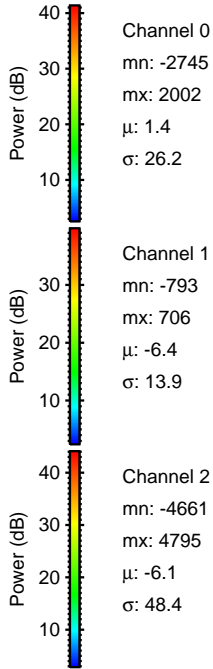
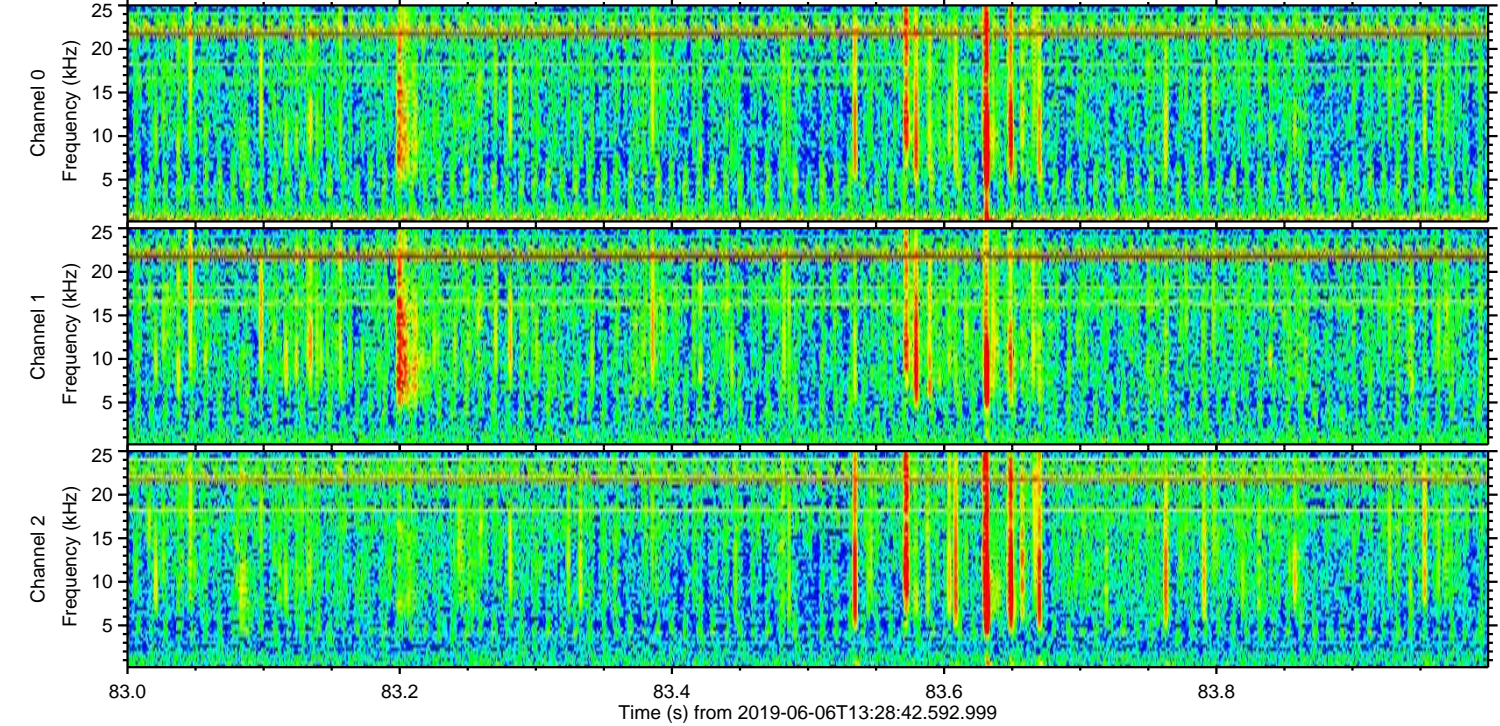
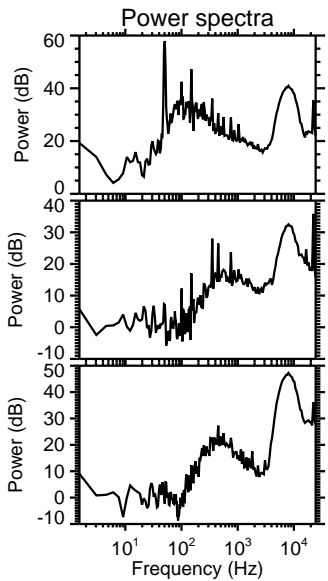
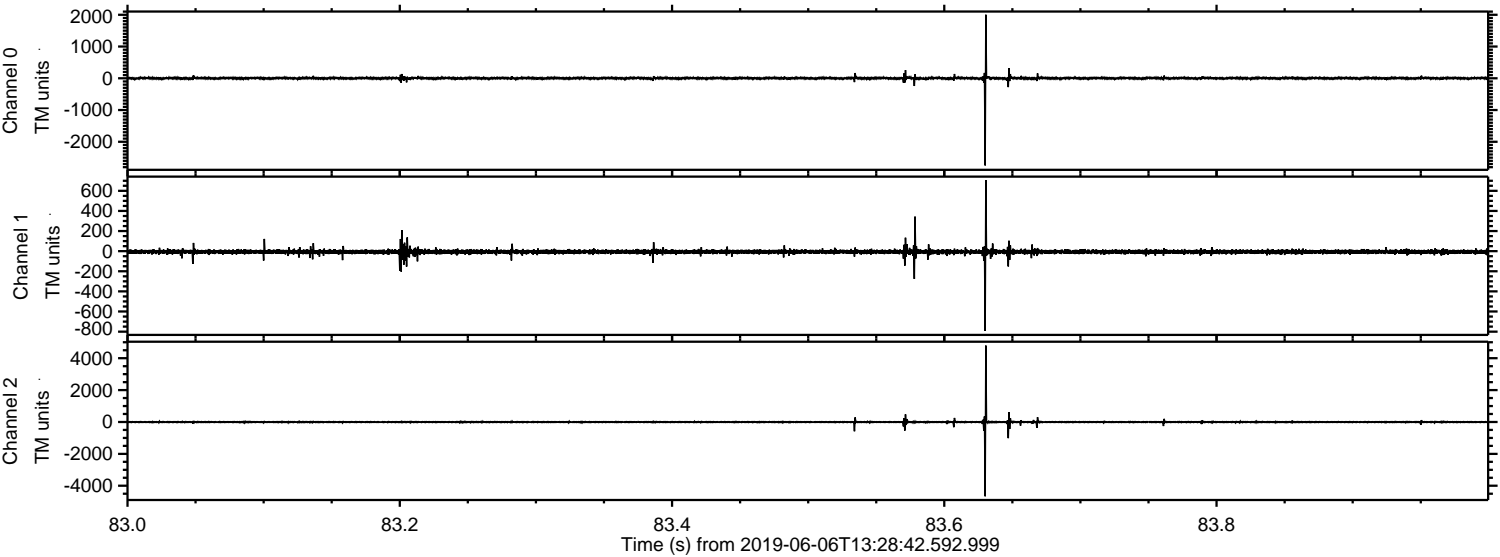


Channel 0
mn: -2203
mx: 3367
 μ : 1.4
 σ : 27.6

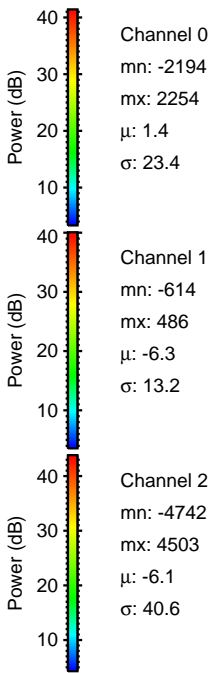
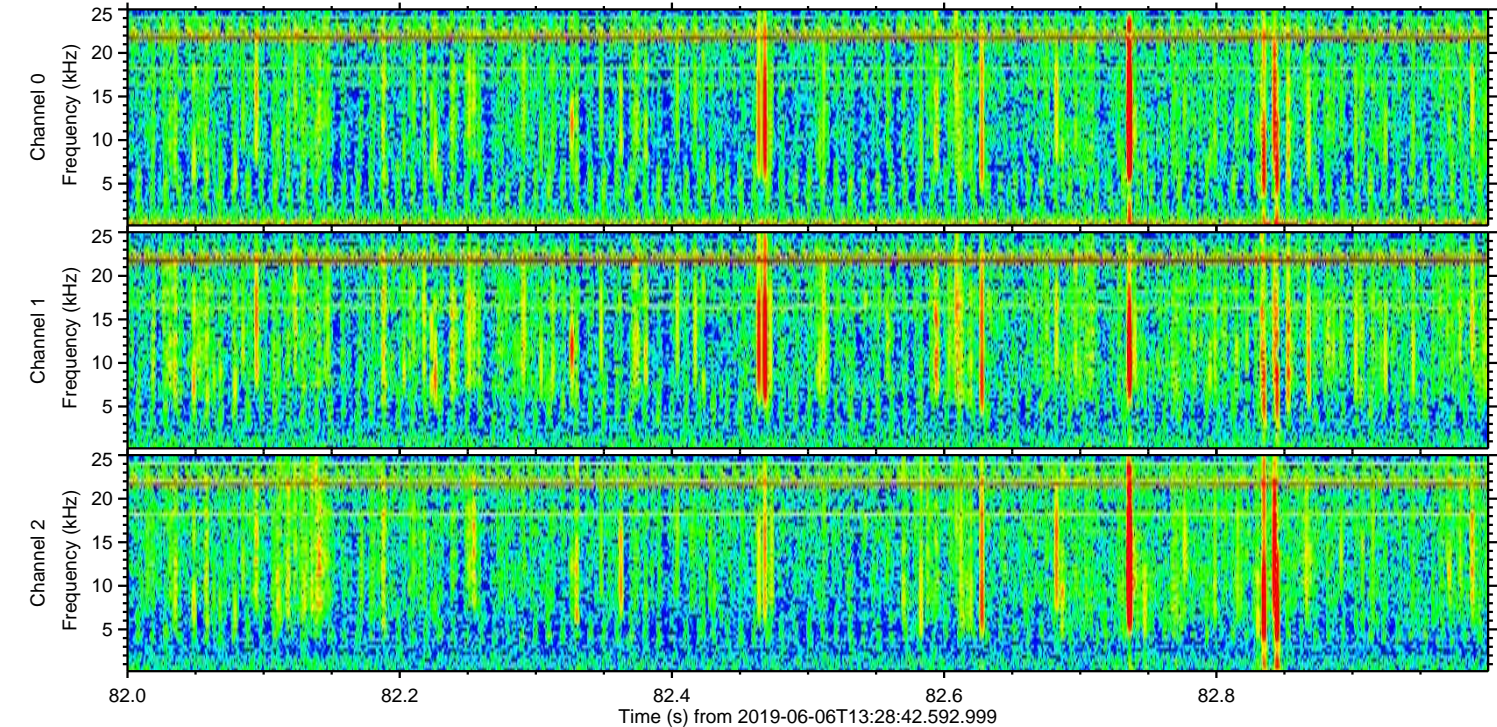
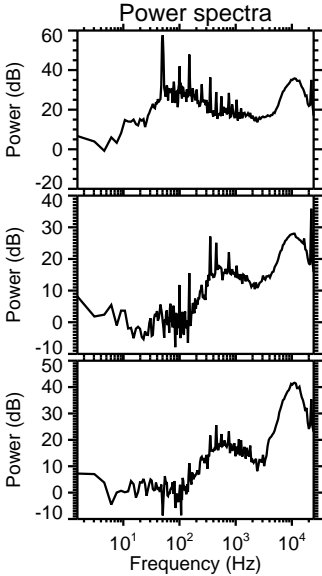
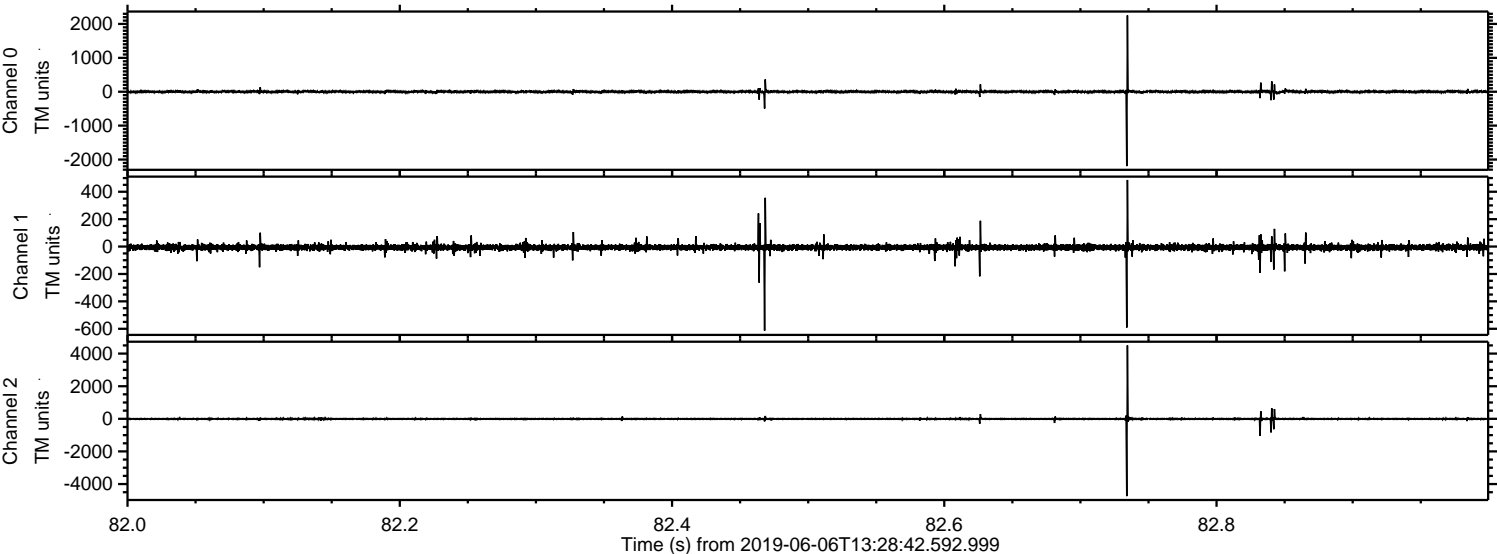
Channel 1
mn: -1267
mx: 1677
 μ : -6.3
 σ : 16.6

Channel 2
mn: -4433
mx: 5663
 μ : -6.1
 σ : 41.9

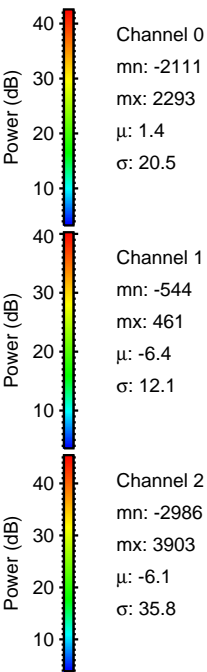
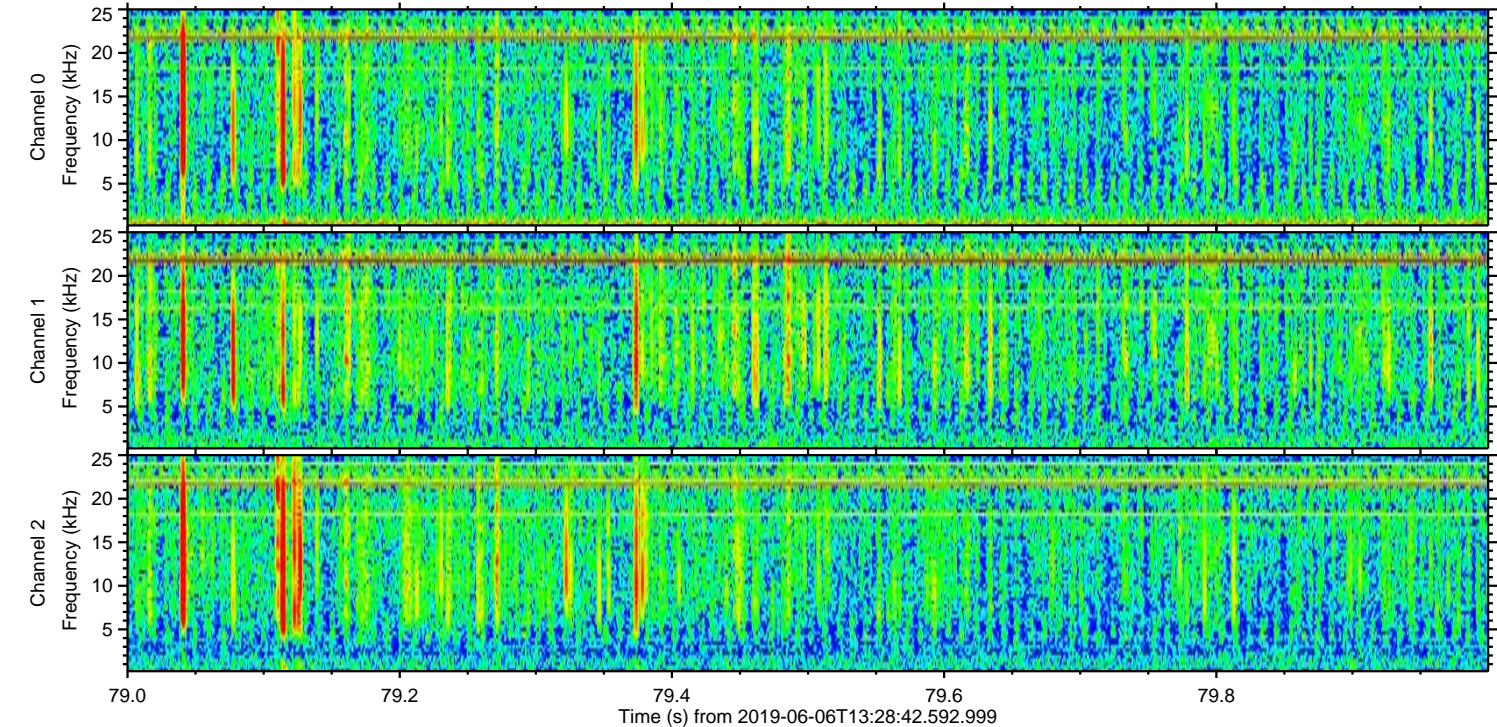
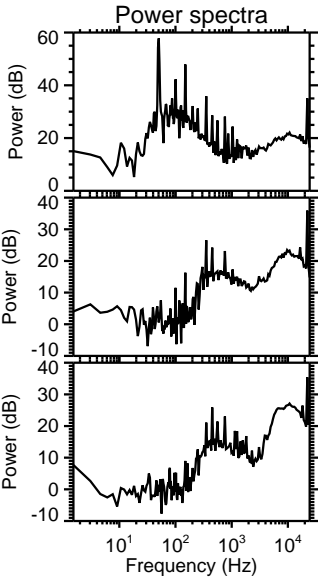
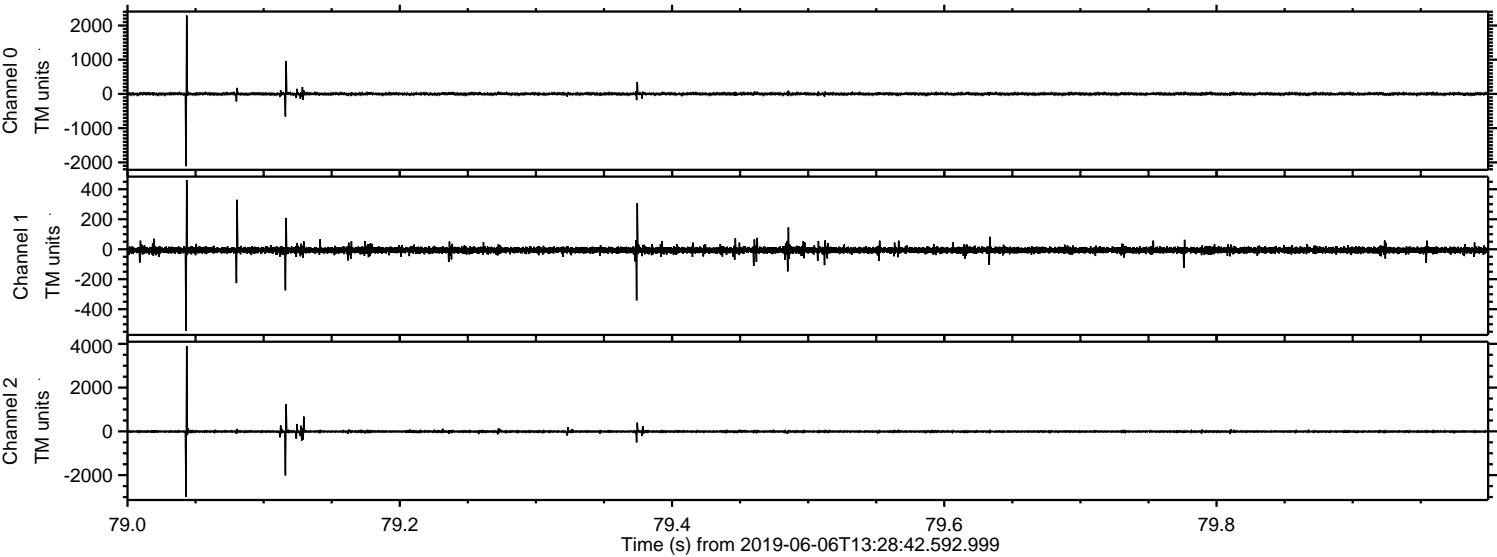
Processed Thu Jun 6 15:36:07 2019 by ELM ver.2012-10-06 from 001__elm20190606_132841__dat00.bin



Processed Thu Jun 6 15:36:07 2019 by ELM ver.2012-10-06 from 001__elm20190606_132841__dat00.bin

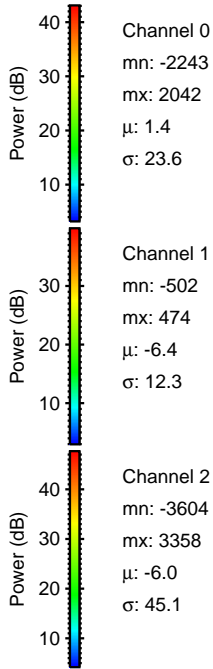
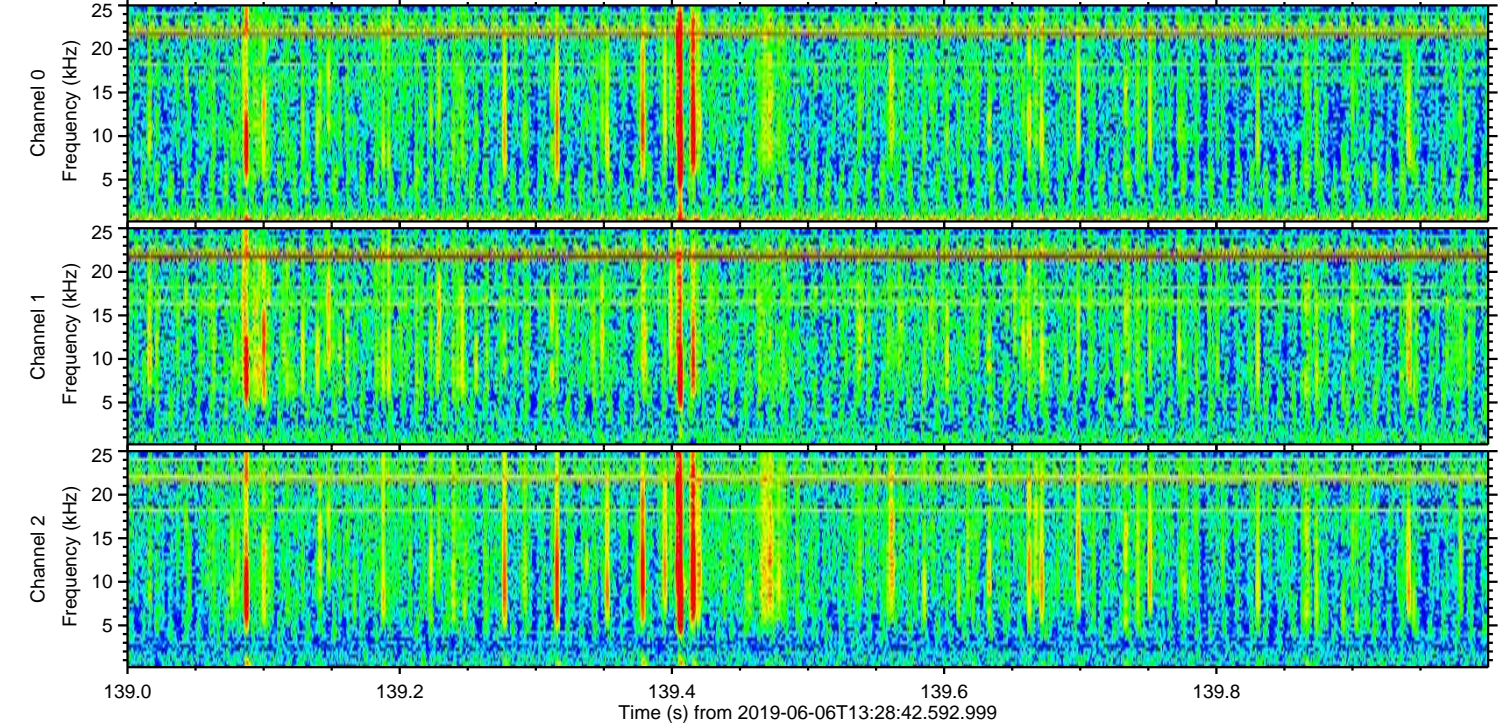
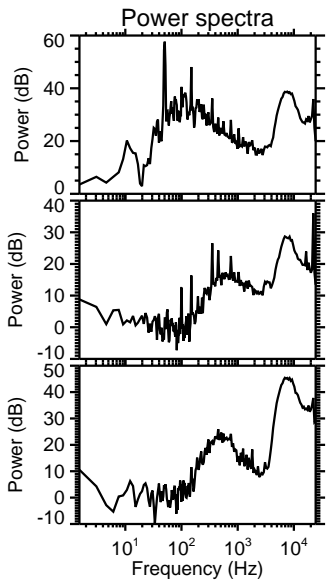
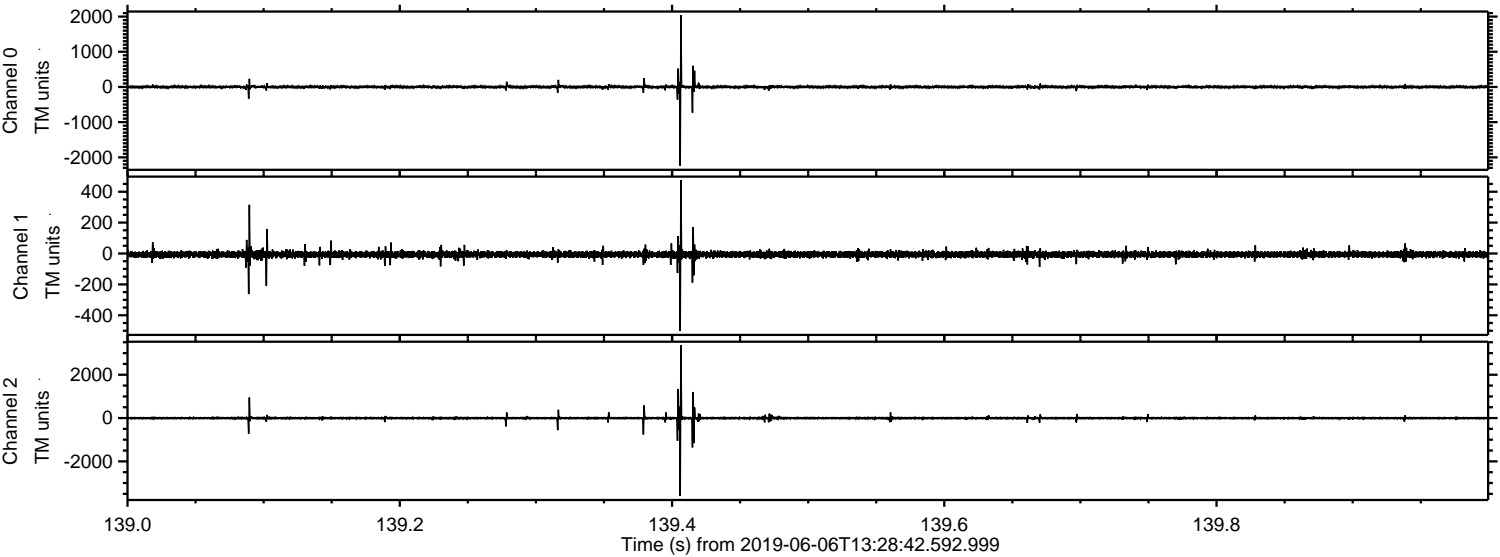


Processed Thu Jun 6 15:36:08 2019 by ELM ver.2012-10-06 from 001__elm20190606_132841__dat00.bin

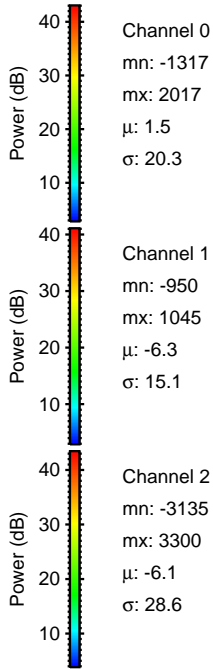
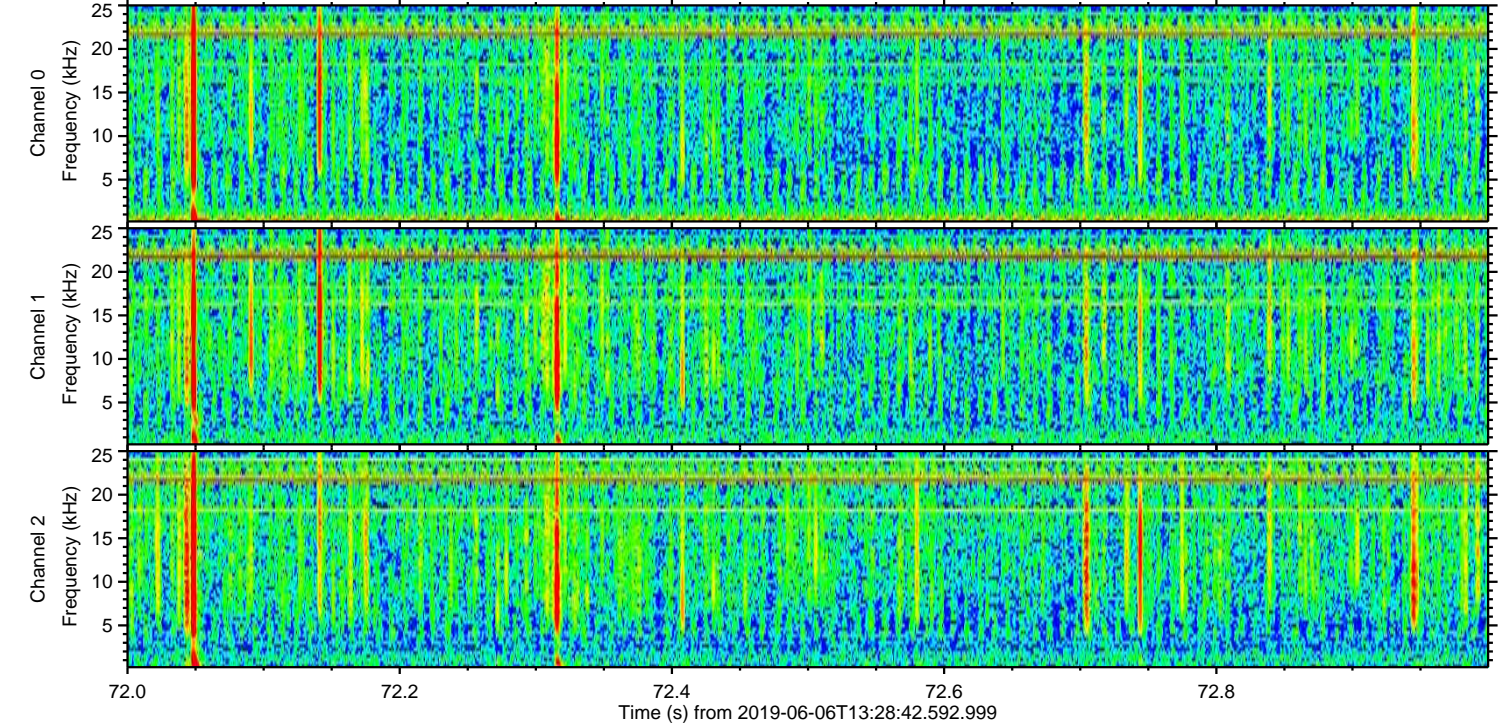
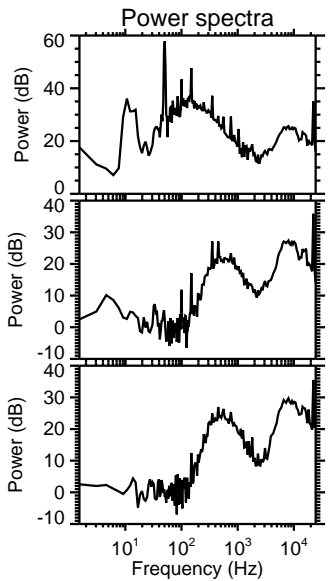
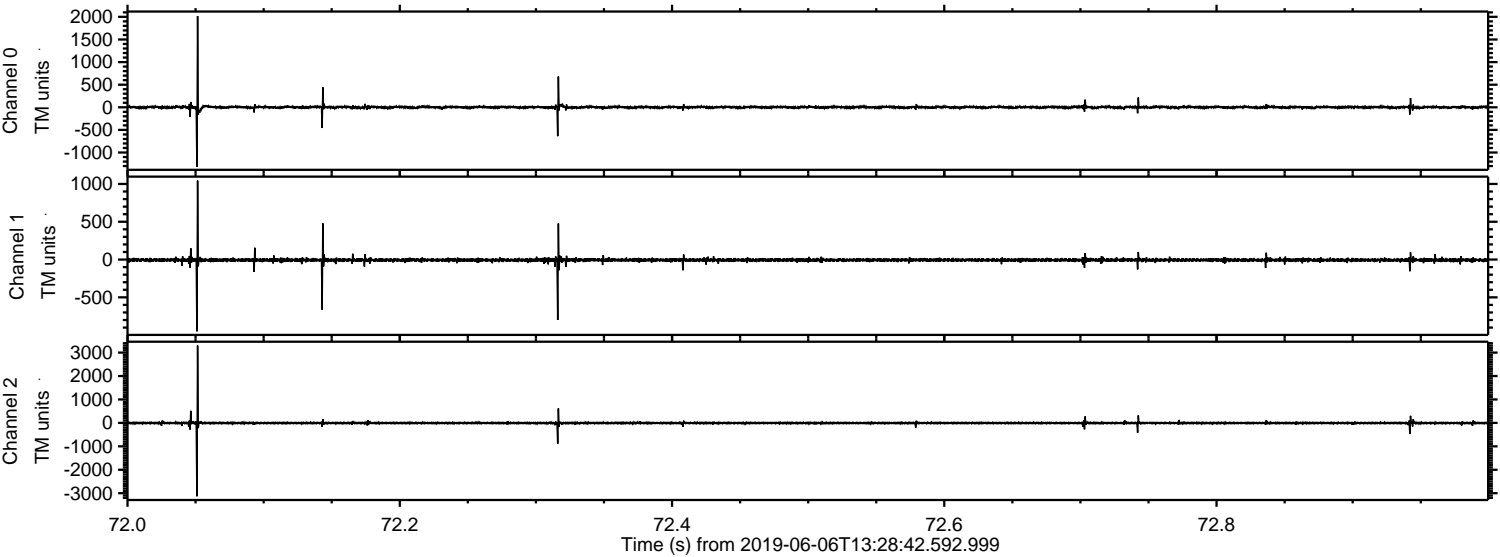


ELMAVAN 3D WAVEFORMS (Measured data sampled at 50 kHz) 51000 packets of 144 samples from 2019-06-06T13:28:42.592.999. Part 140/147

Processed Thu Jun 6 15:36:09 2019 by ELM ver.2012-10-06 from 001__elm20190606_132841__dat00.bin

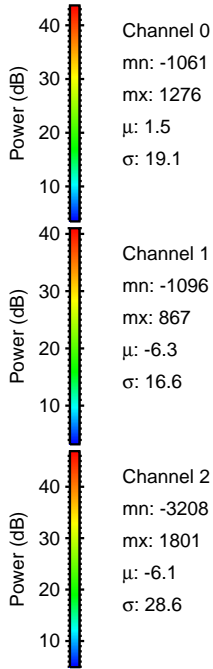
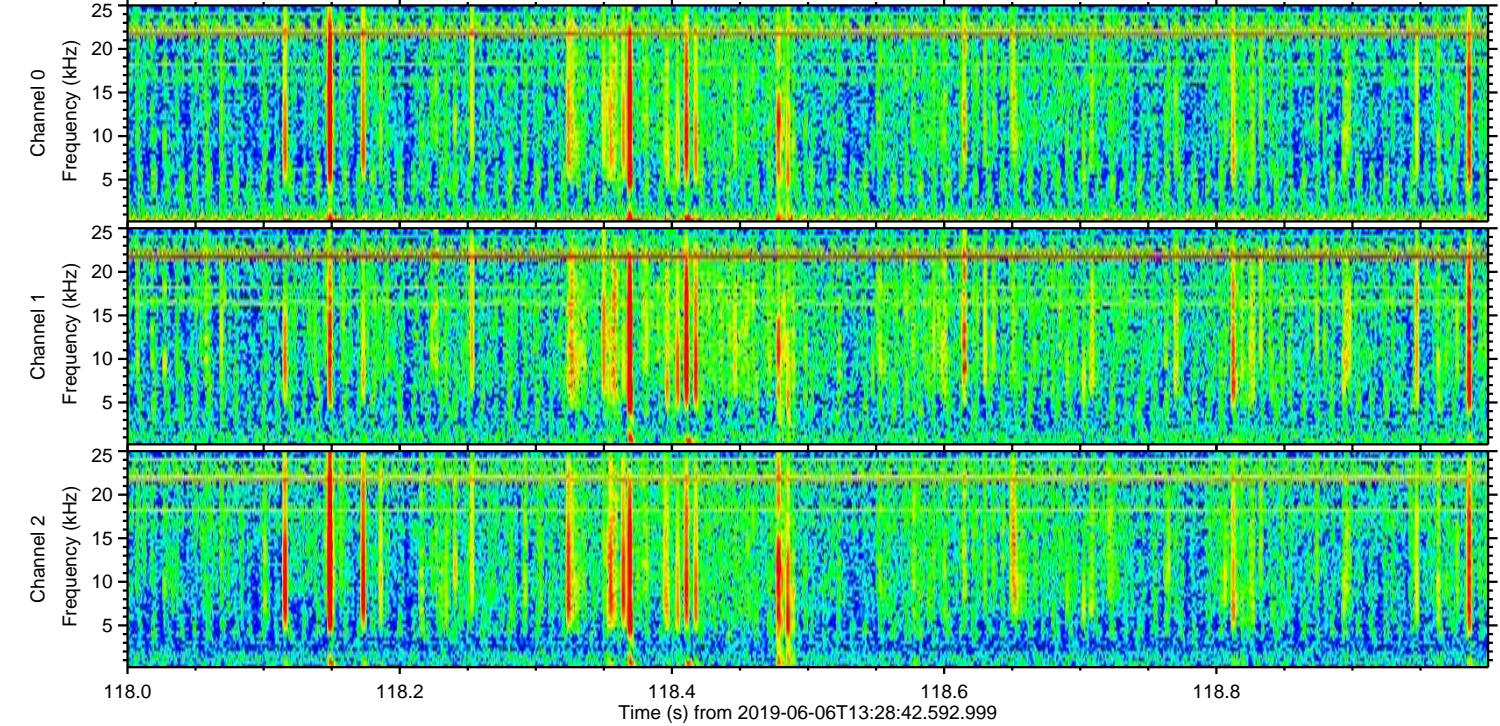
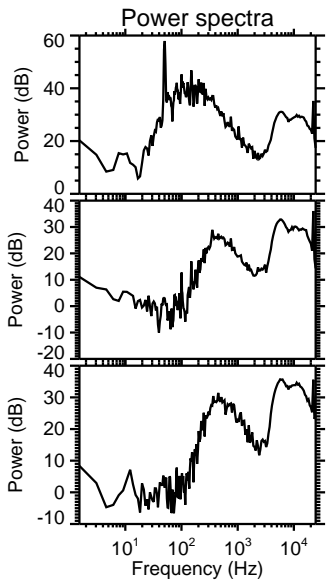
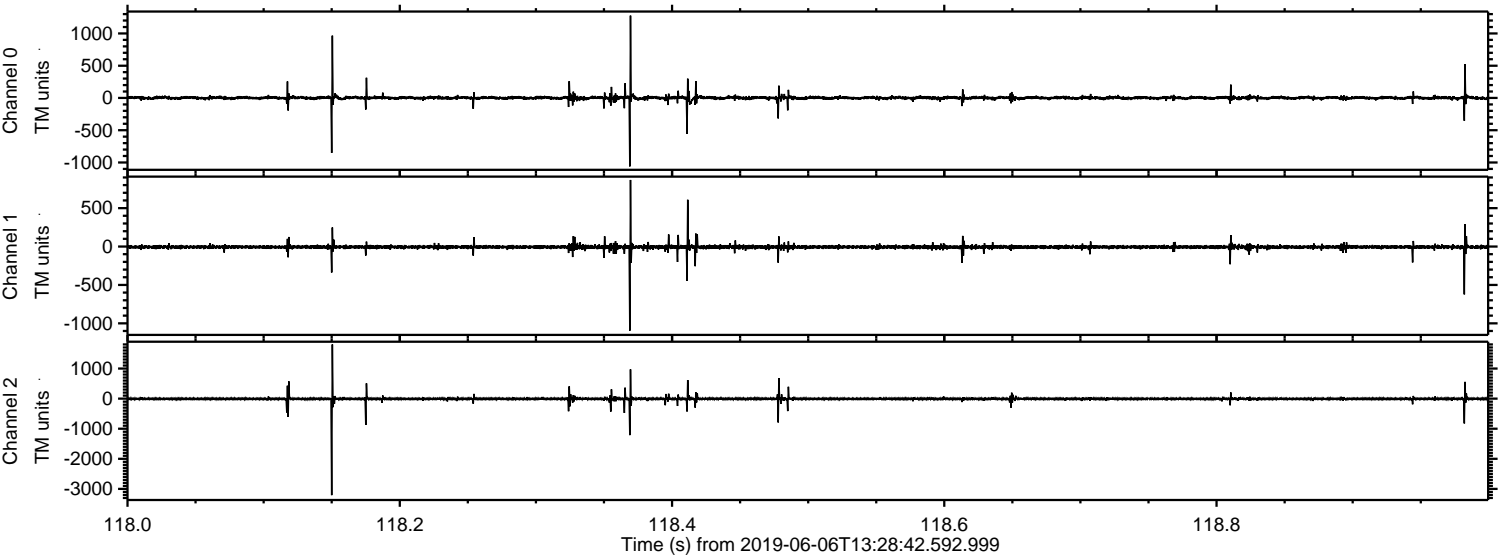


Processed Thu Jun 6 15:36:10 2019 by ELM ver.2012-10-06 from 001__elm20190606_132841__dat00.bin



ELMAVAN 3D WAVEFORMS (Measured data sampled at 50 kHz) 51000 packets of 144 samples from 2019-06-06T13:28:42.592.999. Part 119/147

Processed Thu Jun 6 15:36:11 2019 by ELM ver.2012-10-06 from 001__elm20190606_132841__dat00.bin

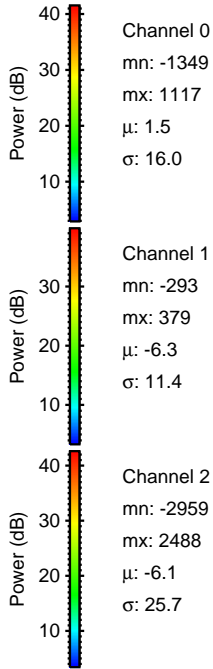
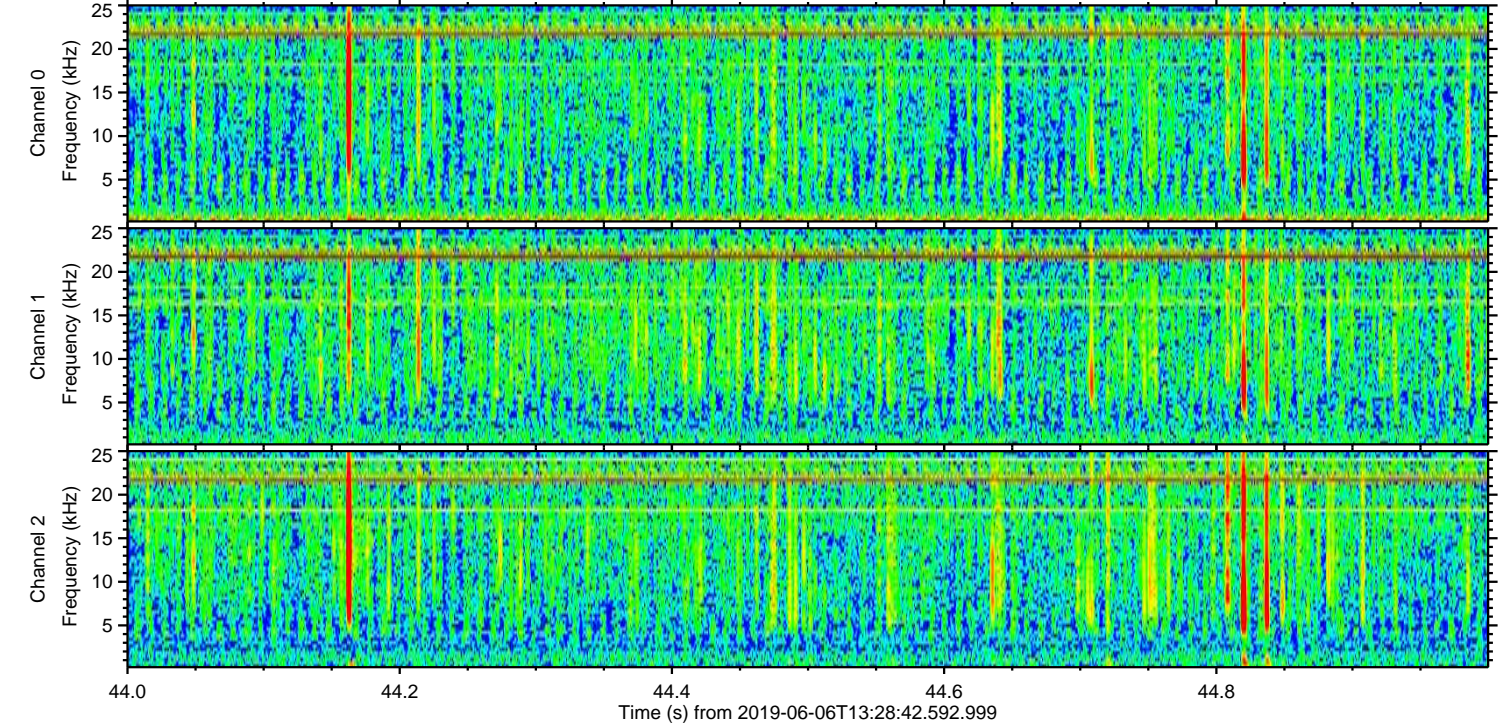
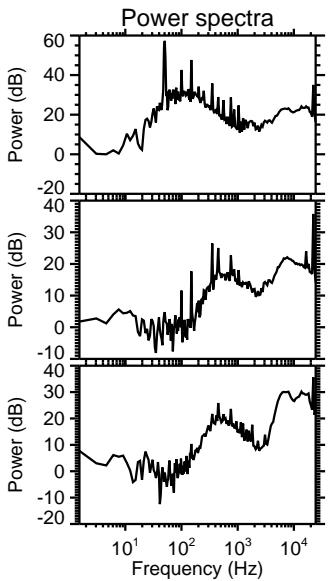
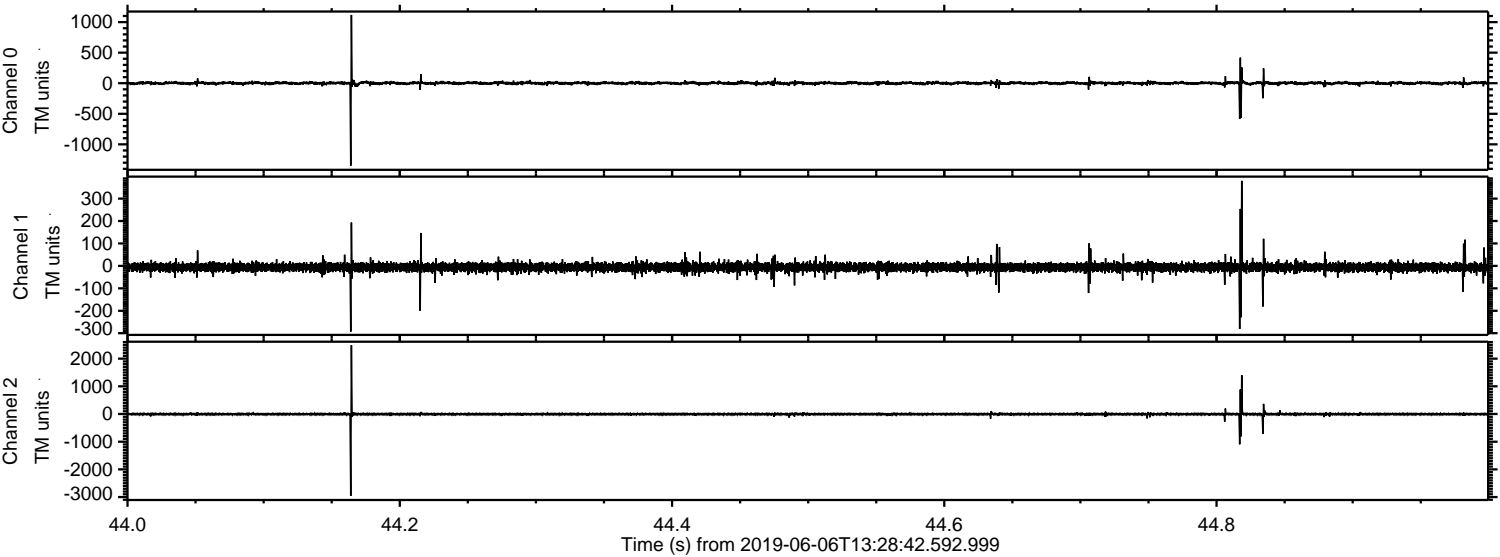


Channel 0
mn: -1061
mx: 1276
 μ : 1.5
 σ : 19.1

Channel 1
mn: -1096
mx: 867
 μ : -6.3
 σ : 16.6

Channel 2
mn: -3208
mx: 1801
 μ : -6.1
 σ : 28.6

Processed Thu Jun 6 15:36:11 2019 by ELM ver.2012-10-06 from 001__elm20190606_132841__dat00.bin



Processed Thu Jun 6 15:36:12 2019 by ELM ver.2012-10-06 from 001__elm20190606_132841__dat00.bin

