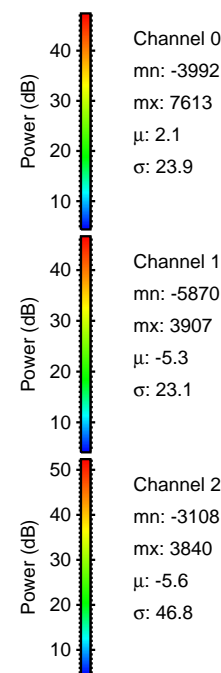
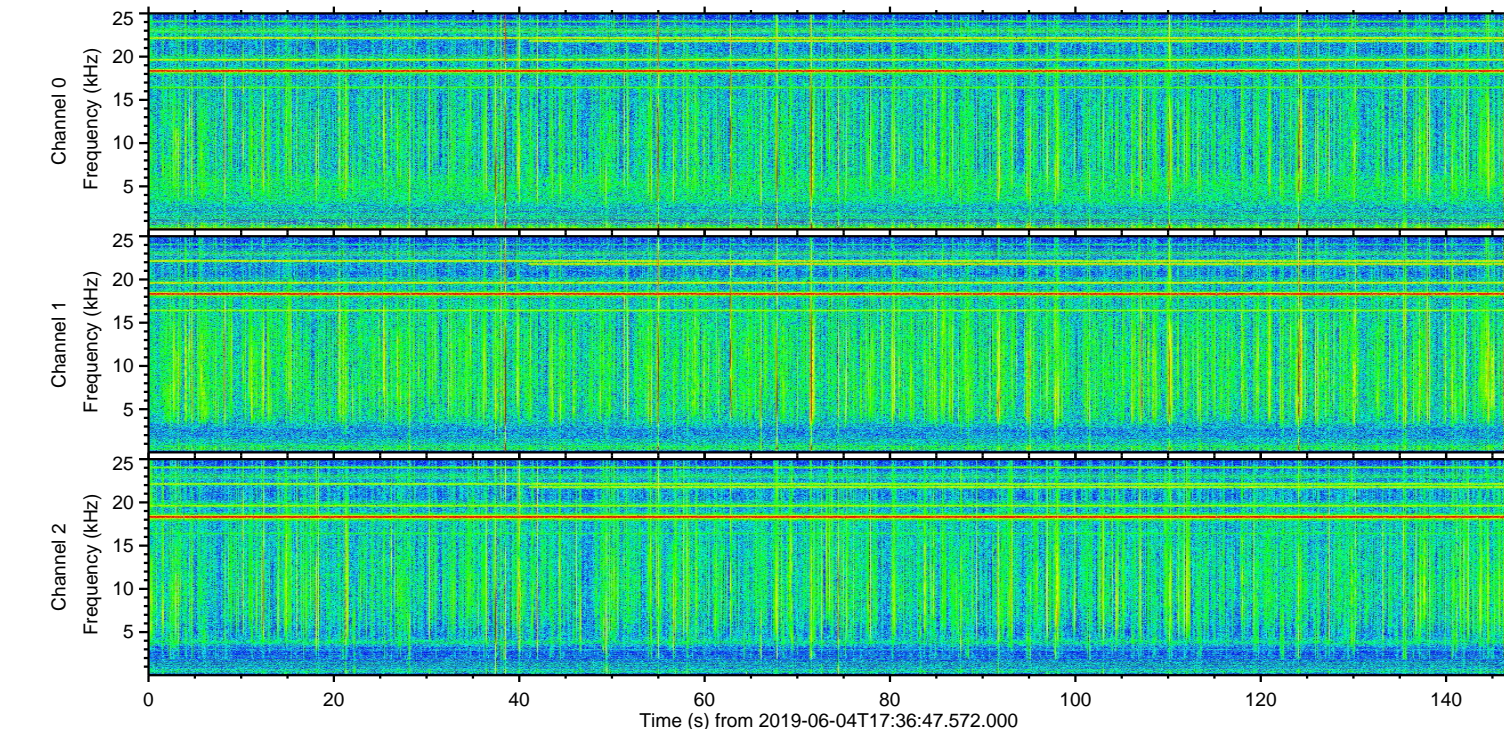
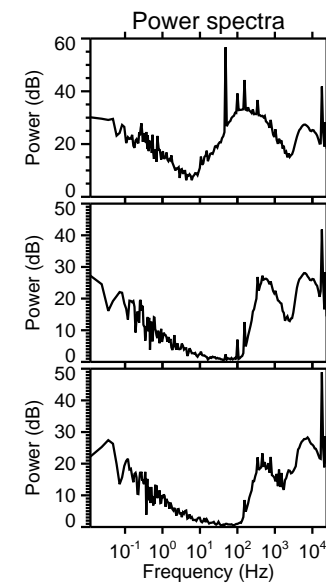
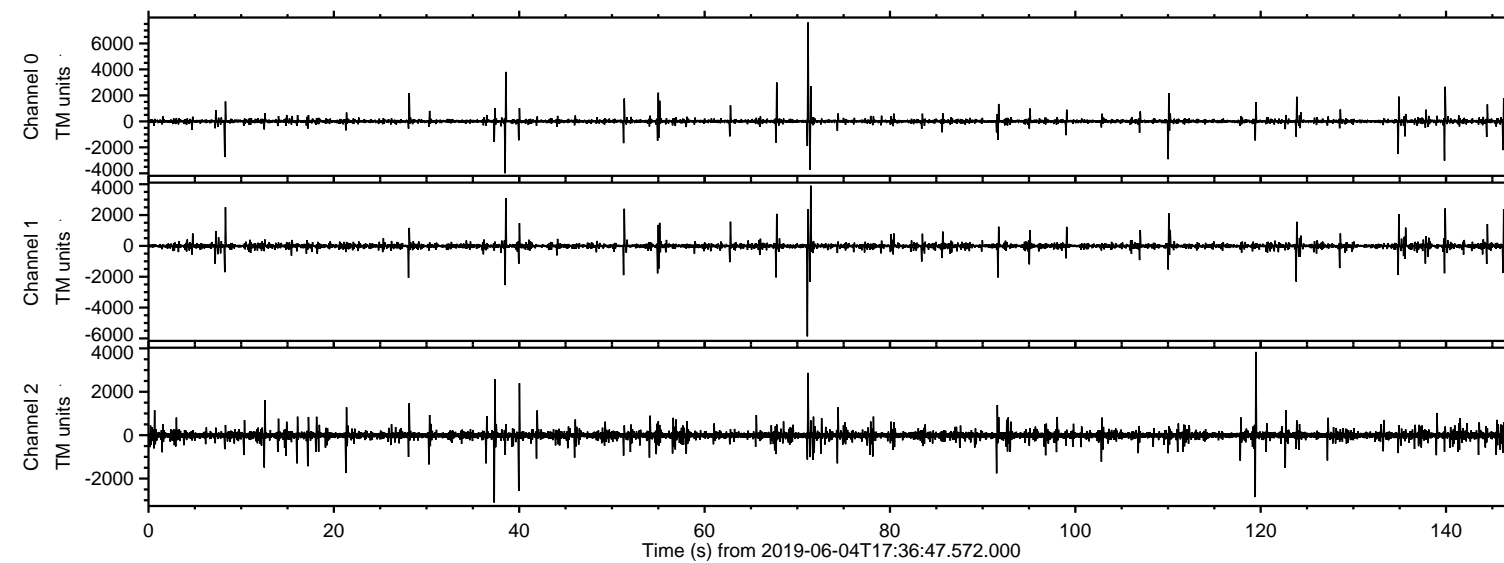
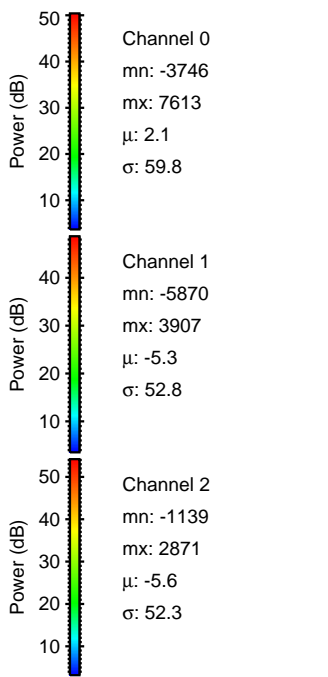
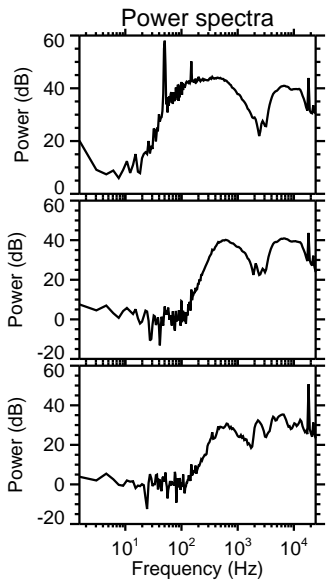
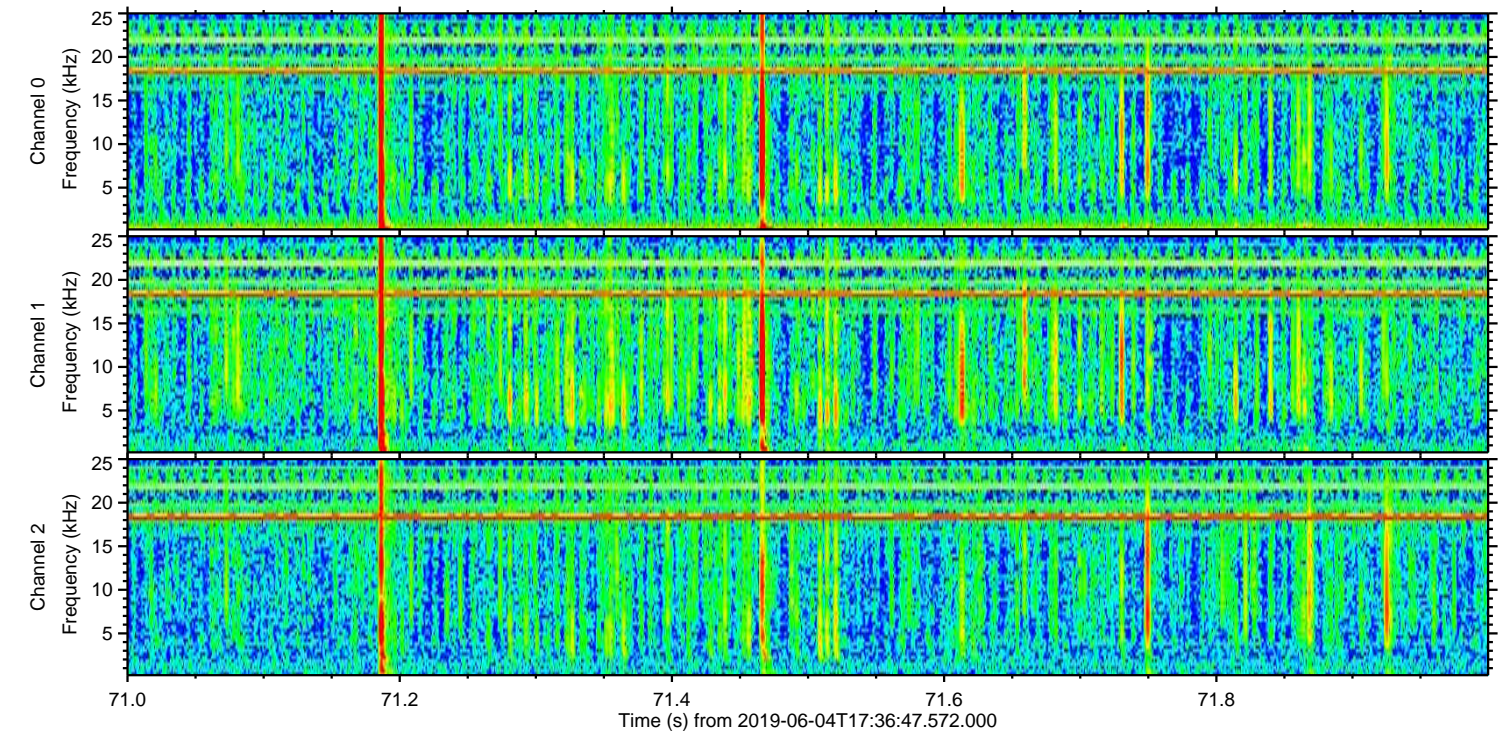
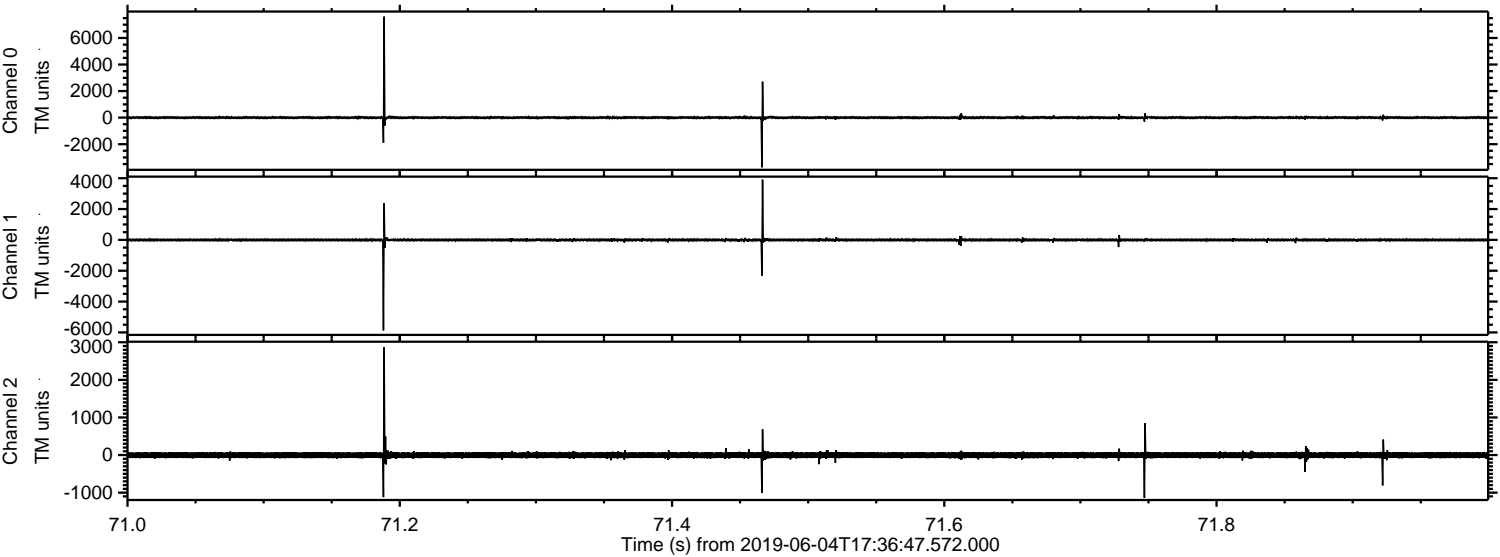


ELMAVAN 3D WAVEFORMS (Measured data sampled at 50 kHz) 51000 packets of 144 samples from 2019-06-04T17:36:47.572.000.

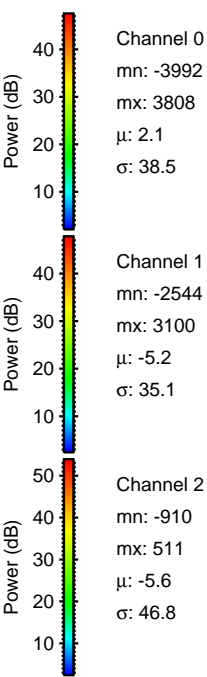
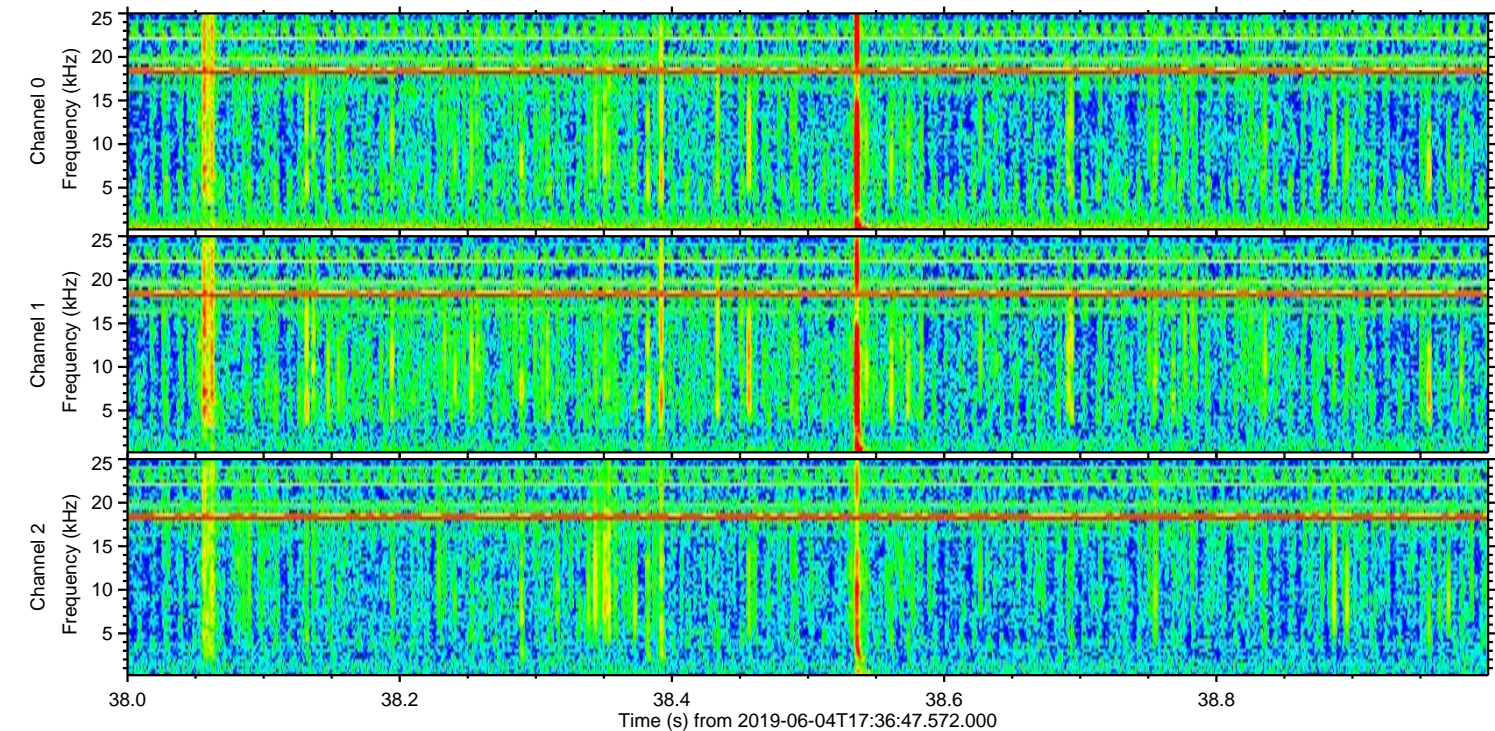
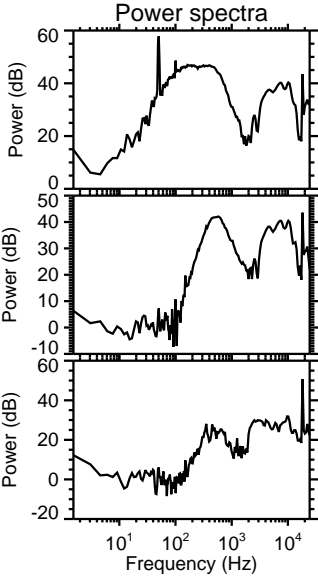
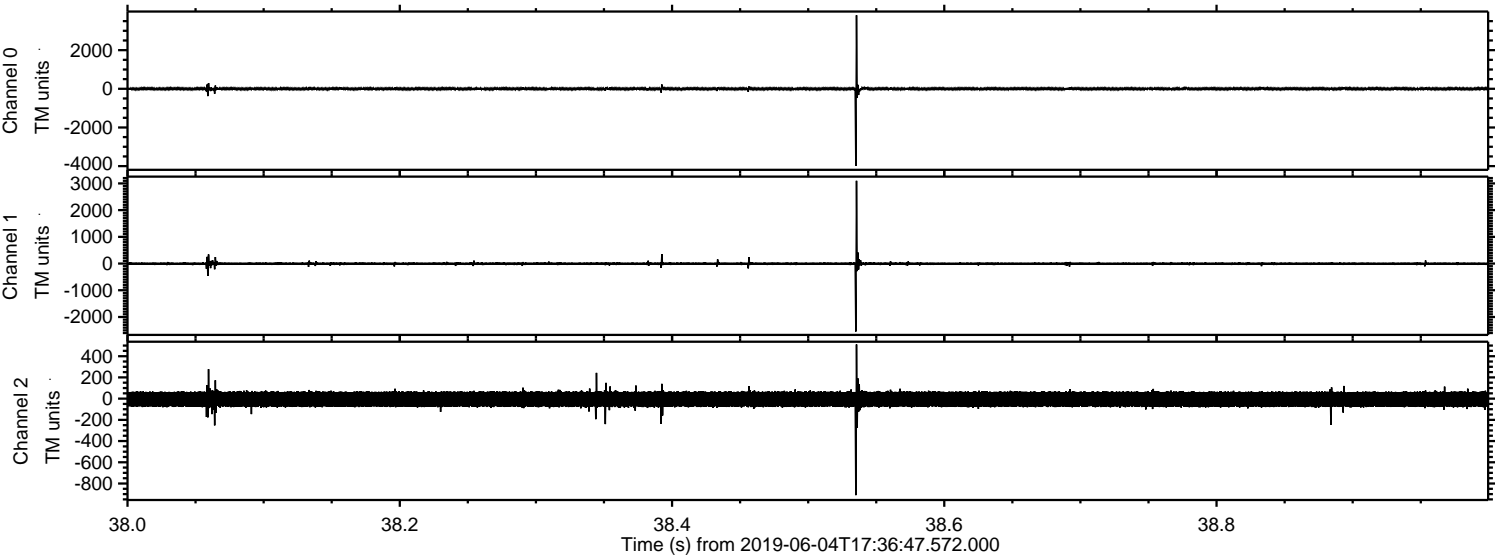
Processed Tue Jun 4 19:44:17 2019 by ELM ver.2012-10-06 from 001__elm20190604_173646__dat00.bin



Processed Tue Jun 4 19:44:23 2019 by ELM ver.2012-10-06 from 001__elm20190604_173646__dat00.bin

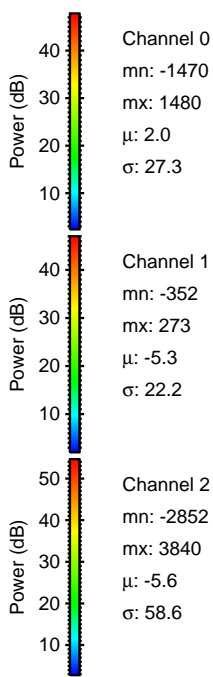
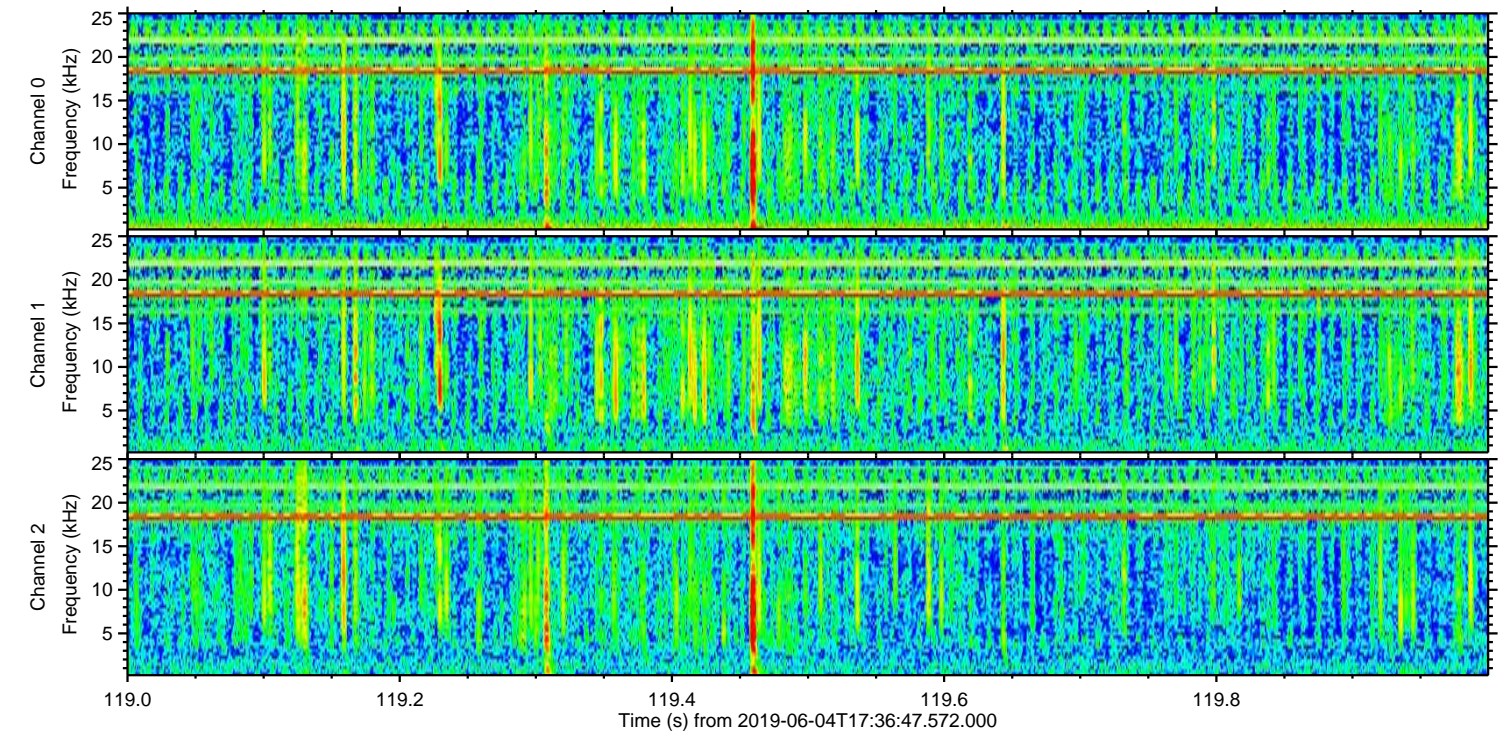
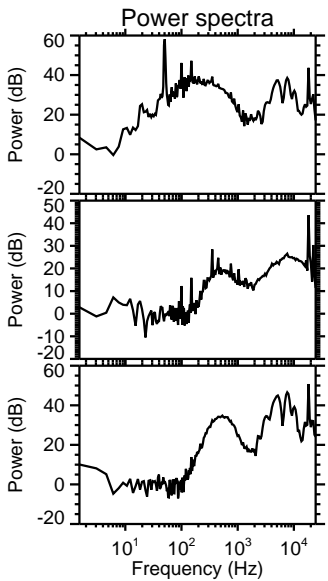
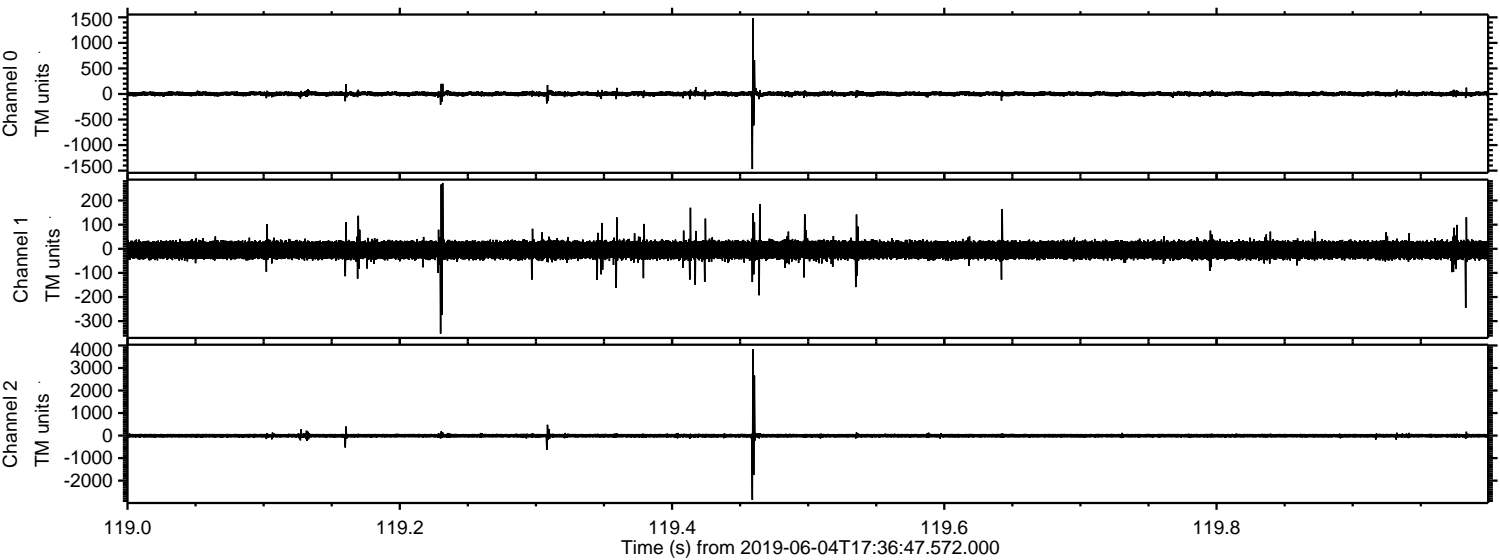


Processed Tue Jun 4 19:44:24 2019 by ELM ver.2012-10-06 from 001__elm20190604_173646__dat00.bin

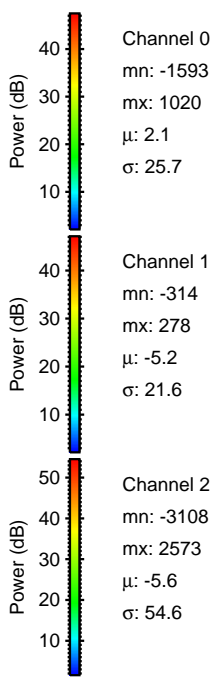
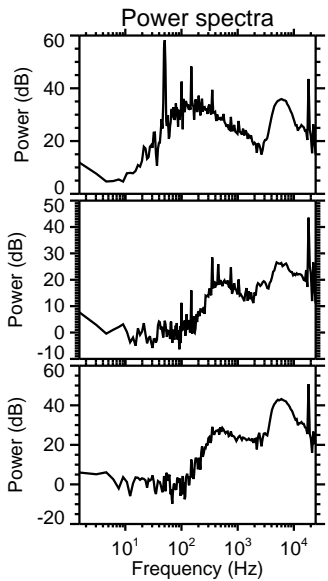
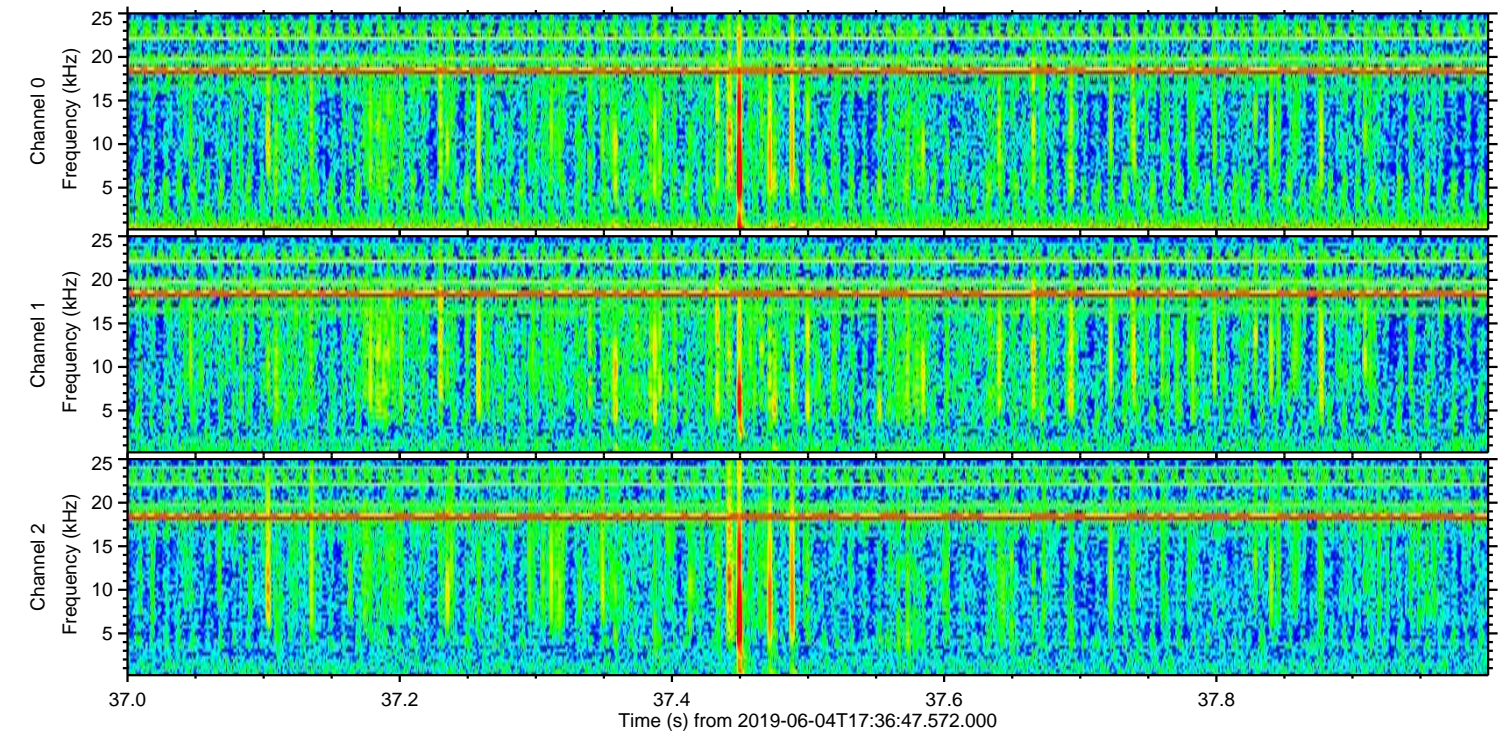
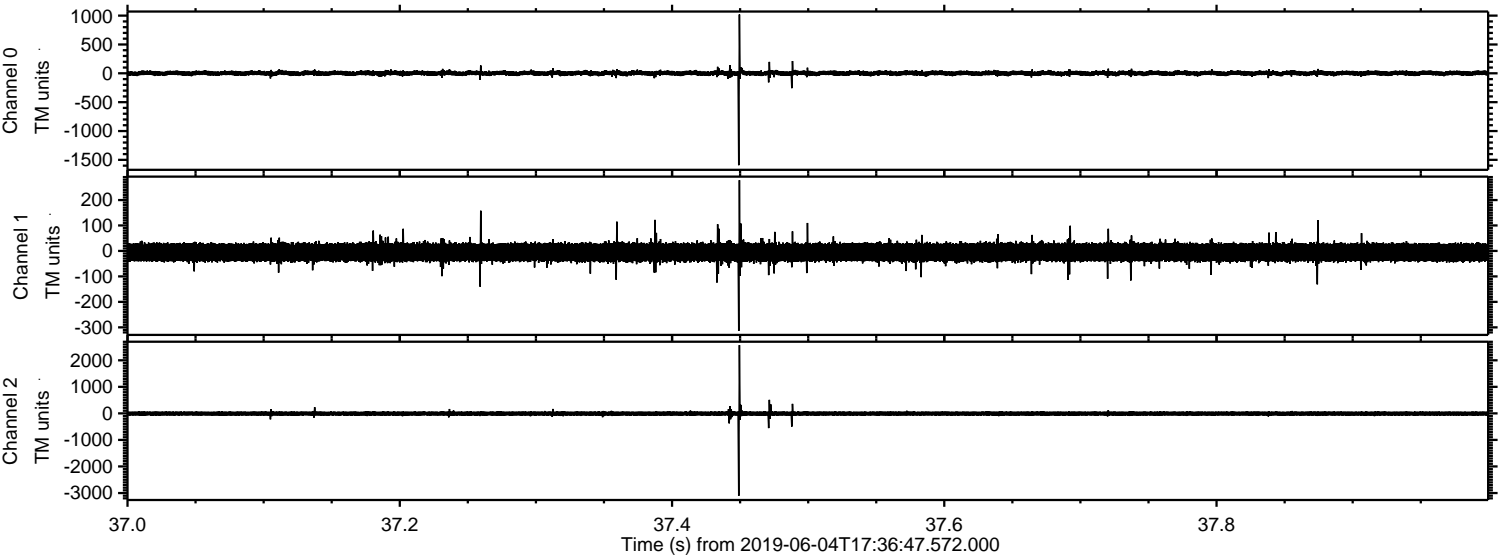


ELMAVAN 3D WAVEFORMS (Measured data sampled at 50 kHz) 51000 packets of 144 samples from 2019-06-04T17:36:47.572.000. Part 120/147

Processed Tue Jun 4 19:44:25 2019 by ELM ver.2012-10-06 from 001__elm20190604_173646__dat00.bin



Processed Tue Jun 4 19:44:25 2019 by ELM ver.2012-10-06 from 001__elm20190604_173646__dat00.bin



Channel 0

mn: -1593
mx: 1020
 μ : 2.1
 σ : 25.7

Channel 1

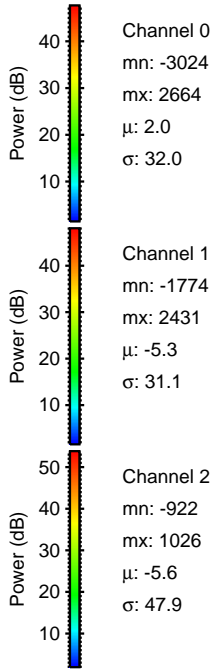
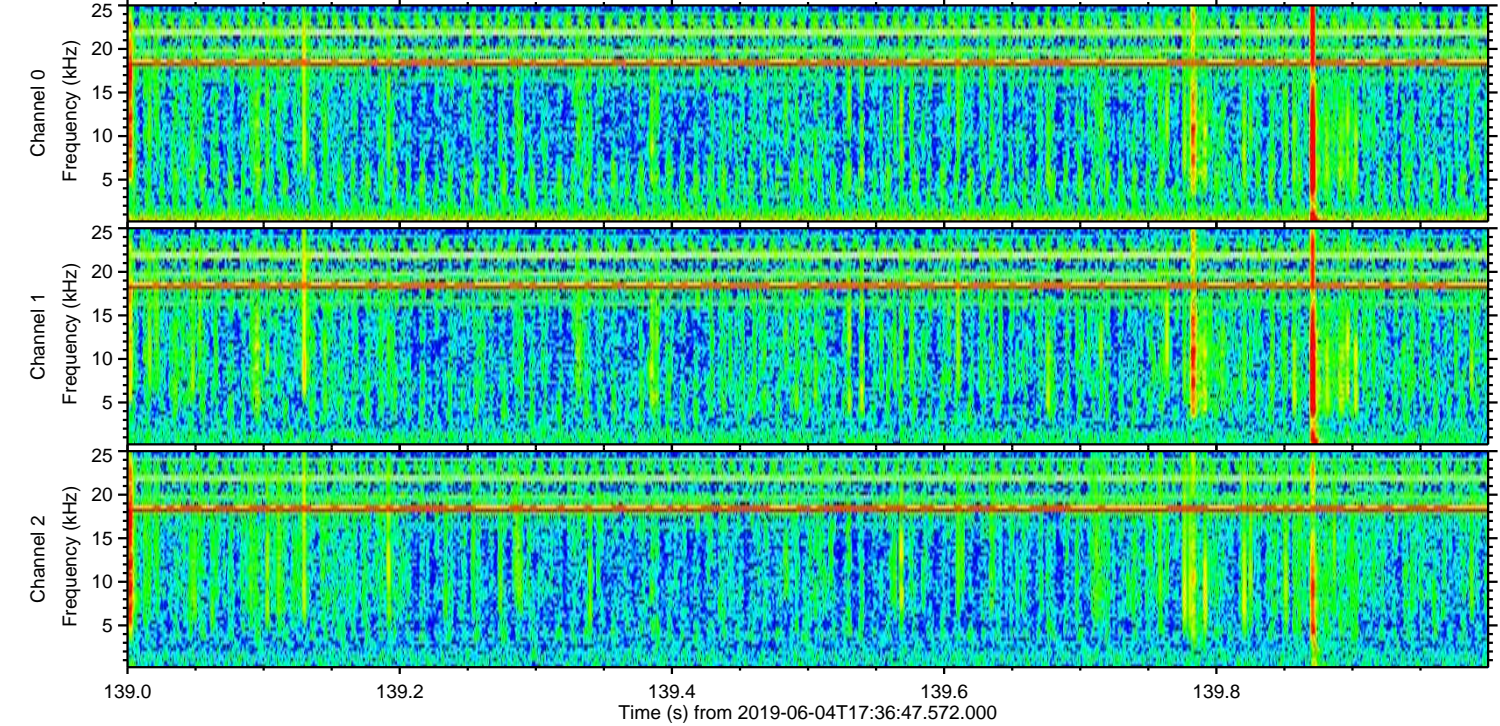
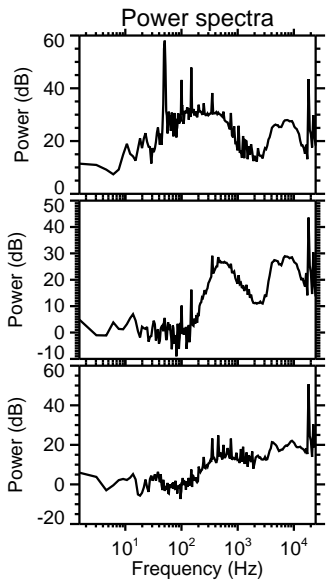
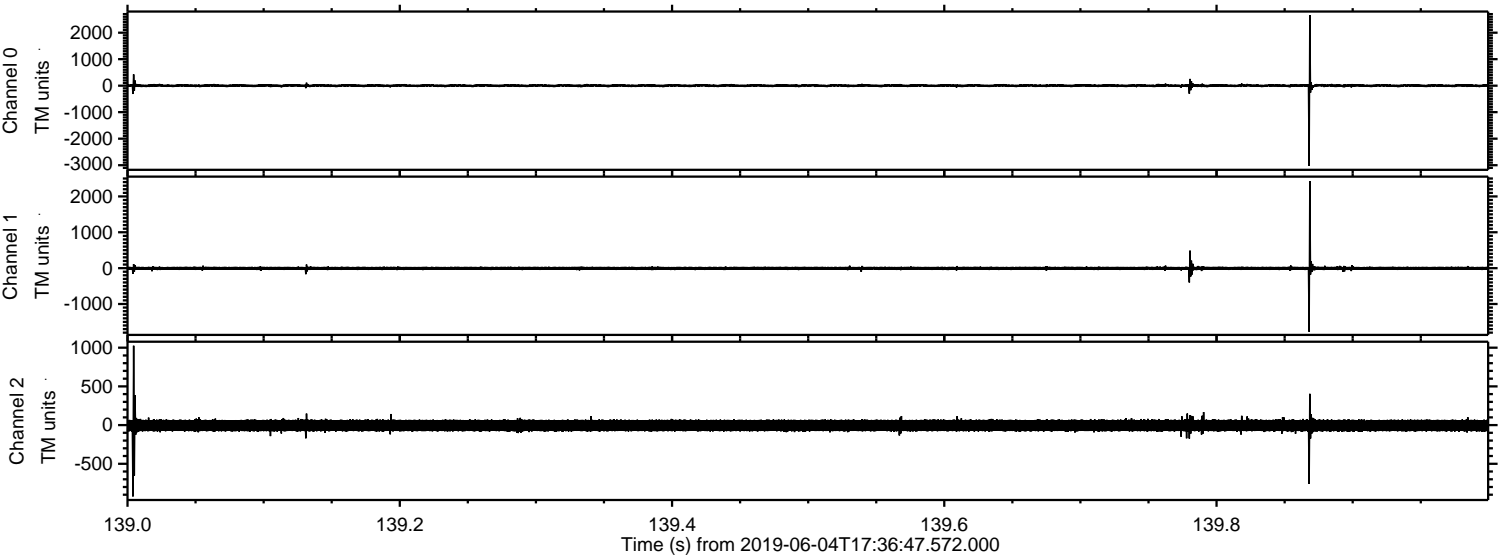
mn: -314
mx: 278
 μ : -5.2
 σ : 21.6

Channel 2

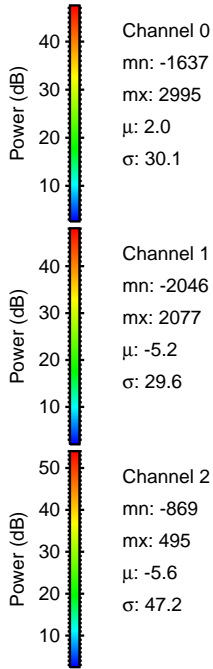
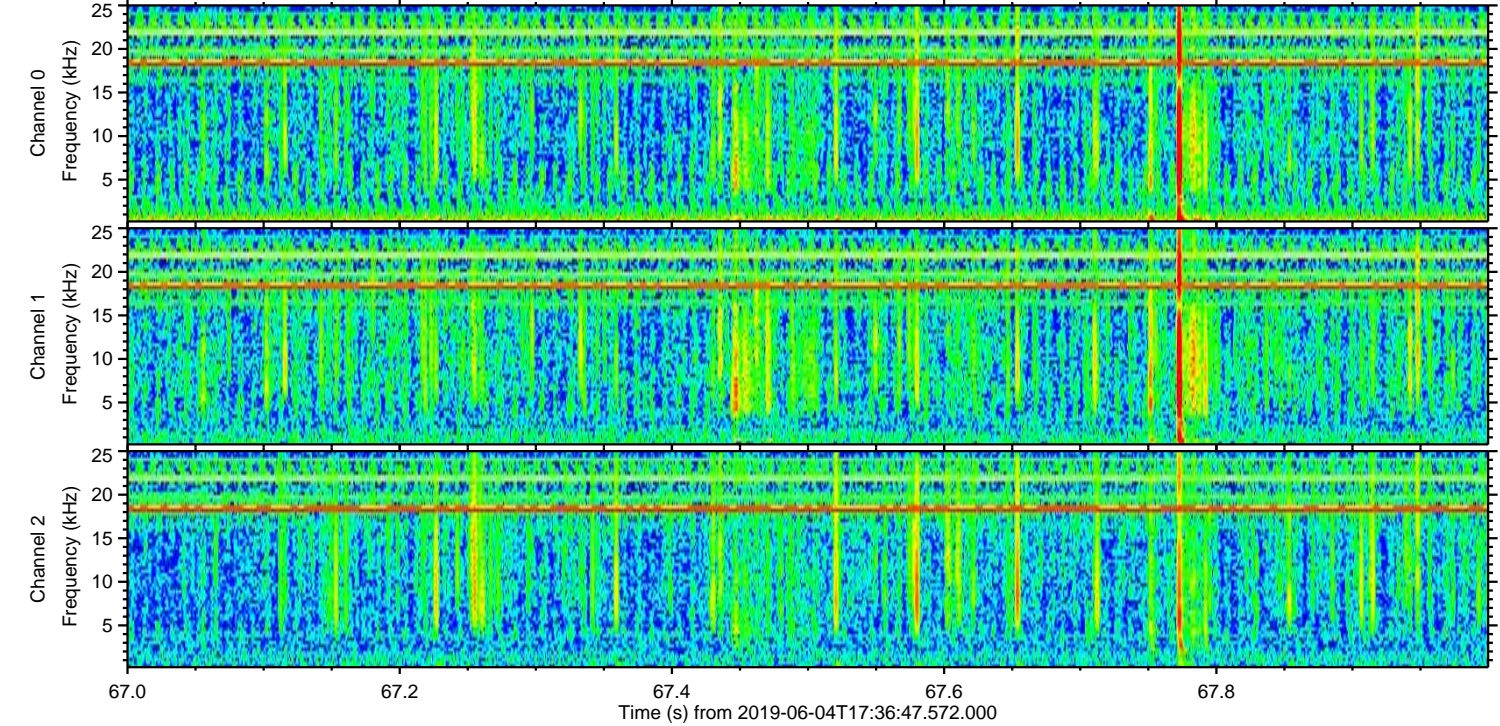
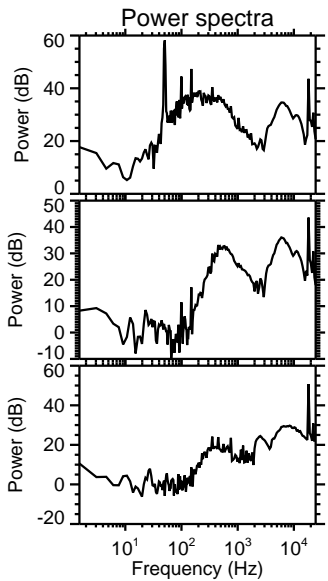
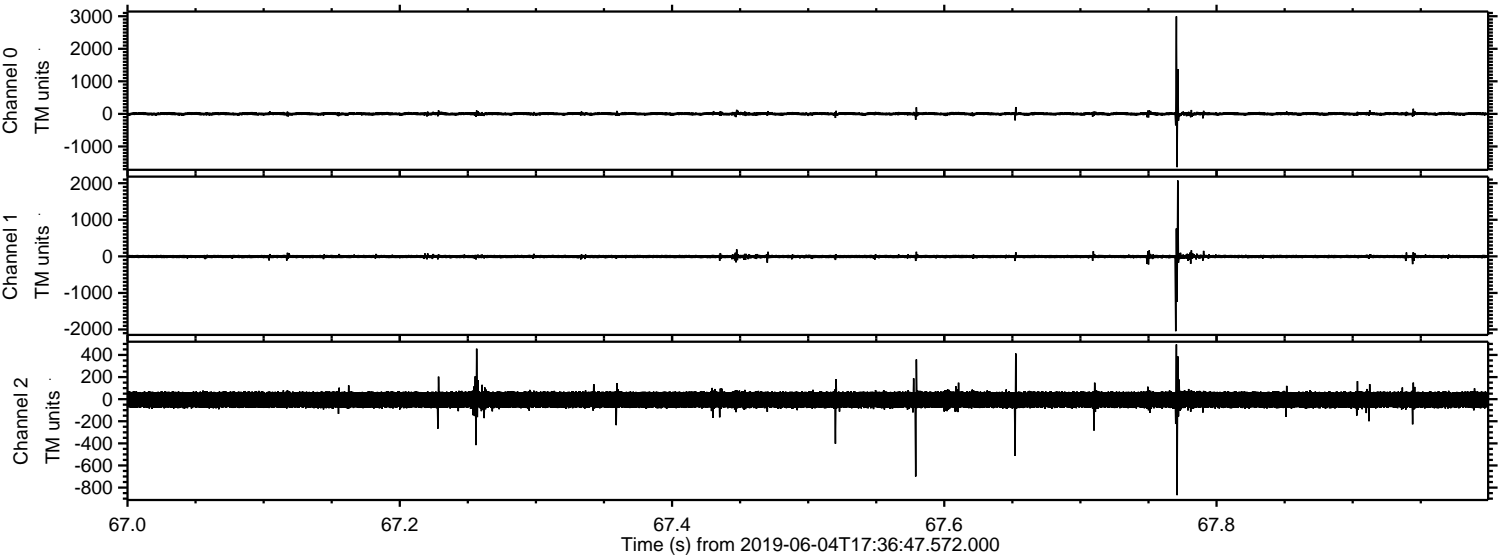
mn: -3108
mx: 2573
 μ : -5.6
 σ : 54.6

ELMAVAN 3D WAVEFORMS (Measured data sampled at 50 kHz) 51000 packets of 144 samples from 2019-06-04T17:36:47.572.000. Part 140/147

Processed Tue Jun 4 19:44:26 2019 by ELM ver.2012-10-06 from 001__elm20190604_173646__dat00.bin

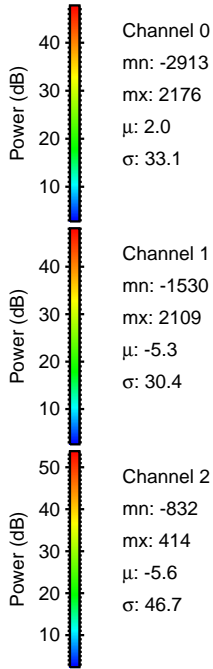
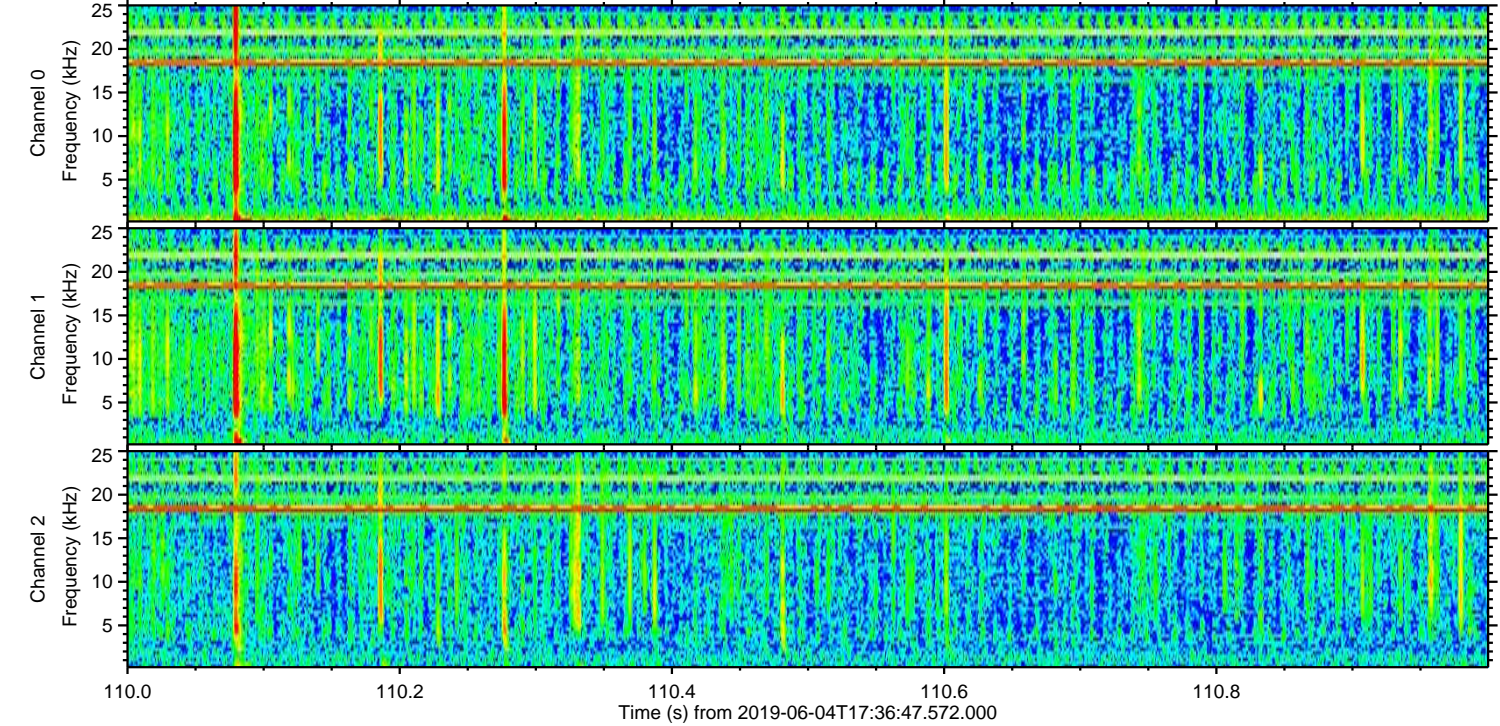
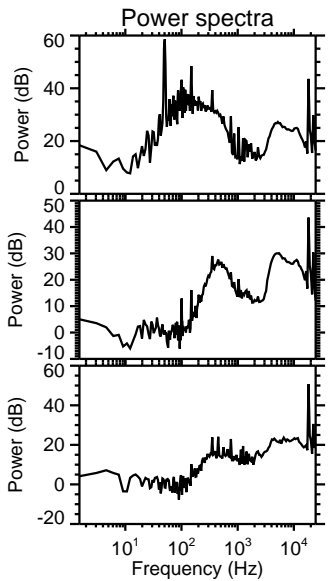
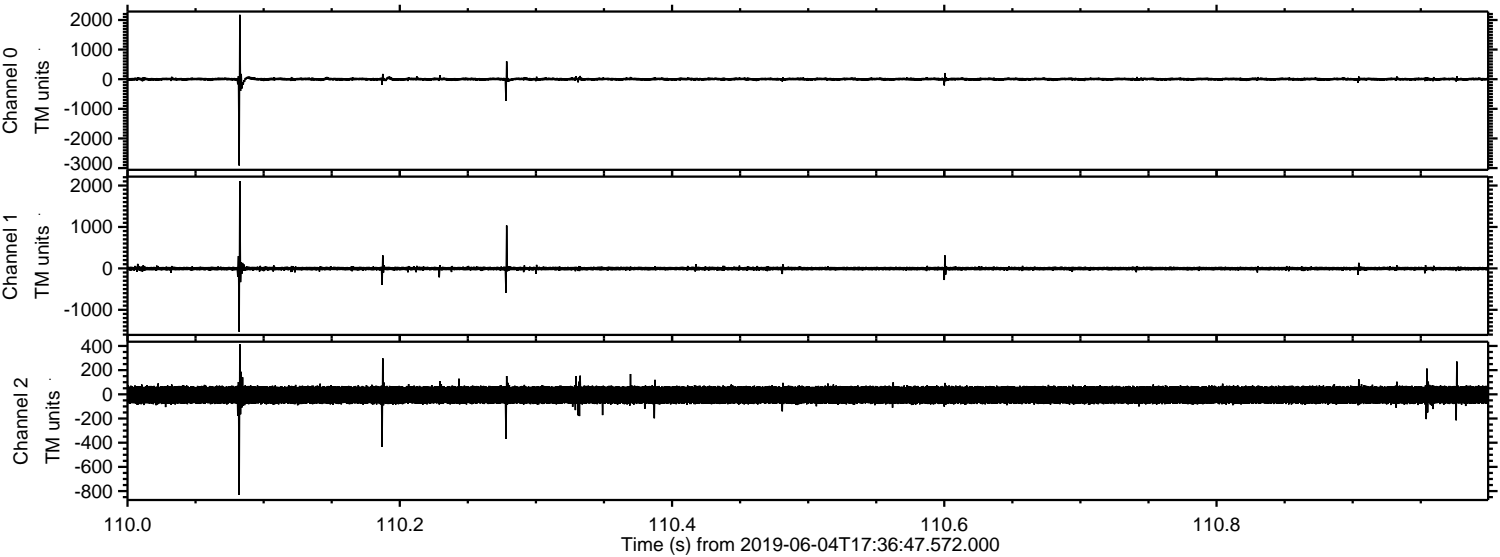


Processed Tue Jun 4 19:44:27 2019 by ELM ver.2012-10-06 from 001__elm20190604_173646__dat00.bin



ELMAVAN 3D WAVEFORMS (Measured data sampled at 50 kHz) 51000 packets of 144 samples from 2019-06-04T17:36:47.572.000. Part 111/147

Processed Tue Jun 4 19:44:27 2019 by ELM ver.2012-10-06 from 001__elm20190604_173646__dat00.bin

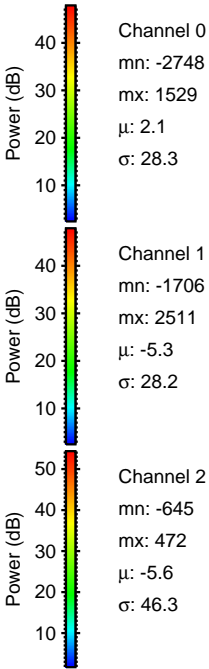
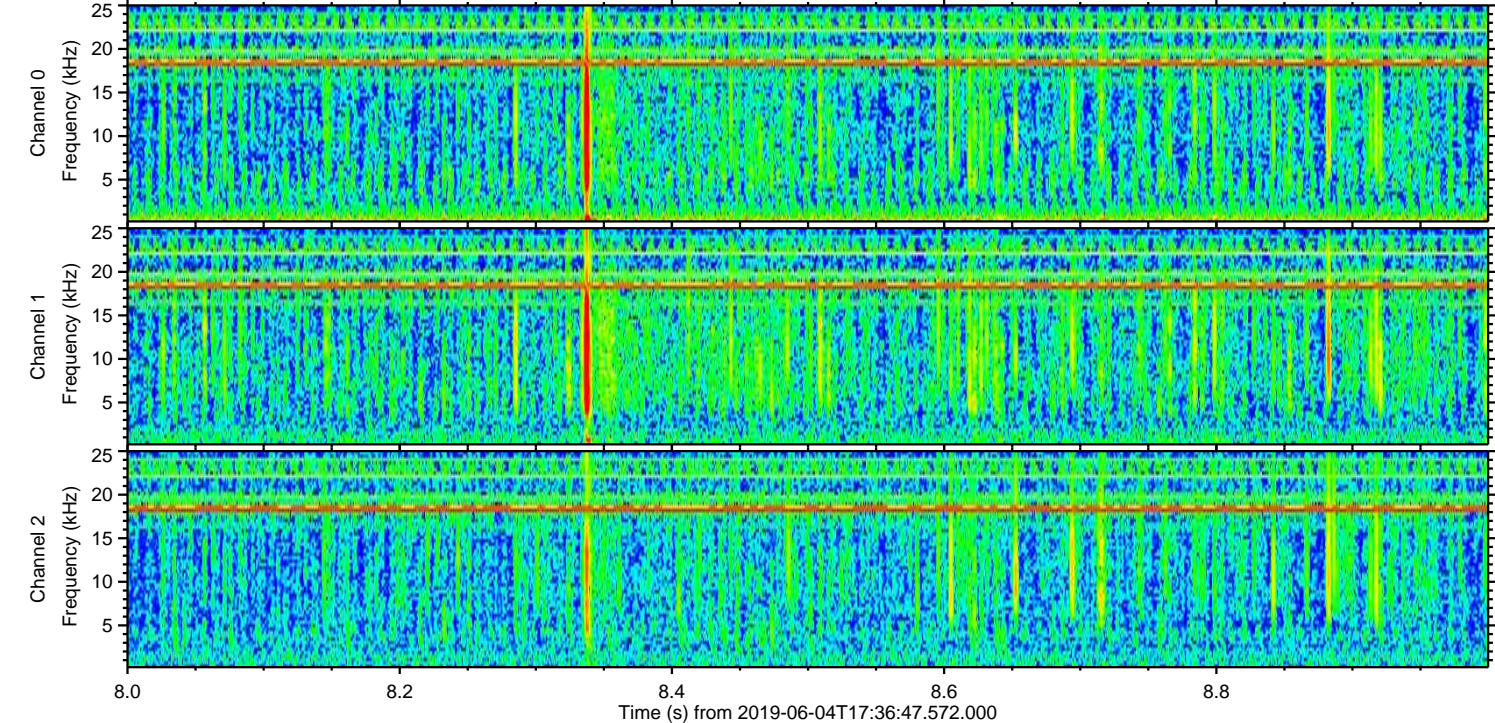
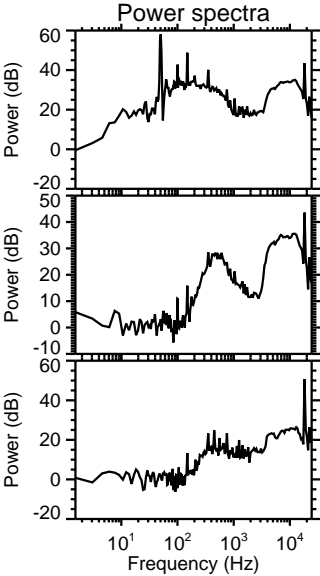
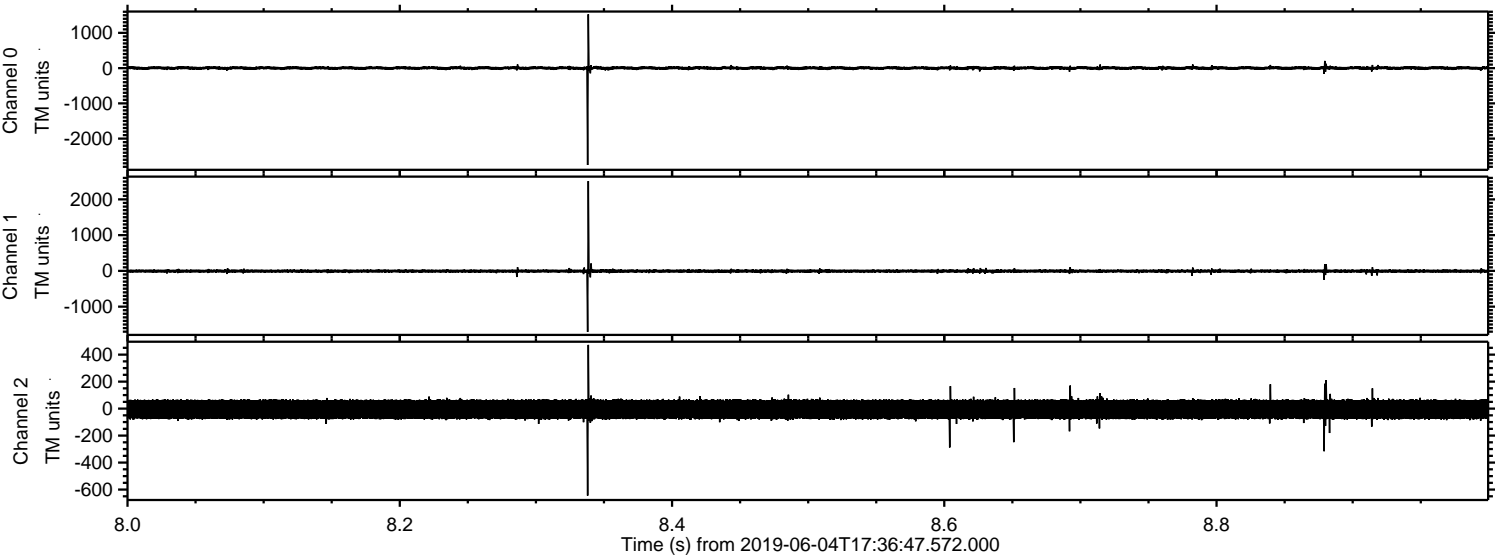


Channel 0
mn: -2913
mx: 2176
 μ : 2.0
 σ : 33.1

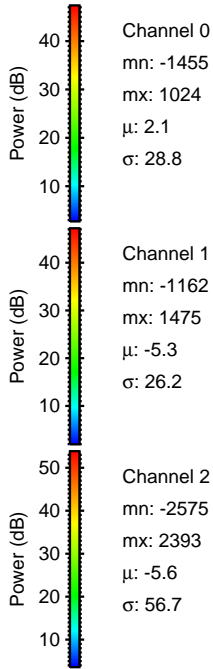
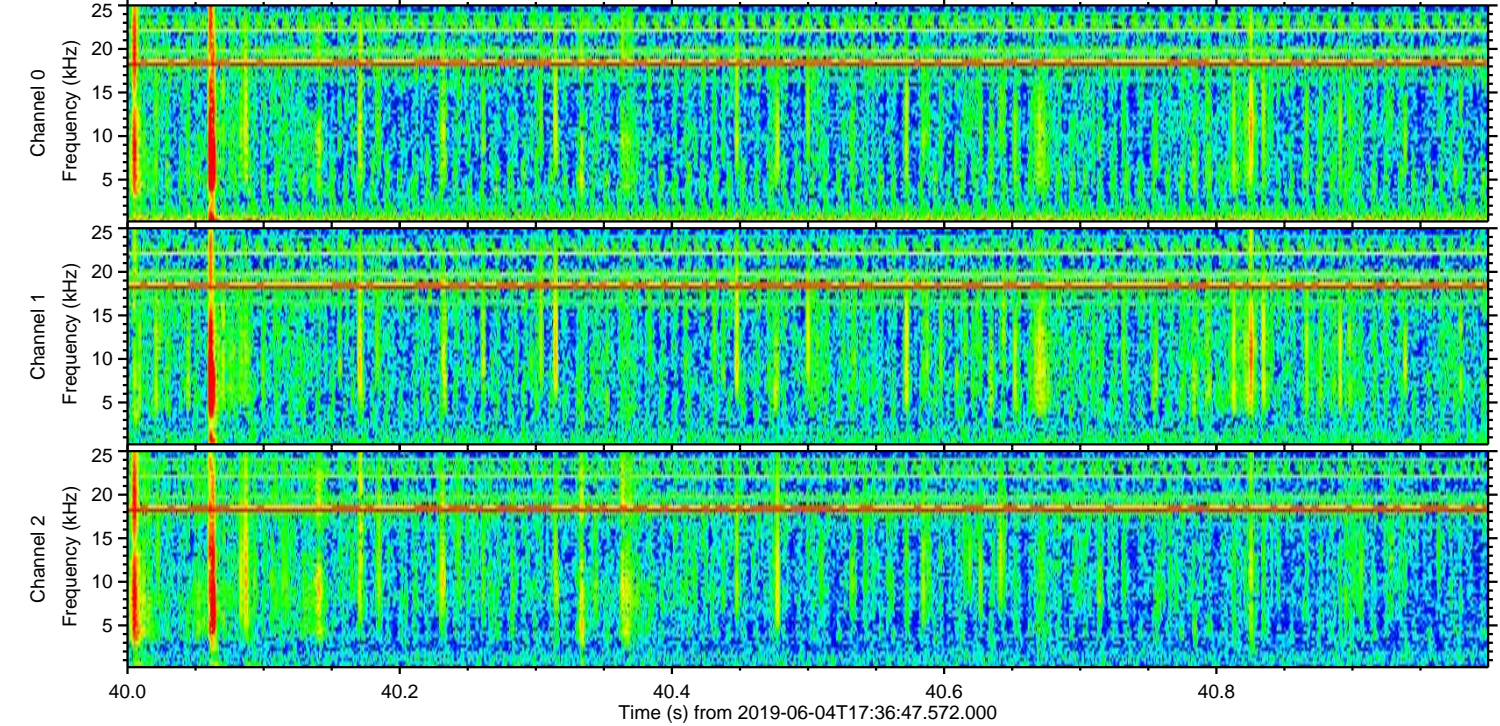
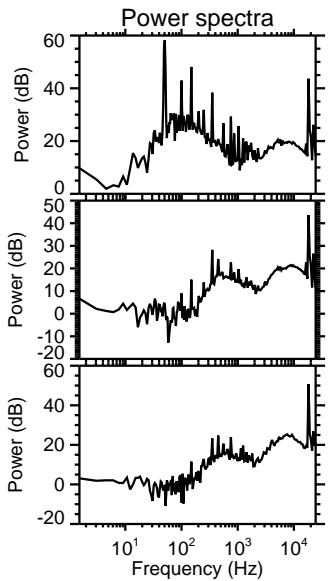
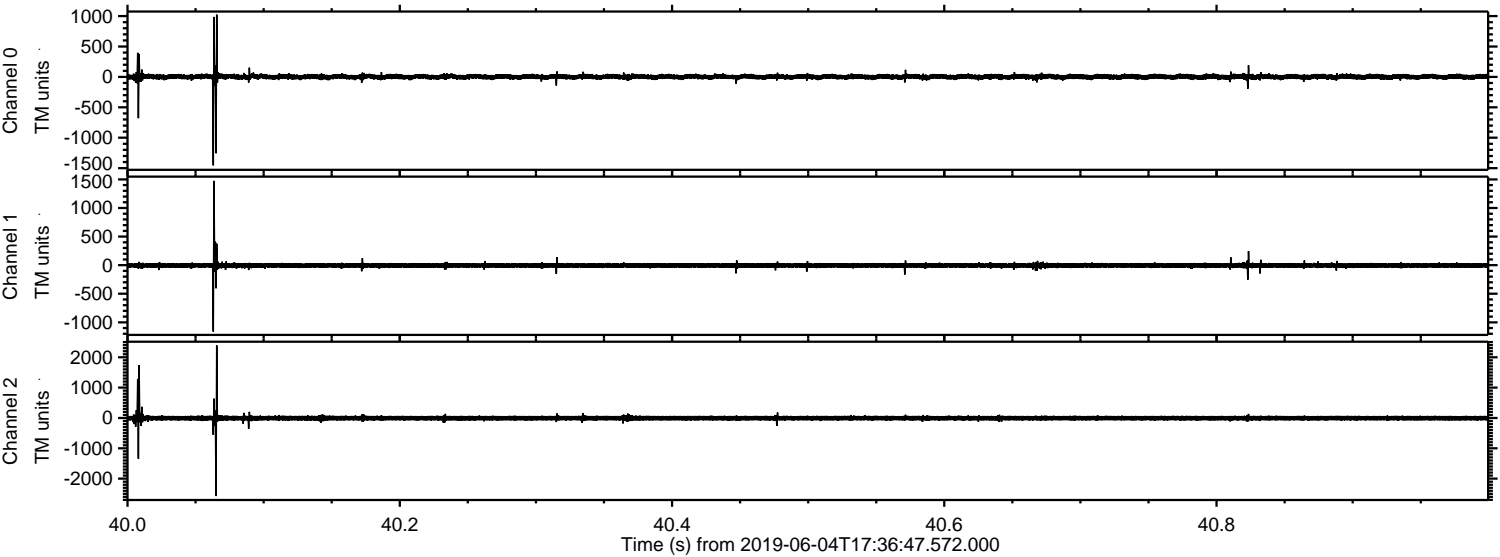
Channel 1
mn: -1530
mx: 2109
 μ : -5.3
 σ : 30.4

Channel 2
mn: -832
mx: 414
 μ : -5.6
 σ : 46.7

Processed Tue Jun 4 19:44:28 2019 by ELM ver.2012-10-06 from 001__elm20190604_173646__dat00.bin



Processed Tue Jun 4 19:44:29 2019 by ELM ver.2012-10-06 from 001__elm20190604_173646__dat00.bin



Processed Tue Jun 4 19:44:29 2019 by ELM ver.2012-10-06 from 001__elm20190604_173646__dat00.bin

