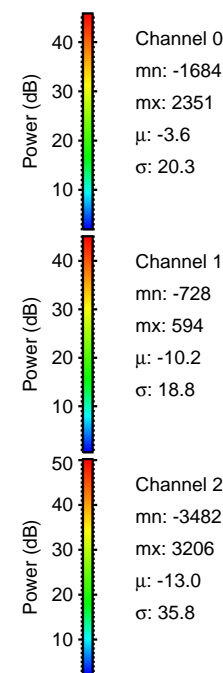
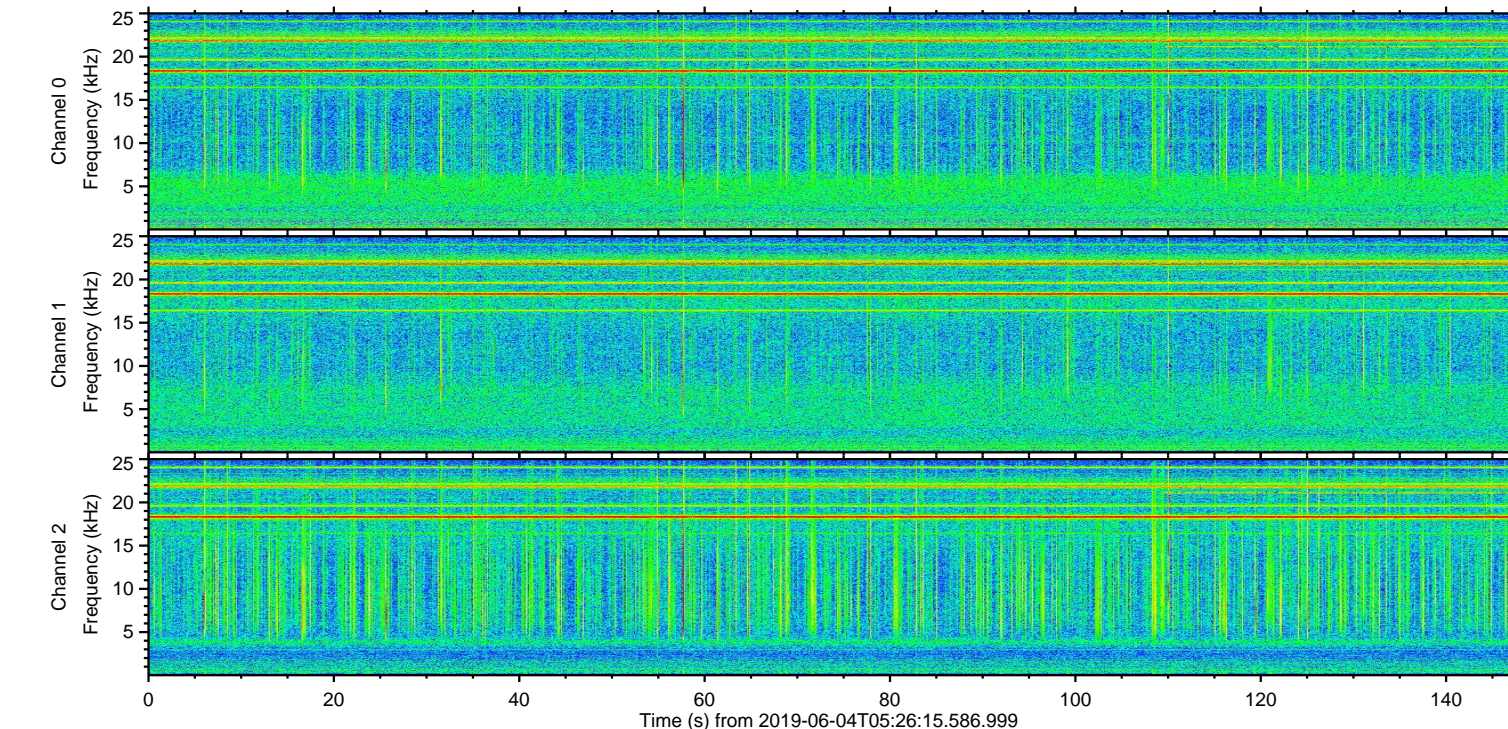
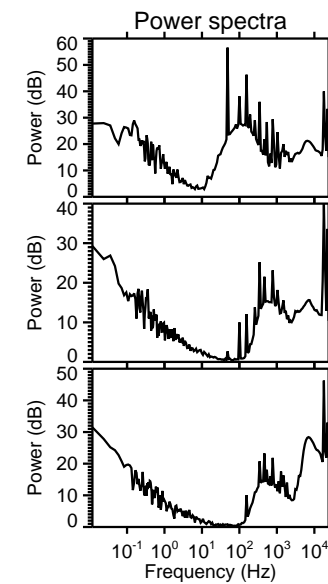
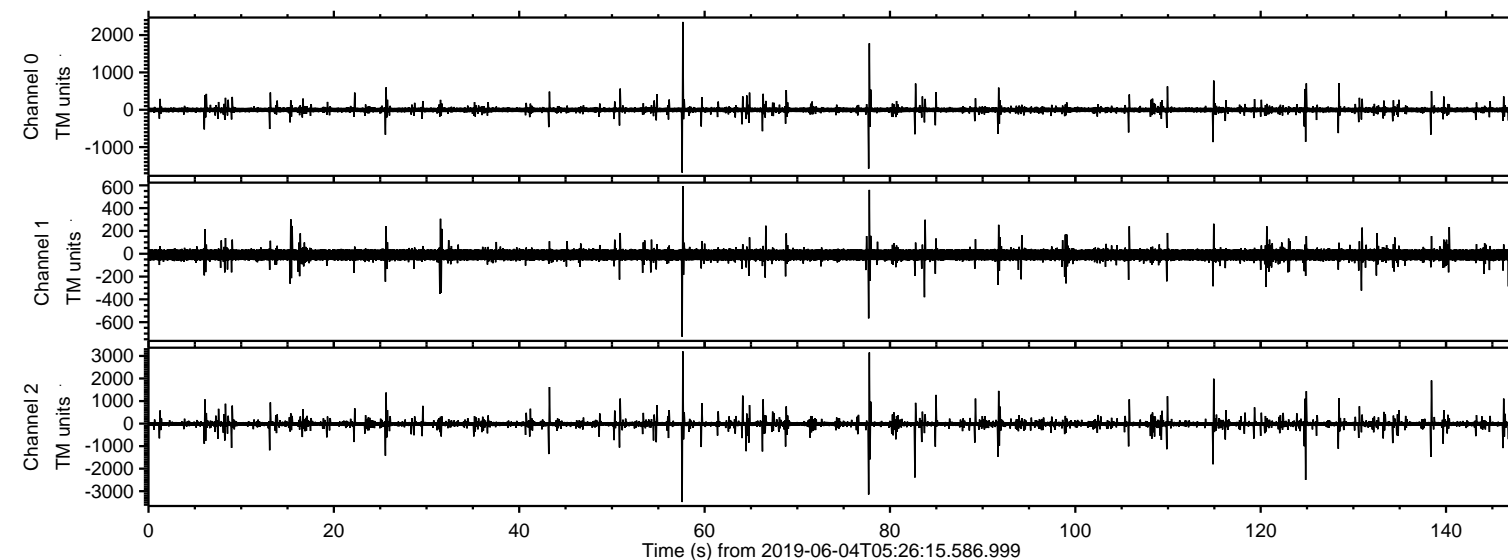
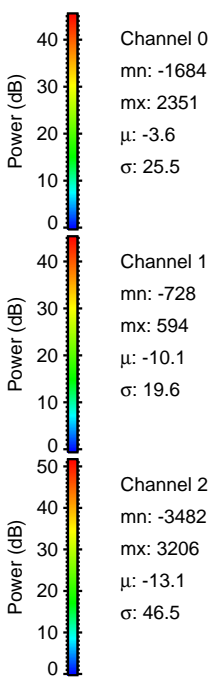
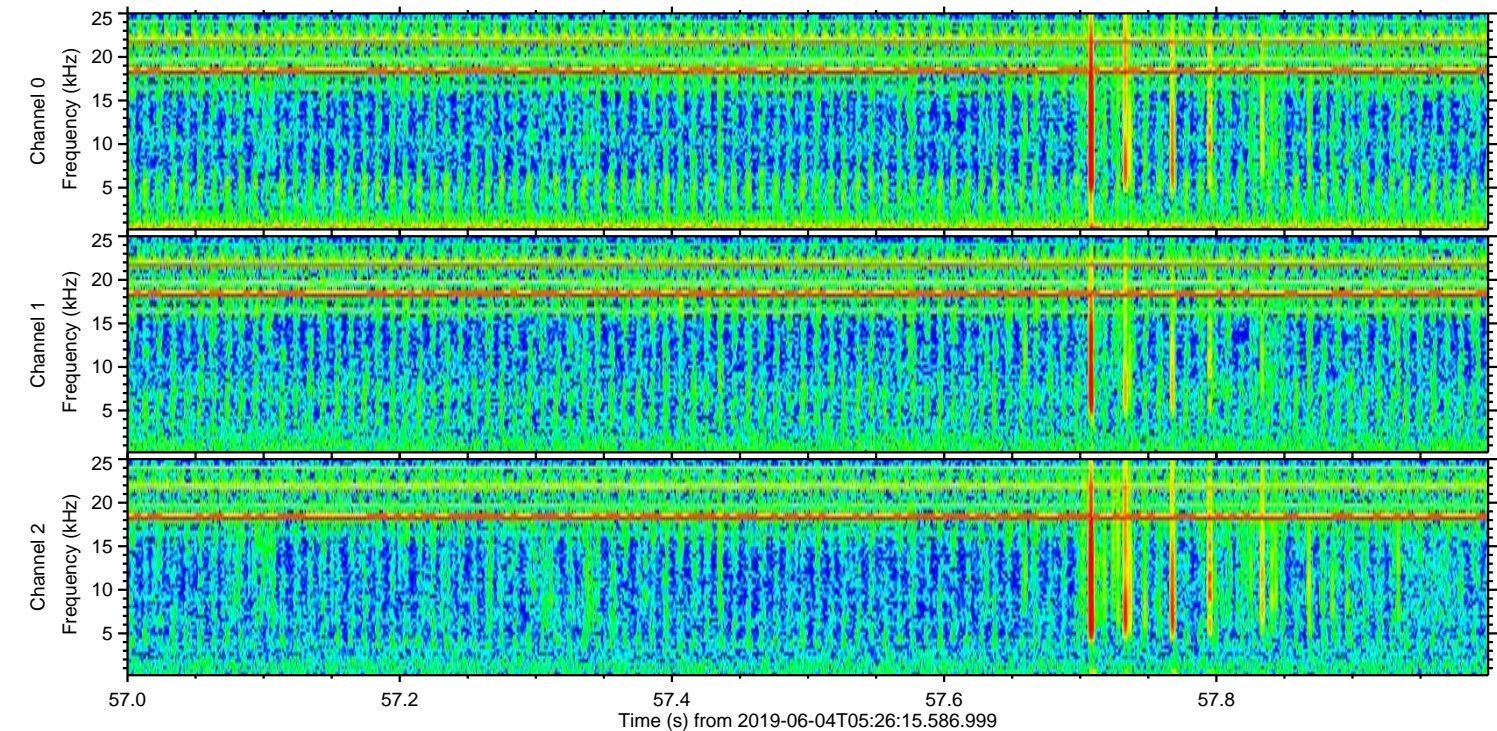
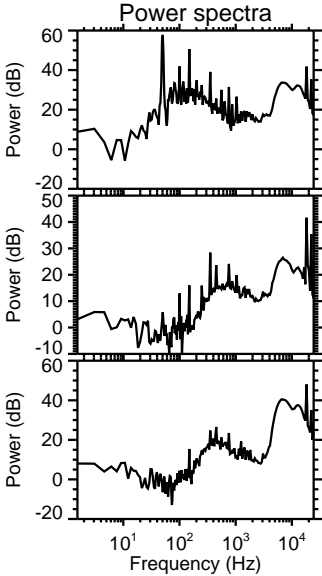
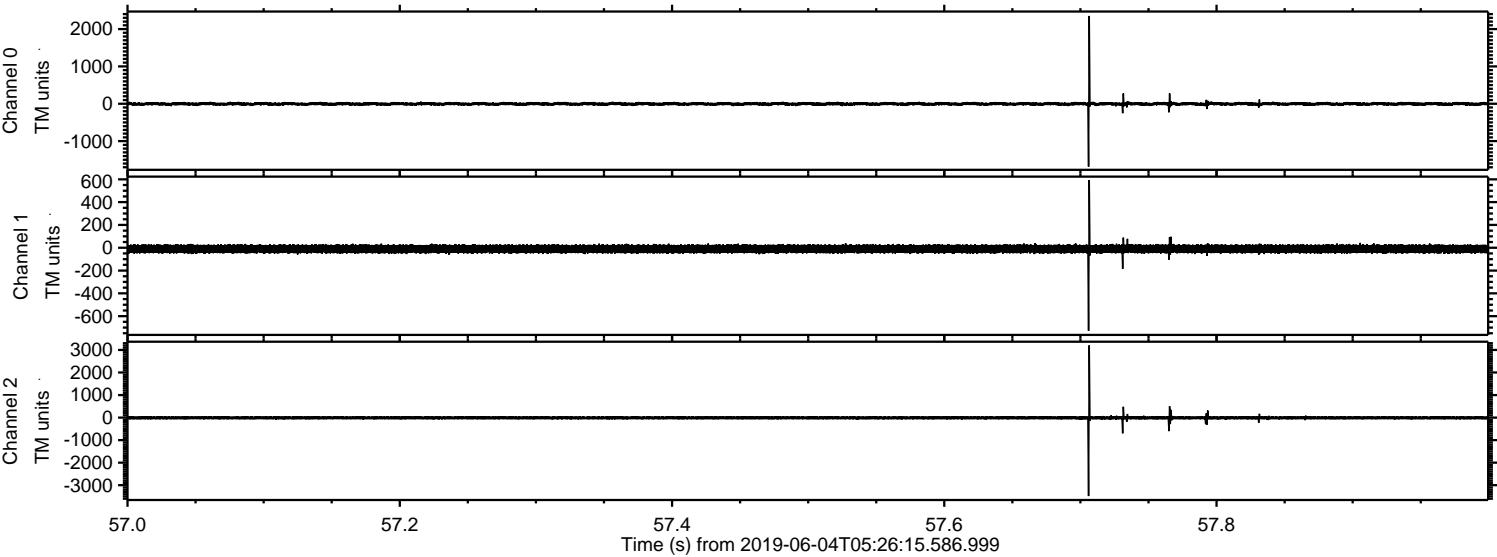


ELMAVAN 3D WAVEFORMS (Measured data sampled at 50 kHz) 51000 packets of 144 samples from 2019-06-04T05:26:15.586.999.

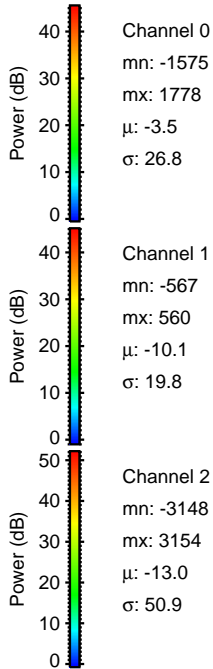
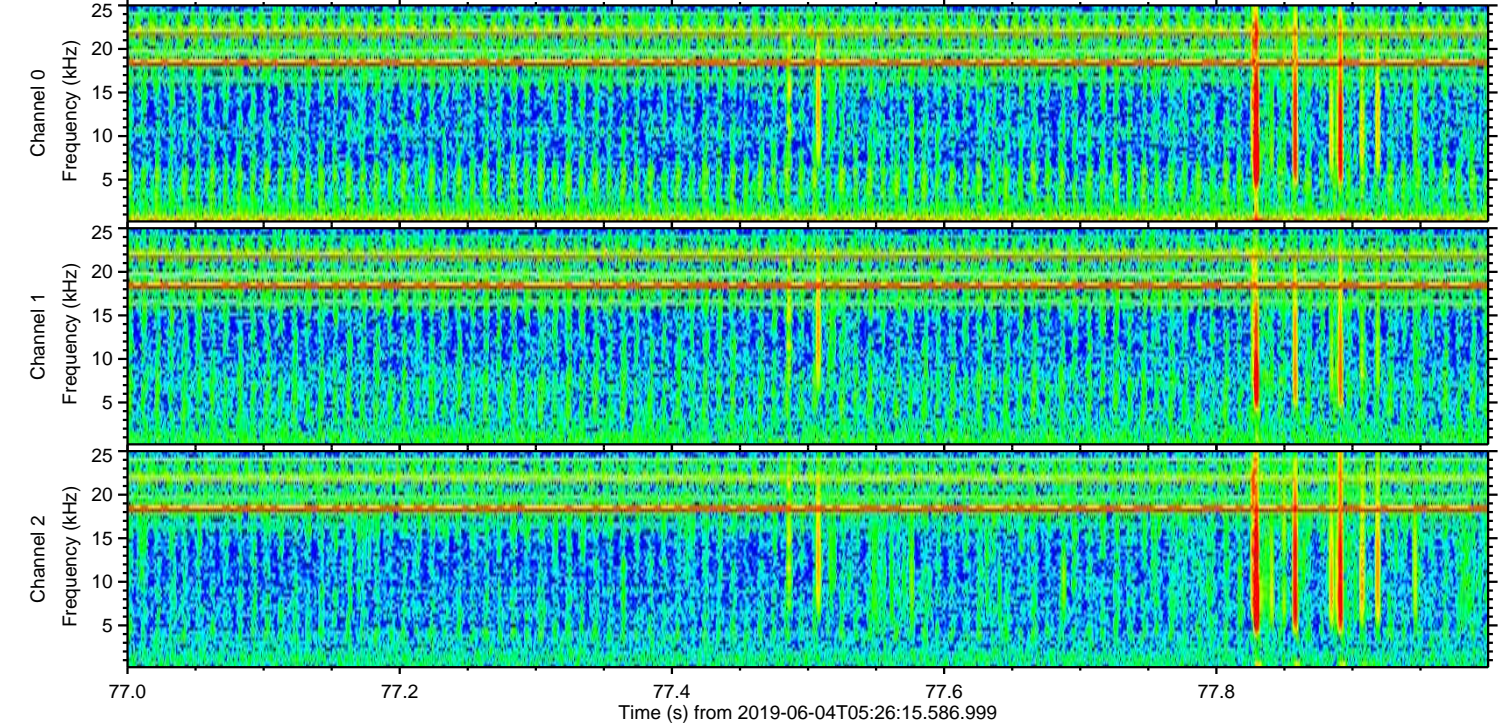
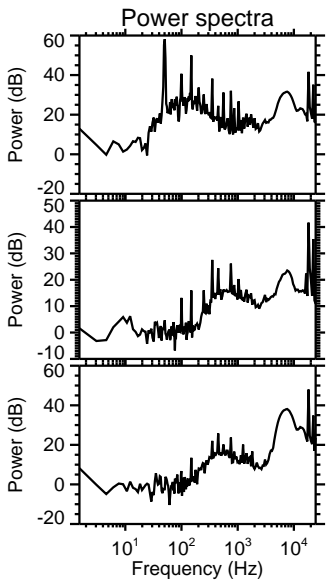
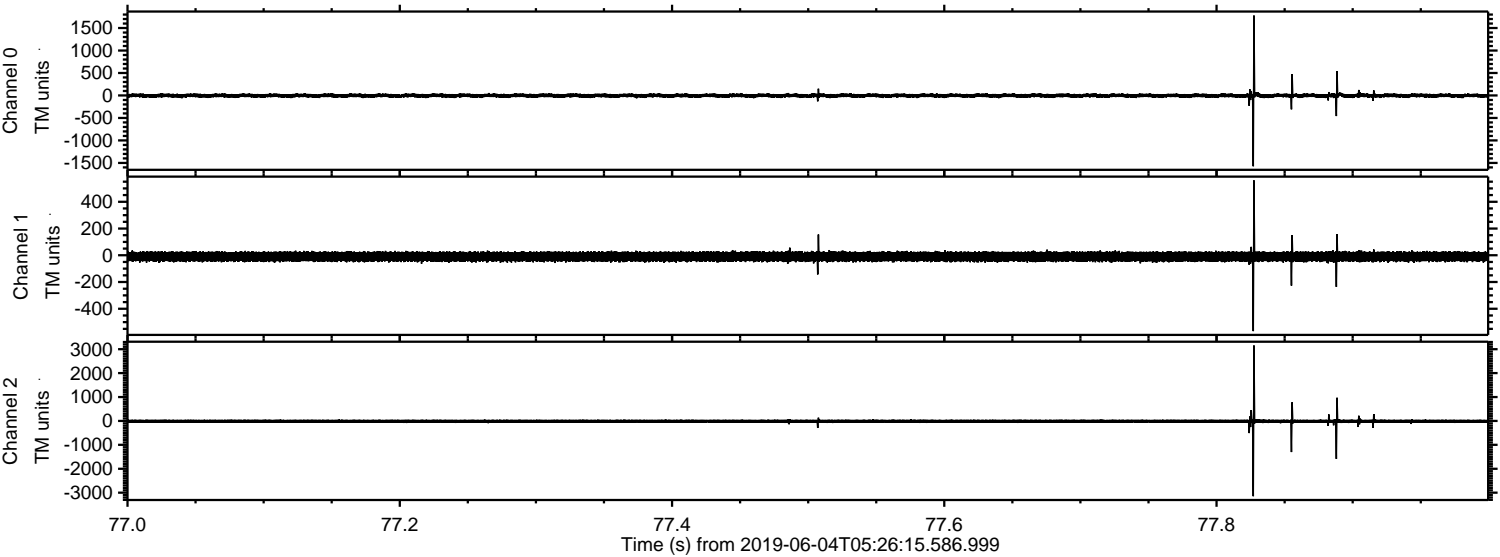
Processed Tue Jun 4 07:34:06 2019 by ELM ver.2012-10-06 from 001__elm20190604_052614__dat00.bin



Processed Tue Jun 4 07:34:11 2019 by ELM ver.2012-10-06 from 001__elm20190604_052614__dat00.bin

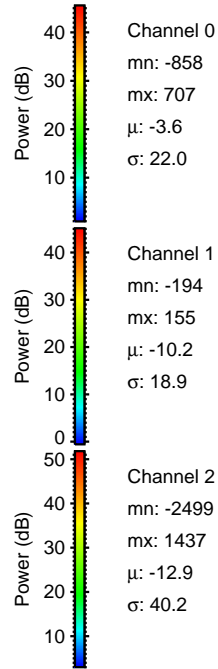
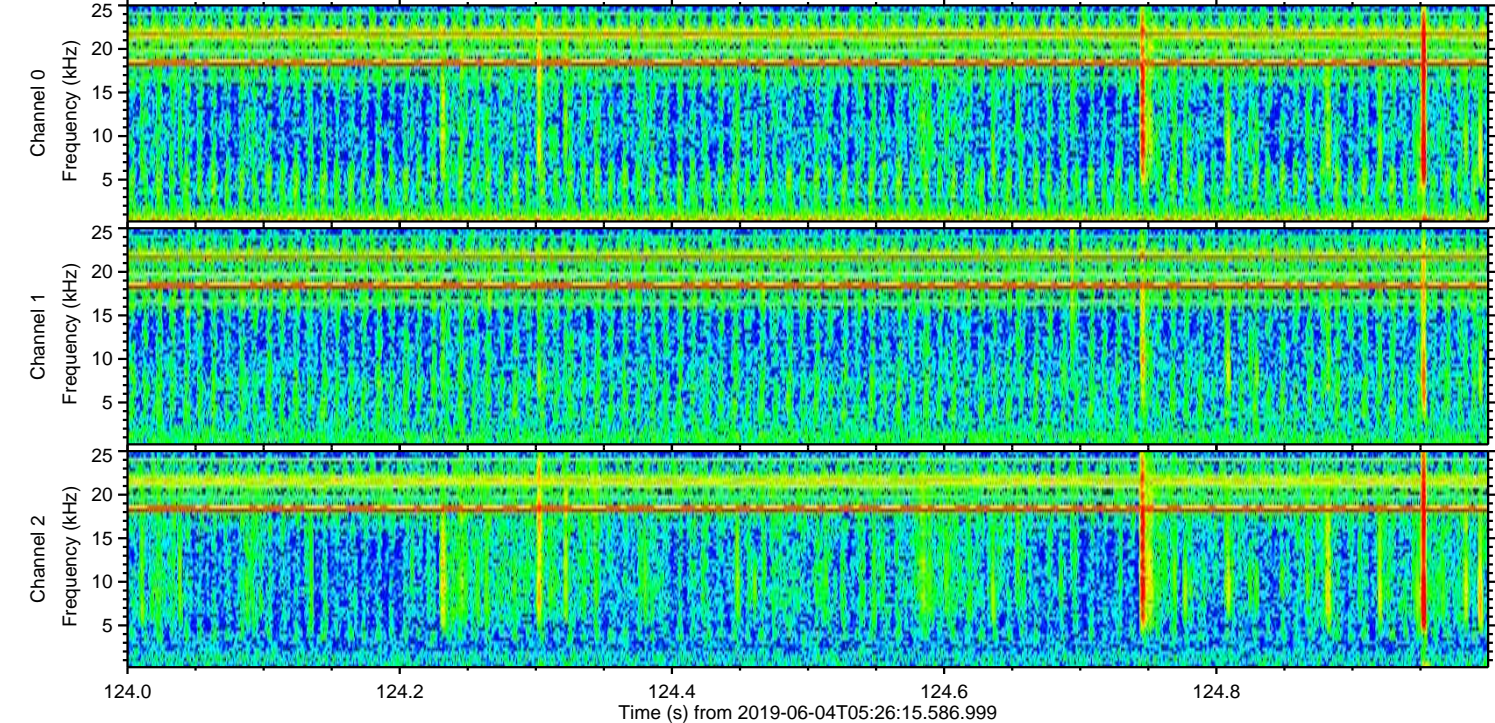
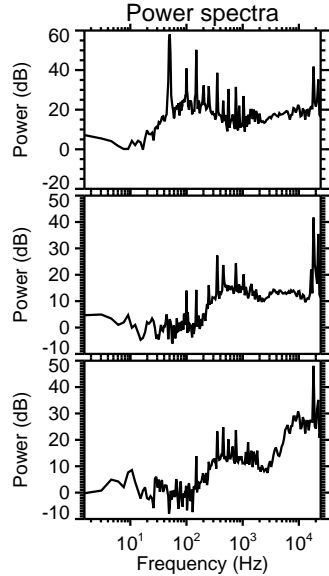
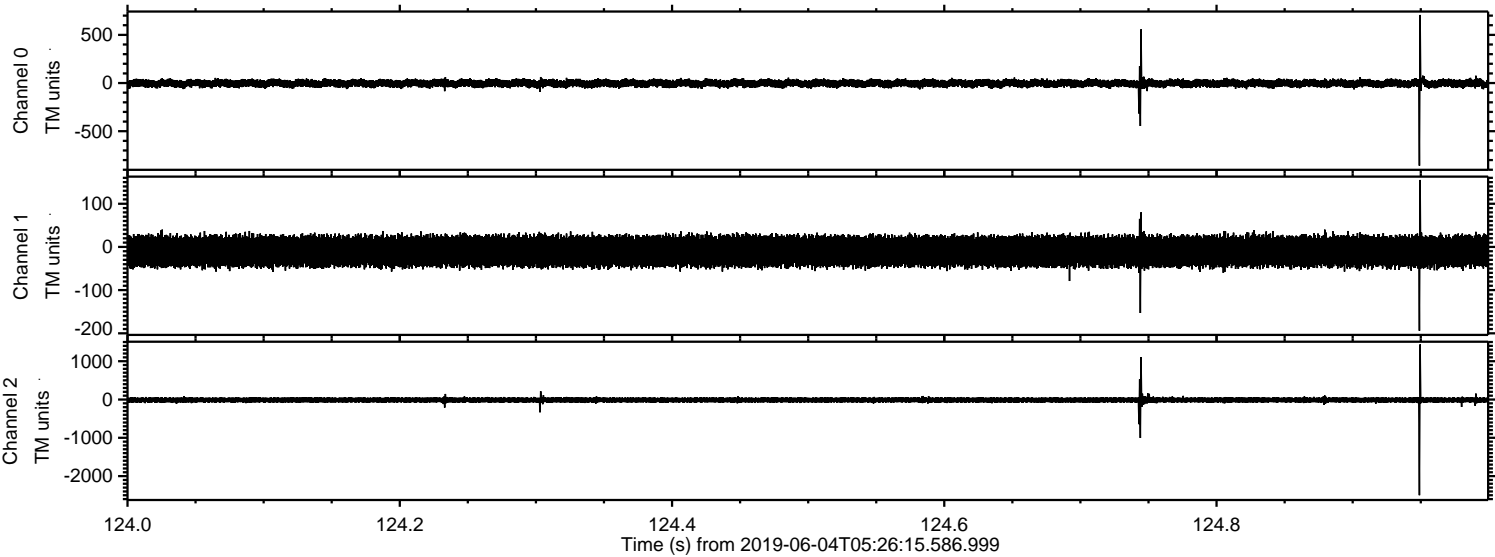


Processed Tue Jun 4 07:34:12 2019 by ELM ver.2012-10-06 from 001__elm20190604_052614__dat00.bin

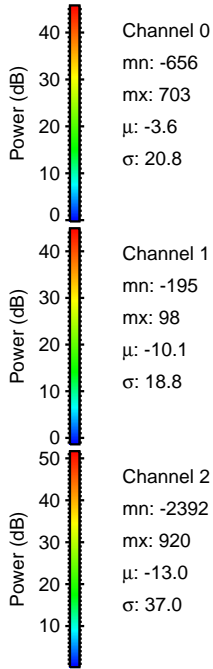
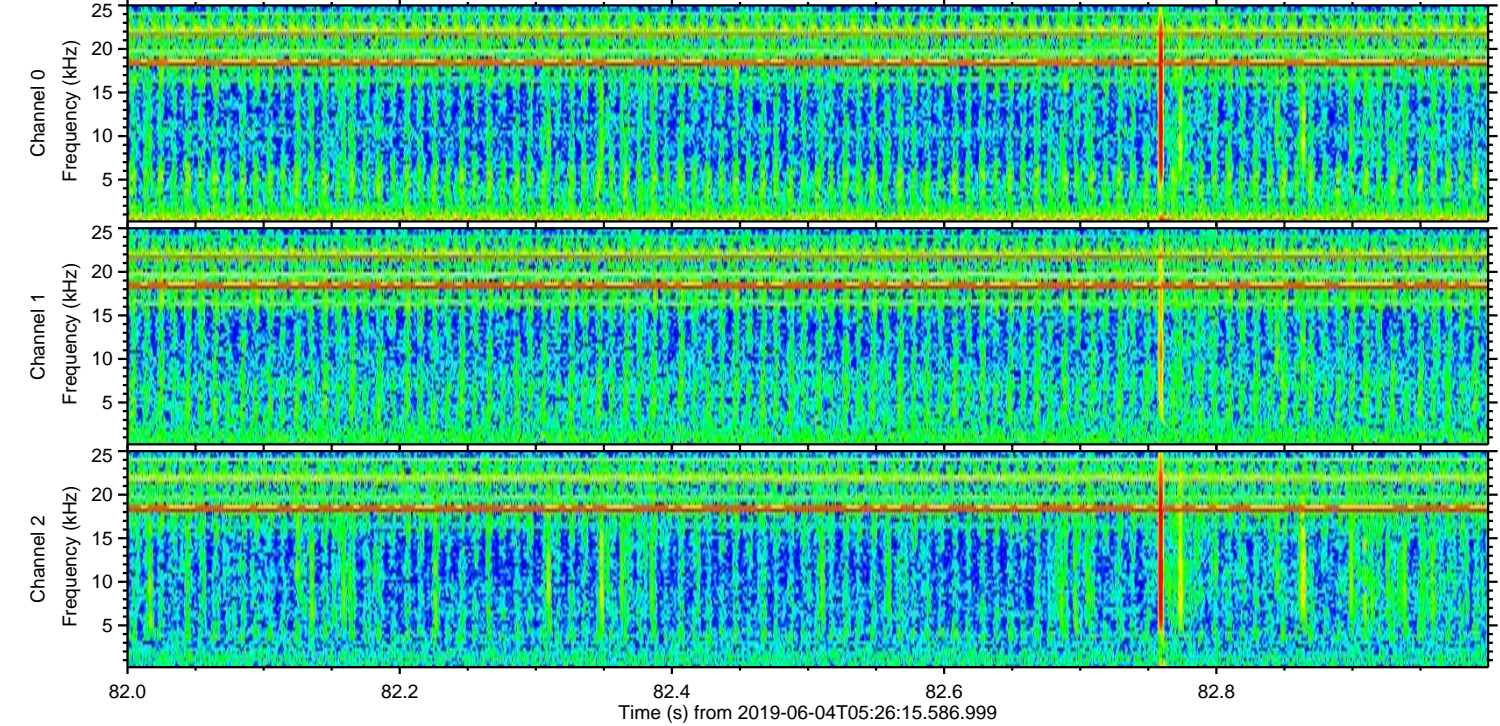
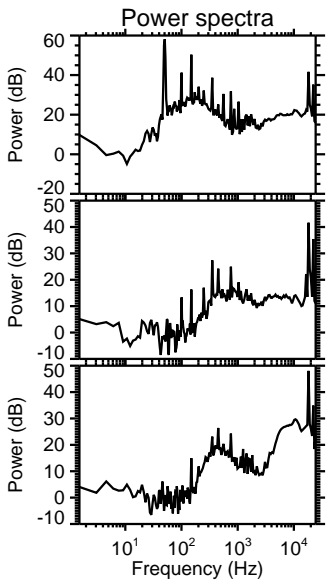
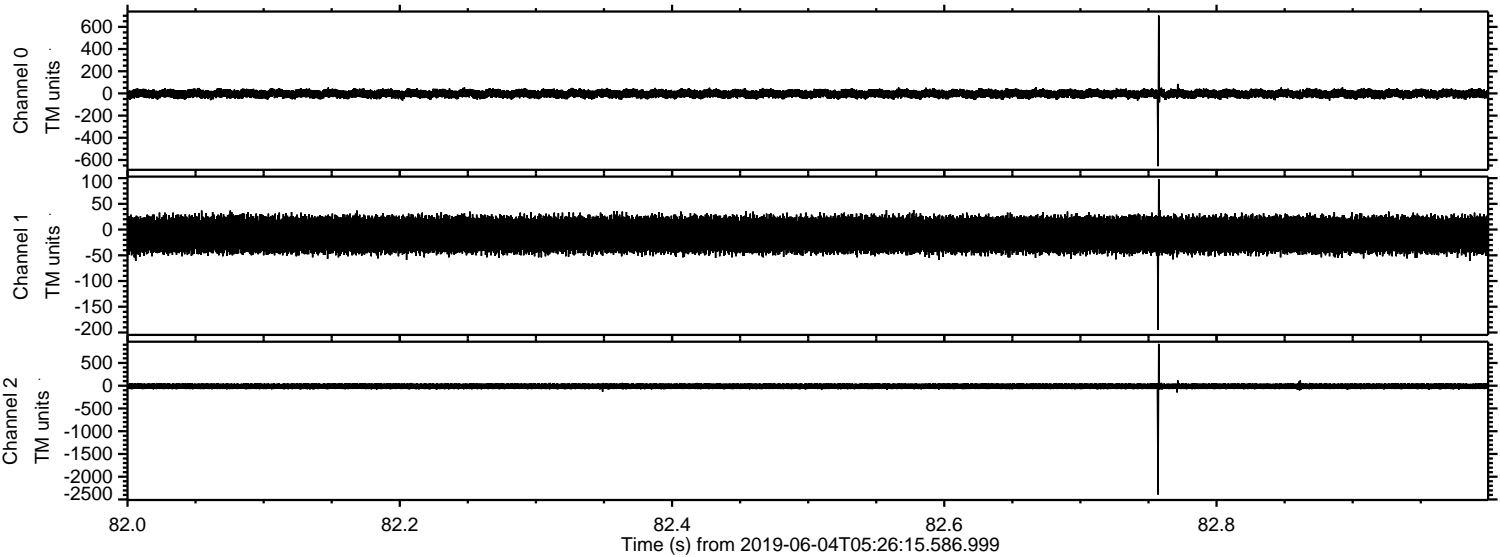


ELMAVAN 3D WAVEFORMS (Measured data sampled at 50 kHz) 51000 packets of 144 samples from 2019-06-04T05:26:15.586.999. Part 125/147

Processed Tue Jun 4 07:34:13 2019 by ELM ver.2012-10-06 from 001__elm20190604_052614__dat00.bin



Processed Tue Jun 4 07:34:14 2019 by ELM ver.2012-10-06 from 001__elm20190604_052614__dat00.bin



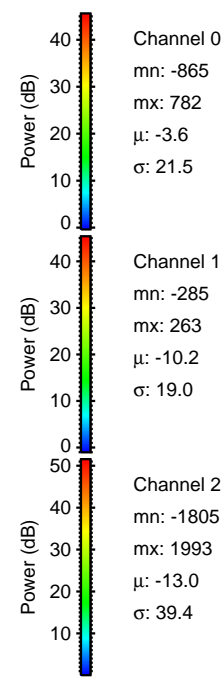
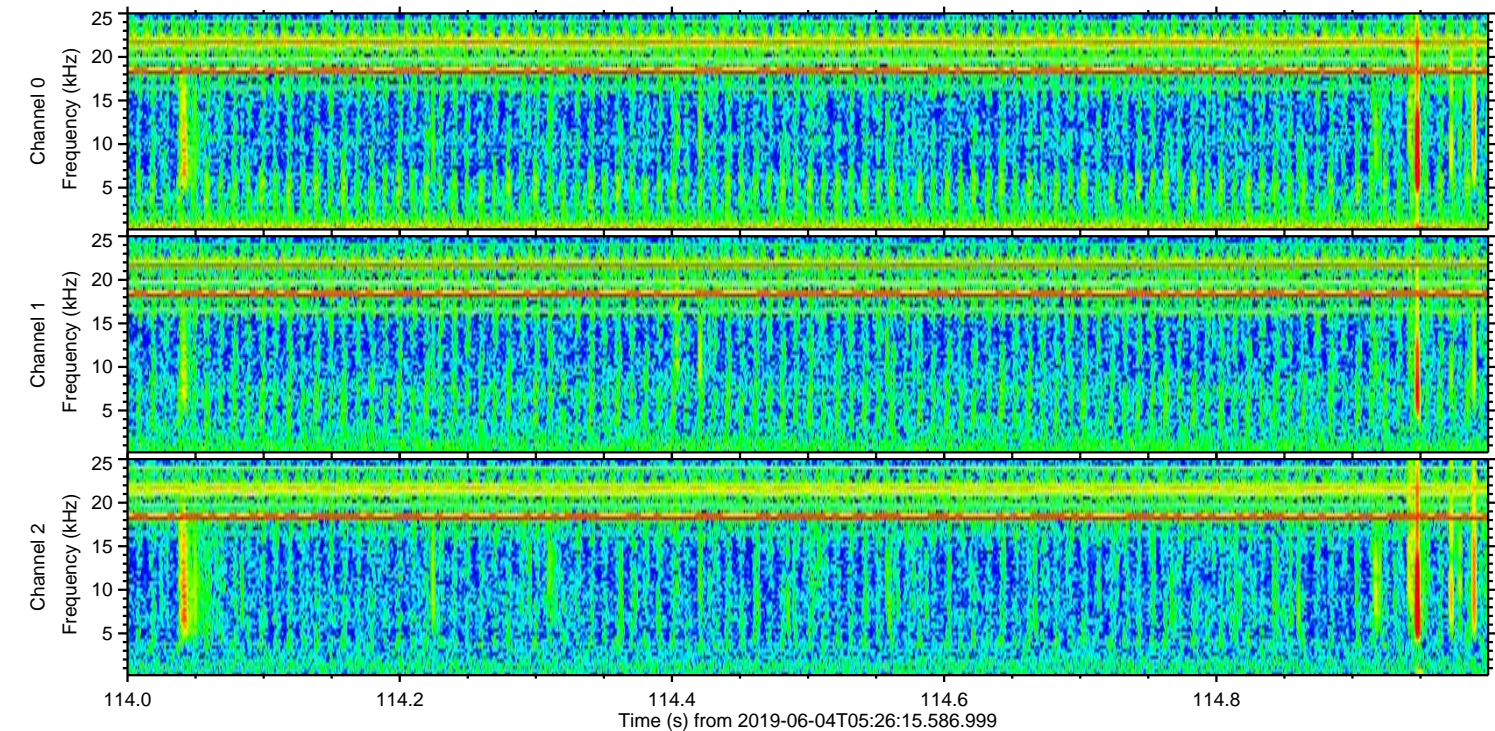
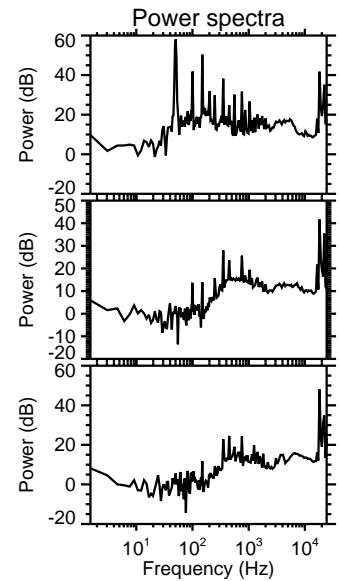
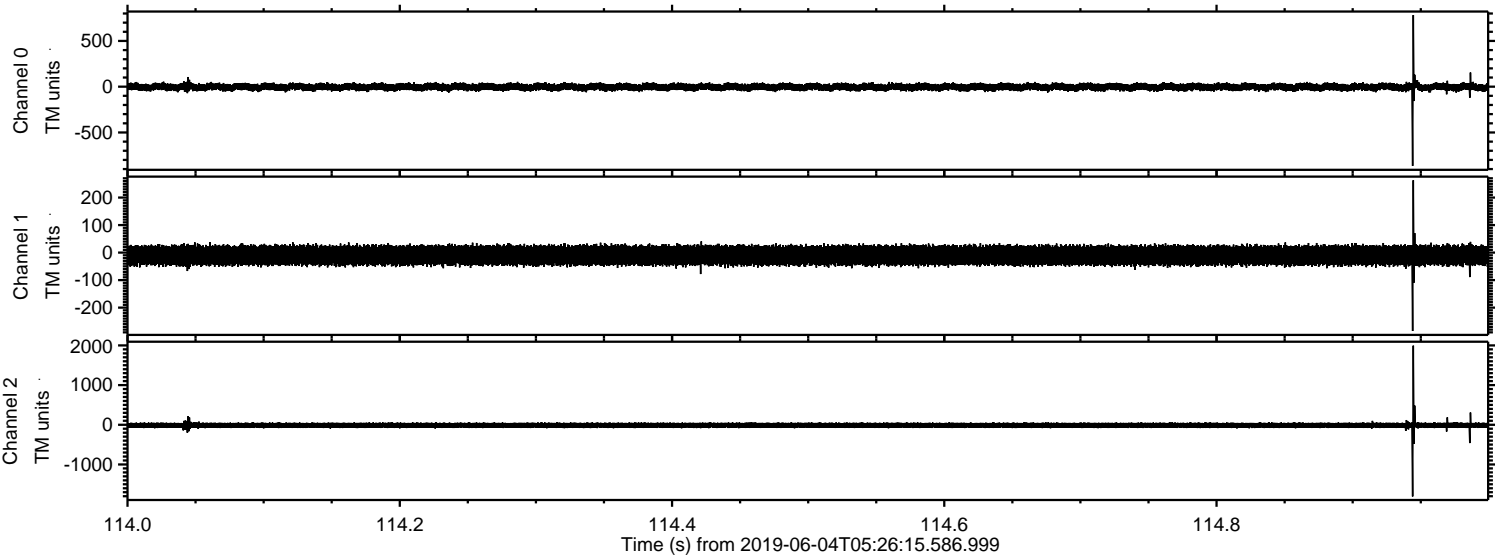
Channel 0
mn: -656
mx: 703
 μ : -3.6
 σ : 20.8

Channel 1
mn: -195
mx: 98
 μ : -10.1
 σ : 18.8

Channel 2
mn: -2392
mx: 920
 μ : -13.0
 σ : 37.0

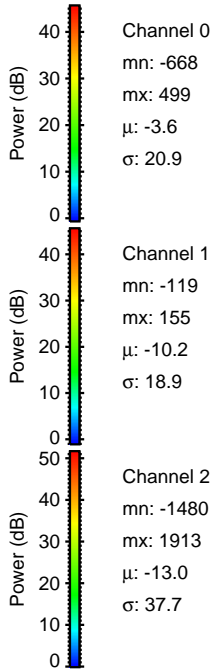
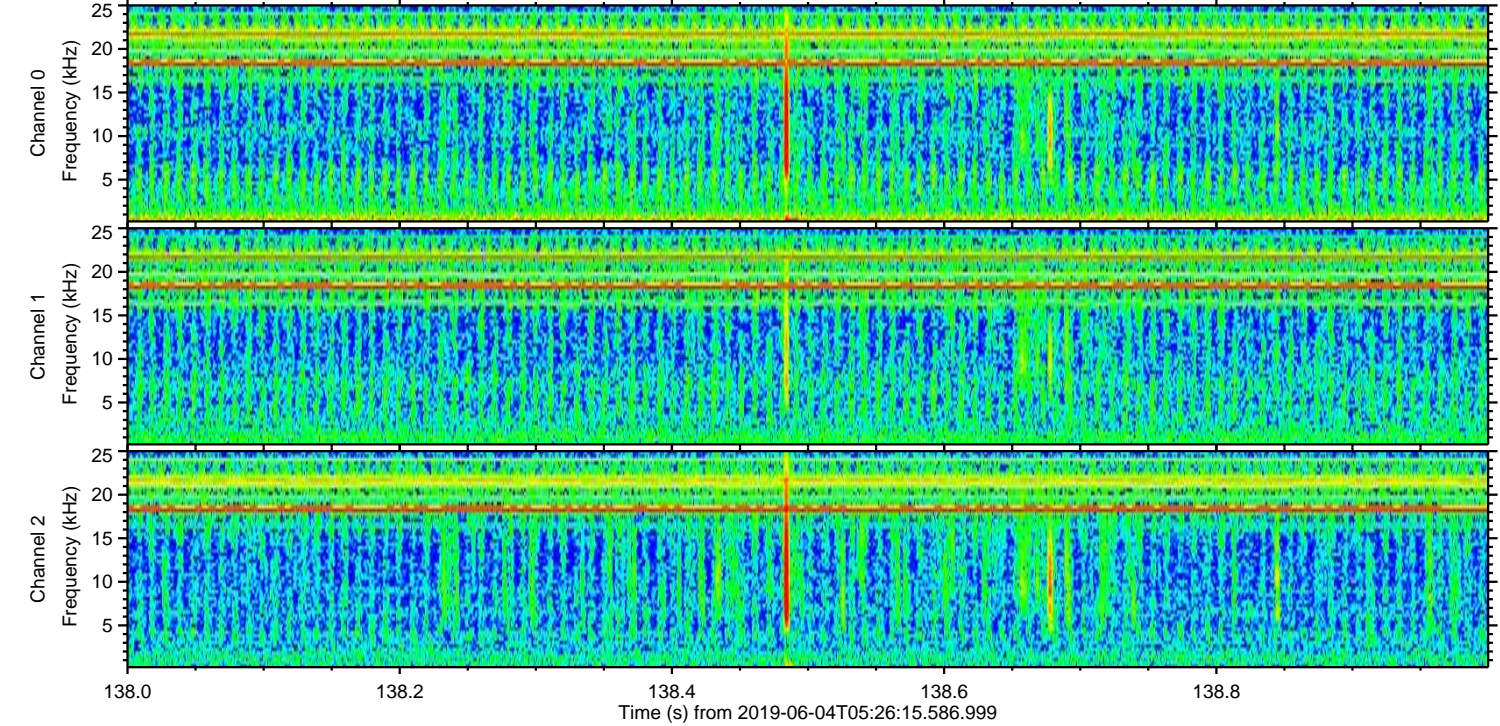
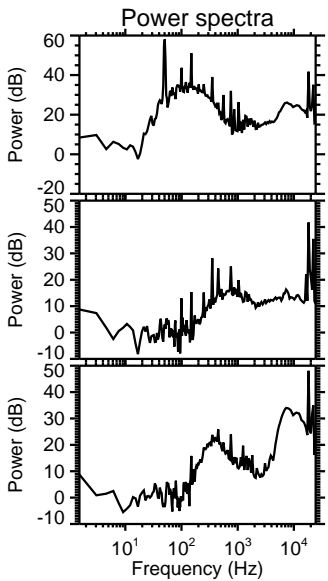
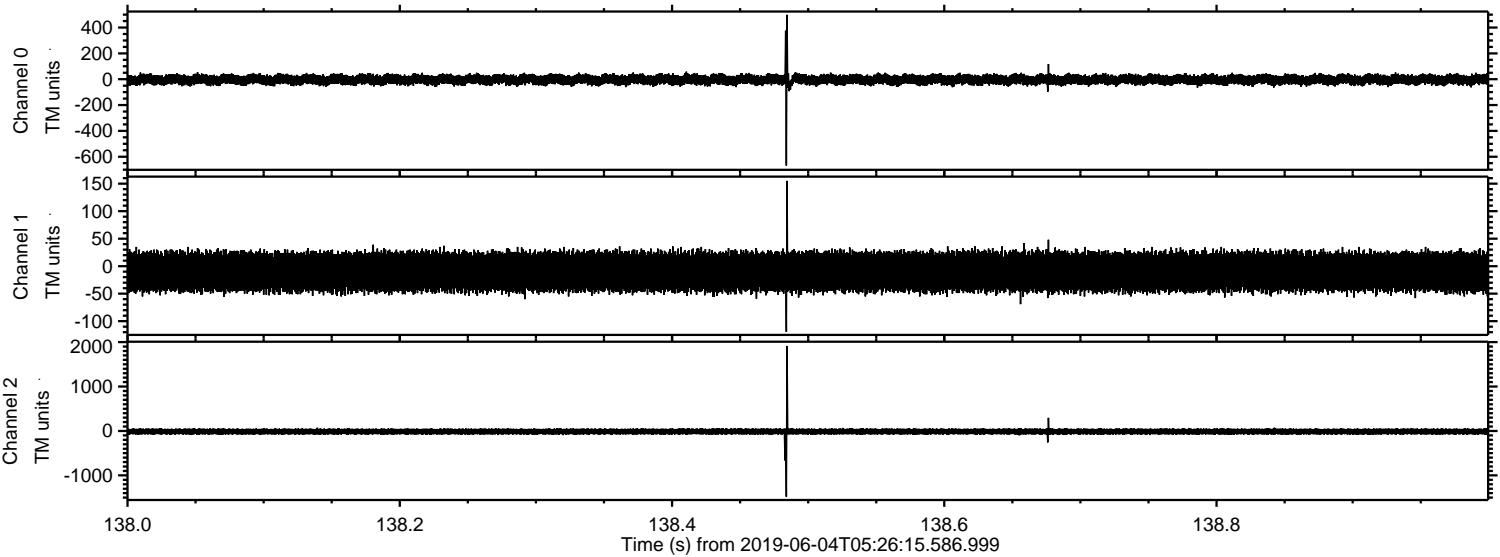
ELMAVAN 3D WAVEFORMS (Measured data sampled at 50 kHz) 51000 packets of 144 samples from 2019-06-04T05:26:15.586.999. Part 115/147

Processed Tue Jun 4 07:34:14 2019 by ELM ver.2012-10-06 from 001__elm20190604_052614__dat00.bin

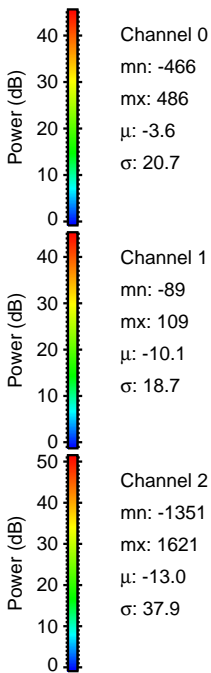
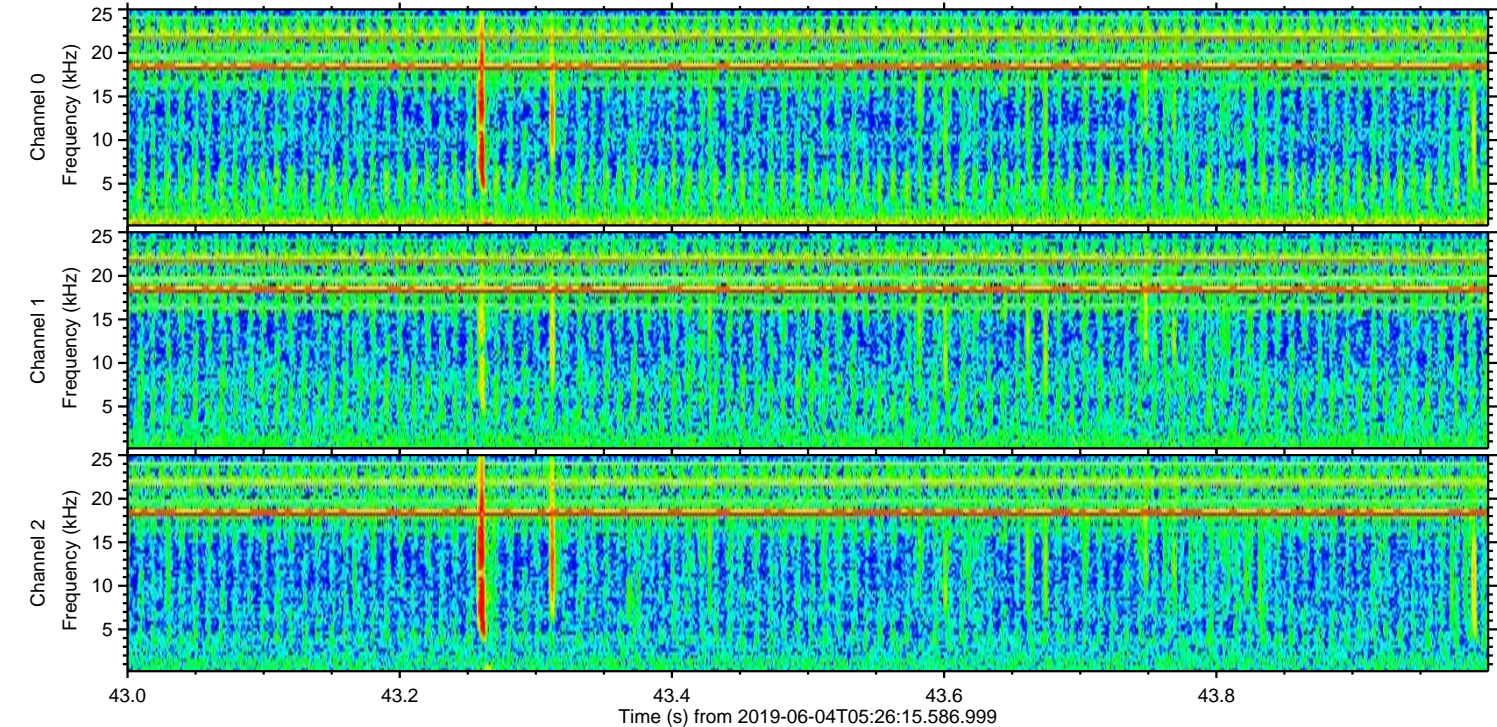
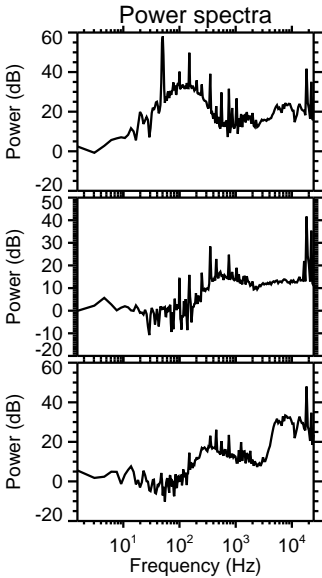
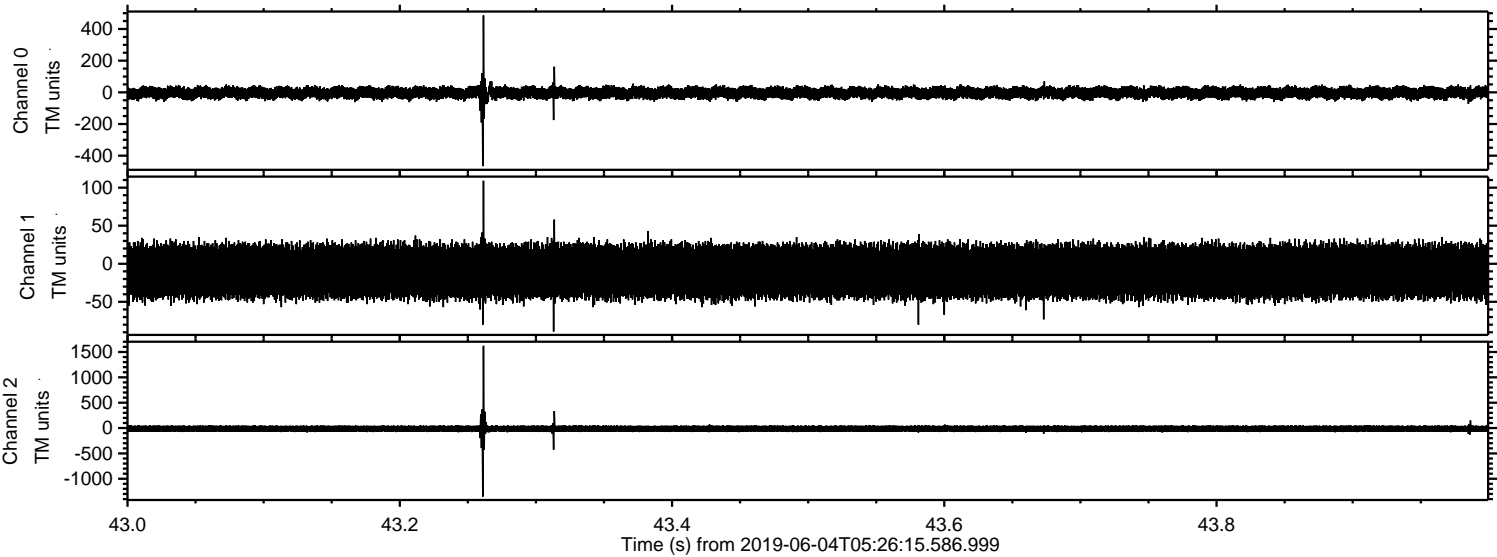


ELMAVAN 3D WAVEFORMS (Measured data sampled at 50 kHz) 51000 packets of 144 samples from 2019-06-04T05:26:15.586.999. Part 139/147

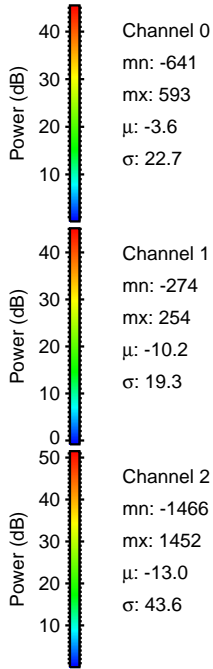
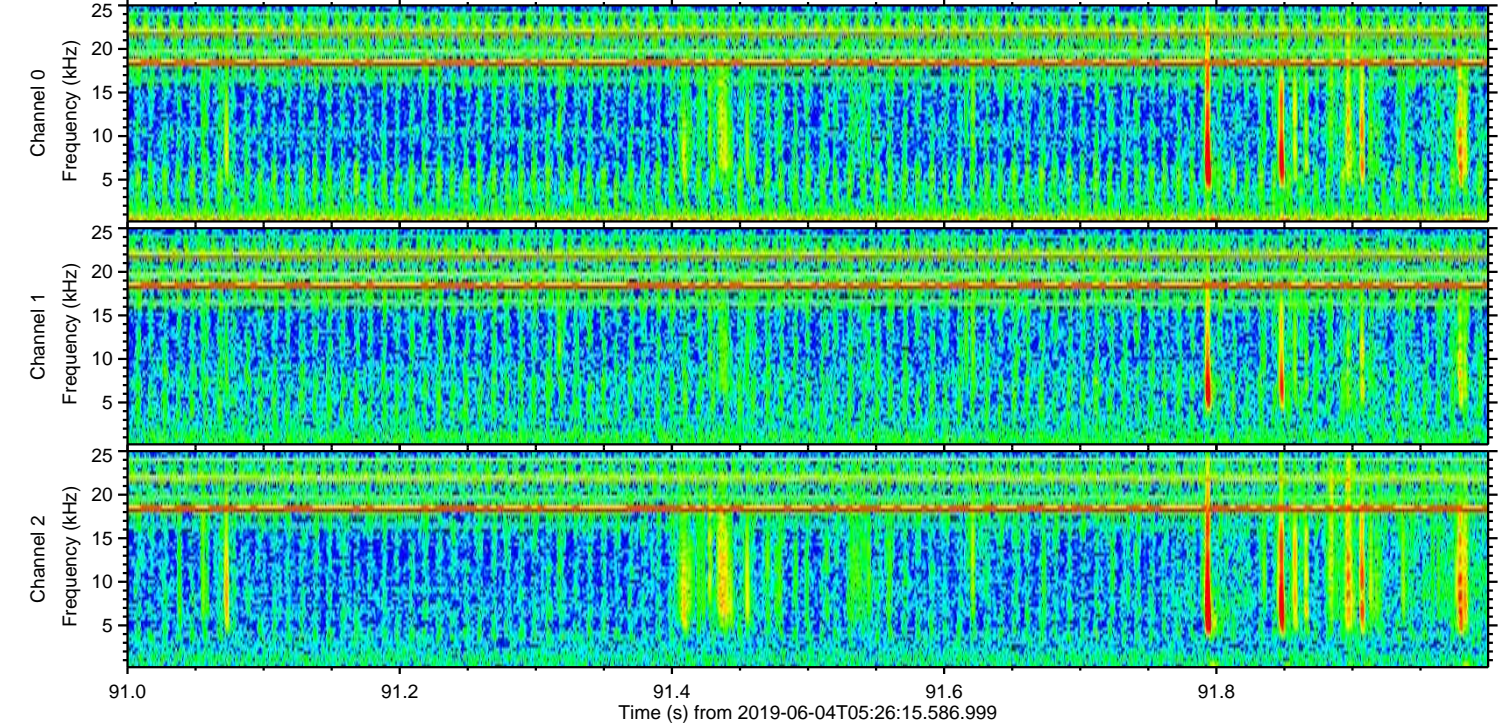
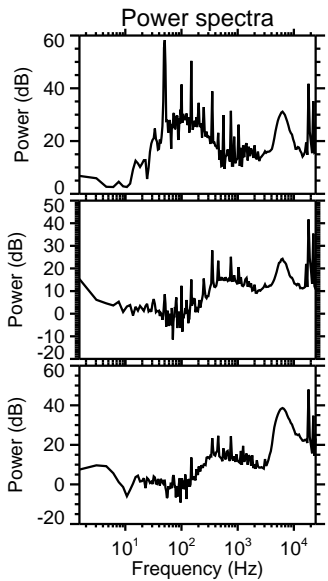
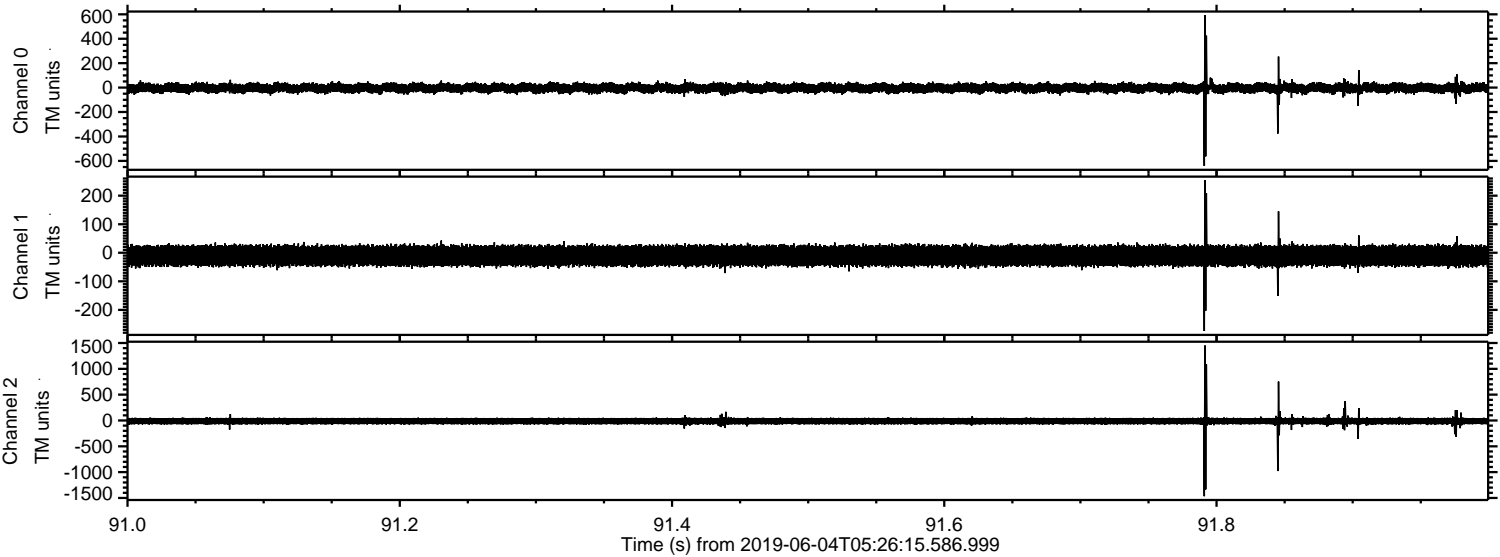
Processed Tue Jun 4 07:34:15 2019 by ELM ver.2012-10-06 from 001__elm20190604_052614__dat00.bin



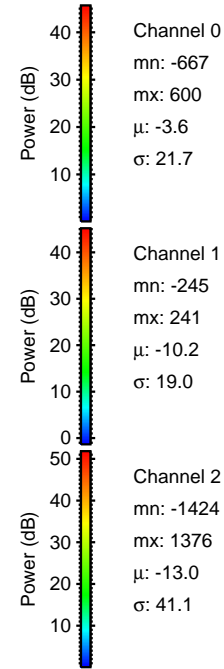
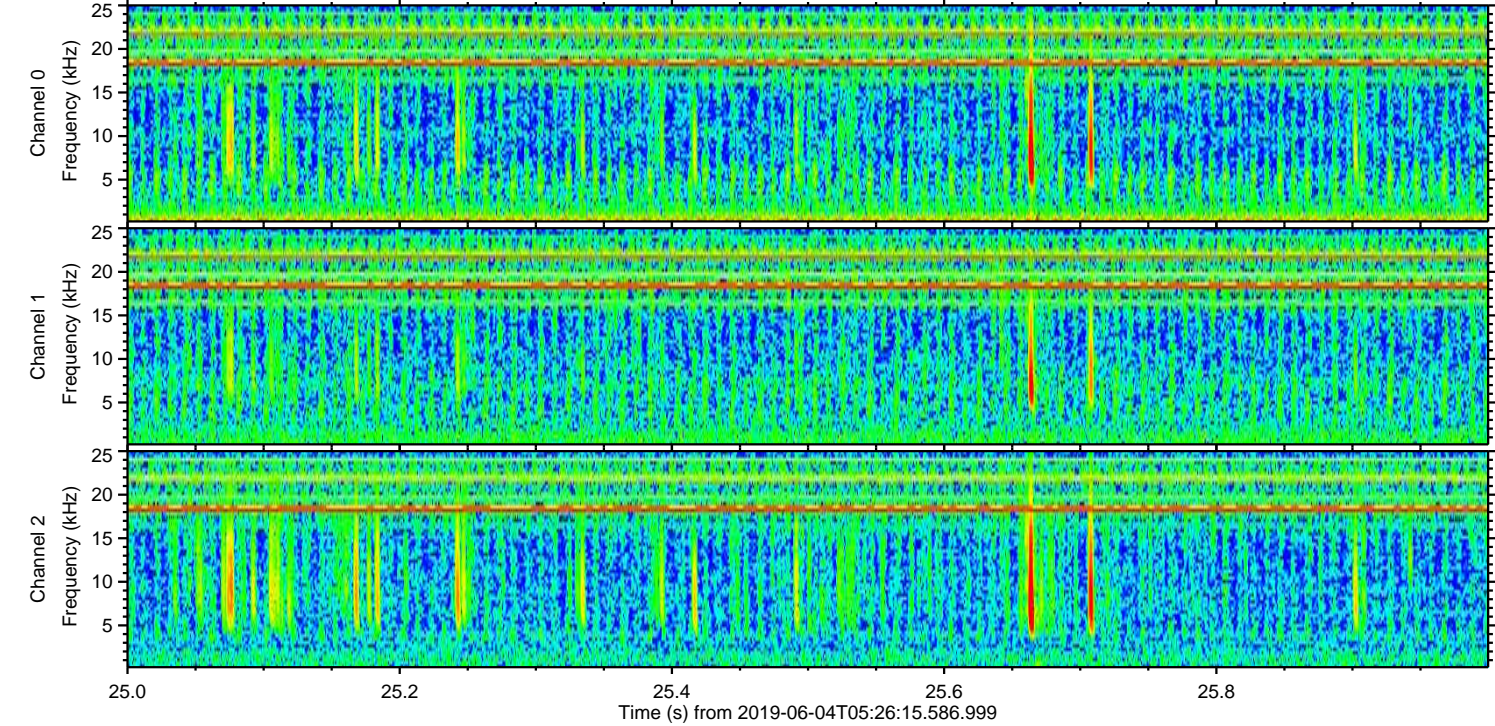
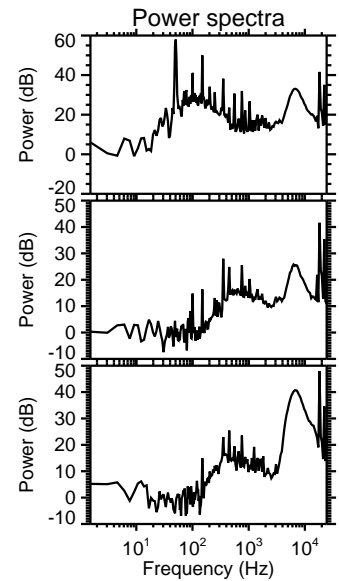
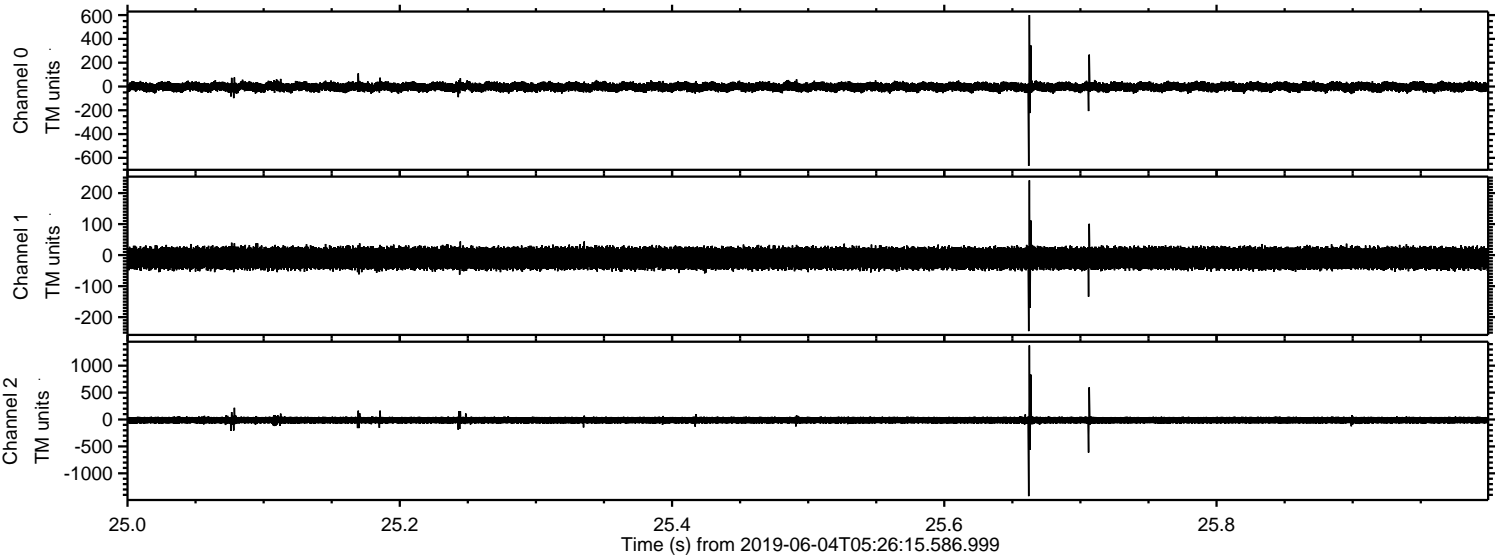
Processed Tue Jun 4 07:34:16 2019 by ELM ver.2012-10-06 from 001__elm20190604_052614__dat00.bin



Processed Tue Jun 4 07:34:16 2019 by ELM ver.2012-10-06 from 001__elm20190604_052614__dat00.bin



Processed Tue Jun 4 07:34:17 2019 by ELM ver.2012-10-06 from 001__elm20190604_052614__dat00.bin



Processed Tue Jun 4 07:34:17 2019 by ELM ver.2012-10-06 from 001__elm20190604_052614__dat00.bin

