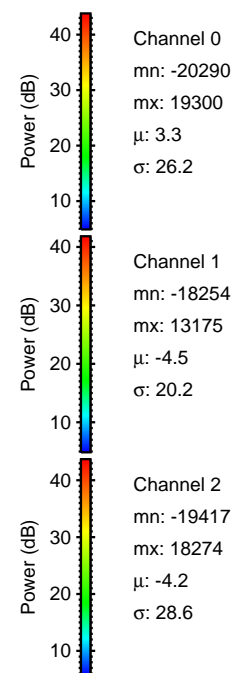
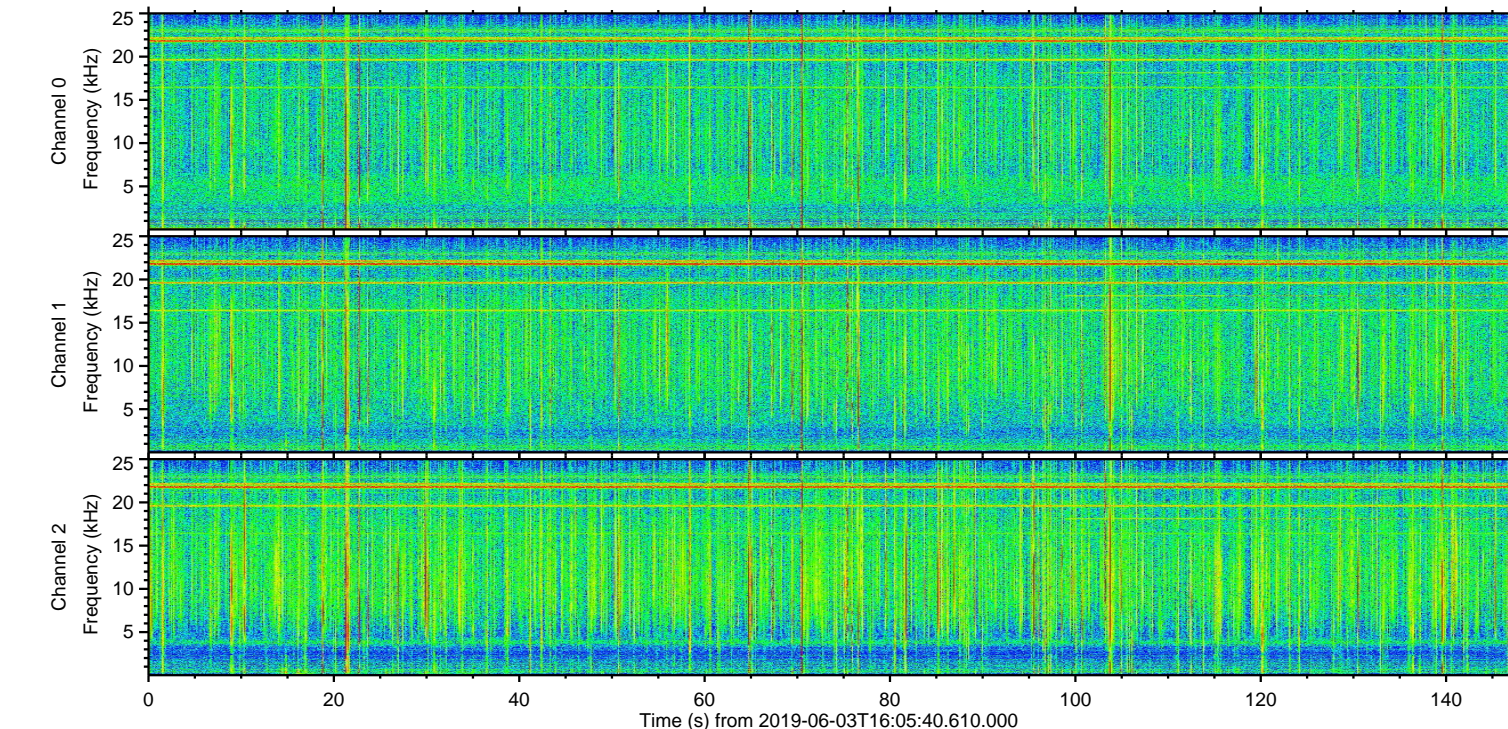
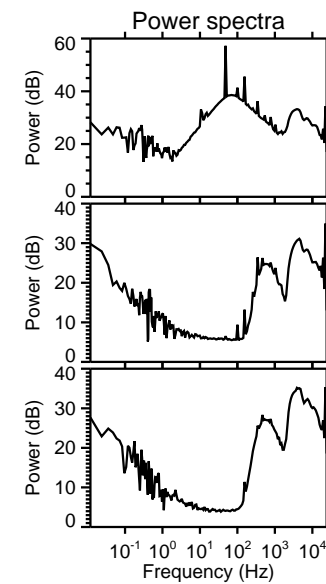
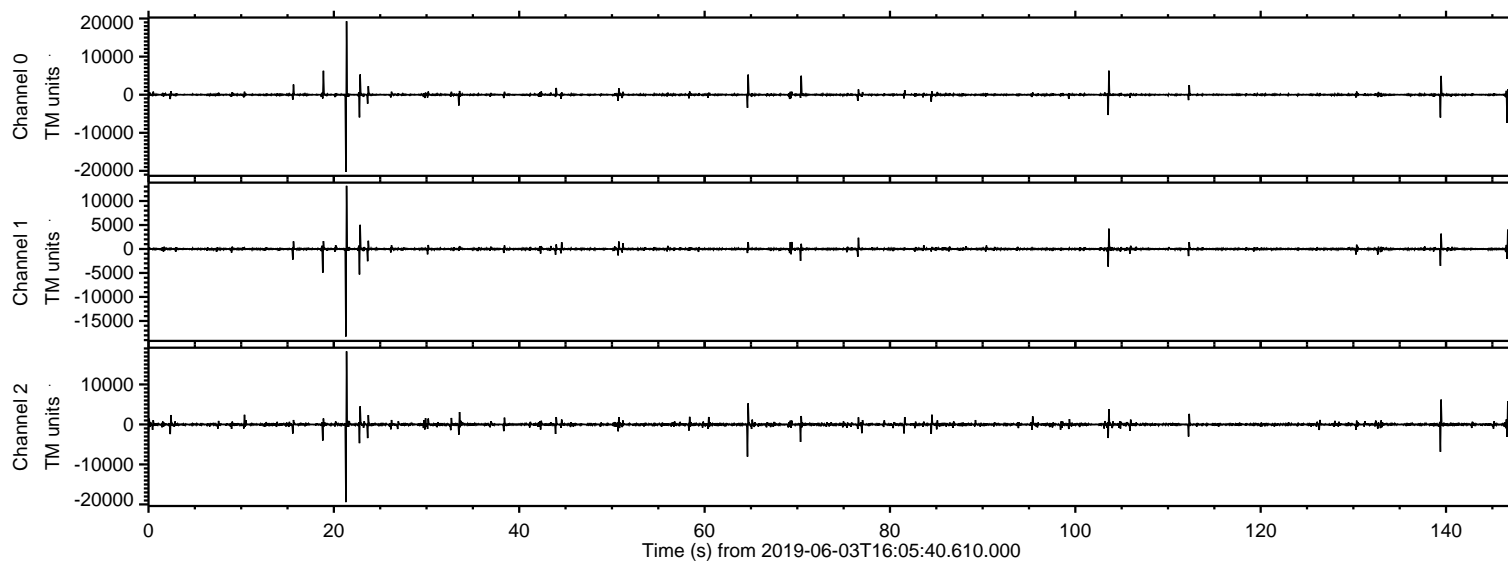
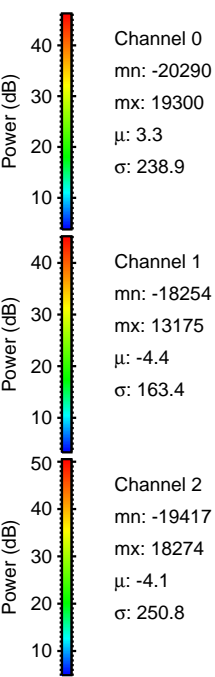
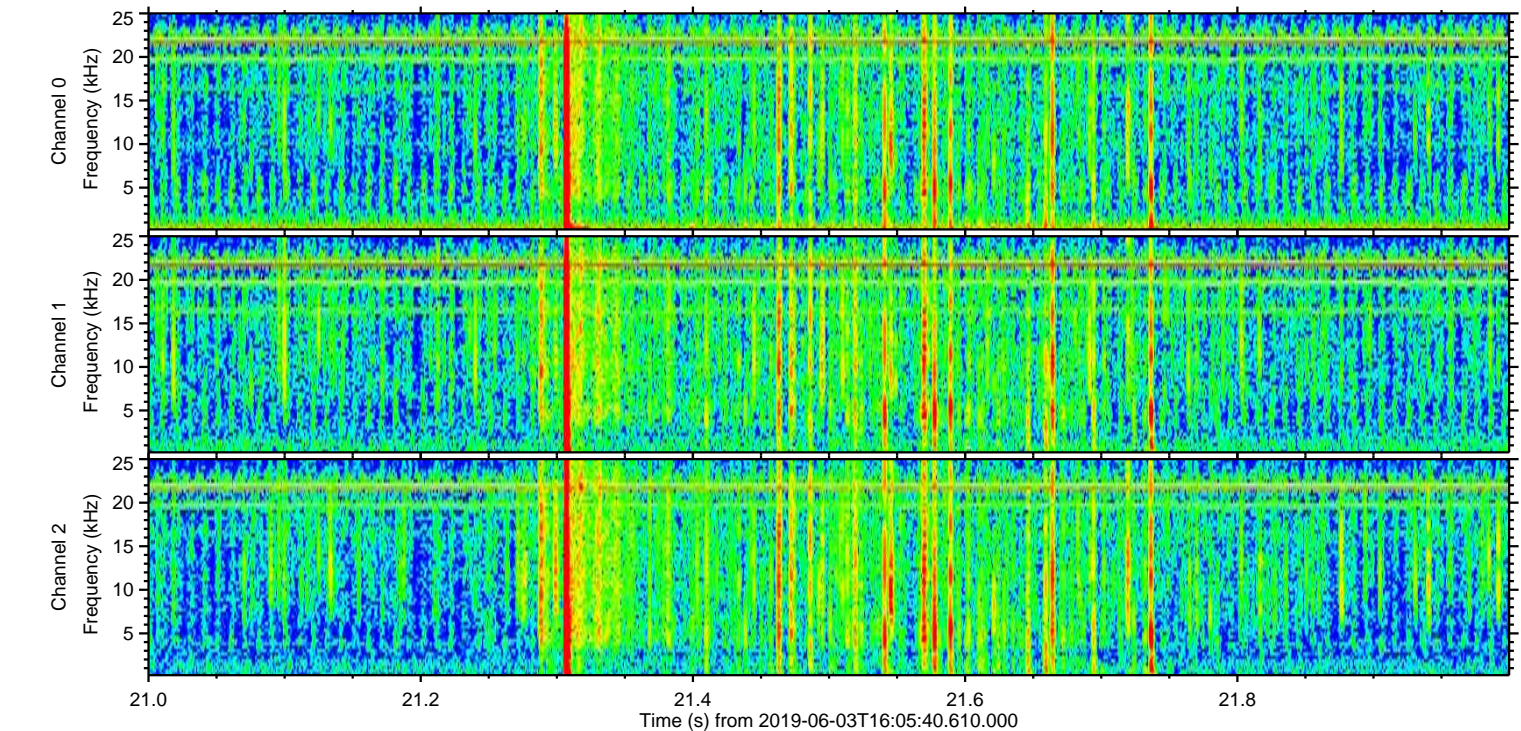
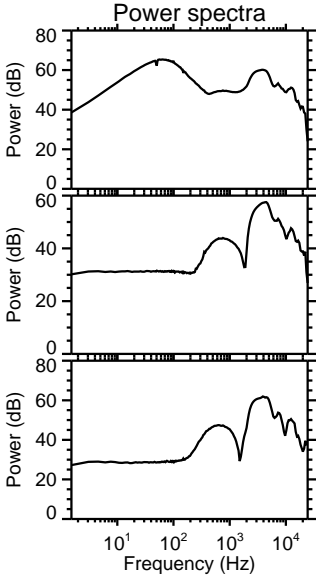
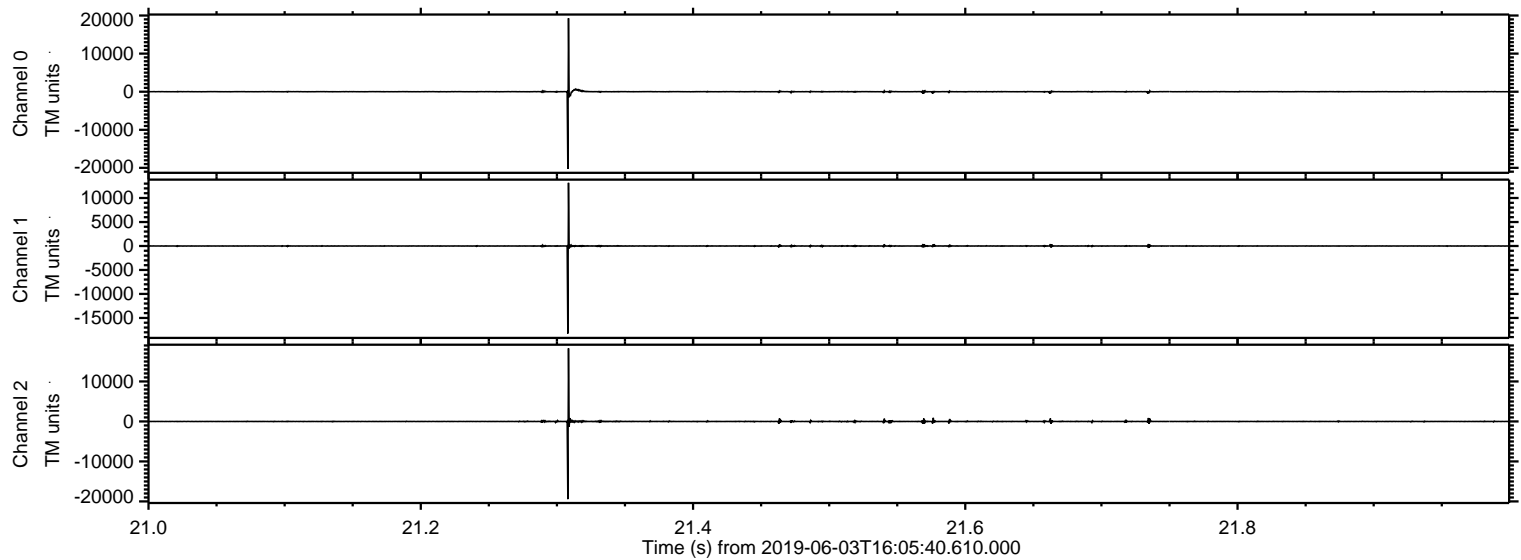


ELMAVAN 3D WAVEFORMS (Measured data sampled at 50 kHz) 51000 packets of 144 samples from 2019-06-03T16:05:40.610.000.

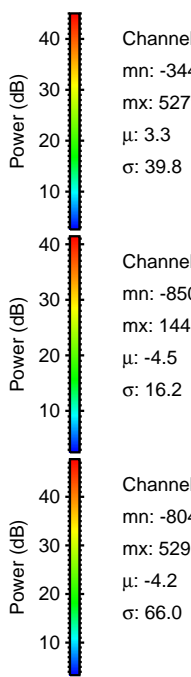
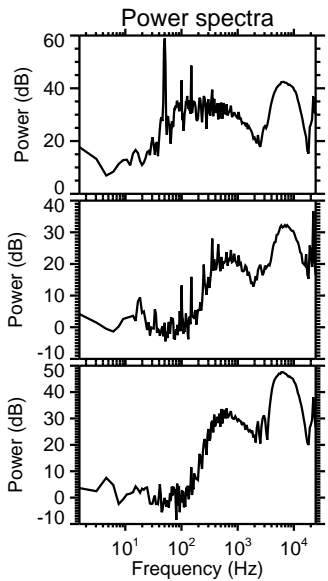
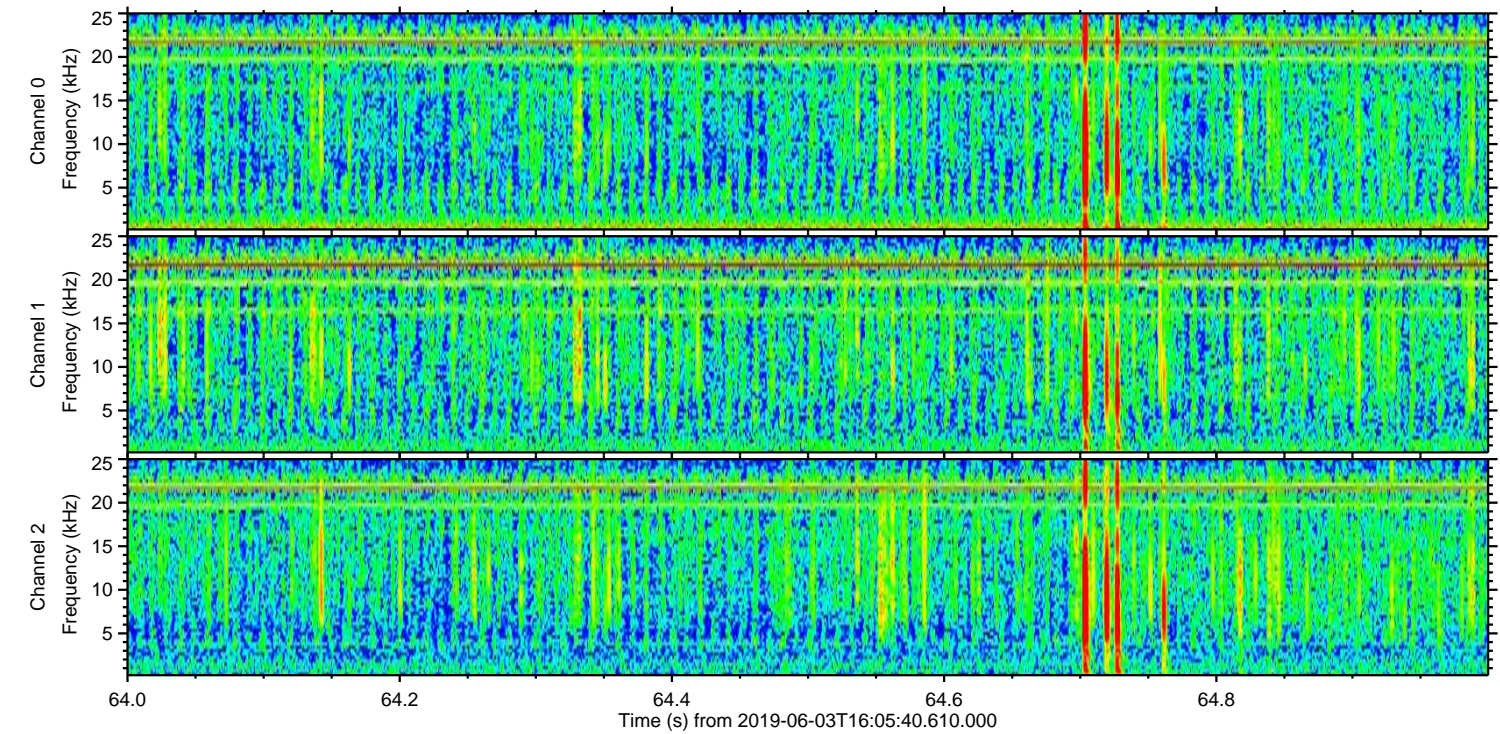
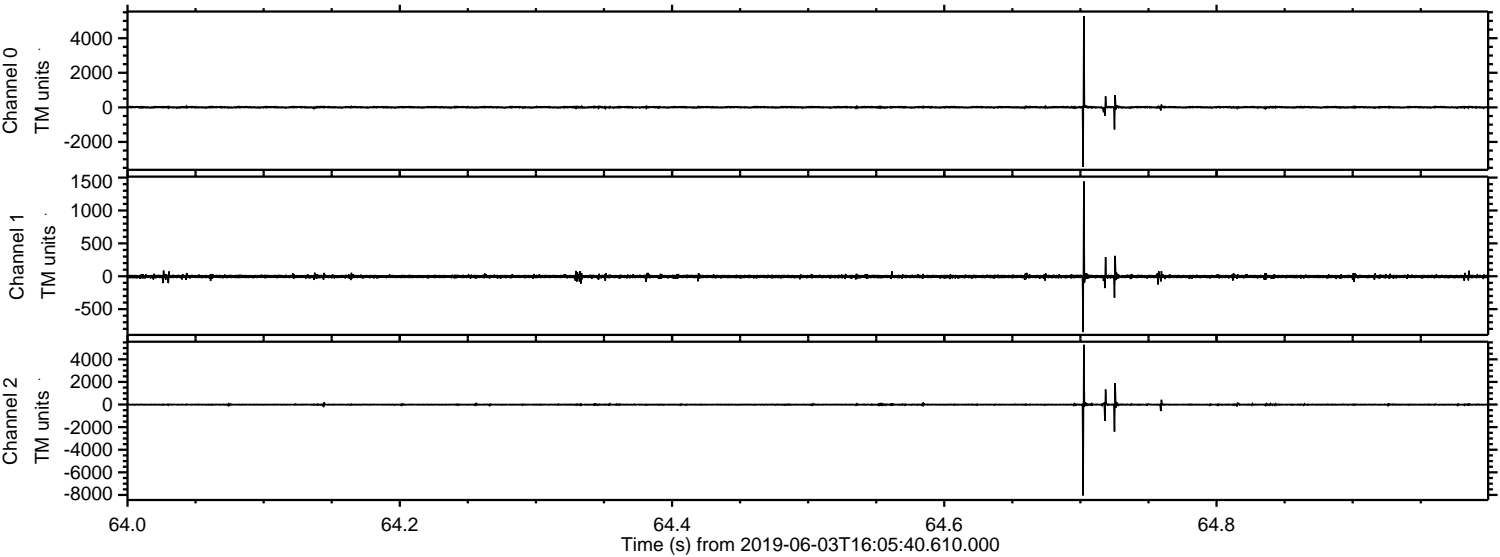
Processed Mon Jun 3 18:13:27 2019 by ELM ver.2012-10-06 from 001__elm20190603_160539__dat00.bin



Processed Mon Jun 3 18:13:33 2019 by ELM ver.2012-10-06 from 001__elm20190603_160539__dat00.bin



Processed Mon Jun 3 18:13:34 2019 by ELM ver.2012-10-06 from 001__elm20190603_160539__dat00.bin



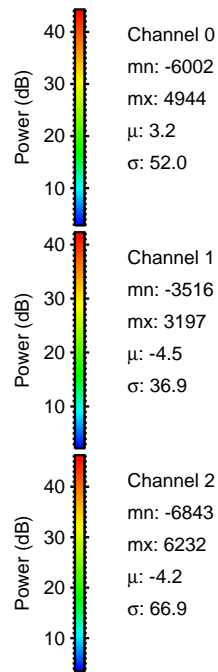
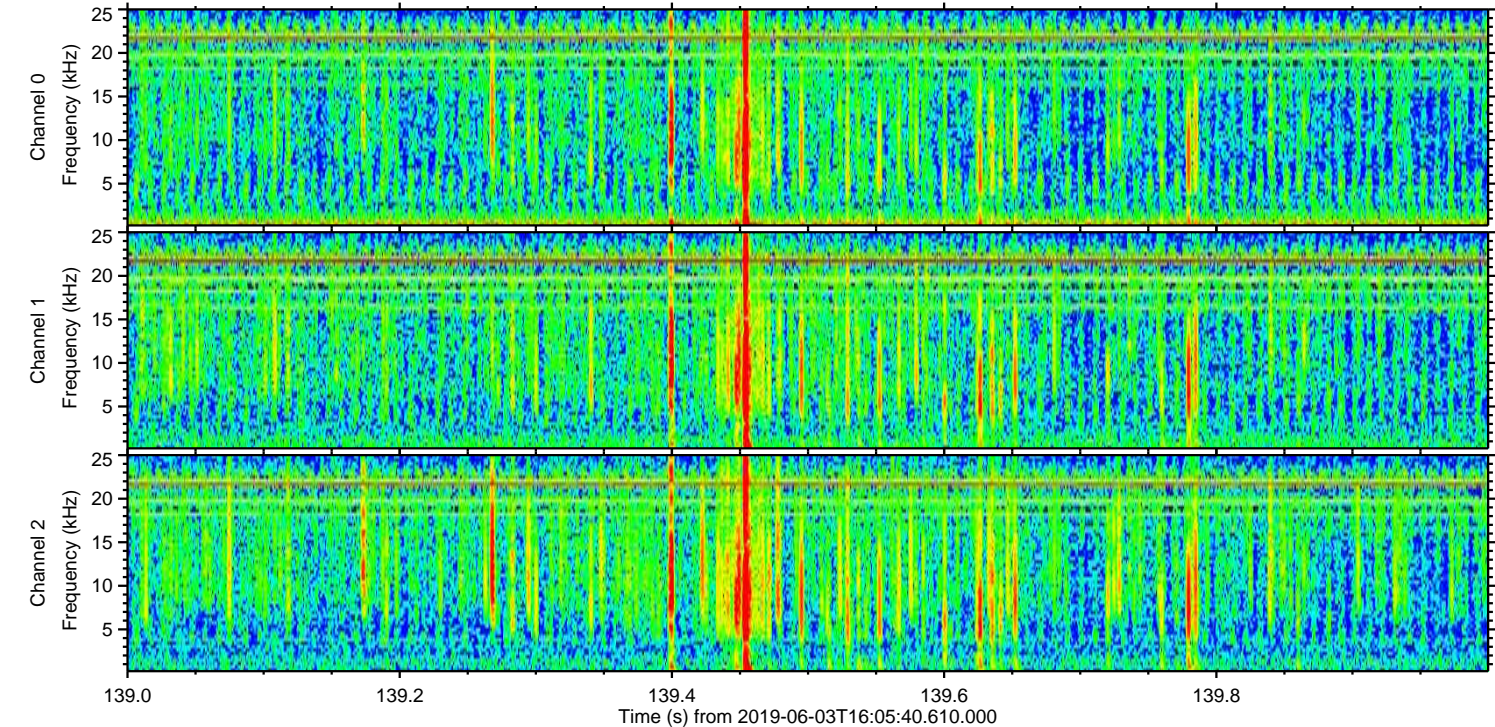
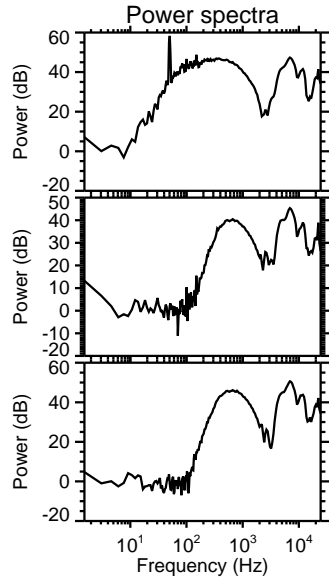
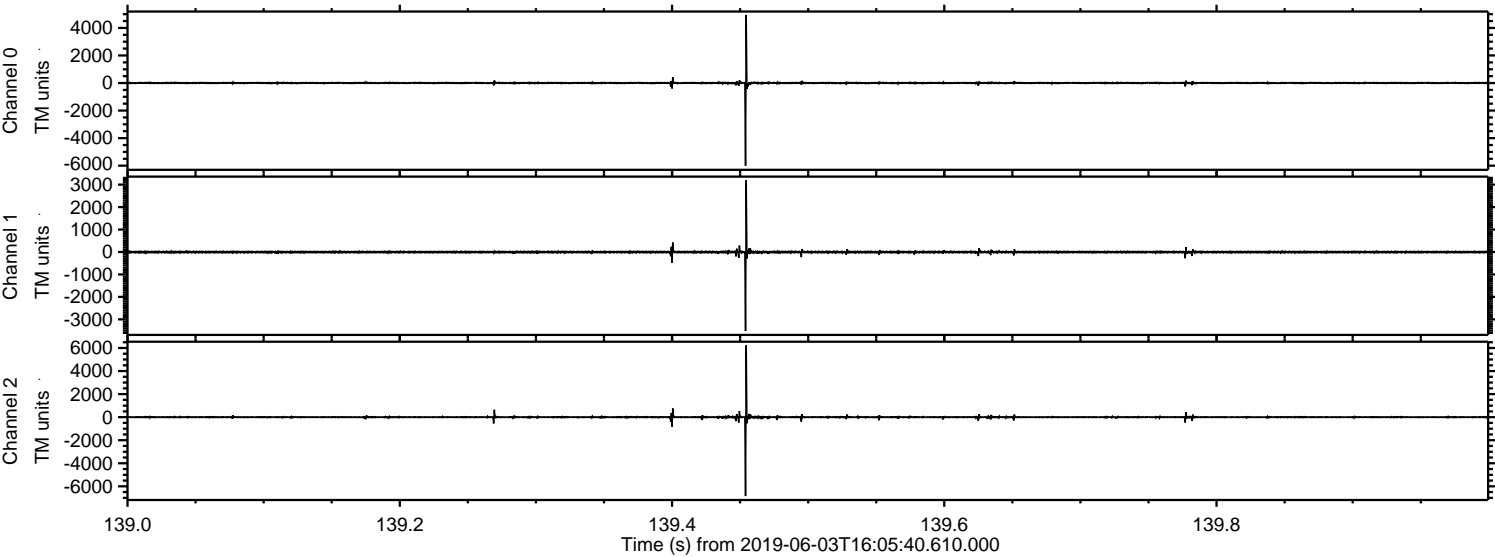
Channel 0
mn: -3441
mx: 5279
 μ : 3.3
 σ : 39.8

Channel 1
mn: -850
mx: 1443
 μ : -4.5
 σ : 16.2

Channel 2
mn: -8043
mx: 5296
 μ : -4.2
 σ : 66.0

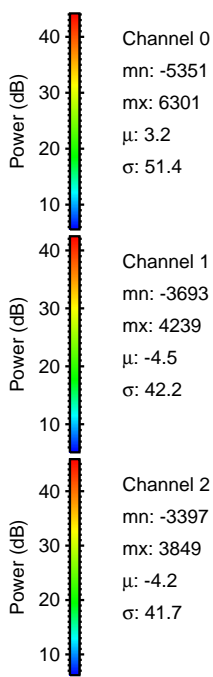
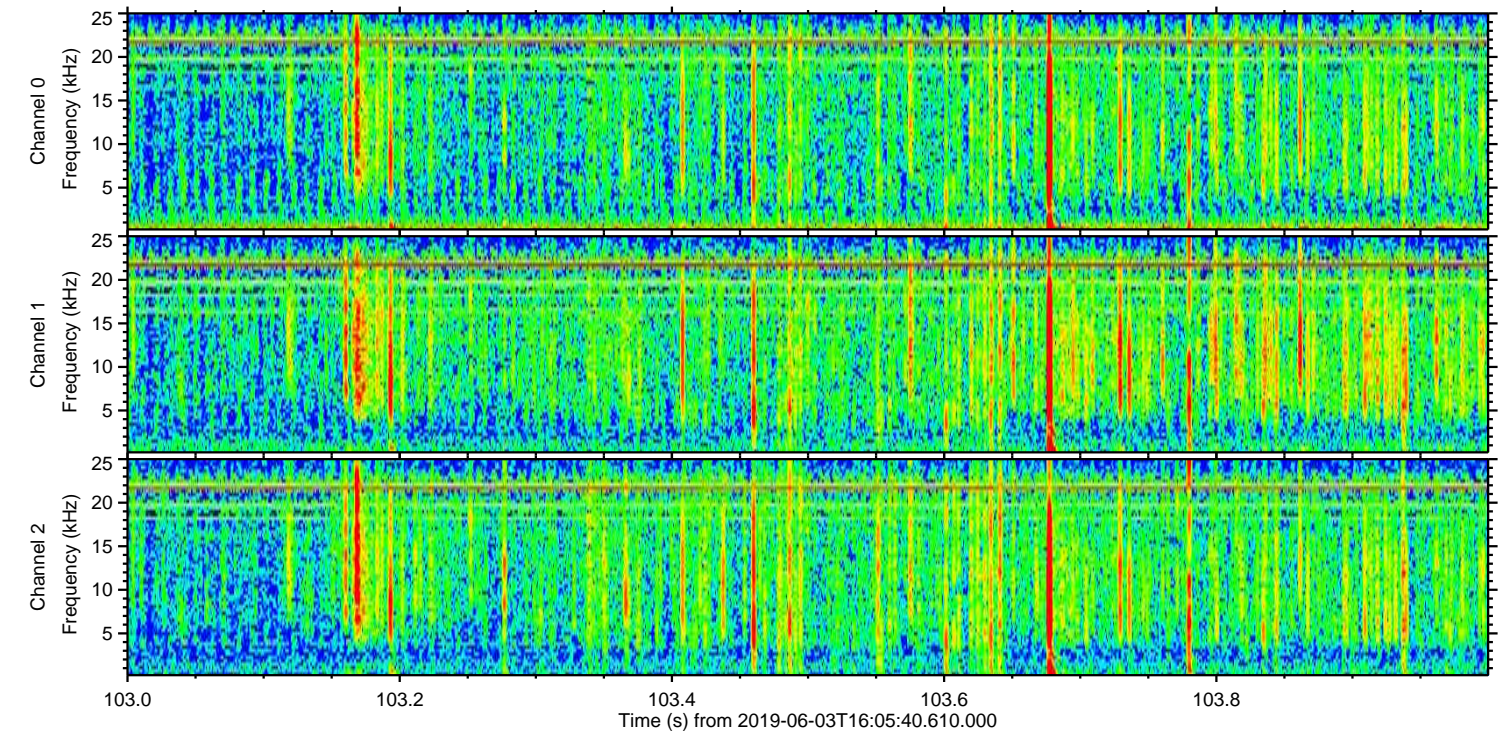
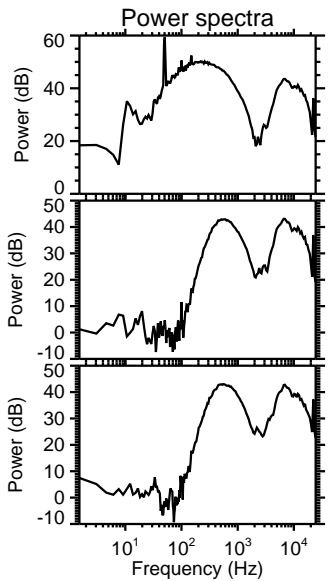
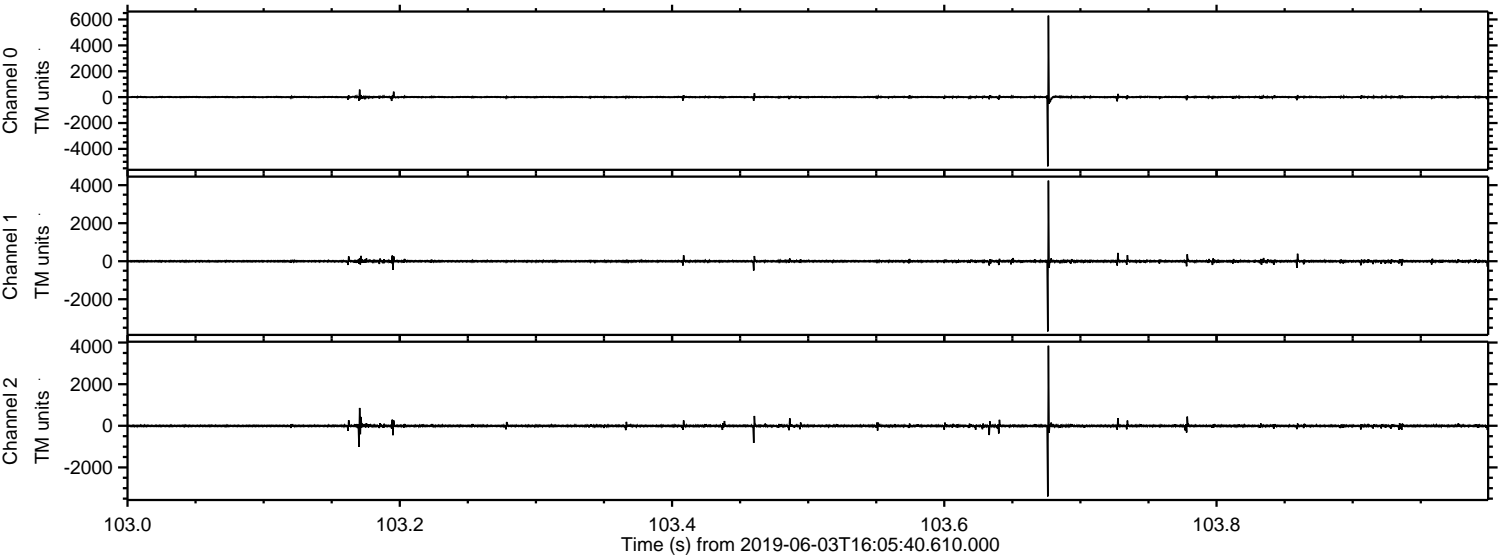
ELMAVAN 3D WAVEFORMS (Measured data sampled at 50 kHz) 51000 packets of 144 samples from 2019-06-03T16:05:40.610.000. Part 140/147

Processed Mon Jun 3 18:13:34 2019 by ELM ver.2012-10-06 from 001__elm20190603_160539__dat00.bin



ELMAVAN 3D WAVEFORMS (Measured data sampled at 50 kHz) 51000 packets of 144 samples from 2019-06-03T16:05:40.610.000. Part 104/147

Processed Mon Jun '3 18:13:35 2019 by ELM ver.2012-10-06 from 001__elm20190603_160539__dat00.bin

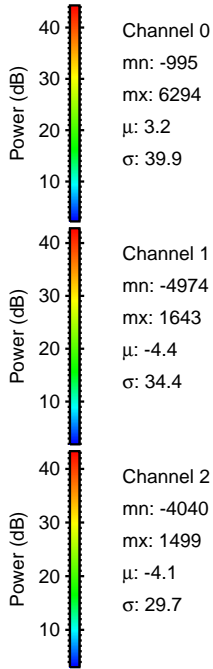
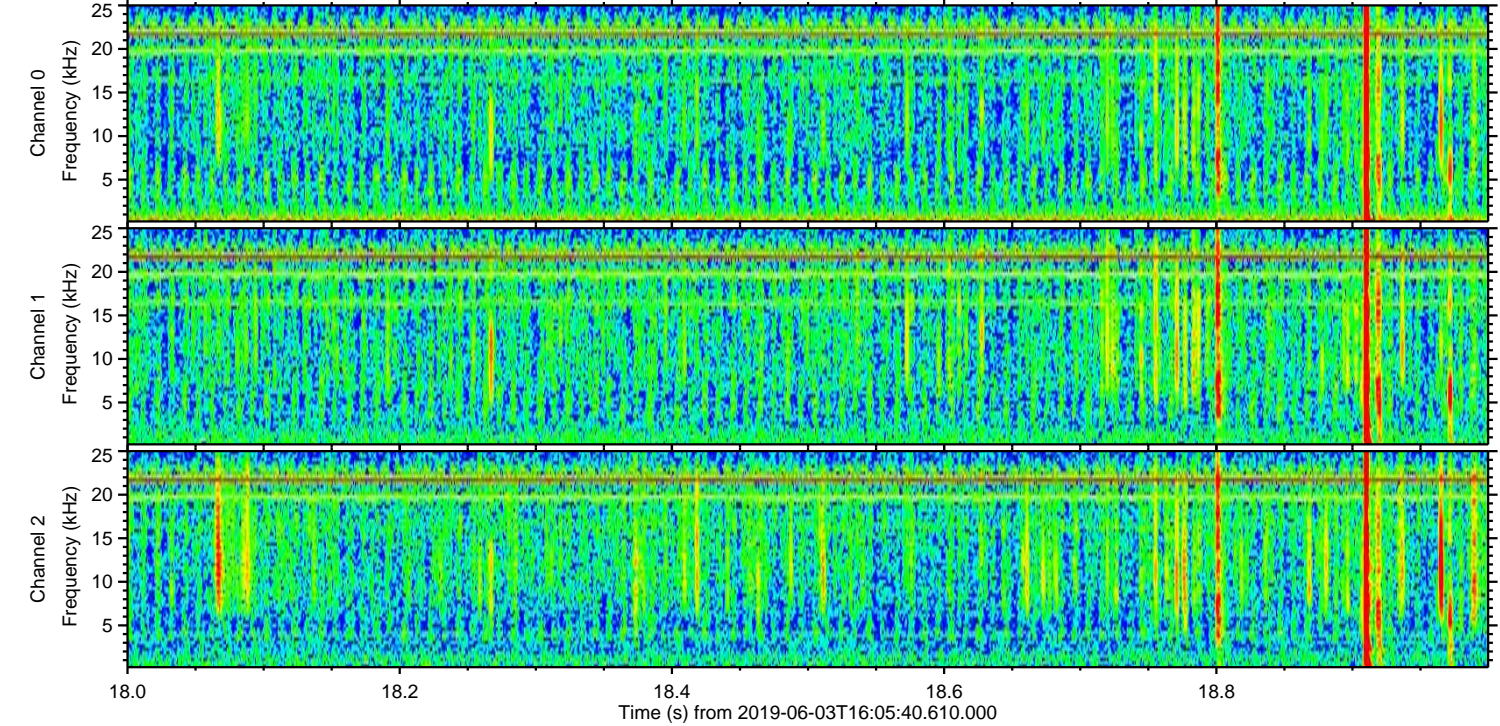
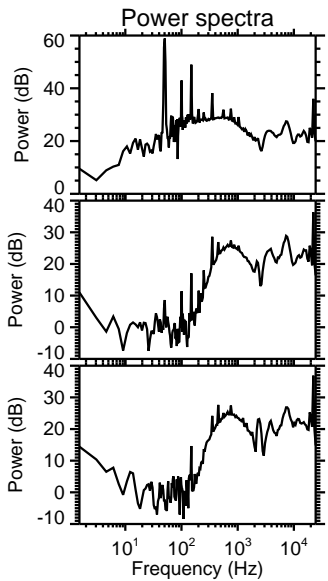
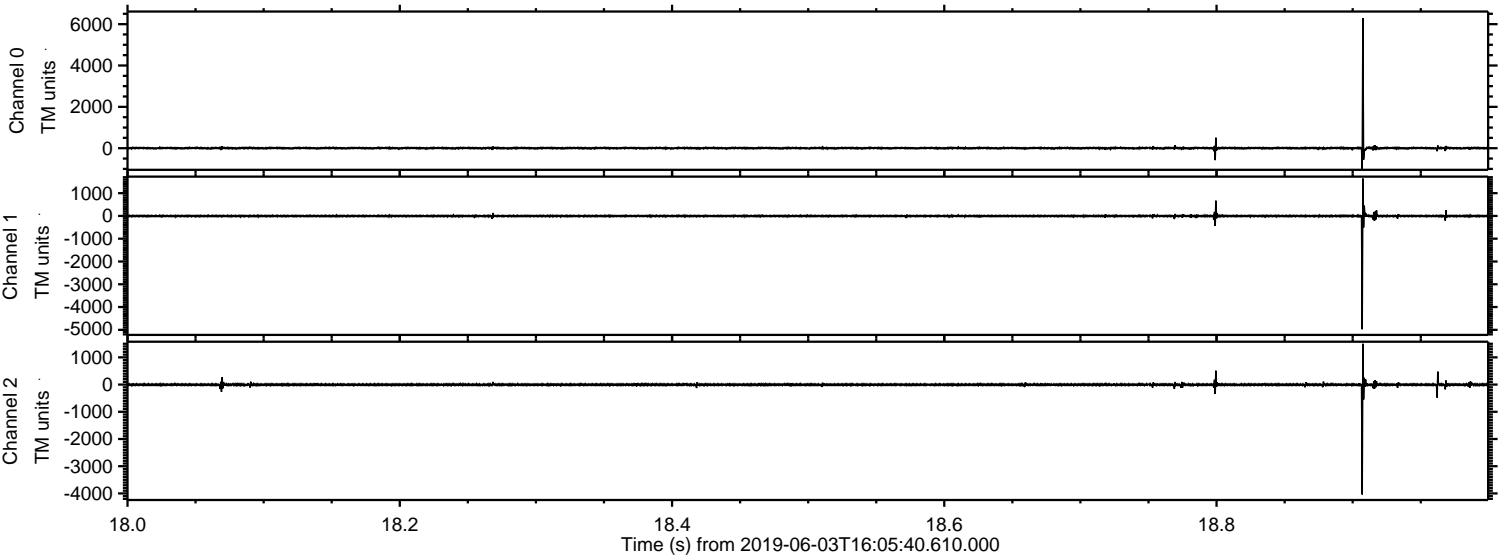


Channel 0
mn: -5351
mx: 6301
 μ : 3.2
 σ : 51.4

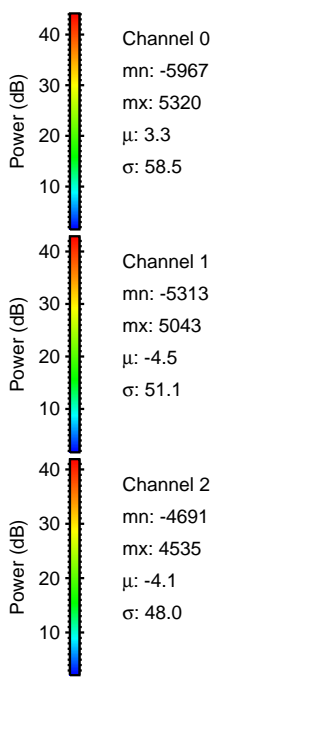
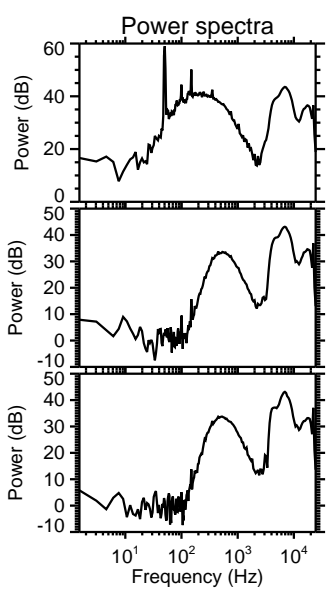
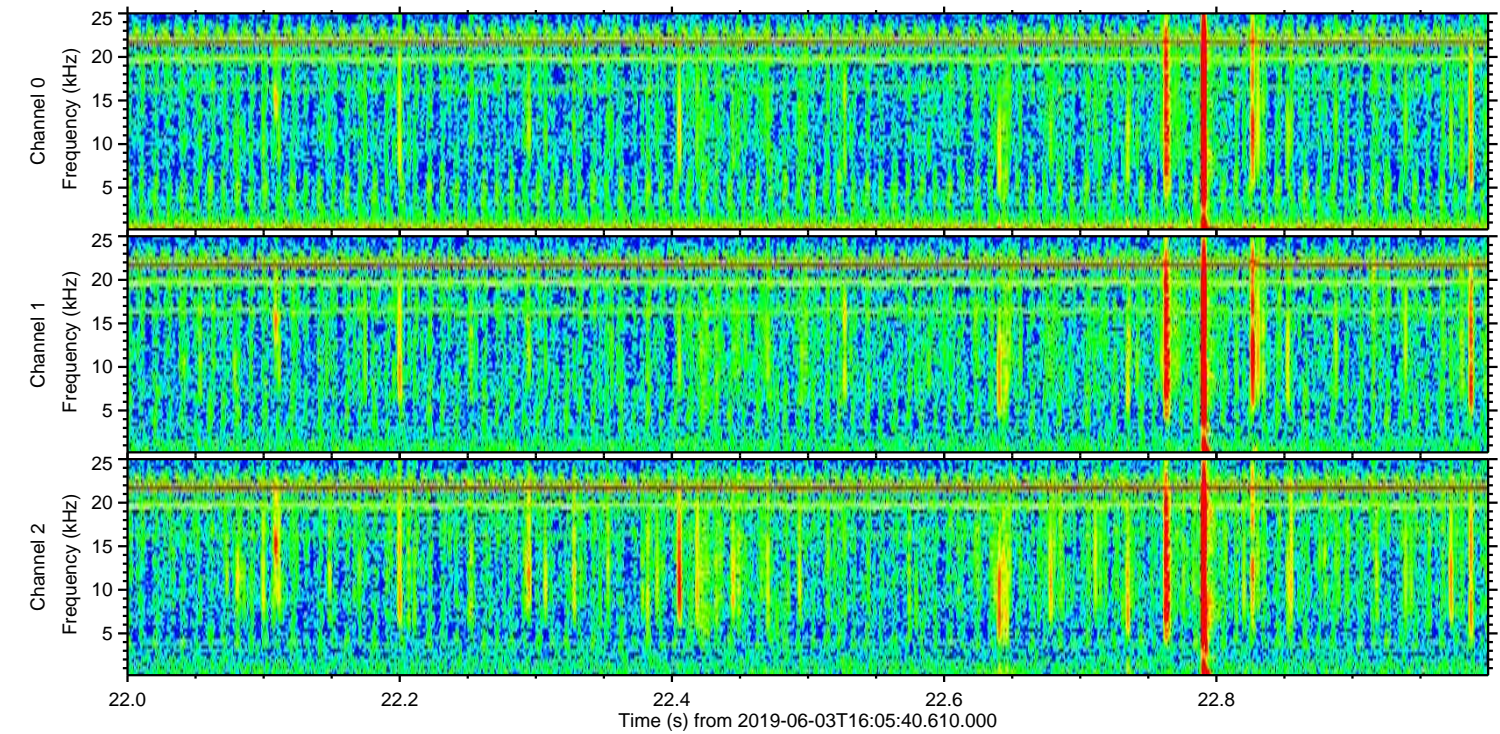
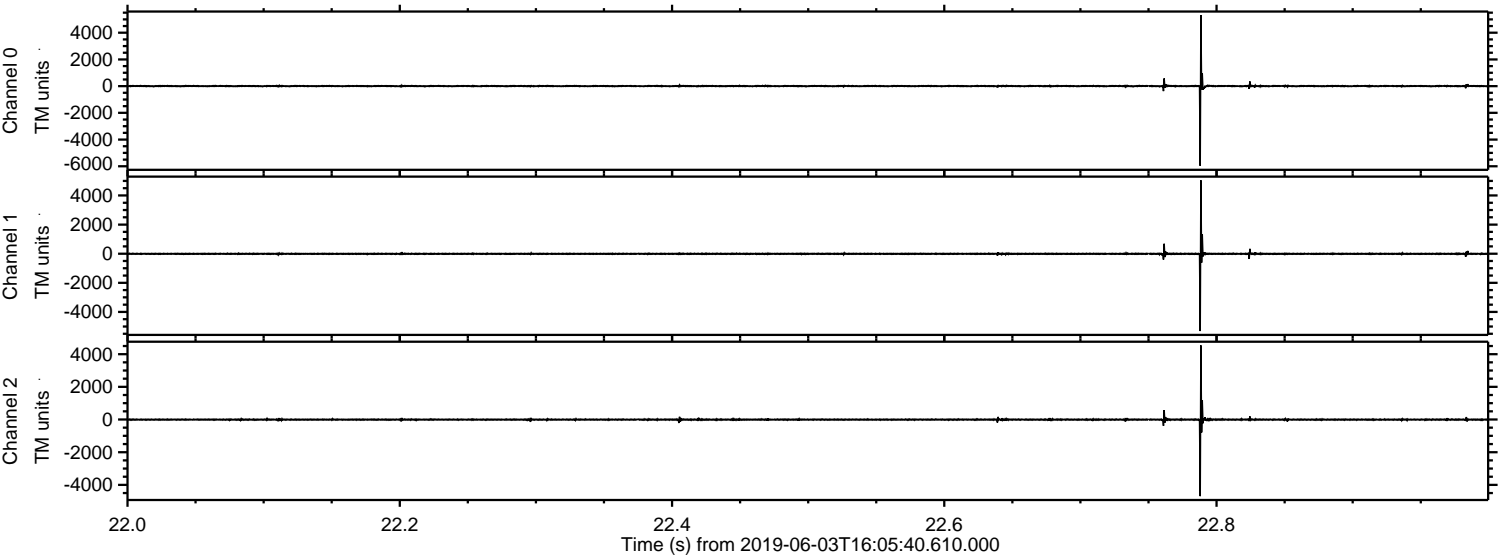
Channel 1
mn: -3693
mx: 4239
 μ : -4.5
 σ : 42.2

Channel 2
mn: -3397
mx: 3849
 μ : -4.2
 σ : 41.7

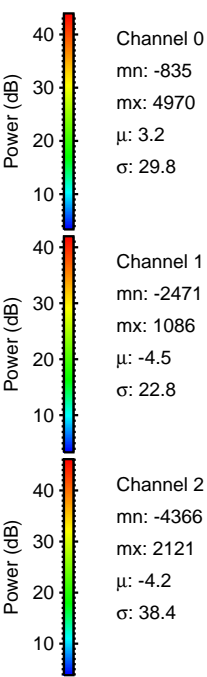
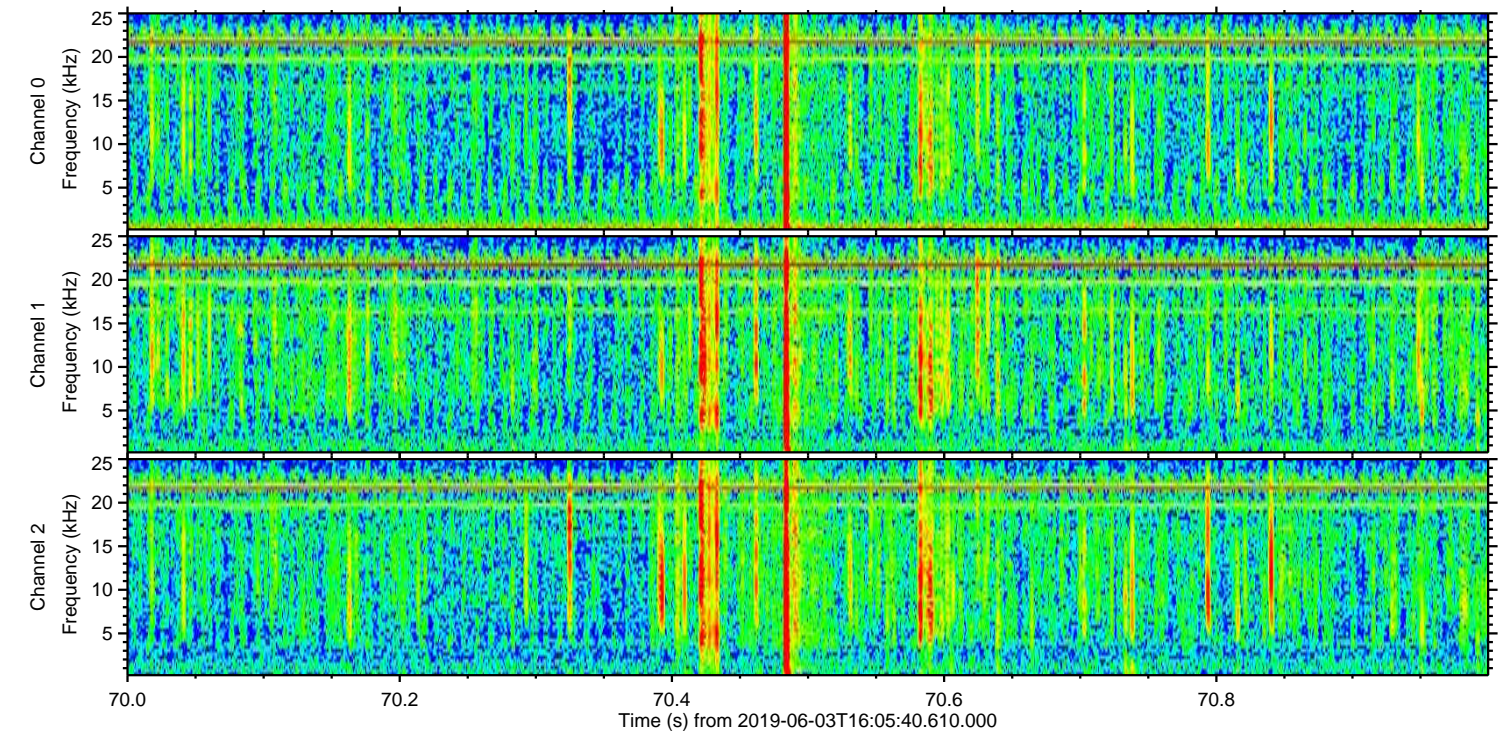
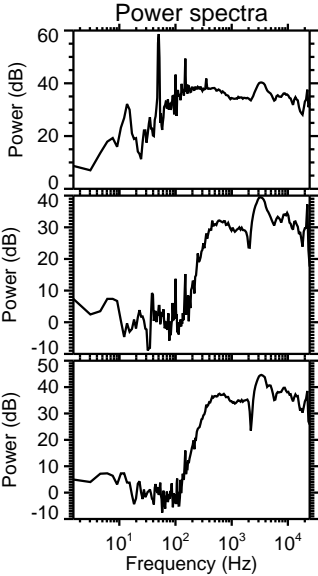
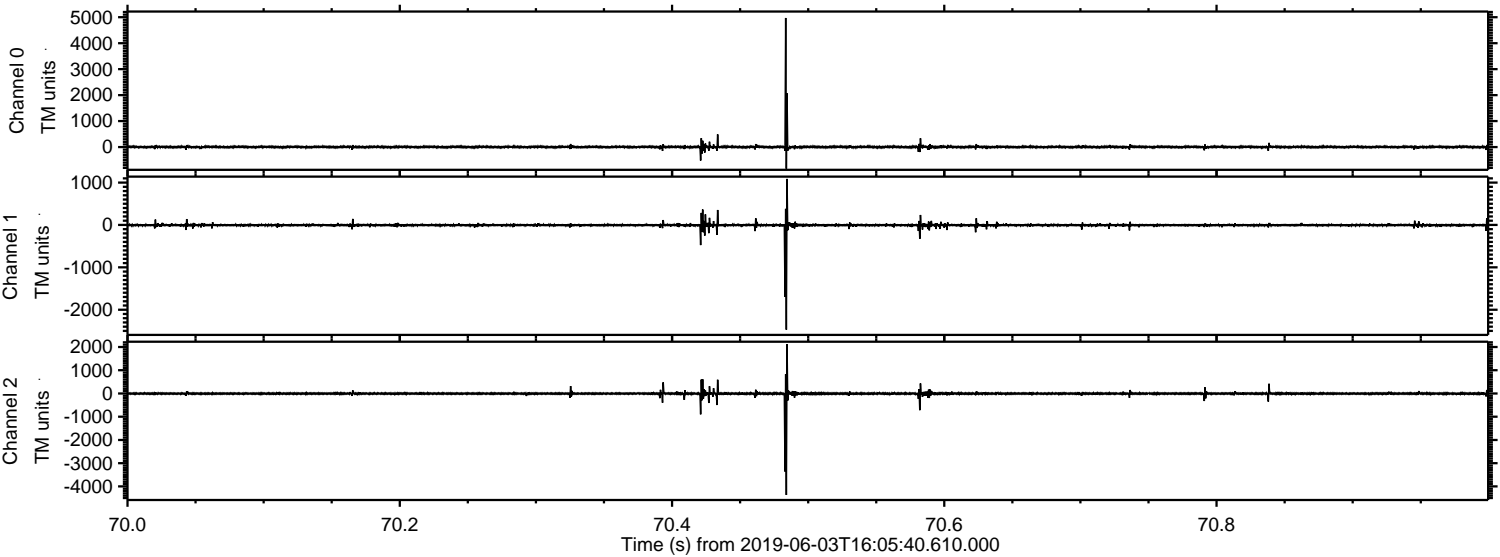
Processed Mon Jun 3 18:13:35 2019 by ELM ver.2012-10-06 from 001__elm20190603_160539__dat00.bin



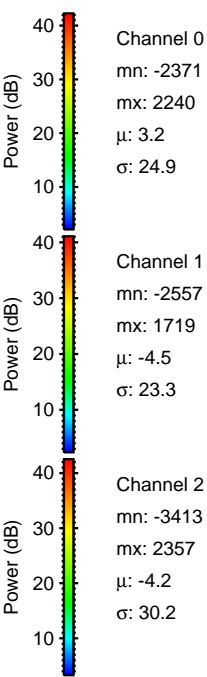
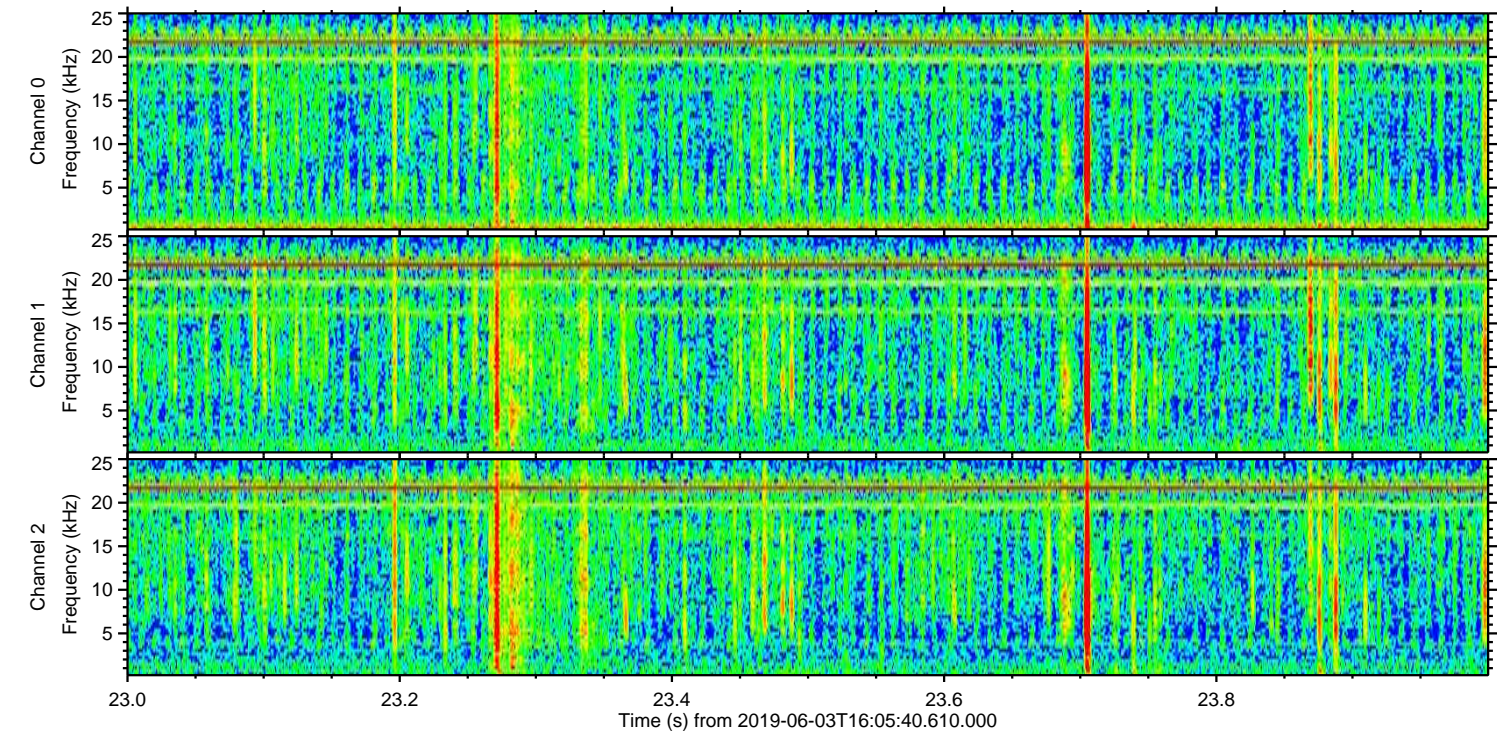
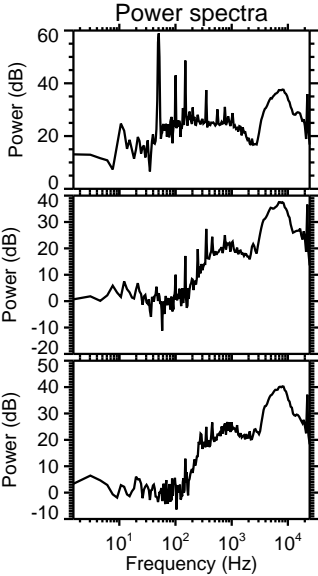
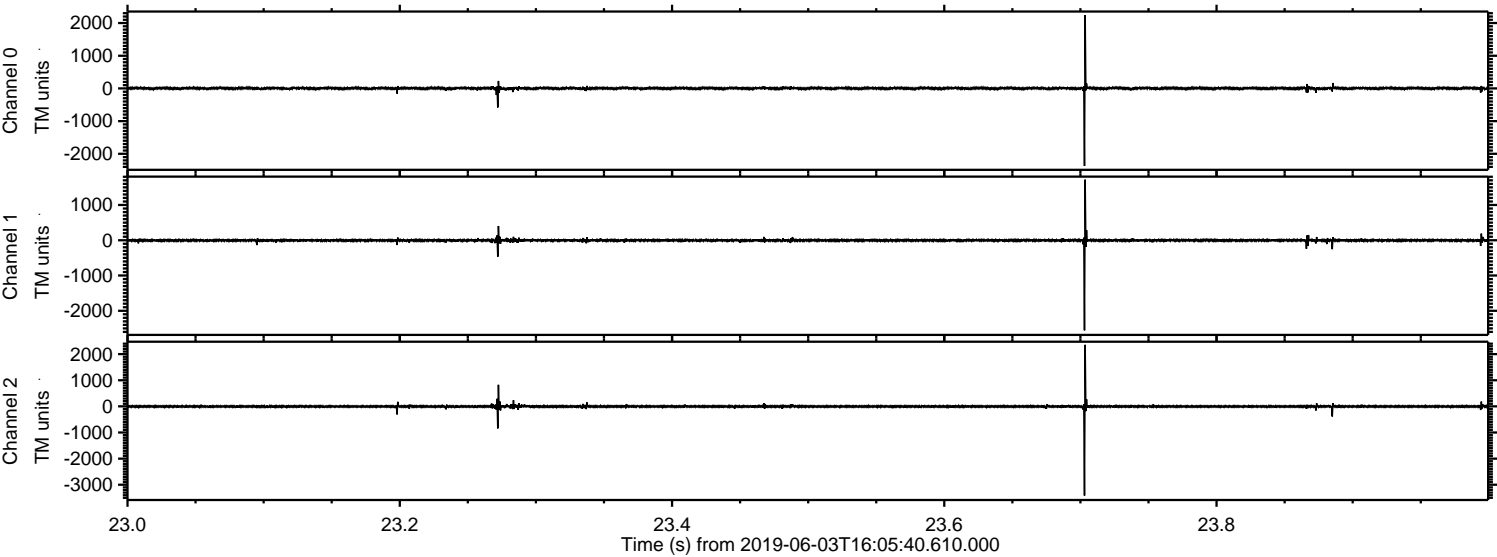
Processed Mon Jun '3 18:13:36 2019 by ELM ver.2012-10-06 from 001__elm20190603_160539__dat00.bin



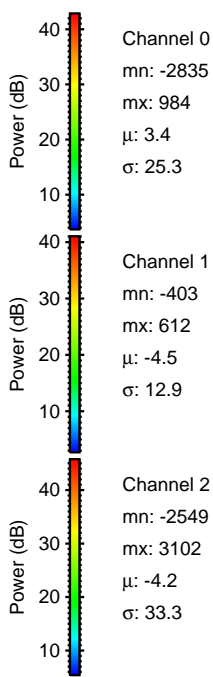
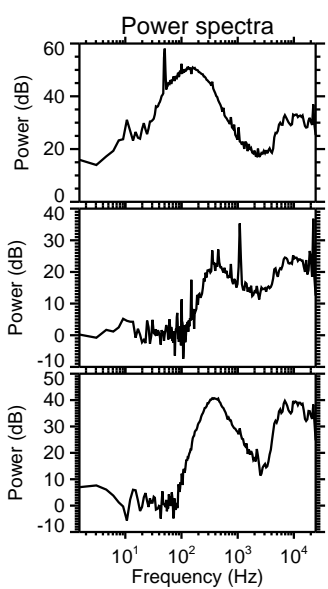
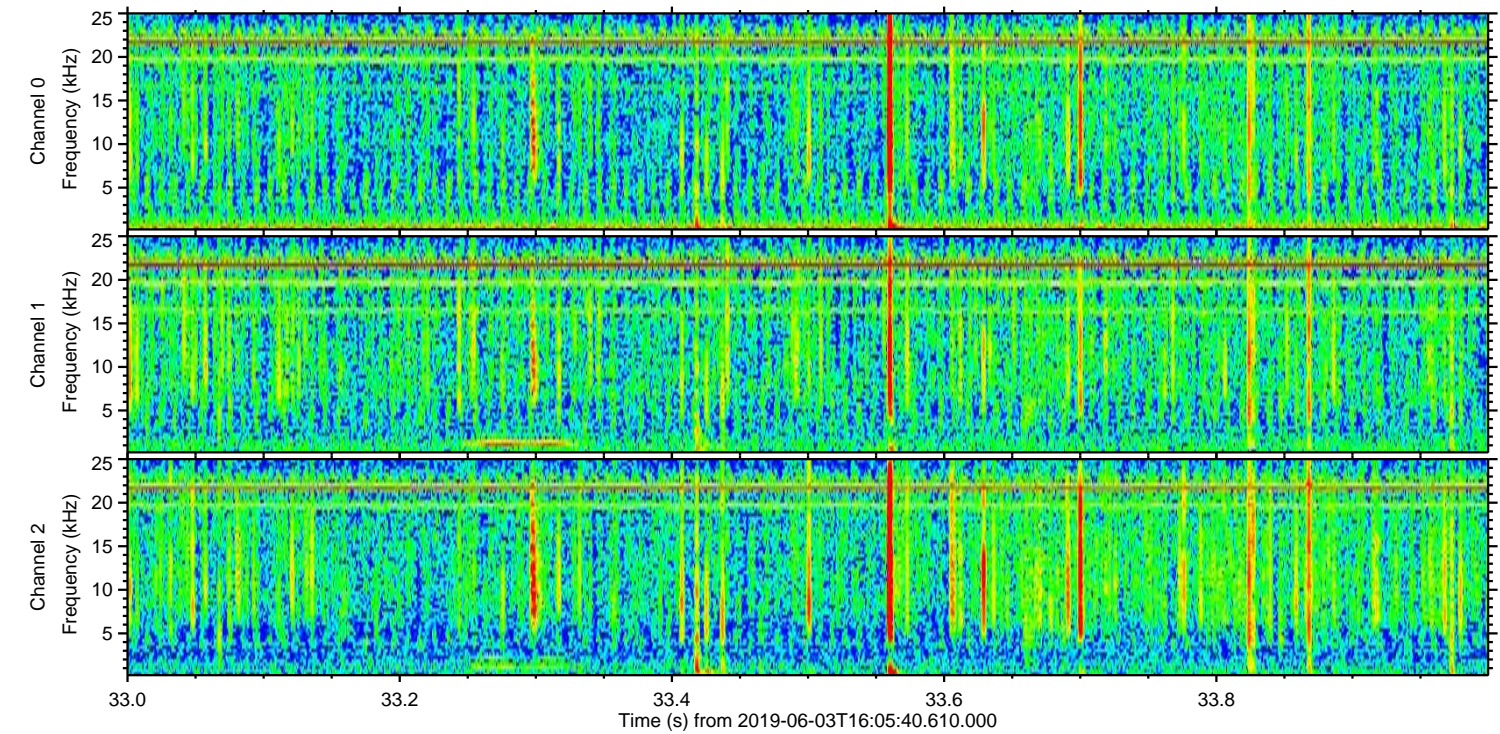
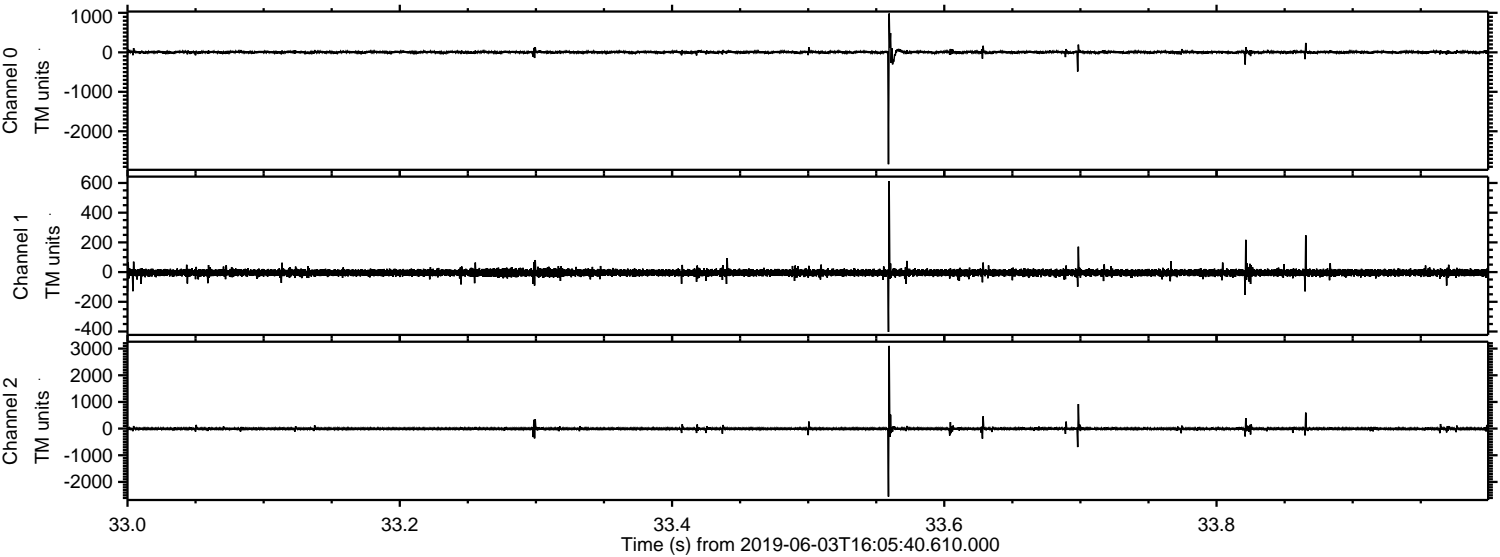
Processed Mon Jun 3 18:13:37 2019 by ELM ver.2012-10-06 from 001__elm20190603_160539__dat00.bin



Processed Mon Jun 3 18:13:37 2019 by ELM ver.2012-10-06 from 001__elm20190603_160539__dat00.bin



Processed Mon Jun 3 18:13:38 2019 by ELM ver.2012-10-06 from 001__elm20190603_160539__dat00.bin



Processed Mon Jun 3 18:13:39 2019 by ELM ver.2012-10-06 from 001__elm20190603_160539__dat00.bin

