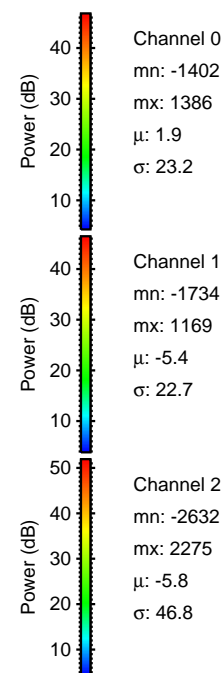
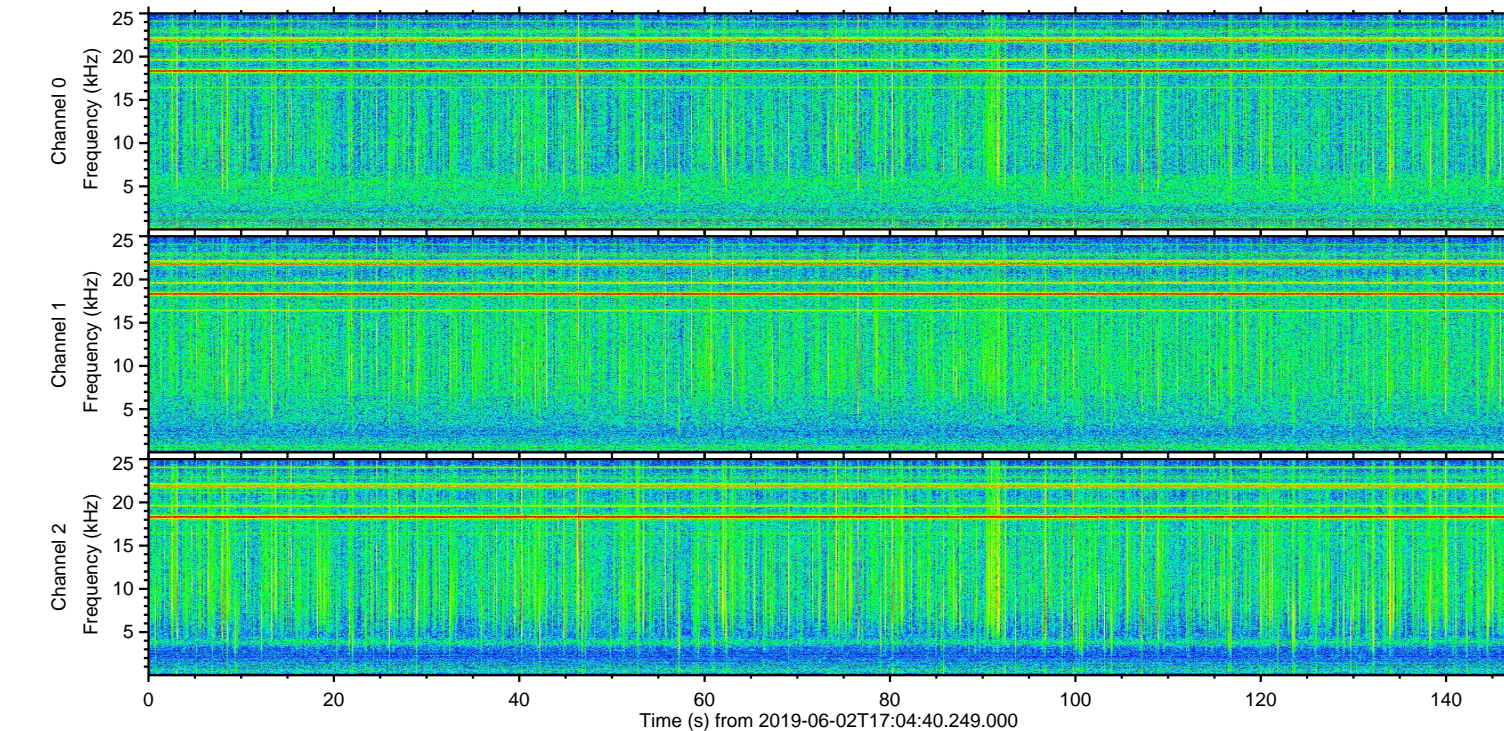
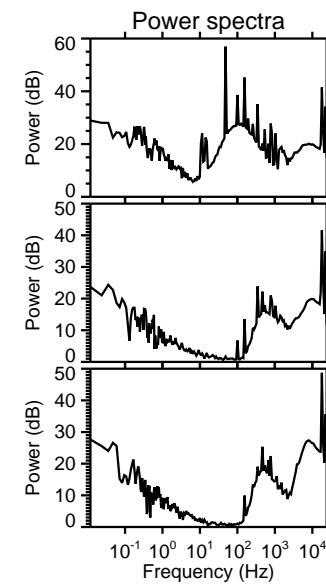
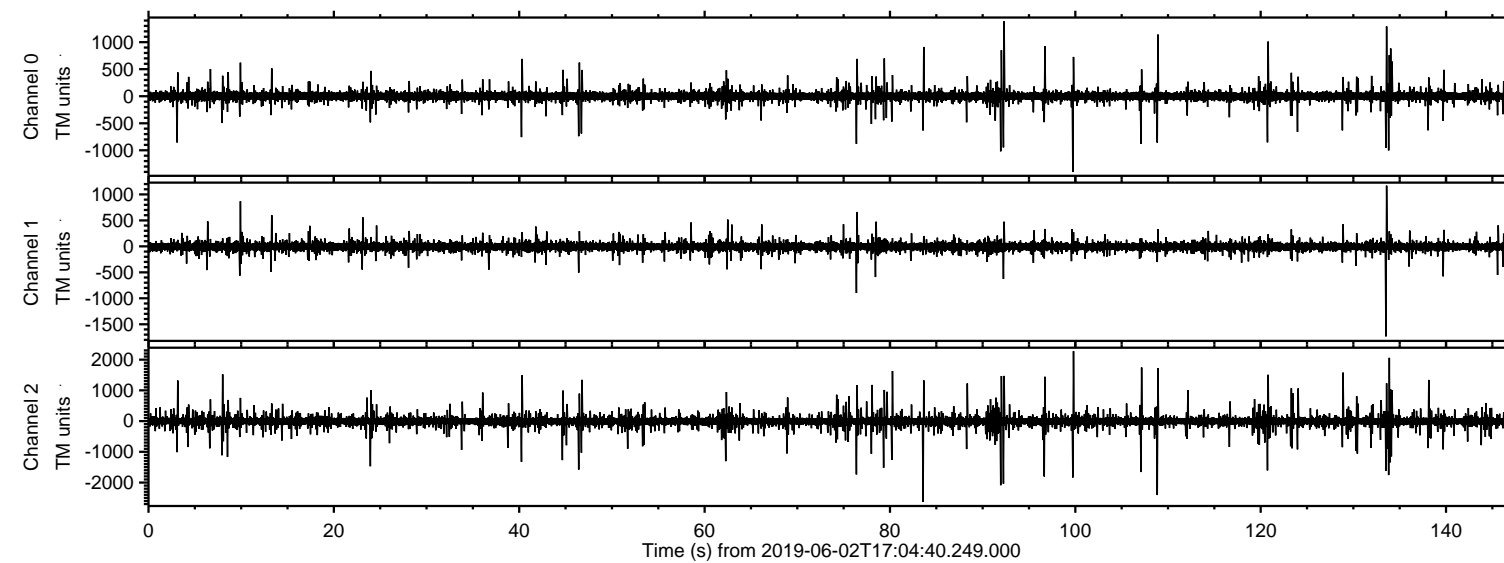
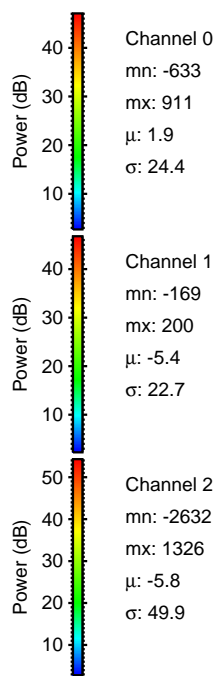
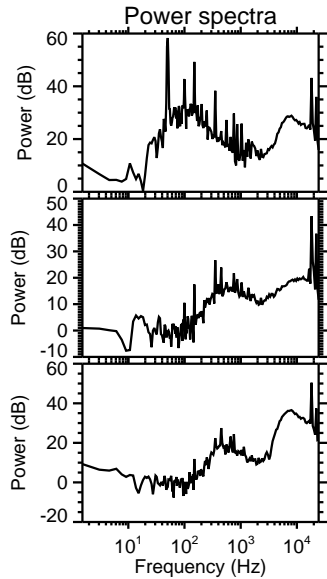
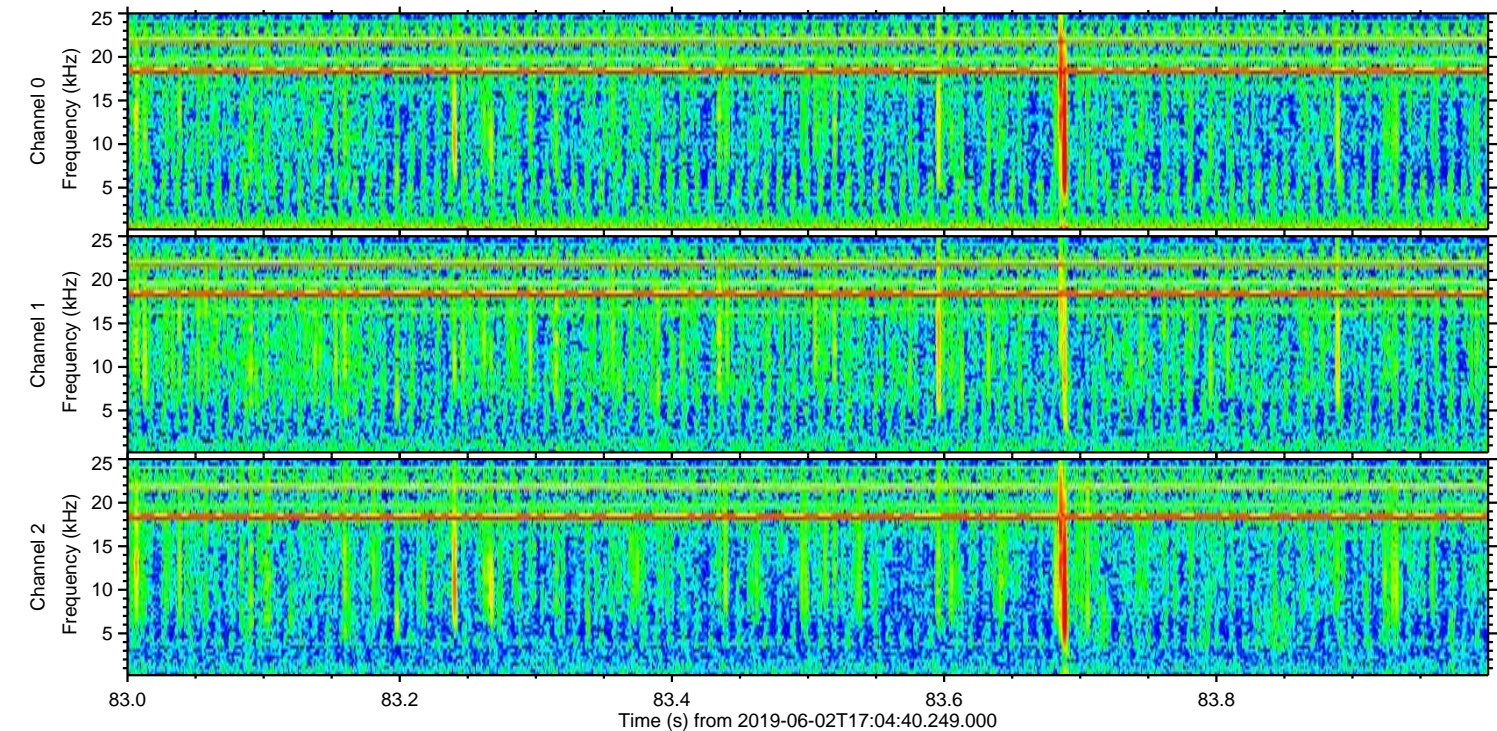
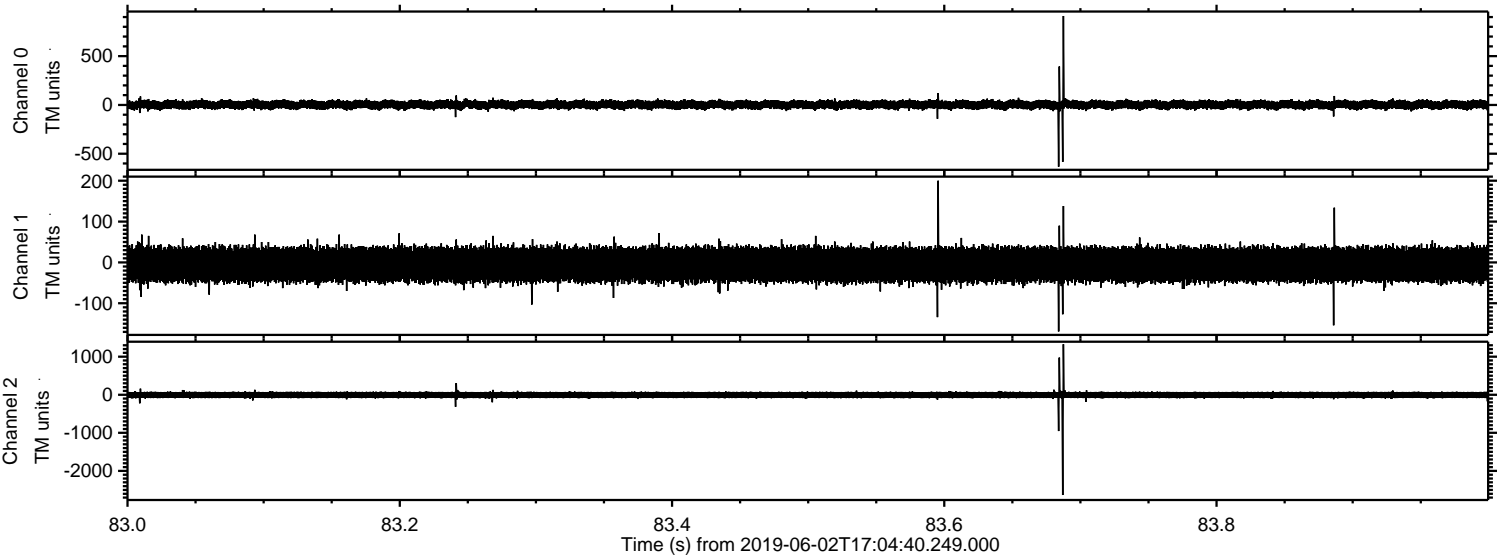


ELMAVAN 3D WAVEFORMS (Measured data sampled at 50 kHz) 51000 packets of 144 samples from 2019-06-02T17:04:40.249.000.

Processed Sun Jun 2 19:12:16 2019 by ELM ver.2012-10-06 from 001__elm20190602_170439__dat00.bin

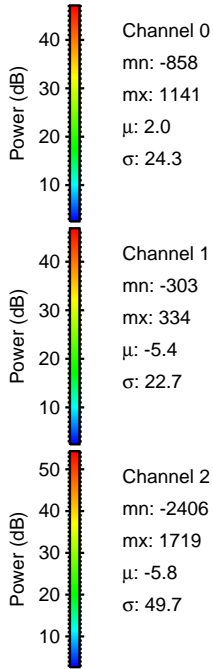
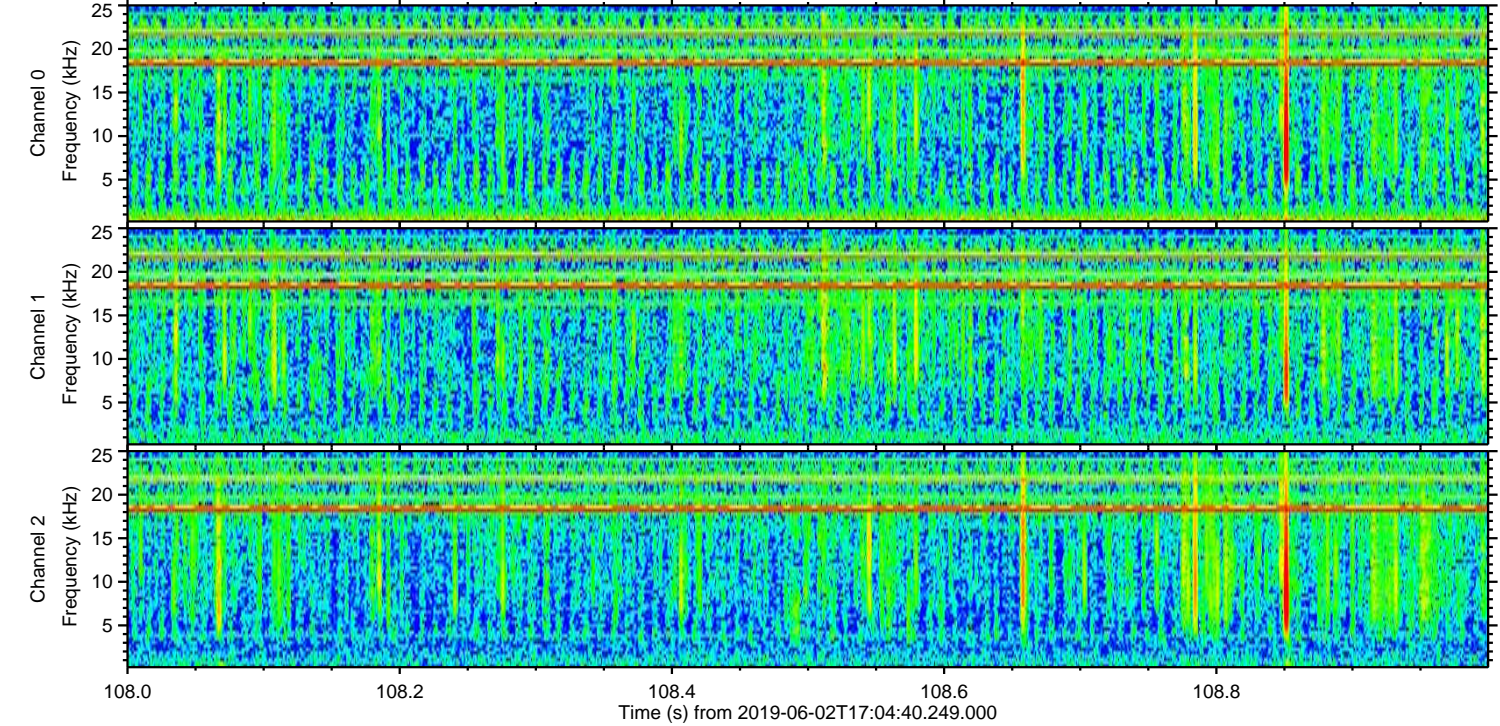
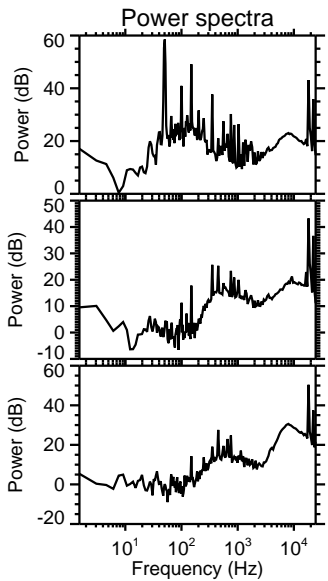
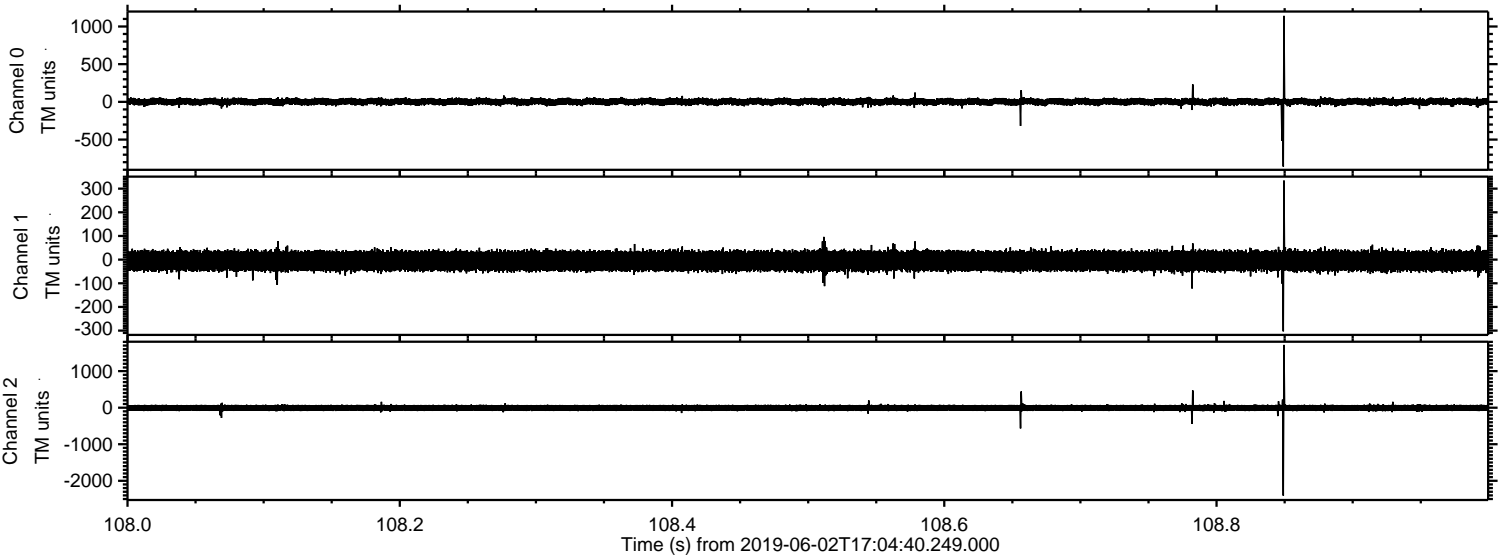


Processed Sun Jun 2 19:12:22 2019 by ELM ver.2012-10-06 from 001__elm20190602_170439__dat00.bin



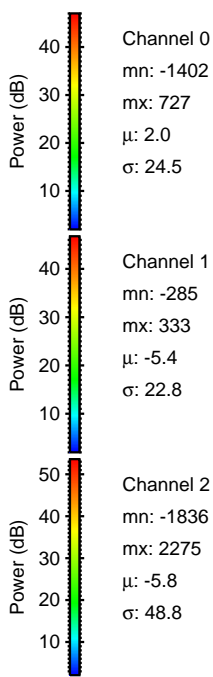
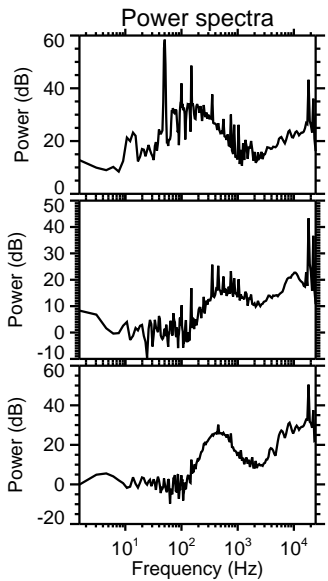
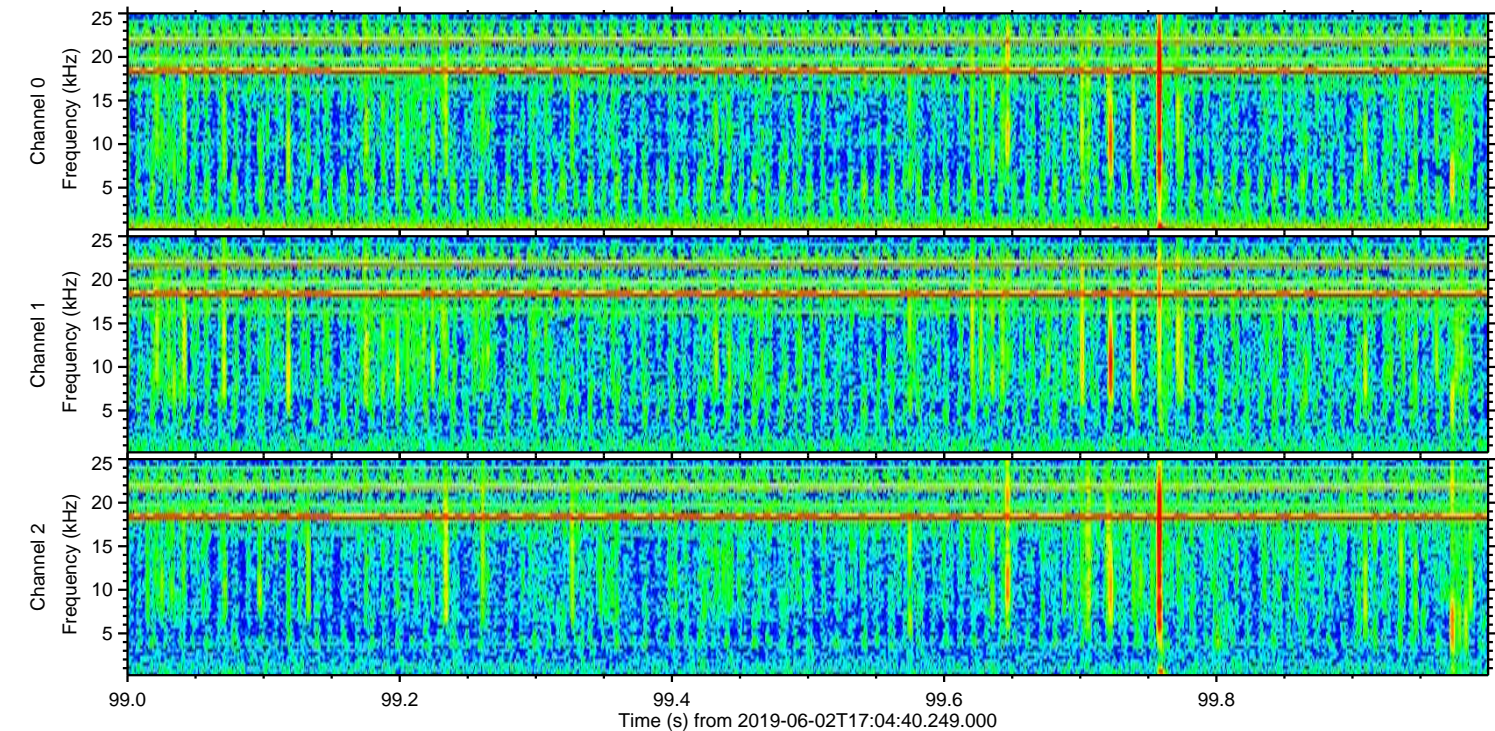
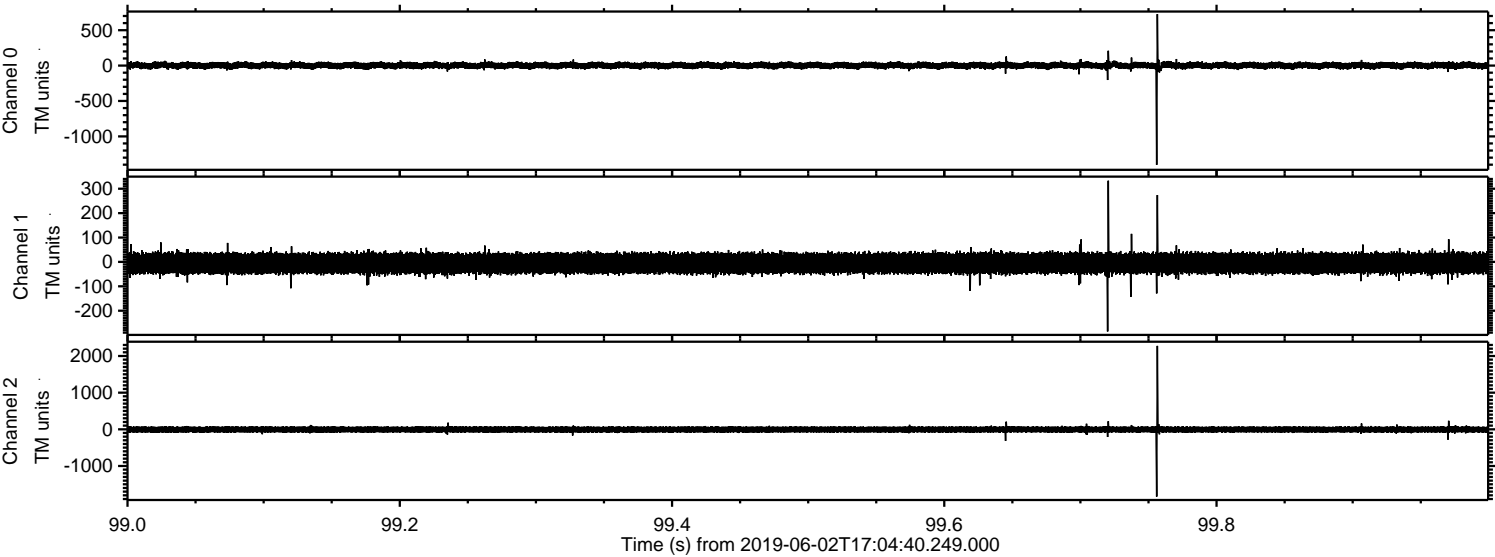
ELMAVAN 3D WAVEFORMS (Measured data sampled at 50 kHz) 51000 packets of 144 samples from 2019-06-02T17:04:40.249.000. Part 109/147

Processed Sun Jun 2 19:12:23 2019 by ELM ver.2012-10-06 from 001__elm20190602_170439__dat00.bin

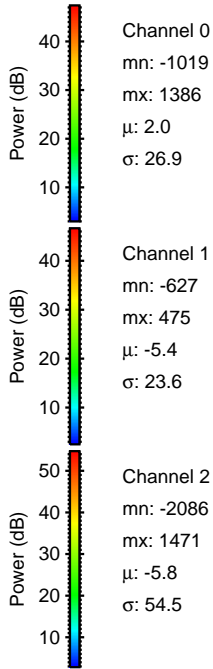
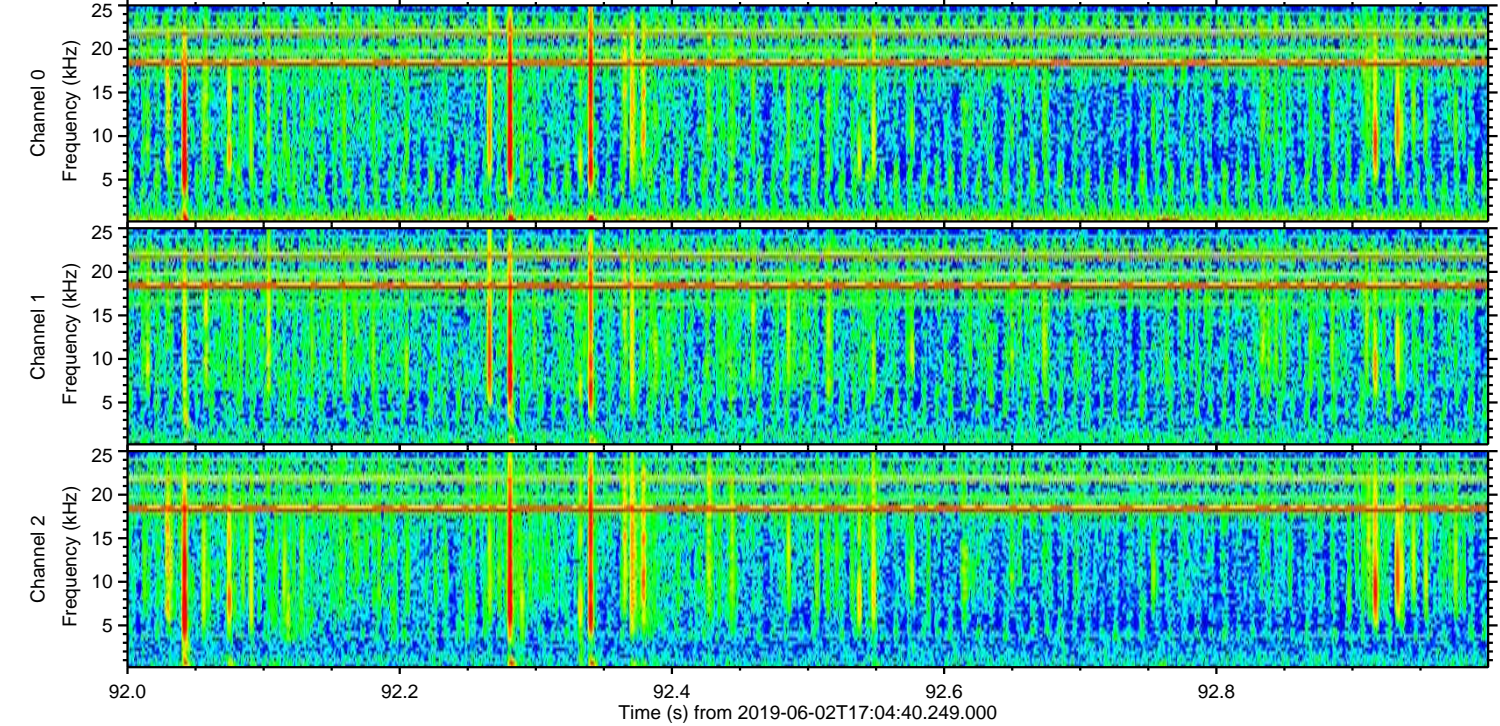
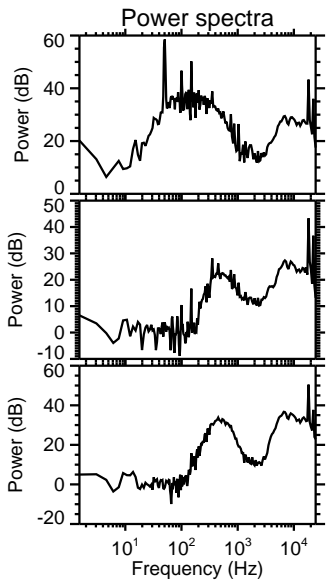
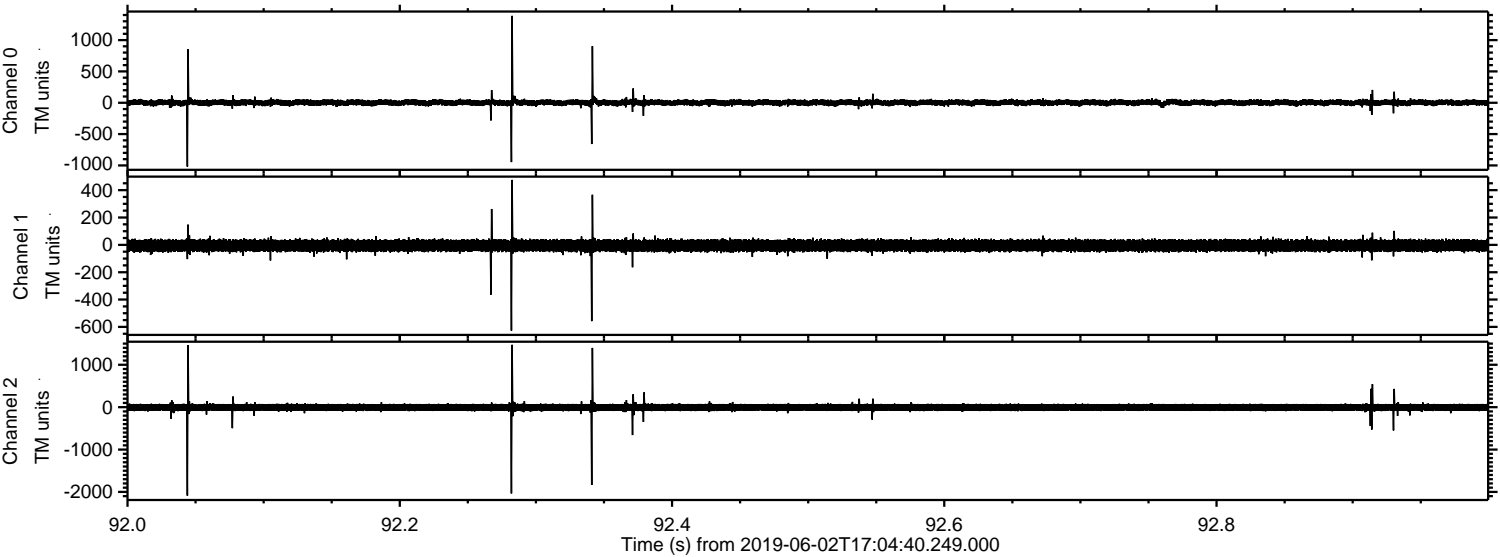


ELMAVAN 3D WAVEFORMS (Measured data sampled at 50 kHz) 51000 packets of 144 samples from 2019-06-02T17:04:40.249.000. Part 100/147

Processed Sun Jun 2 19:12:24 2019 by ELM ver.2012-10-06 from 001__elm20190602_170439__dat00.bin

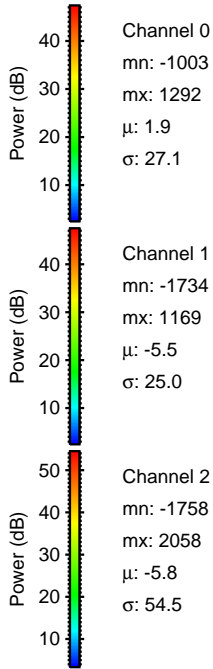
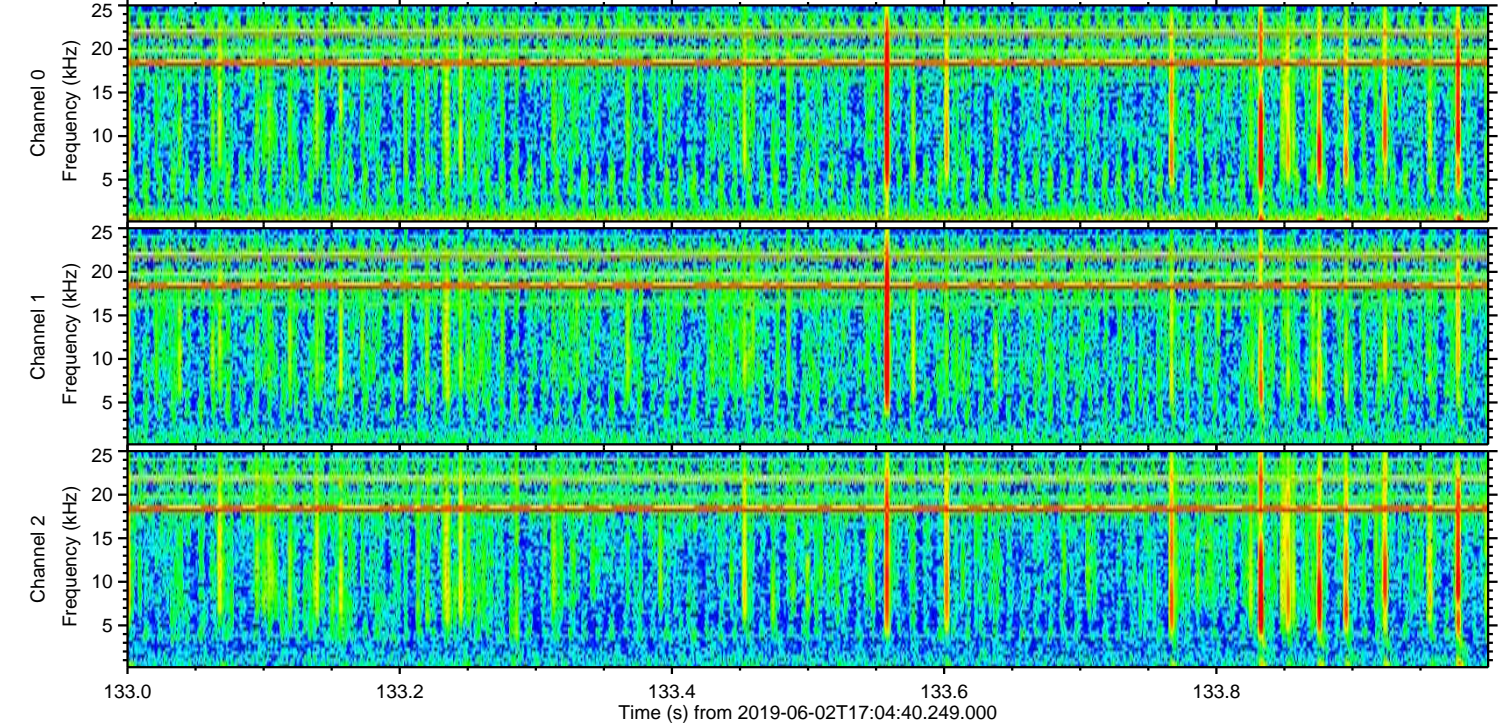
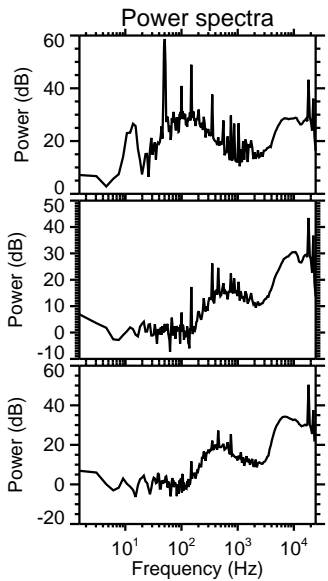
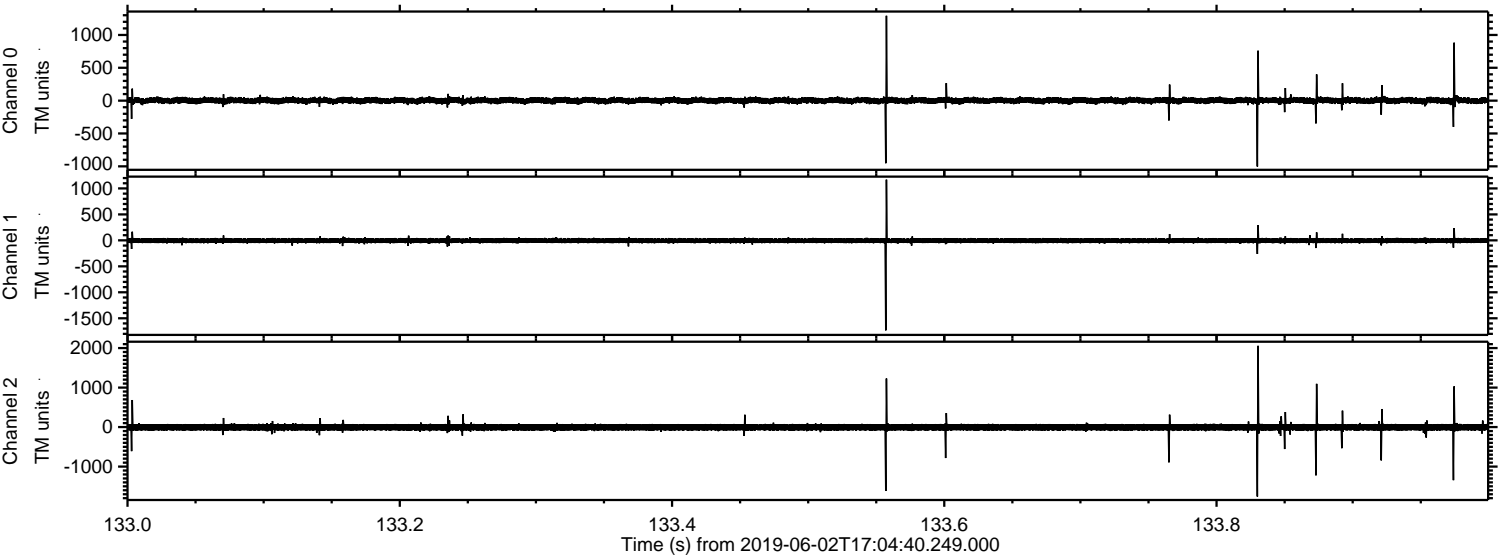


Processed Sun Jun 2 19:12:25 2019 by ELM ver.2012-10-06 from 001__elm20190602_170439__dat00.bin



ELMAVAN 3D WAVEFORMS (Measured data sampled at 50 kHz) 51000 packets of 144 samples from 2019-06-02T17:04:40.249.000. Part 134/147

Processed Sun Jun 2 19:12:25 2019 by ELM ver.2012-10-06 from 001__elm20190602_170439__dat00.bin

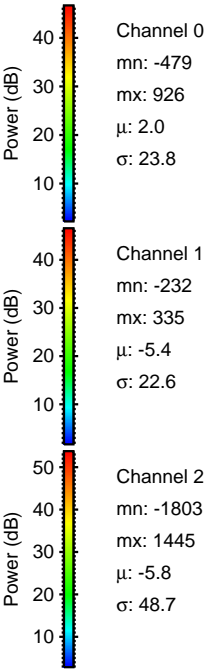
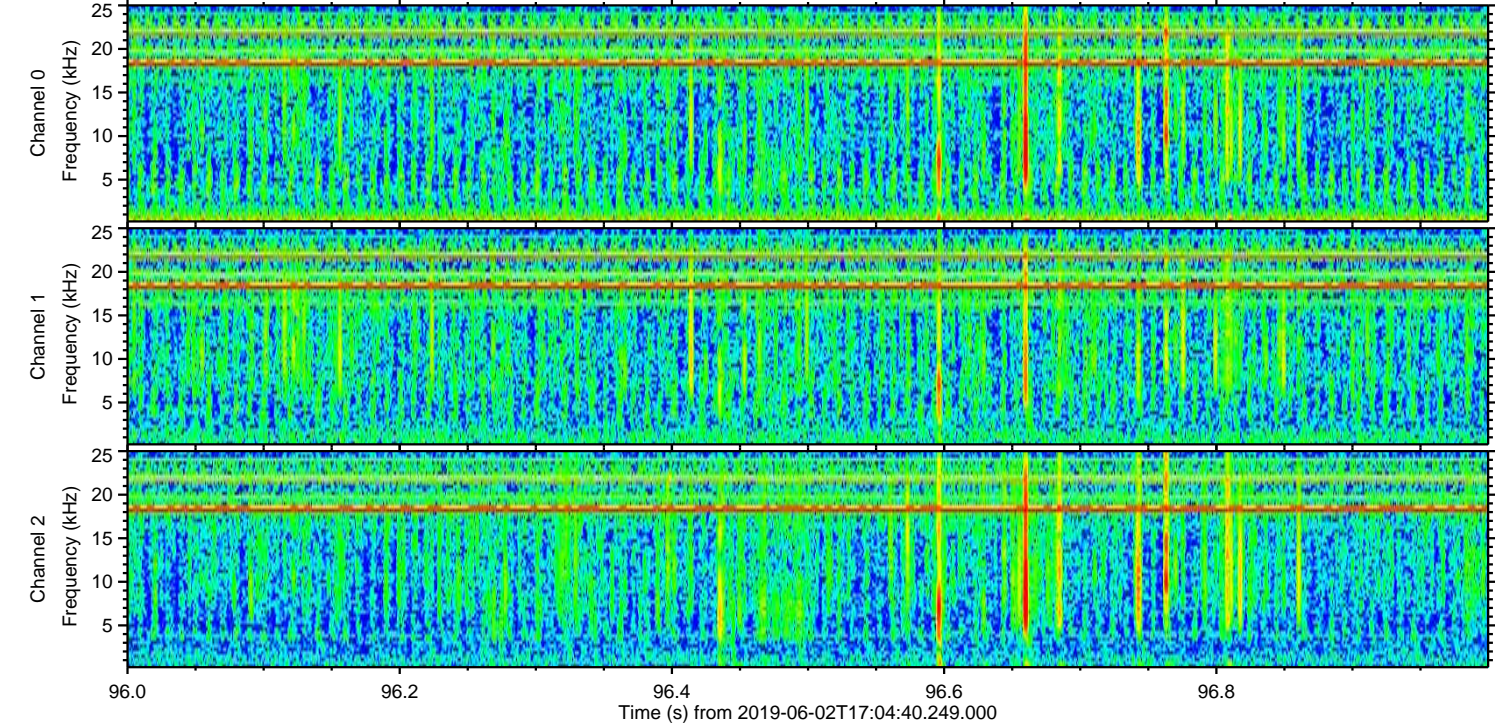
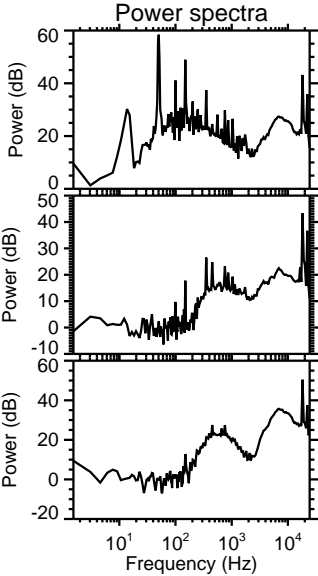
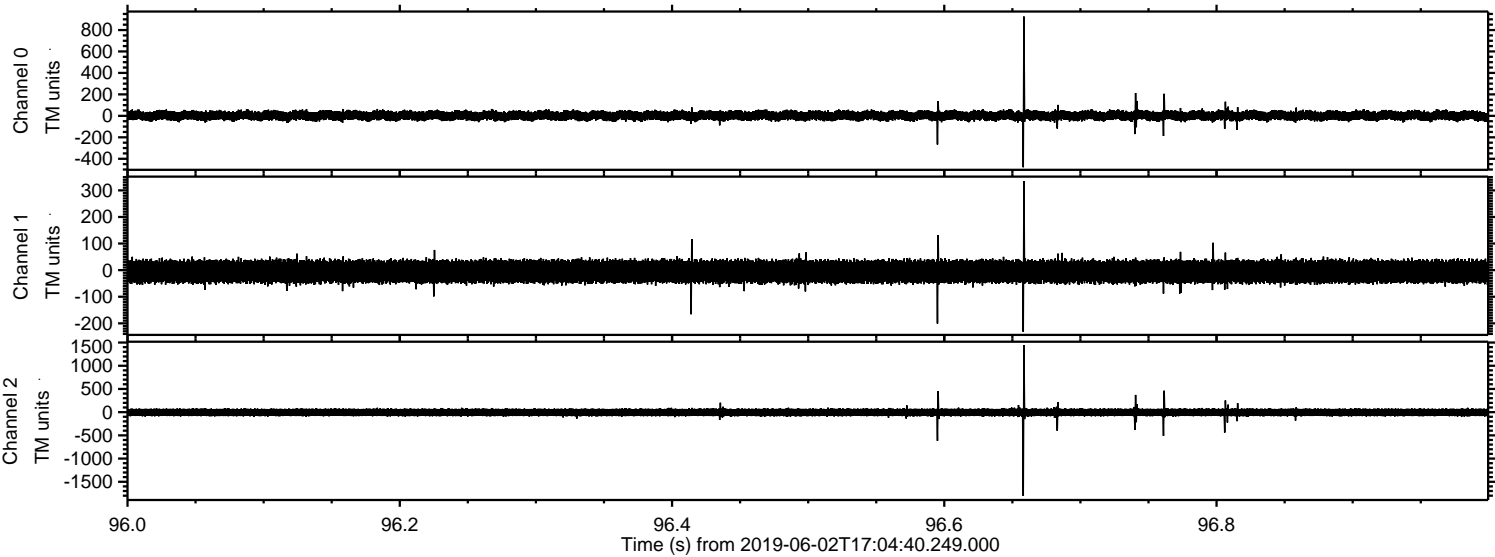


Channel 0
mn: -1003
mx: 1292
 μ : 1.9
 σ : 27.1

Channel 1
mn: -1734
mx: 1169
 μ : -5.5
 σ : 25.0

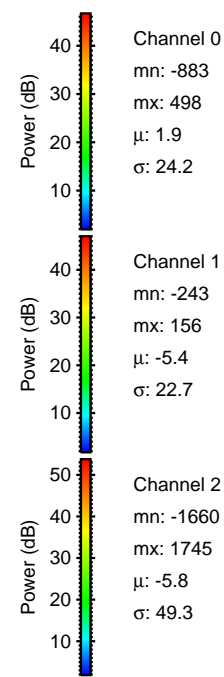
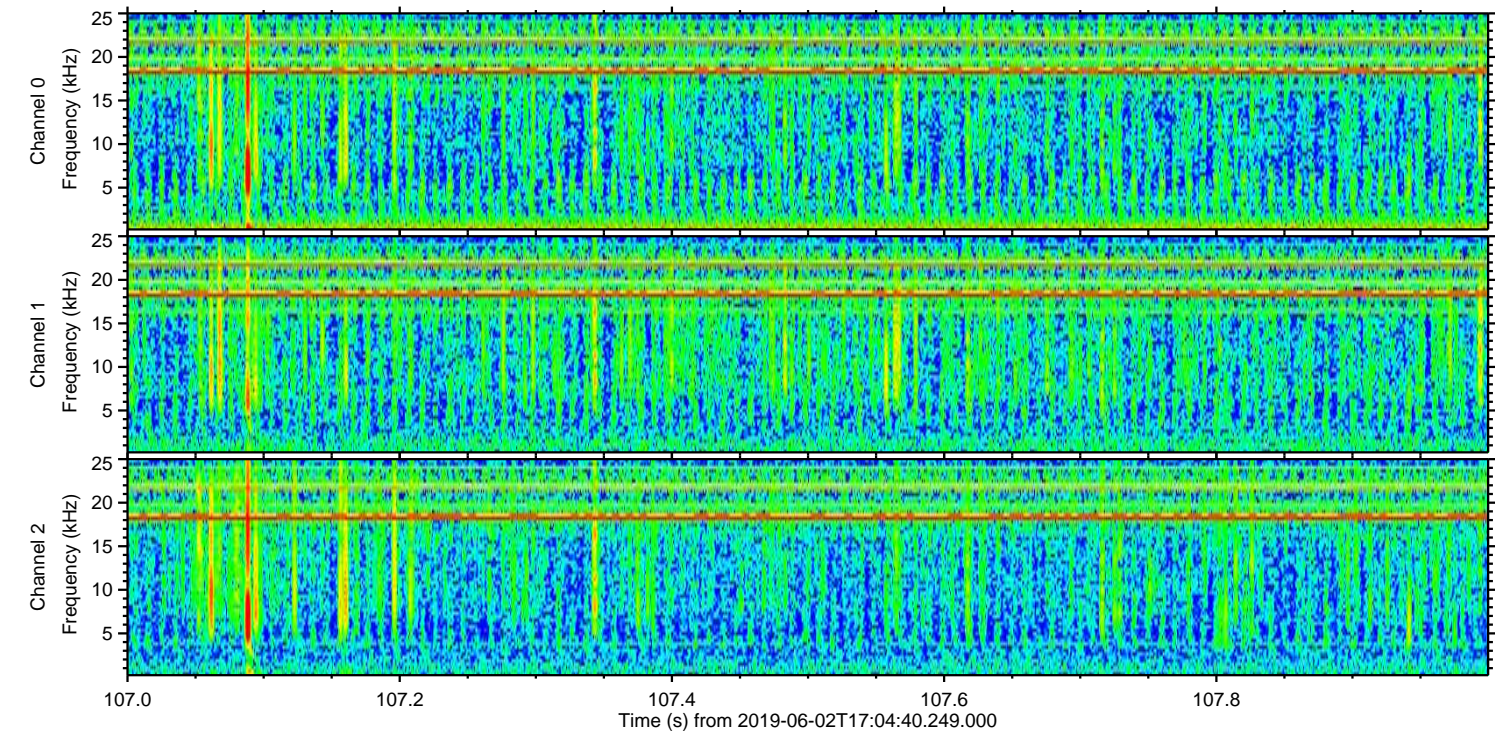
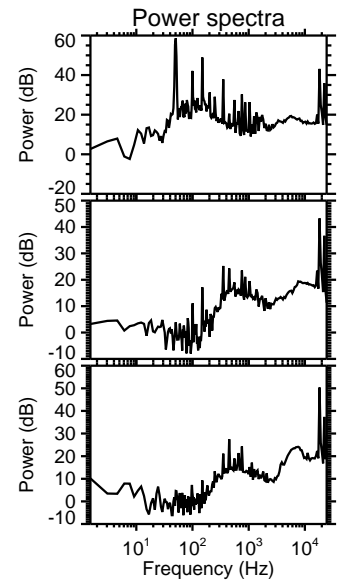
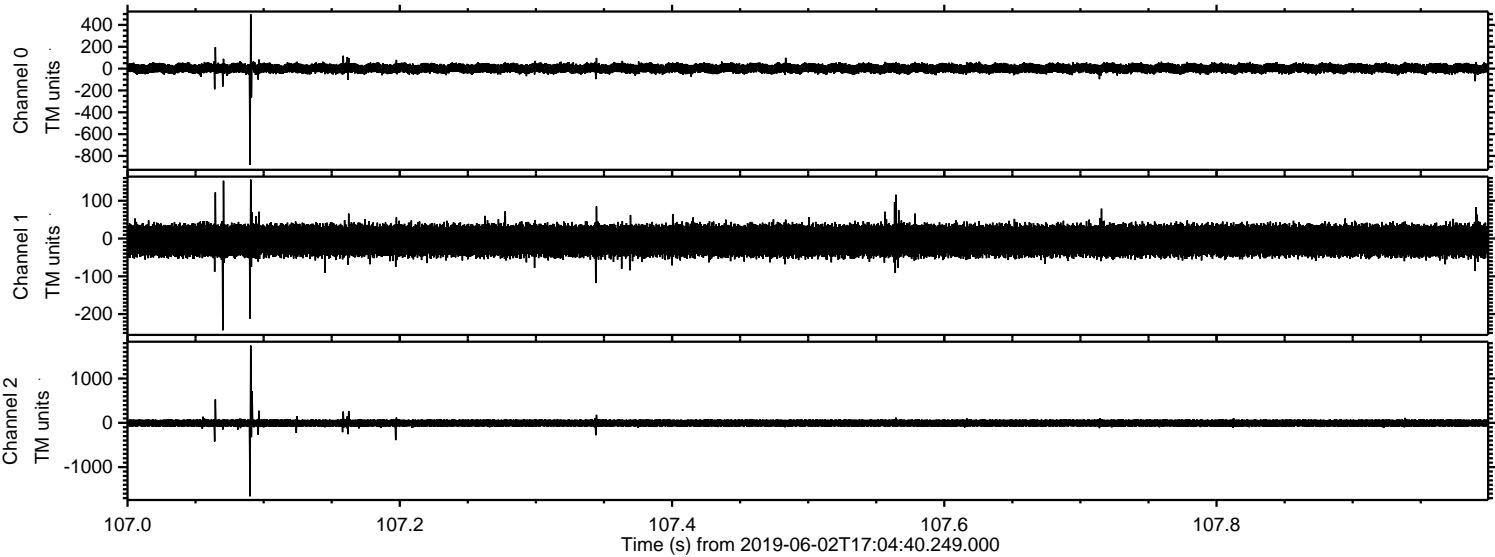
Channel 2
mn: -1758
mx: 2058
 μ : -5.8
 σ : 54.5

Processed Sun Jun 2 19:12:26 2019 by ELM ver.2012-10-06 from 001__elm20190602_170439__dat00.bin

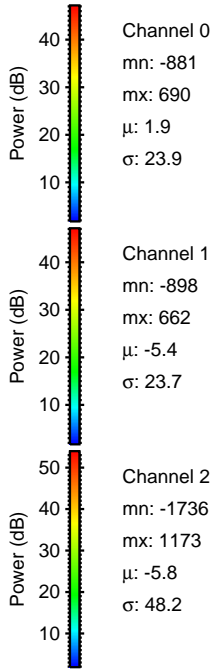
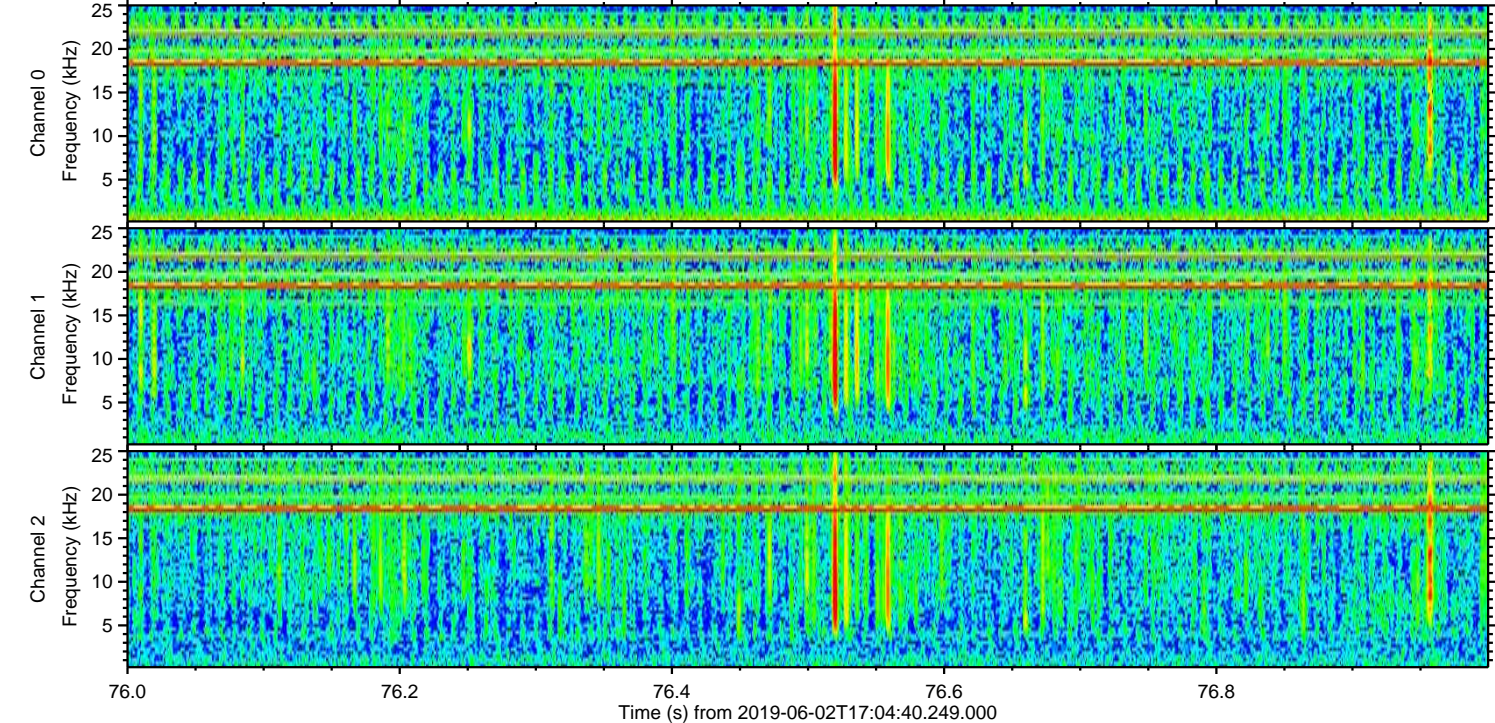
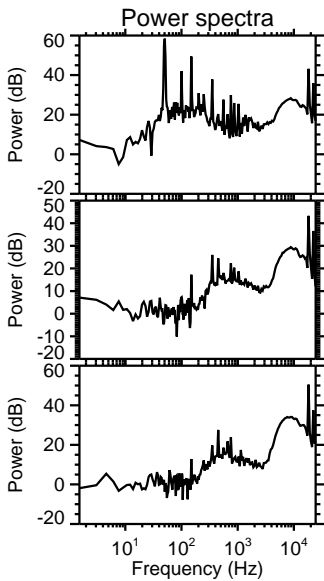
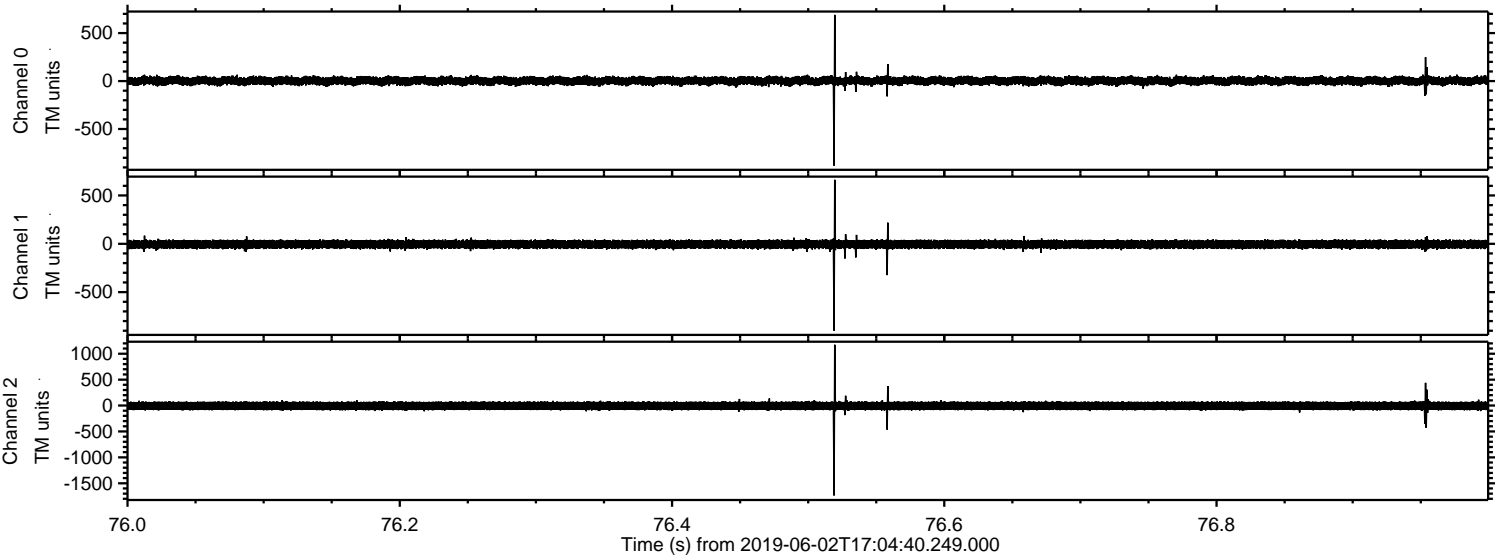


ELMAVAN 3D WAVEFORMS (Measured data sampled at 50 kHz) 51000 packets of 144 samples from 2019-06-02T17:04:40.249.000. Part 108/147

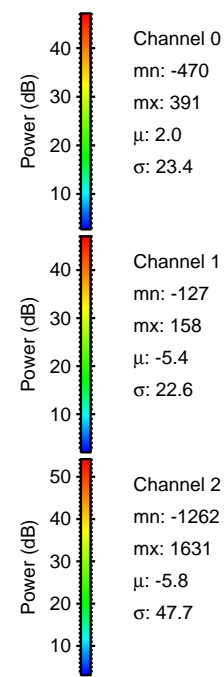
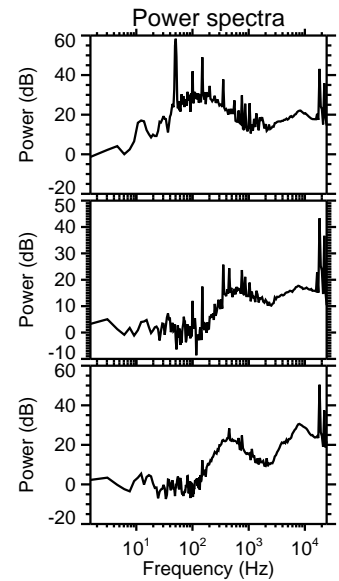
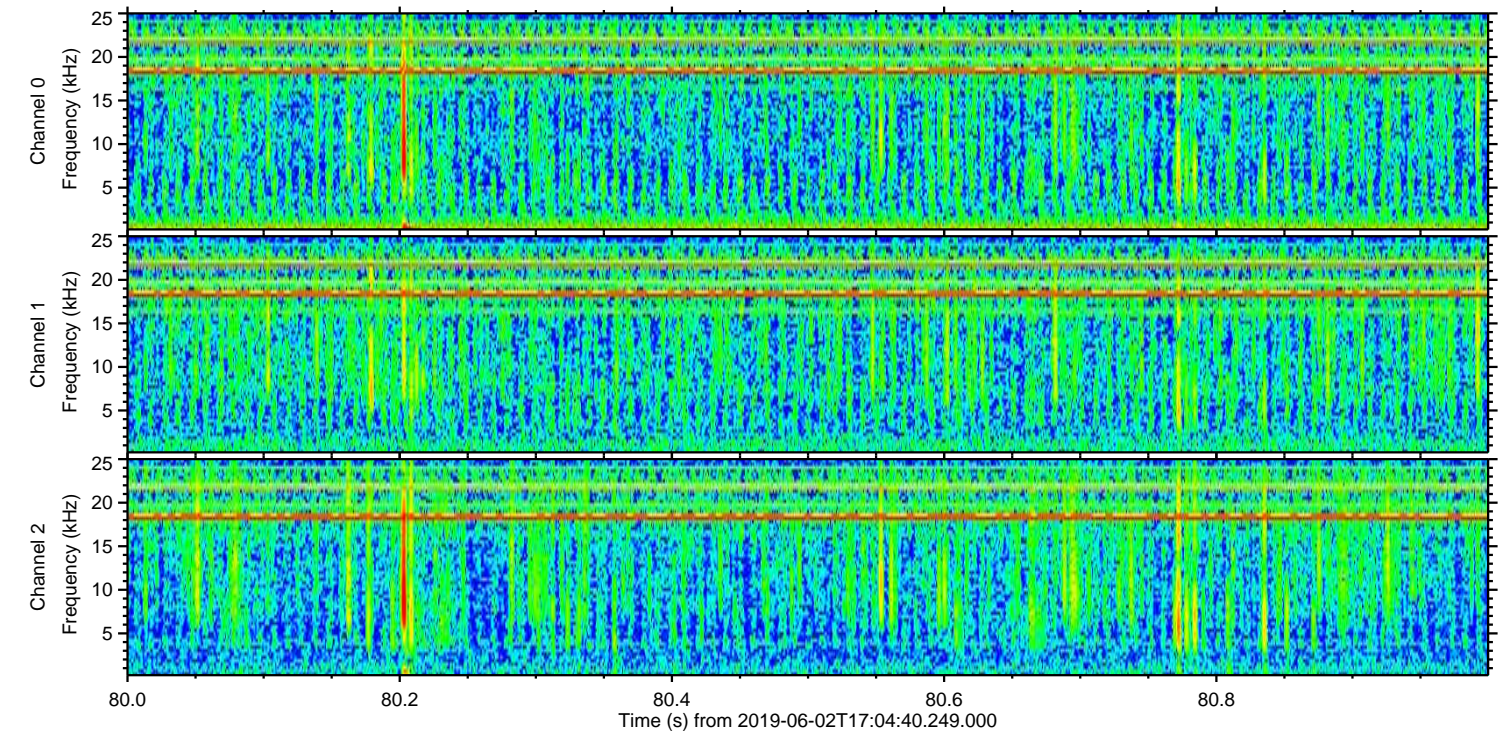
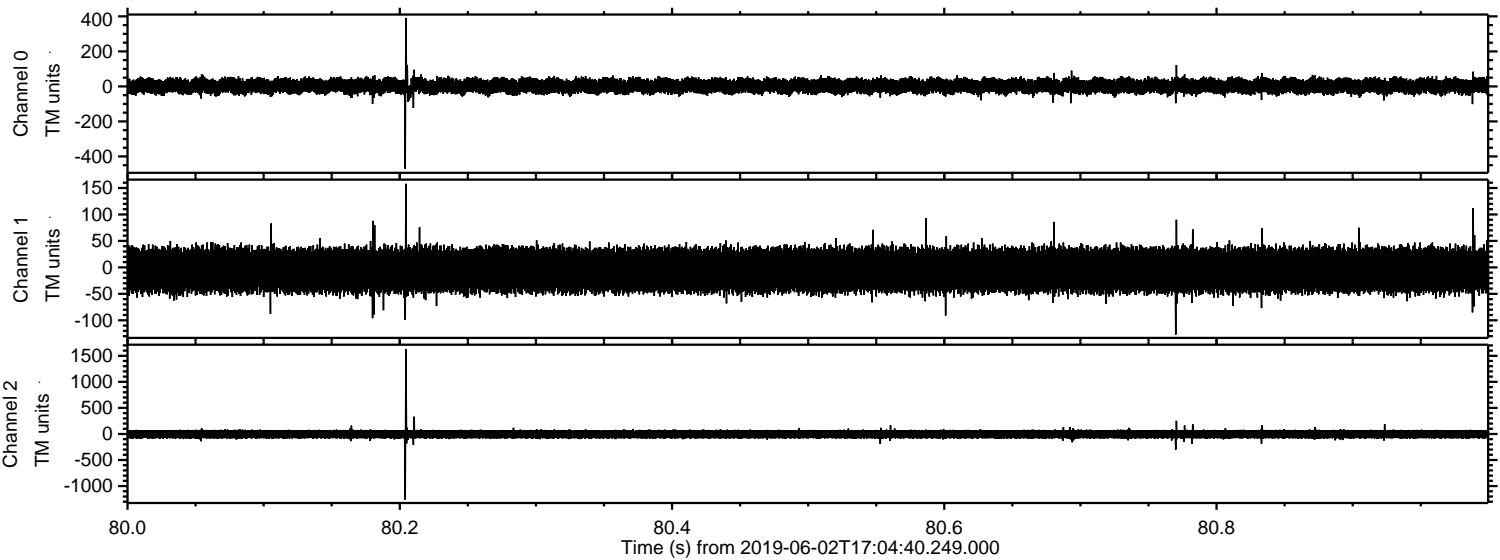
Processed Sun Jun 2 19:12:27 2019 by ELM ver.2012-10-06 from 001__elm20190602_170439__dat00.bin



Processed Sun Jun 2 19:12:27 2019 by ELM ver.2012-10-06 from 001__elm20190602_170439__dat00.bin



Processed Sun Jun 2 19:12:28 2019 by ELM ver.2012-10-06 from 001__elm20190602_170439__dat00.bin



Channel 0
mn: -470
mx: 391
 μ : 2.0
 σ : 23.4

Channel 1
mn: -127
mx: 158
 μ : -5.4
 σ : 22.6

Channel 2
mn: -1262
mx: 1631
 μ : -5.8
 σ : 47.7

