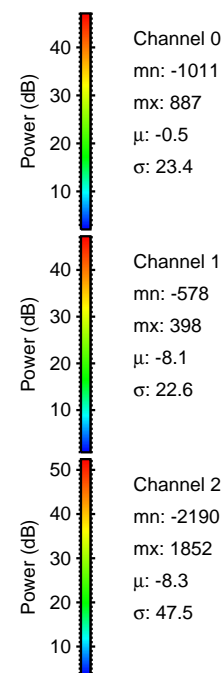
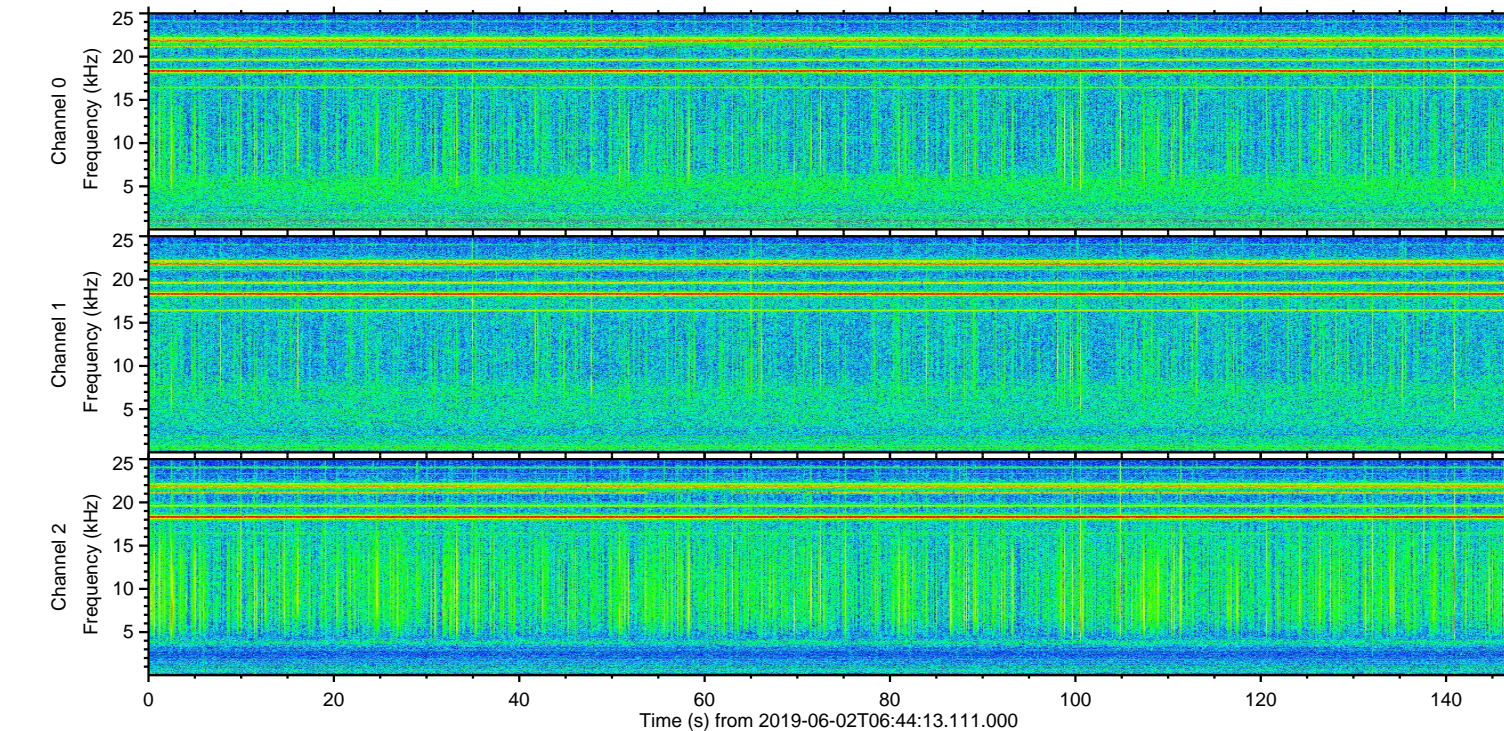
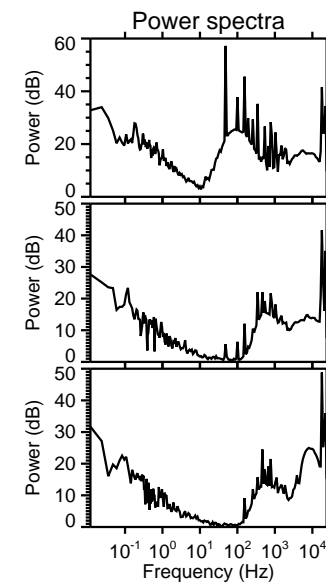
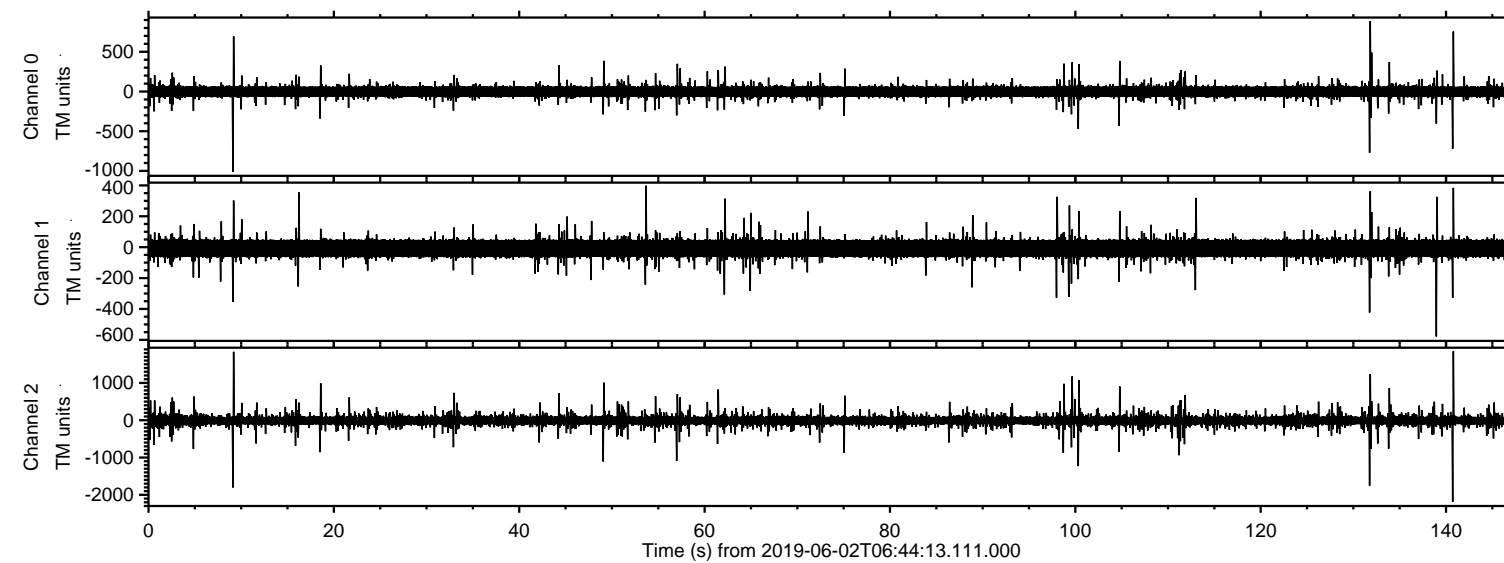


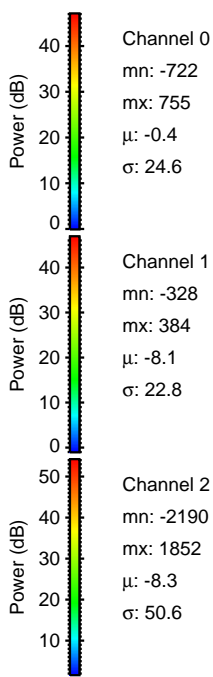
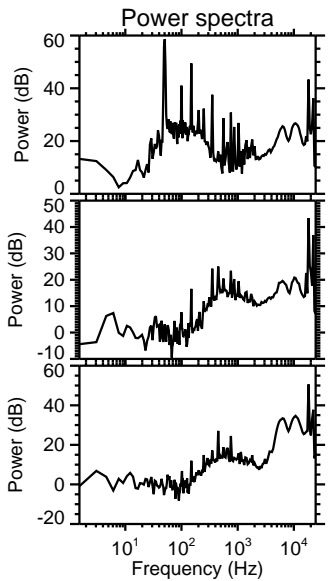
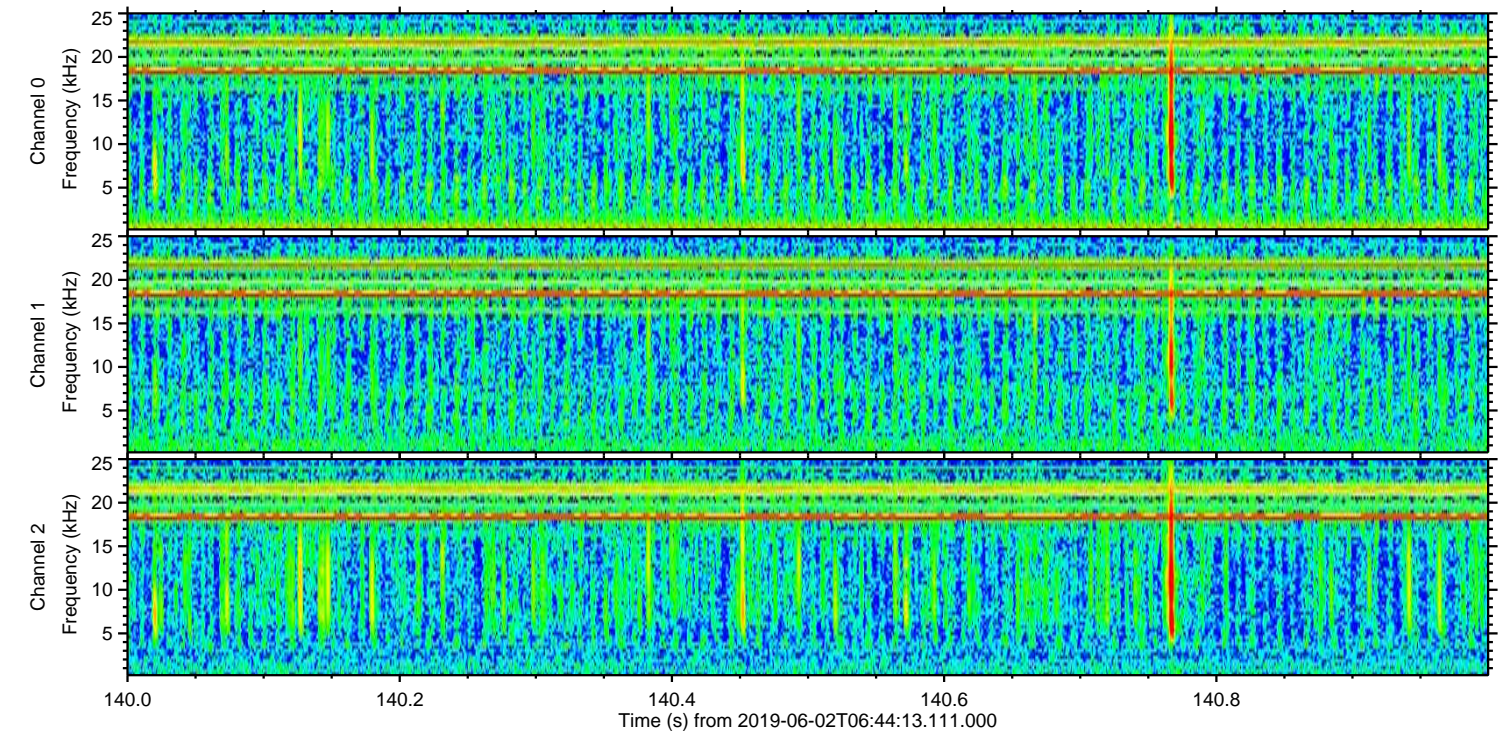
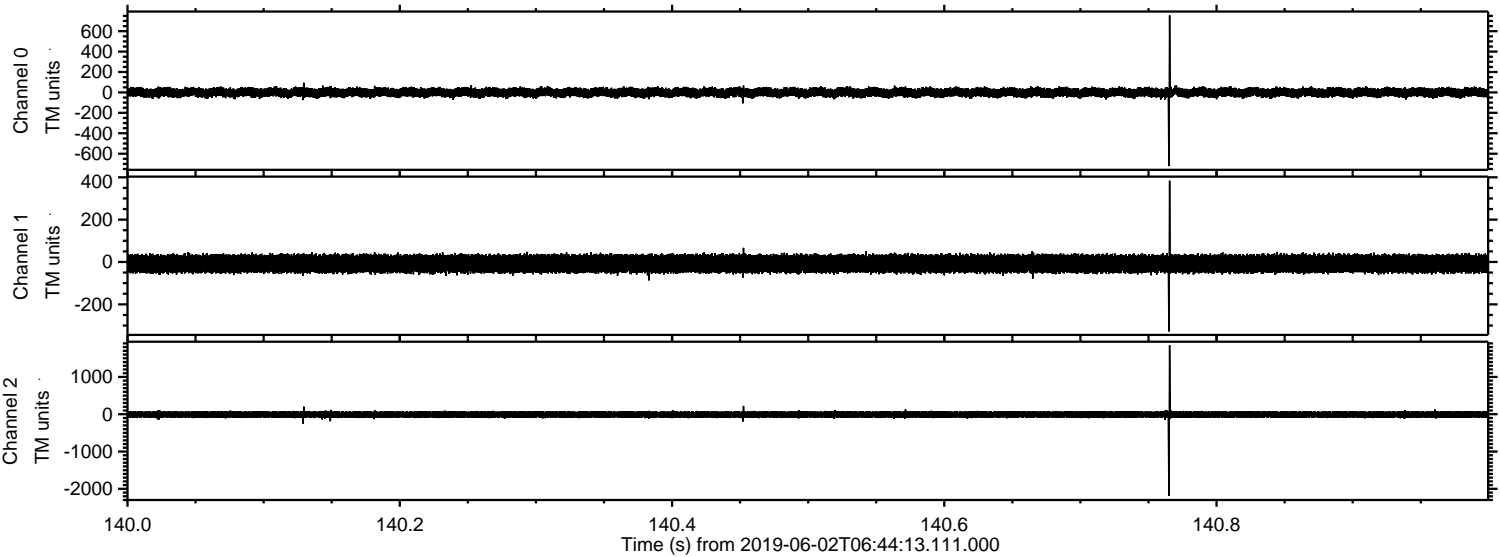
ELMAVAN 3D WAVEFORMS (Measured data sampled at 50 kHz) 51000 packets of 144 samples from 2019-06-02T06:44:13.111.000.

Processed Sun Jun 2 08:51:47 2019 by ELM ver.2012-10-06 from 001__elm20190602_064412__dat00.bin



ELMAVAN 3D WAVEFORMS (Measured data sampled at 50 kHz) 51000 packets of 144 samples from 2019-06-02T06:44:13.111.000. Part 141/147

Processed Sun Jun 2 08:51:53 2019 by ELM ver.2012-10-06 from 001__elm20190602_064412__dat00.bin

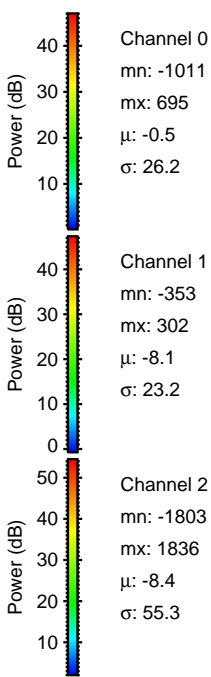
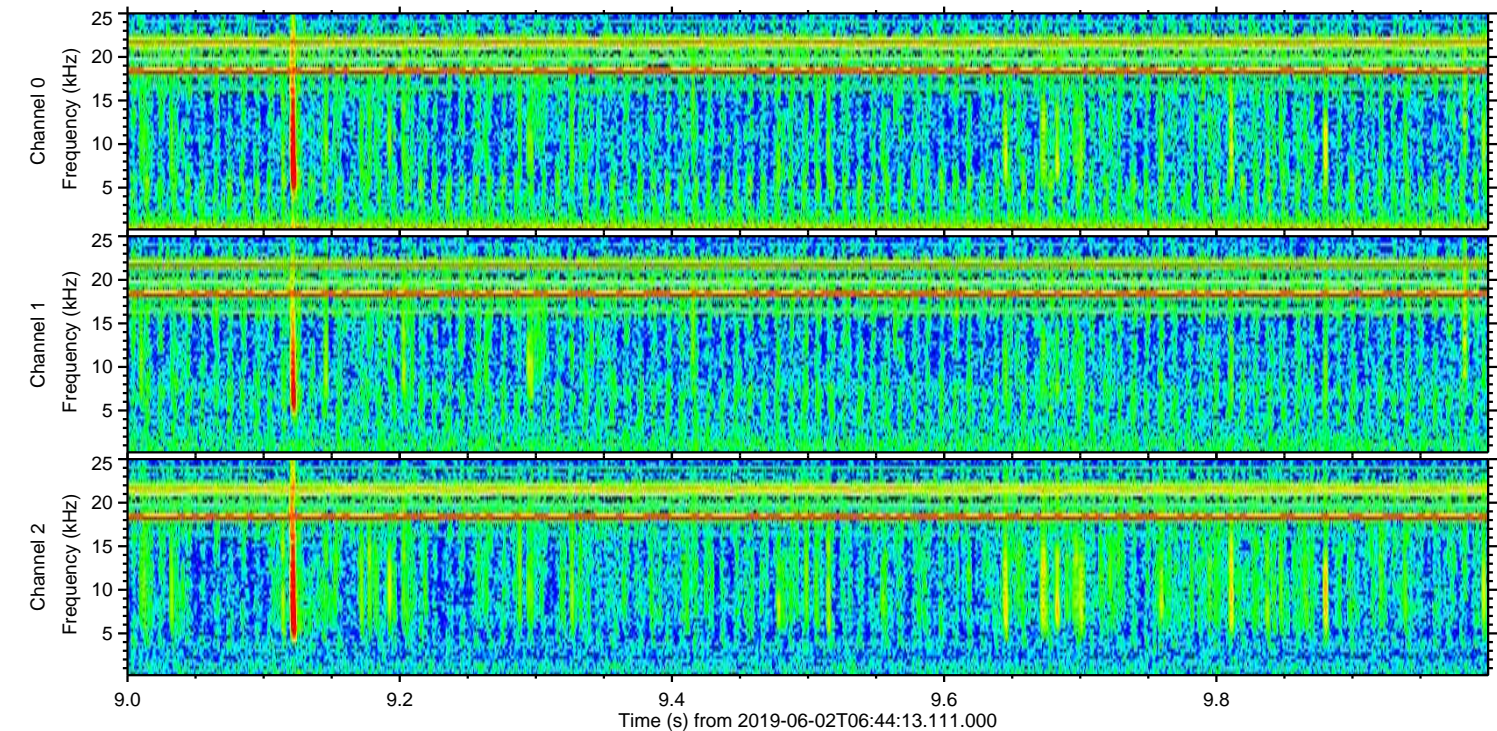
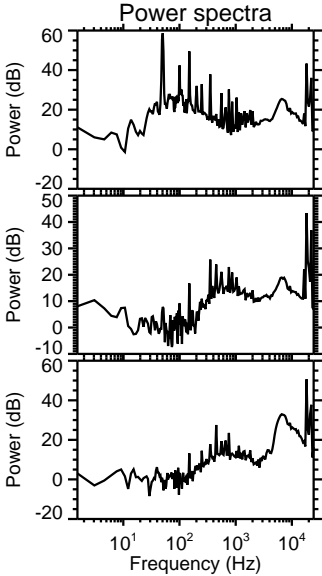
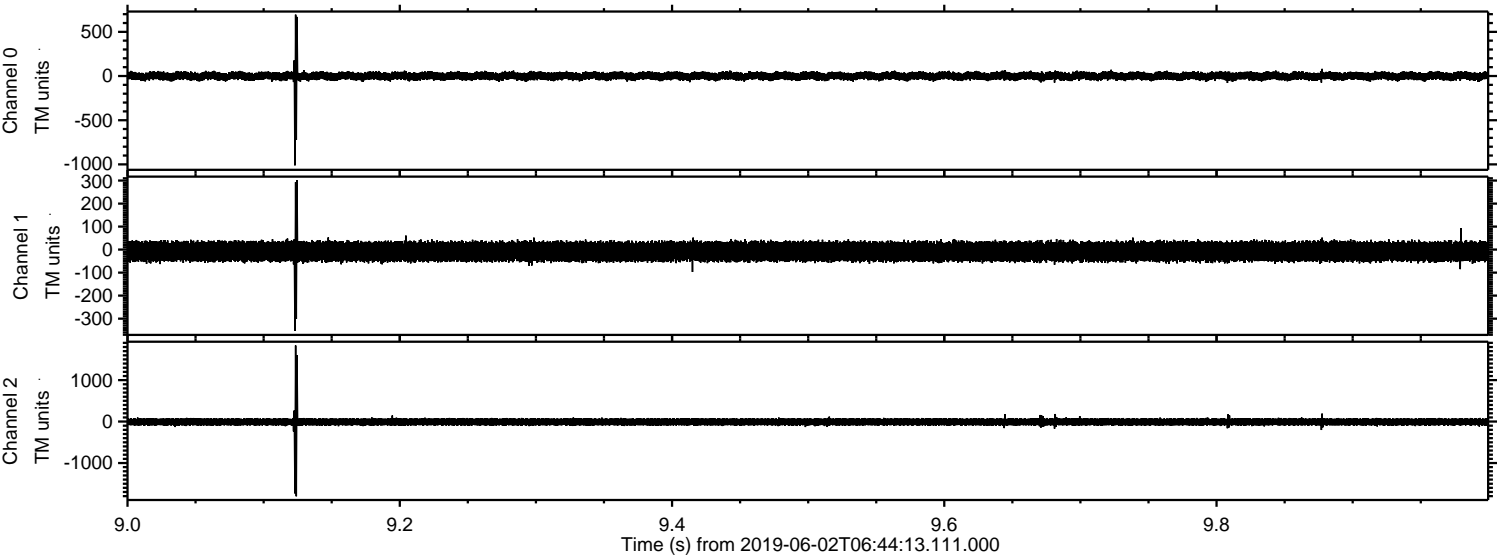


Channel 0
mn: -722
mx: 755
 μ : -0.4
 σ : 24.6

Channel 1
mn: -328
mx: 384
 μ : -8.1
 σ : 22.8

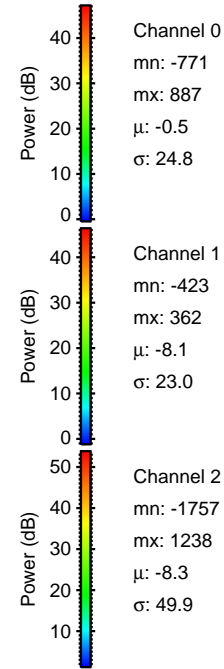
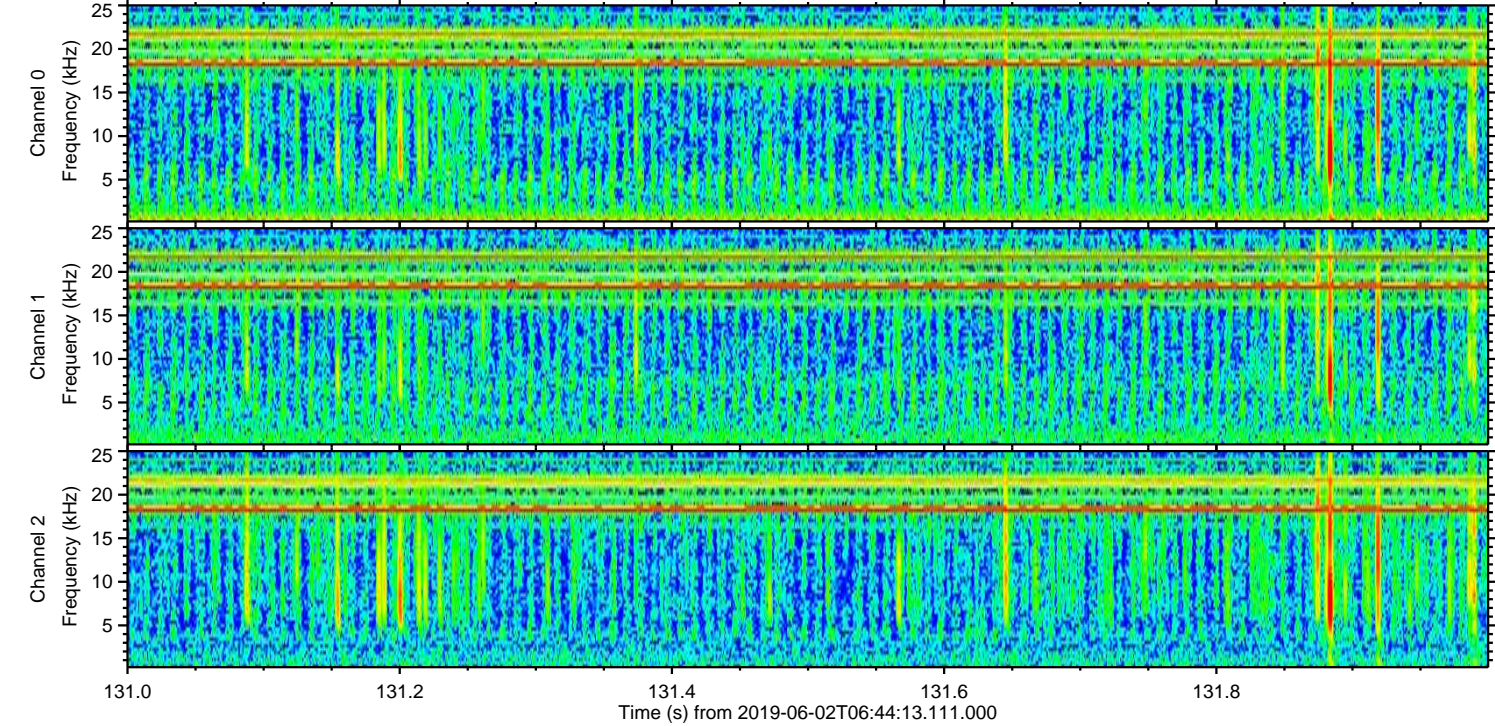
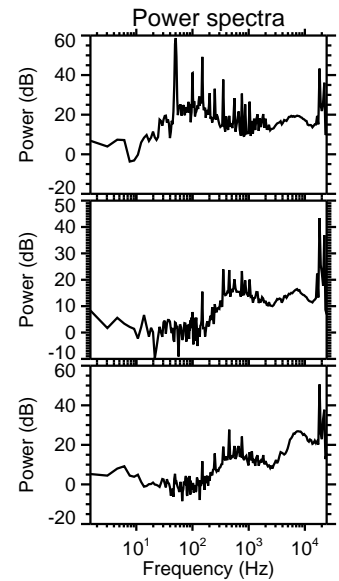
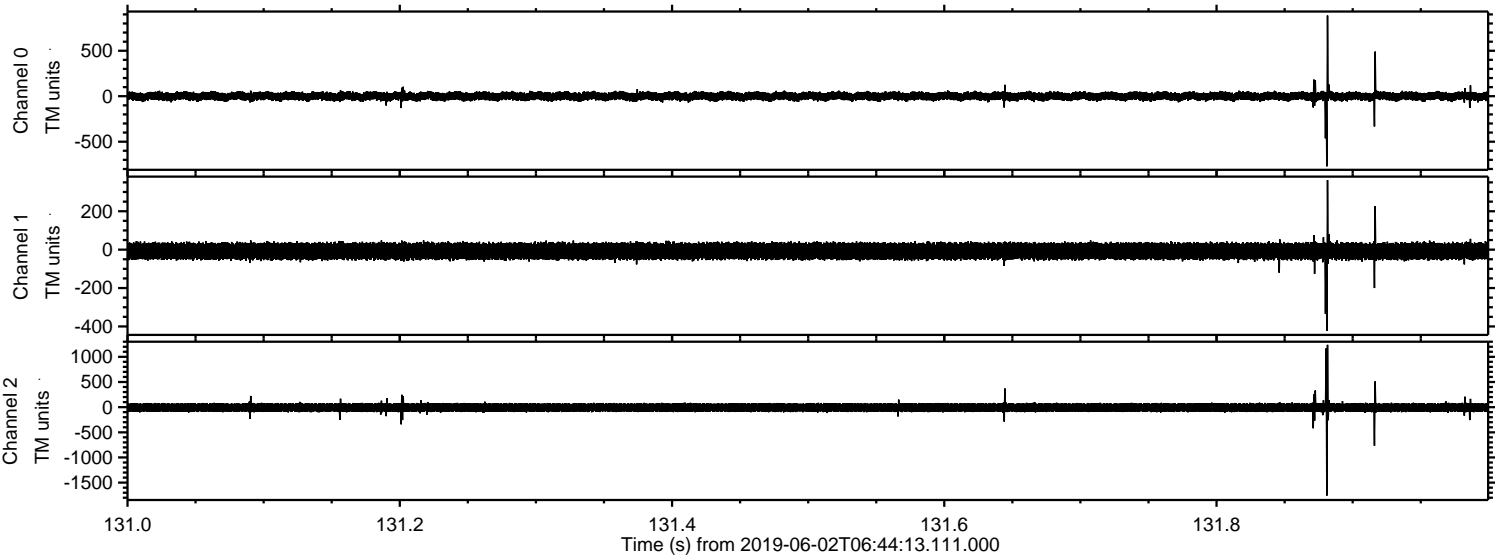
Channel 2
mn: -2190
mx: 1852
 μ : -8.3
 σ : 50.6

Processed Sun Jun 2 08:51:54 2019 by ELM ver.2012-10-06 from 001__elm20190602_064412__dat00.bin



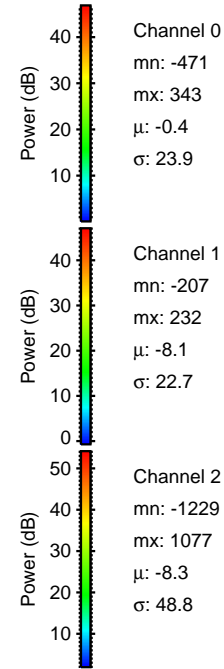
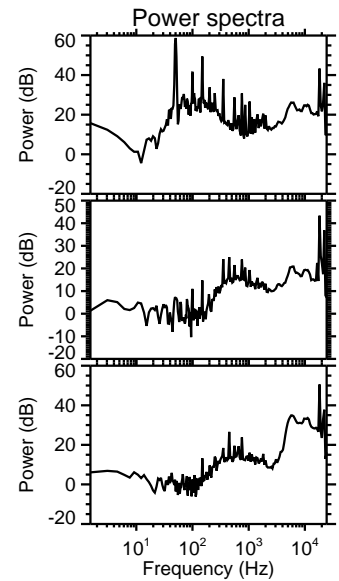
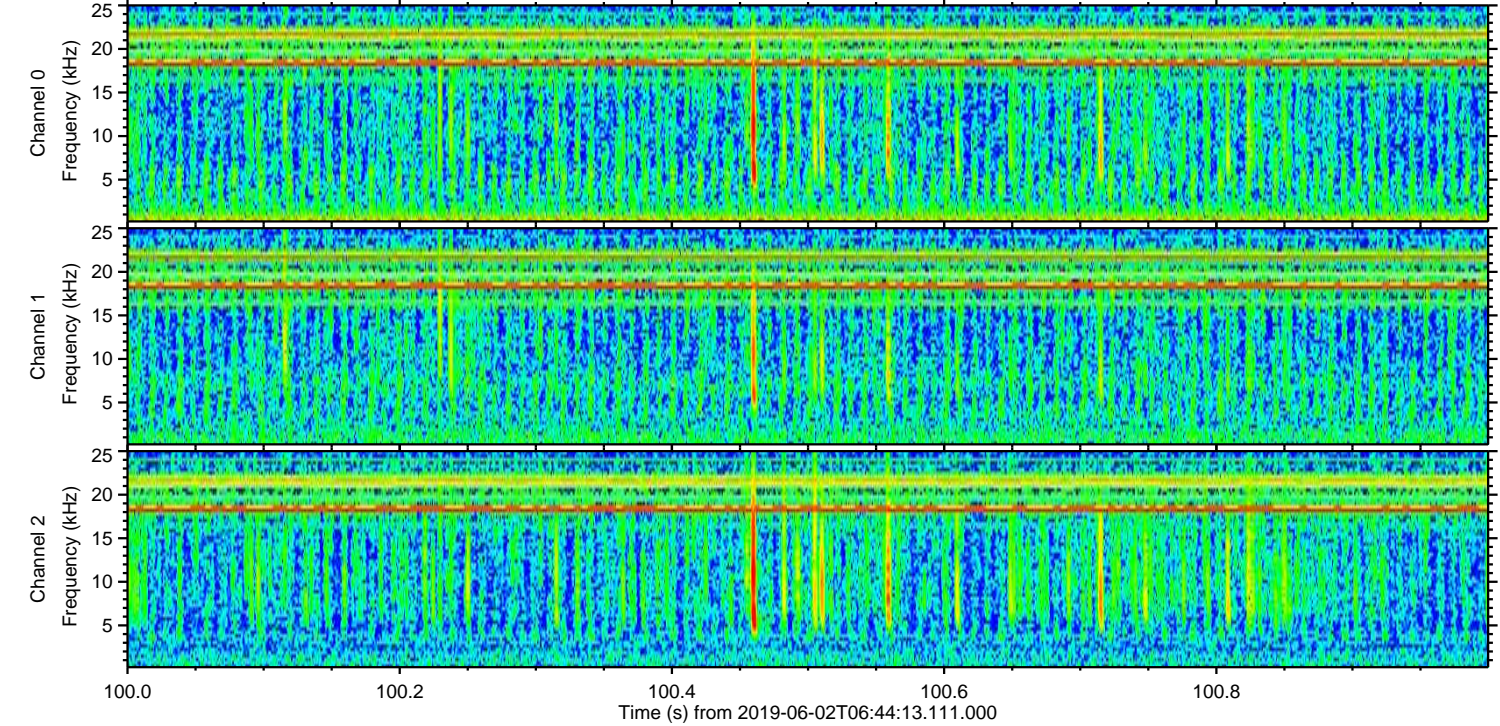
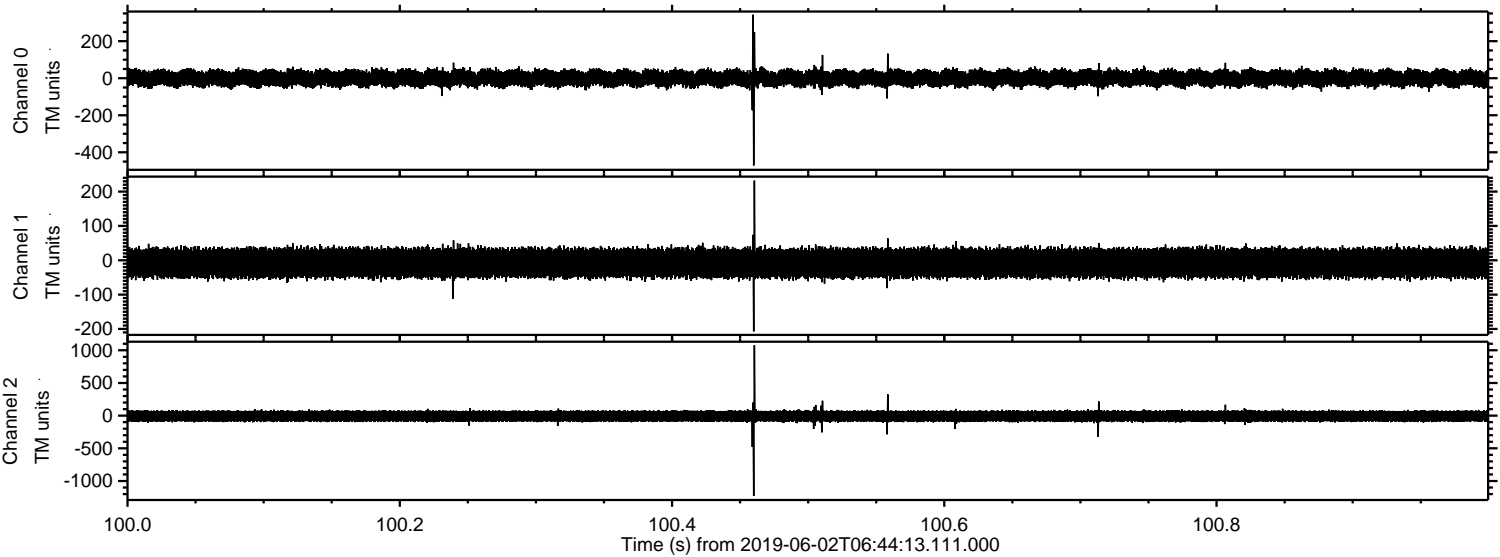
ELMAVAN 3D WAVEFORMS (Measured data sampled at 50 kHz) 51000 packets of 144 samples from 2019-06-02T06:44:13.111.000. Part 132/147

Processed Sun Jun 2 08:51:55 2019 by ELM ver.2012-10-06 from 001__elm20190602_064412__dat00.bin



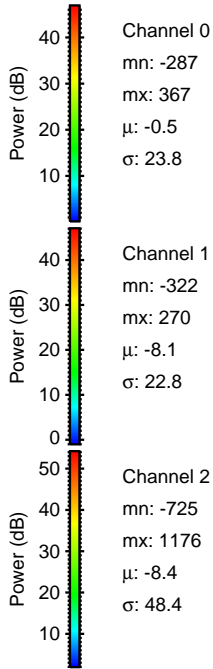
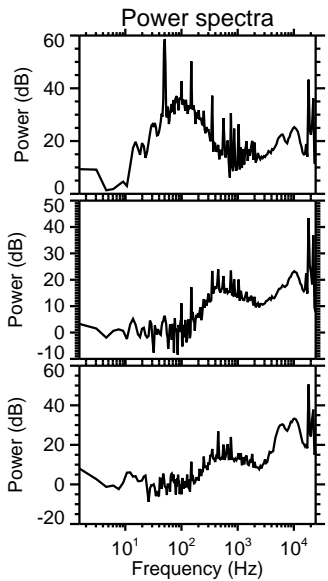
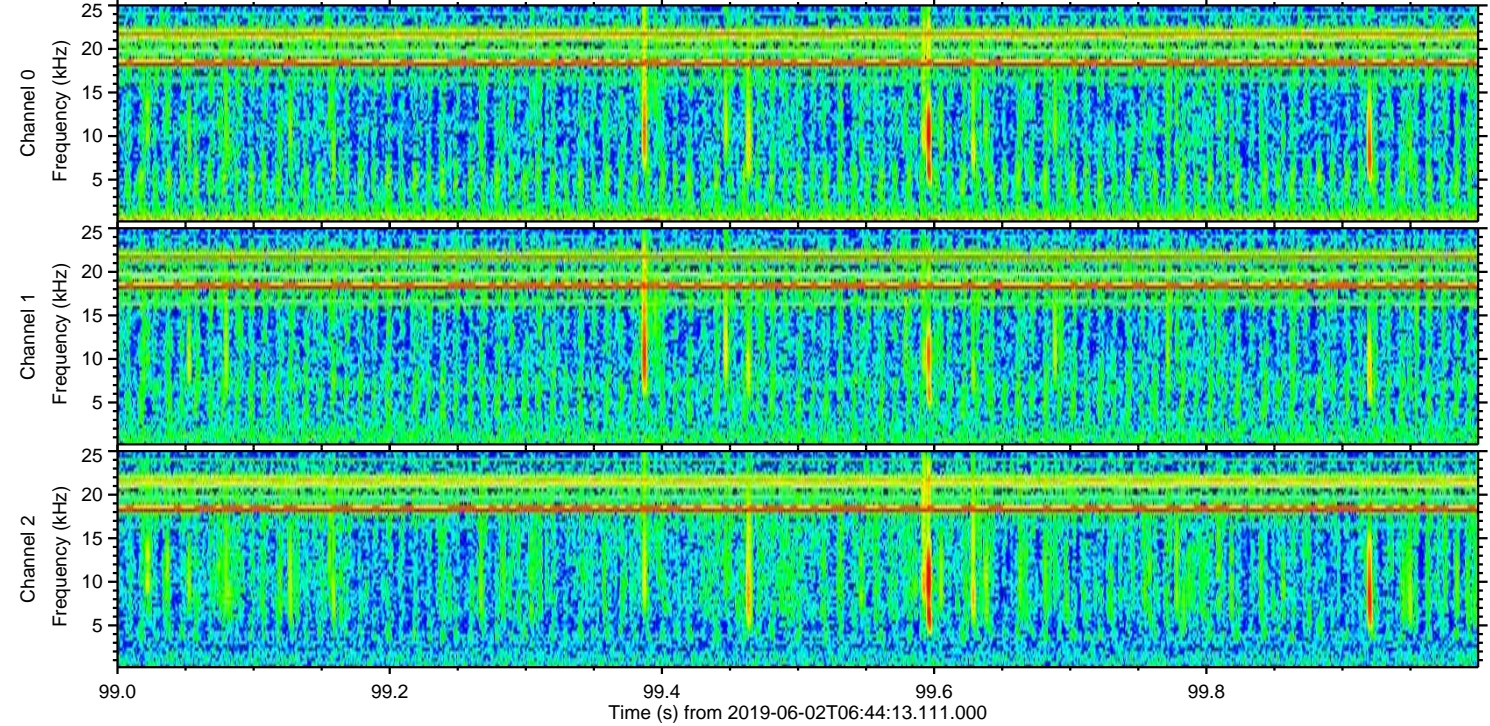
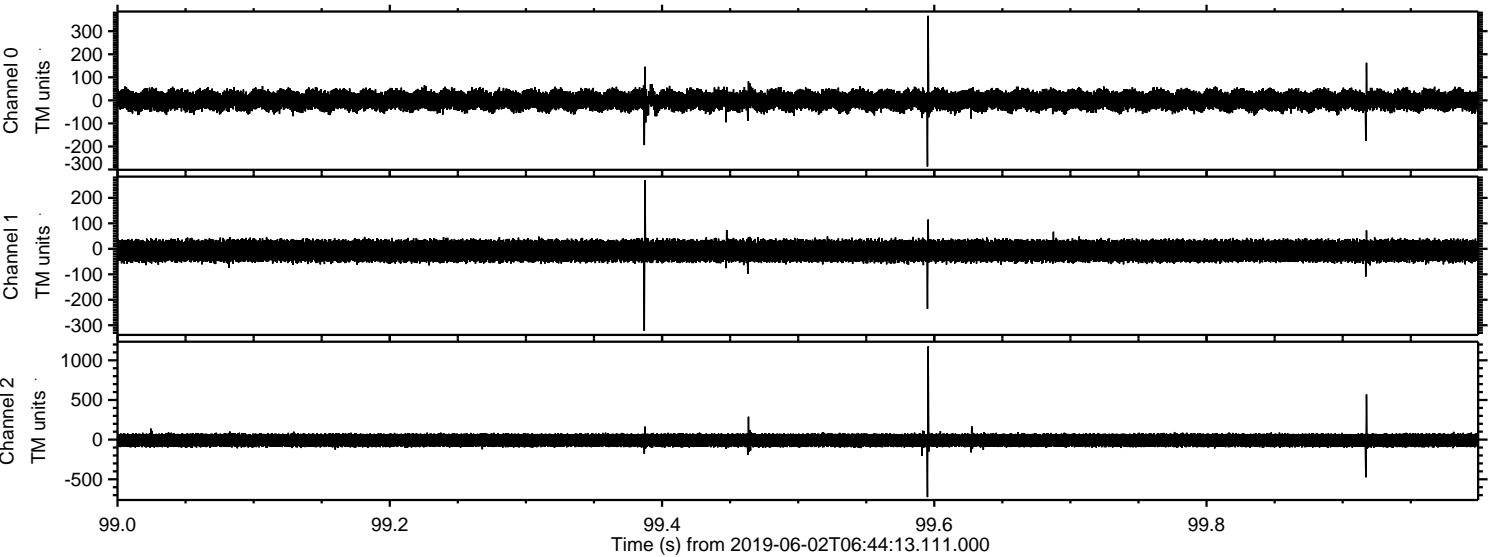
ELMAVAN 3D WAVEFORMS (Measured data sampled at 50 kHz) 51000 packets of 144 samples from 2019-06-02T06:44:13.111.000. Part 101/147

Processed Sun Jun 2 08:51:56 2019 by ELM ver.2012-10-06 from 001__elm20190602_064412__dat00.bin

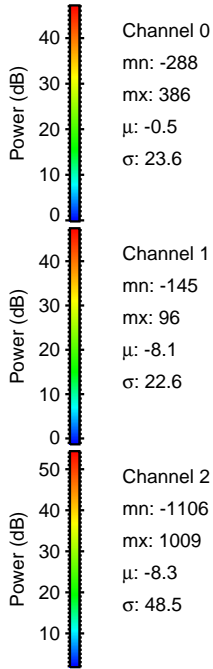
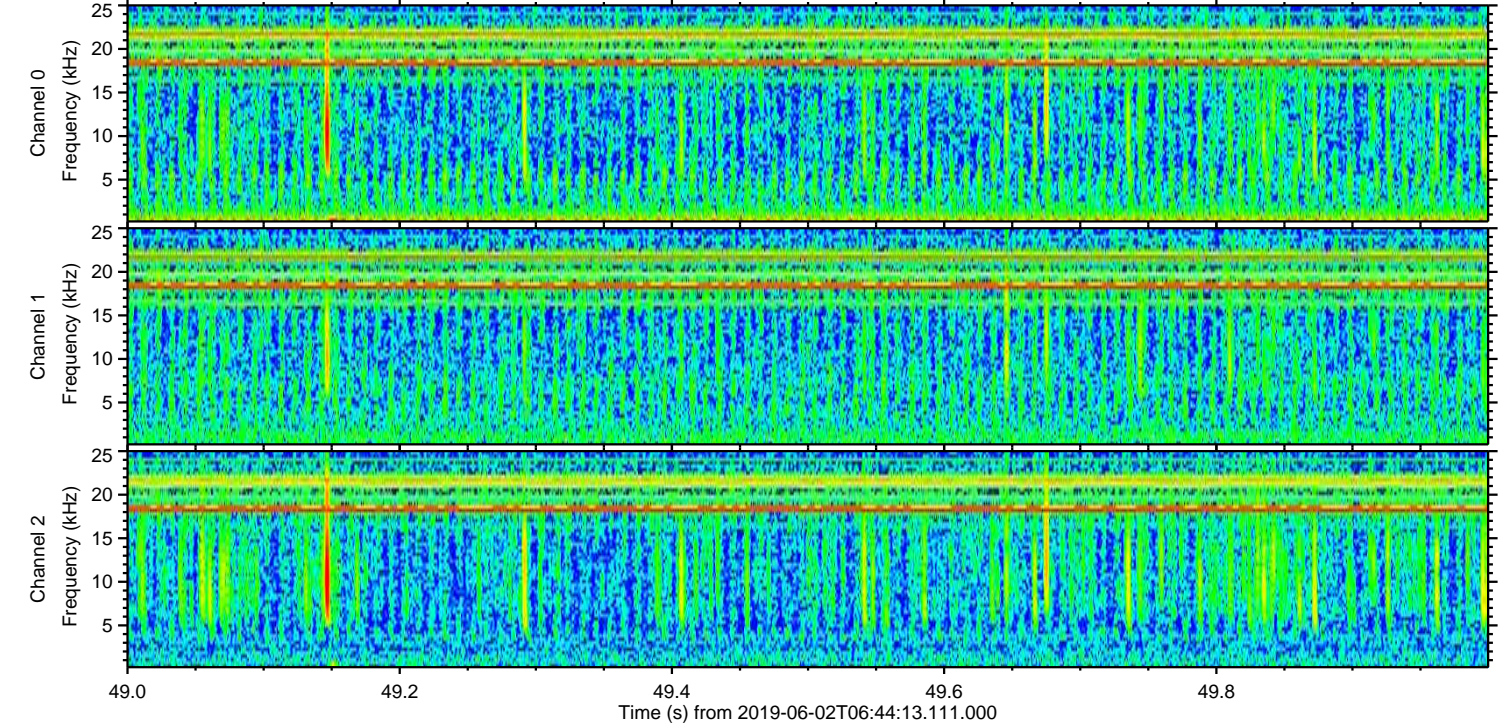
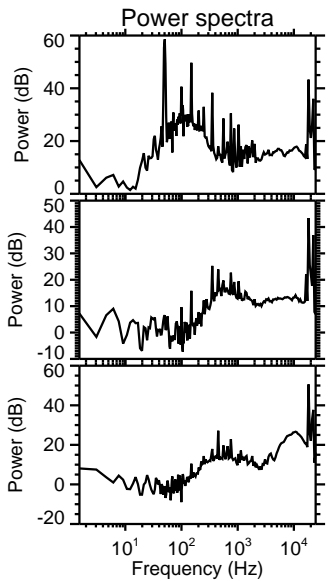
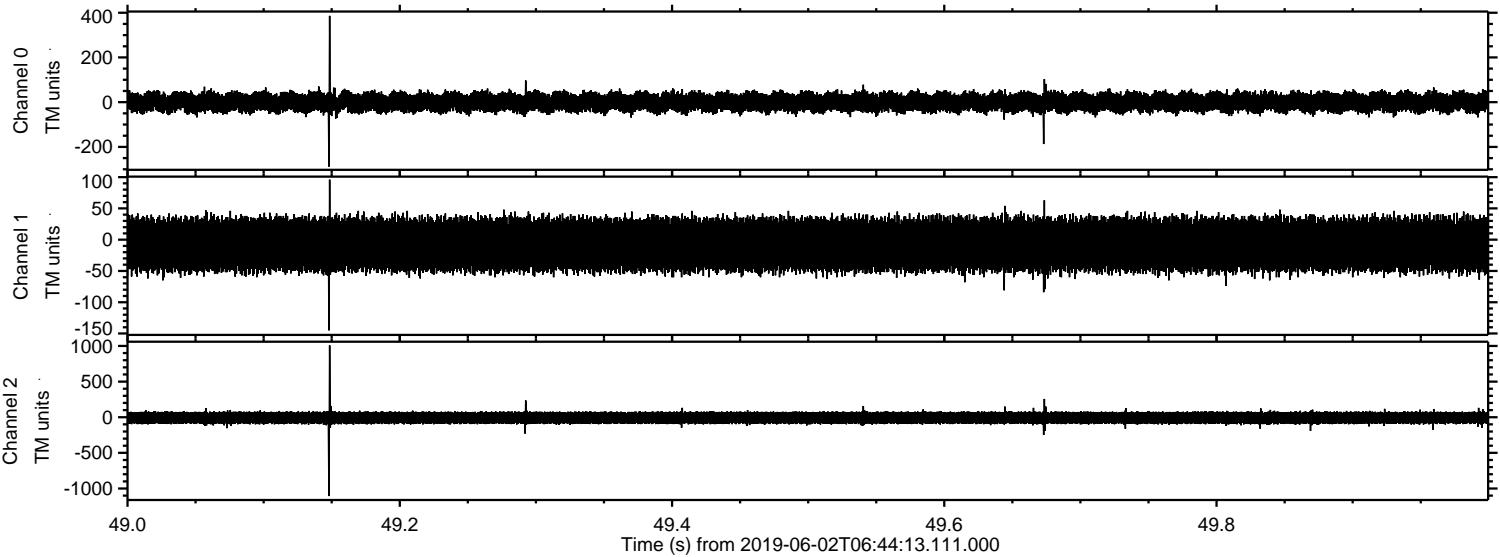


ELMAVAN 3D WAVEFORMS (Measured data sampled at 50 kHz) 51000 packets of 144 samples from 2019-06-02T06:44:13.111.000. Part 100/147

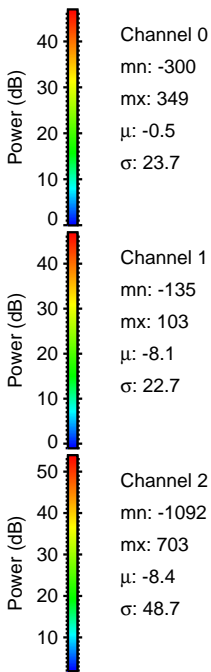
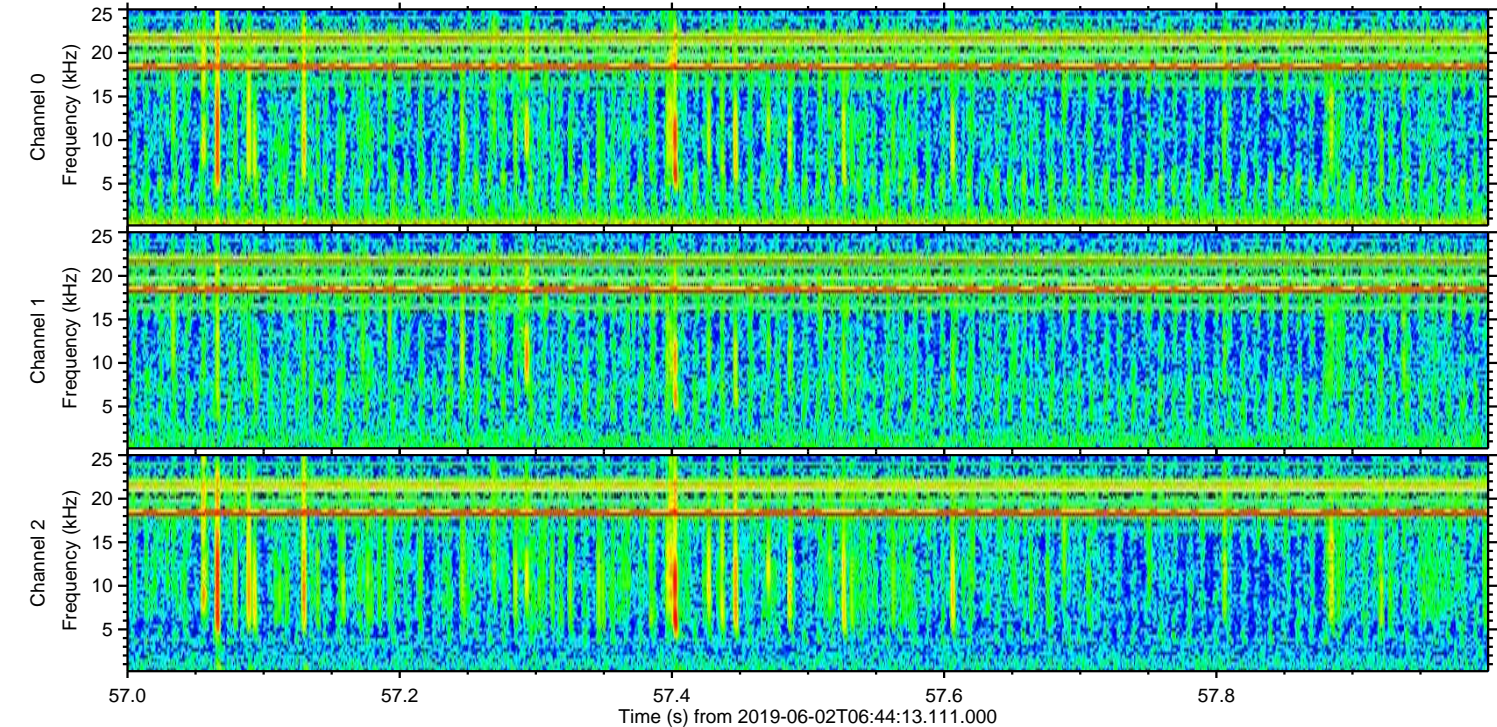
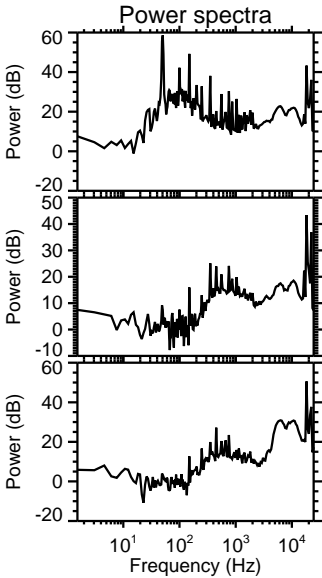
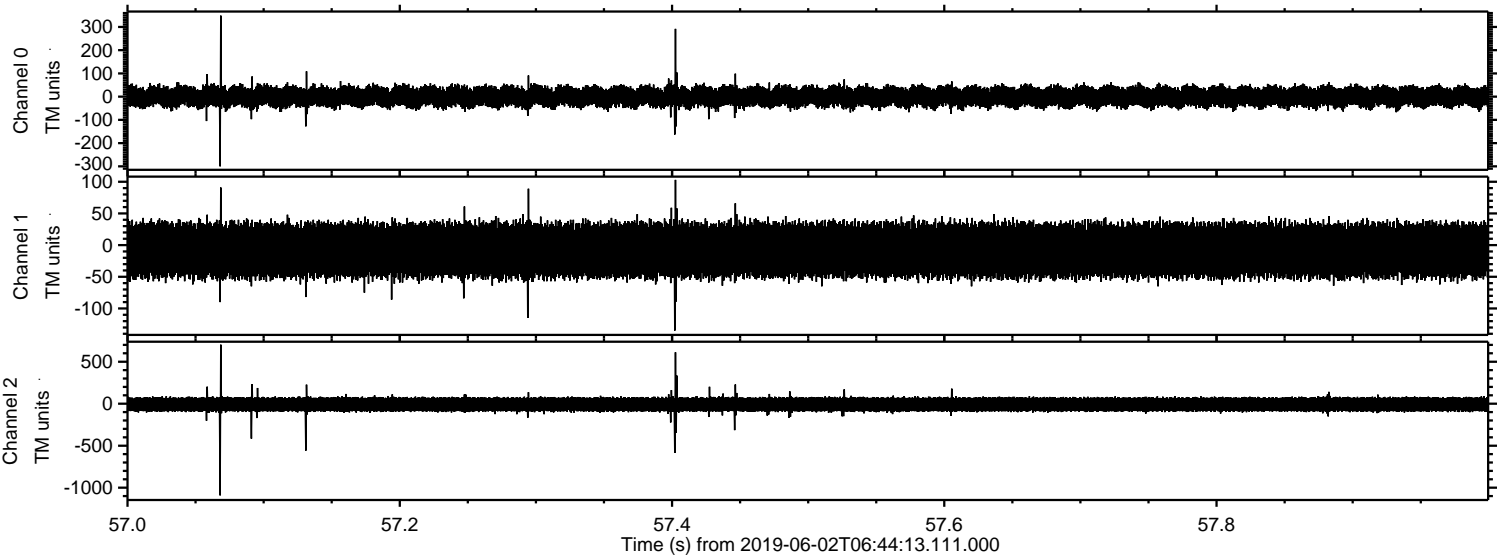
Processed Sun Jun 2 08:51:56 2019 by ELM ver.2012-10-06 from 001__elm20190602_064412__dat00.bin



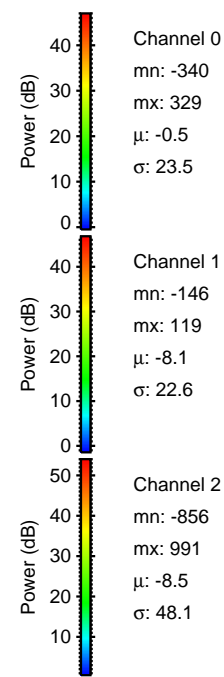
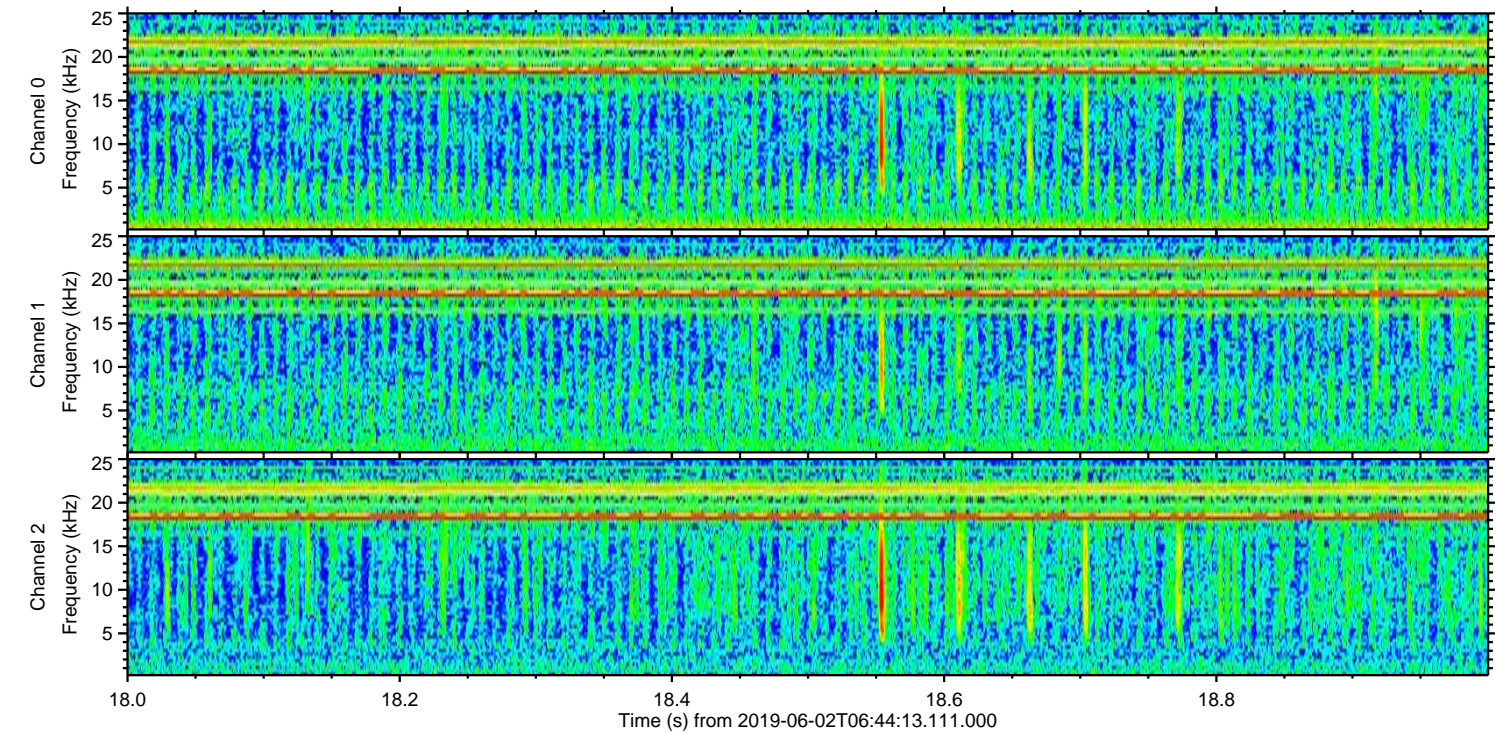
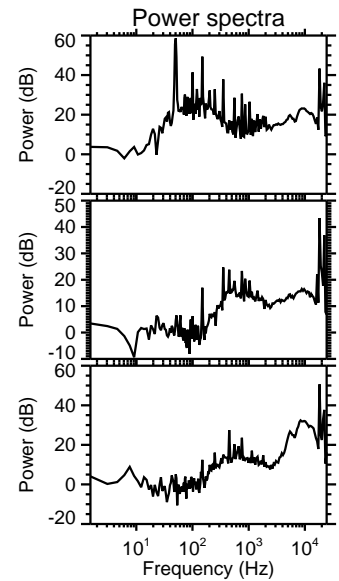
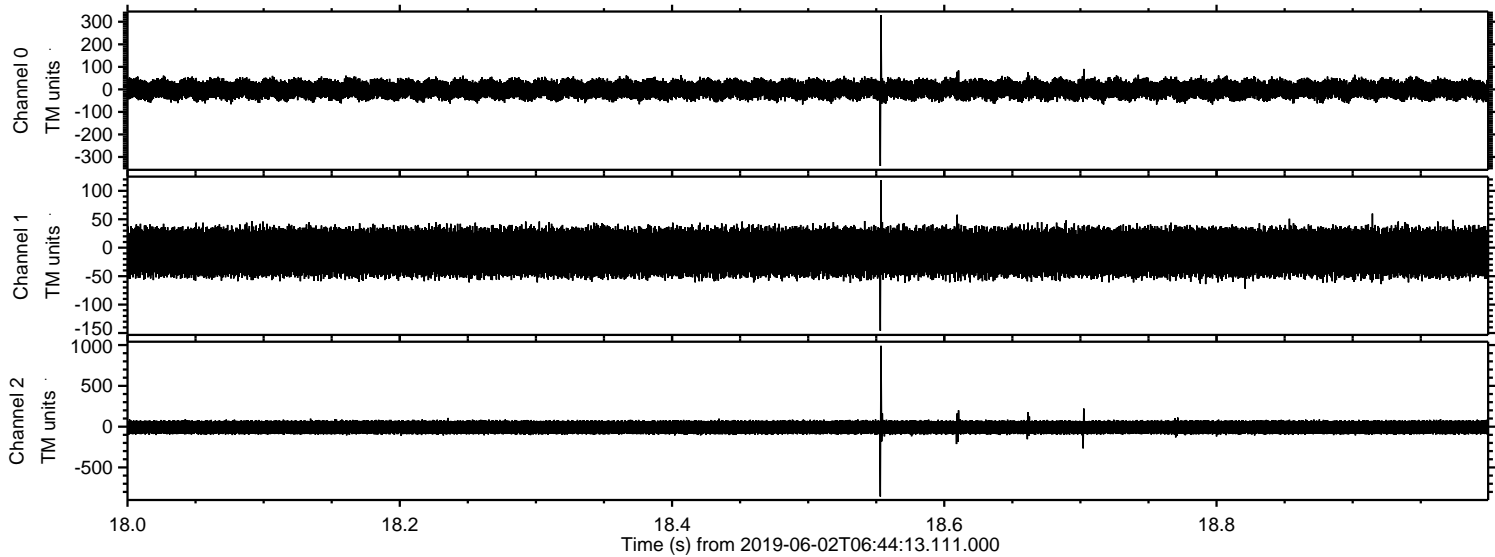
Processed Sun Jun 2 08:51:57 2019 by ELM ver.2012-10-06 from 001__elm20190602_064412__dat00.bin



Processed Sun Jun 2 08:51:58 2019 by ELM ver.2012-10-06 from 001__elm20190602_064412__dat00.bin



Processed Sun Jun 2 08:51:58 2019 by ELM ver.2012-10-06 from 001__elm20190602_064412__dat00.bin

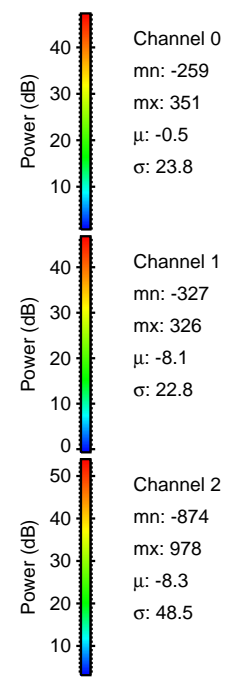
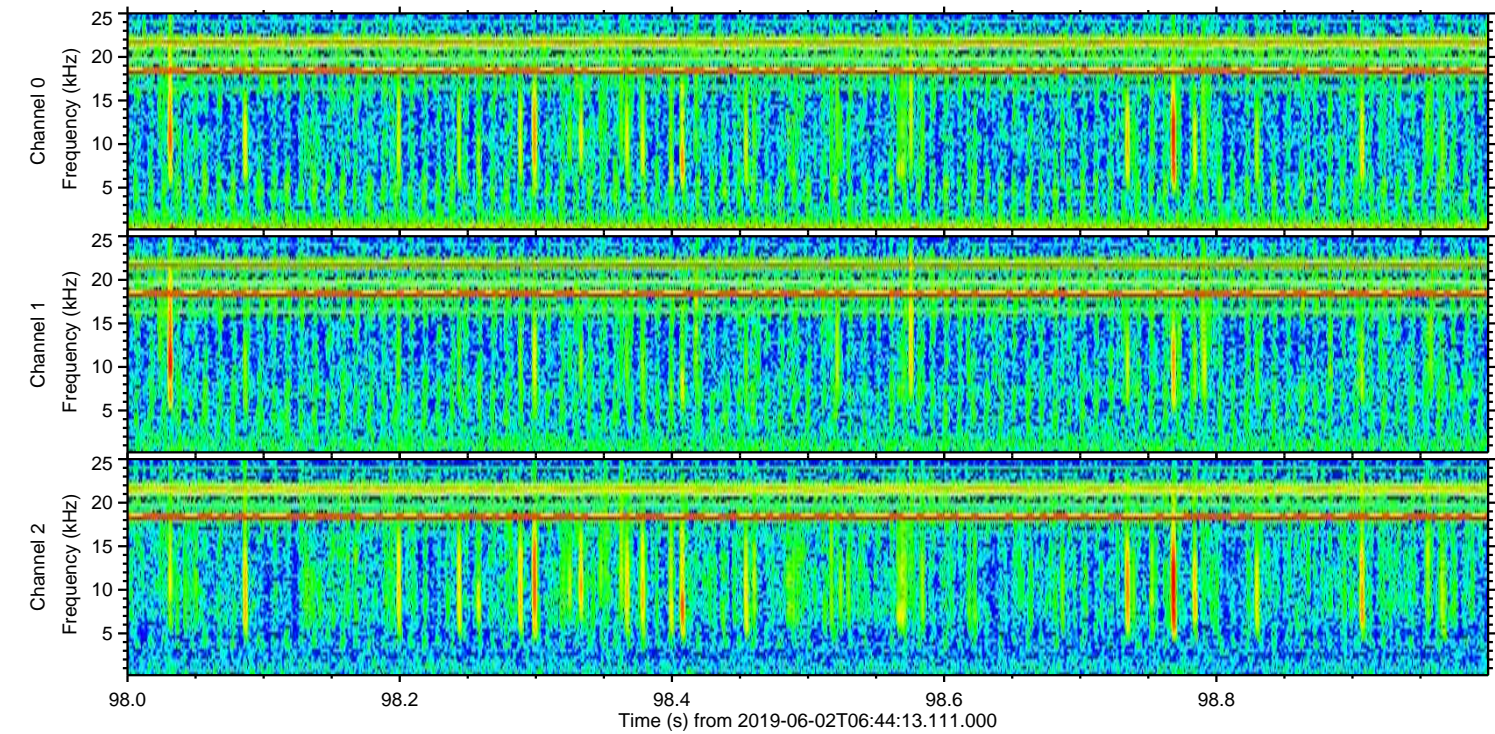
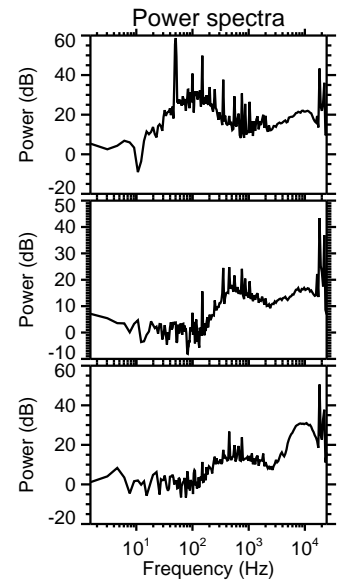
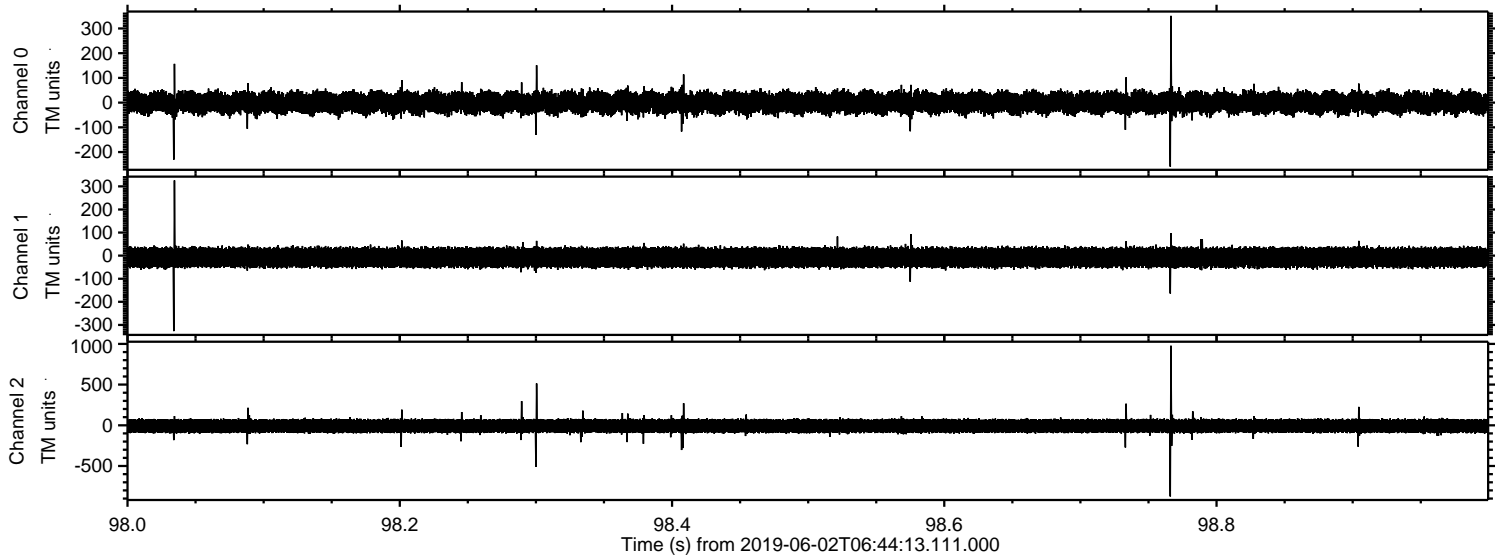


Channel 0
mn: -340
mx: 329
 μ : -0.5
 σ : 23.5

Channel 1
mn: -146
mx: 119
 μ : -8.1
 σ : 22.6

Channel 2
mn: -856
mx: 991
 μ : -8.5
 σ : 48.1

Processed Sun Jun 2 08:51:59 2019 by ELM ver.2012-10-06 from 001__elm20190602_064412__dat00.bin



Processed Sun Jun 2 08:52:00 2019 by ELM ver.2012-10-06 from 001__elm20190602_064412__dat00.bin

