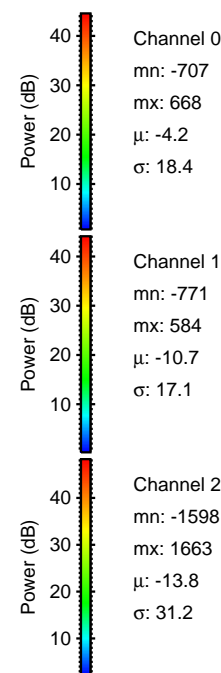
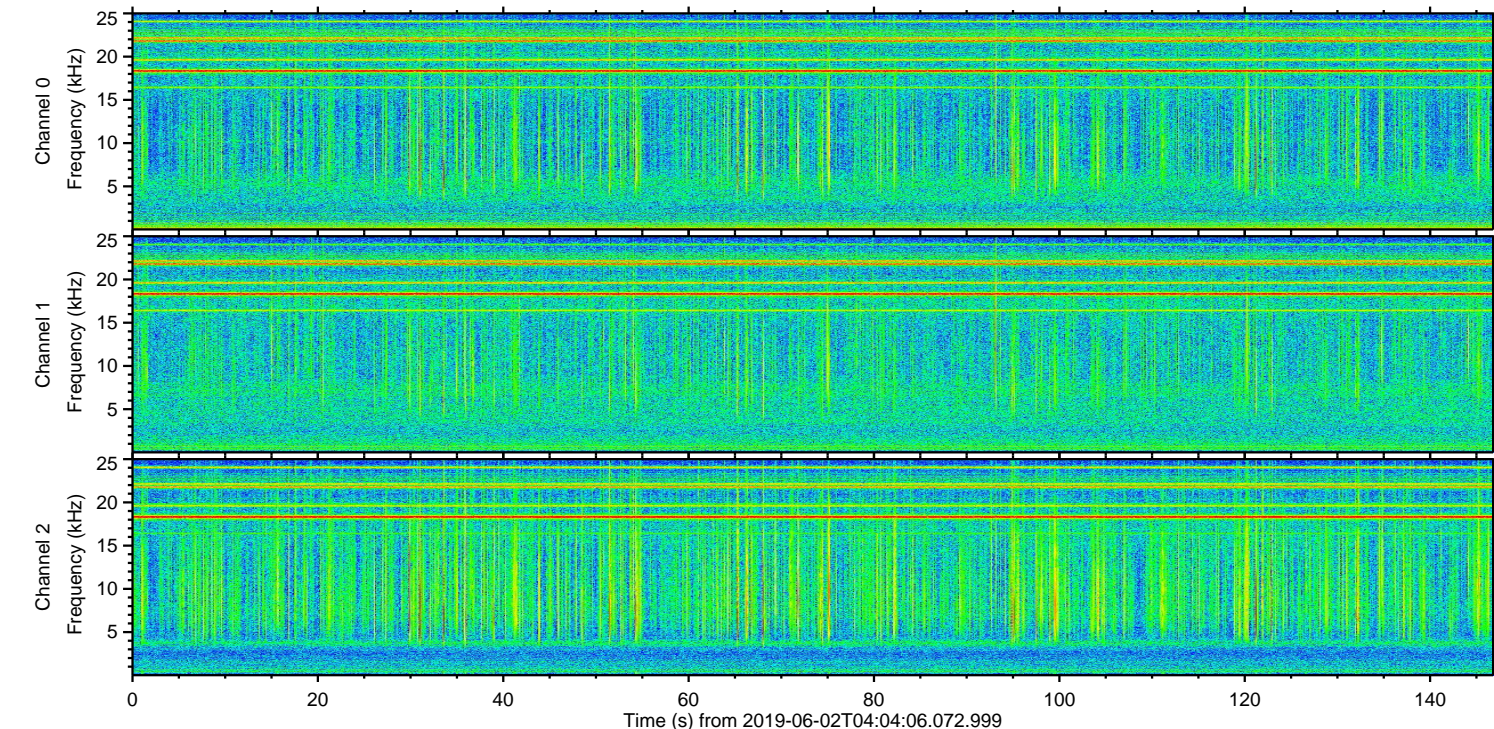
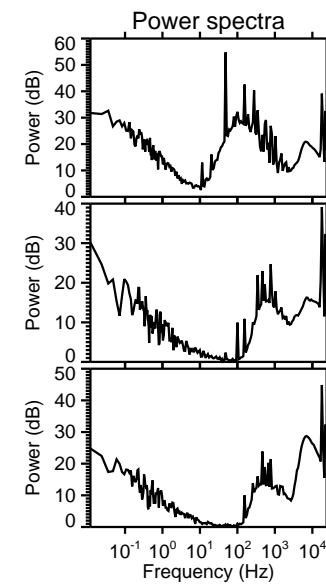
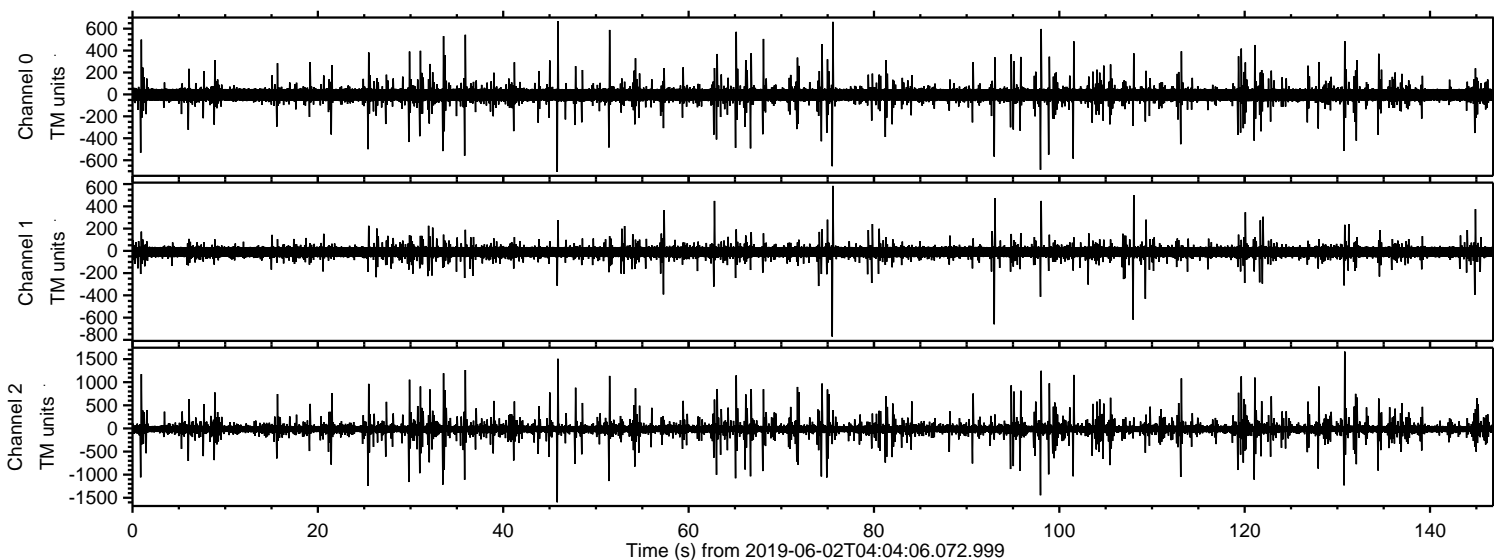


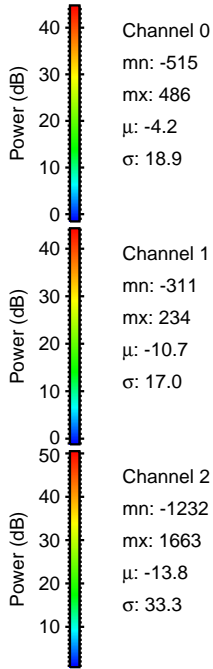
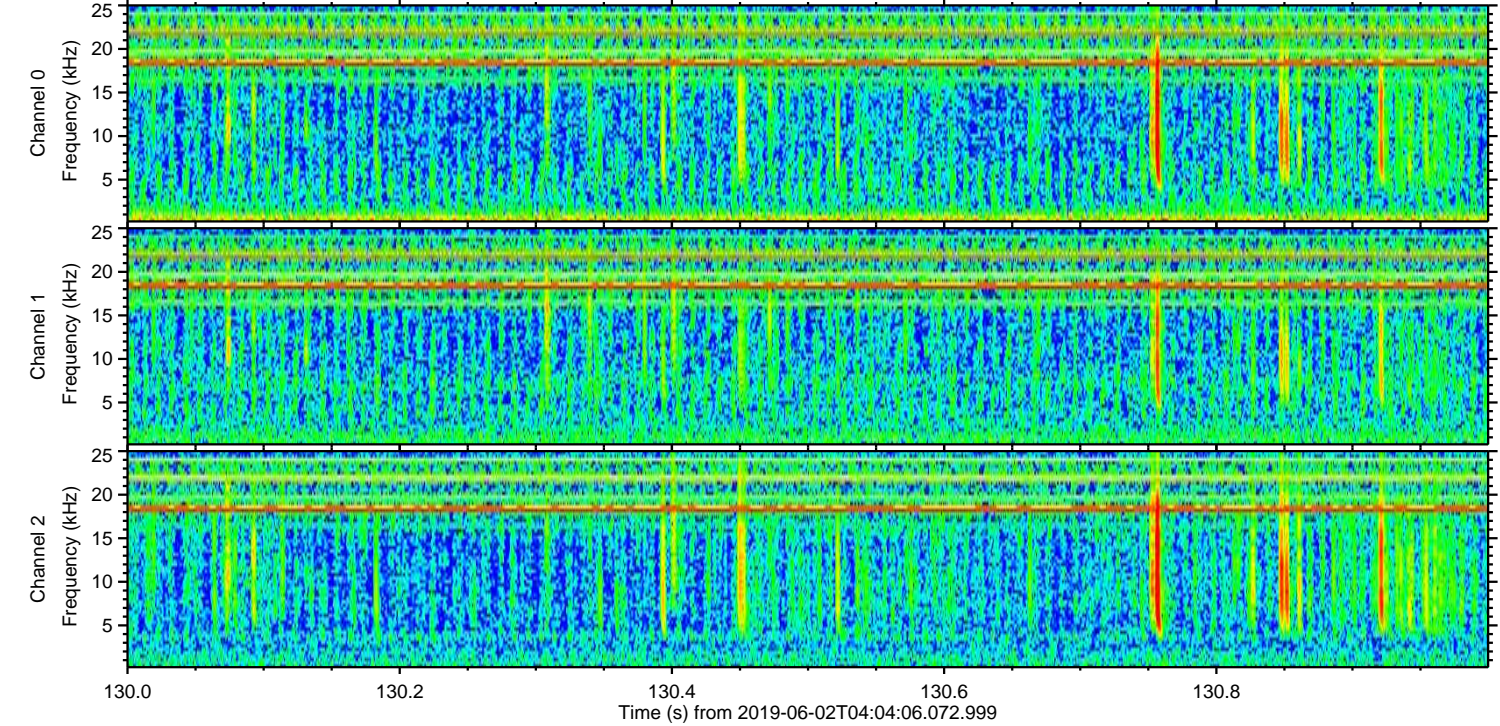
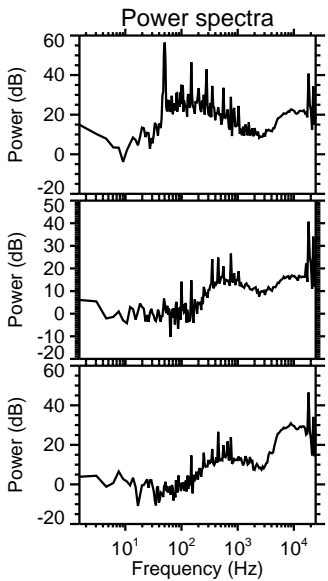
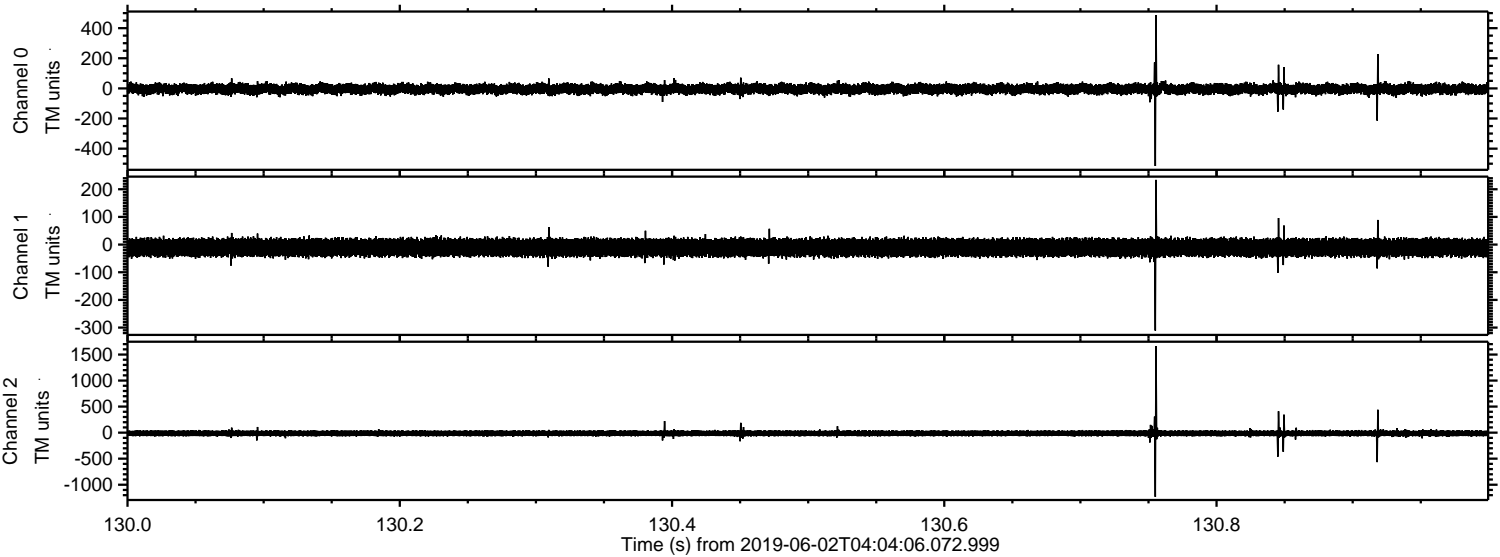
ELMAVAN 3D WAVEFORMS (Measured data sampled at 50 kHz) 51000 packets of 144 samples from 2019-06-02T04:04:06.072.999.

Processed Sun Jun 2 06:11:59 2019 by ELM ver.2012-10-06 from 001__elm20190602_040405__dat00.bin

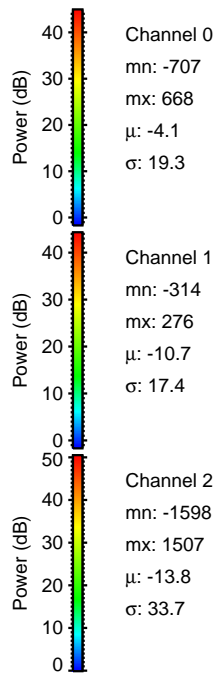
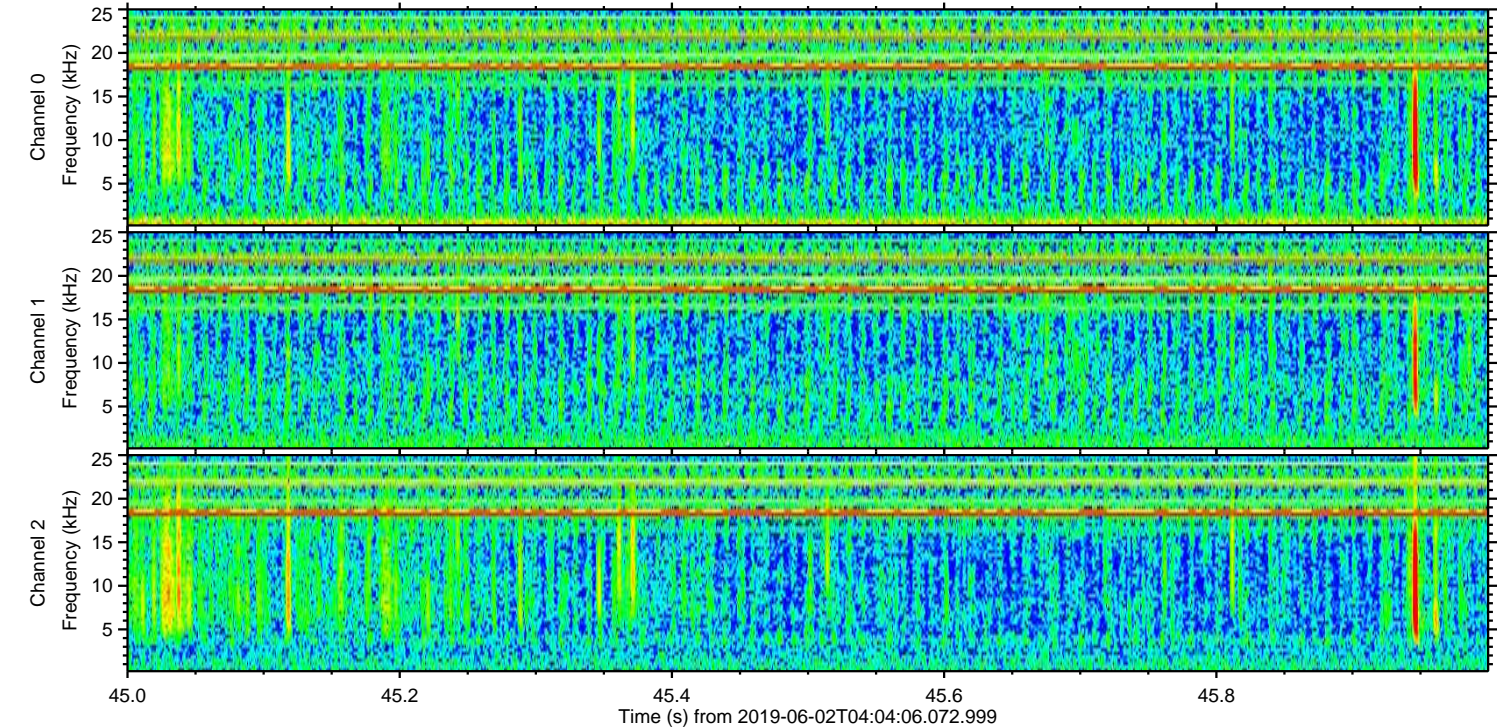
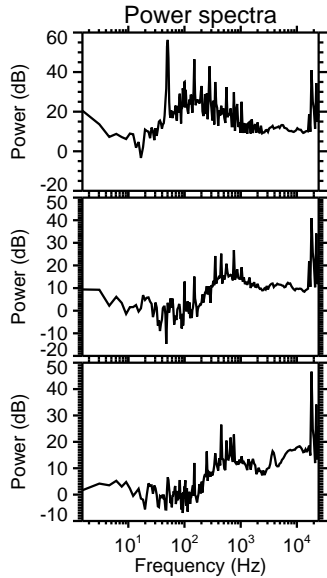
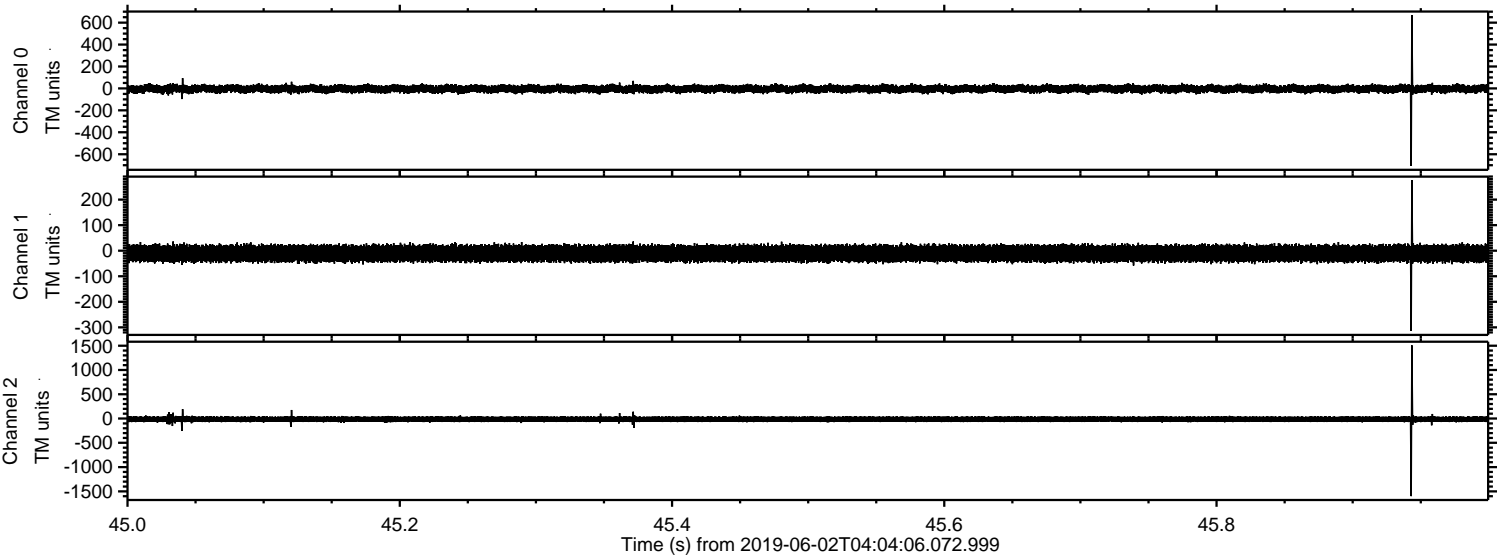


ELMAVAN 3D WAVEFORMS (Measured data sampled at 50 kHz) 51000 packets of 144 samples from 2019-06-02T04:04:06.072.999. Part 131/147

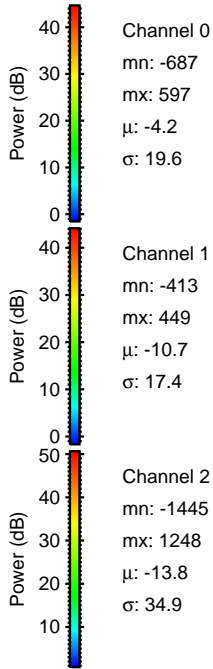
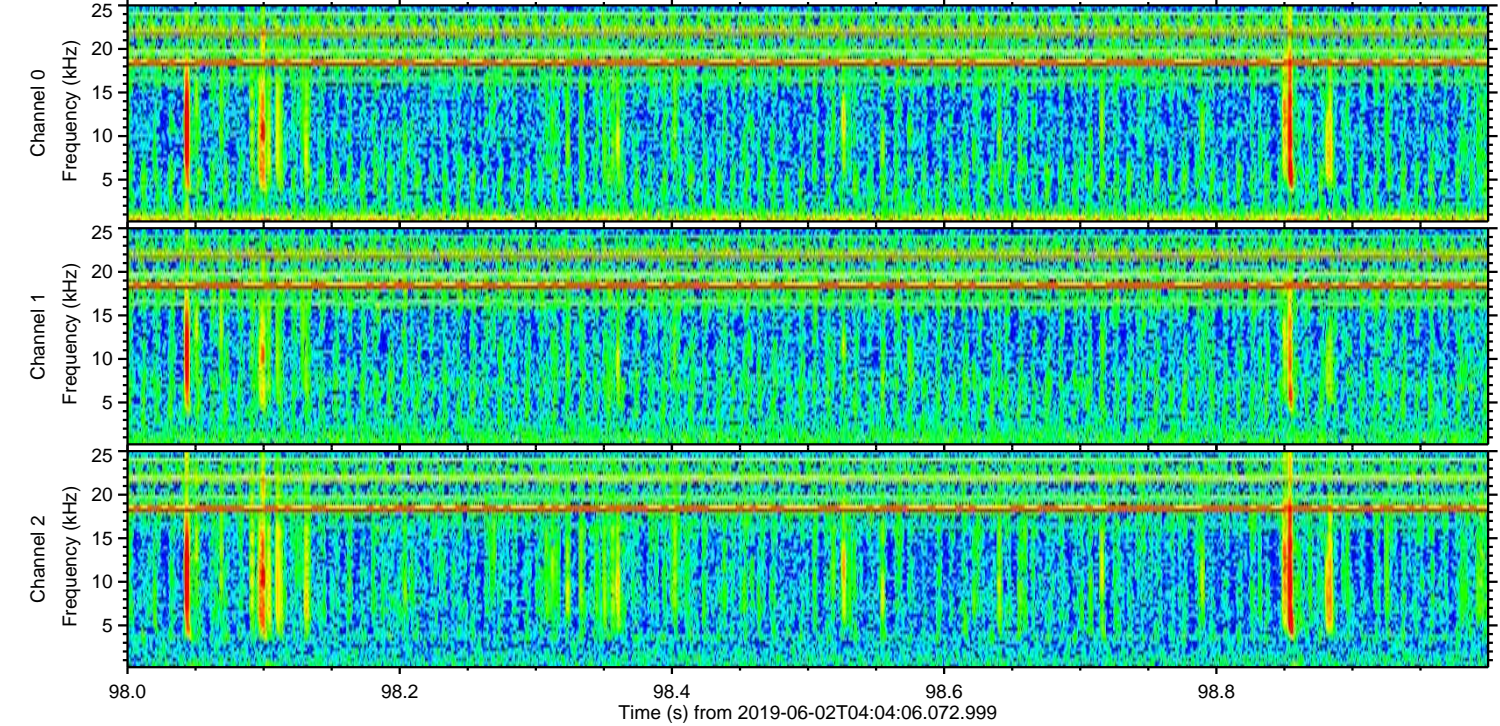
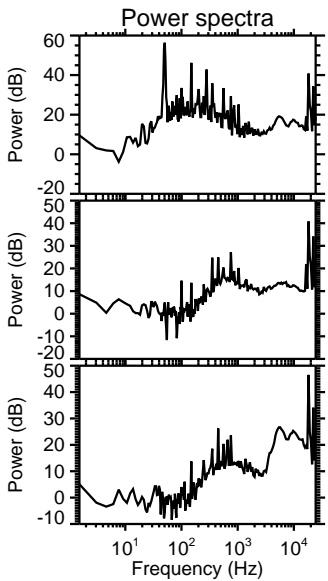
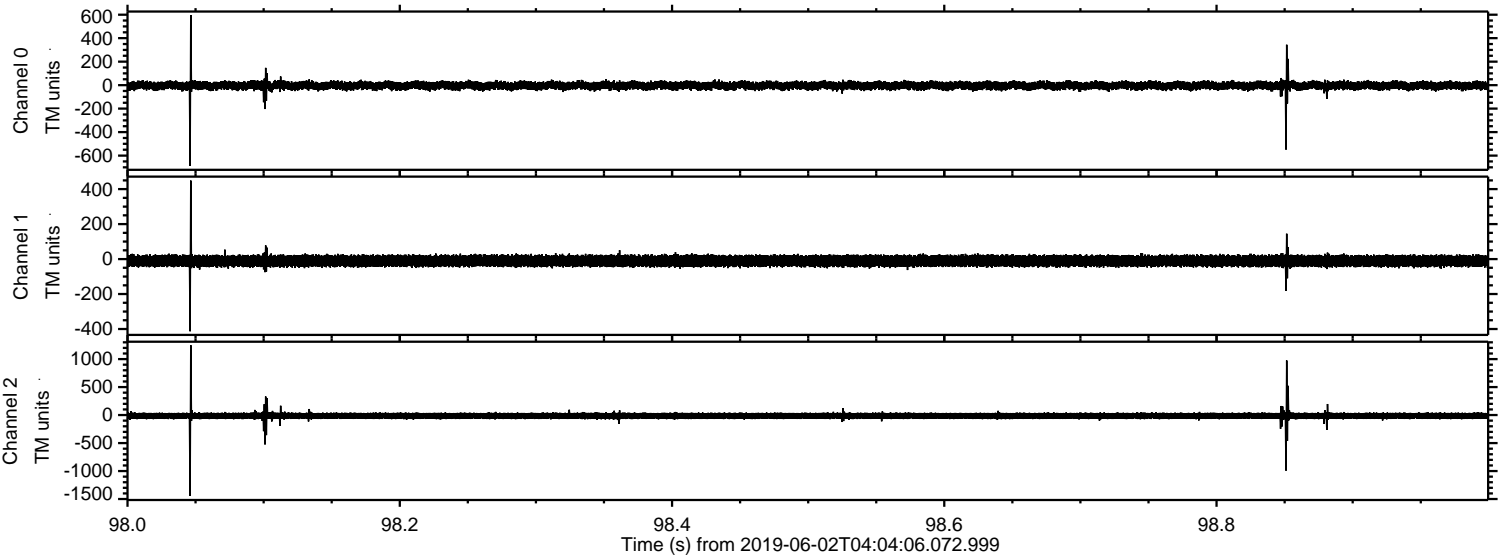
Processed Sun Jun 2 06:12:04 2019 by ELM ver.2012-10-06 from 001__elm20190602_040405__dat00.bin



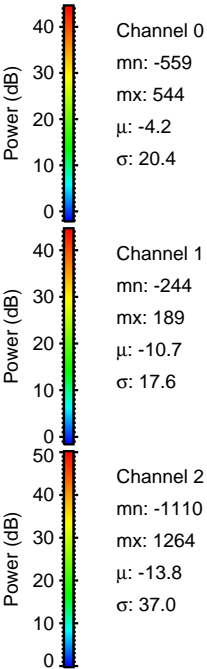
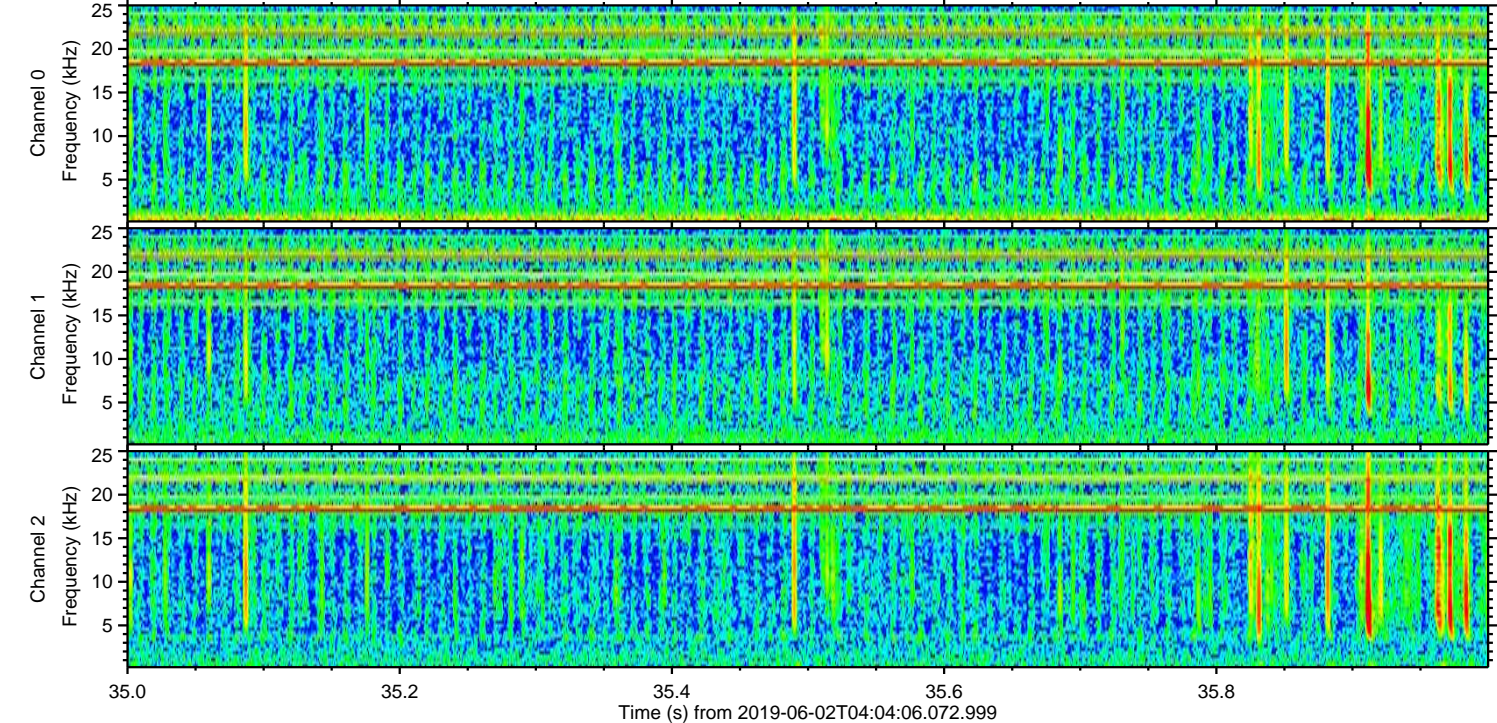
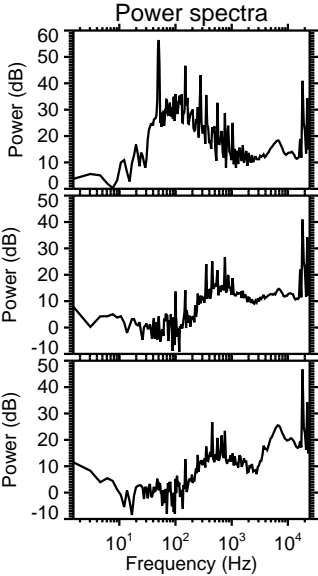
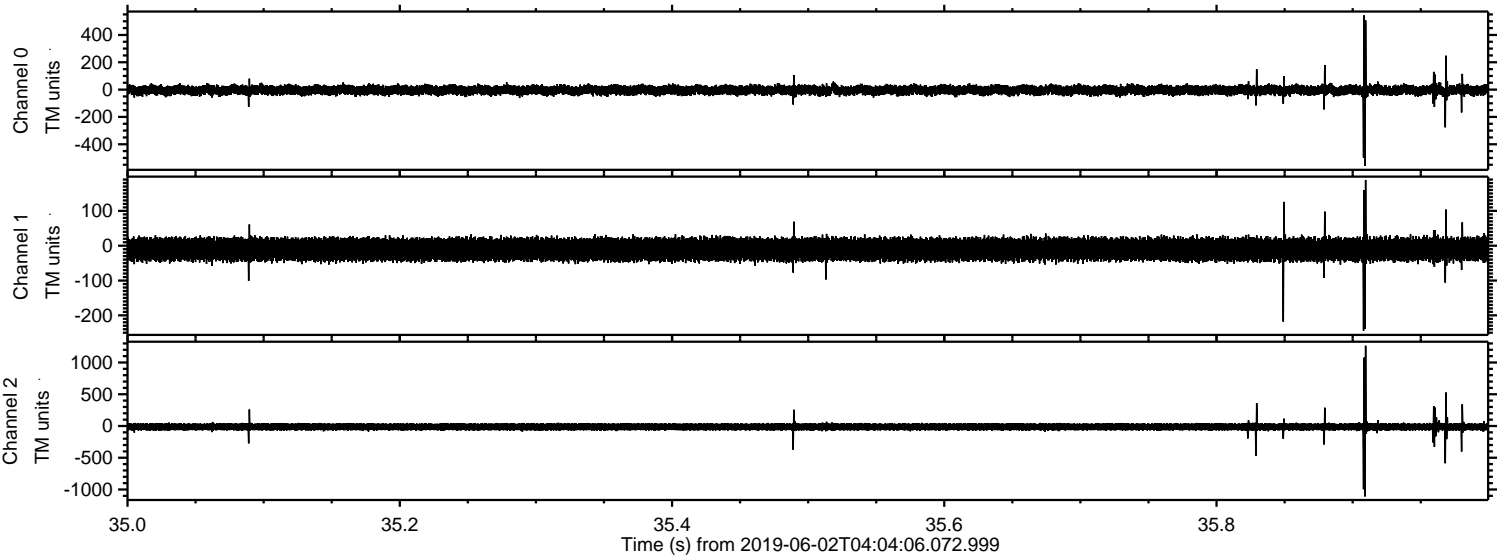
Processed Sun Jun 2 06:12:05 2019 by ELM ver.2012-10-06 from 001__elm20190602_040405__dat00.bin



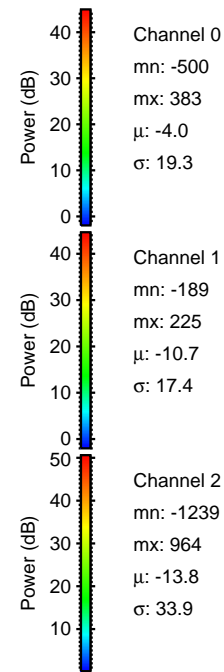
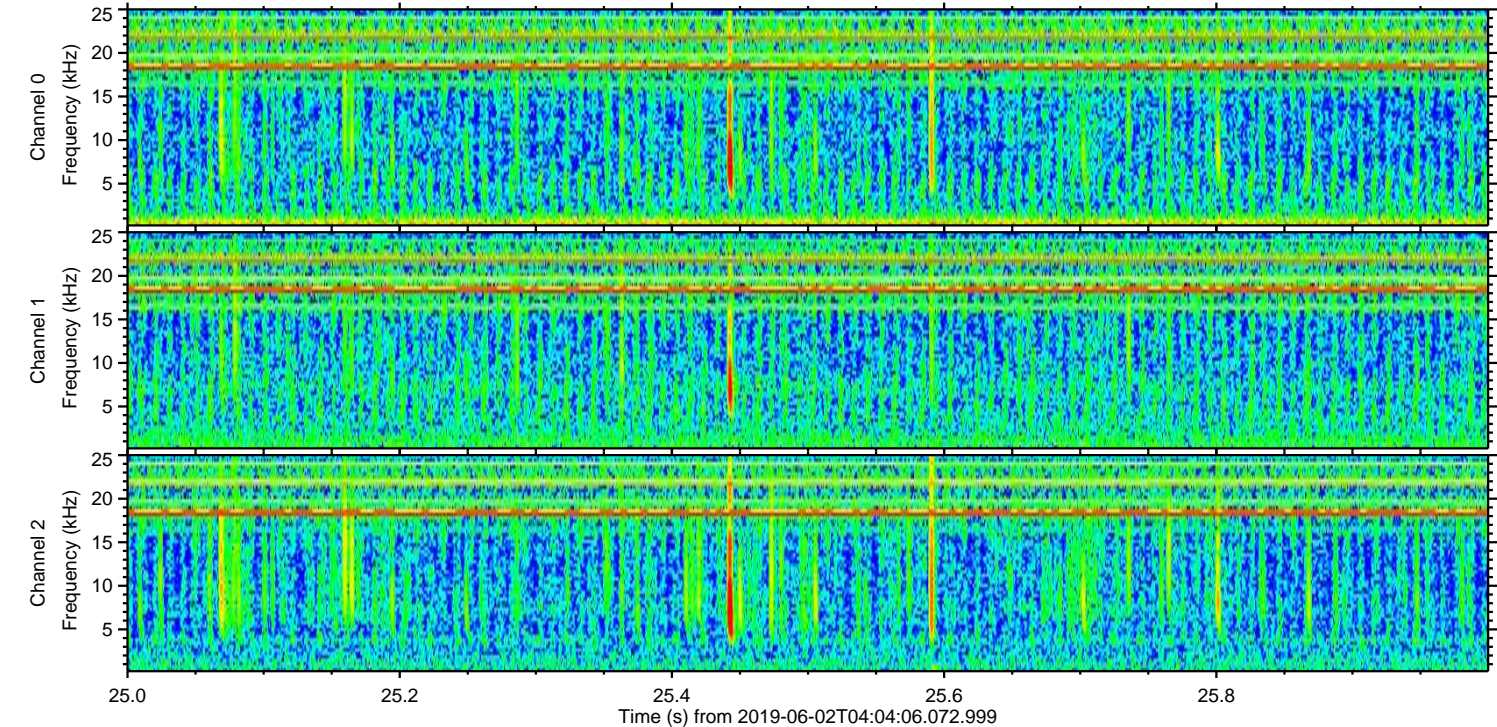
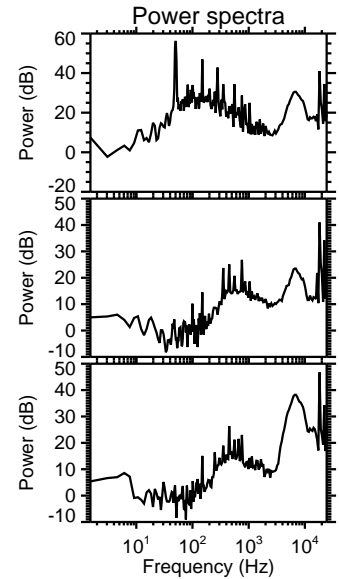
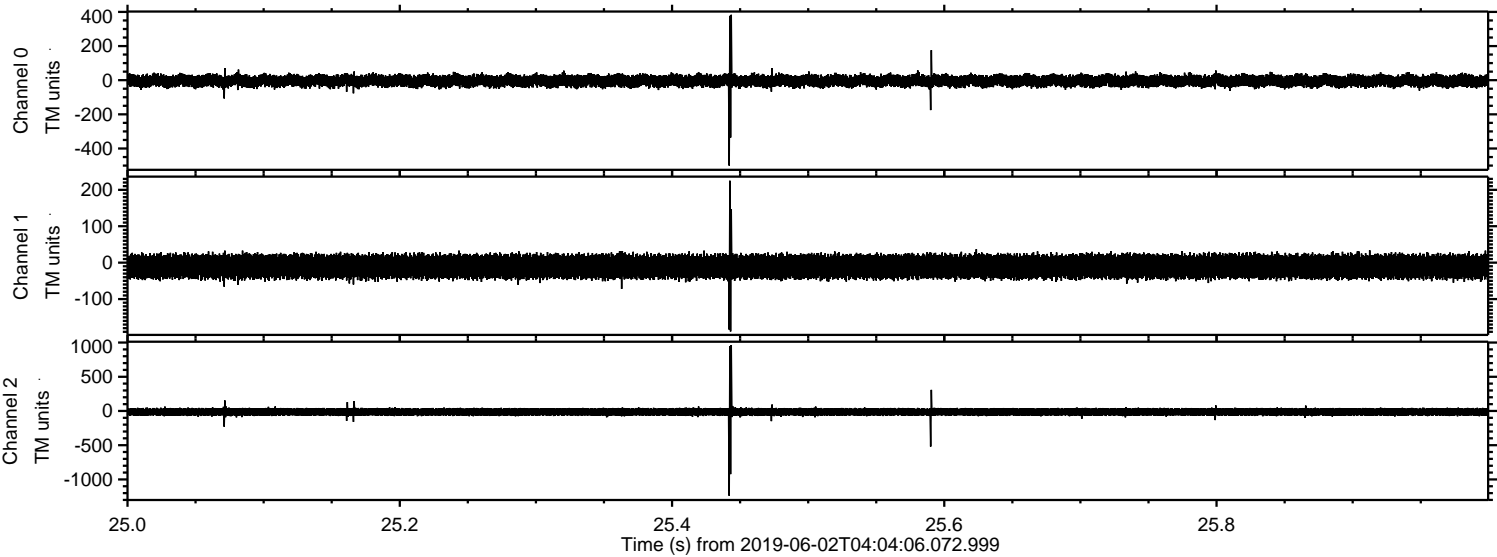
Processed Sun Jun 2 06:12:06 2019 by ELM ver.2012-10-06 from 001__elm20190602_040405__dat00.bin



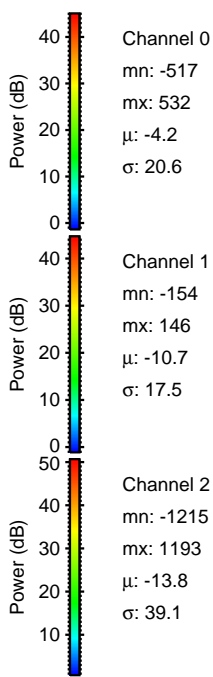
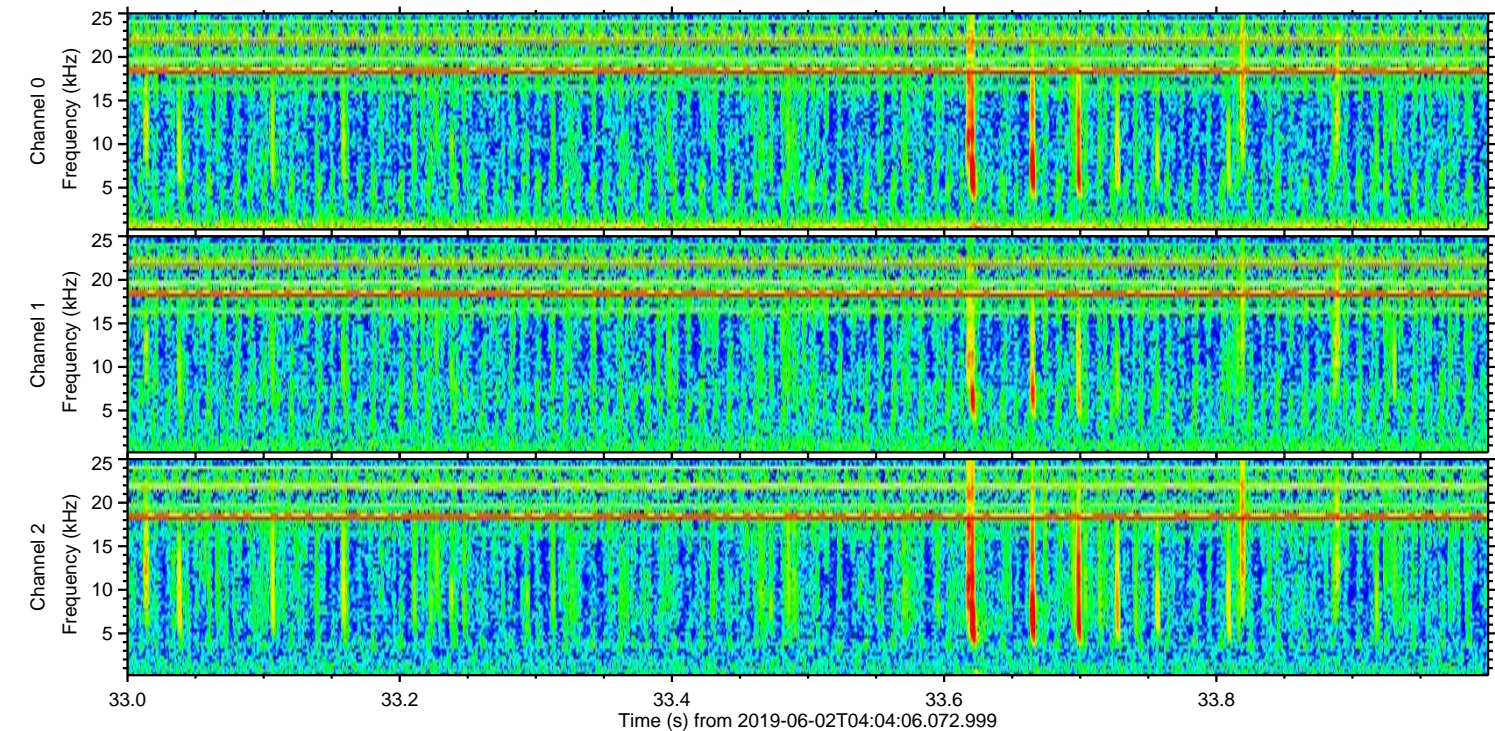
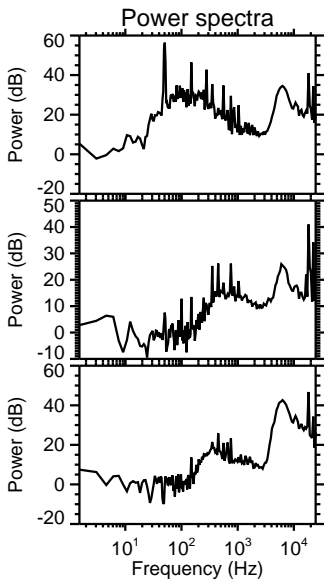
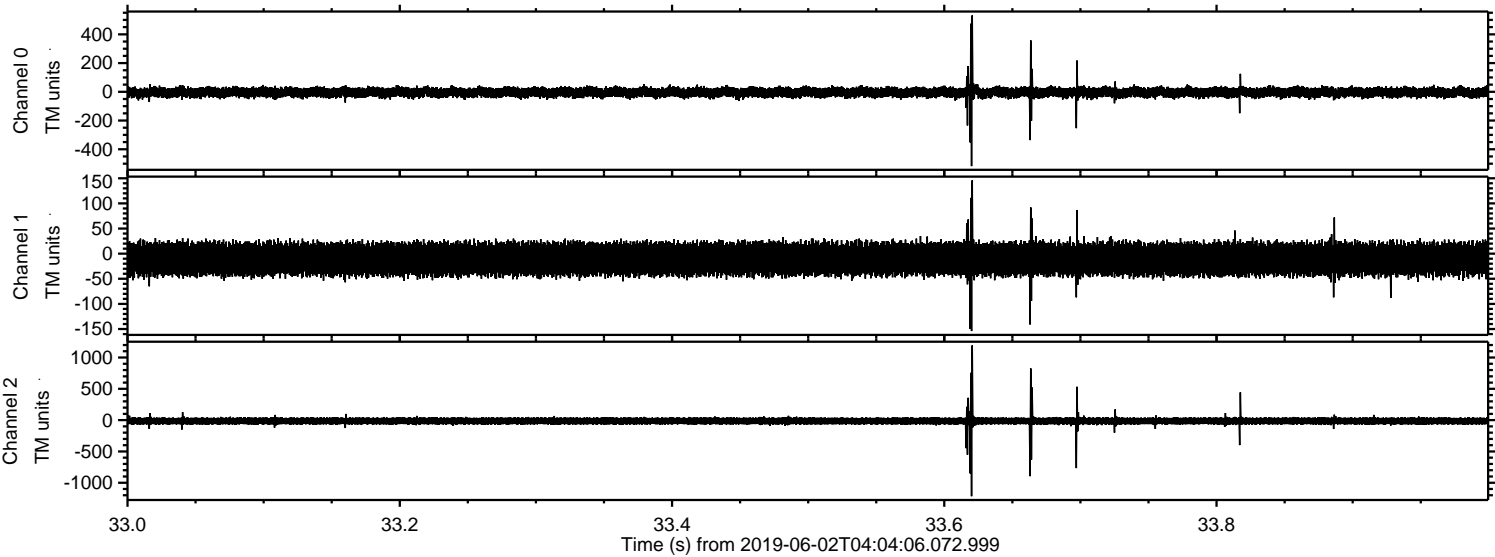
Processed Sun Jun 2 06:12:06 2019 by ELM ver.2012-10-06 from 001__elm20190602_040405__dat00.bin



Processed Sun Jun 2 06:12:07 2019 by ELM ver.2012-10-06 from 001__elm20190602_040405__dat00.bin

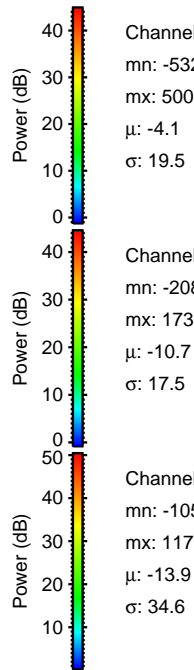
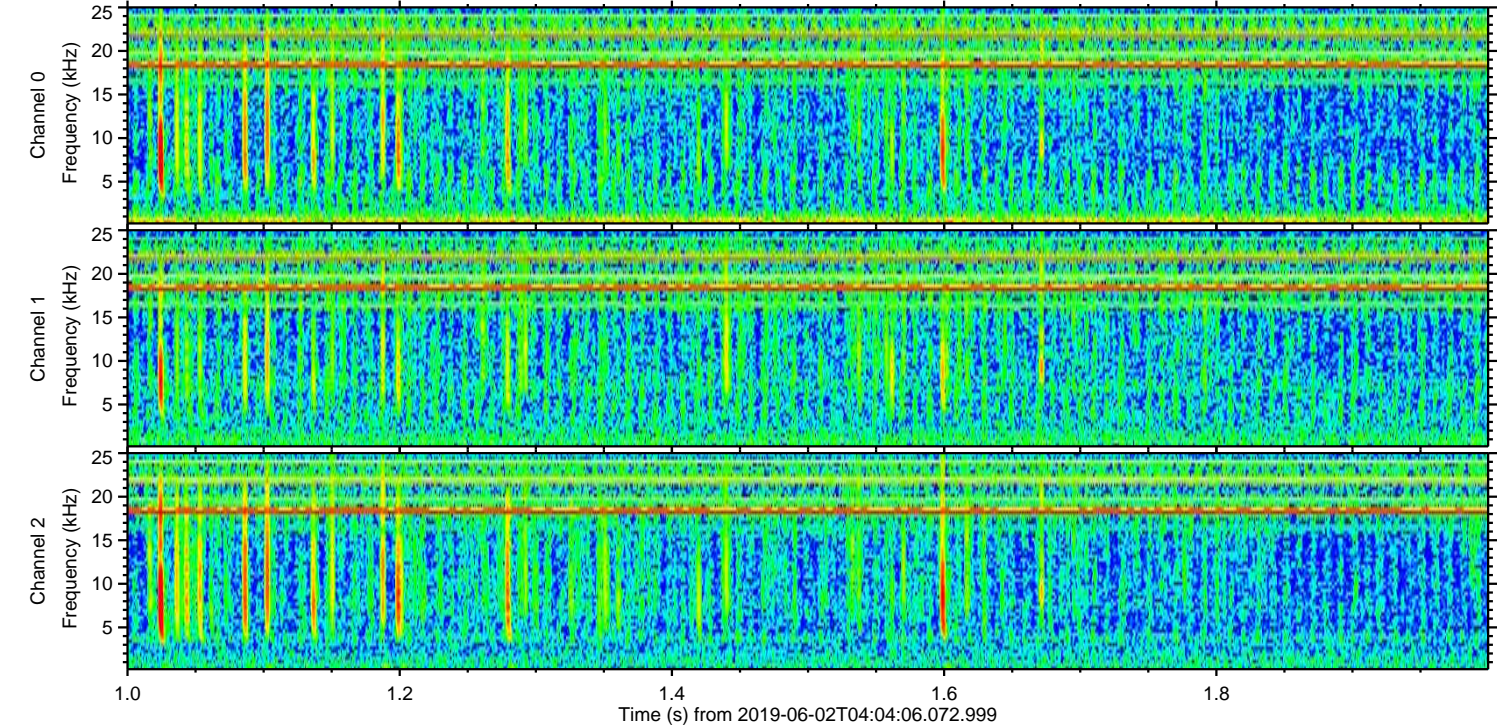
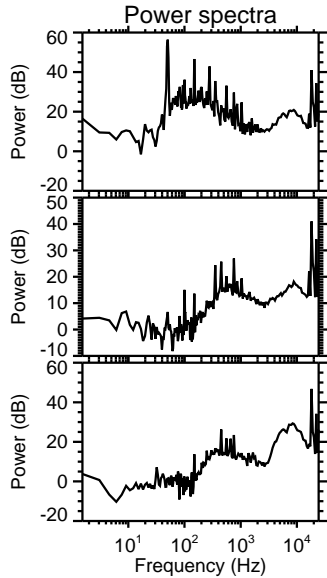
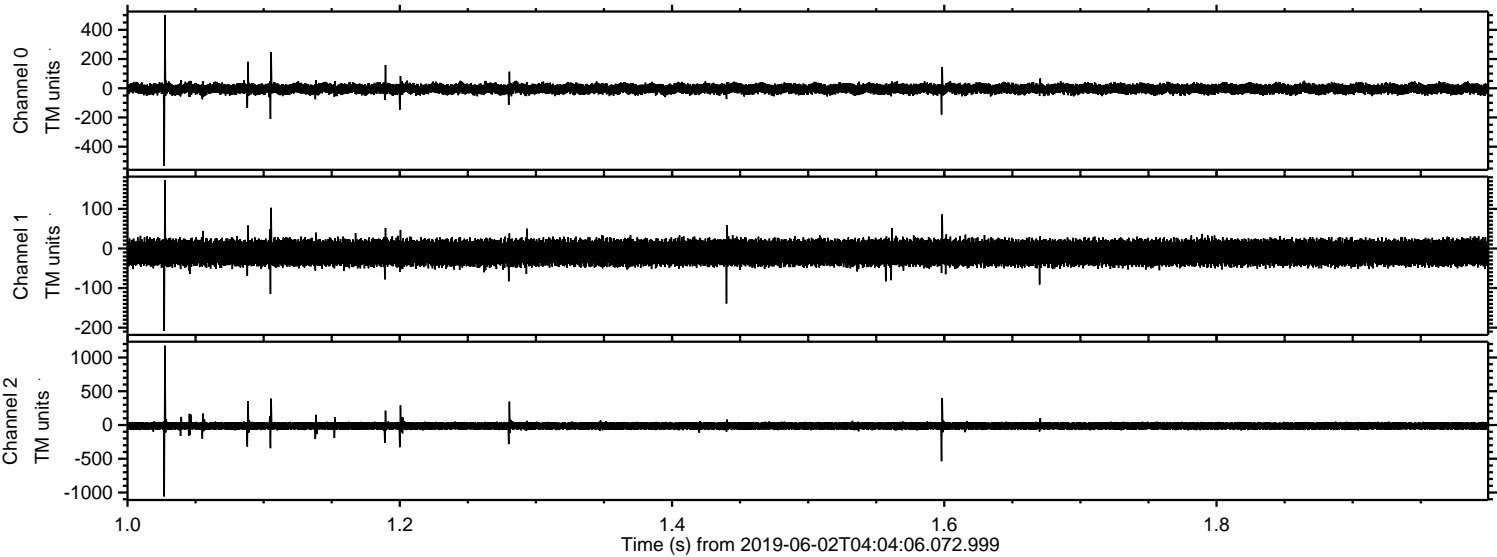


Processed Sun Jun 2 06:12:07 2019 by ELM ver.2012-10-06 from 001__elm20190602_040405__dat00.bin

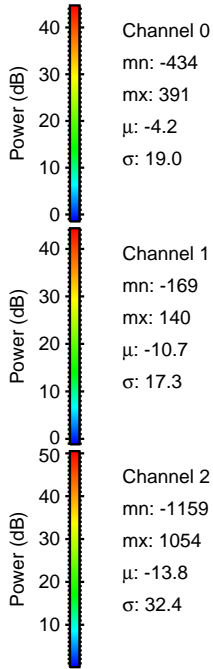
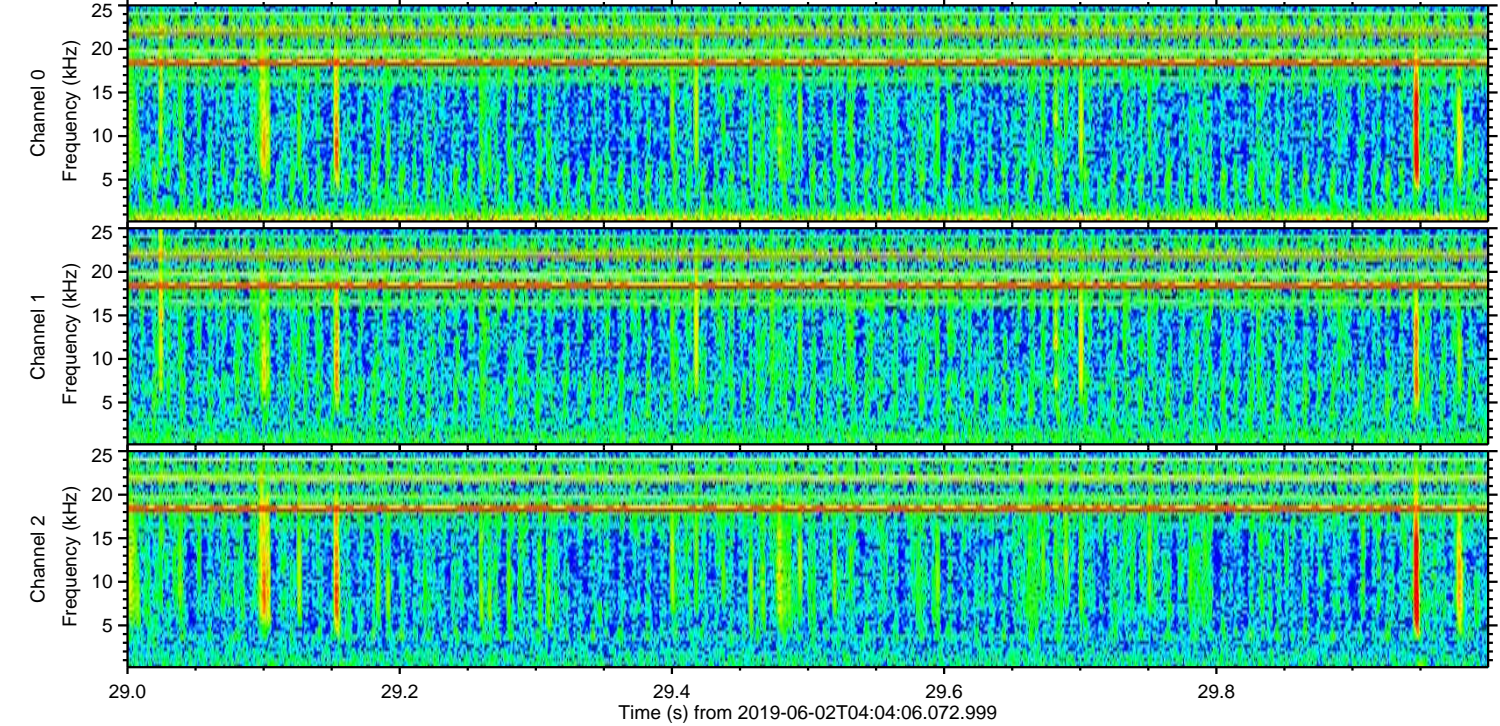
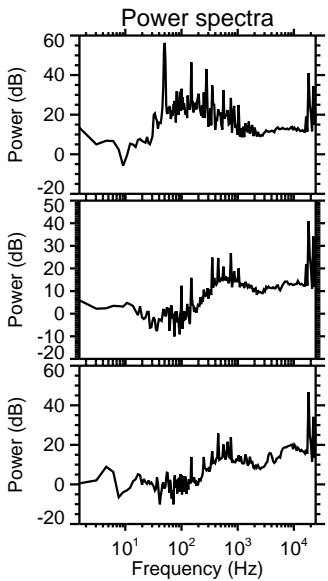
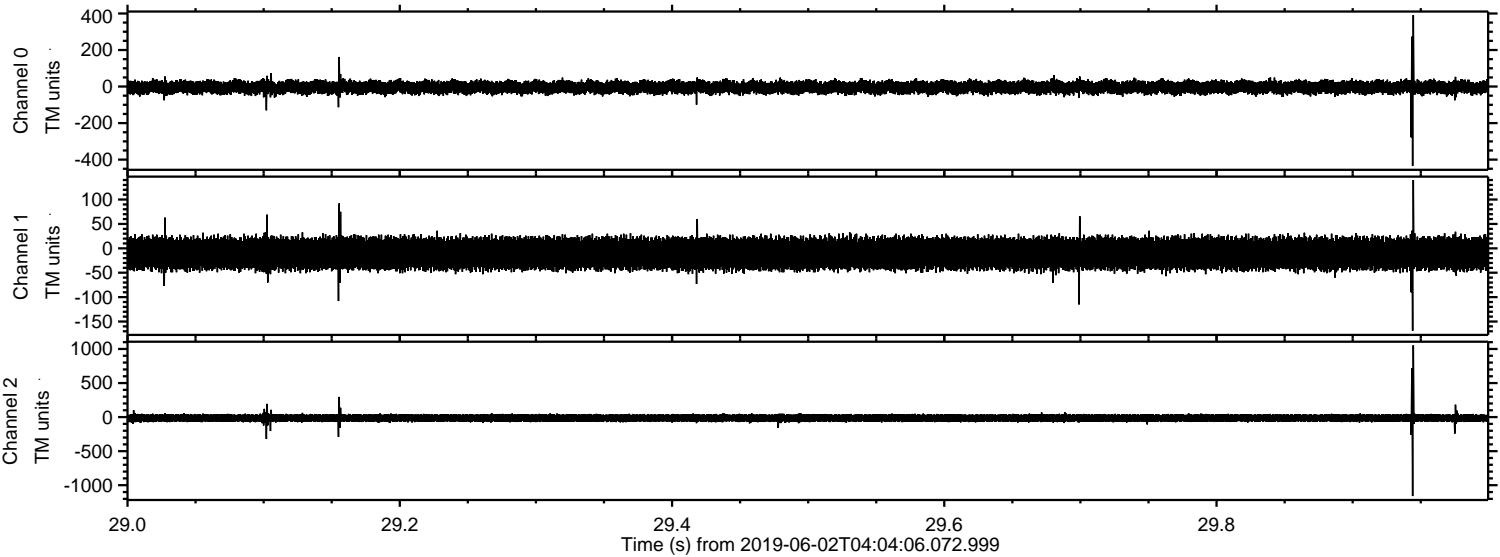


ELMAVAN 3D WAVEFORMS (Measured data sampled at 50 kHz) 51000 packets of 144 samples from 2019-06-02T04:04:06.072.999. Part 2/147

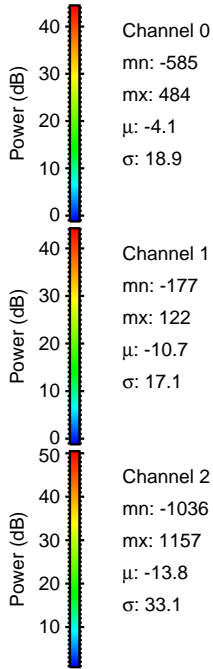
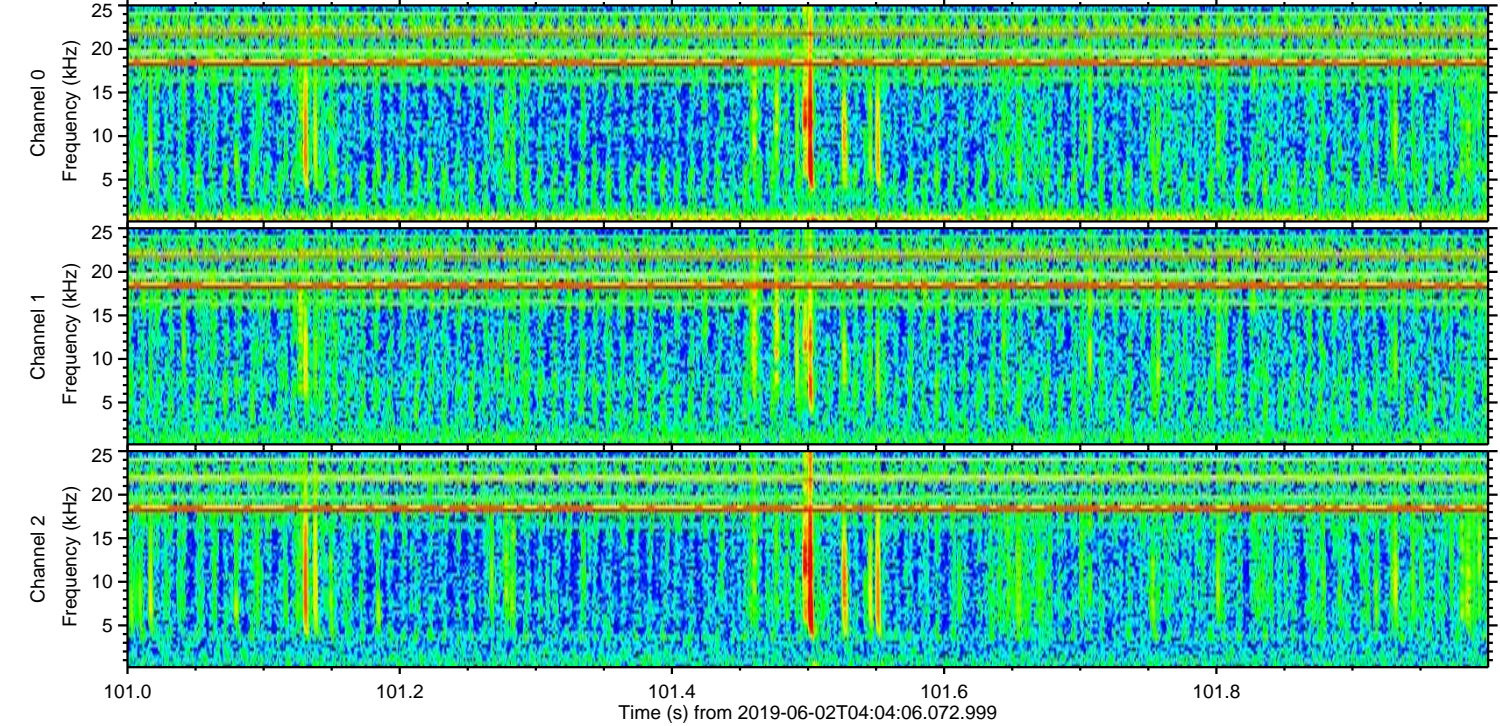
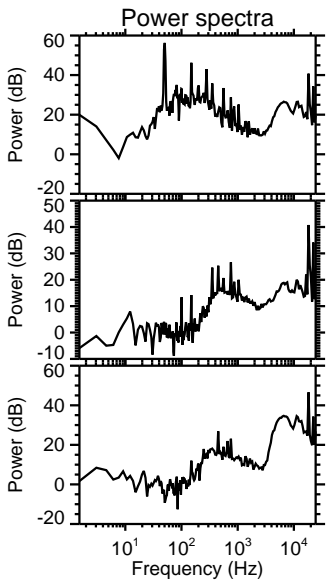
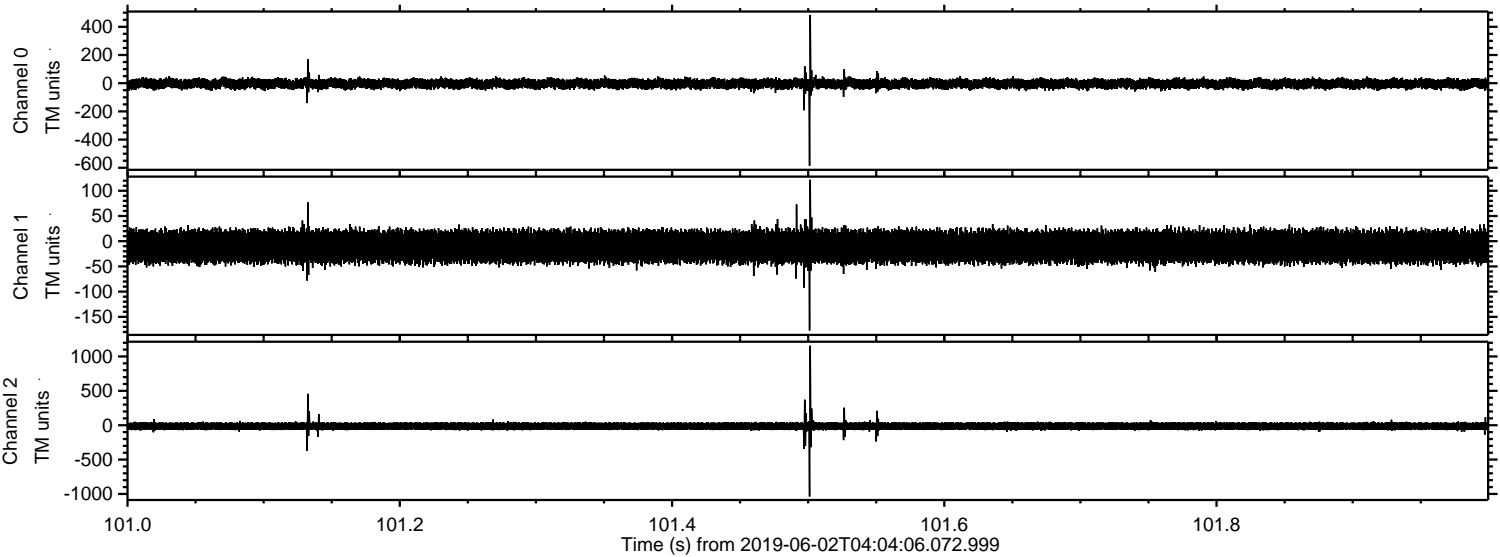
Processed Sun Jun 2 06:12:08 2019 by ELM ver.2012-10-06 from 001__elm20190602_040405__dat00.bin



Processed Sun Jun 2 06:12:09 2019 by ELM ver.2012-10-06 from 001__elm20190602_040405__dat00.bin



Processed Sun Jun 2 06:12:09 2019 by ELM ver.2012-10-06 from 001__elm20190602_040405__dat00.bin



Channel 0
mn: -585
mx: 484
 μ : -4.1
 σ : 18.9

Channel 1
mn: -177
mx: 122
 μ : -10.7
 σ : 17.1

Channel 2
mn: -1036
mx: 1157
 μ : -13.8
 σ : 33.1

Processed Sun Jun 2 06:12:10 2019 by ELM ver.2012-10-06 from 001__elm20190602_040405__dat00.bin

