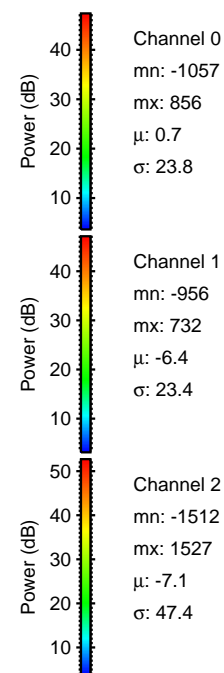
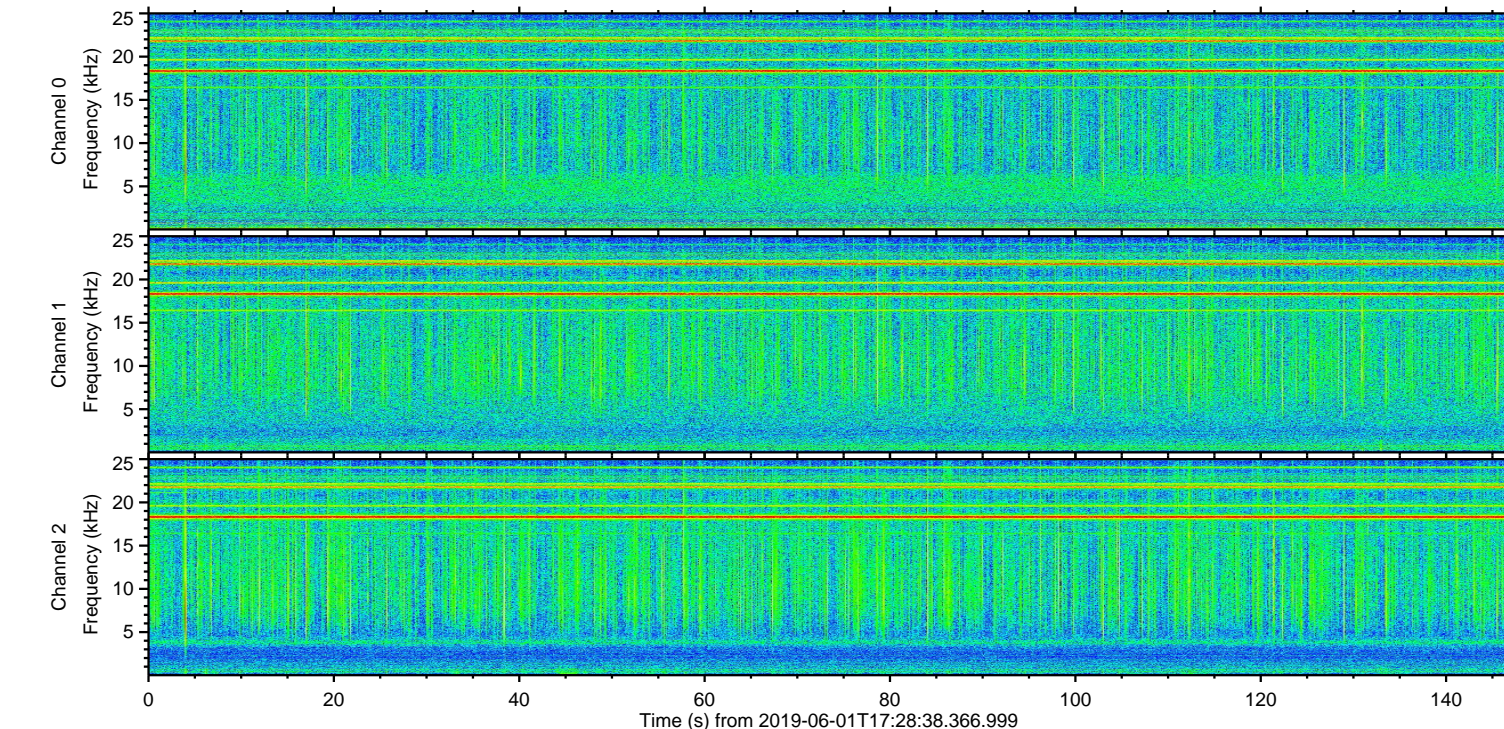
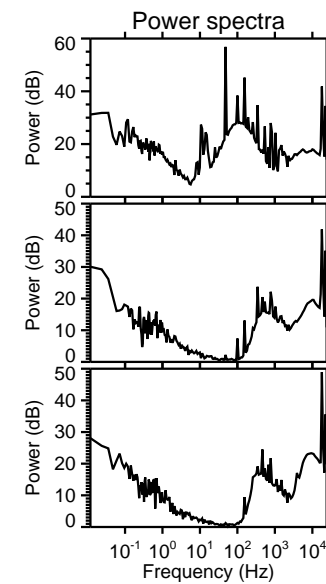
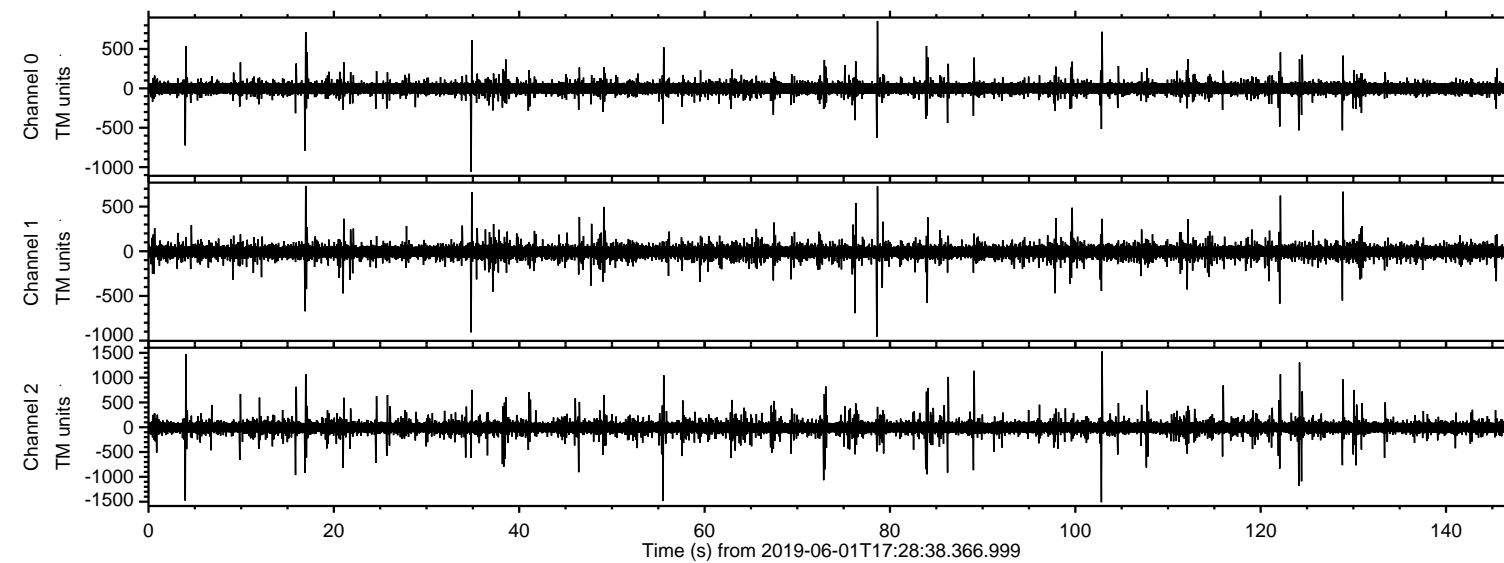


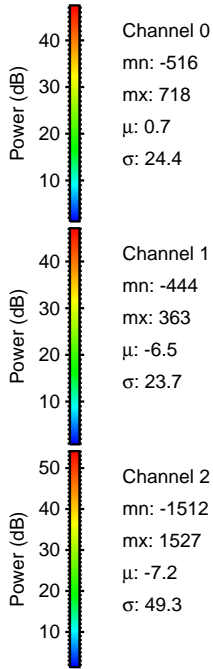
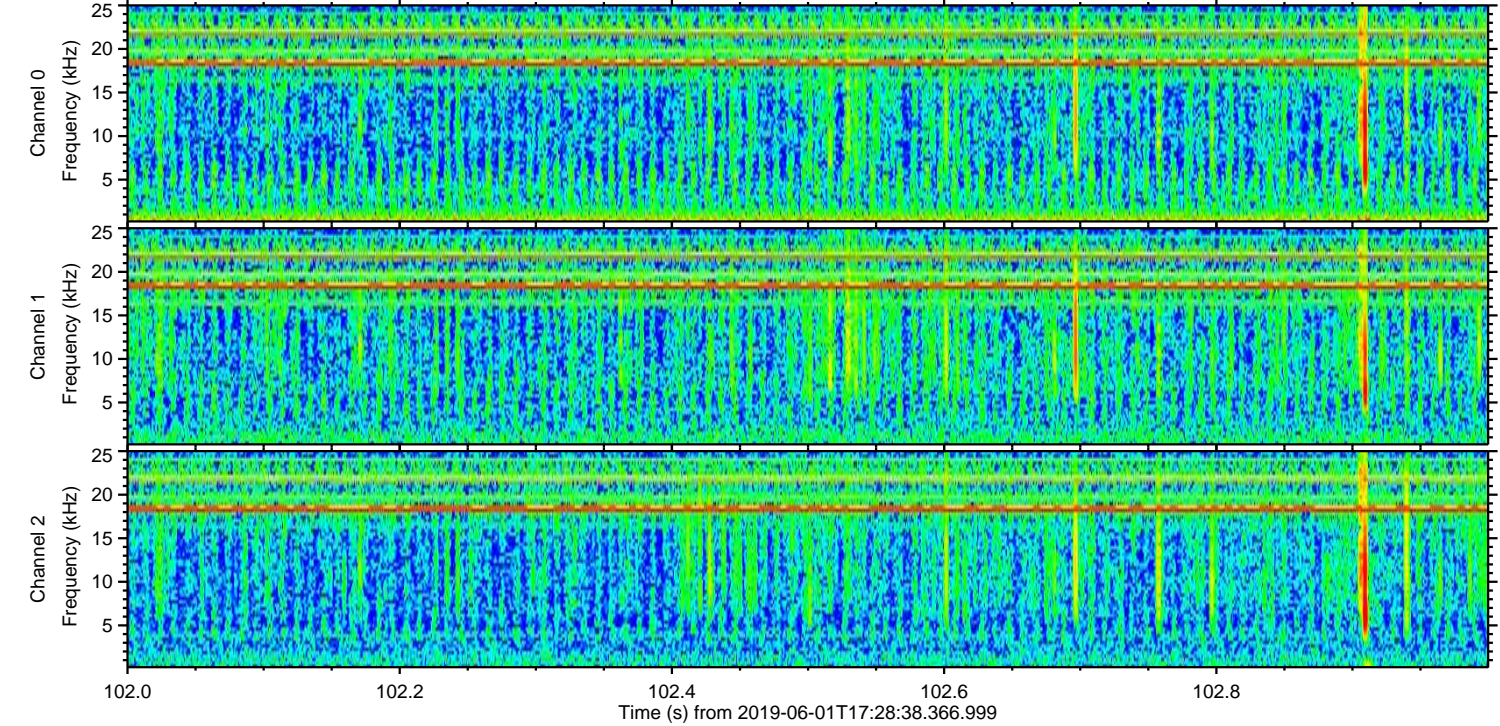
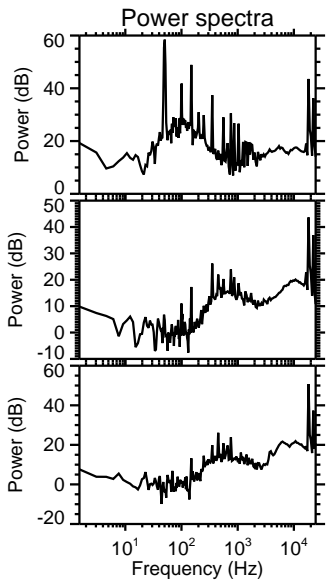
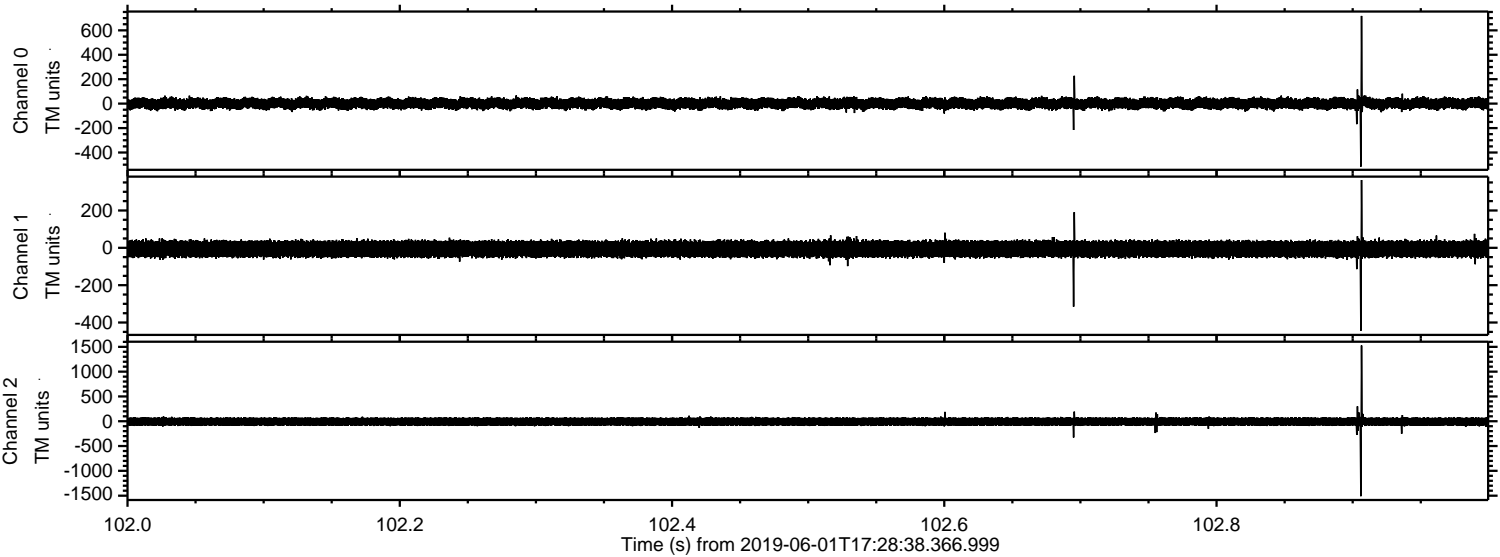
# ELMAVAN 3D WAVEFORMS (Measured data sampled at 50 kHz) 51000 packets of 144 samples from 2019-06-01T17:28:38.366.999.

Processed Sat Jun 1 19:36:45 2019 by ELM ver.2012-10-06 from 001\_\_elm20190601\_172837\_\_dat00.bin



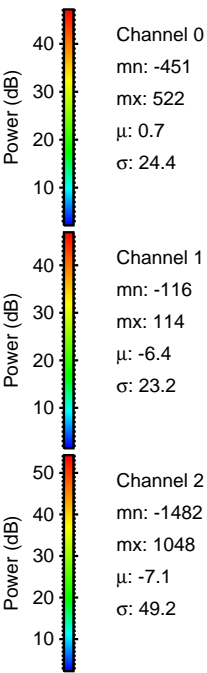
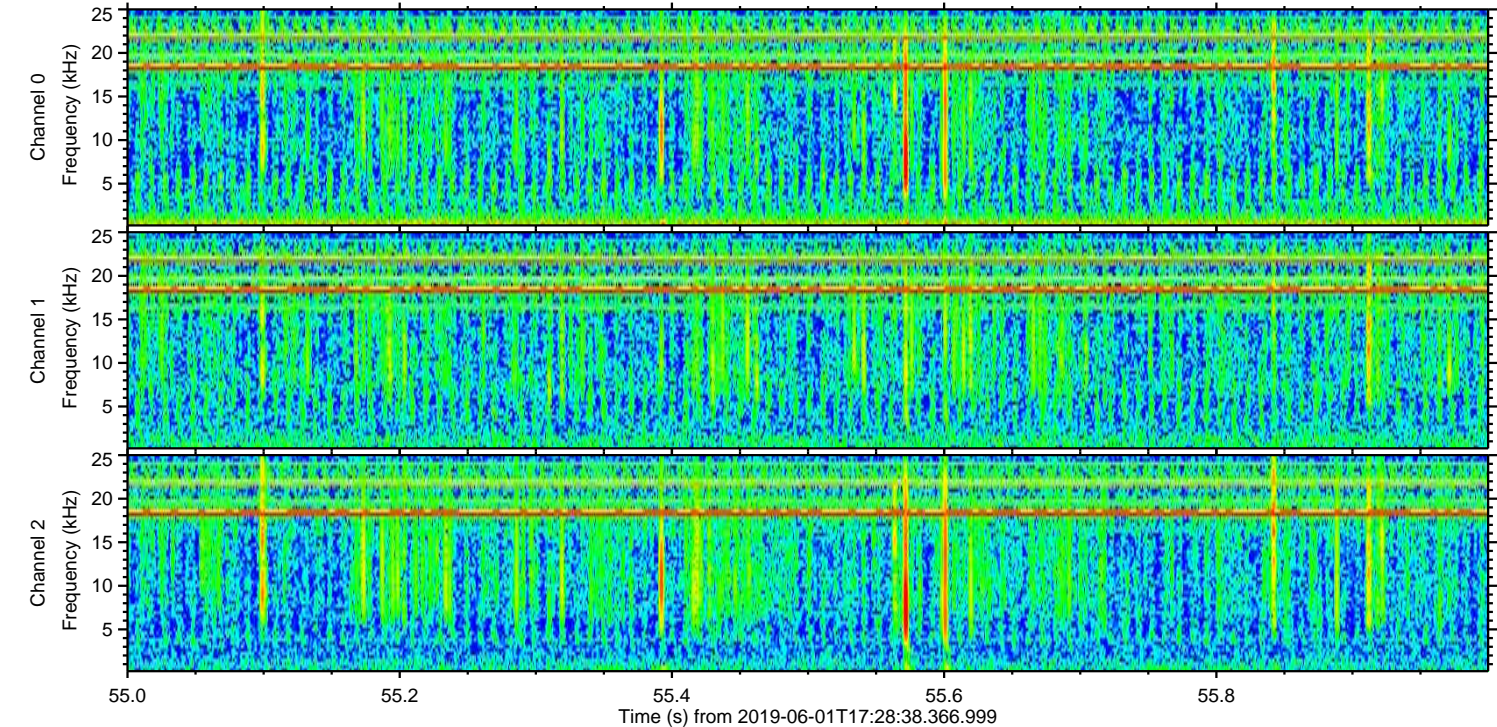
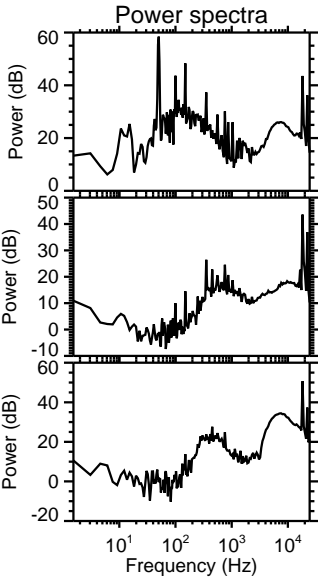
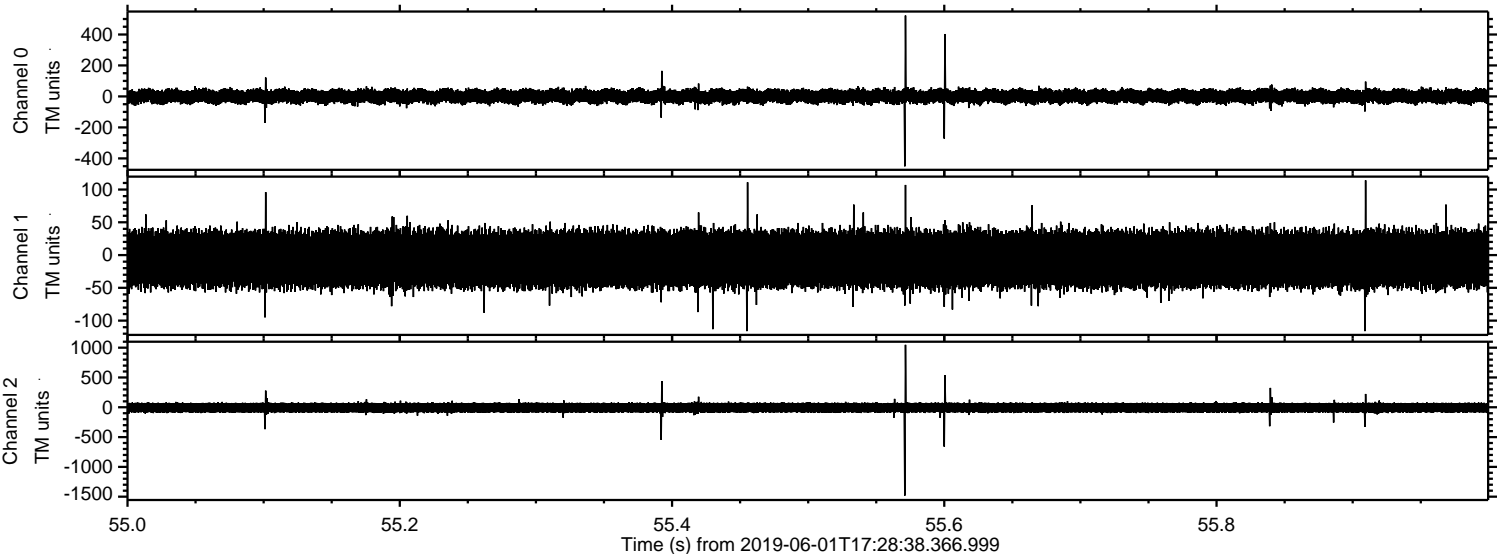


Processed Sat Jun 1 19:36:55 2019 by ELM ver.2012-10-06 from 001\_\_elm20190601\_172837\_\_dat00.bin



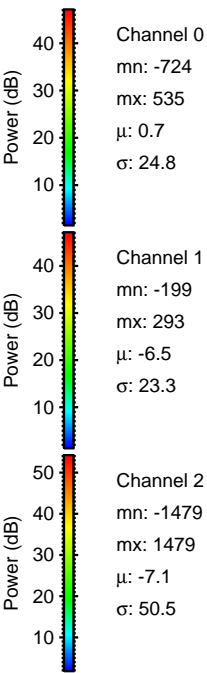
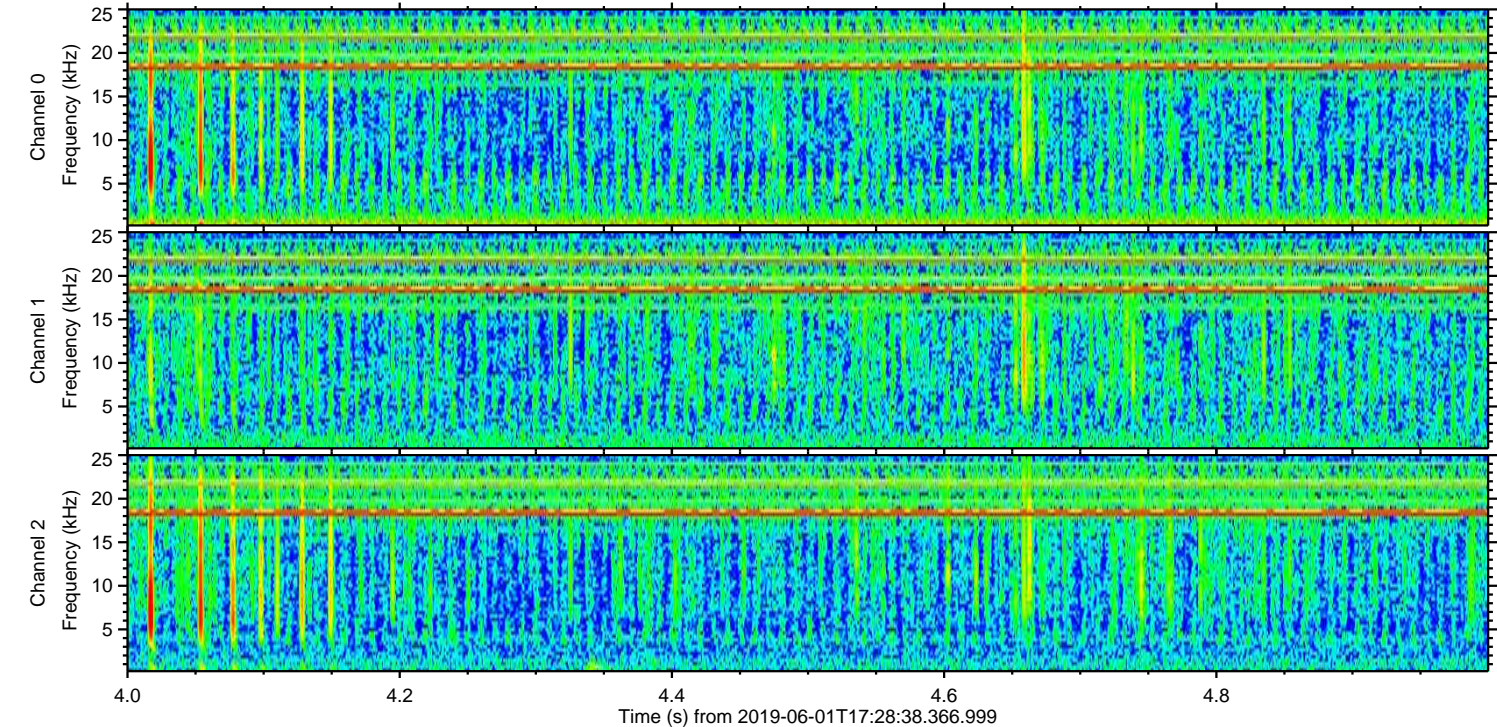
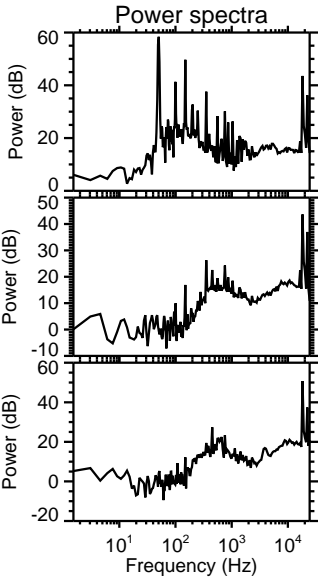
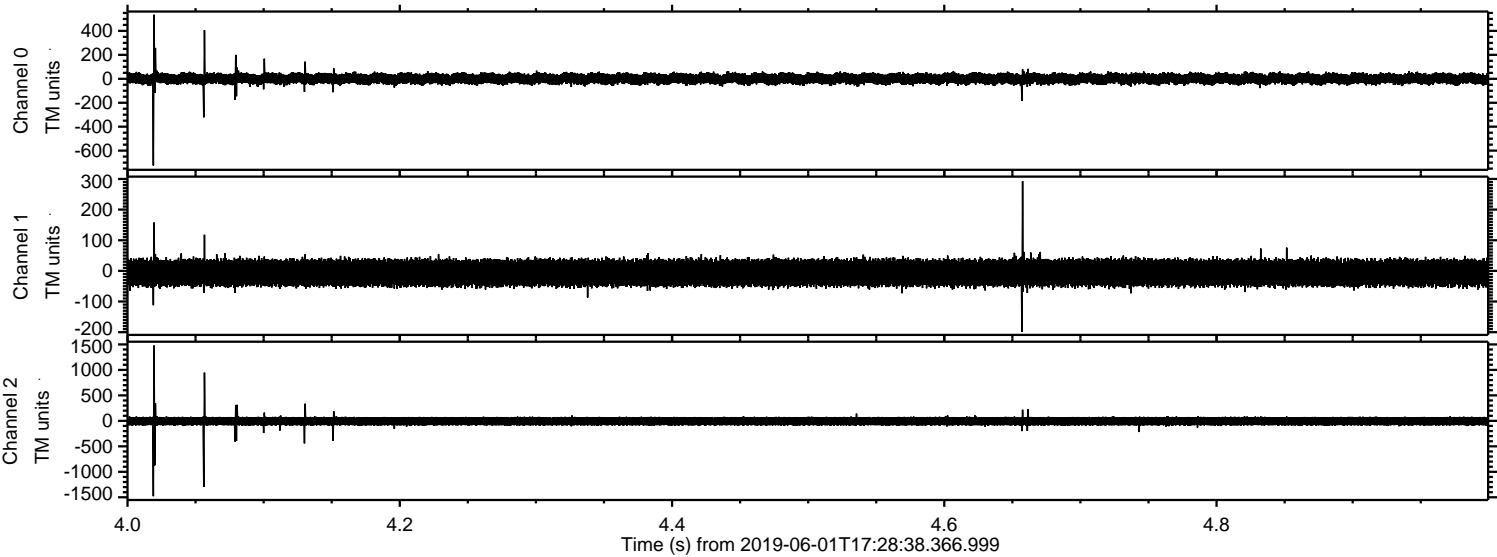


Processed Sat Jun 1 19:36:56 2019 by ELM ver.2012-10-06 from 001\_\_elm20190601\_172837\_\_dat00.bin





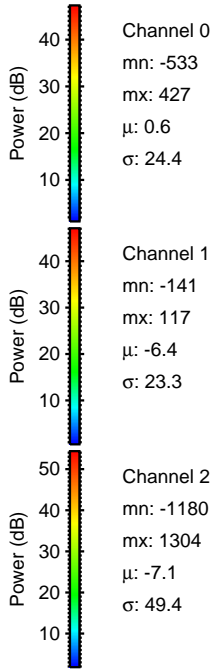
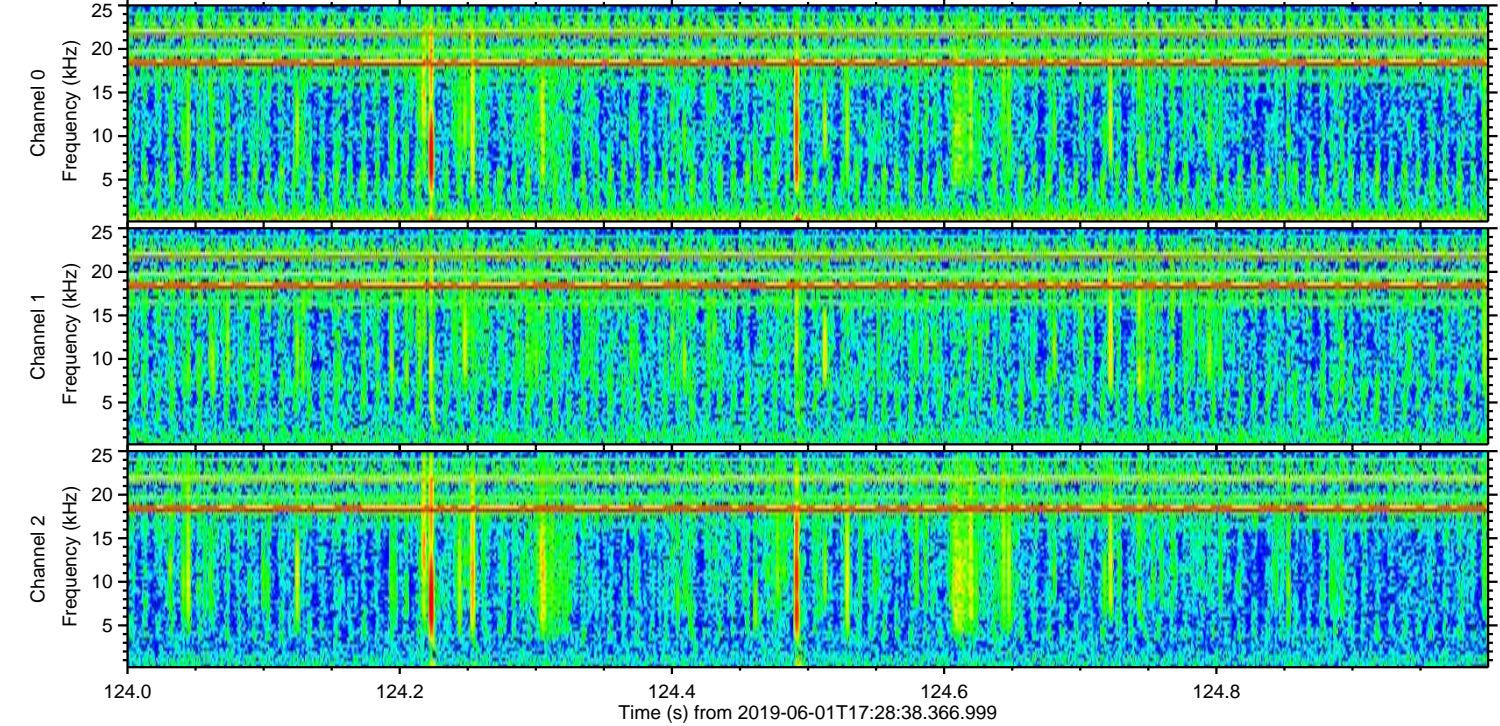
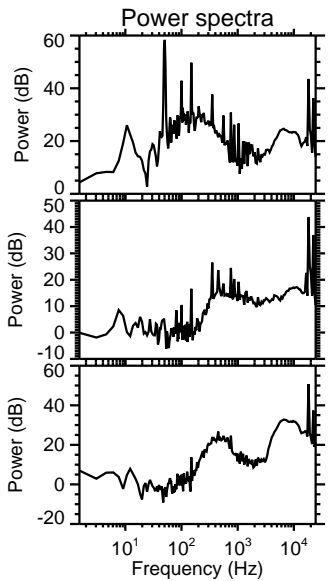
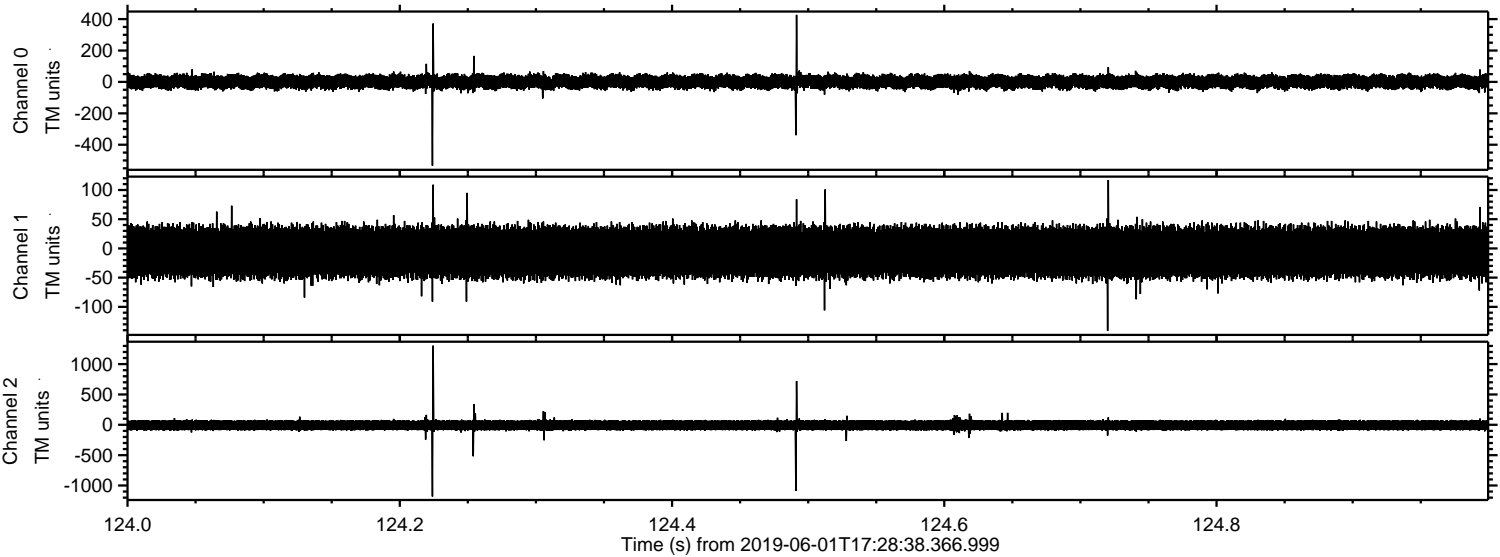
Processed Sat Jun 1 19:36:57 2019 by ELM ver.2012-10-06 from 001\_\_elm20190601\_172837\_\_dat00.bin





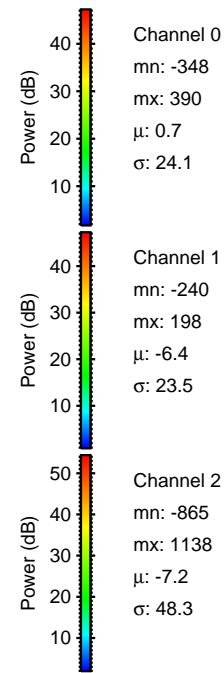
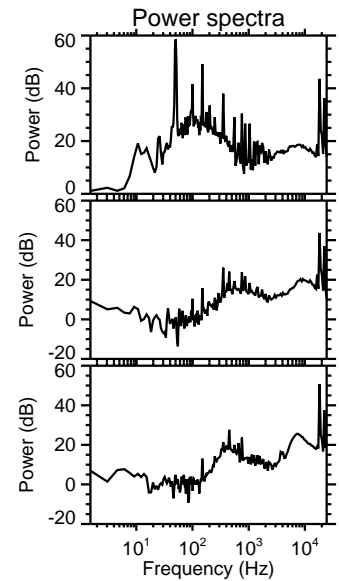
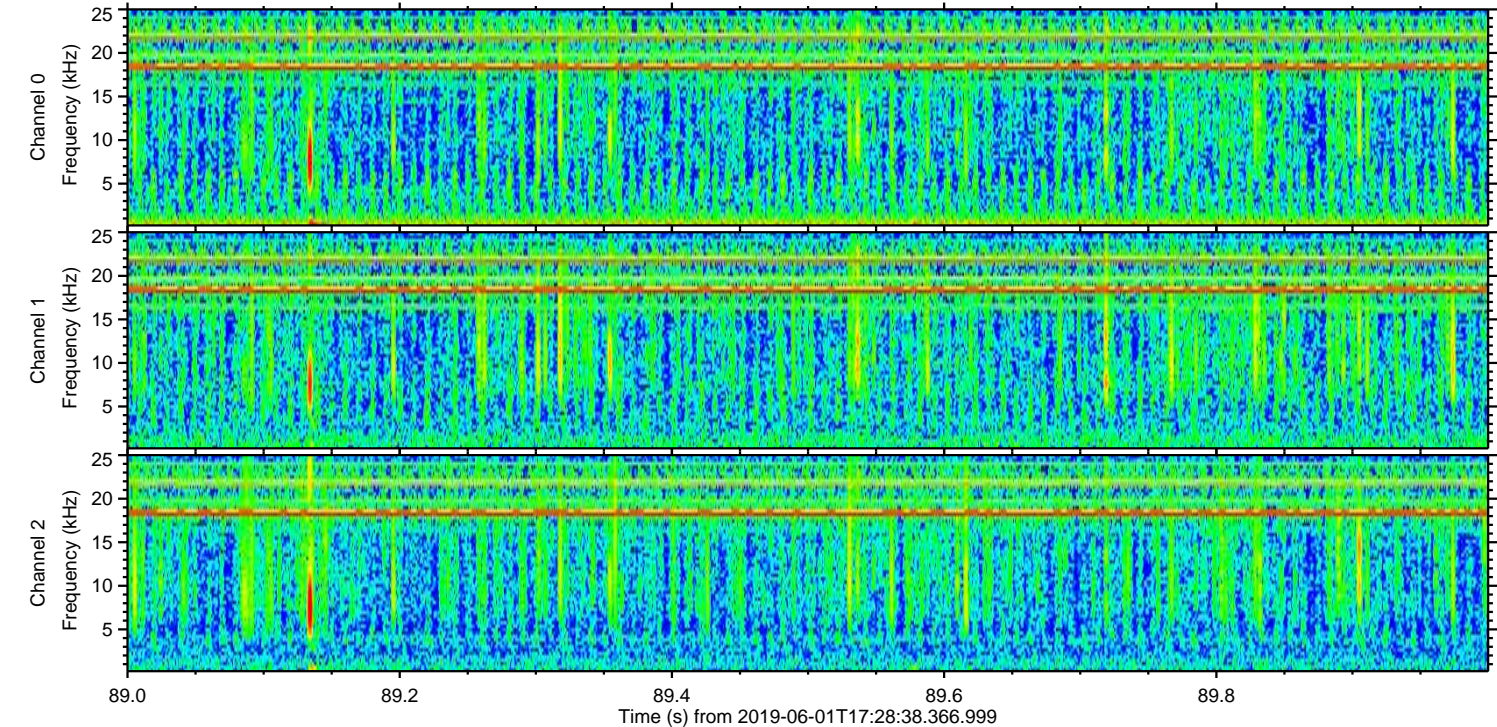
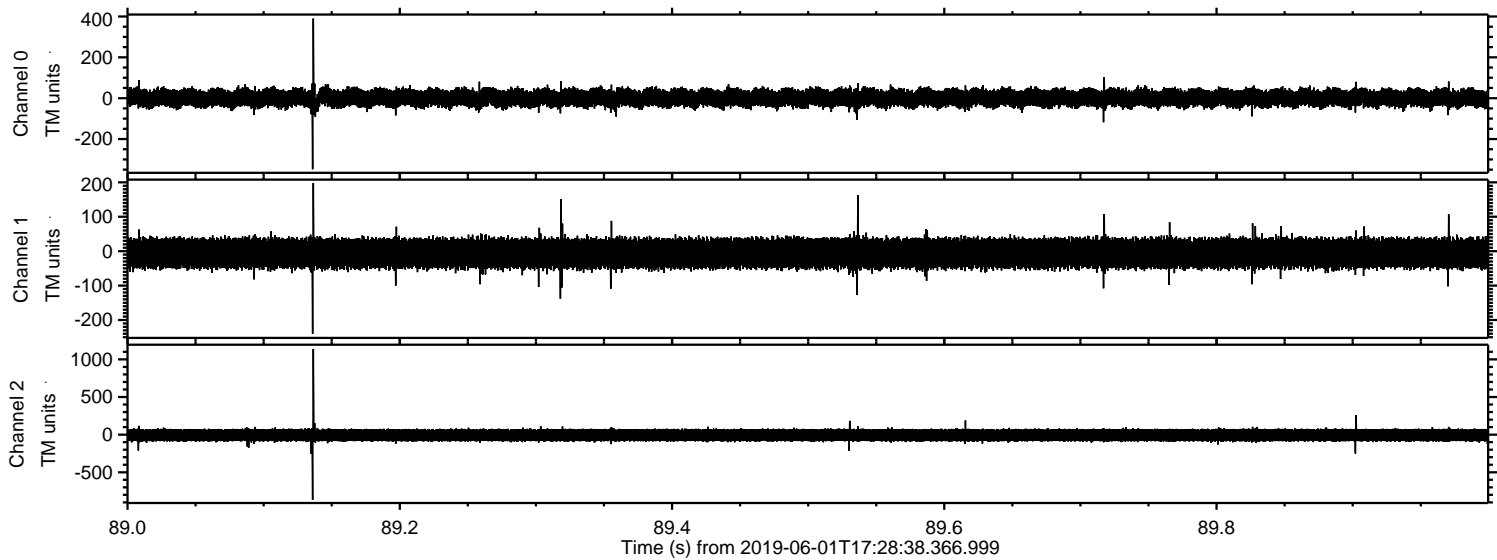
ELMAVAN 3D WAVEFORMS (Measured data sampled at 50 kHz) 51000 packets of 144 samples from 2019-06-01T17:28:38.366.999. Part 125/147

Processed Sat Jun 1 19:36:58 2019 by ELM ver.2012-10-06 from 001\_\_elm20190601\_172837\_\_dat00.bin



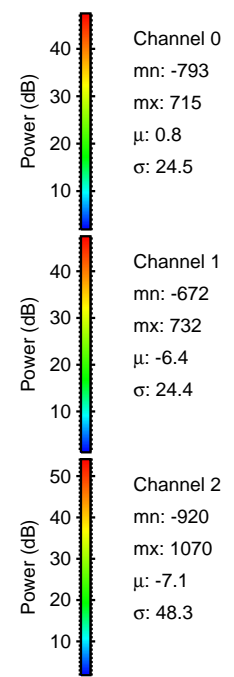
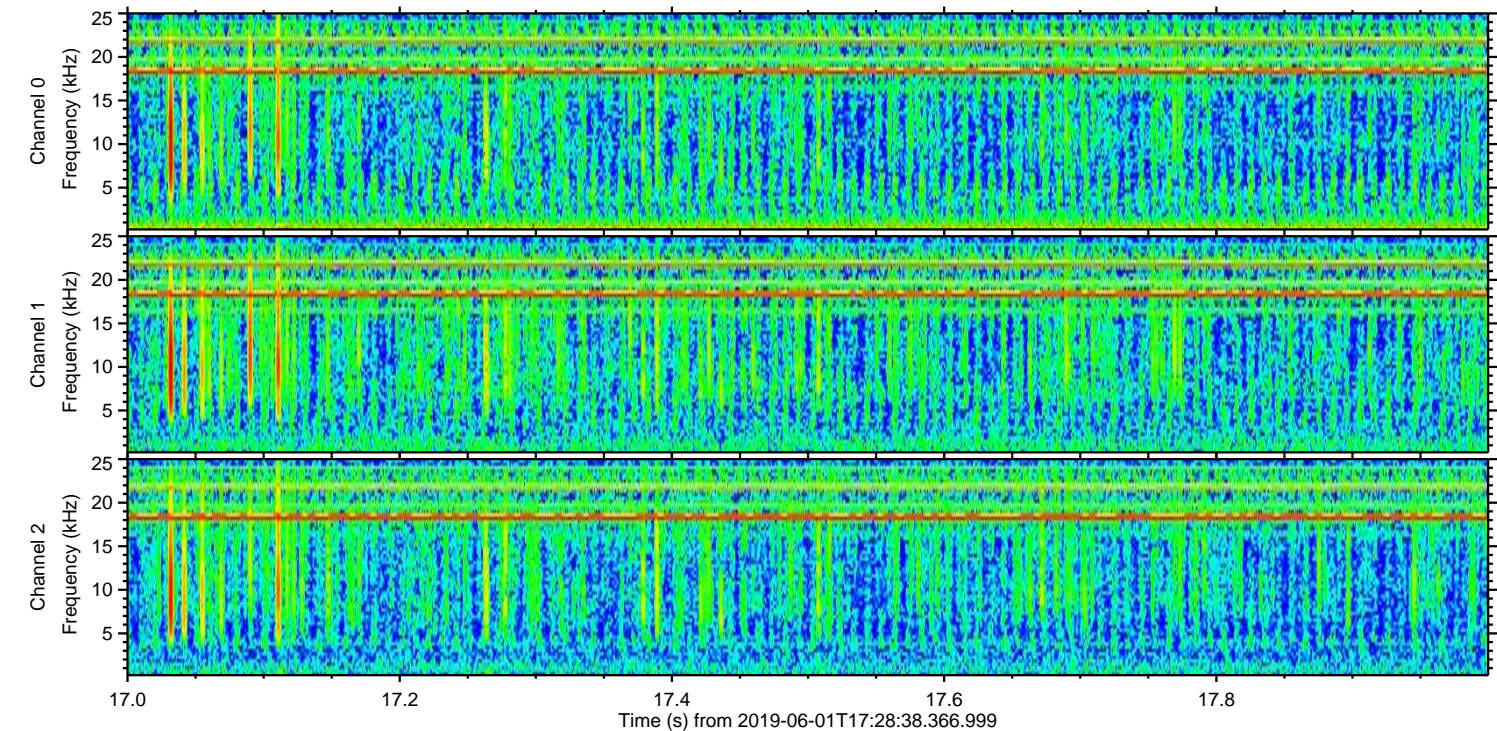
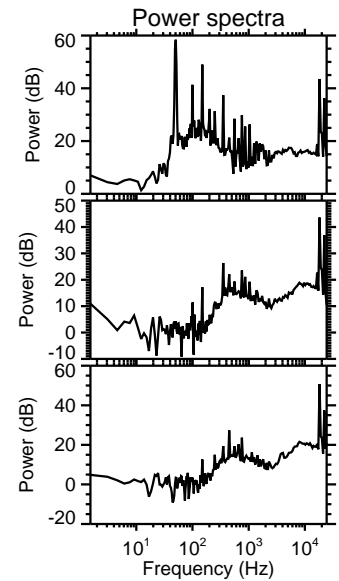
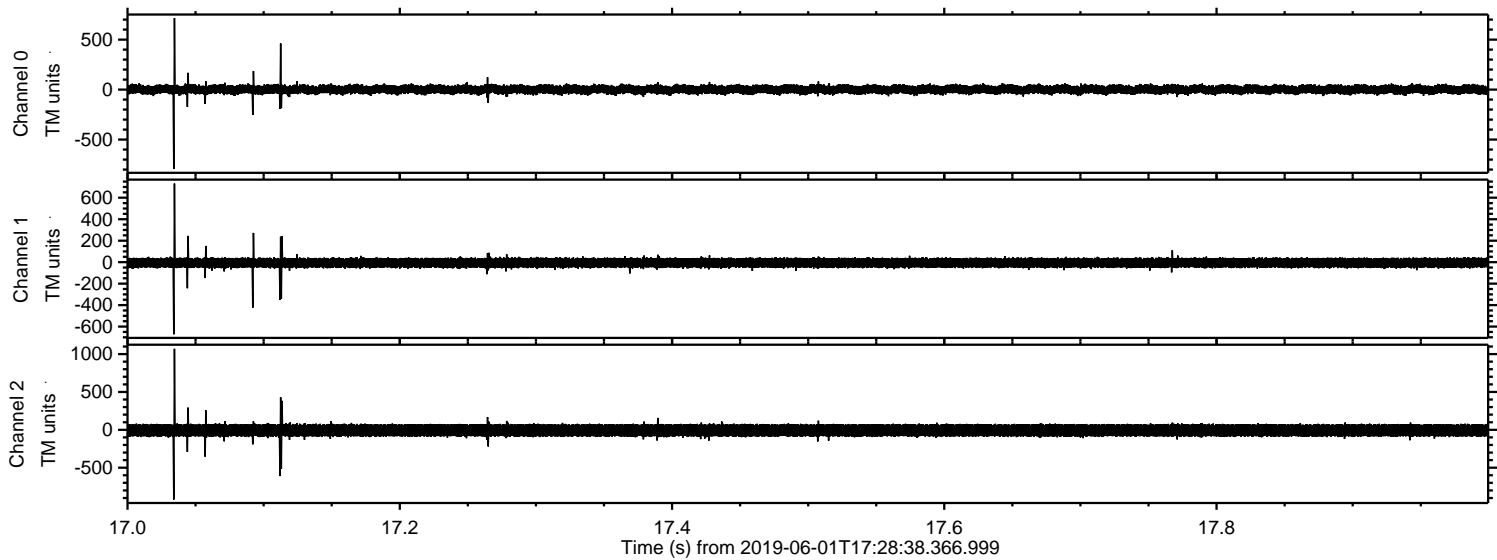


Processed Sat Jun 1 19:36:59 2019 by ELM ver.2012-10-06 from 001\_\_elm20190601\_172837\_\_dat00.bin



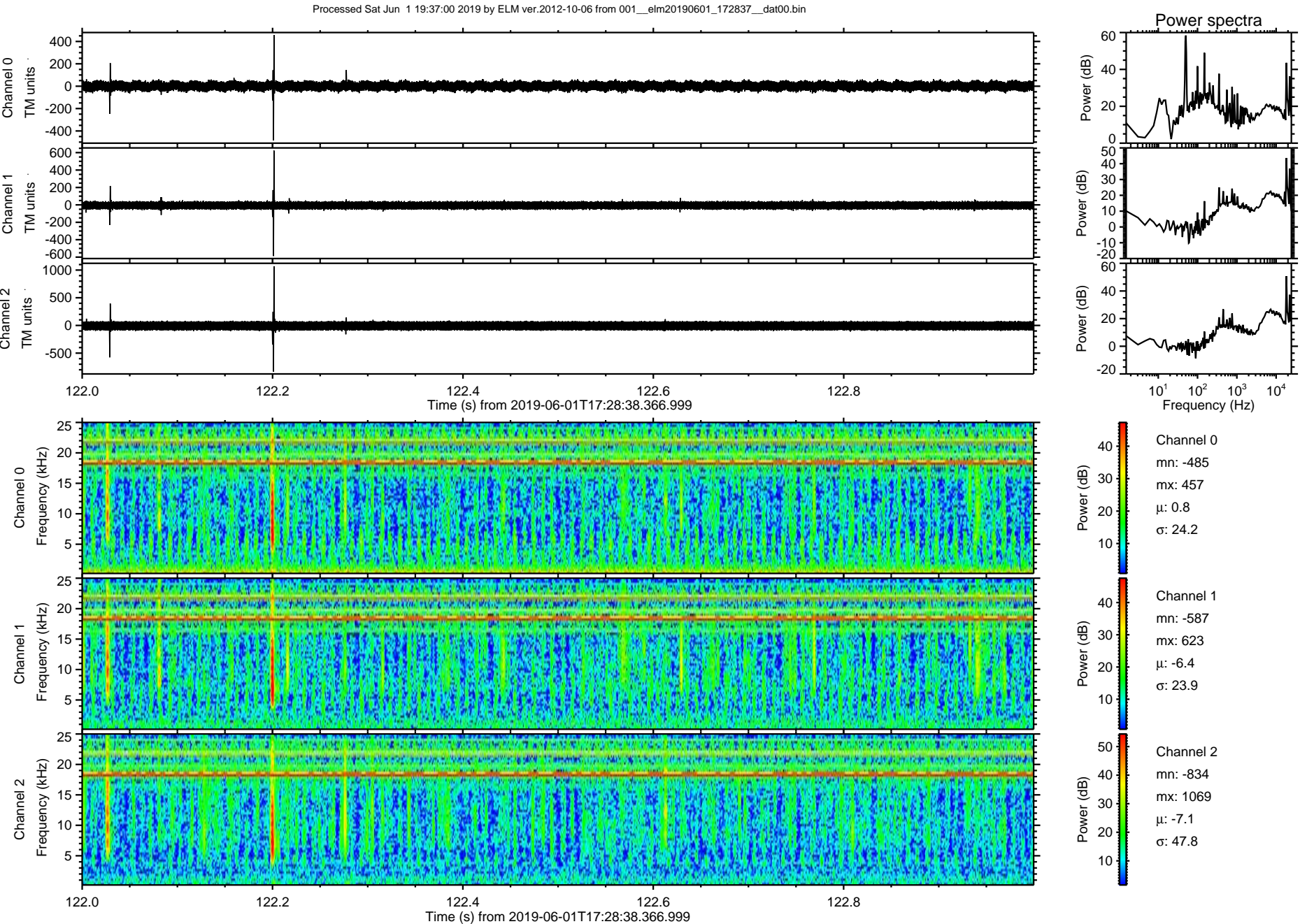


Processed Sat Jun 1 19:36:59 2019 by ELM ver.2012-10-06 from 001\_\_elm20190601\_172837\_\_dat00.bin



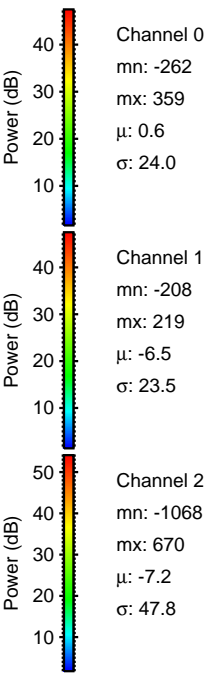
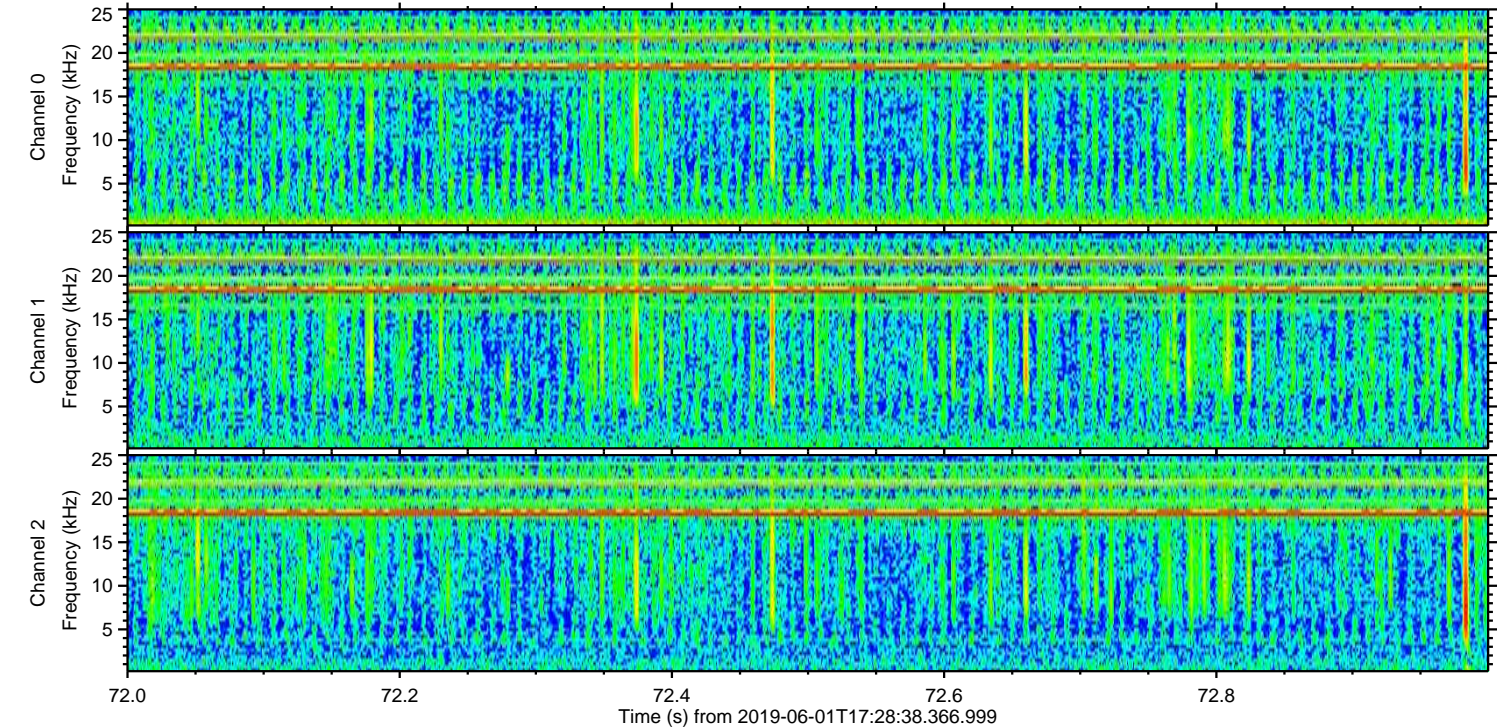
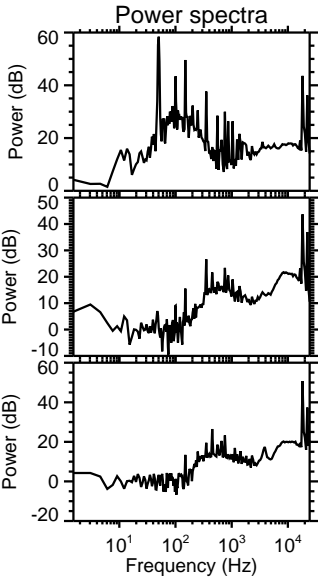
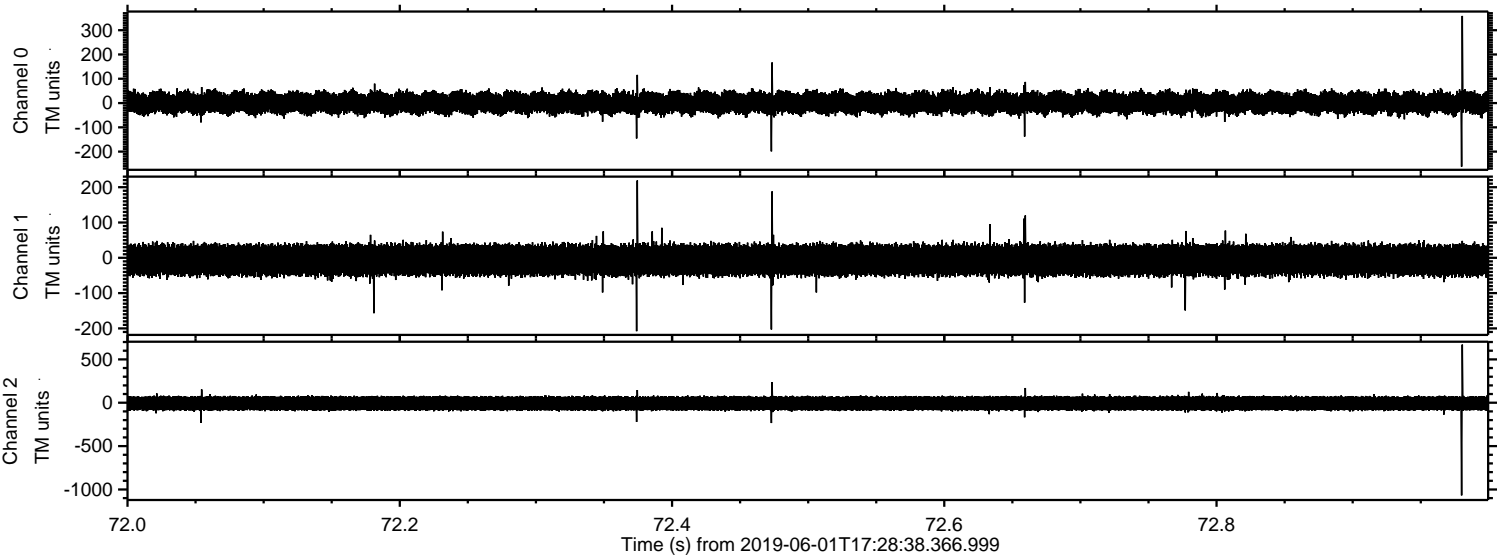


ELMAVAN 3D WAVEFORMS (Measured data sampled at 50 kHz) 51000 packets of 144 samples from 2019-06-01T17:28:38.366.999. Part 123/147





Processed Sat Jun 1 19:37:01 2019 by ELM ver.2012-10-06 from 001\_\_elm20190601\_172837\_\_dat00.bin





ELMAVAN 3D WAVEFORMS (Measured data sampled at 50 kHz) 51000 packets of 144 samples from 2019-06-01T17:28:38.366.999. Part 35/147

Processed Sat Jun 1 19:37:01 2019 by ELM ver.2012-10-06 from 001\_\_elm20190601\_172837\_\_dat00.bin

