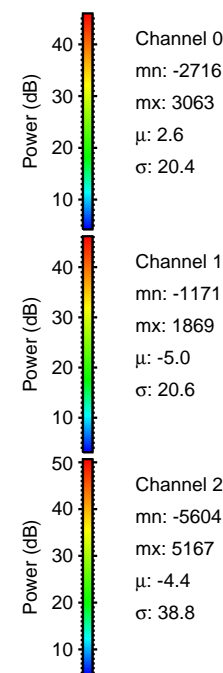
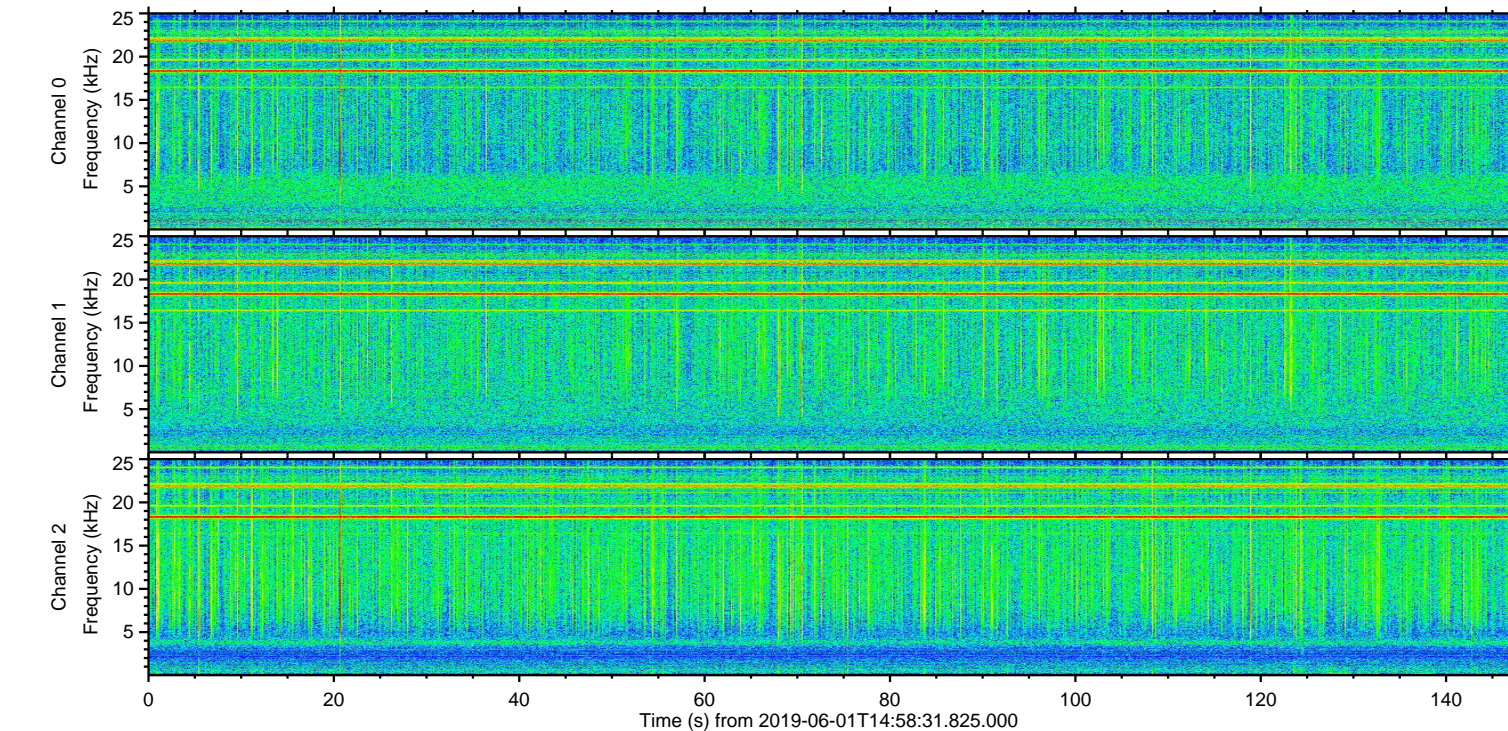
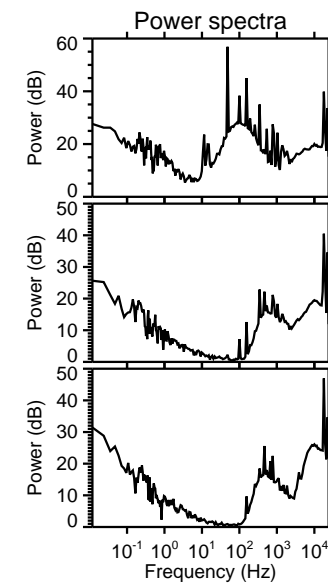
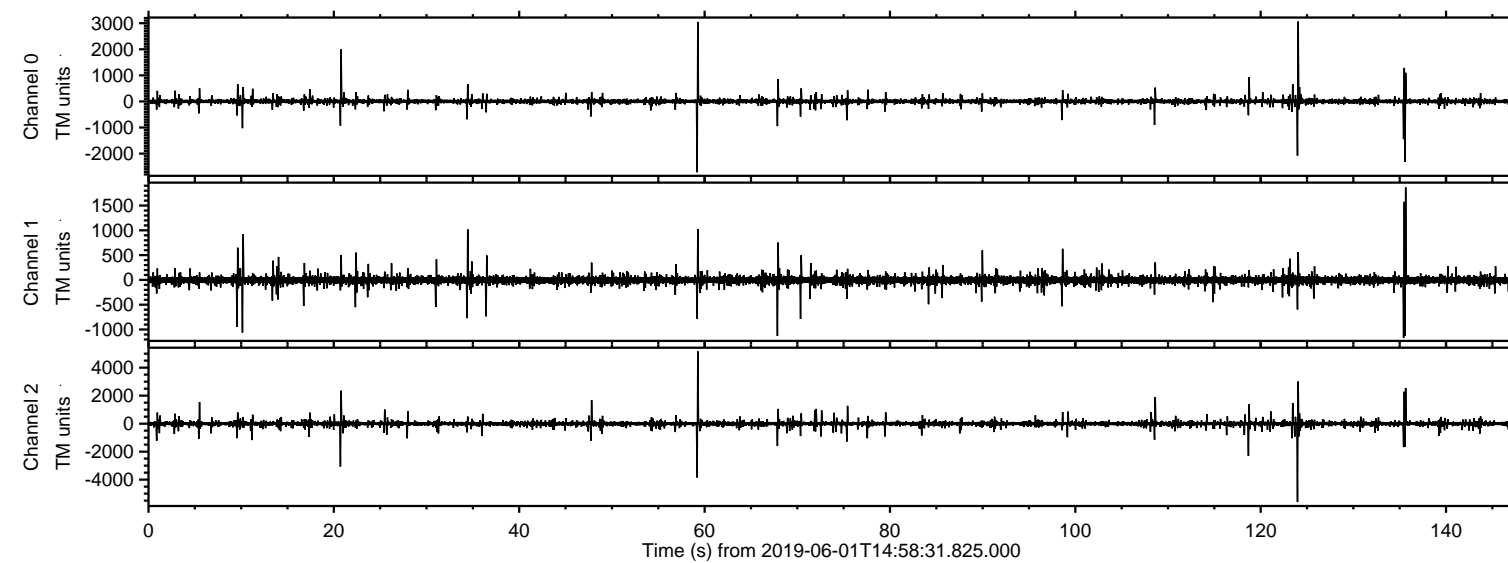


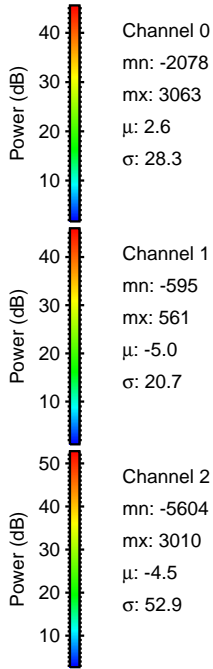
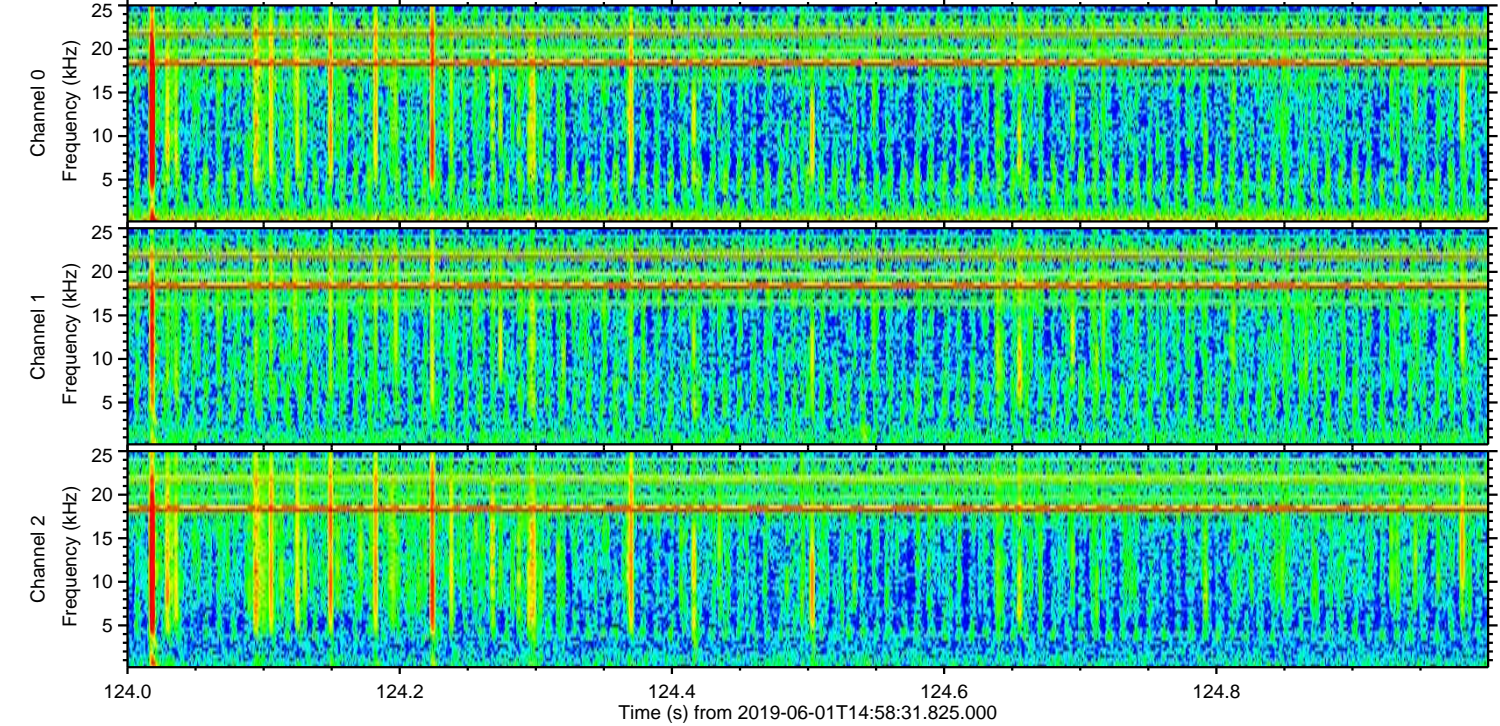
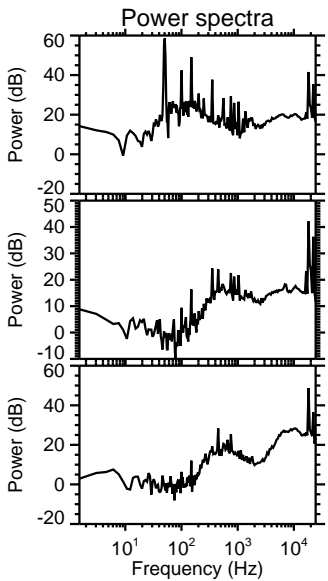
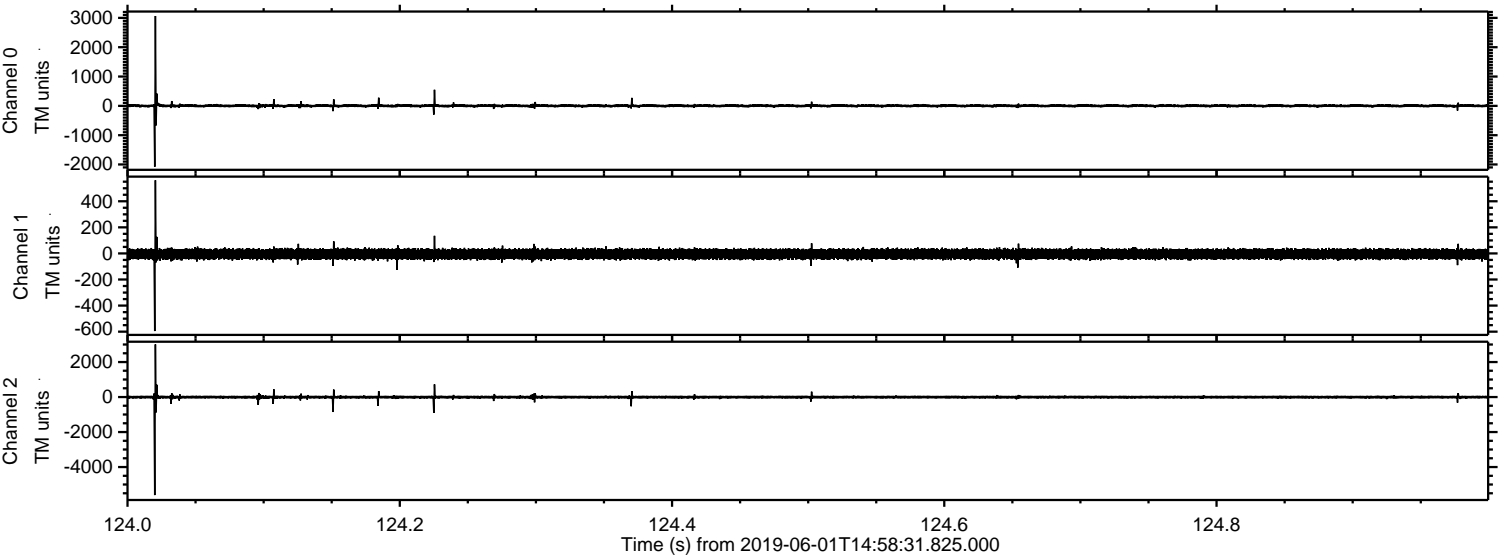
ELMAVAN 3D WAVEFORMS (Measured data sampled at 50 kHz) 51000 packets of 144 samples from 2019-06-01T14:58:31.825.000.

Processed Sat Jun 1 17:05:56 2019 by ELM ver.2012-10-06 from 001__elm20190601_145830__dat00.bin

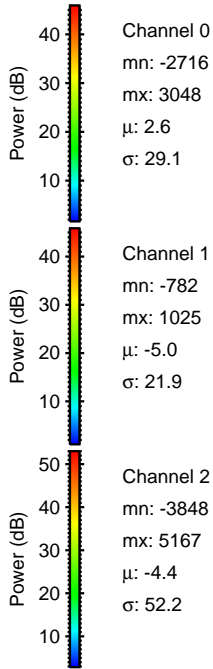
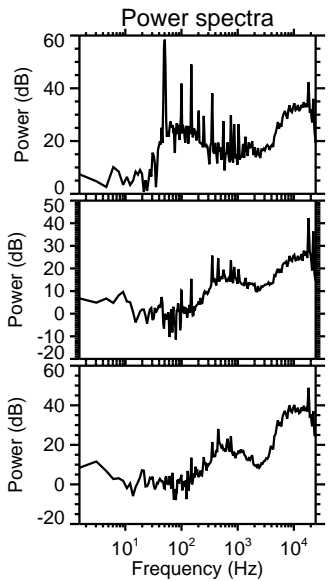
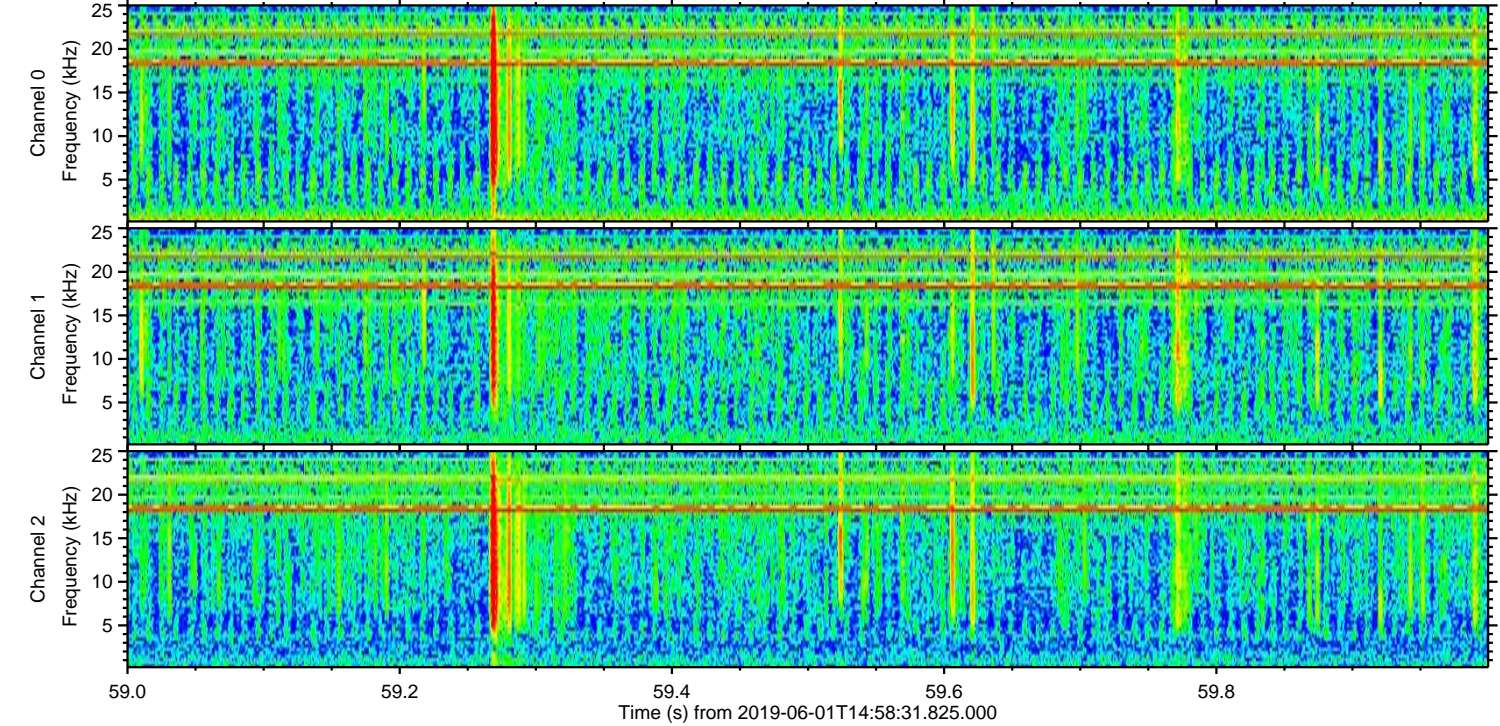
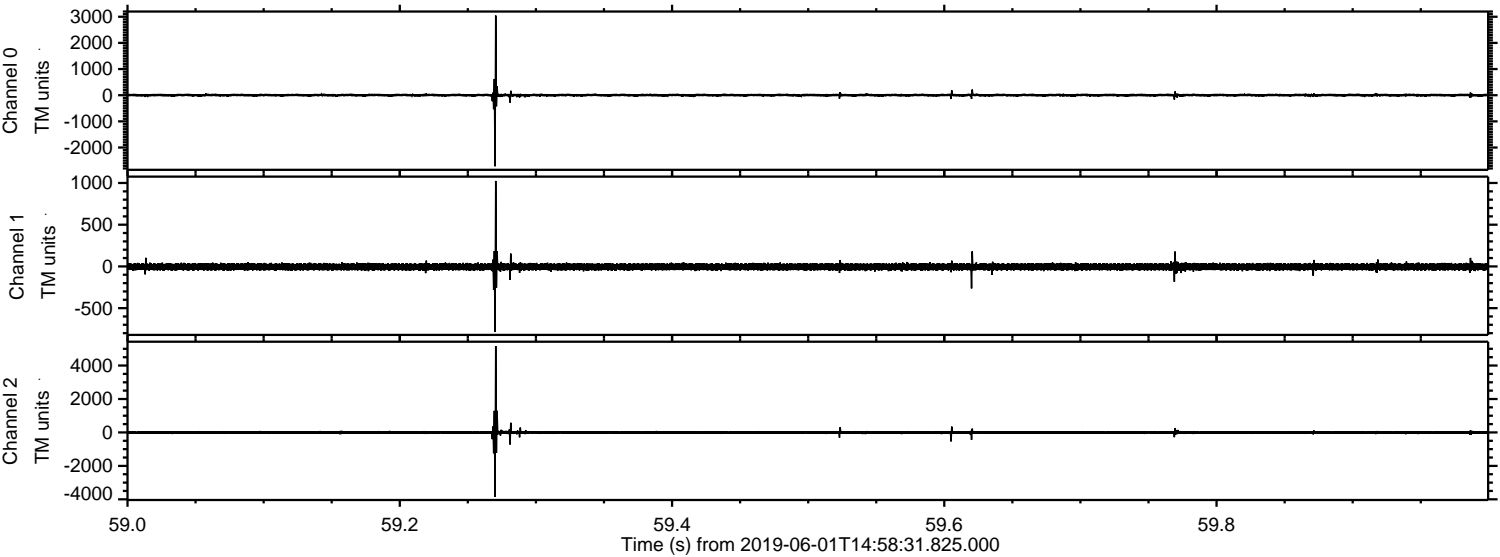


ELMAVAN 3D WAVEFORMS (Measured data sampled at 50 kHz) 51000 packets of 144 samples from 2019-06-01T14:58:31.825.000. Part 125/147

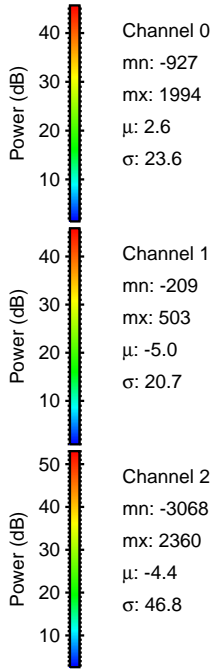
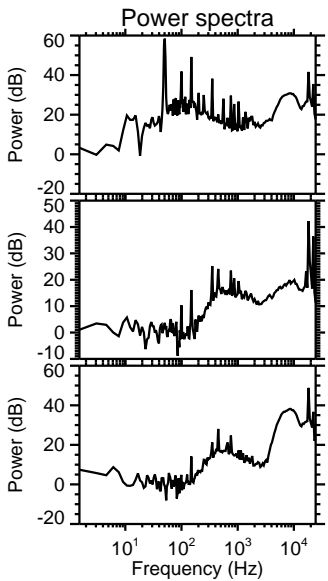
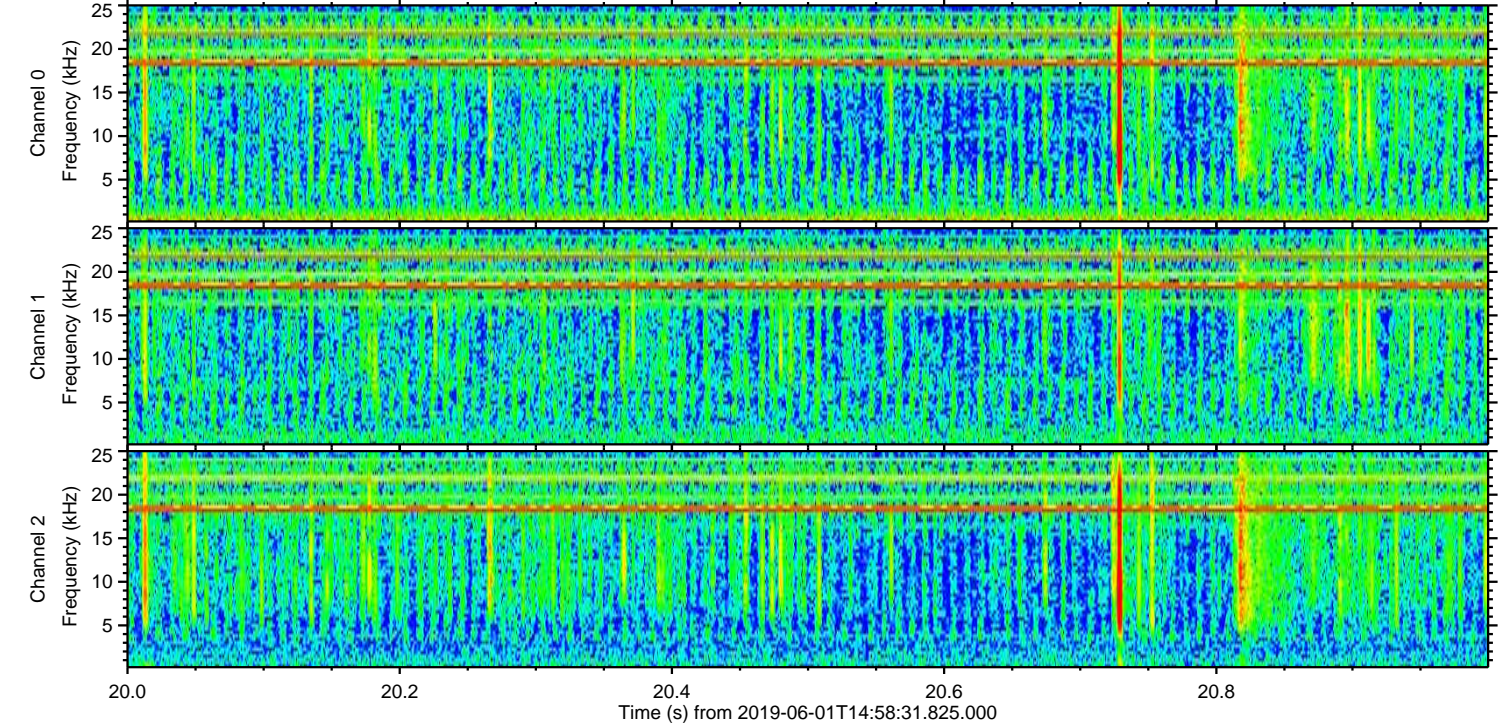
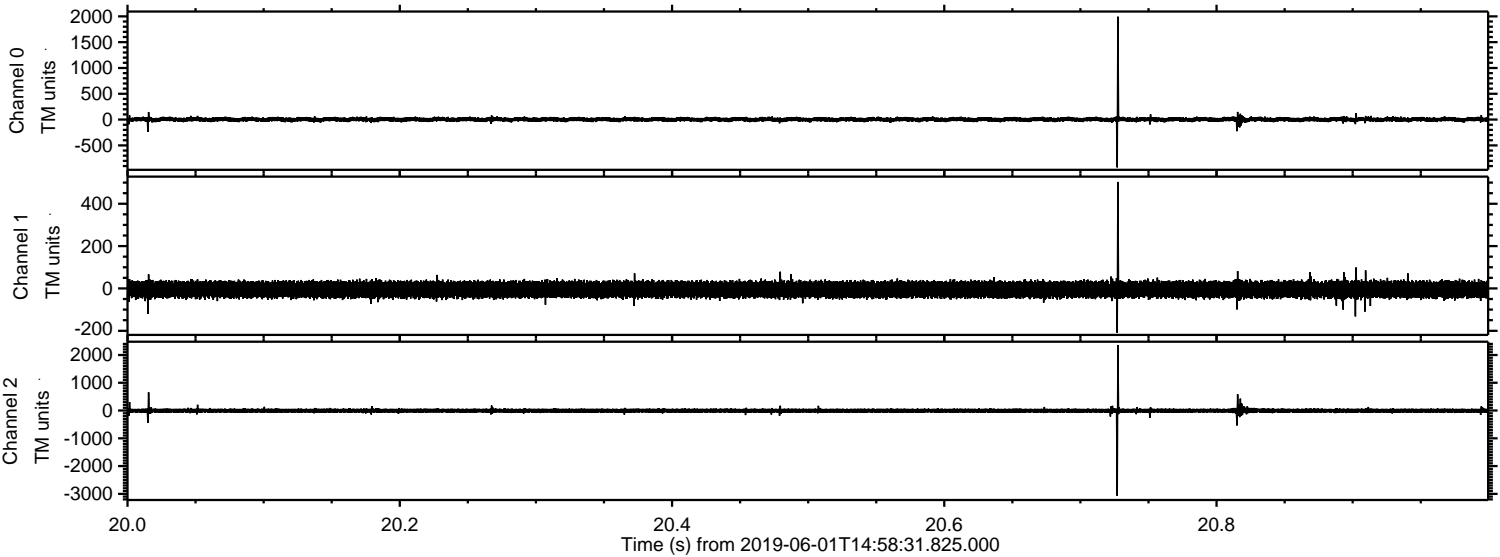
Processed Sat Jun 1 17:06:02 2019 by ELM ver.2012-10-06 from 001__elm20190601_145830__dat00.bin



Processed Sat Jun 1 17:06:03 2019 by ELM ver.2012-10-06 from 001__elm20190601_145830__dat00.bin



Processed Sat Jun 1 17:06:03 2019 by ELM ver.2012-10-06 from 001__elm20190601_145830__dat00.bin



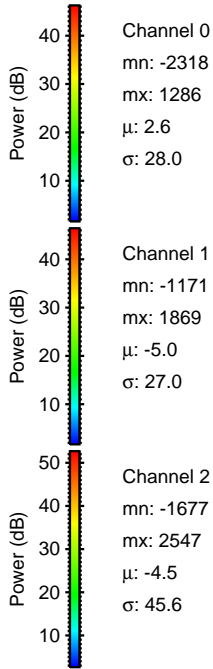
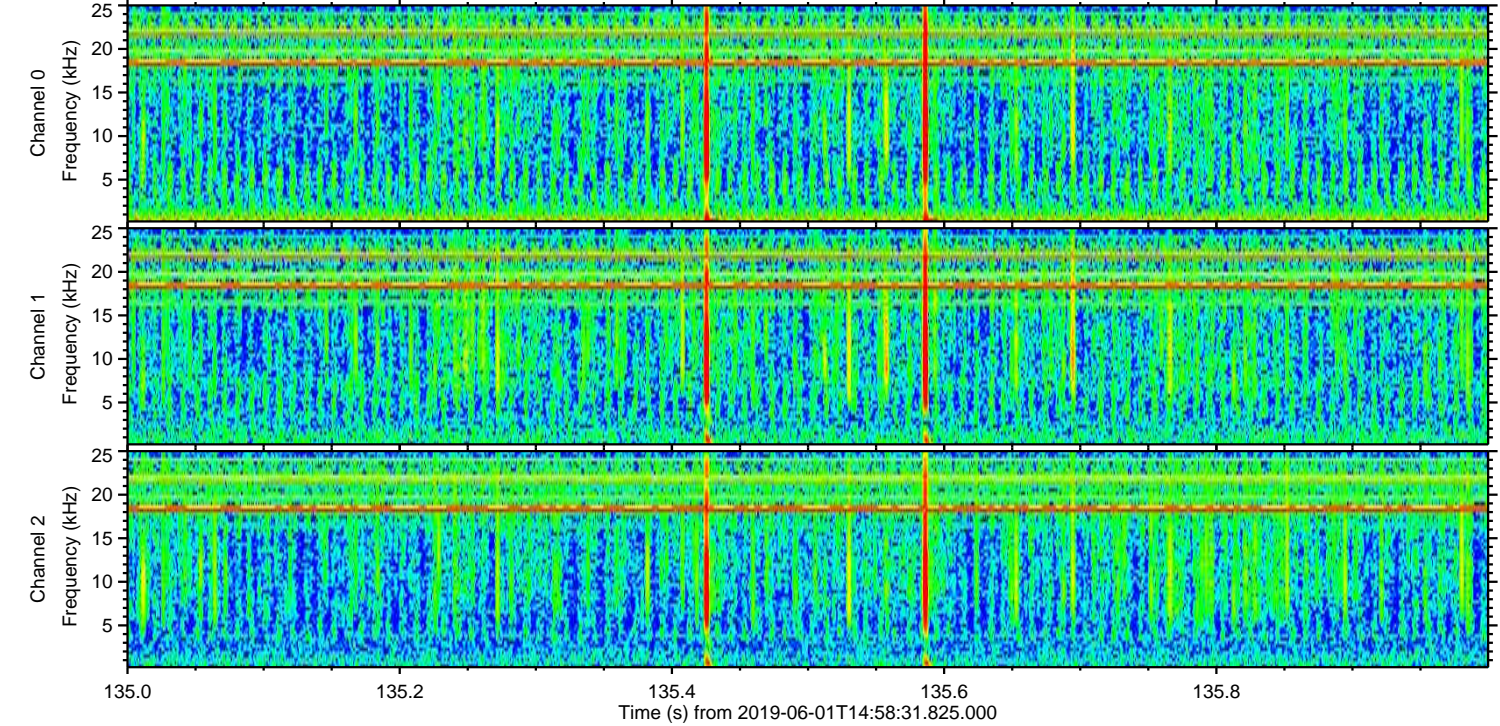
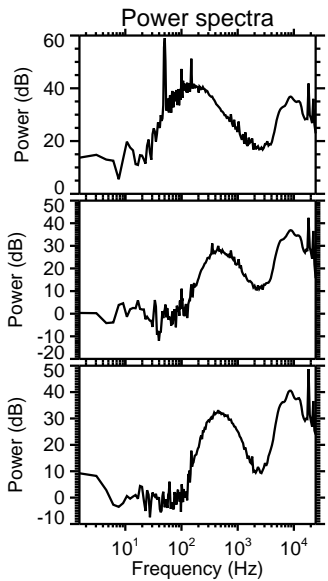
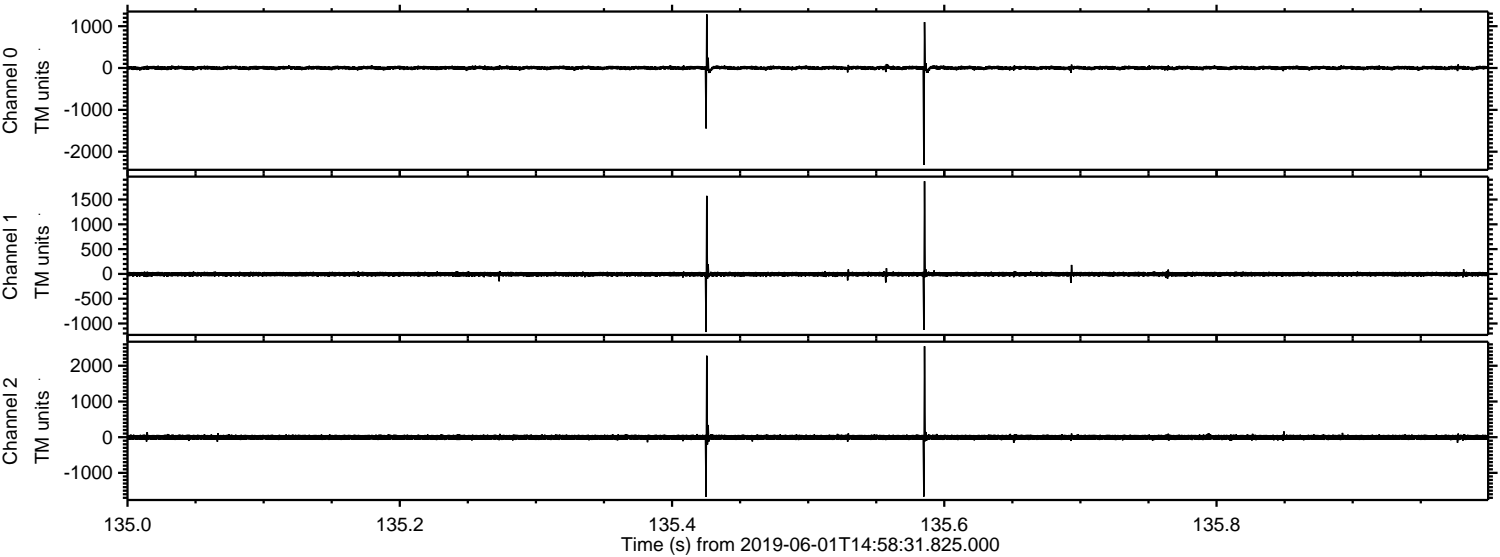
Channel 0
mn: -927
mx: 1994
 μ : 2.6
 σ : 23.6

Channel 1
mn: -209
mx: 503
 μ : -5.0
 σ : 20.7

Channel 2
mn: -3068
mx: 2360
 μ : -4.4
 σ : 46.8

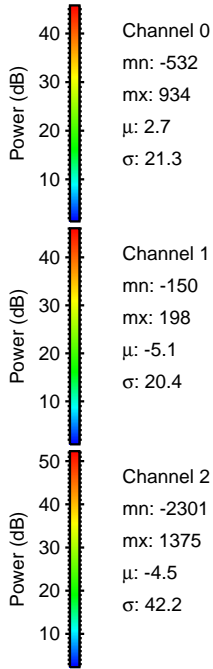
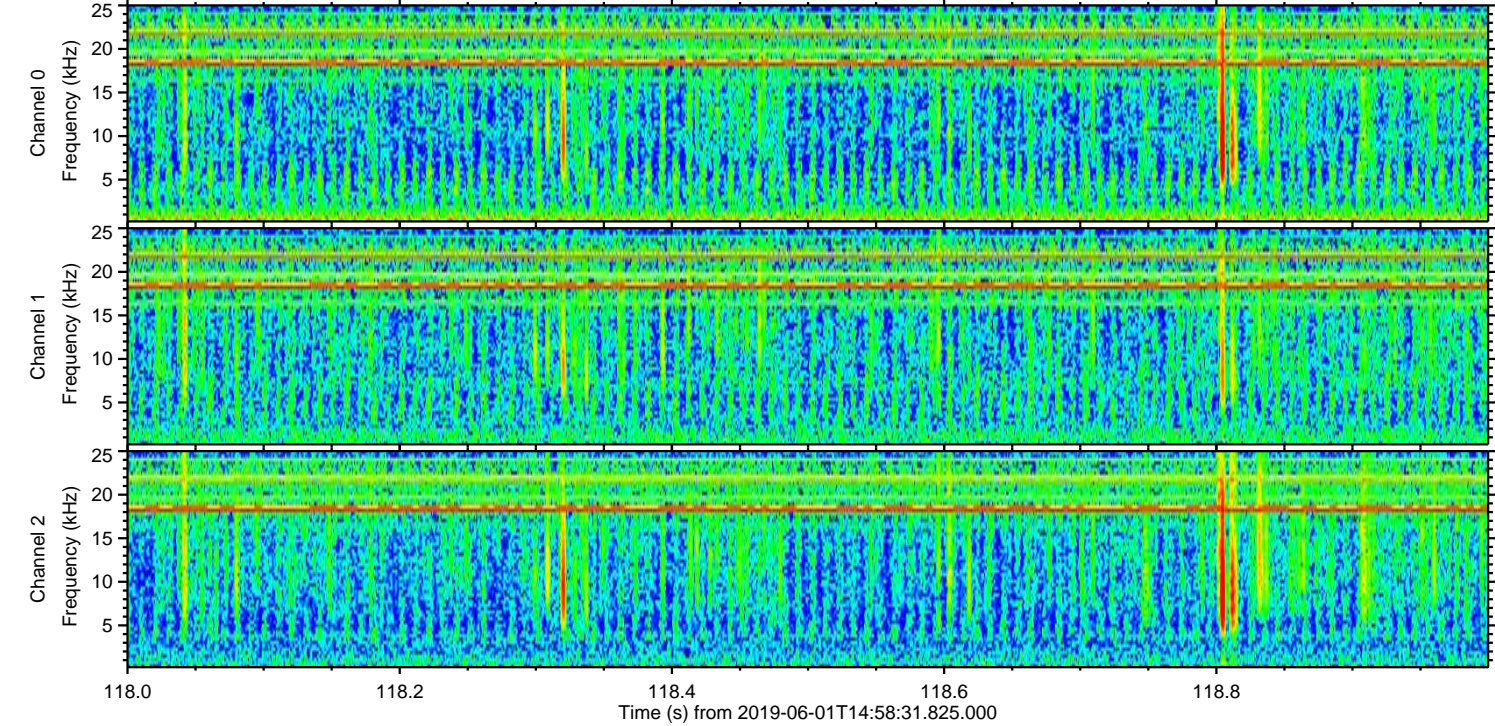
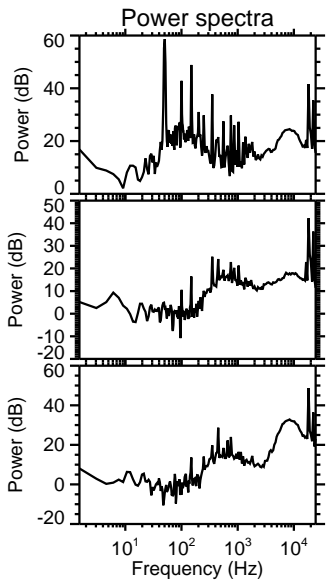
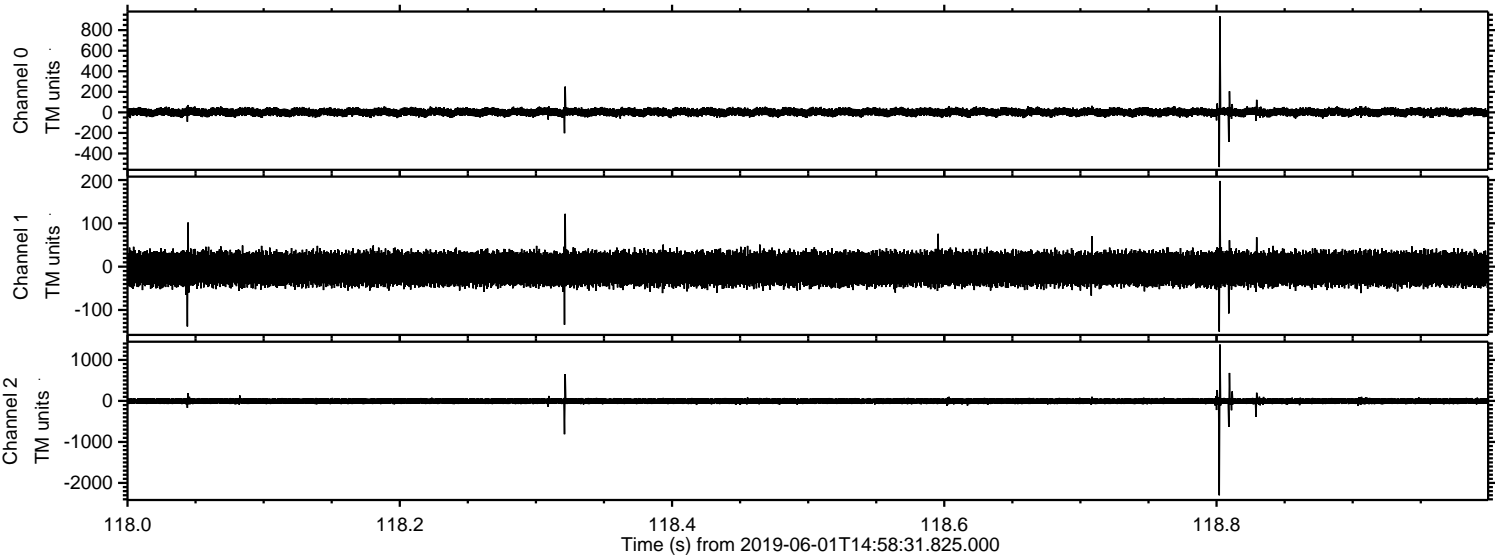
ELMAVAN 3D WAVEFORMS (Measured data sampled at 50 kHz) 51000 packets of 144 samples from 2019-06-01T14:58:31.825.000. Part 136/147

Processed Sat Jun 1 17:06:04 2019 by ELM ver.2012-10-06 from 001__elm20190601_145830__dat00.bin

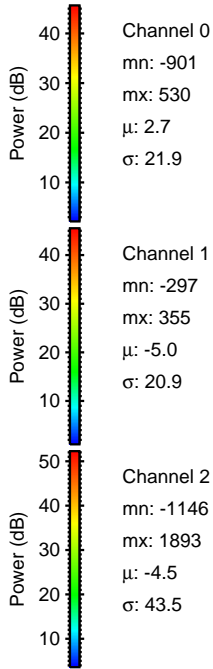
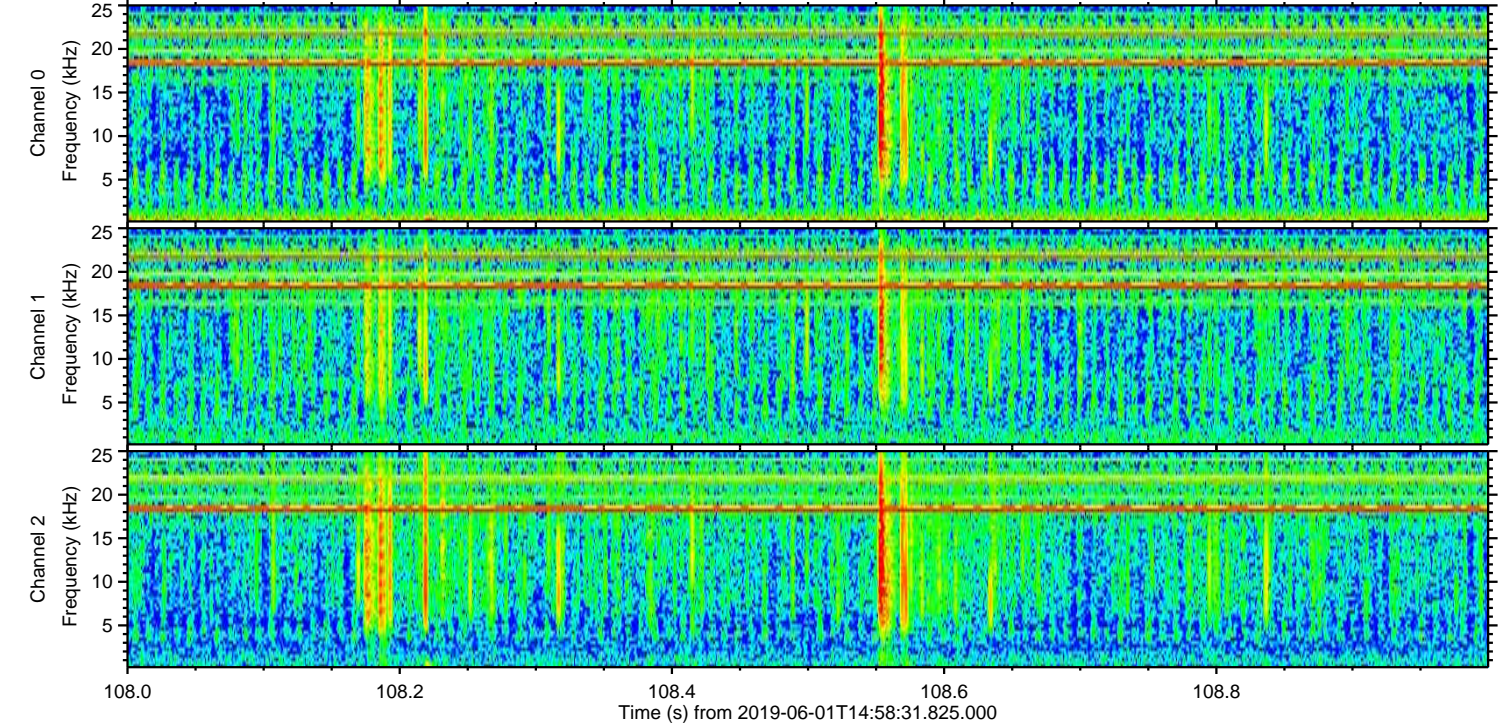
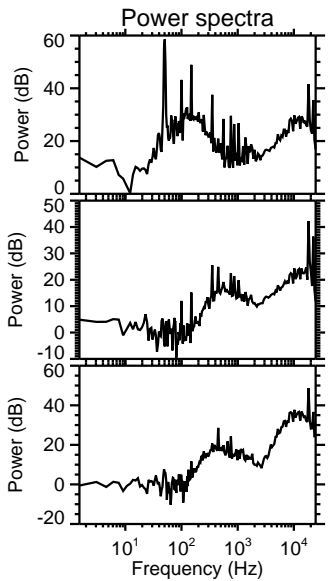
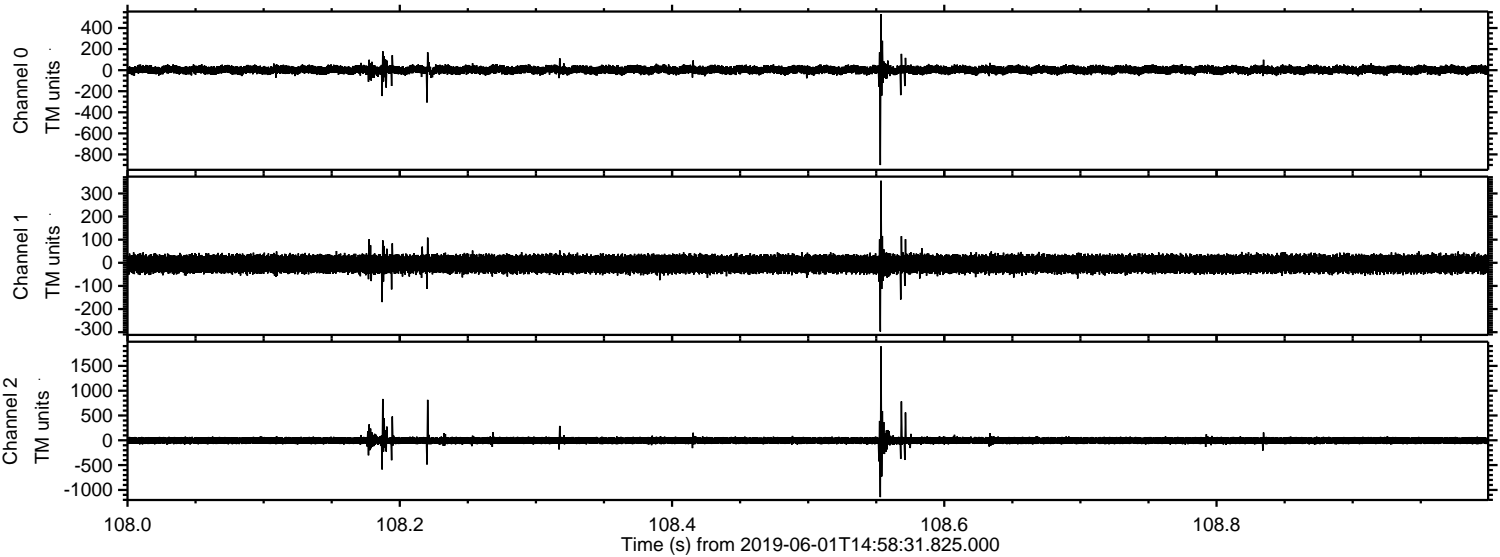


ELMAVAN 3D WAVEFORMS (Measured data sampled at 50 kHz) 51000 packets of 144 samples from 2019-06-01T14:58:31.825.000. Part 119/147

Processed Sat Jun 1 17:06:05 2019 by ELM ver.2012-10-06 from 001__elm20190601_145830__dat00.bin



Processed Sat Jun 1 17:06:05 2019 by ELM ver.2012-10-06 from 001__elm20190601_145830__dat00.bin

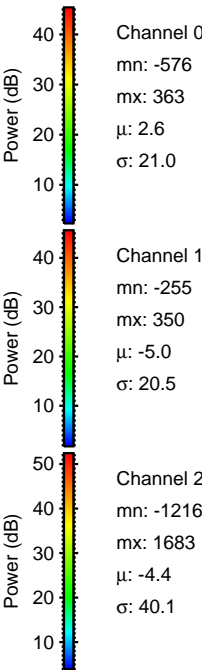
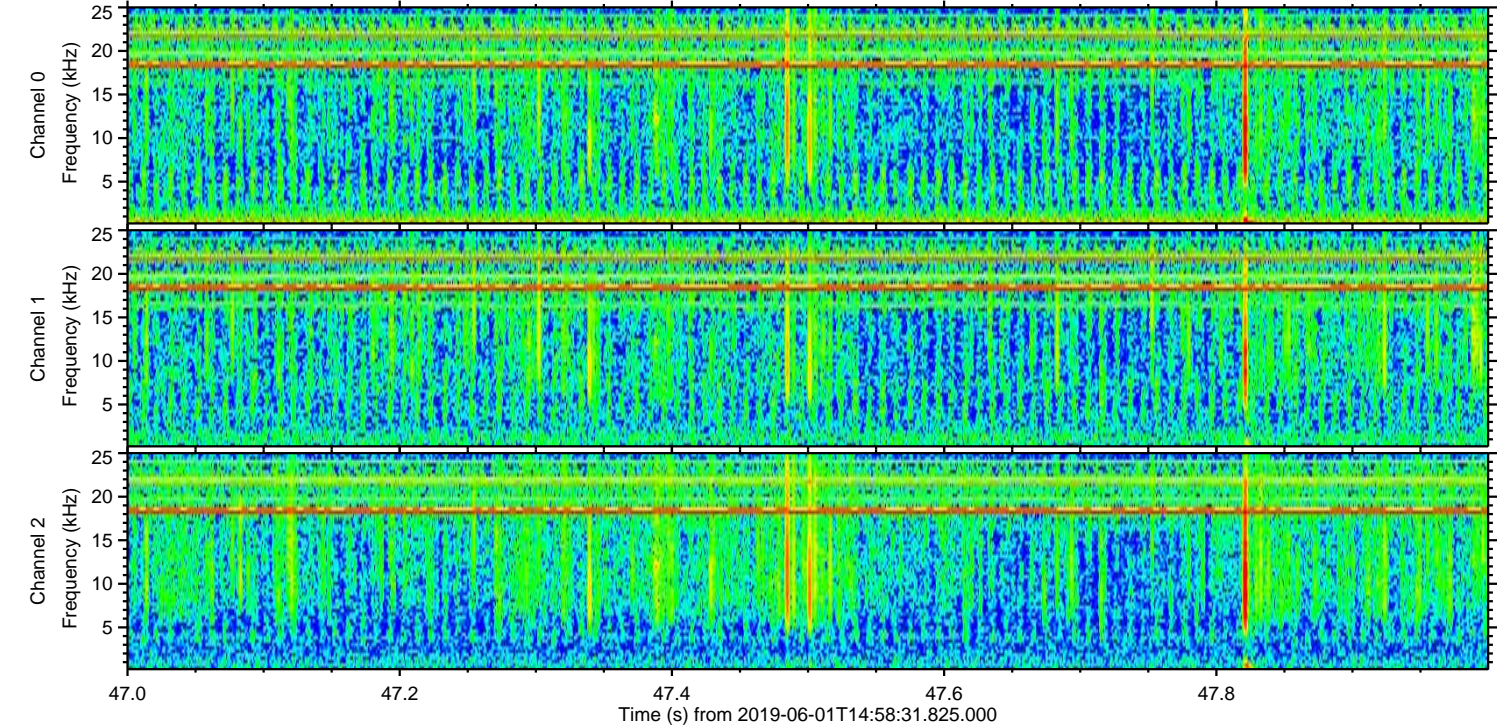
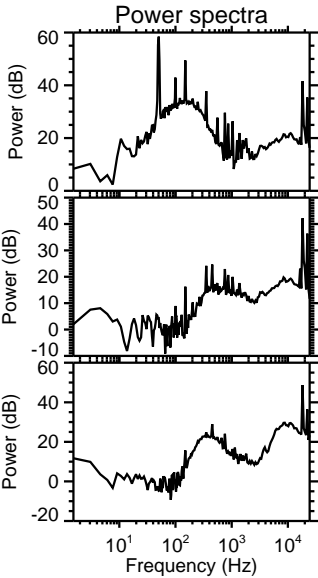
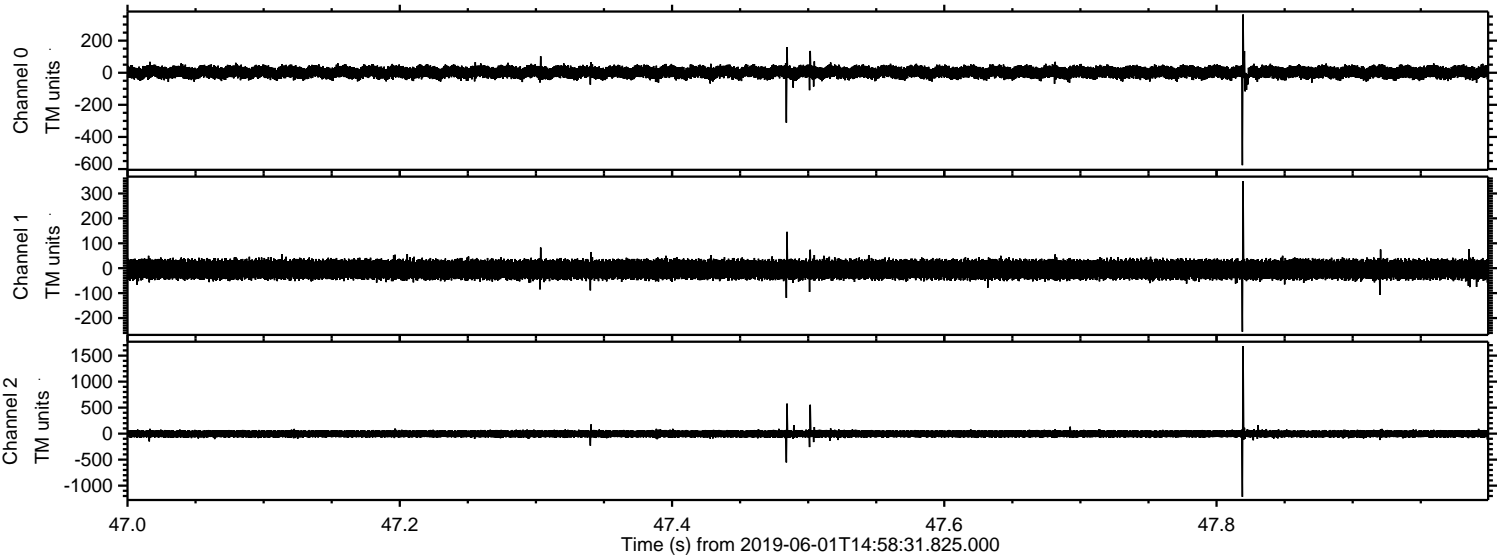


Channel 0
mn: -901
mx: 530
 μ : 2.7
 σ : 21.9

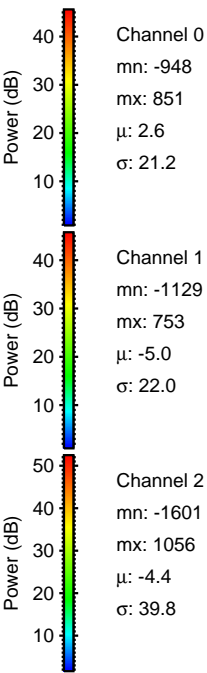
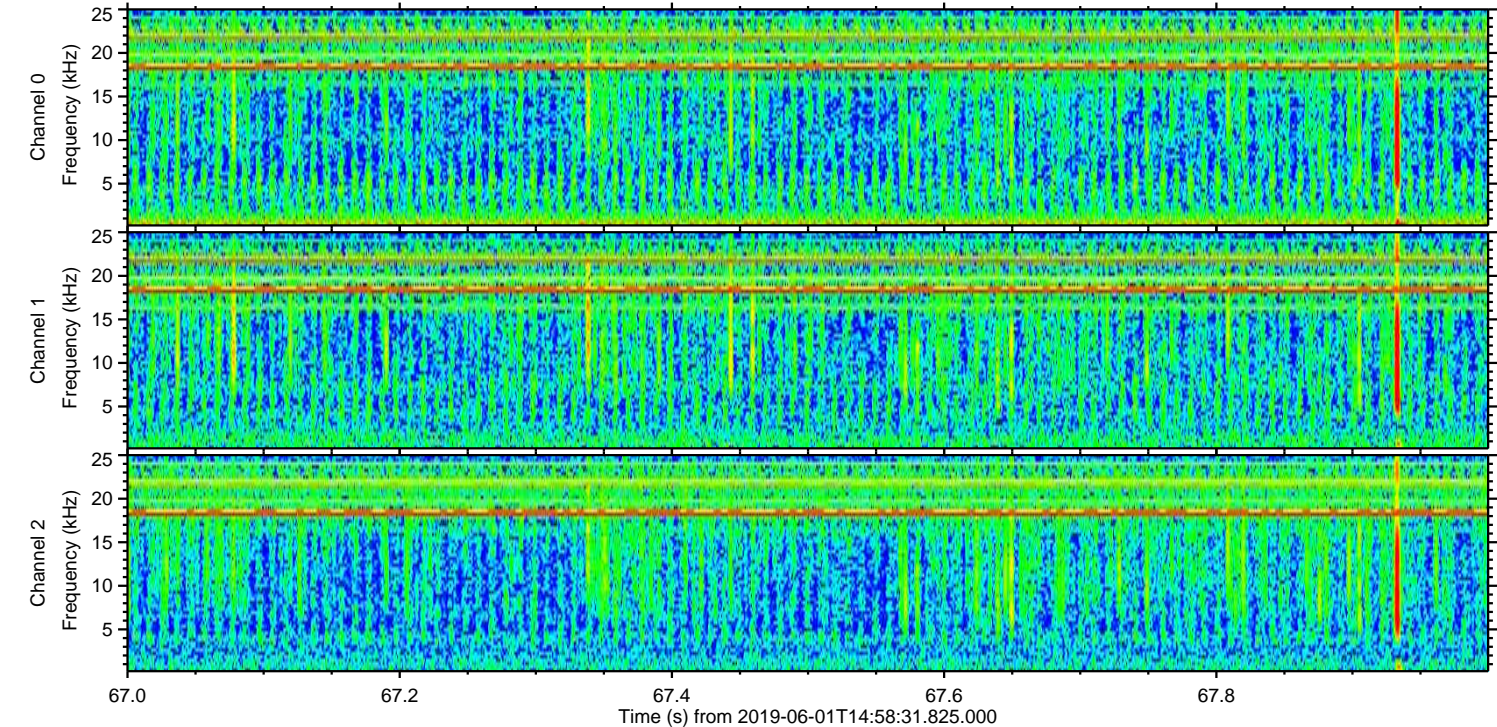
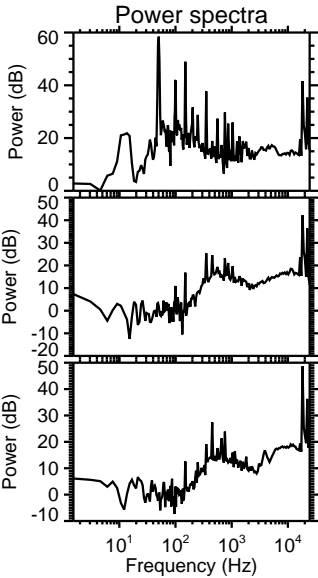
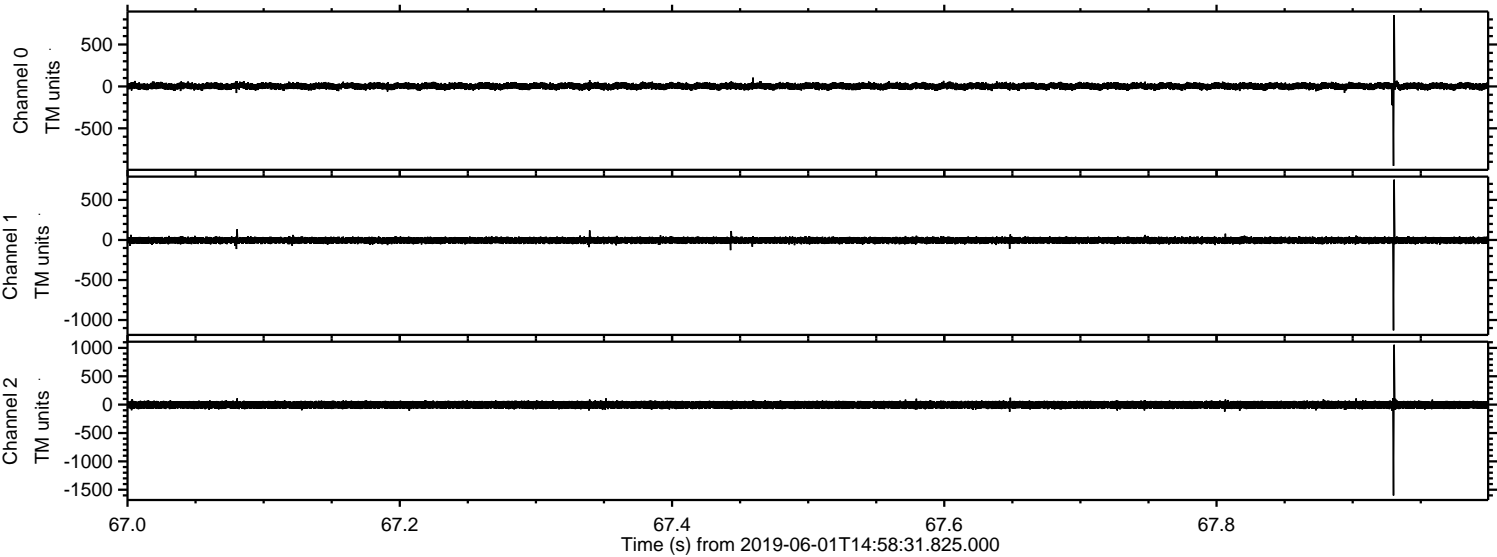
Channel 1
mn: -297
mx: 355
 μ : -5.0
 σ : 20.9

Channel 2
mn: -1146
mx: 1893
 μ : -4.5
 σ : 43.5

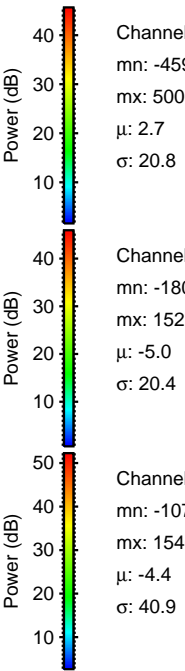
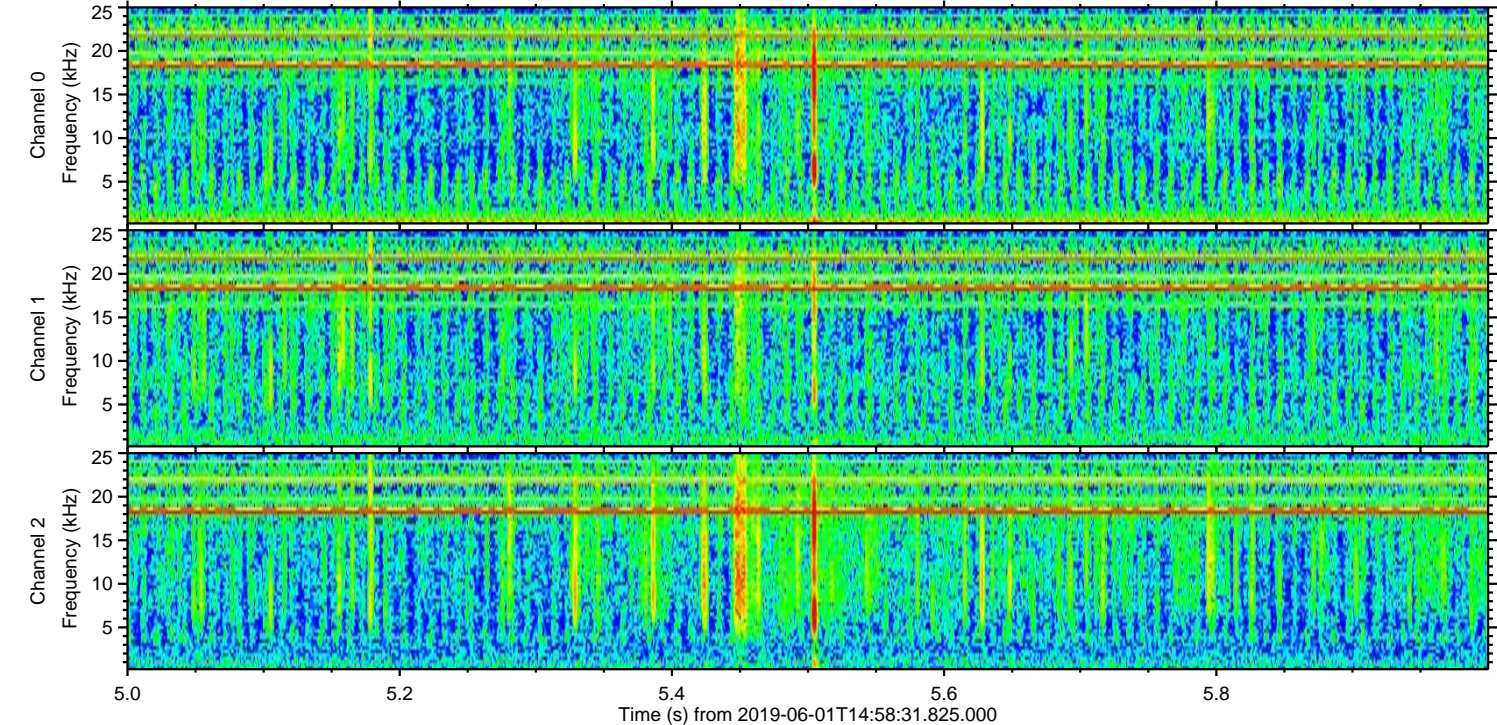
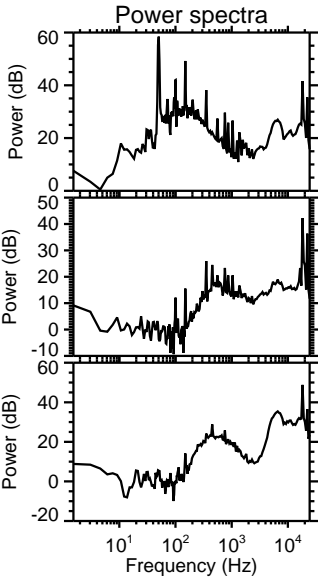
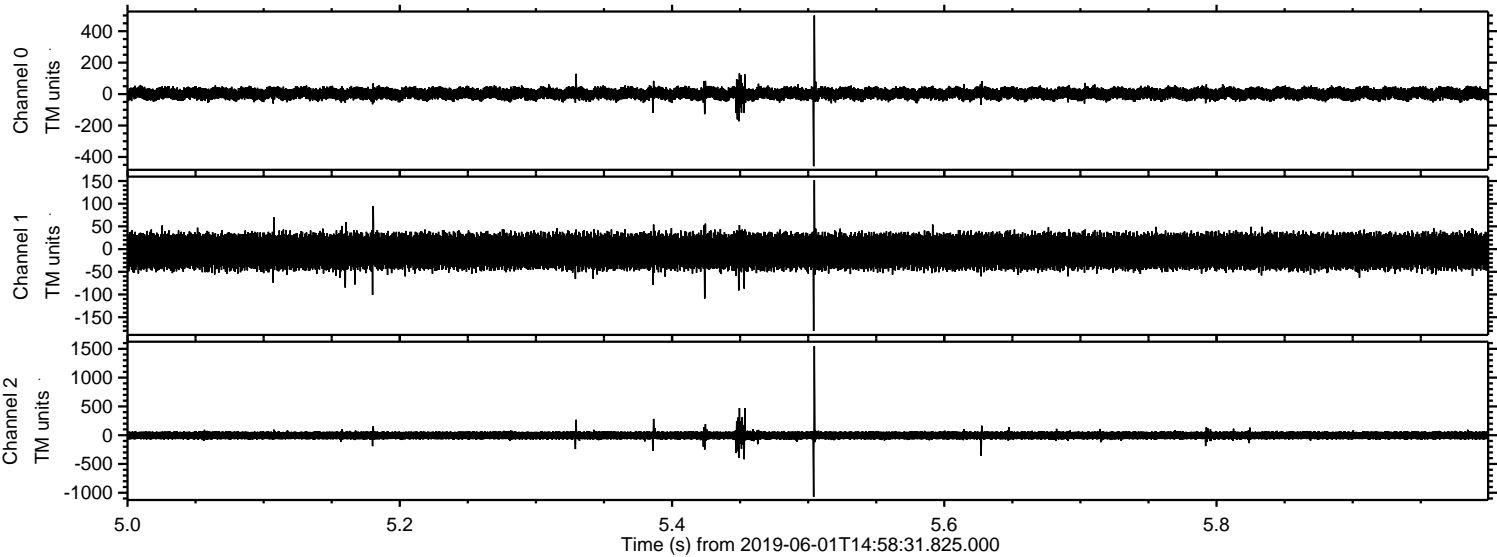
Processed Sat Jun 1 17:06:06 2019 by ELM ver.2012-10-06 from 001__elm20190601_145830__dat00.bin



Processed Sat Jun 1 17:06:07 2019 by ELM ver.2012-10-06 from 001__elm20190601_145830__dat00.bin



Processed Sat Jun 1 17:06:07 2019 by ELM ver.2012-10-06 from 001__elm20190601_145830__dat00.bin



Channel 0
mn: -459
mx: 500
 μ : 2.7
 σ : 20.8

Channel 1
mn: -180
mx: 152
 μ : -5.0
 σ : 20.4

Channel 2
mn: -1072
mx: 1546
 μ : -4.4
 σ : 40.9

