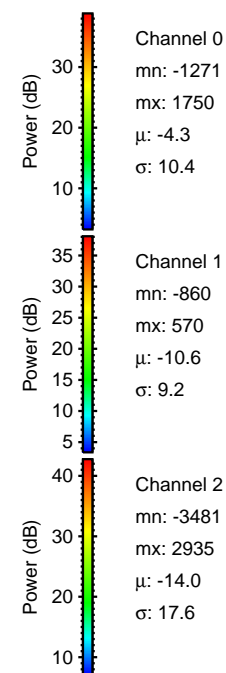
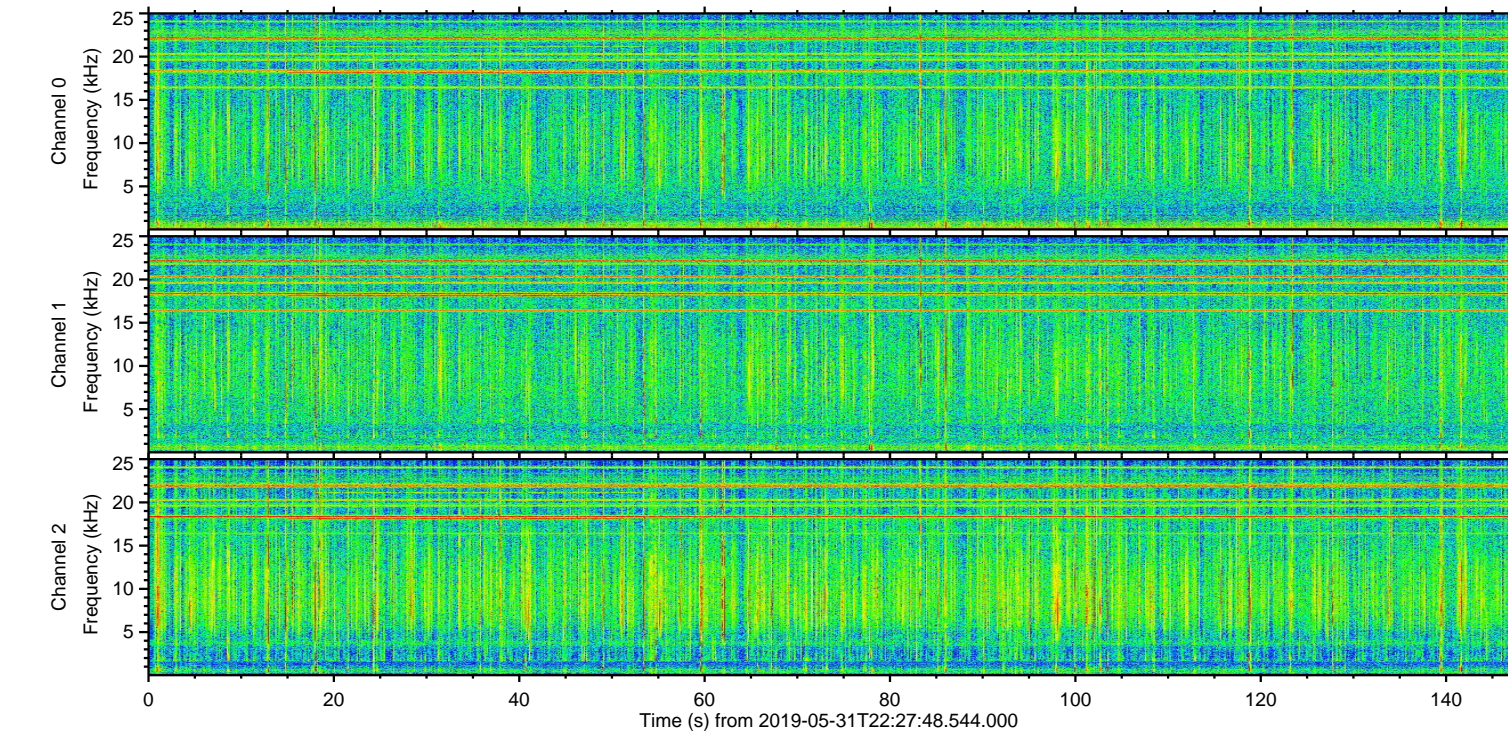
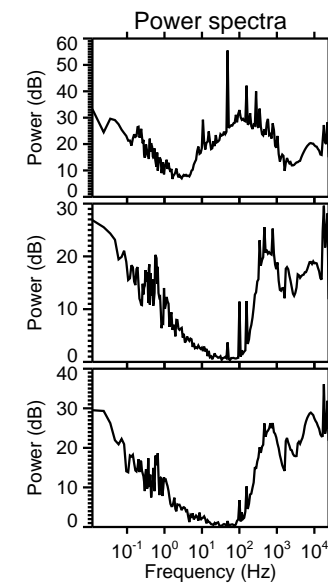
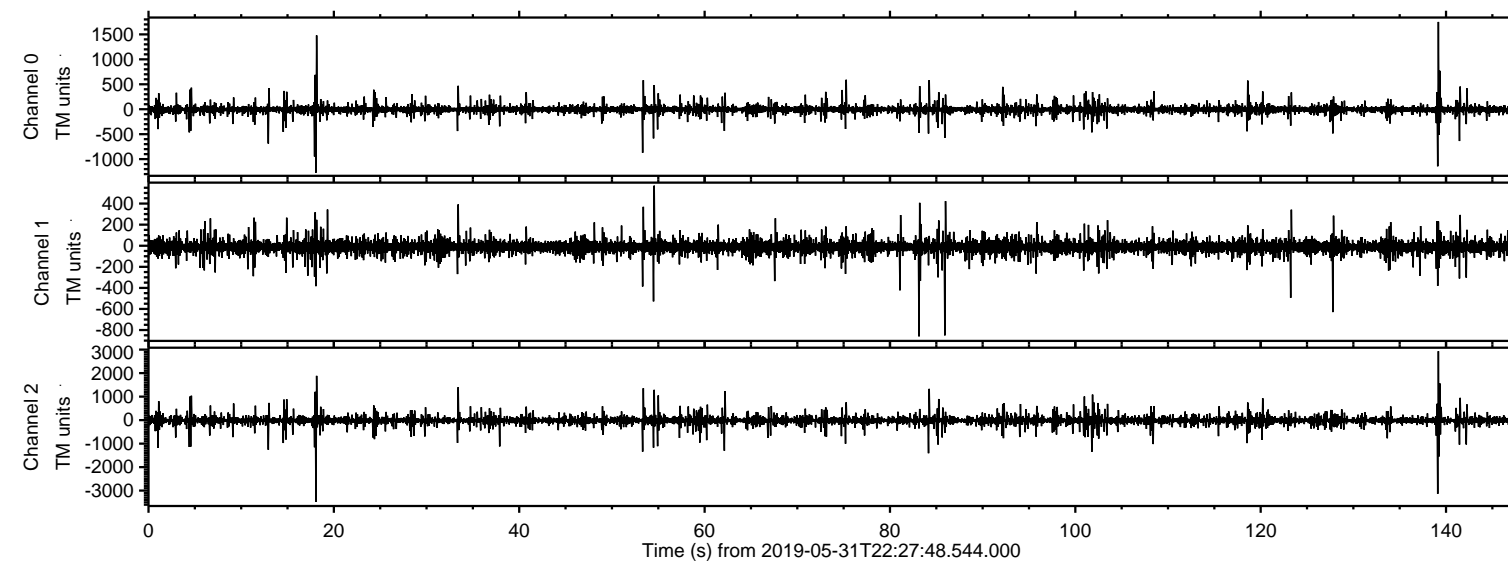


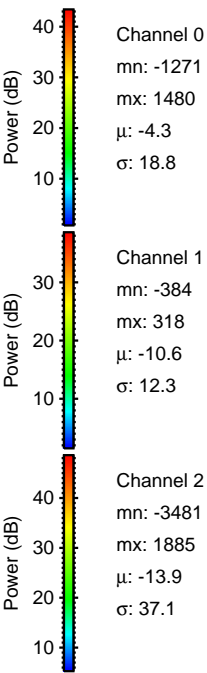
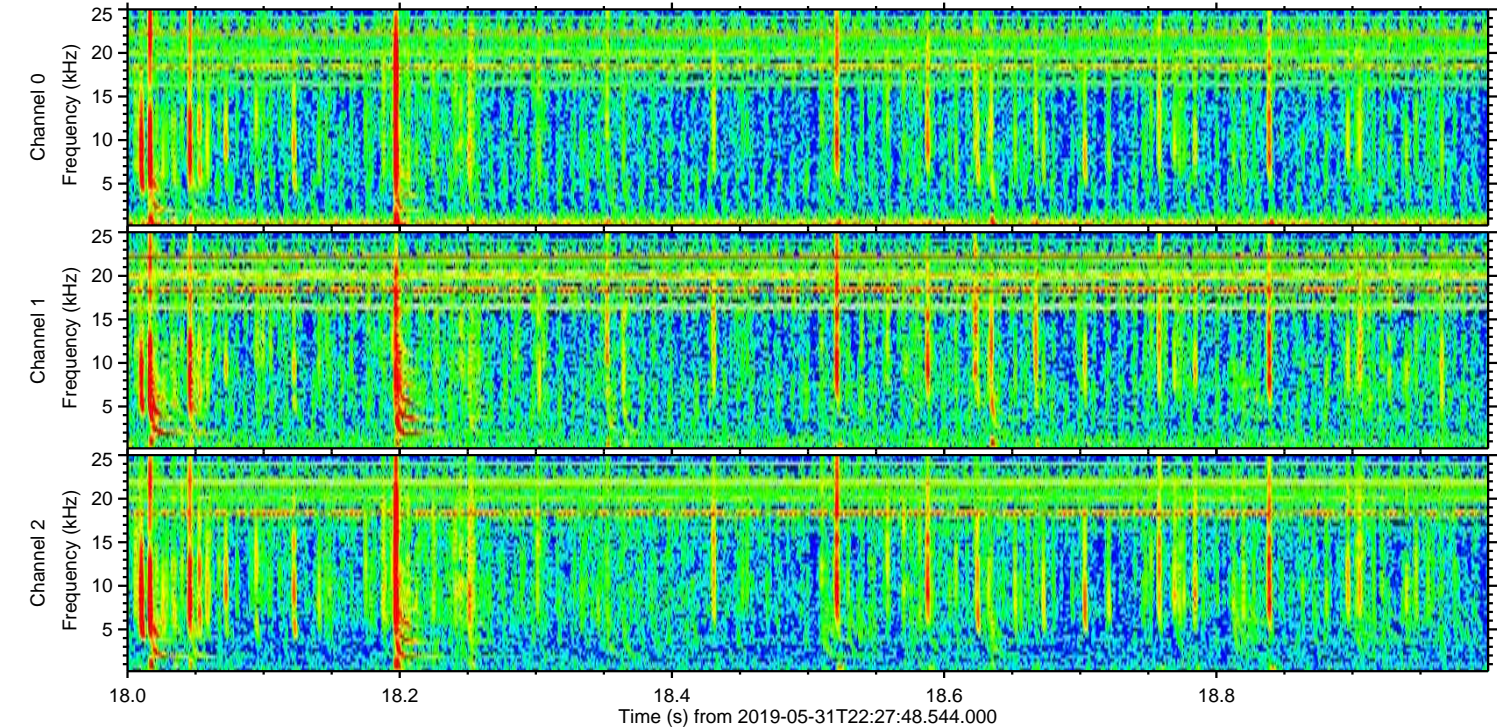
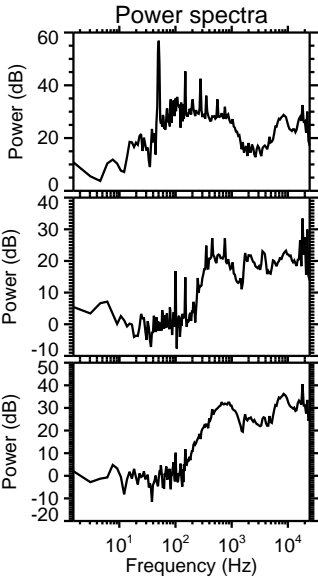
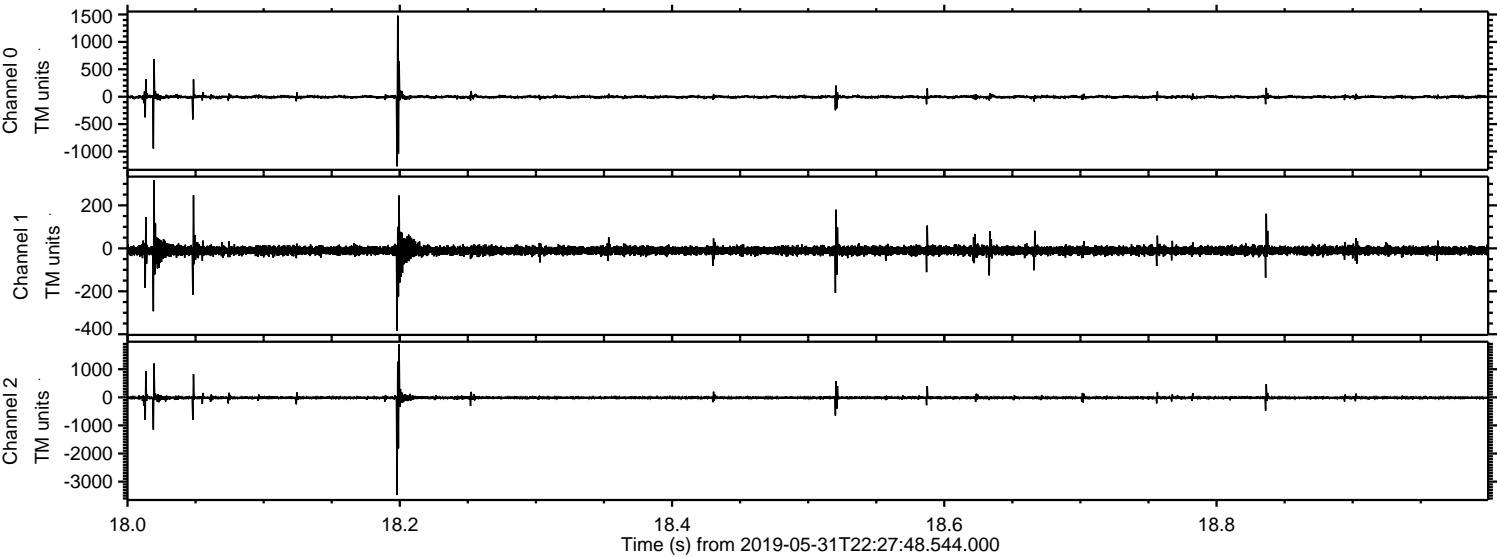
# ELMAVAN 3D WAVEFORMS (Measured data sampled at 50 kHz) 51000 packets of 144 samples from 2019-05-31T22:27:48.544.000.

Processed Sat Jun 1 00:36:07 2019 by ELM ver.2012-10-06 from 001\_\_elm20190531\_222747\_\_dat00.bin





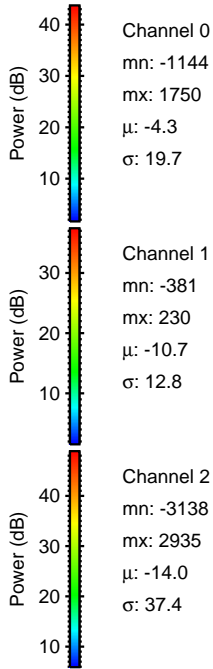
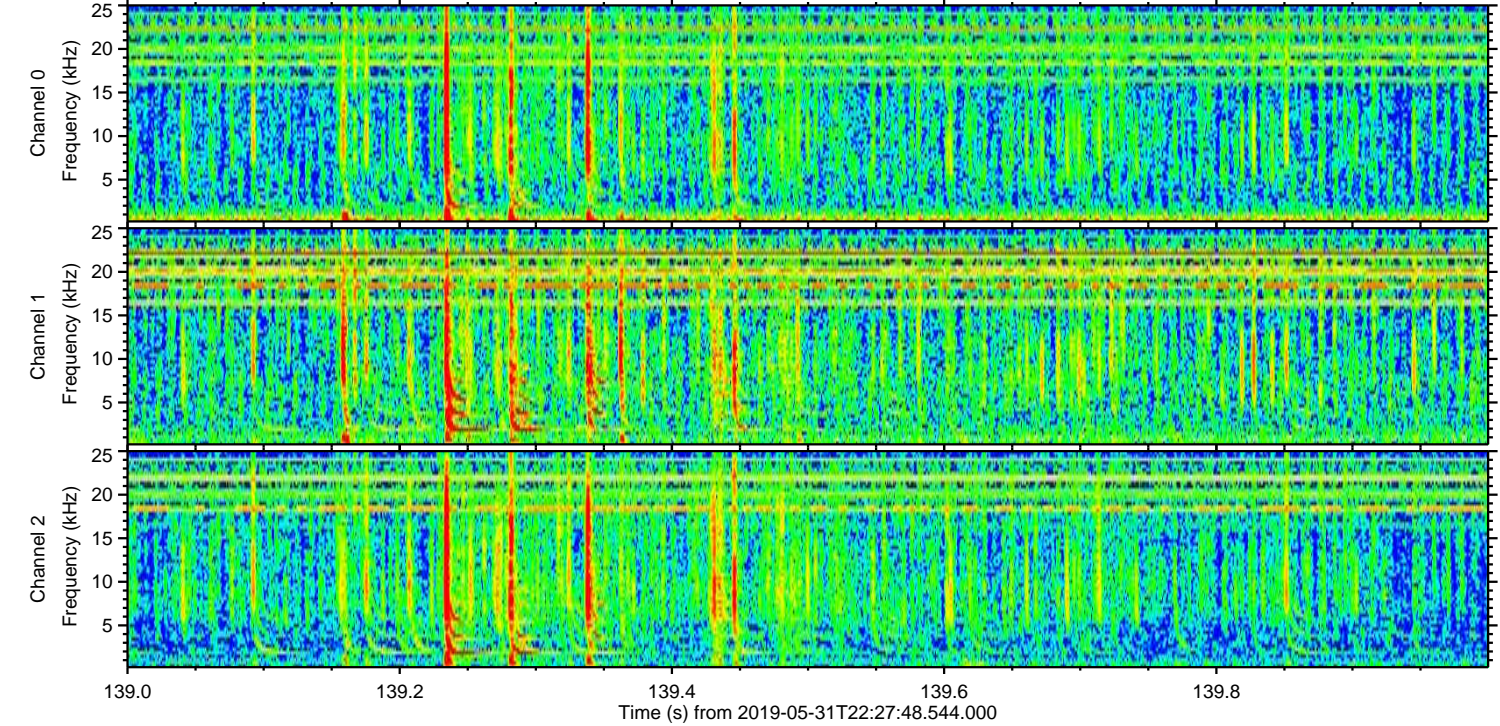
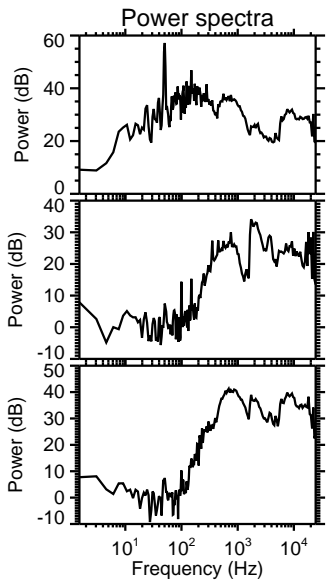
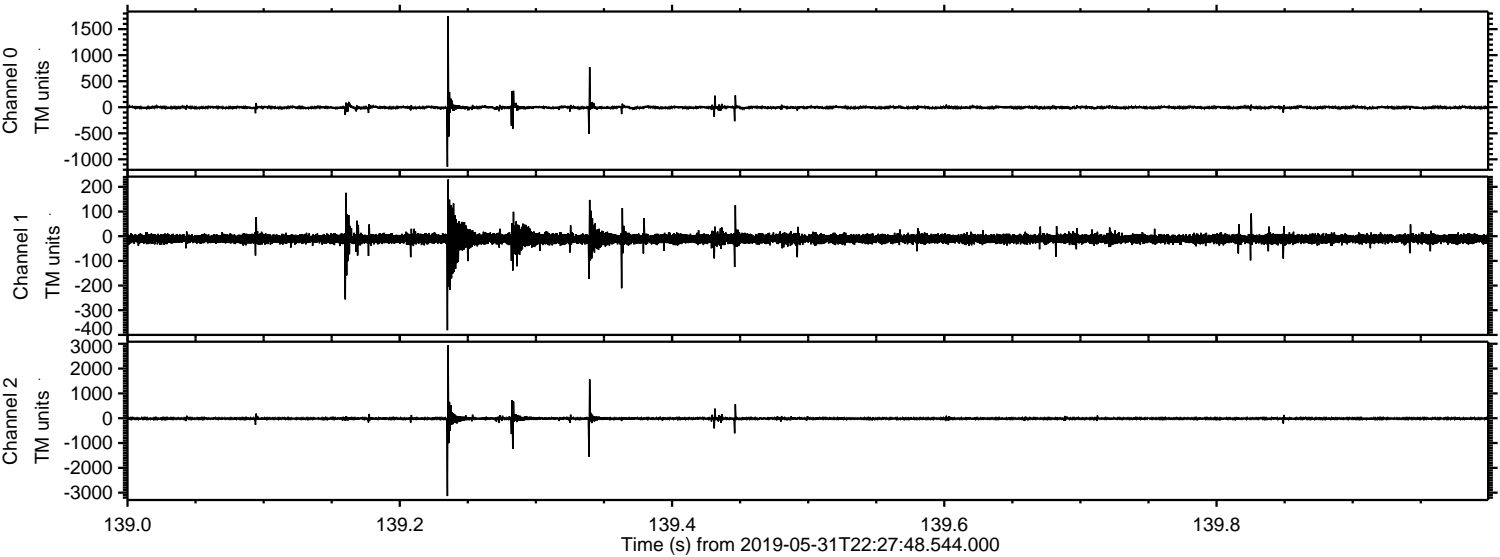
Processed Sat Jun 1 00:36:16 2019 by ELM ver.2012-10-06 from 001\_\_elm20190531\_222747\_\_dat00.bin





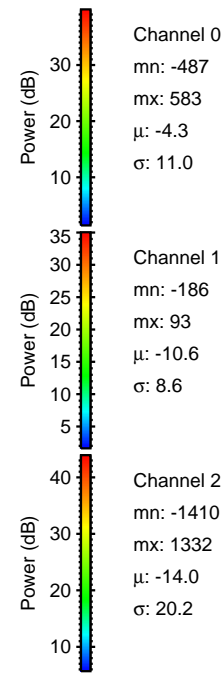
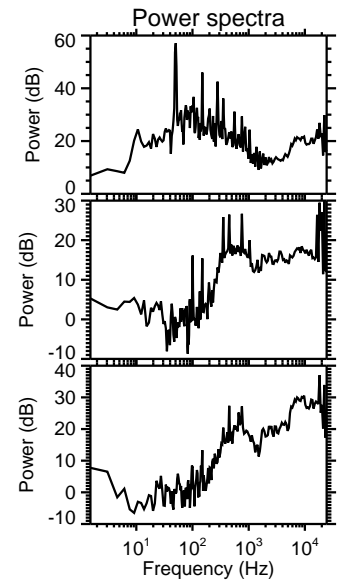
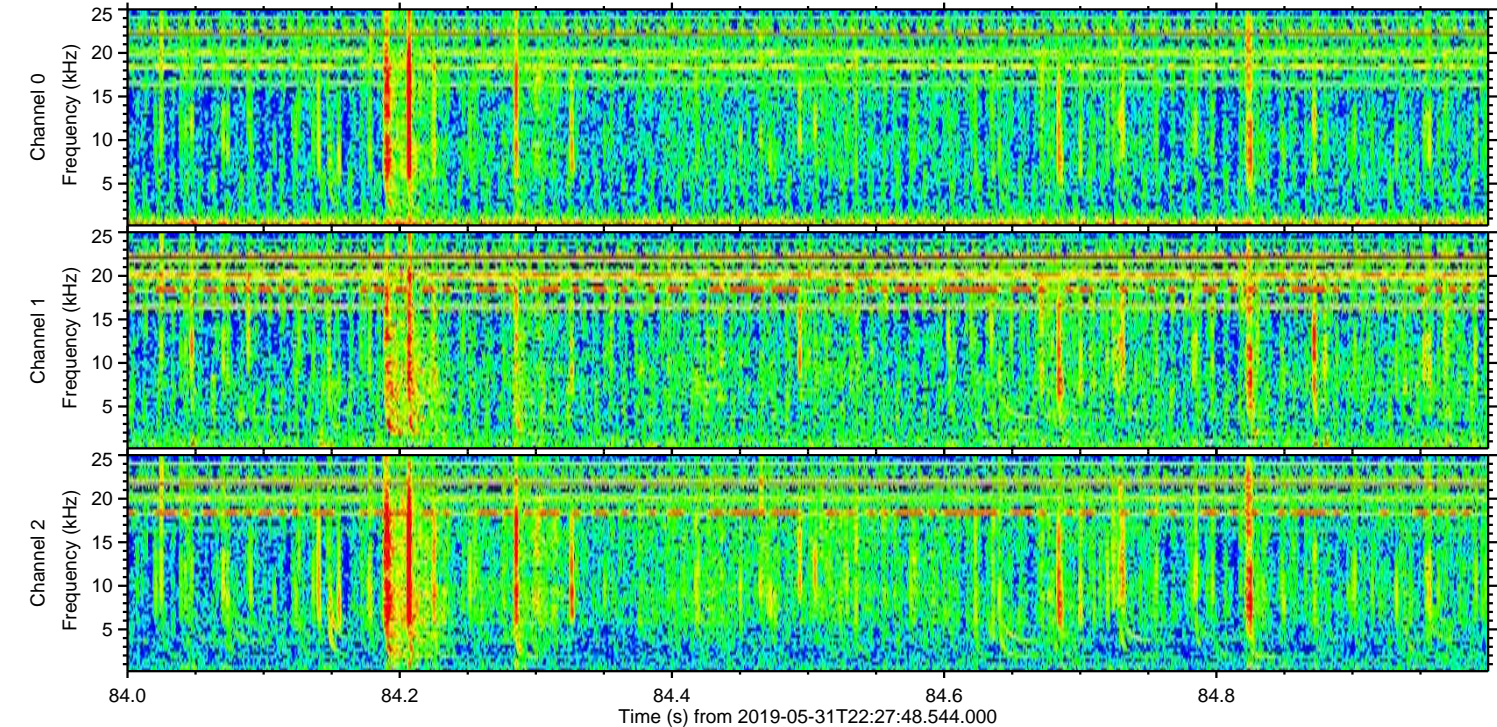
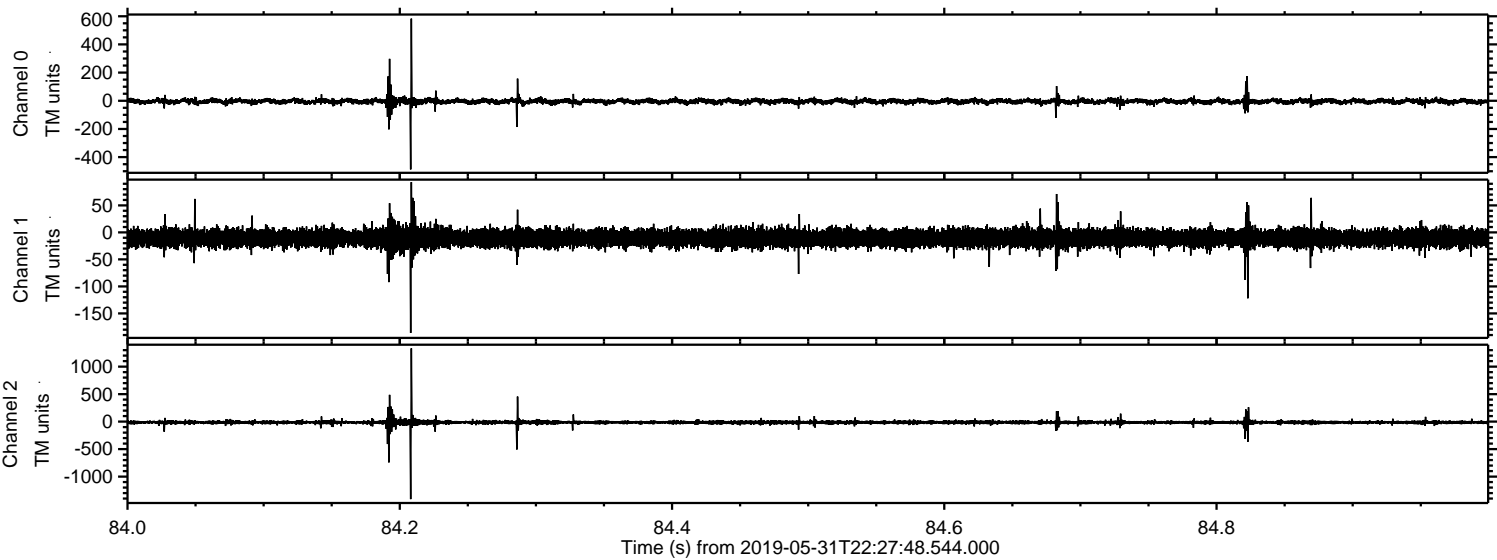
ELMAVAN 3D WAVEFORMS (Measured data sampled at 50 kHz) 51000 packets of 144 samples from 2019-05-31T22:27:48.544.000. Part 140/147

Processed Sat Jun 1 00:36:17 2019 by ELM ver.2012-10-06 from 001\_\_elm20190531\_222747\_\_dat00.bin



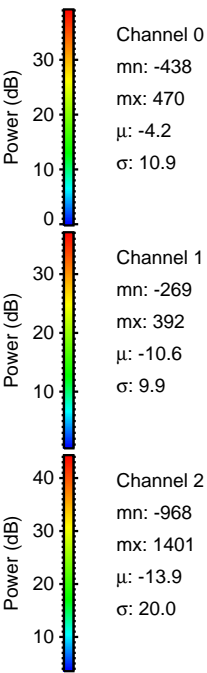
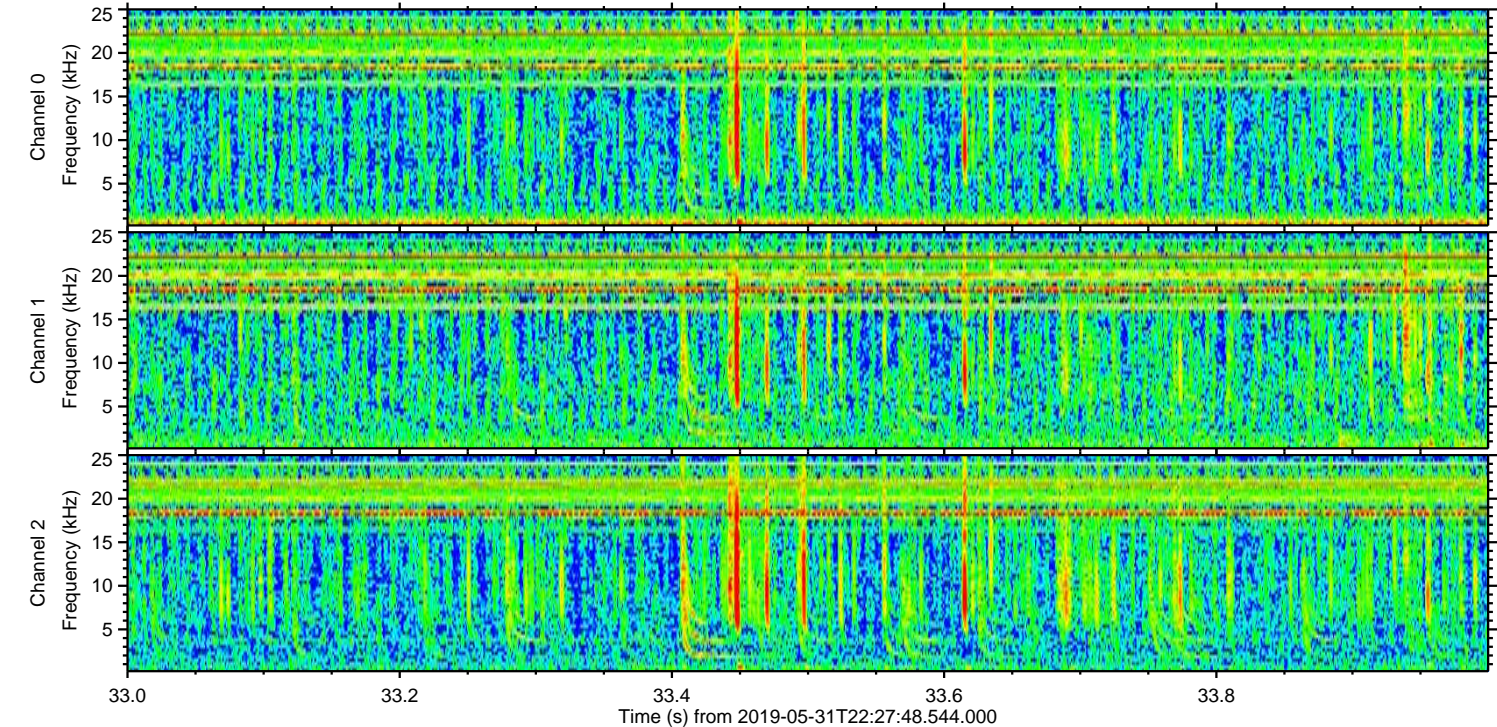
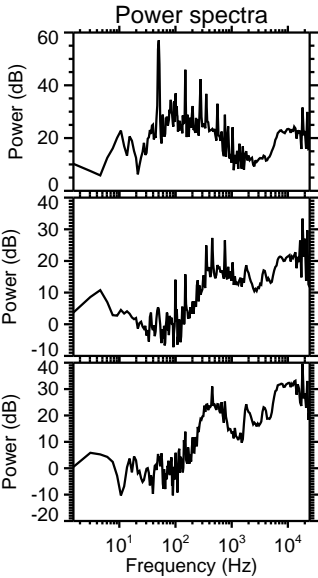
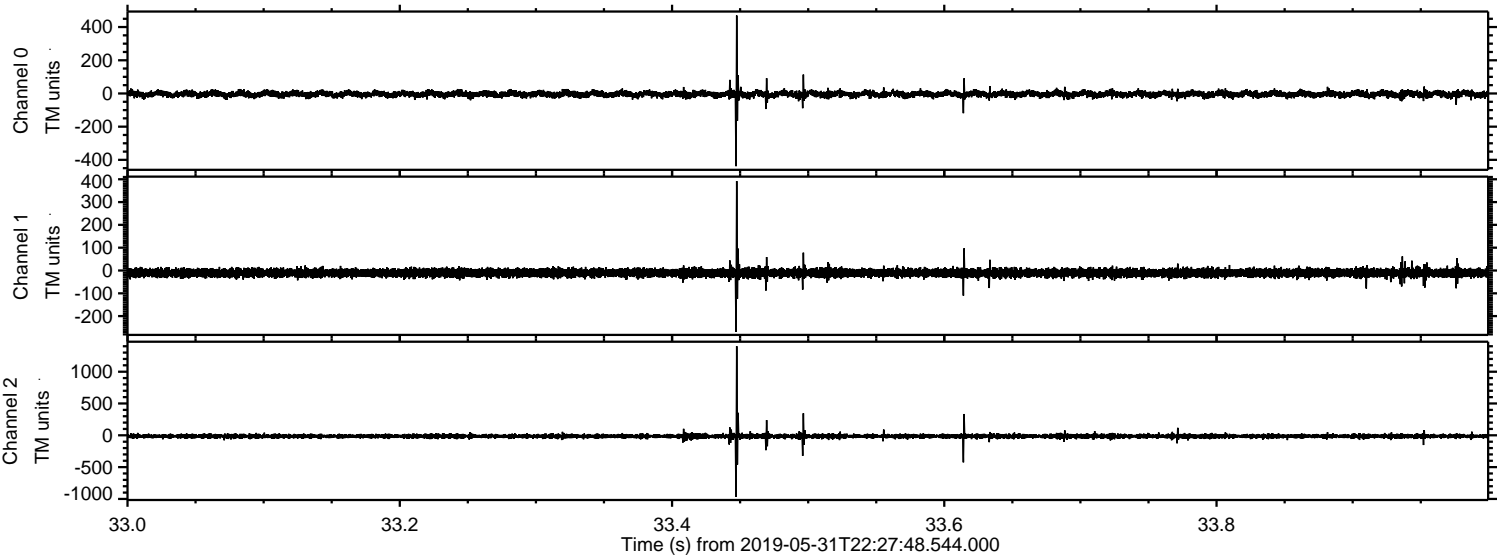


Processed Sat Jun 1 00:36:18 2019 by ELM ver.2012-10-06 from 001\_\_elm20190531\_222747\_\_dat00.bin



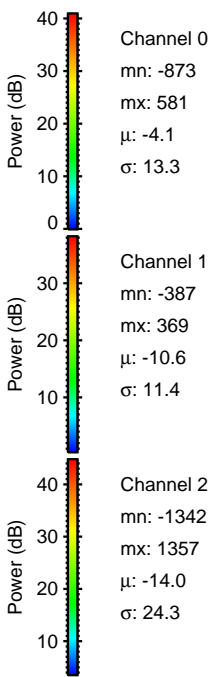
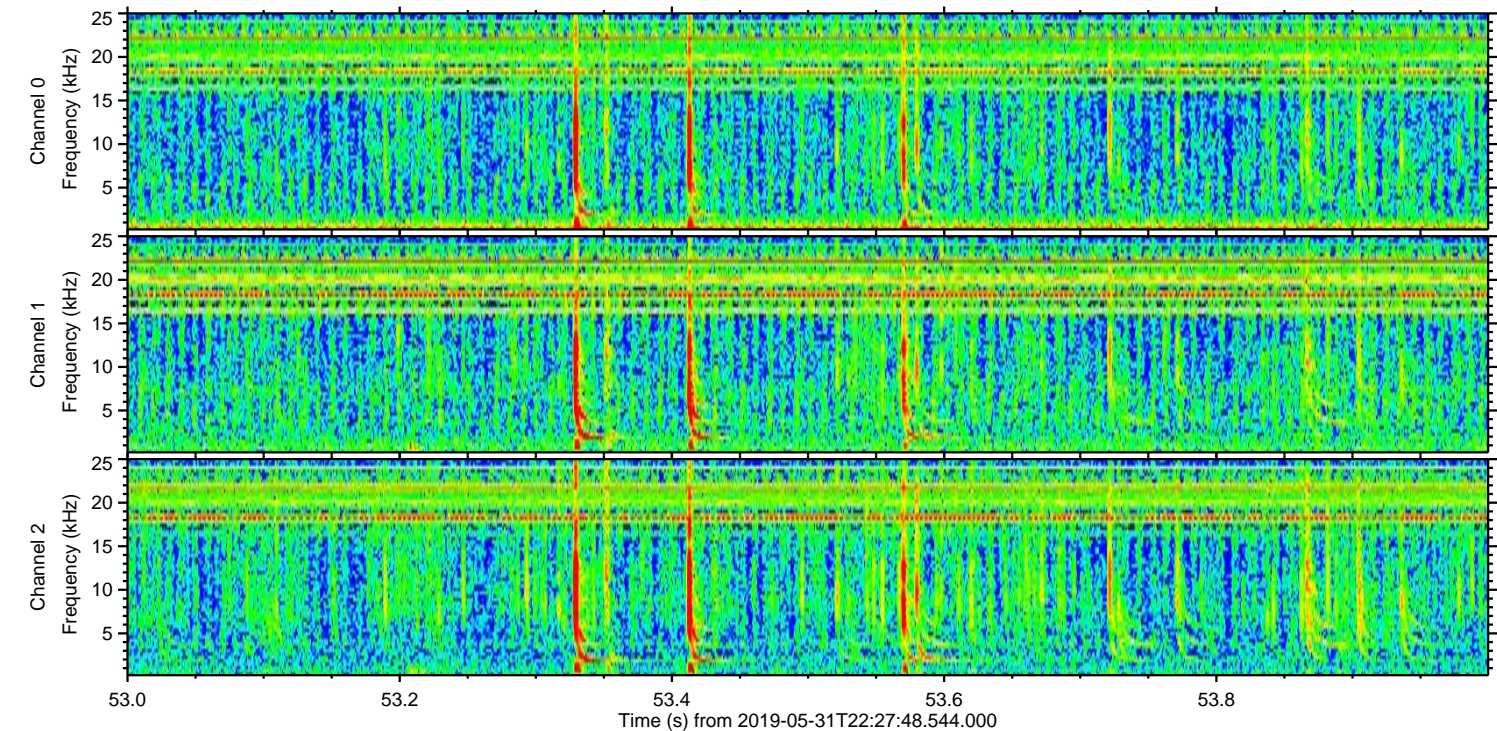
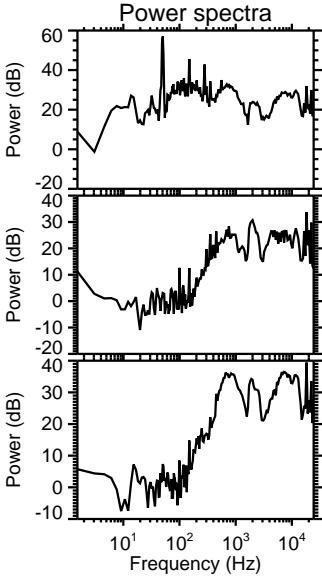
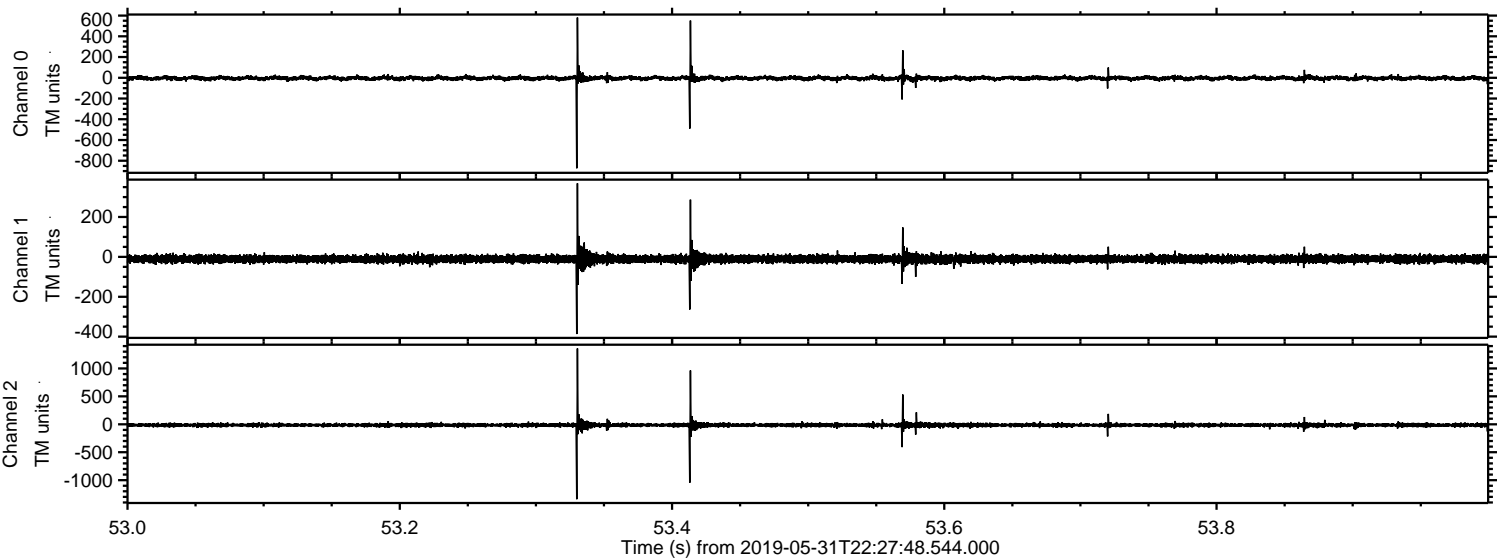


Processed Sat Jun 1 00:36:19 2019 by ELM ver.2012-10-06 from 001\_\_elm20190531\_222747\_\_dat00.bin



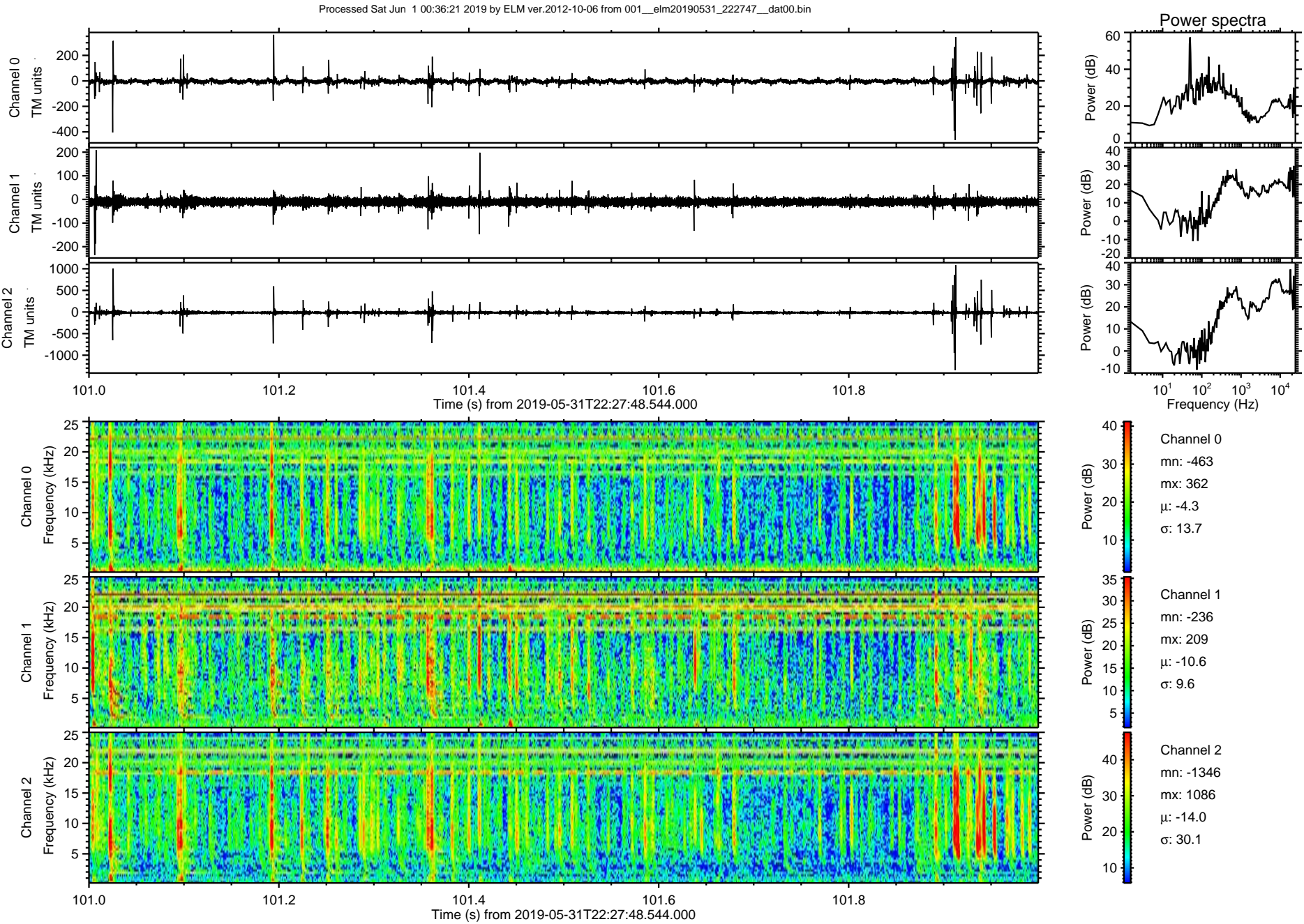


Processed Sat Jun 1 00:36:20 2019 by ELM ver.2012-10-06 from 001\_\_elm20190531\_222747\_\_dat00.bin



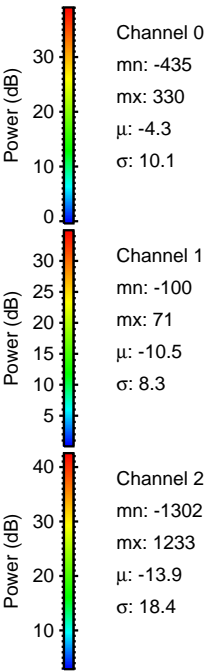
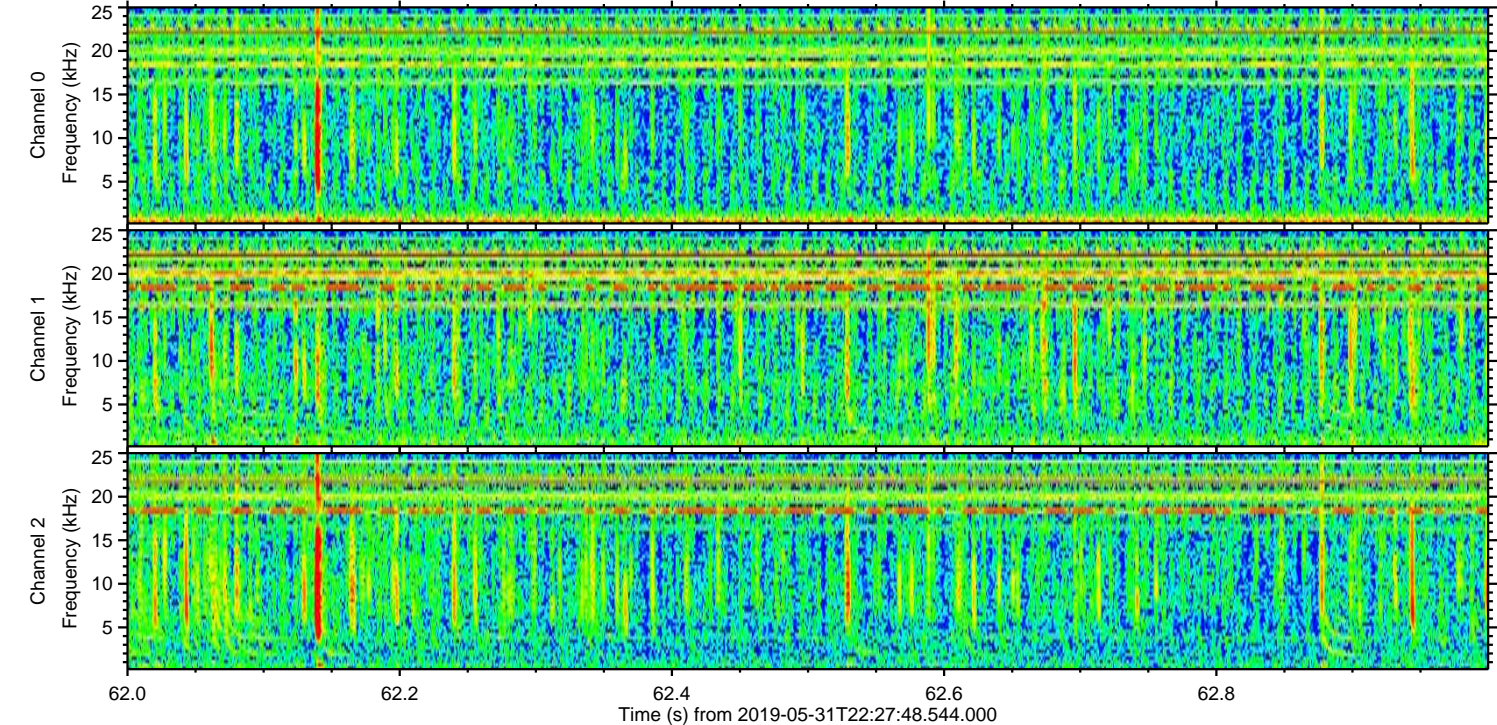
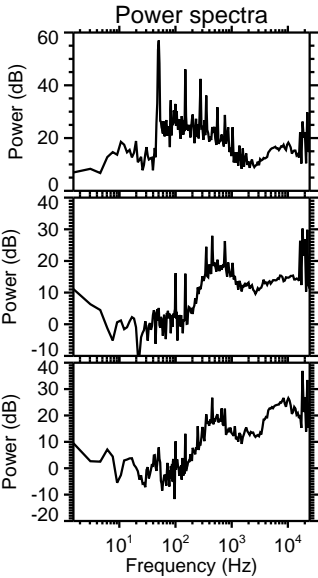
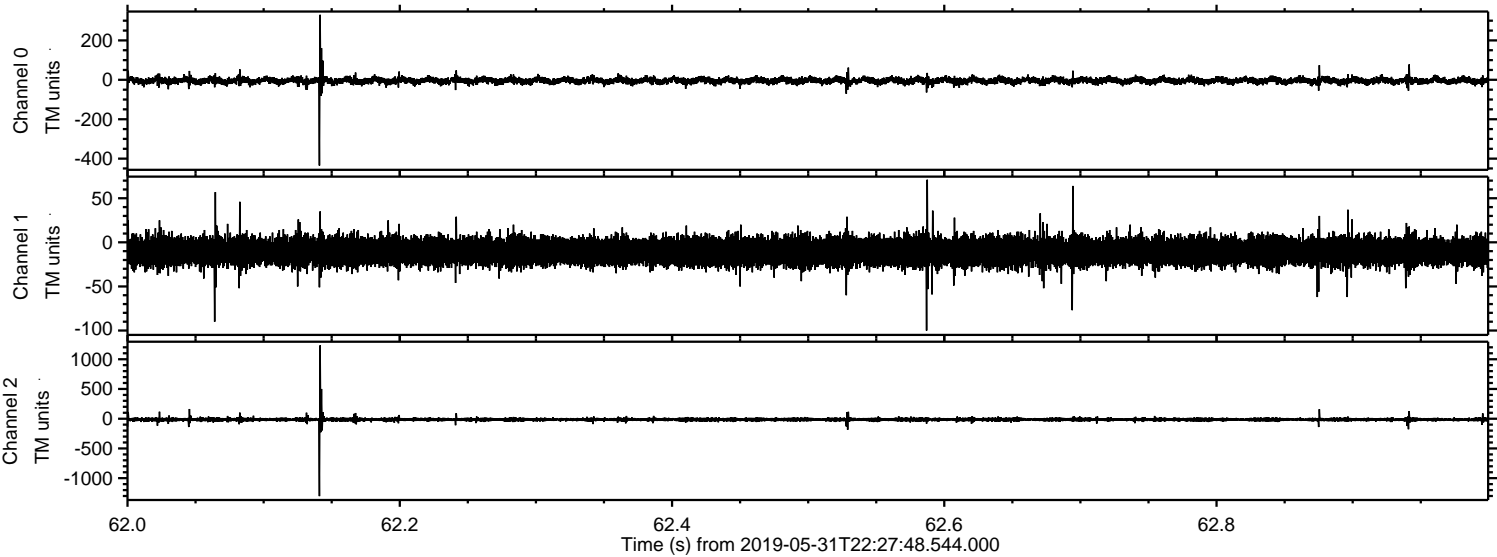


ELMAVAN 3D WAVEFORMS (Measured data sampled at 50 kHz) 51000 packets of 144 samples from 2019-05-31T22:27:48.544.000. Part 102/147



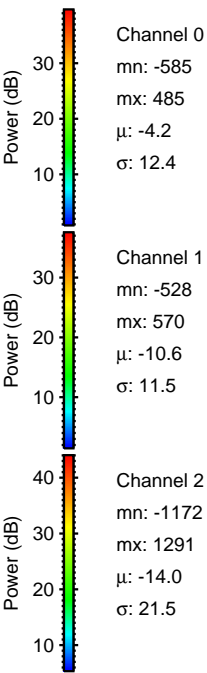
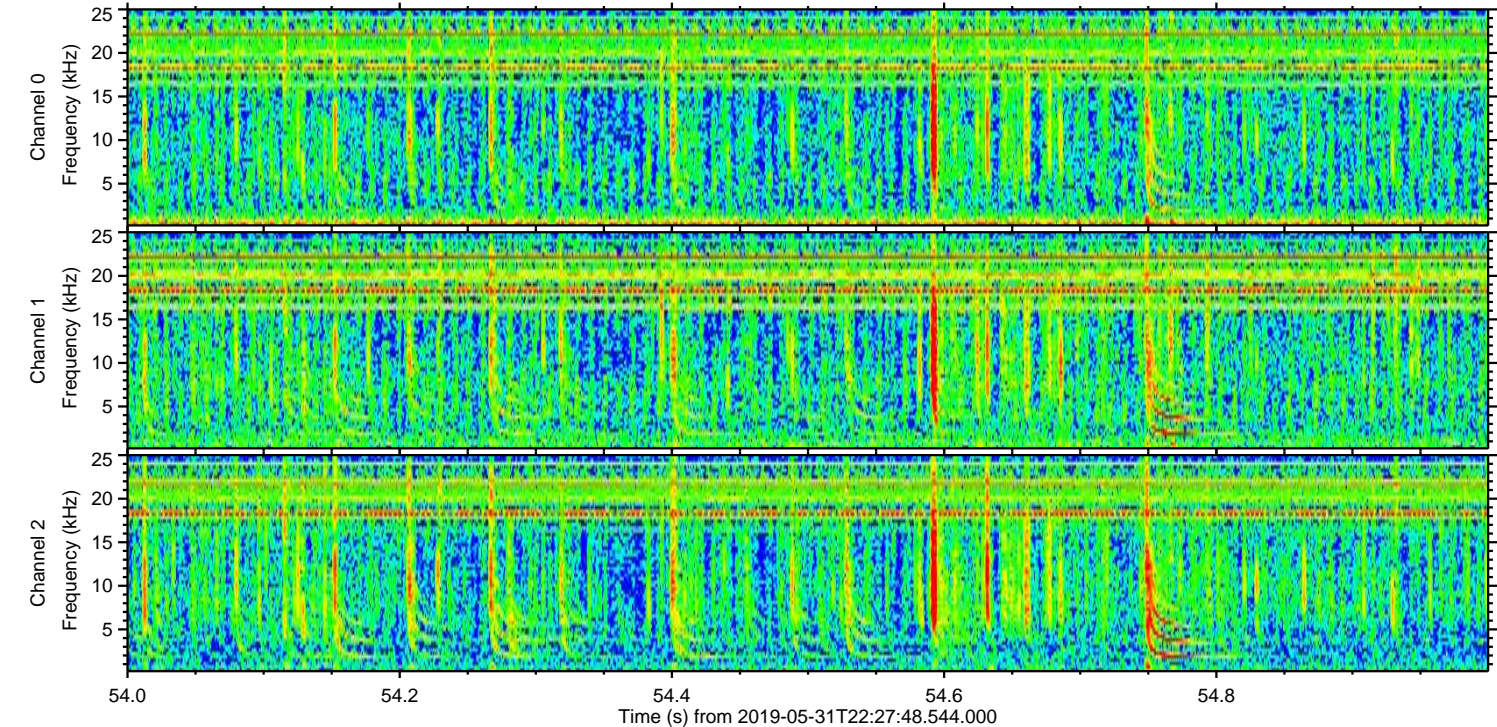
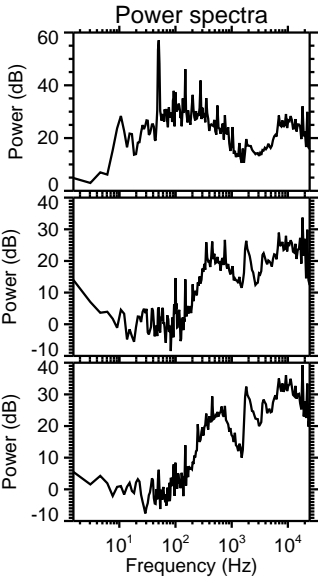
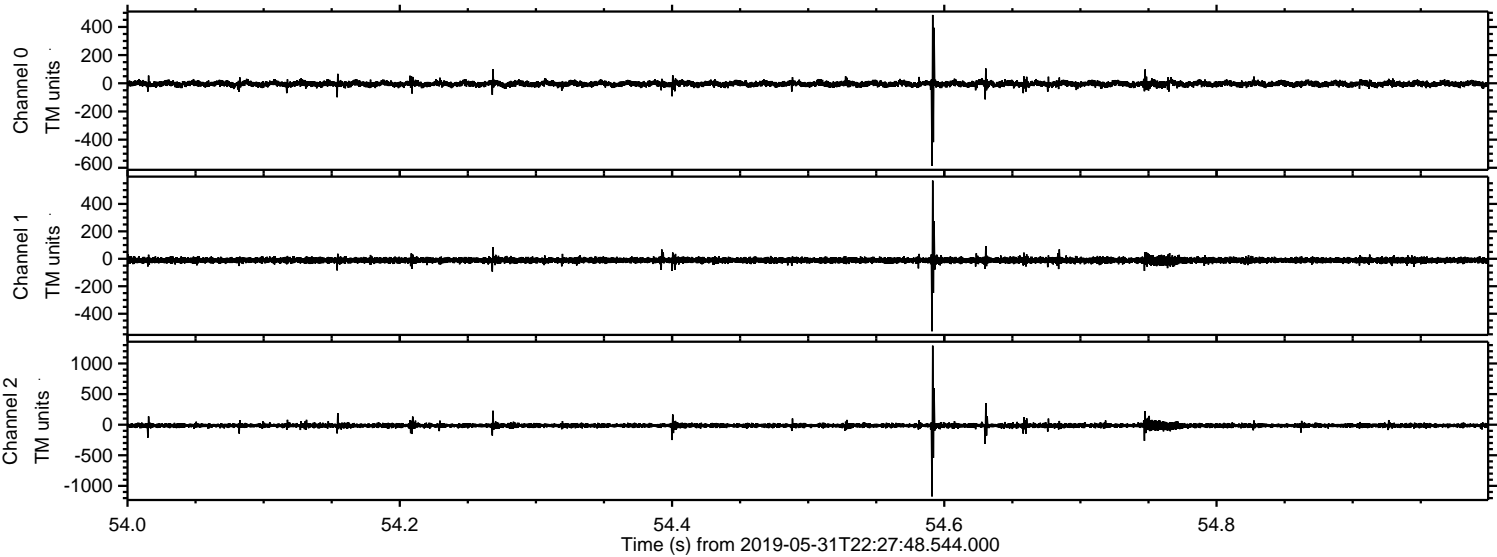


Processed Sat Jun 1 00:36:21 2019 by ELM ver.2012-10-06 from 001\_\_elm20190531\_222747\_\_dat00.bin





Processed Sat Jun 1 00:36:22 2019 by ELM ver.2012-10-06 from 001\_\_elm20190531\_222747\_\_dat00.bin





ELMAVAN 3D WAVEFORMS (Measured data sampled at 50 kHz) 51000 packets of 144 samples from 2019-05-31T22:27:48.544.000. Part 13/147

Processed Sat Jun 1 00:36:23 2019 by ELM ver.2012-10-06 from 001\_\_elm20190531\_222747\_\_dat00.bin

