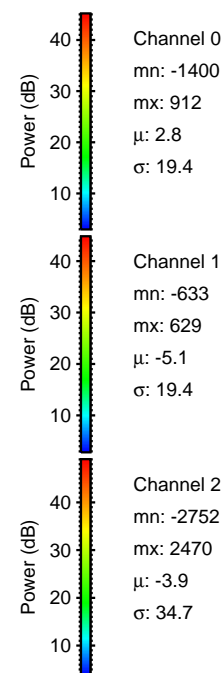
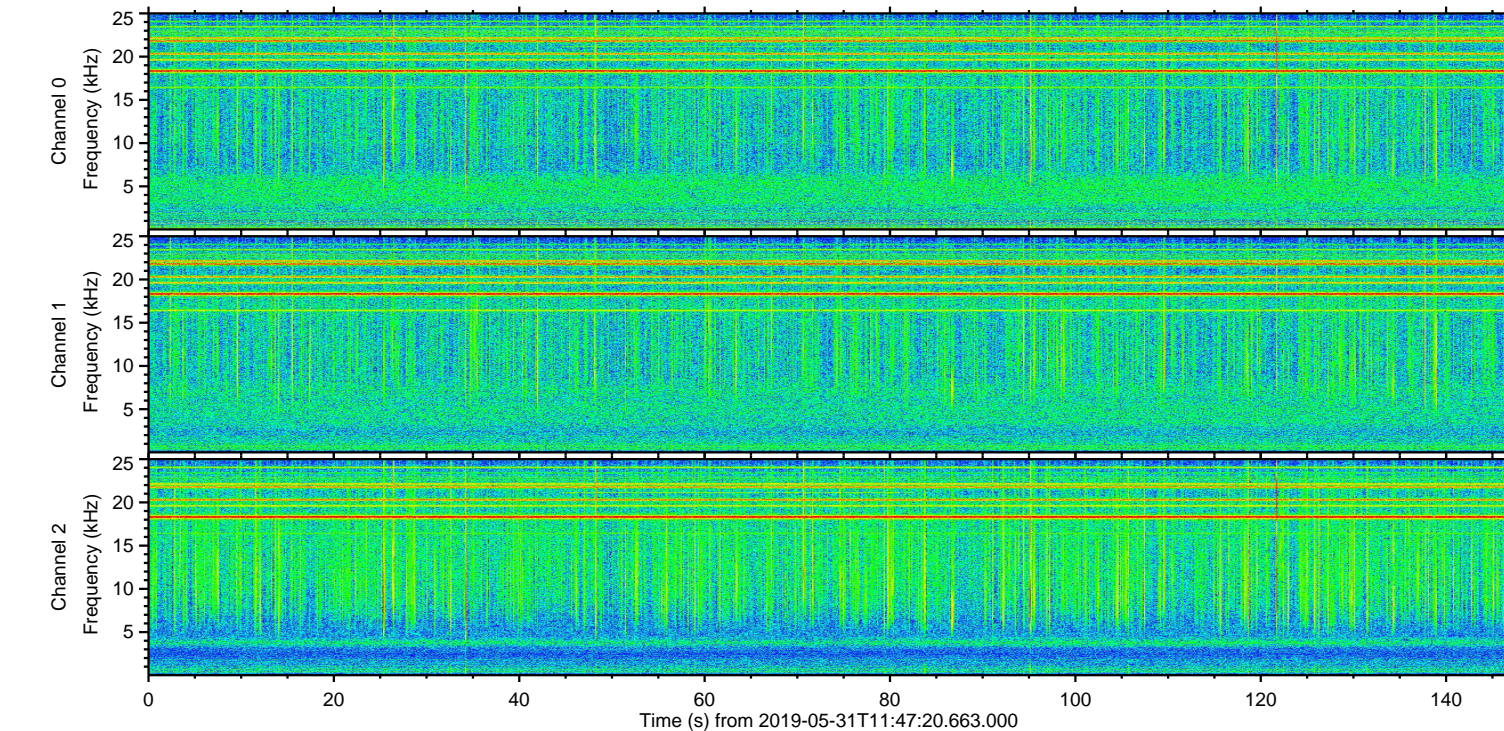
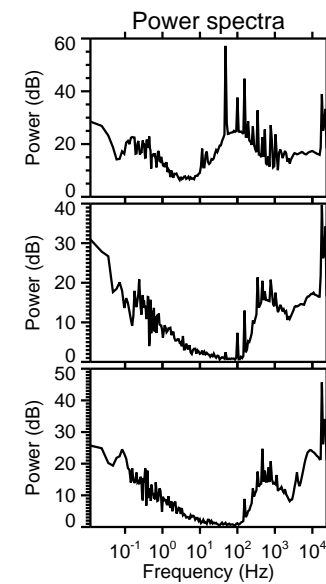
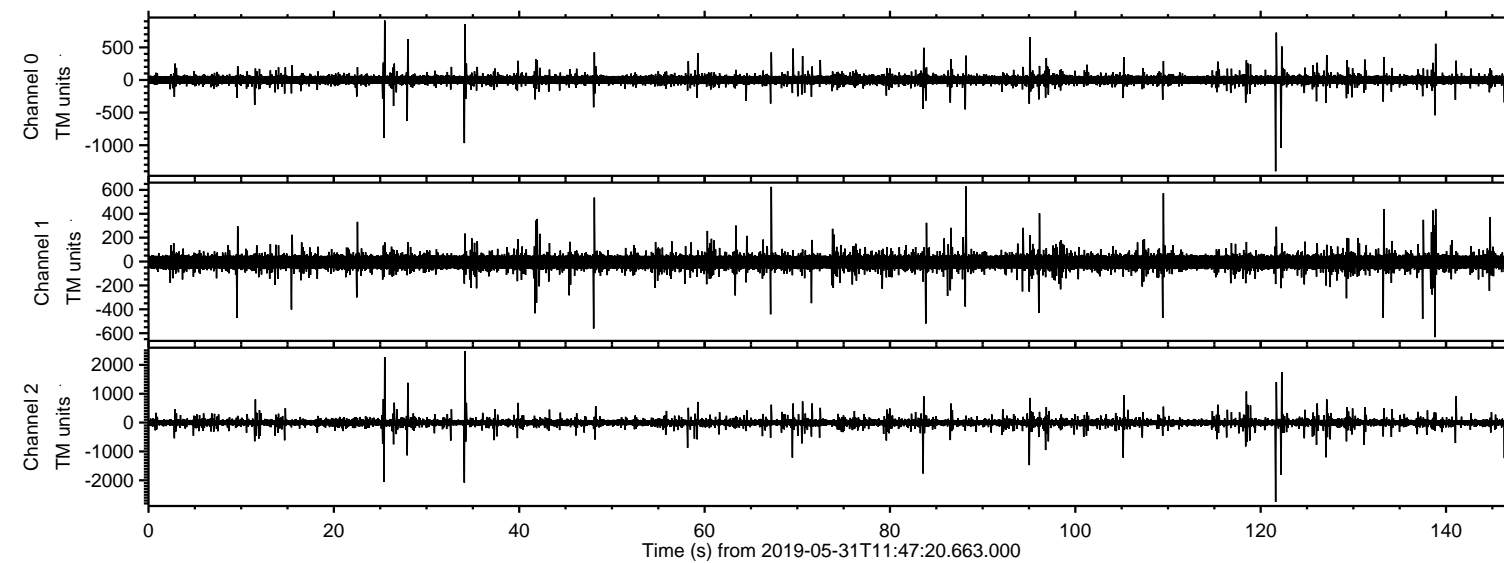


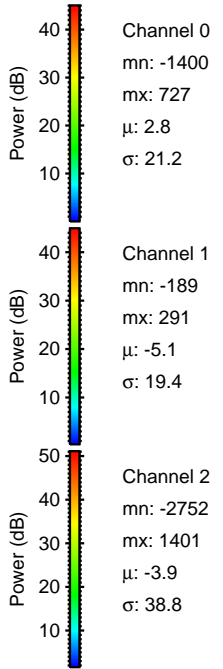
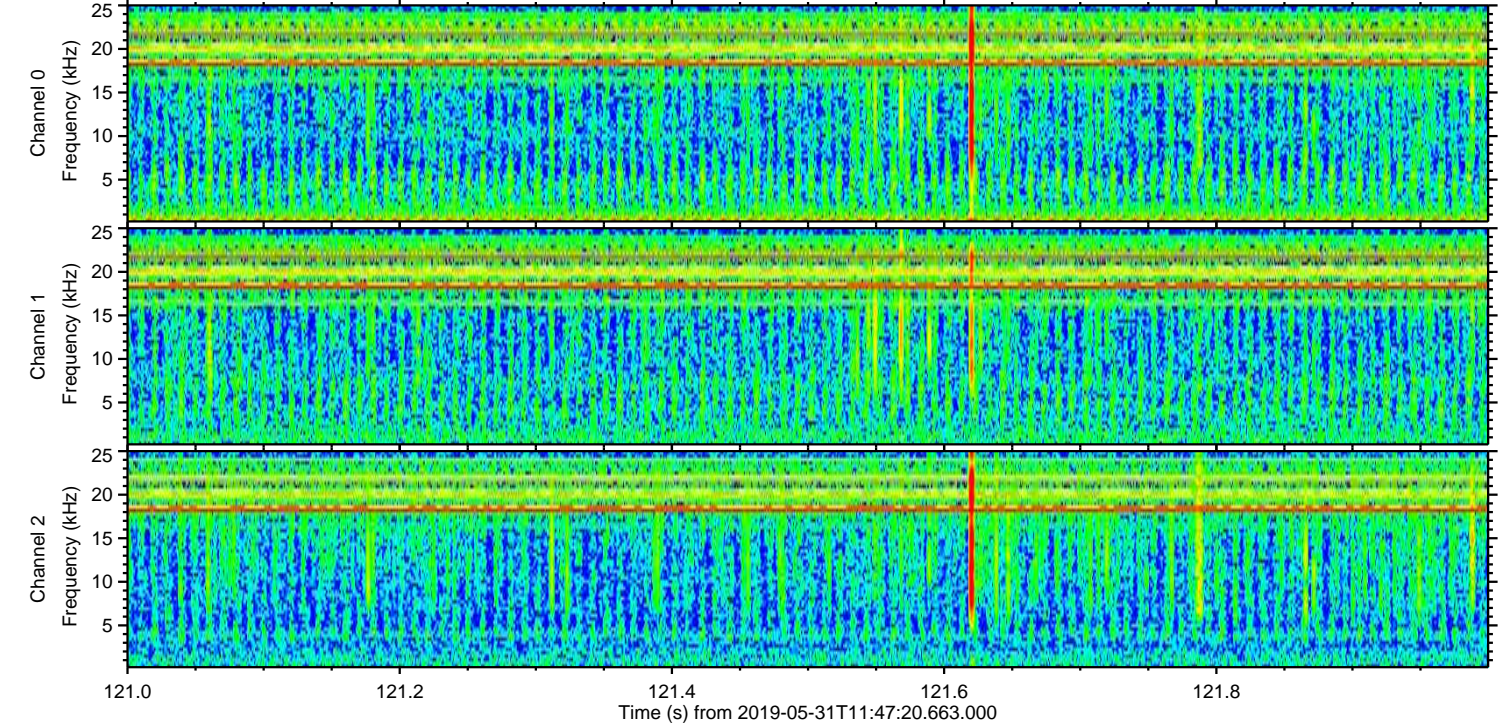
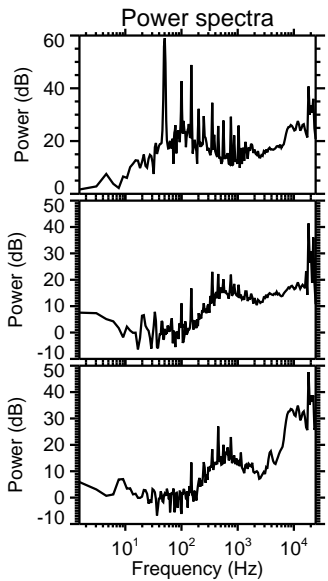
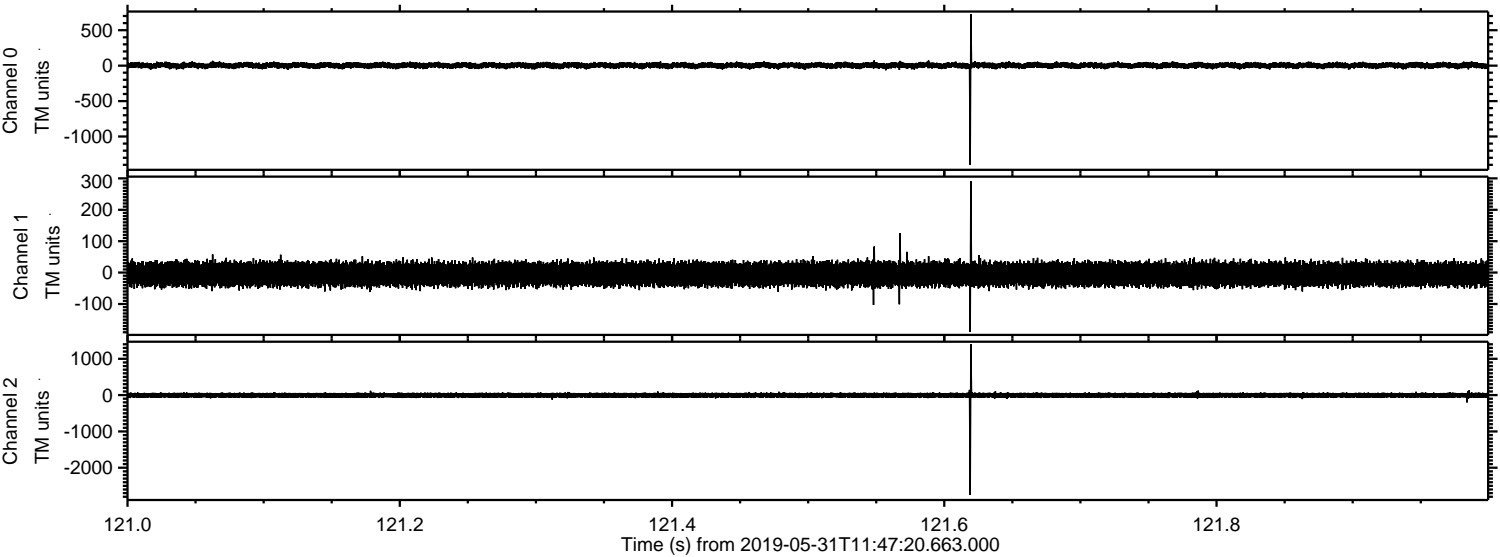
ELMAVAN 3D WAVEFORMS (Measured data sampled at 50 kHz) 51000 packets of 144 samples from 2019-05-31T11:47:20.663.000.

Processed Fri May 31 13:54:54 2019 by ELM ver.2012-10-06 from 001__elm20190531_114719__dat00.bin

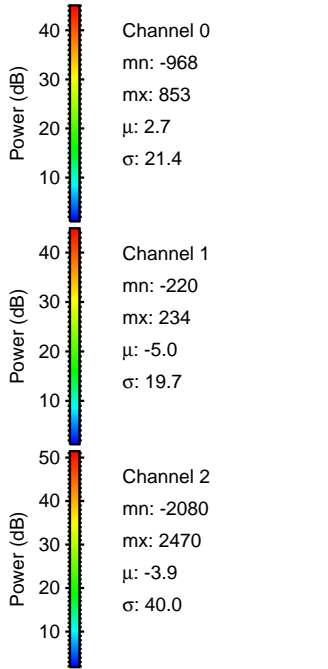
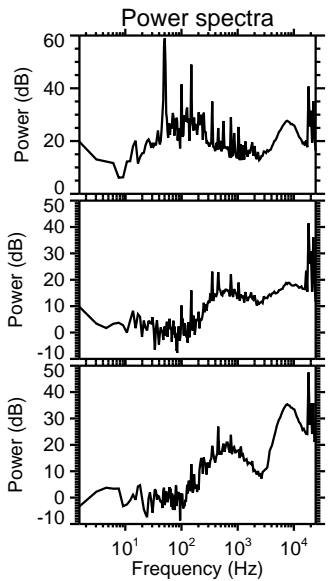
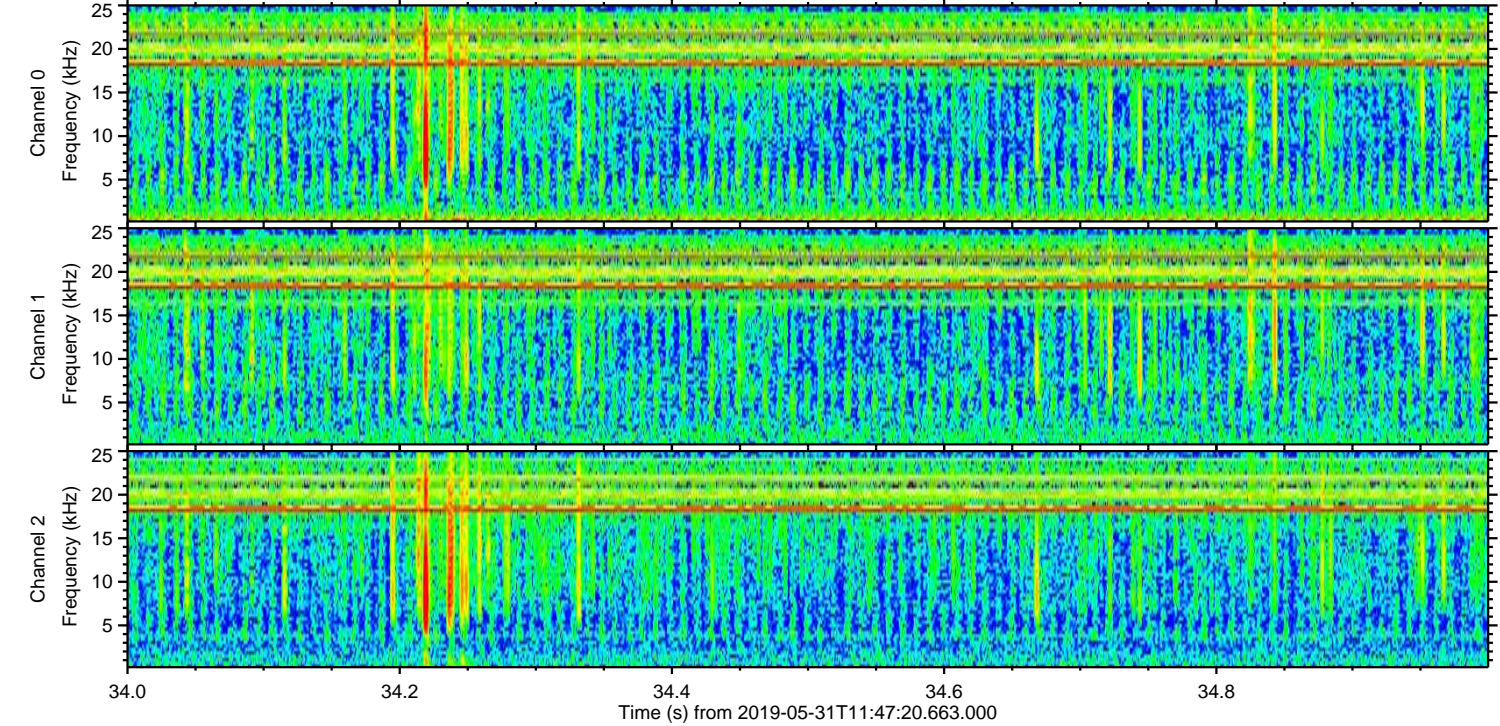
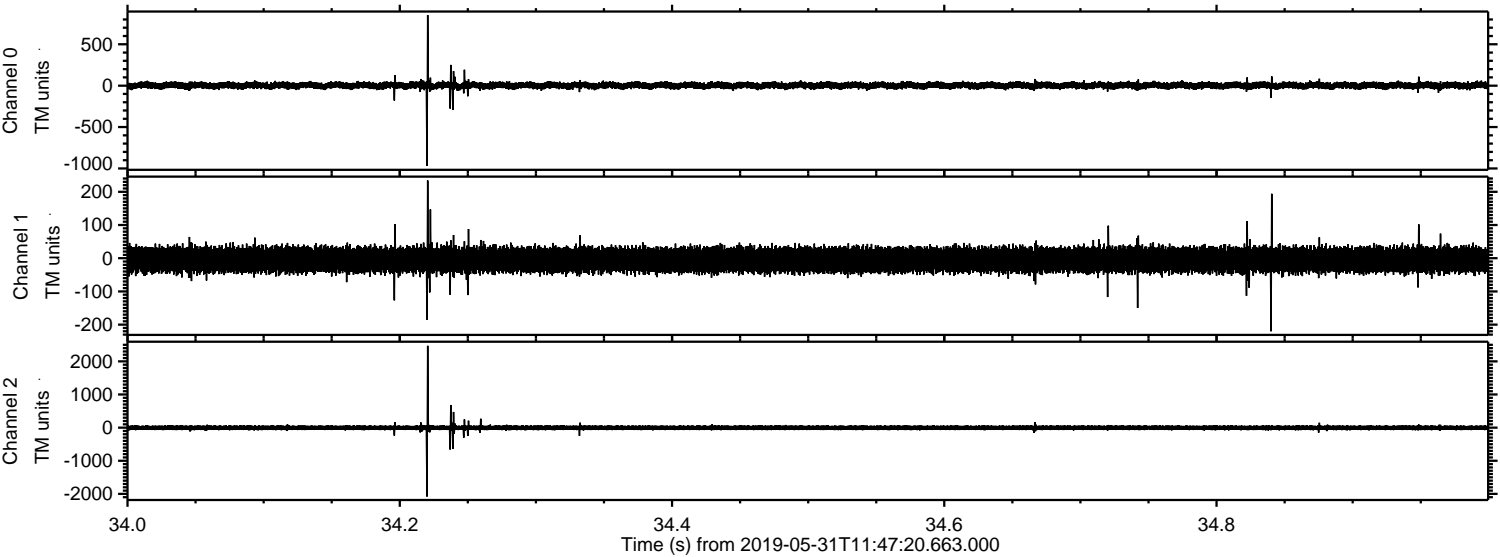


ELMAVAN 3D WAVEFORMS (Measured data sampled at 50 kHz) 51000 packets of 144 samples from 2019-05-31T11:47:20.663.000. Part 122/147

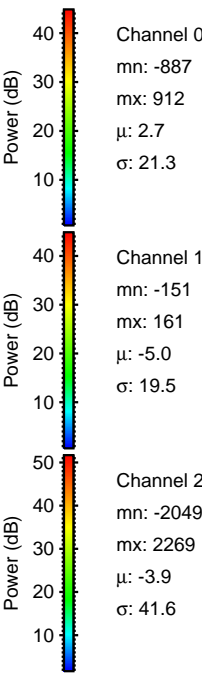
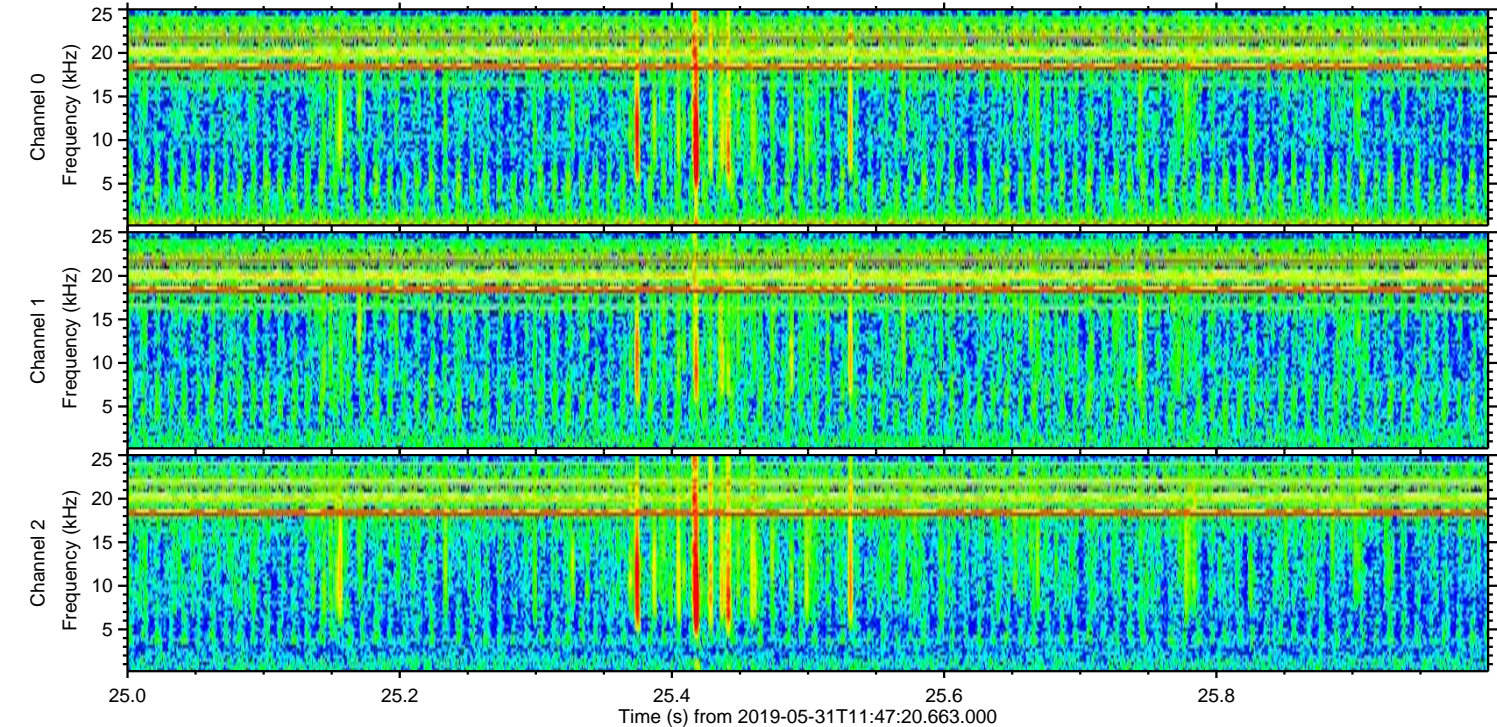
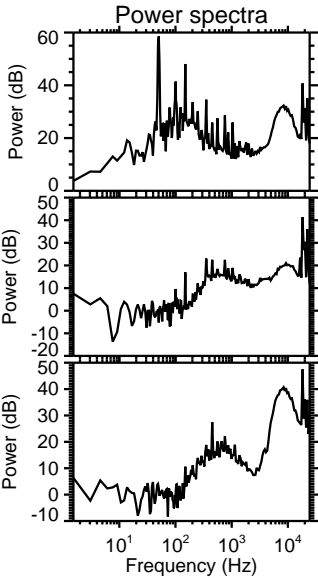
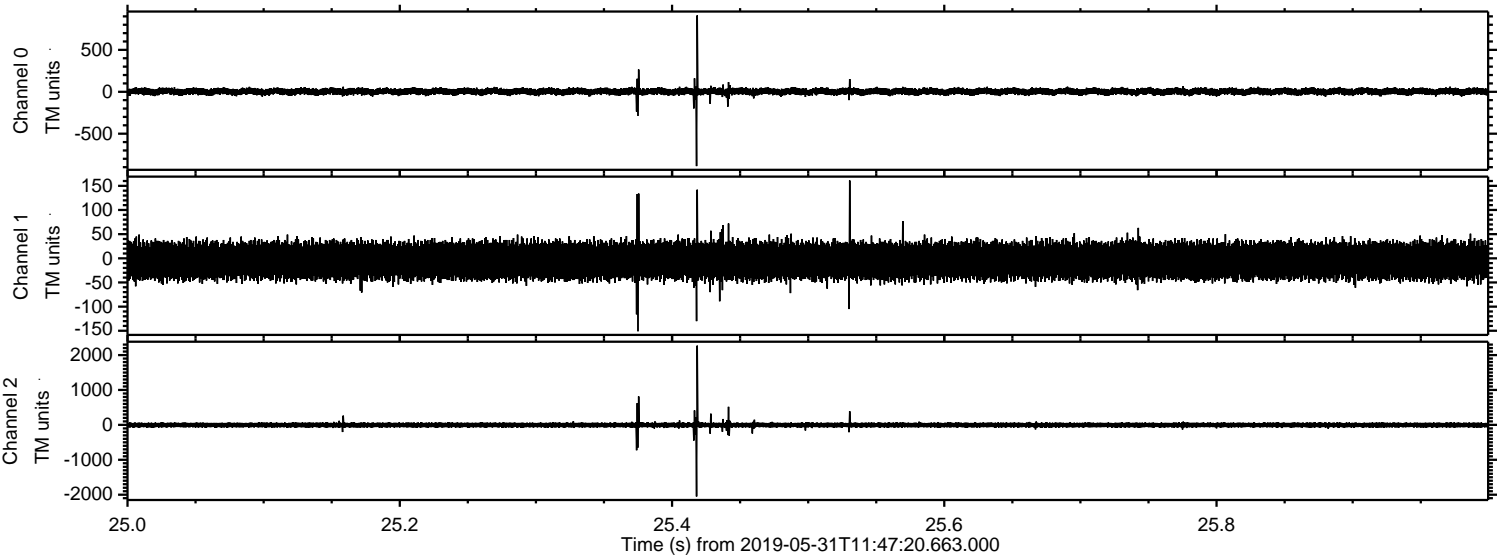
Processed Fri May 31 13:54:59 2019 by ELM ver.2012-10-06 from 001__elm20190531_114719__dat00.bin



Processed Fri May 31 13:55:00 2019 by ELM ver.2012-10-06 from 001__elm20190531_114719__dat00.bin

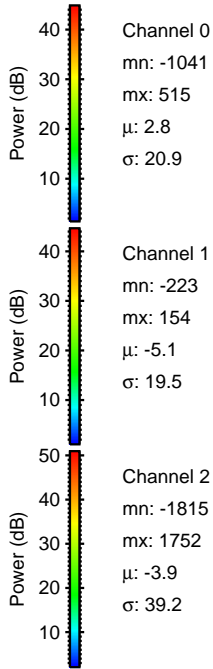
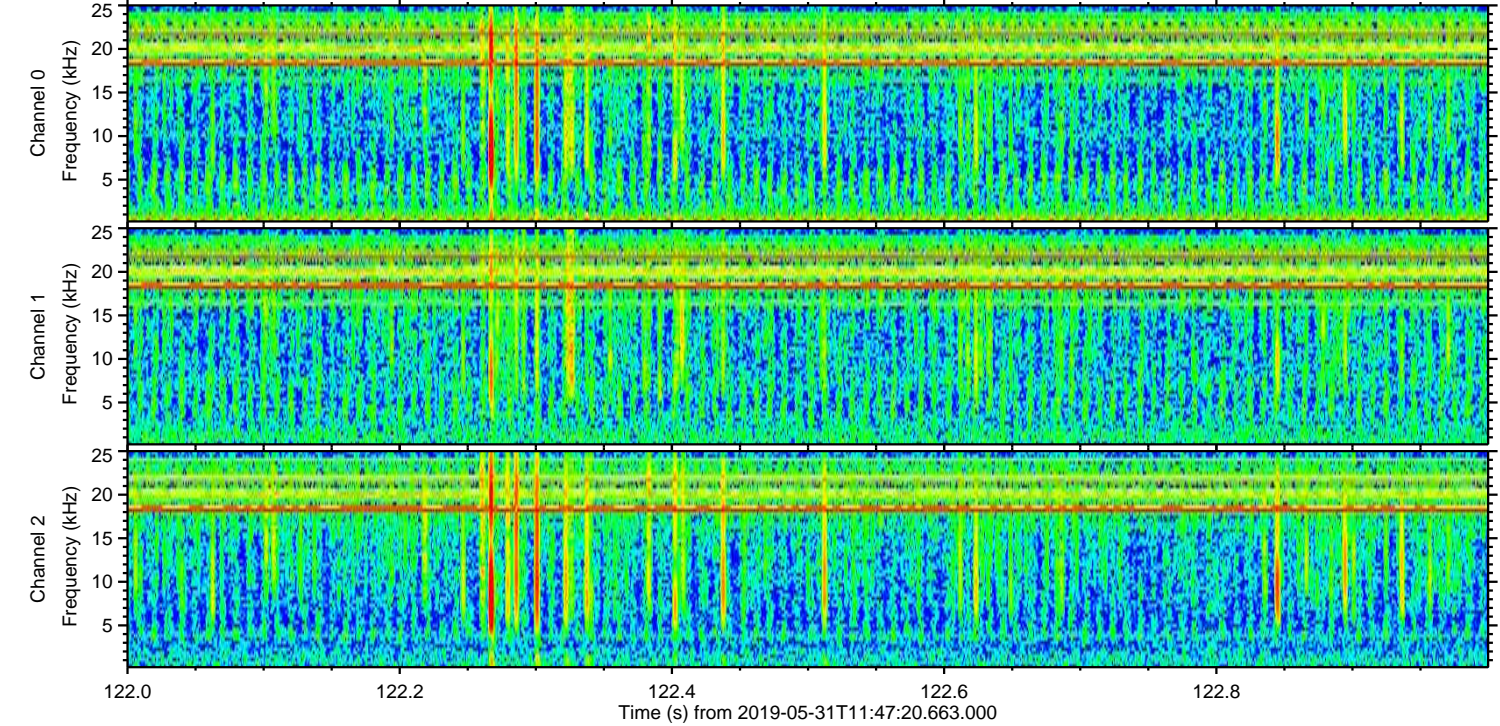
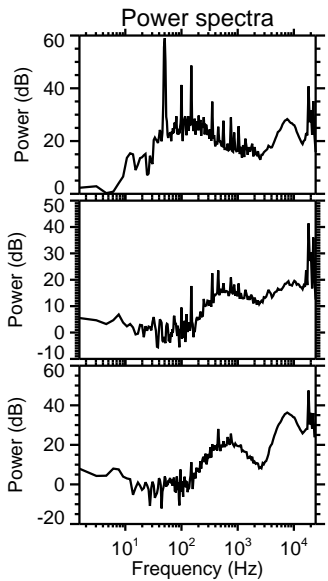
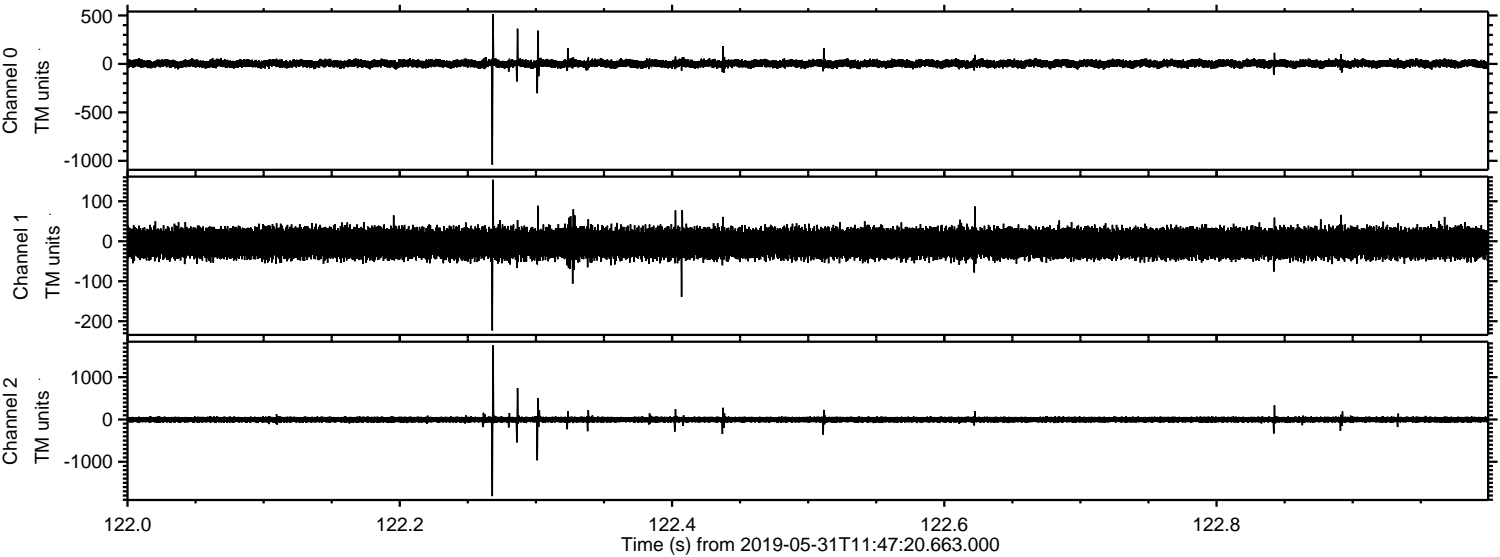


Processed Fri May 31 13:55:01 2019 by ELM ver.2012-10-06 from 001__elm20190531_114719__dat00.bin

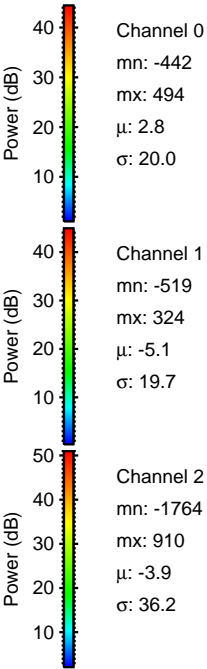
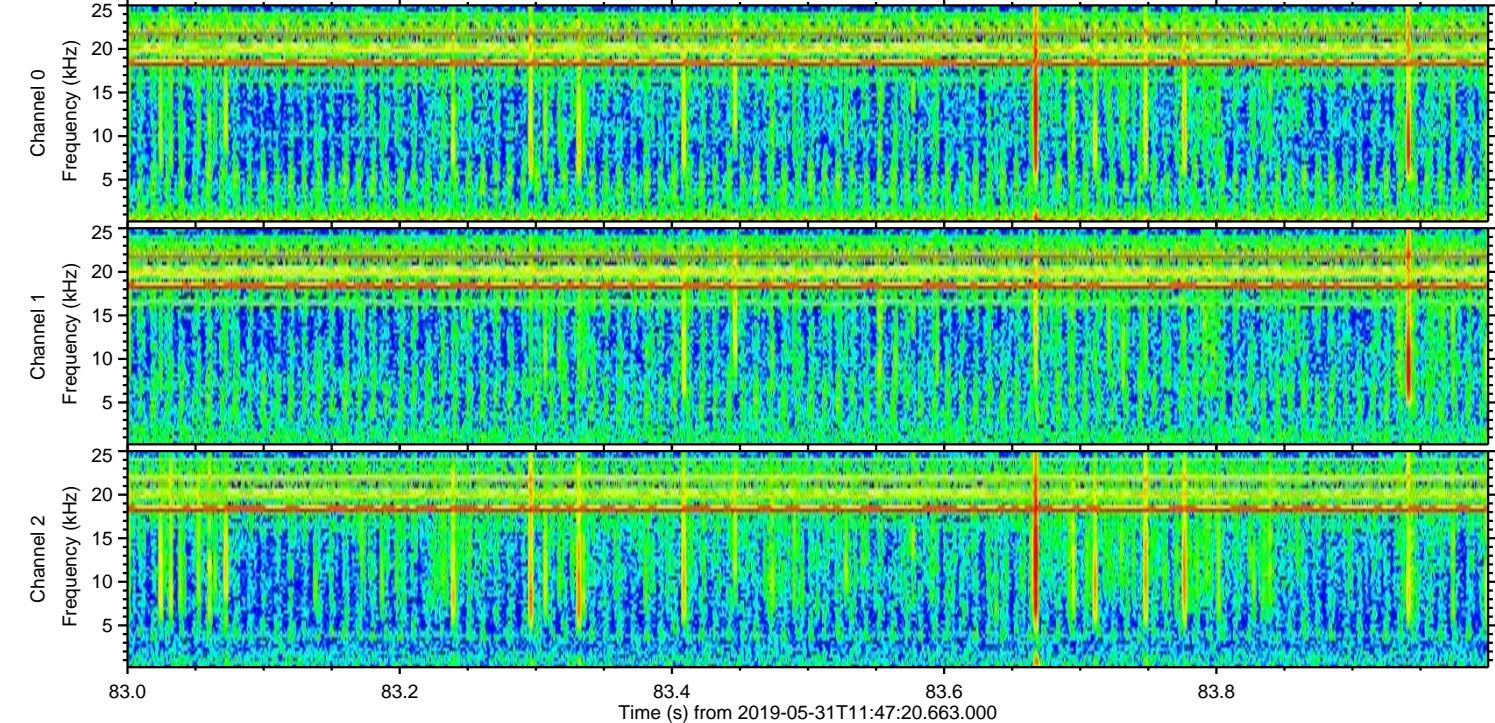
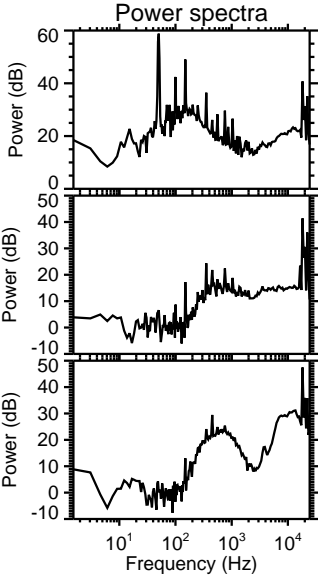
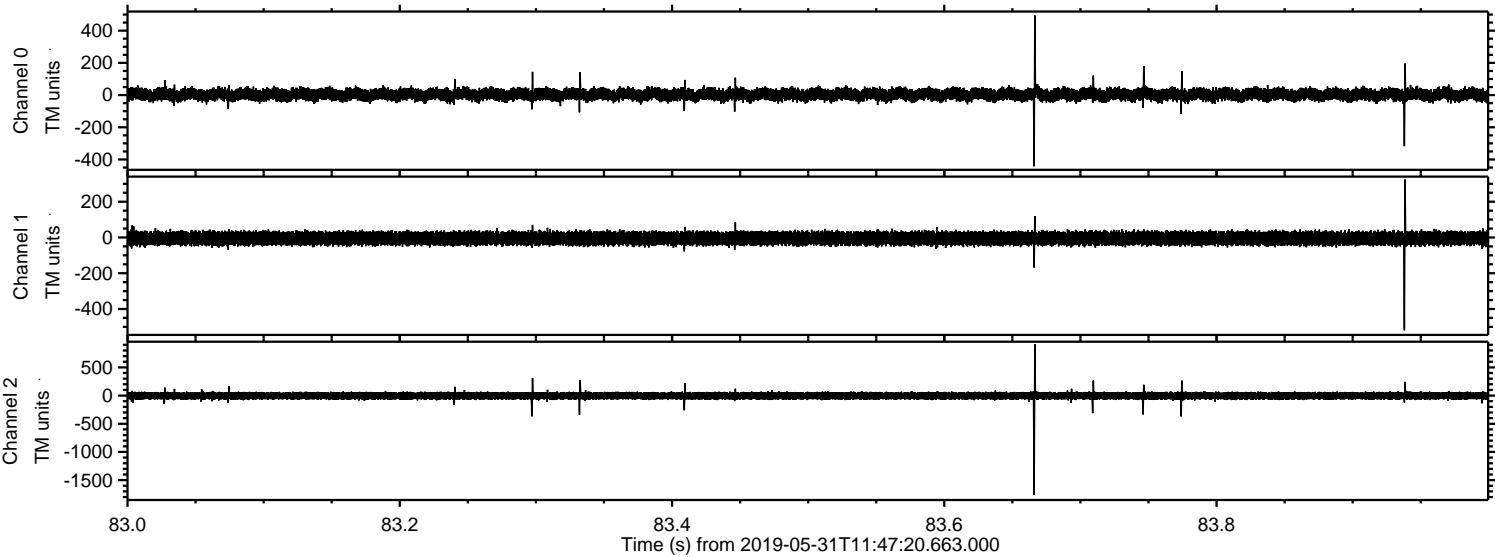


ELMAVAN 3D WAVEFORMS (Measured data sampled at 50 kHz) 51000 packets of 144 samples from 2019-05-31T11:47:20.663.000. Part 123/147

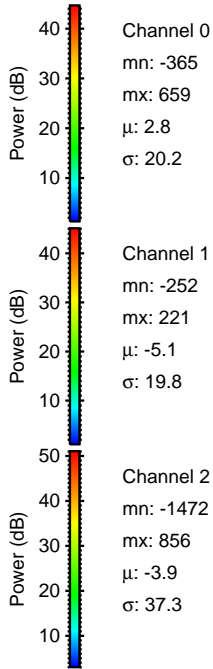
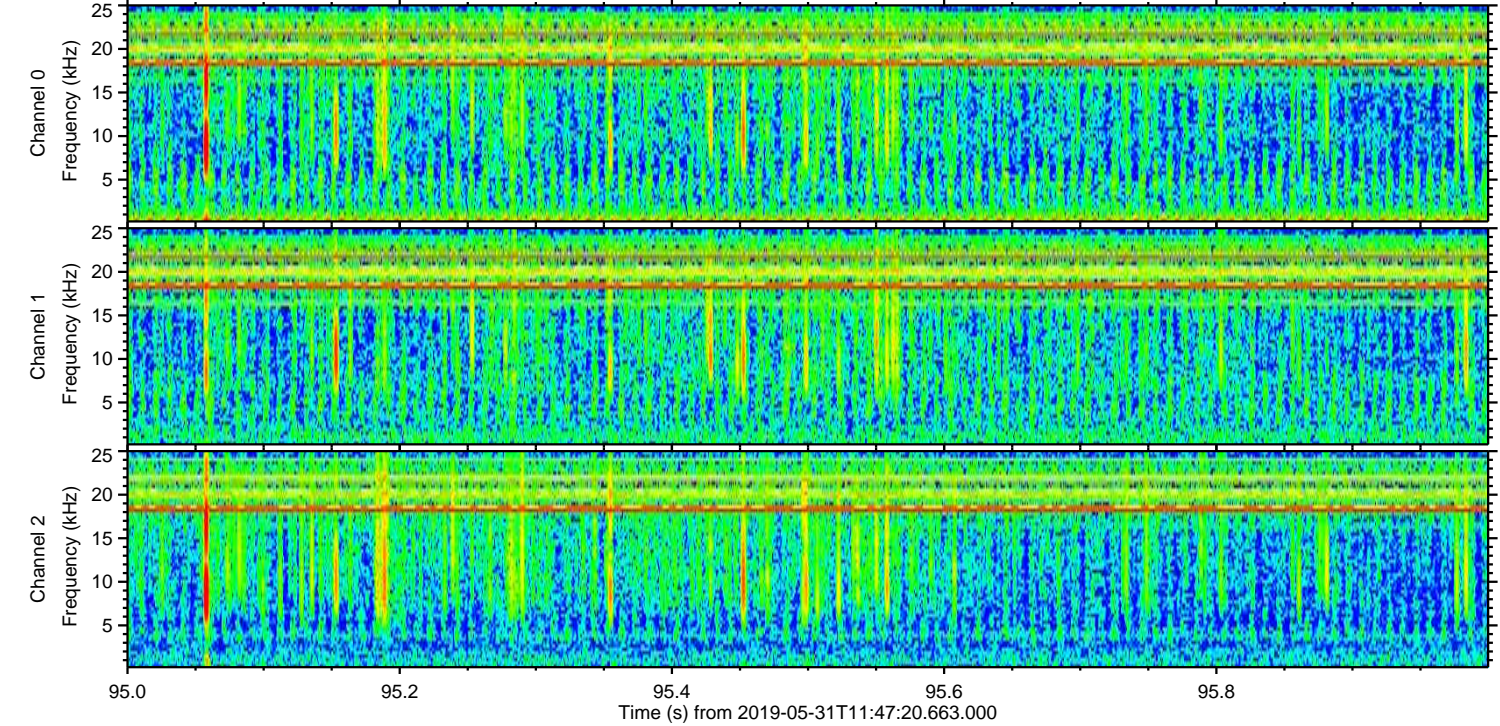
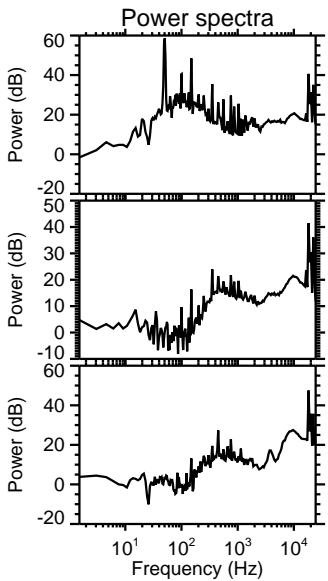
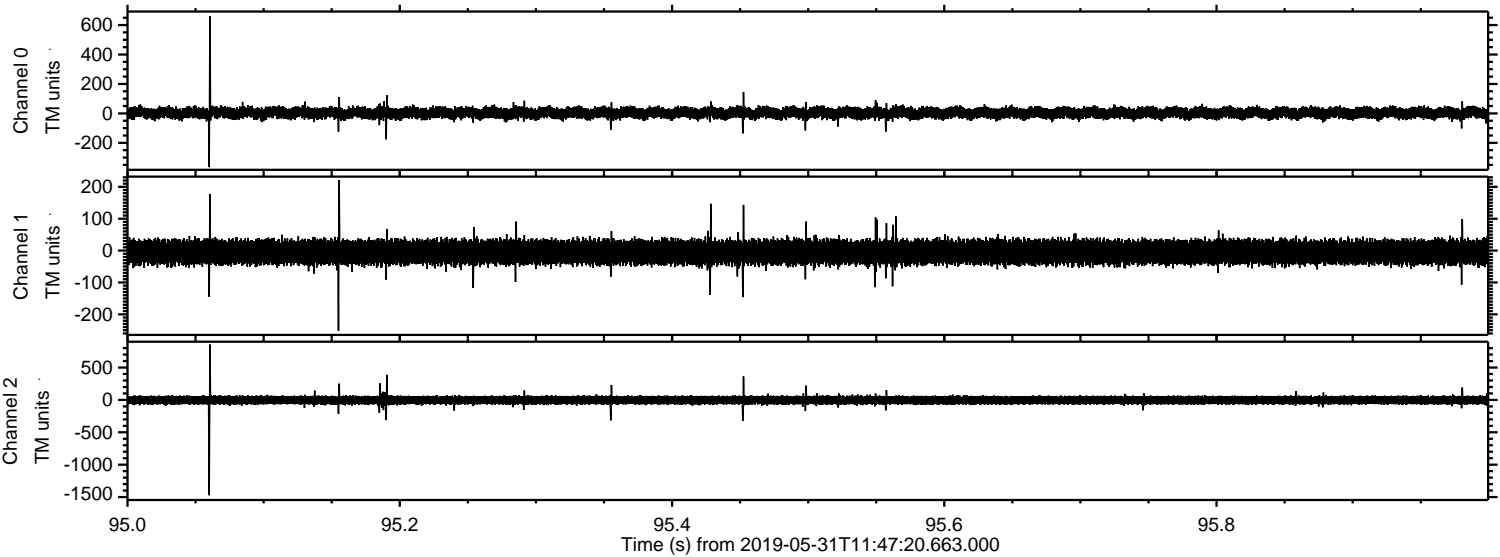
Processed Fri May 31 13:55:01 2019 by ELM ver.2012-10-06 from 001__elm20190531_114719__dat00.bin



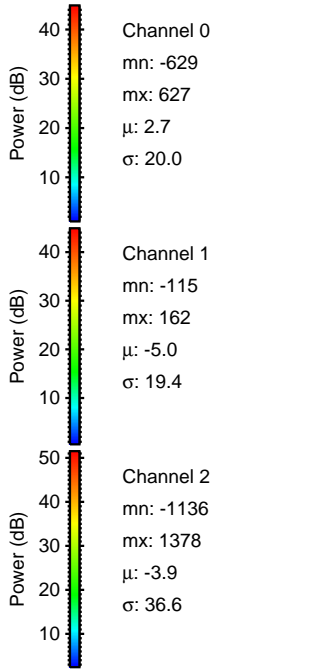
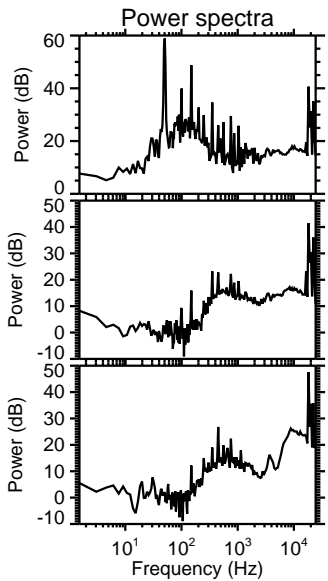
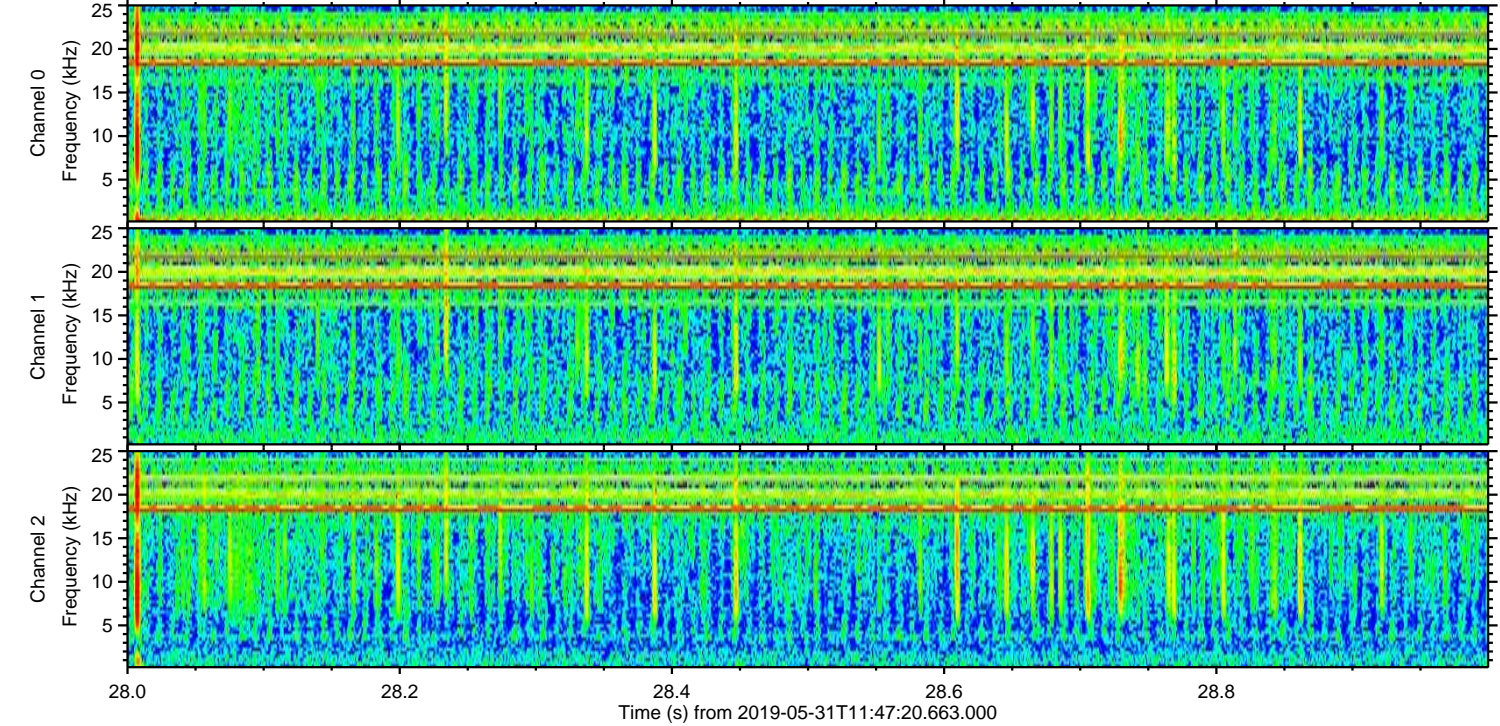
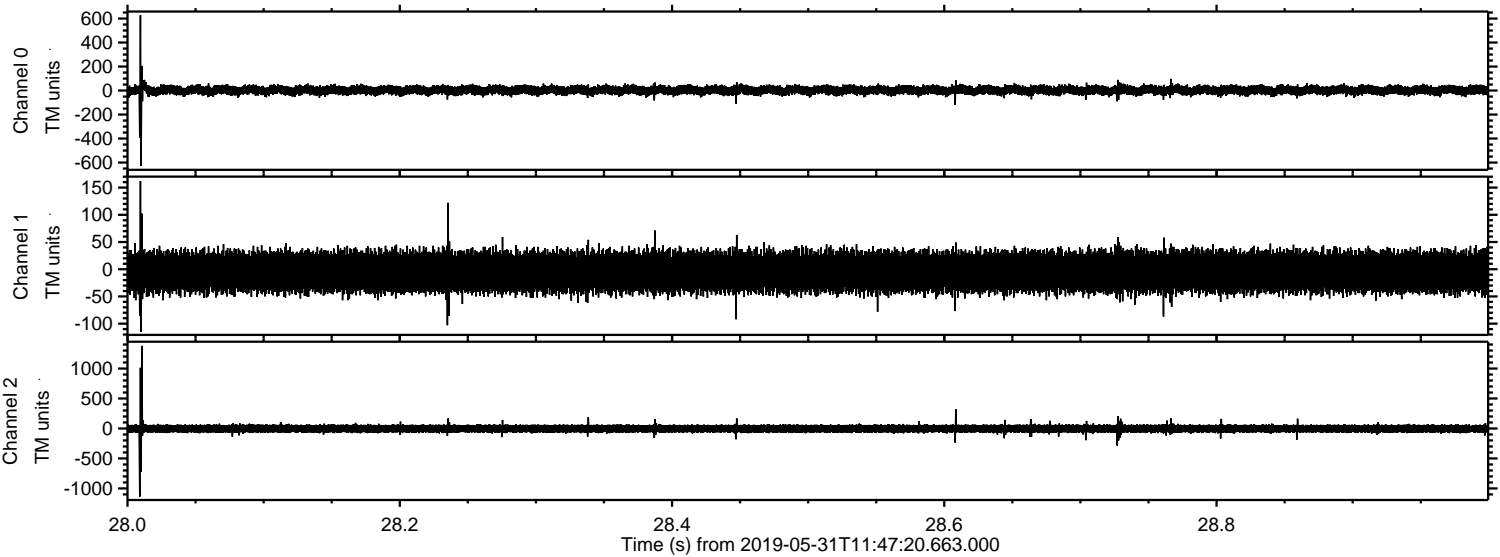
Processed Fri May 31 13:55:02 2019 by ELM ver.2012-10-06 from 001__elm20190531_114719__dat00.bin



Processed Fri May 31 13:55:03 2019 by ELM ver.2012-10-06 from 001__elm20190531_114719__dat00.bin

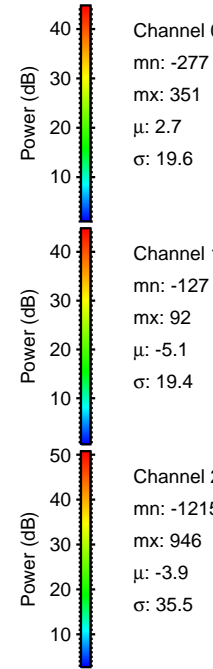
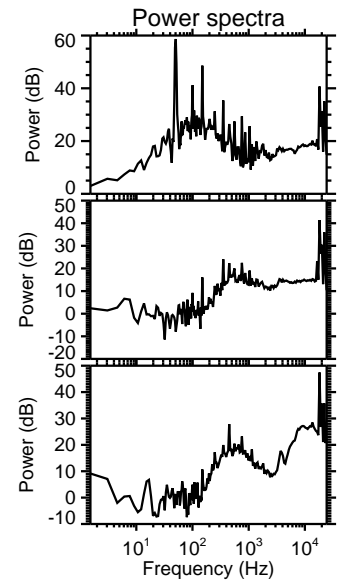
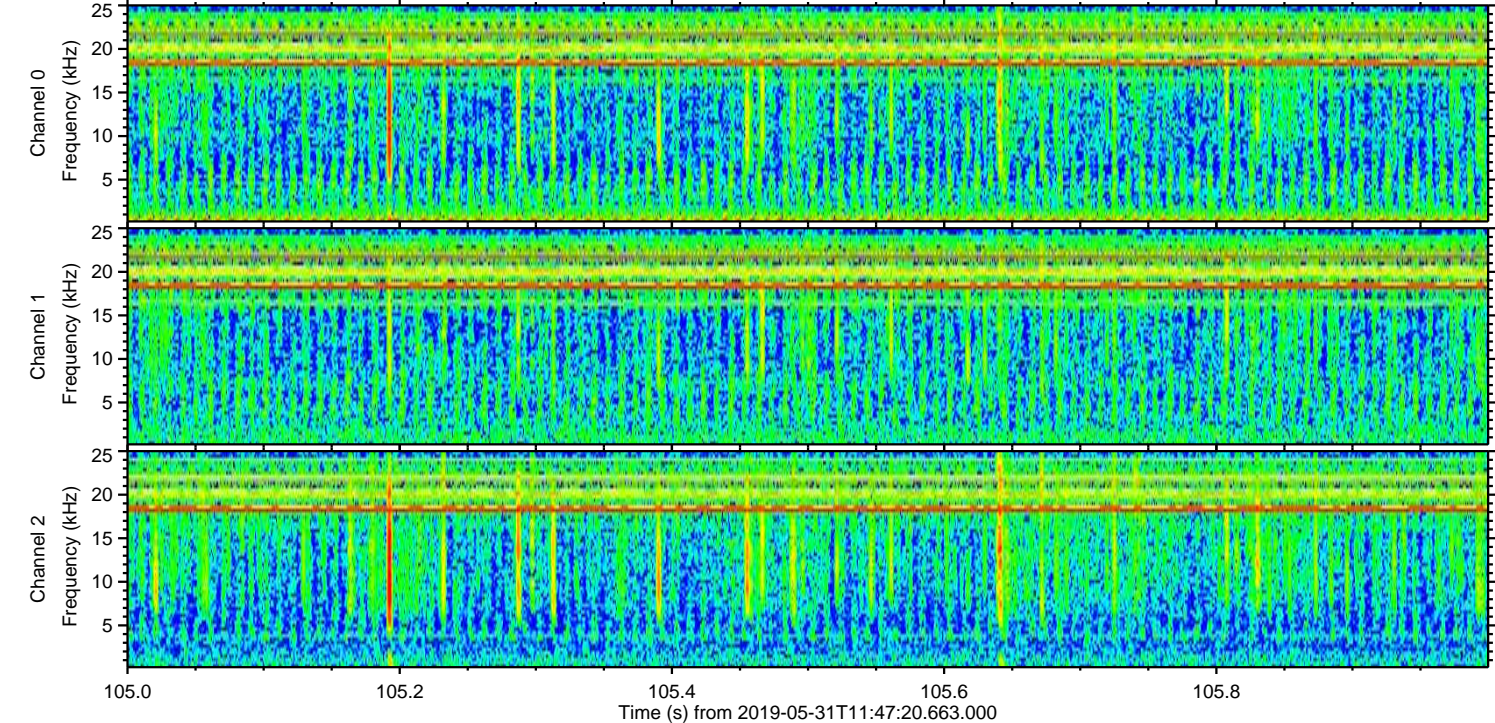
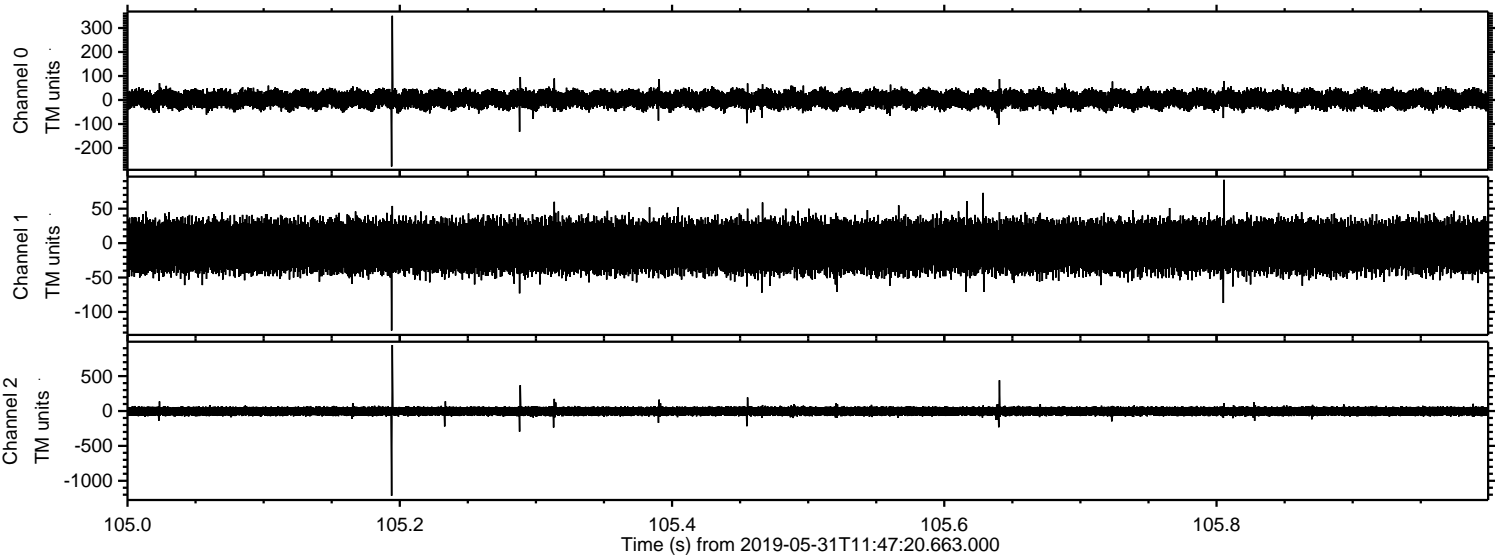


Processed Fri May 31 13:55:03 2019 by ELM ver.2012-10-06 from 001__elm20190531_114719__dat00.bin



ELMAVAN 3D WAVEFORMS (Measured data sampled at 50 kHz) 51000 packets of 144 samples from 2019-05-31T11:47:20.663.000. Part 106/147

Processed Fri May 31 13:55:04 2019 by ELM ver.2012-10-06 from 001__elm20190531_114719__dat00.bin



Channel 0
mn: -277
mx: 351
 μ : 2.7
 σ : 19.6

Channel 1
mn: -127
mx: 92
 μ : -5.1
 σ : 19.4

Channel 2
mn: -1215
mx: 946
 μ : -3.9
 σ : 35.5

Processed Fri May 31 13:55:04 2019 by ELM ver.2012-10-06 from 001__elm20190531_114719__dat00.bin

