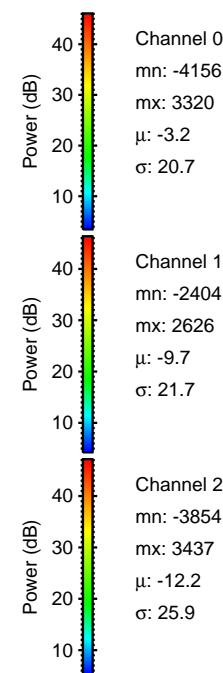
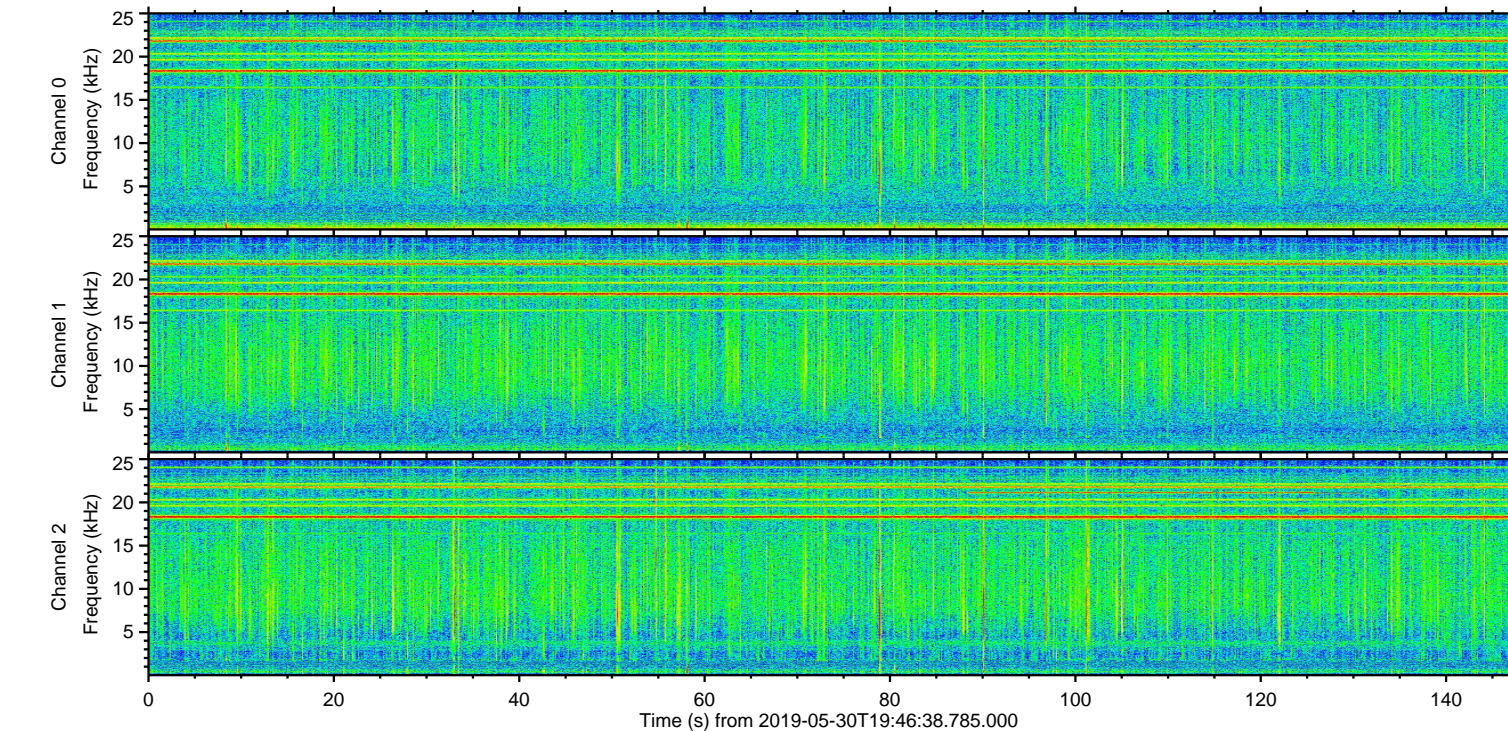
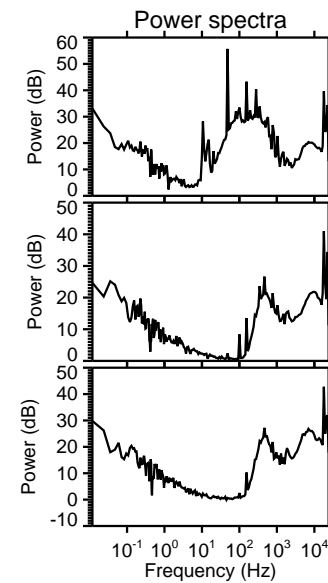
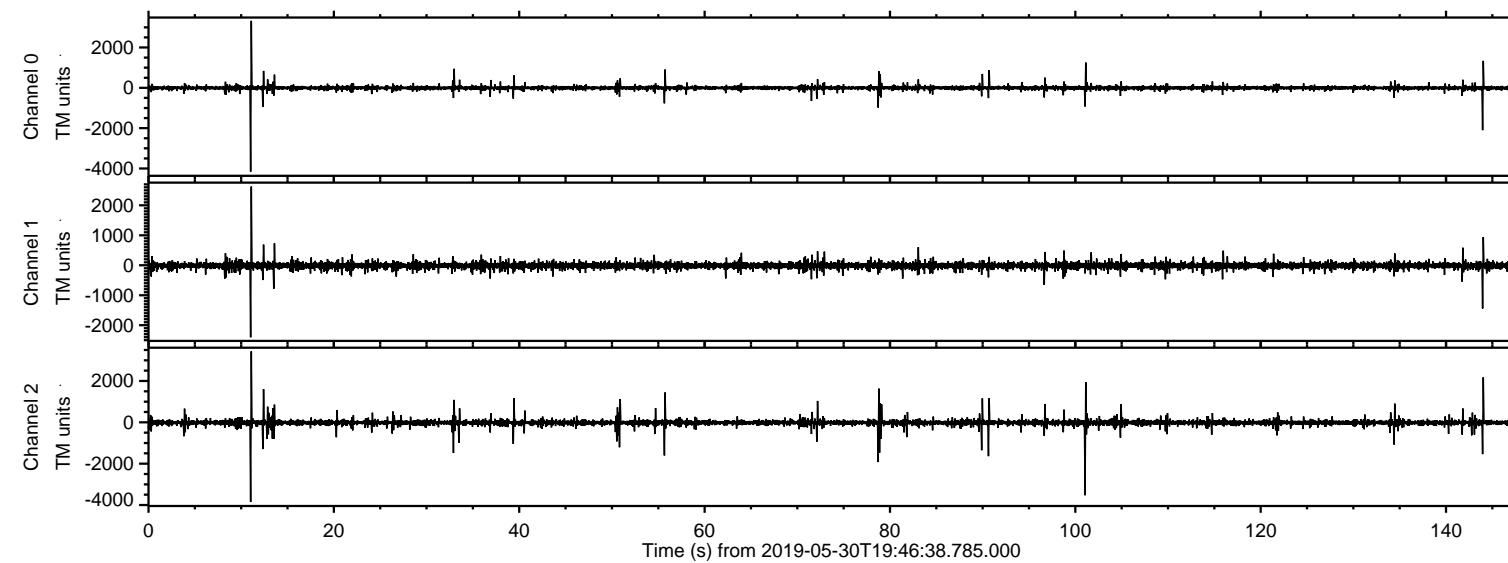
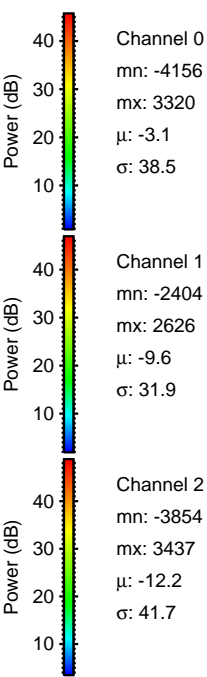
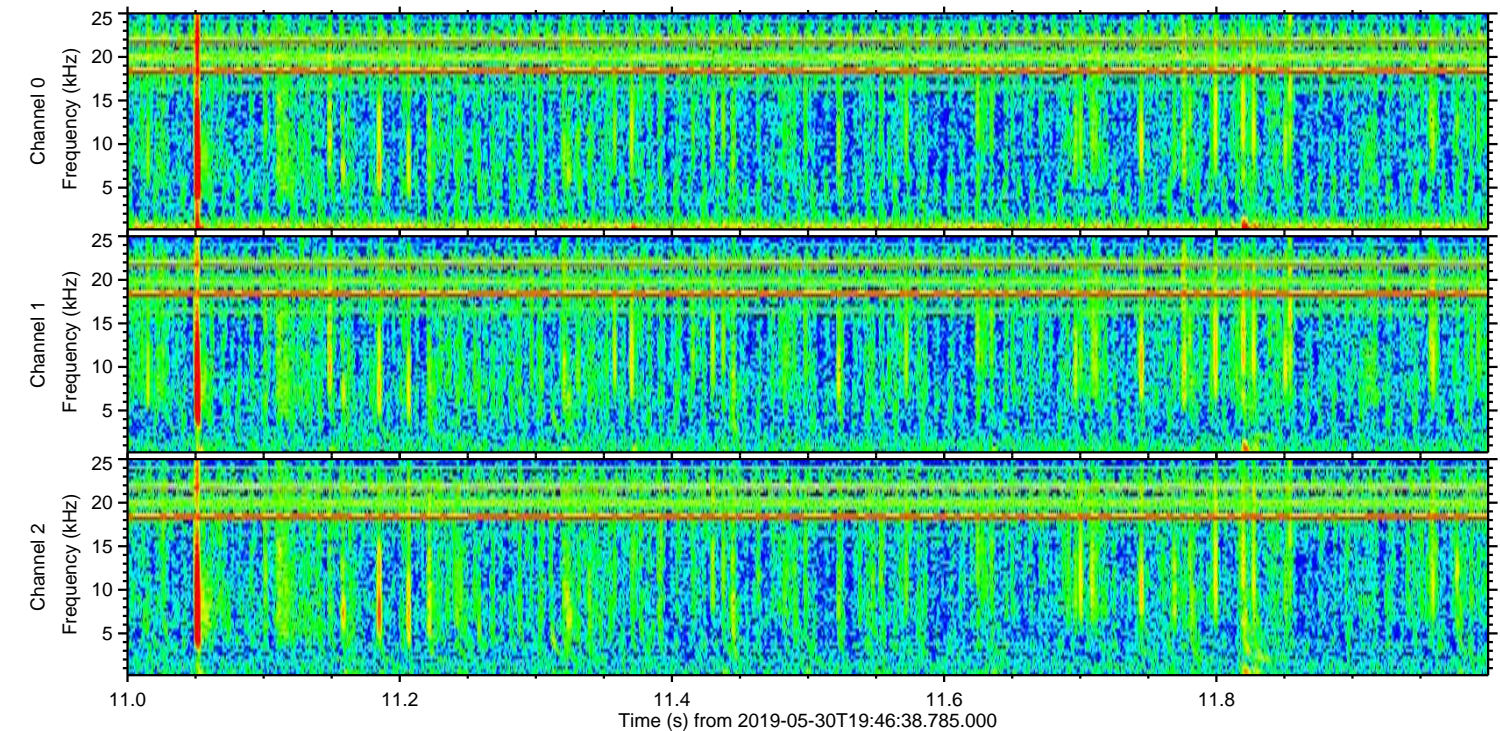
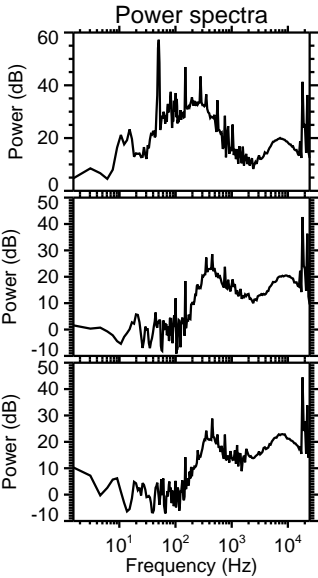
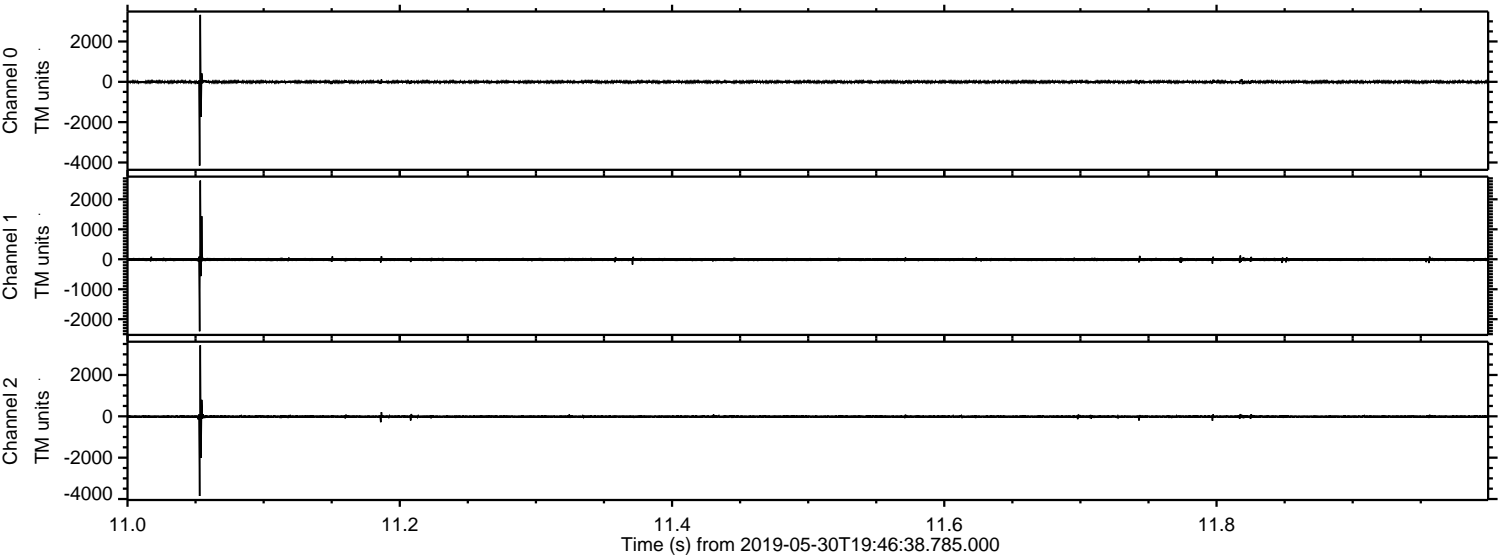


ELMAVAN 3D WAVEFORMS (Measured data sampled at 50 kHz) 51000 packets of 144 samples from 2019-05-30T19:46:38.785.000.

Processed Thu May 30 21:53:59 2019 by ELM ver.2012-10-06 from 001__elm20190530_194637__dat00.bin

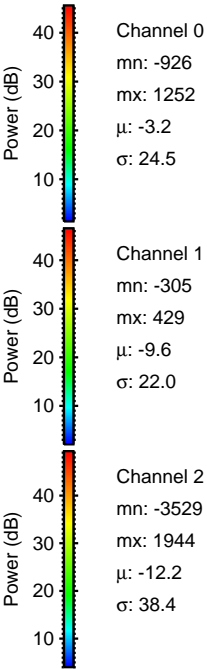
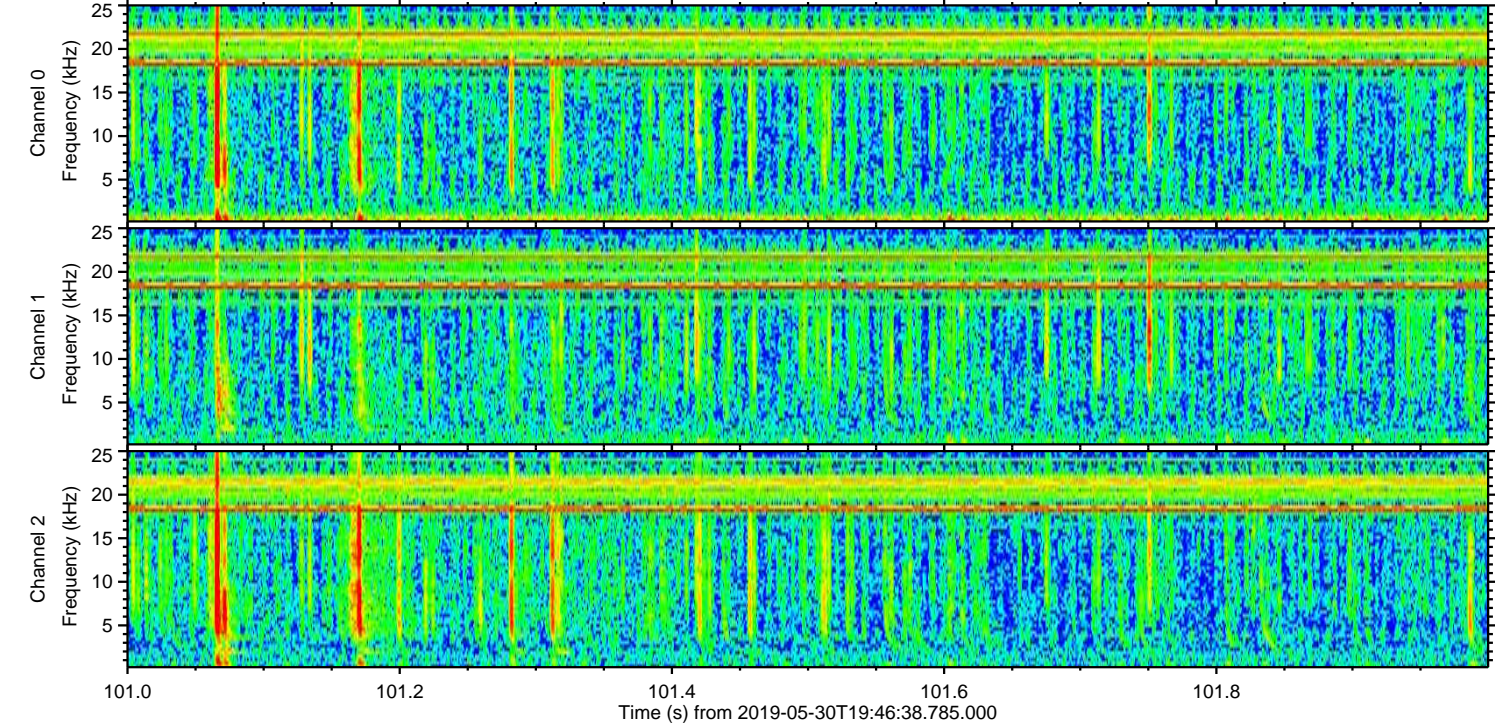
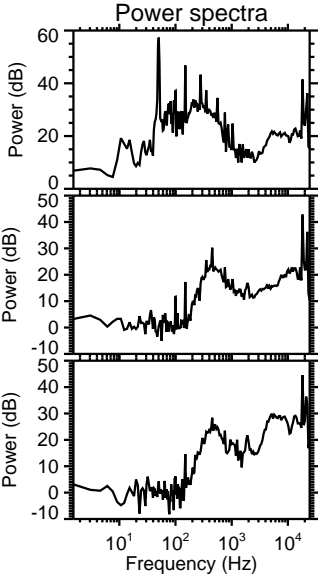
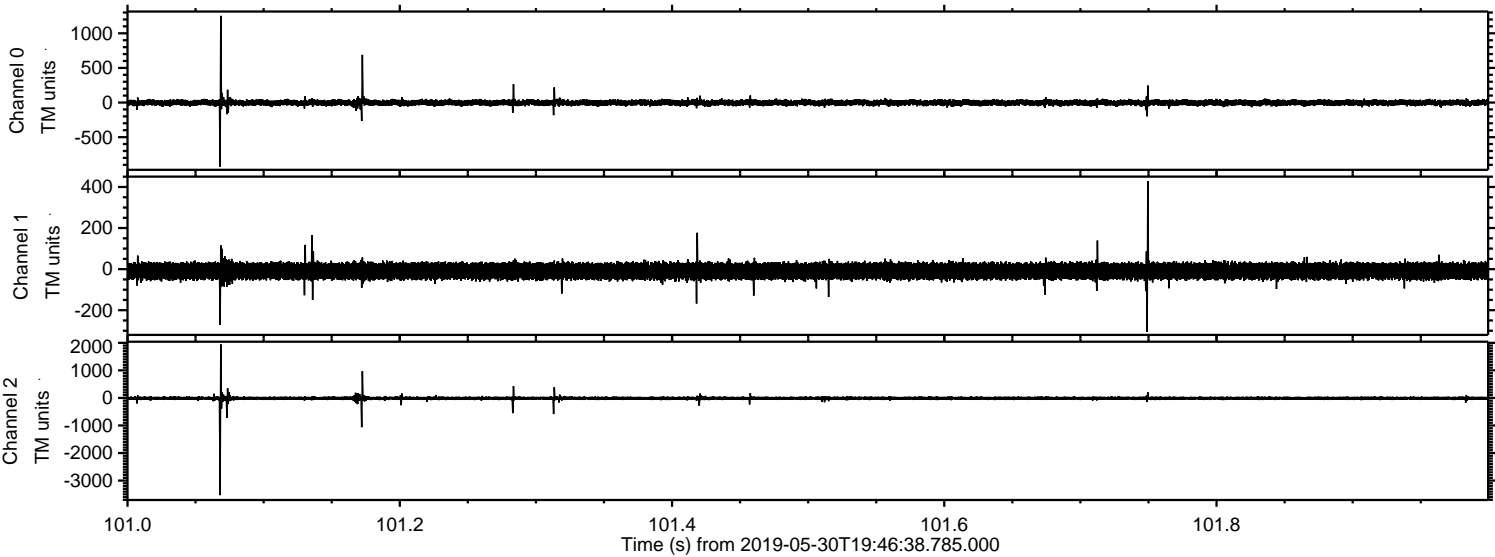


Processed Thu May 30 21:54:05 2019 by ELM ver.2012-10-06 from 001__elm20190530_194637__dat00.bin



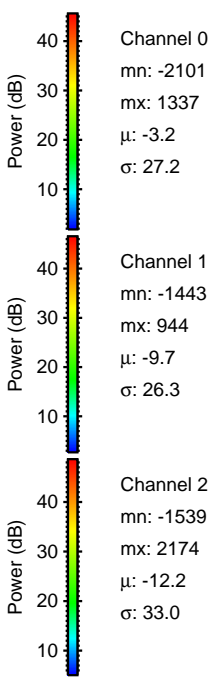
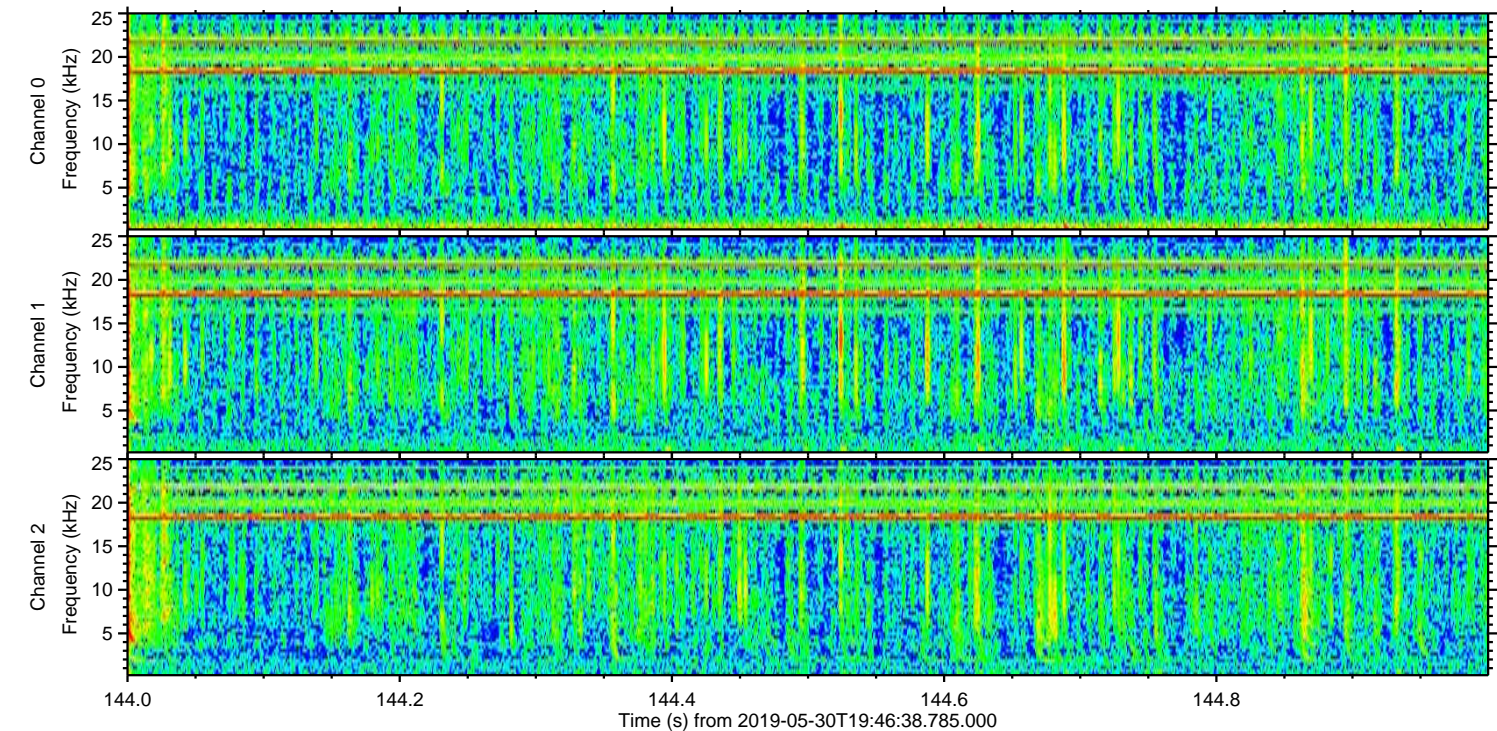
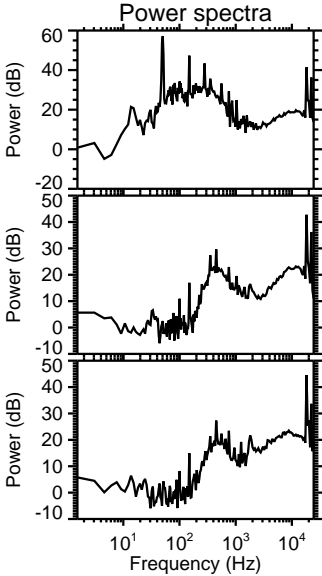
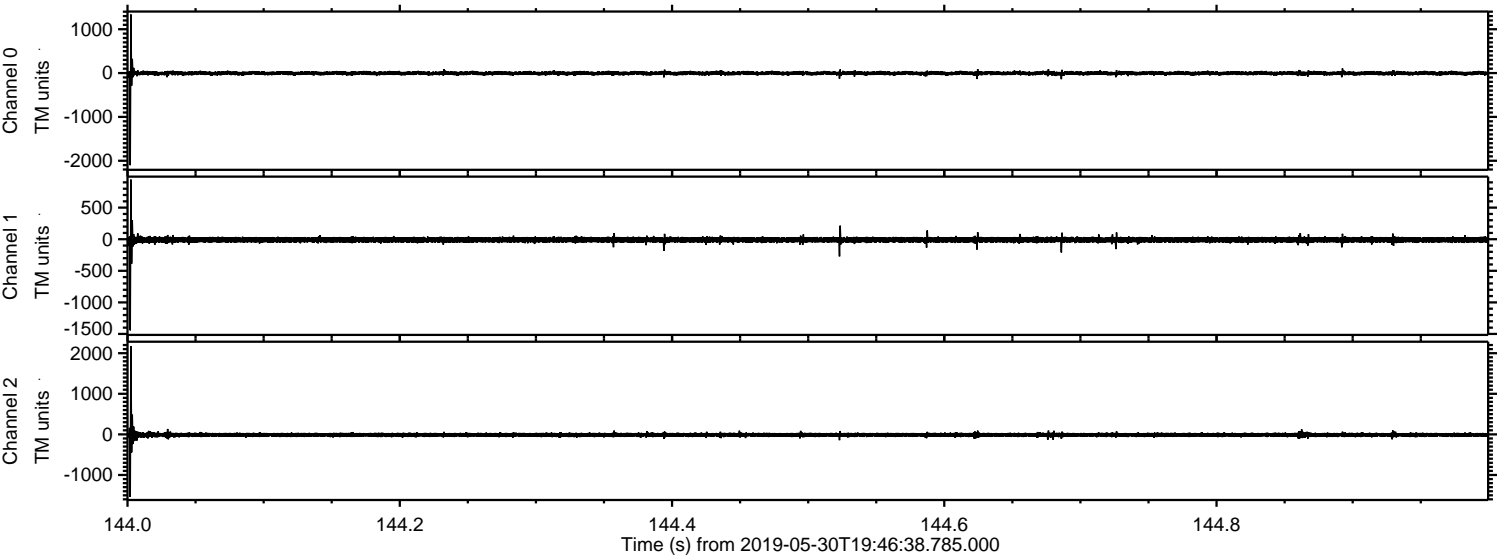
ELMAVAN 3D WAVEFORMS (Measured data sampled at 50 kHz) 51000 packets of 144 samples from 2019-05-30T19:46:38.785.000. Part 102/147

Processed Thu May 30 21:54:06 2019 by ELM ver.2012-10-06 from 001__elm20190530_194637__dat00.bin



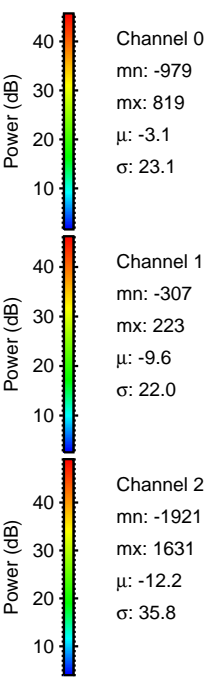
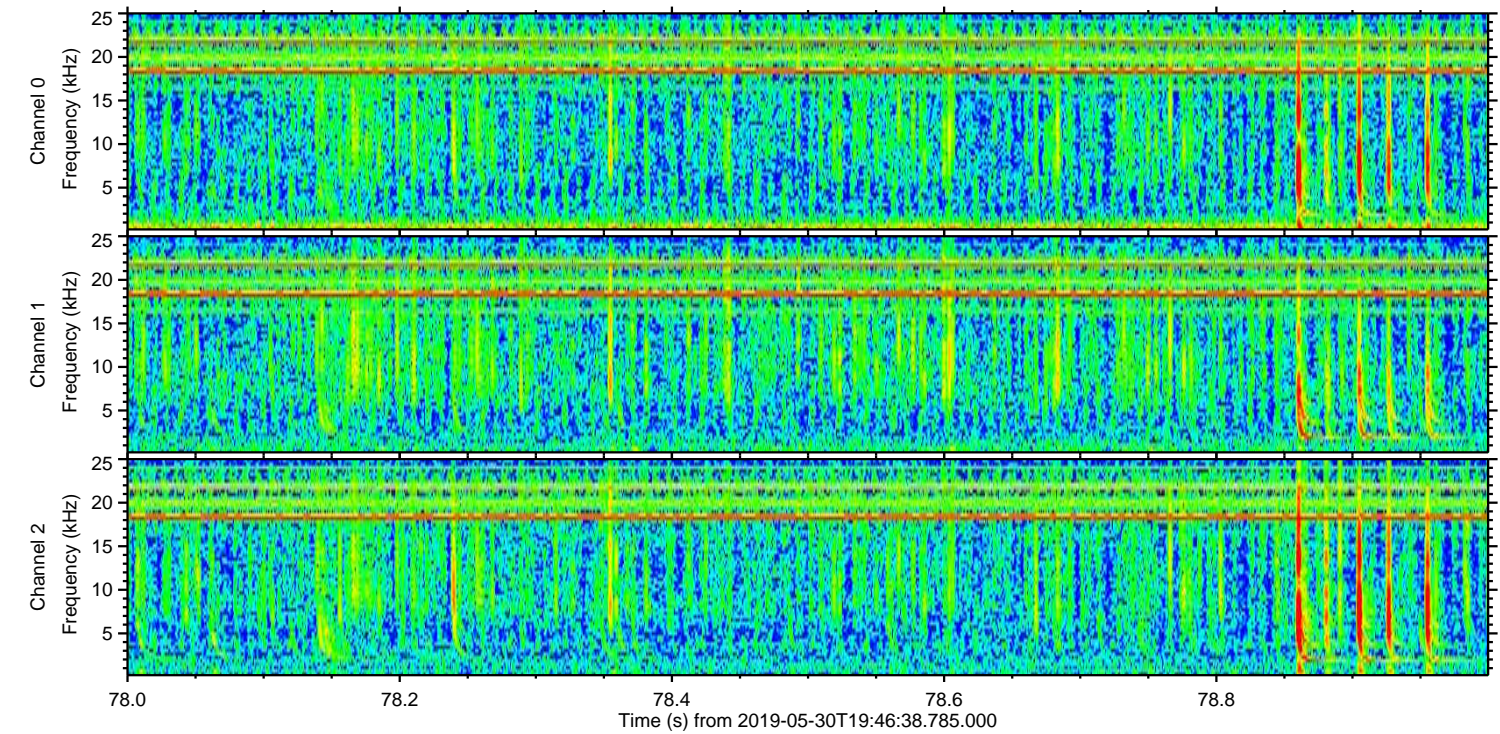
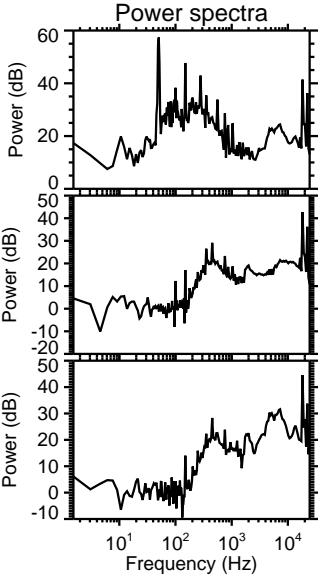
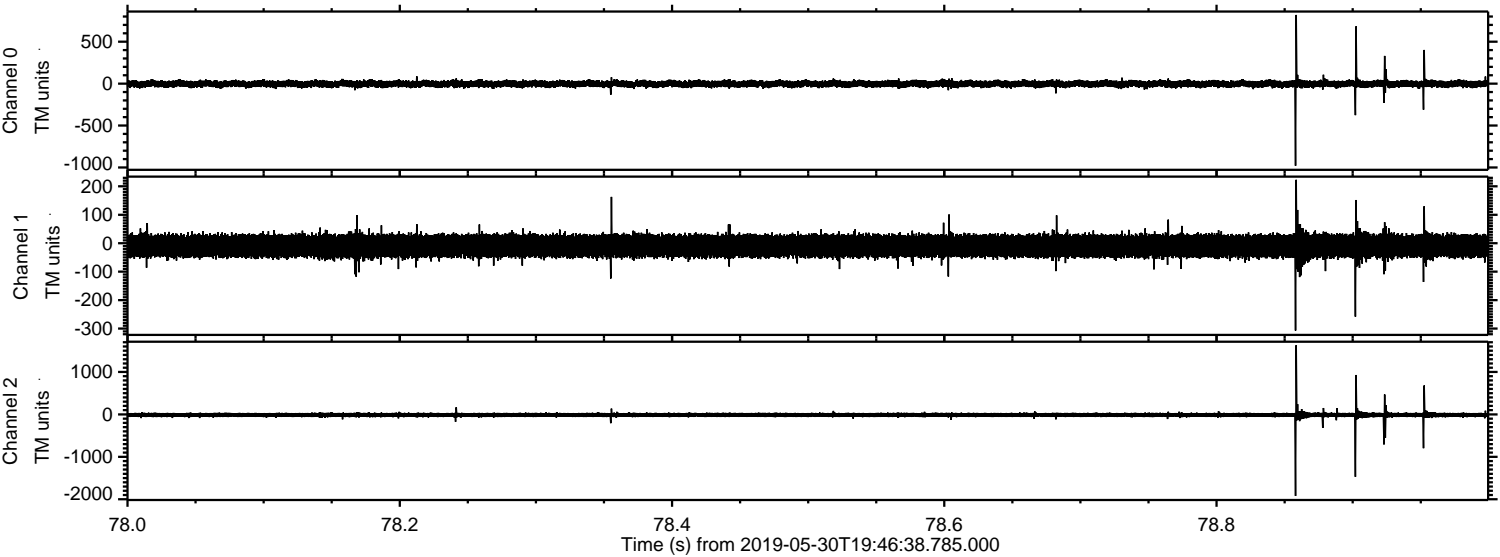
ELMAVAN 3D WAVEFORMS (Measured data sampled at 50 kHz) 51000 packets of 144 samples from 2019-05-30T19:46:38.785.000. Part 145/147

Processed Thu May 30 21:54:06 2019 by ELM ver.2012-10-06 from 001__elm20190530_194637__dat00.bin

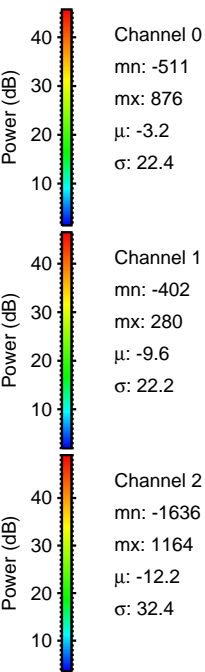
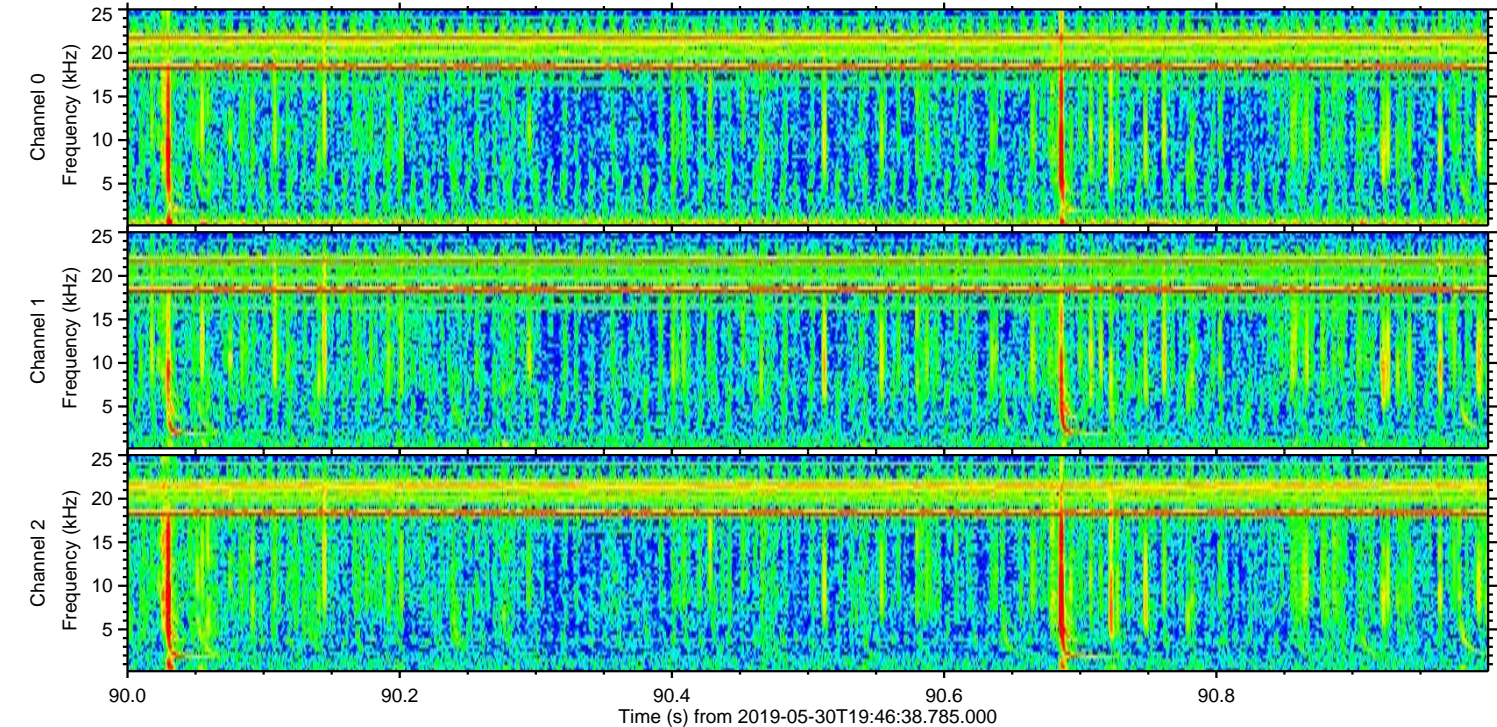
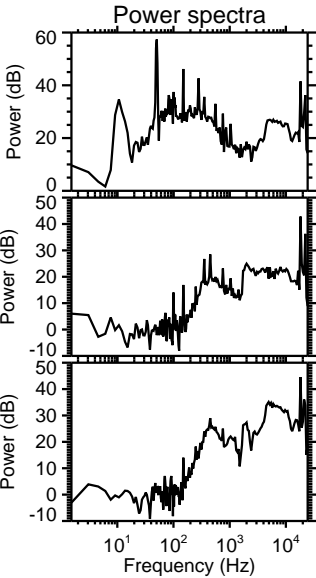
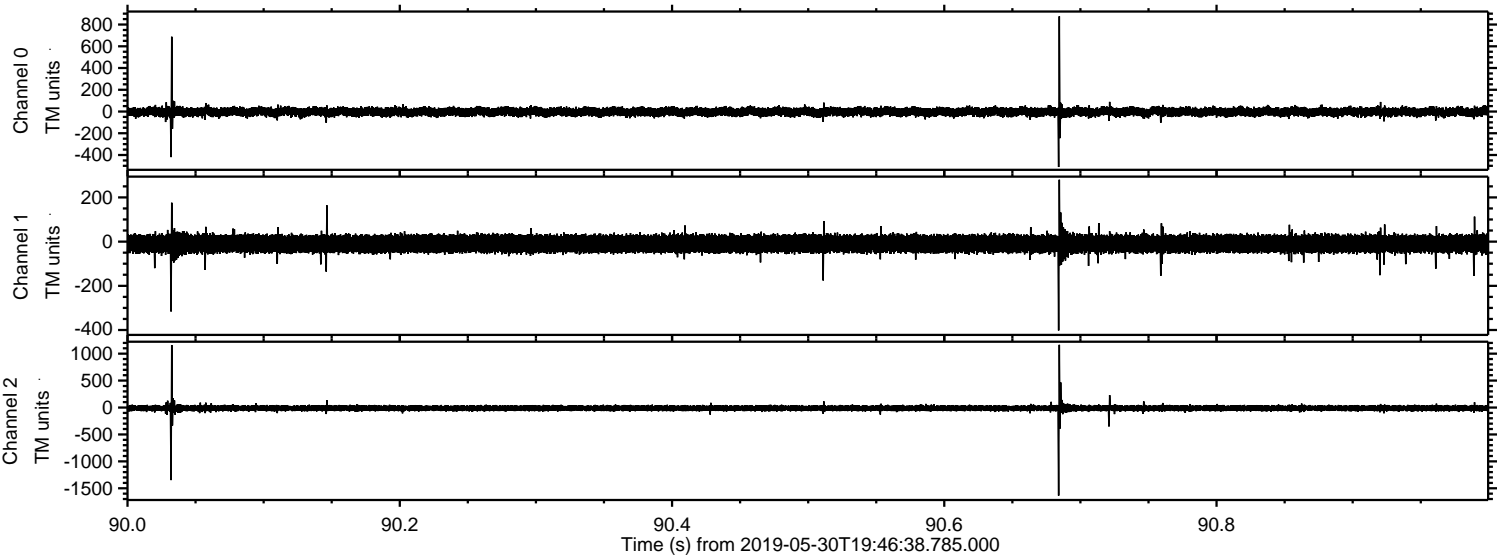


ELMAVAN 3D WAVEFORMS (Measured data sampled at 50 kHz) 51000 packets of 144 samples from 2019-05-30T19:46:38.785.000. Part 79/147

Processed Thu May 30 21:54:07 2019 by ELM ver.2012-10-06 from 001__elm20190530_194637__dat00.bin

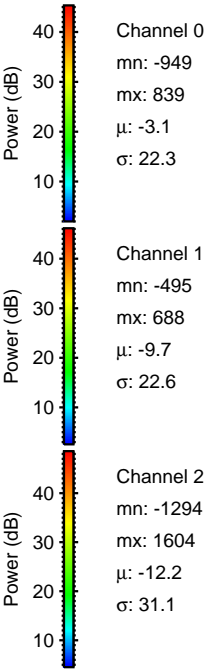
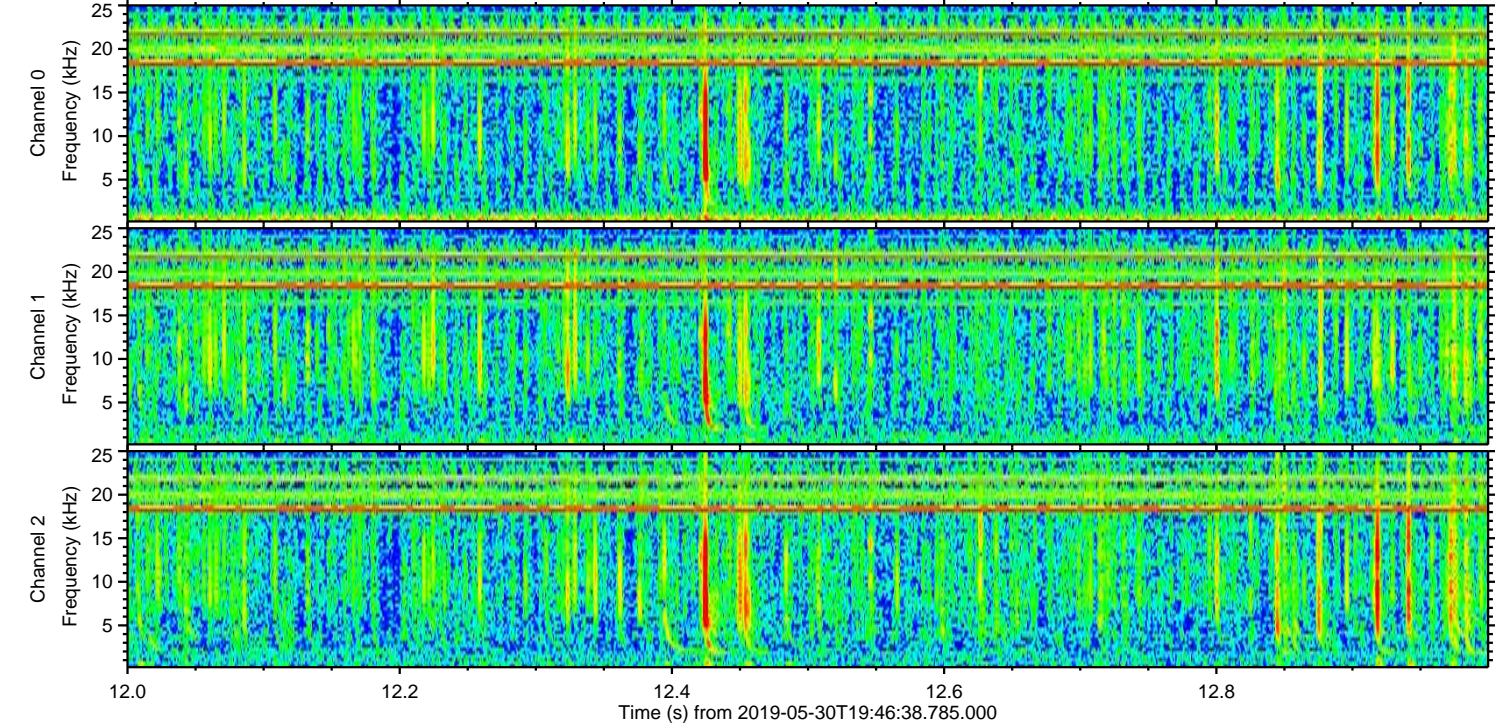
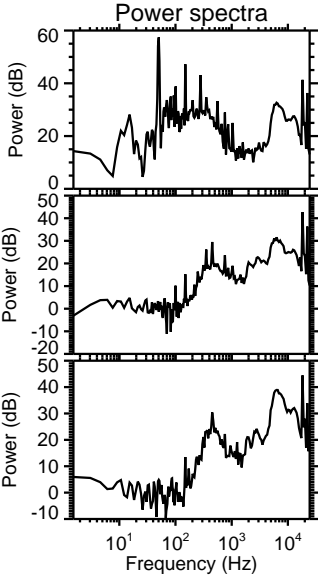
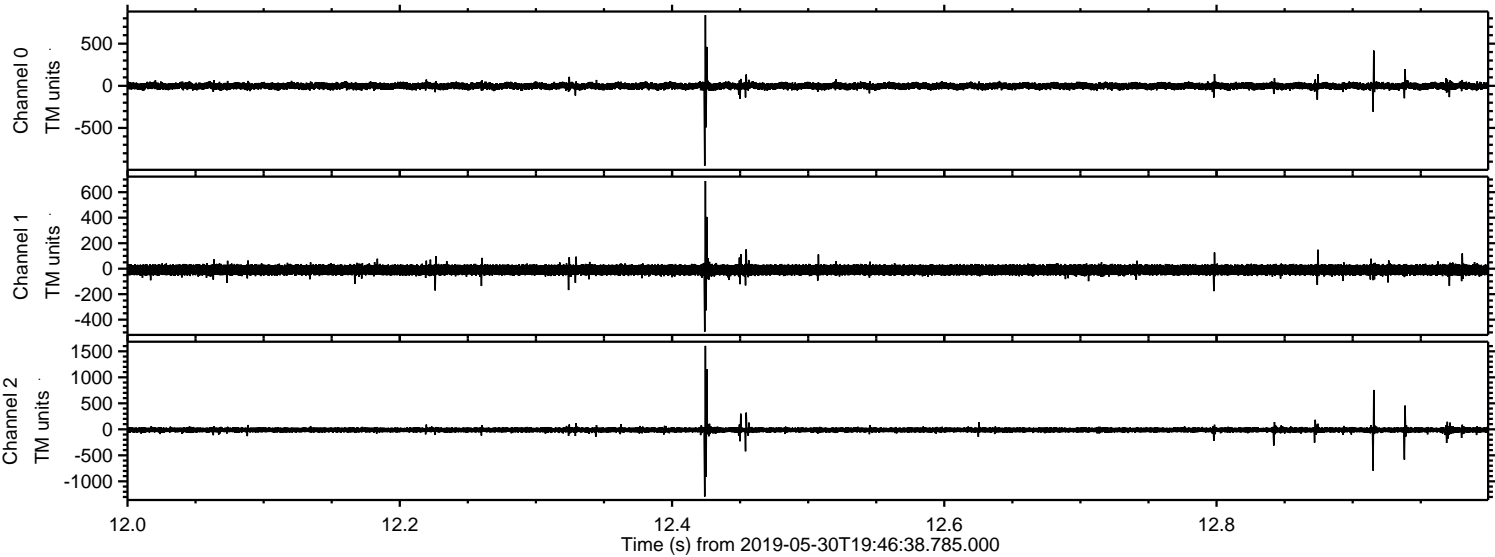


Processed Thu May 30 21:54:08 2019 by ELM ver.2012-10-06 from 001__elm20190530_194637__dat00.bin

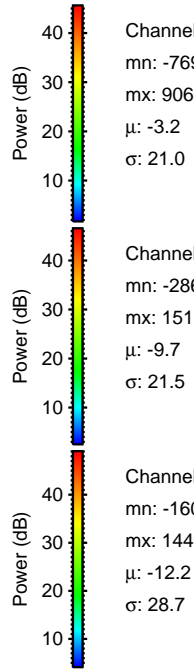
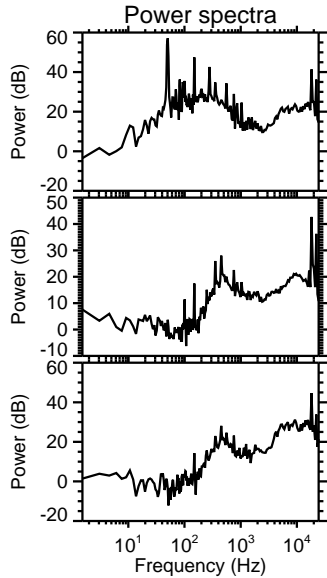
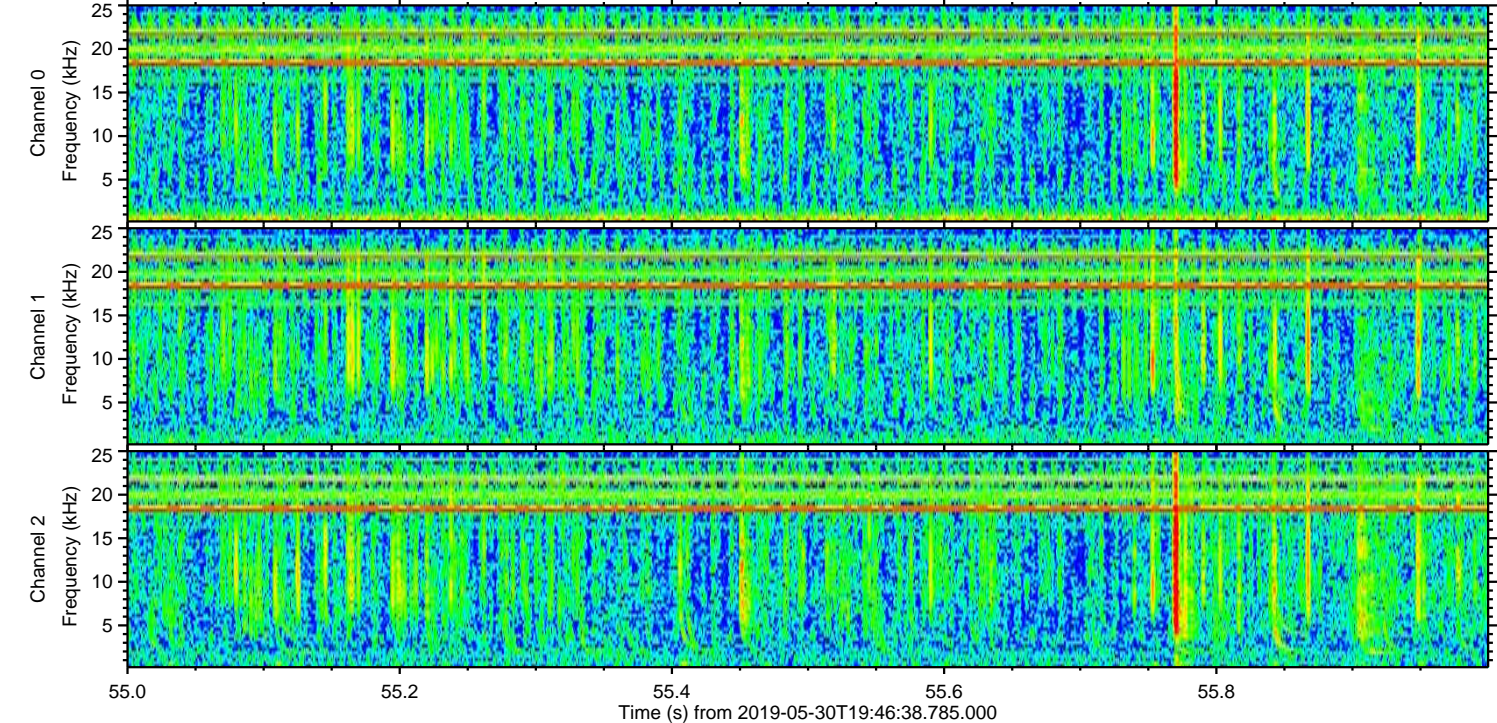
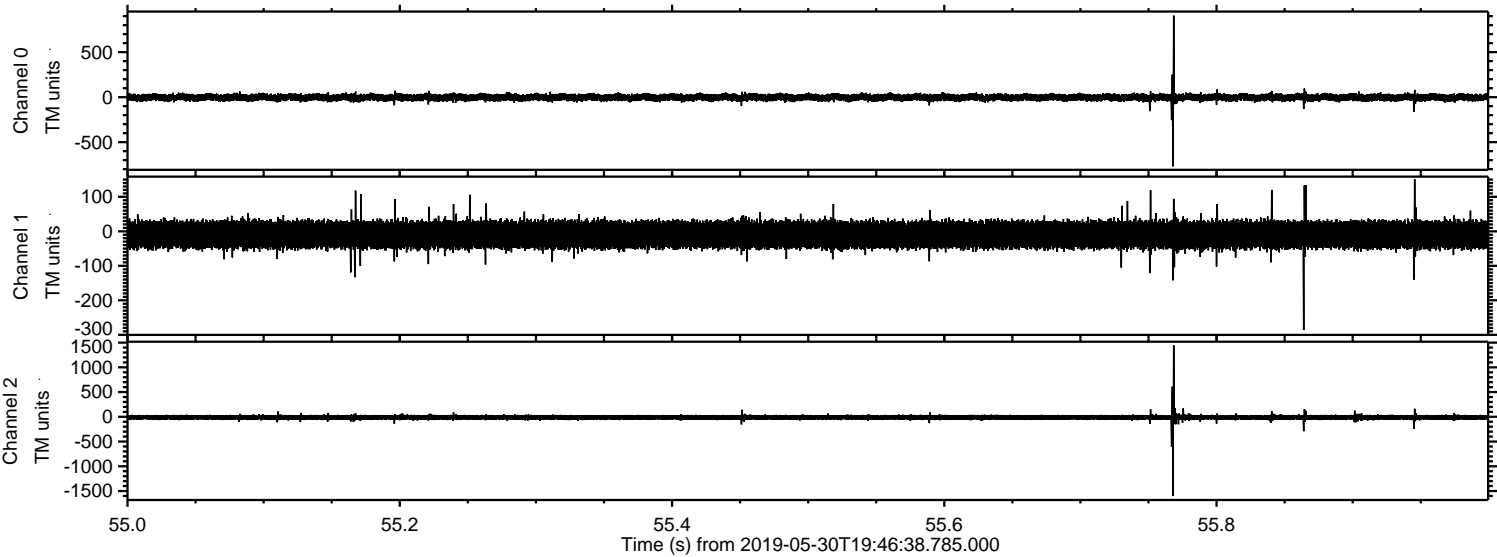


ELMAVAN 3D WAVEFORMS (Measured data sampled at 50 kHz) 51000 packets of 144 samples from 2019-05-30T19:46:38.785.000. Part 13/147

Processed Thu May 30 21:54:08 2019 by ELM ver.2012-10-06 from 001__elm20190530_194637__dat00.bin



Processed Thu May 30 21:54:09 2019 by ELM ver.2012-10-06 from 001_elm20190530_194637__dat00.bin

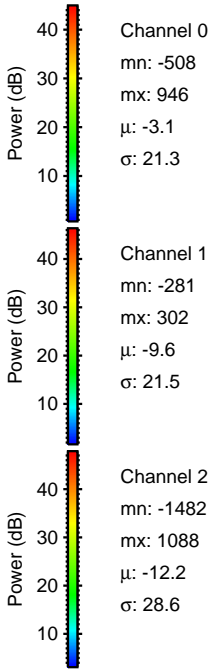
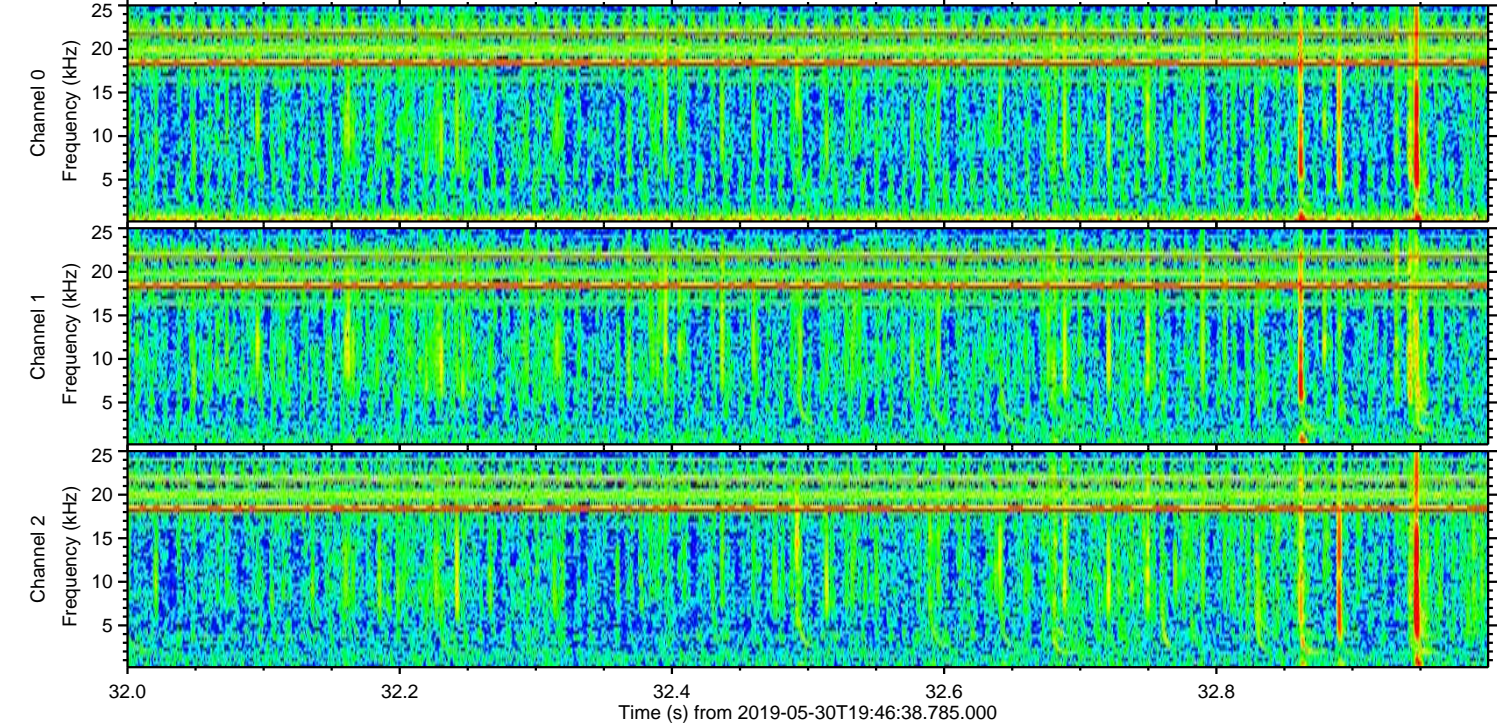
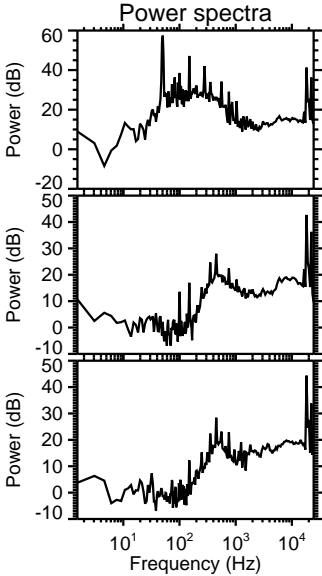
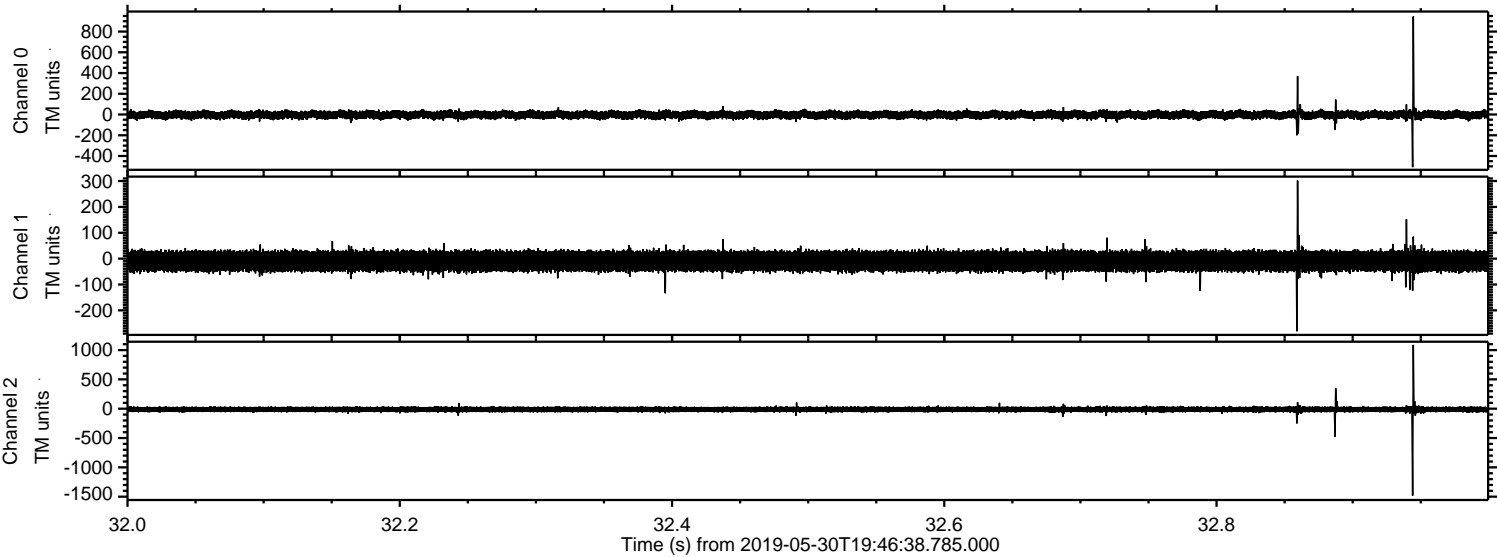


Channel 0
mn: -769
mx: 906
 μ : -3.2
 σ : 21.0

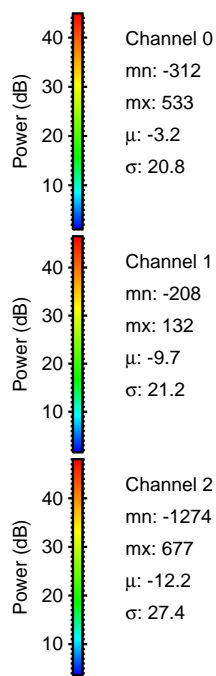
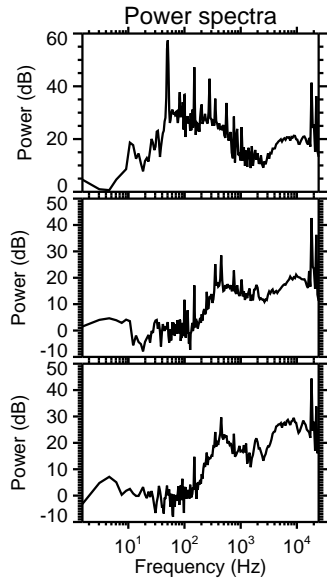
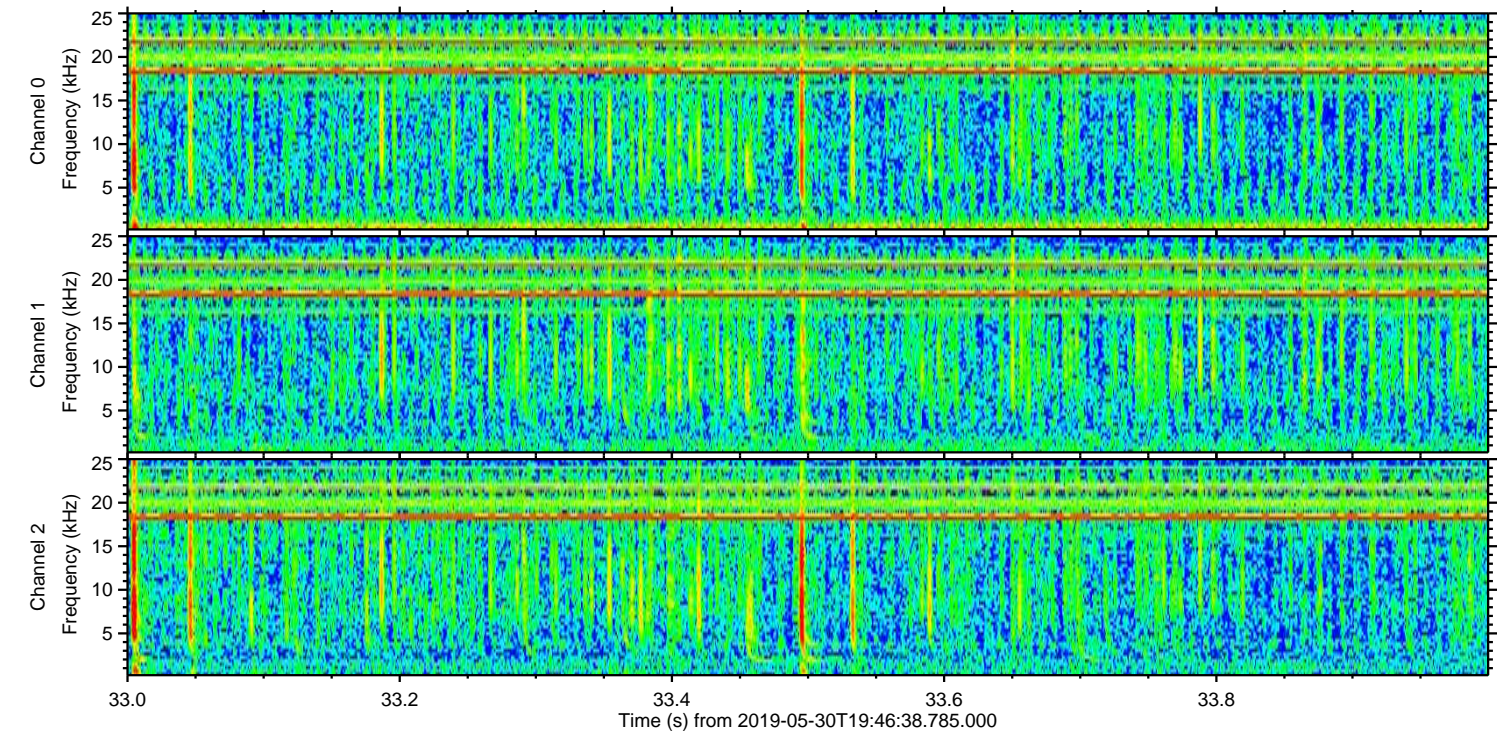
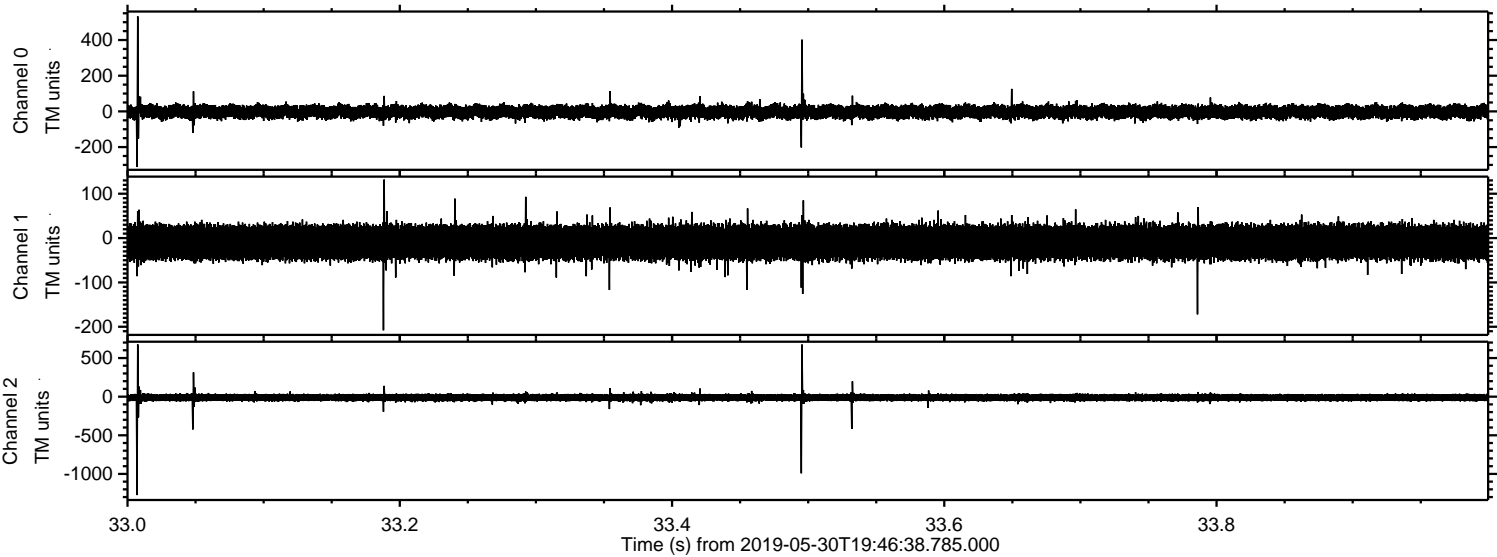
Channel 1
mn: -286
mx: 151
 μ : -9.7
 σ : 21.5

Channel 2
mn: -1602
mx: 1446
 μ : -12.2
 σ : 28.7

Processed Thu May 30 21:54:10 2019 by ELM ver.2012-10-06 from 001__elm20190530_194637__dat00.bin



Processed Thu May 30 21:54:11 2019 by ELM ver.2012-10-06 from 001__elm20190530_194637__dat00.bin



Processed Thu May 30 21:54:11 2019 by ELM ver.2012-10-06 from 001__elm20190530_194637__dat00.bin

