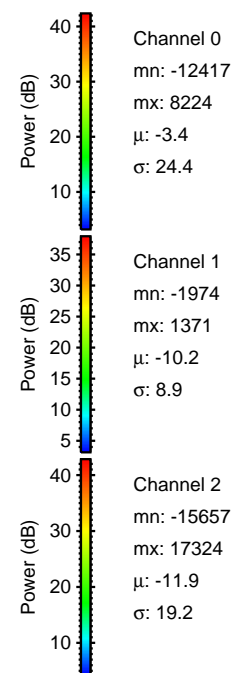
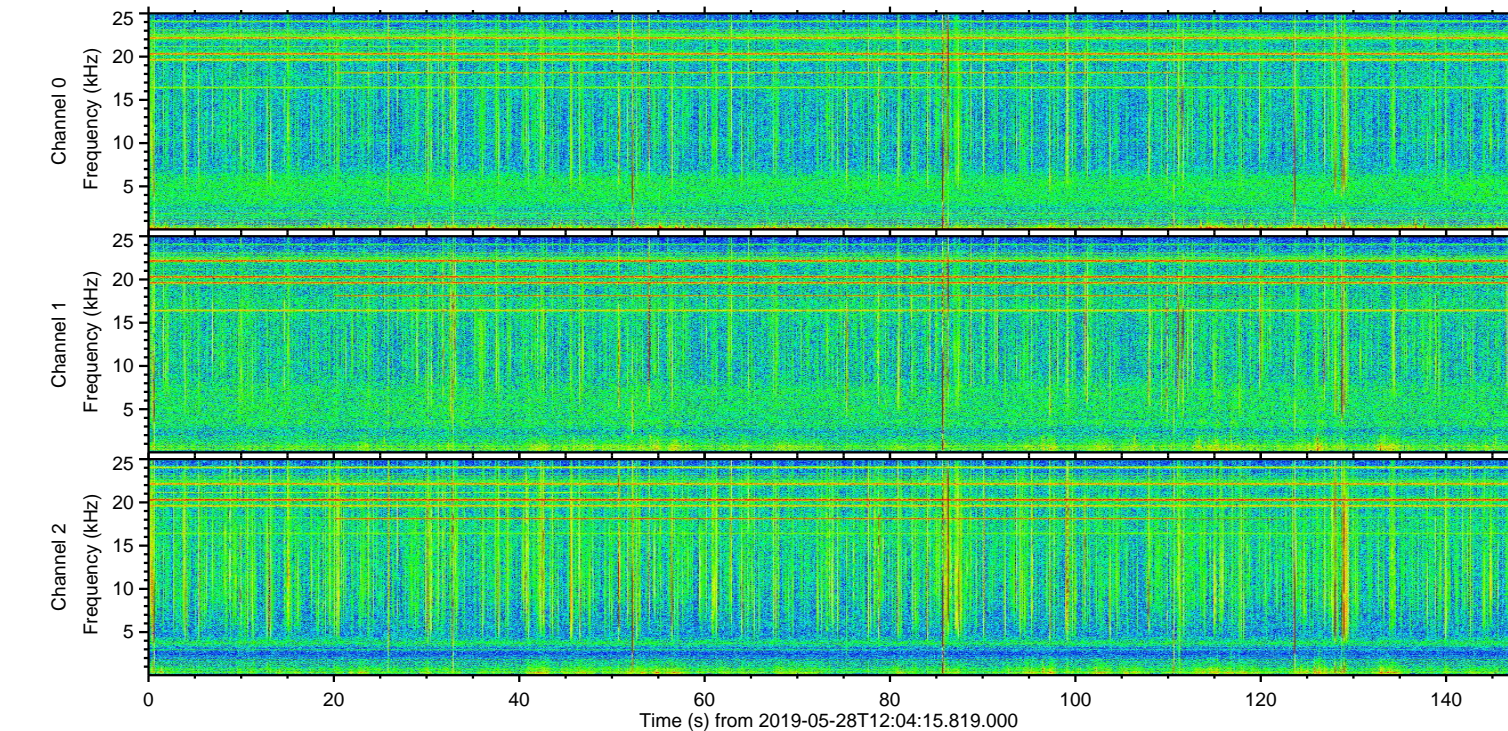
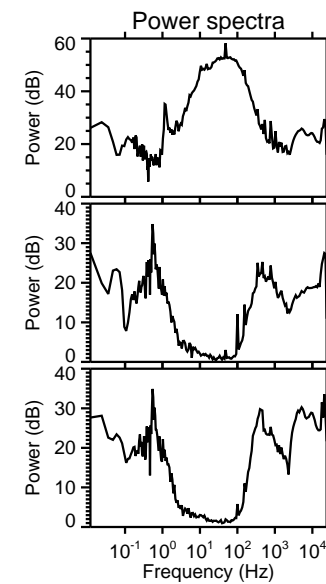
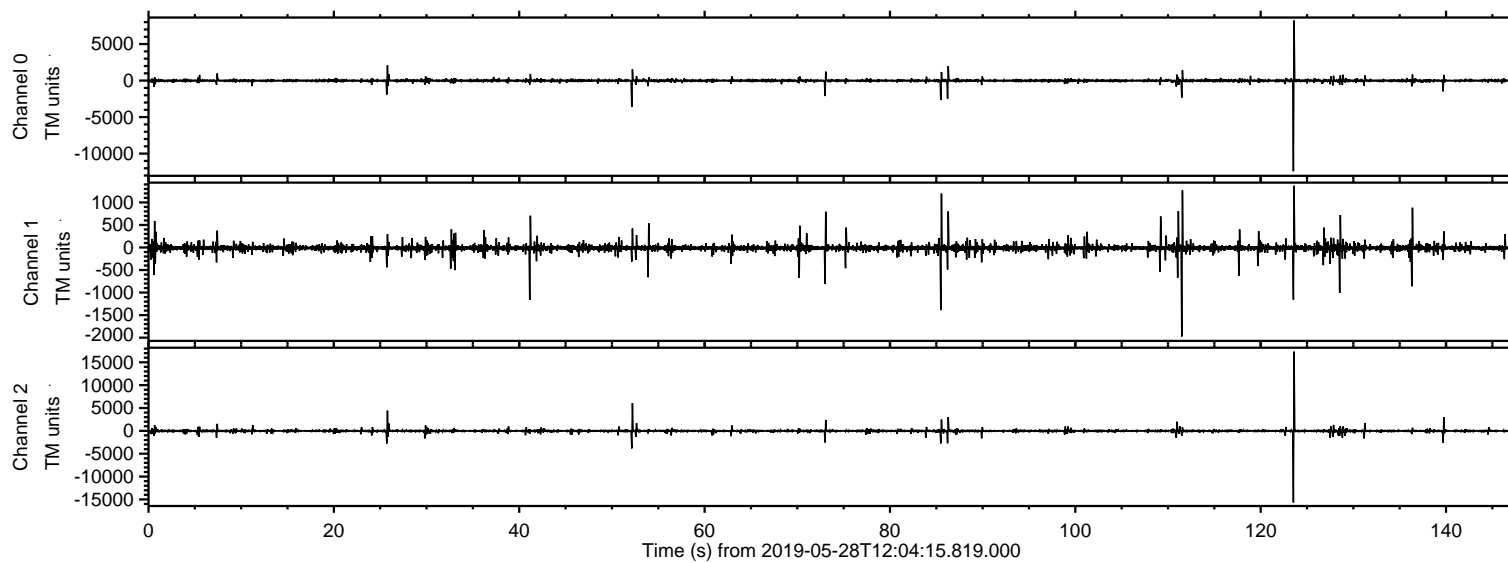


# ELMAVAN 3D WAVEFORMS (Measured data sampled at 50 kHz) 51000 packets of 144 samples from 2019-05-28T12:04:15.819.000.

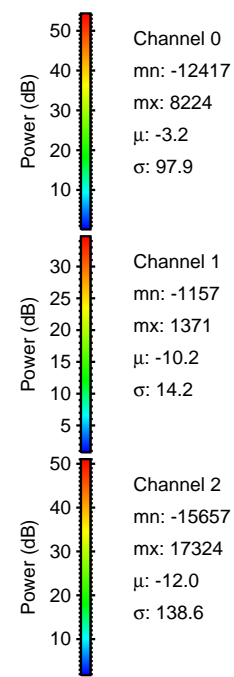
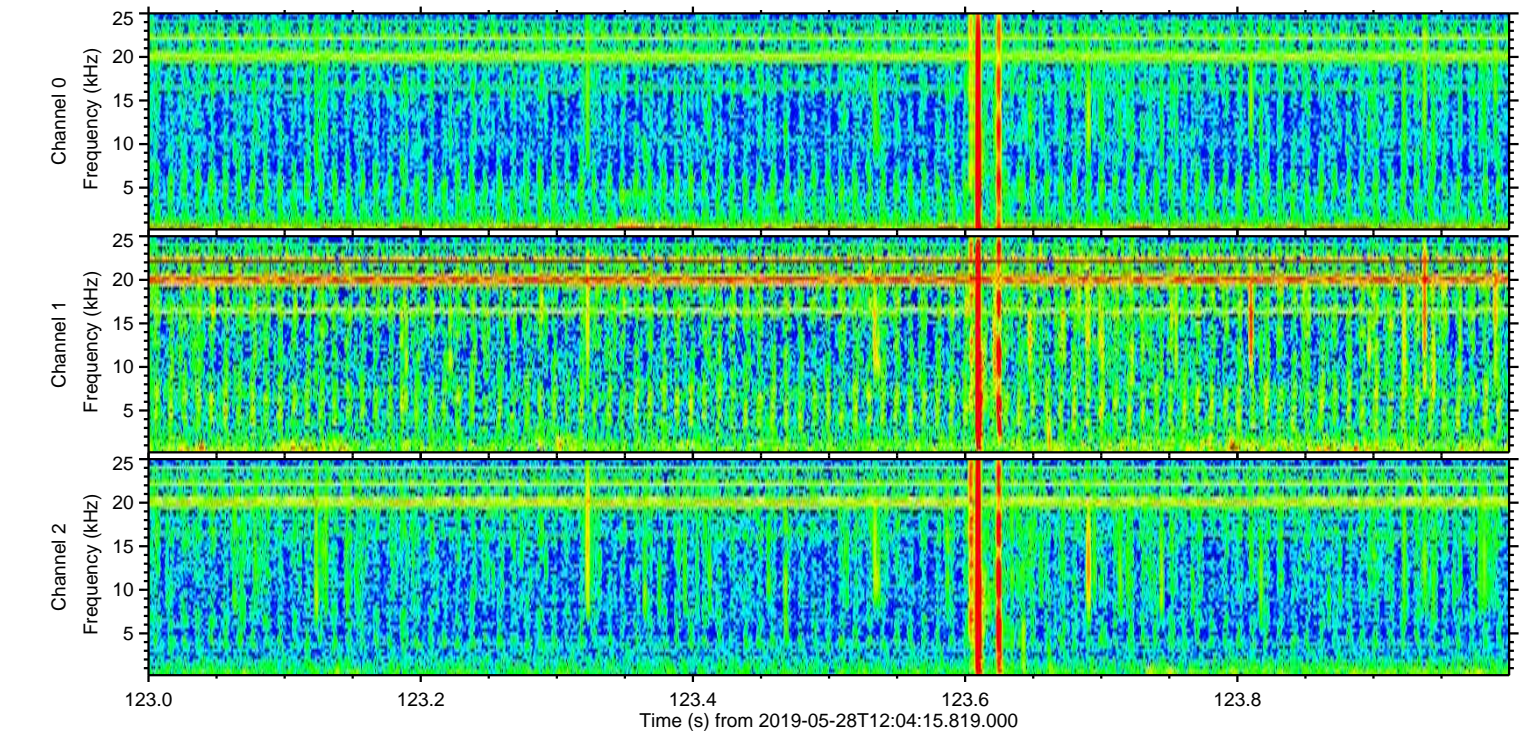
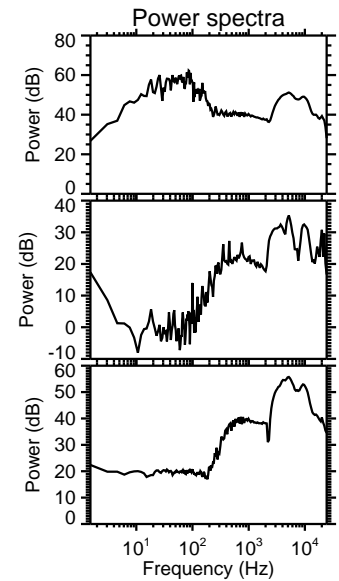
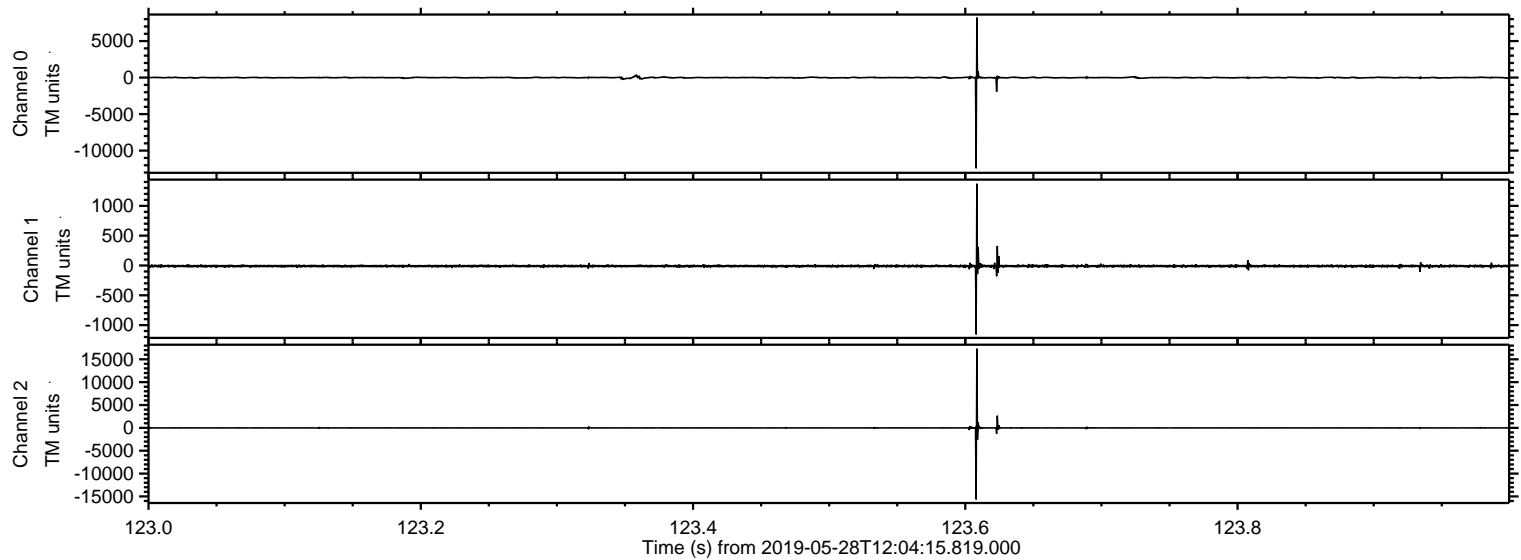
Processed Tue May 28 14:12:12 2019 by ELM ver.2012-10-06 from 001\_\_elm20190528\_120414\_\_dat00.bin





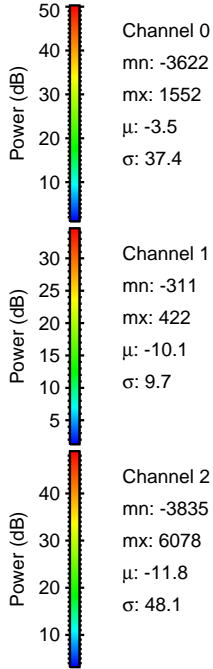
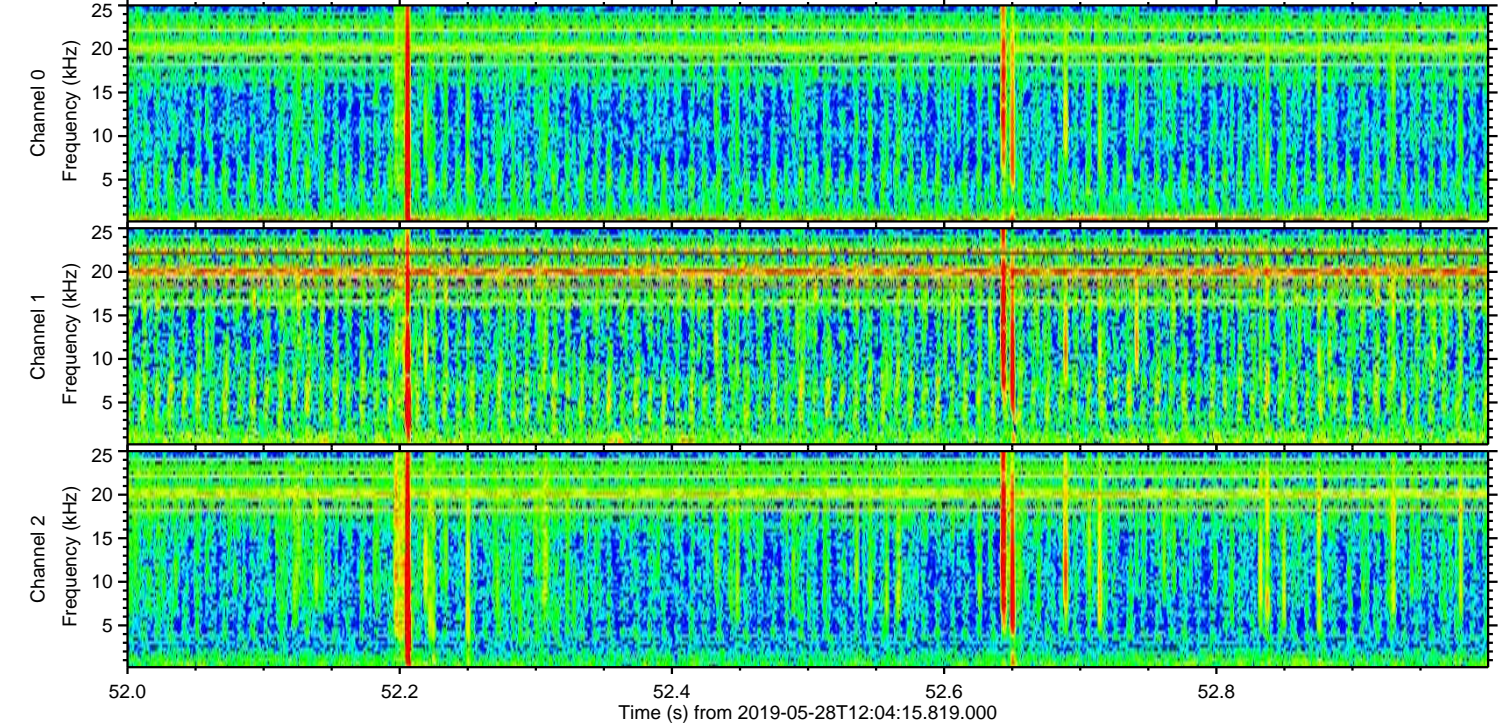
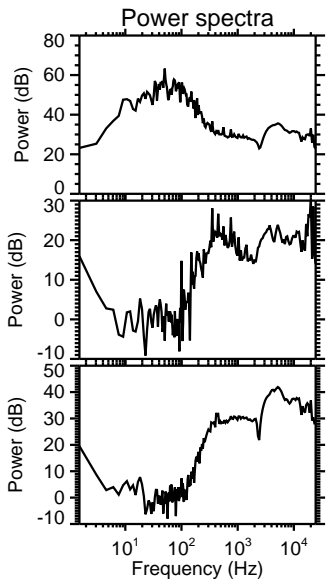
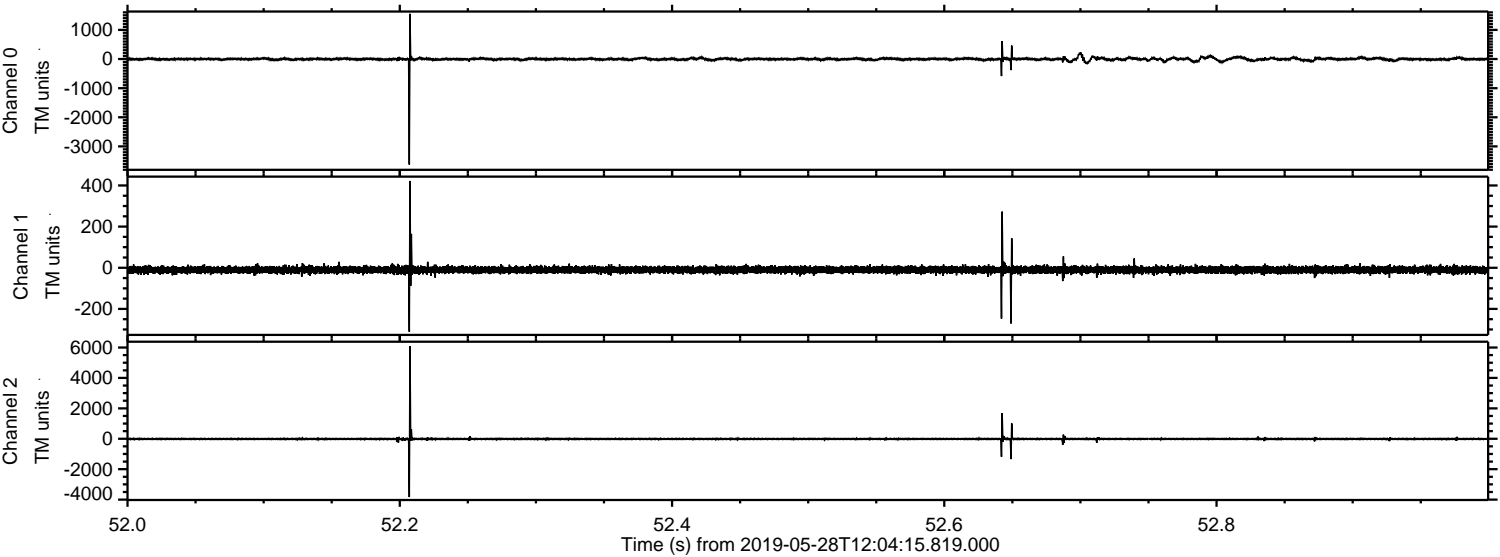
ELMAVAN 3D WAVEFORMS (Measured data sampled at 50 kHz) 51000 packets of 144 samples from 2019-05-28T12:04:15.819.000. Part 124/147

Processed Tue May 28 14:12:23 2019 by ELM ver.2012-10-06 from 001\_\_elm20190528\_120414\_\_dat00.bin





Processed Tue May 28 14:12:23 2019 by ELM ver.2012-10-06 from 001\_\_elm20190528\_120414\_\_dat00.bin



Channel 0  
mn: -3622  
mx: 1552  
 $\mu$ : -3.5  
 $\sigma$ : 37.4

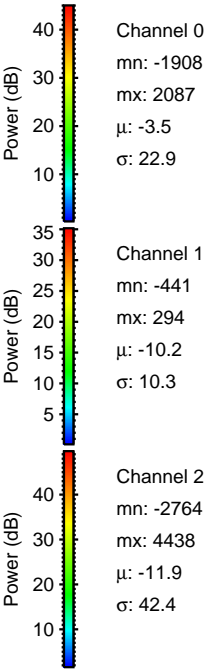
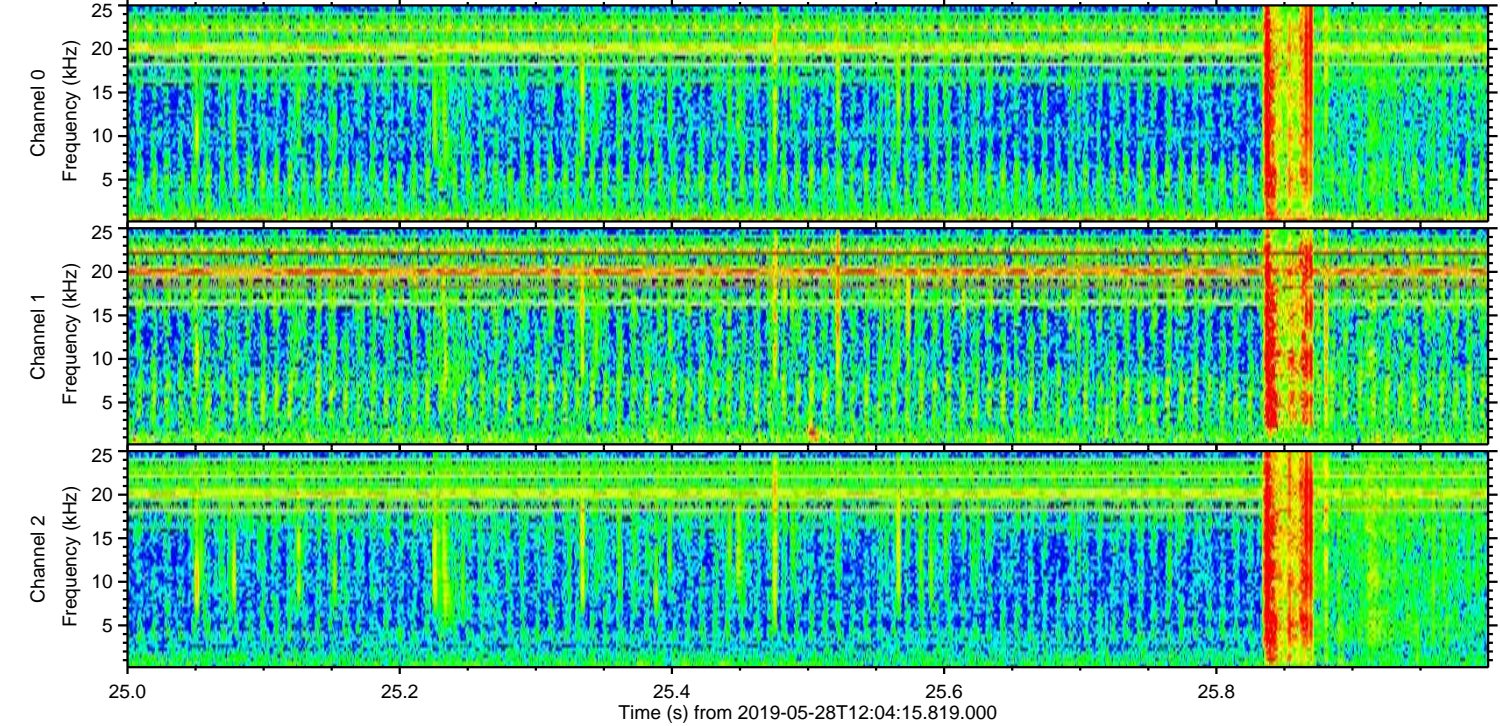
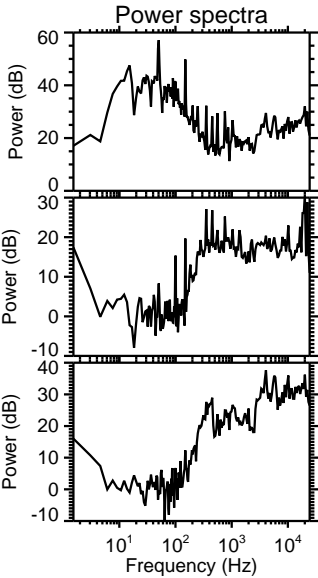
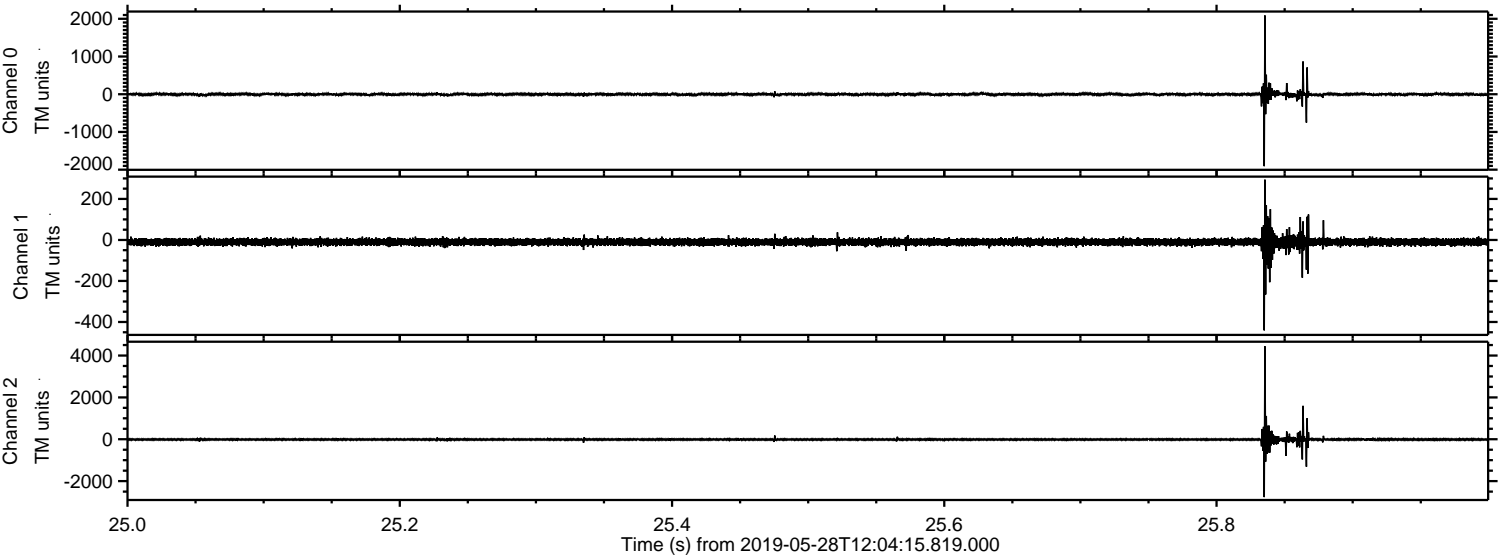
Channel 1  
mn: -311  
mx: 422  
 $\mu$ : -10.1  
 $\sigma$ : 9.7

Channel 2  
mn: -3835  
mx: 6078  
 $\mu$ : -11.8  
 $\sigma$ : 48.1



ELMAVAN 3D WAVEFORMS (Measured data sampled at 50 kHz) 51000 packets of 144 samples from 2019-05-28T12:04:15.819.000. Part 26/147

Processed Tue May 28 14:12:24 2019 by ELM ver.2012-10-06 from 001\_\_elm20190528\_120414\_\_dat00.bin



Channel 0  
mn: -1908  
mx: 2087  
 $\mu$ : -3.5  
 $\sigma$ : 22.9

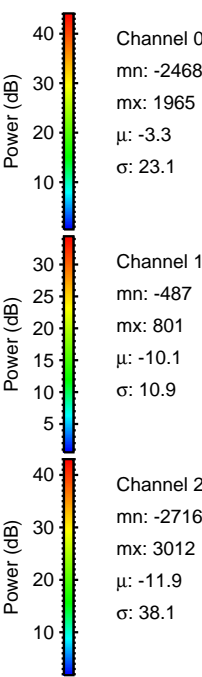
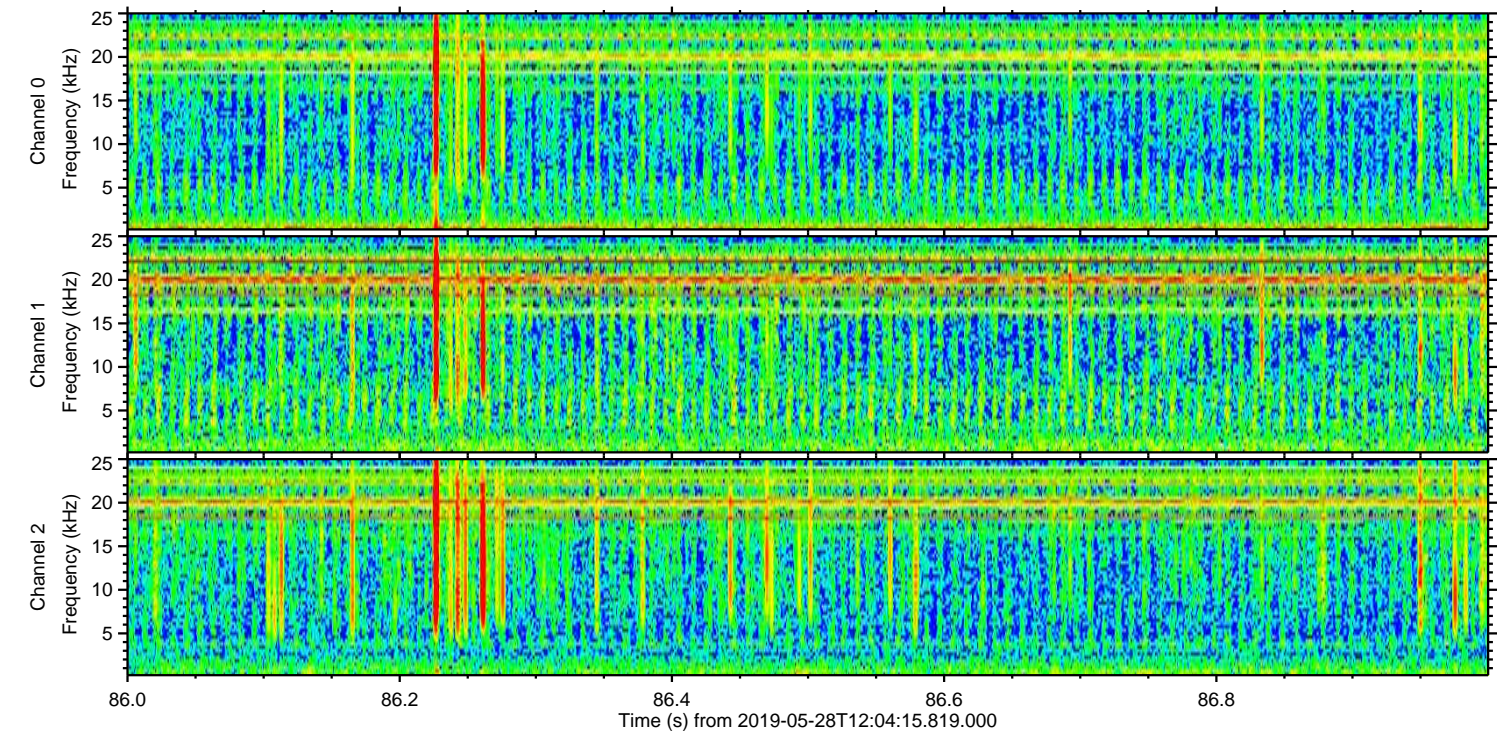
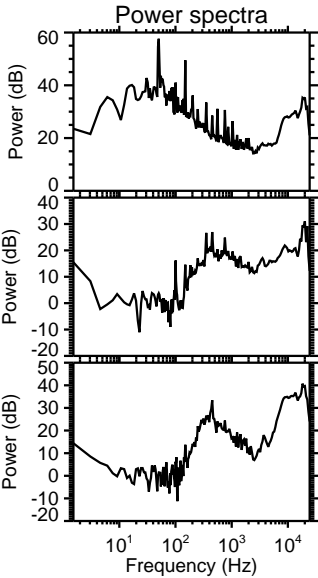
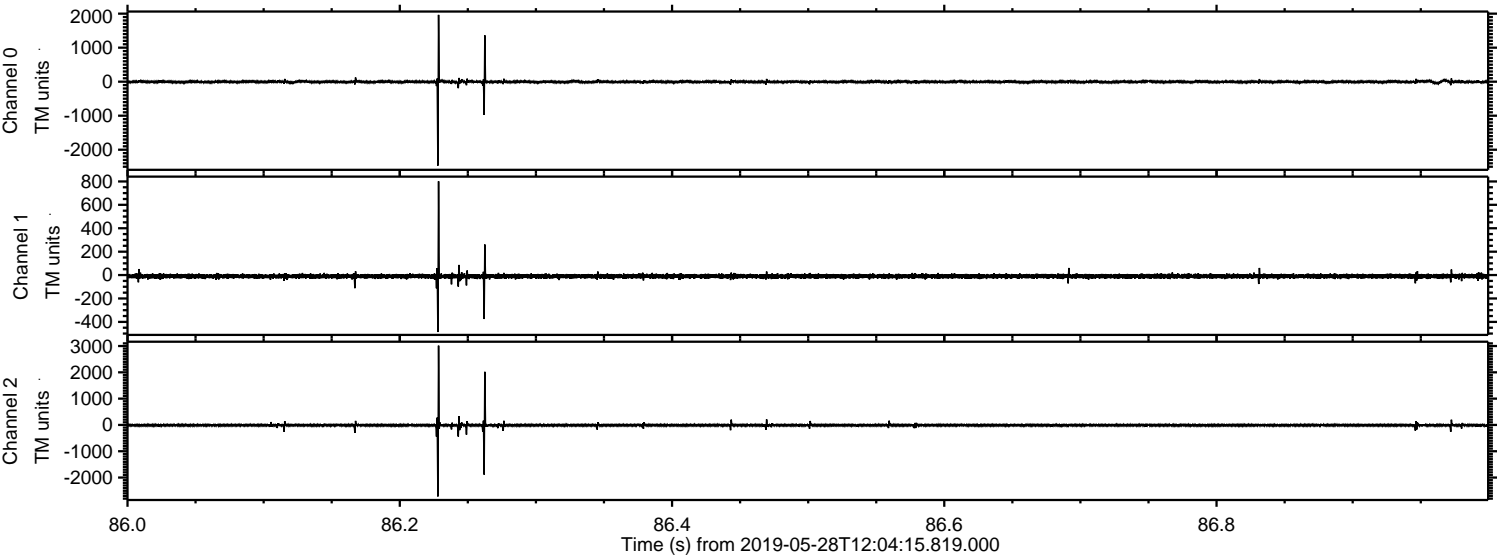
Channel 1  
mn: -441  
mx: 294  
 $\mu$ : -10.2  
 $\sigma$ : 10.3

Channel 2  
mn: -2764  
mx: 4438  
 $\mu$ : -11.9  
 $\sigma$ : 42.4



ELMAVAN 3D WAVEFORMS (Measured data sampled at 50 kHz) 51000 packets of 144 samples from 2019-05-28T12:04:15.819.000. Part 87/147

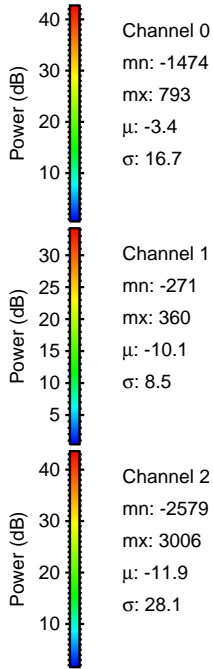
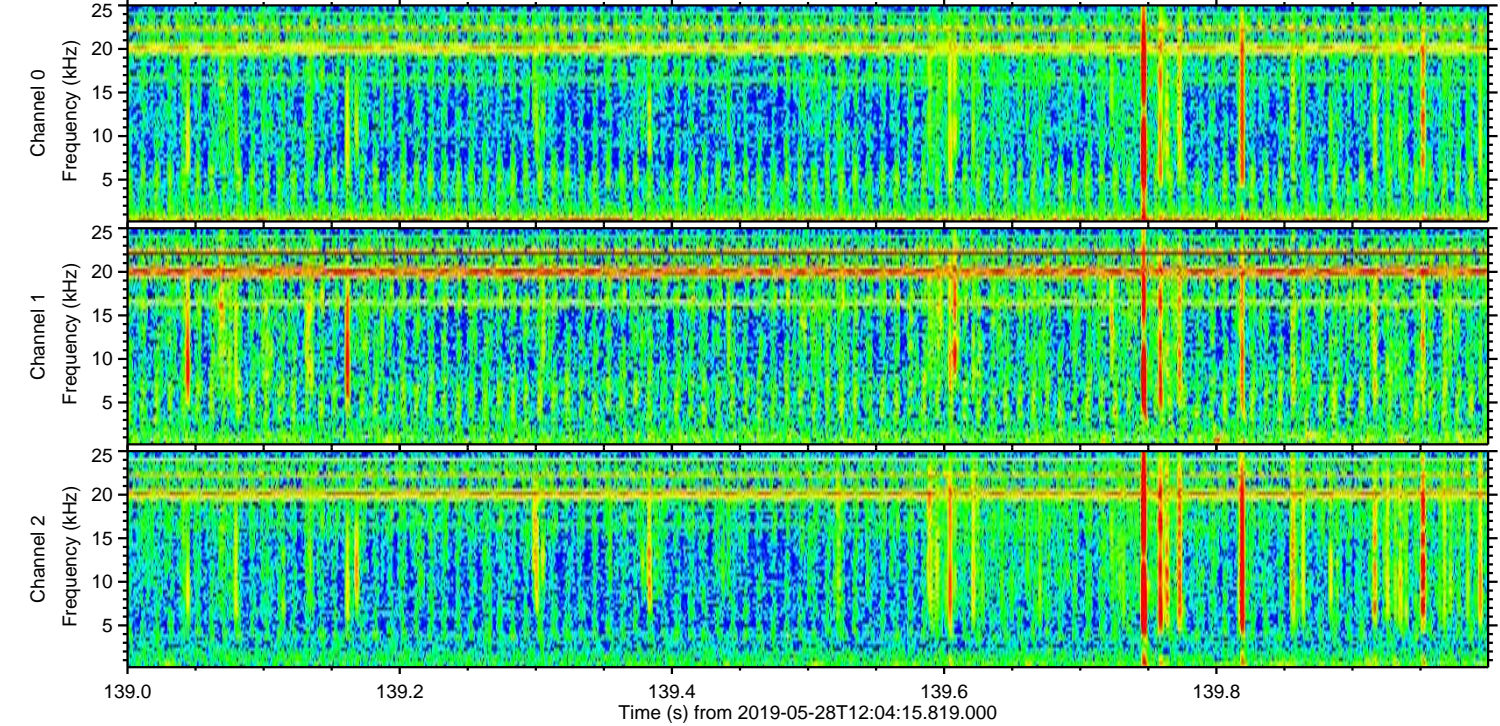
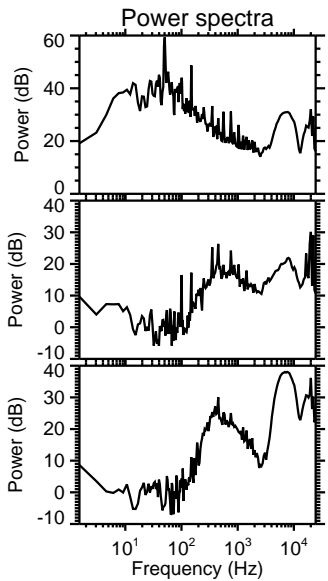
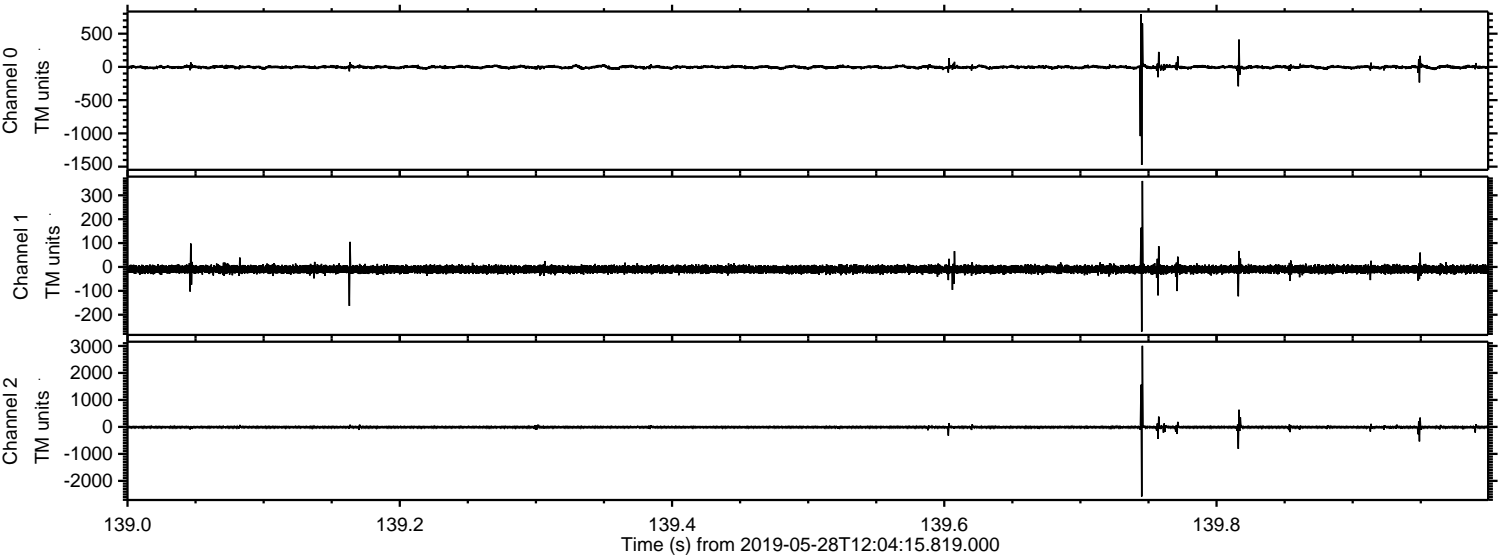
Processed Tue May 28 14:12:25 2019 by ELM ver.2012-10-06 from 001\_\_elm20190528\_120414\_\_dat00.bin





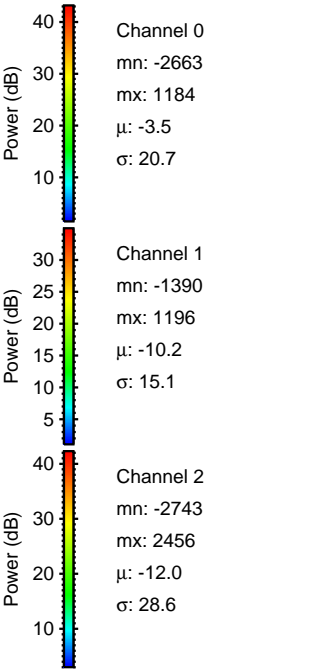
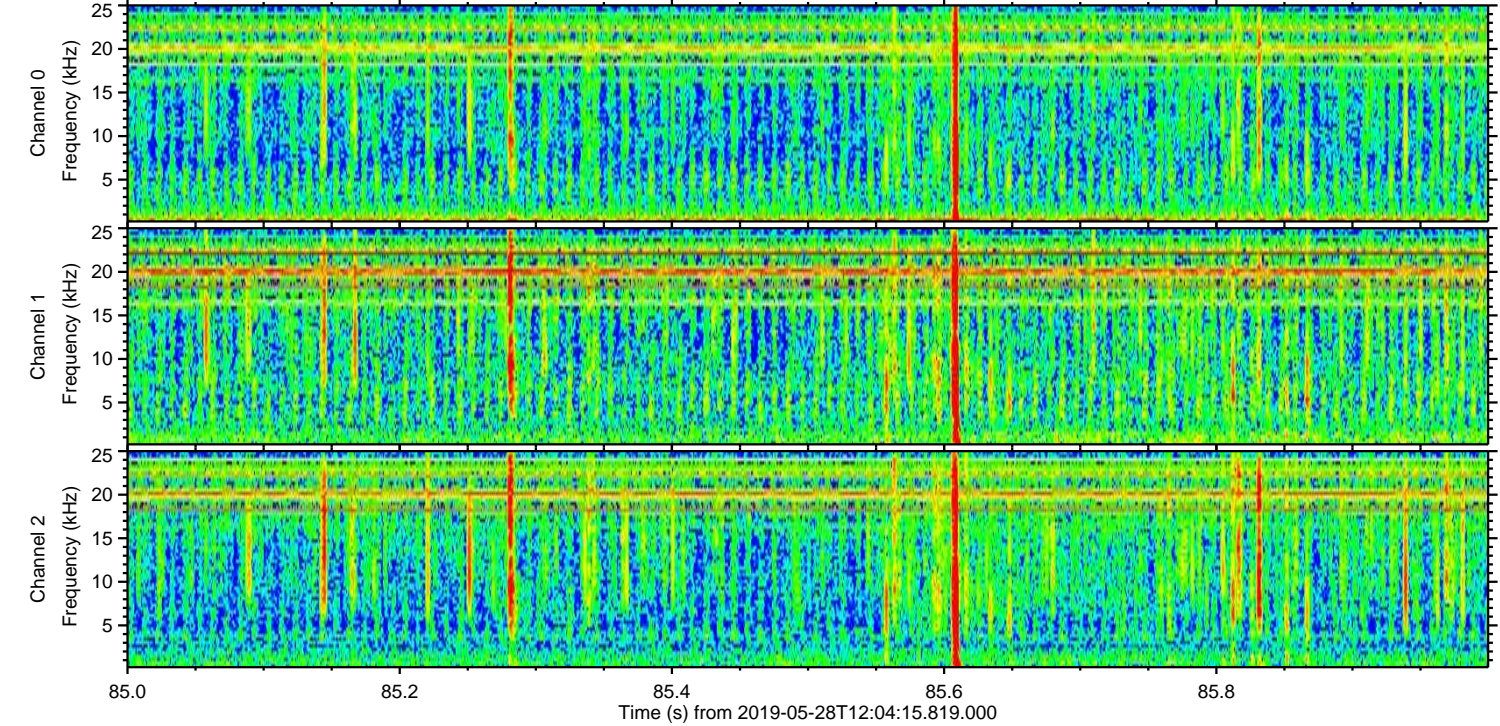
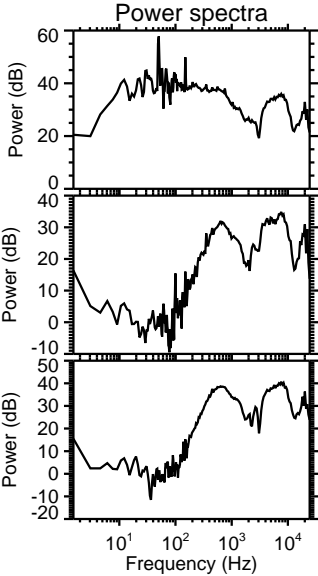
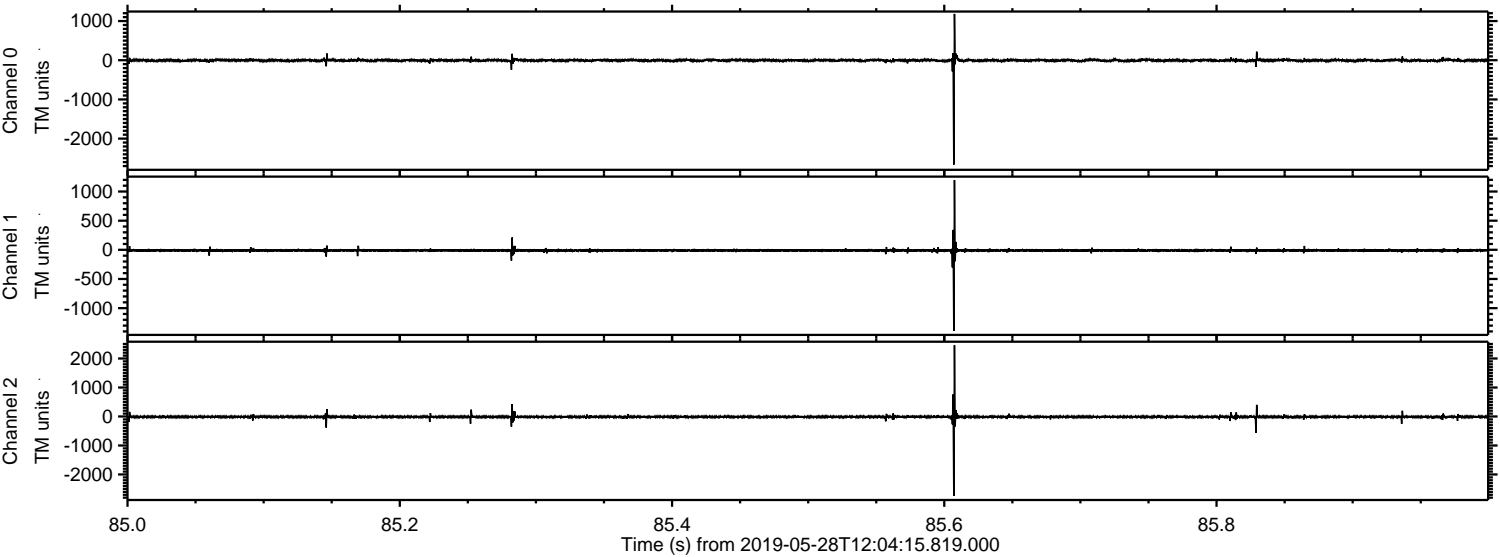
ELMAVAN 3D WAVEFORMS (Measured data sampled at 50 kHz) 51000 packets of 144 samples from 2019-05-28T12:04:15.819.000. Part 140/147

Processed Tue May 28 14:12:25 2019 by ELM ver.2012-10-06 from 001\_\_elm20190528\_120414\_\_dat00.bin



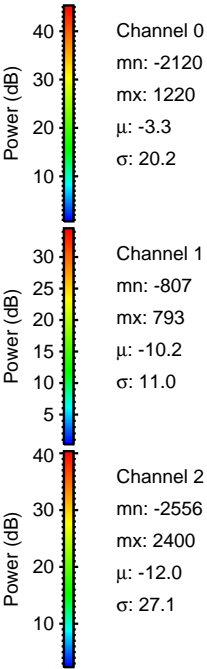
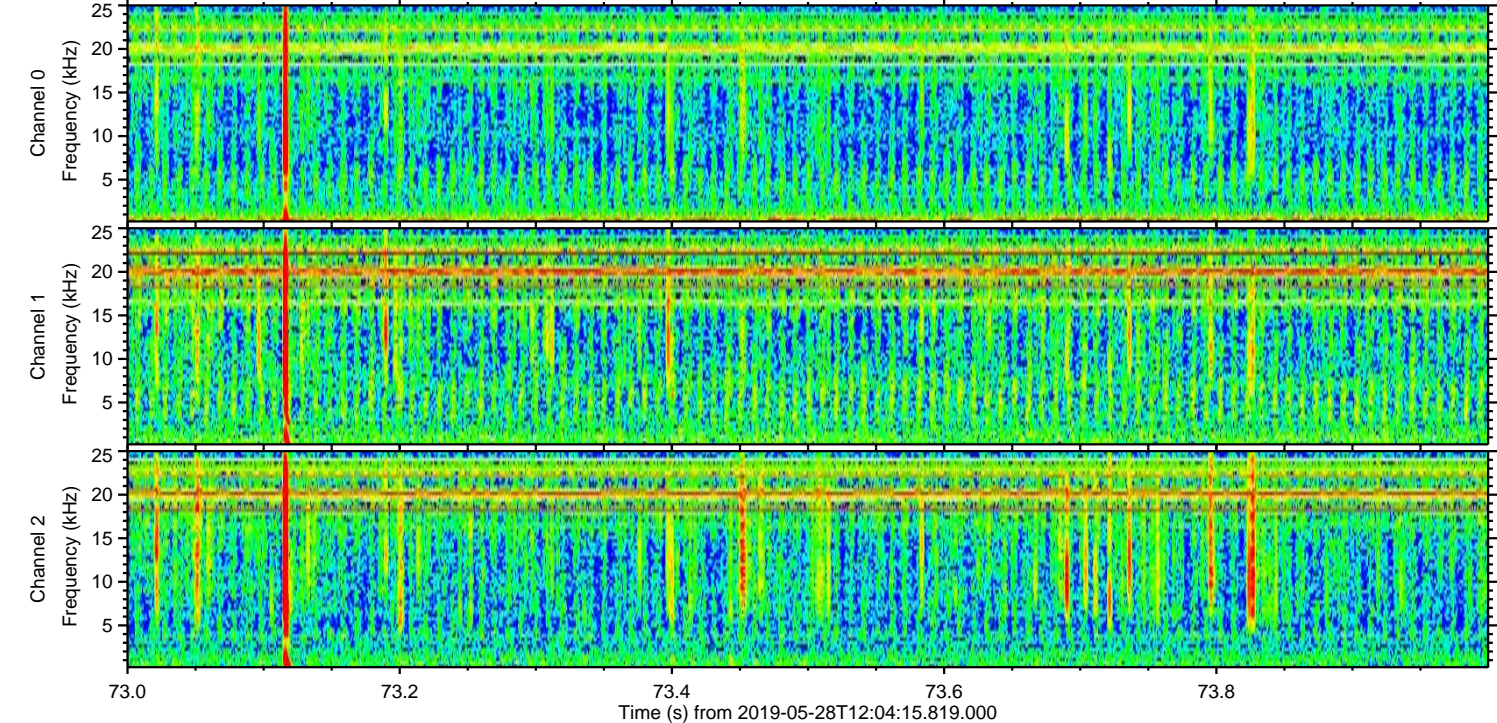
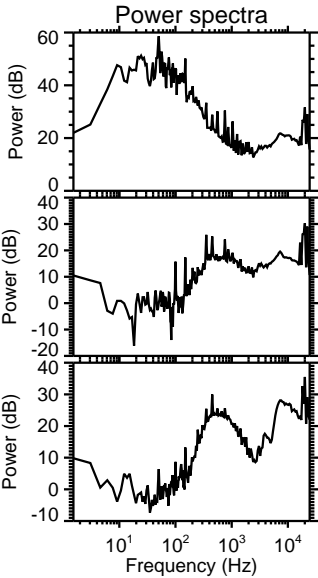
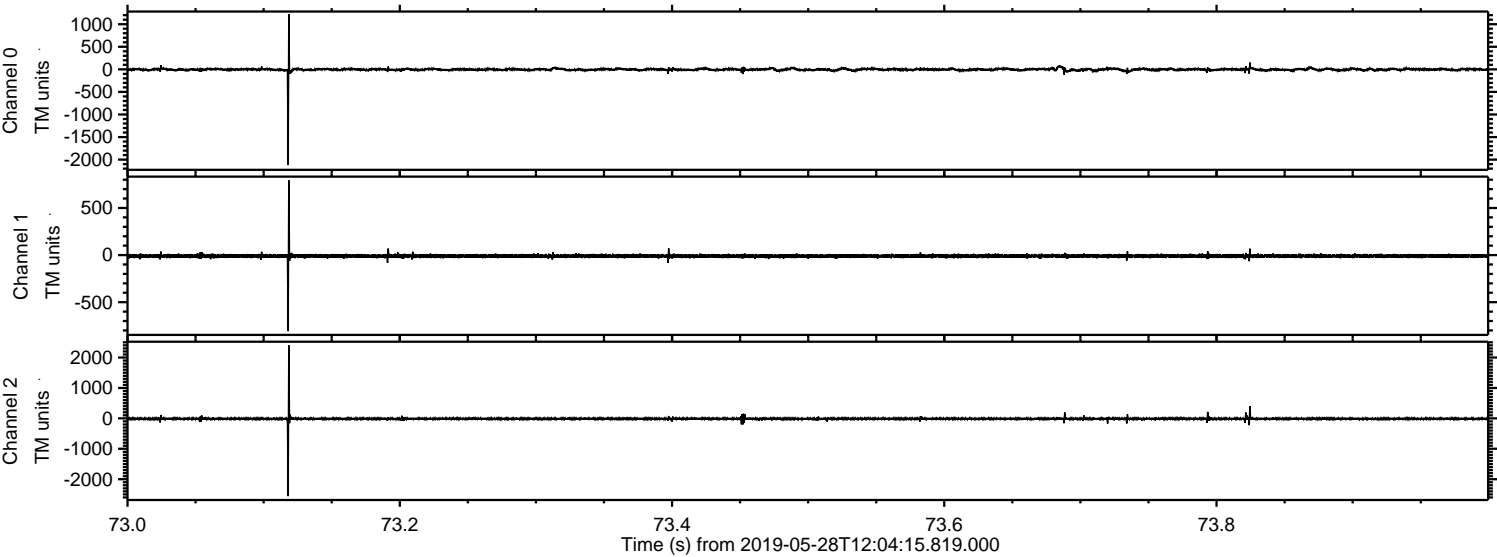


Processed Tue May 28 14:12:27 2019 by ELM ver.2012-10-06 from 001\_\_elm20190528\_120414\_\_dat00.bin





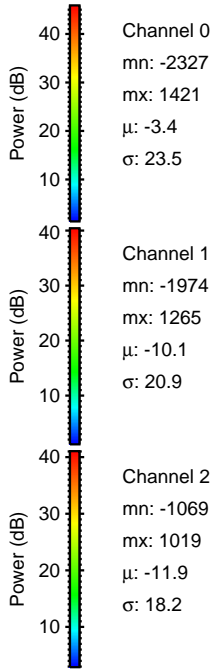
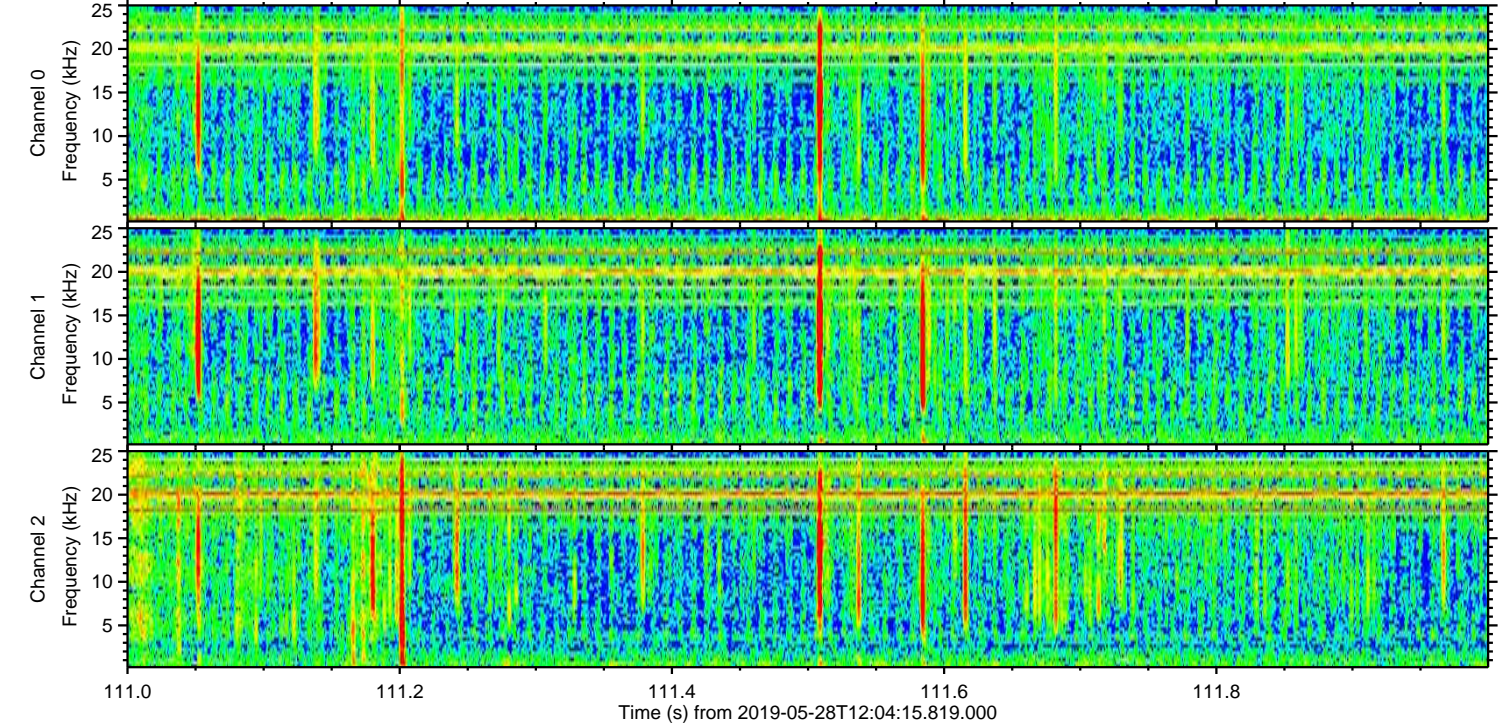
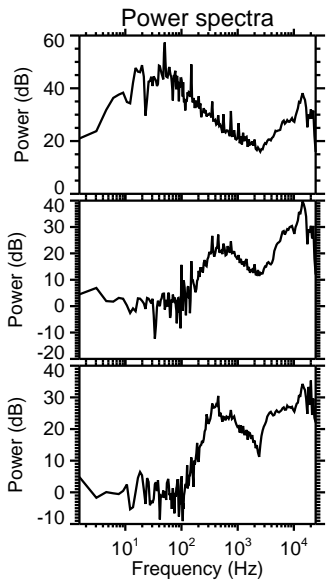
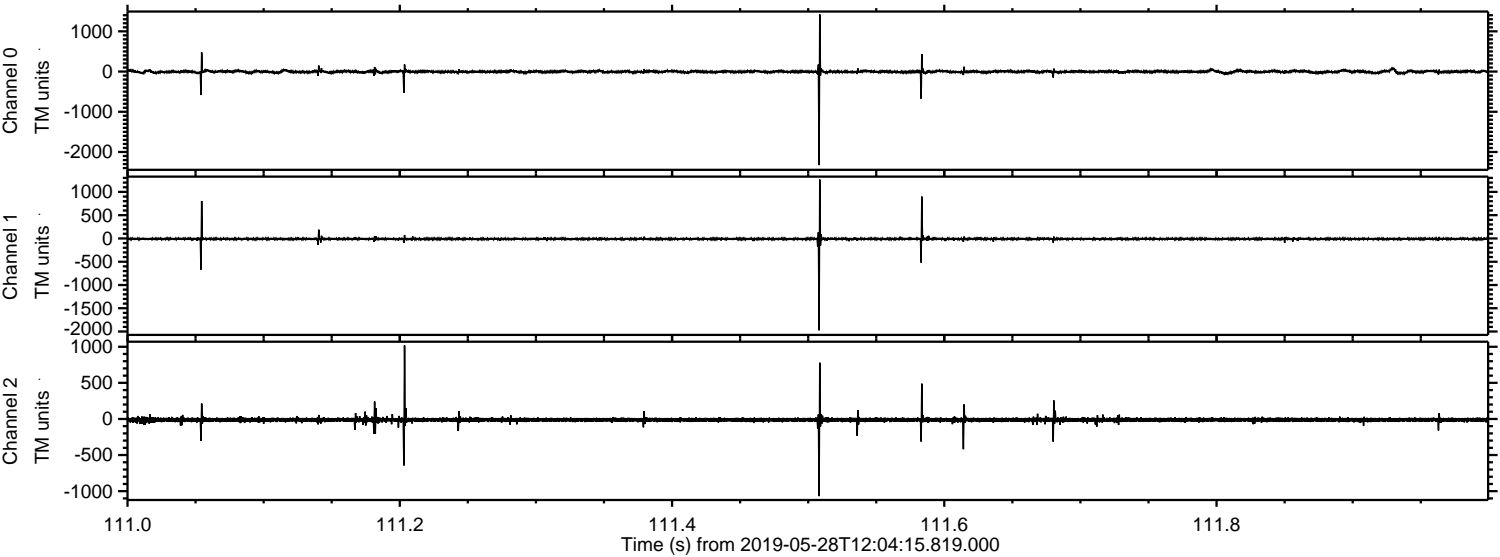
Processed Tue May 28 14:12:28 2019 by ELM ver.2012-10-06 from 001\_\_elm20190528\_120414\_\_dat00.bin





ELMAVAN 3D WAVEFORMS (Measured data sampled at 50 kHz) 51000 packets of 144 samples from 2019-05-28T12:04:15.819.000. Part 112/147

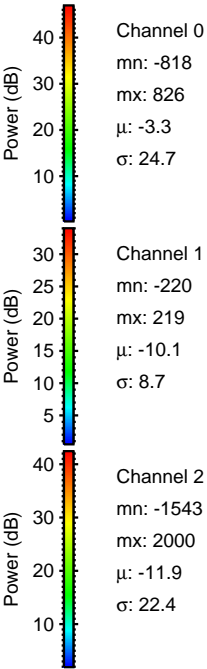
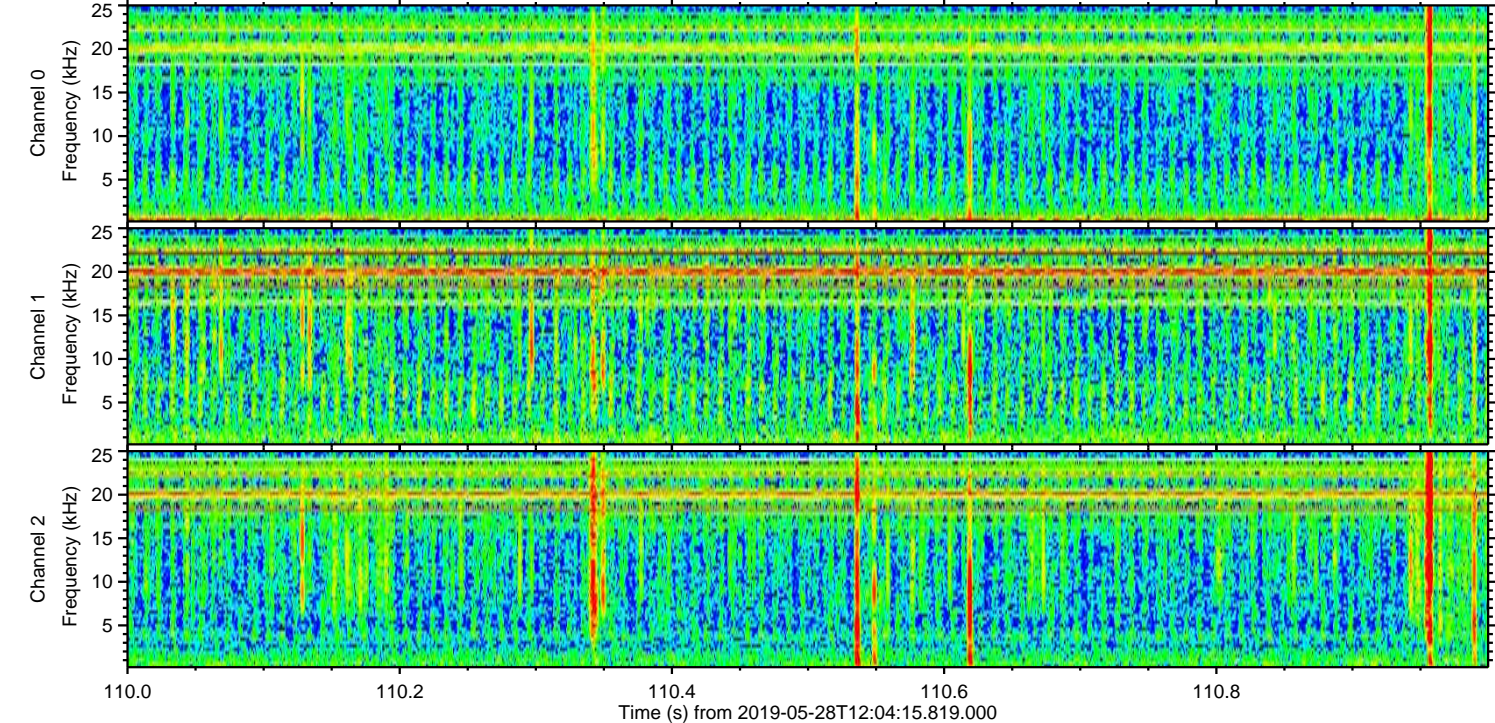
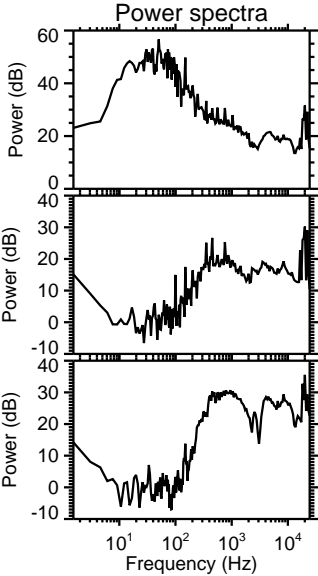
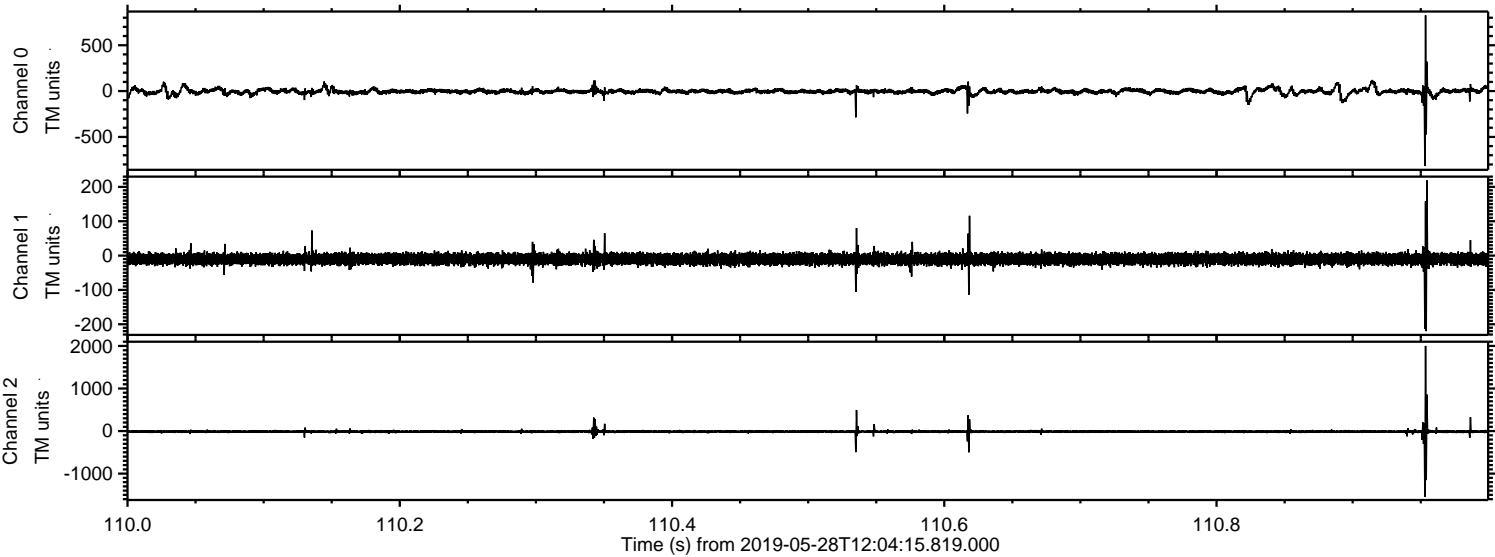
Processed Tue May 28 14:12:29 2019 by ELM ver.2012-10-06 from 001\_\_elm20190528\_120414\_\_dat00.bin





ELMAVAN 3D WAVEFORMS (Measured data sampled at 50 kHz) 51000 packets of 144 samples from 2019-05-28T12:04:15.819.000. Part 111/147

Processed Tue May 28 14:12:29 2019 by ELM ver.2012-10-06 from 001\_\_elm20190528\_120414\_\_dat00.bin





ELMAVAN 3D WAVEFORMS (Measured data sampled at 50 kHz) 51000 packets of 144 samples from 2019-05-28T12:04:15.819.000. Part 141/147

