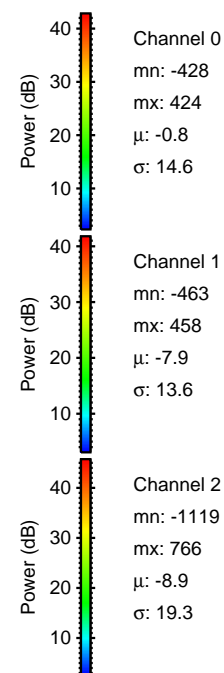
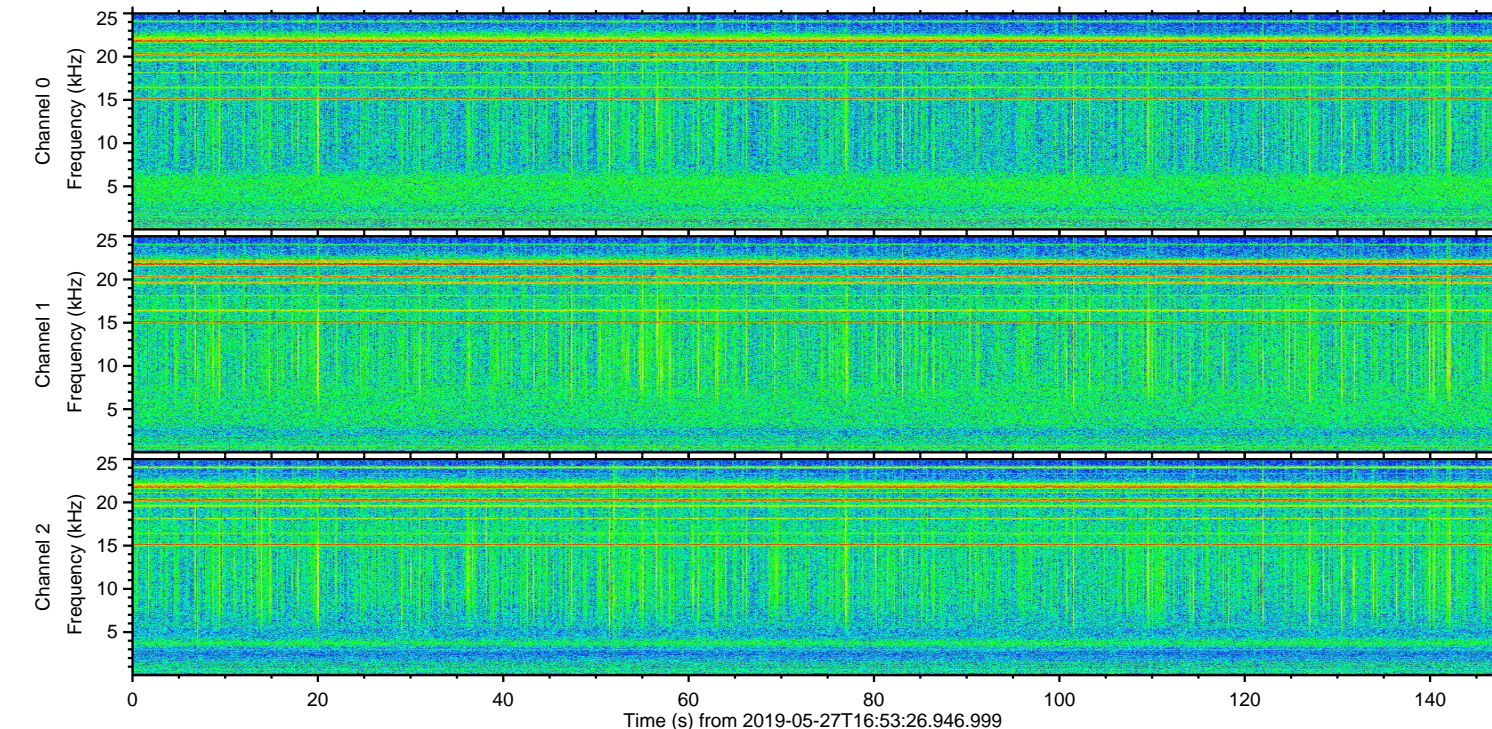
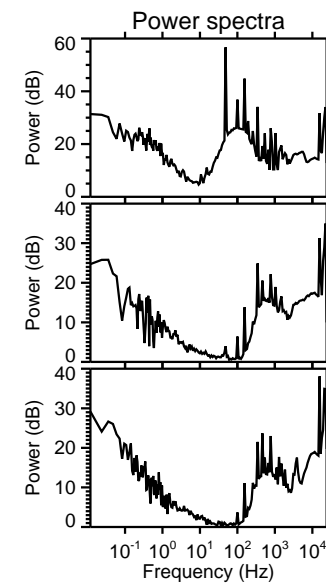
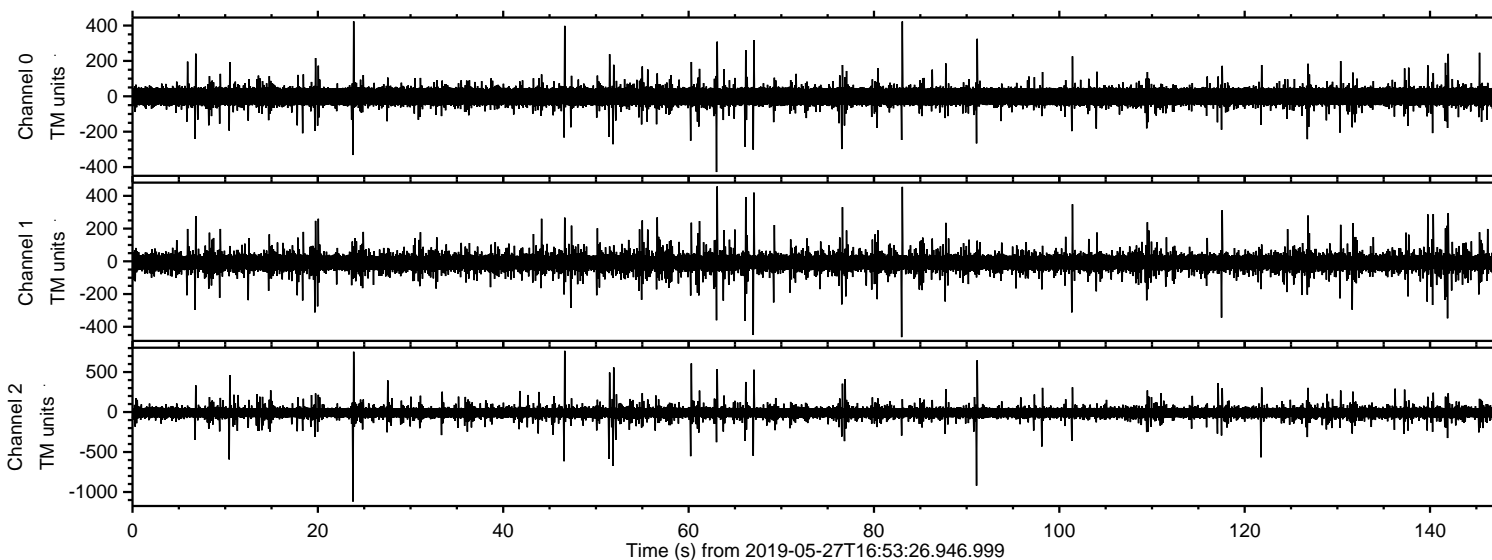


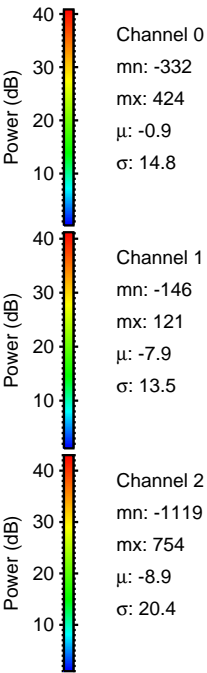
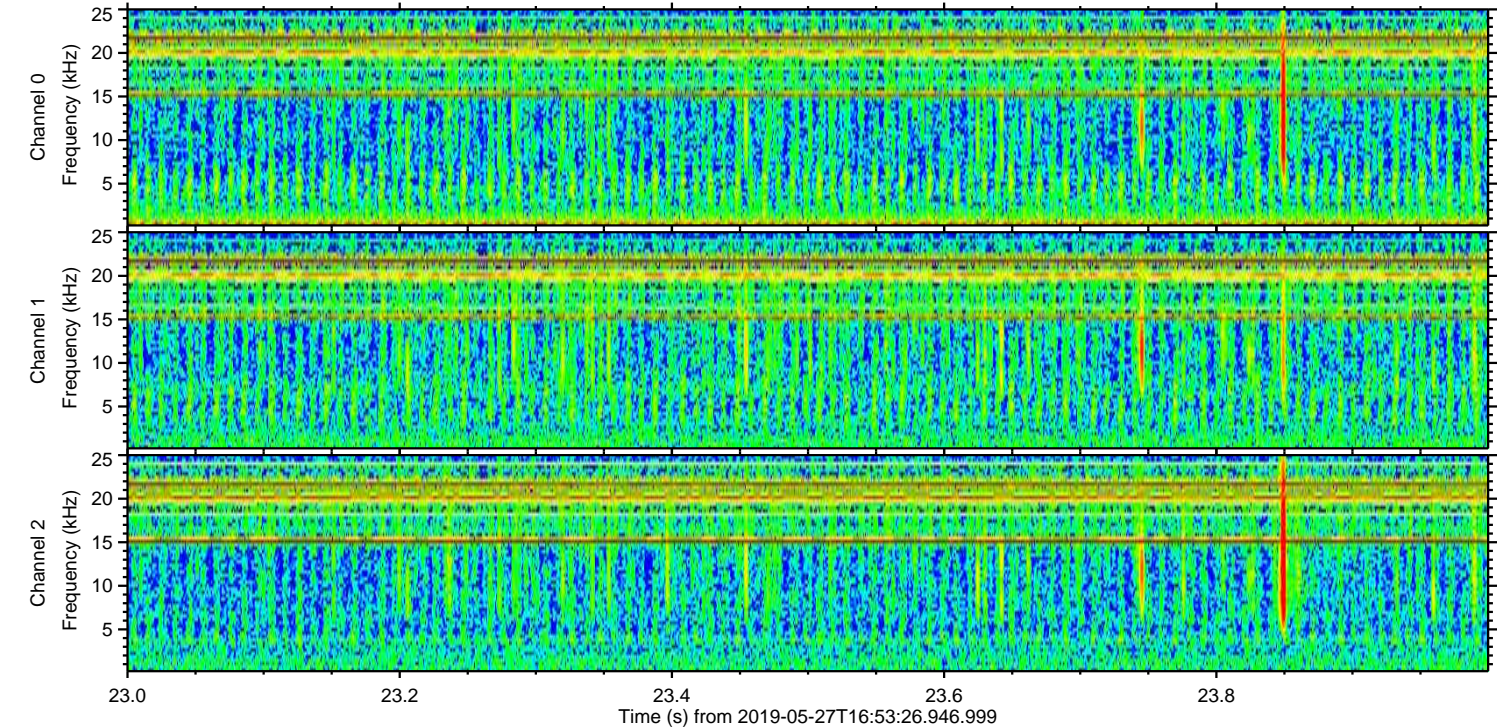
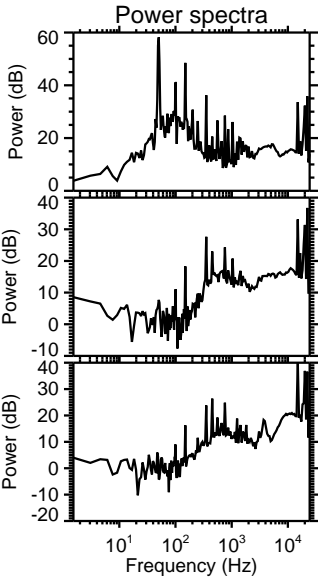
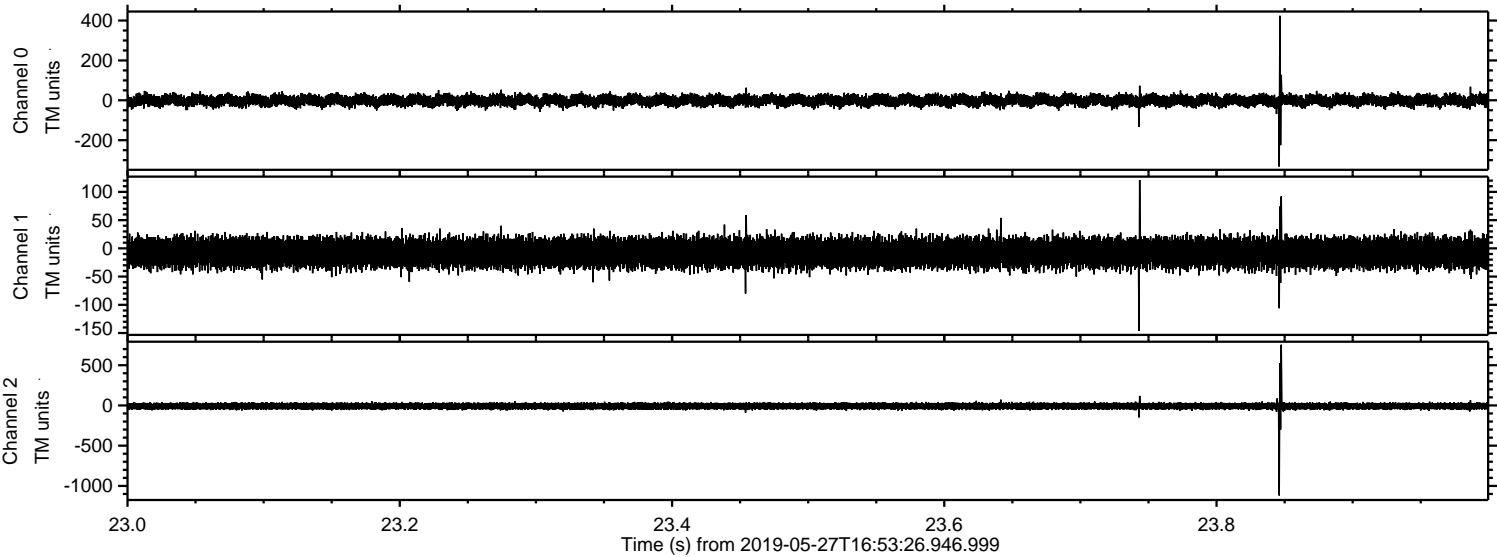
ELMAVAN 3D WAVEFORMS (Measured data sampled at 50 kHz) 51000 packets of 144 samples from 2019-05-27T16:53:26.946.999.

Processed Mon May 27 19:01:04 2019 by ELM ver.2012-10-06 from 001\_\_elm20190527\_165325\_\_dat00.bin



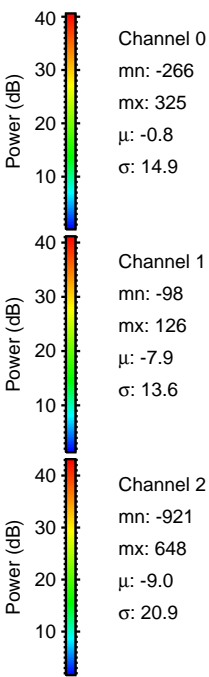
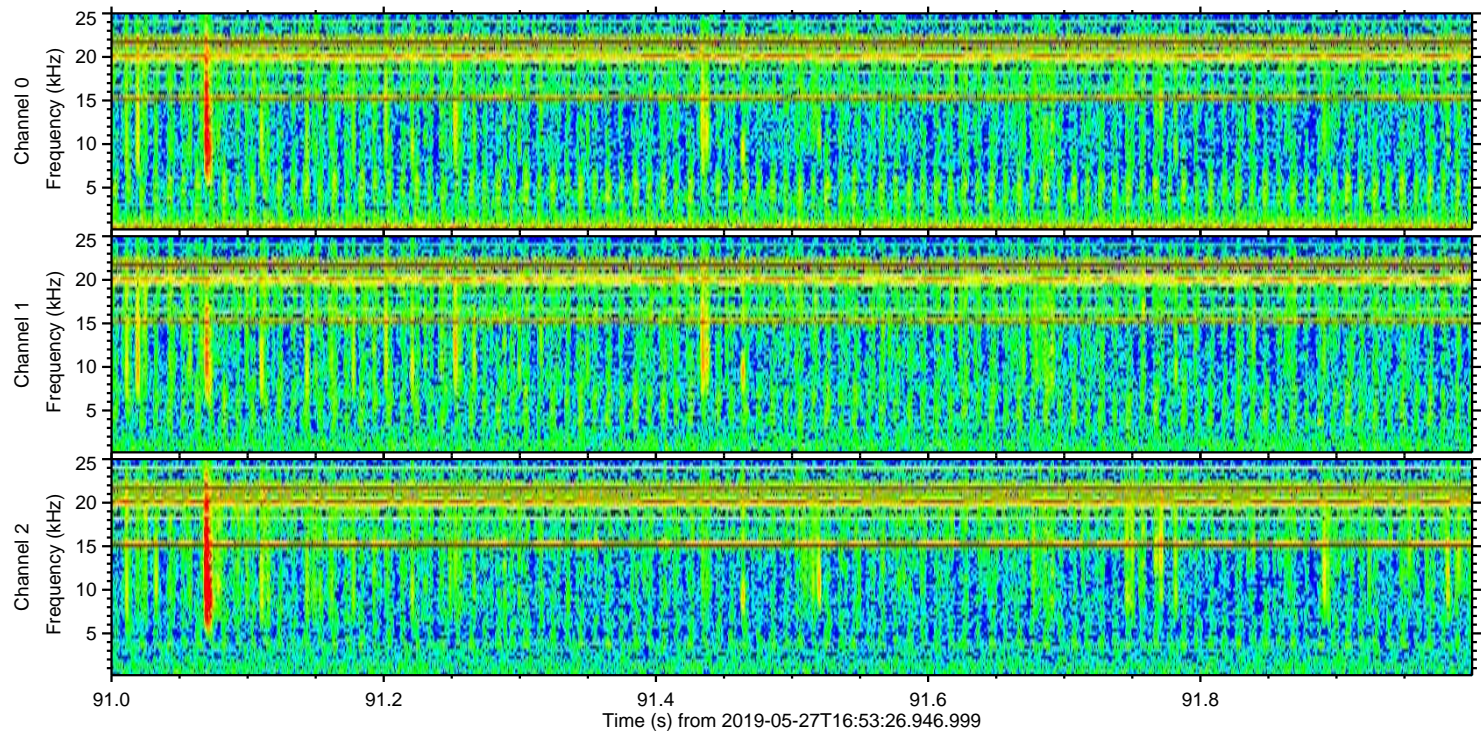
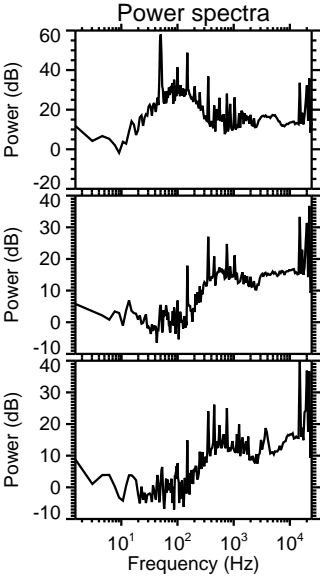
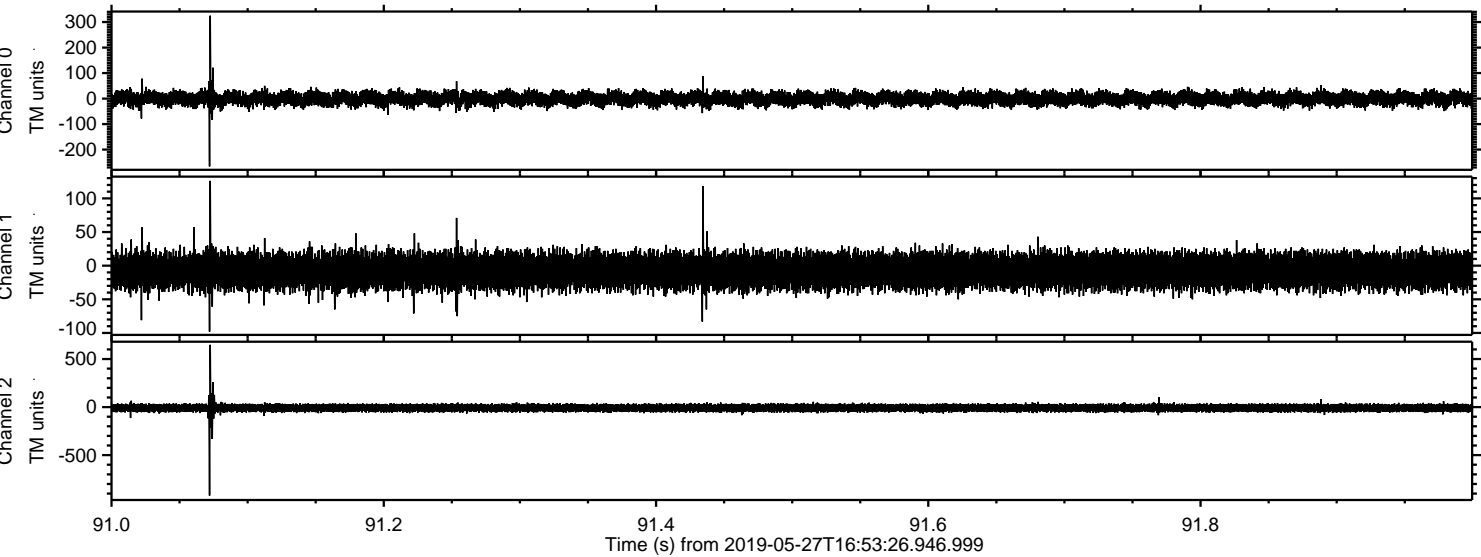


Processed Mon May 27 19:01:10 2019 by ELM ver.2012-10-06 from 001\_\_elm20190527\_165325\_\_dat00.bin



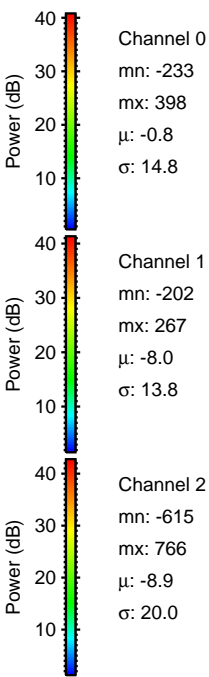
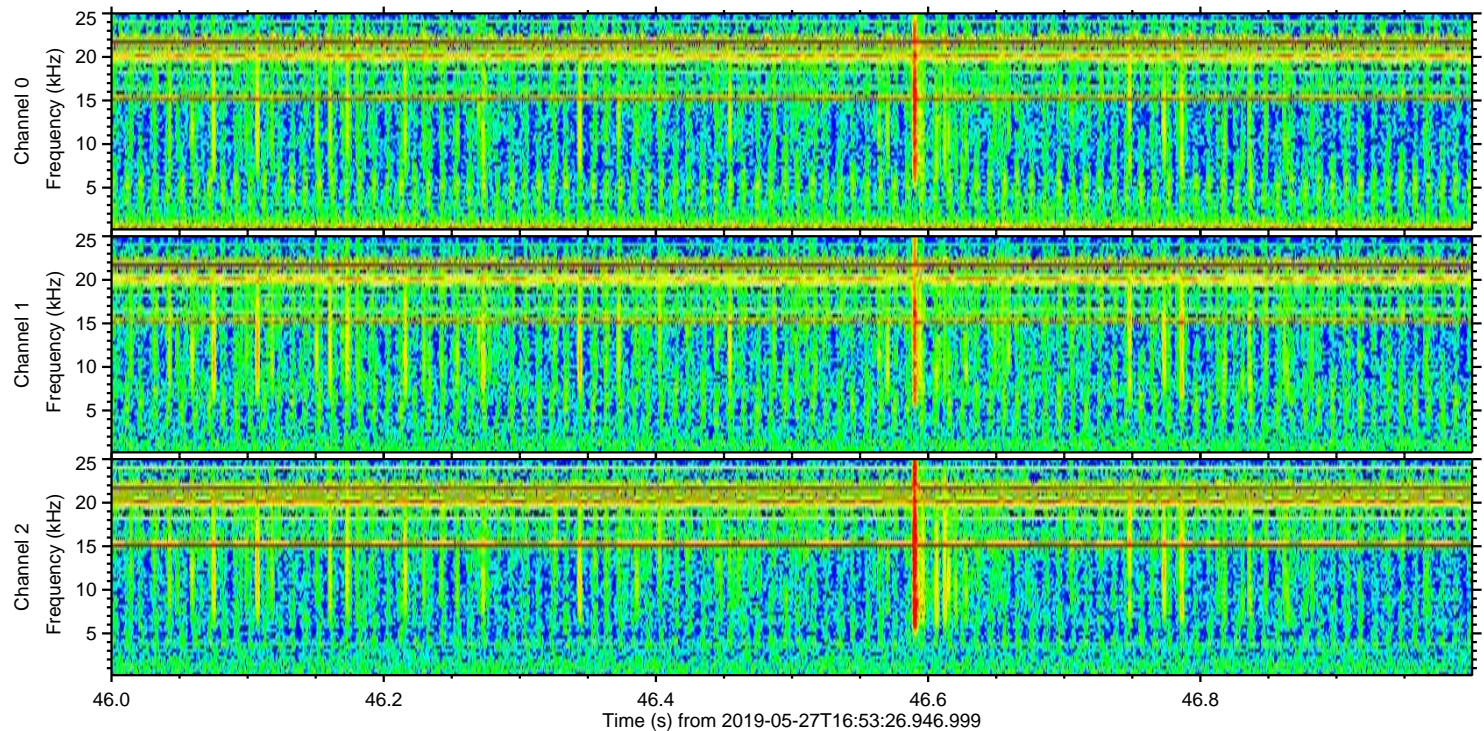
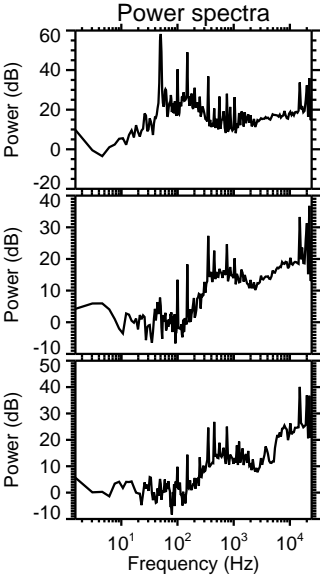
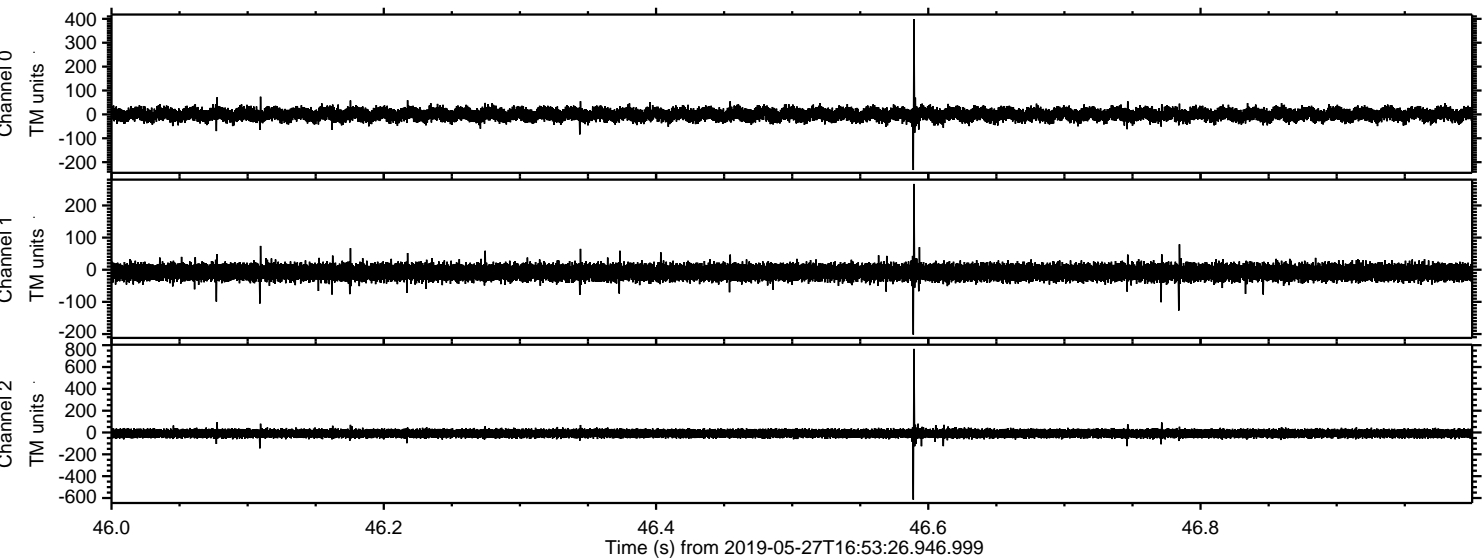


Processed Mon May 27 19:01:10 2019 by ELM ver.2012-10-06 from 001\_\_elm20190527\_165325\_\_dat00.bin



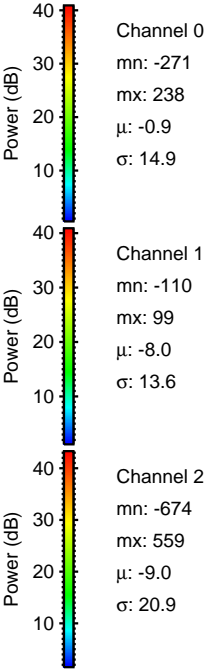
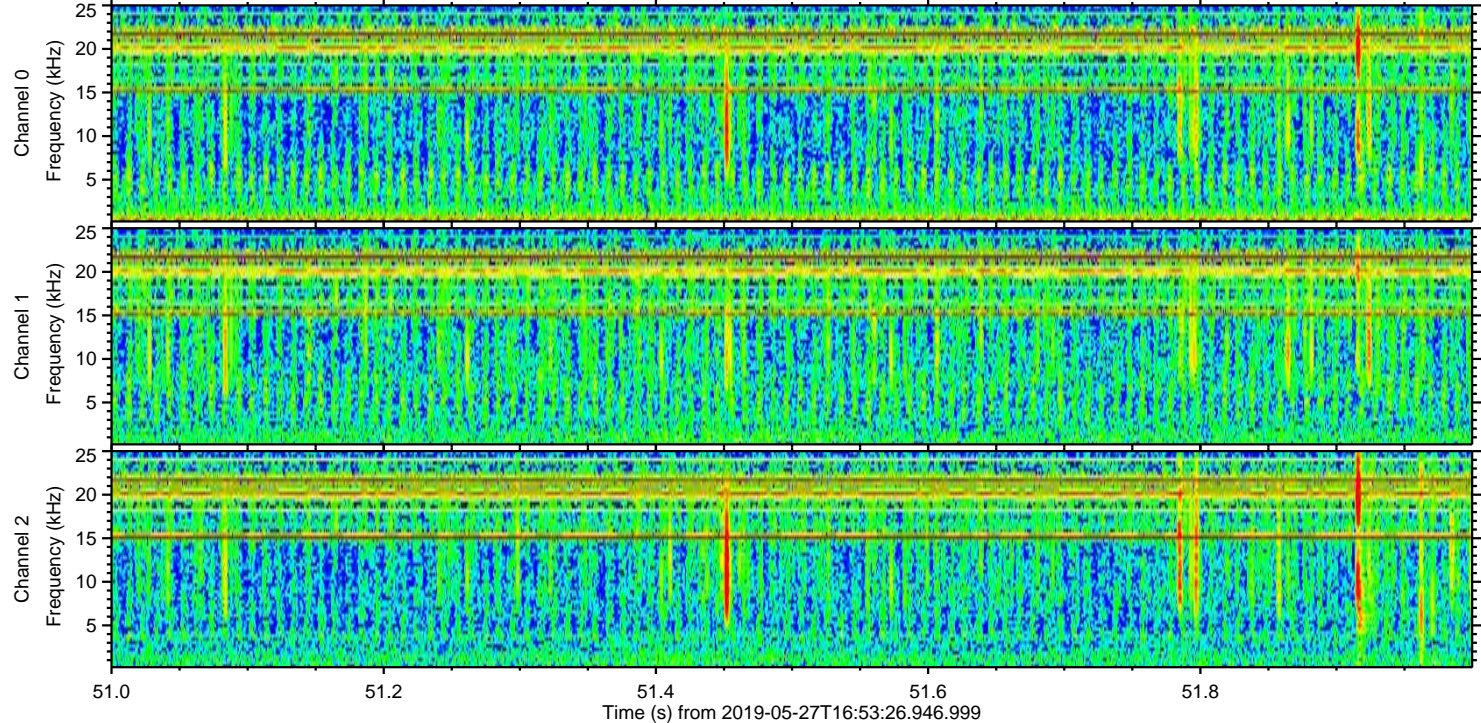
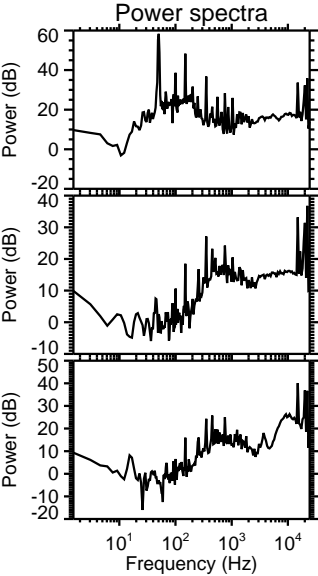
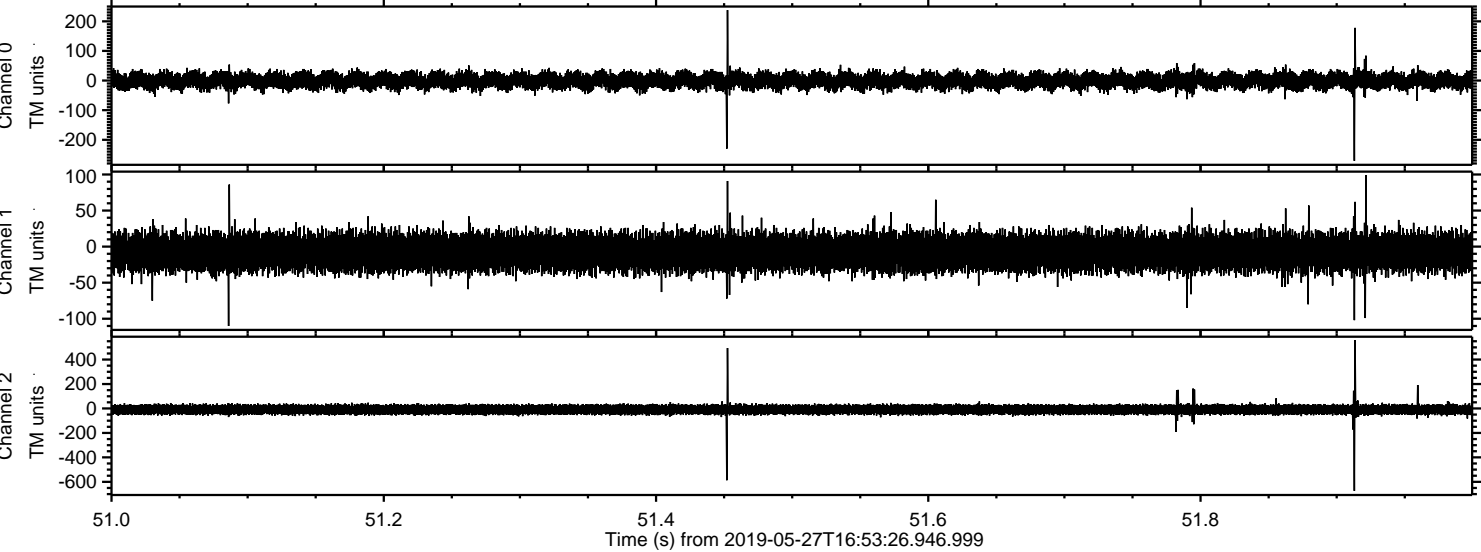


Processed Mon May 27 19:01:11 2019 by ELM ver.2012-10-06 from 001\_\_elm20190527\_165325\_\_dat00.bin



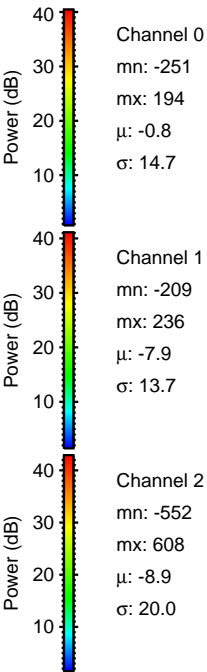
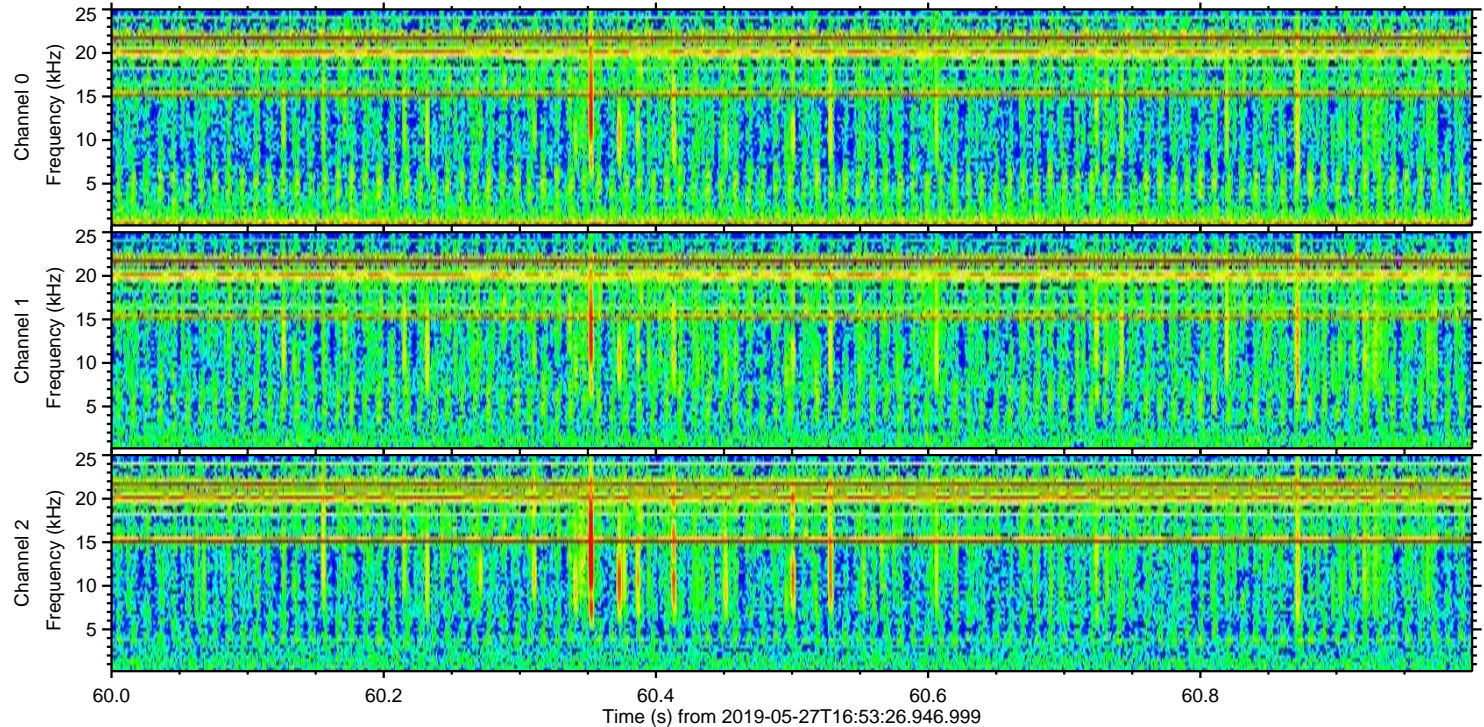
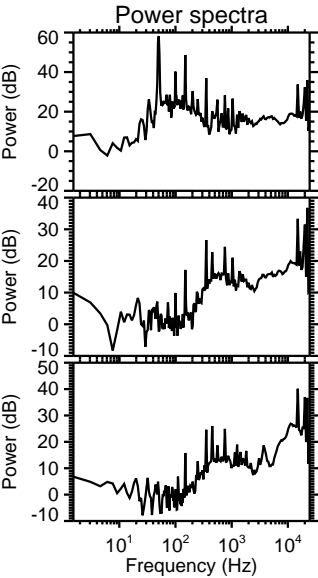
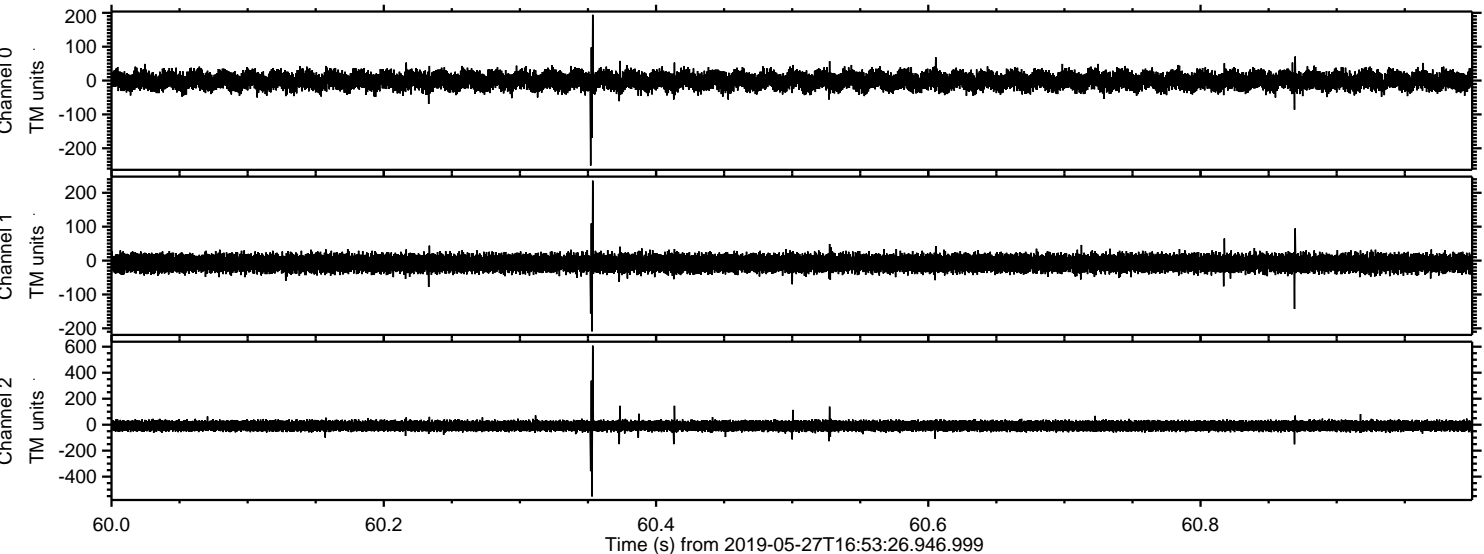


Processed Mon May 27 19:01:12 2019 by ELM ver.2012-10-06 from 001\_\_elm20190527\_165325\_\_dat00.bin



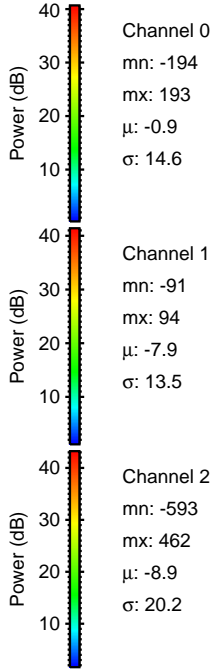
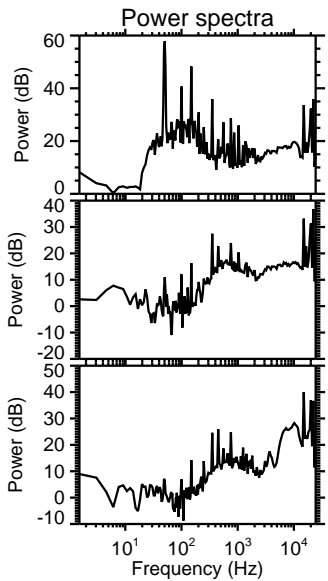
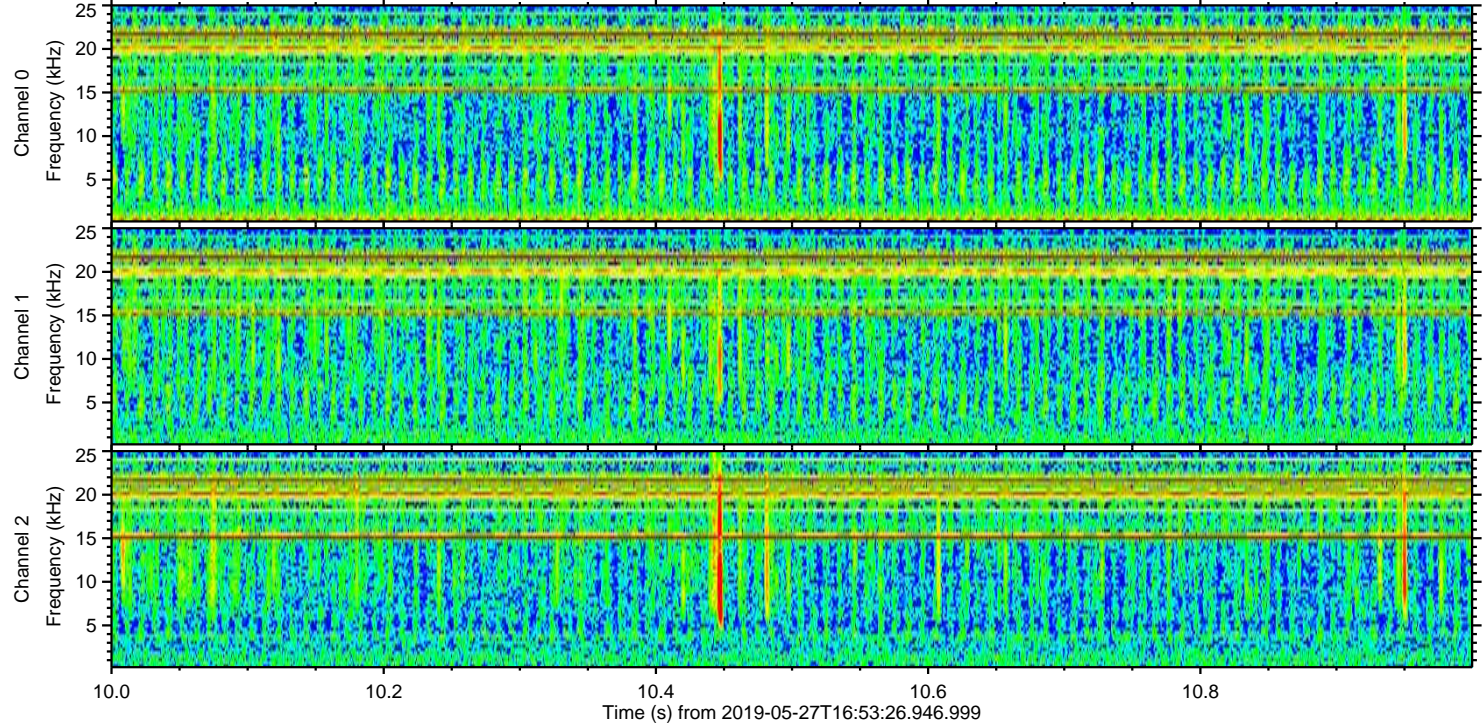
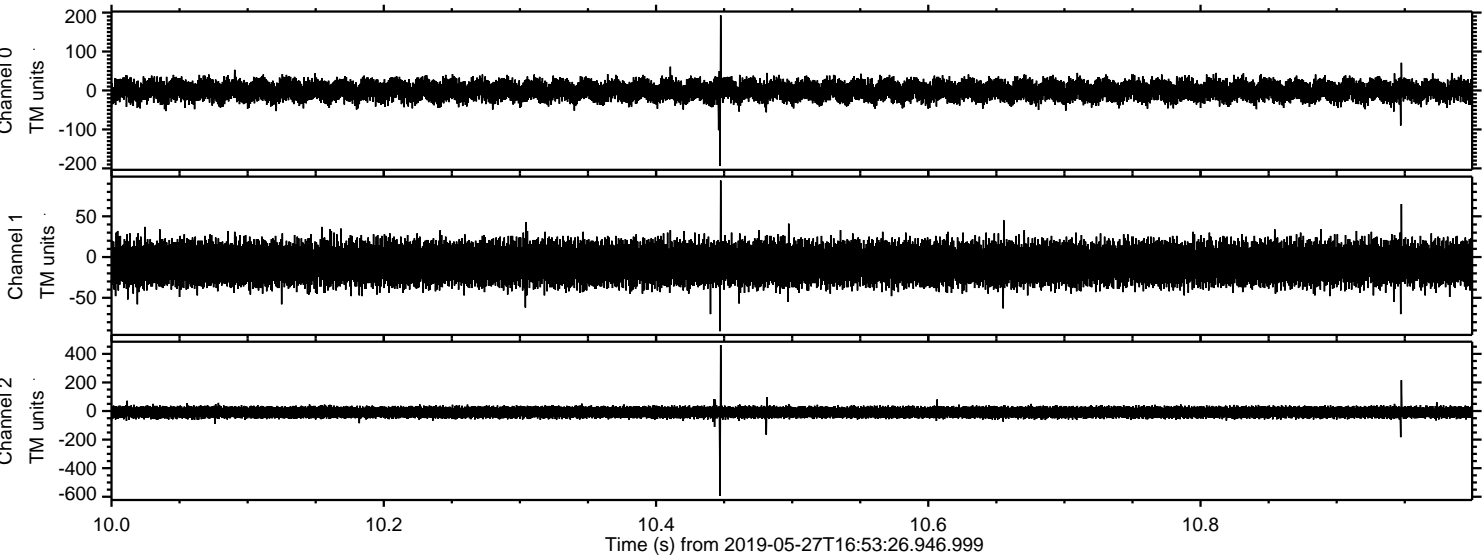


Processed Mon May 27 19:01:12 2019 by ELM ver.2012-10-06 from 001\_\_elm20190527\_165325\_\_dat00.bin





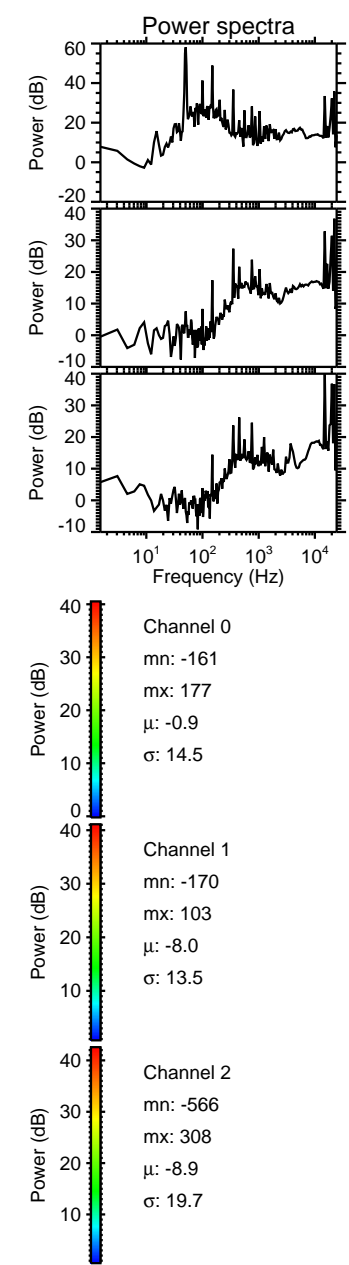
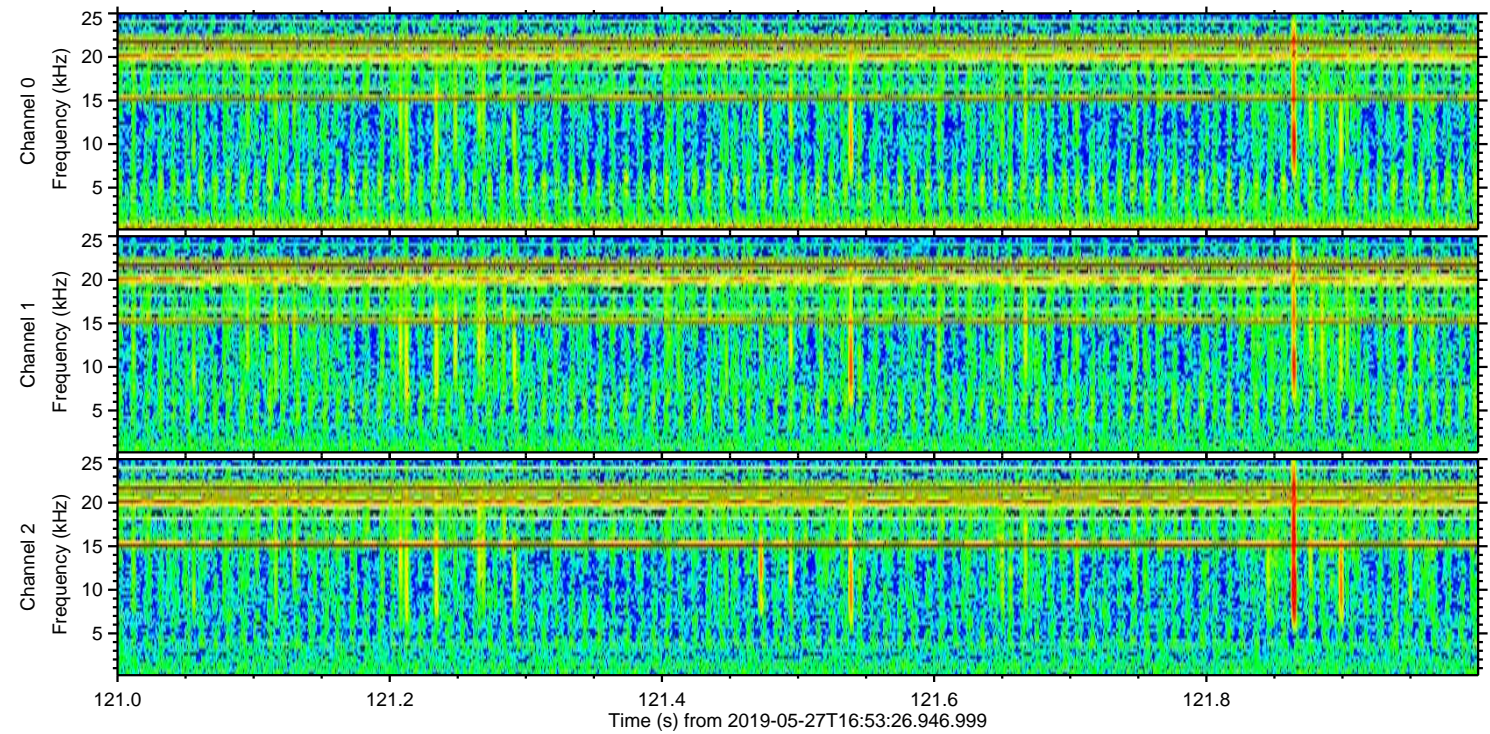
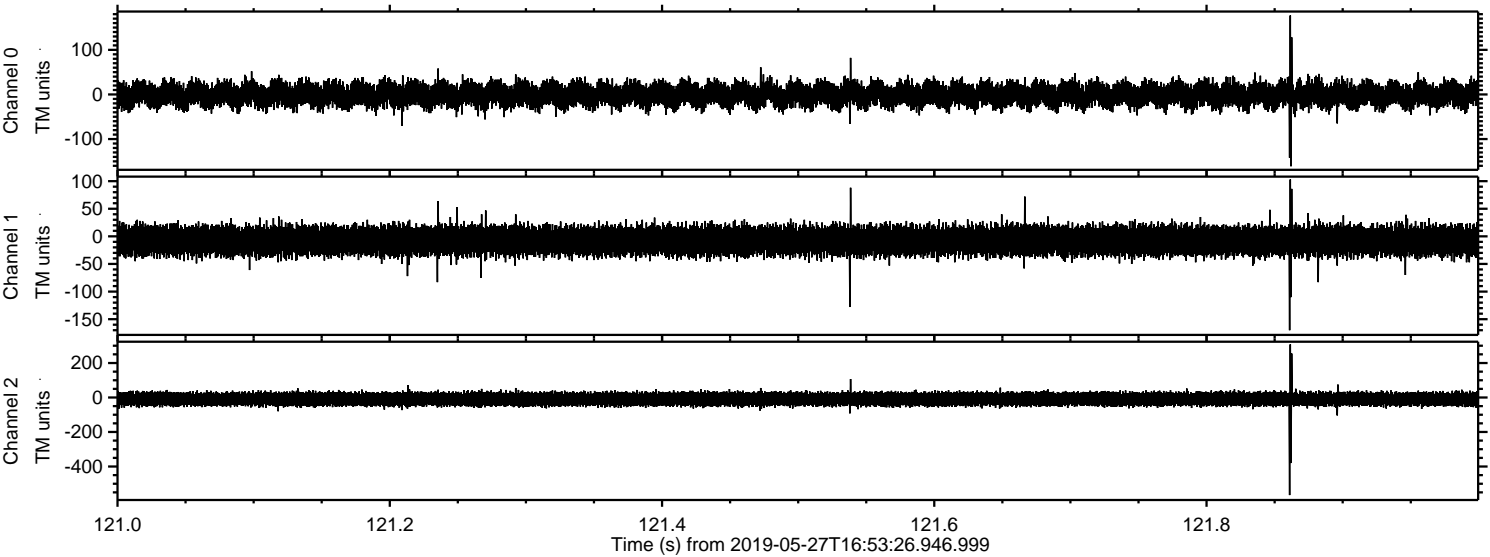
Processed Mon May 27 19:01:13 2019 by ELM ver.2012-10-06 from 001\_\_elm20190527\_165325\_\_dat00.bin





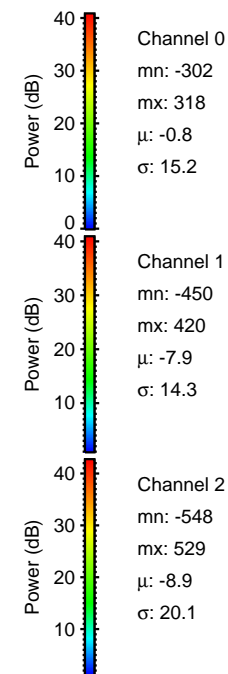
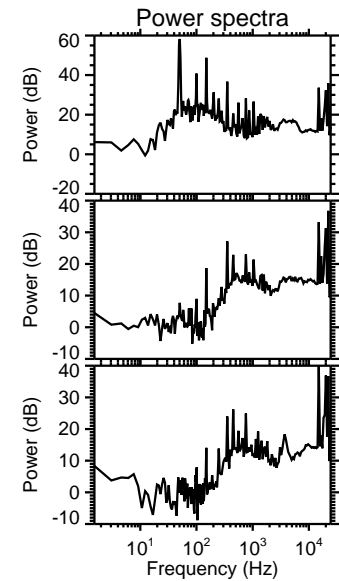
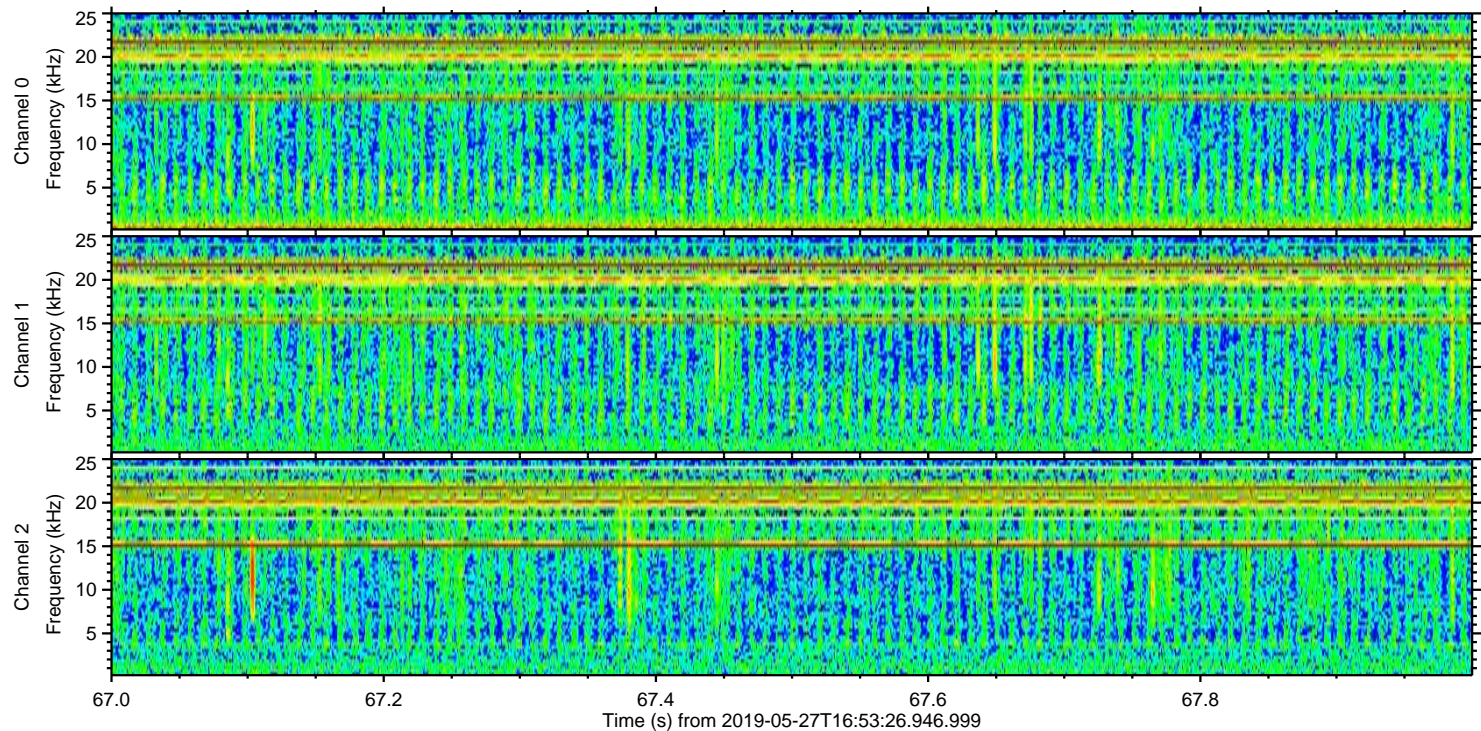
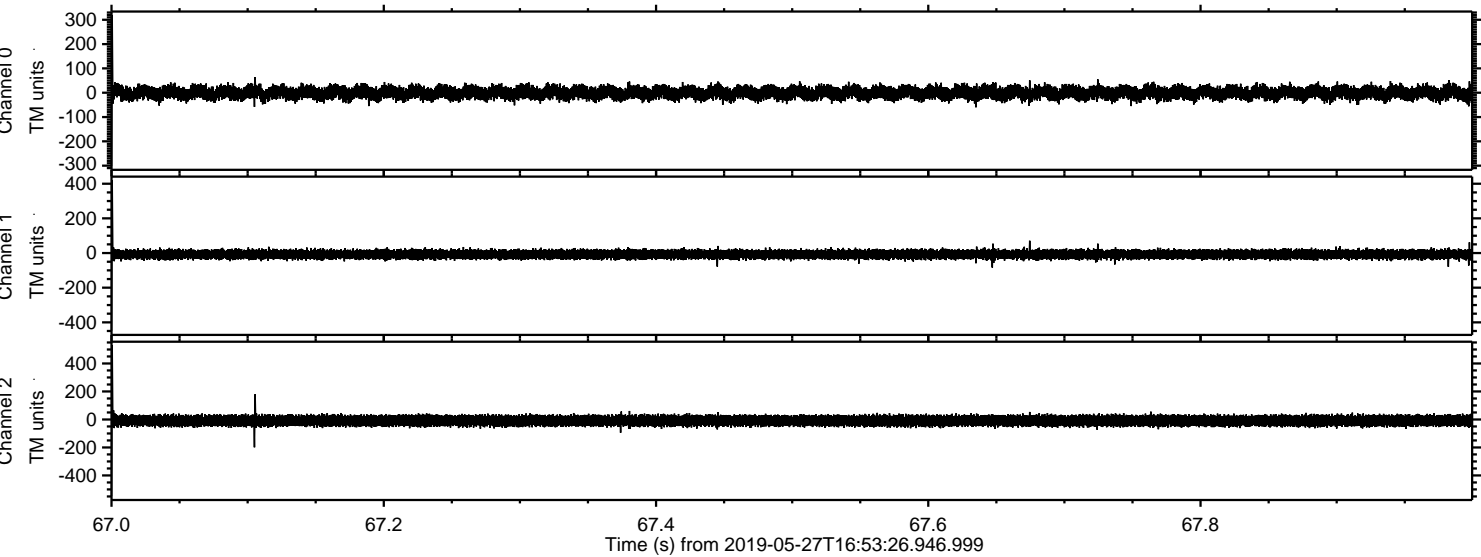
ELMAVAN 3D WAVEFORMS (Measured data sampled at 50 kHz) 51000 packets of 144 samples from 2019-05-27T16:53:26.946.999. Part 122/147

Processed Mon May 27 19:01:14 2019 by ELM ver.2012-10-06 from 001\_\_elm20190527\_165325\_\_dat00.bin



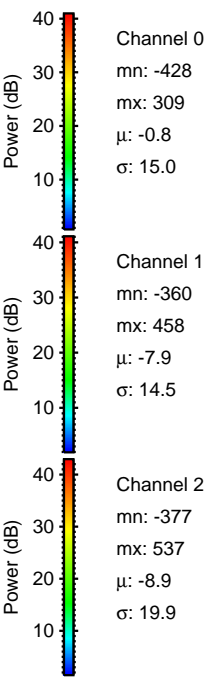
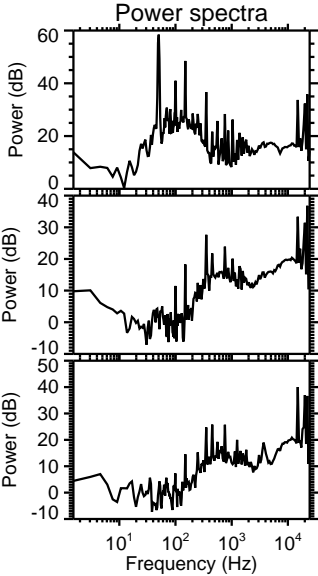
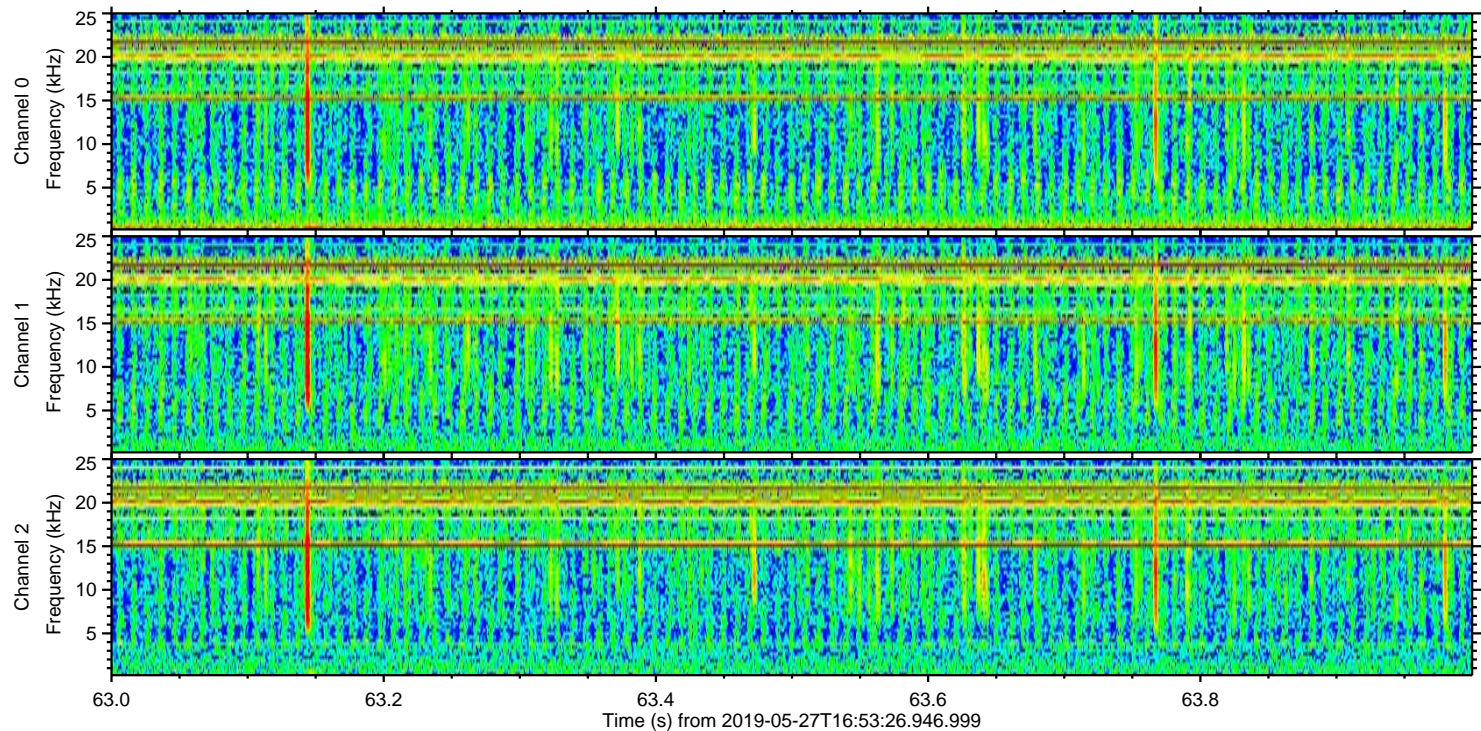
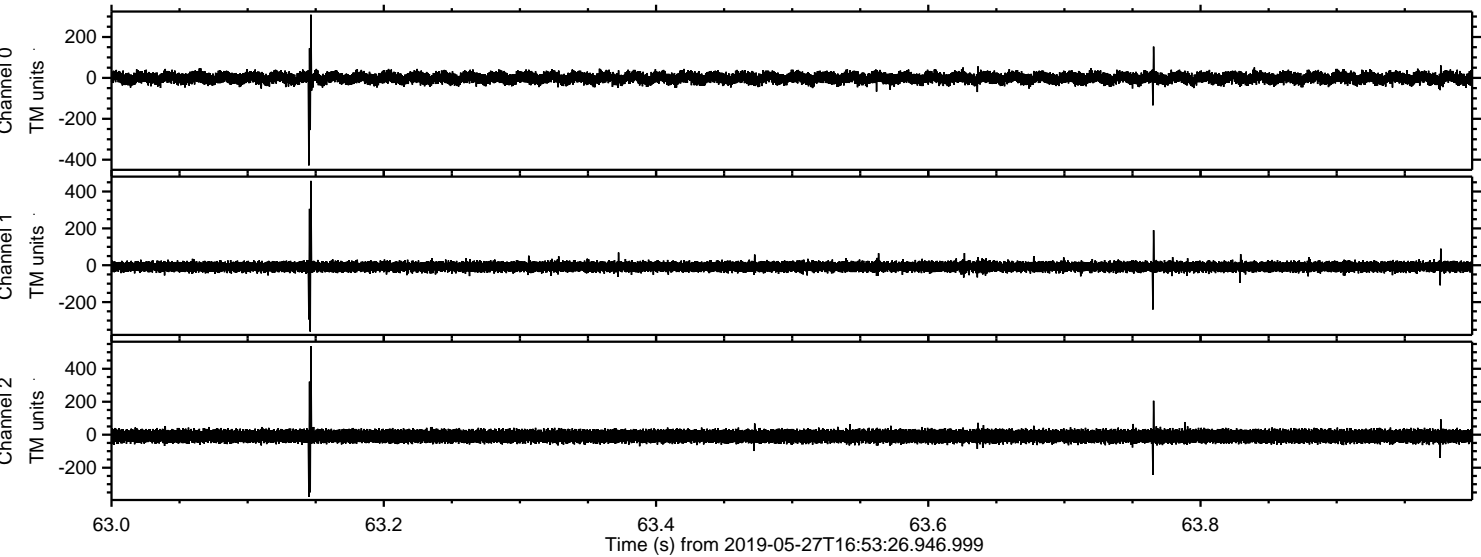


Processed Mon May 27 19:01:14 2019 by ELM ver.2012-10-06 from 001\_\_elm20190527\_165325\_\_dat00.bin





Processed Mon May 27 19:01:15 2019 by ELM ver.2012-10-06 from 001\_\_elm20190527\_165325\_\_dat00.bin



Channel 0  
mn: -428  
mx: 309  
 $\mu$ : -0.8  
 $\sigma$ : 15.0

Channel 1  
mn: -360  
mx: 458  
 $\mu$ : -7.9  
 $\sigma$ : 14.5

Channel 2  
mn: -377  
mx: 537  
 $\mu$ : -8.9  
 $\sigma$ : 19.9



