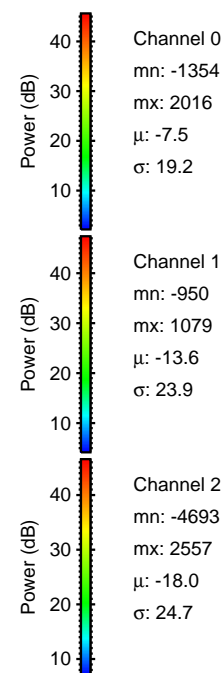
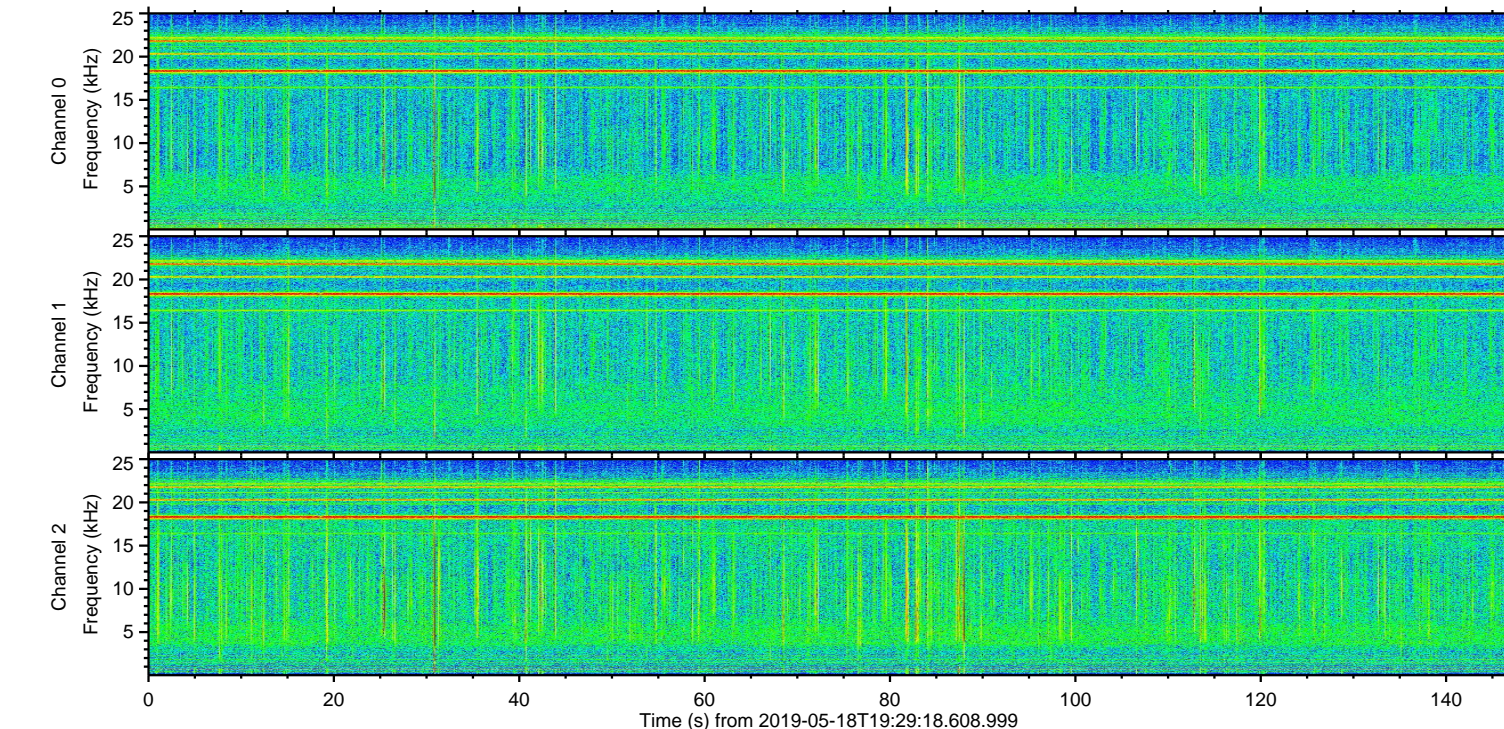
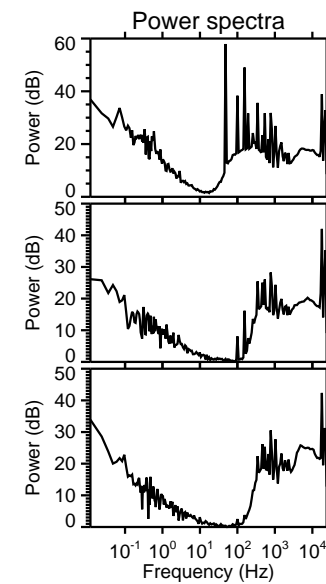
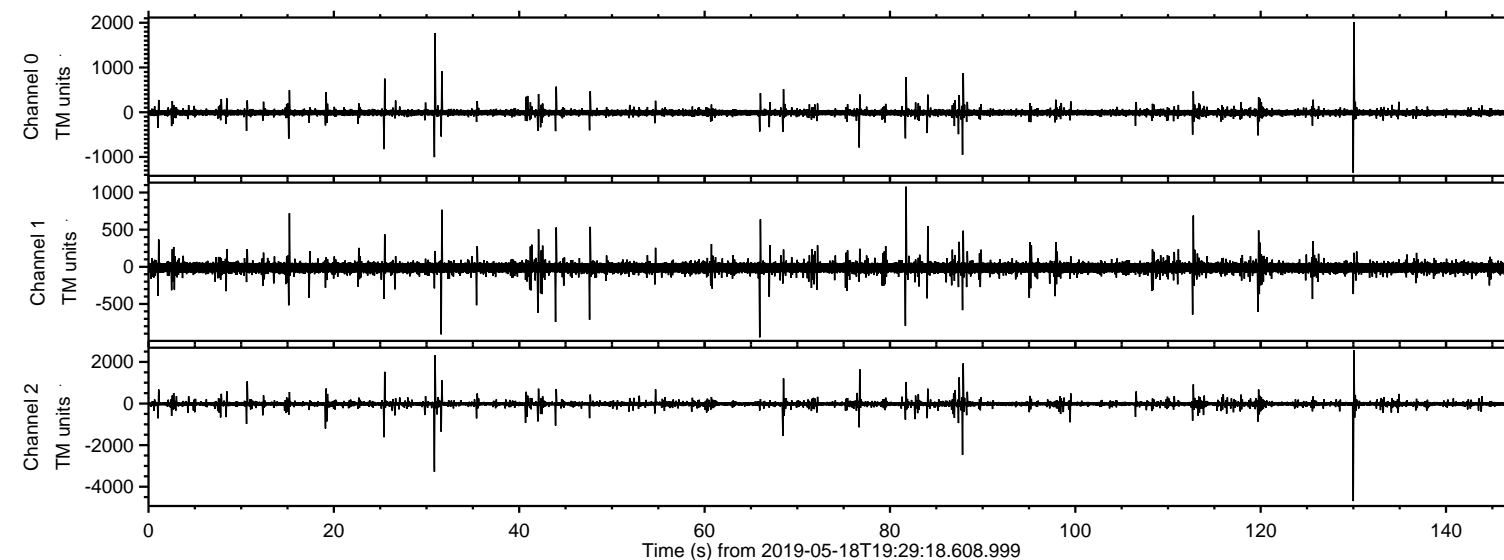


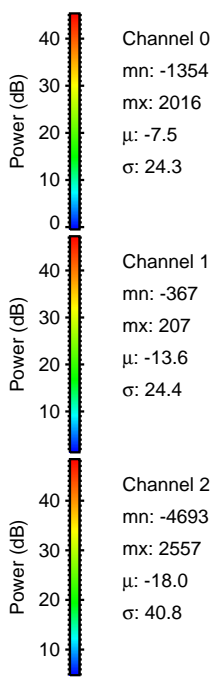
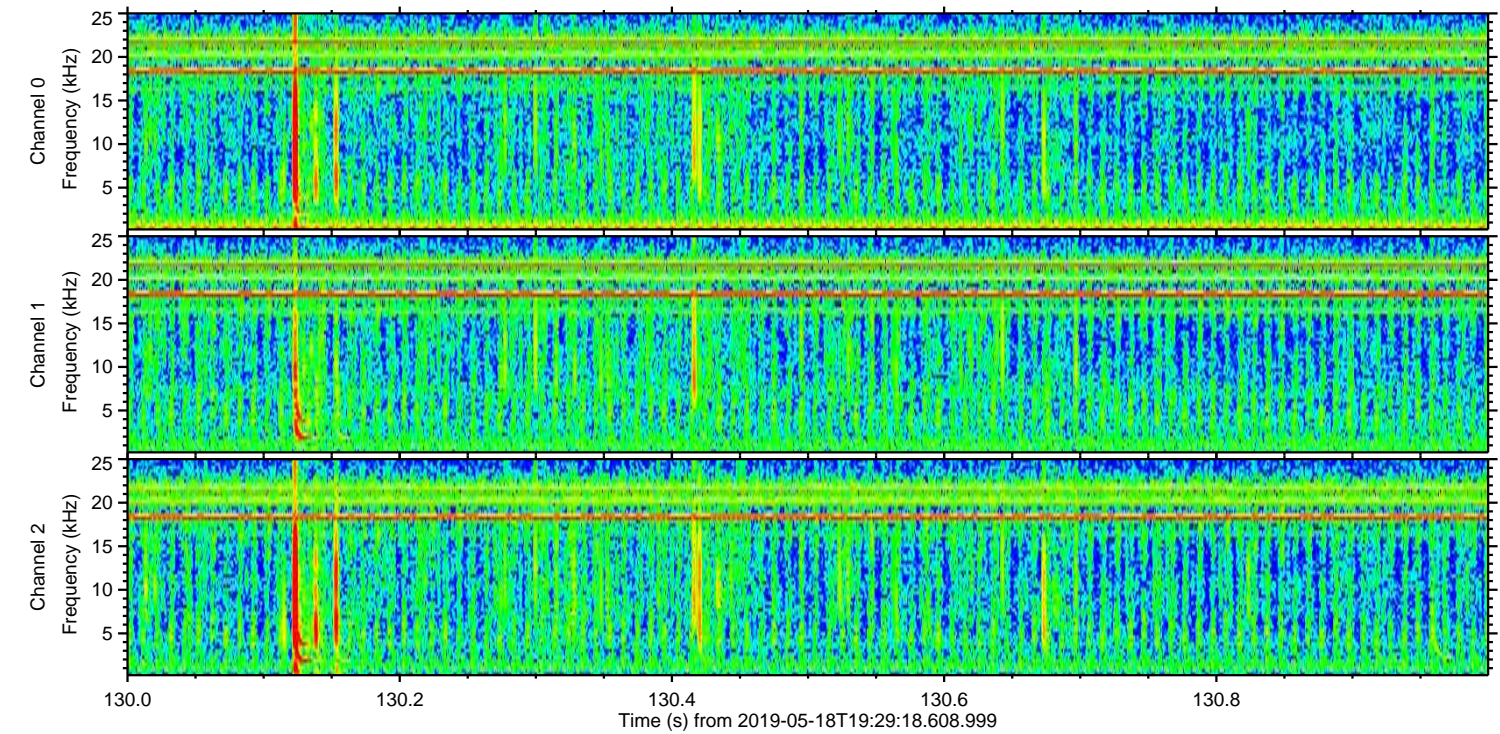
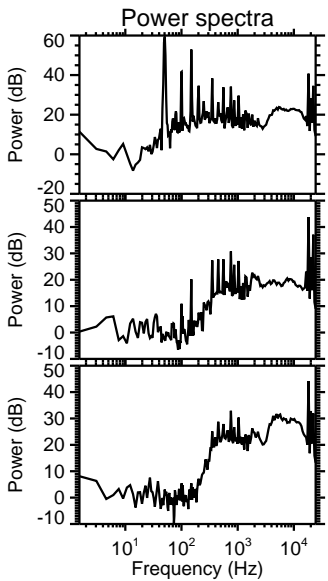
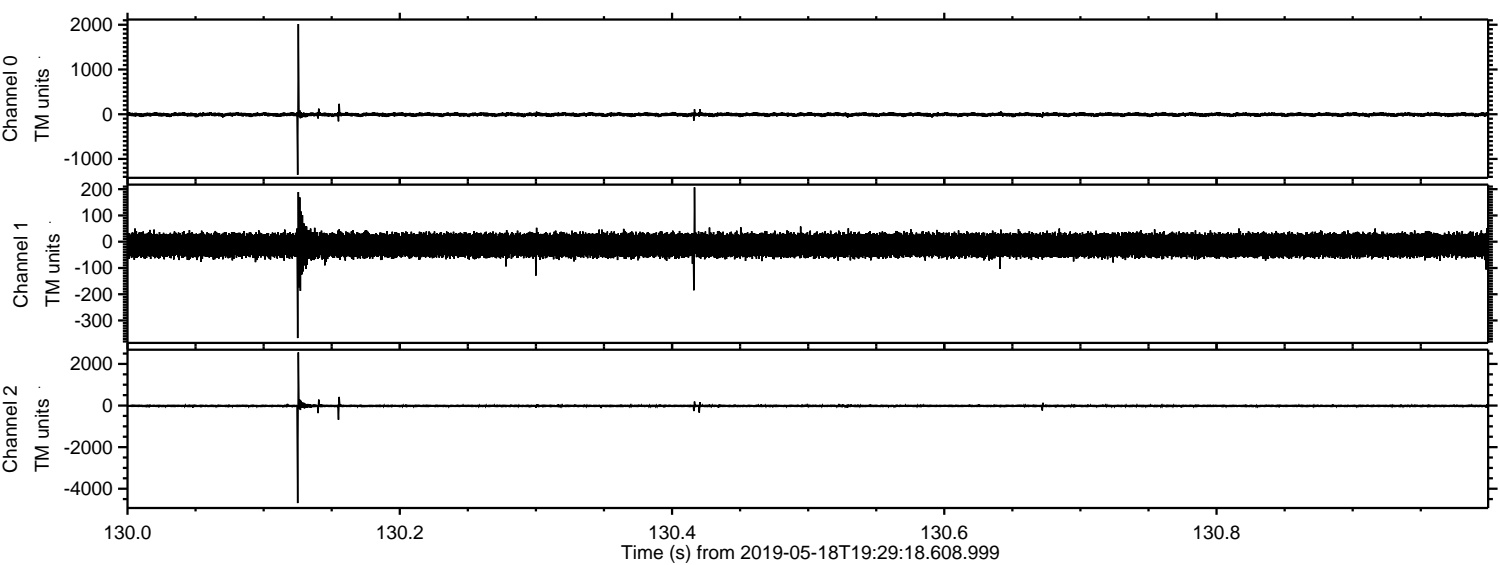
ELMAVAN 3D WAVEFORMS (Measured data sampled at 50 kHz) 51000 packets of 144 samples from 2019-05-18T19:29:18.608.999.

Processed Sat May 18 21:36:46 2019 by ELM ver.2012-10-06 from 001__elm20190518_192917__dat00.bin



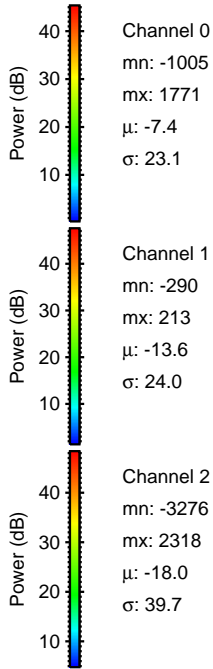
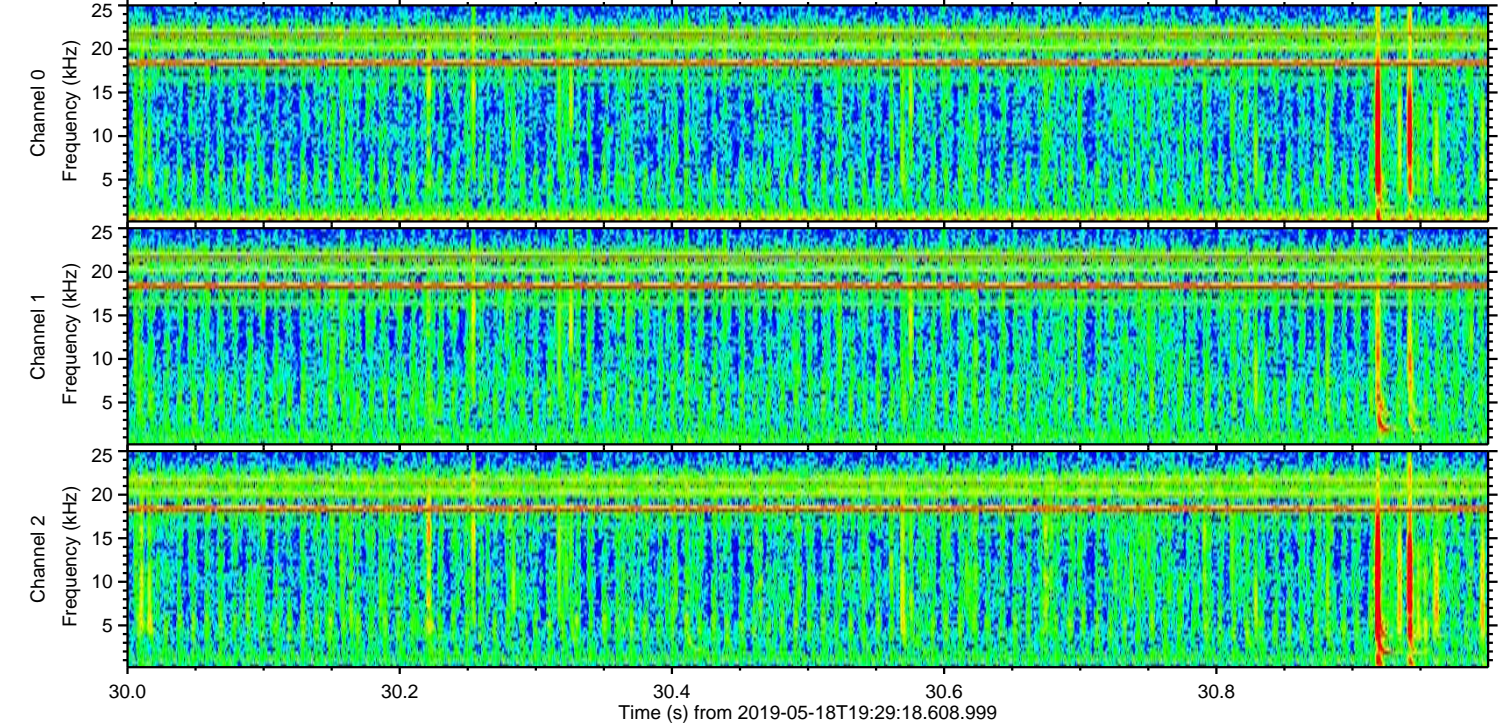
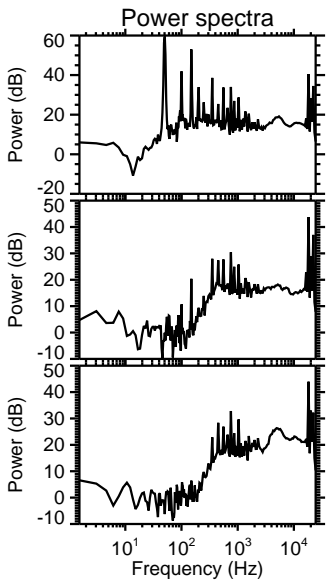
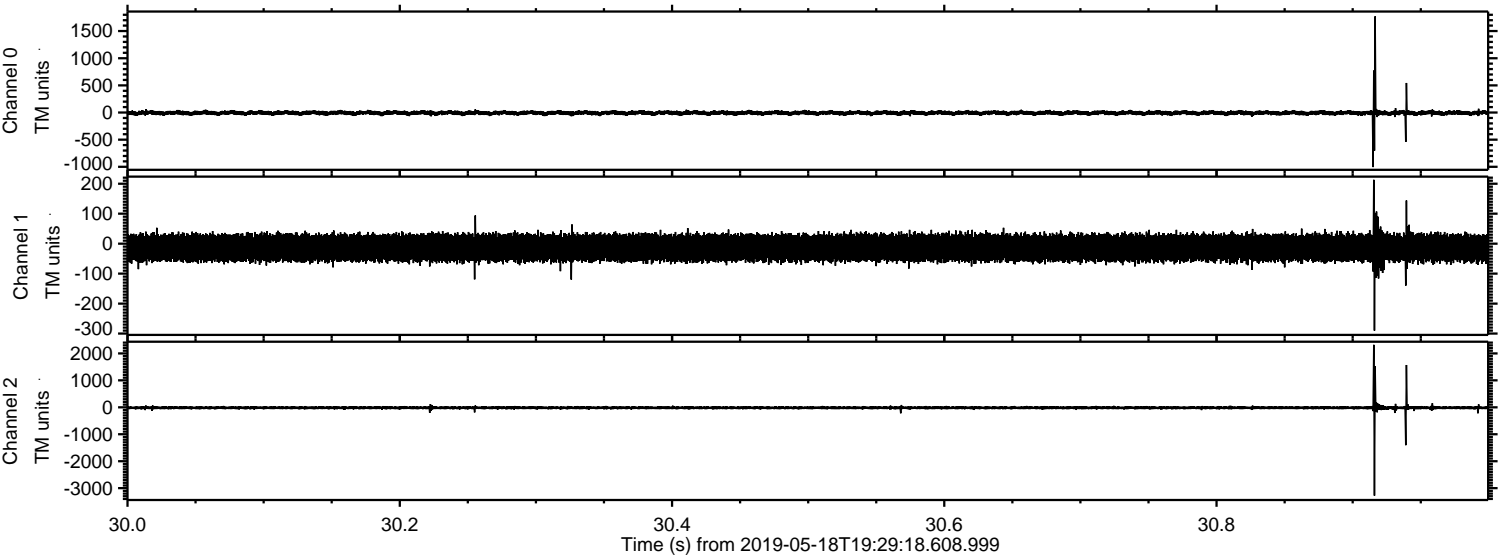
ELMAVAN 3D WAVEFORMS (Measured data sampled at 50 kHz) 51000 packets of 144 samples from 2019-05-18T19:29:18.608.999. Part 131/147

Processed Sat May 18 21:36:51 2019 by ELM ver.2012-10-06 from 001__elm20190518_192917__dat00.bin

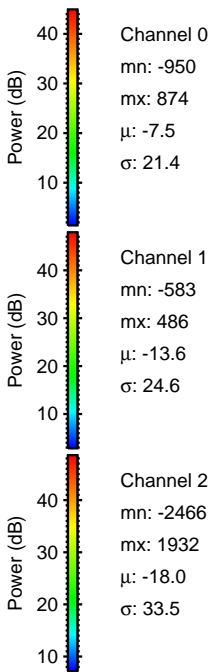
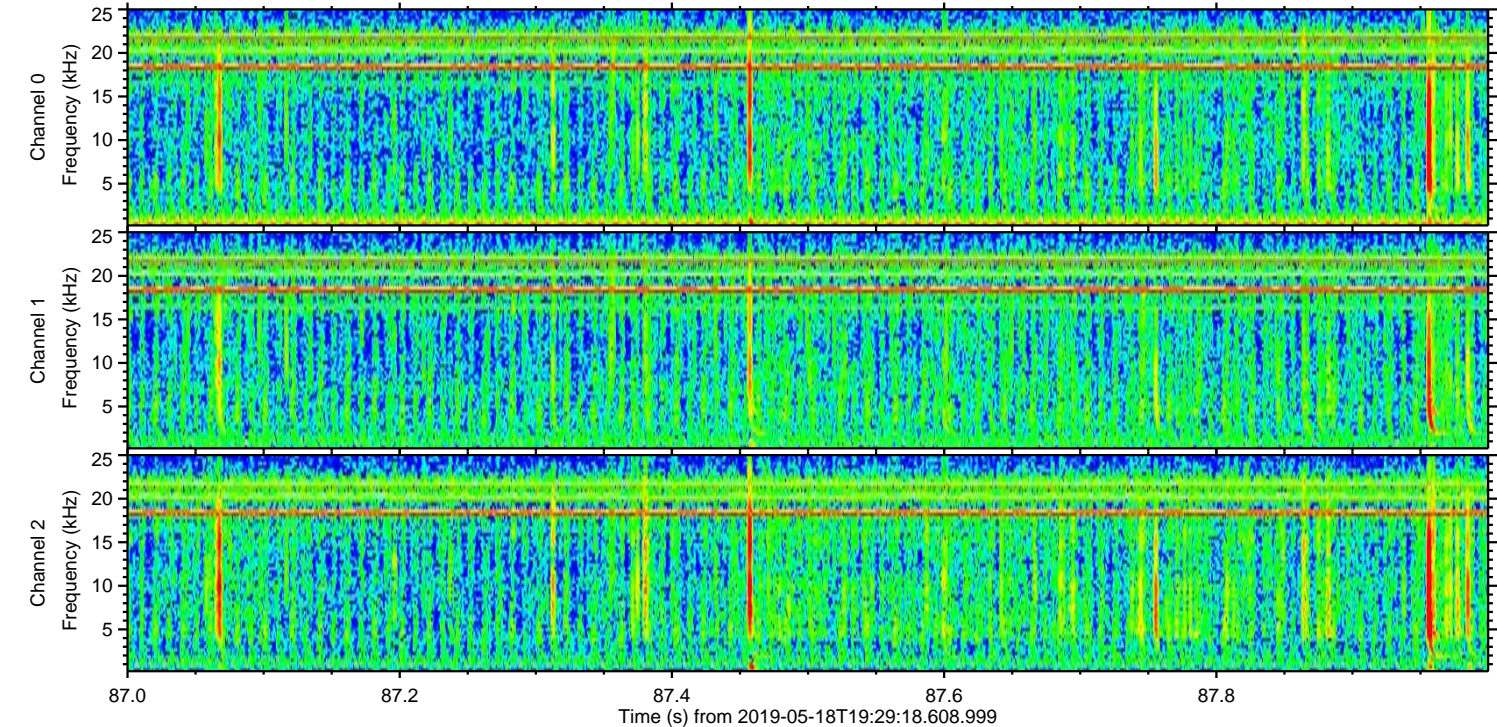
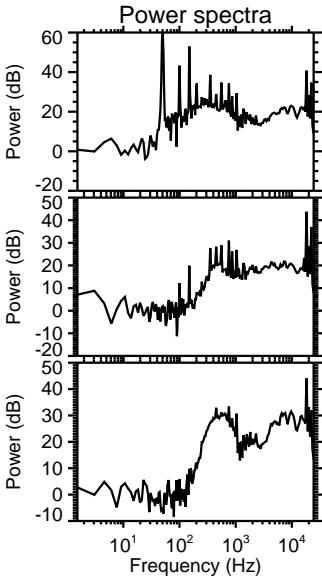
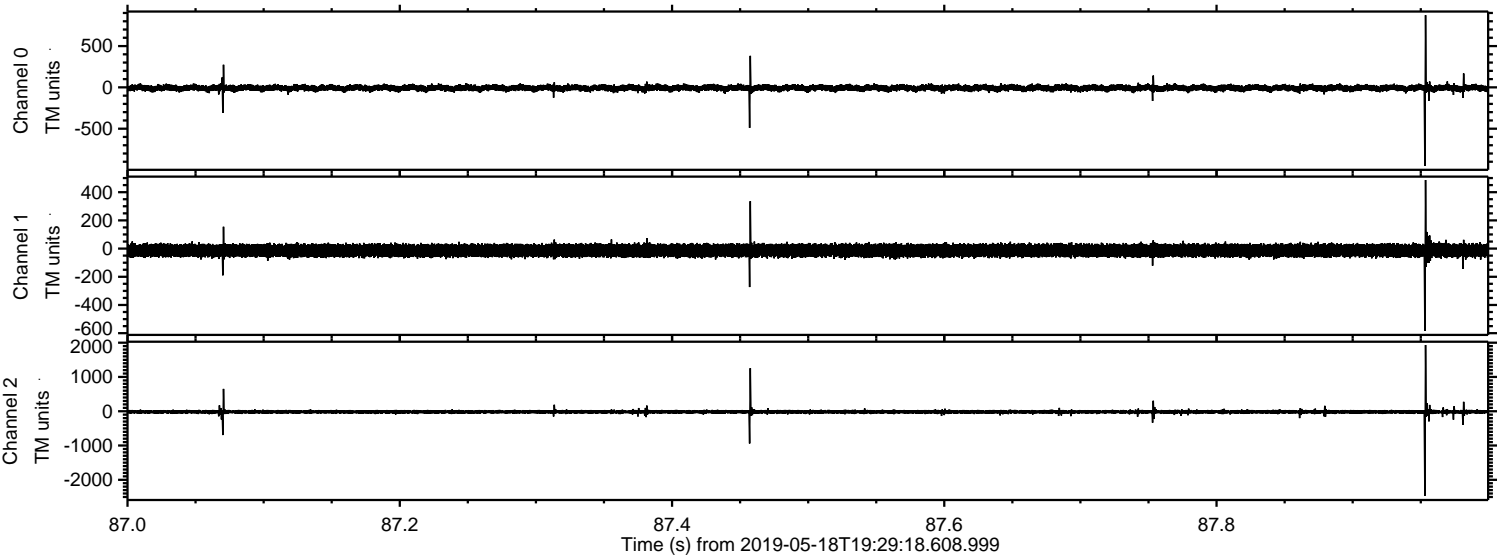


ELMAVAN 3D WAVEFORMS (Measured data sampled at 50 kHz) 51000 packets of 144 samples from 2019-05-18T19:29:18.608.999. Part 31/147

Processed Sat May 18 21:36:52 2019 by ELM ver.2012-10-06 from 001__elm20190518_192917__dat00.bin

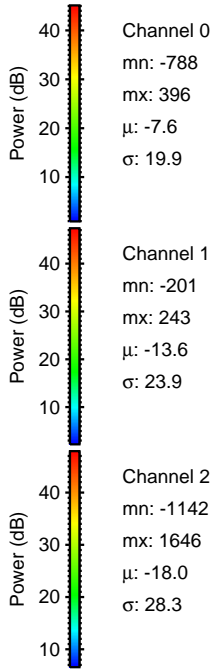
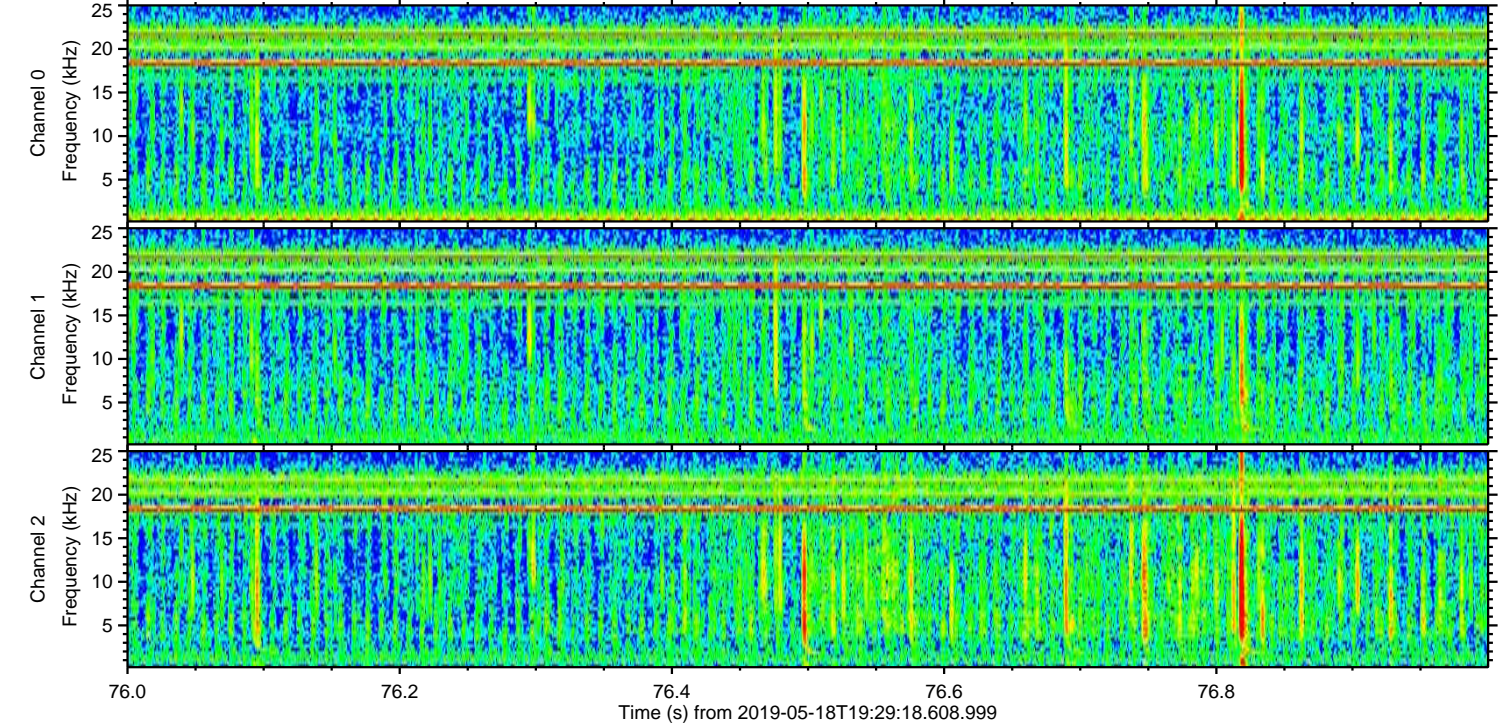
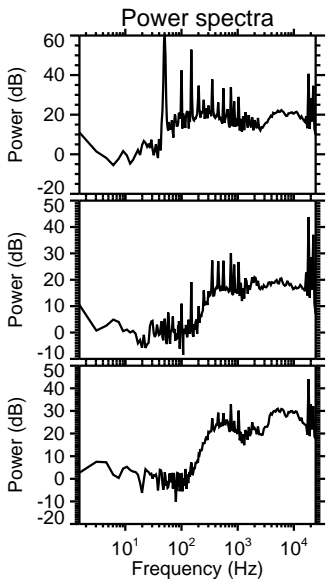
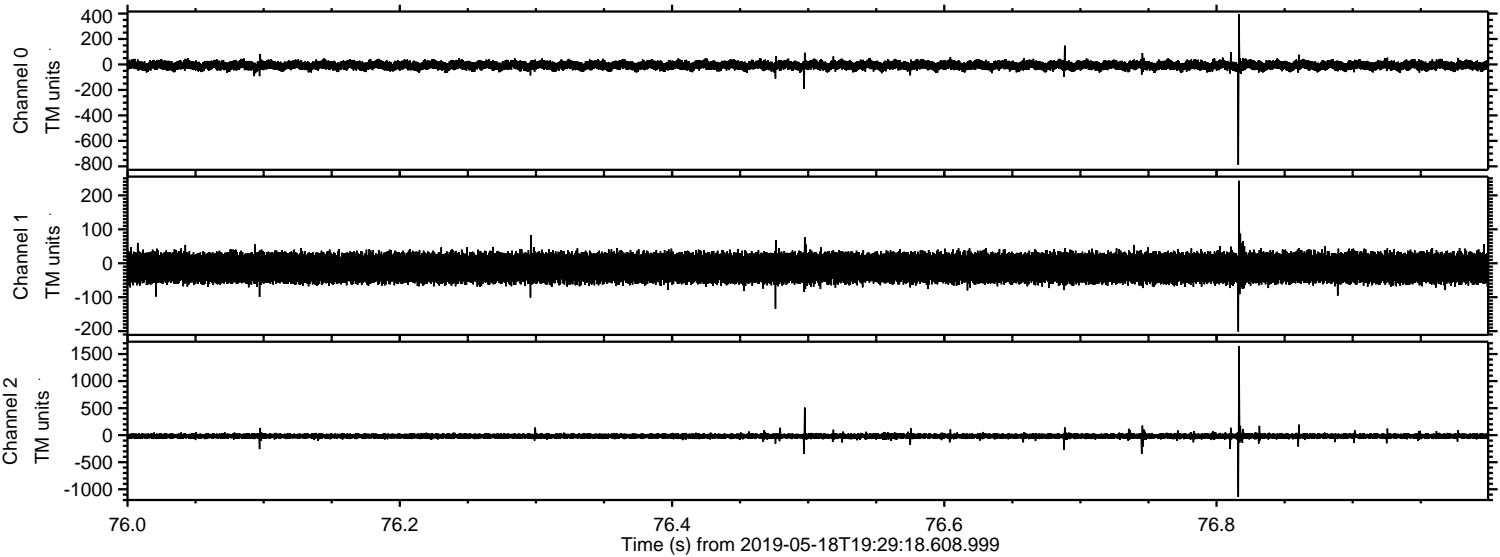


Processed Sat May 18 21:36:53 2019 by ELM ver.2012-10-06 from 001__elm20190518_192917__dat00.bin



ELMAVAN 3D WAVEFORMS (Measured data sampled at 50 kHz) 51000 packets of 144 samples from 2019-05-18T19:29:18.608.999. Part 77/147

Processed Sat May 18 21:36:54 2019 by ELM ver.2012-10-06 from 001__elm20190518_192917__dat00.bin

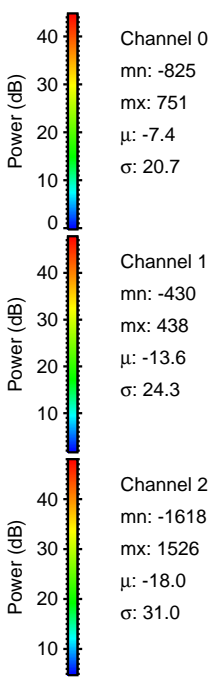
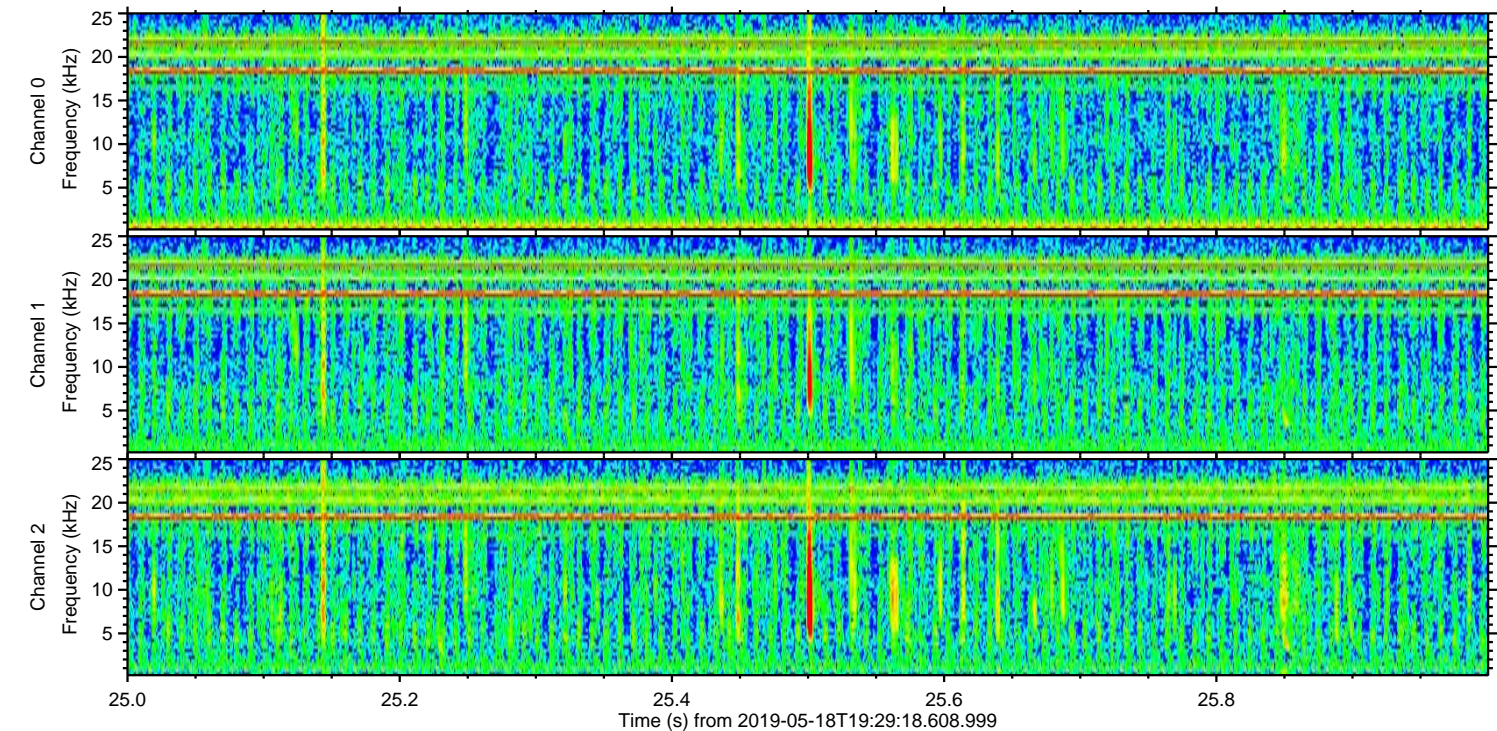
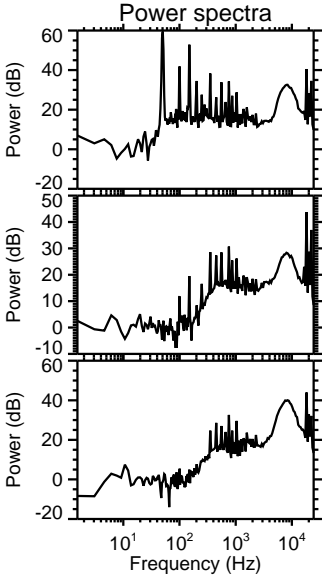
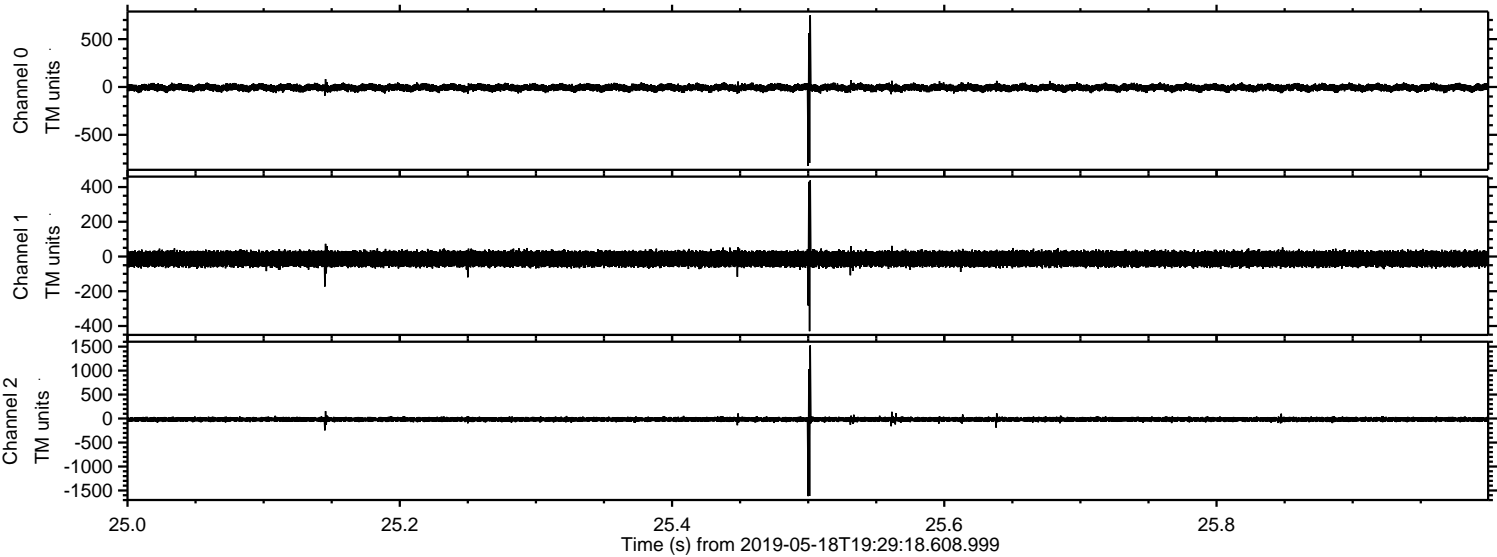


Channel 0
mn: -788
mx: 396
 μ : -7.6
 σ : 19.9

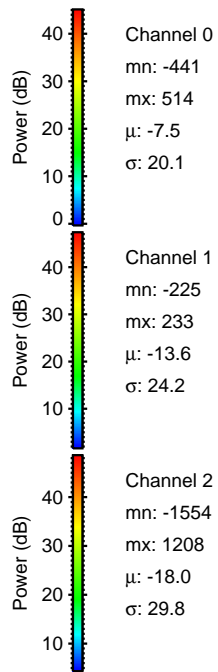
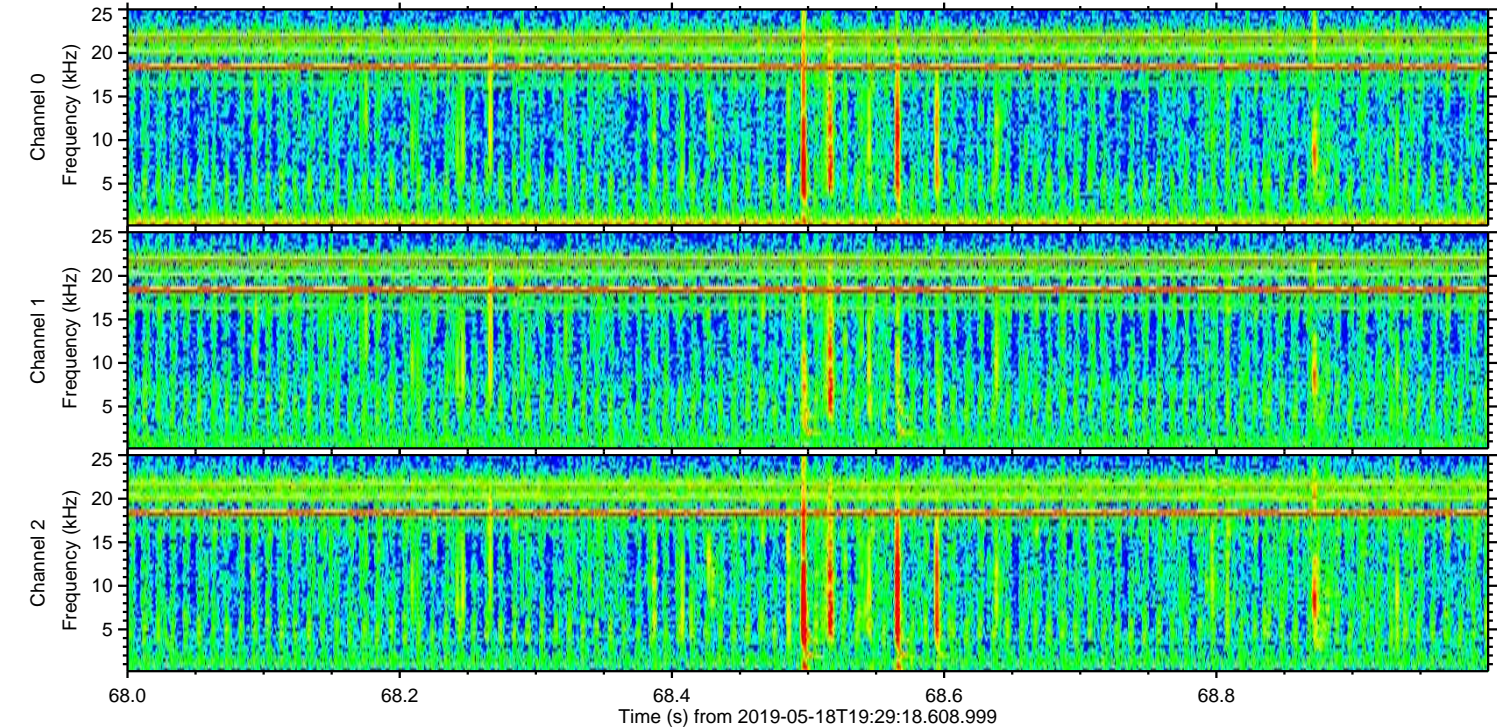
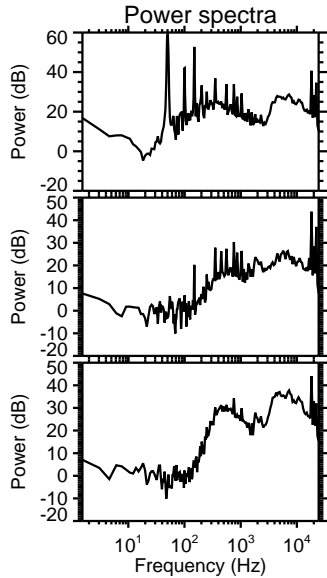
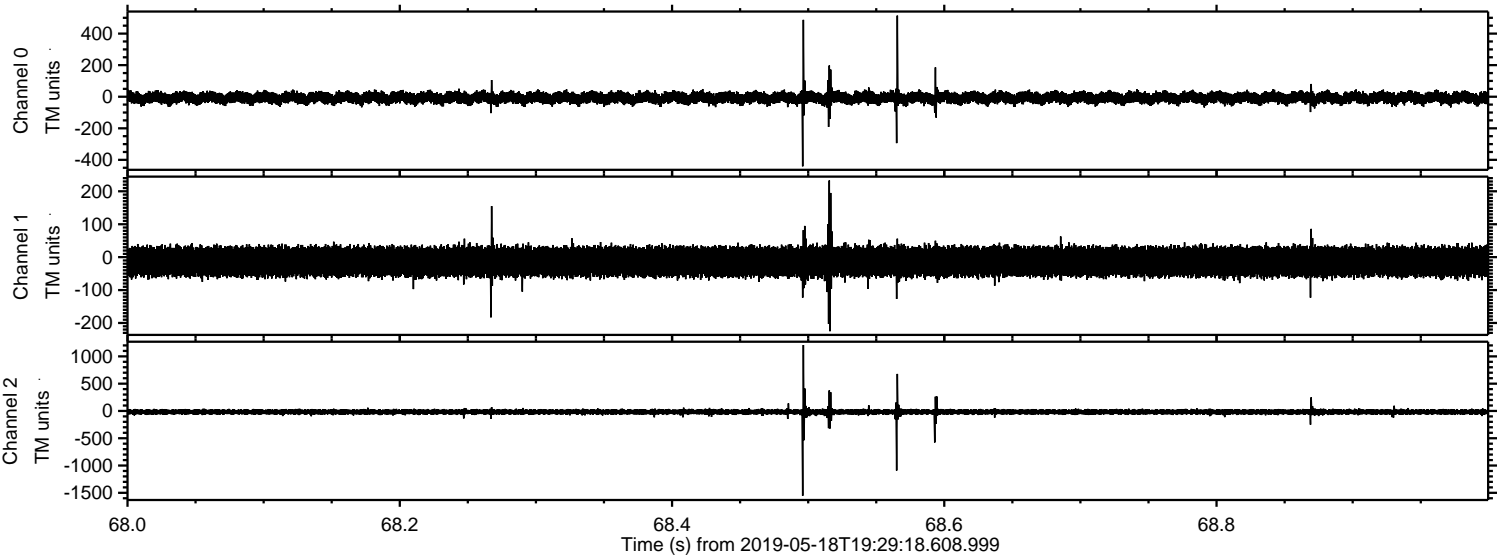
Channel 1
mn: -201
mx: 243
 μ : -13.6
 σ : 23.9

Channel 2
mn: -1142
mx: 1646
 μ : -18.0
 σ : 28.3

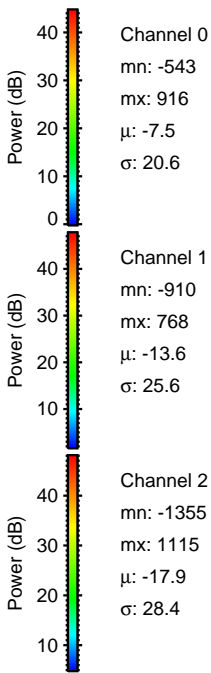
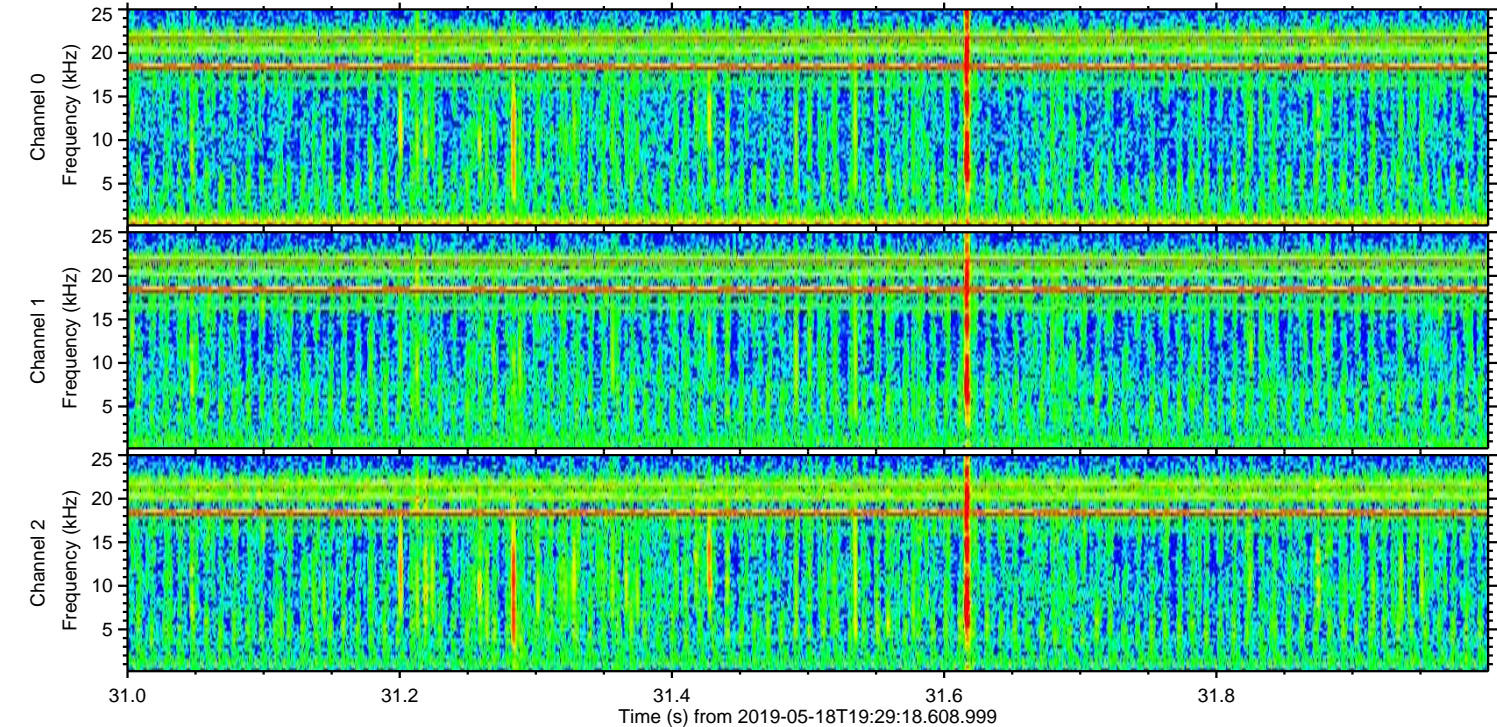
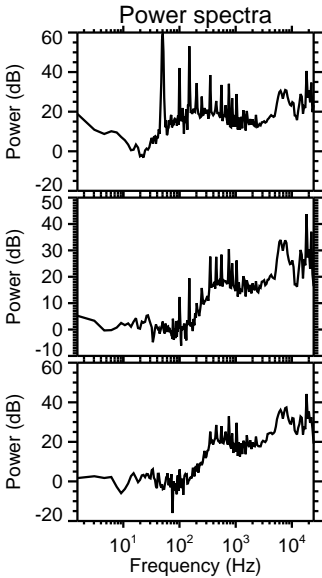
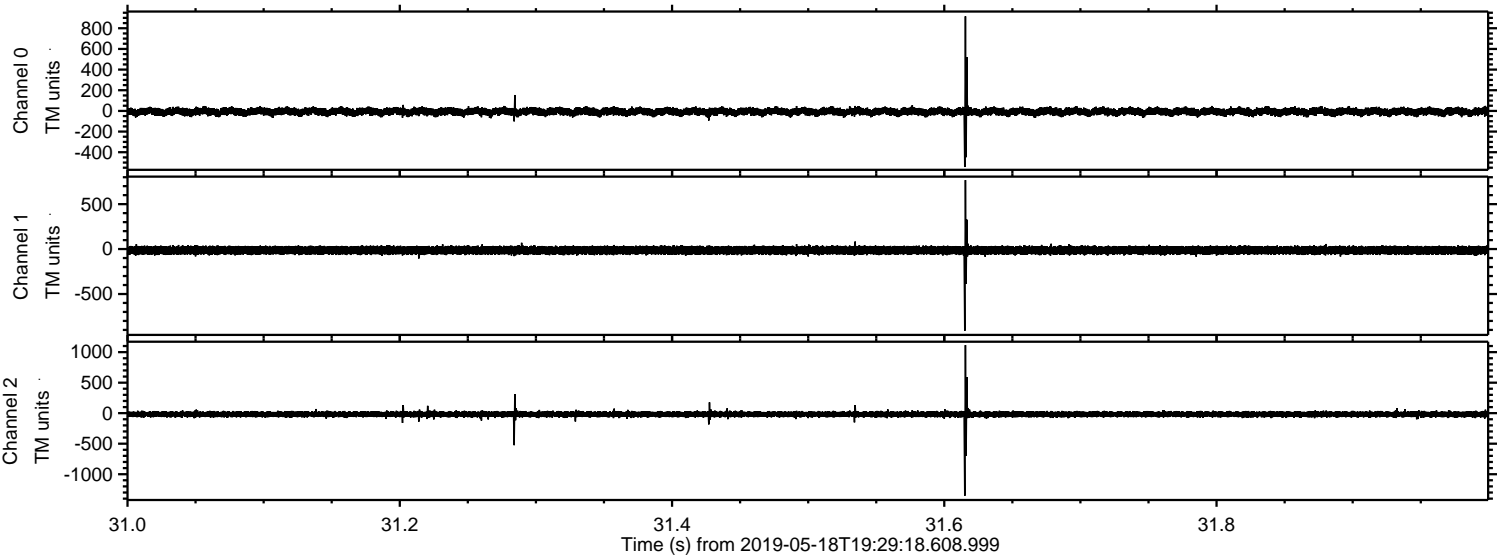
Processed Sat May 18 21:36:54 2019 by ELM ver.2012-10-06 from 001__elm20190518_192917__dat00.bin



Processed Sat May 18 21:36:55 2019 by ELM ver.2012-10-06 from 001__elm20190518_192917__dat00.bin



Processed Sat May 18 21:36:55 2019 by ELM ver.2012-10-06 from 001__elm20190518_192917__dat00.bin

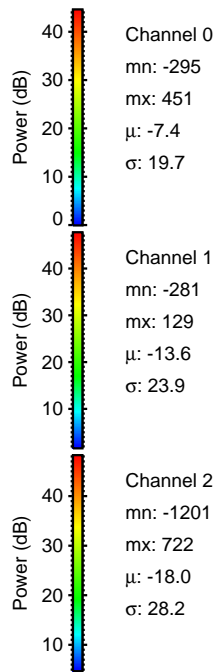
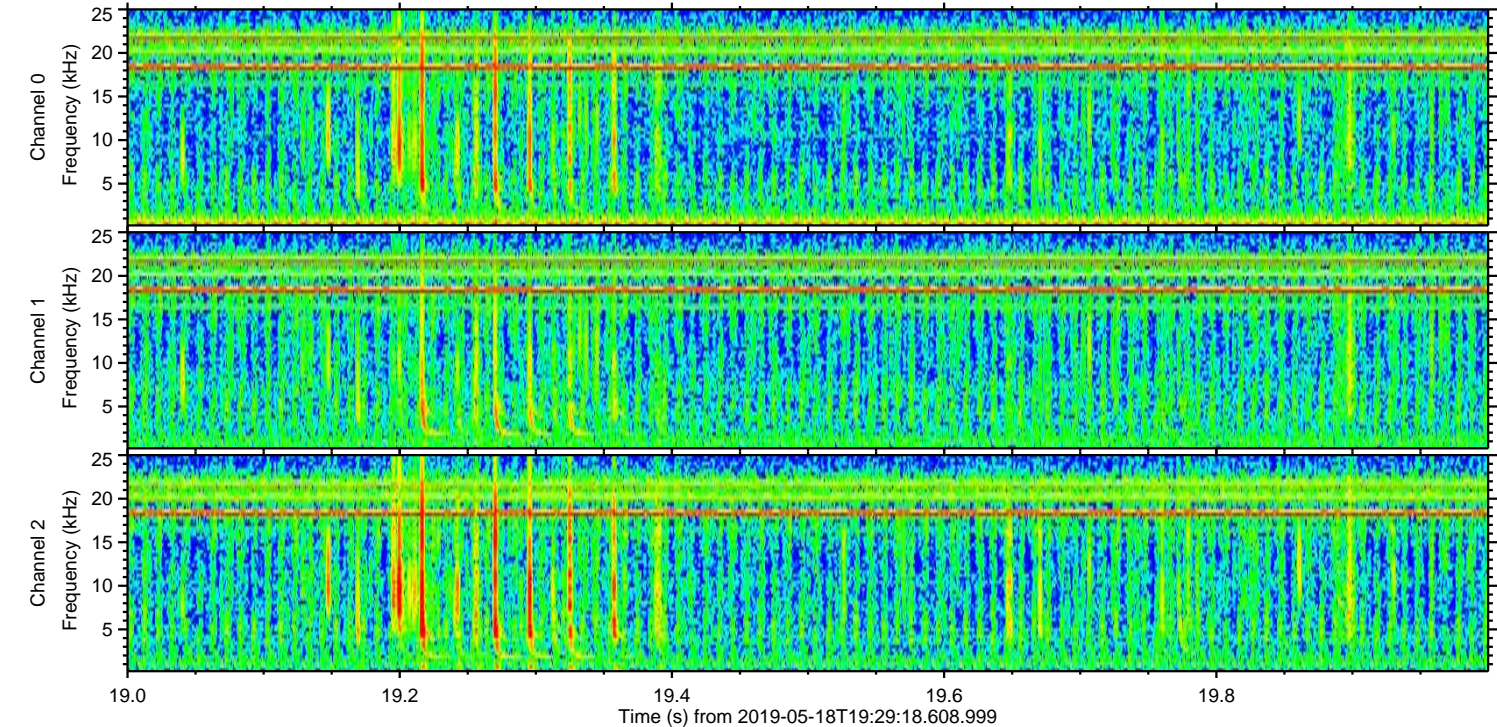
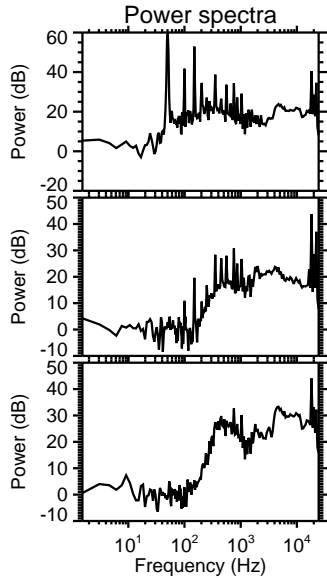
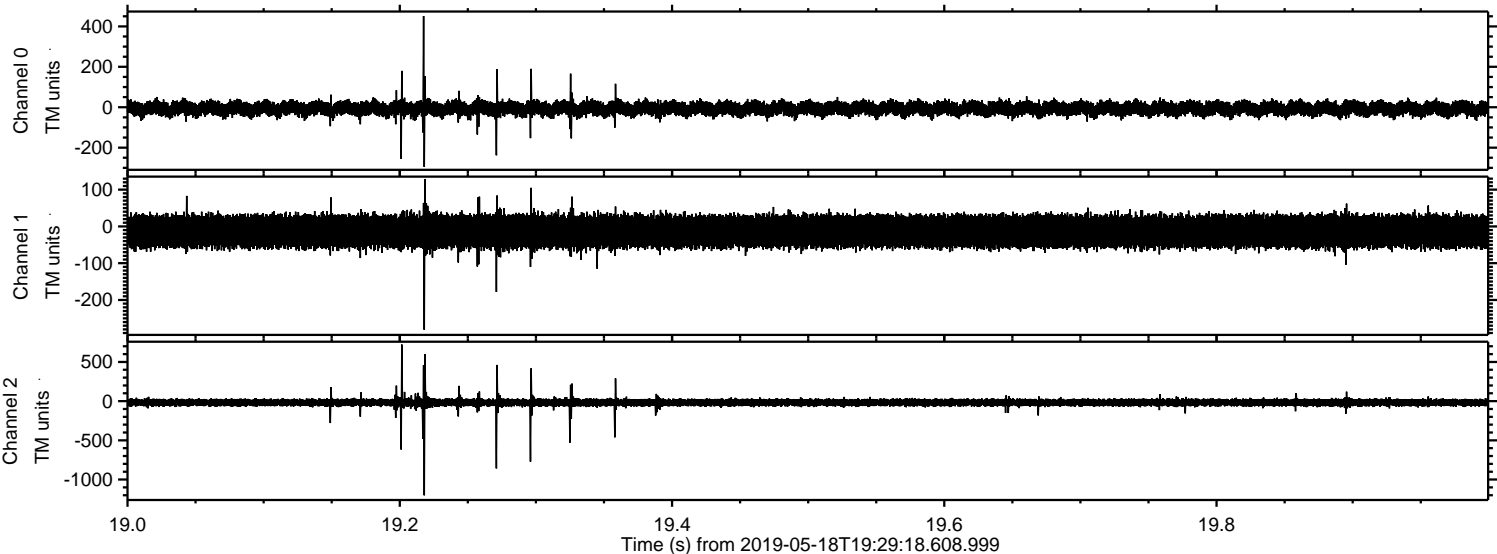


Channel 0
mn: -543
mx: 916
 μ : -7.5
 σ : 20.6

Channel 1
mn: -910
mx: 768
 μ : -13.6
 σ : 25.6

Channel 2
mn: -1355
mx: 1115
 μ : -17.9
 σ : 28.4

Processed Sat May 18 21:36:56 2019 by ELM ver.2012-10-06 from 001__elm20190518_192917__dat00.bin



Processed Sat May 18 21:36:57 2019 by ELM ver.2012-10-06 from 001__elm20190518_192917__dat00.bin

