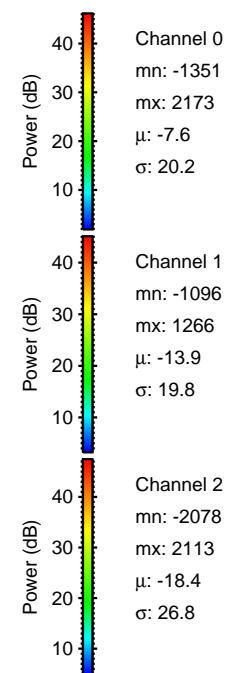
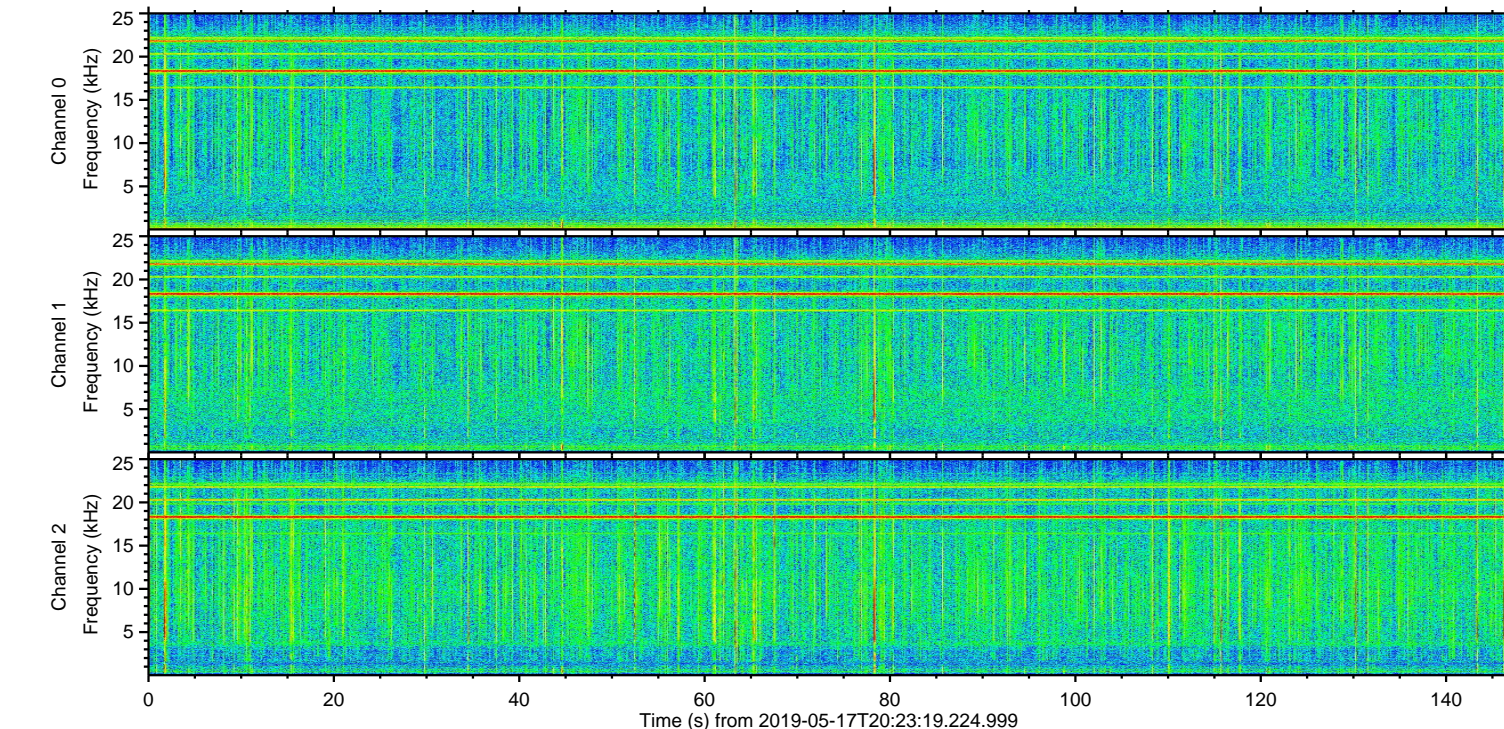
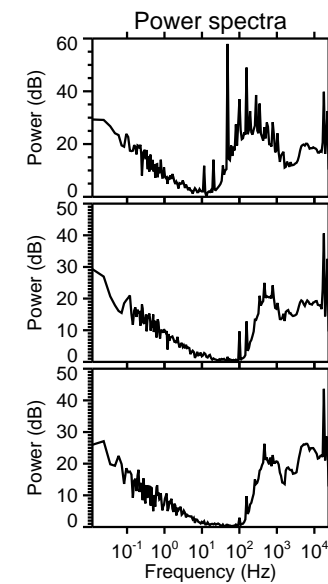
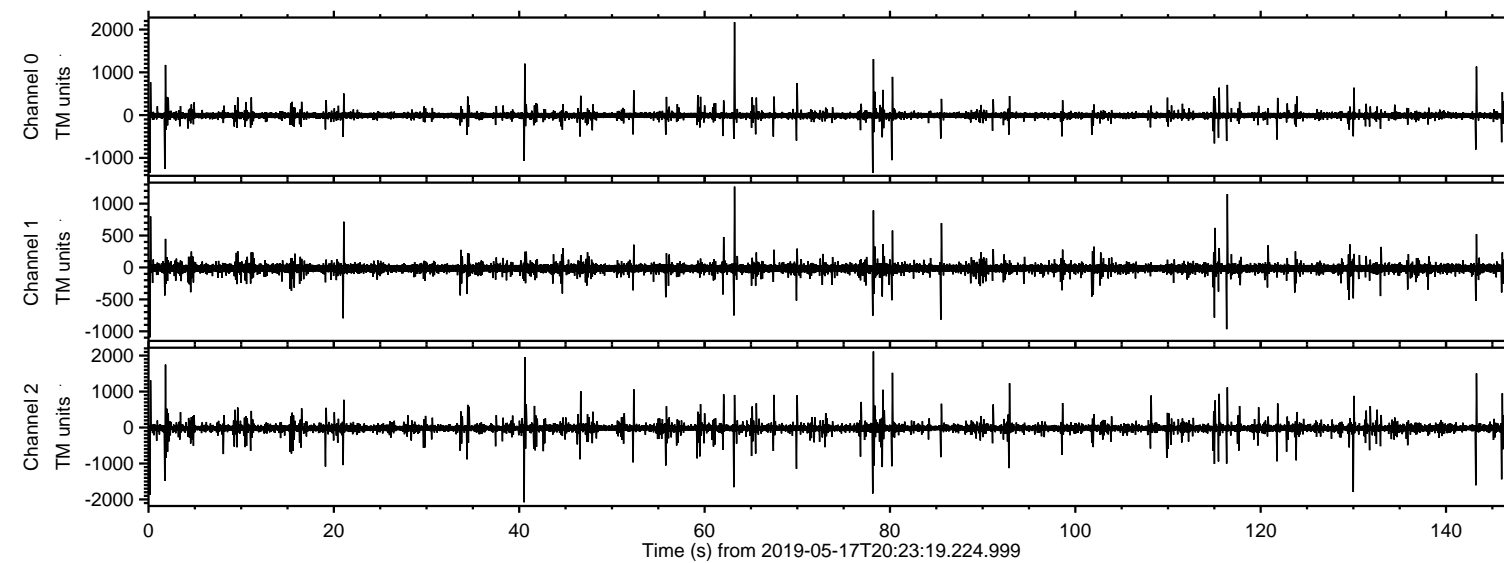
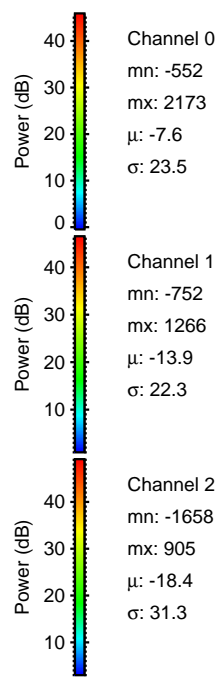
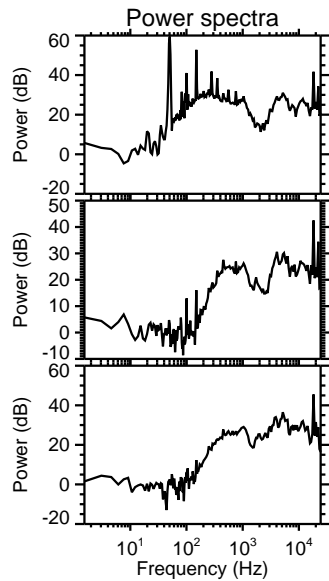
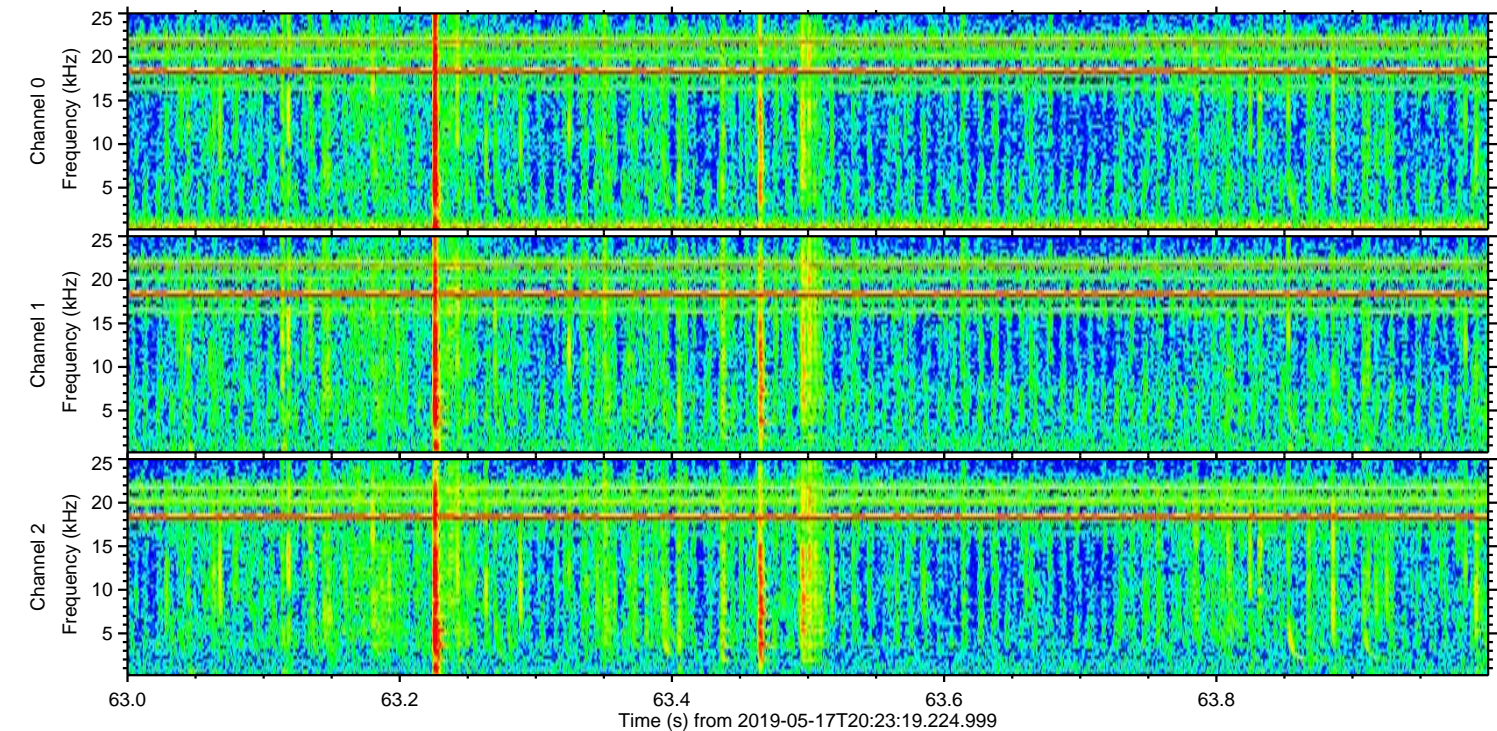
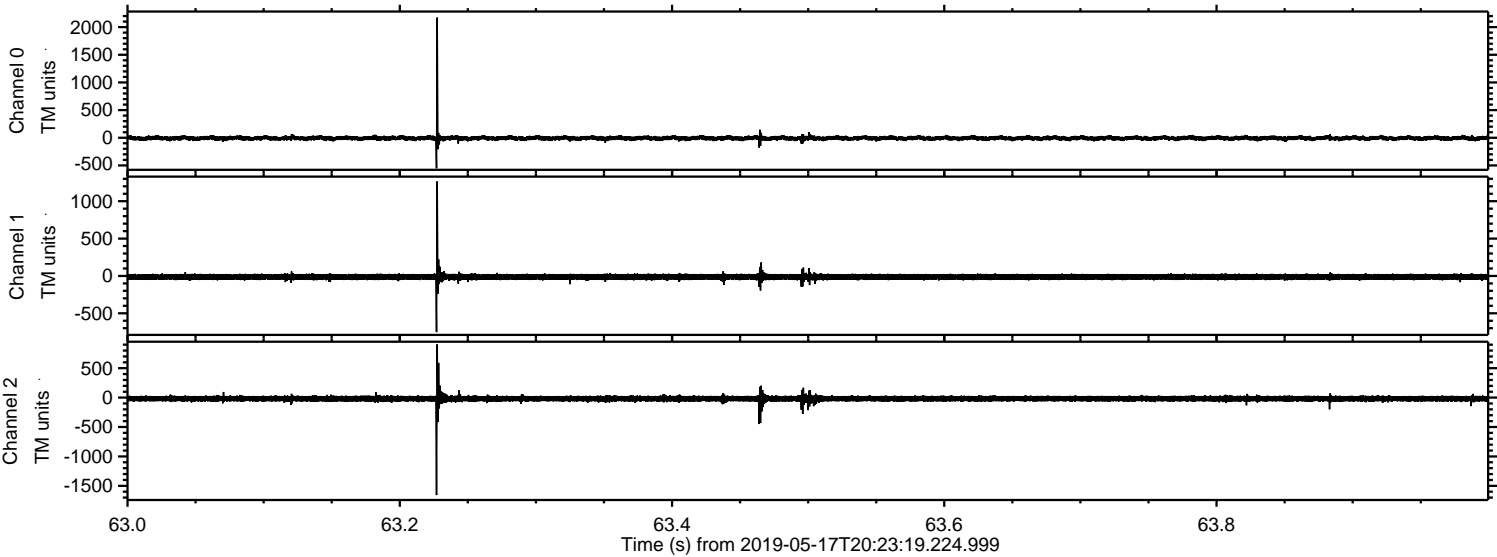


ELMAVAN 3D WAVEFORMS (Measured data sampled at 50 kHz) 51000 packets of 144 samples from 2019-05-17T20:23:19.224.999.

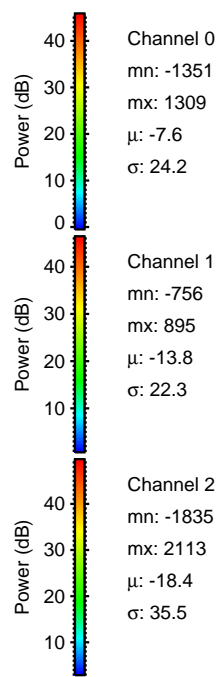
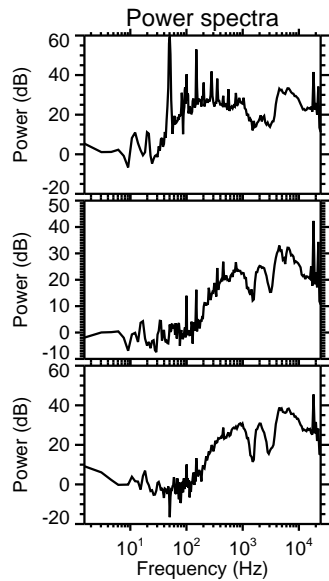
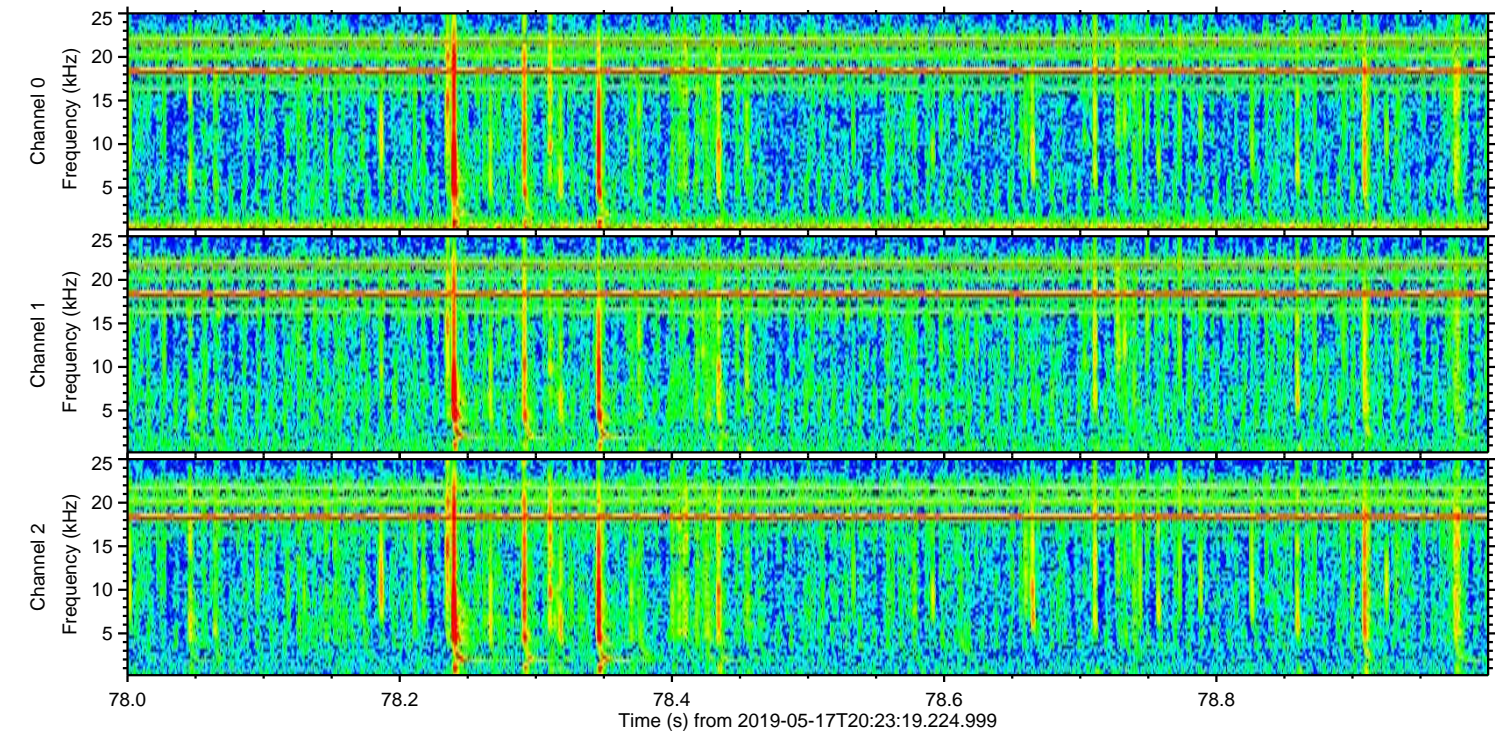
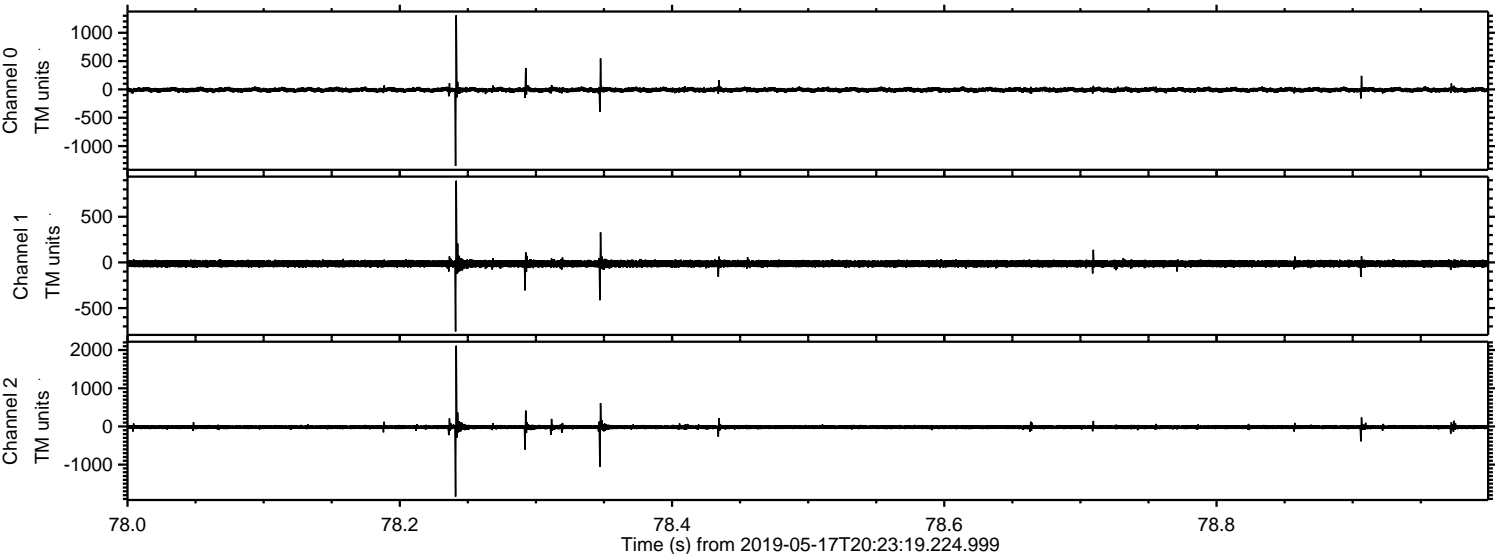
Processed Fri May 17 22:31:12 2019 by ELM ver.2012-10-06 from 001__elm20190517_202318__dat00.bin



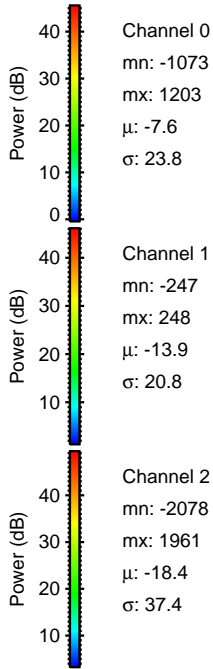
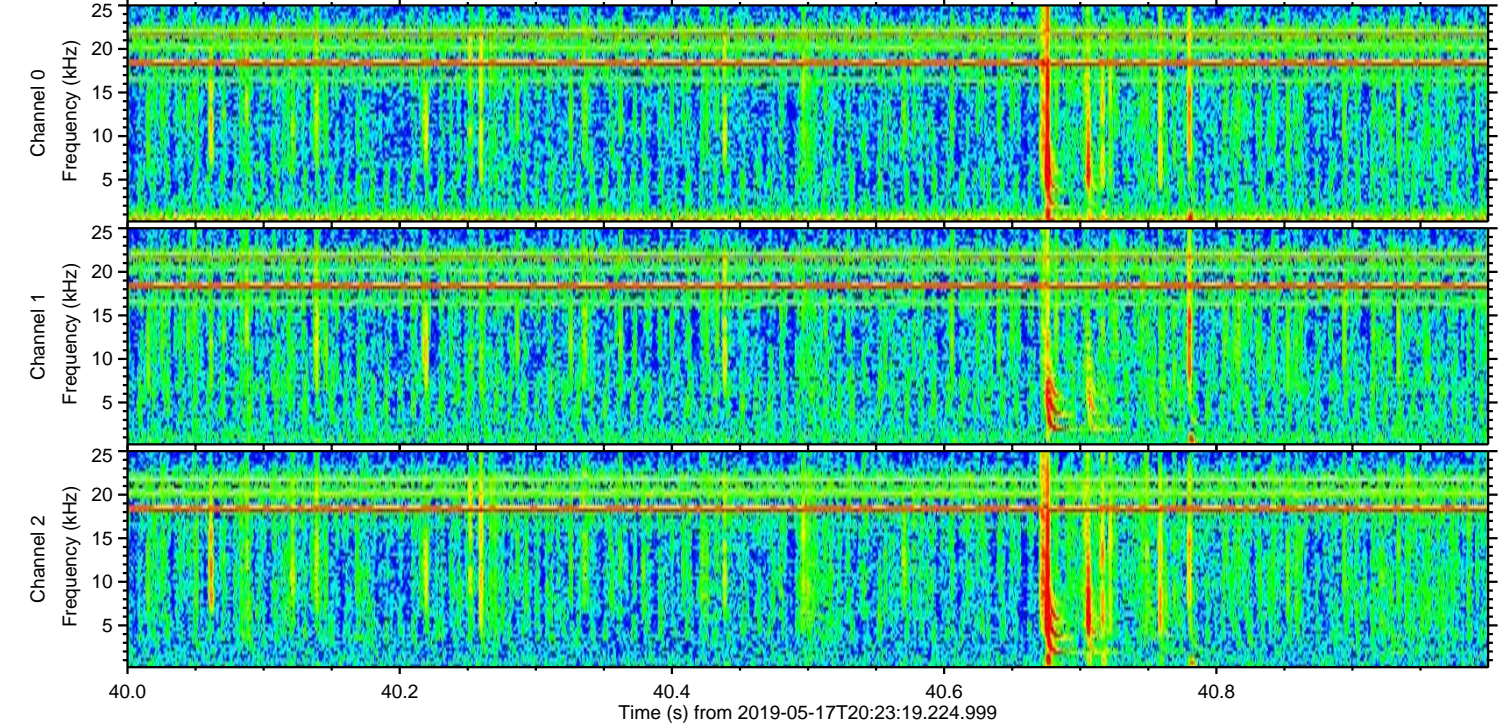
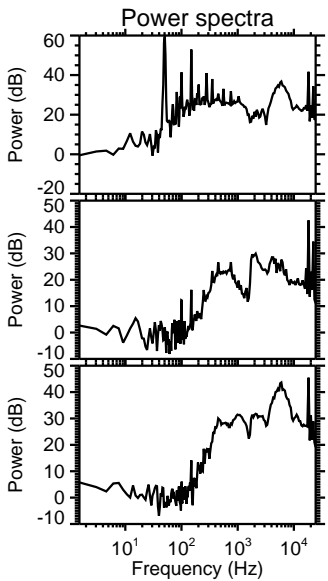
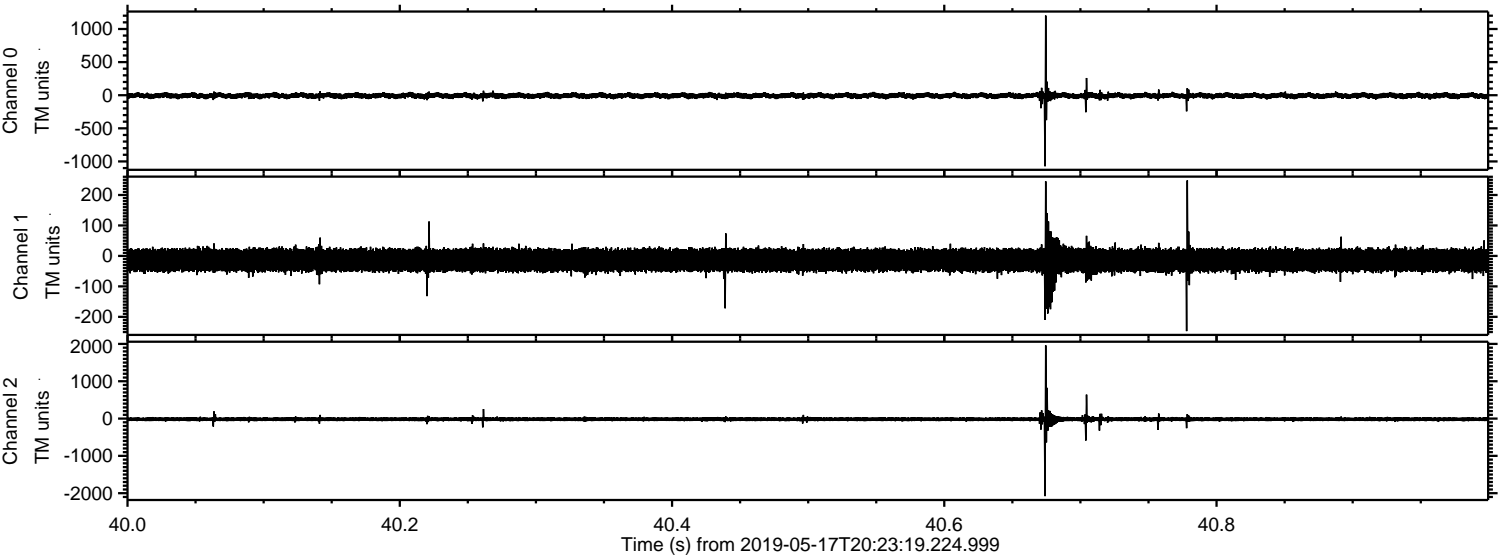
Processed Fri May 17 22:31:18 2019 by ELM ver.2012-10-06 from 001__elm20190517_202318__dat00.bin



Processed Fri May 17 22:31:19 2019 by ELM ver.2012-10-06 from 001__elm20190517_202318__dat00.bin

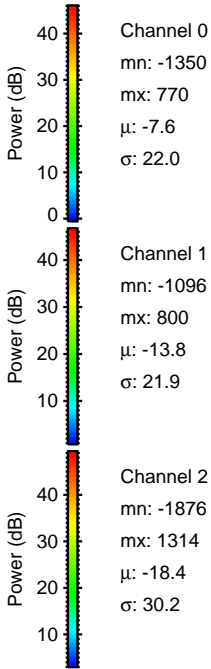
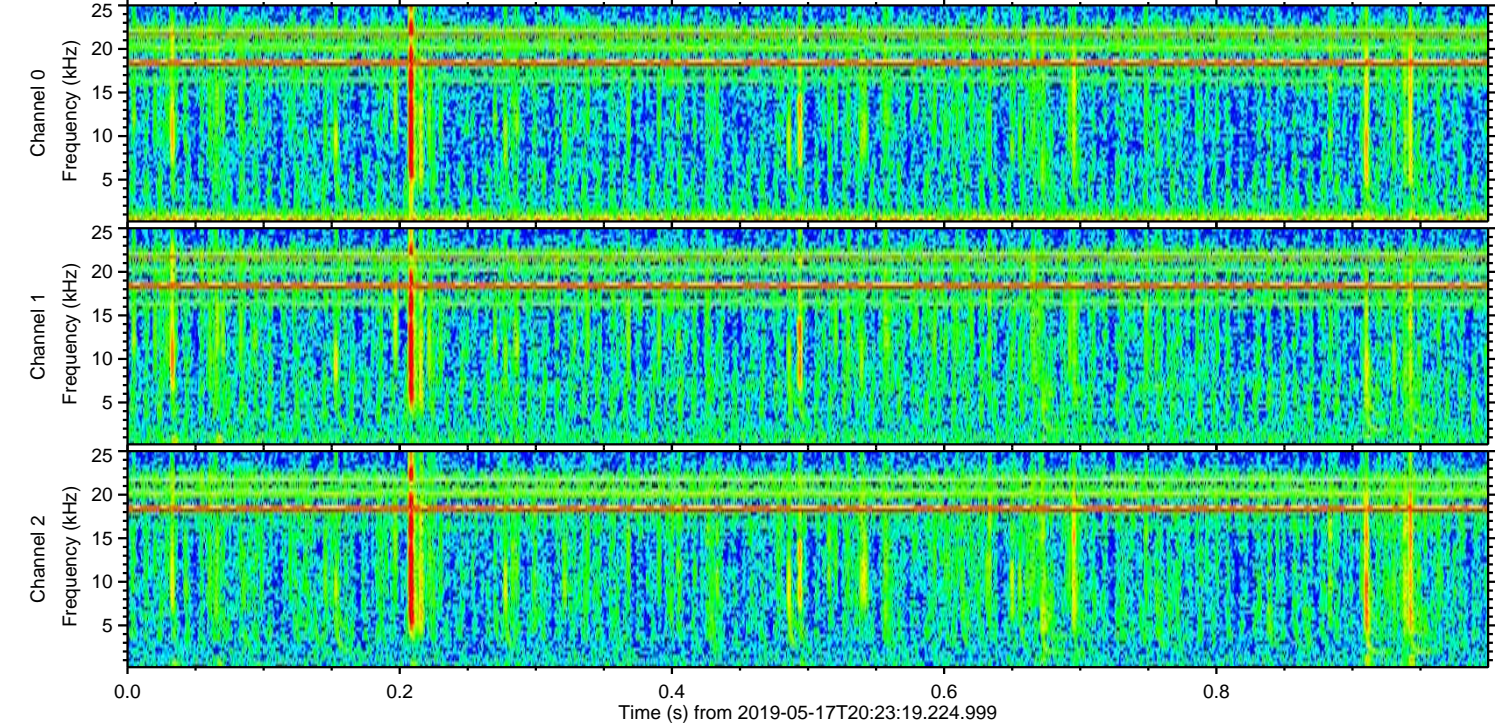
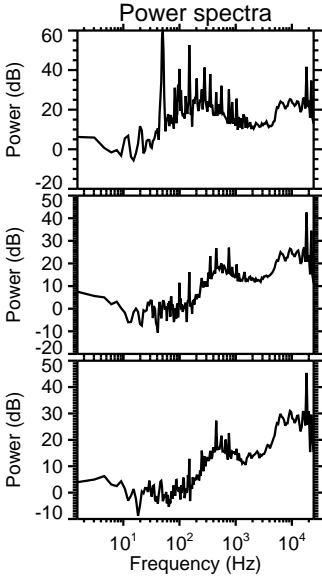
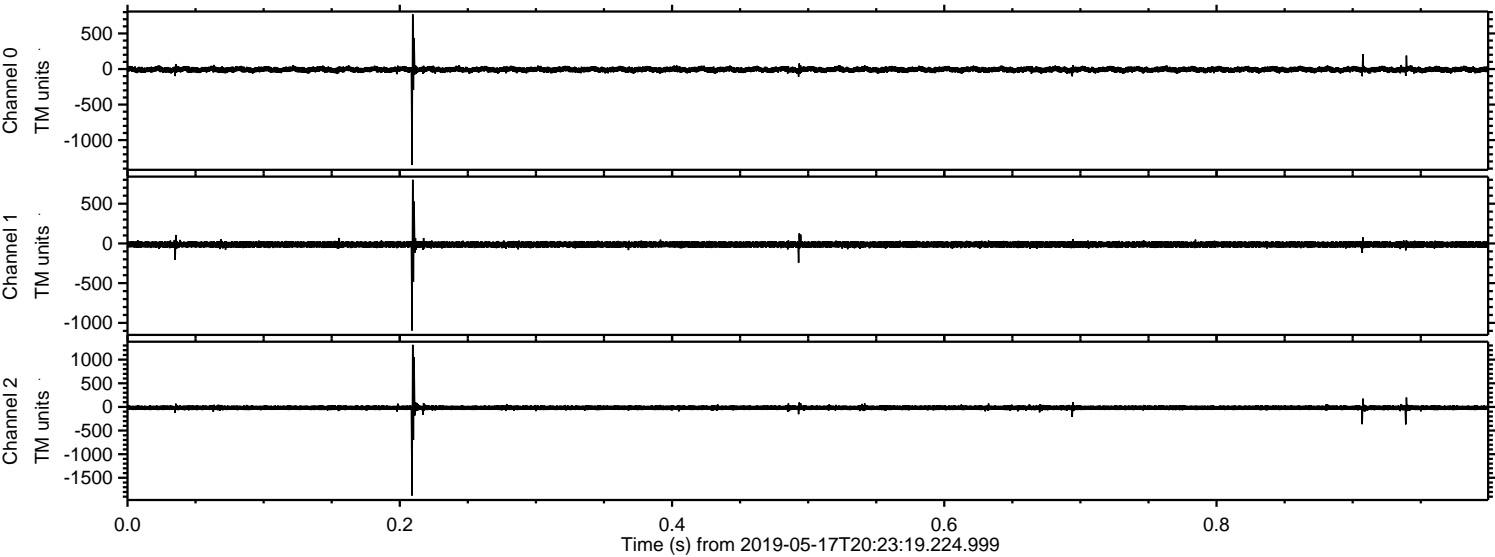


Processed Fri May 17 22:31:20 2019 by ELM ver.2012-10-06 from 001__elm20190517_202318__dat00.bin



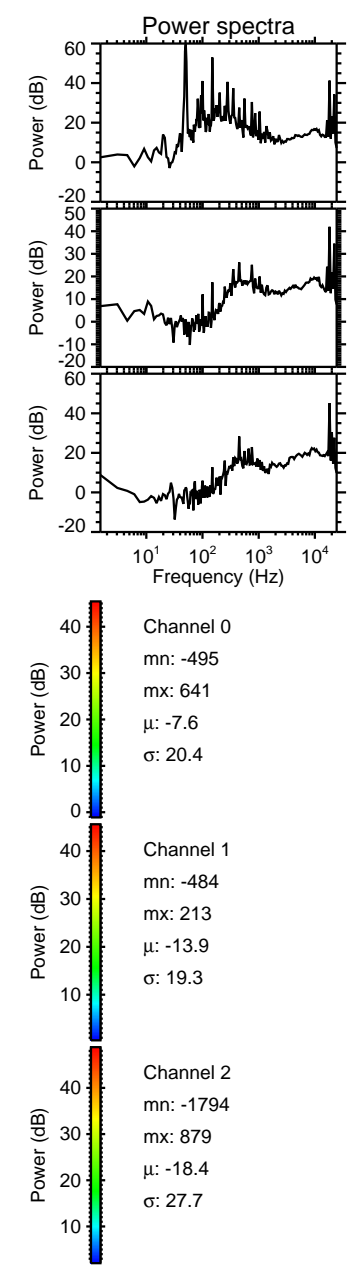
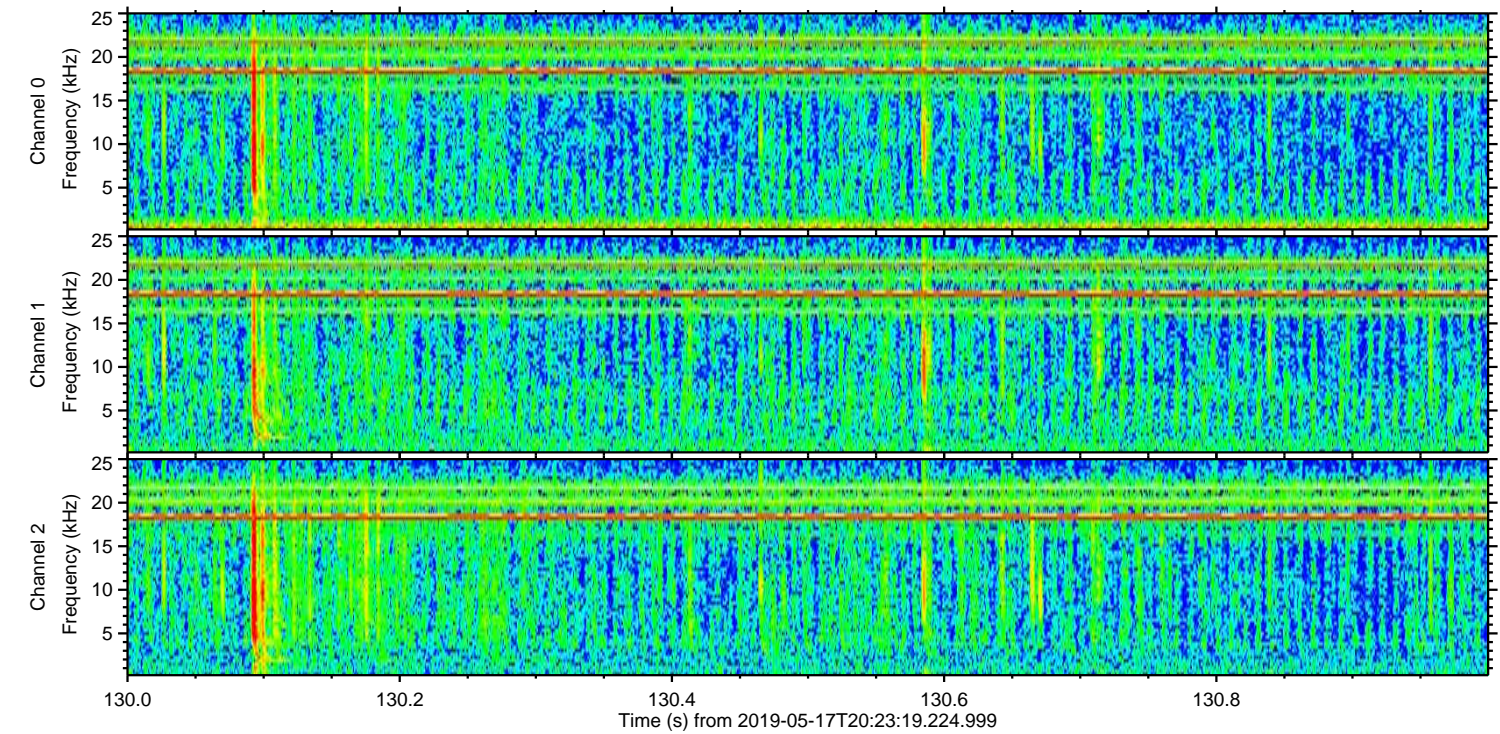
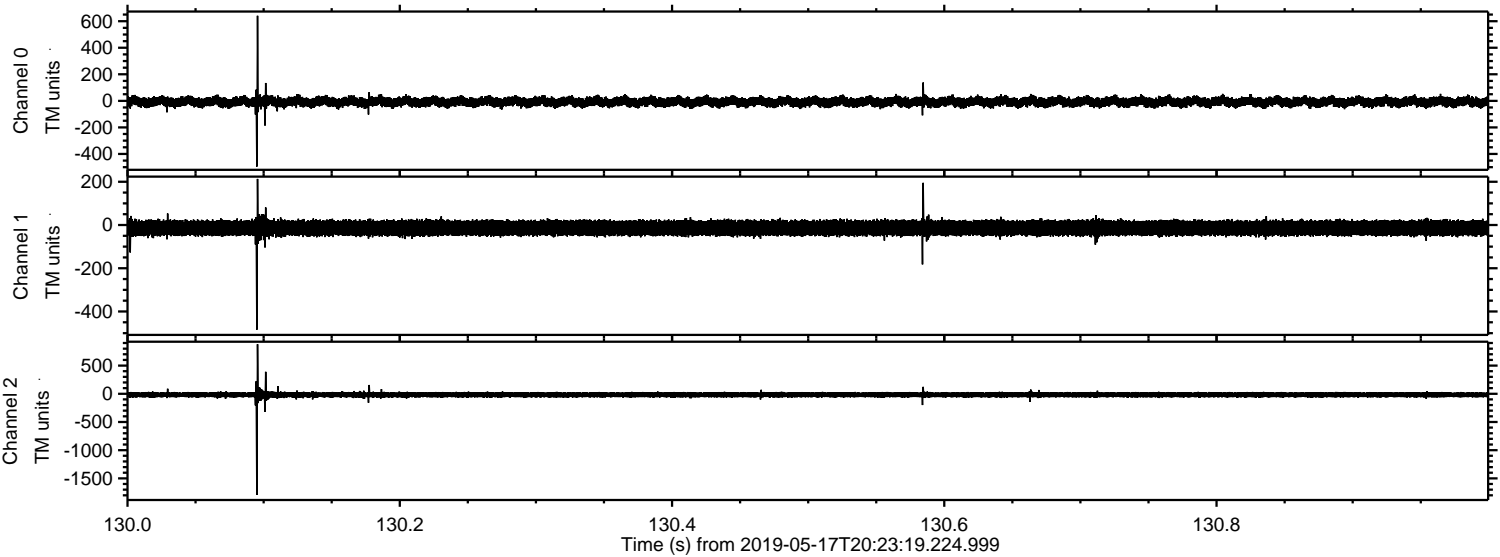
ELMAVAN 3D WAVEFORMS (Measured data sampled at 50 kHz) 51000 packets of 144 samples from 2019-05-17T20:23:19.224.999. Part 1/147

Processed Fri May 17 22:31:20 2019 by ELM ver.2012-10-06 from 001__elm20190517_202318__dat00.bin



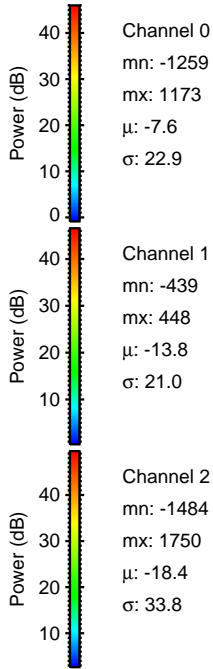
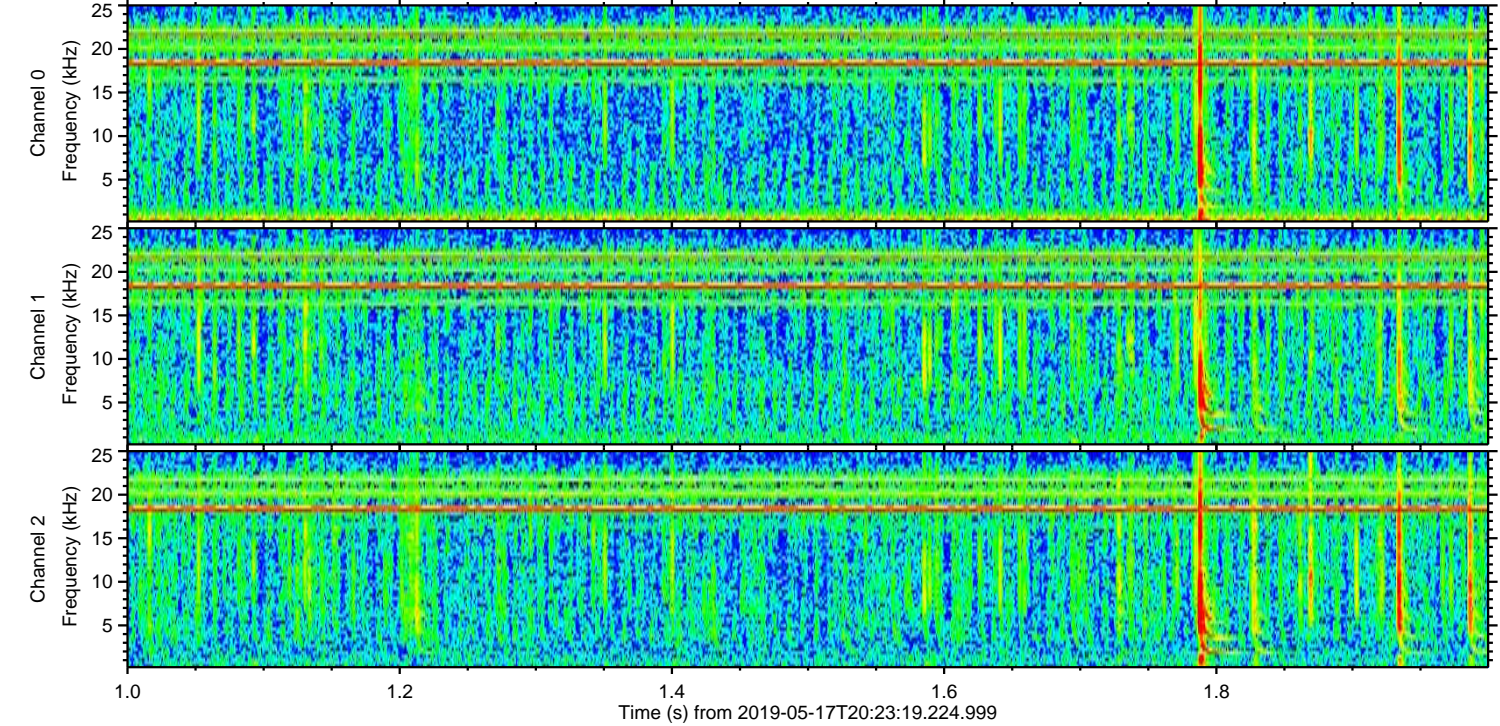
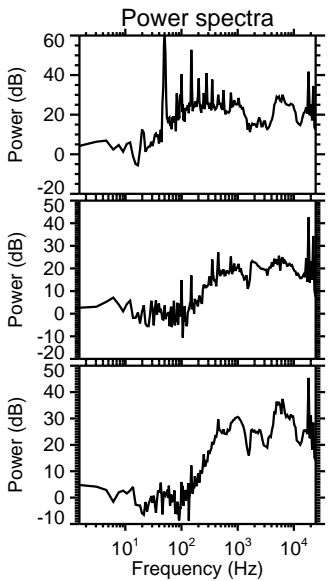
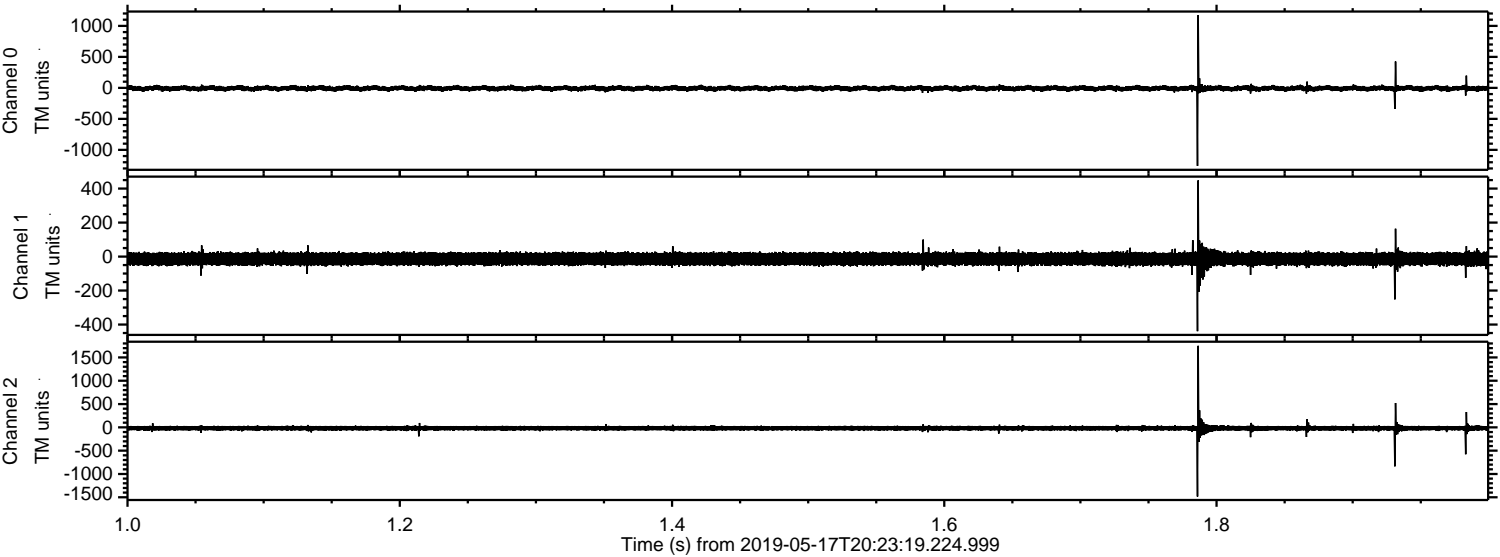
ELMAVAN 3D WAVEFORMS (Measured data sampled at 50 kHz) 51000 packets of 144 samples from 2019-05-17T20:23:19.224.999. Part 131/147

Processed Fri May 17 22:31:21 2019 by ELM ver.2012-10-06 from 001__elm20190517_202318__dat00.bin



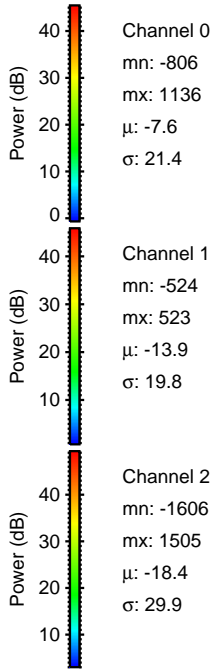
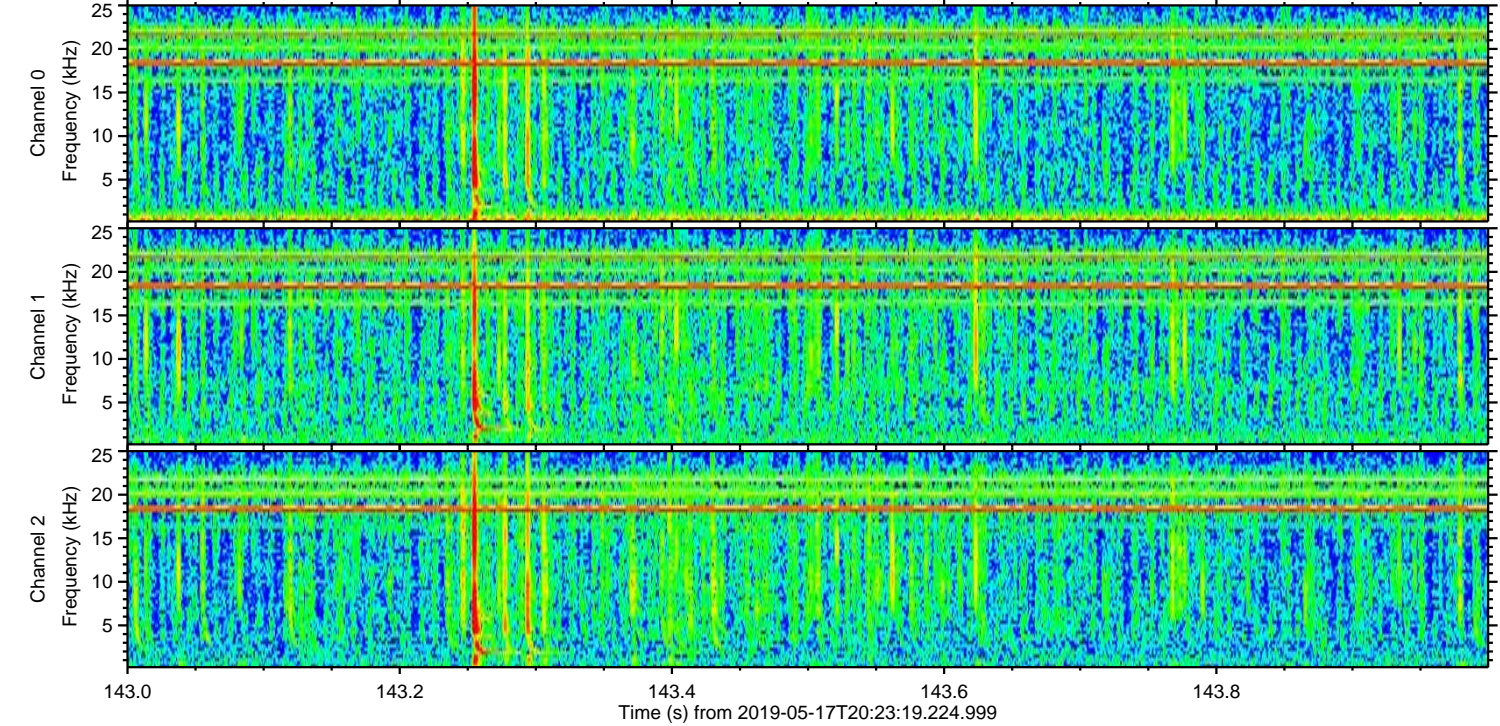
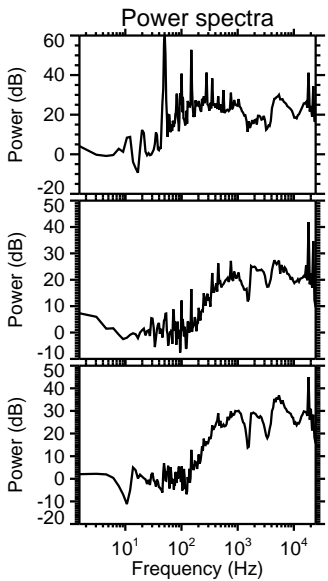
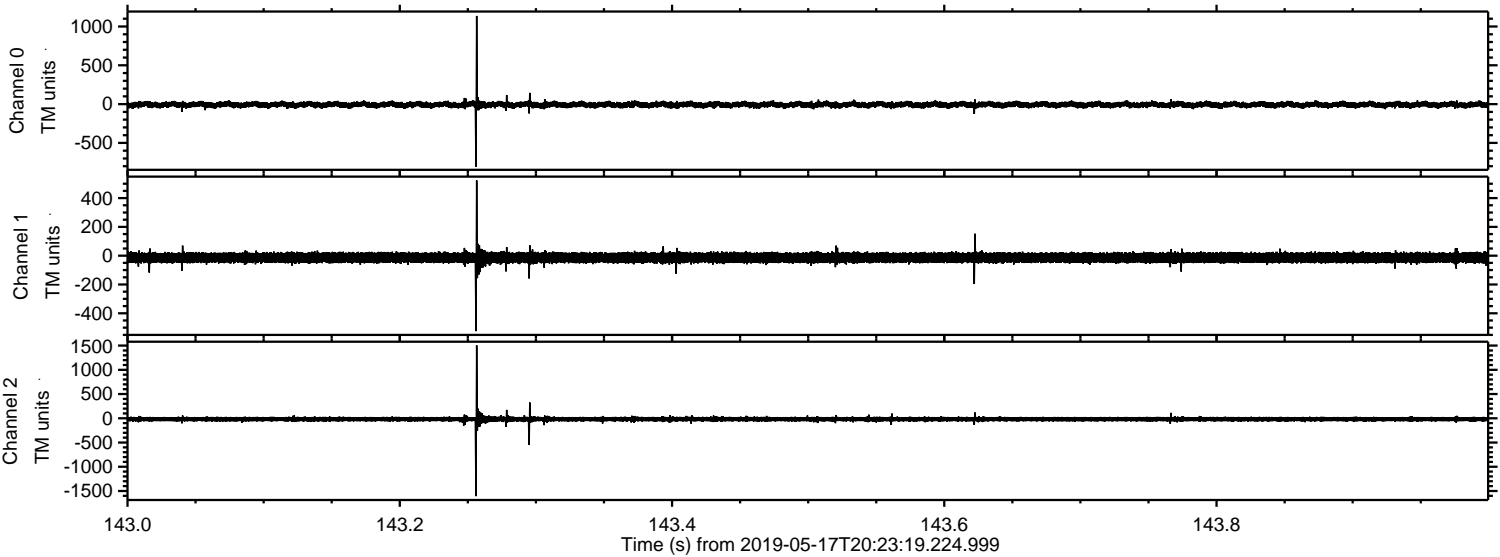
ELMAVAN 3D WAVEFORMS (Measured data sampled at 50 kHz) 51000 packets of 144 samples from 2019-05-17T20:23:19.224.999. Part 2/147

Processed Fri May 17 22:31:21 2019 by ELM ver.2012-10-06 from 001__elm20190517_202318__dat00.bin



ELMAVAN 3D WAVEFORMS (Measured data sampled at 50 kHz) 51000 packets of 144 samples from 2019-05-17T20:23:19.224.999. Part 144/147

Processed Fri May 17 22:31:22 2019 by ELM ver.2012-10-06 from 001__elm20190517_202318__dat00.bin

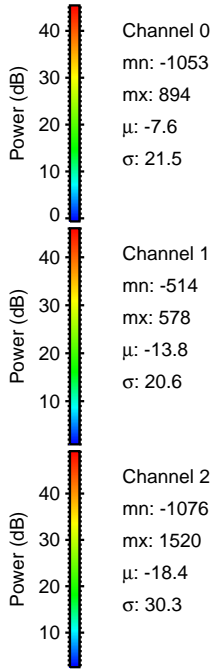
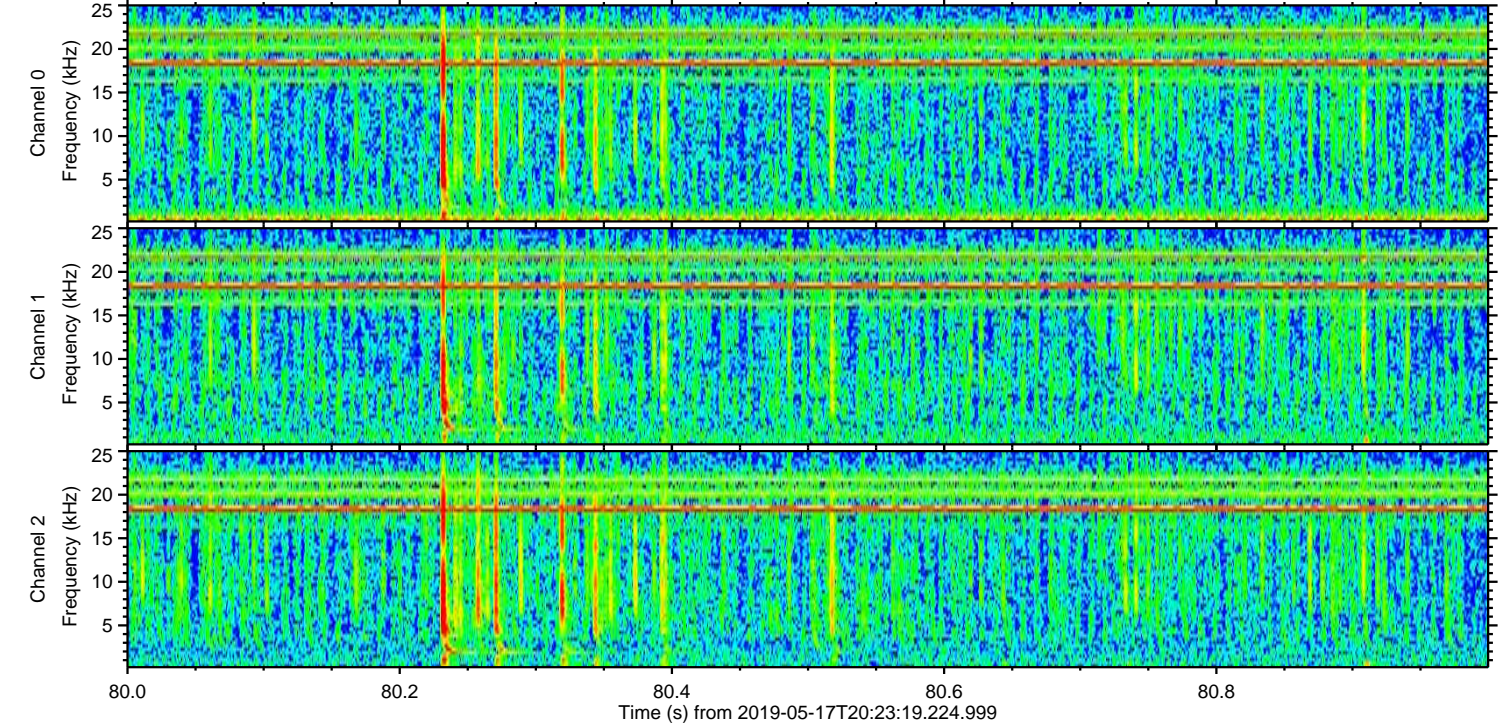
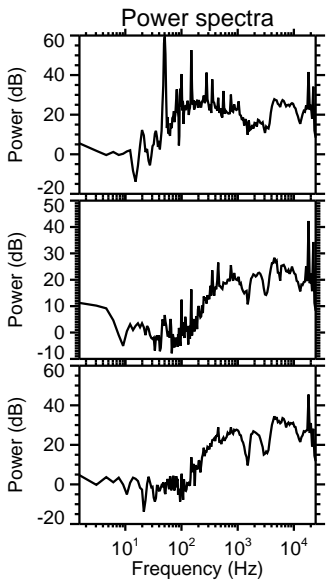
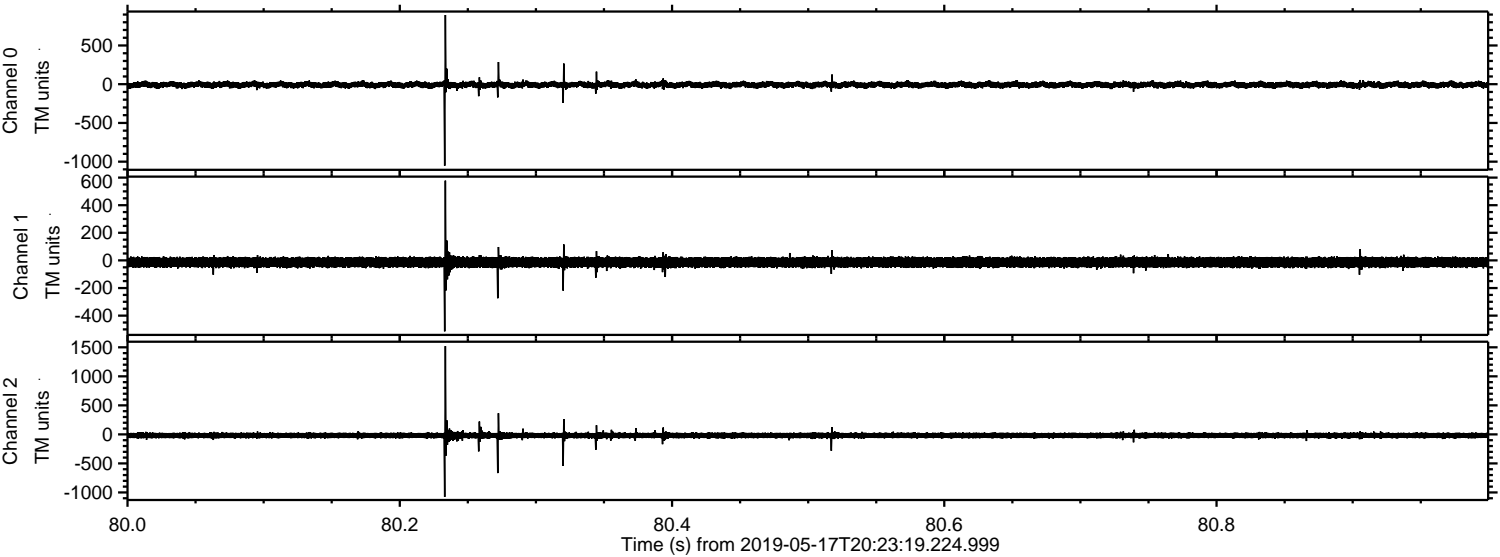


Channel 0
mn: -806
mx: 1136
 μ : -7.6
 σ : 21.4

Channel 1
mn: -524
mx: 523
 μ : -13.9
 σ : 19.8

Channel 2
mn: -1606
mx: 1505
 μ : -18.4
 σ : 29.9

Processed Fri May 17 22:31:23 2019 by ELM ver.2012-10-06 from 001__elm20190517_202318__dat00.bin



Processed Fri May 17 22:31:23 2019 by ELM ver.2012-10-06 from 001__elm20190517_202318__dat00.bin

