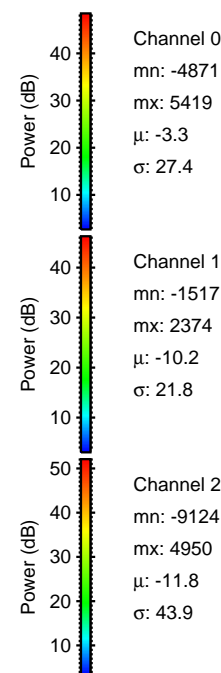
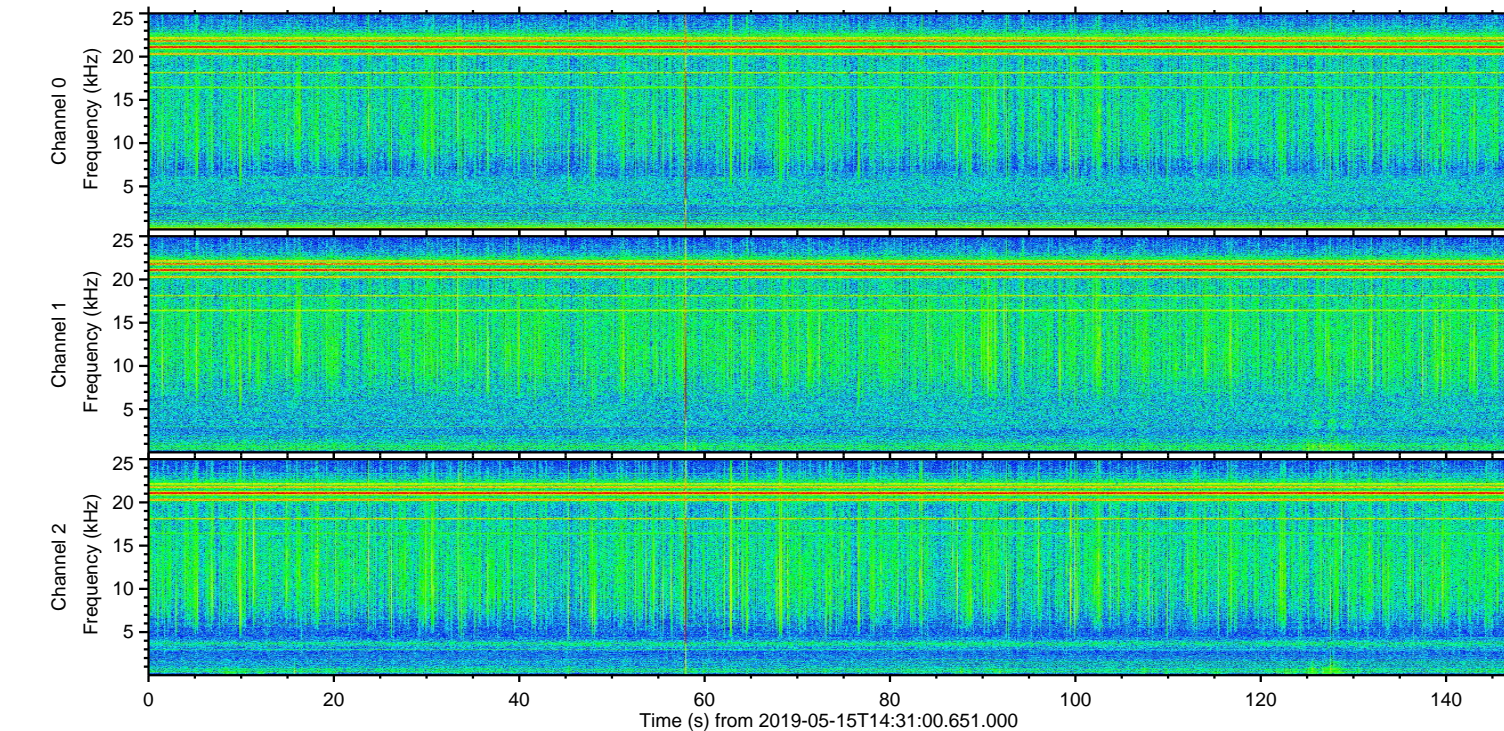
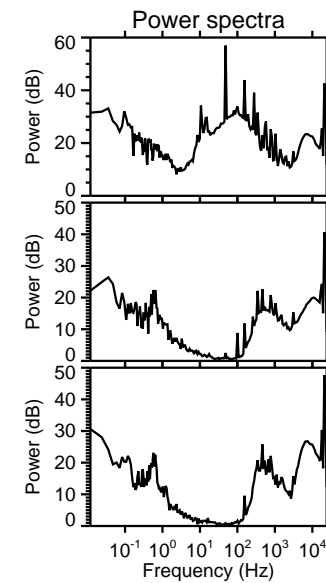
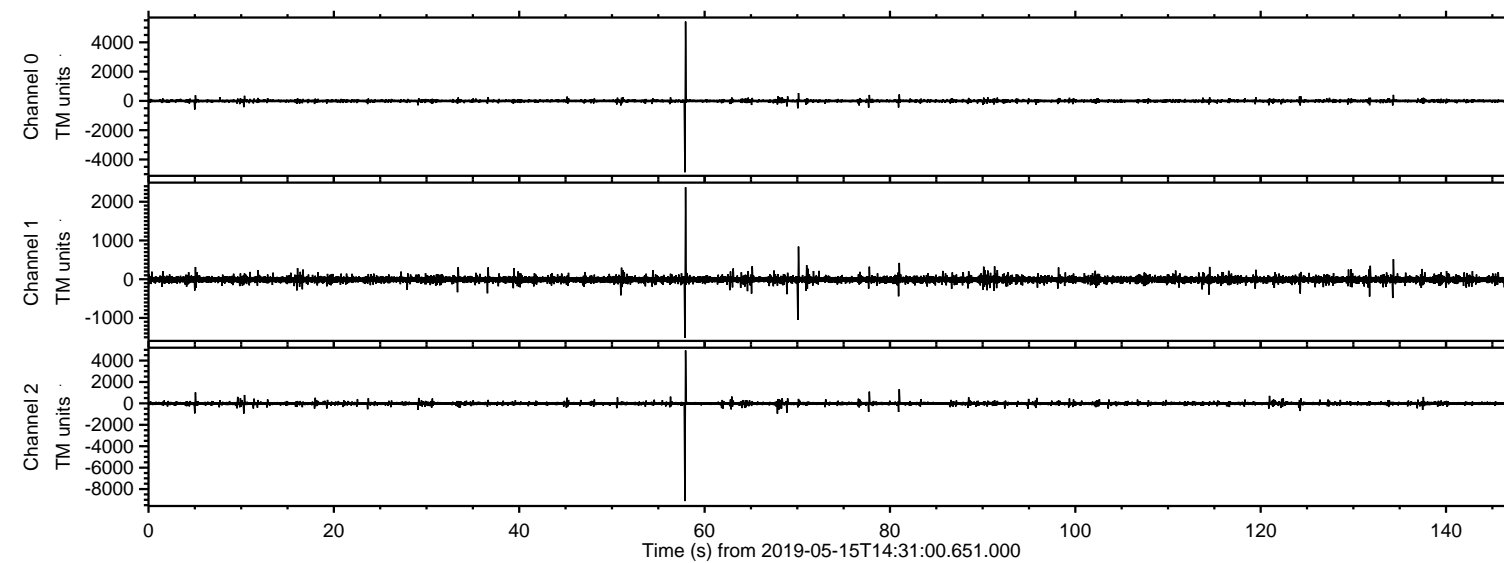
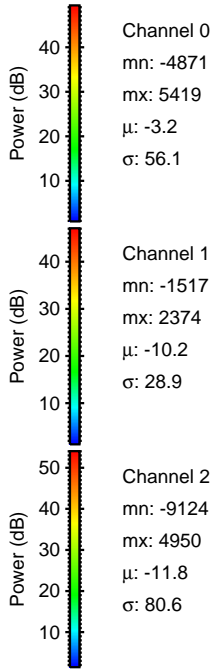
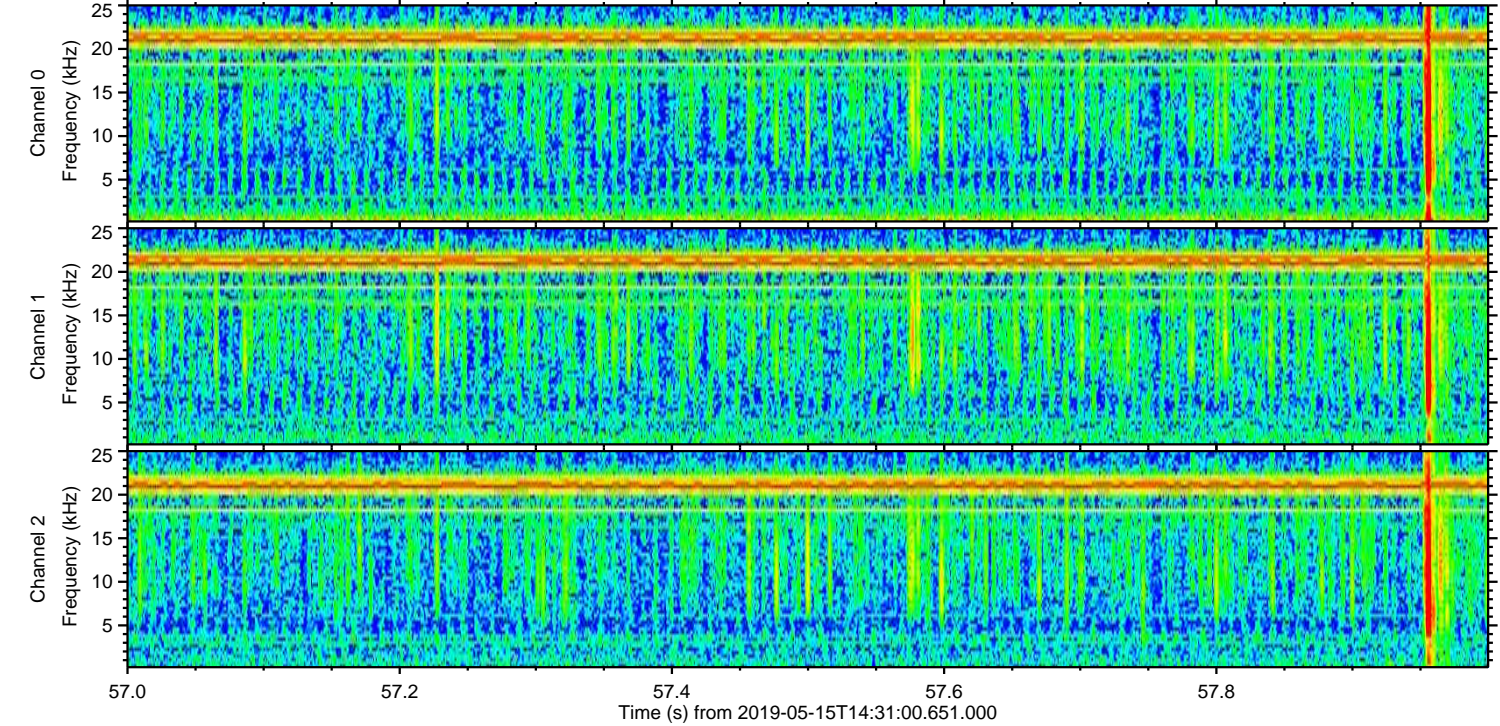
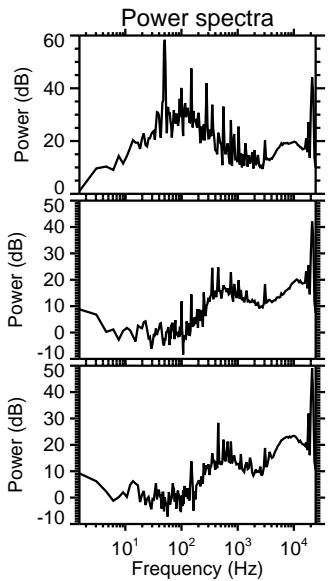
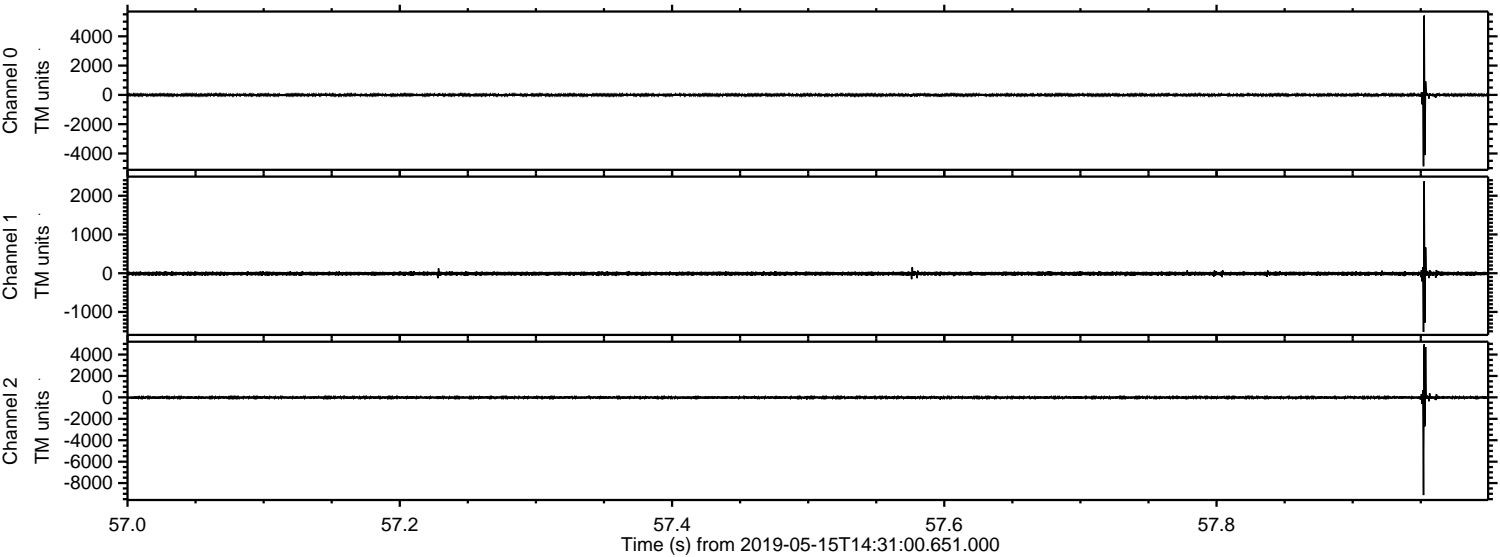


ELMAVAN 3D WAVEFORMS (Measured data sampled at 50 kHz) 51000 packets of 144 samples from 2019-05-15T14:31:00.651.000.

Processed Wed May 15 16:38:56 2019 by ELM ver.2012-10-06 from 001__elm20190515_143059__dat00.bin



Processed Wed May 15 16:39:02 2019 by ELM ver.2012-10-06 from 001__elm20190515_143059__dat00.bin

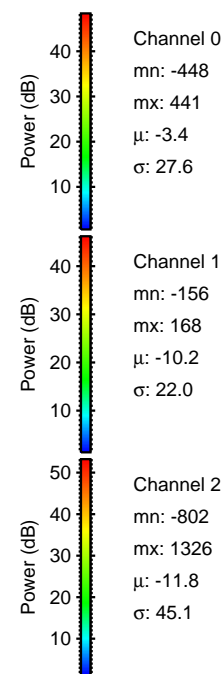
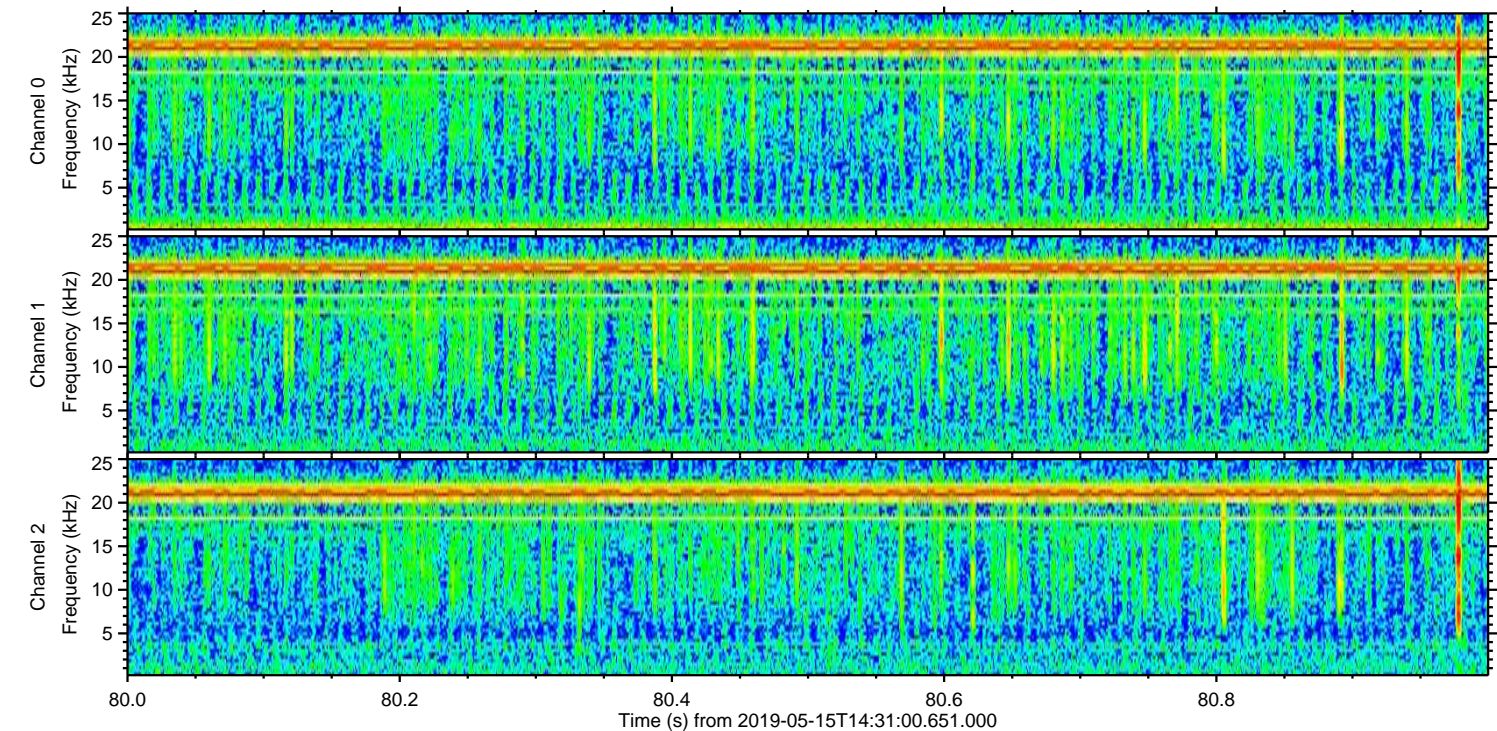
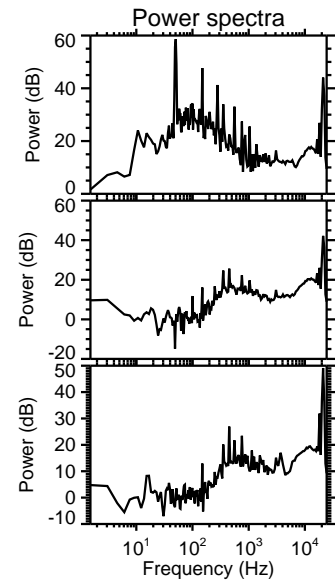
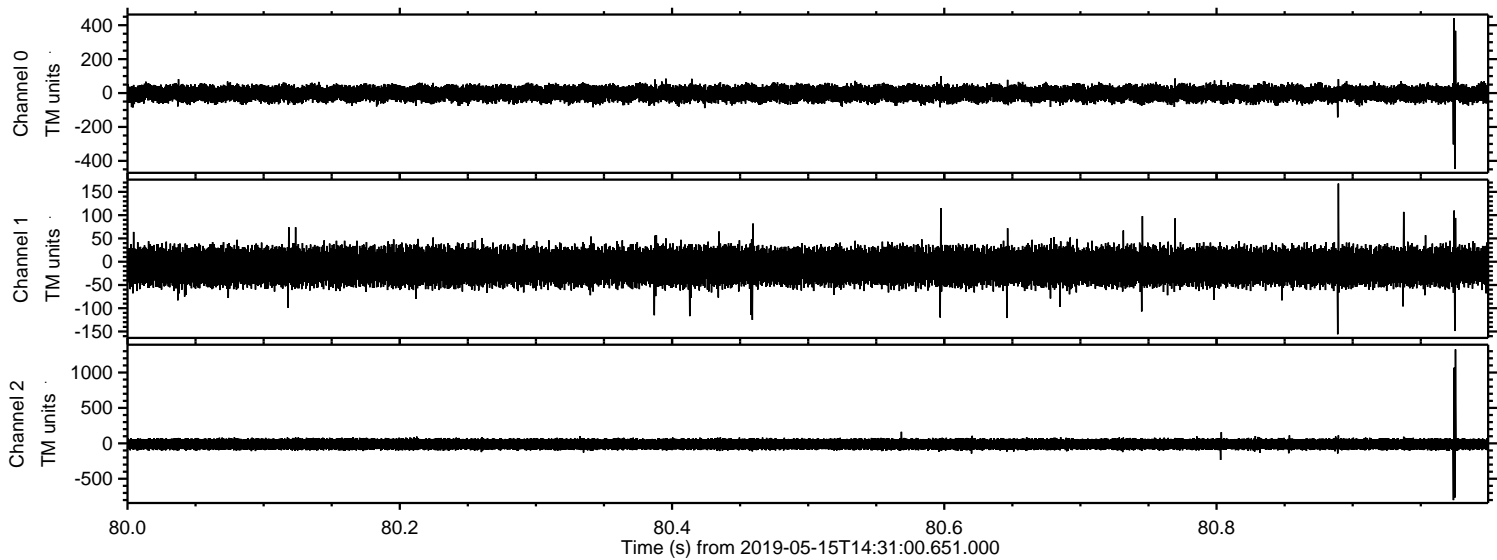


Channel 0
mn: -4871
mx: 5419
 μ : -3.2
 σ : 56.1

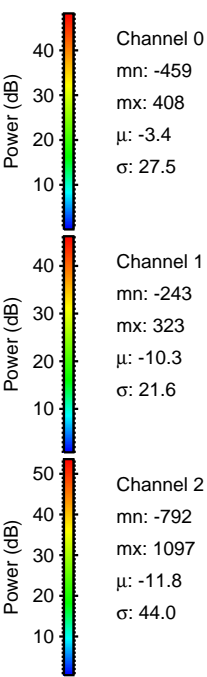
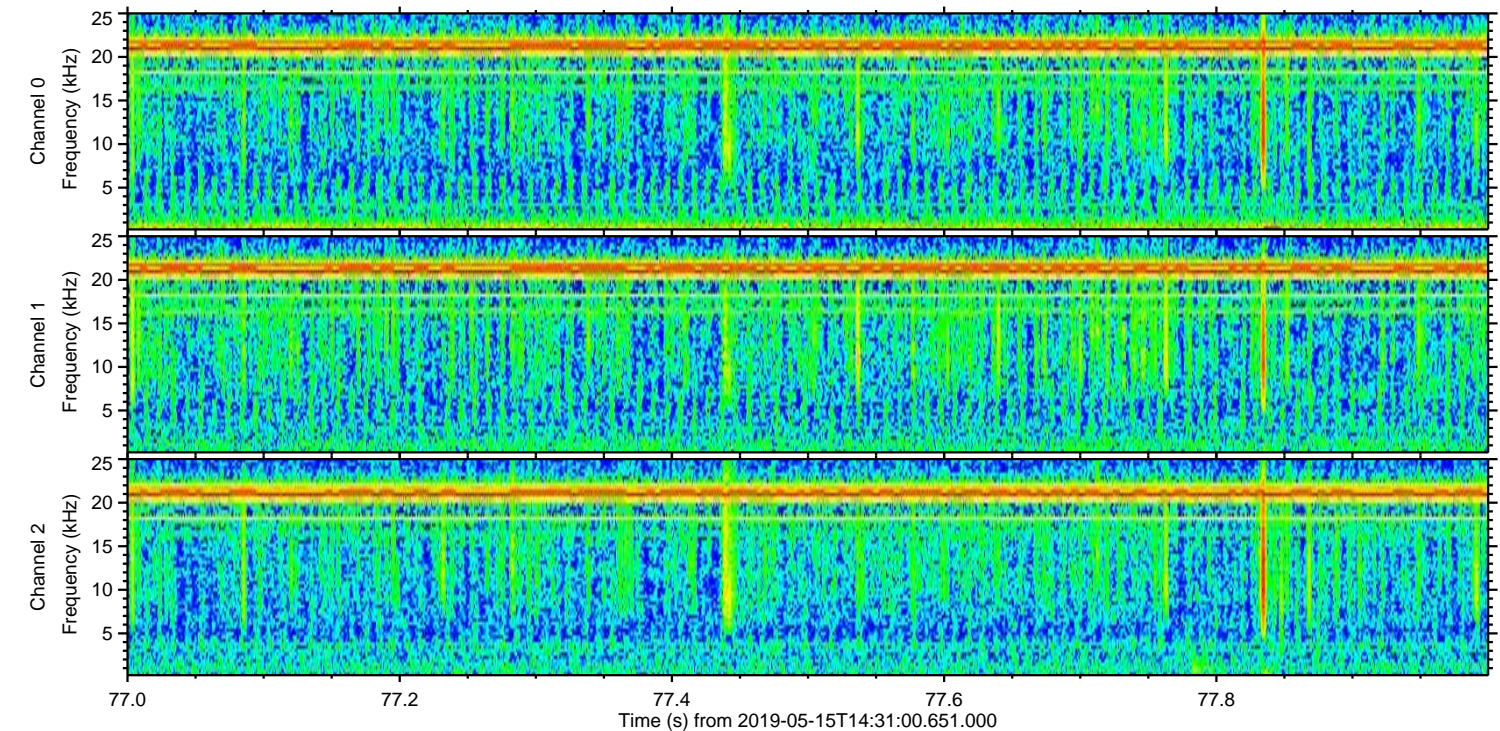
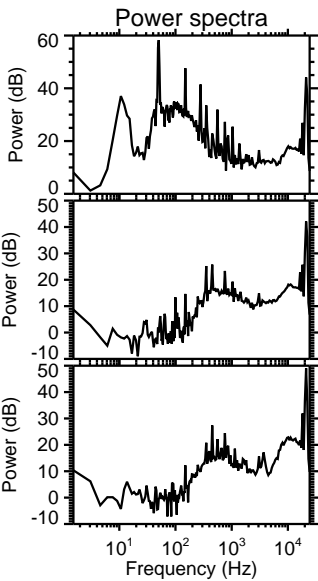
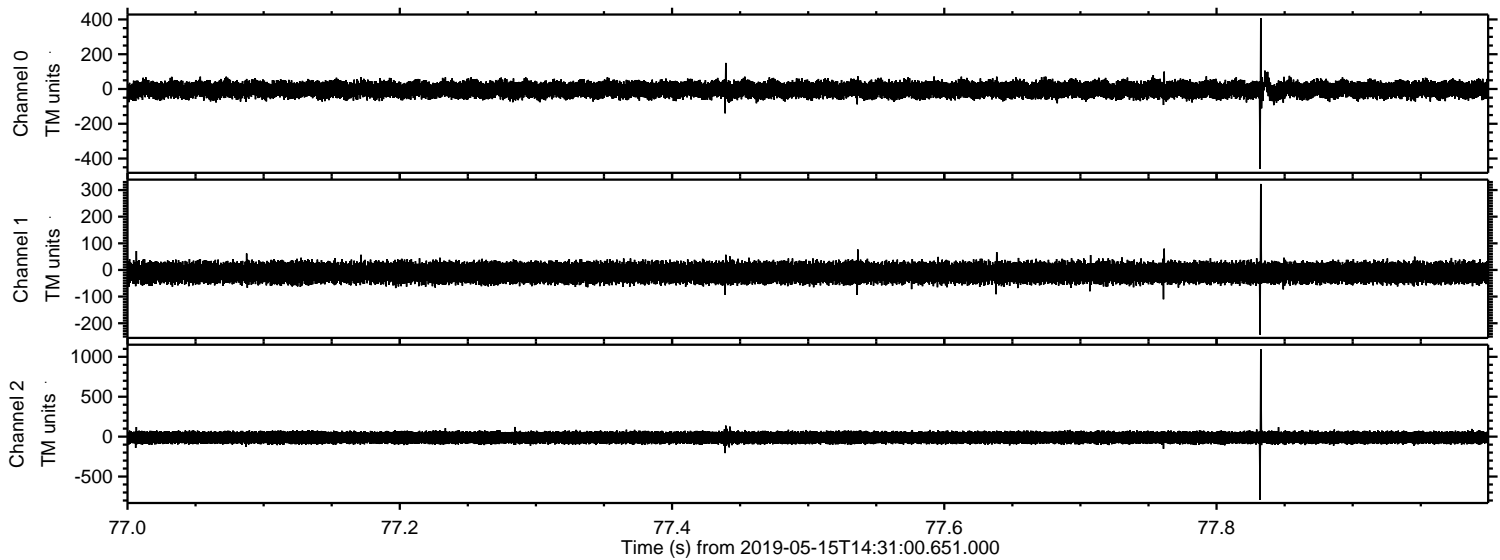
Channel 1
mn: -1517
mx: 2374
 μ : -10.2
 σ : 28.9

Channel 2
mn: -9124
mx: 4950
 μ : -11.8
 σ : 80.6

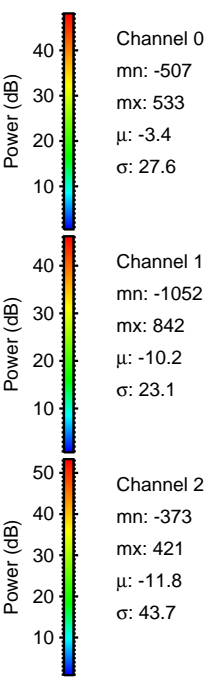
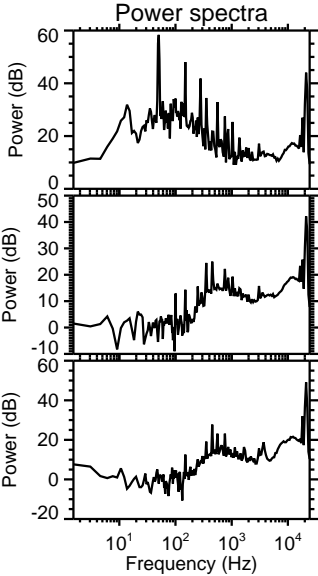
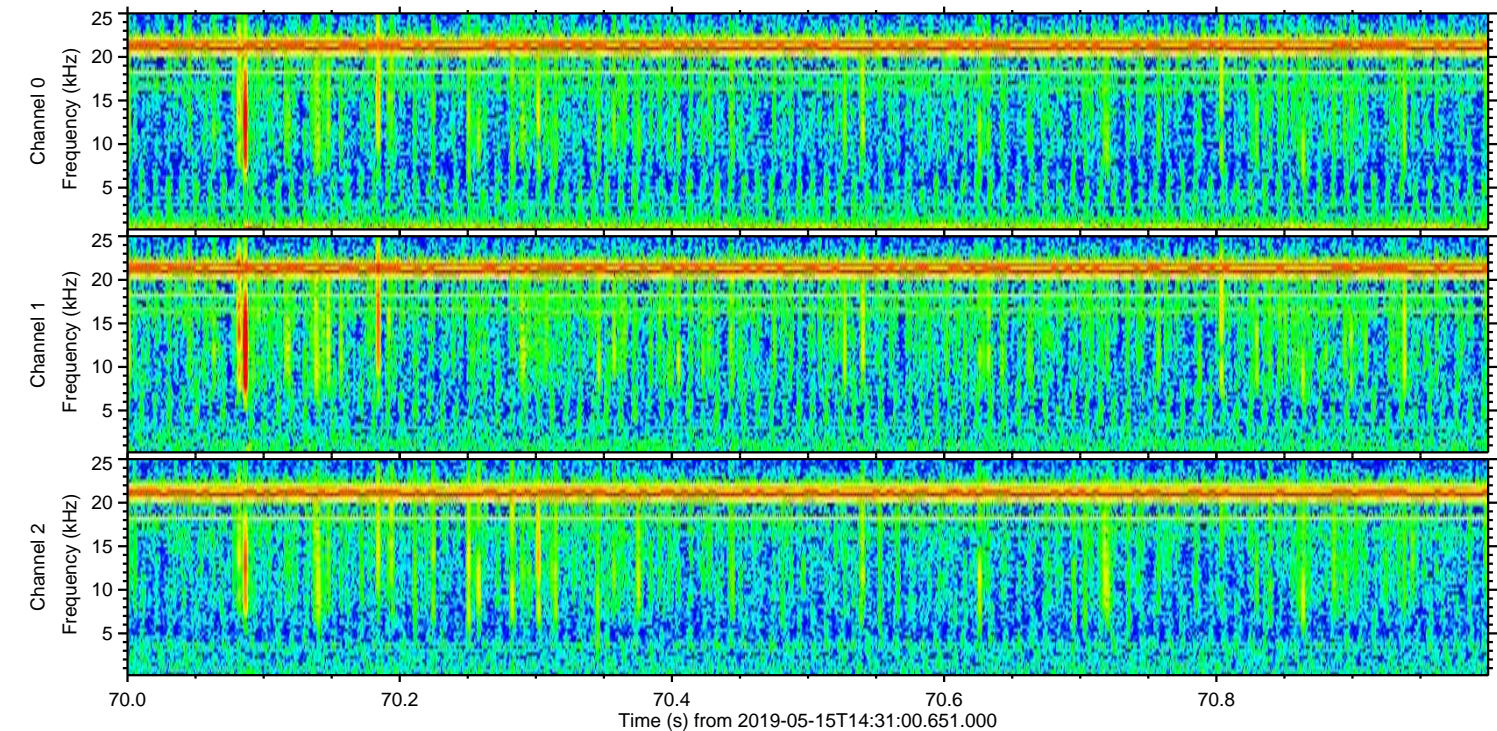
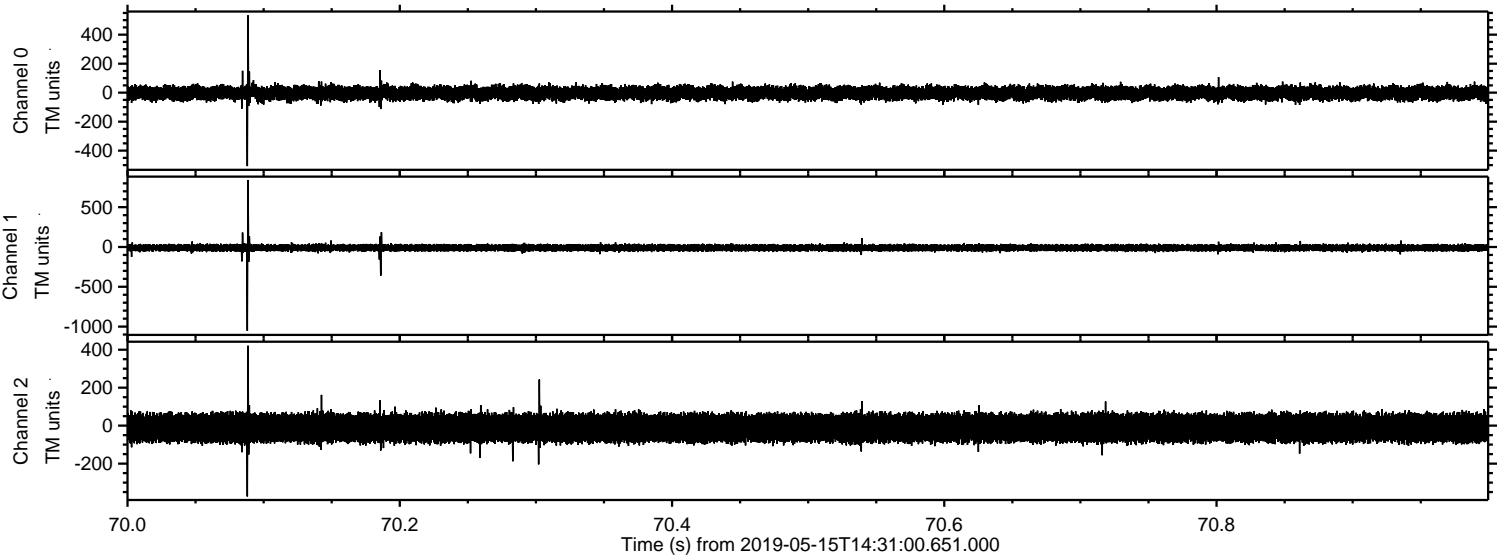
Processed Wed May 15 16:39:02 2019 by ELM ver.2012-10-06 from 001__elm20190515_143059__dat00.bin



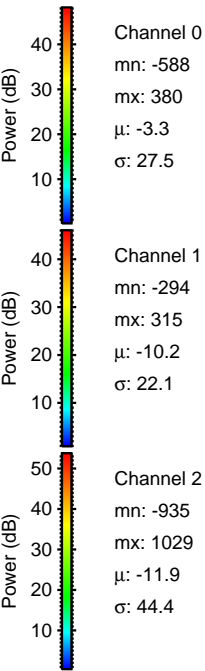
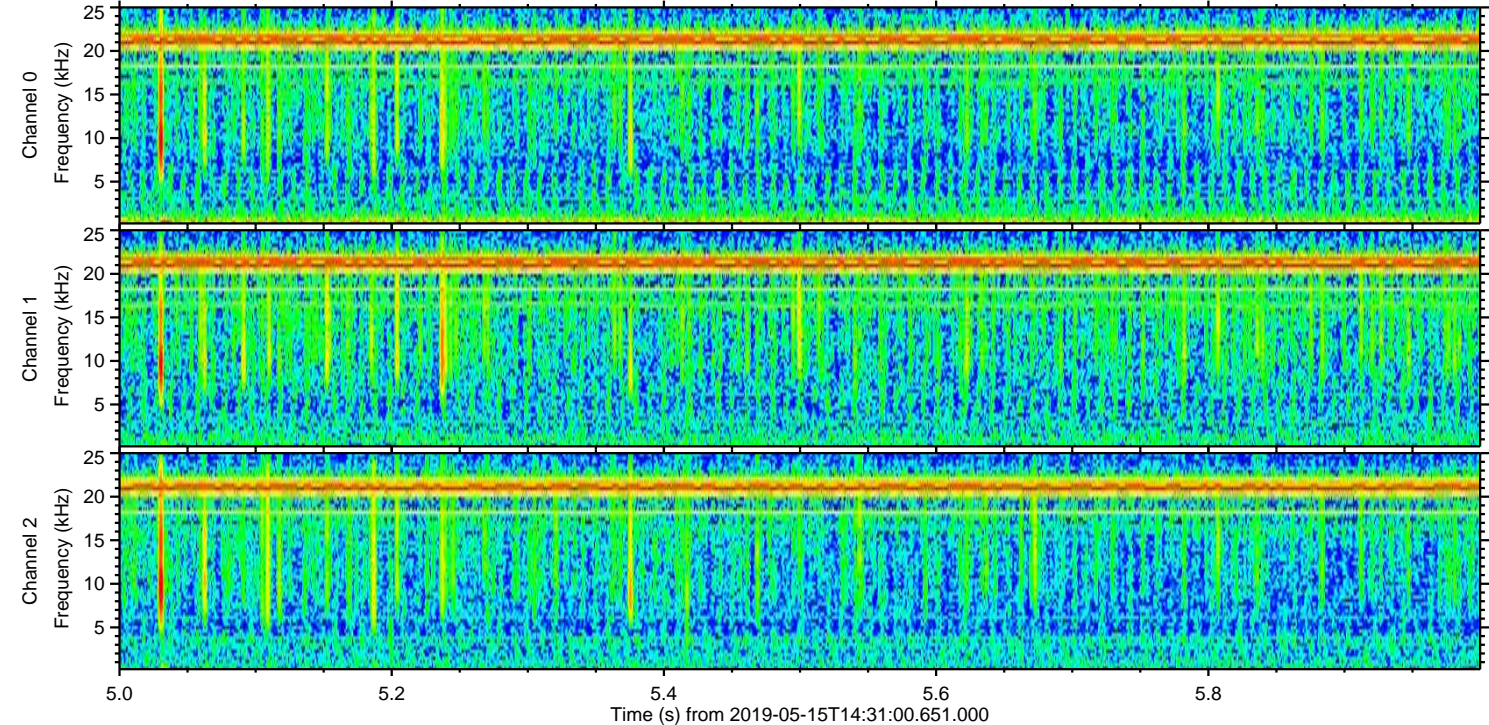
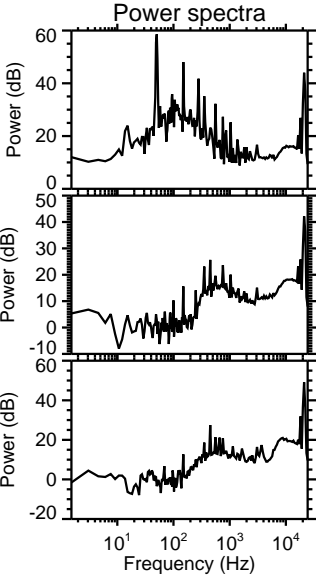
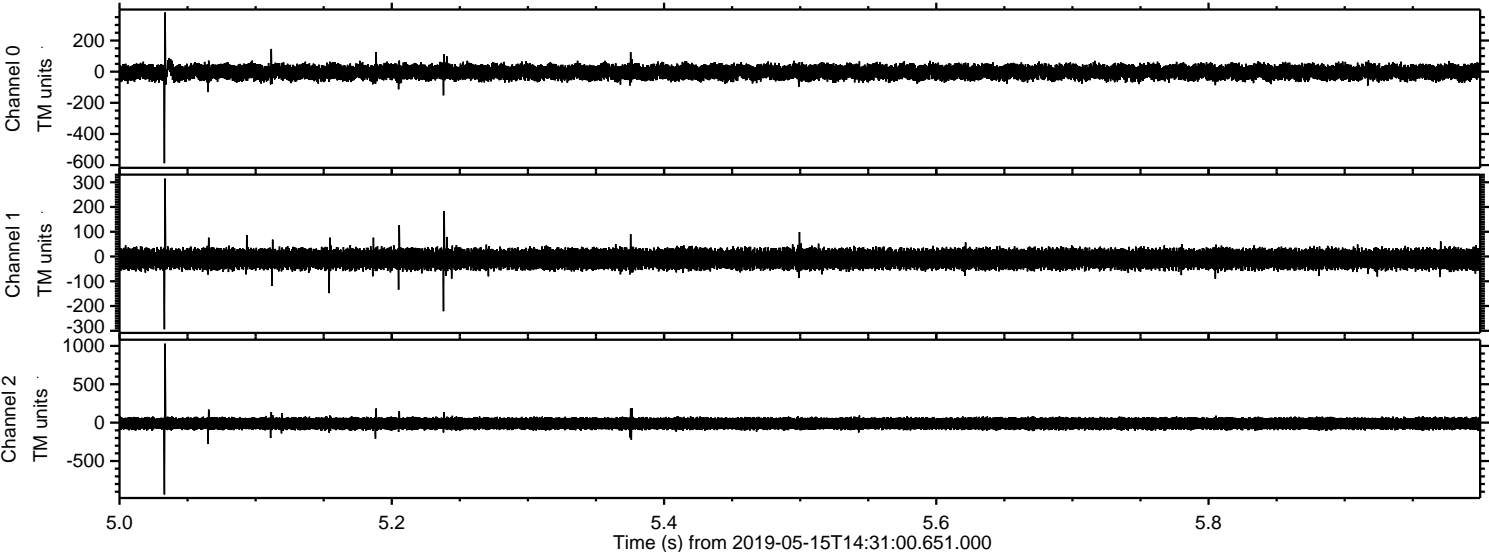
Processed Wed May 15 16:39:03 2019 by ELM ver.2012-10-06 from 001__elm20190515_143059__dat00.bin



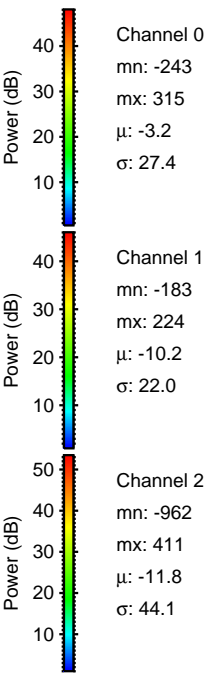
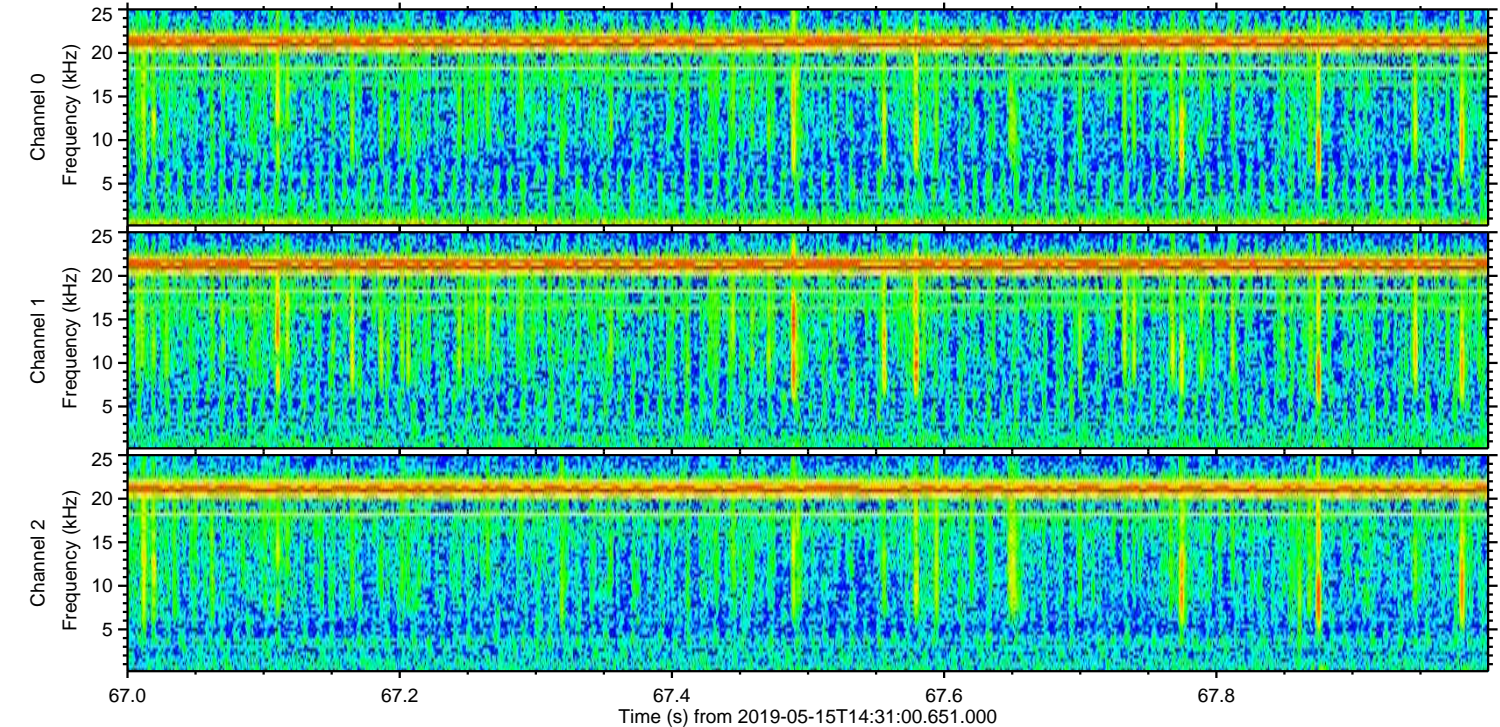
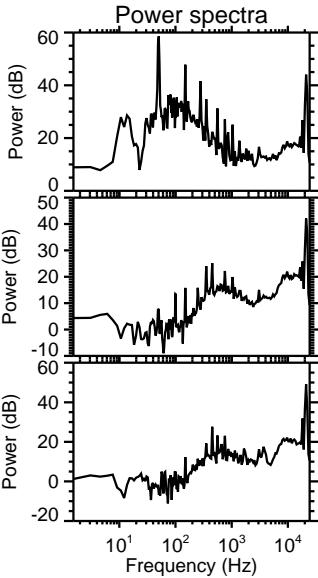
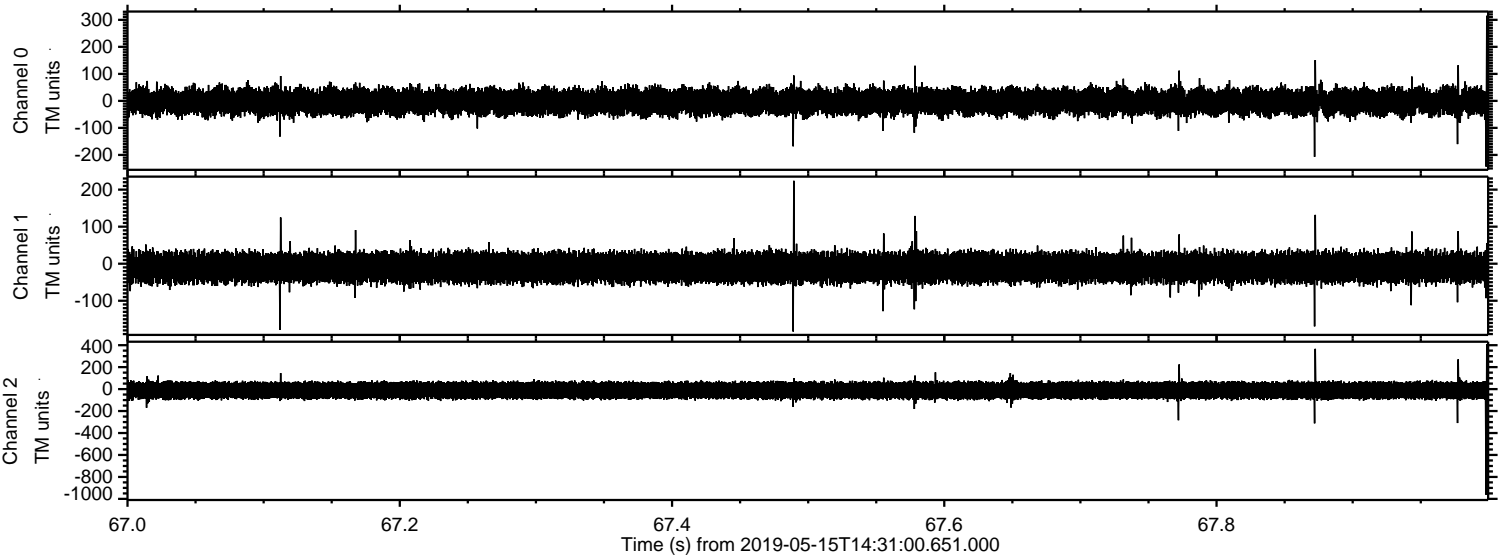
Processed Wed May 15 16:39:04 2019 by ELM ver.2012-10-06 from 001__elm20190515_143059__dat00.bin



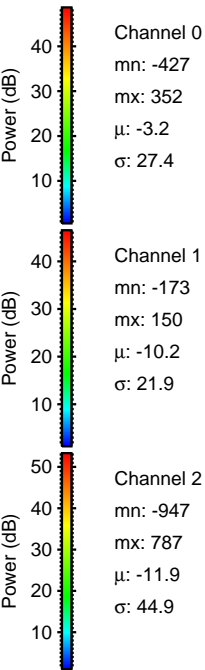
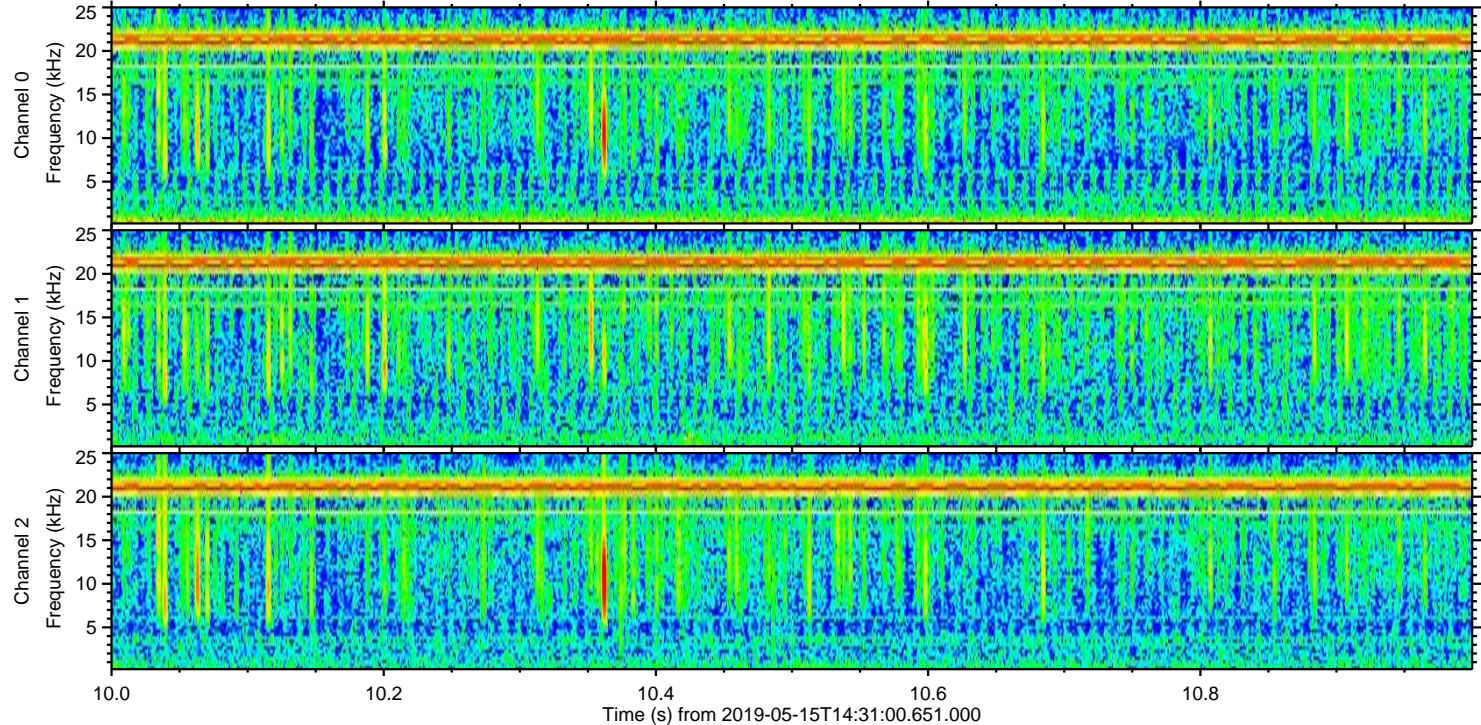
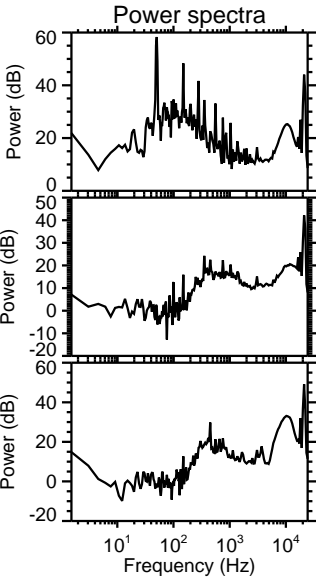
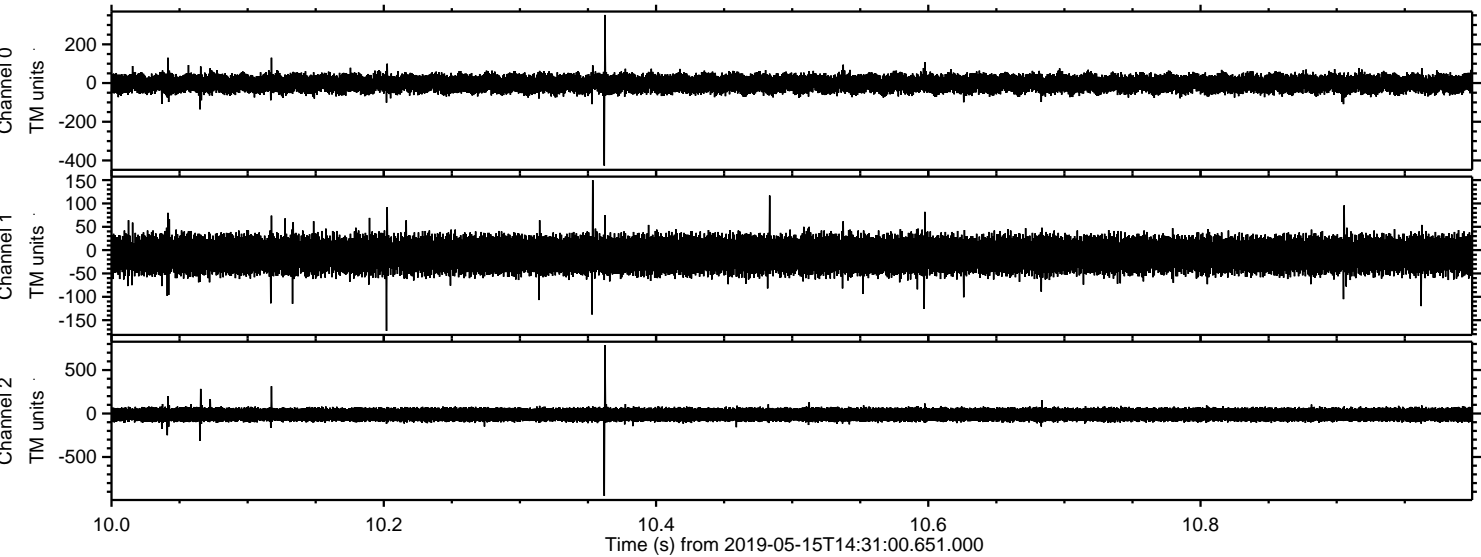
Processed Wed May 15 16:39:04 2019 by ELM ver.2012-10-06 from 001__elm20190515_143059__dat00.bin



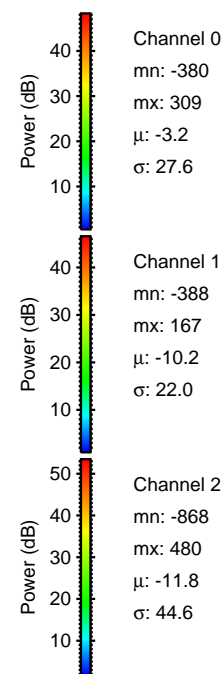
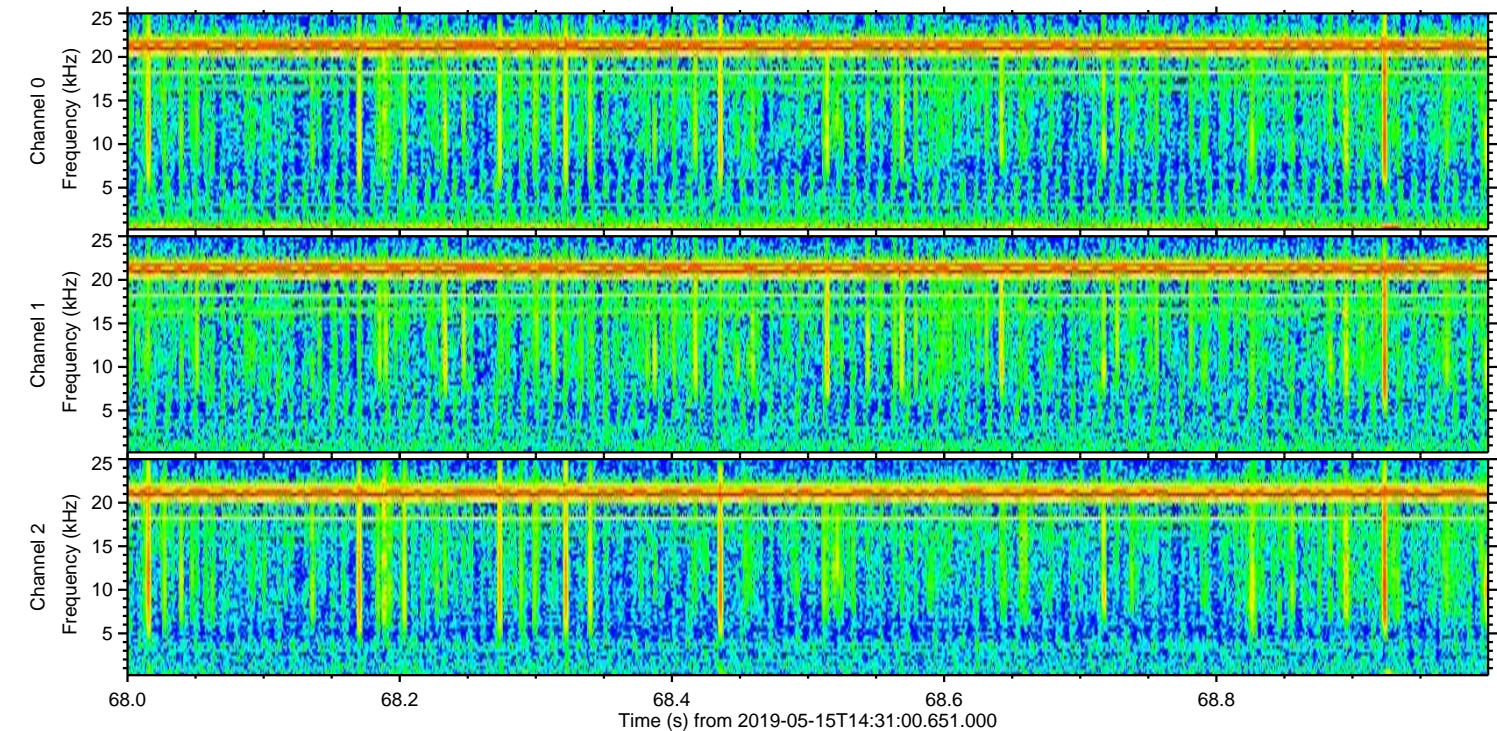
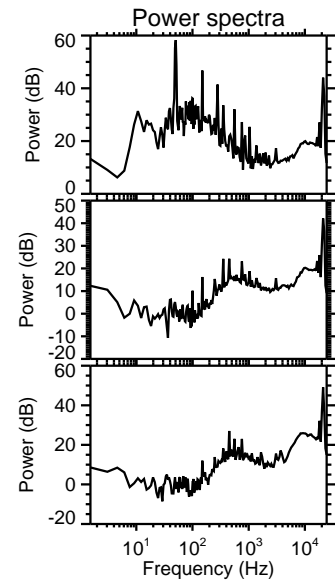
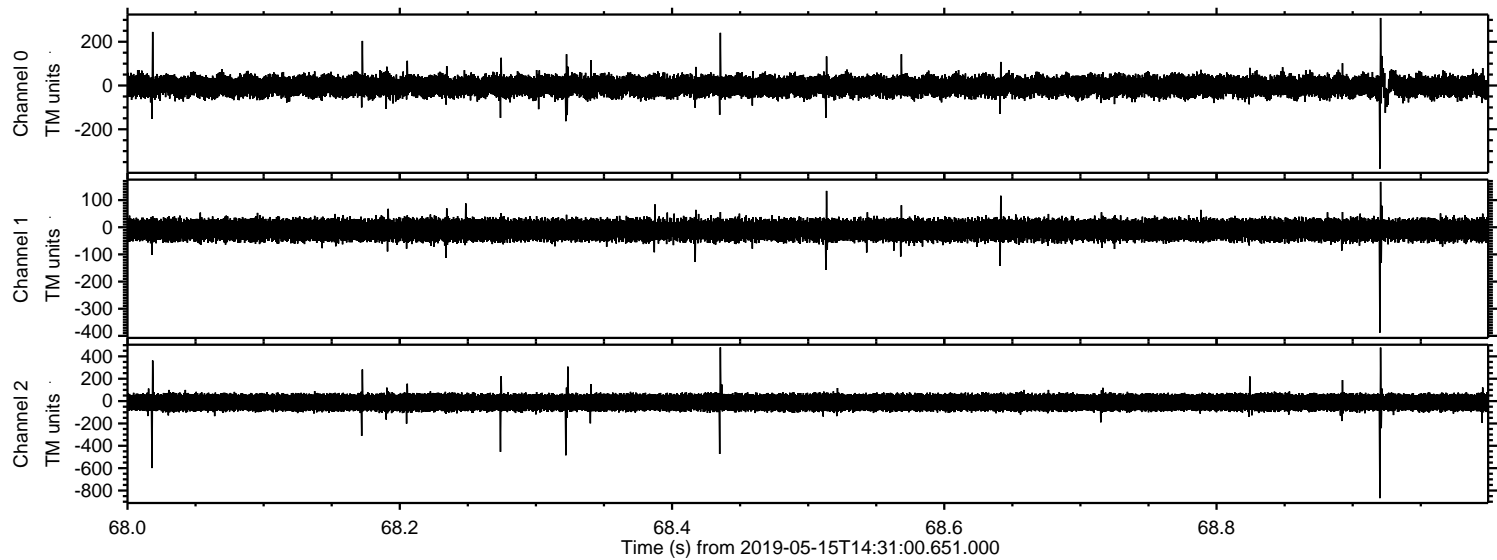
Processed Wed May 15 16:39:05 2019 by ELM ver.2012-10-06 from 001__elm20190515_143059__dat00.bin



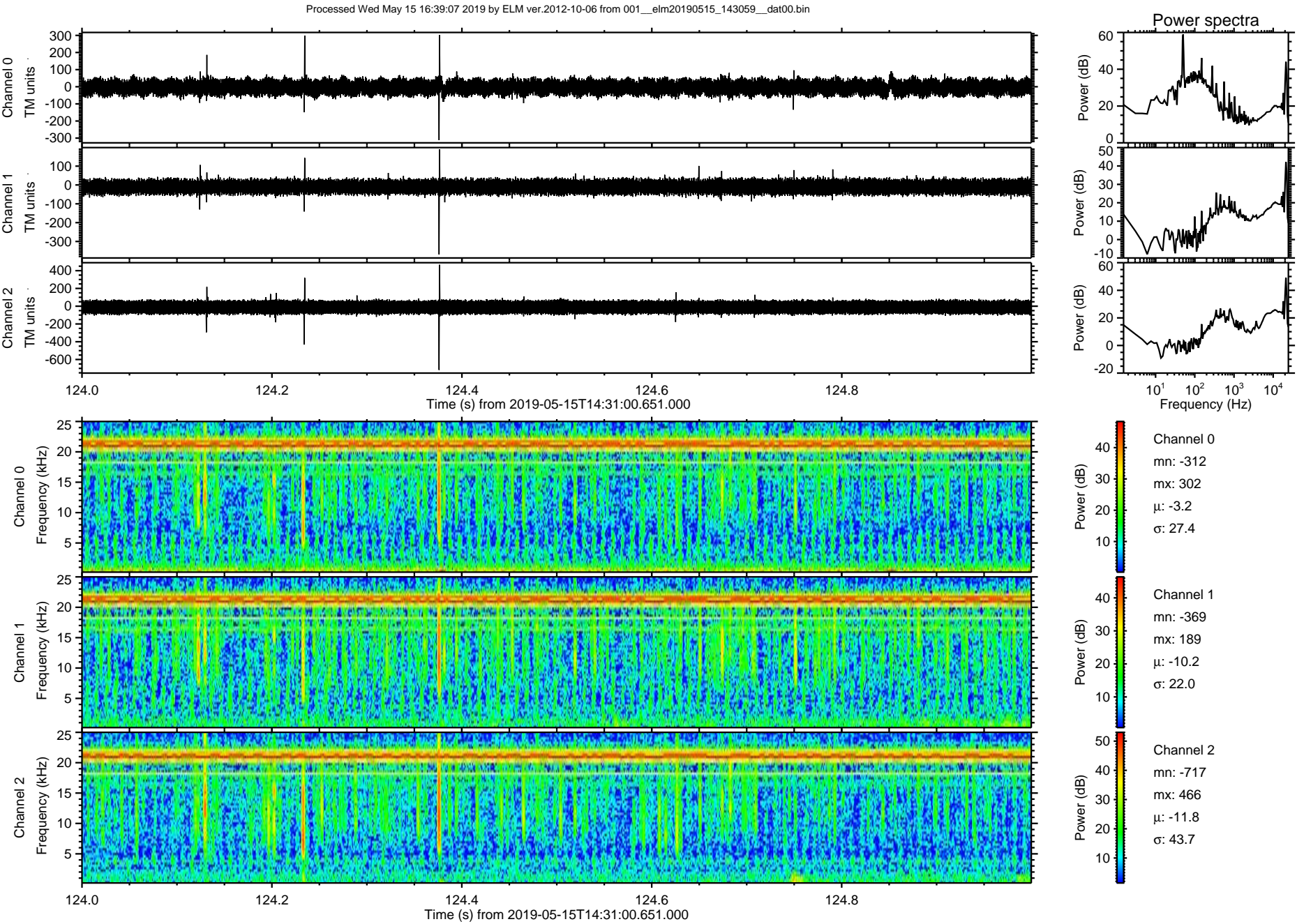
Processed Wed May 15 16:39:05 2019 by ELM ver.2012-10-06 from 001__elm20190515_143059__dat00.bin



Processed Wed May 15 16:39:06 2019 by ELM ver.2012-10-06 from 001__elm20190515_143059__dat00.bin



ELMAVAN 3D WAVEFORMS (Measured data sampled at 50 kHz) 51000 packets of 144 samples from 2019-05-15T14:31:00.651.000. Part 125/147



Processed Wed May 15 16:39:07 2019 by ELM ver.2012-10-06 from 001__elm20190515_143059__dat00.bin

