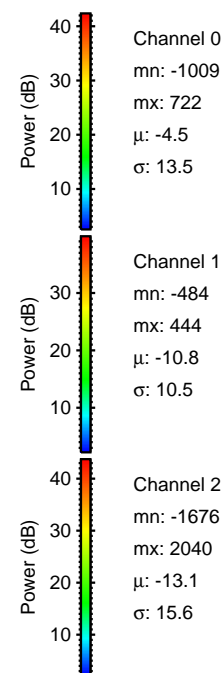
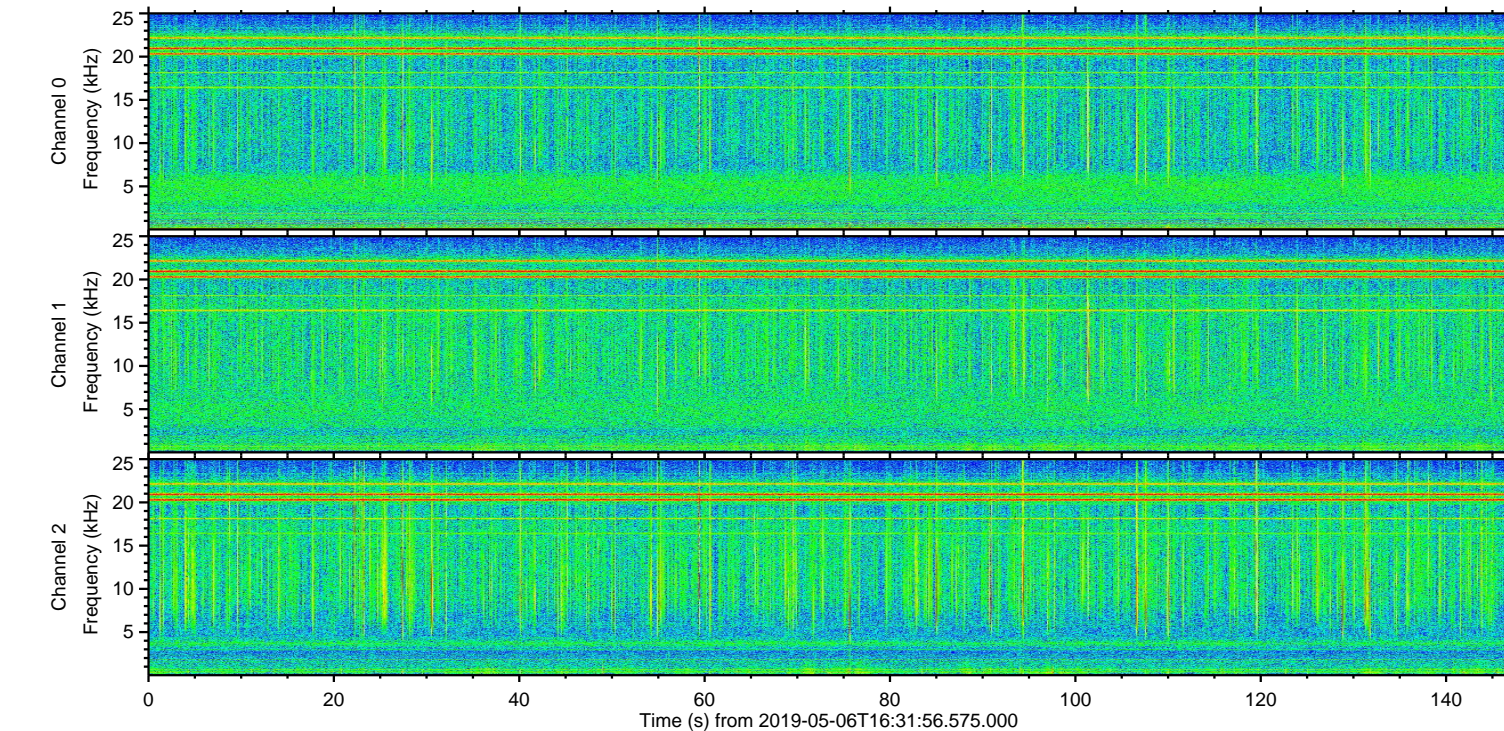
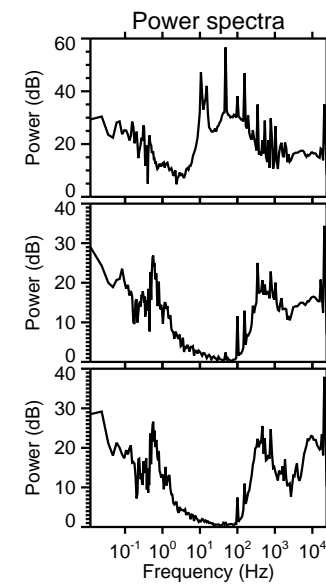
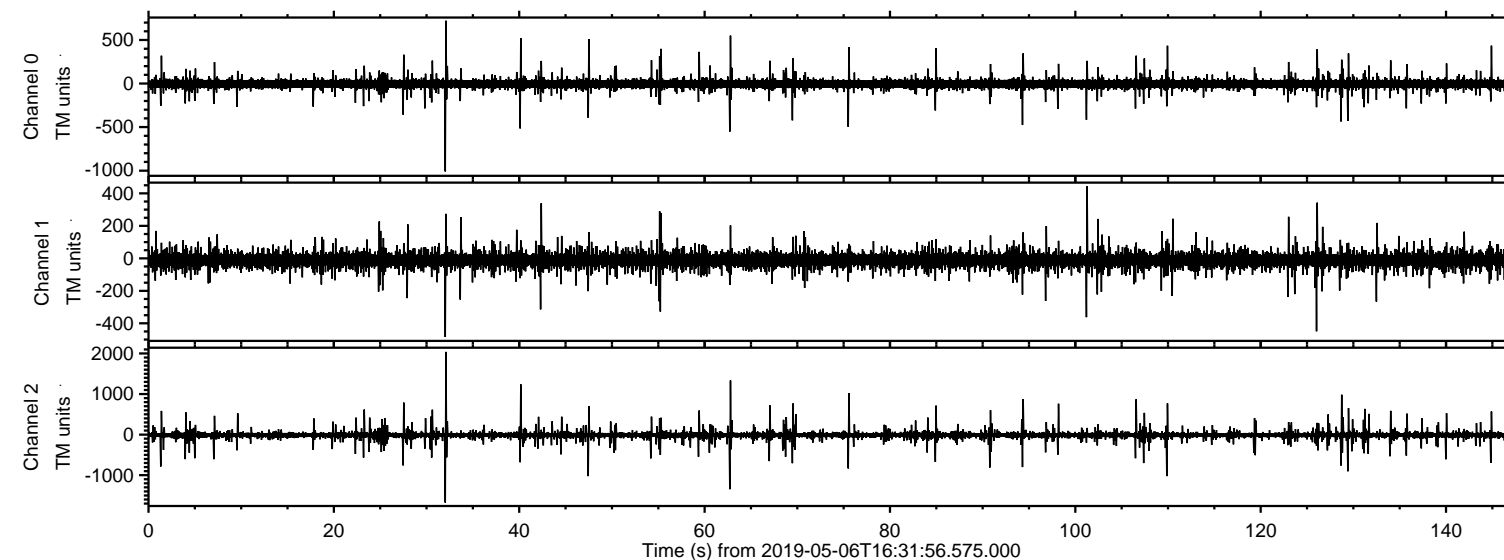


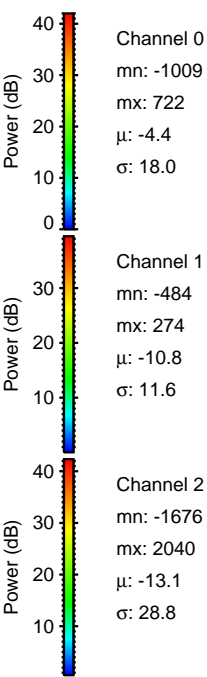
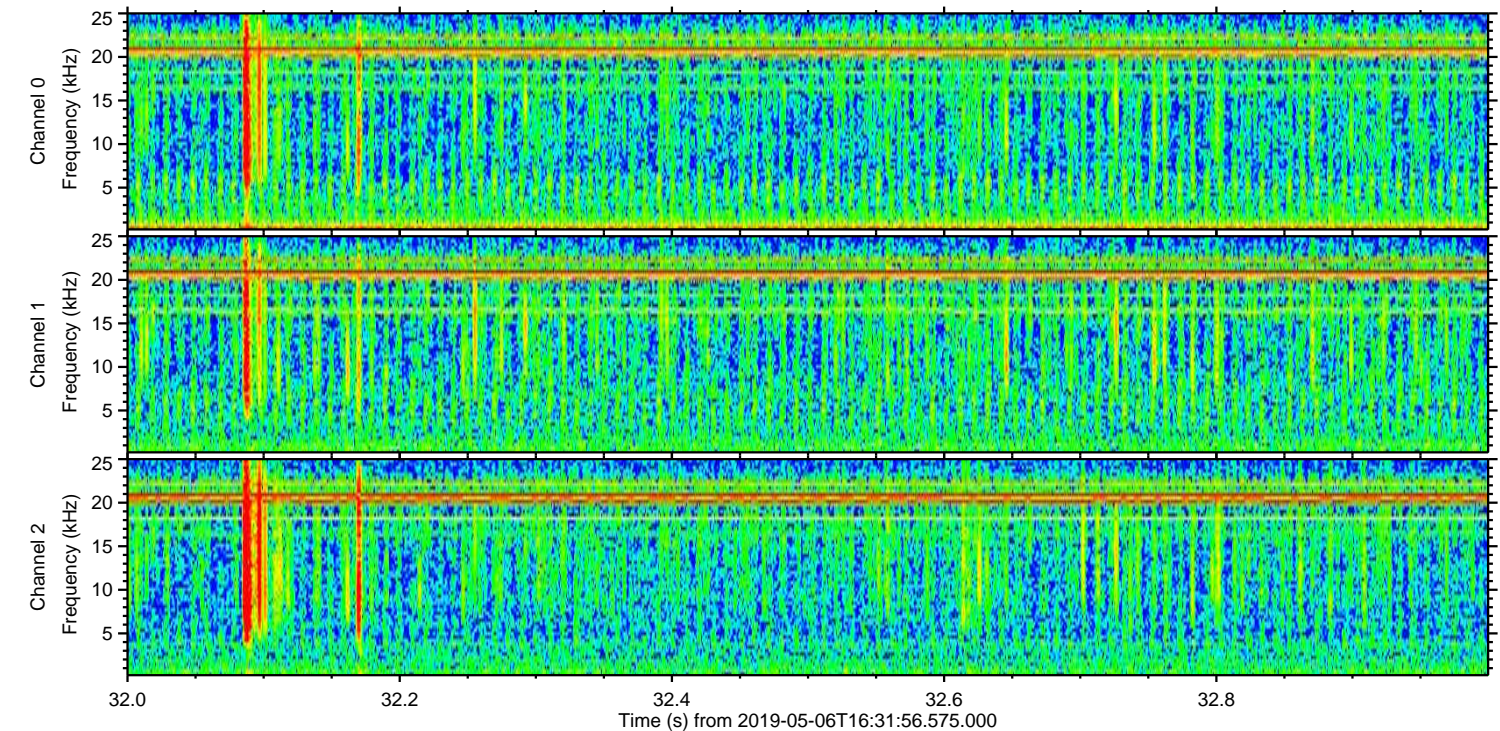
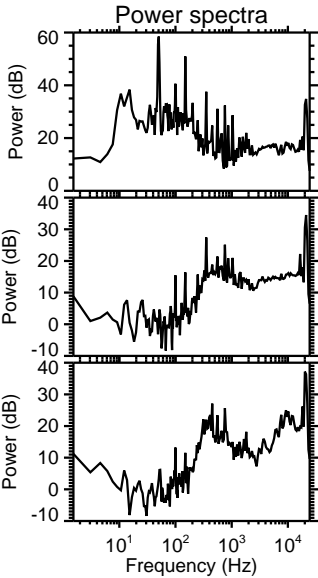
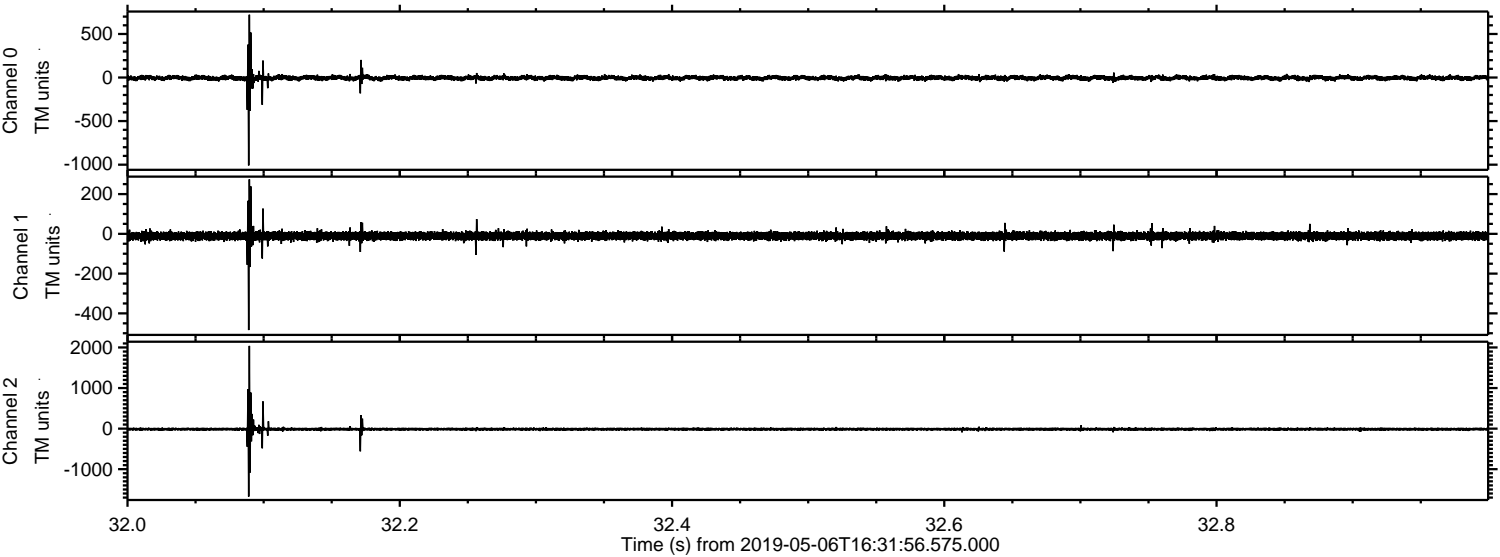
# ELMAVAN 3D WAVEFORMS (Measured data sampled at 50 kHz) 51000 packets of 144 samples from 2019-05-06T16:31:56.575.000.

Processed Mon May 6 18:40:02 2019 by ELM ver.2012-10-06 from 001\_\_elm20190506\_163155\_\_dat00.bin



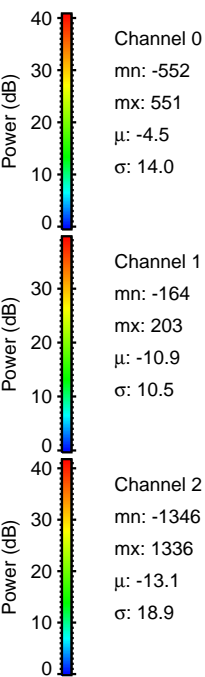
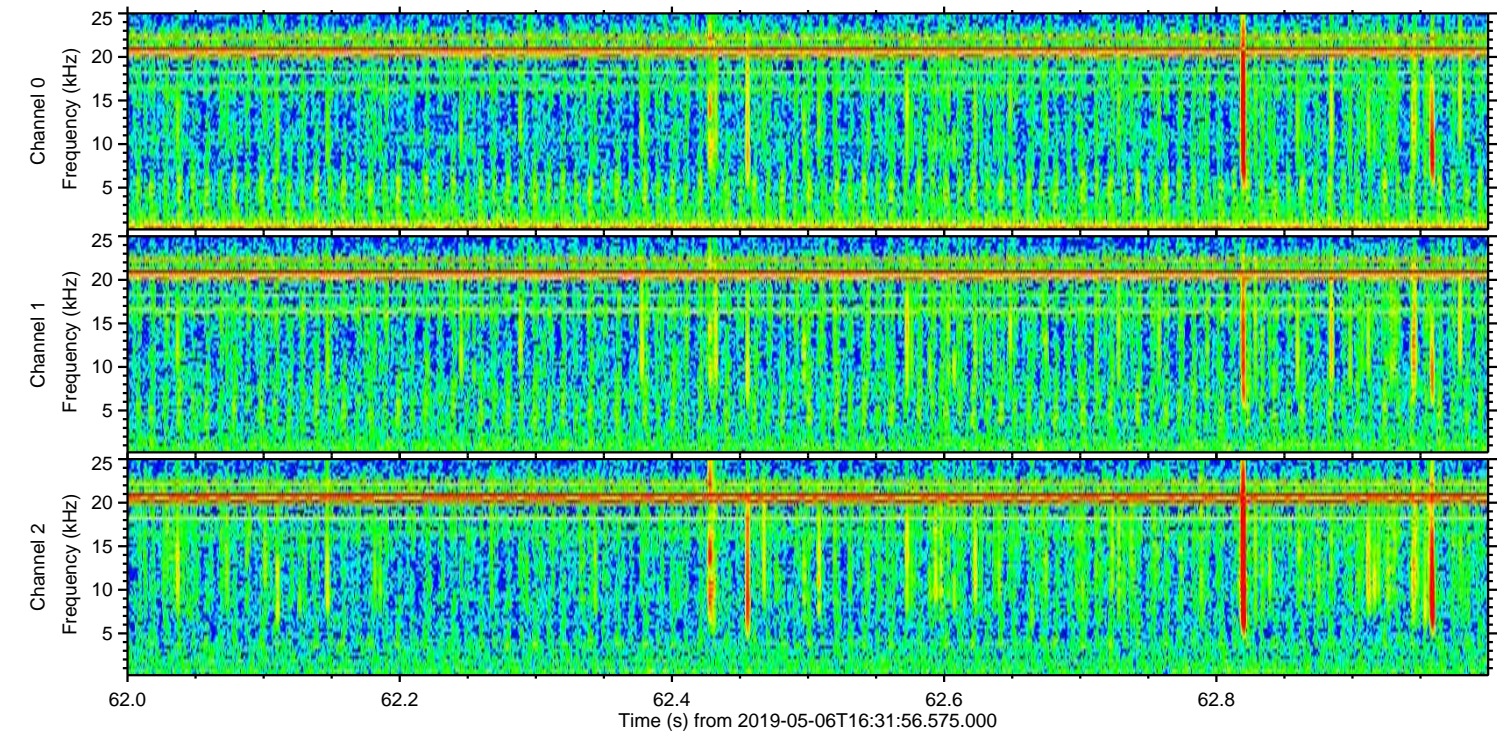
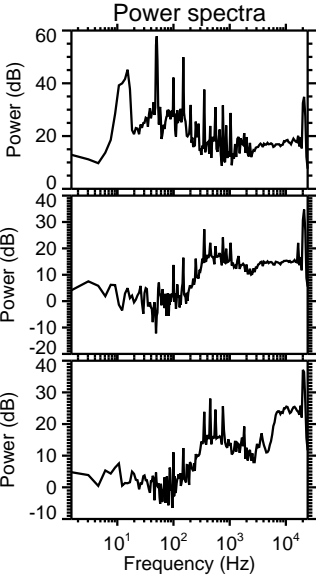
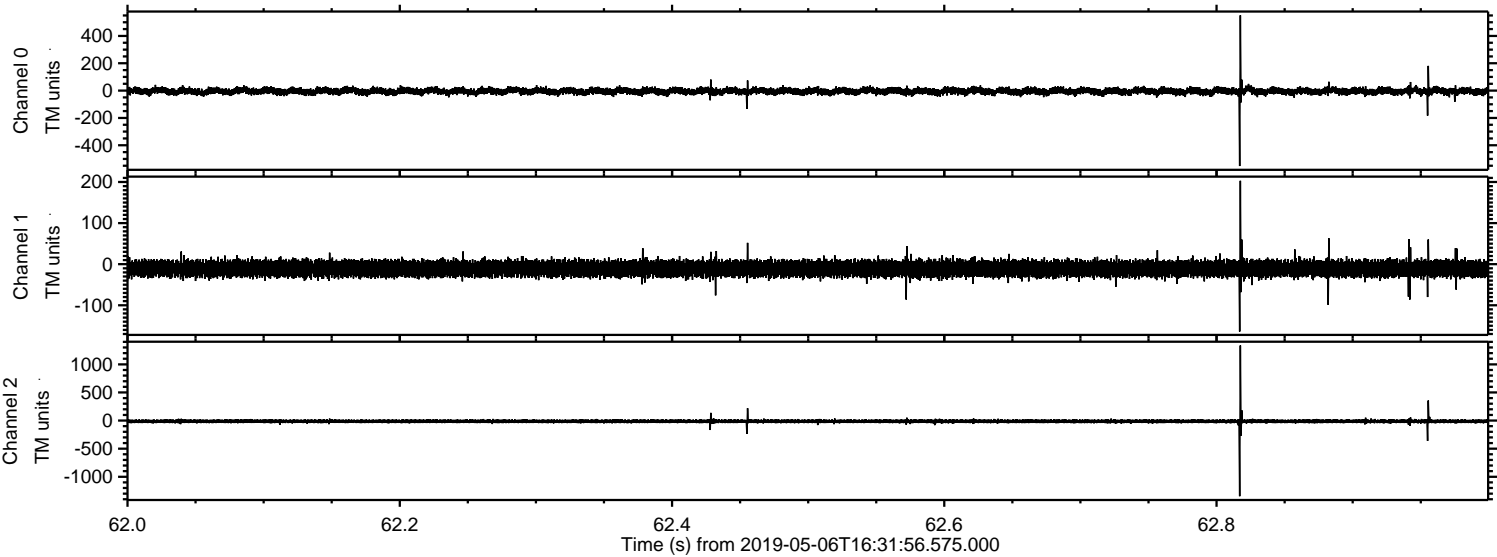


Processed Mon May 6 18:40:08 2019 by ELM ver.2012-10-06 from 001\_\_elm20190506\_163155\_\_dat00.bin



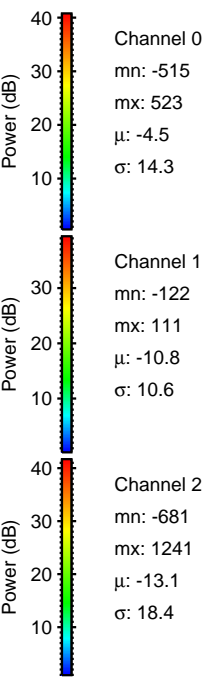
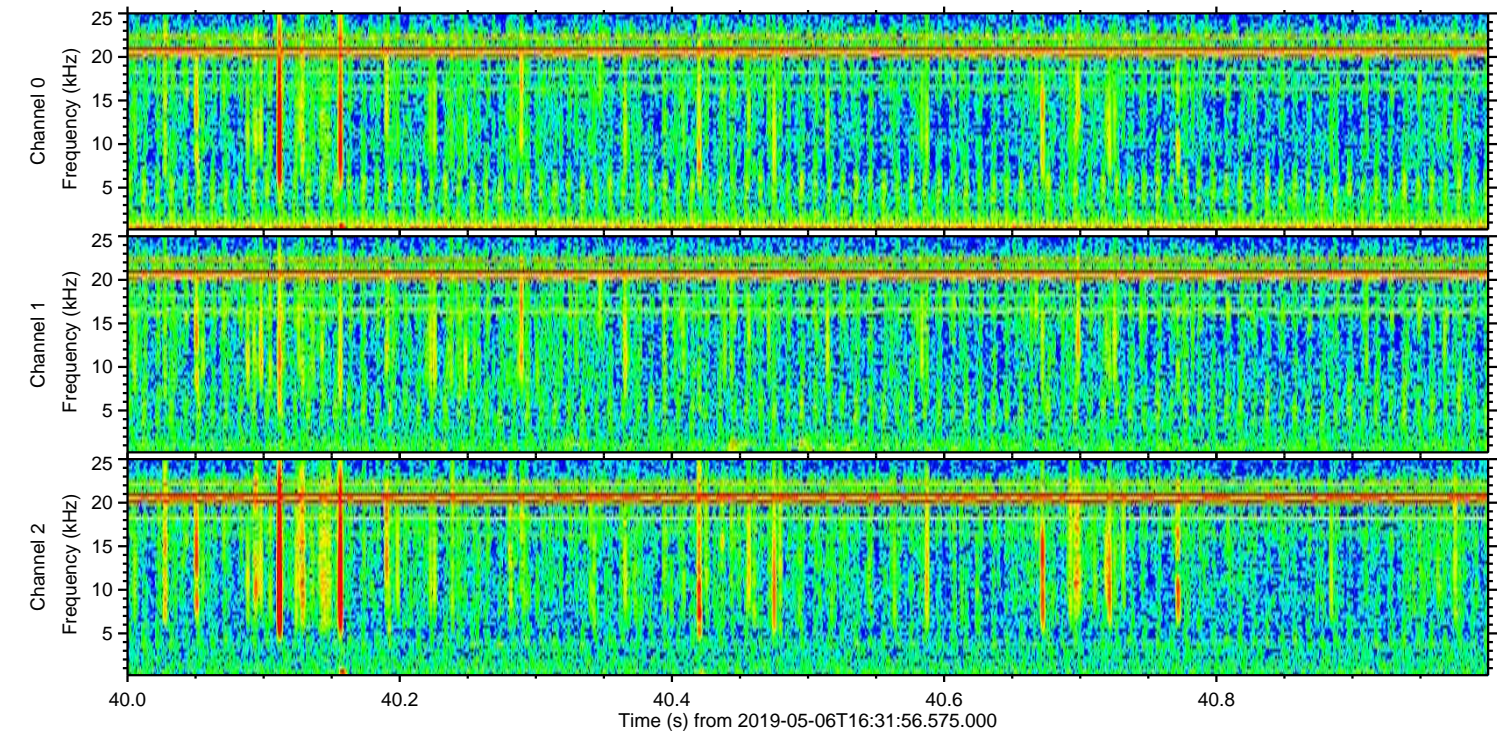
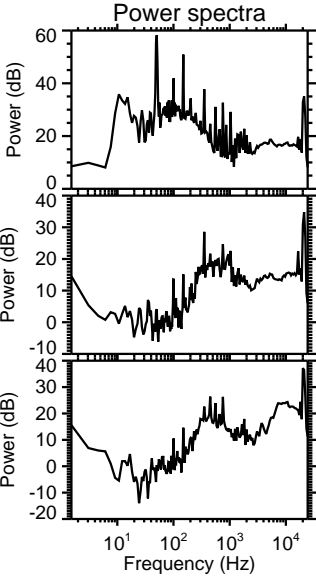
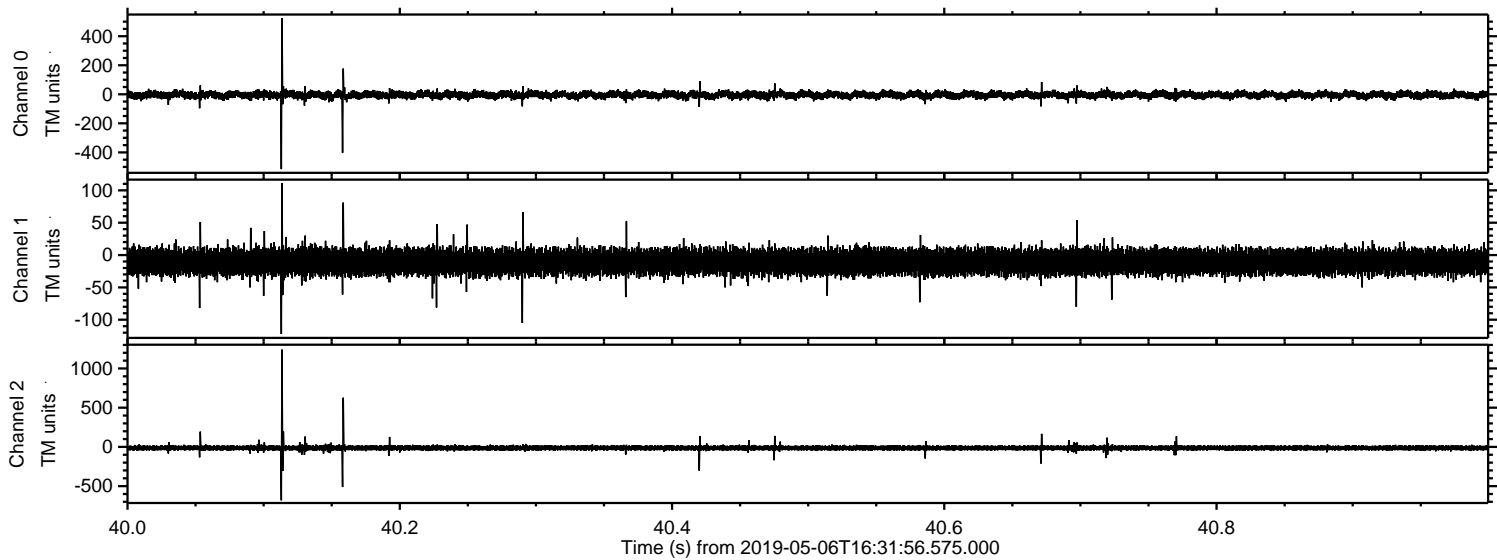


Processed Mon May 6 18:40:09 2019 by ELM ver.2012-10-06 from 001\_\_elm20190506\_163155\_\_dat00.bin



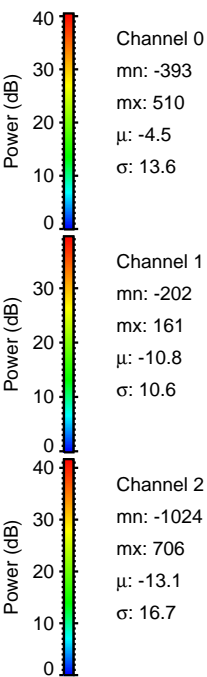
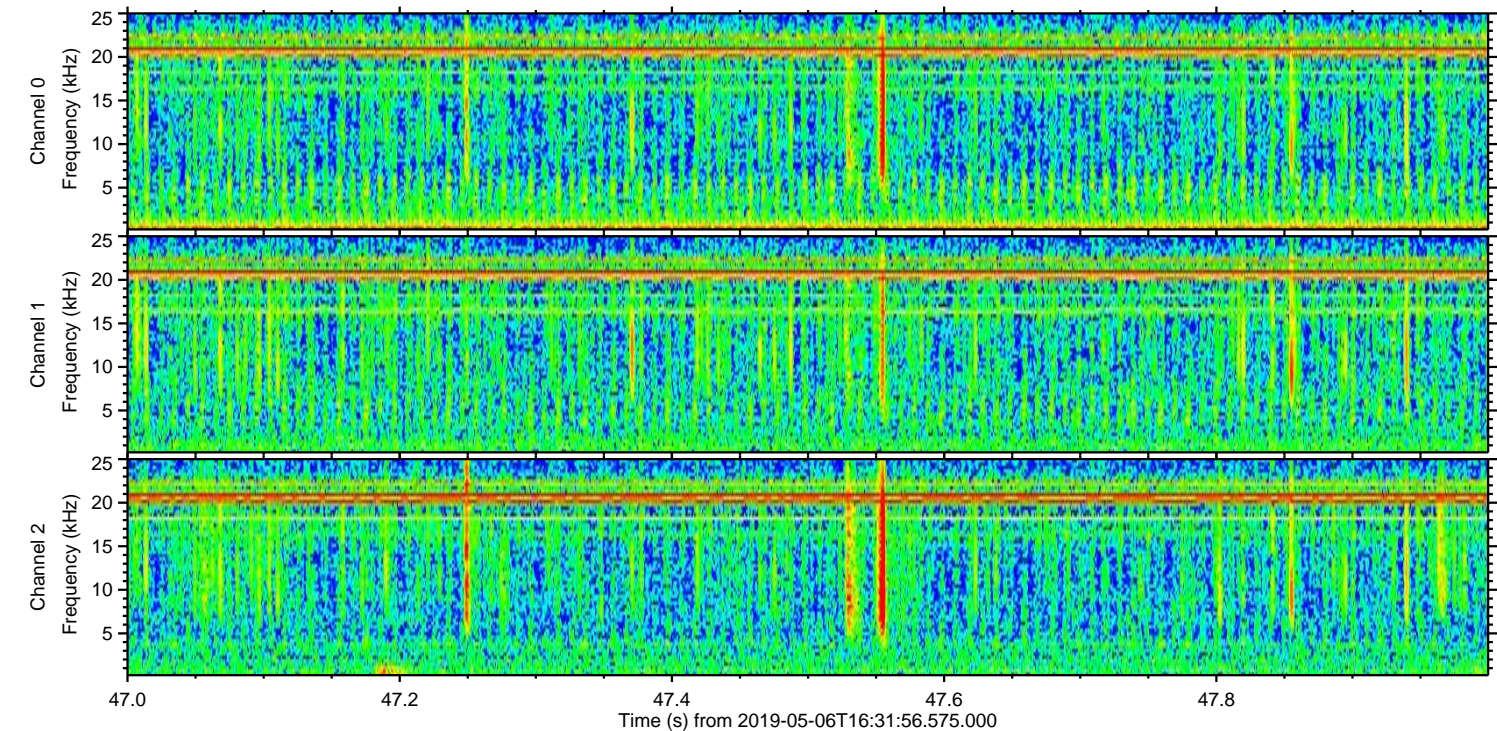
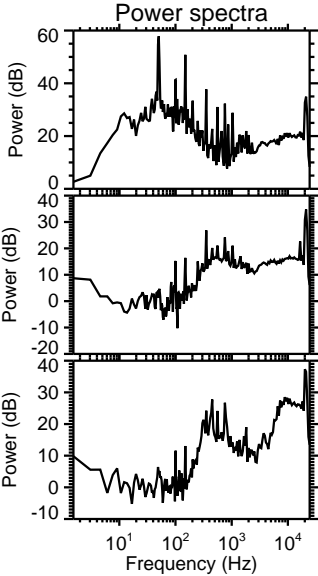
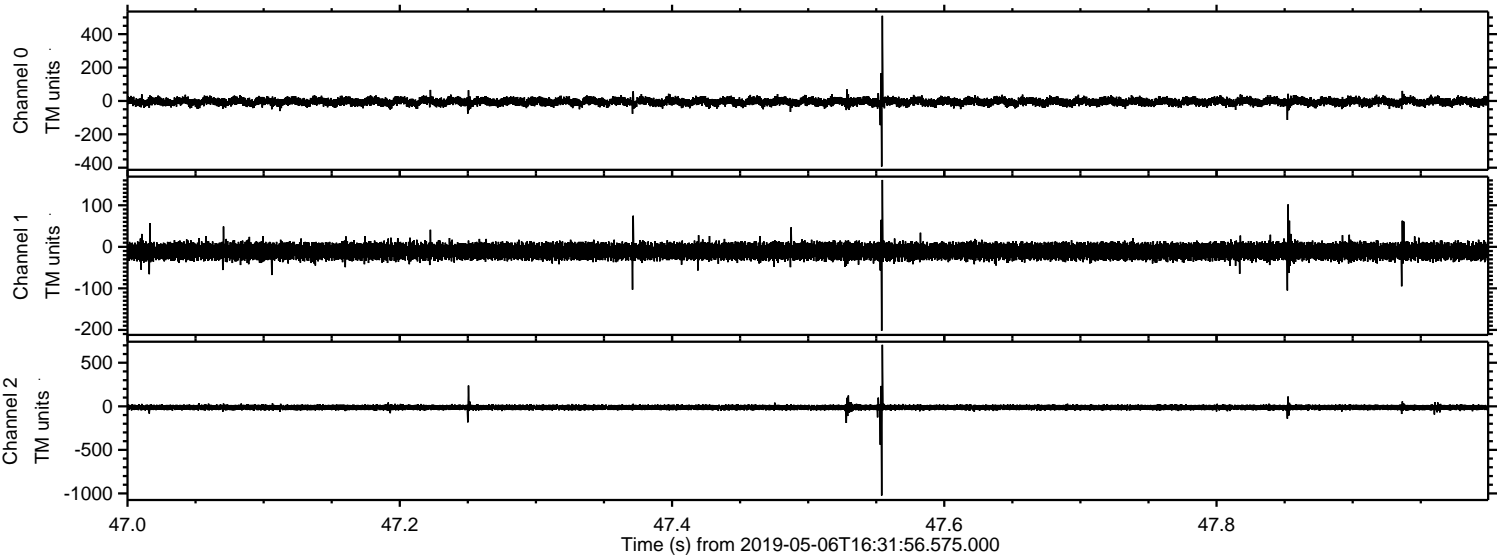


Processed Mon May 6 18:40:09 2019 by ELM ver.2012-10-06 from 001\_\_elm20190506\_163155\_\_dat00.bin





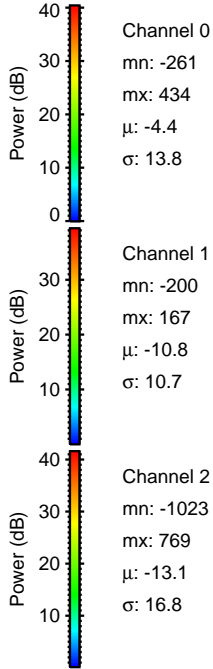
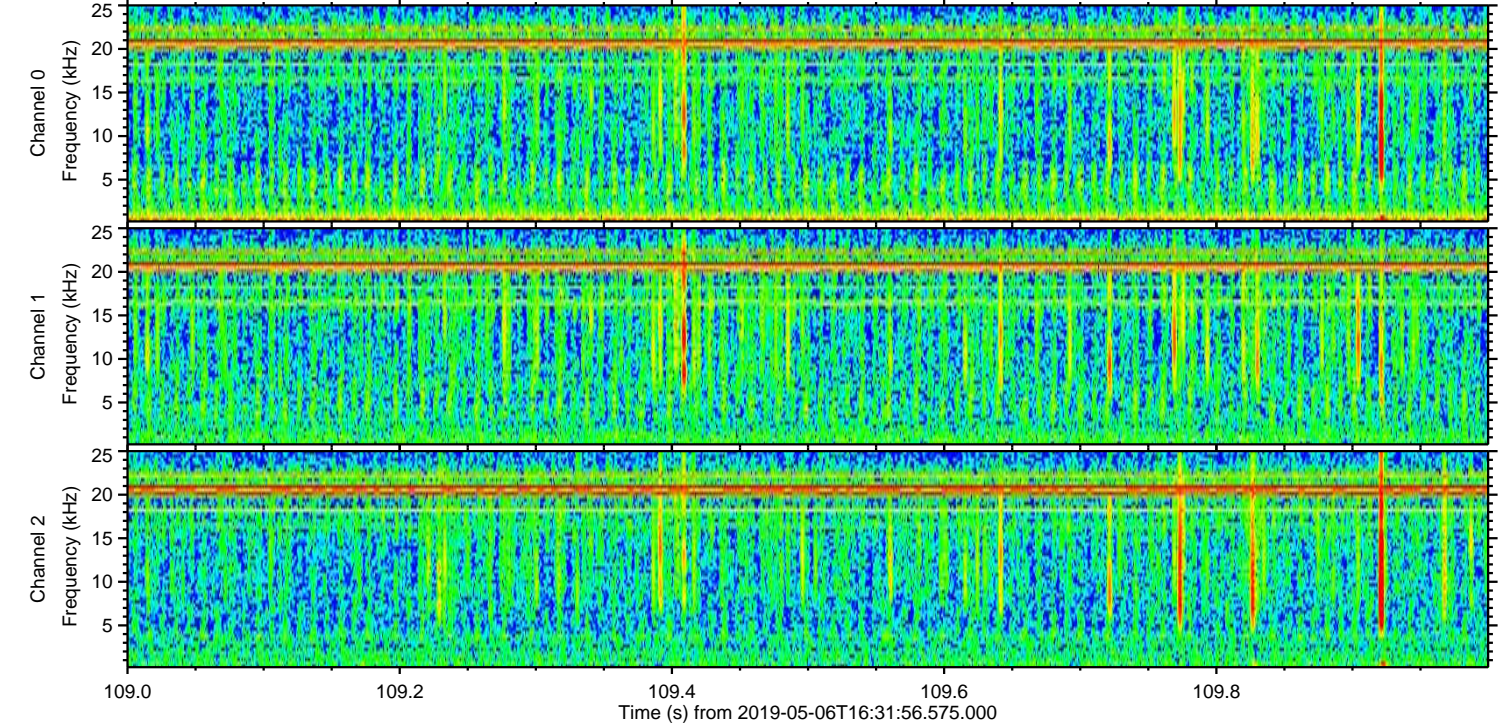
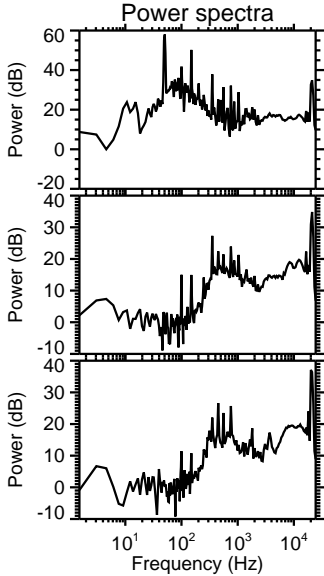
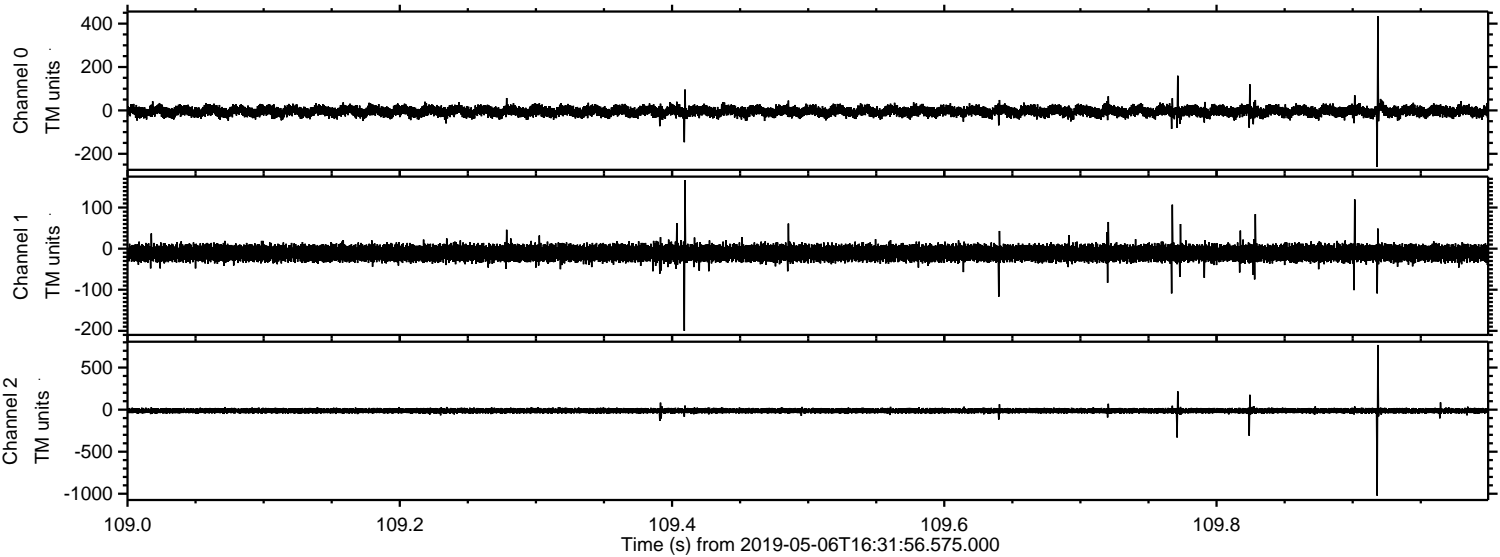
Processed Mon May 6 18:40:10 2019 by ELM ver.2012-10-06 from 001\_\_elm20190506\_163155\_\_dat00.bin





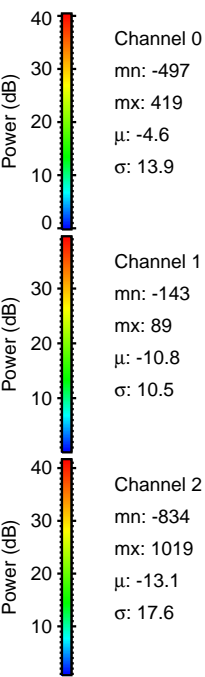
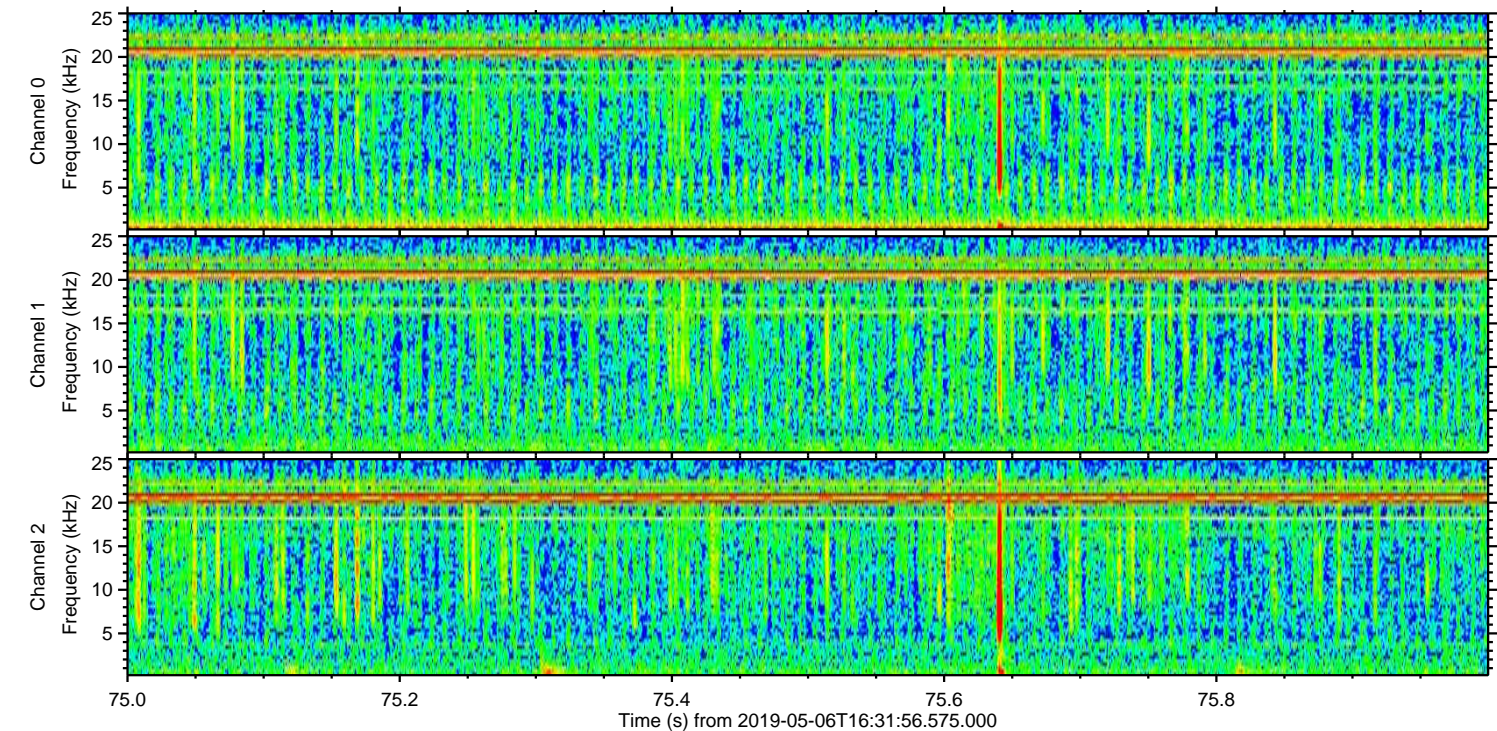
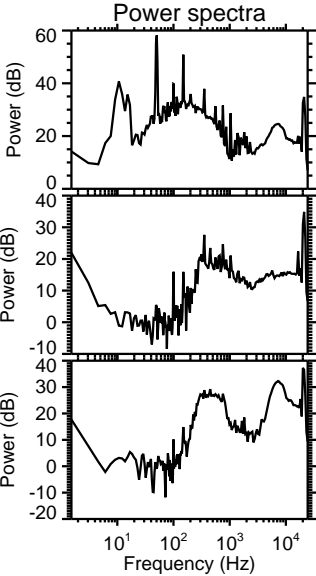
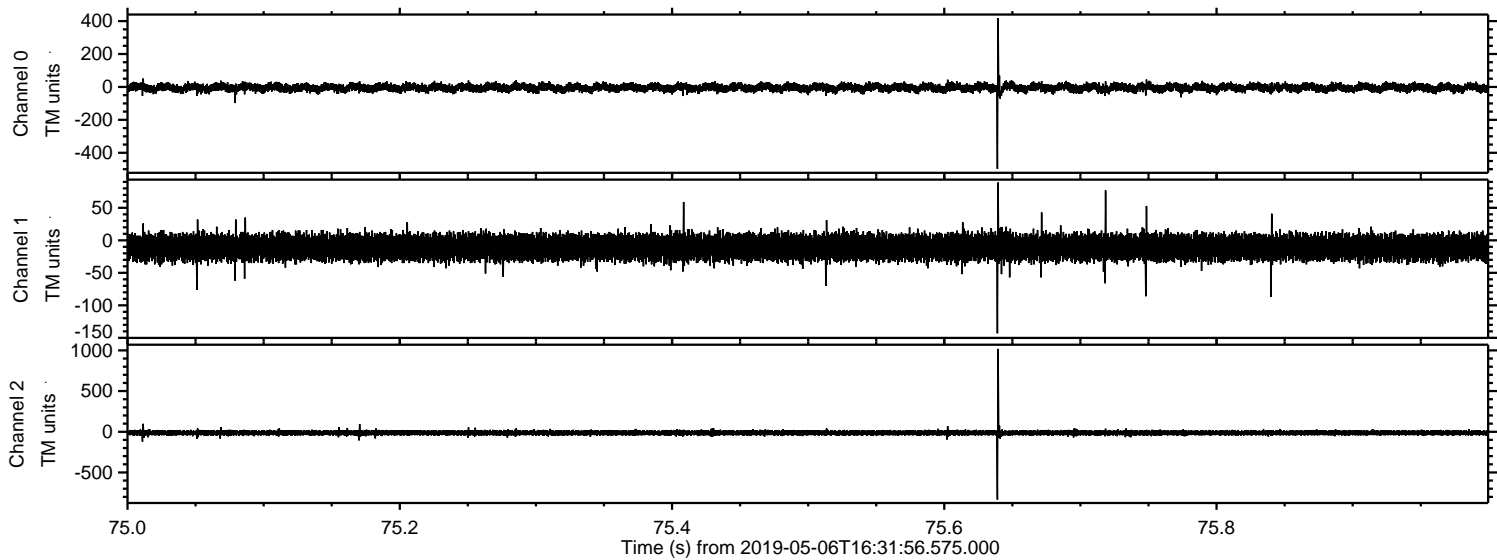
ELMAVAN 3D WAVEFORMS (Measured data sampled at 50 kHz) 51000 packets of 144 samples from 2019-05-06T16:31:56.575.000. Part 110/147

Processed Mon May 6 18:40:11 2019 by ELM ver.2012-10-06 from 001\_\_elm20190506\_163155\_\_dat00.bin



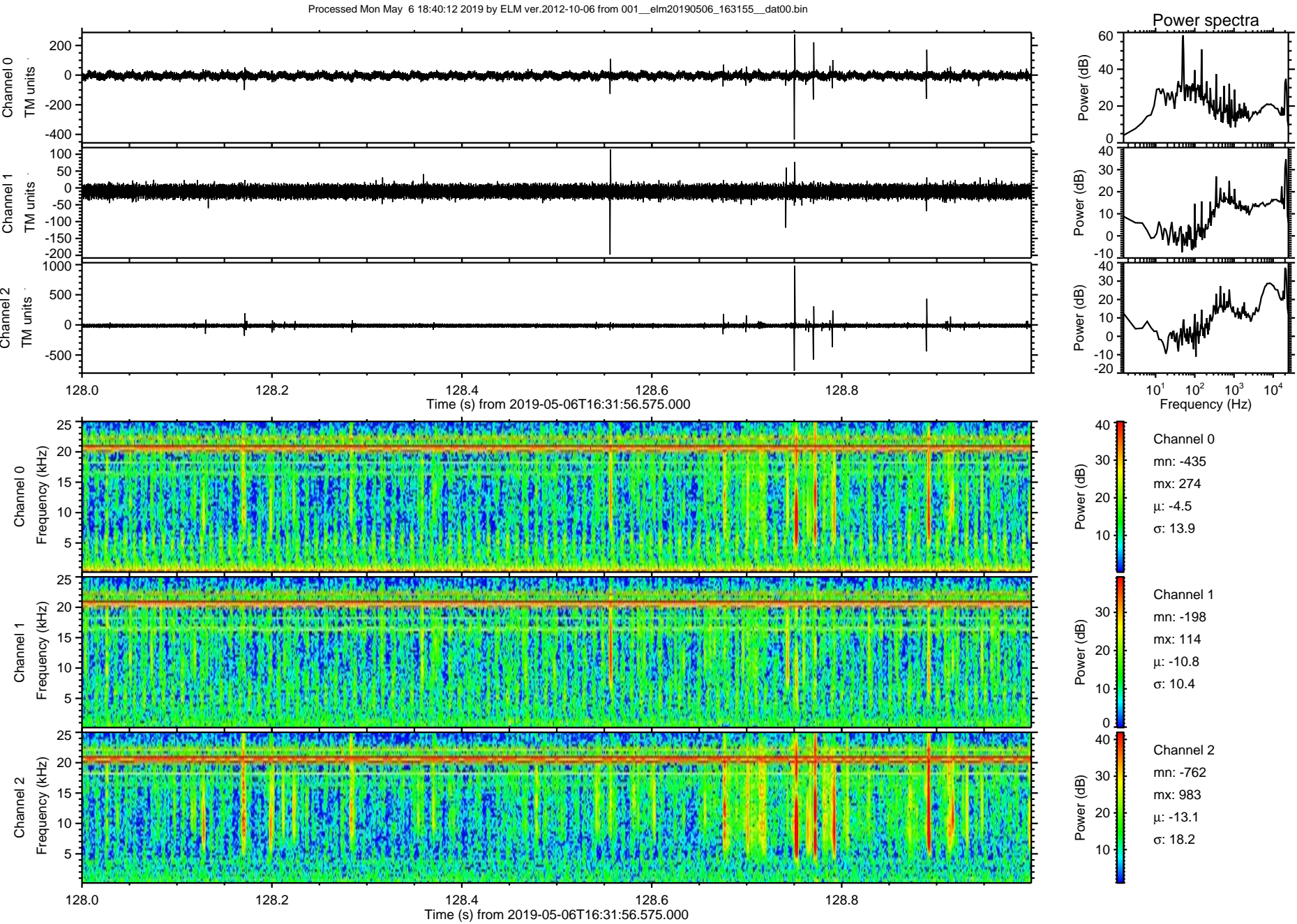


Processed Mon May 6 18:40:11 2019 by ELM ver.2012-10-06 from 001\_\_elm20190506\_163155\_\_dat00.bin



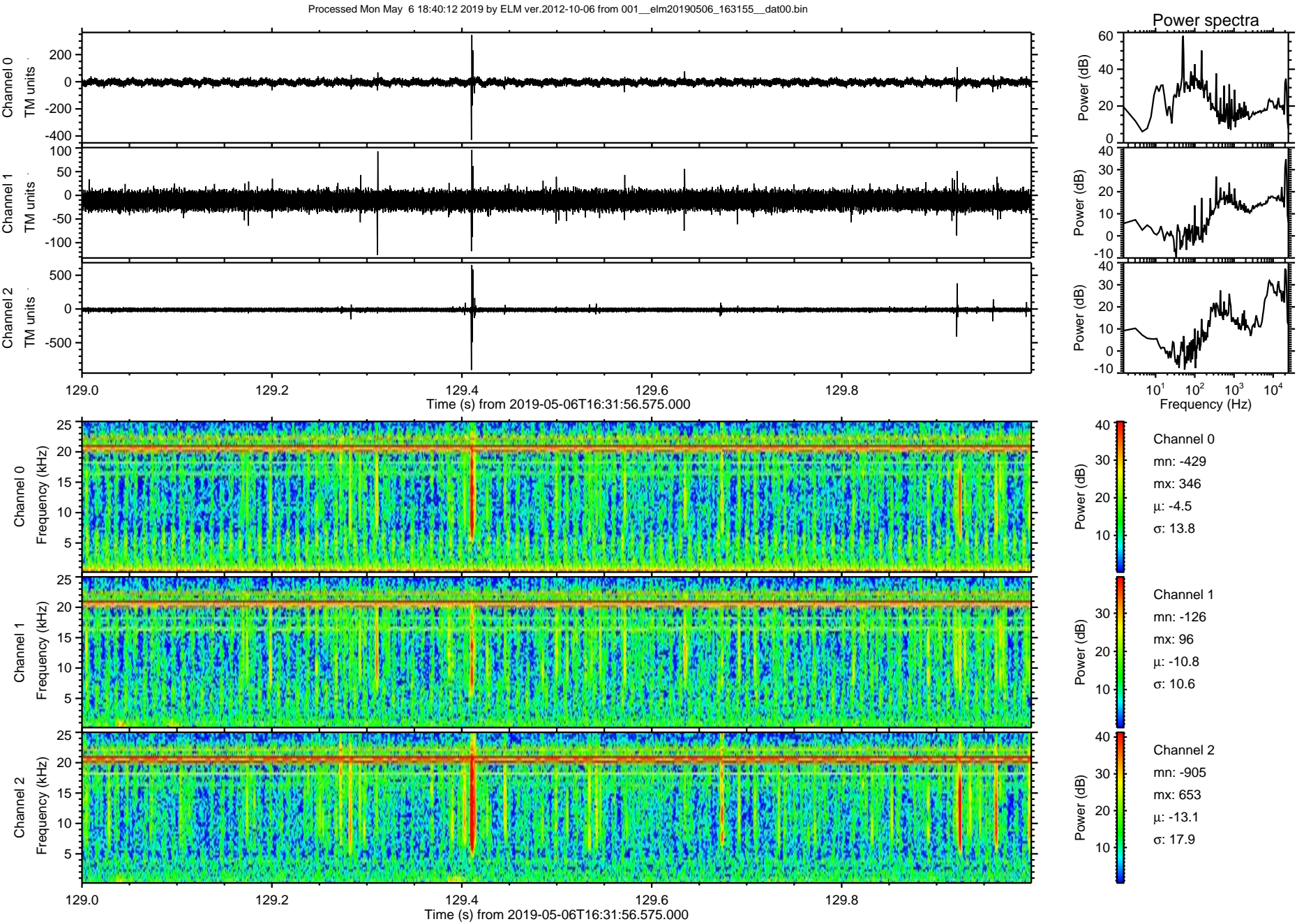


ELMAVAN 3D WAVEFORMS (Measured data sampled at 50 kHz) 51000 packets of 144 samples from 2019-05-06T16:31:56.575.000. Part 129/147



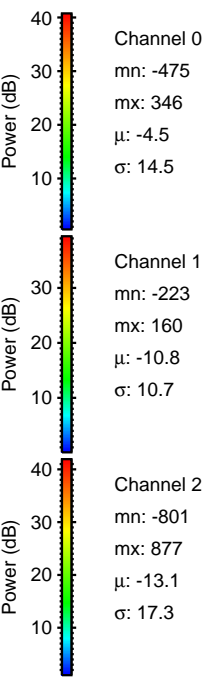
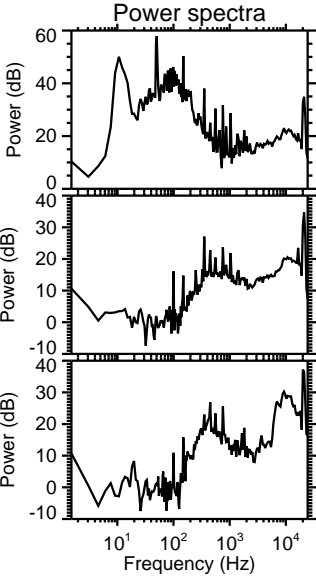
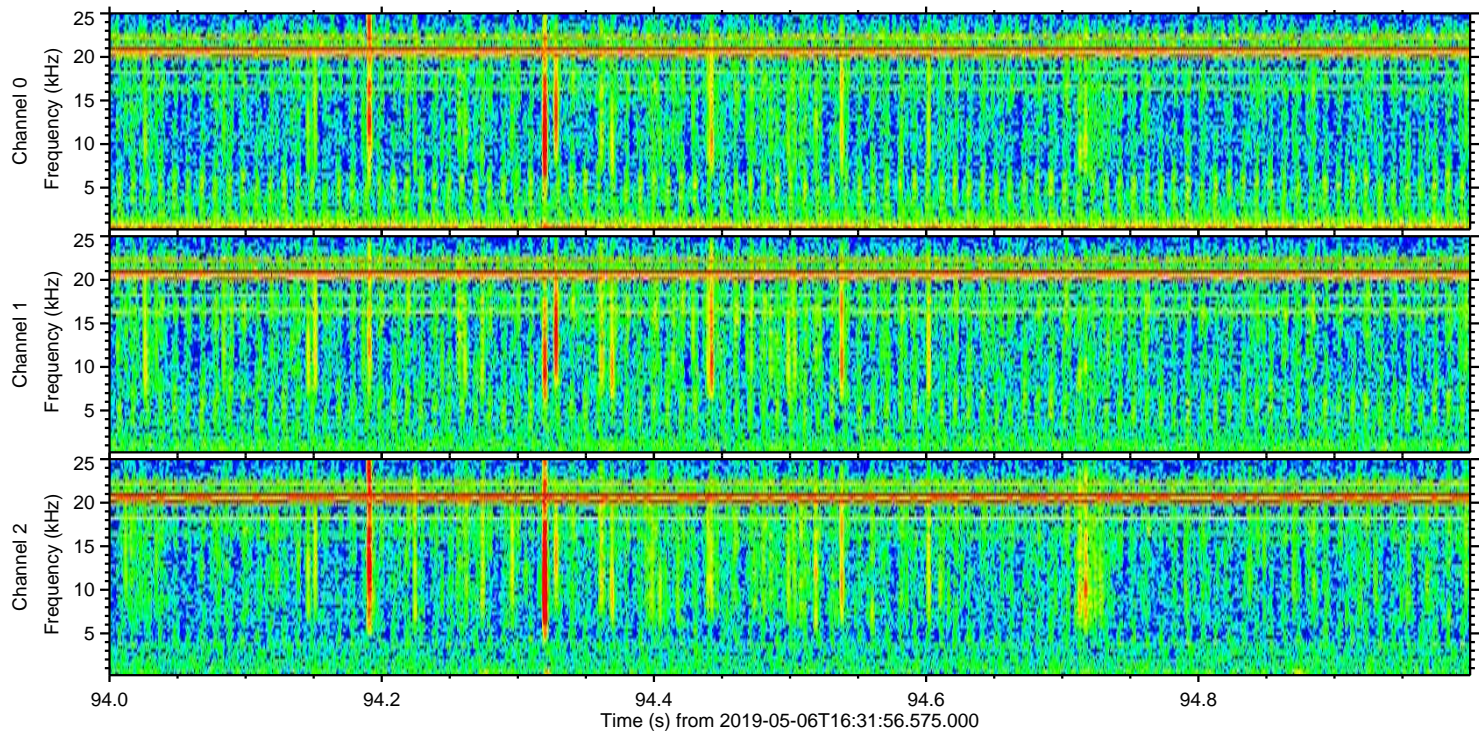
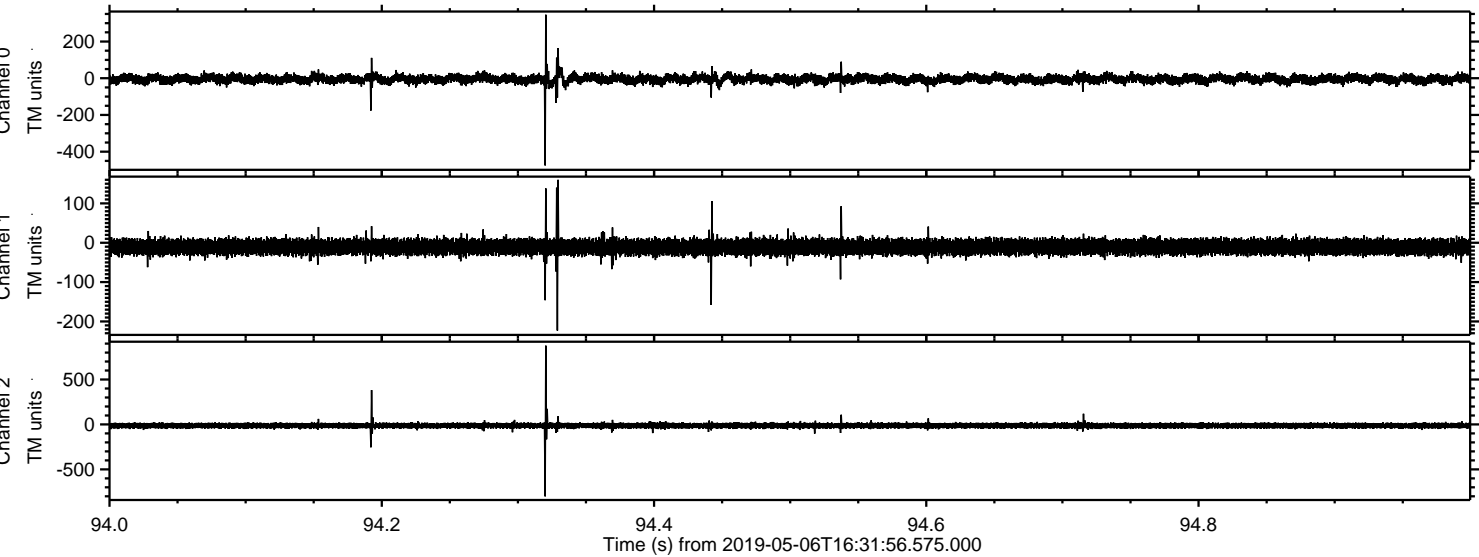


ELMAVAN 3D WAVEFORMS (Measured data sampled at 50 kHz) 51000 packets of 144 samples from 2019-05-06T16:31:56.575.000. Part 130/147





Processed Mon May 6 18:40:13 2019 by ELM ver.2012-10-06 from 001\_\_elm20190506\_163155\_\_dat00.bin





Processed Mon May 6 18:40:14 2019 by ELM ver.2012-10-06 from 001\_\_elm20190506\_163155\_\_dat00.bin

