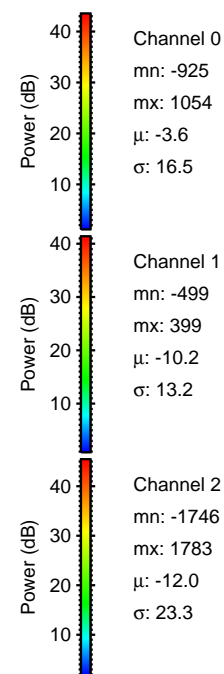
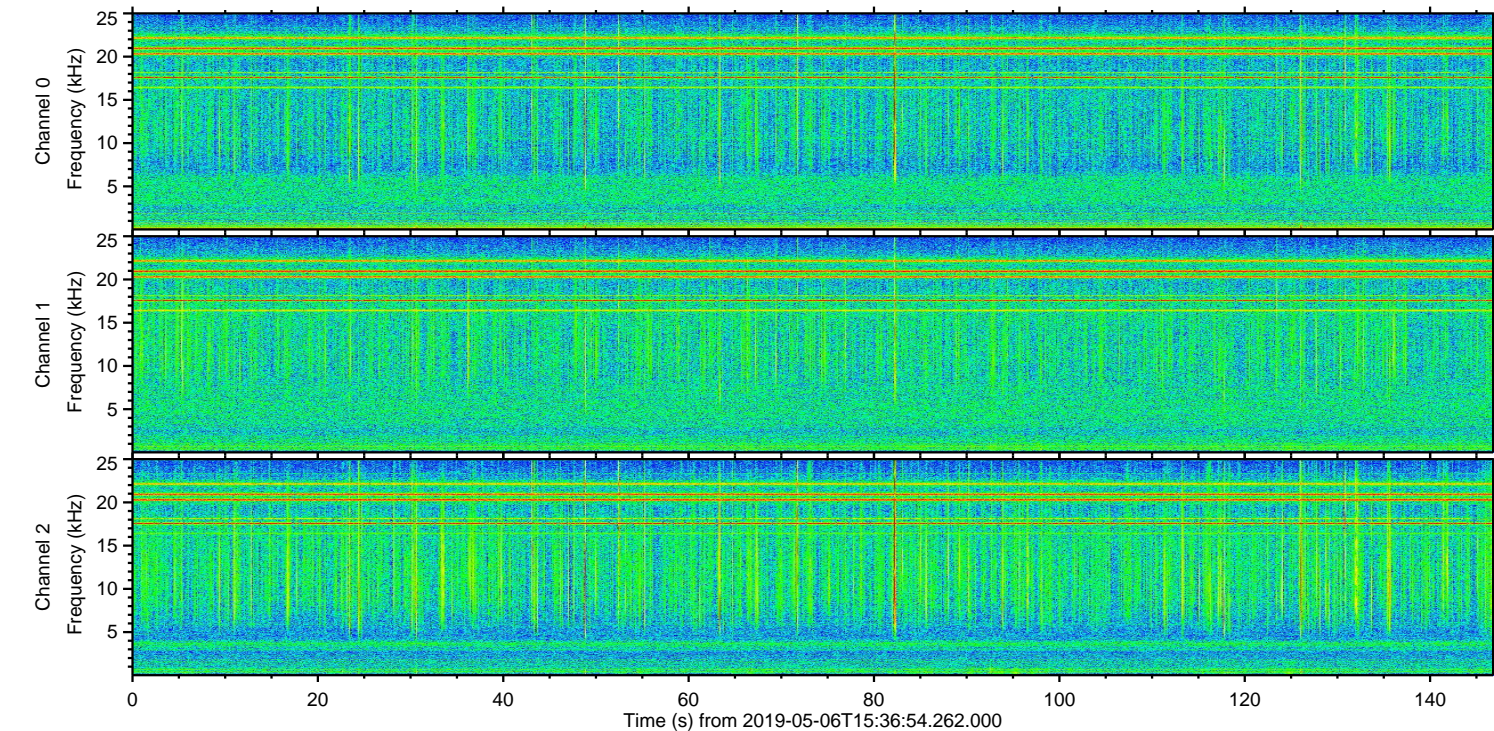
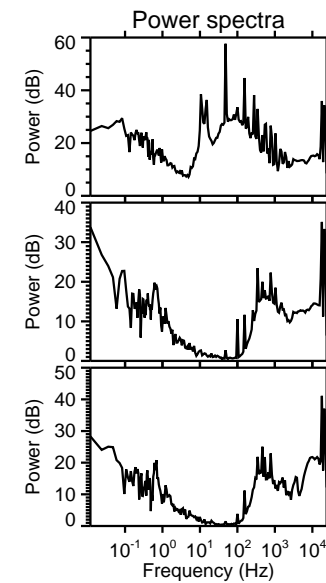
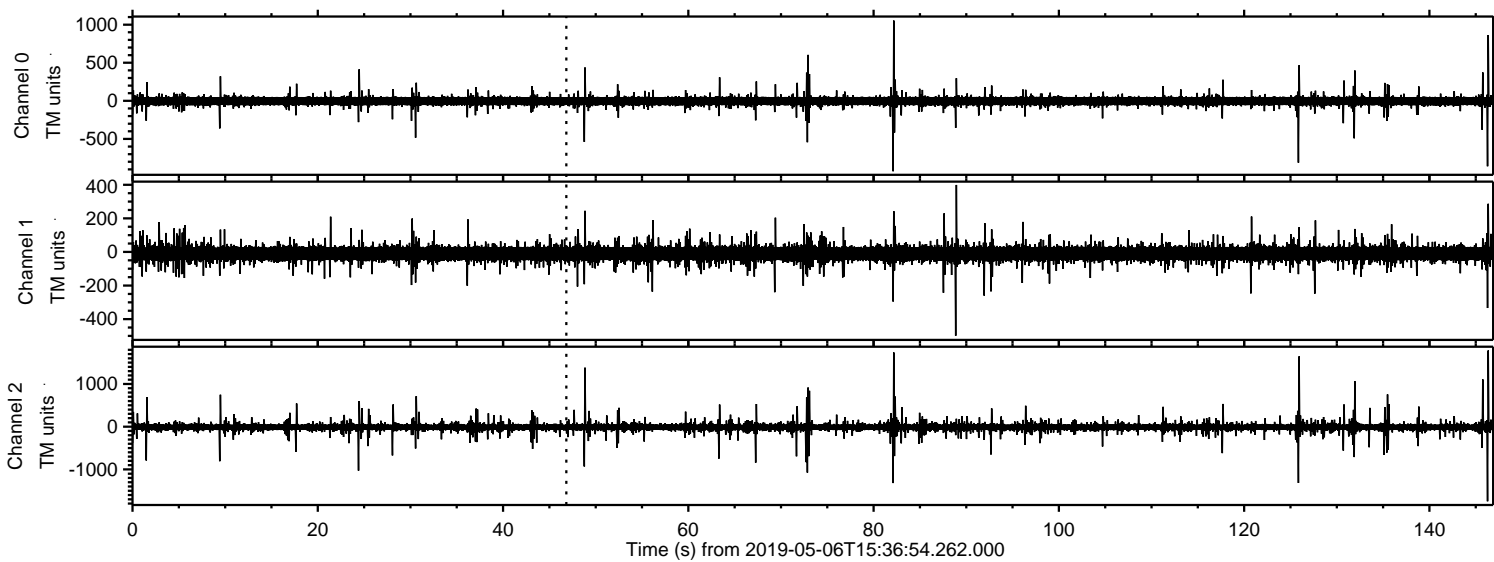


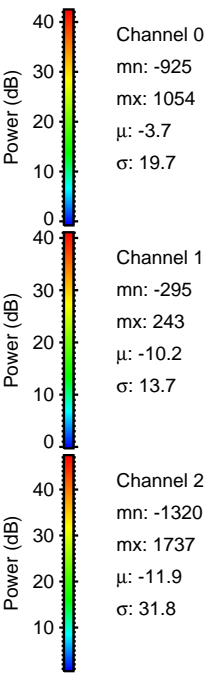
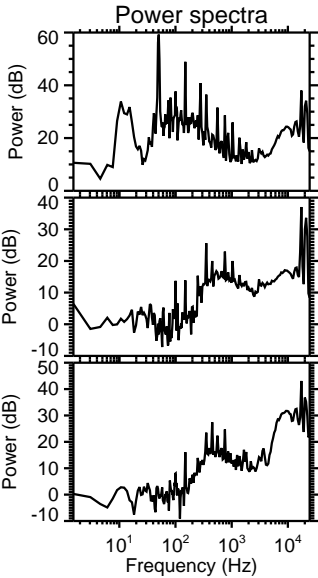
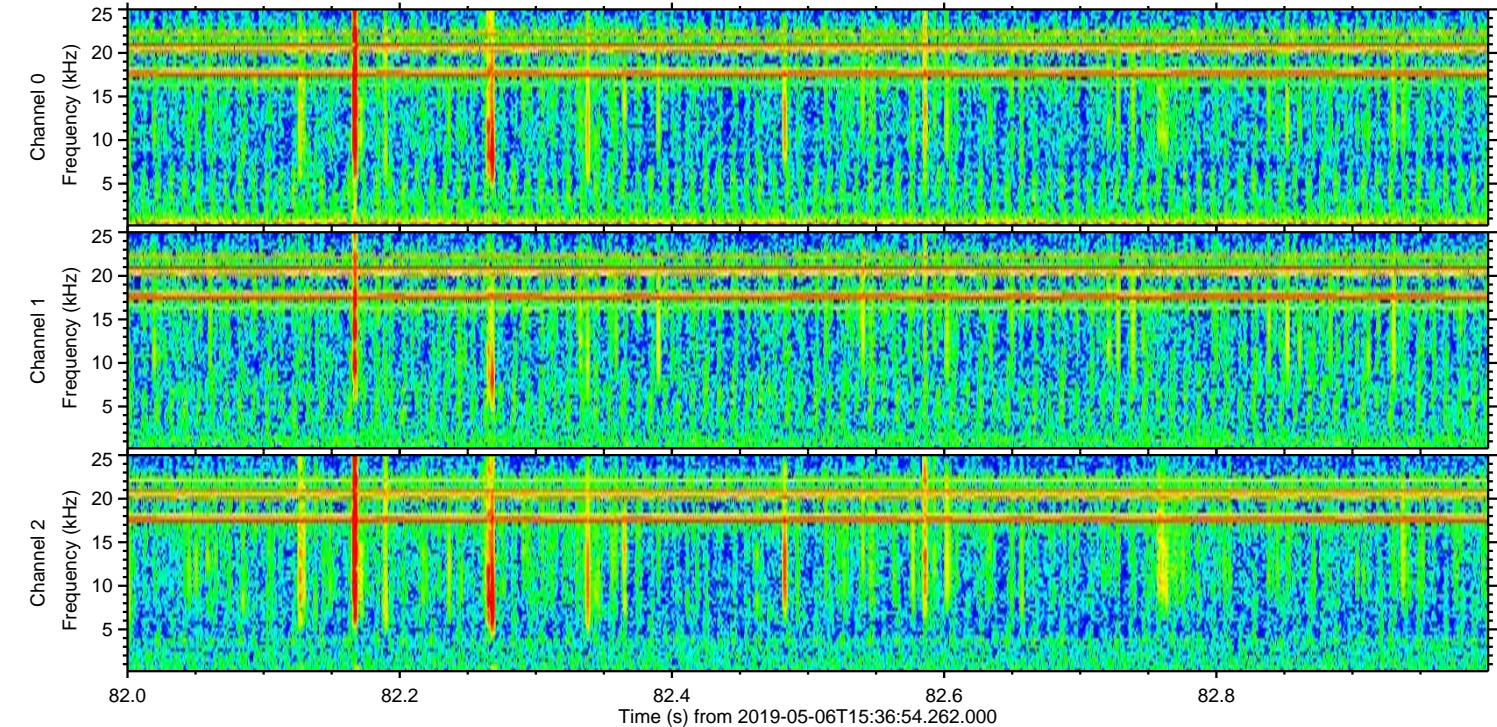
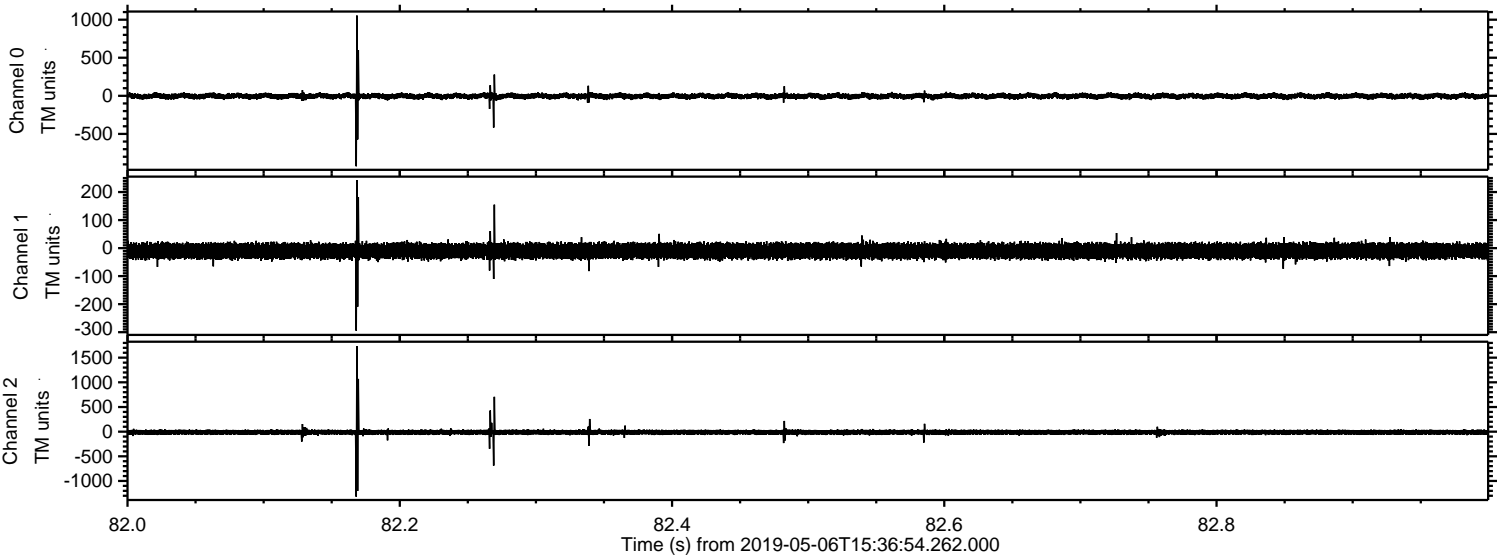
# ELMAVAN 3D WAVEFORMS (Measured data sampled at 50 kHz) 50999 packets of 144 samples from 2019-05-06T15:36:54.262.000.

Processed Mon May 6 17:45:15 2019 by ELM ver.2012-10-06 from 001\_\_elm20190506\_153653\_\_dat00.bin





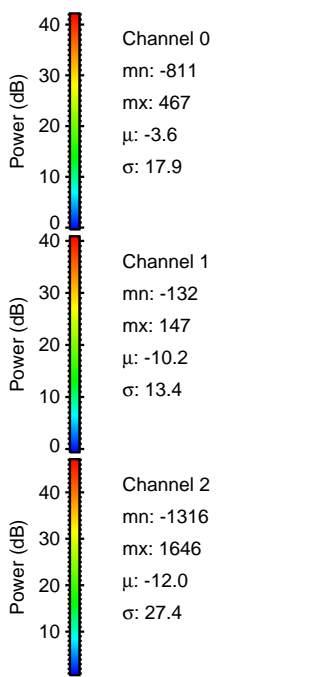
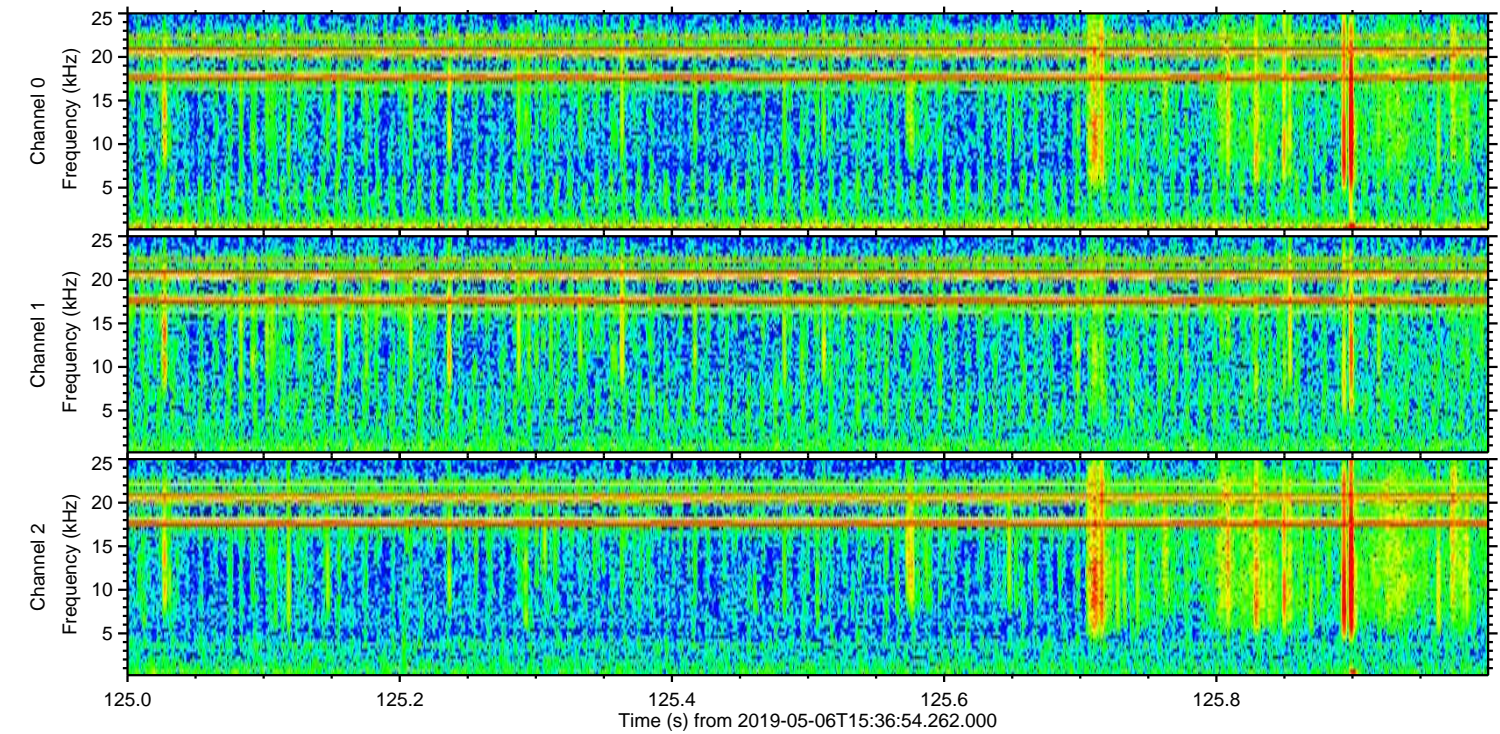
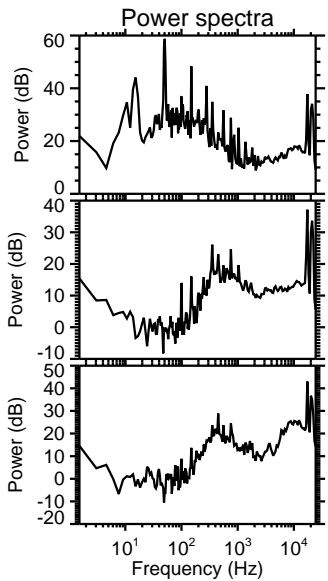
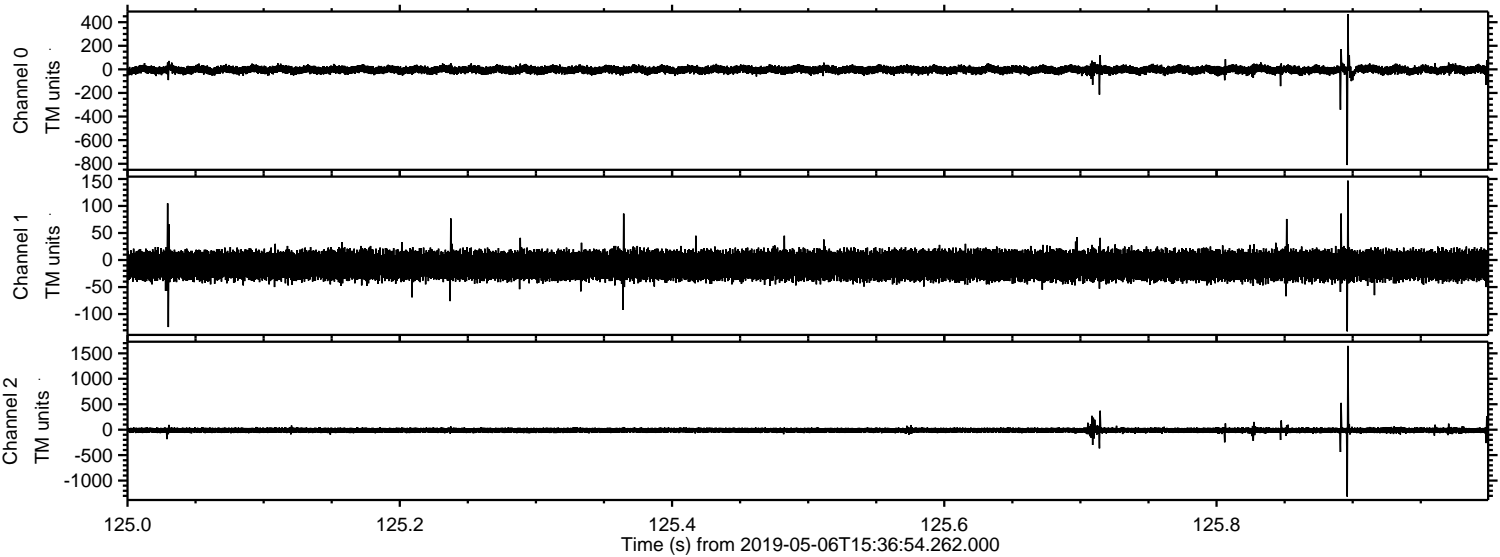
Processed Mon May 6 17:45:29 2019 by ELM ver.2012-10-06 from 001\_\_elm20190506\_153653\_\_dat00.bin





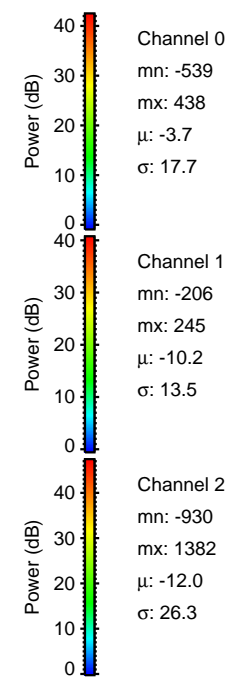
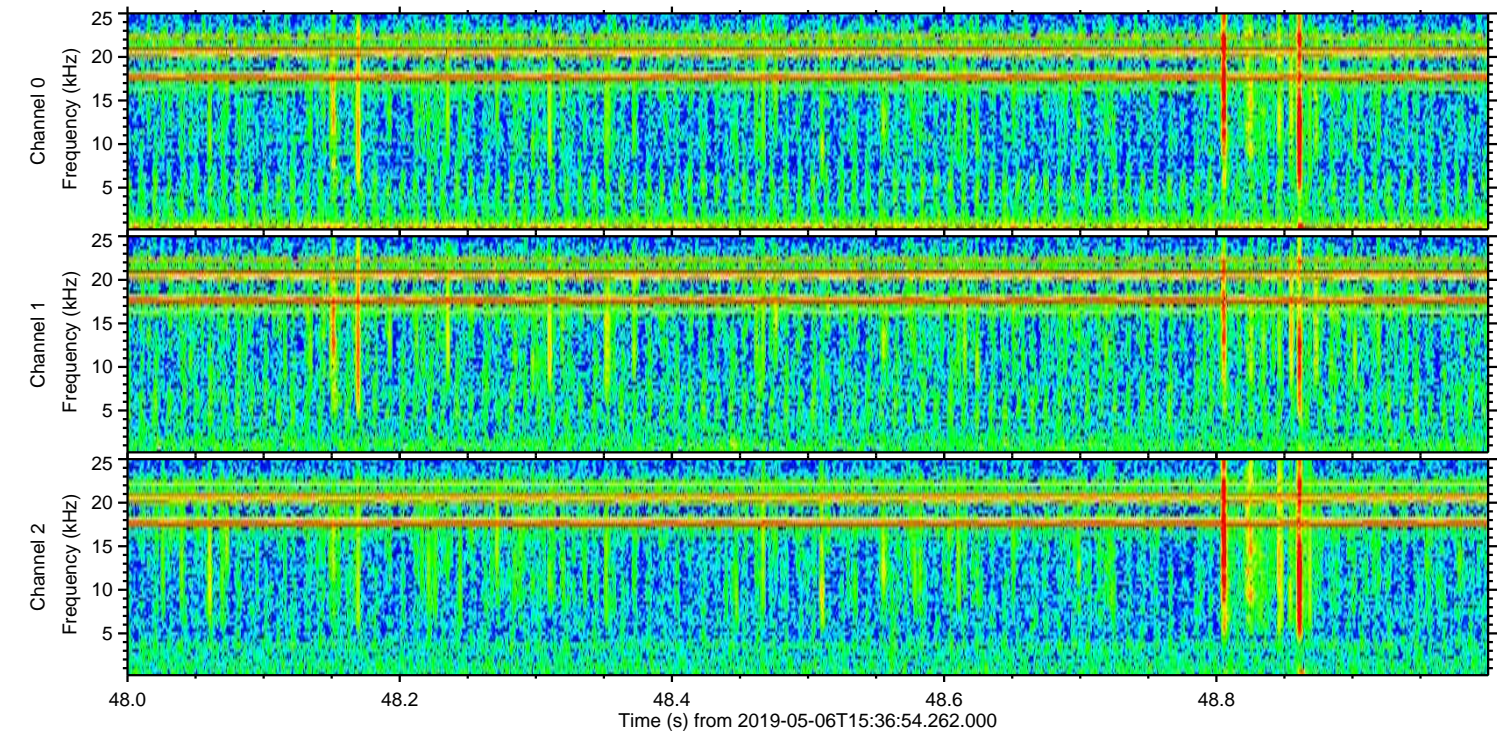
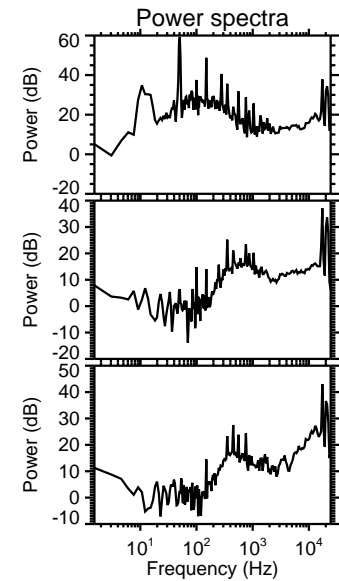
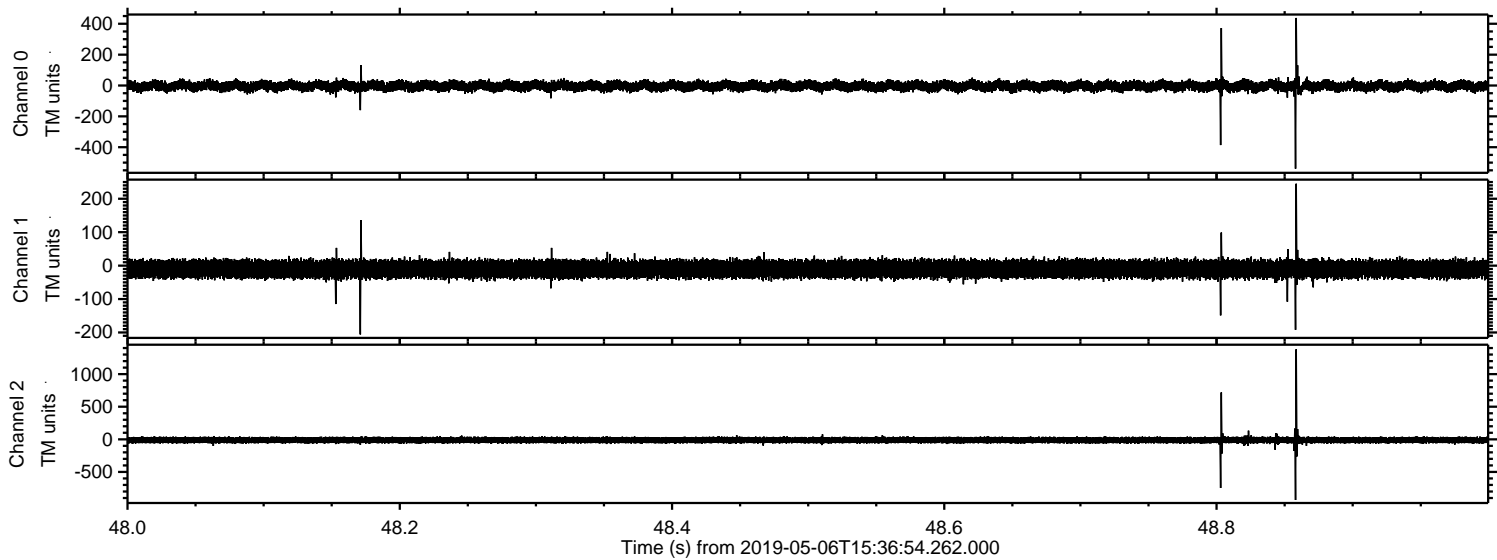
ELMAVAN 3D WAVEFORMS (Measured data sampled at 50 kHz) 50999 packets of 144 samples from 2019-05-06T15:36:54.262.000. Part 126/147

Processed Mon May 6 17:45:30 2019 by ELM ver.2012-10-06 from 001\_\_elm20190506\_153653\_\_dat00.bin





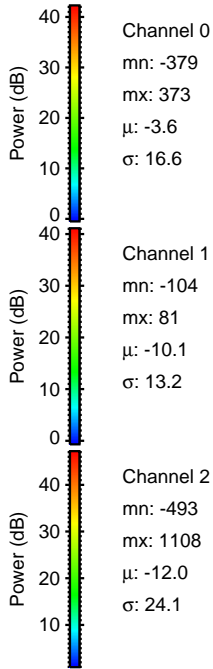
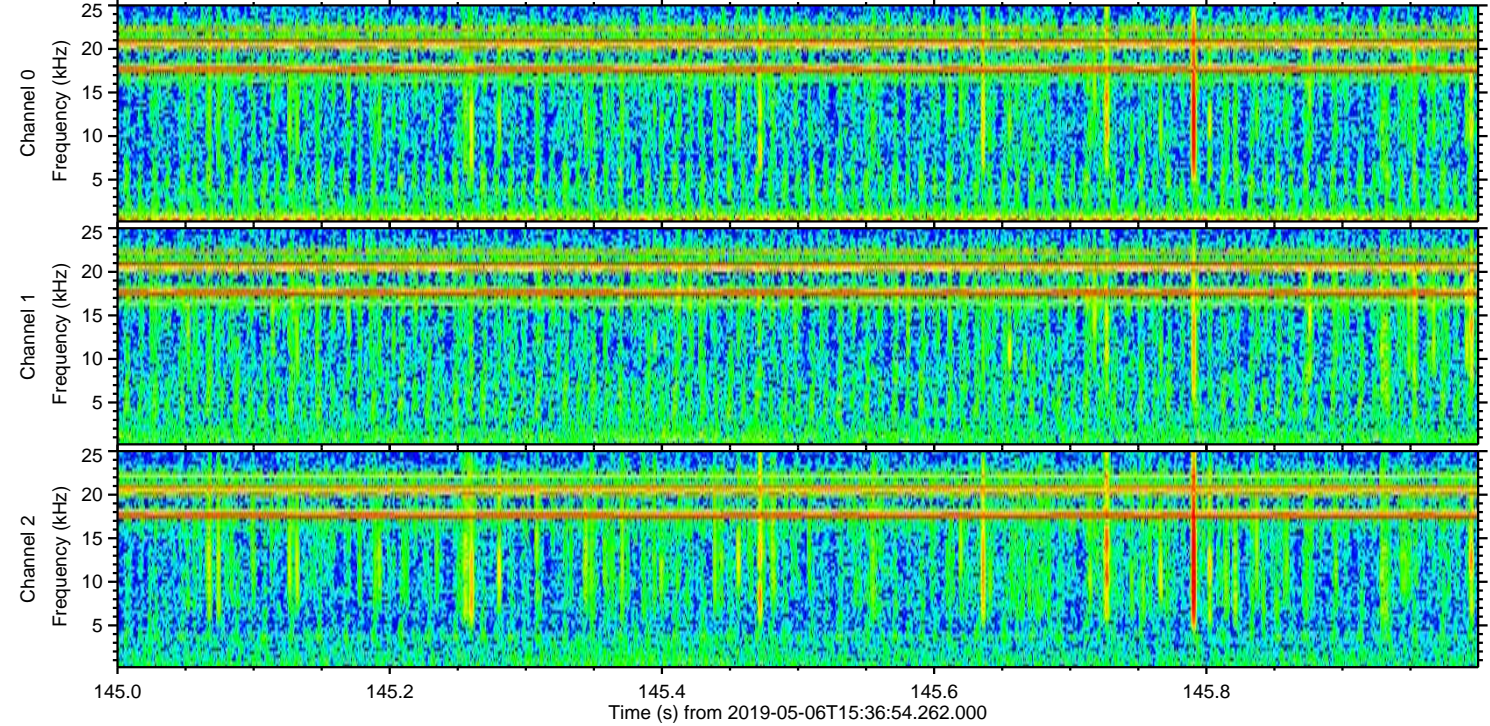
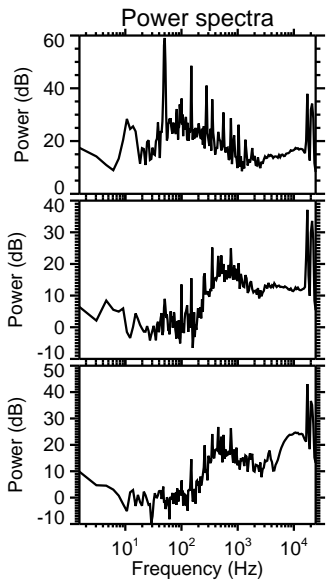
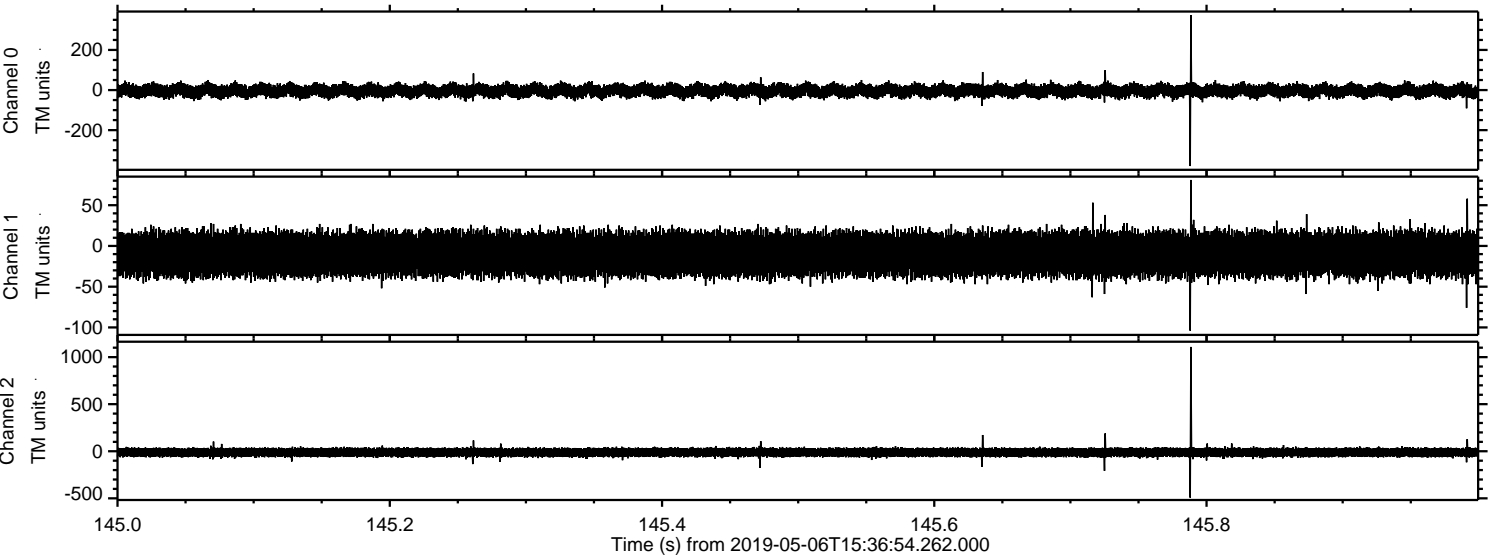
Processed Mon May 6 17:45:31 2019 by ELM ver.2012-10-06 from 001\_\_elm20190506\_153653\_\_dat00.bin





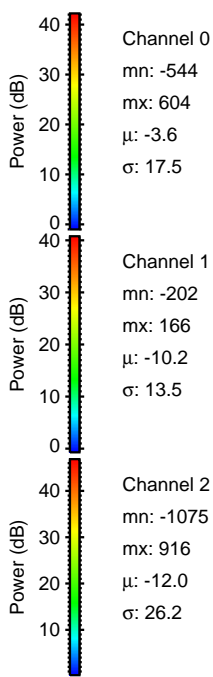
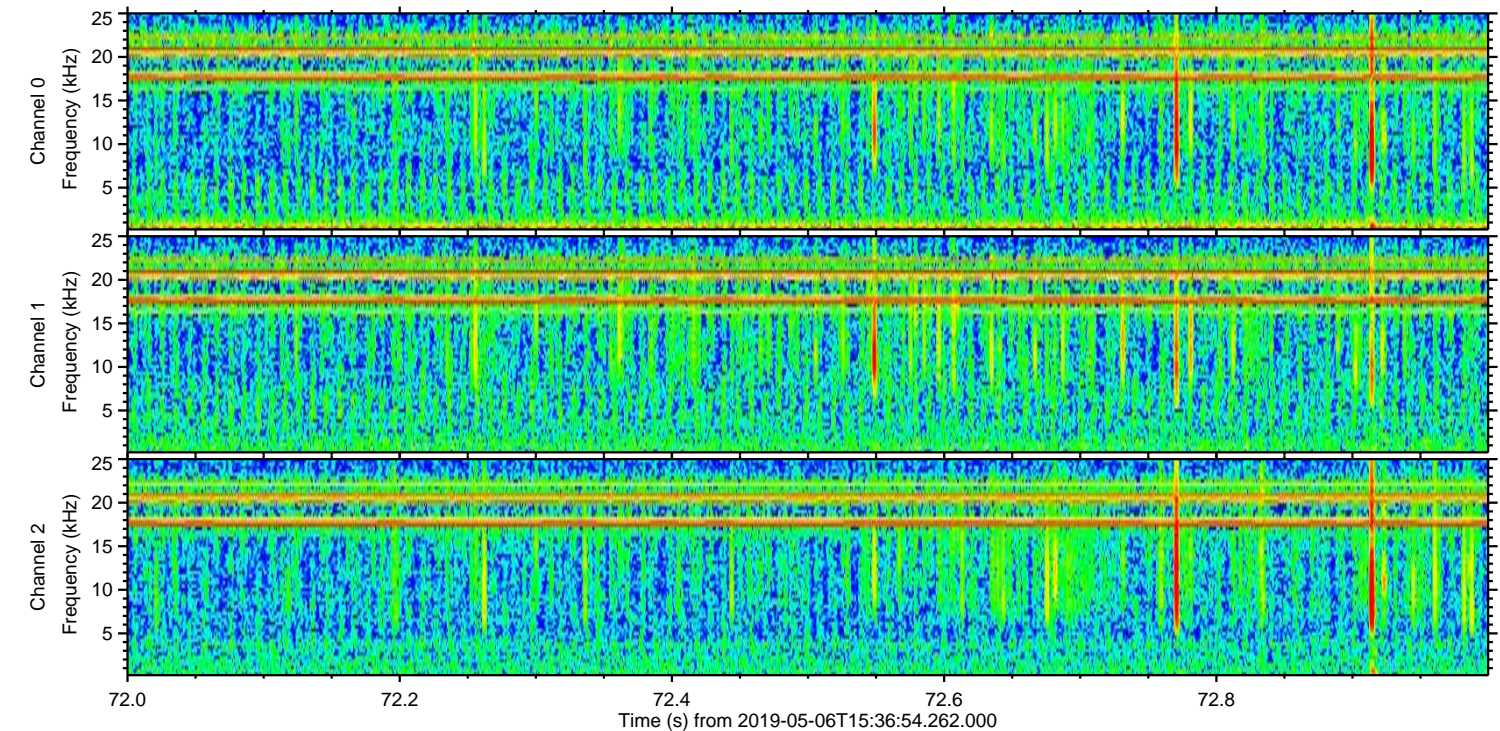
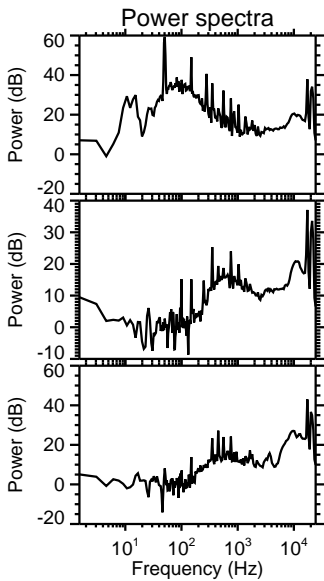
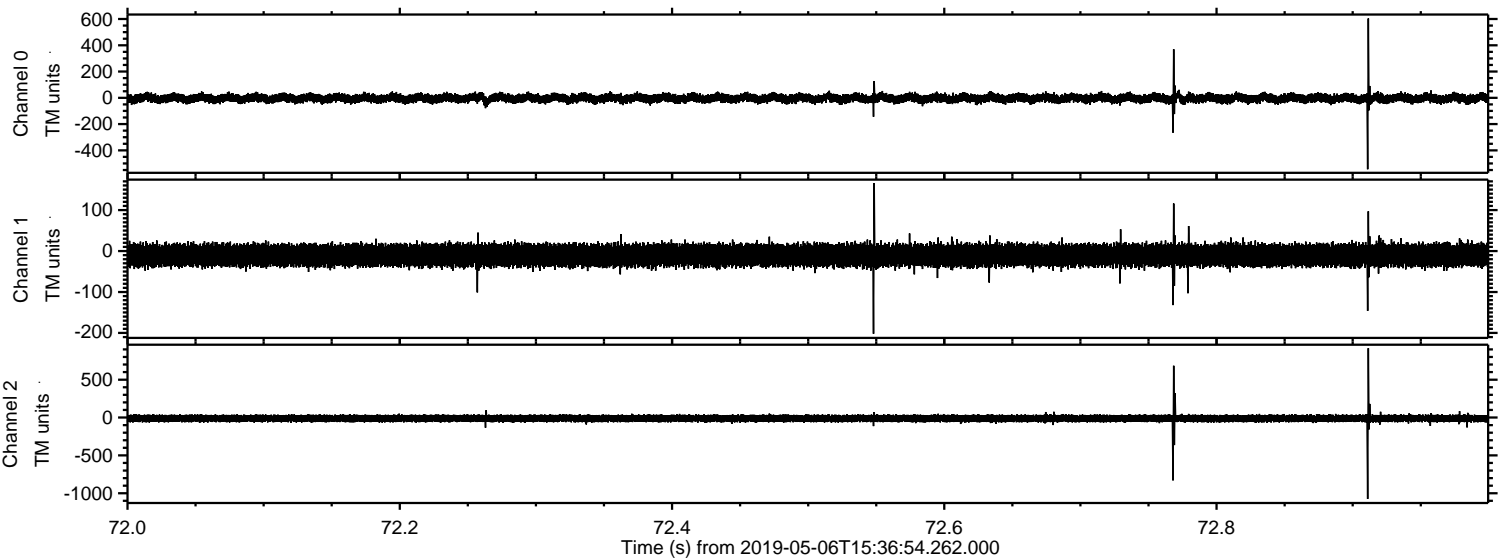
ELMAVAN 3D WAVEFORMS (Measured data sampled at 50 kHz) 50999 packets of 144 samples from 2019-05-06T15:36:54.262.000. Part 146/147

Processed Mon May 6 17:45:32 2019 by ELM ver.2012-10-06 from 001\_\_elm20190506\_153653\_\_dat00.bin



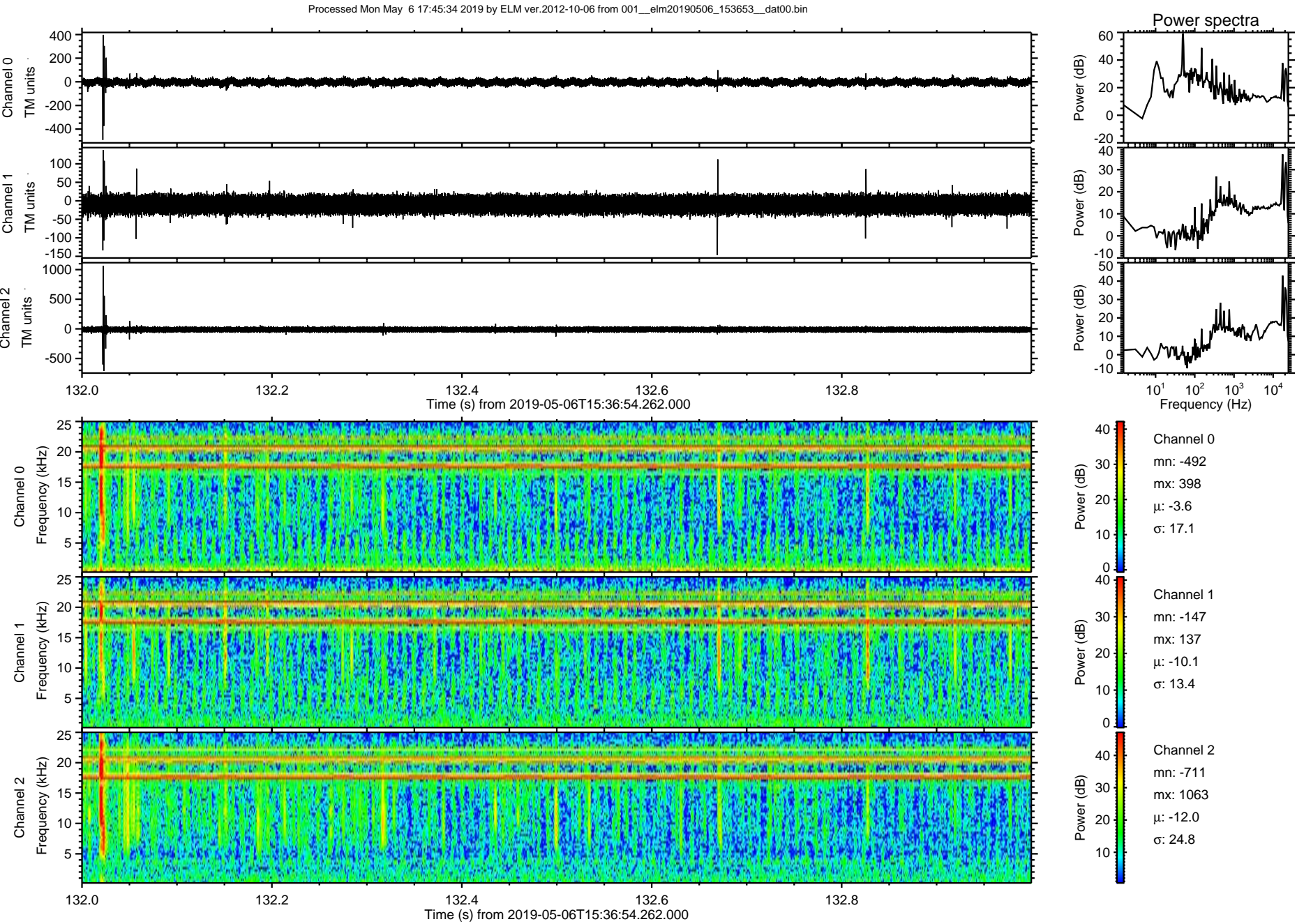


Processed Mon May 6 17:45:33 2019 by ELM ver.2012-10-06 from 001\_\_elm20190506\_153653\_\_dat00.bin



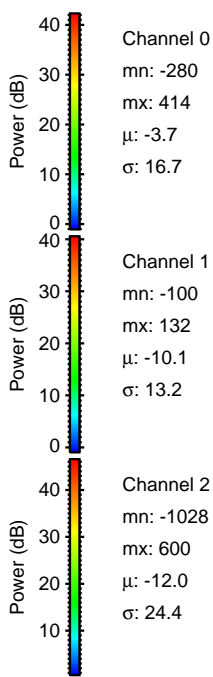
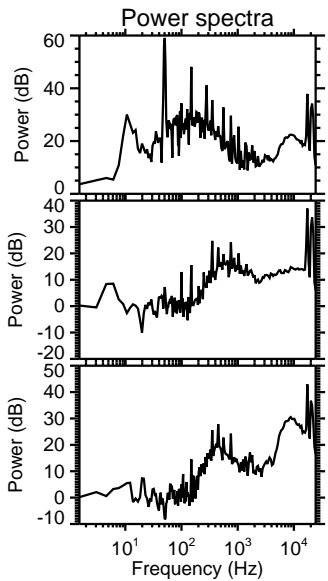
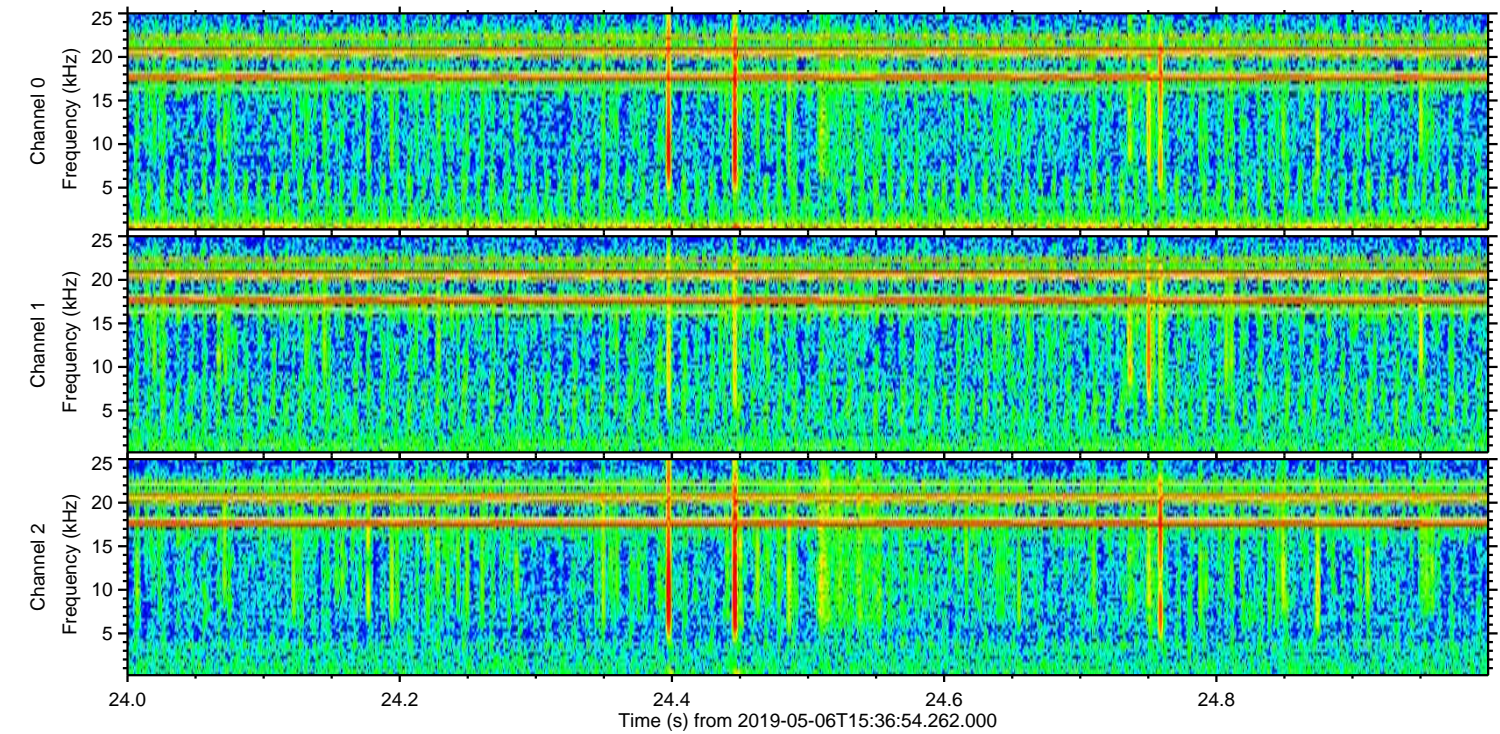
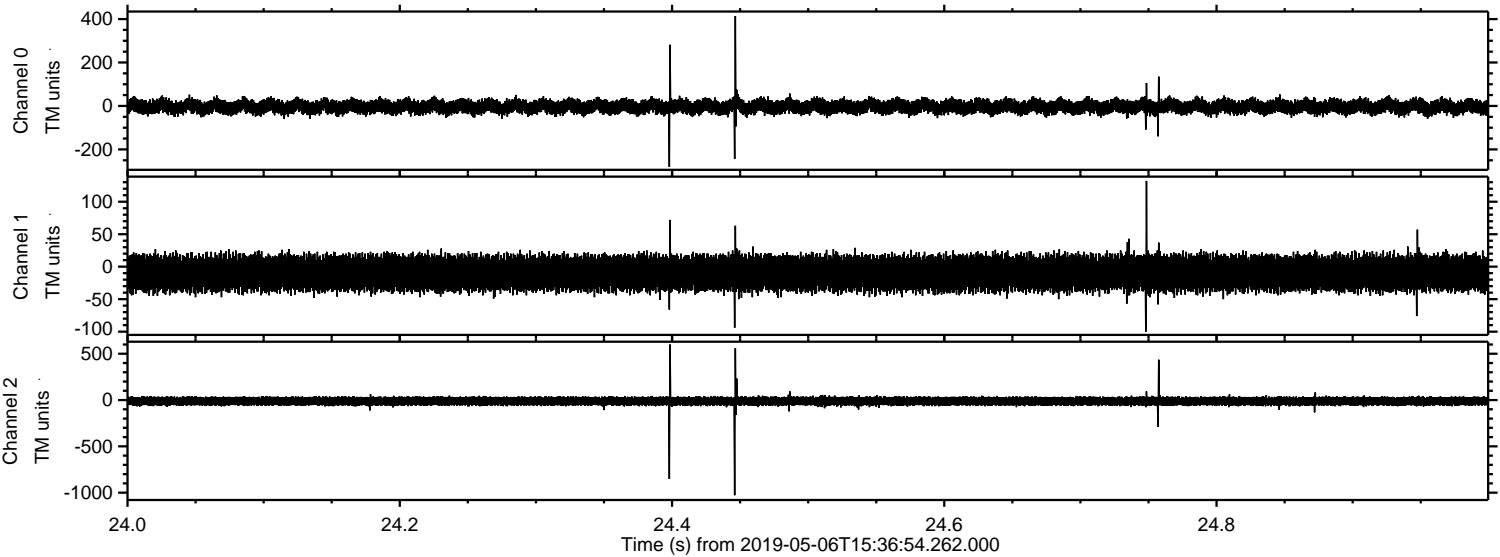


ELMAVAN 3D WAVEFORMS (Measured data sampled at 50 kHz) 50999 packets of 144 samples from 2019-05-06T15:36:54.262.000. Part 133/147



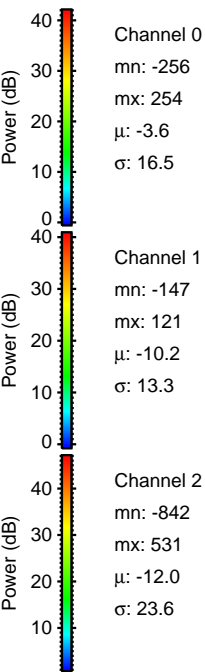
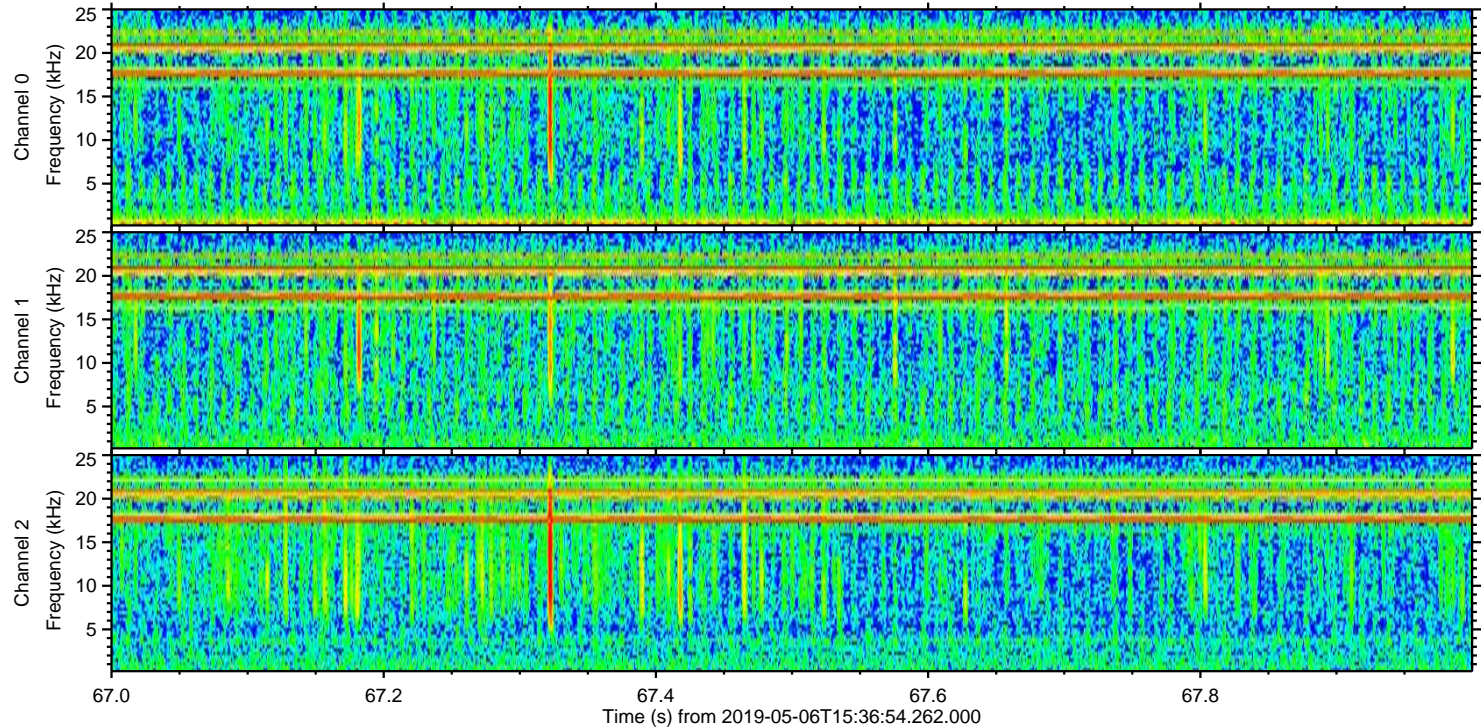
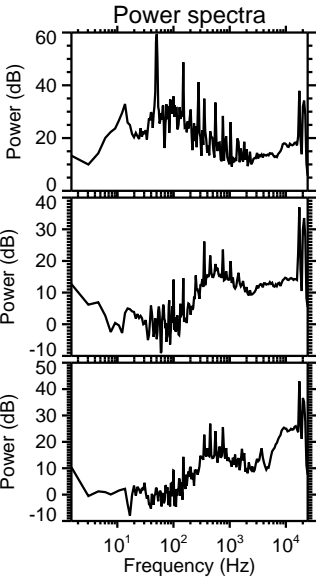
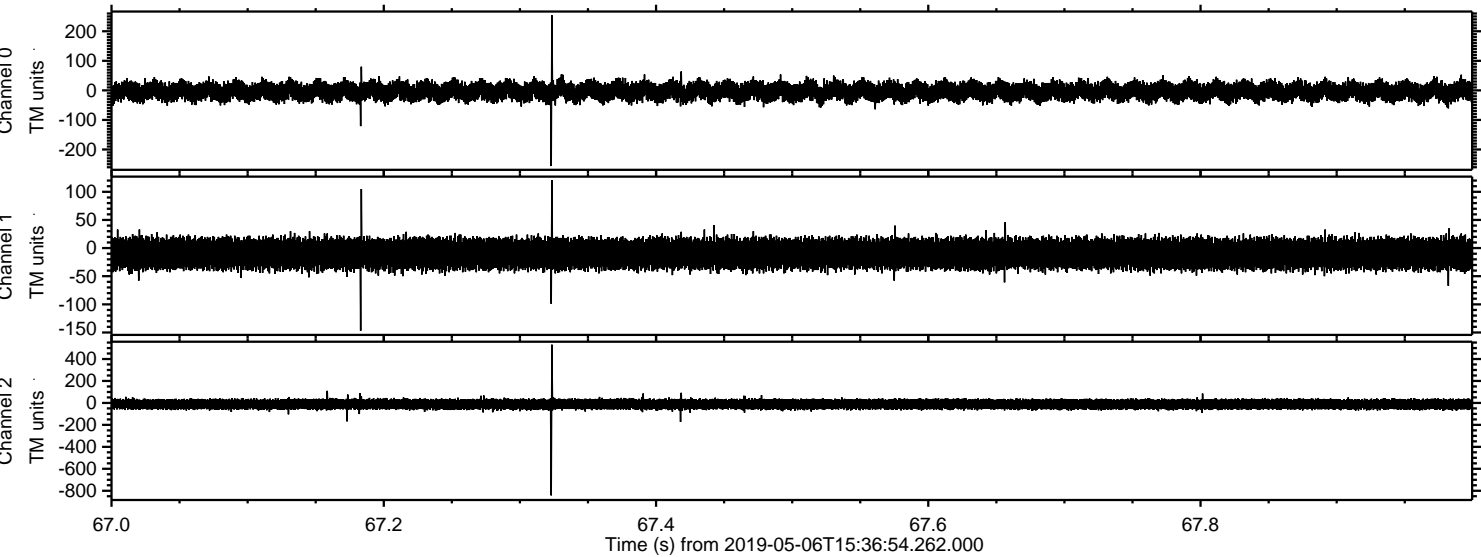


Processed Mon May 6 17:45:35 2019 by ELM ver.2012-10-06 from 001\_\_elm20190506\_153653\_\_dat00.bin





Processed Mon May 6 17:45:36 2019 by ELM ver.2012-10-06 from 001\_\_elm20190506\_153653\_\_dat00.bin





Processed Mon May 6 17:45:37 2019 by ELM ver.2012-10-06 from 001\_\_elm20190506\_153653\_\_dat00.bin

