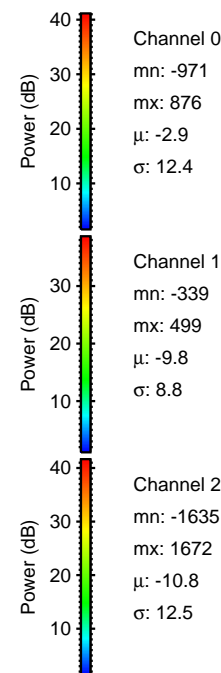
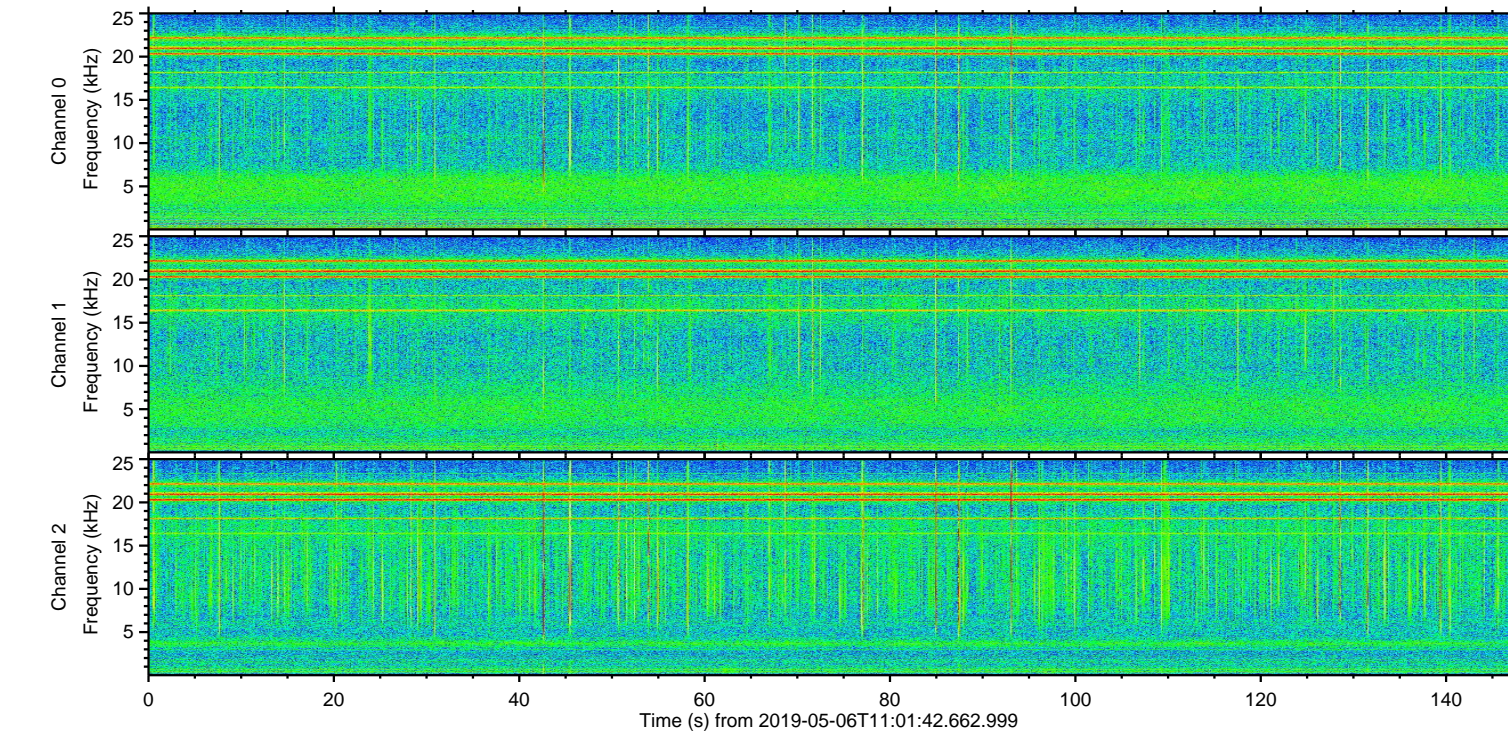
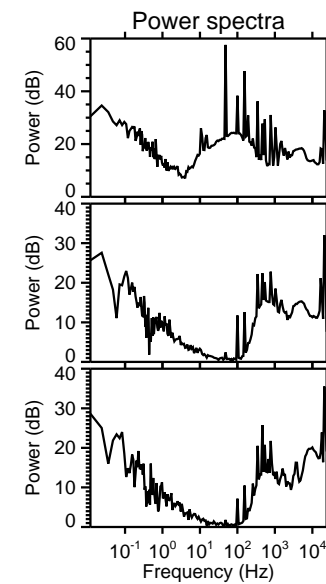
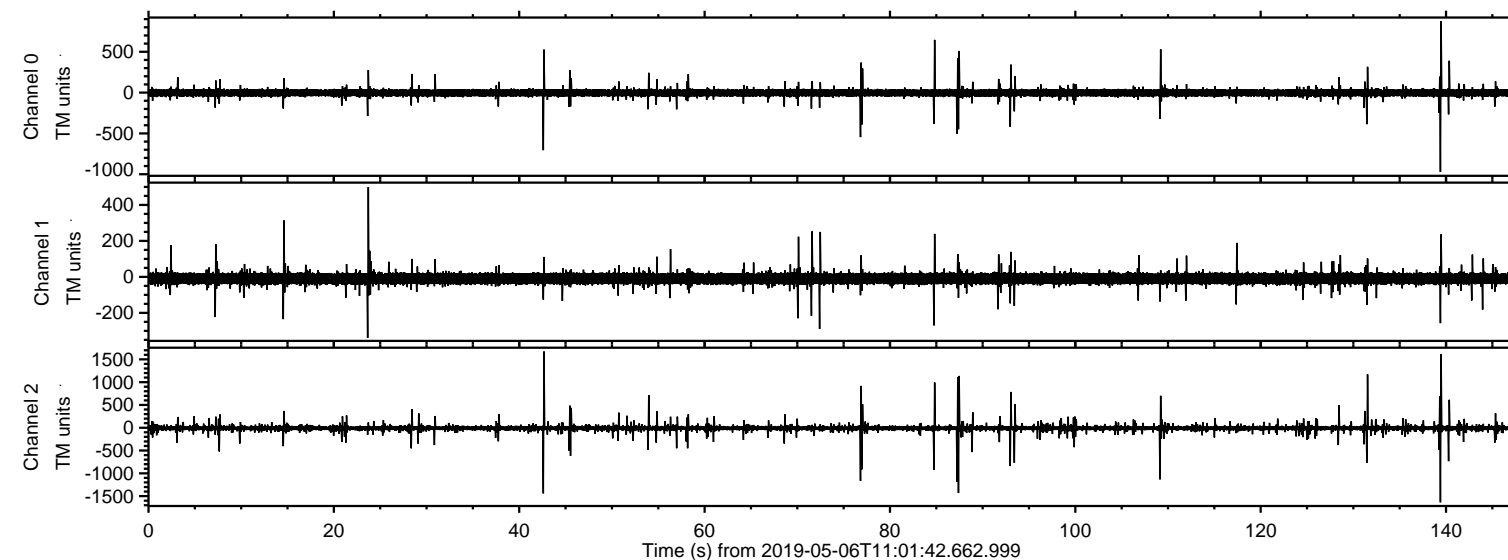


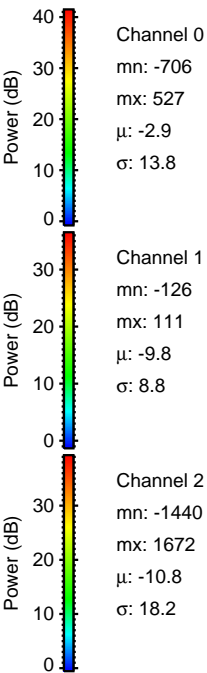
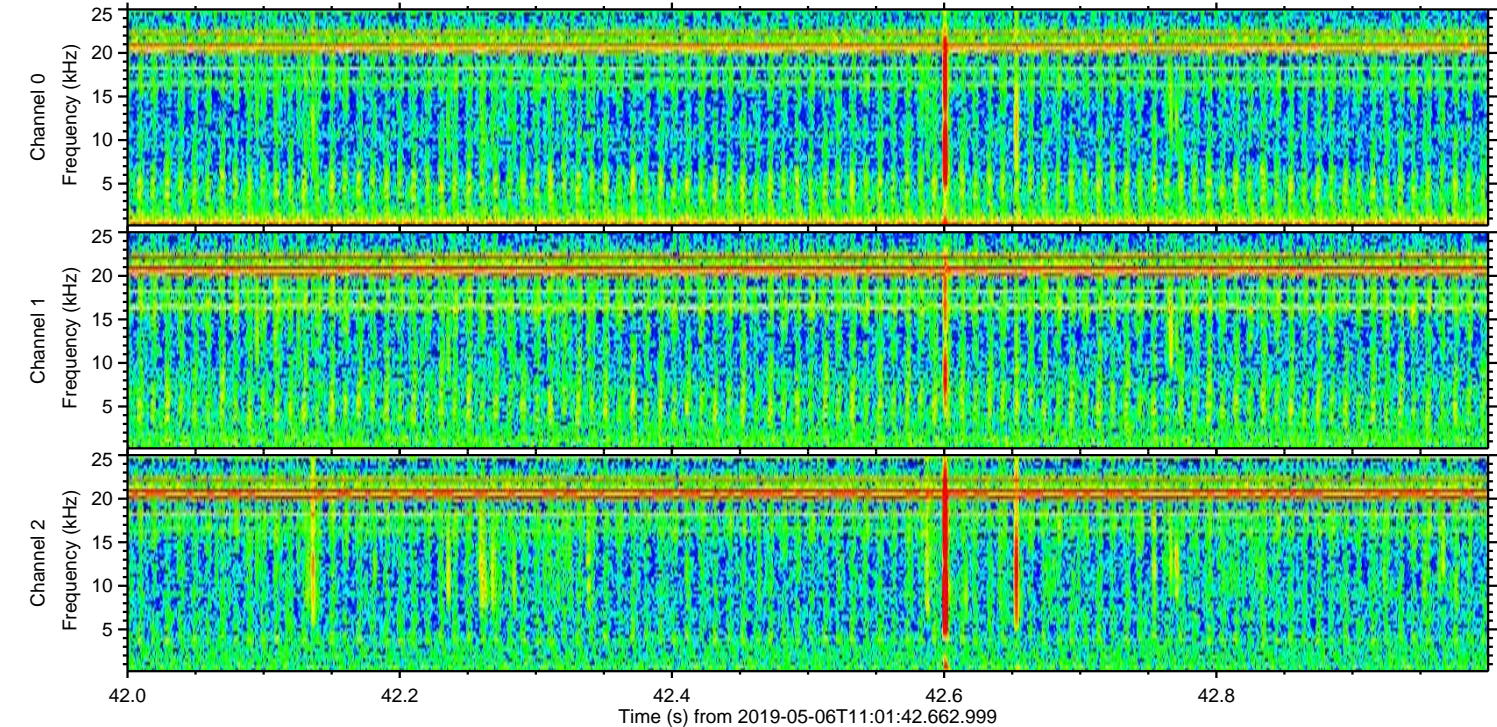
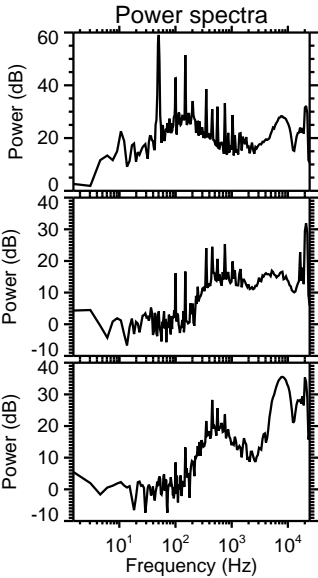
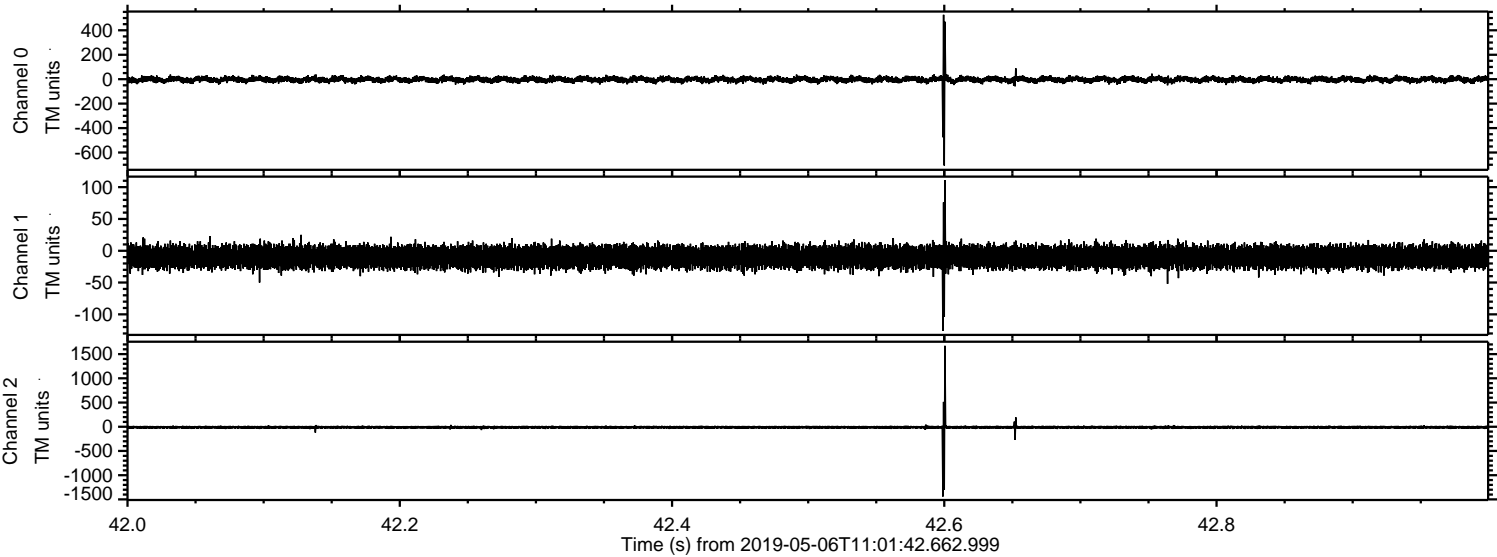
# ELMAVAN 3D WAVEFORMS (Measured data sampled at 50 kHz) 51000 packets of 144 samples from 2019-05-06T11:01:42.662.999.

Processed Mon May 6 13:09:55 2019 by ELM ver.2012-10-06 from 001\_\_elm20190506\_110141\_\_dat00.bin





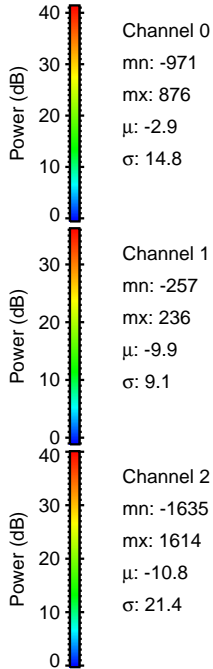
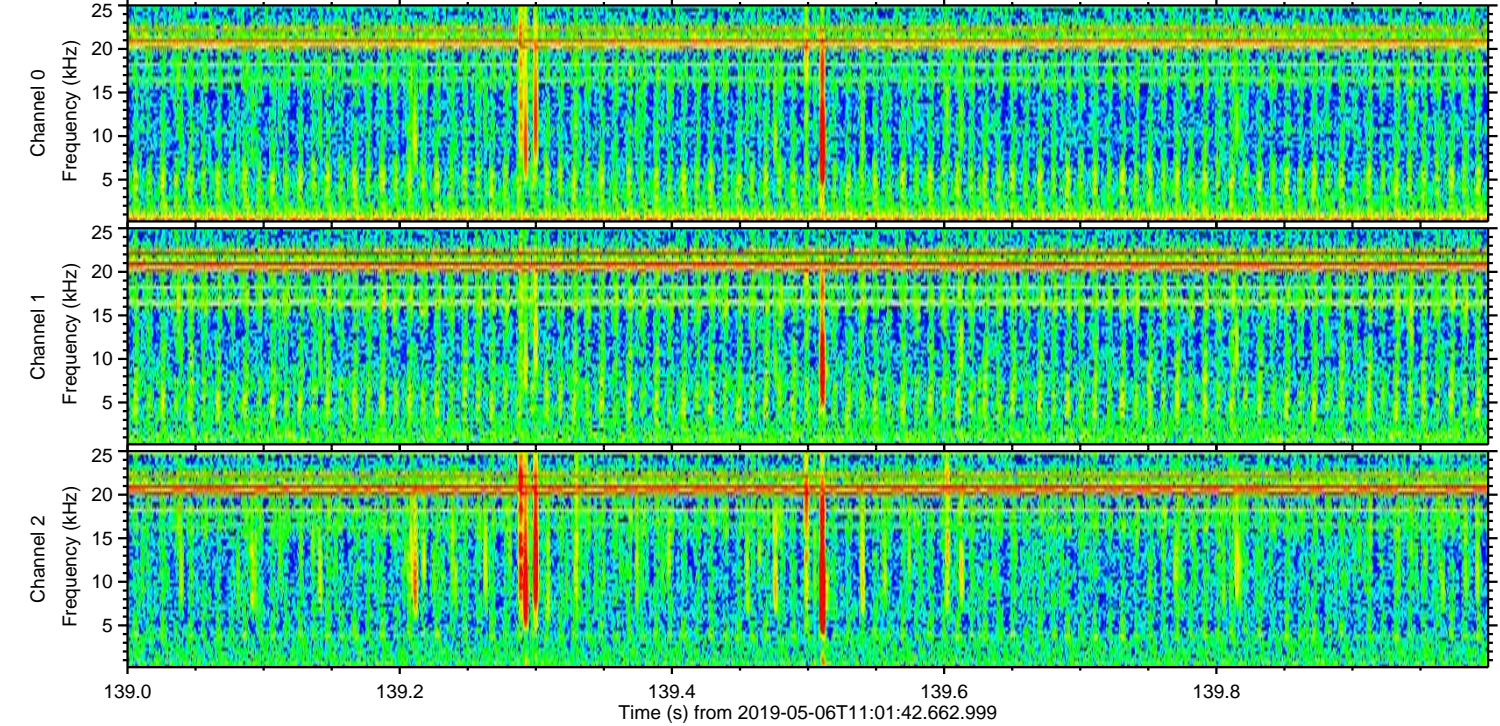
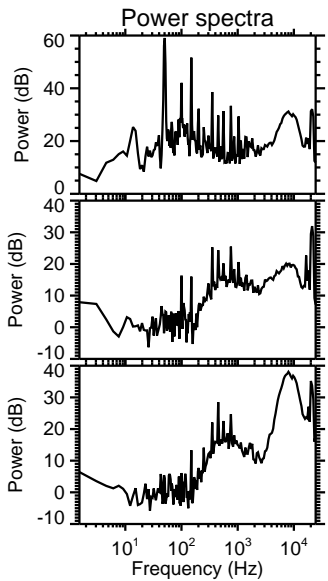
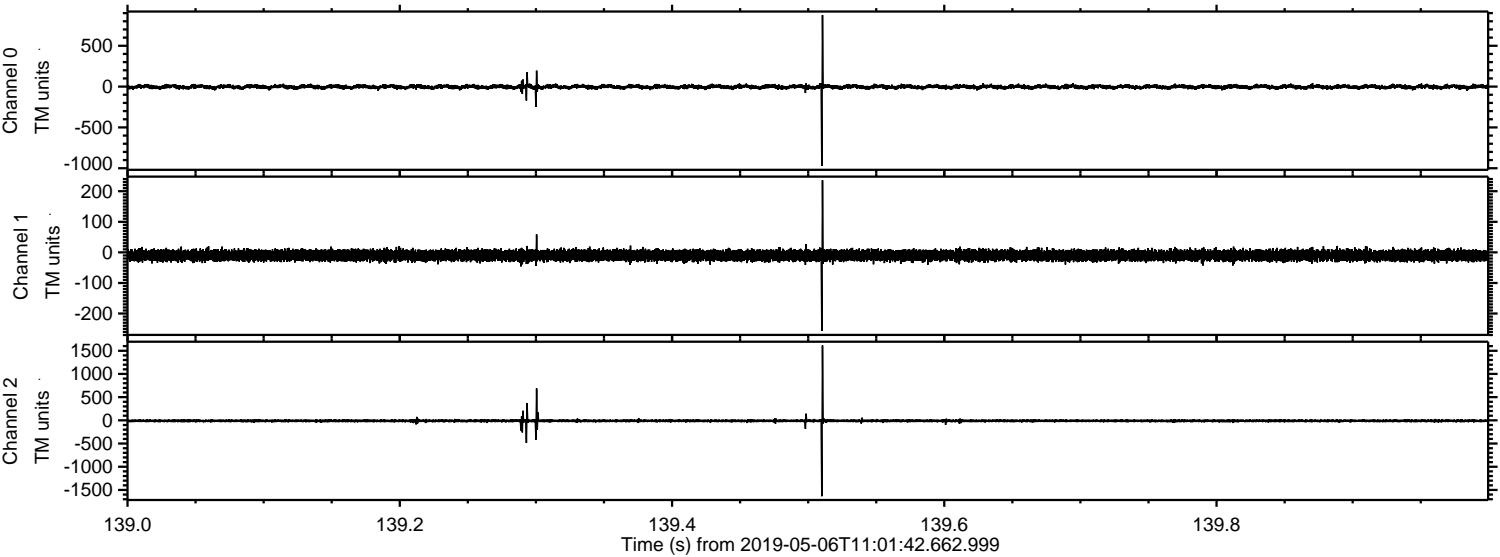
Processed Mon May 6 13:10:01 2019 by ELM ver.2012-10-06 from 001\_\_elm20190506\_110141\_\_dat00.bin





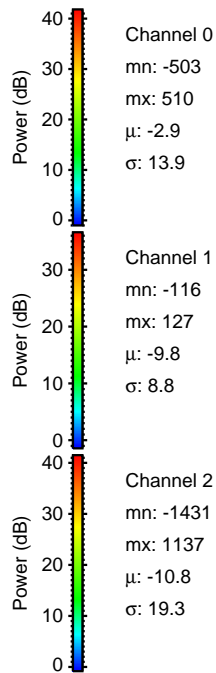
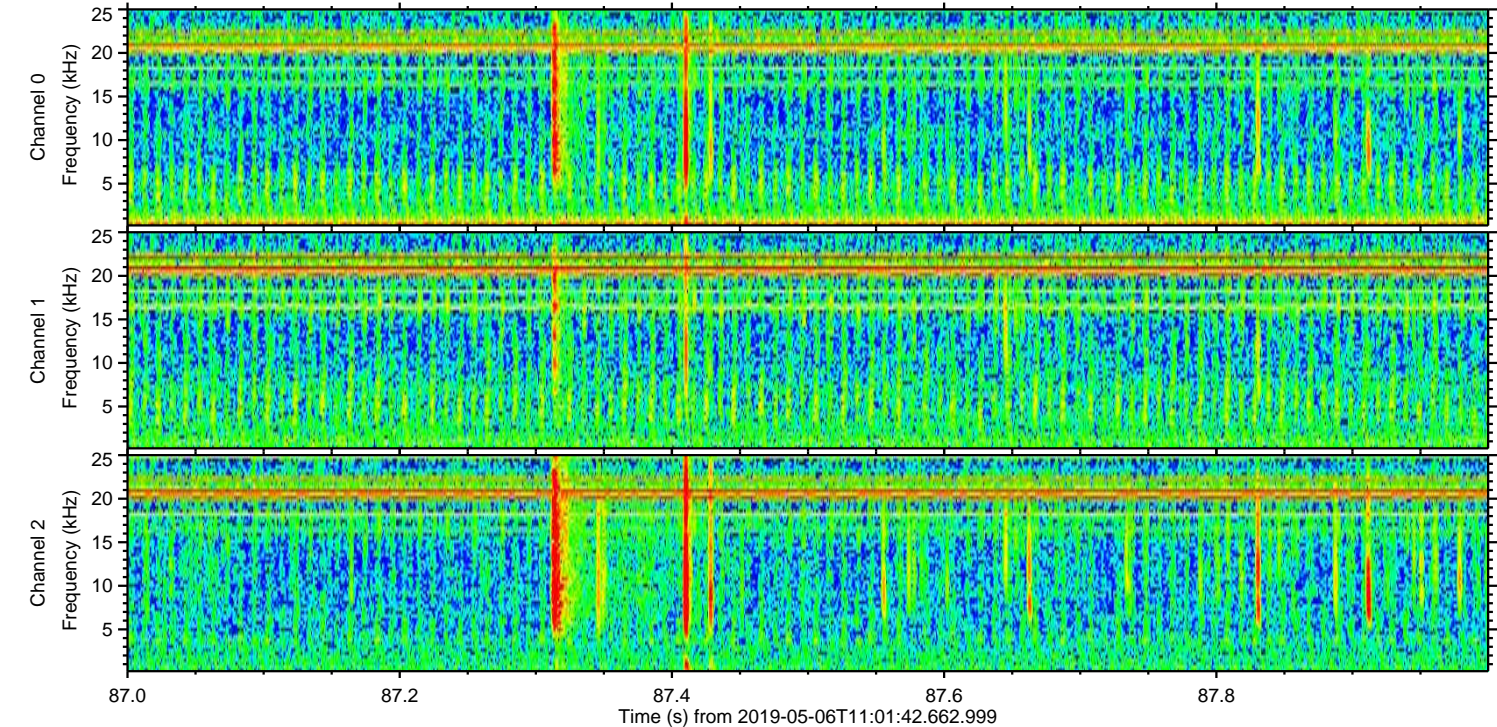
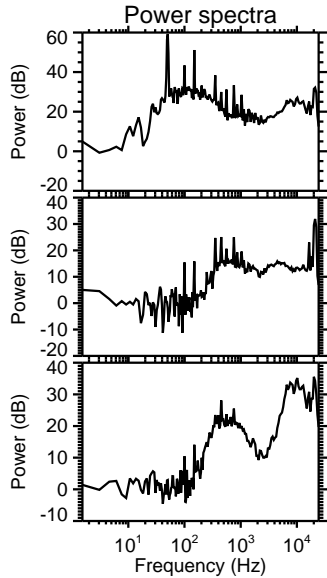
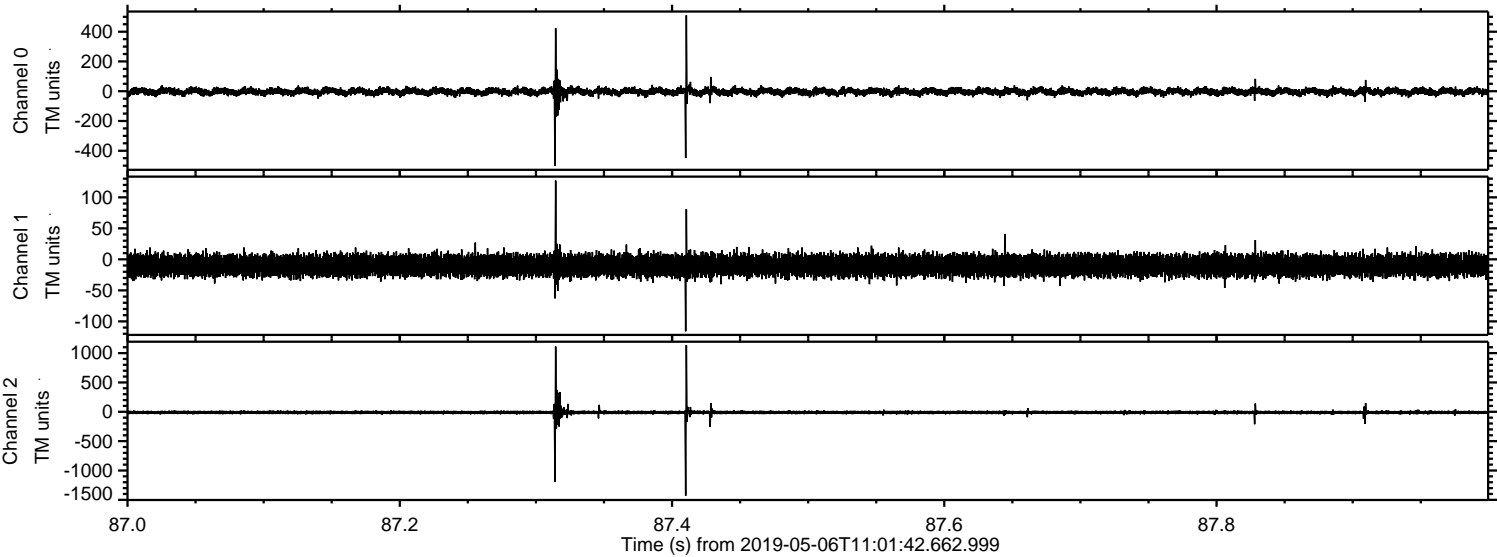
ELMAVAN 3D WAVEFORMS (Measured data sampled at 50 kHz) 51000 packets of 144 samples from 2019-05-06T11:01:42.662.999. Part 140/147

Processed Mon May 6 13:10:01 2019 by ELM ver.2012-10-06 from 001\_\_elm20190506\_110141\_\_dat00.bin



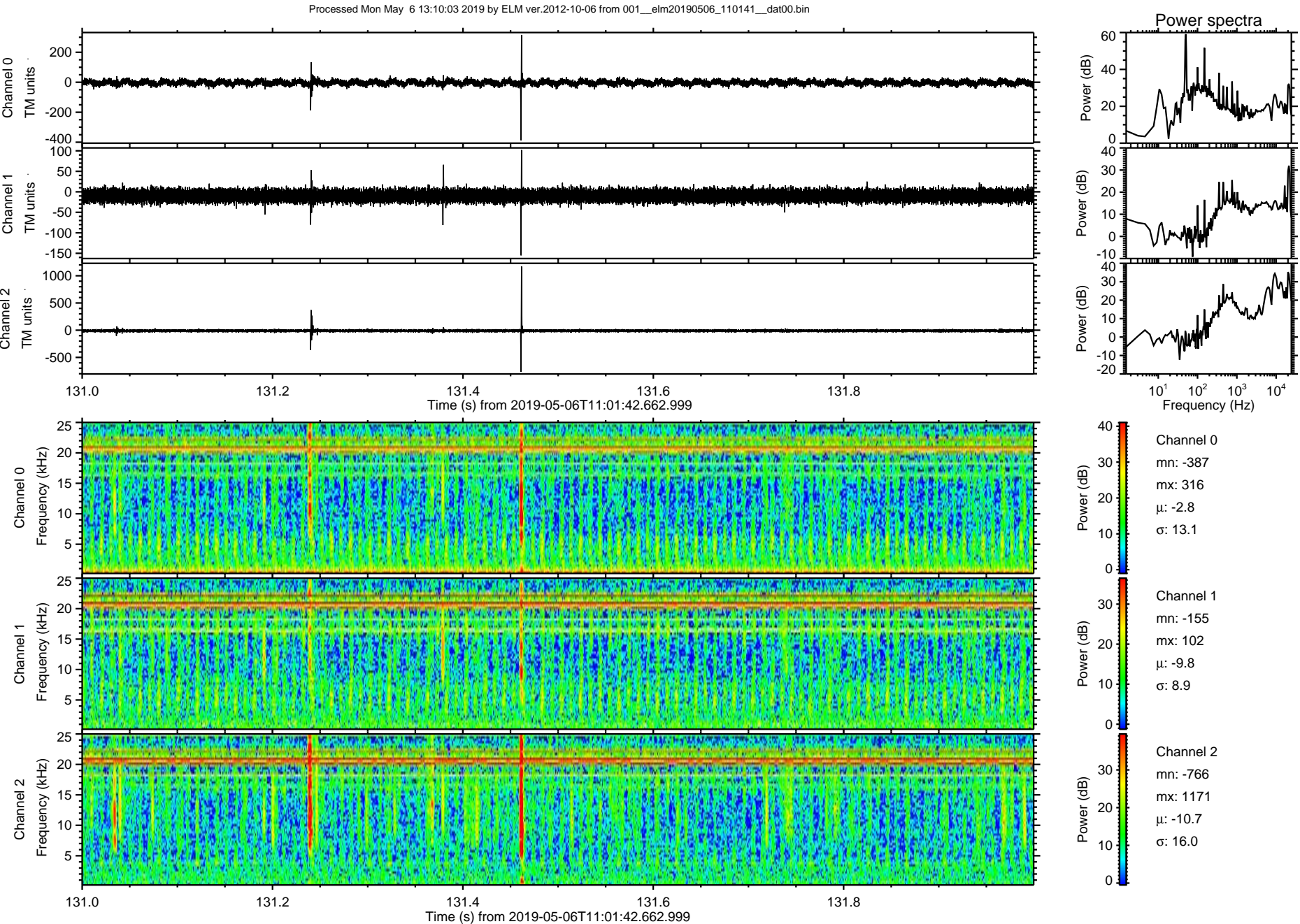


Processed Mon May 6 13:10:02 2019 by ELM ver.2012-10-06 from 001\_\_elm20190506\_110141\_\_dat00.bin



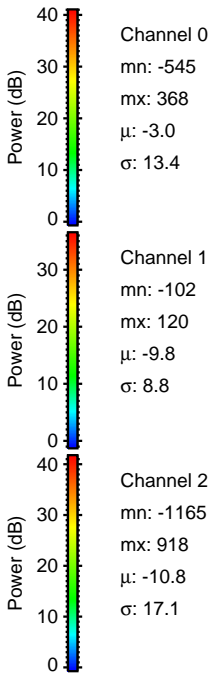
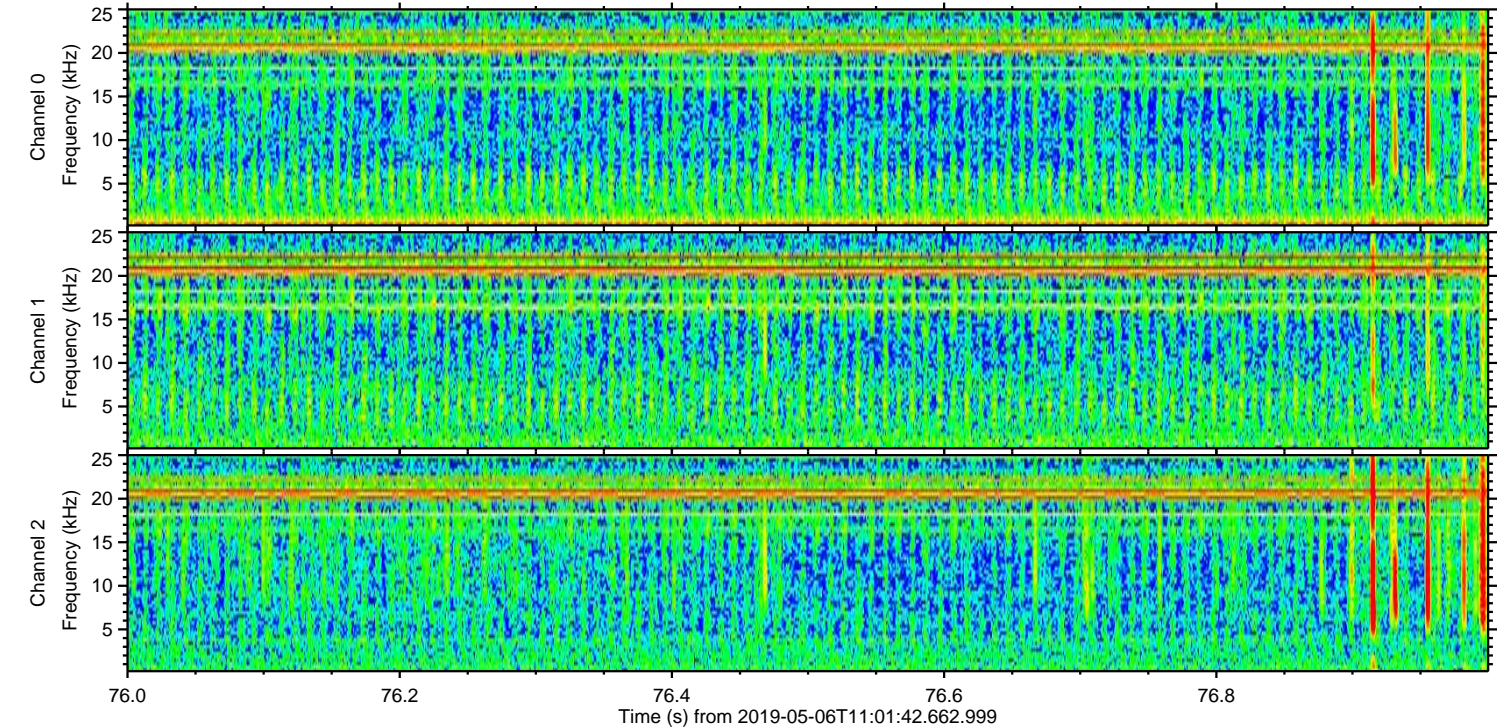
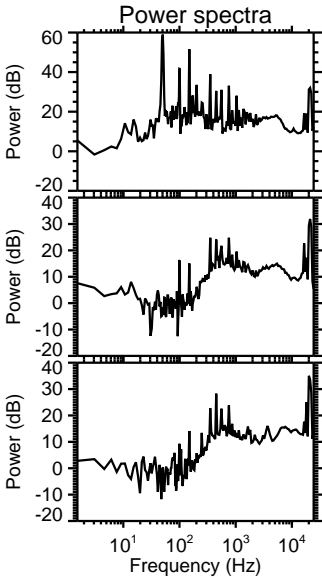
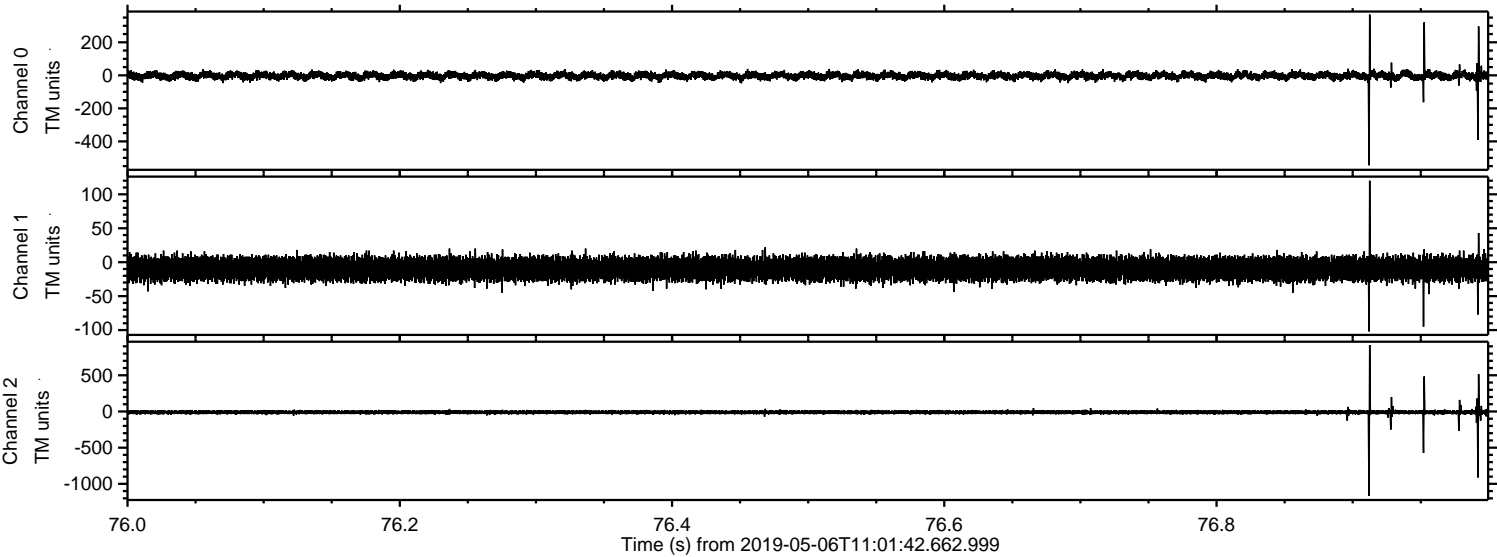


ELMAVAN 3D WAVEFORMS (Measured data sampled at 50 kHz) 51000 packets of 144 samples from 2019-05-06T11:01:42.662.999. Part 132/147





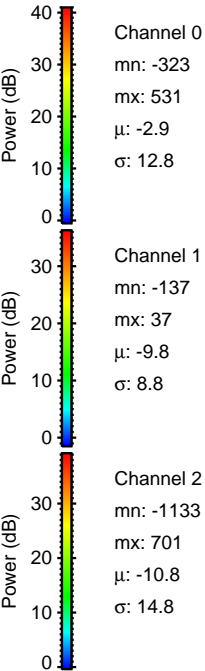
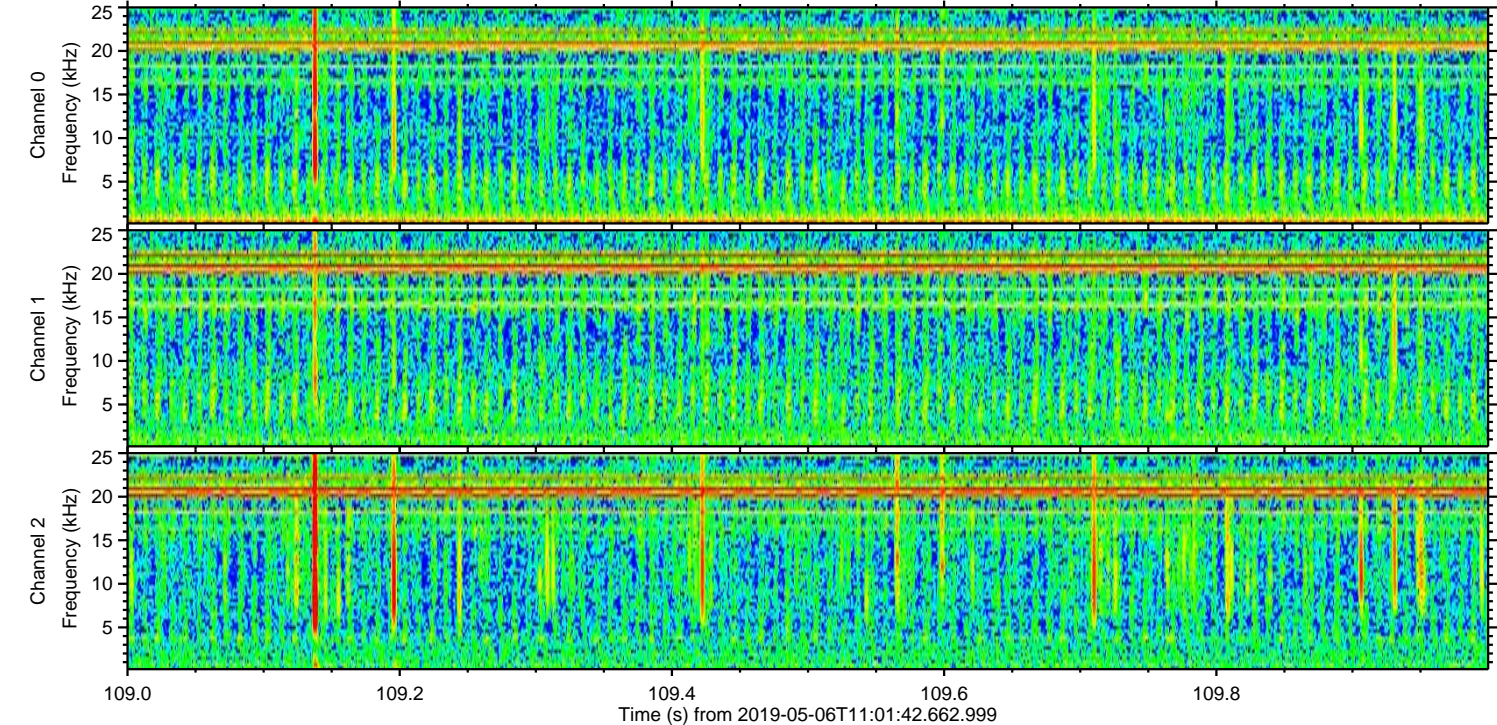
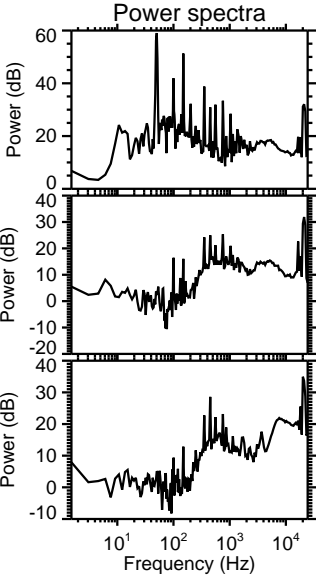
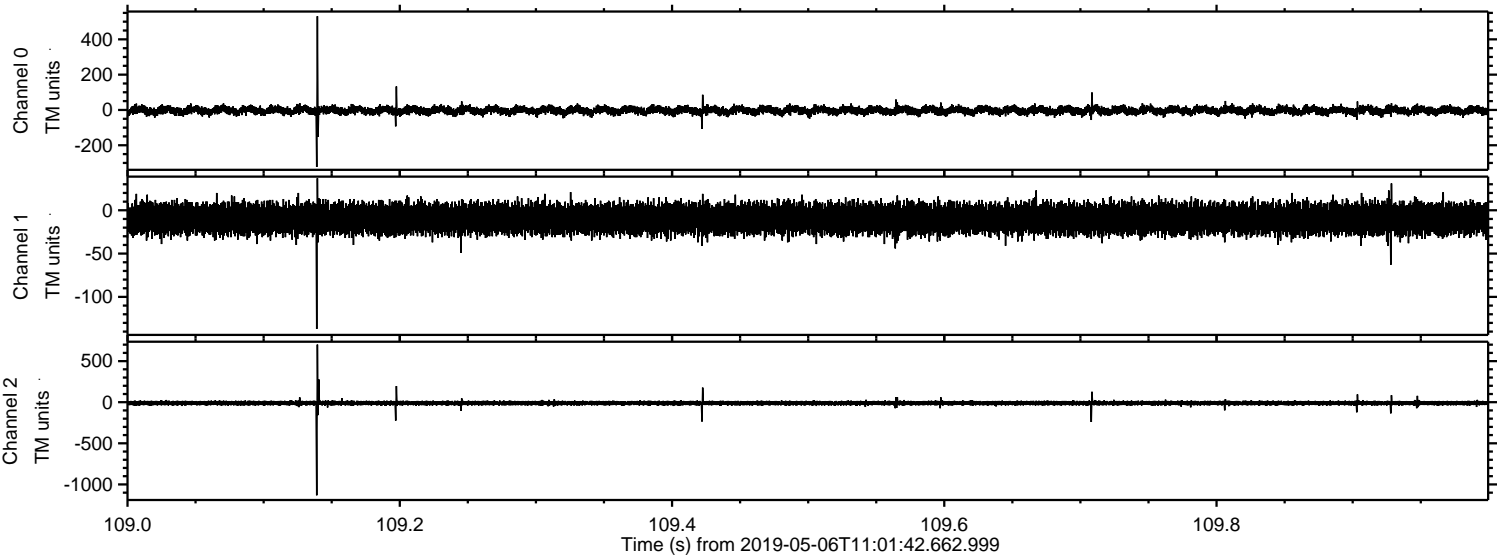
Processed Mon May 6 13:10:03 2019 by ELM ver.2012-10-06 from 001\_\_elm20190506\_110141\_\_dat00.bin





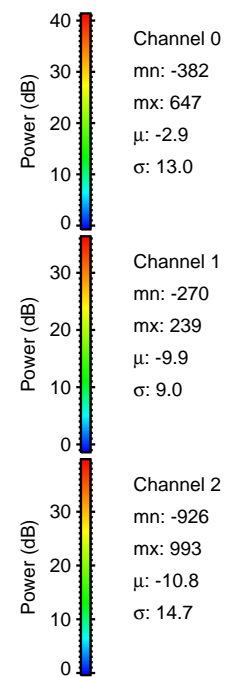
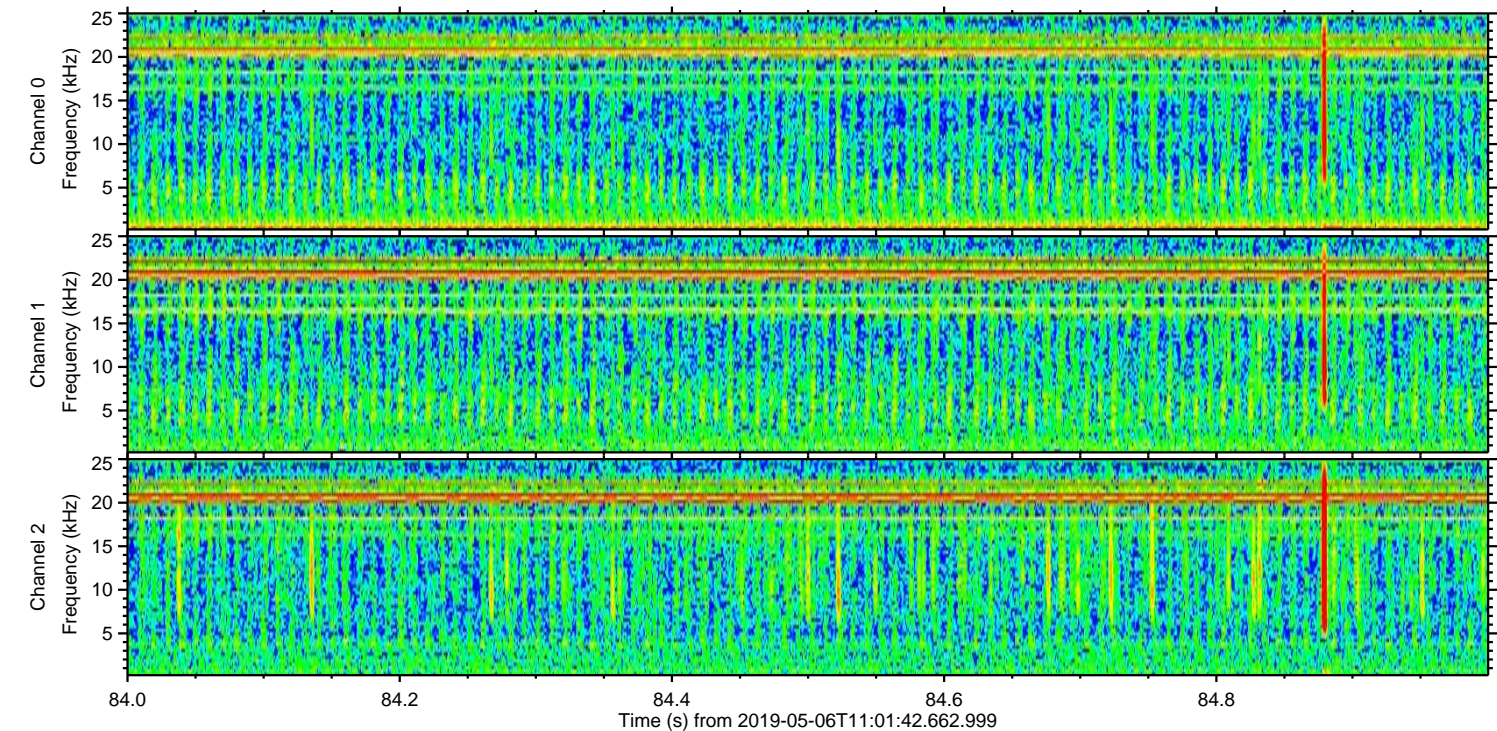
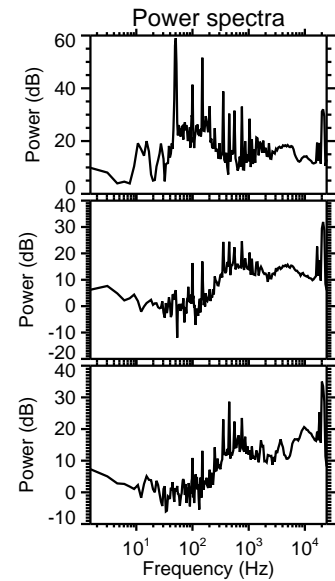
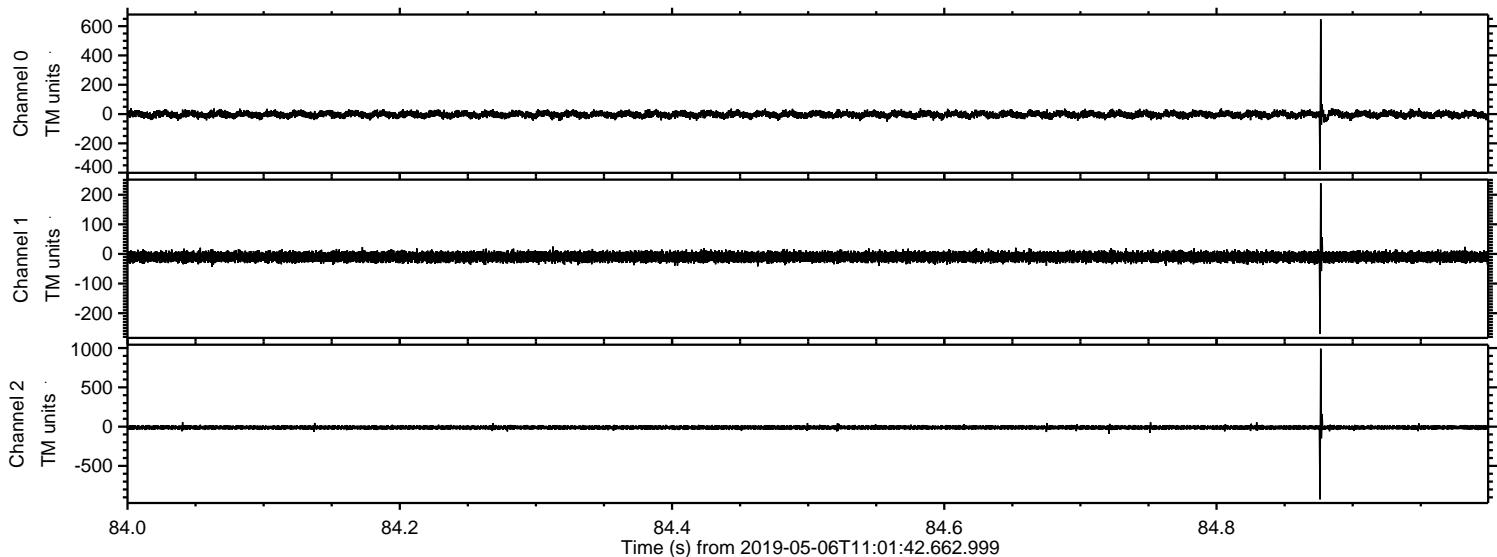
ELMAVAN 3D WAVEFORMS (Measured data sampled at 50 kHz) 51000 packets of 144 samples from 2019-05-06T11:01:42.662.999. Part 110/147

Processed Mon May 6 13:10:04 2019 by ELM ver.2012-10-06 from 001\_\_elm20190506\_110141\_\_dat00.bin



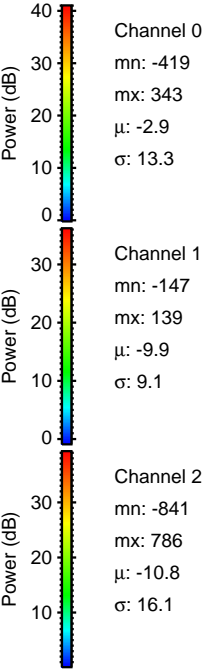
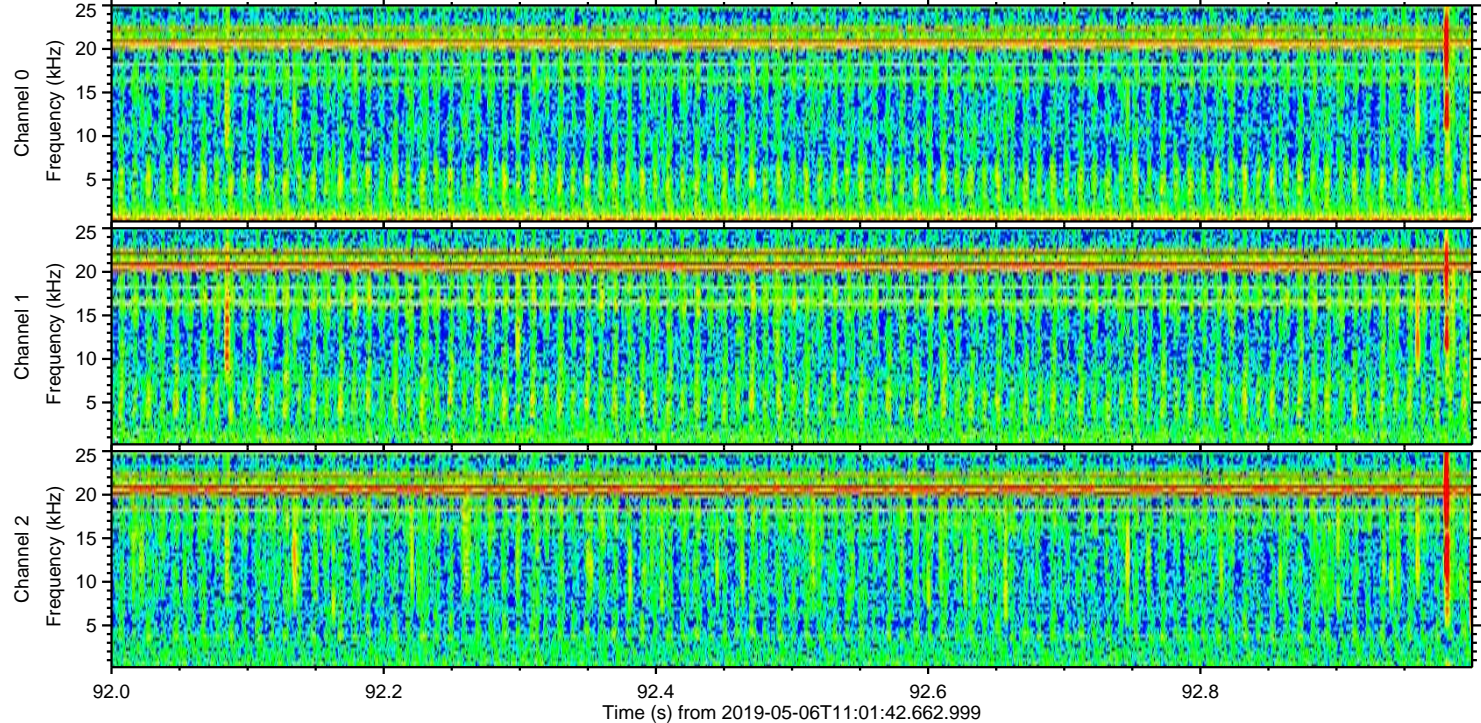
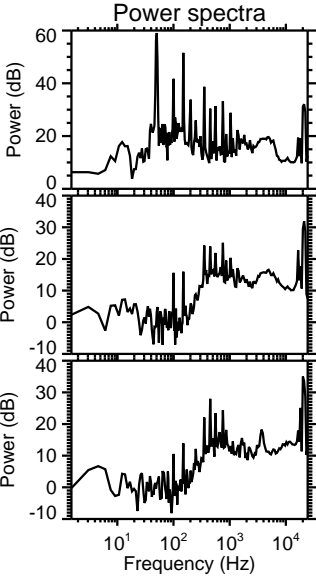
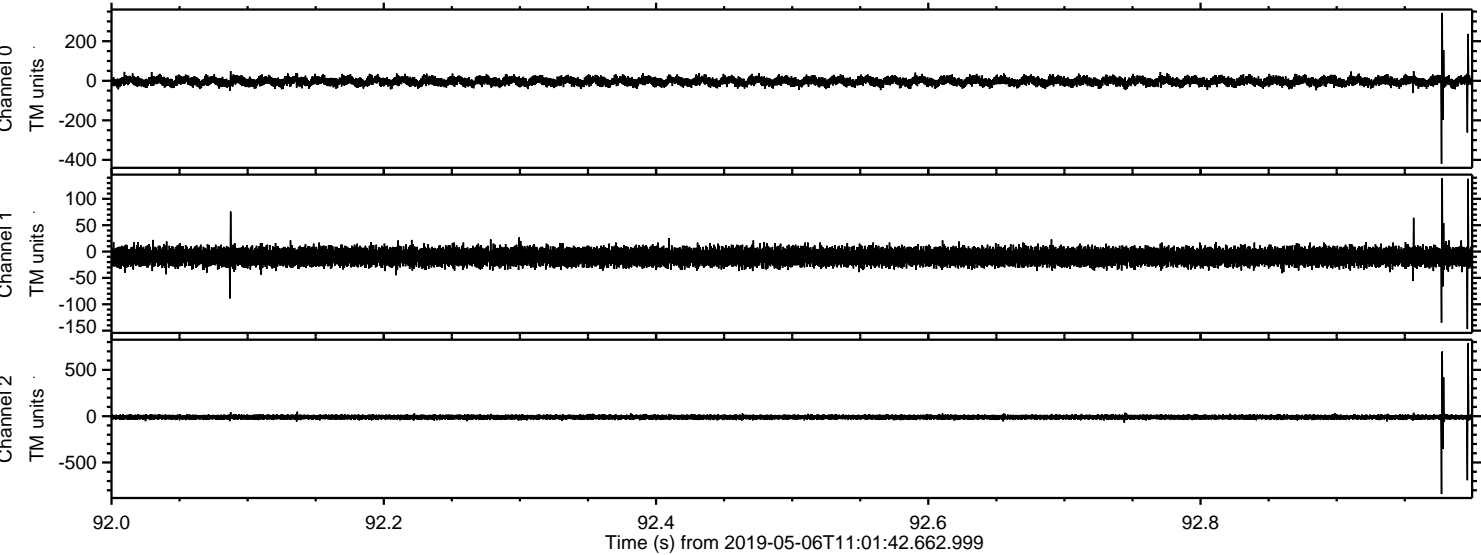


Processed Mon May 6 13:10:05 2019 by ELM ver.2012-10-06 from 001\_\_elm20190506\_110141\_\_dat00.bin





Processed Mon May 6 13:10:05 2019 by ELM ver.2012-10-06 from 001\_\_elm20190506\_110141\_\_dat00.bin





Processed Mon May 6 13:10:06 2019 by ELM ver.2012-10-06 from 001\_\_elm20190506\_110141\_\_dat00.bin

