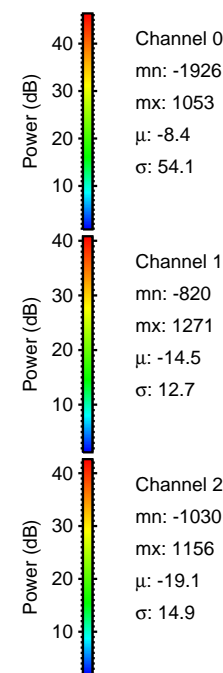
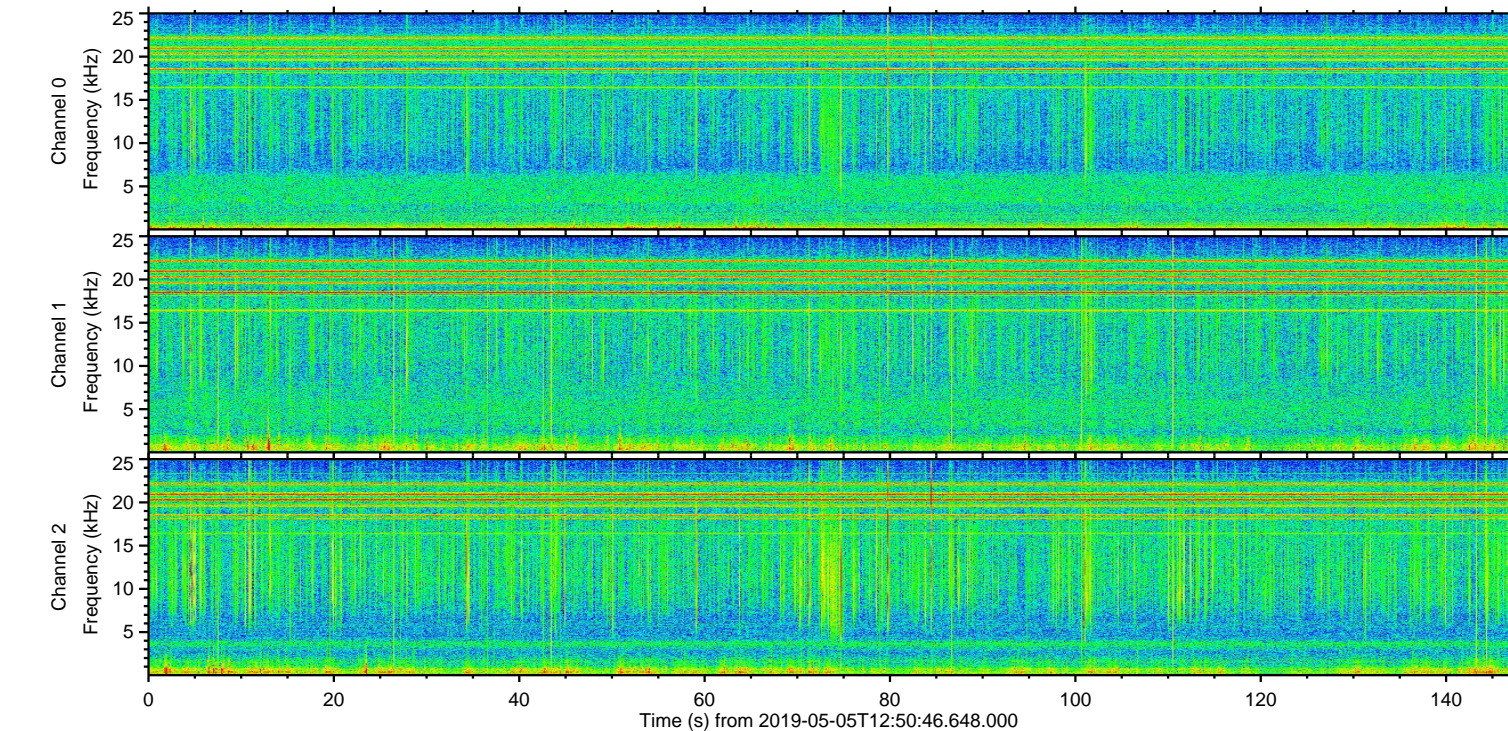
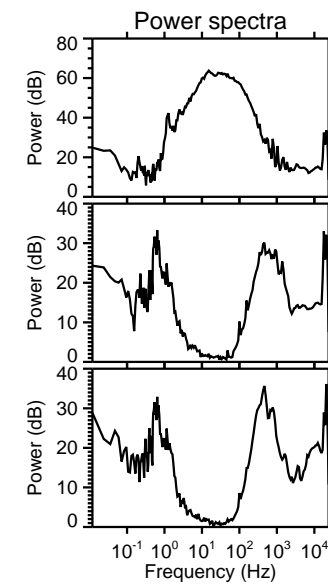
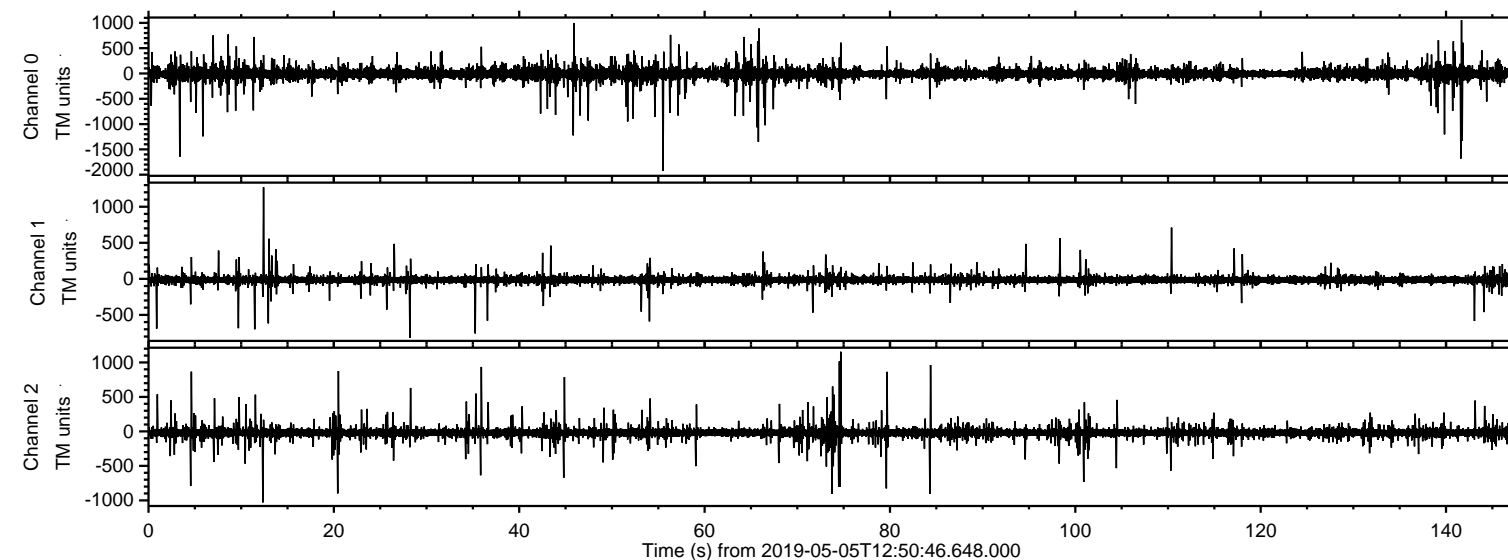
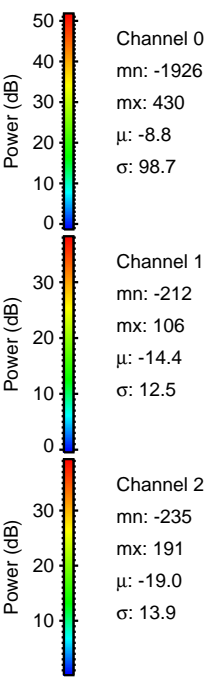
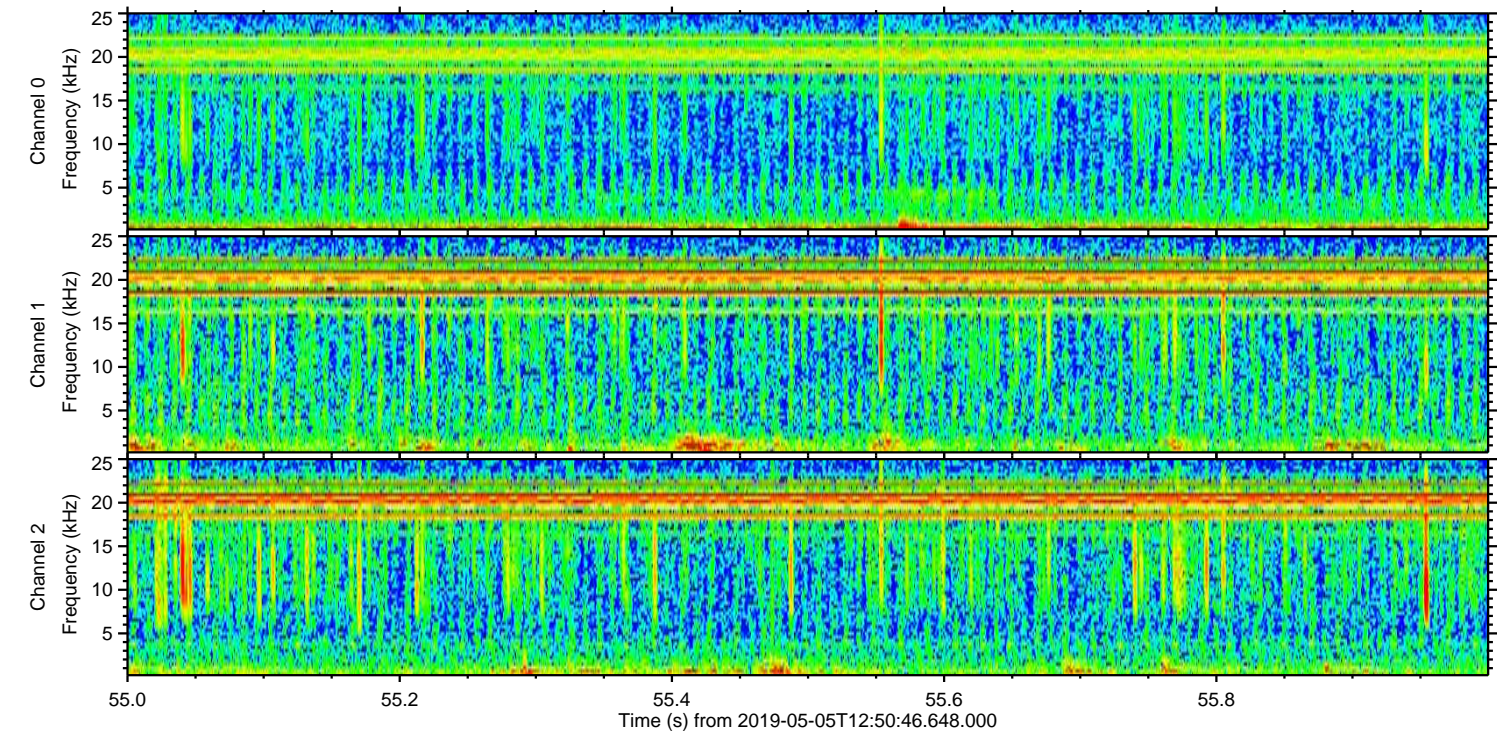
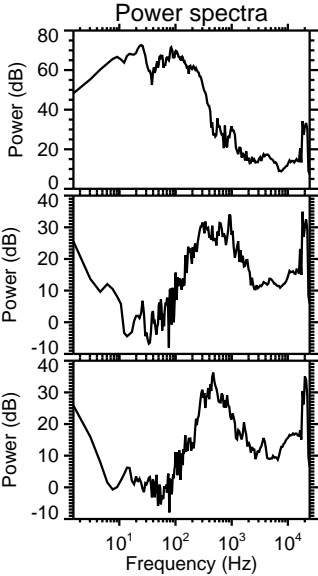
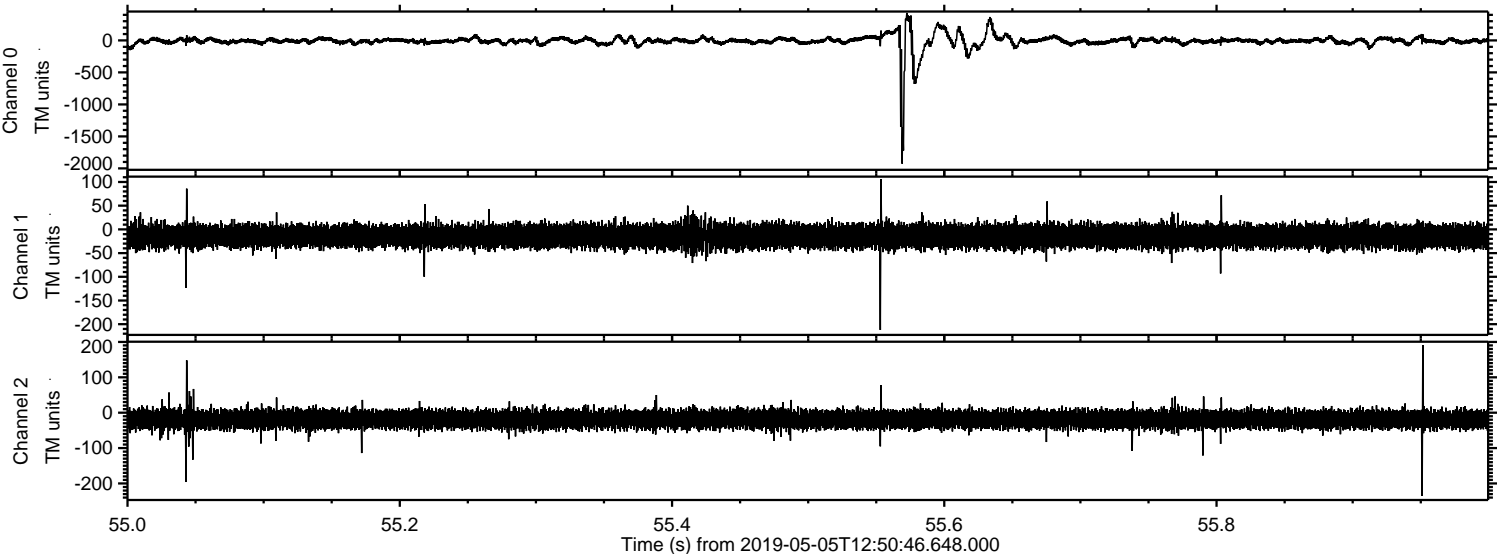


ELMAVAN 3D WAVEFORMS (Measured data sampled at 50 kHz) 51000 packets of 144 samples from 2019-05-05T12:50:46.648.000.

Processed Sun May 5 14:58:10 2019 by ELM ver.2012-10-06 from 001__elm20190505_125045__dat00.bin

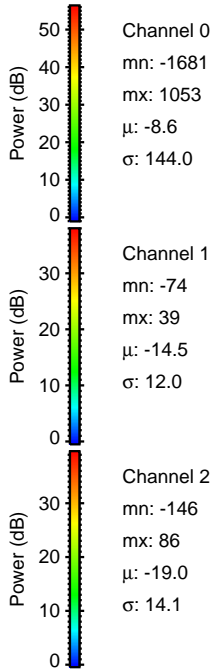
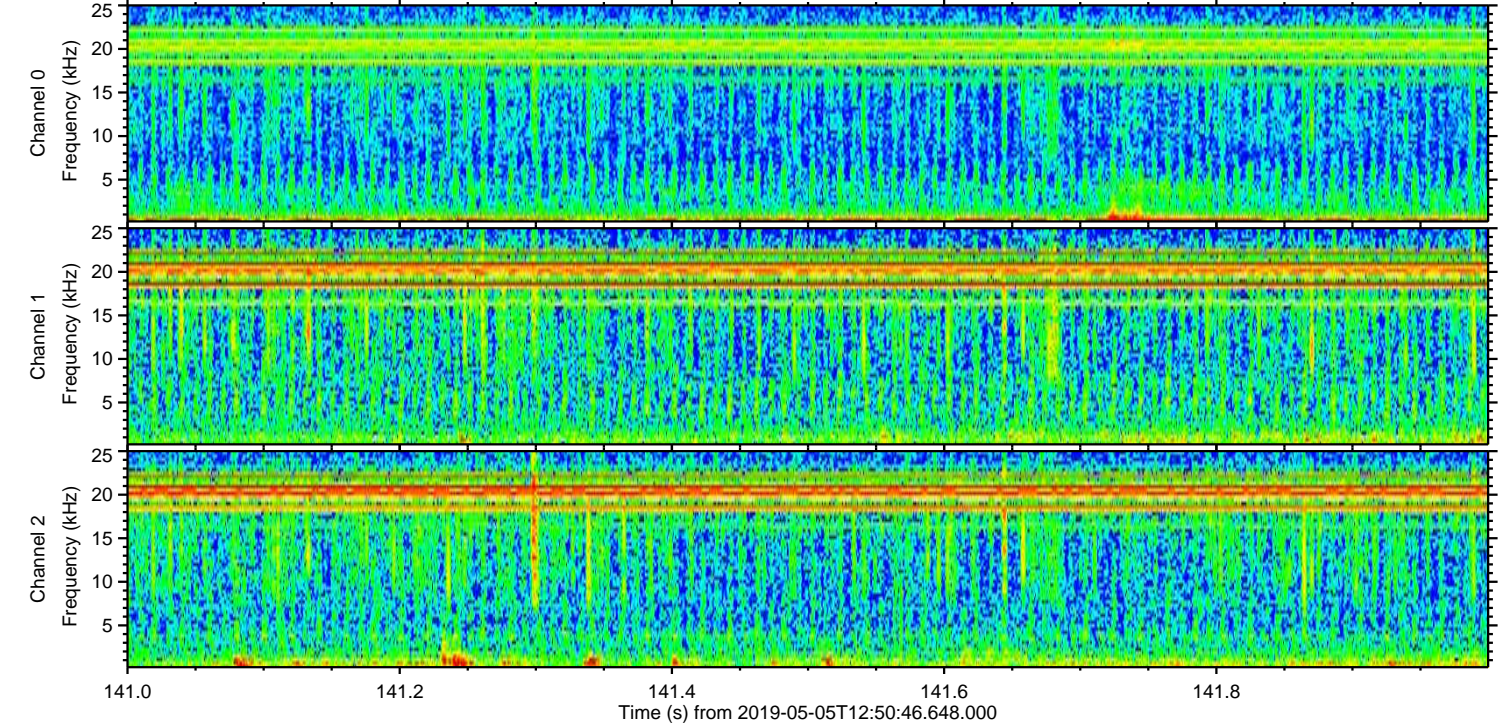
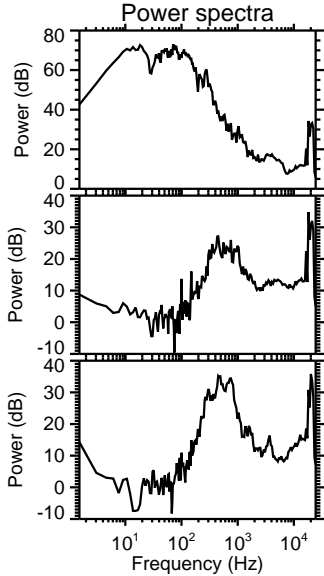
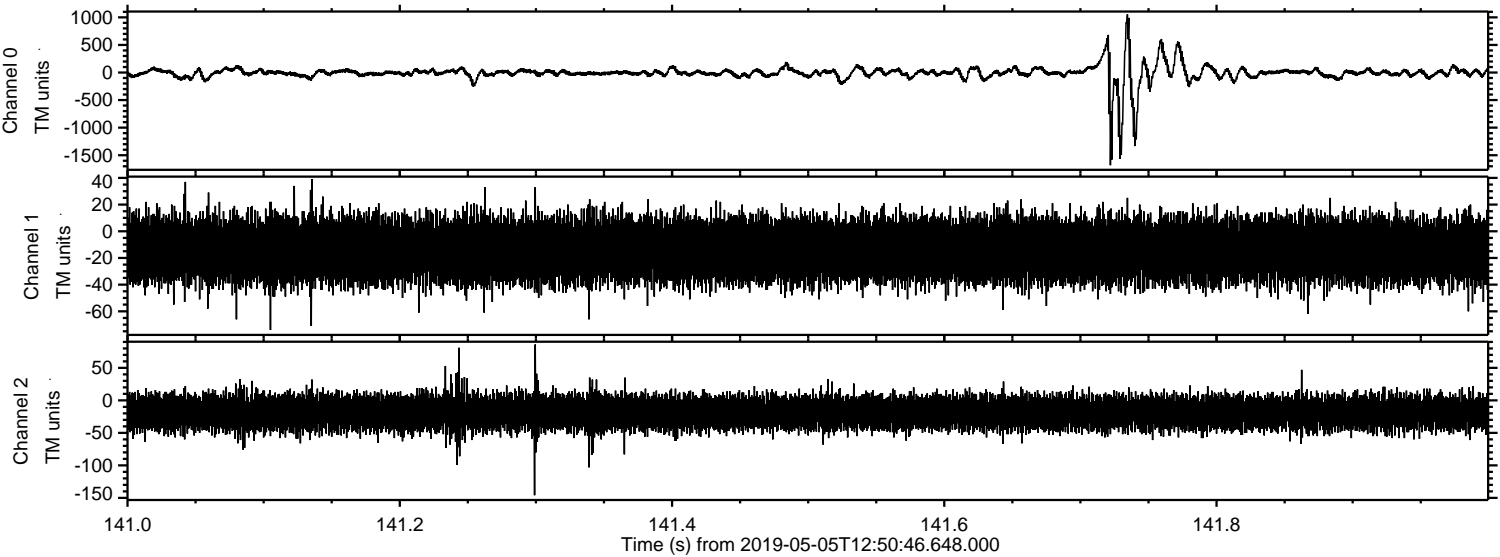


Processed Sun May 5 14:58:16 2019 by ELM ver.2012-10-06 from 001__elm20190505_125045__dat00.bin

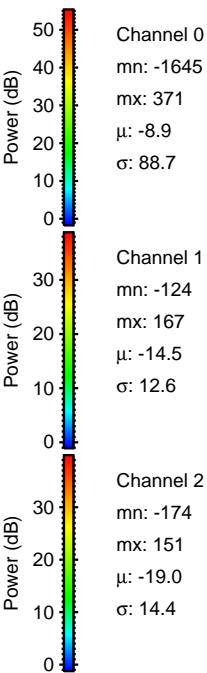
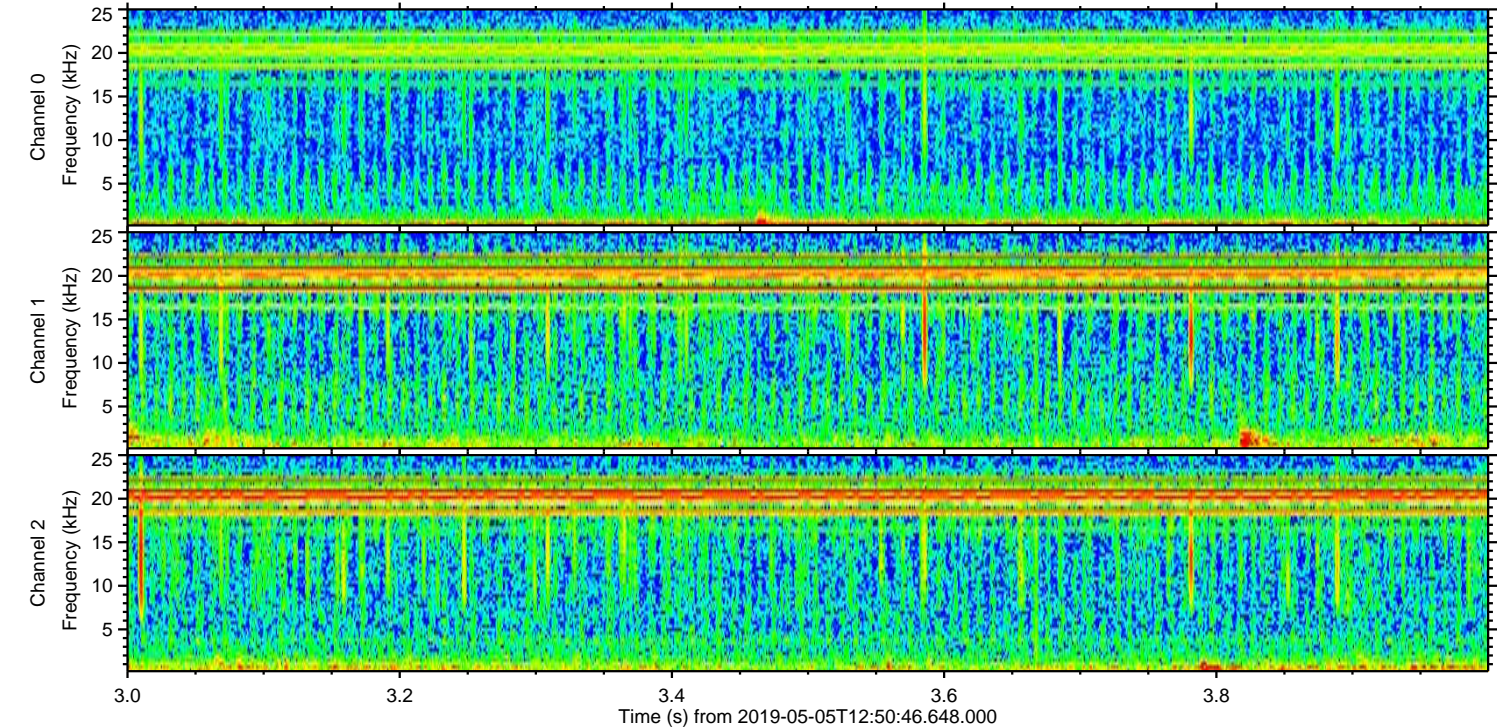
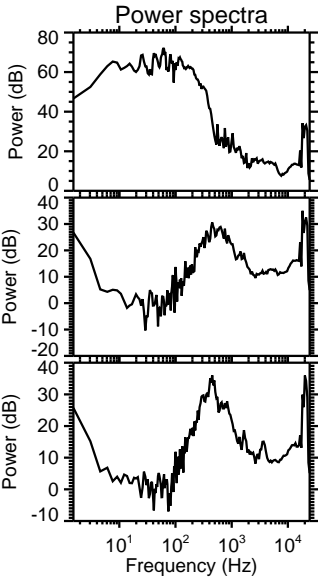
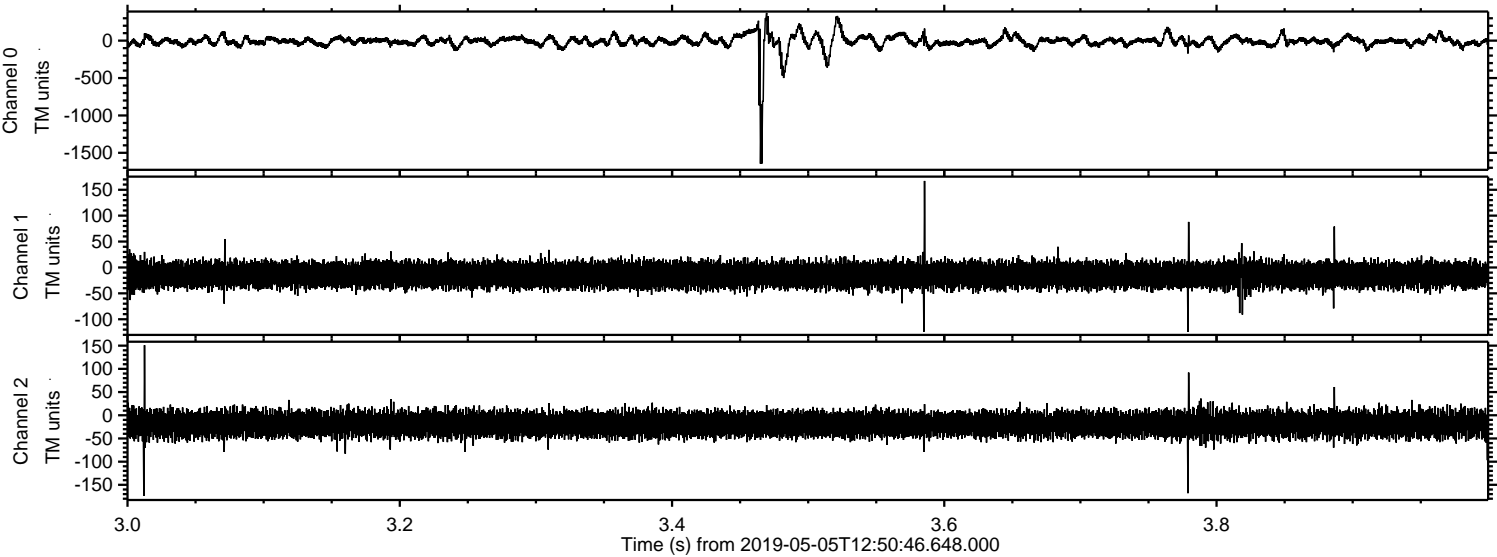


ELMAVAN 3D WAVEFORMS (Measured data sampled at 50 kHz) 51000 packets of 144 samples from 2019-05-05T12:50:46.648.000. Part 142/147

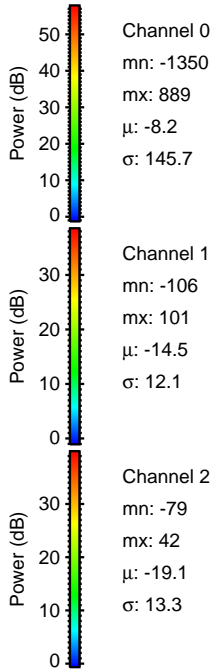
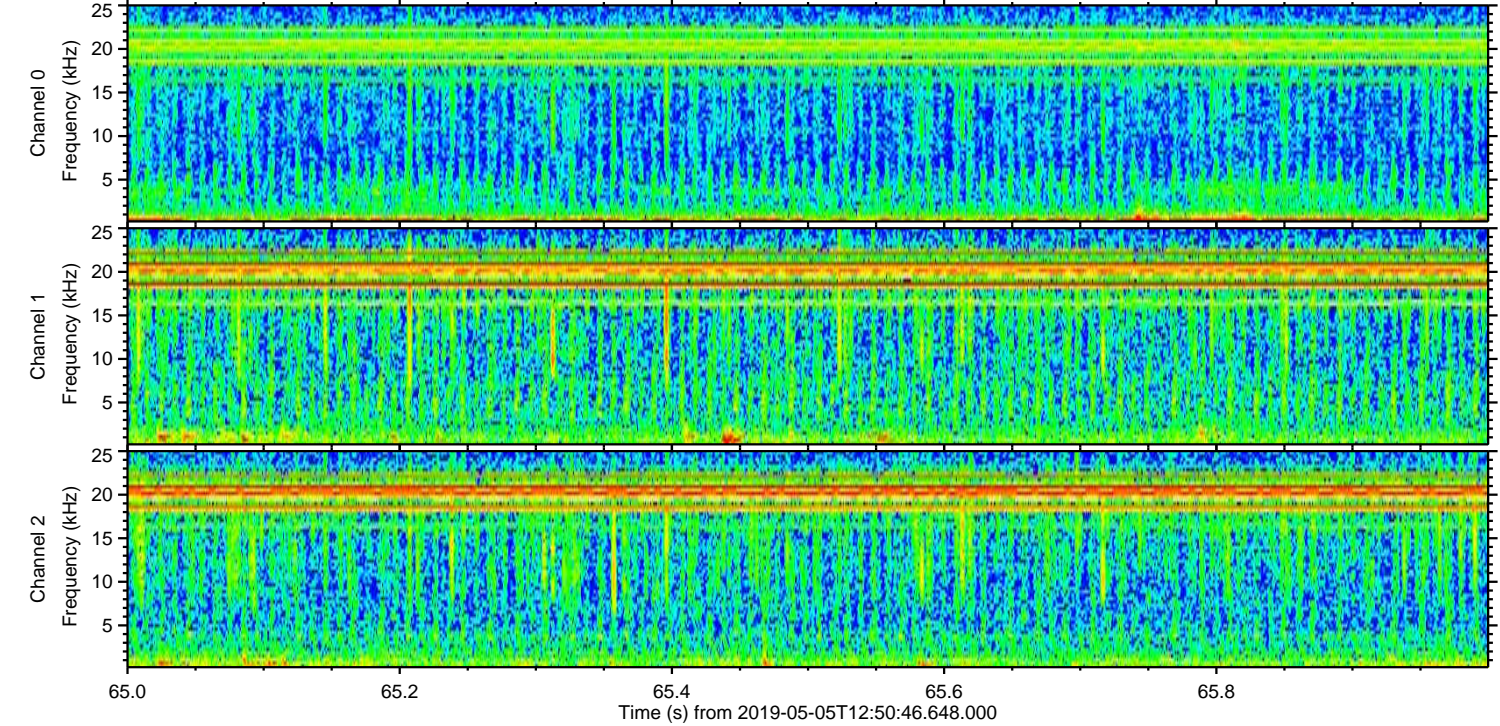
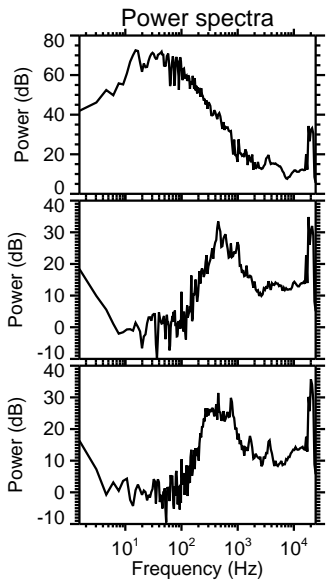
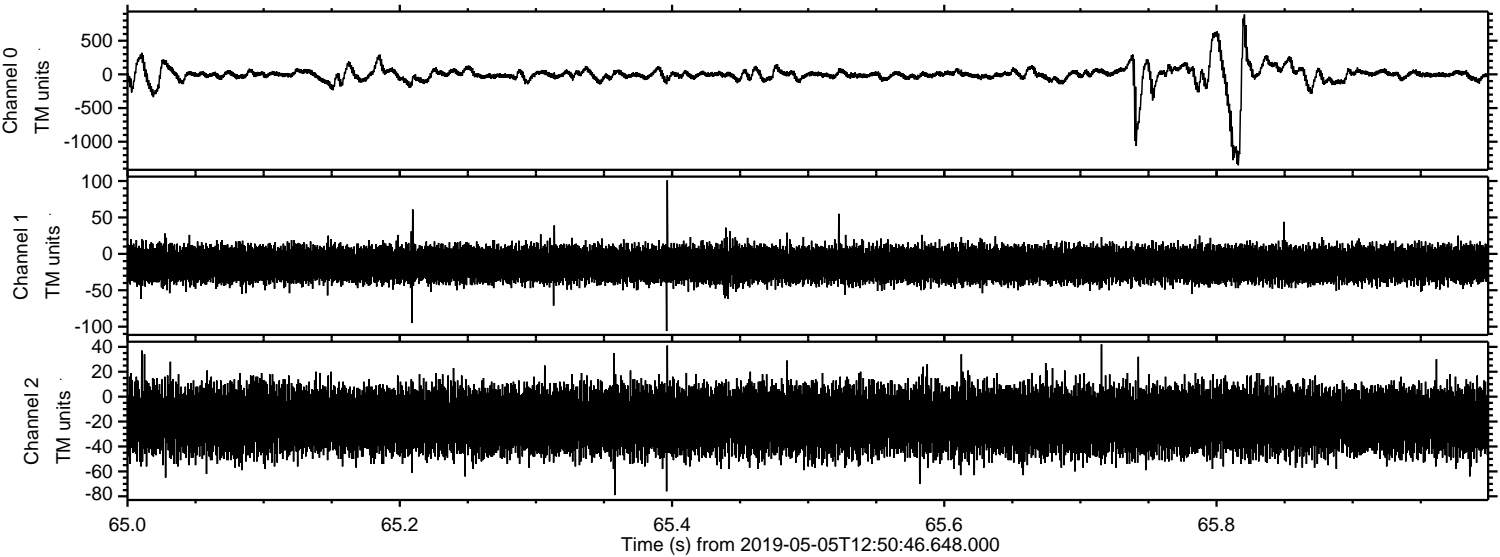
Processed Sun May 5 14:58:16 2019 by ELM ver.2012-10-06 from 001__elm20190505_125045__dat00.bin



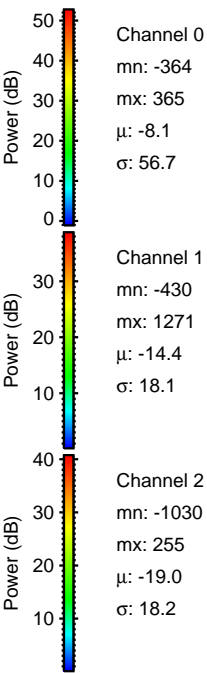
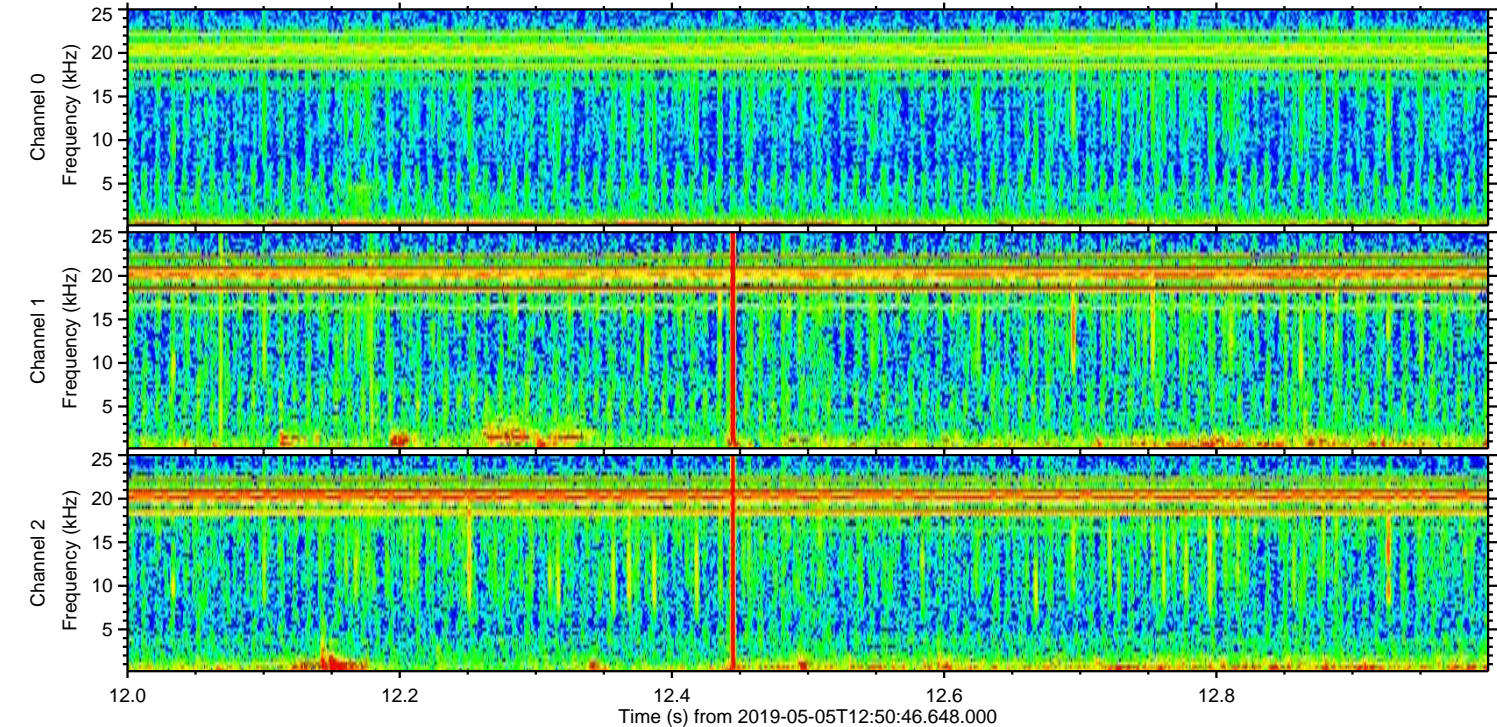
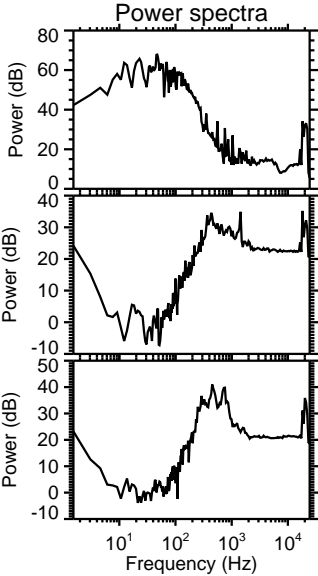
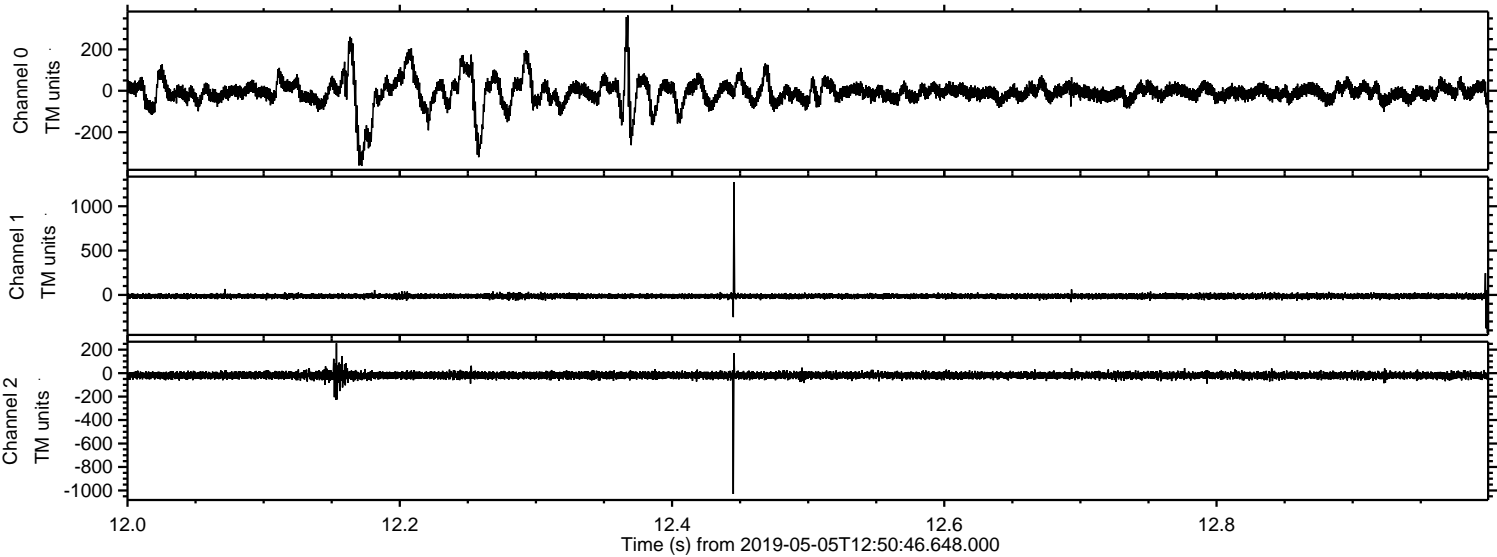
Processed Sun May 5 14:58:17 2019 by ELM ver.2012-10-06 from 001__elm20190505_125045__dat00.bin



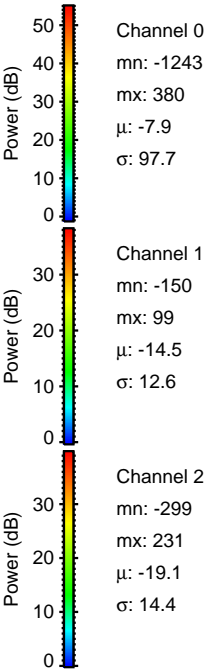
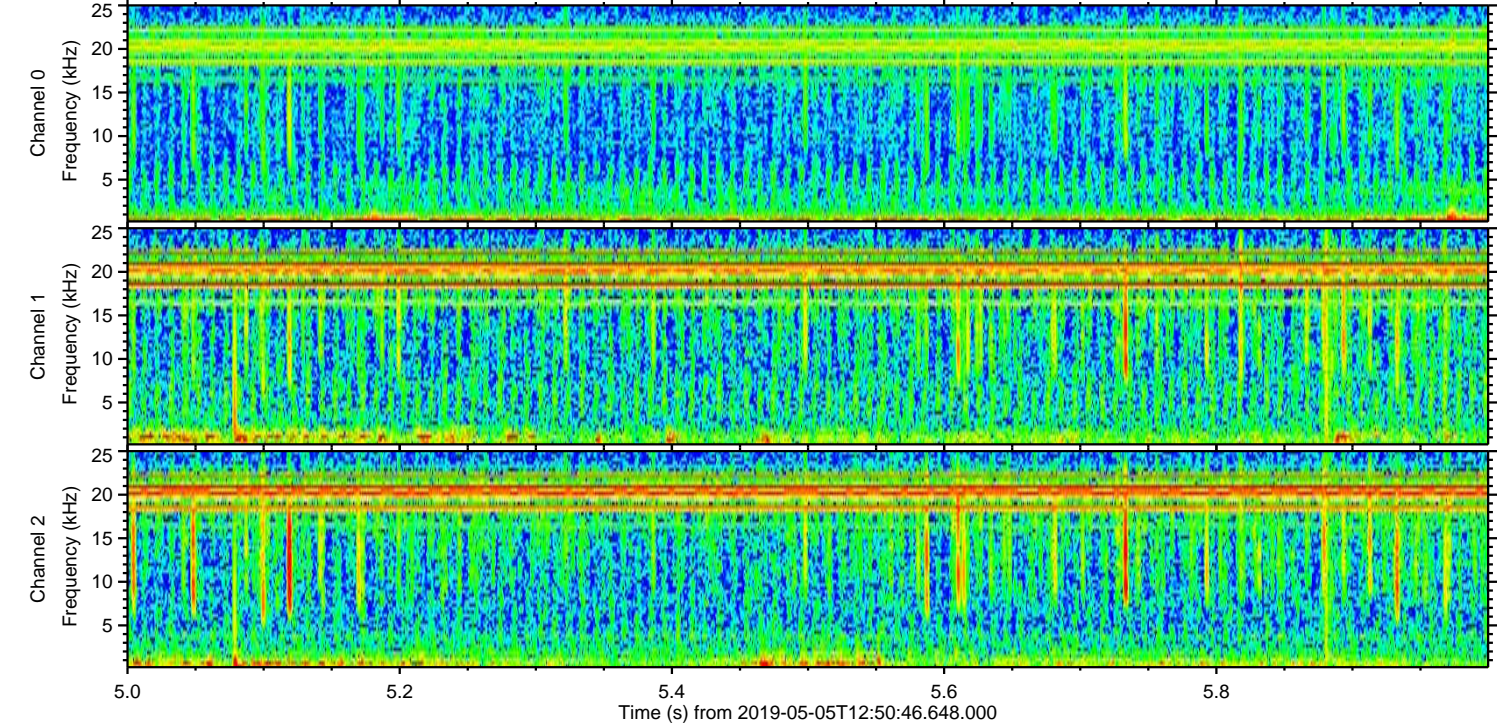
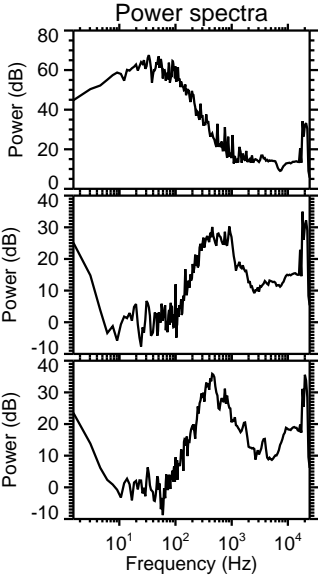
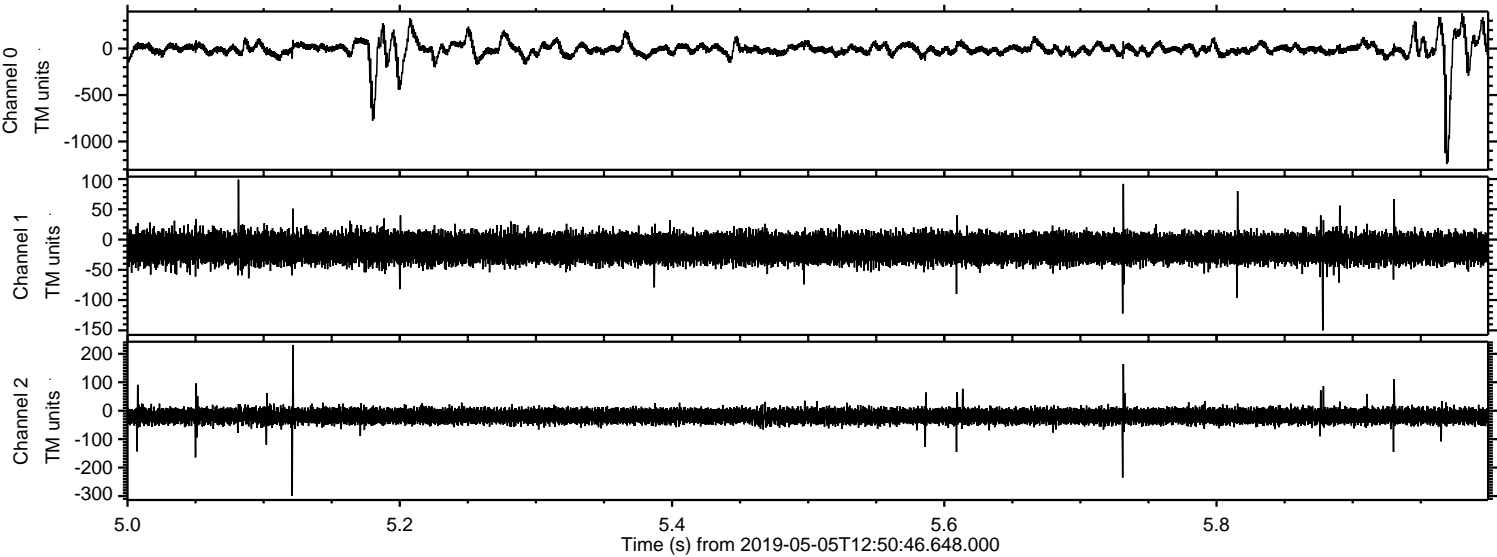
Processed Sun May 5 14:58:18 2019 by ELM ver.2012-10-06 from 001__elm20190505_125045__dat00.bin



Processed Sun May 5 14:58:18 2019 by ELM ver.2012-10-06 from 001__elm20190505_125045__dat00.bin

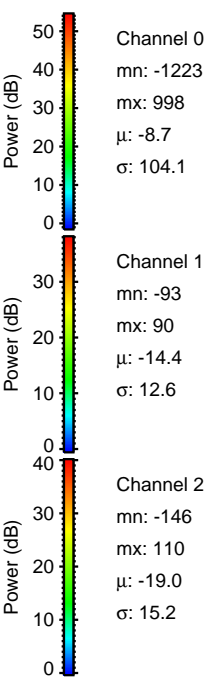
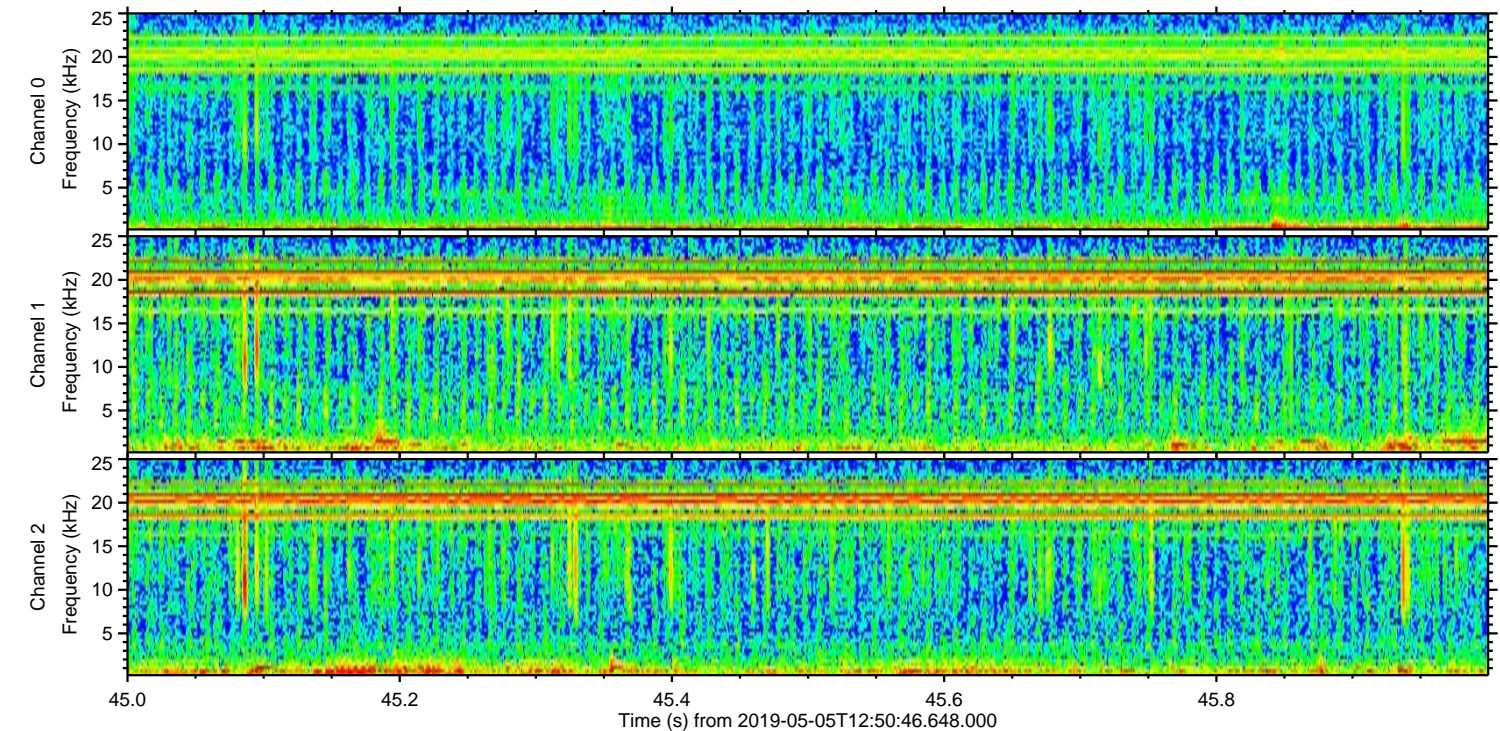
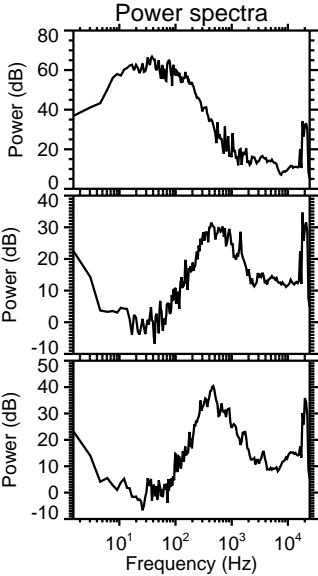
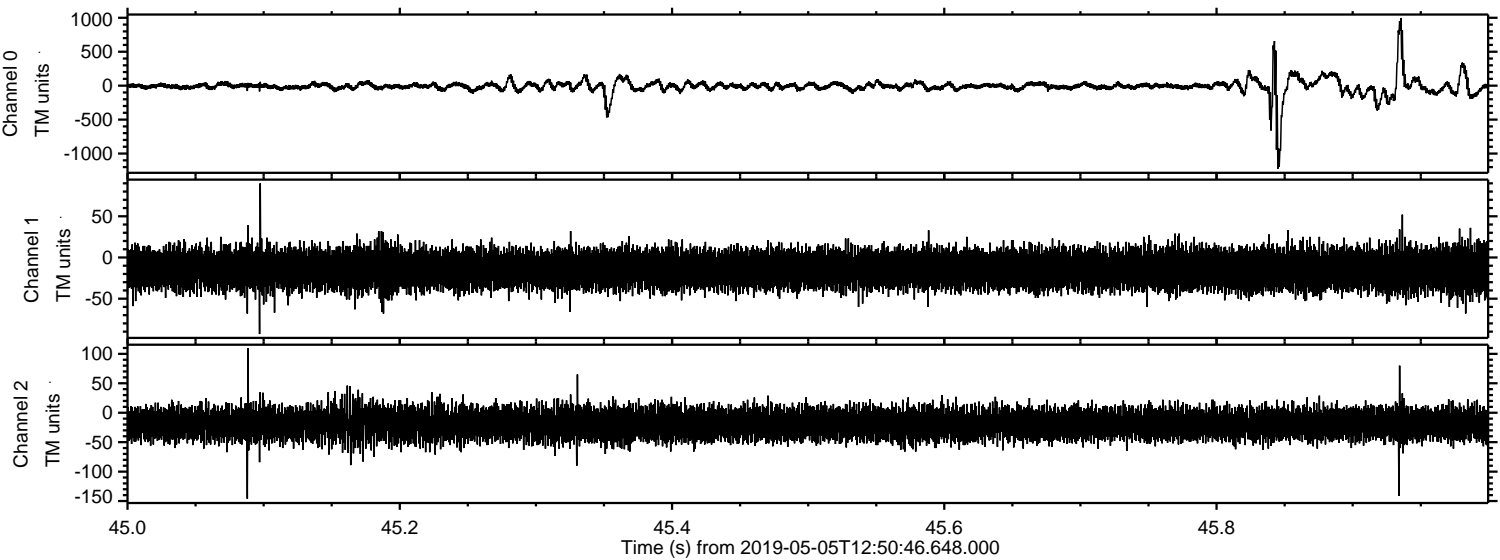


Processed Sun May 5 14:58:19 2019 by ELM ver.2012-10-06 from 001__elm20190505_125045__dat00.bin



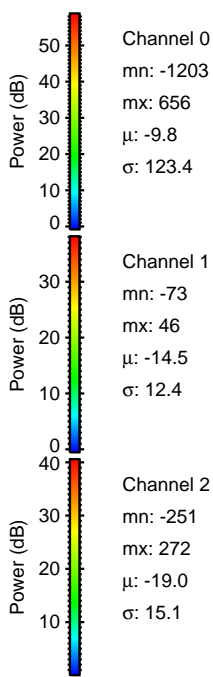
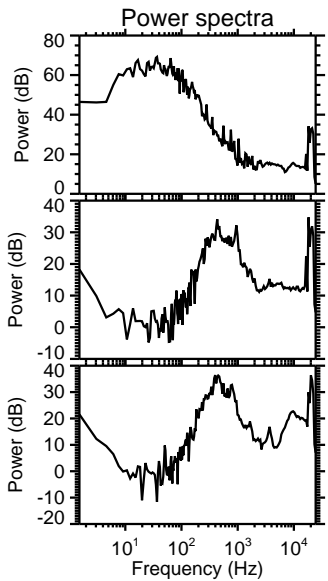
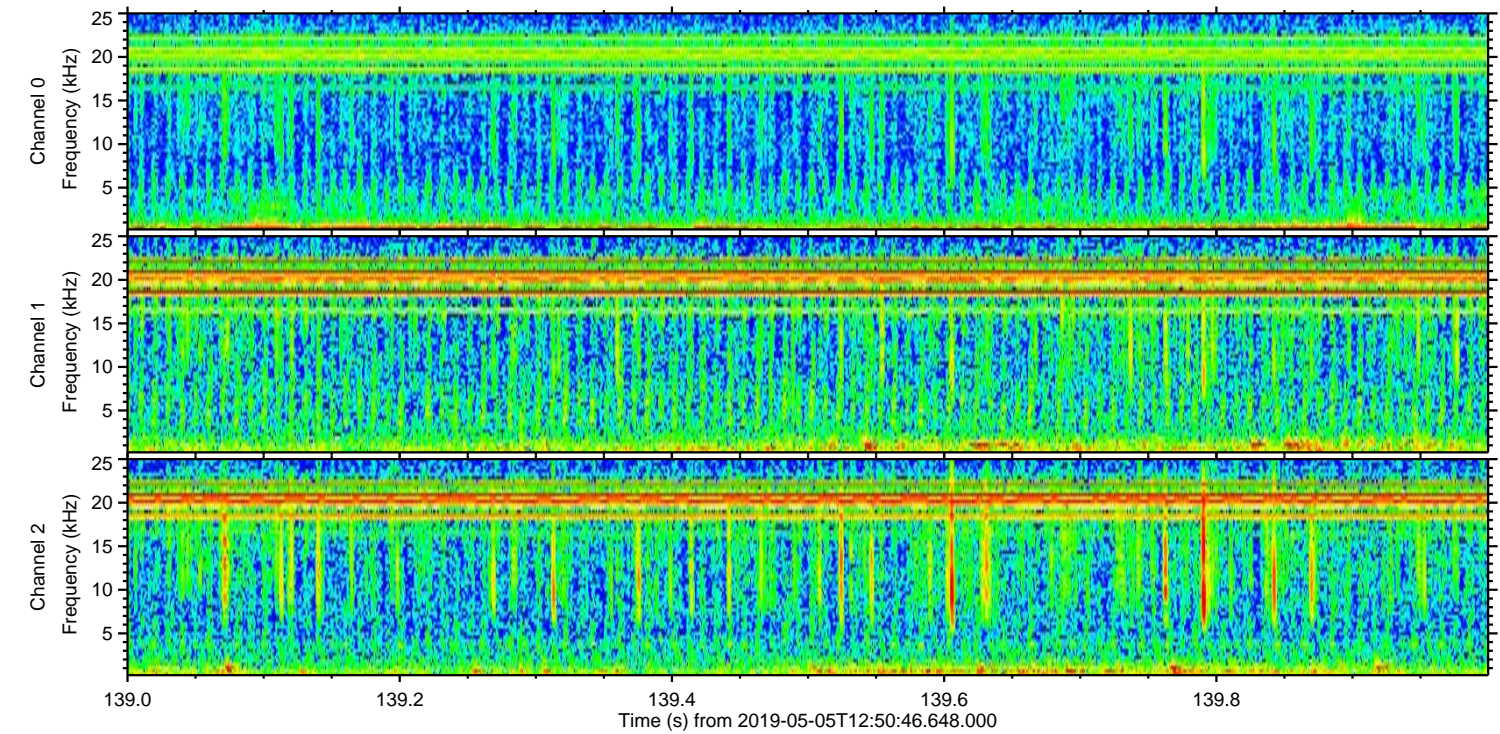
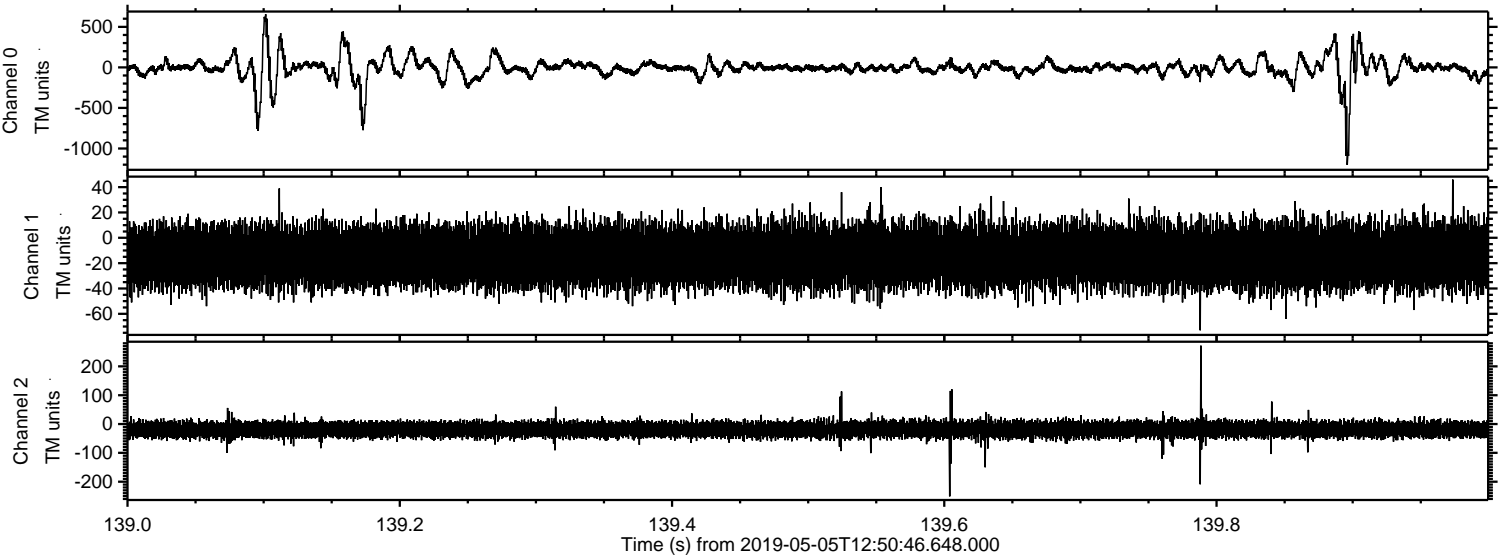
ELMAVAN 3D WAVEFORMS (Measured data sampled at 50 kHz) 51000 packets of 144 samples from 2019-05-05T12:50:46.648.000. Part 46/147

Processed Sun May 5 14:58:20 2019 by ELM ver.2012-10-06 from 001__elm20190505_125045__dat00.bin



ELMAVAN 3D WAVEFORMS (Measured data sampled at 50 kHz) 51000 packets of 144 samples from 2019-05-05T12:50:46.648.000. Part 140/147

Processed Sun May 5 14:58:20 2019 by ELM ver.2012-10-06 from 001__elm20190505_125045__dat00.bin



Channel 0
mn: -1203
mx: 656
 μ : -9.8
 σ : 123.4

Channel 1
mn: -73
mx: 46
 μ : -14.5
 σ : 12.4

Channel 2
mn: -251
mx: 272
 μ : -19.0
 σ : 15.1

Processed Sun May 5 14:58:21 2019 by ELM ver.2012-10-06 from 001__elm20190505_125045__dat00.bin

