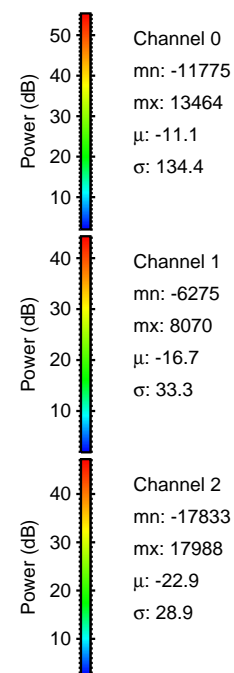
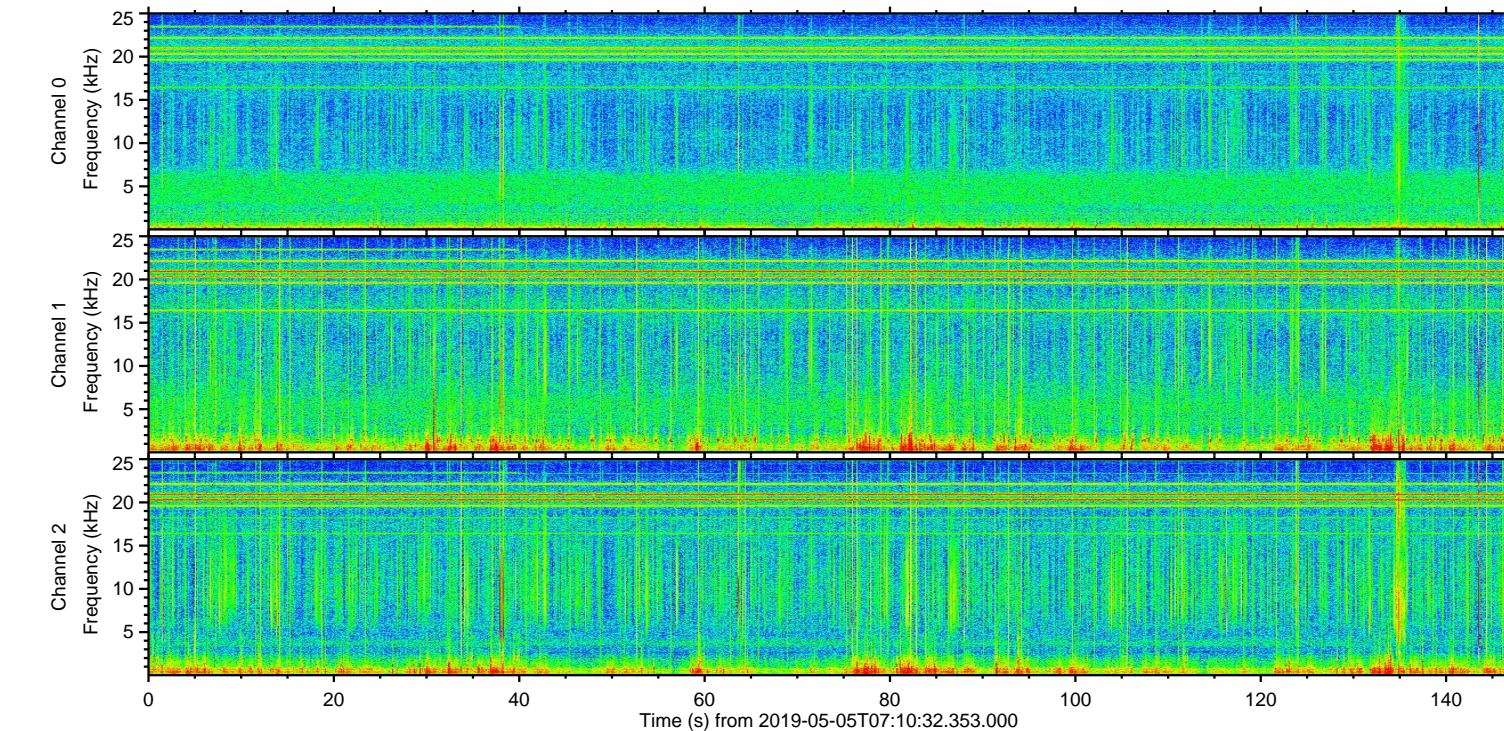
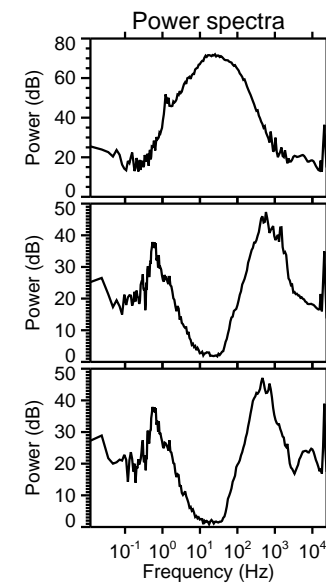
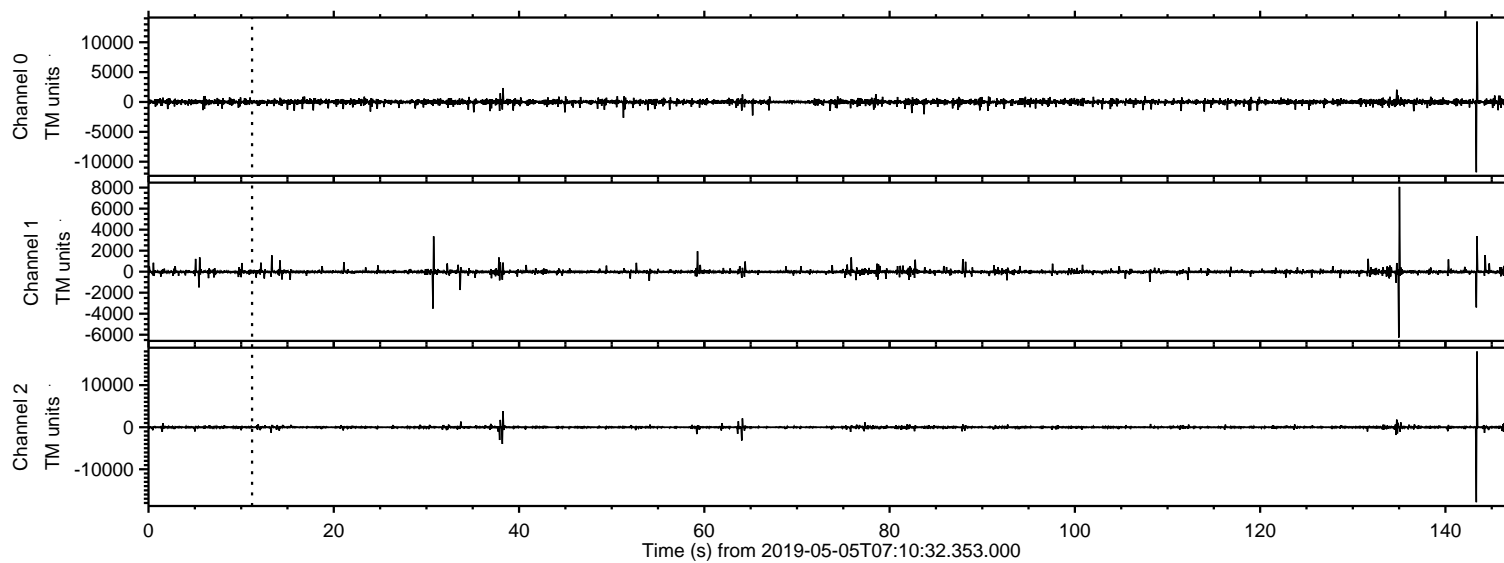


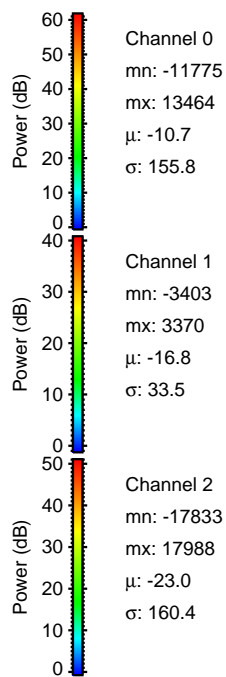
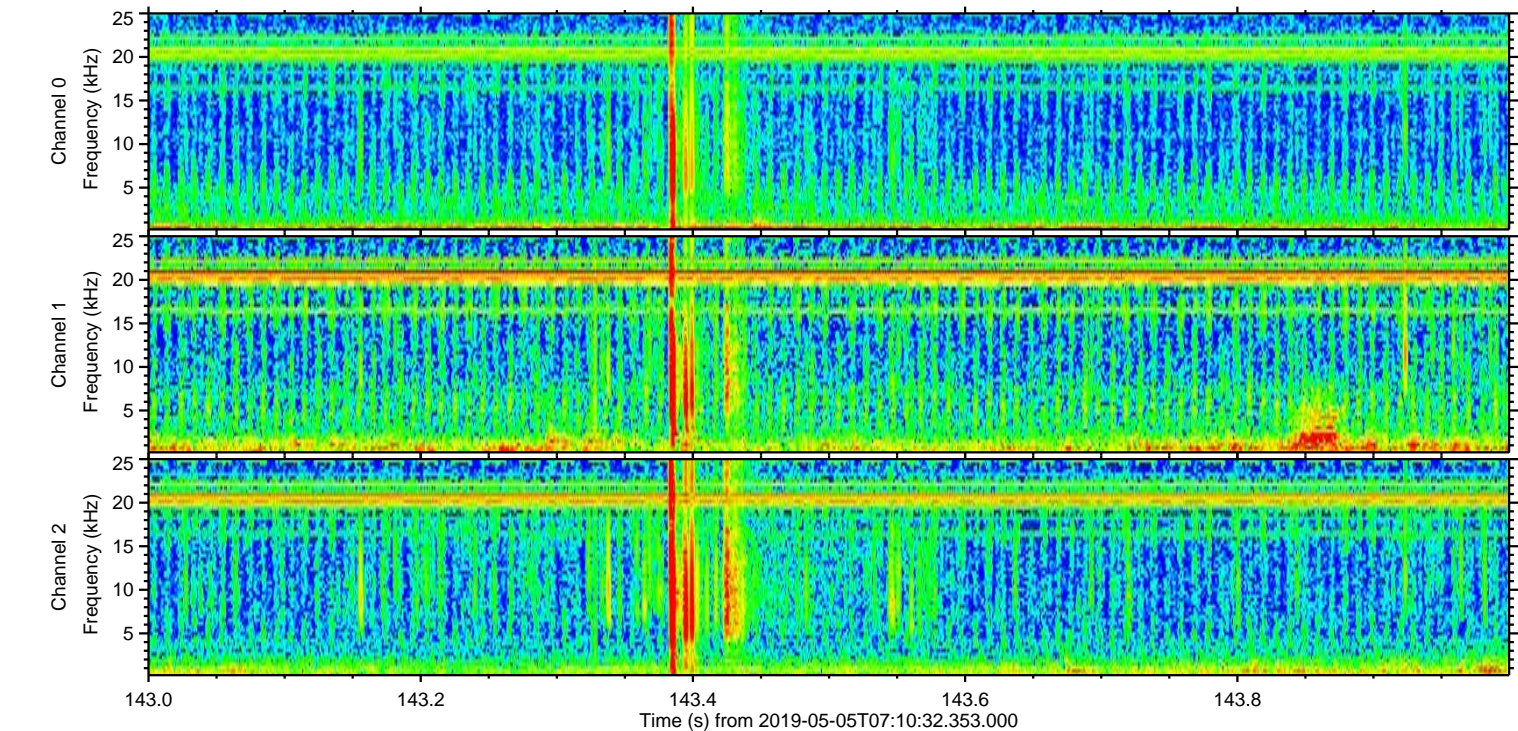
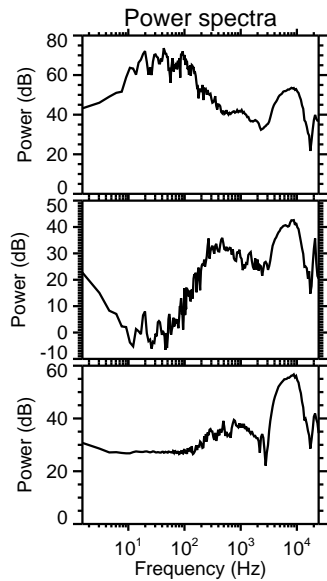
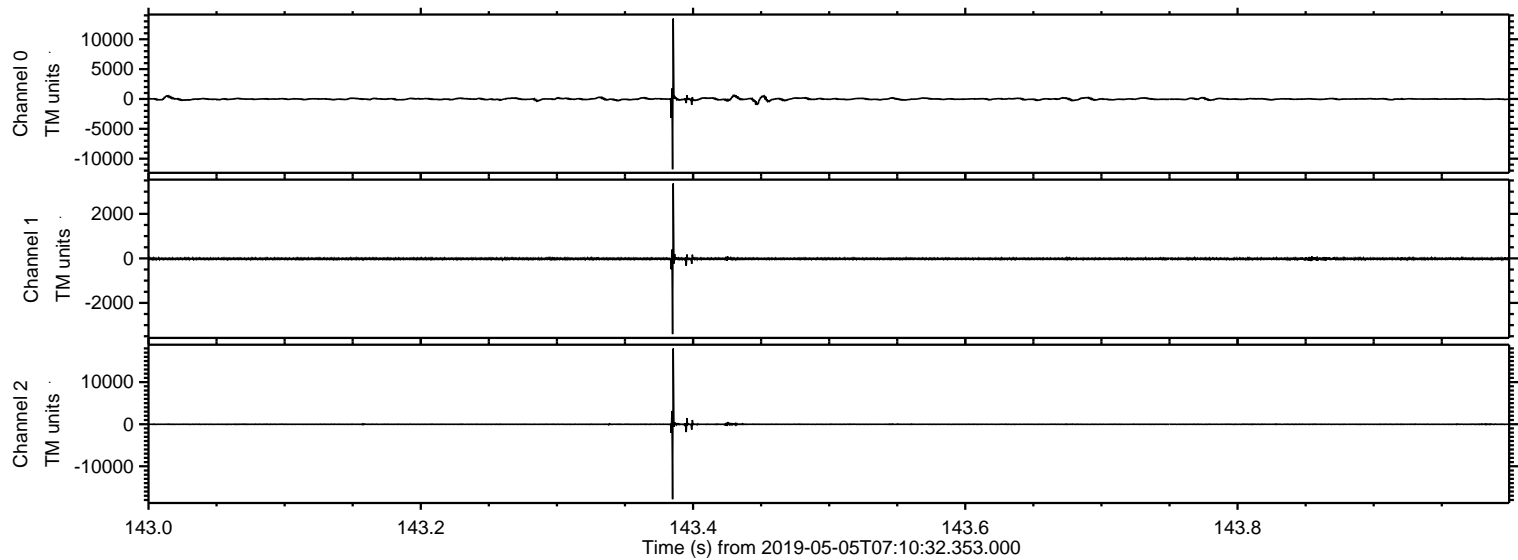
ELMAVAN 3D WAVEFORMS (Measured data sampled at 50 kHz) 50999 packets of 144 samples from 2019-05-05T07:10:32.353.000.

Processed Sun May 5 09:17:42 2019 by ELM ver.2012-10-06 from 001__elm20190505_071031__dat00.bin



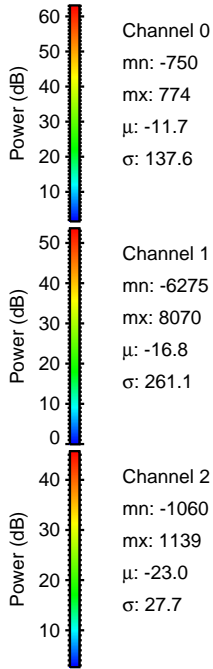
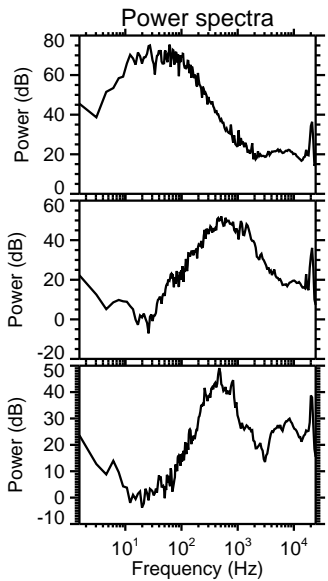
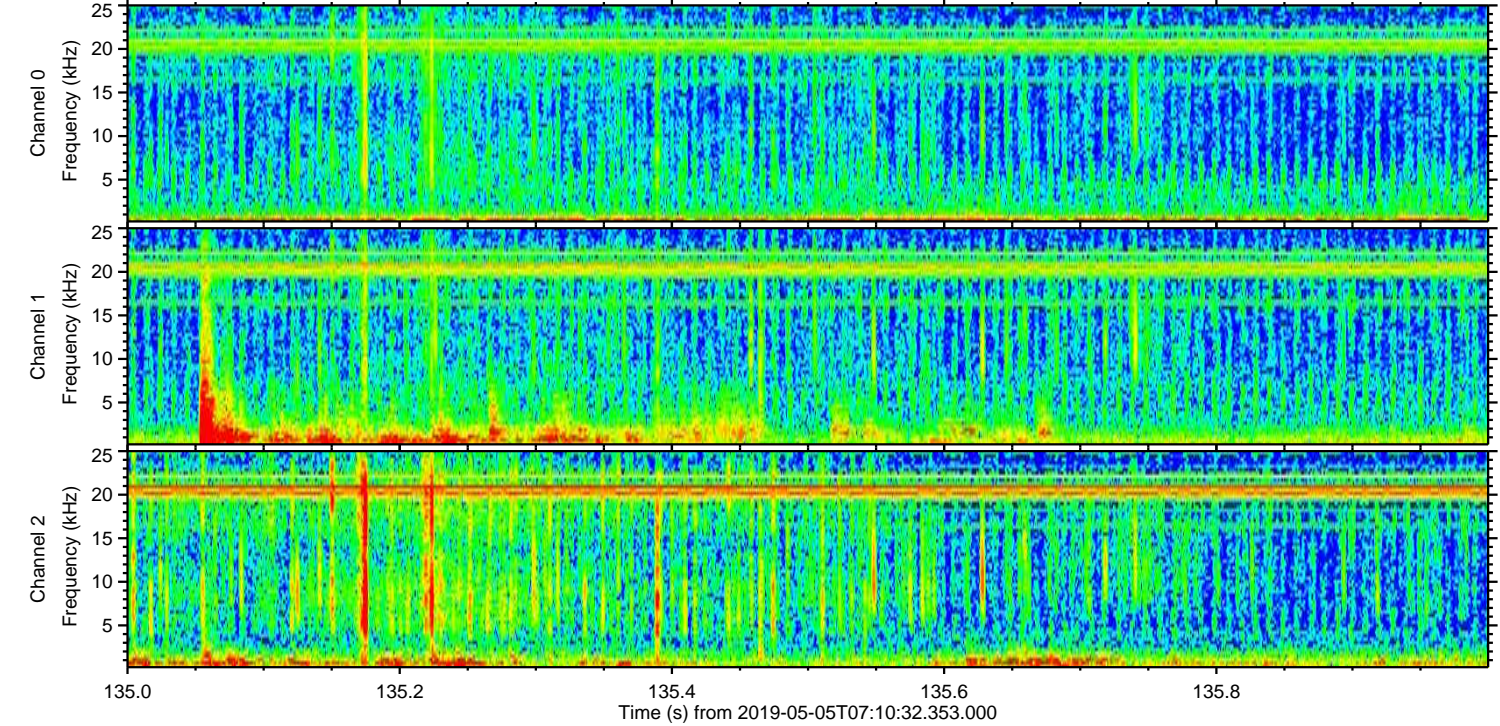
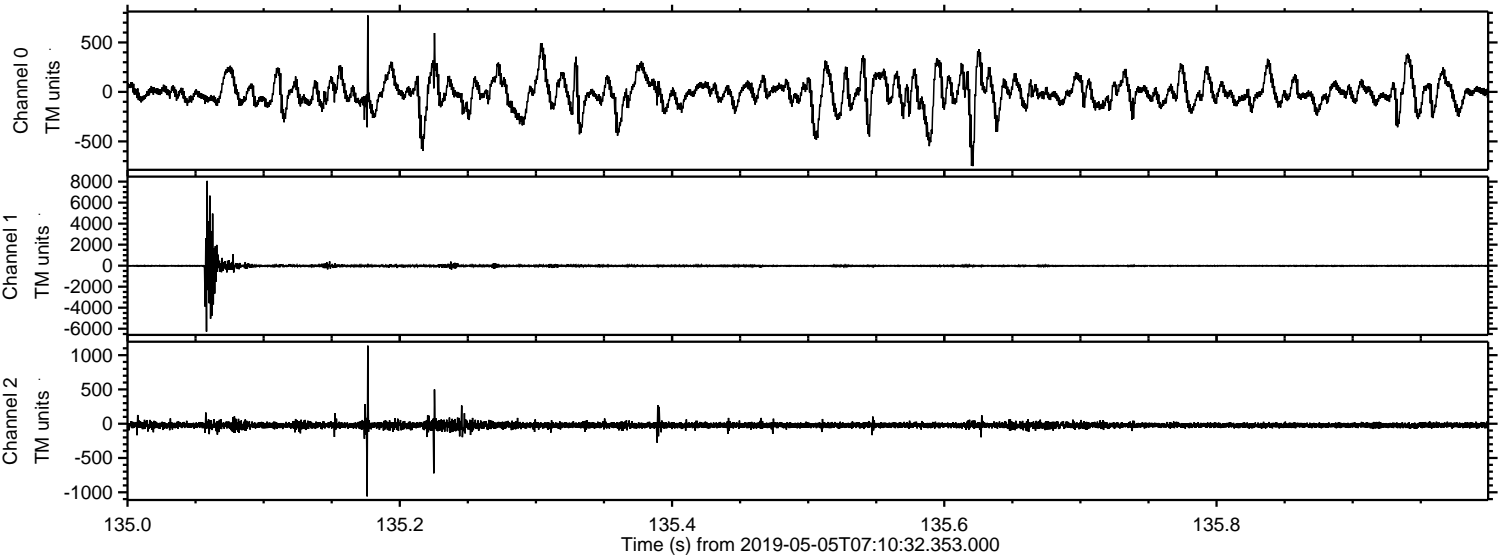
ELMAVAN 3D WAVEFORMS (Measured data sampled at 50 kHz) 50999 packets of 144 samples from 2019-05-05T07:10:32.353.000. Part 144/147

Processed Sun May 5 09:17:48 2019 by ELM ver.2012-10-06 from 001__elm20190505_071031__dat00.bin



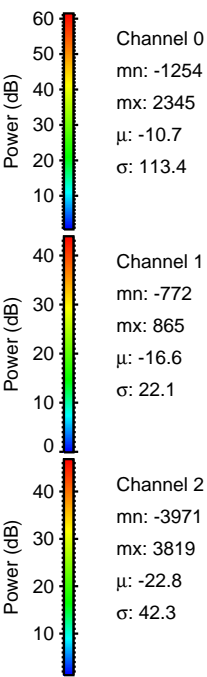
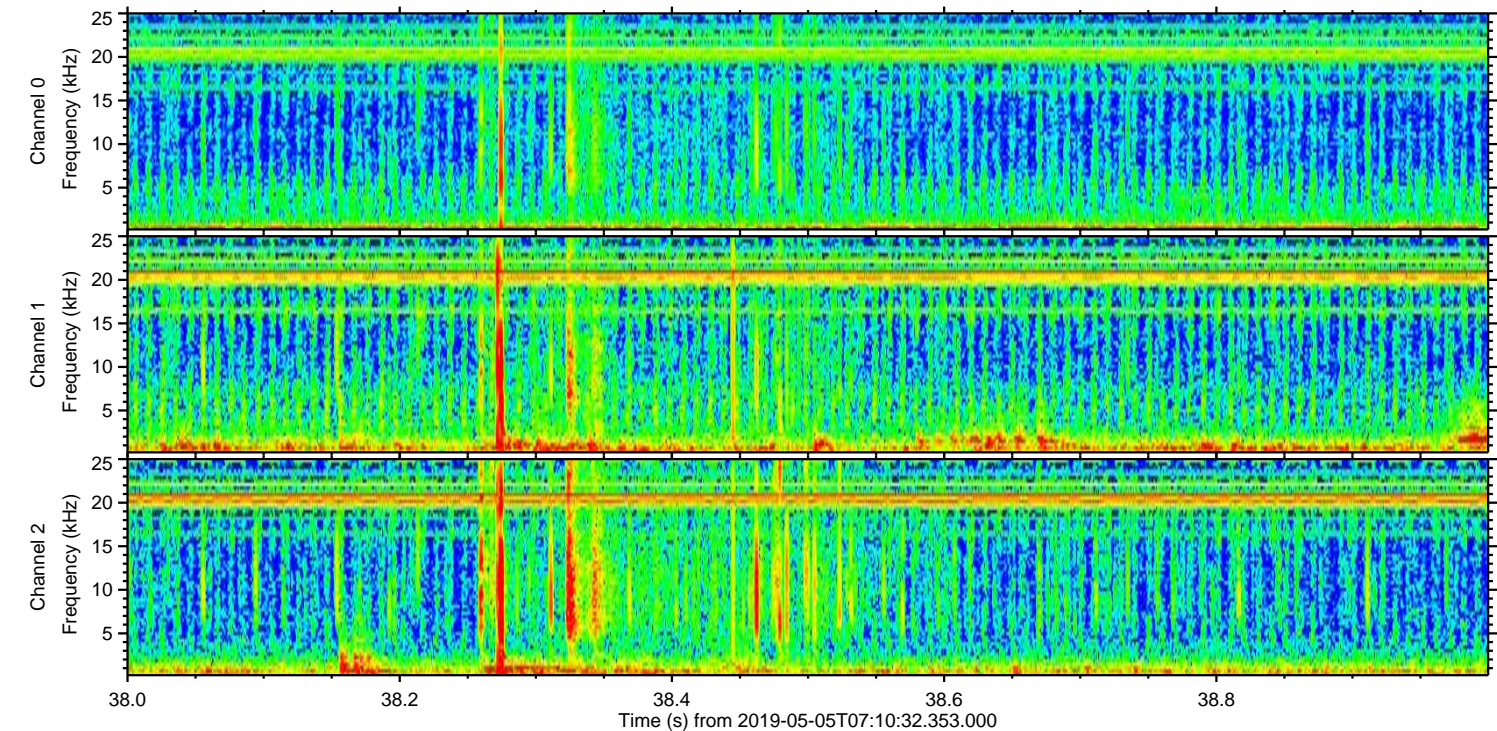
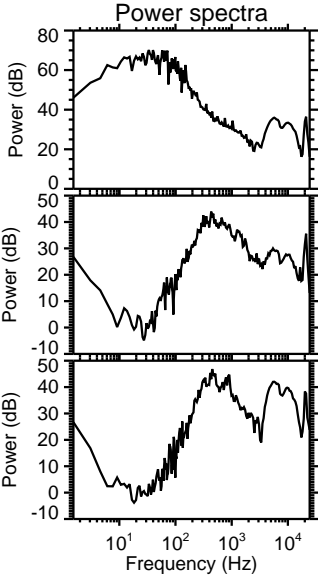
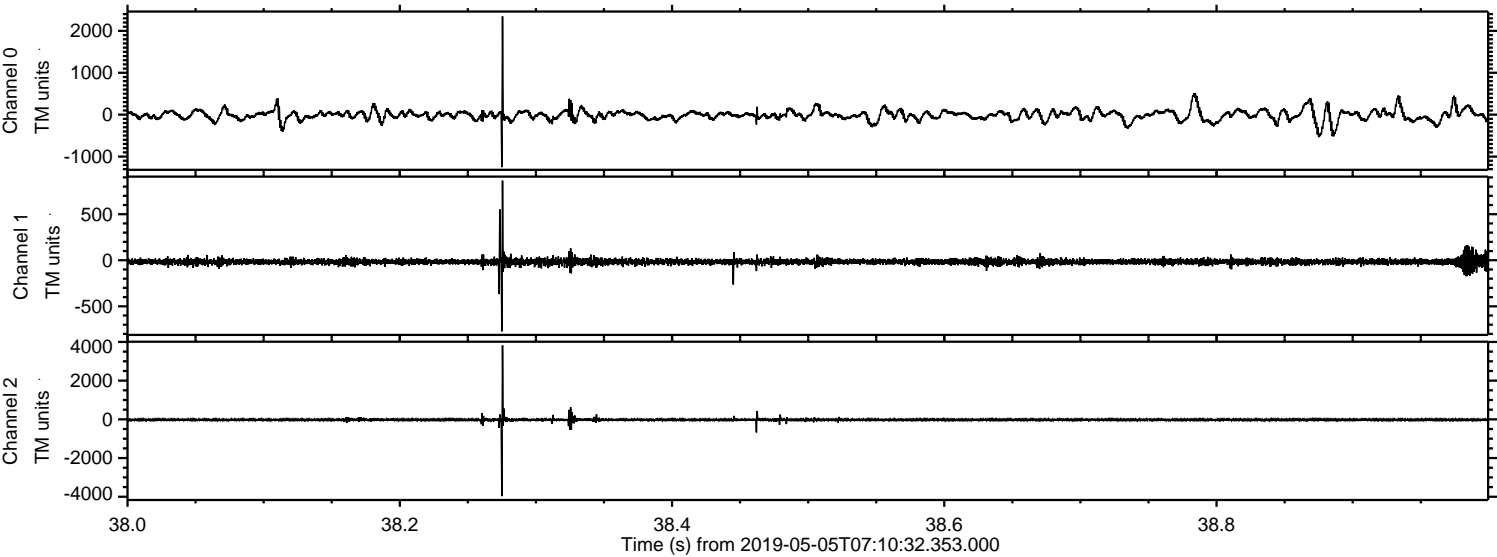
ELMAVAN 3D WAVEFORMS (Measured data sampled at 50 kHz) 50999 packets of 144 samples from 2019-05-05T07:10:32.353.000. Part 136/147

Processed Sun May 5 09:17:49 2019 by ELM ver.2012-10-06 from 001__elm20190505_071031__dat00.bin



ELMAVAN 3D WAVEFORMS (Measured data sampled at 50 kHz) 50999 packets of 144 samples from 2019-05-05T07:10:32.353.000. Part 39/147

Processed Sun May 5 09:17:49 2019 by ELM ver.2012-10-06 from 001__elm20190505_071031__dat00.bin



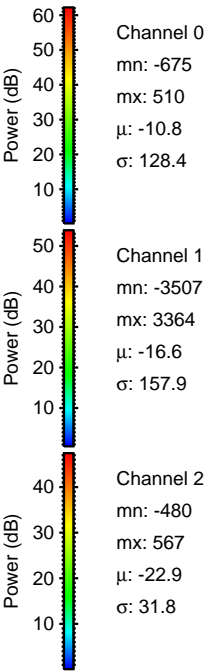
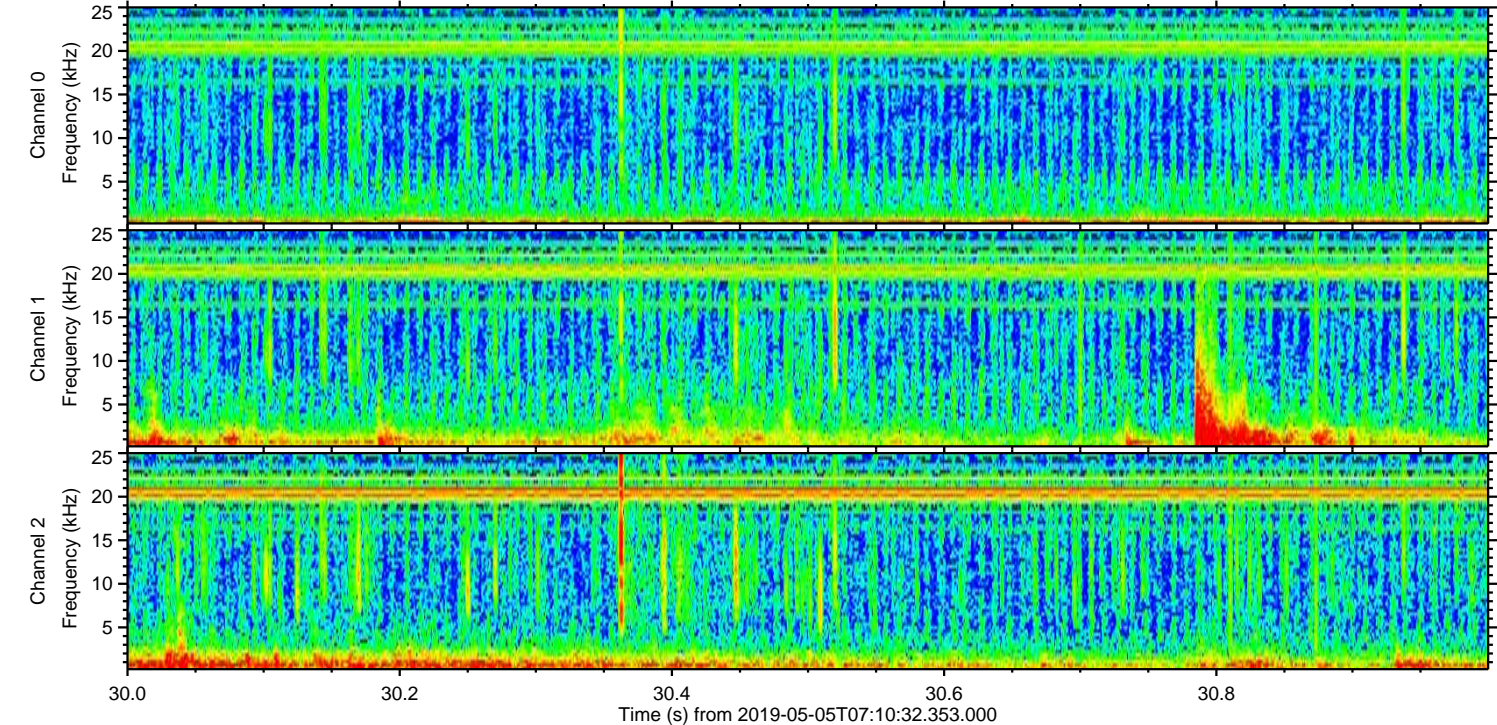
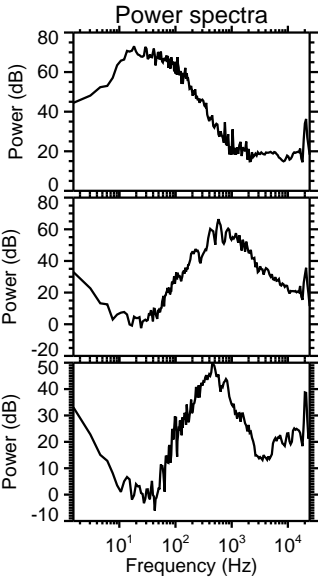
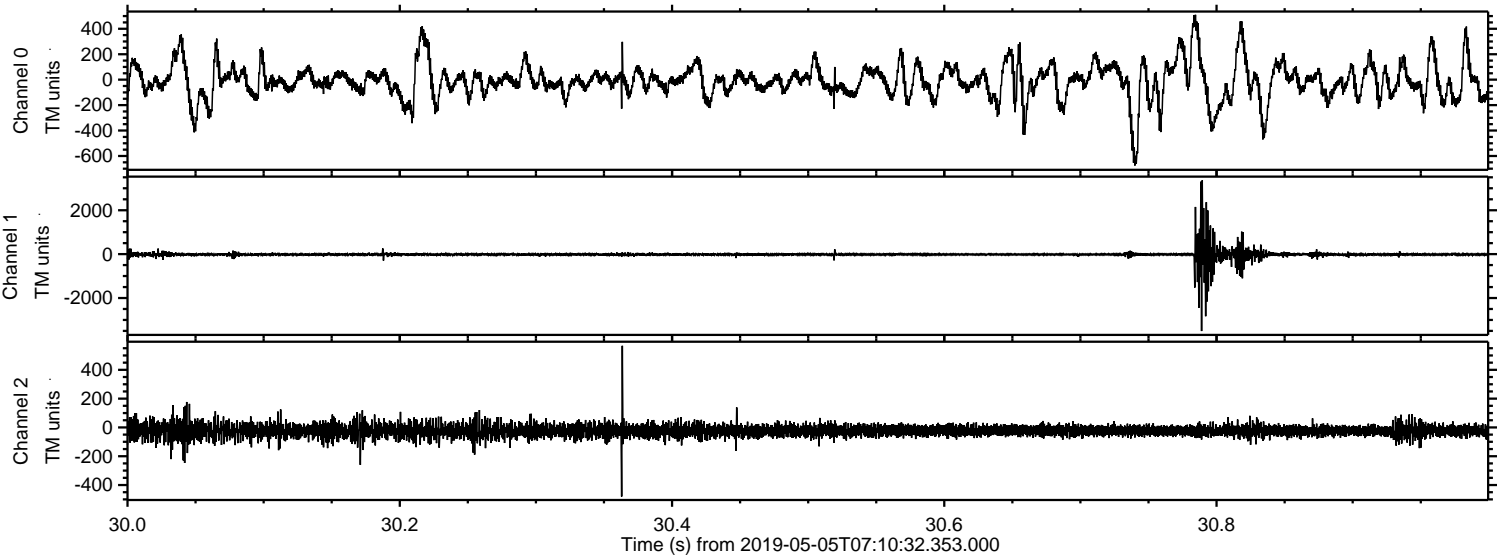
Channel 0
mn: -1254
mx: 2345
 μ : -10.7
 σ : 113.4

Channel 1
mn: -772
mx: 865
 μ : -16.6
 σ : 22.1

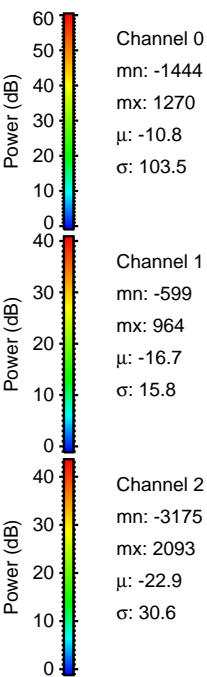
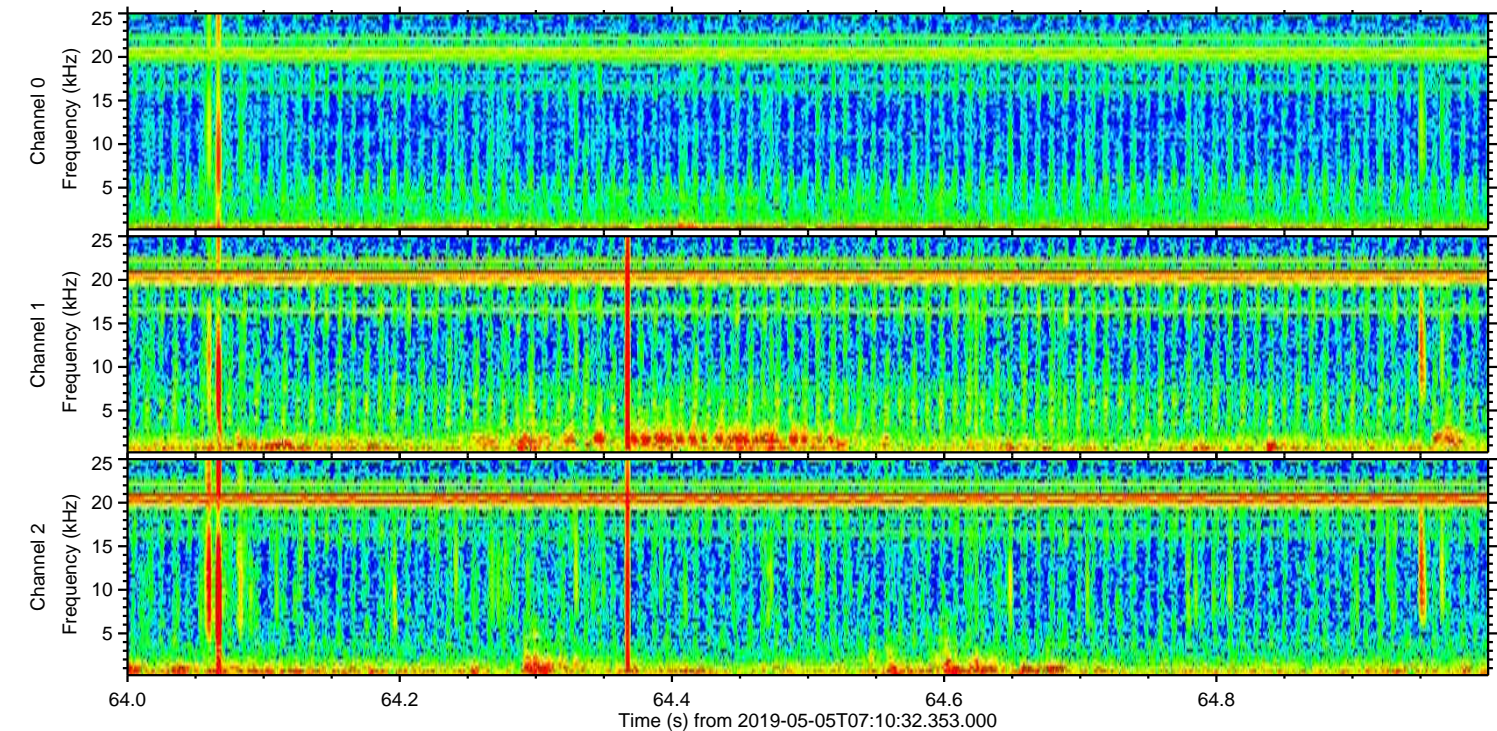
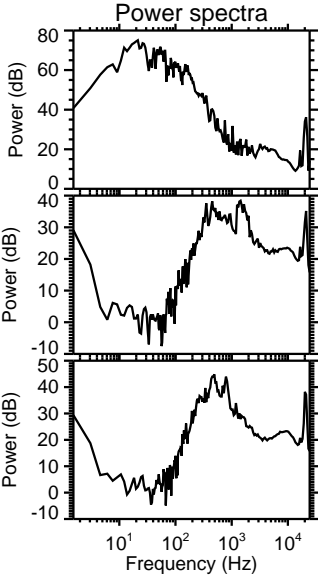
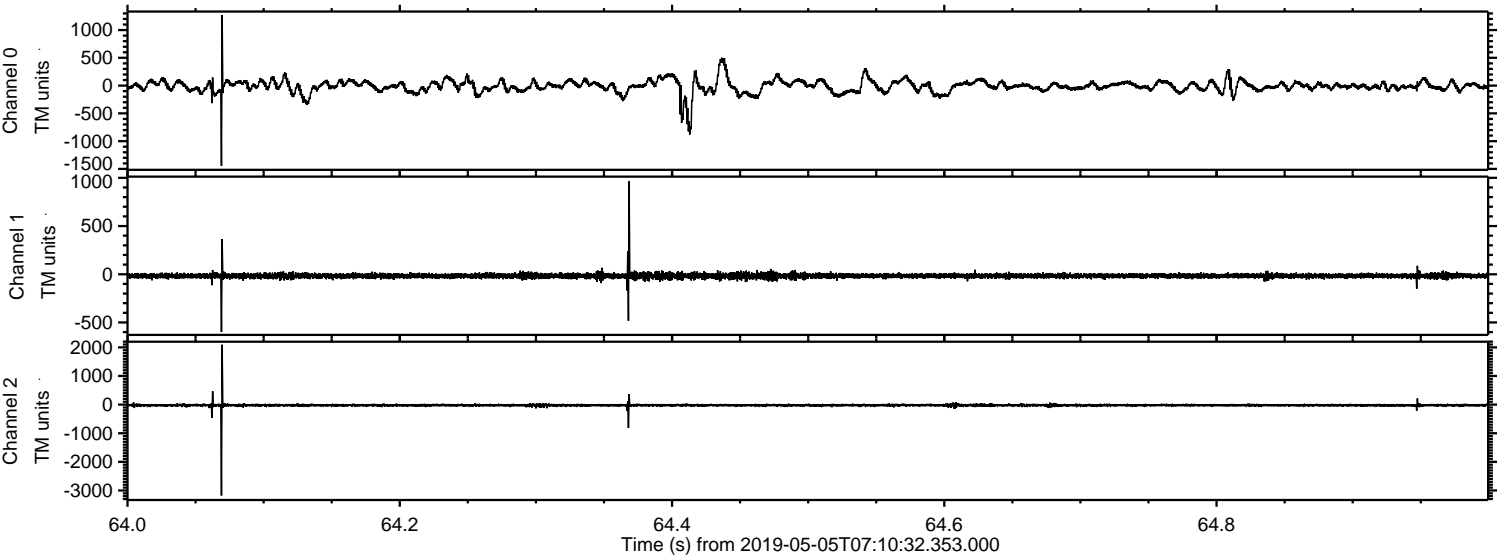
Channel 2
mn: -3971
mx: 3819
 μ : -22.8
 σ : 42.3

ELMAVAN 3D WAVEFORMS (Measured data sampled at 50 kHz) 50999 packets of 144 samples from 2019-05-05T07:10:32.353.000. Part 31/147

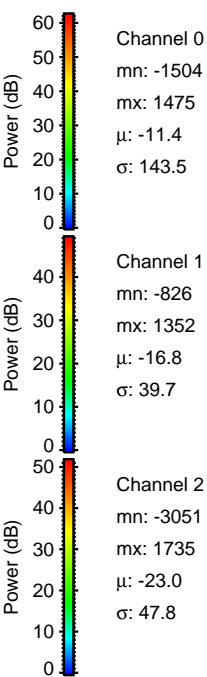
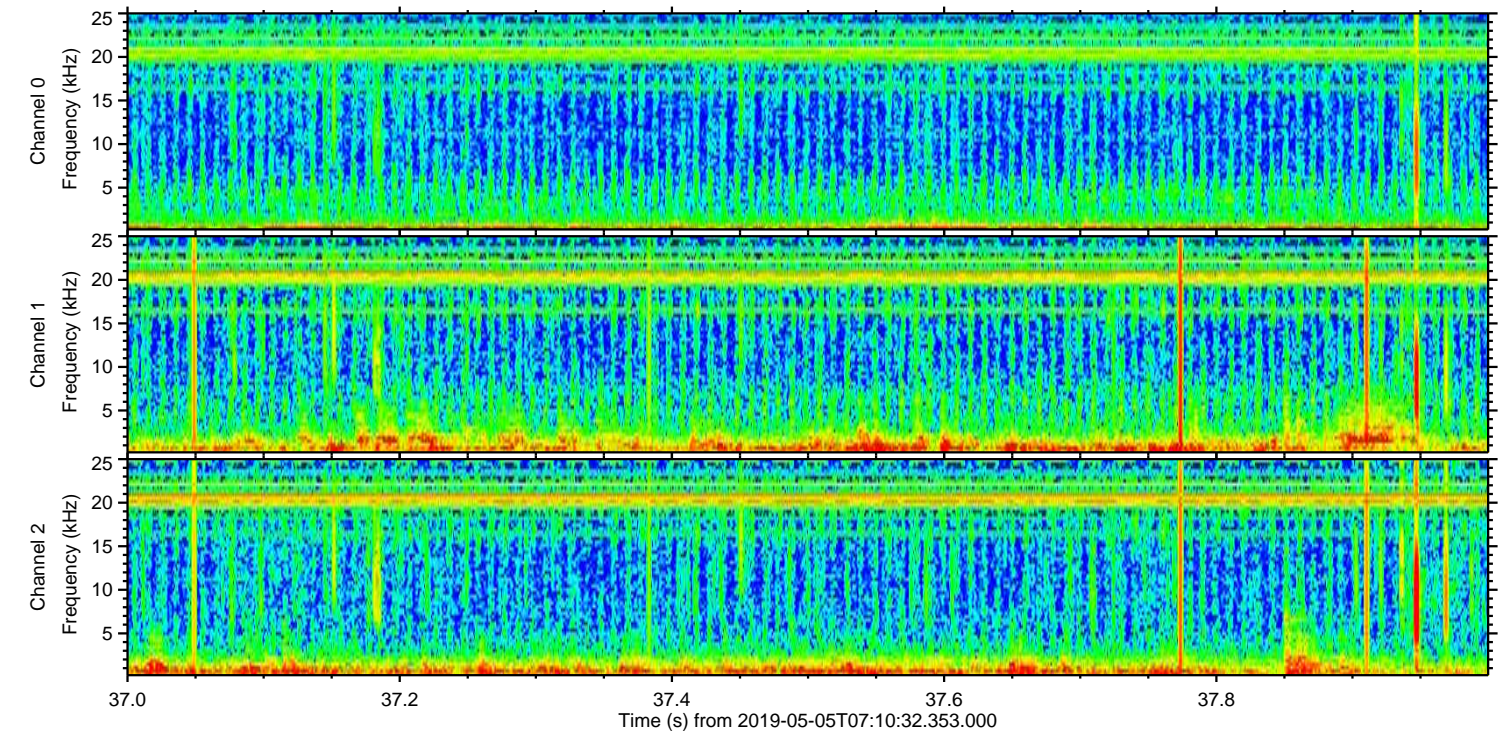
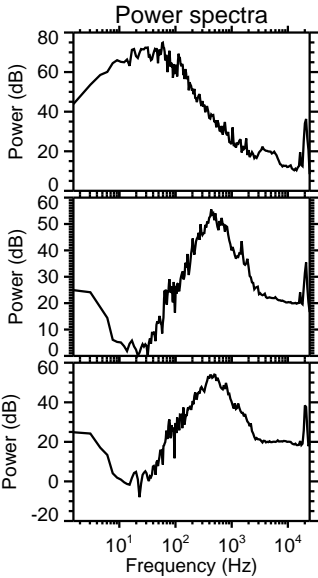
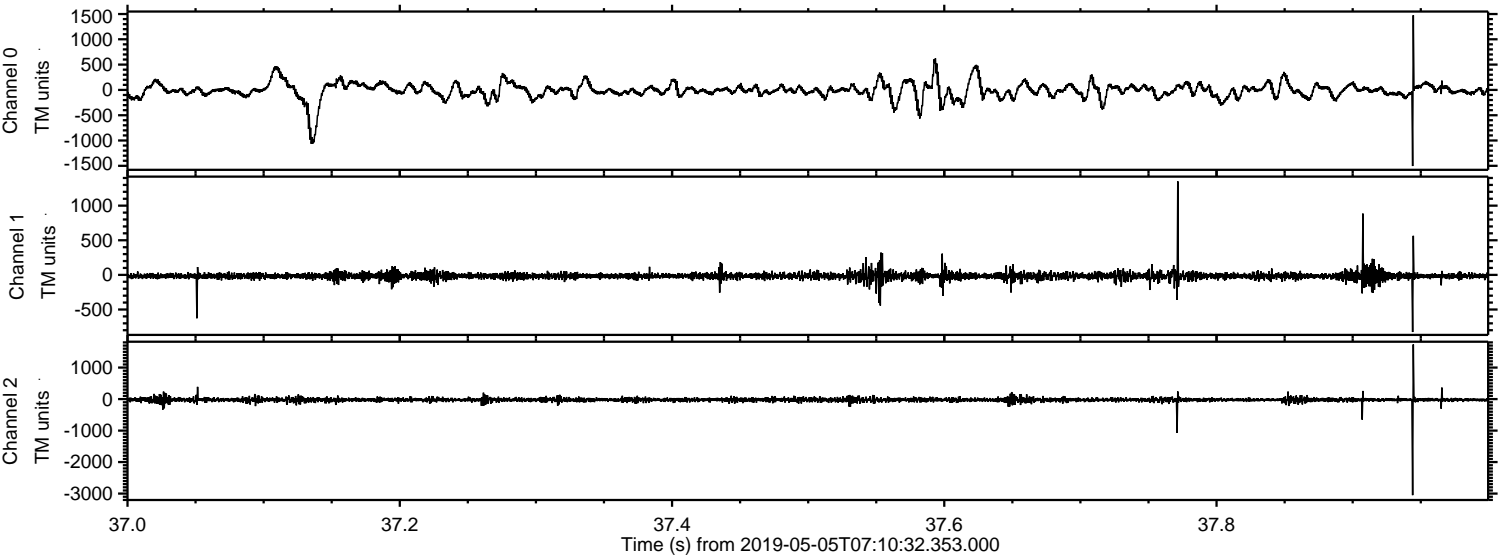
Processed Sun May 5 09:17:50 2019 by ELM ver.2012-10-06 from 001__elm20190505_071031__dat00.bin



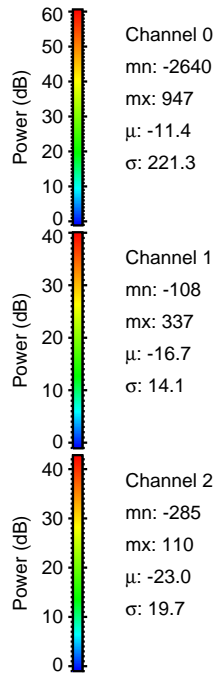
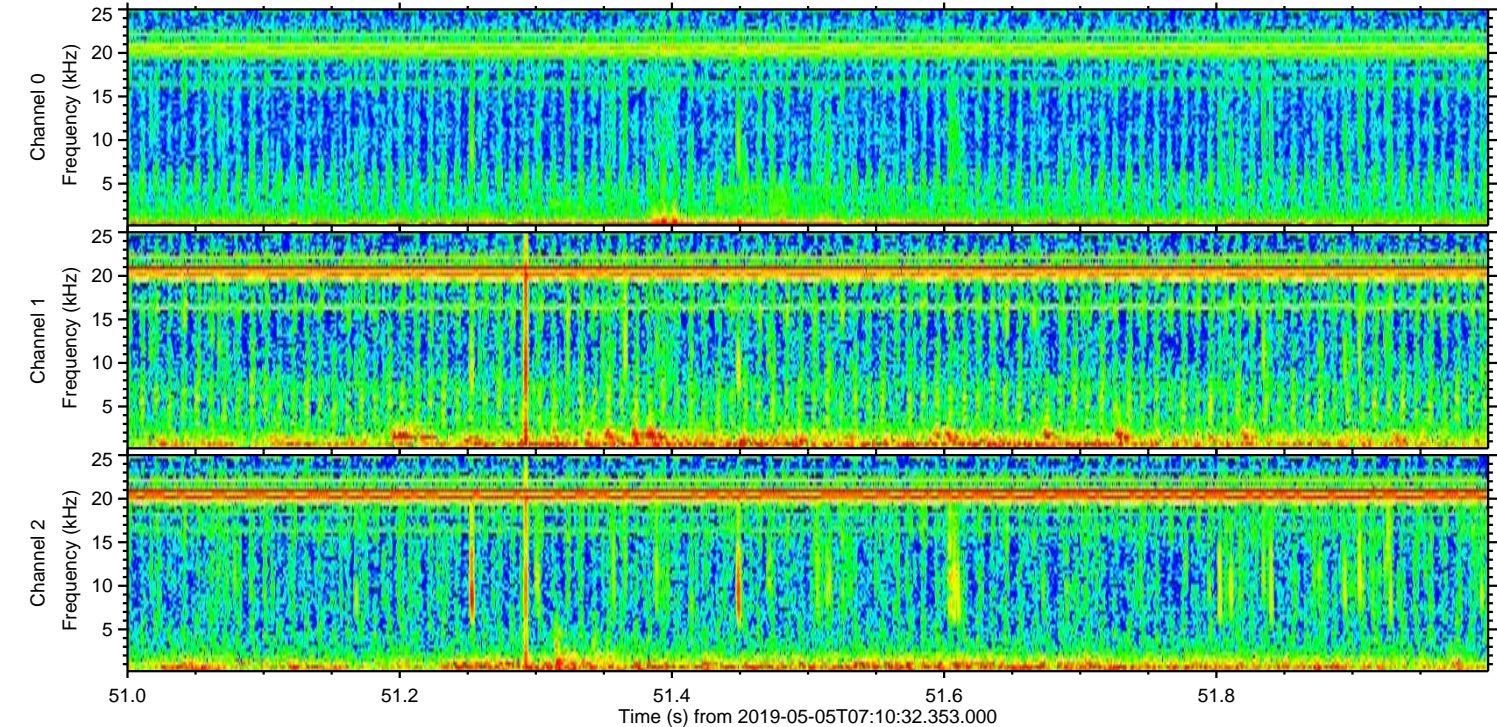
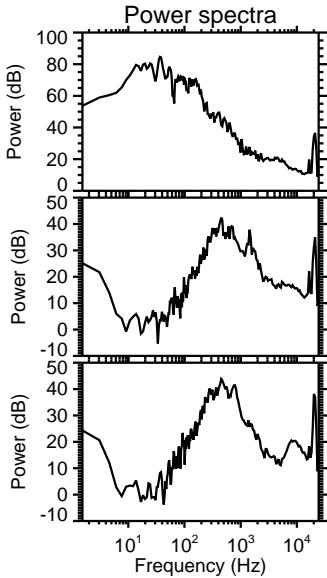
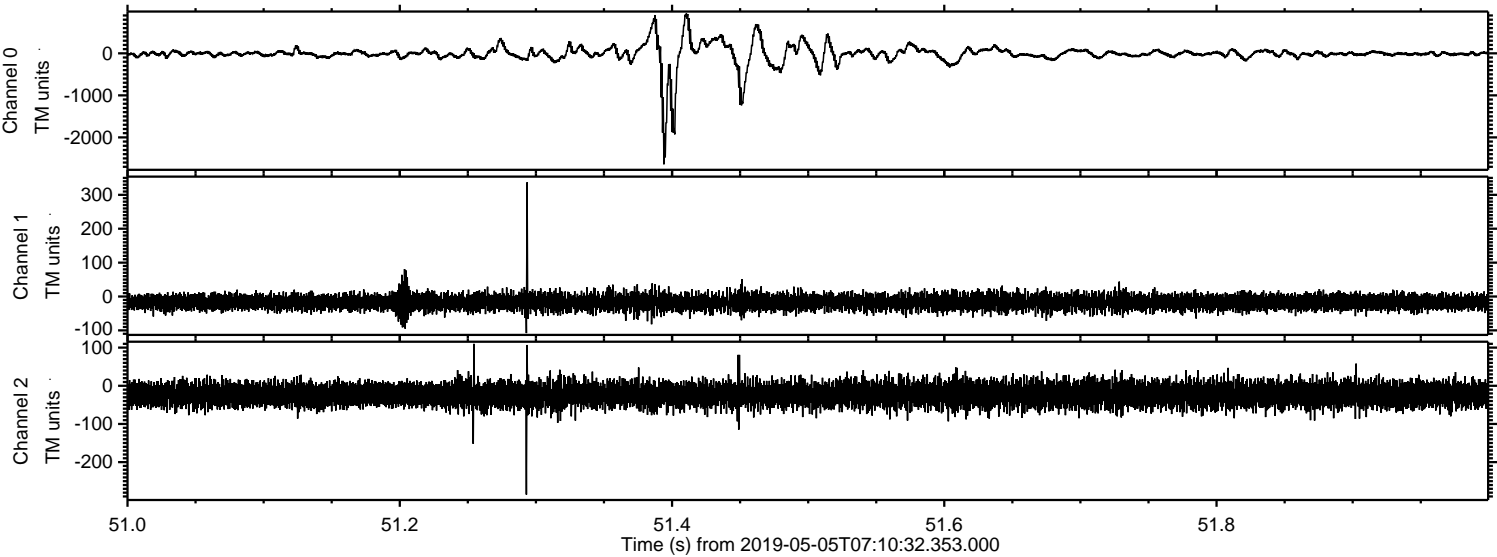
Processed Sun May 5 09:17:51 2019 by ELM ver.2012-10-06 from 001__elm20190505_071031__dat00.bin



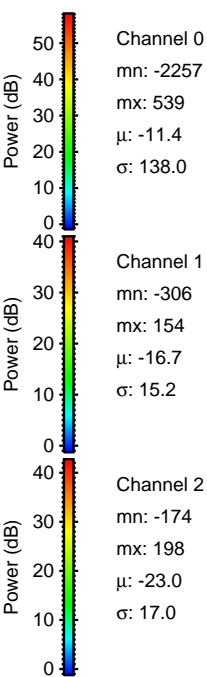
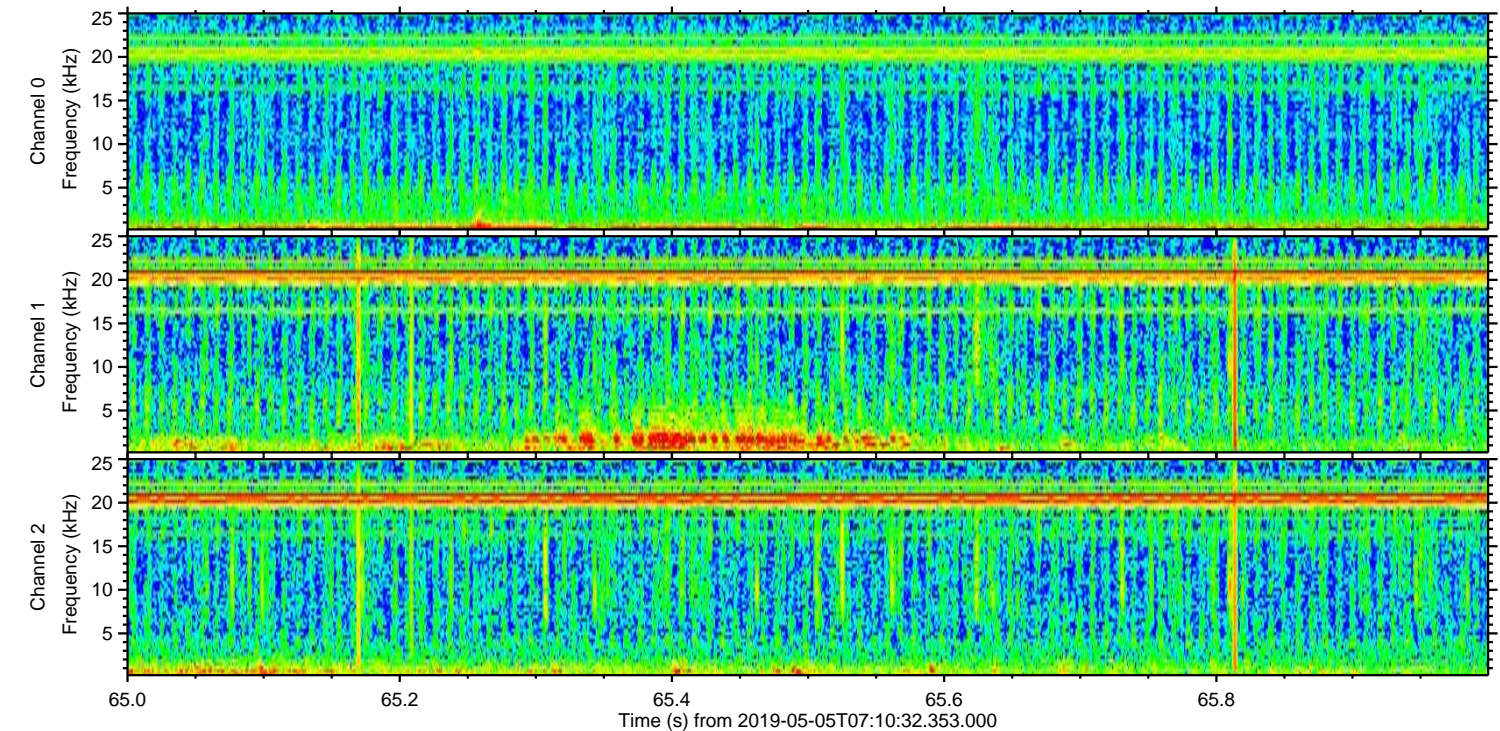
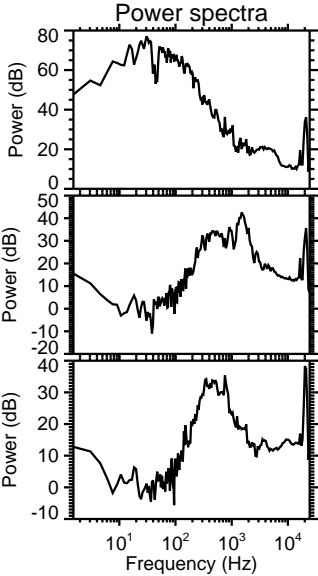
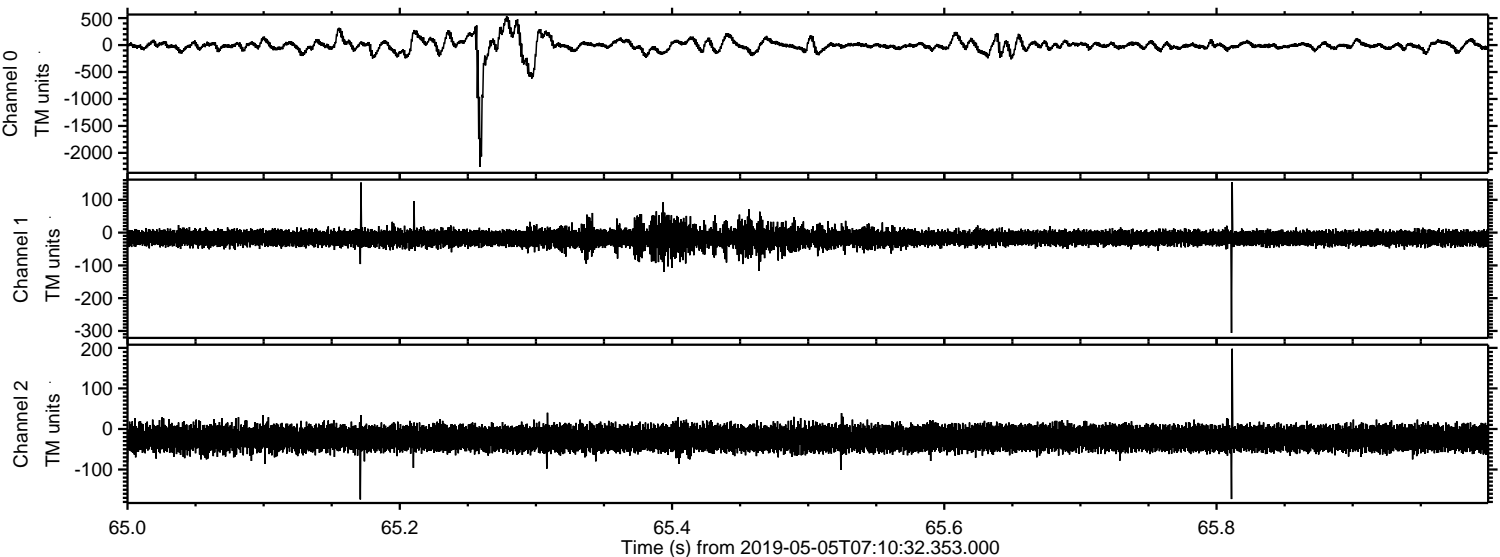
Processed Sun May 5 09:17:51 2019 by ELM ver.2012-10-06 from 001__elm20190505_071031__dat00.bin



Processed Sun May 5 09:17:52 2019 by ELM ver.2012-10-06 from 001__elm20190505_071031__dat00.bin



Processed Sun May 5 09:17:53 2019 by ELM ver.2012-10-06 from 001__elm20190505_071031__dat00.bin



Processed Sun May 5 09:17:53 2019 by ELM ver.2012-10-06 from 001__elm20190505_071031__dat00.bin

