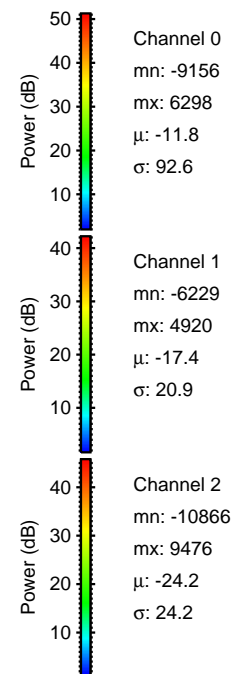
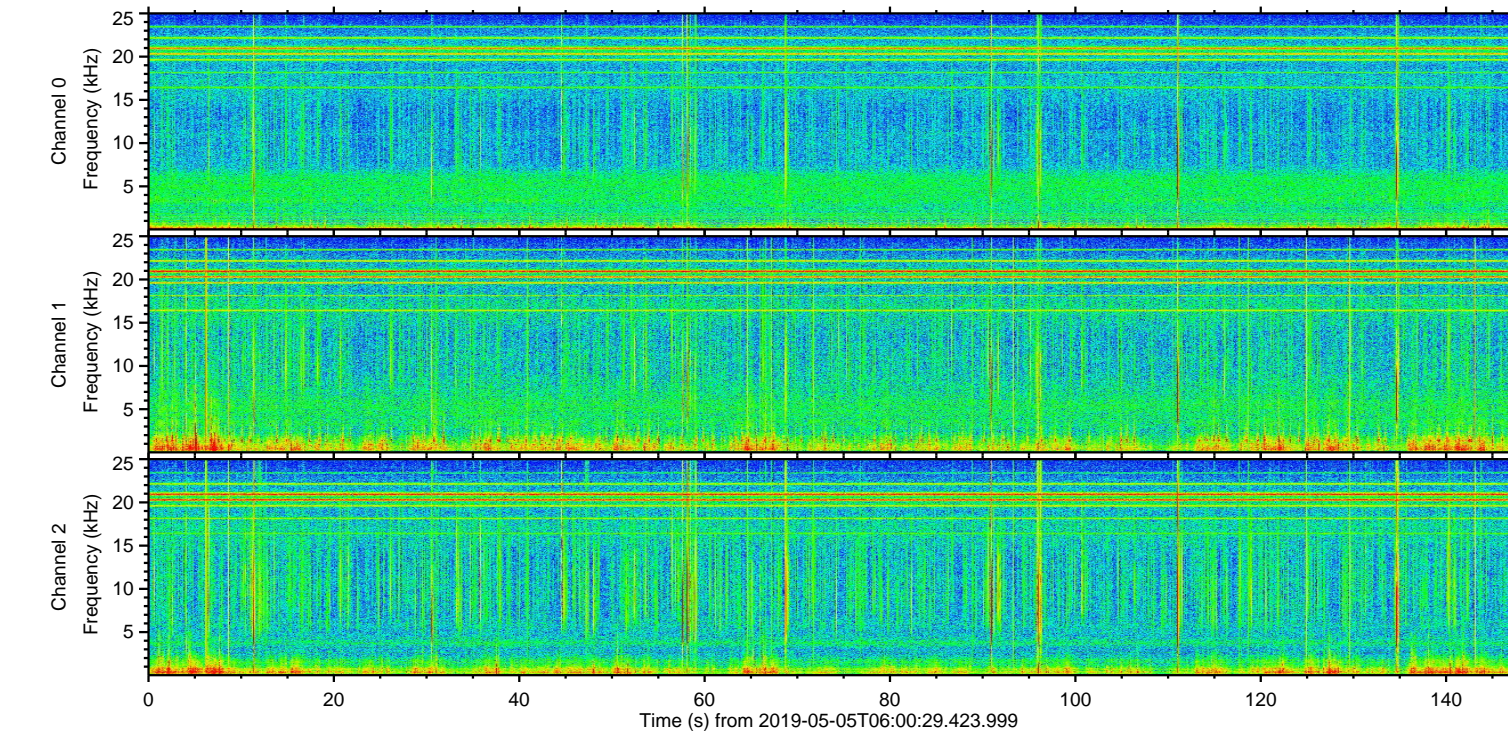
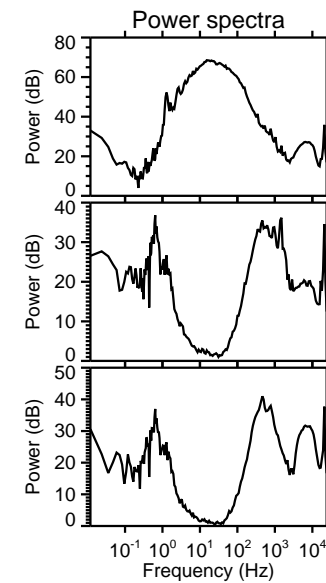
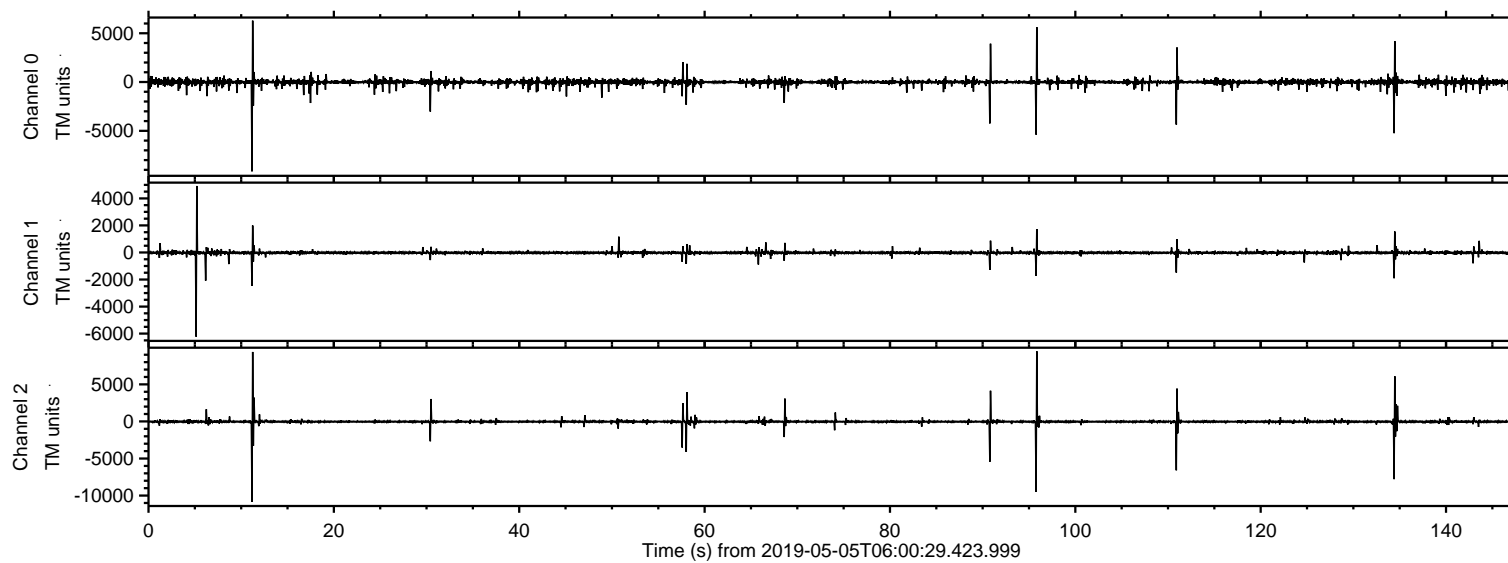
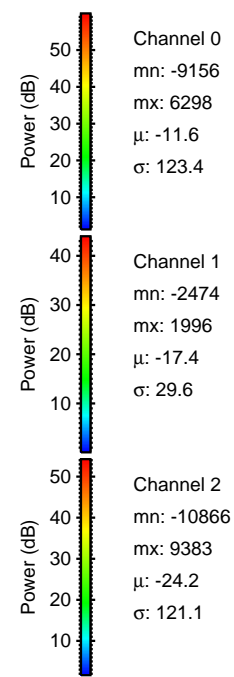
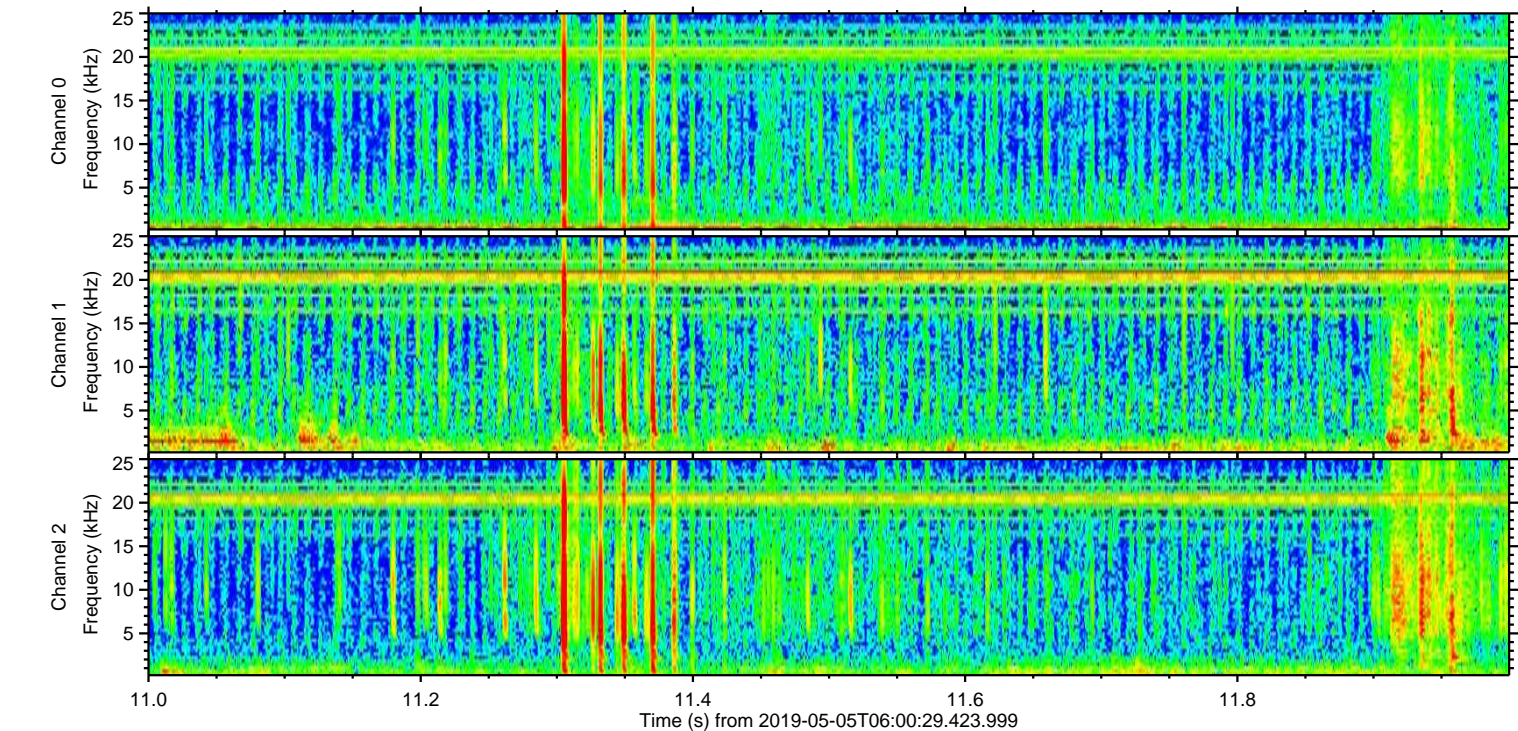
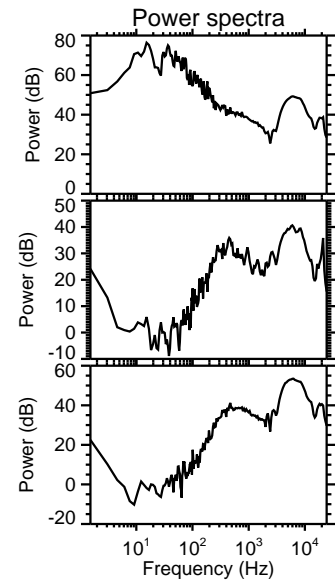
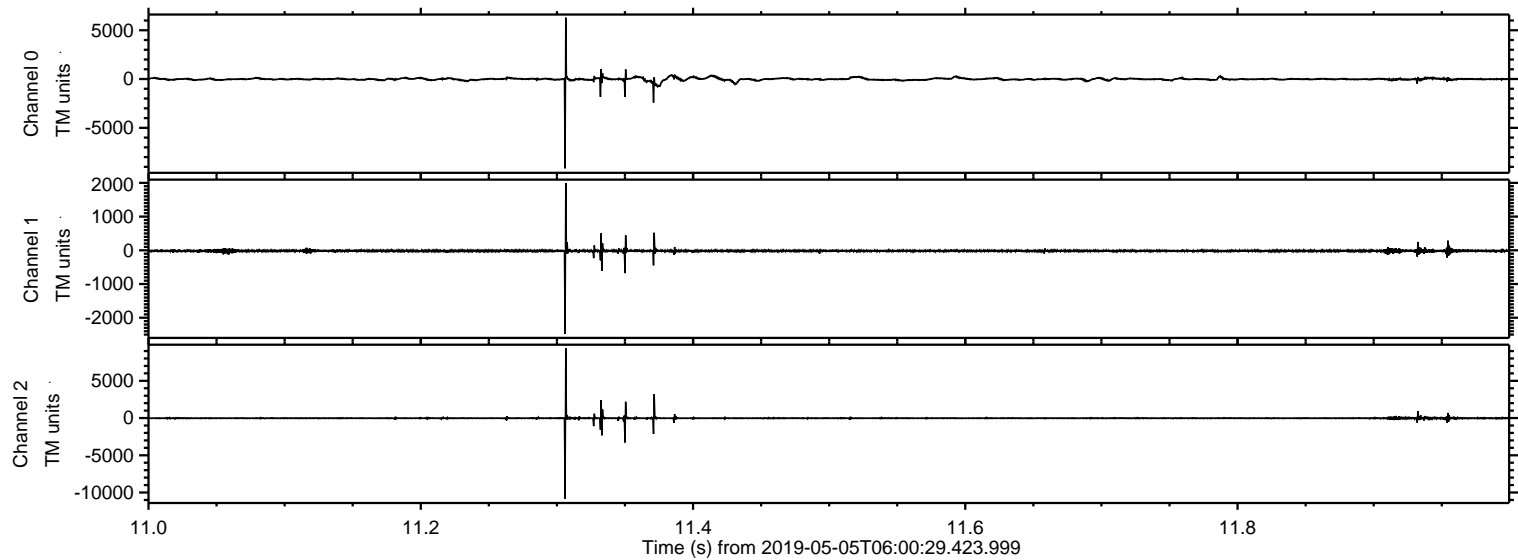


ELMAVAN 3D WAVEFORMS (Measured data sampled at 50 kHz) 51000 packets of 144 samples from 2019-05-05T06:00:29.423.999.

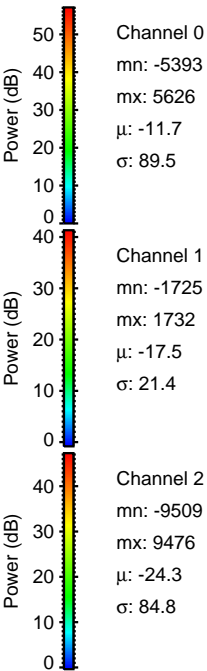
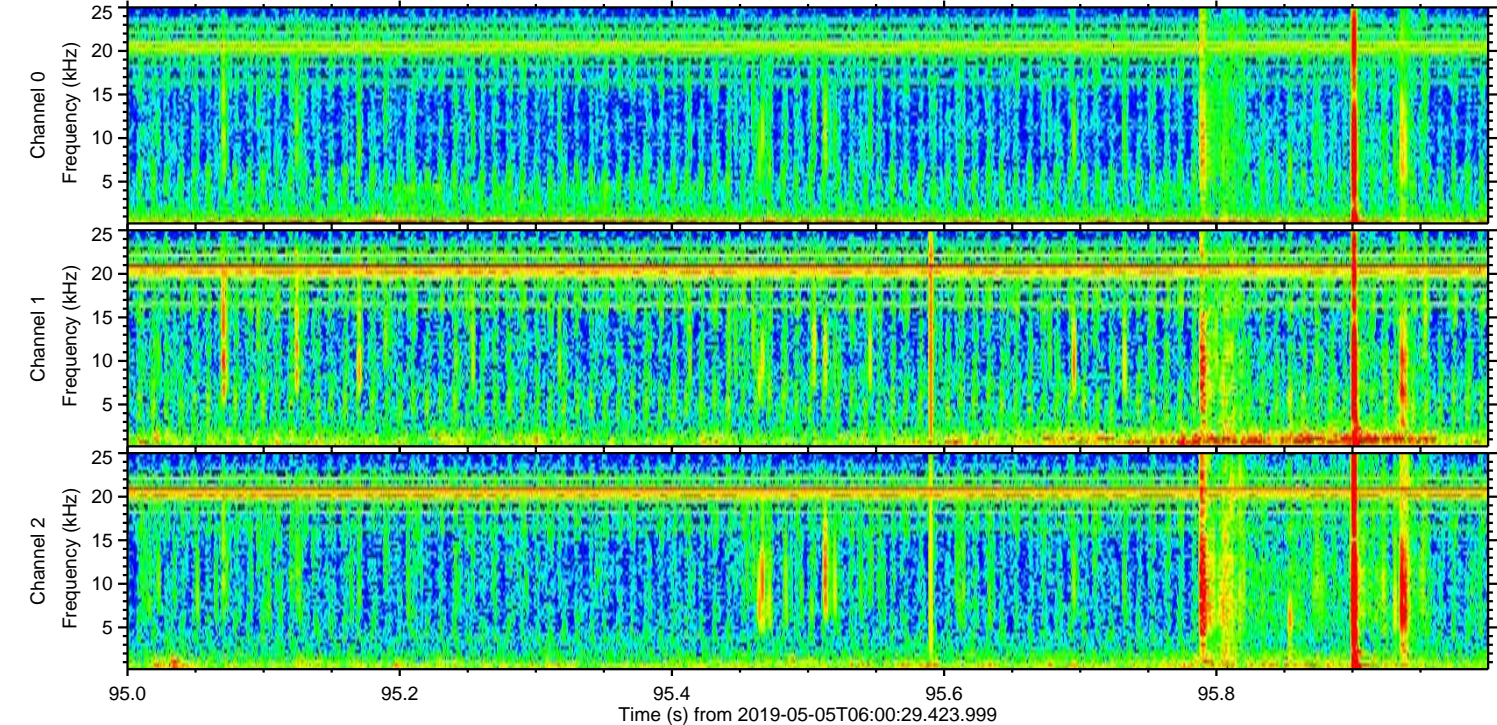
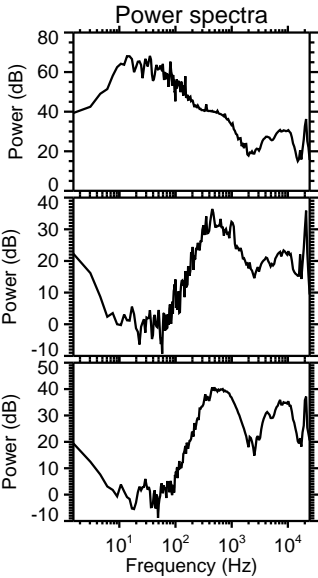
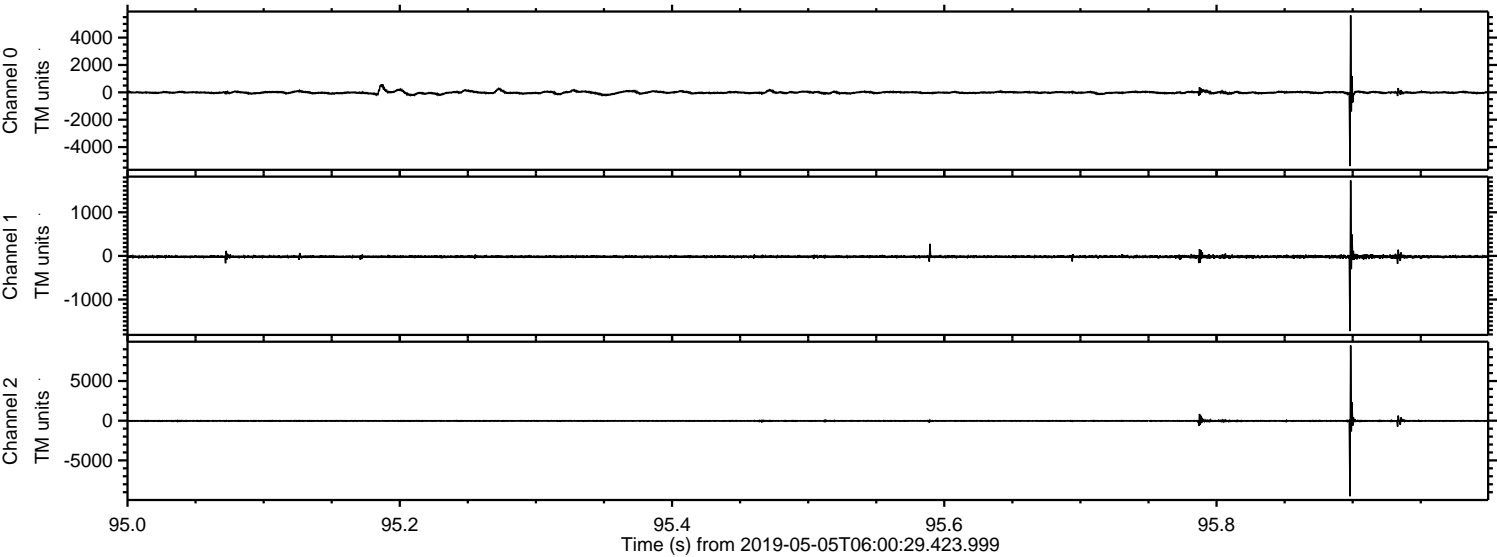
Processed Sun May 5 08:07:27 2019 by ELM ver.2012-10-06 from 001__elm20190505_060028__dat00.bin



Processed Sun May 5 08:07:37 2019 by ELM ver.2012-10-06 from 001__elm20190505_060028__dat00.bin

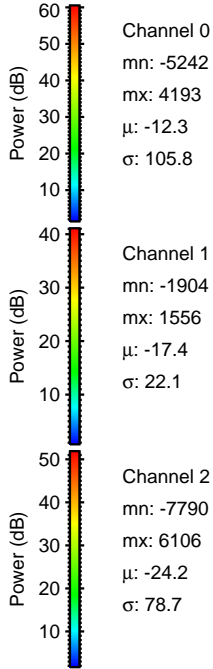
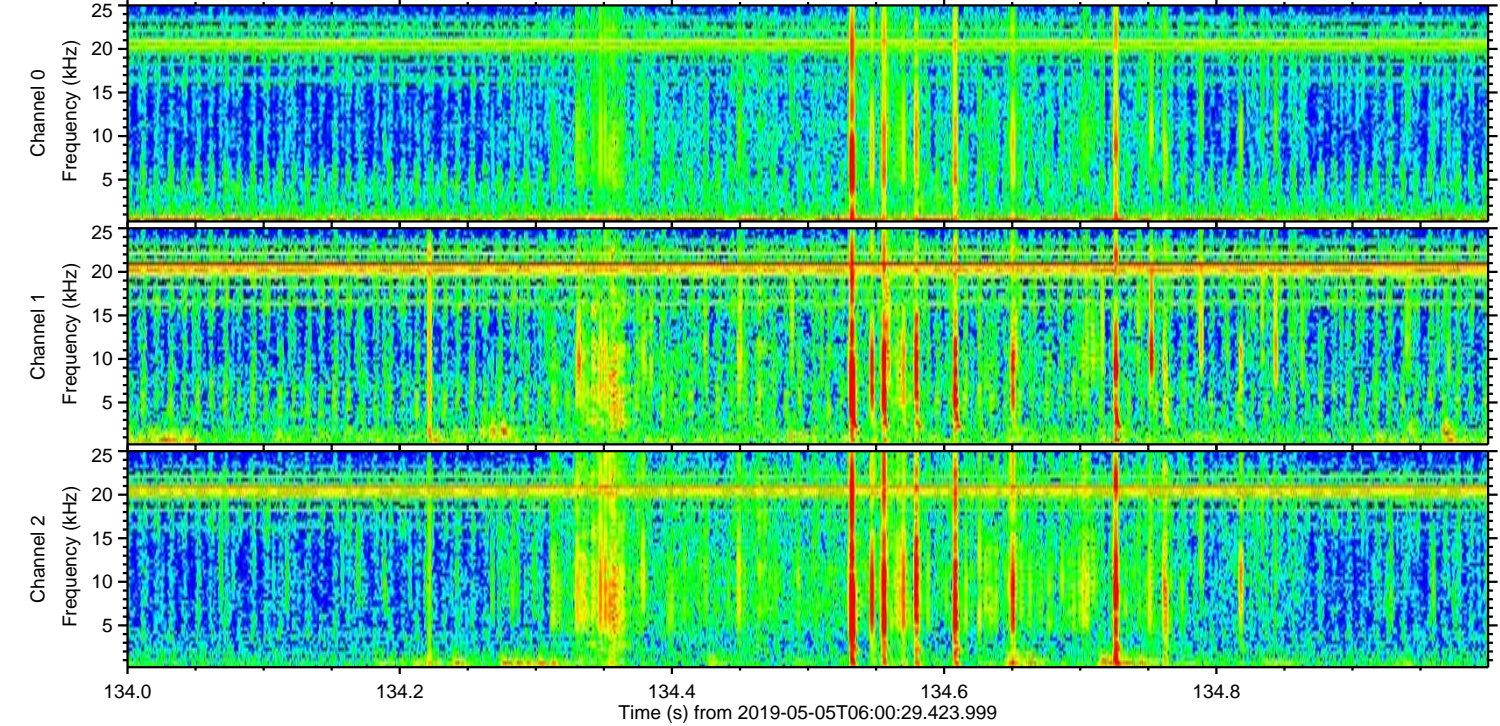
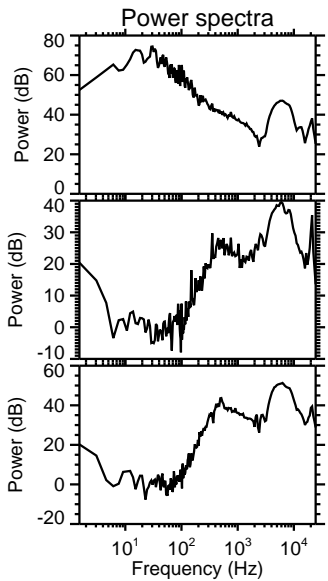
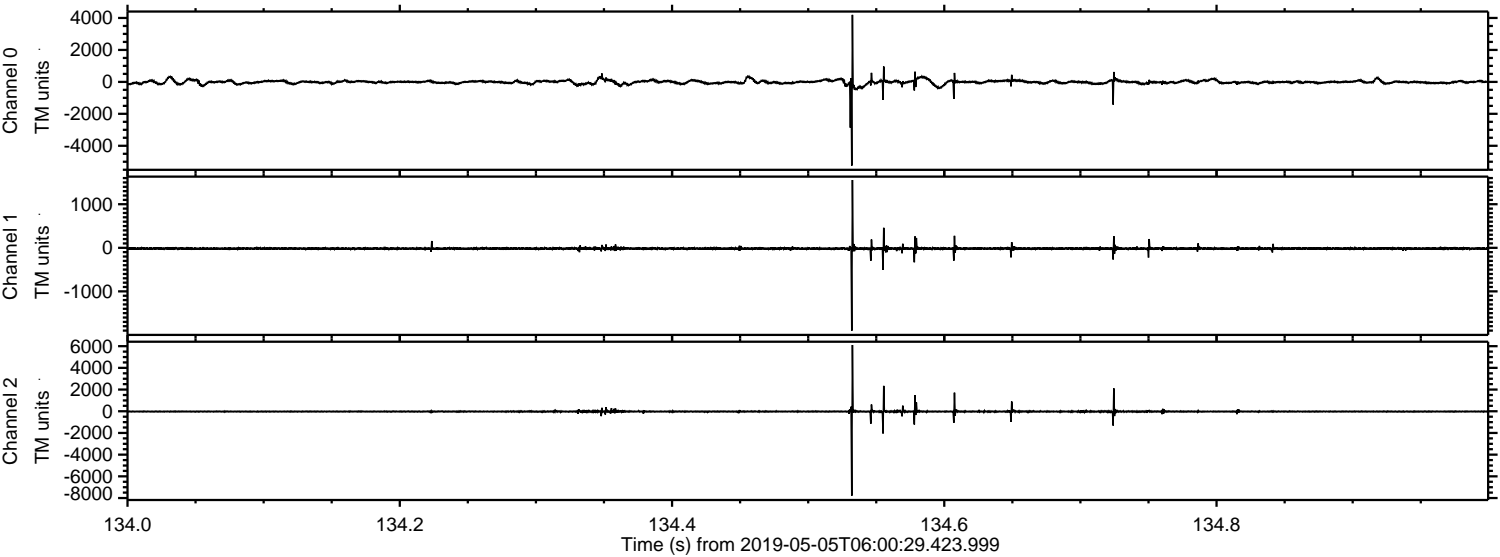


Processed Sun May 5 08:07:38 2019 by ELM ver.2012-10-06 from 001__elm20190505_060028__dat00.bin



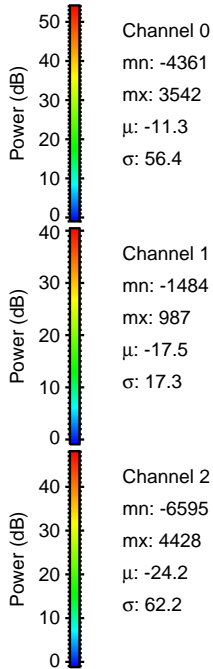
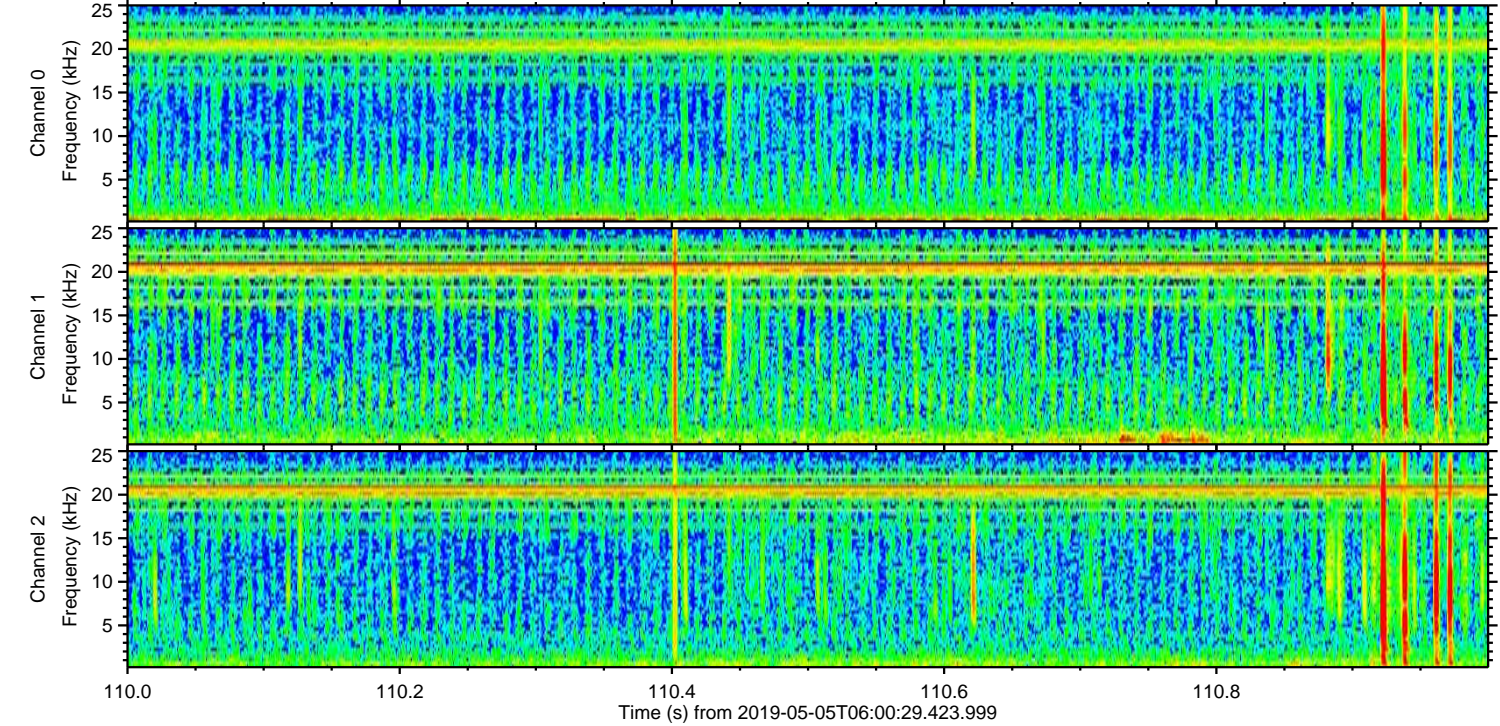
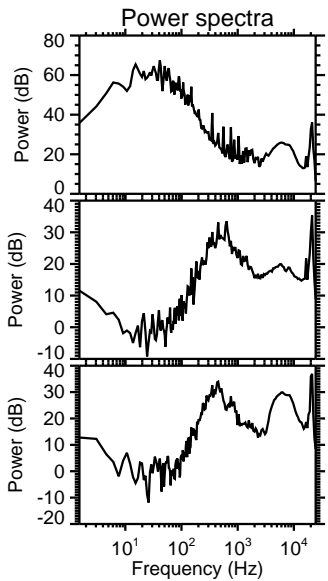
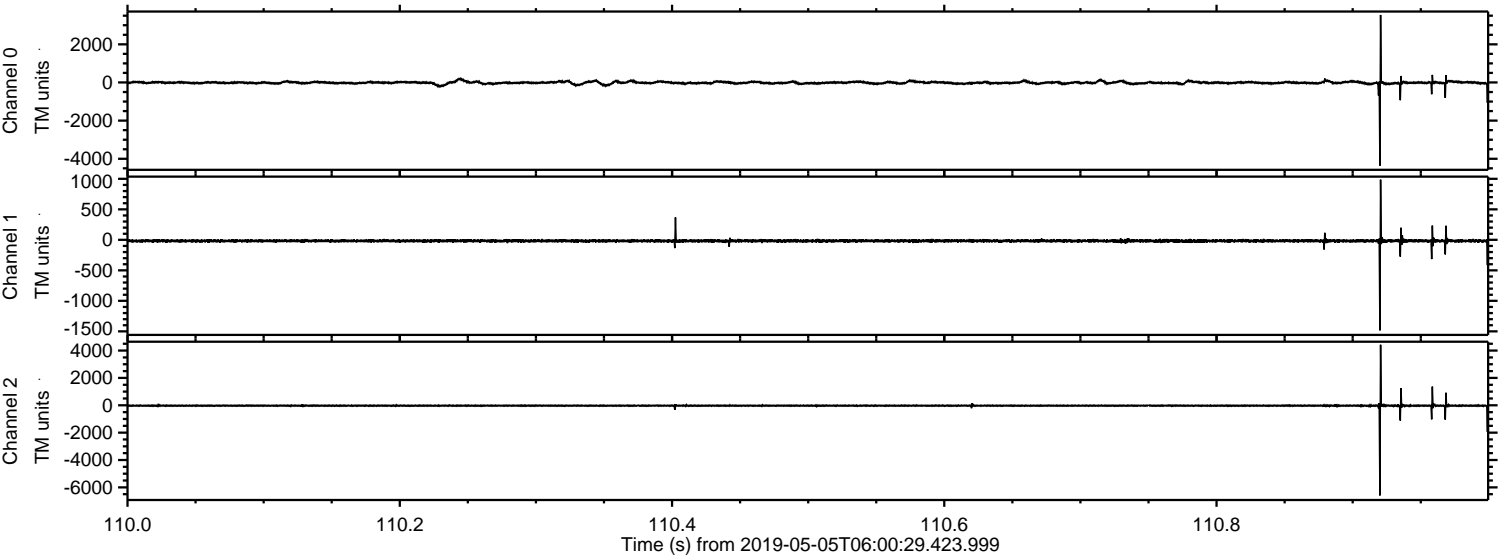
ELMAVAN 3D WAVEFORMS (Measured data sampled at 50 kHz) 51000 packets of 144 samples from 2019-05-05T06:00:29.423.999. Part 135/147

Processed Sun May 5 08:07:38 2019 by ELM ver.2012-10-06 from 001__elm20190505_060028__dat00.bin



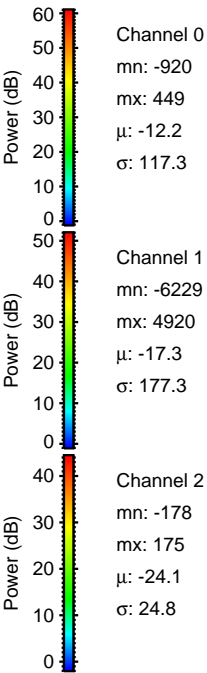
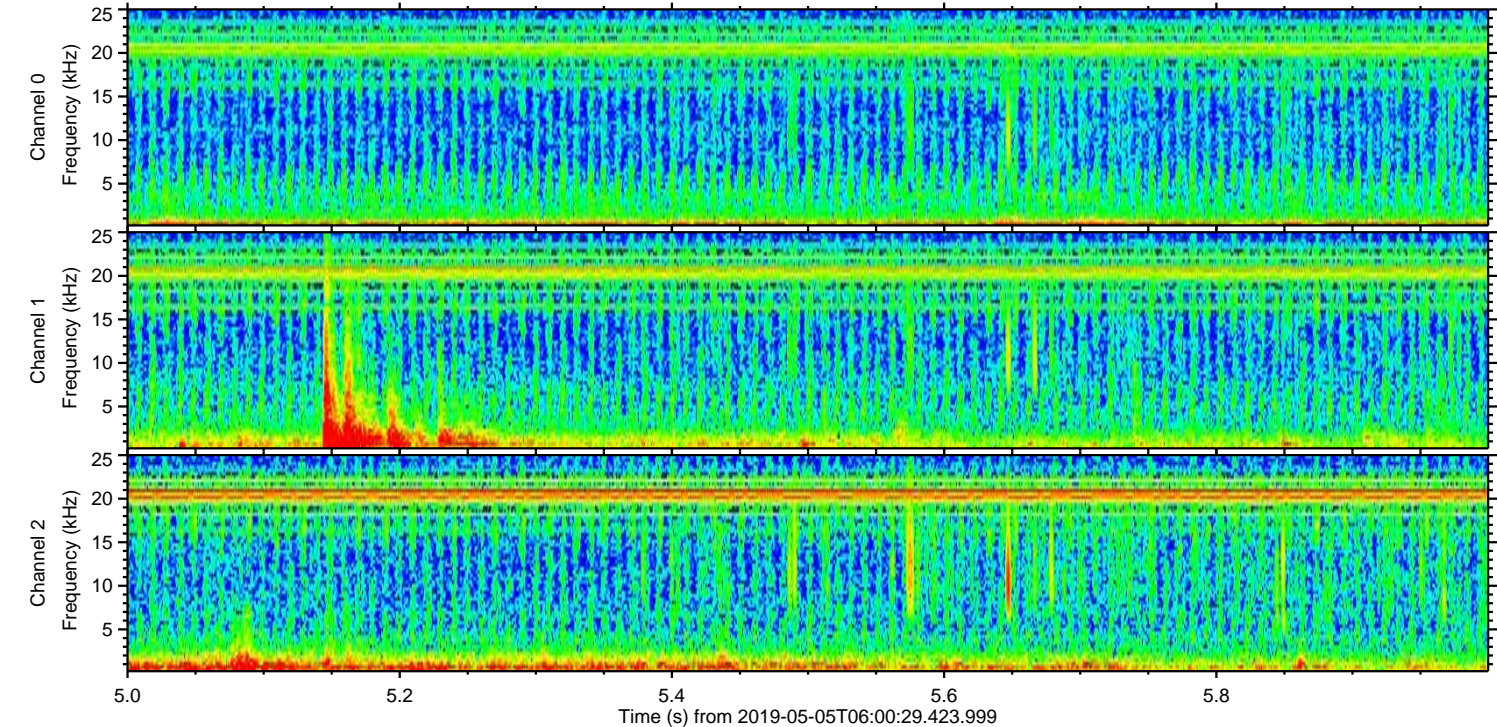
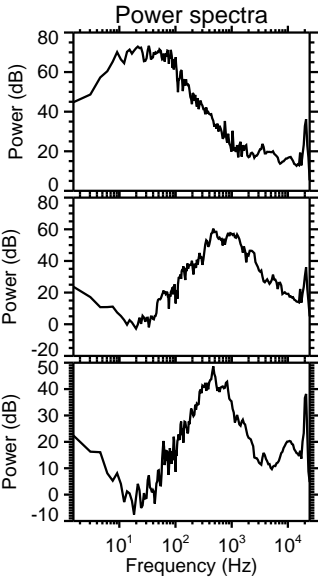
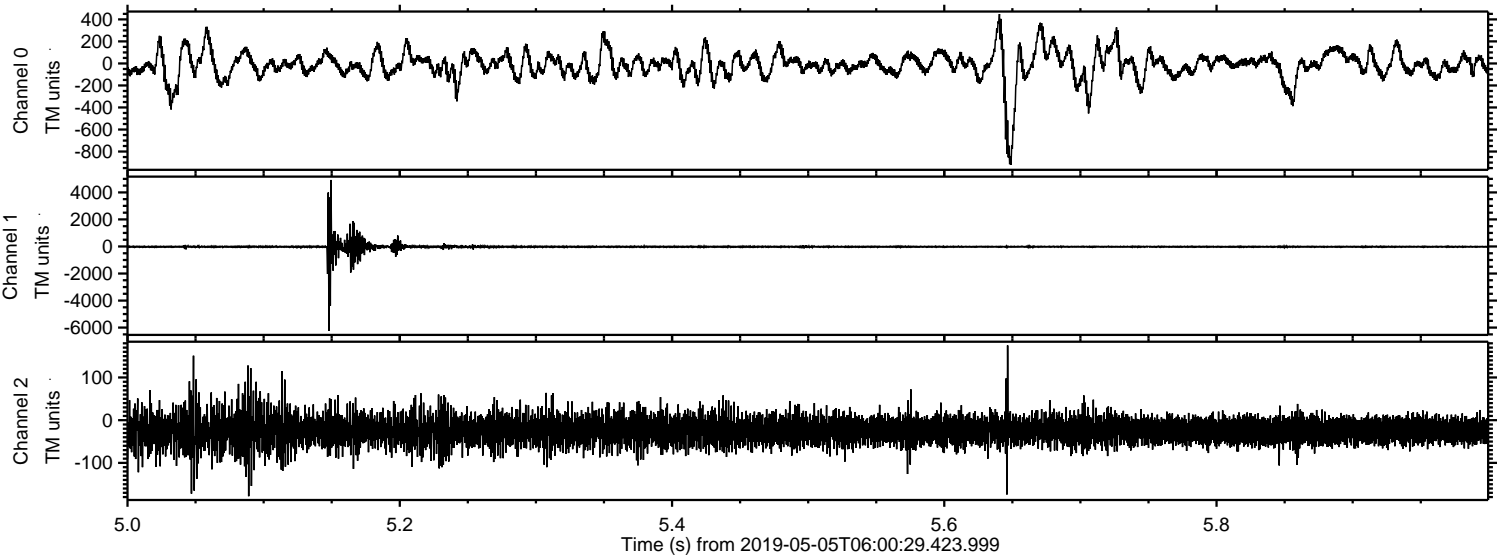
ELMAVAN 3D WAVEFORMS (Measured data sampled at 50 kHz) 51000 packets of 144 samples from 2019-05-05T06:00:29.423.999. Part 111/147

Processed Sun May 5 08:07:39 2019 by ELM ver.2012-10-06 from 001__elm20190505_060028__dat00.bin



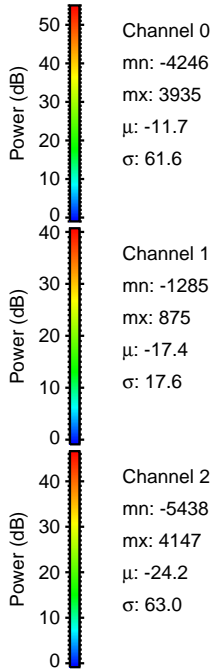
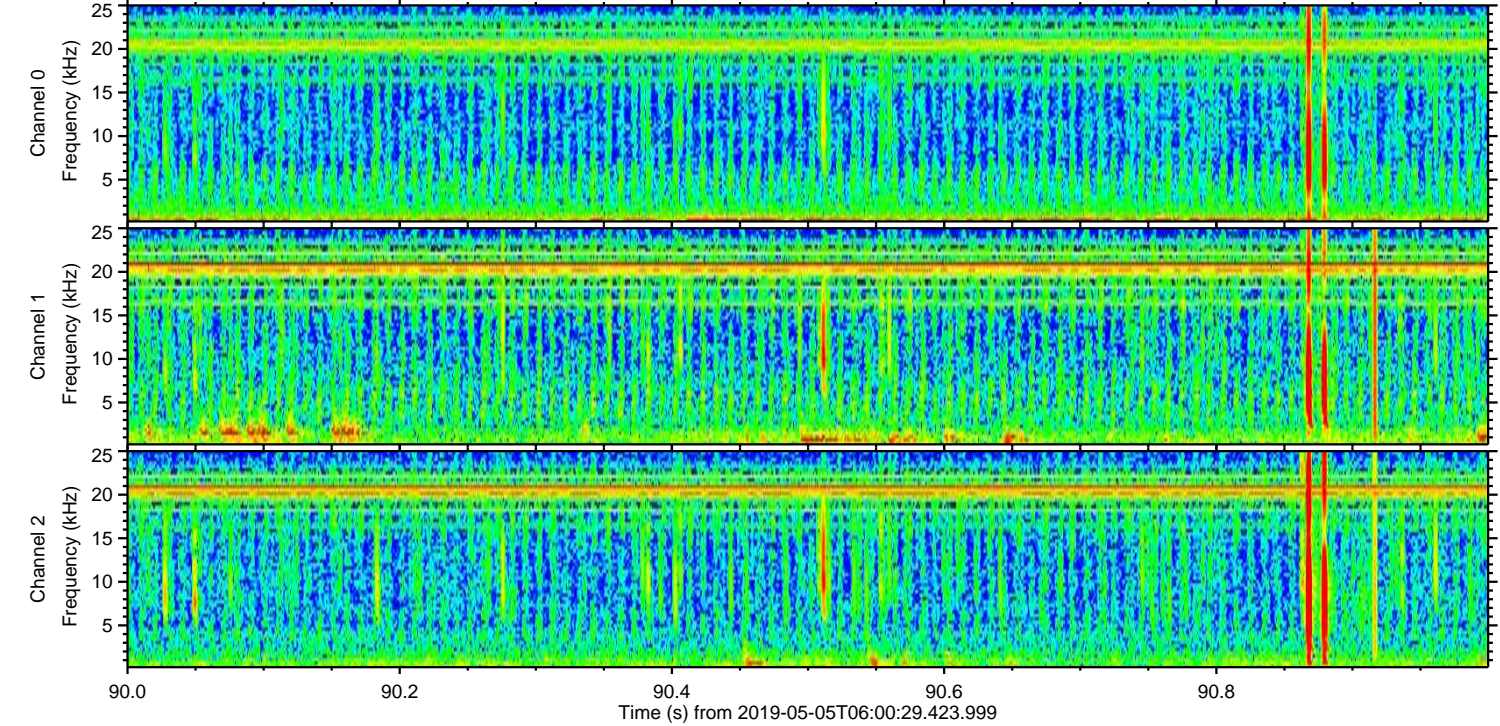
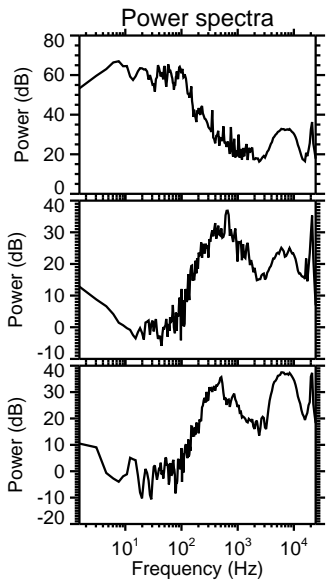
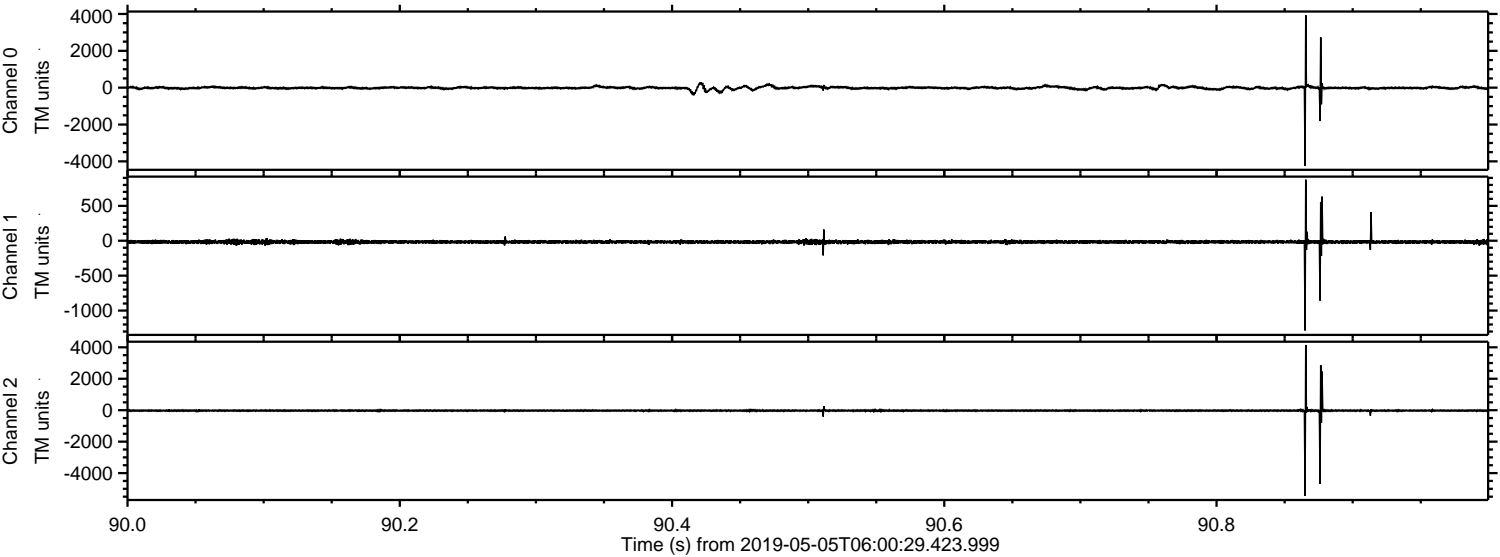
ELMAVAN 3D WAVEFORMS (Measured data sampled at 50 kHz) 51000 packets of 144 samples from 2019-05-05T06:00:29.423.999. Part 6/147

Processed Sun May 5 08:07:40 2019 by ELM ver.2012-10-06 from 001__elm20190505_060028__dat00.bin

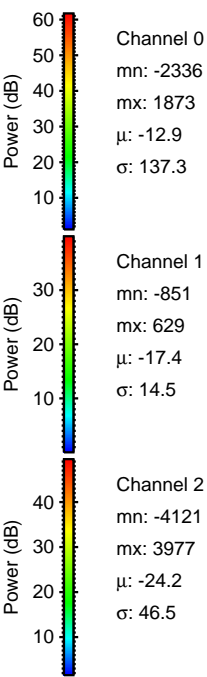
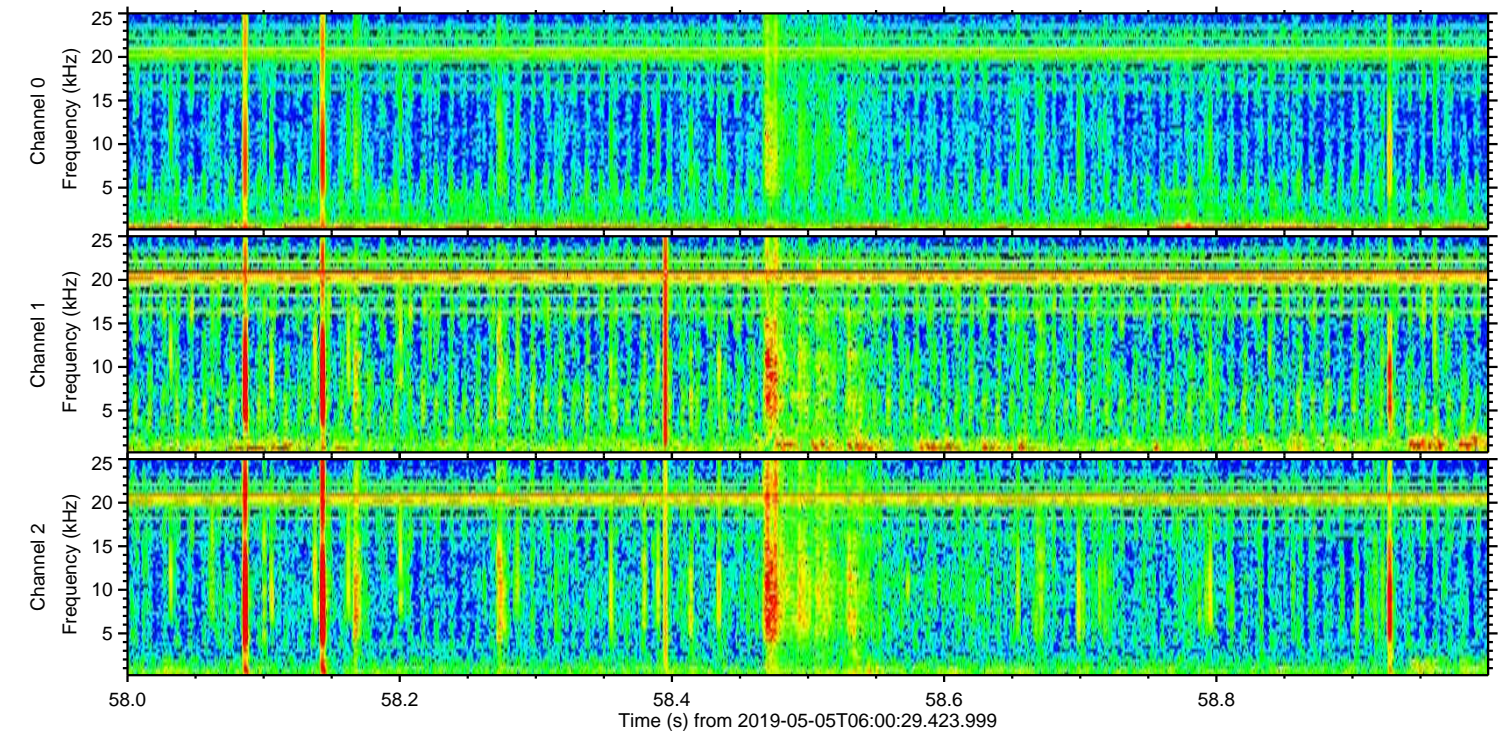
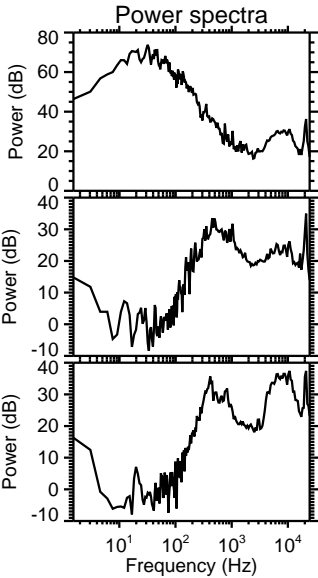
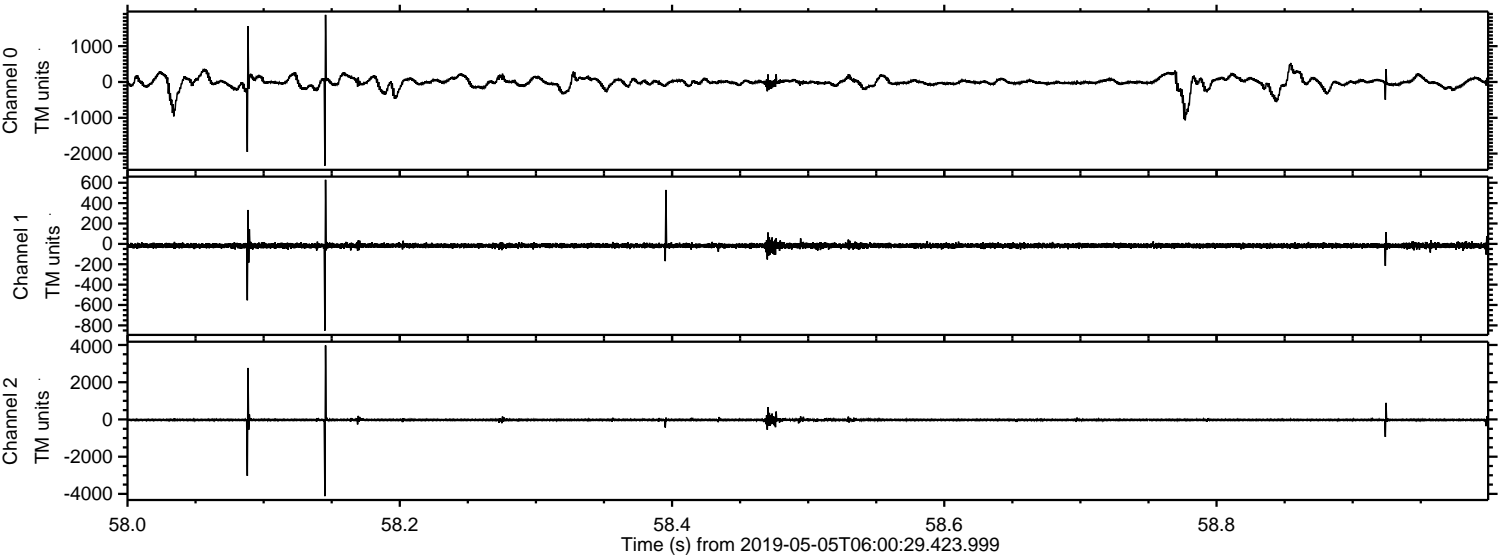


ELMAVAN 3D WAVEFORMS (Measured data sampled at 50 kHz) 51000 packets of 144 samples from 2019-05-05T06:00:29.423.999. Part 91/147

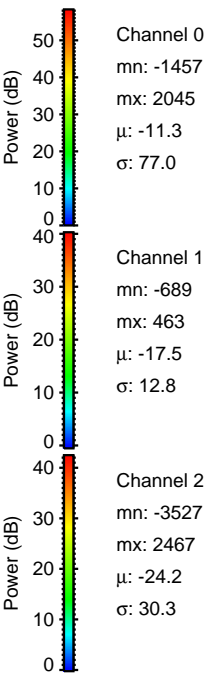
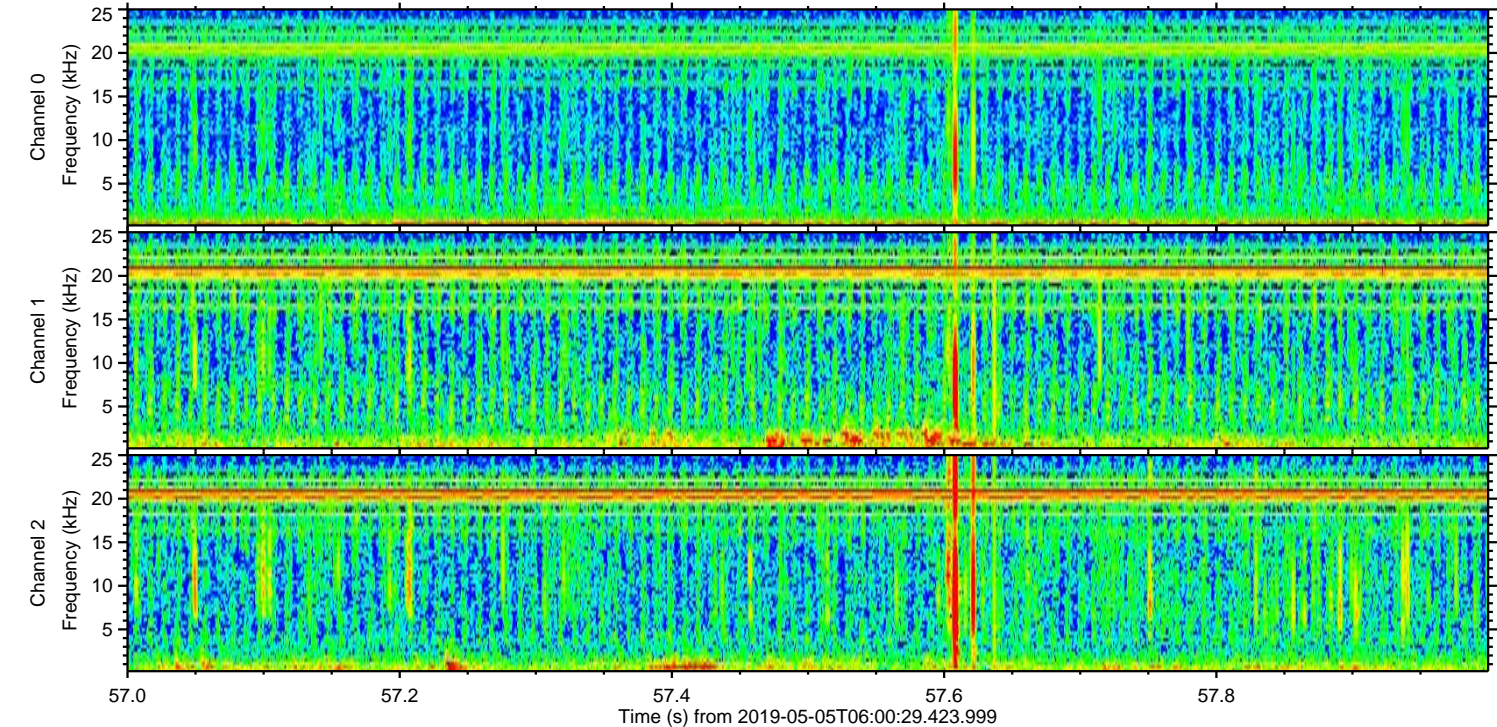
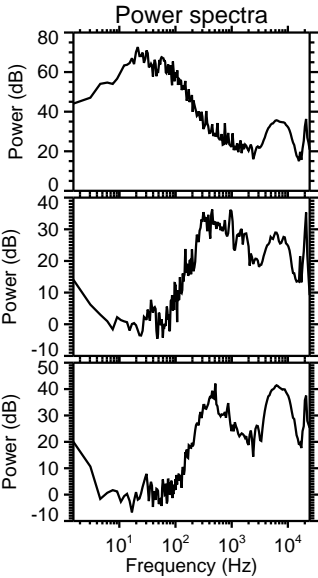
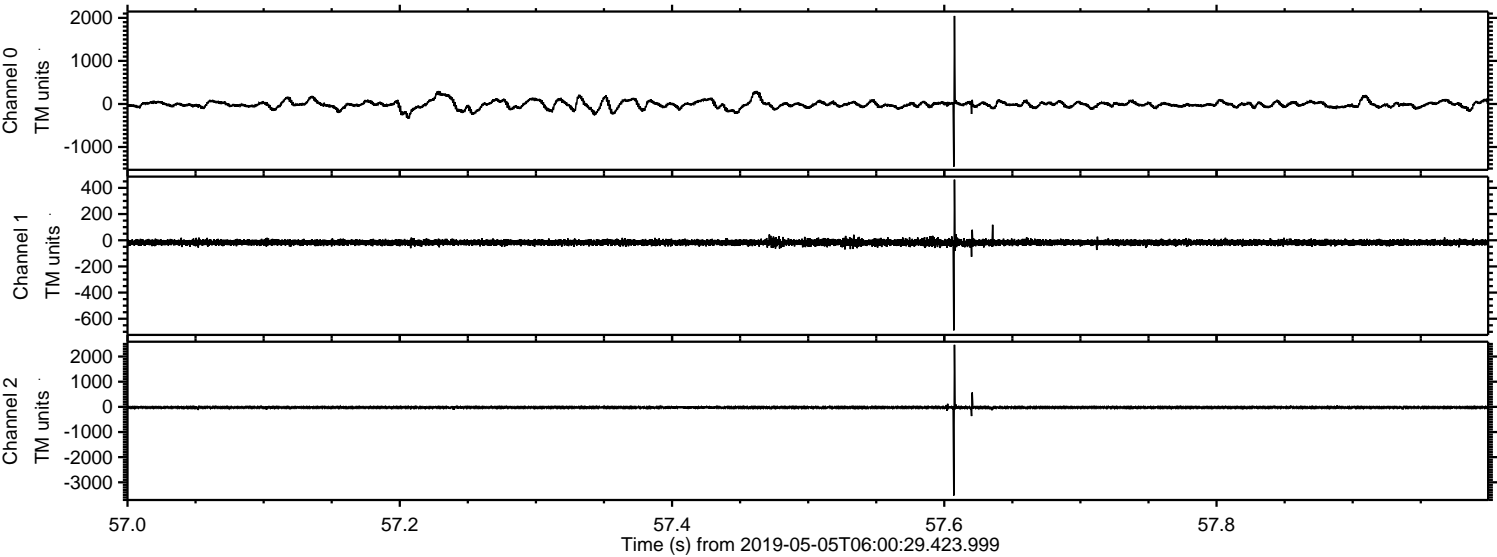
Processed Sun May 5 08:07:41 2019 by ELM ver.2012-10-06 from 001__elm20190505_060028__dat00.bin



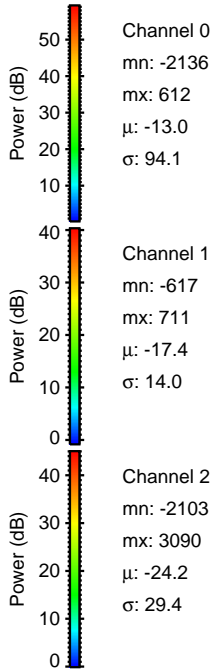
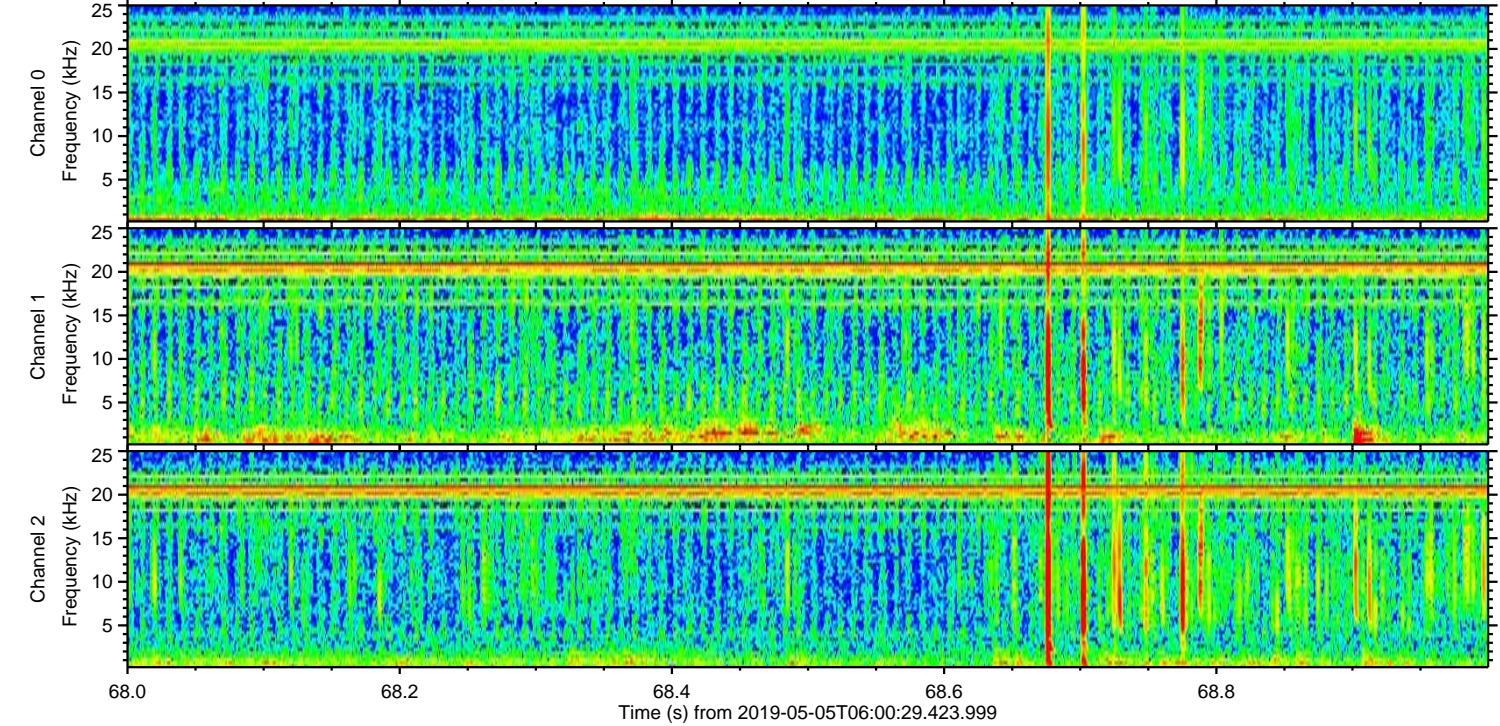
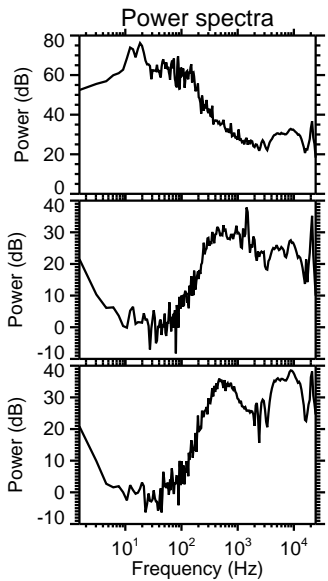
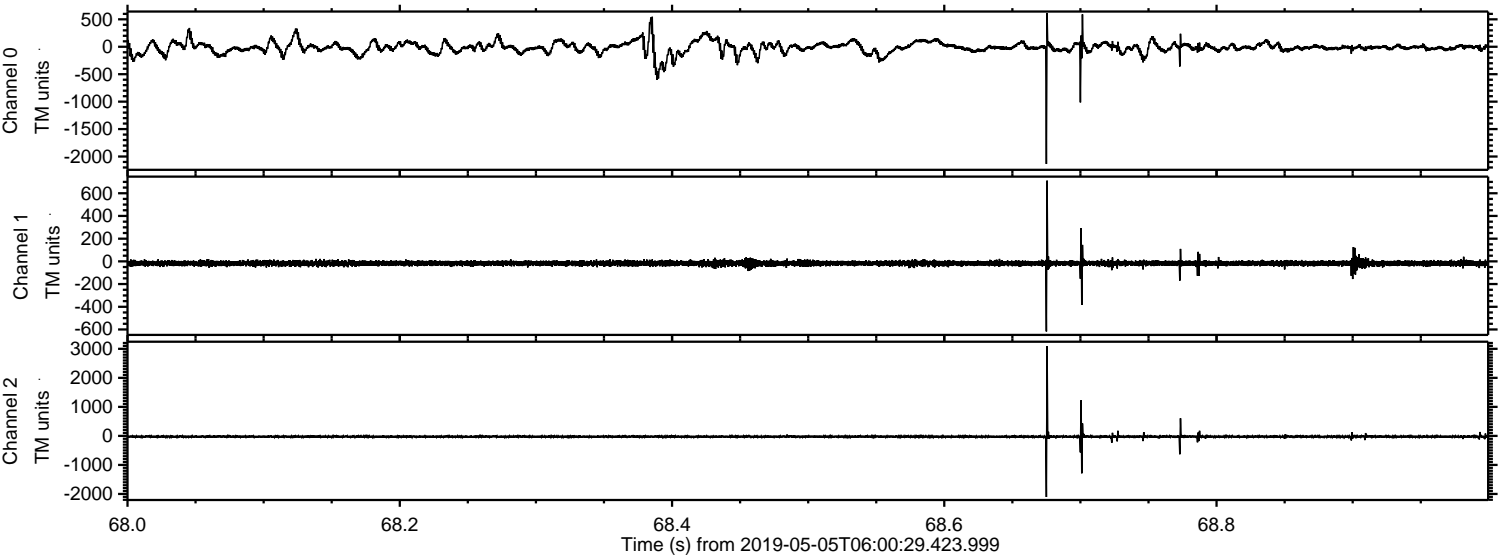
Processed Sun May 5 08:07:42 2019 by ELM ver.2012-10-06 from 001__elm20190505_060028__dat00.bin



Processed Sun May 5 08:07:43 2019 by ELM ver.2012-10-06 from 001__elm20190505_060028__dat00.bin



Processed Sun May 5 08:07:43 2019 by ELM ver.2012-10-06 from 001__elm20190505_060028__dat00.bin



Channel 0
mn: -2136
mx: 612
 μ : -13.0
 σ : 94.1

Channel 1
mn: -617
mx: 711
 μ : -17.4
 σ : 14.0

Channel 2
mn: -2103
mx: 3090
 μ : -24.2
 σ : 29.4

Processed Sun May 5 08:07:44 2019 by ELM ver.2012-10-06 from 001__elm20190505_060028__dat00.bin

