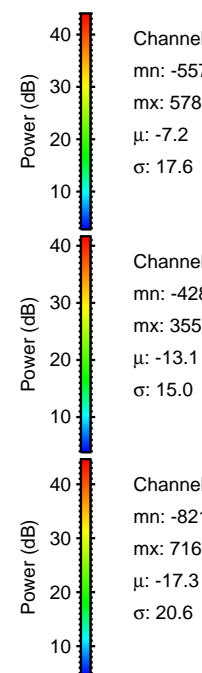
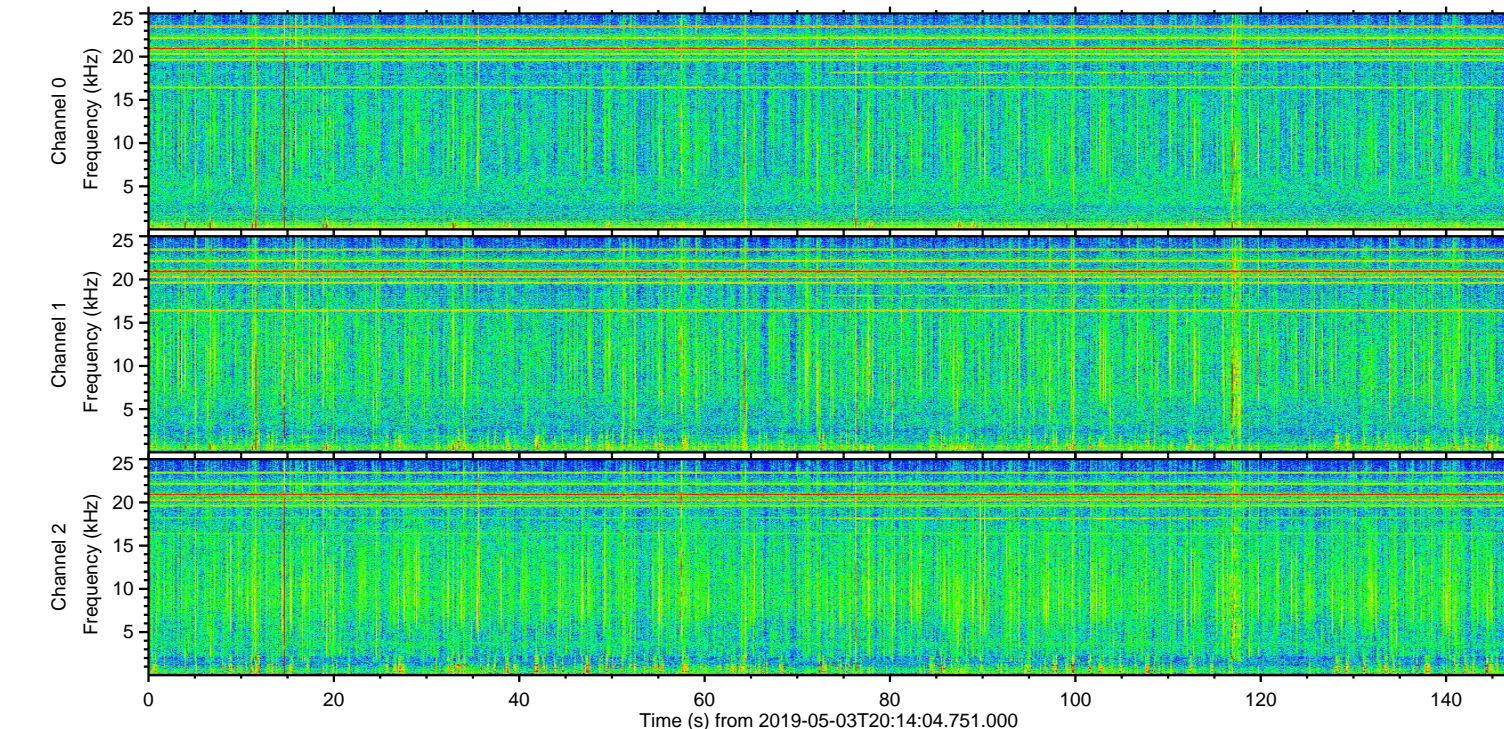
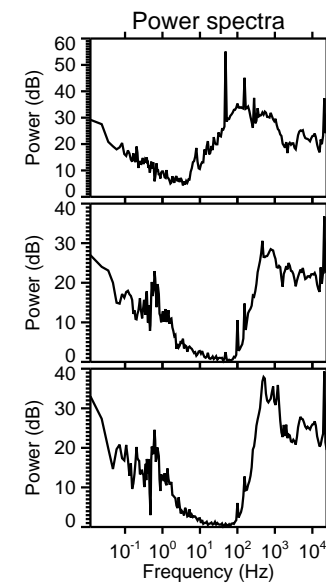
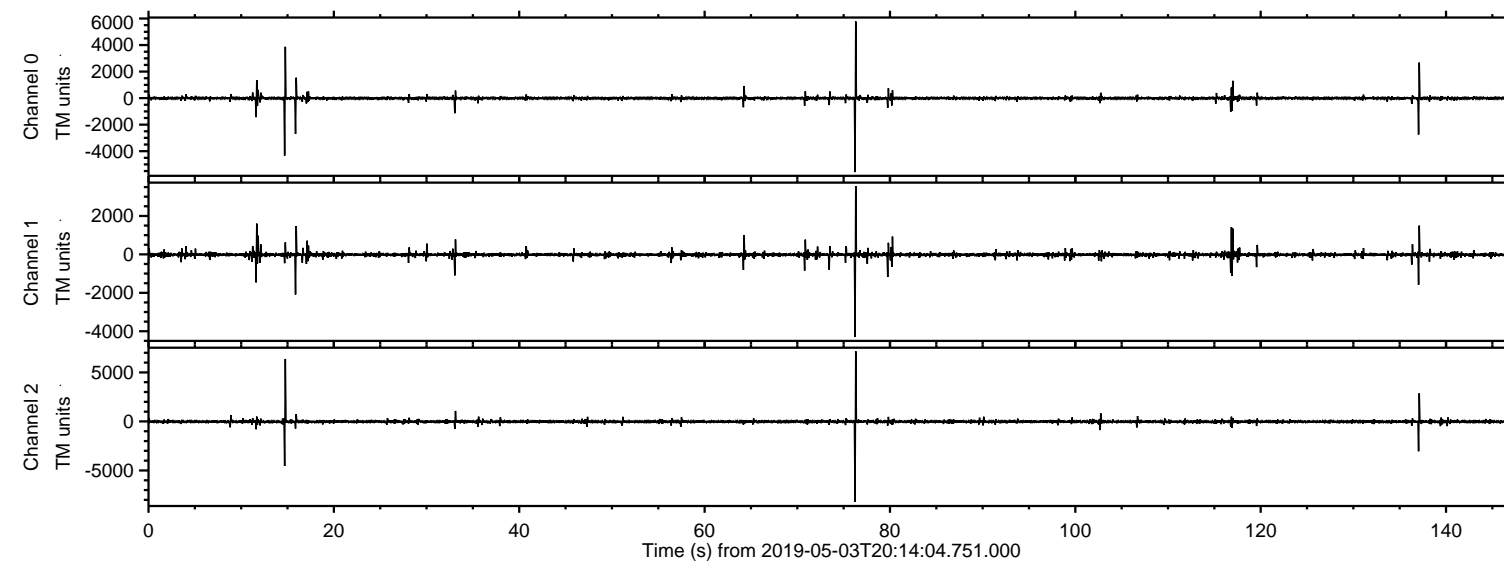
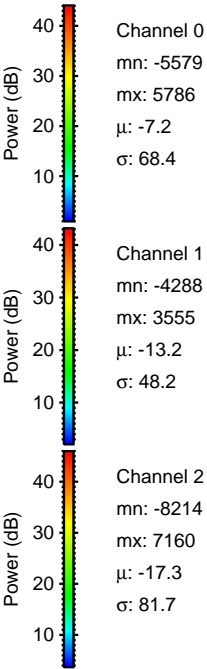
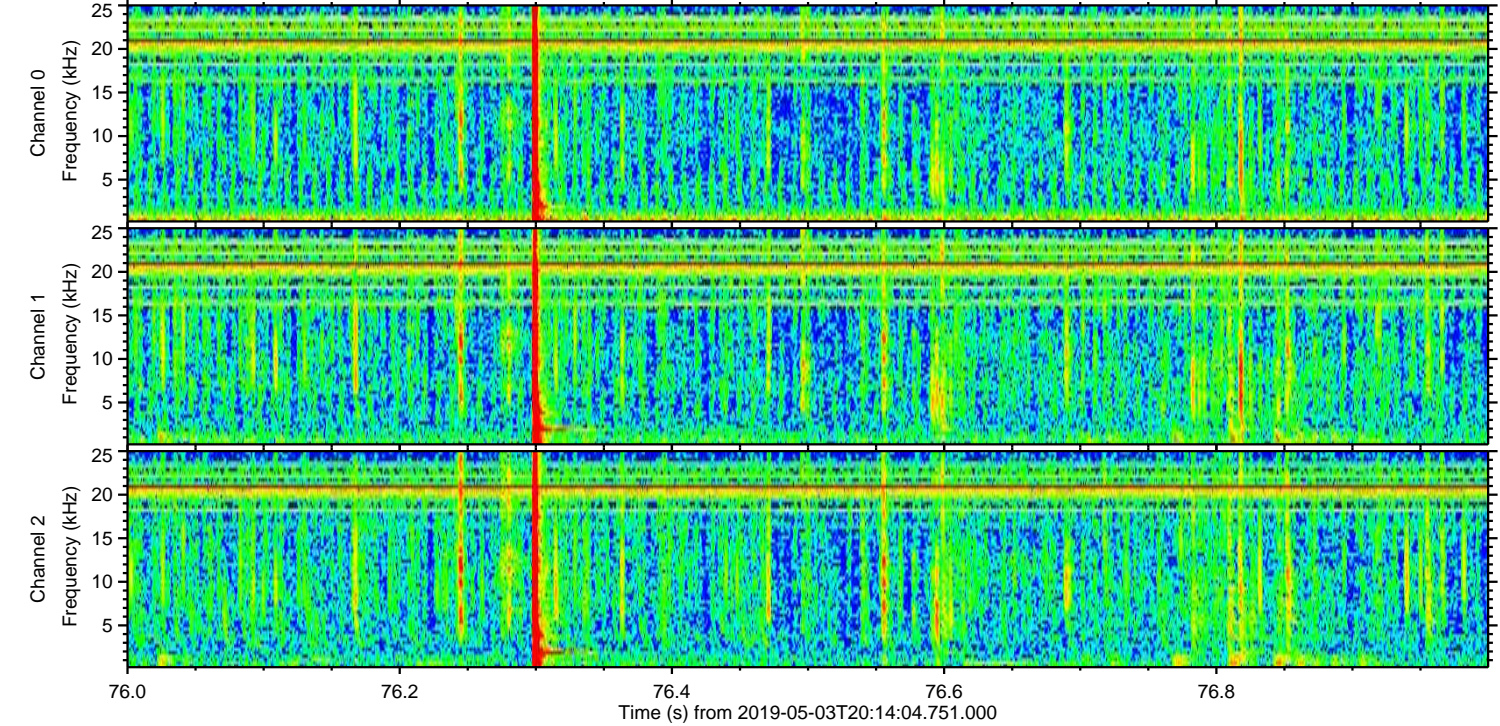
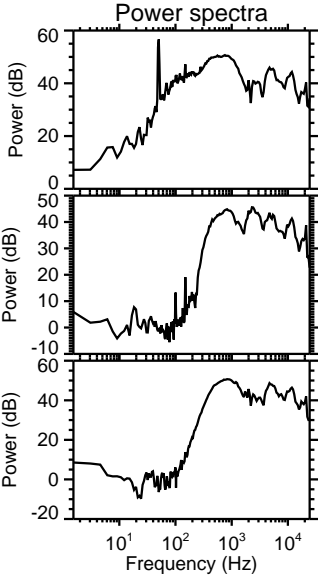
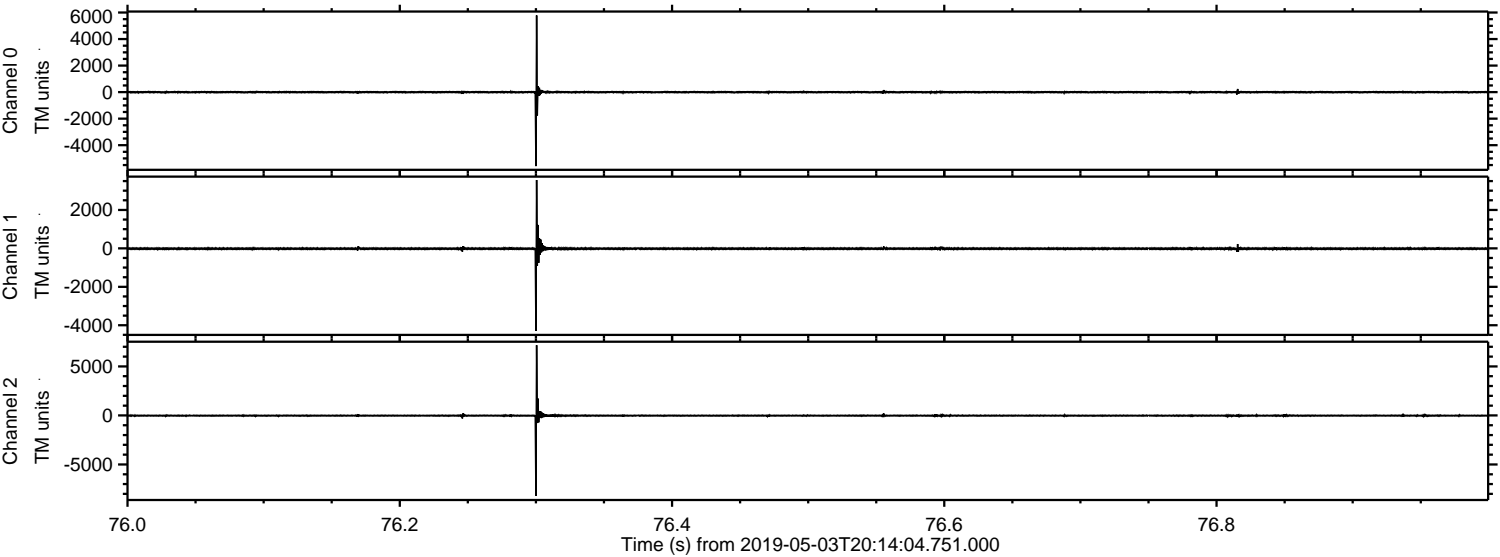


ELMAVAN 3D WAVEFORMS (Measured data sampled at 50 kHz) 51000 packets of 144 samples from 2019-05-03T20:14:04.751.000.

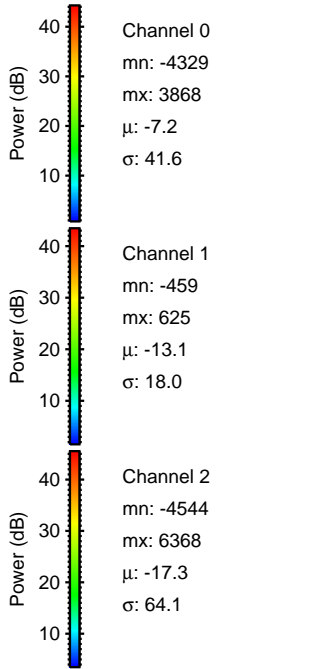
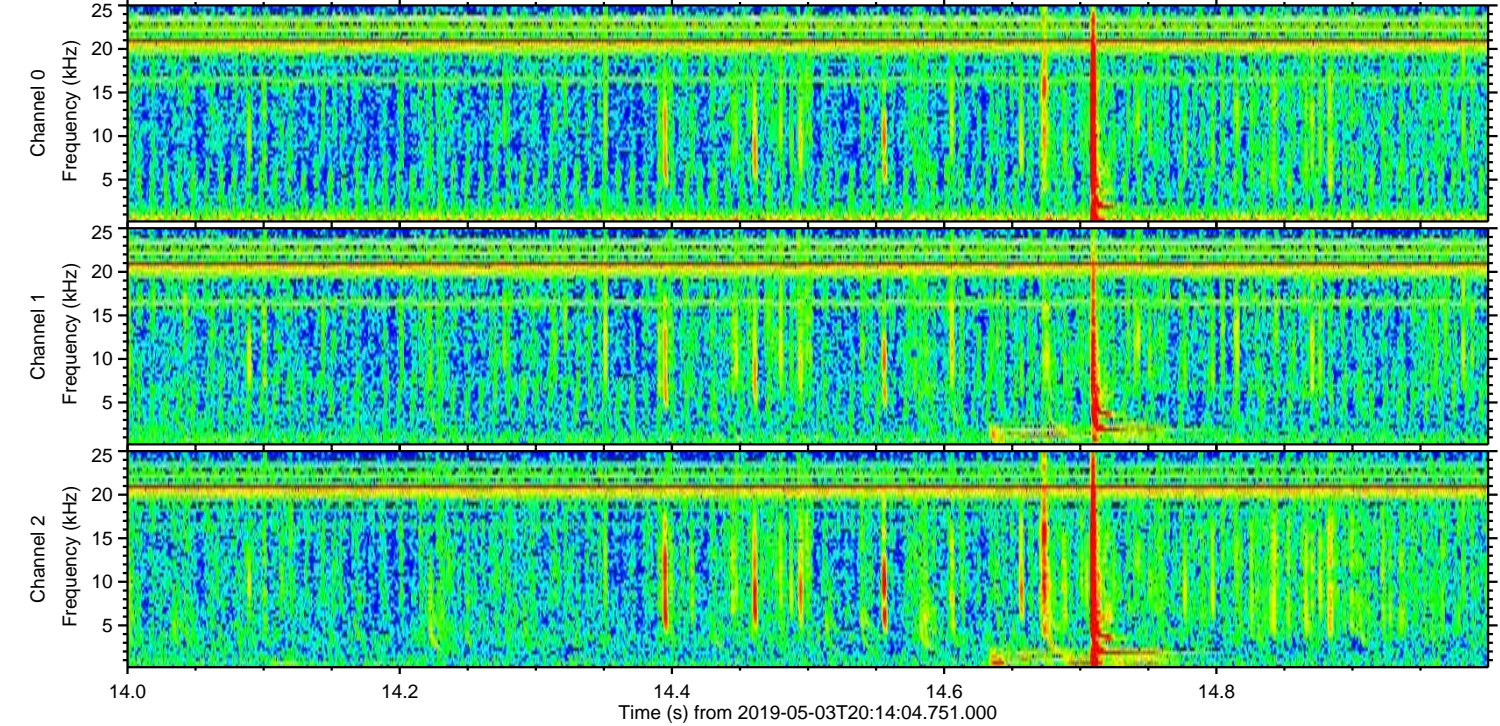
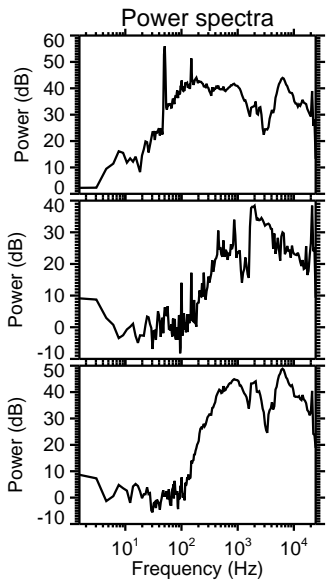
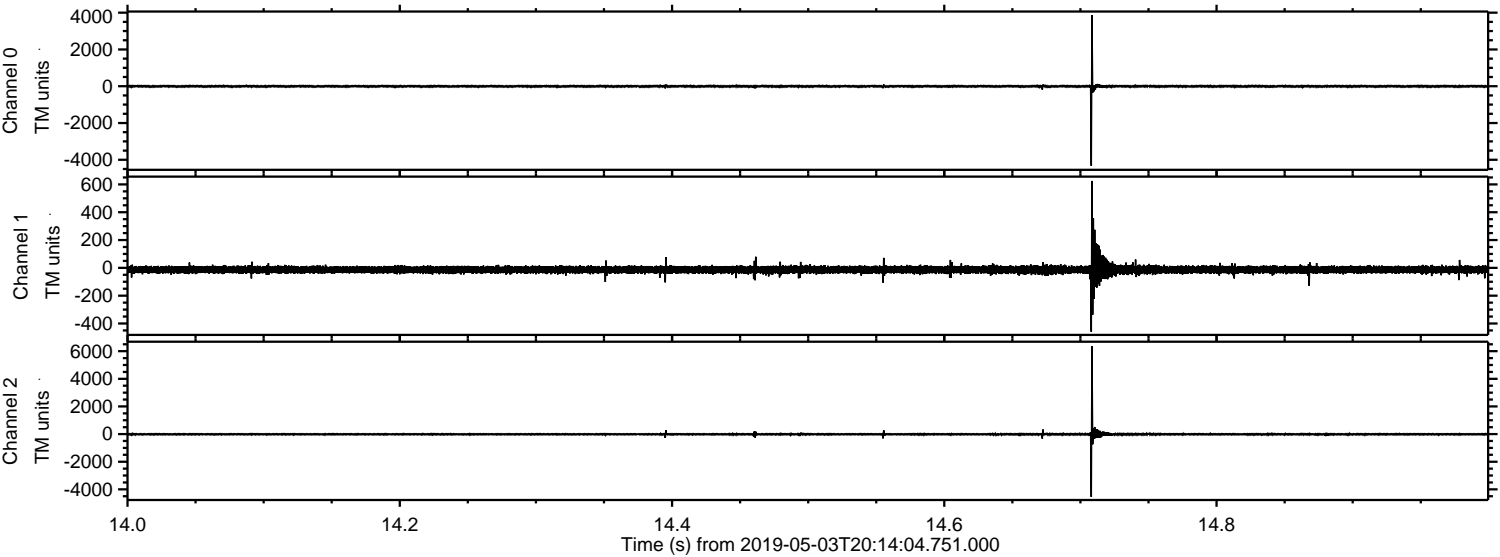
Processed Fri May 3 22:21:58 2019 by ELM ver.2012-10-06 from 001__elm20190503_201403__dat00.bin



Processed Fri May 3 22:22:04 2019 by ELM ver.2012-10-06 from 001__elm20190503_201403__dat00.bin

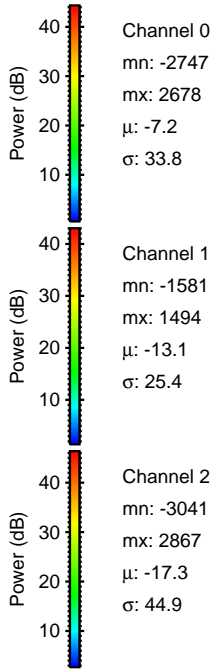
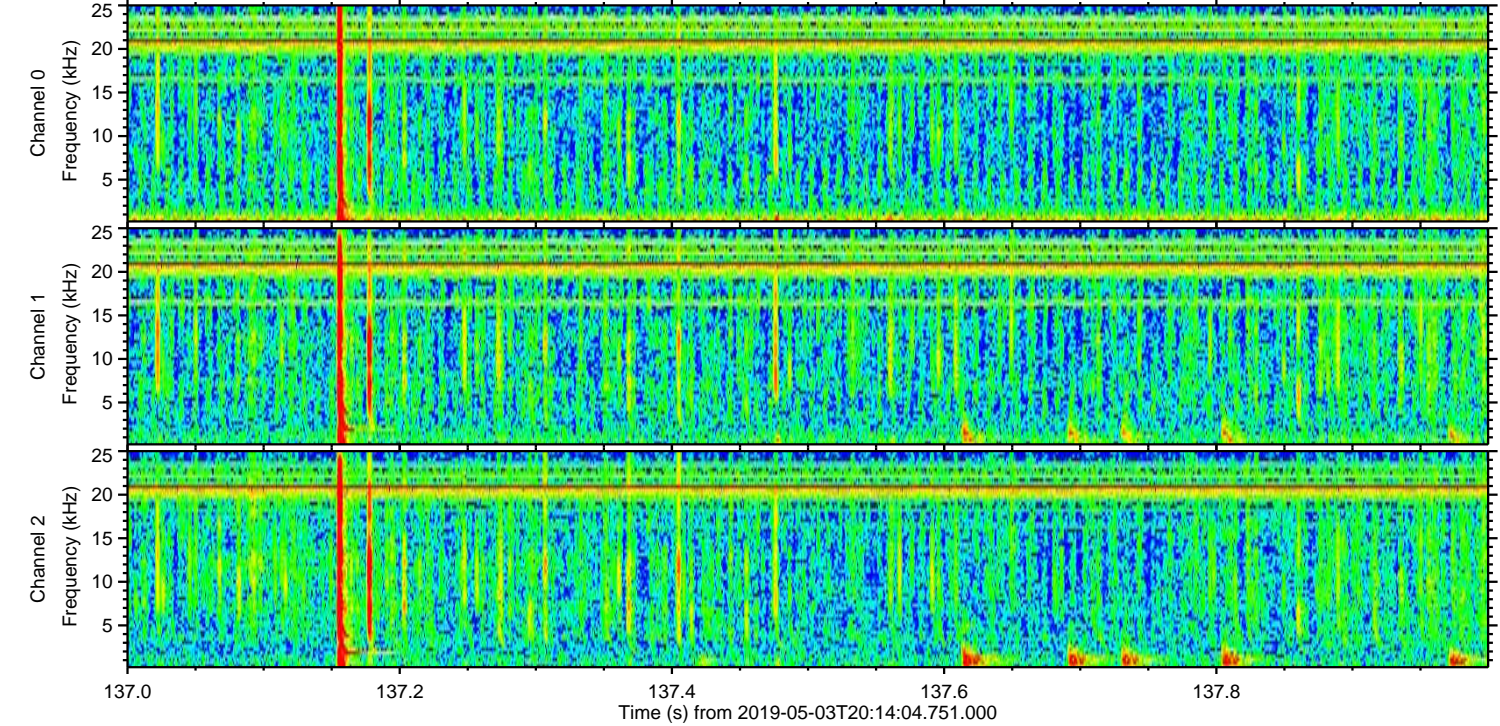
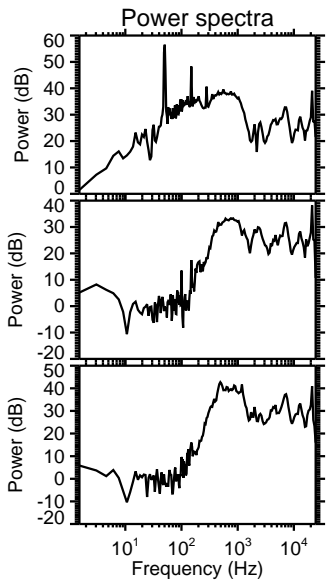
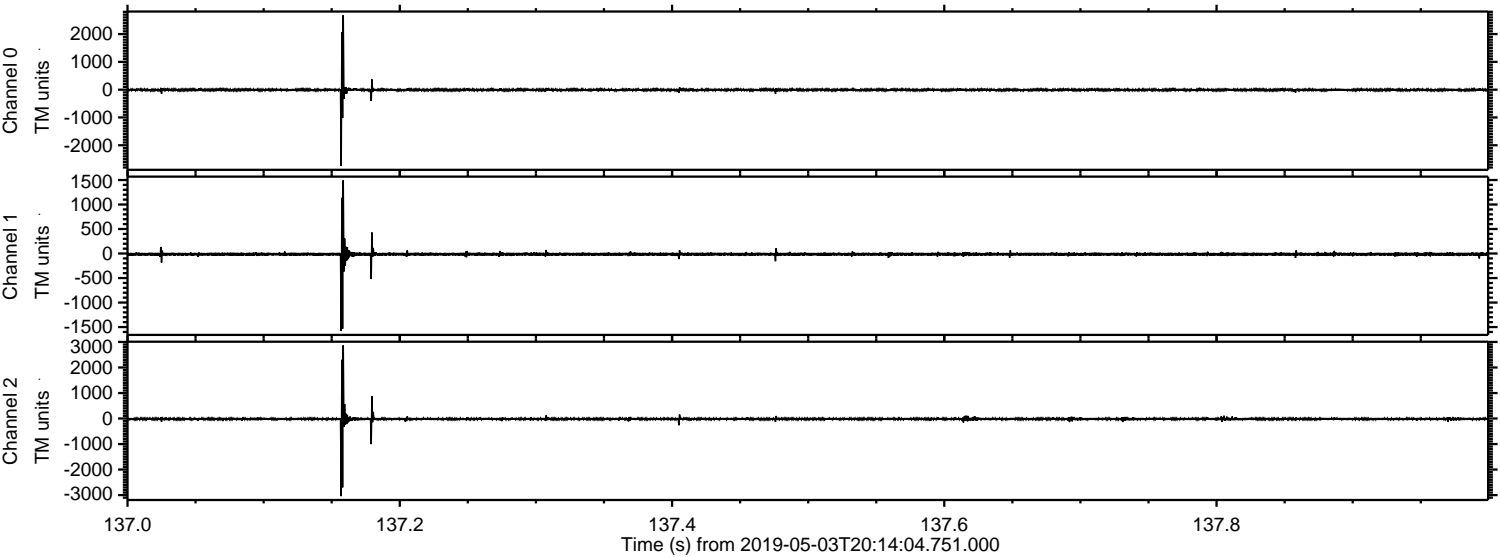


Processed Fri May 3 22:22:05 2019 by ELM ver.2012-10-06 from 001__elm20190503_201403__dat00.bin

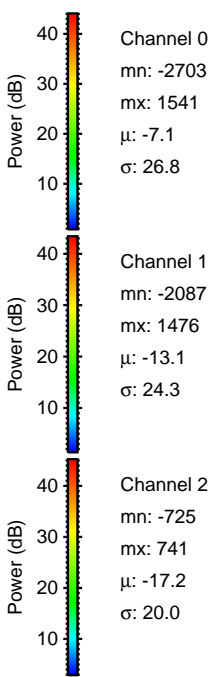
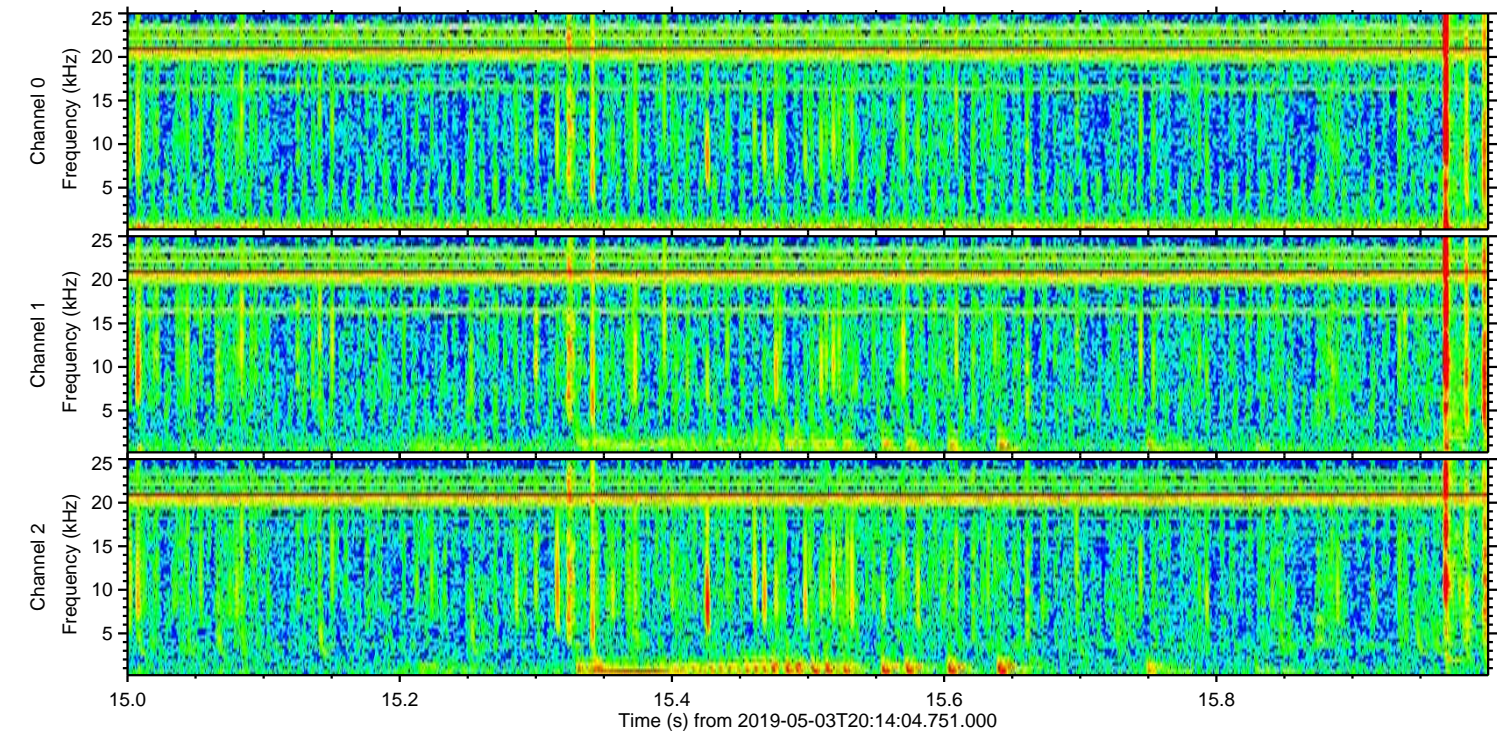
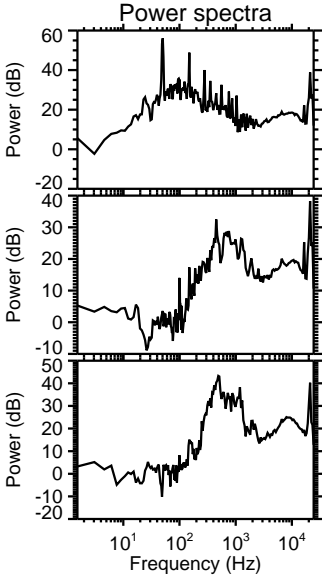
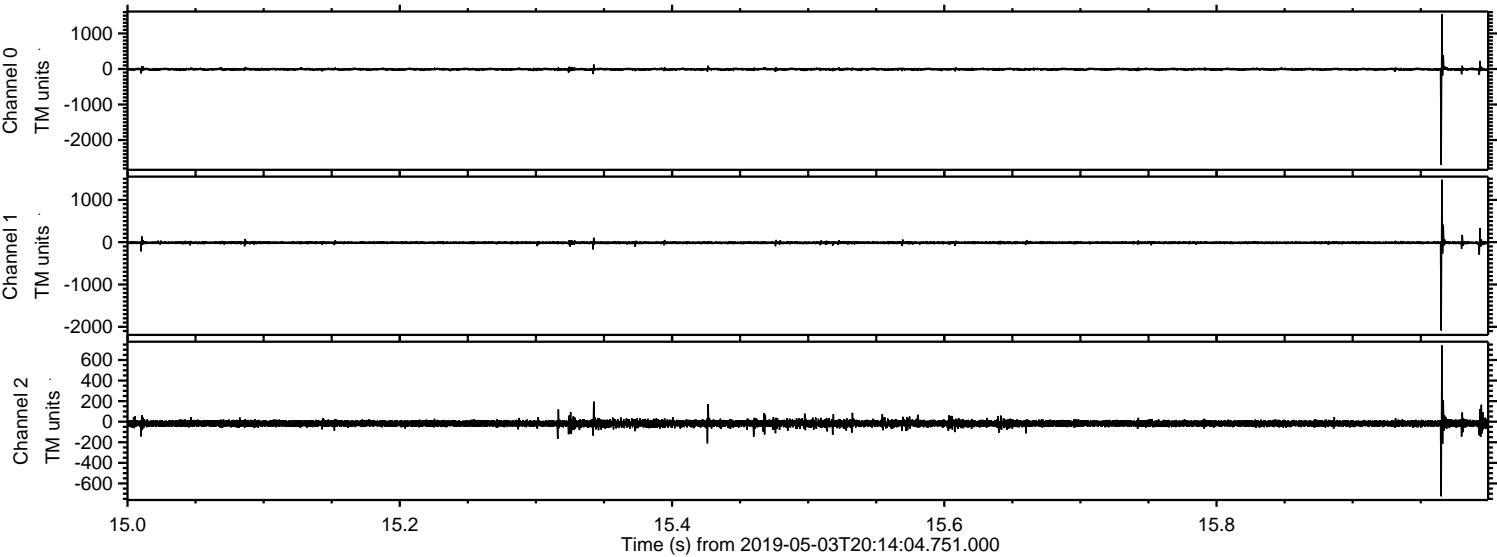


ELMAVAN 3D WAVEFORMS (Measured data sampled at 50 kHz) 51000 packets of 144 samples from 2019-05-03T20:14:04.751.000. Part 138/147

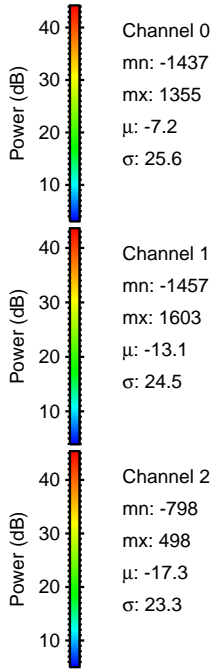
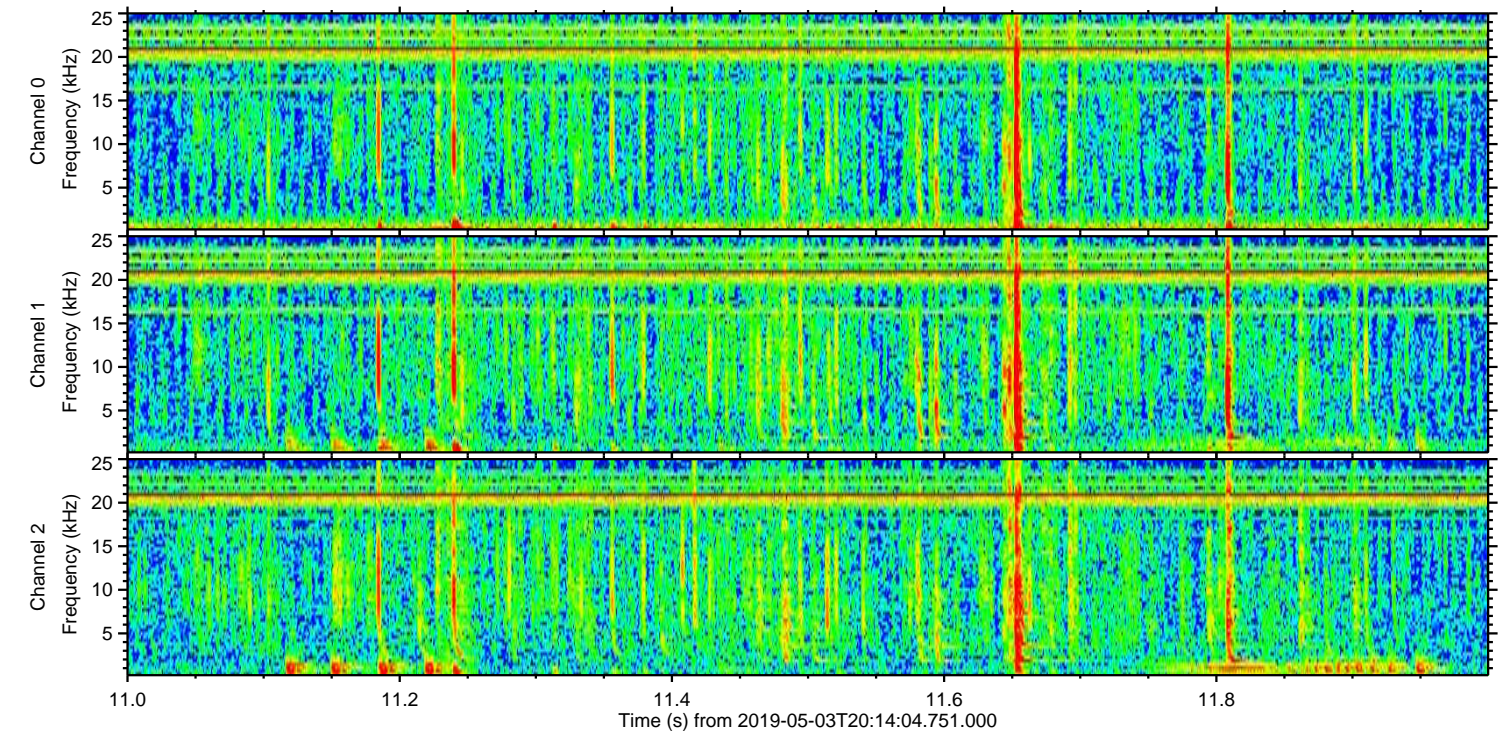
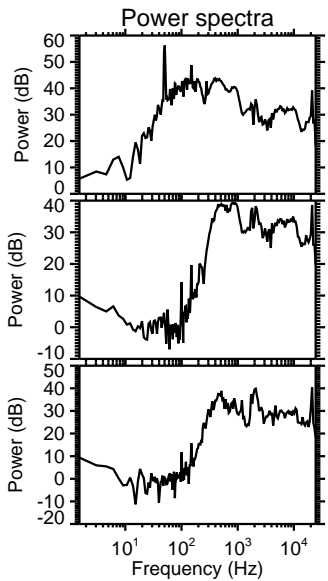
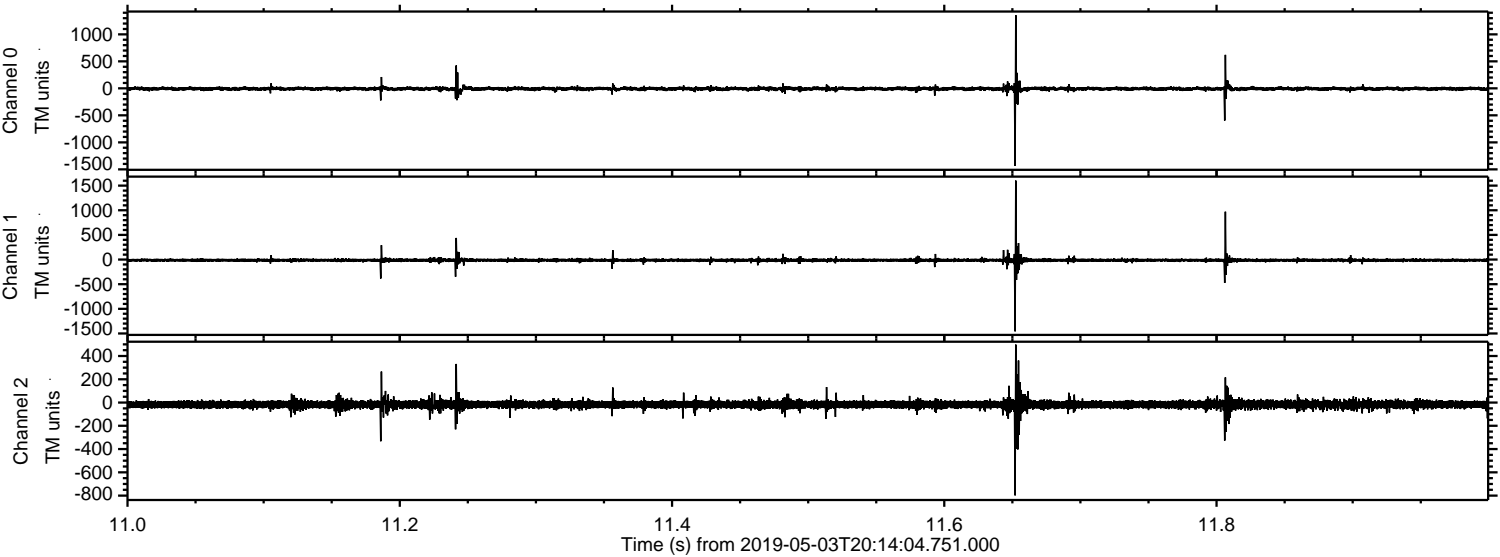
Processed Fri May 3 22:22:05 2019 by ELM ver.2012-10-06 from 001__elm20190503_201403__dat00.bin



Processed Fri May 3 22:22:06 2019 by ELM ver.2012-10-06 from 001__elm20190503_201403__dat00.bin

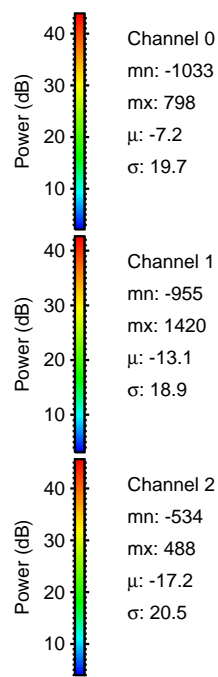
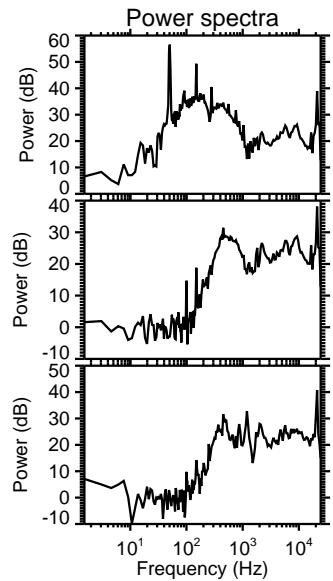
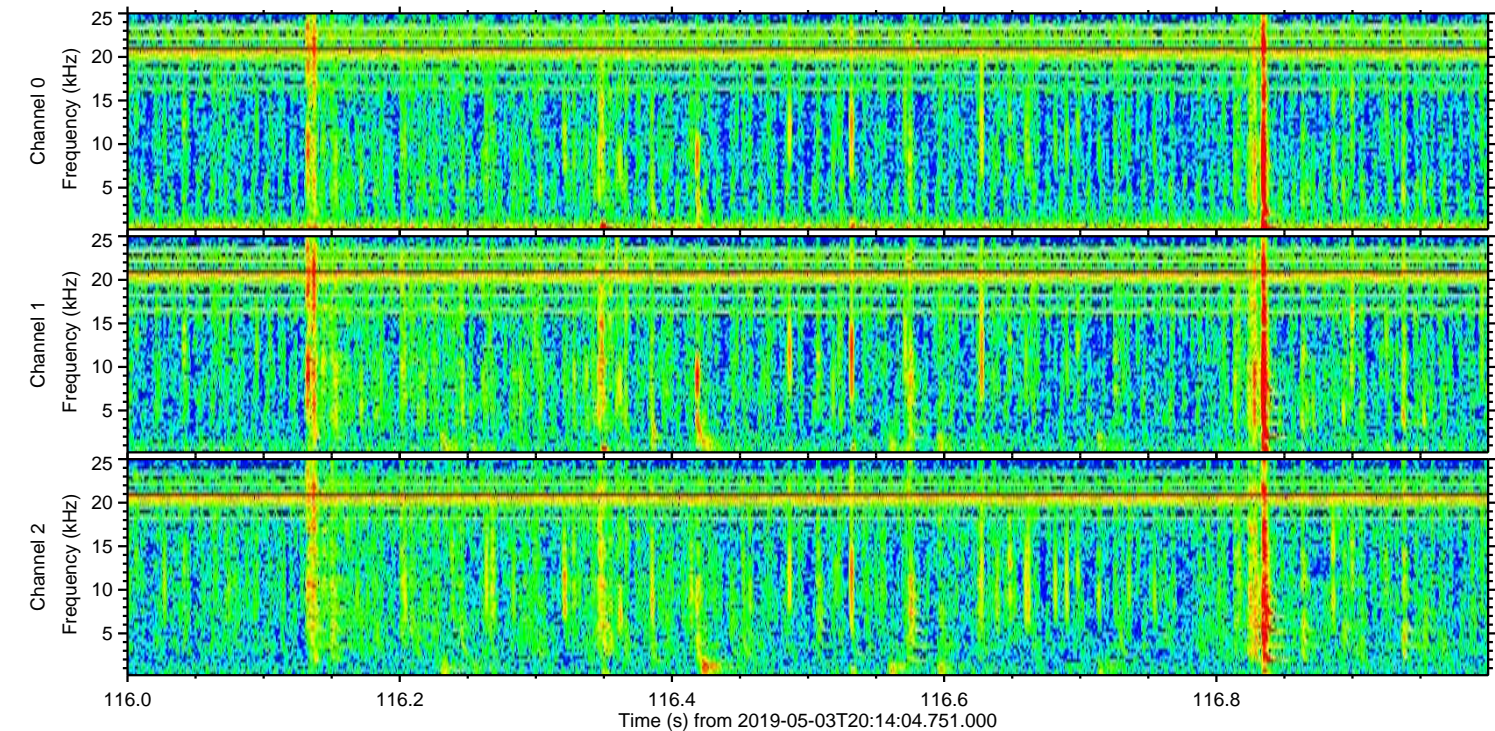
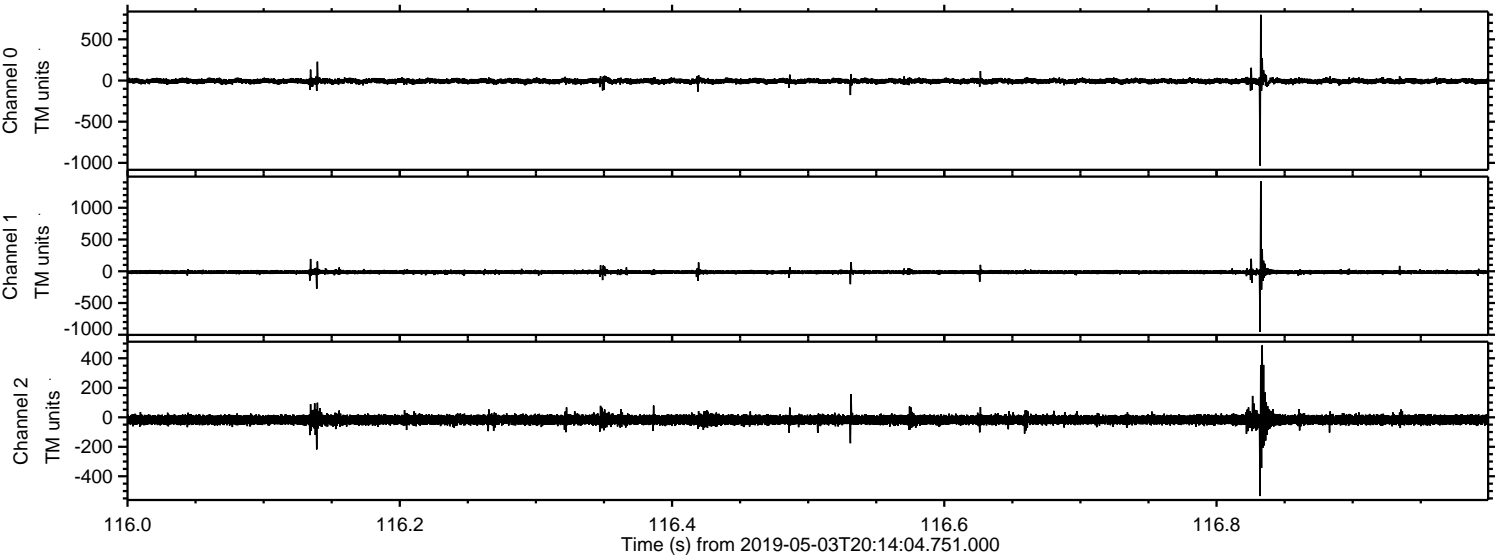


Processed Fri May 3 22:22:07 2019 by ELM ver.2012-10-06 from 001__elm20190503_201403__dat00.bin



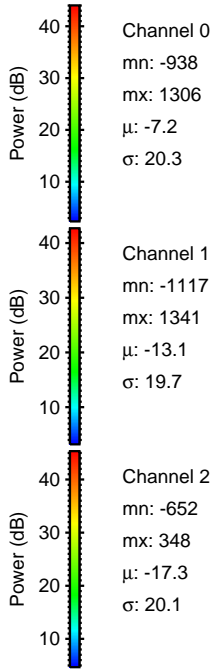
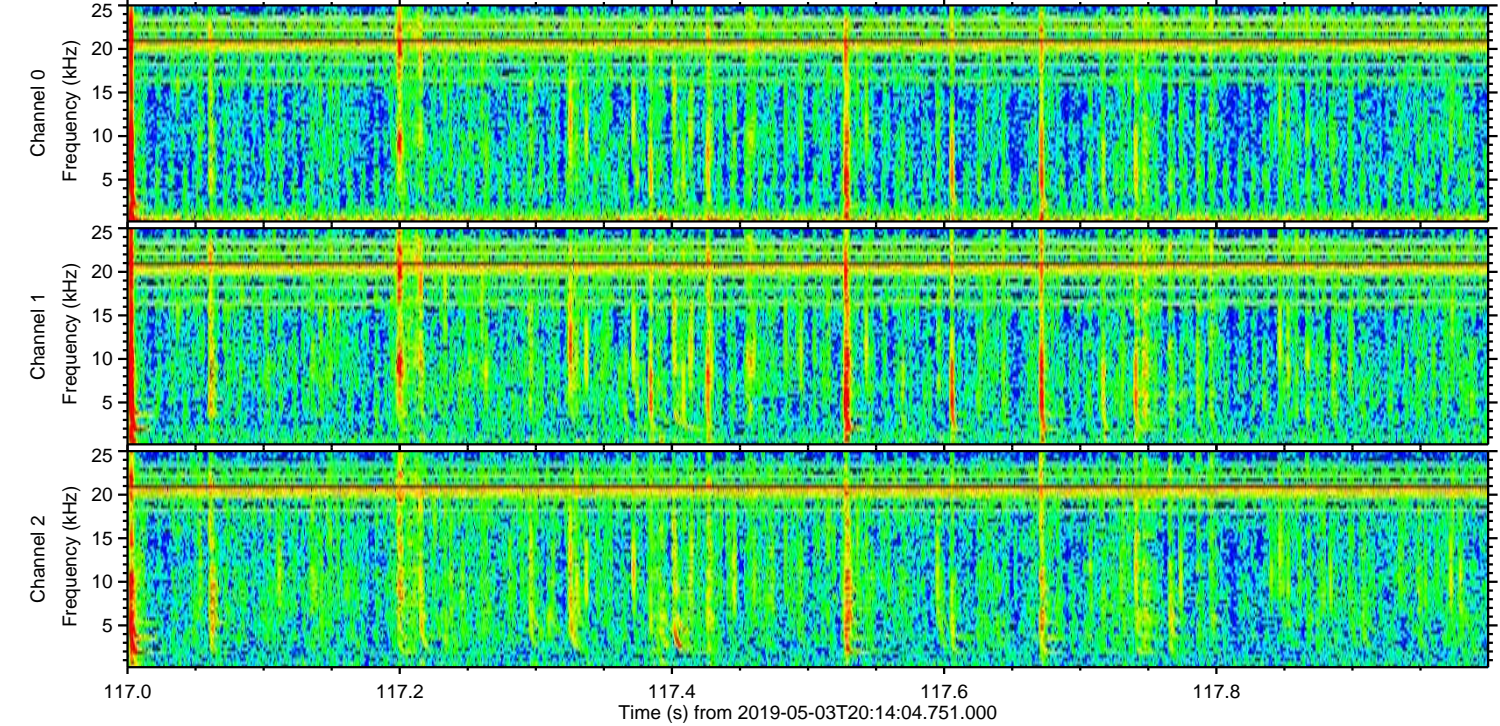
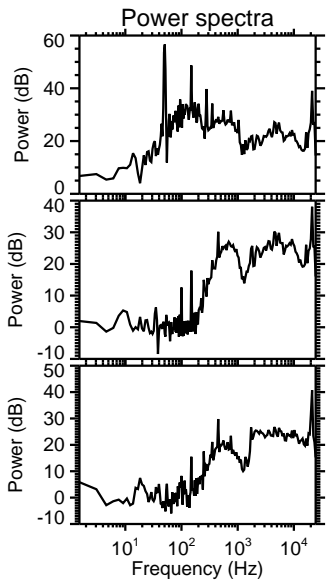
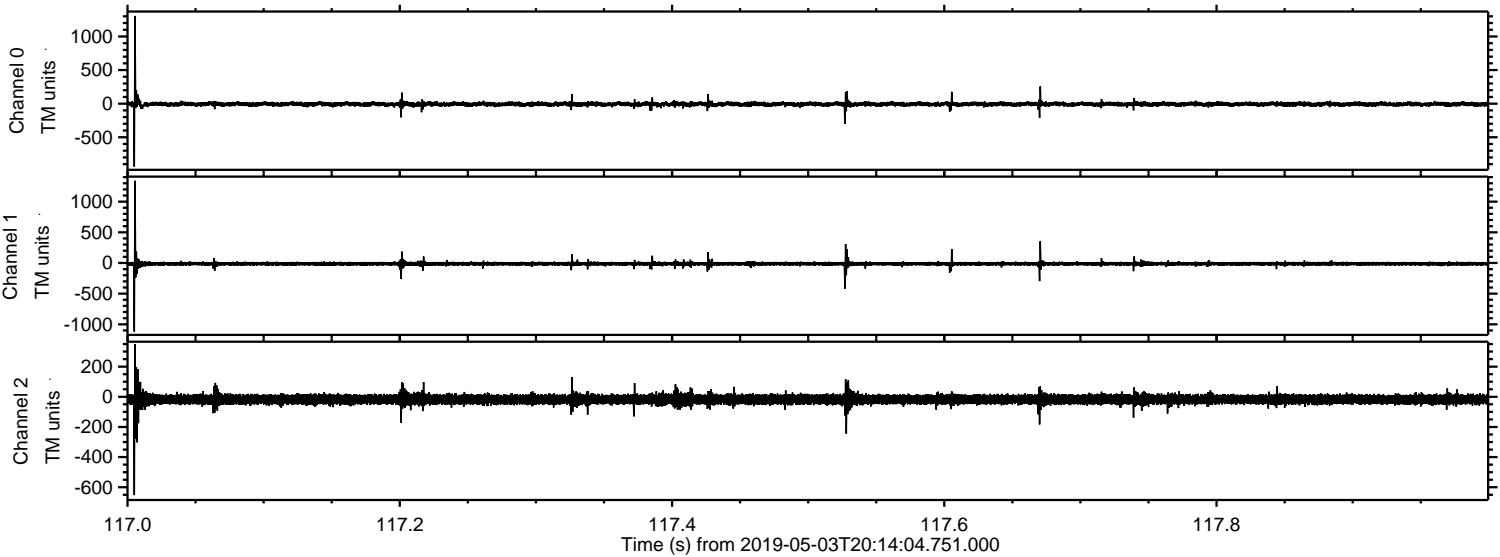
ELMAVAN 3D WAVEFORMS (Measured data sampled at 50 kHz) 51000 packets of 144 samples from 2019-05-03T20:14:04.751.000. Part 117/147

Processed Fri May 3 22:22:07 2019 by ELM ver.2012-10-06 from 001__elm20190503_201403__dat00.bin

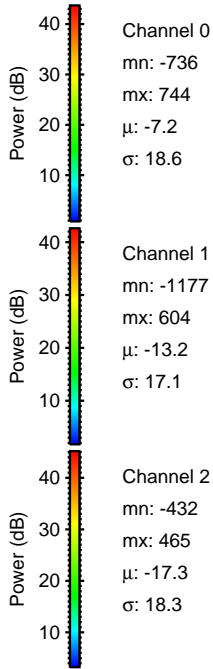
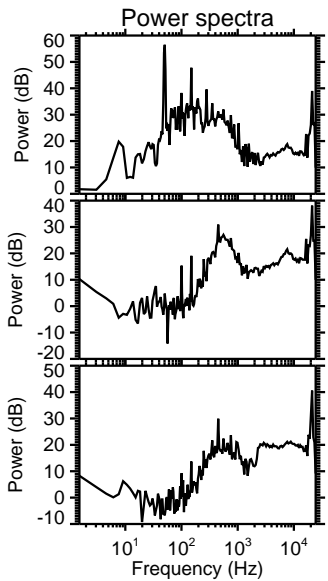
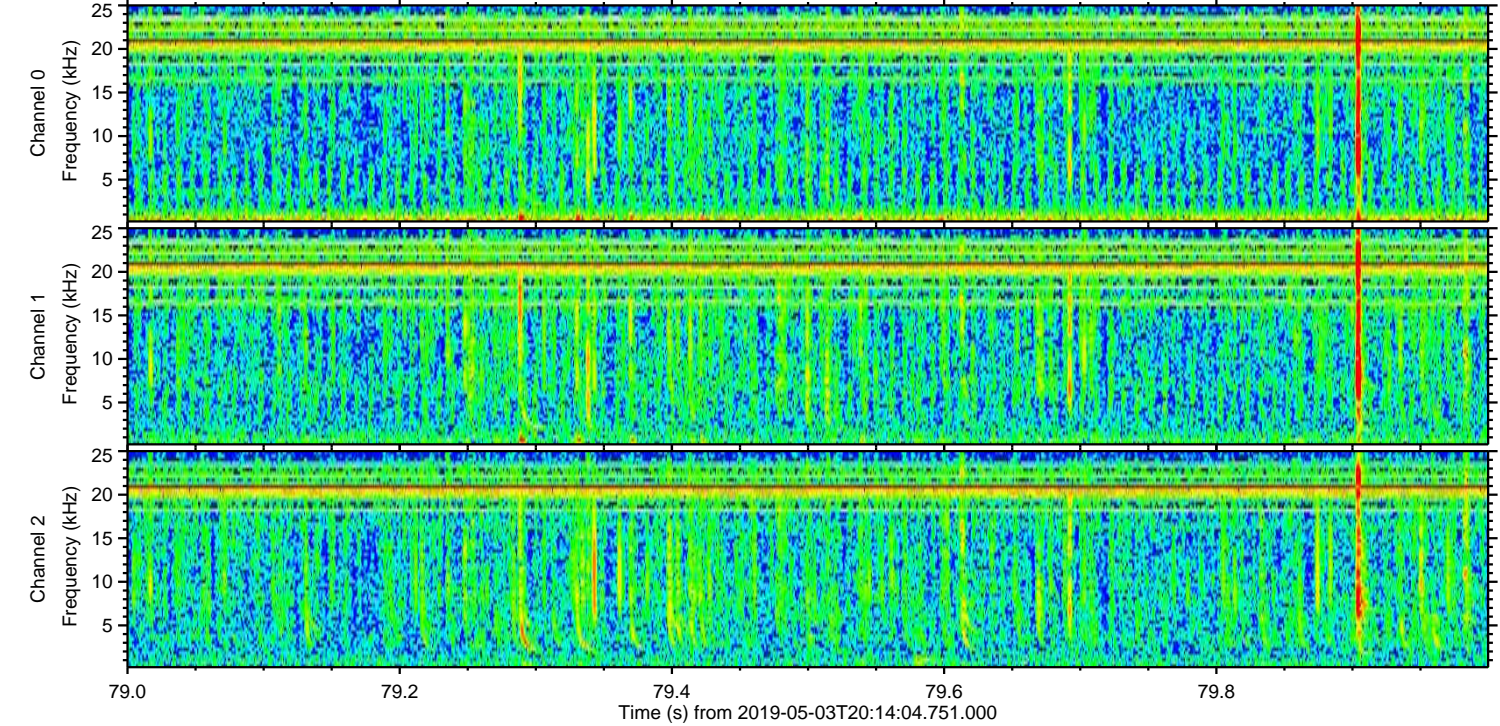
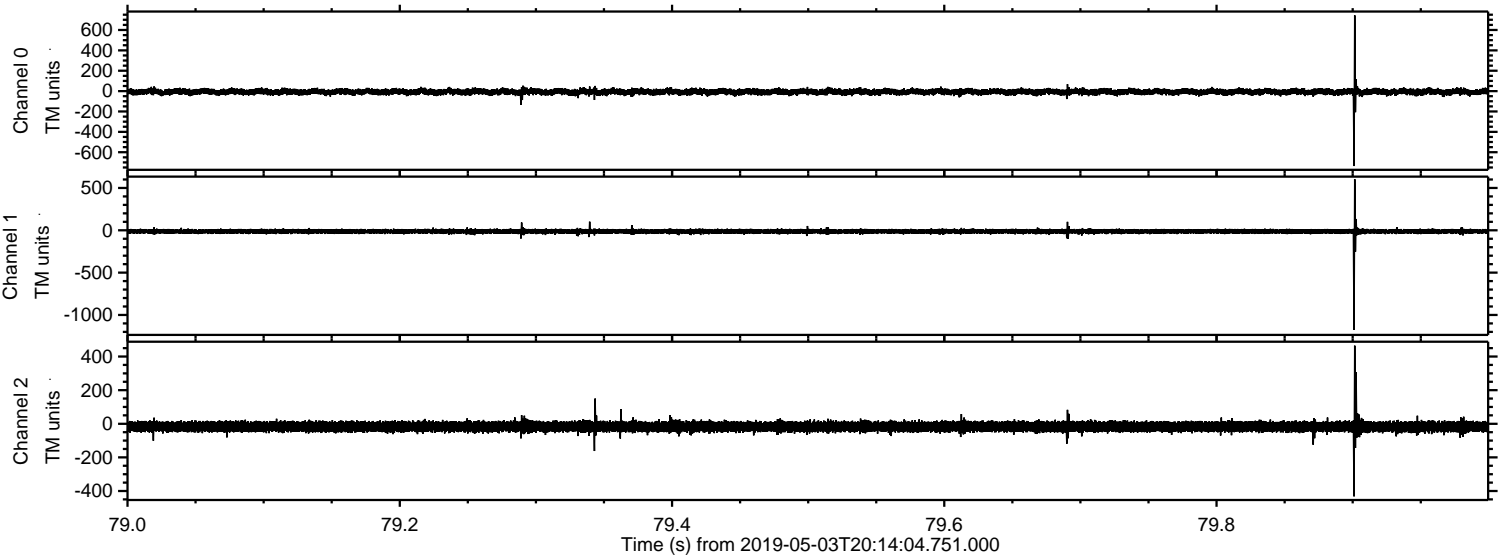


ELMAVAN 3D WAVEFORMS (Measured data sampled at 50 kHz) 51000 packets of 144 samples from 2019-05-03T20:14:04.751.000. Part 118/147

Processed Fri May 3 22:22:08 2019 by ELM ver.2012-10-06 from 001__elm20190503_201403__dat00.bin



Processed Fri May 3 22:22:08 2019 by ELM ver.2012-10-06 from 001__elm20190503_201403__dat00.bin

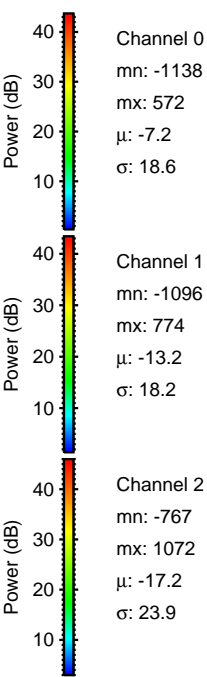
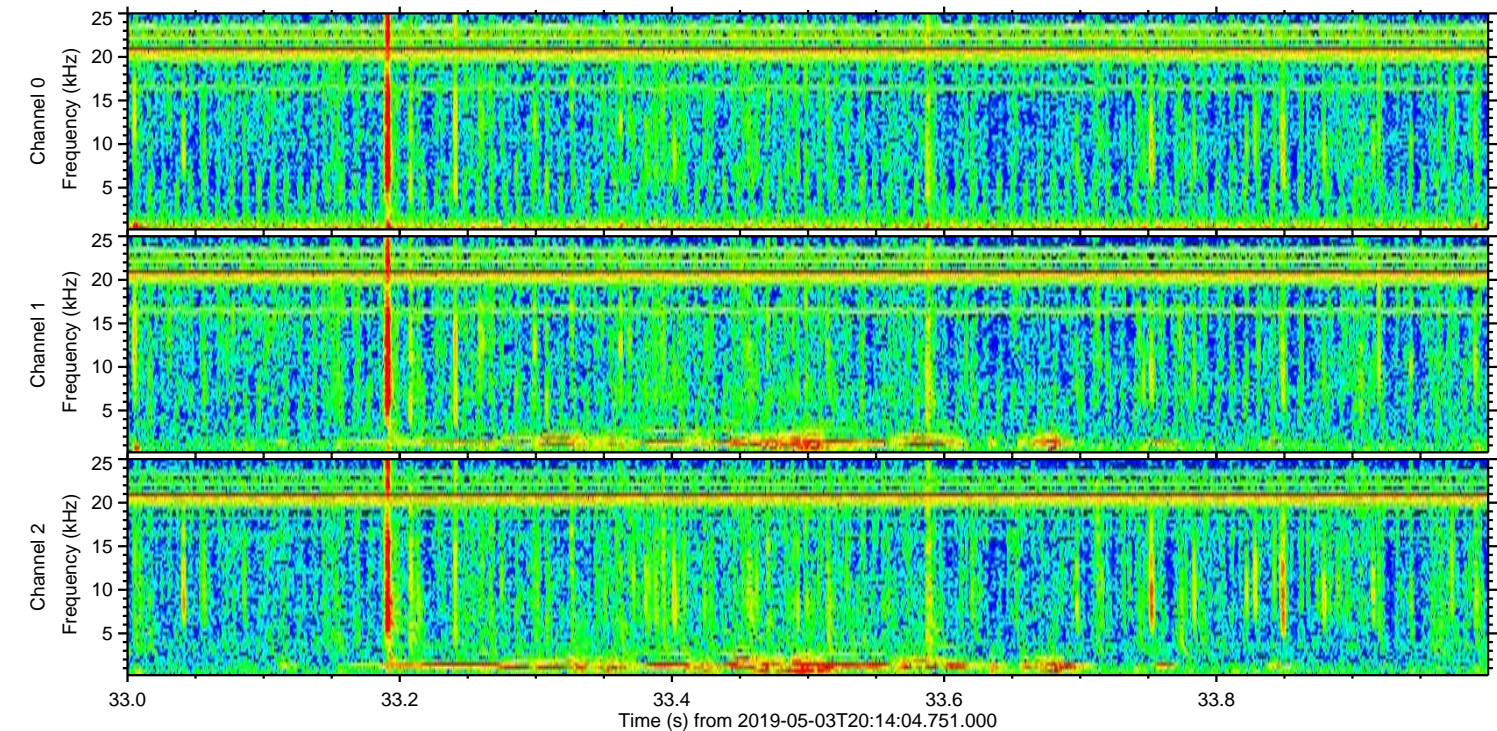
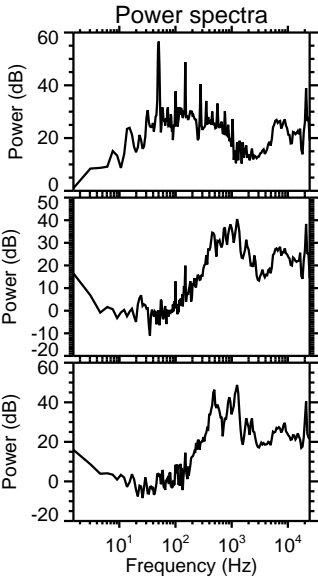
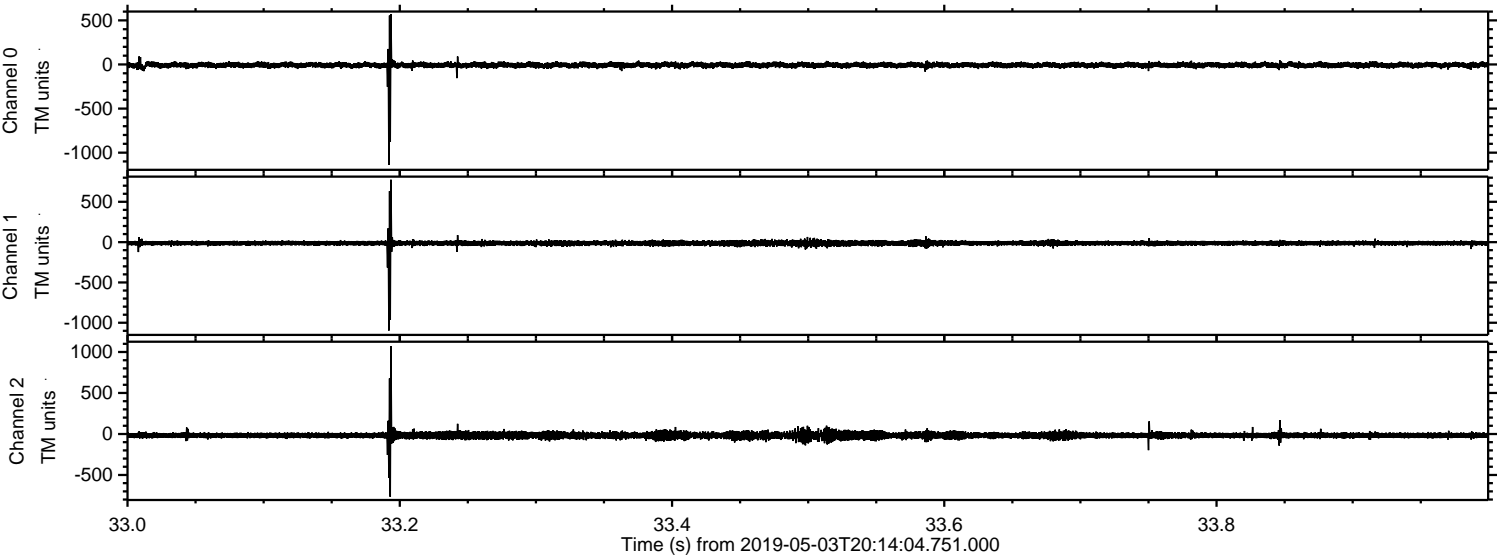


Channel 0
mn: -736
mx: 744
 μ : -7.2
 σ : 18.6

Channel 1
mn: -1177
mx: 604
 μ : -13.2
 σ : 17.1

Channel 2
mn: -432
mx: 465
 μ : -17.3
 σ : 18.3

Processed Fri May 3 22:22:09 2019 by ELM ver.2012-10-06 from 001__elm20190503_201403__dat00.bin



Processed Fri May 3 22:22:10 2019 by ELM ver.2012-10-06 from 001__elm20190503_201403__dat00.bin

