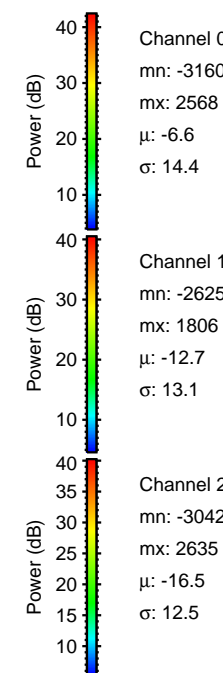
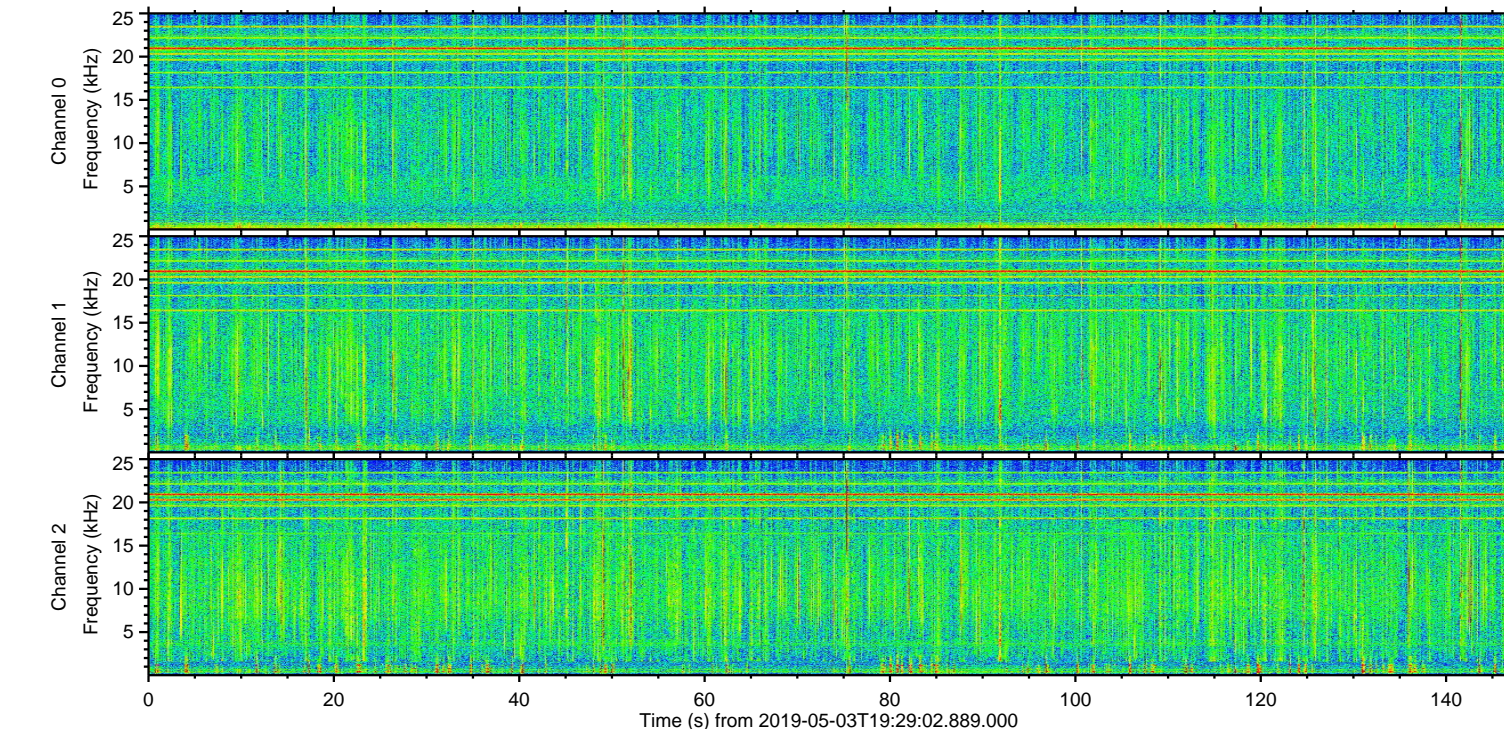
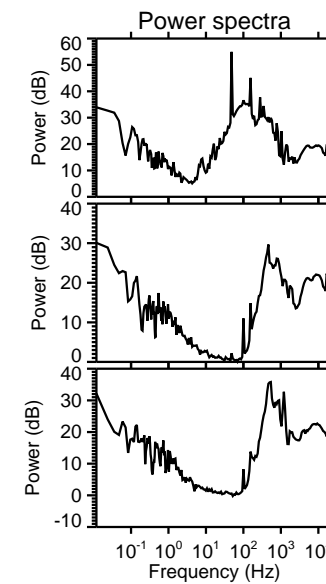
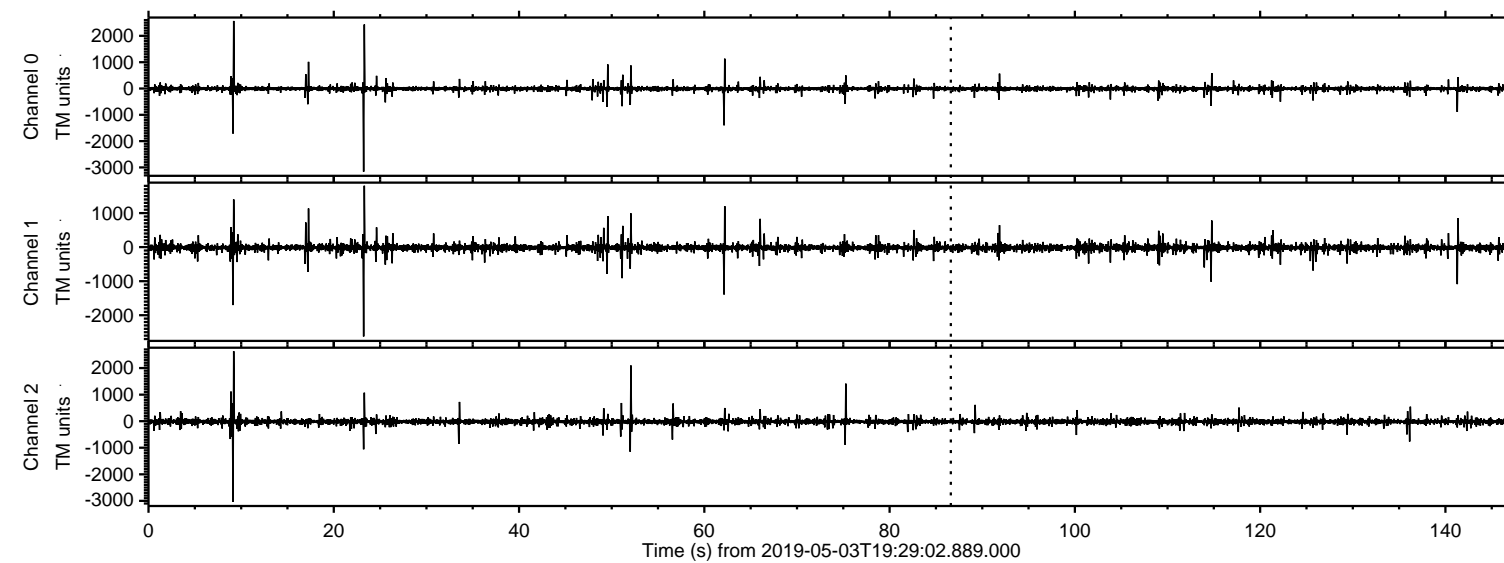
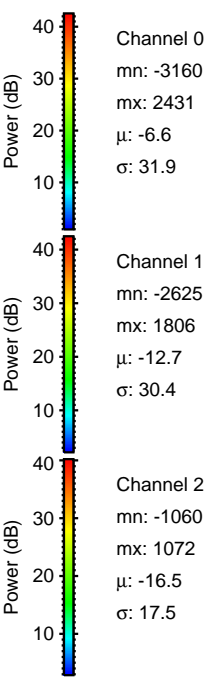
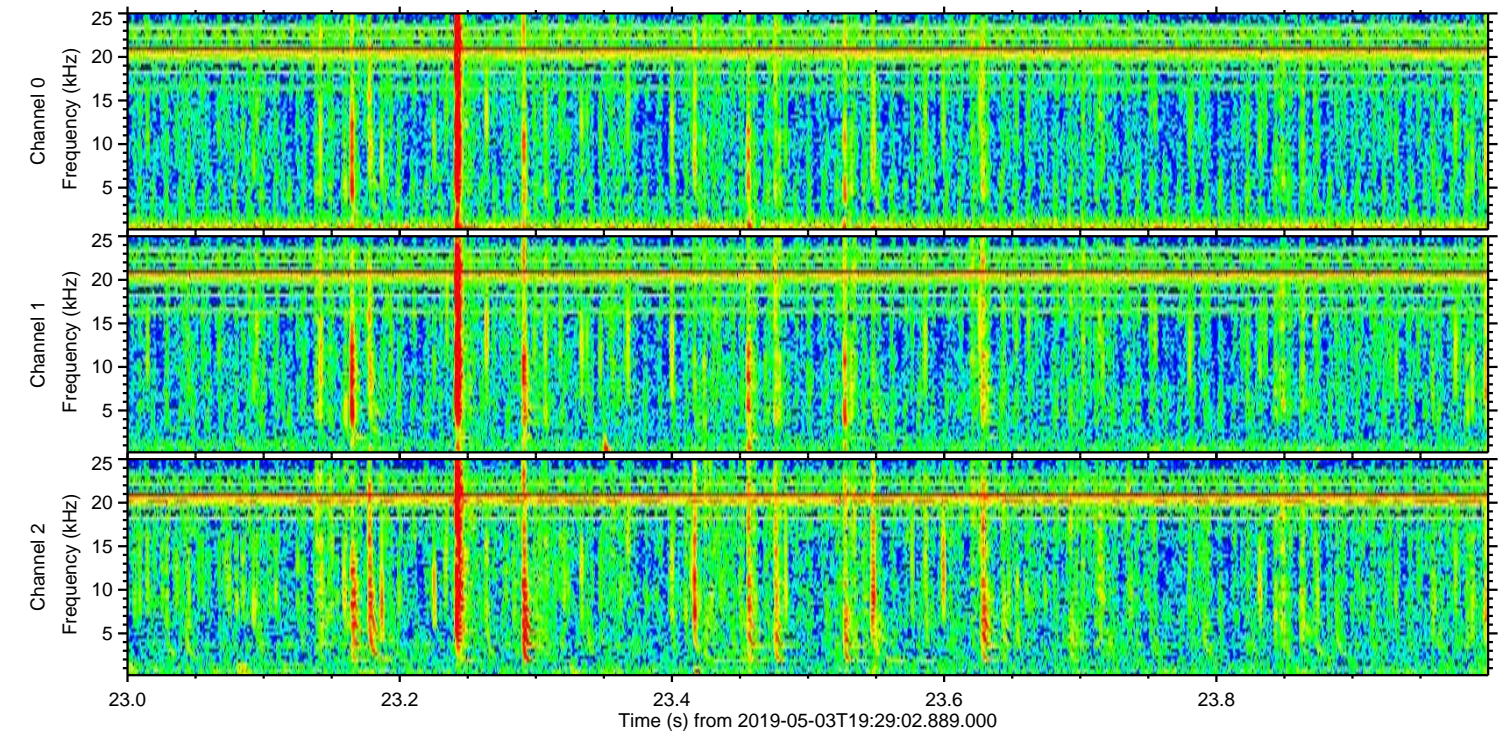
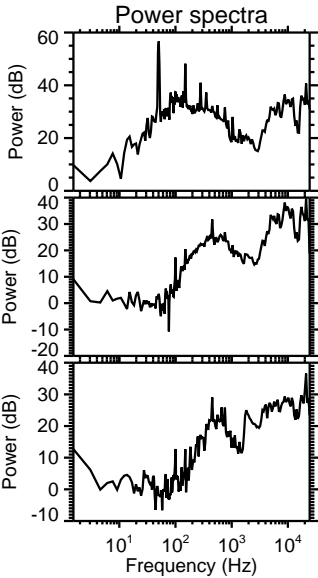
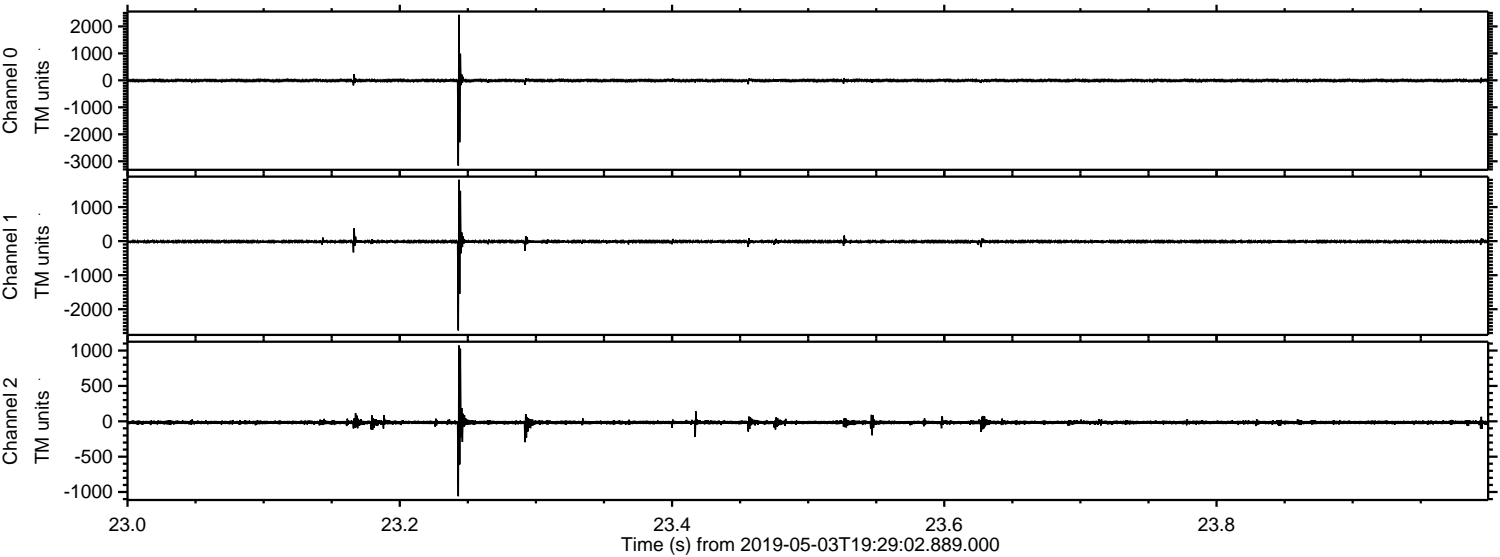


ELMAVAN 3D WAVEFORMS (Measured data sampled at 50 kHz) 50999 packets of 144 samples from 2019-05-03T19:29:02.889.000.

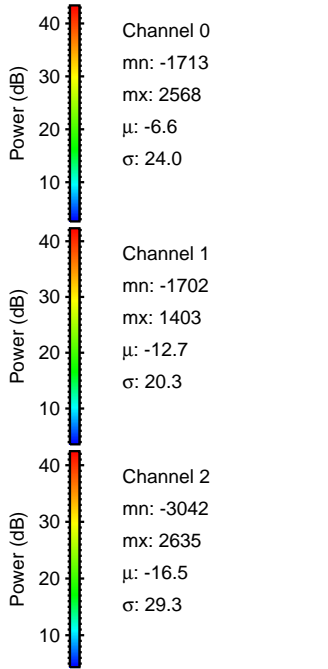
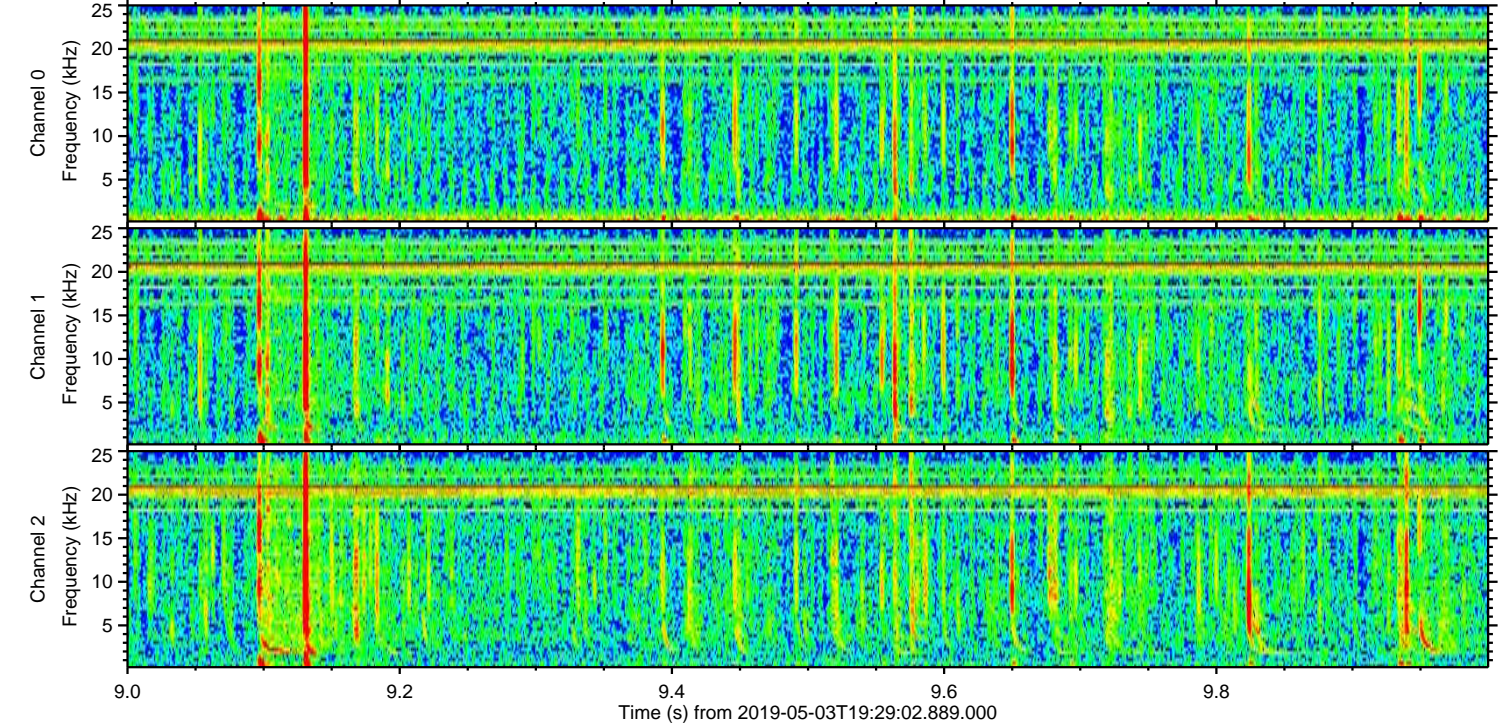
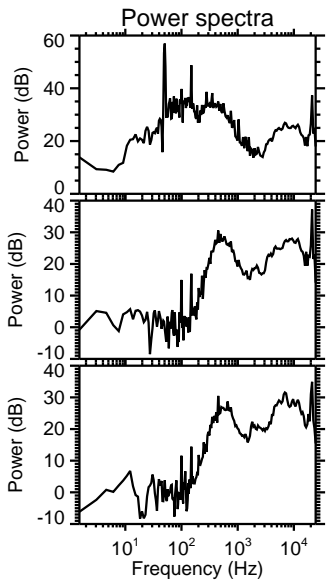
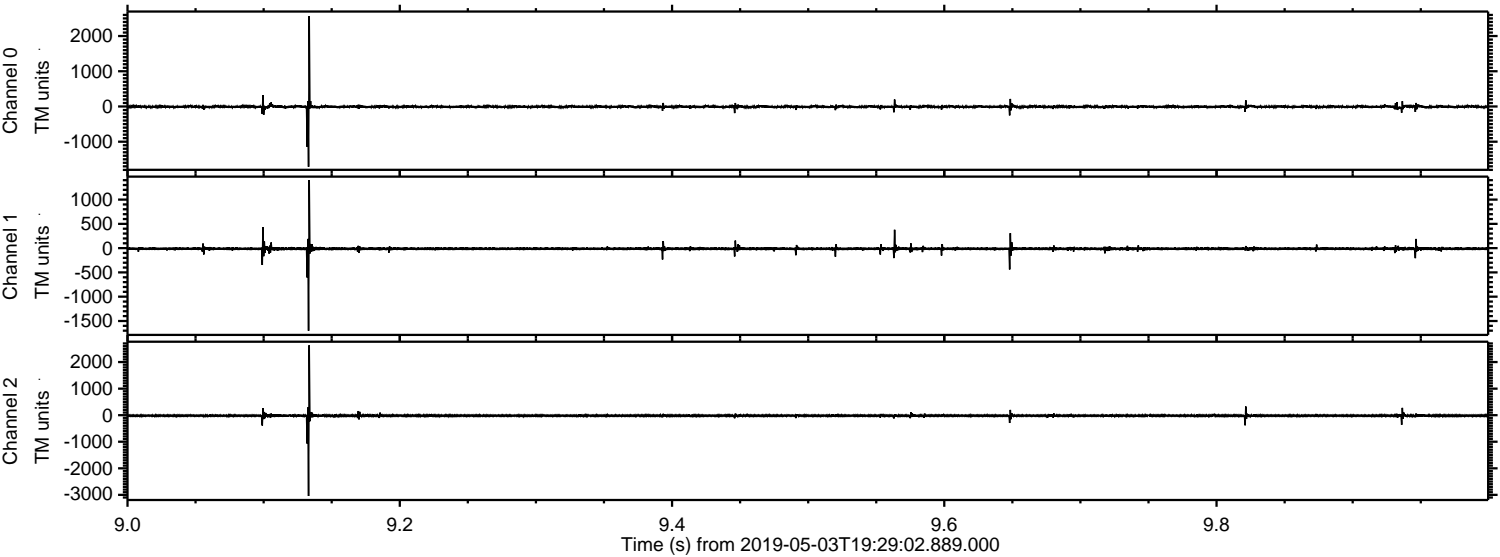
Processed Fri May 3 21:36:40 2019 by ELM ver.2012-10-06 from 001__elm20190503_192901__dat00.bin



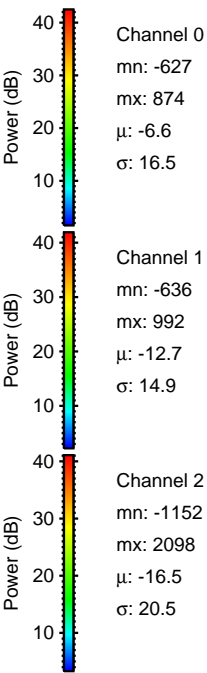
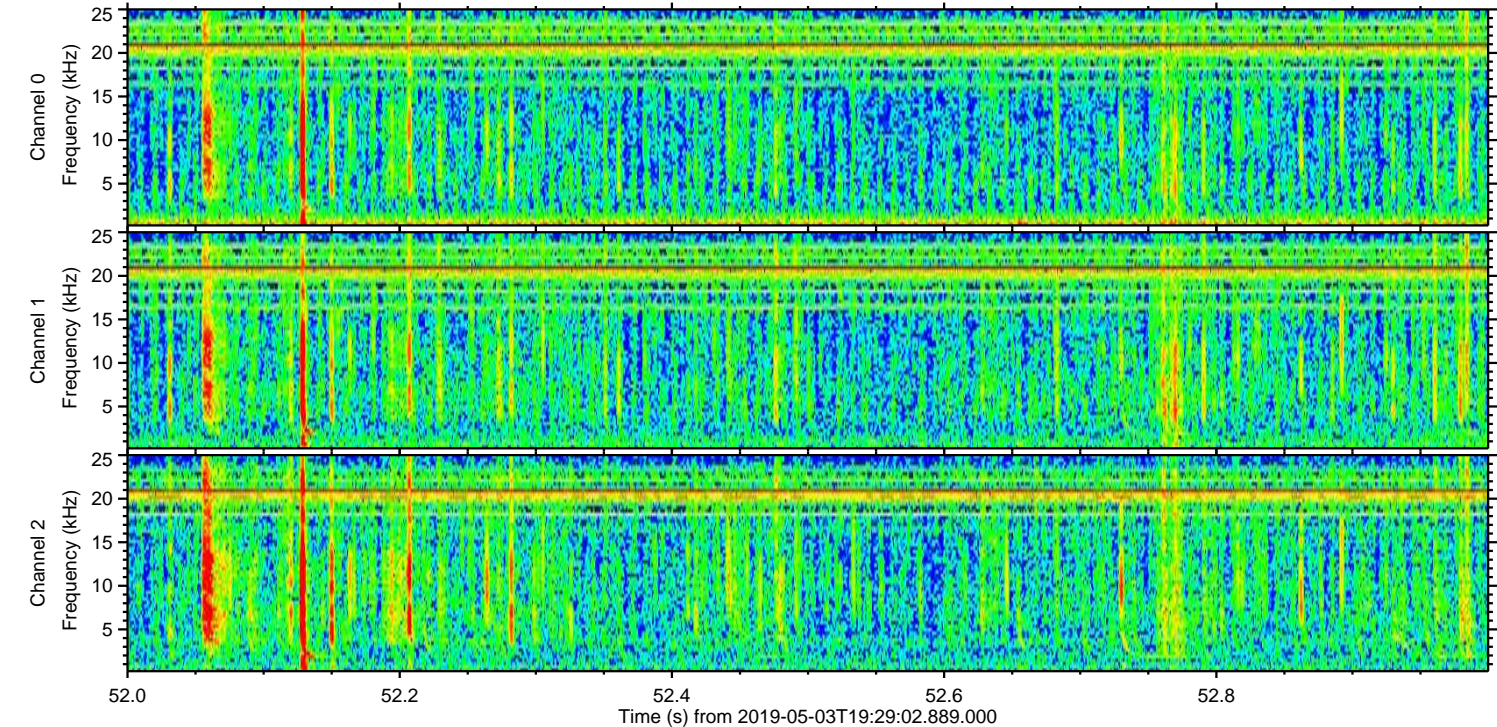
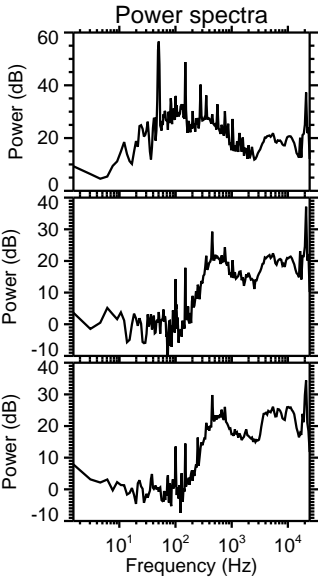
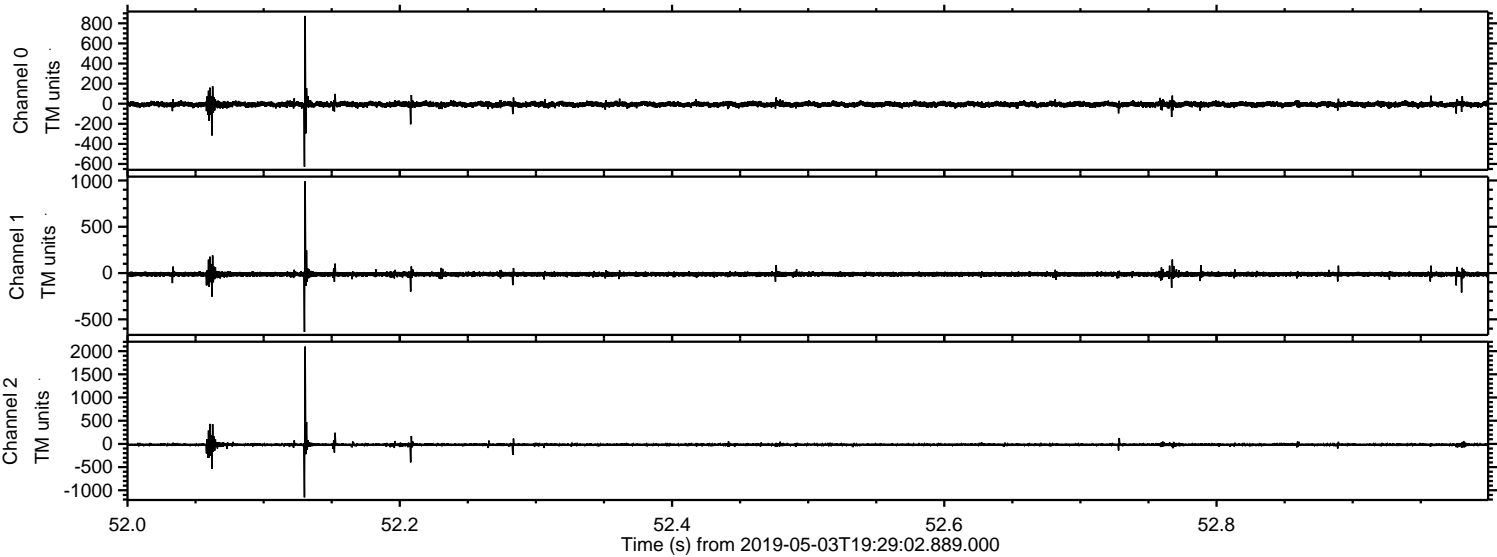
Processed Fri May 3 21:36:47 2019 by ELM ver.2012-10-06 from 001__elm20190503_192901__dat00.bin



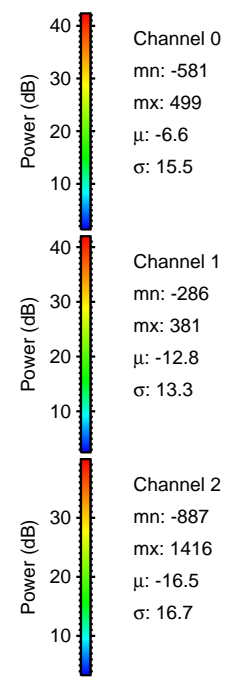
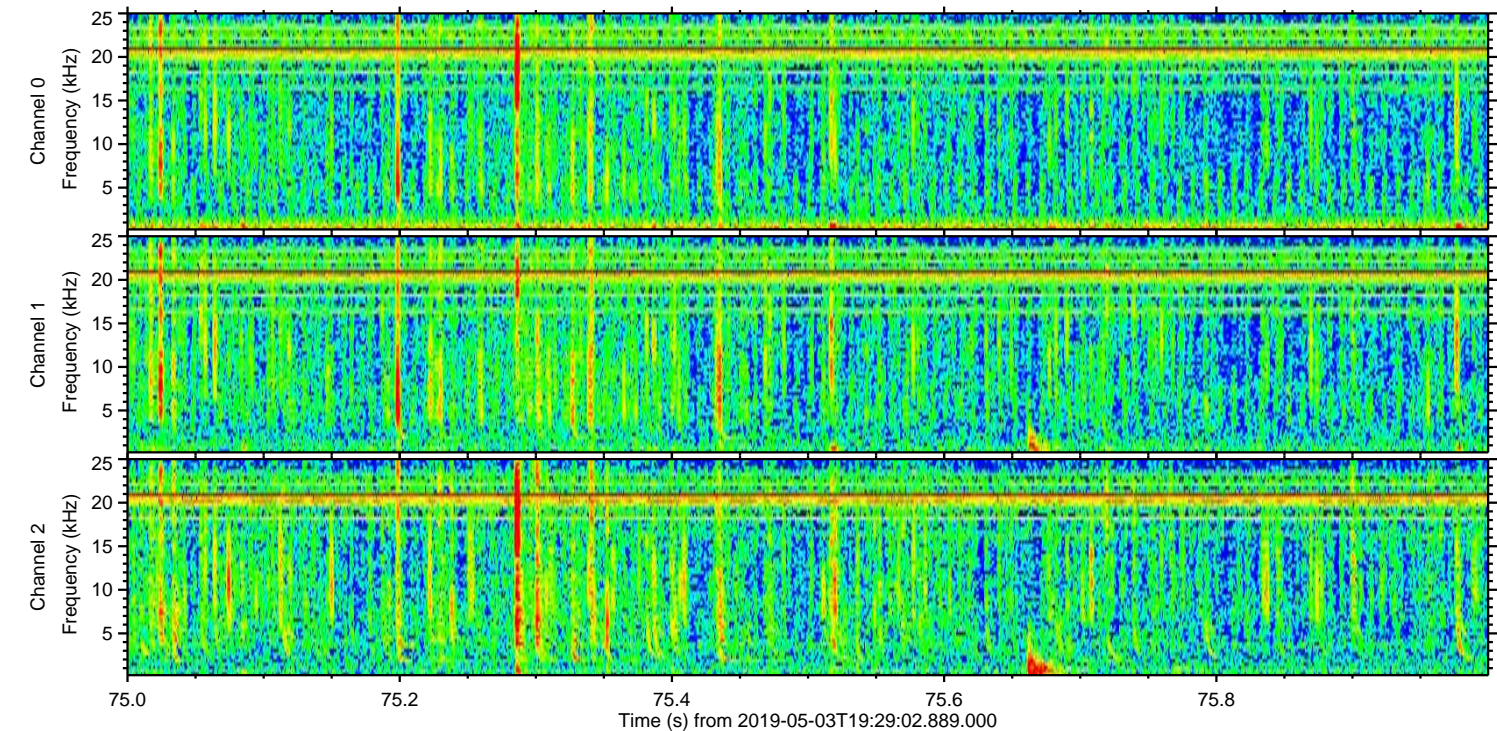
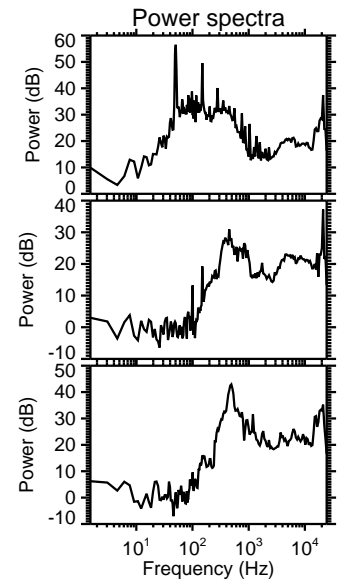
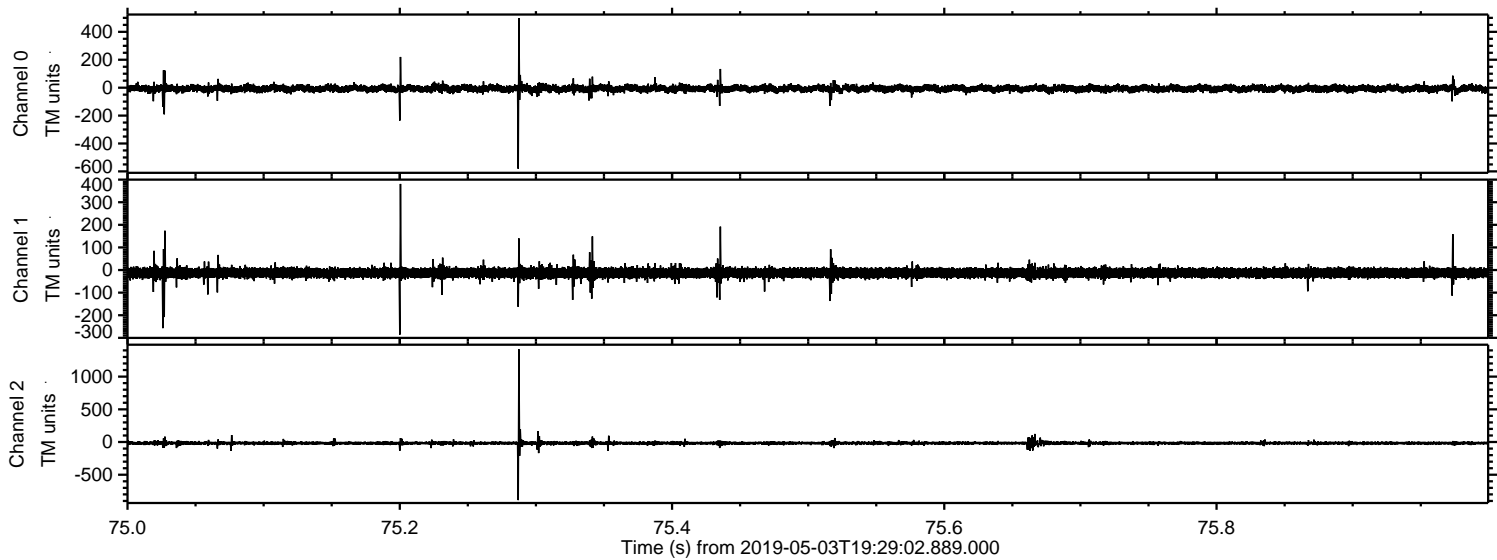
Processed Fri May 3 21:36:47 2019 by ELM ver.2012-10-06 from 001__elm20190503_192901__dat00.bin



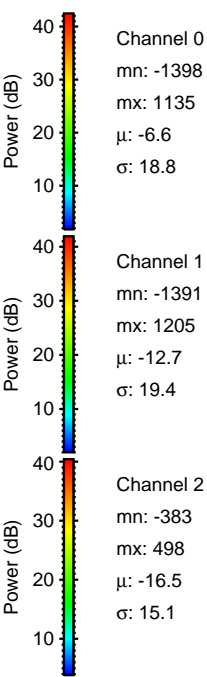
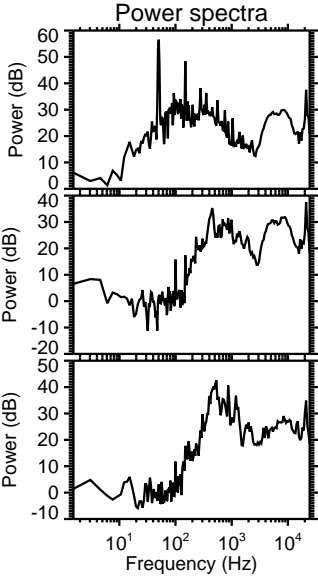
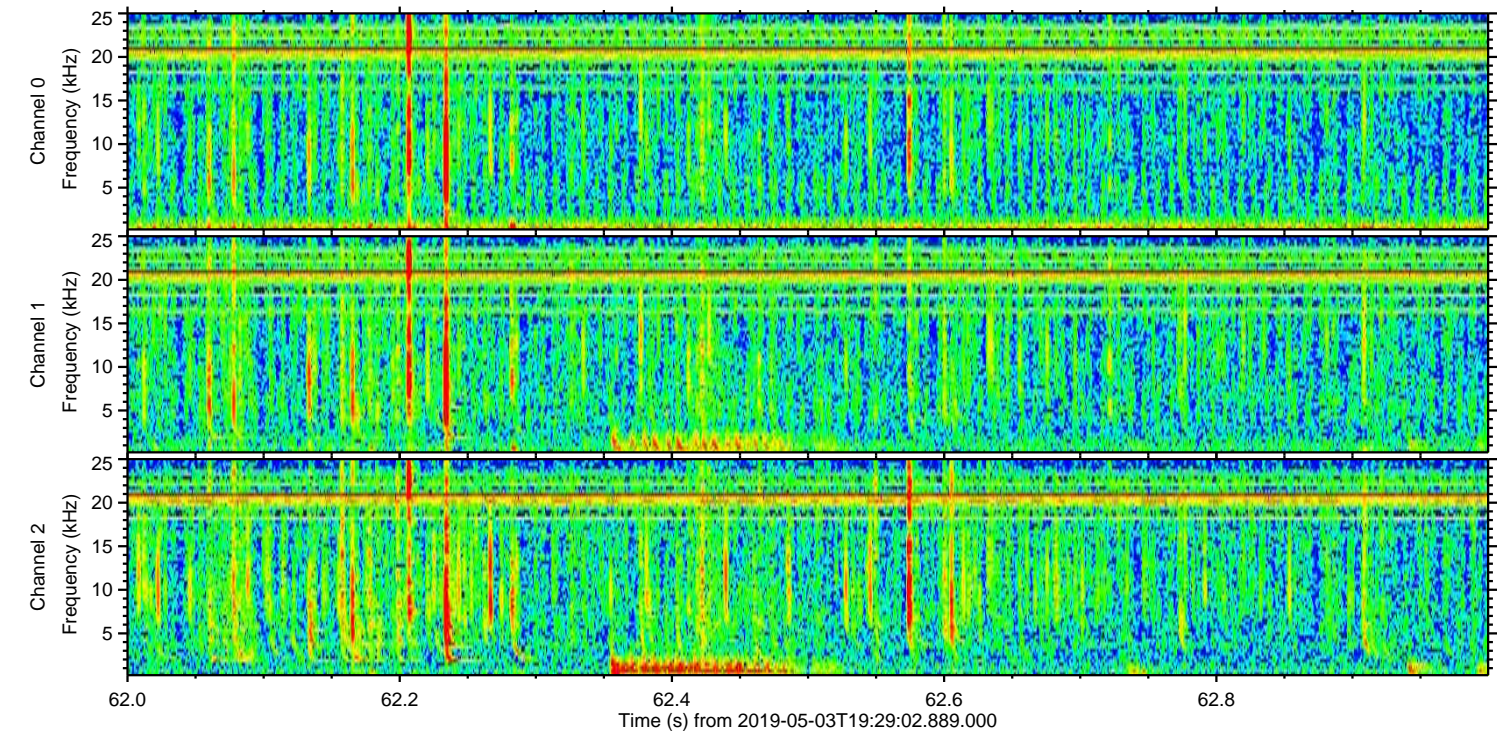
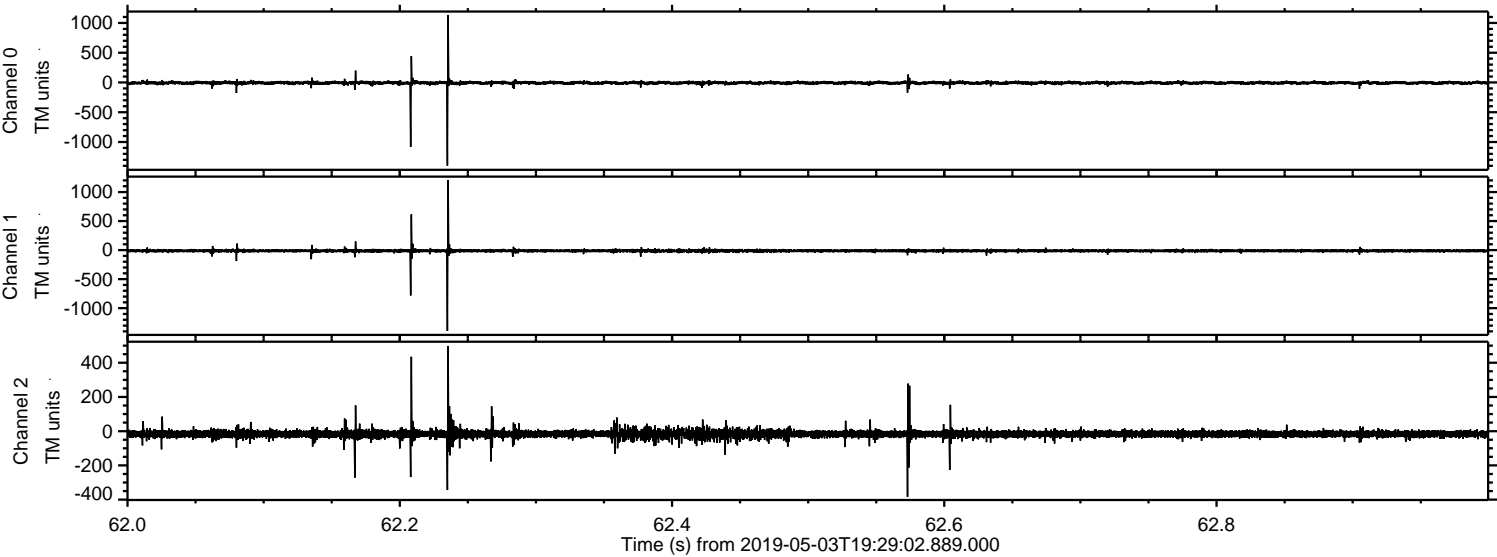
Processed Fri May 3 21:36:48 2019 by ELM ver.2012-10-06 from 001__elm20190503_192901__dat00.bin



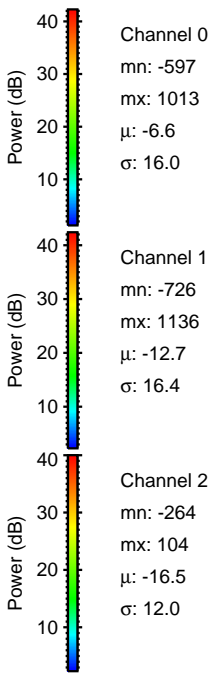
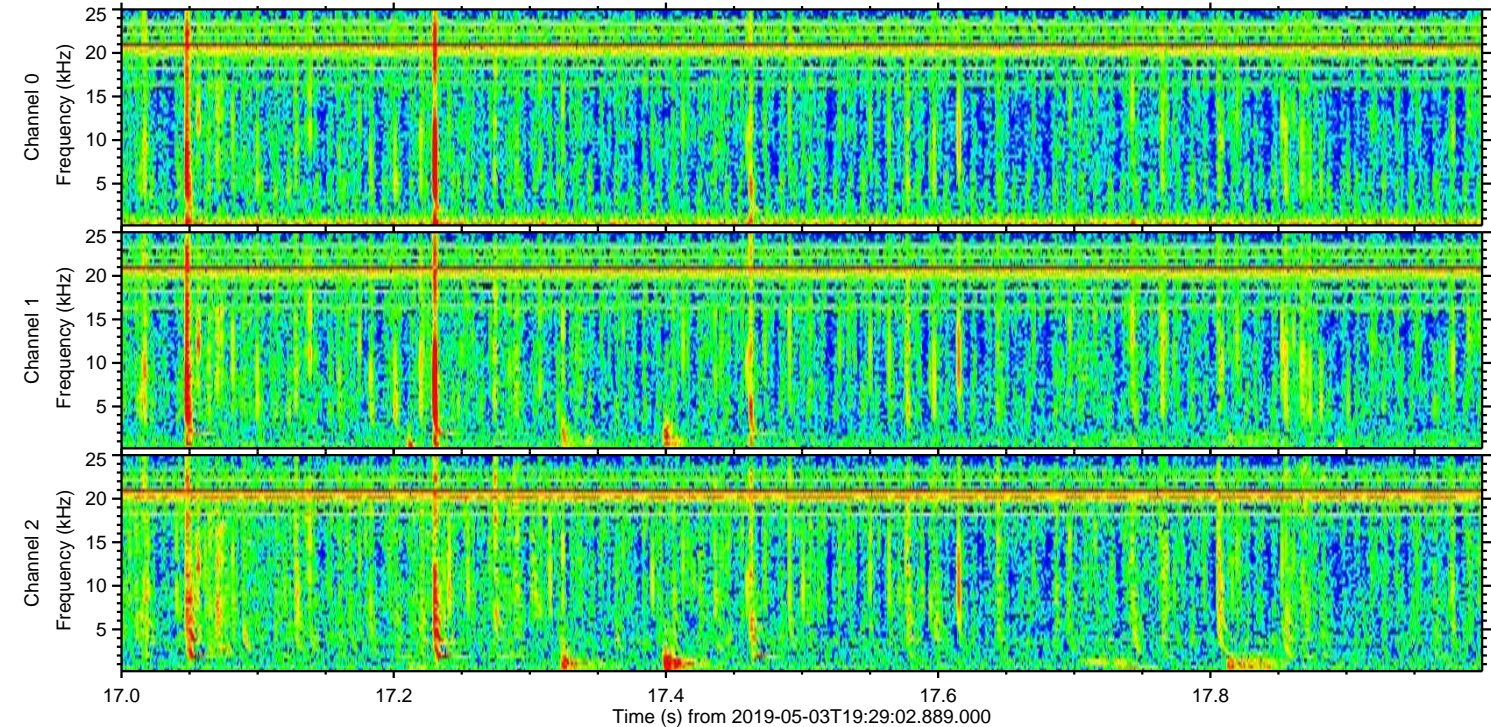
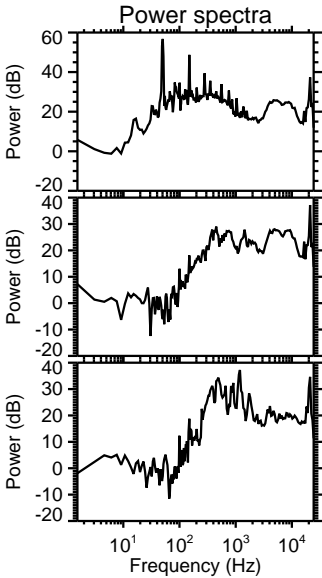
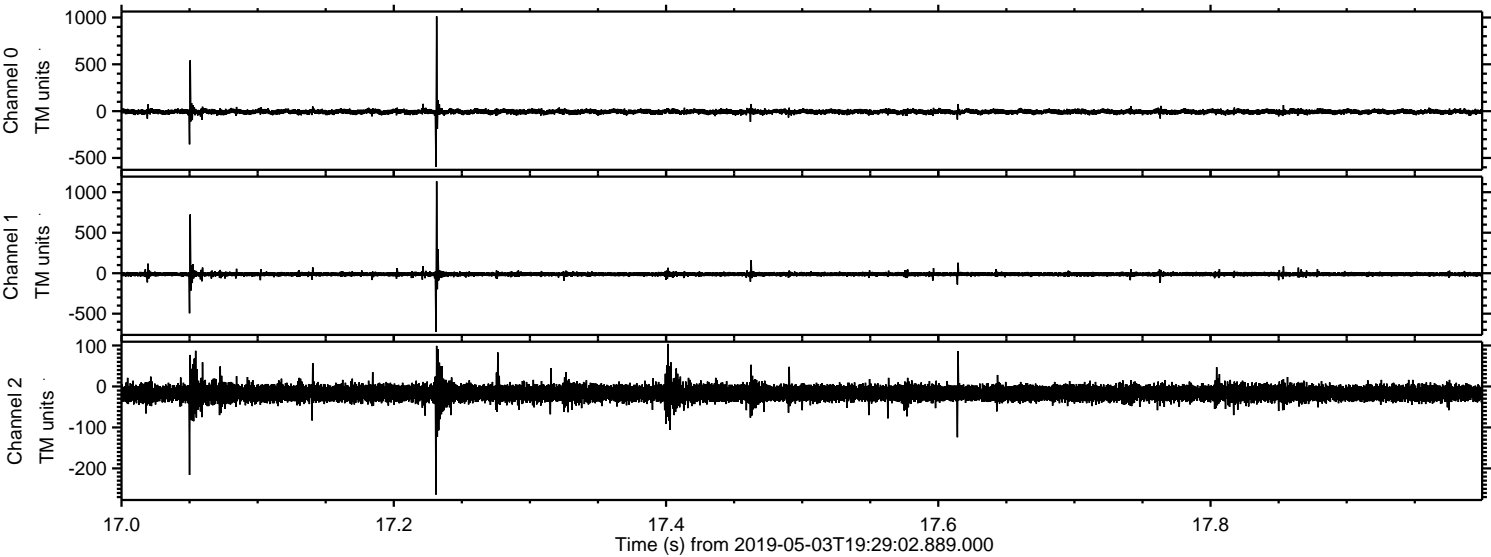
Processed Fri May 3 21:36:49 2019 by ELM ver.2012-10-06 from 001__elm20190503_192901__dat00.bin



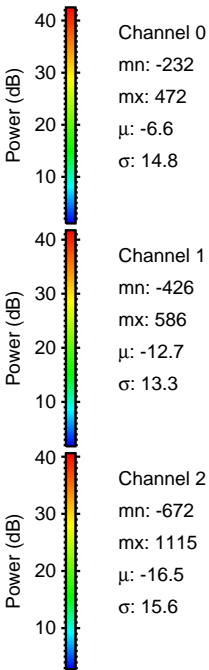
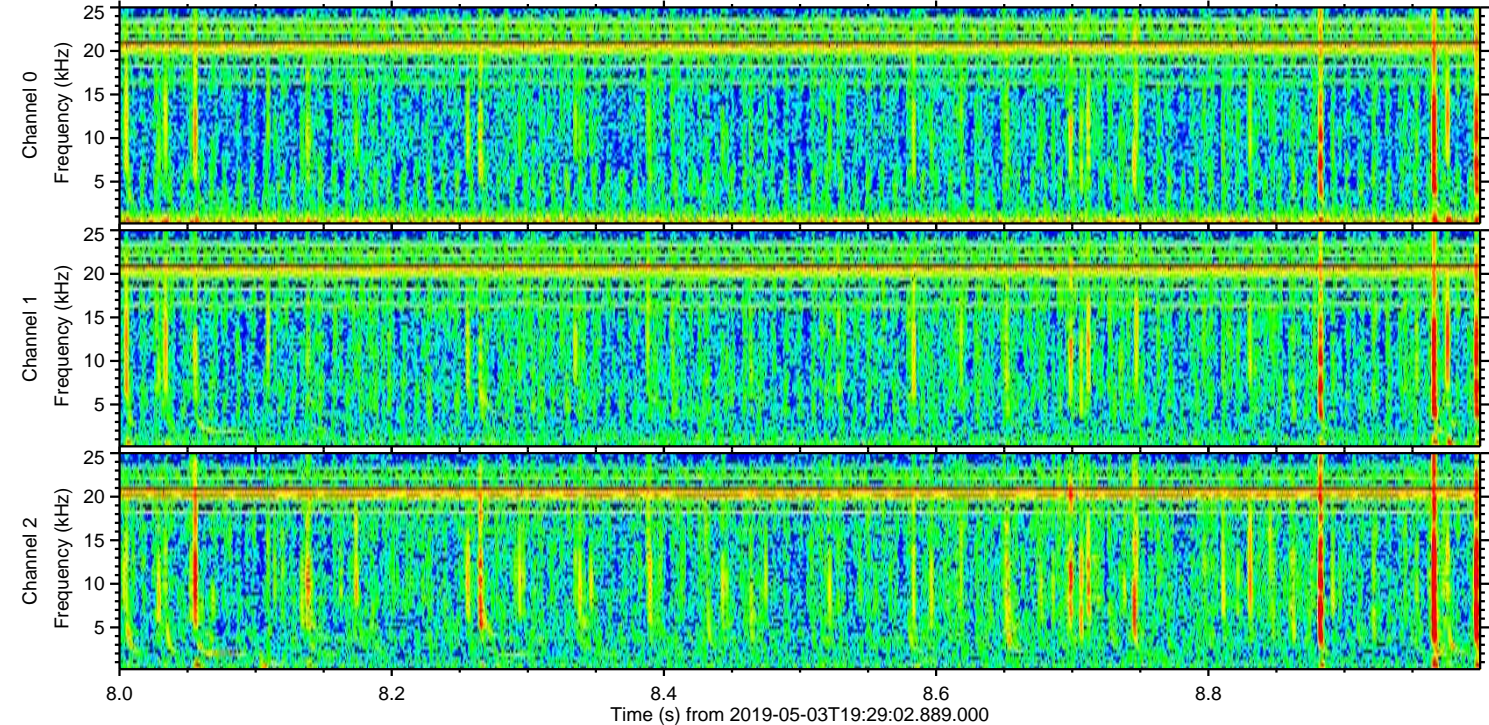
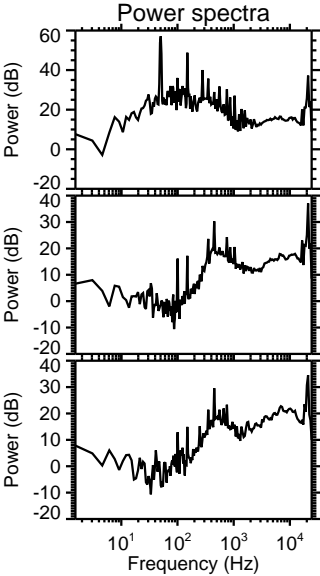
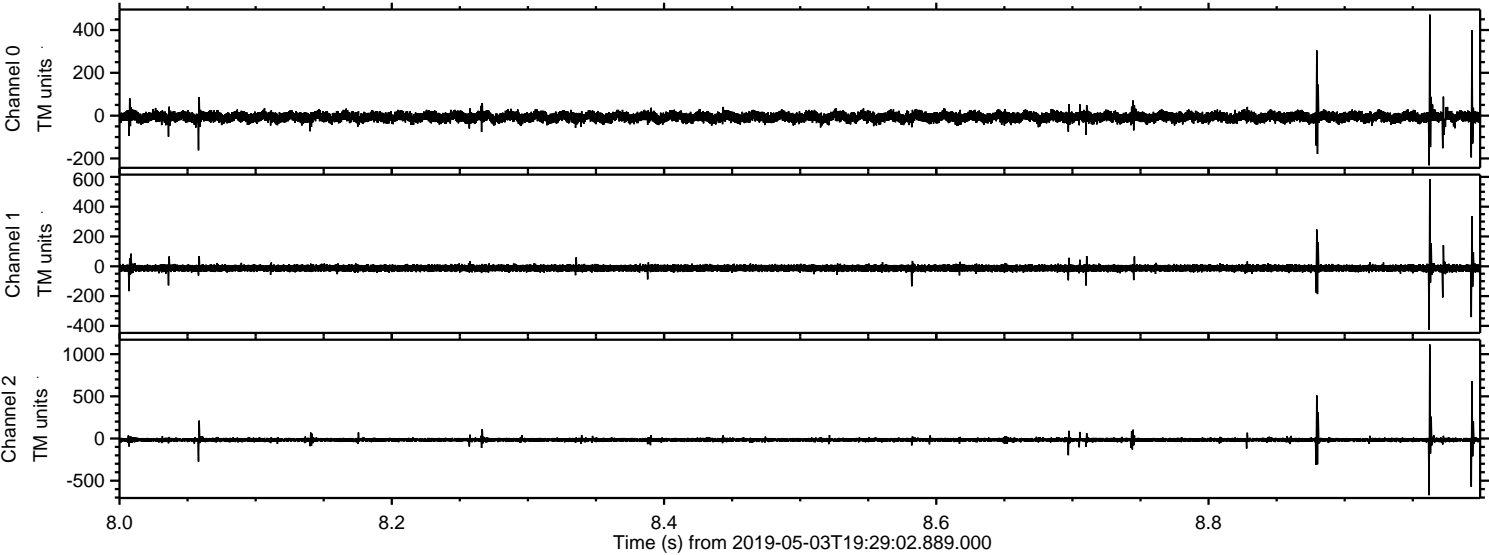
Processed Fri May 3 21:36:49 2019 by ELM ver.2012-10-06 from 001__elm20190503_192901__dat00.bin



Processed Fri May 3 21:36:50 2019 by ELM ver.2012-10-06 from 001__elm20190503_192901__dat00.bin

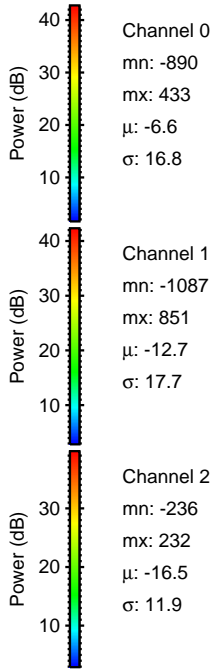
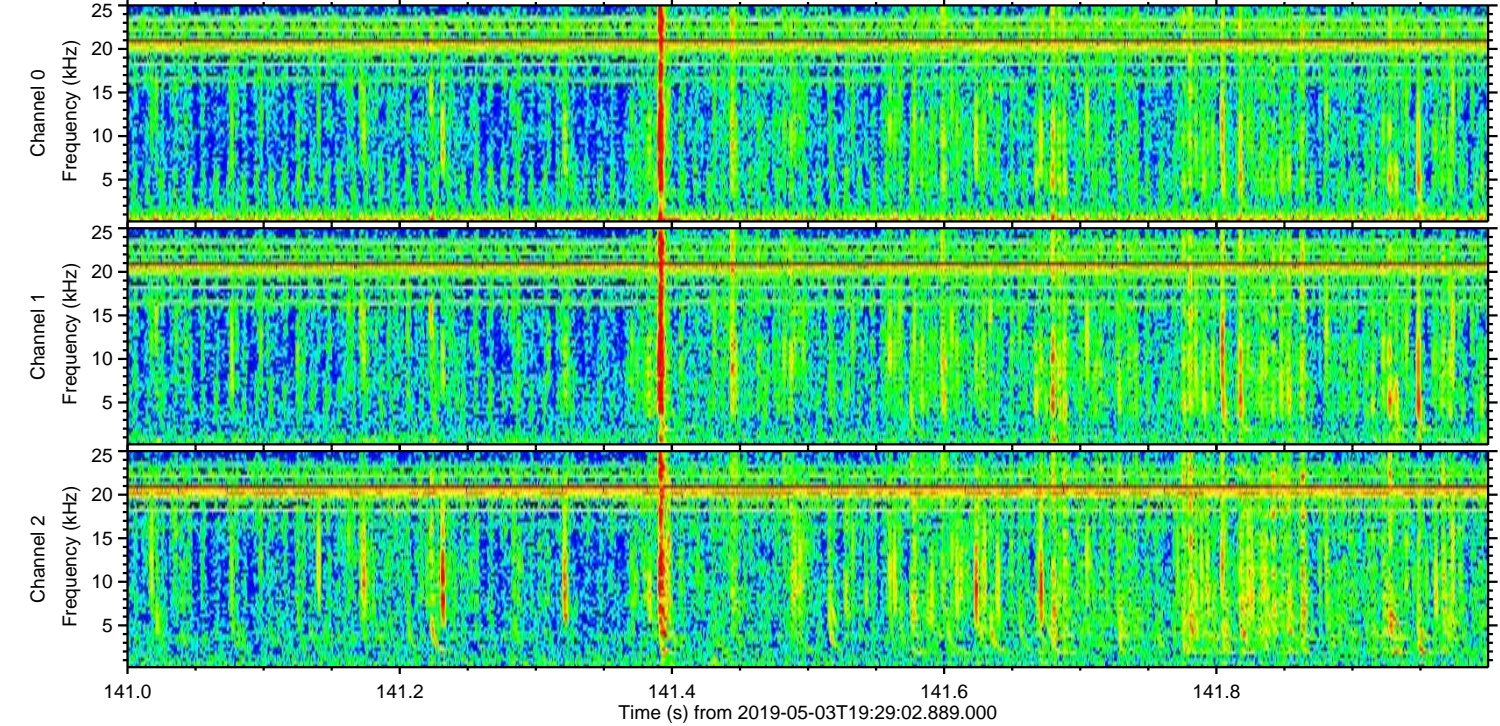
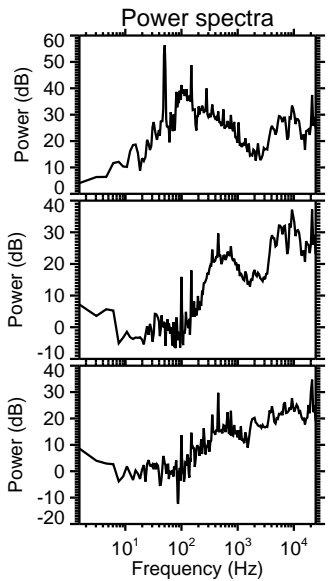
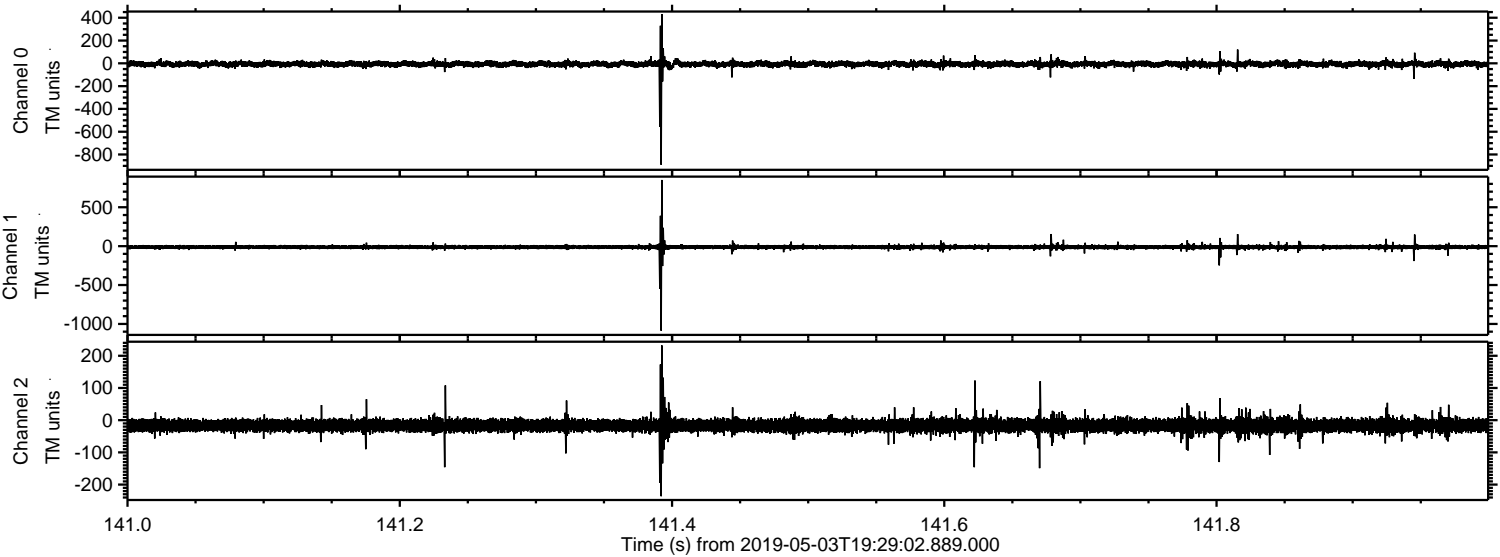


Processed Fri May 3 21:36:51 2019 by ELM ver.2012-10-06 from 001__elm20190503_192901__dat00.bin



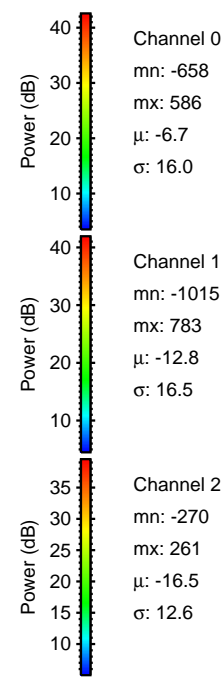
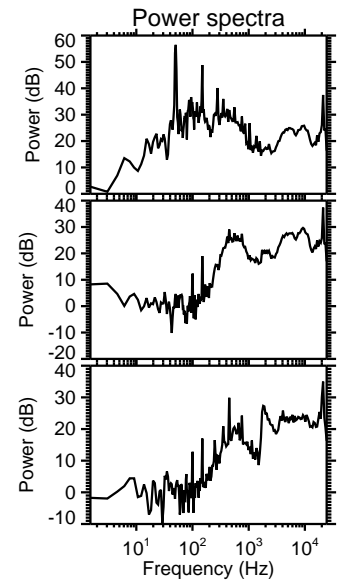
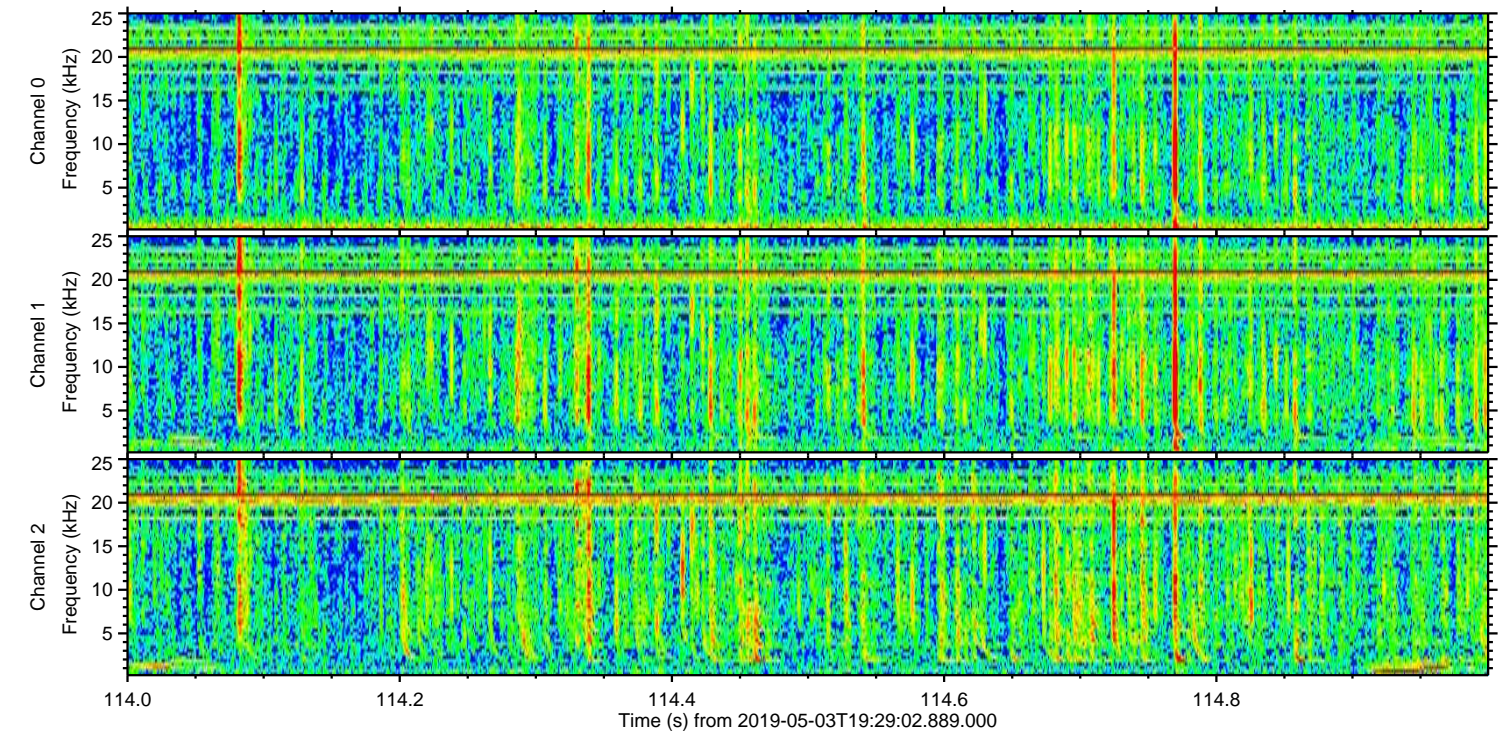
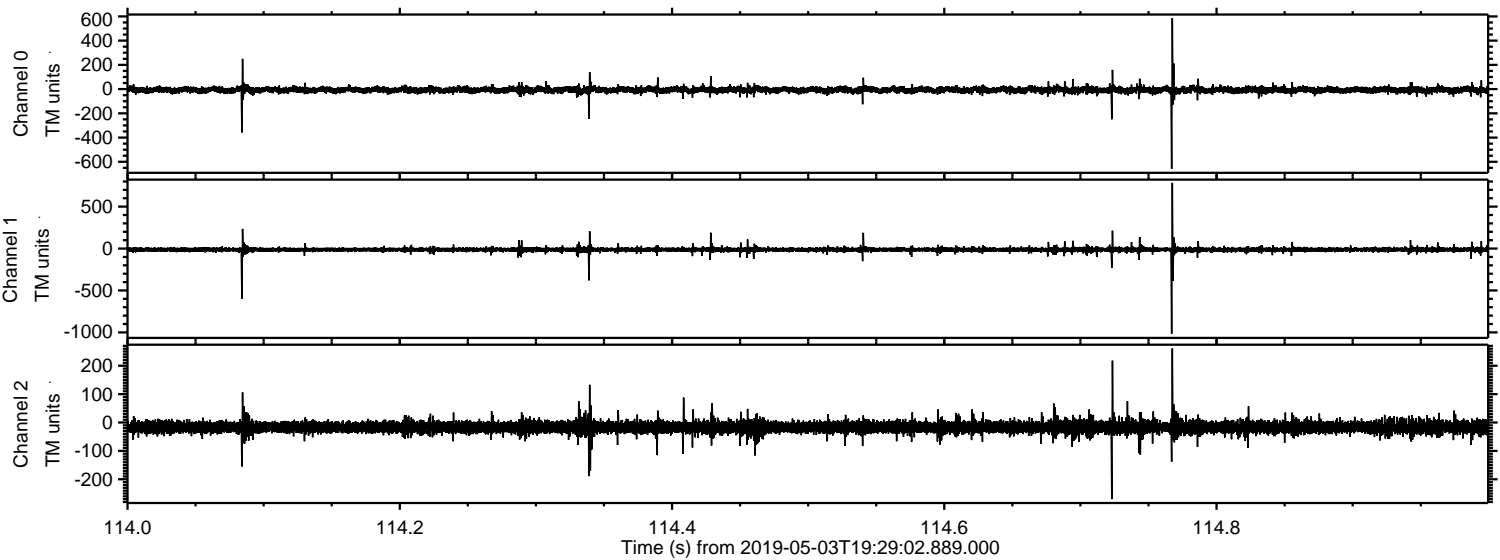
ELMAVAN 3D WAVEFORMS (Measured data sampled at 50 kHz) 50999 packets of 144 samples from 2019-05-03T19:29:02.889.000. Part 142/147

Processed Fri May 3 21:36:51 2019 by ELM ver.2012-10-06 from 001__elm20190503_192901__dat00.bin



ELMAVAN 3D WAVEFORMS (Measured data sampled at 50 kHz) 50999 packets of 144 samples from 2019-05-03T19:29:02.889.000. Part 115/147

Processed Fri May 3 21:36:52 2019 by ELM ver.2012-10-06 from 001__elm20190503_192901__dat00.bin



Channel 0
mn: -658
mx: 586
 μ : -6.7
 σ : 16.0

Channel 1
mn: -1015
mx: 783
 μ : -12.8
 σ : 16.5

Channel 2
mn: -270
mx: 261
 μ : -16.5
 σ : 12.6

Processed Fri May 3 21:36:53 2019 by ELM ver.2012-10-06 from 001__elm20190503_192901__dat00.bin

