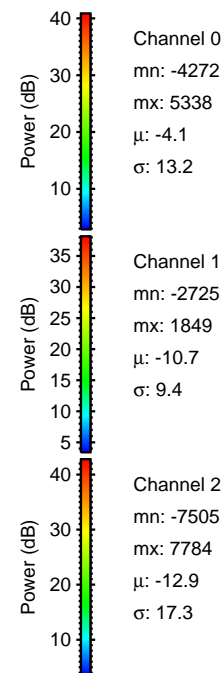
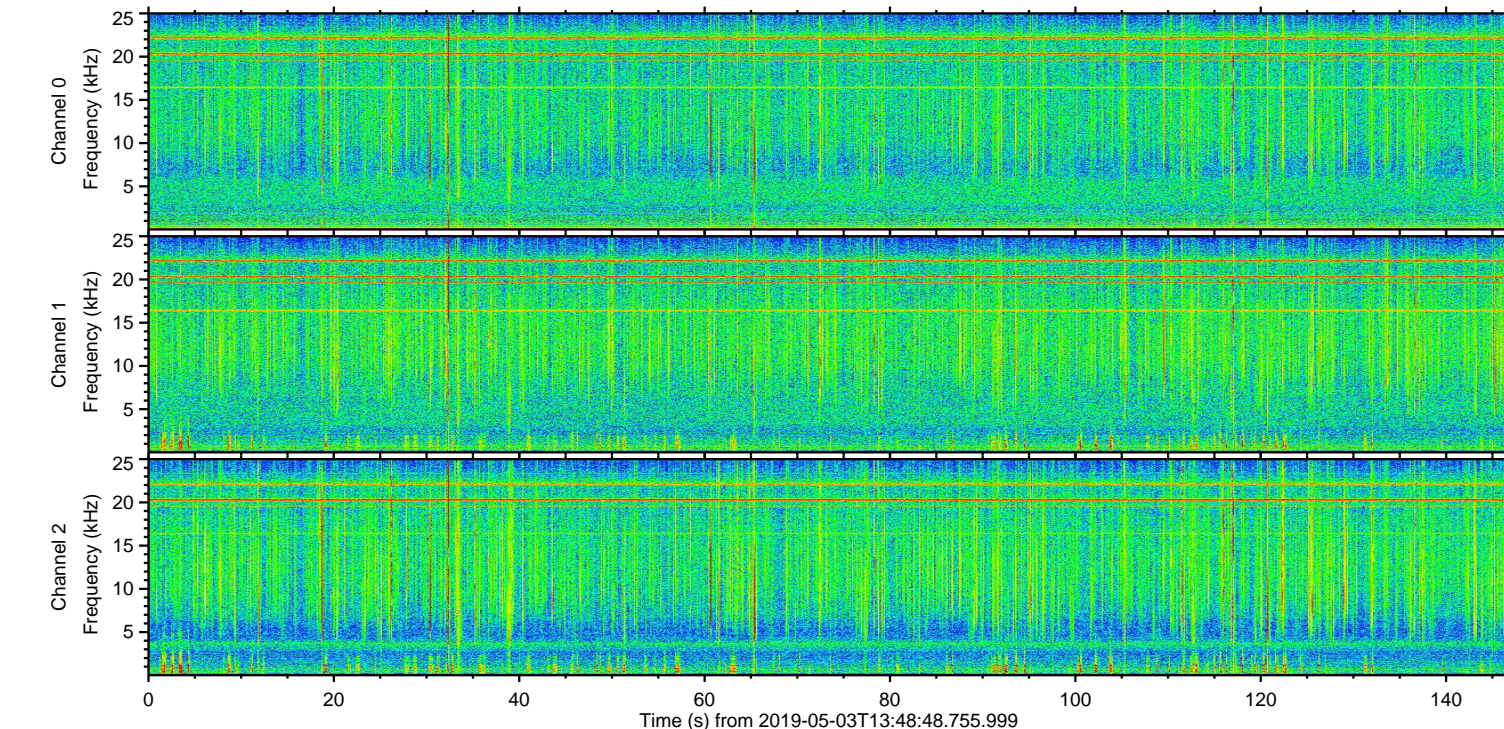
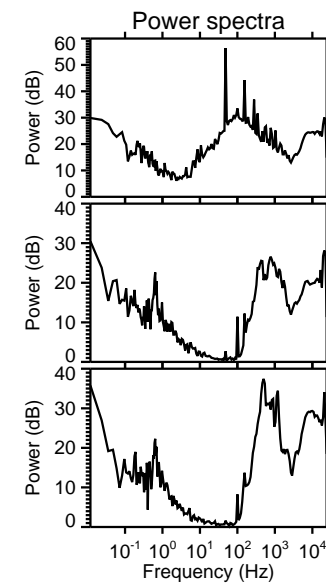
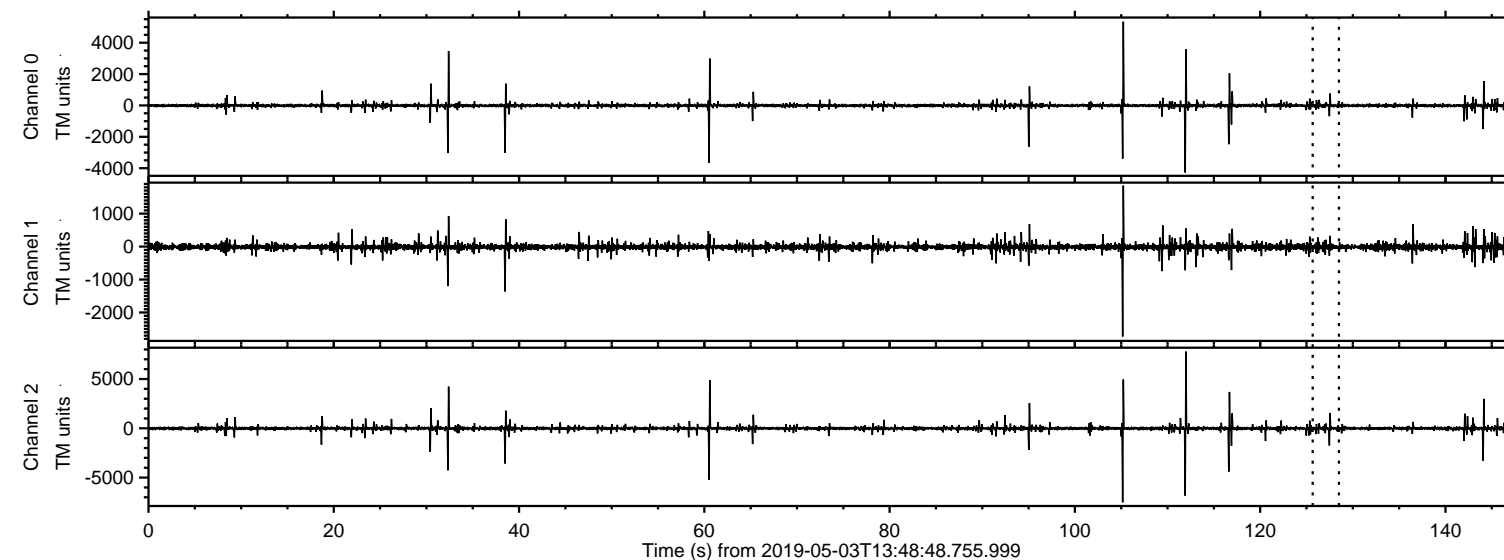


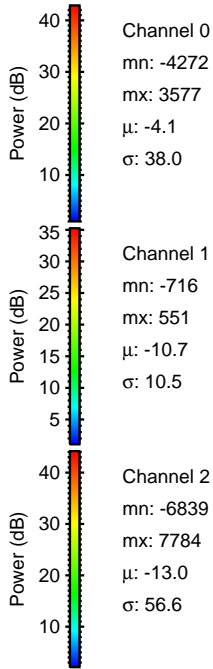
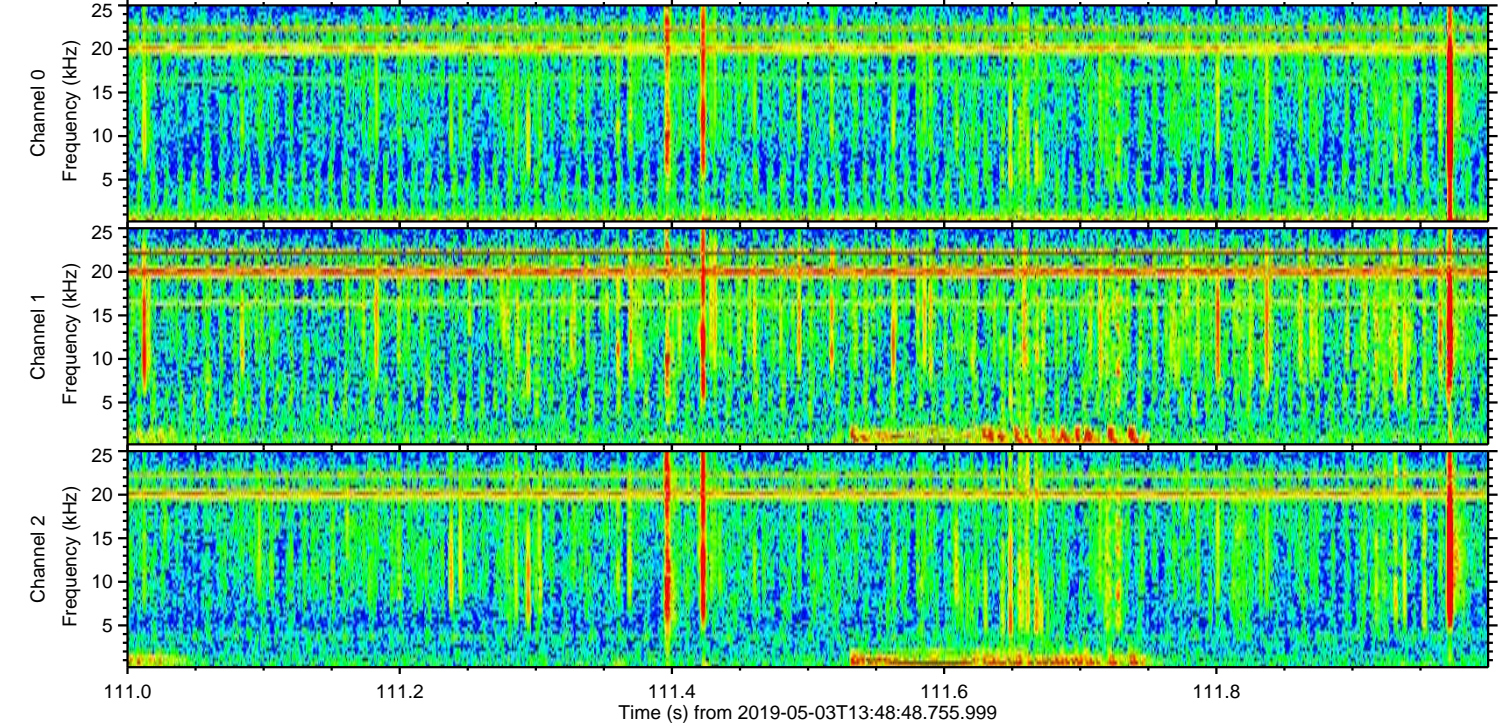
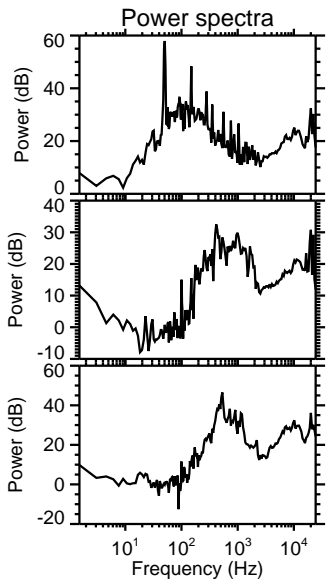
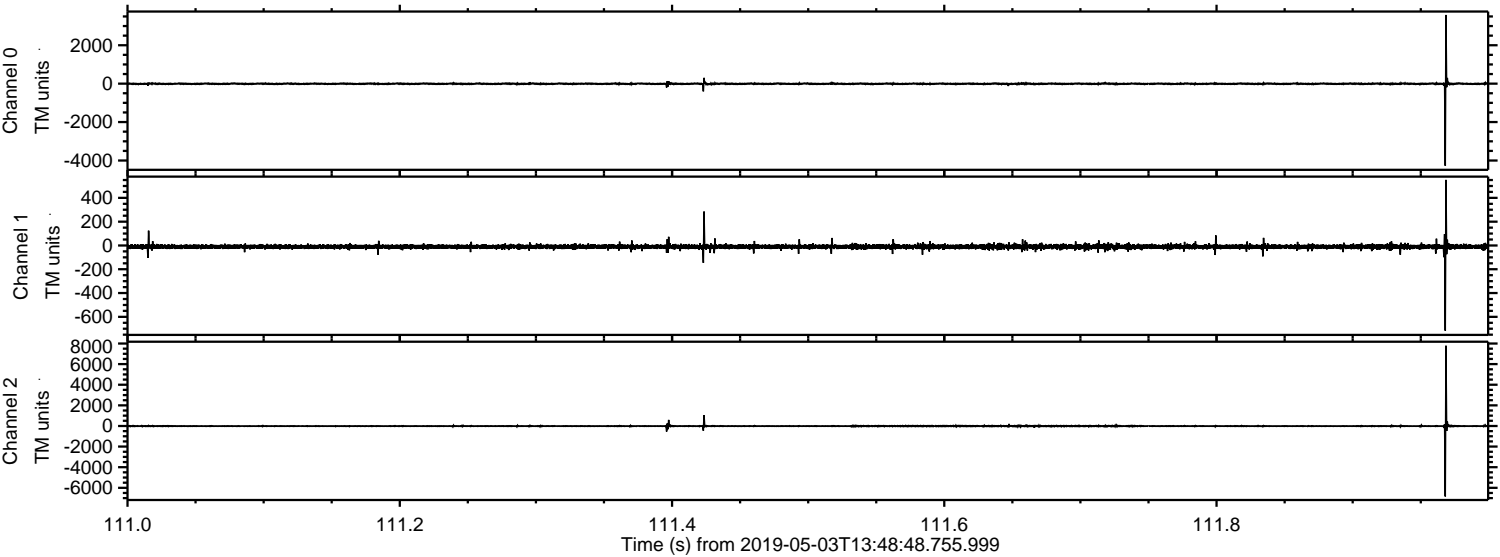
ELMAVAN 3D WAVEFORMS (Measured data sampled at 50 kHz) 50998 packets of 144 samples from 2019-05-03T13:48:48.755.999.

Processed Fri May 3 15:56:31 2019 by ELM ver.2012-10-06 from 001__elm20190503_134847__dat00.bin



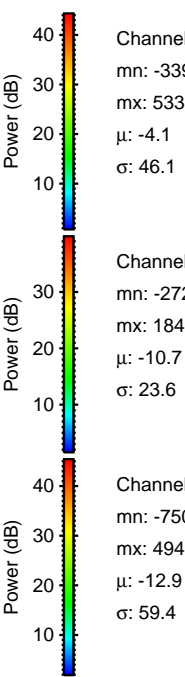
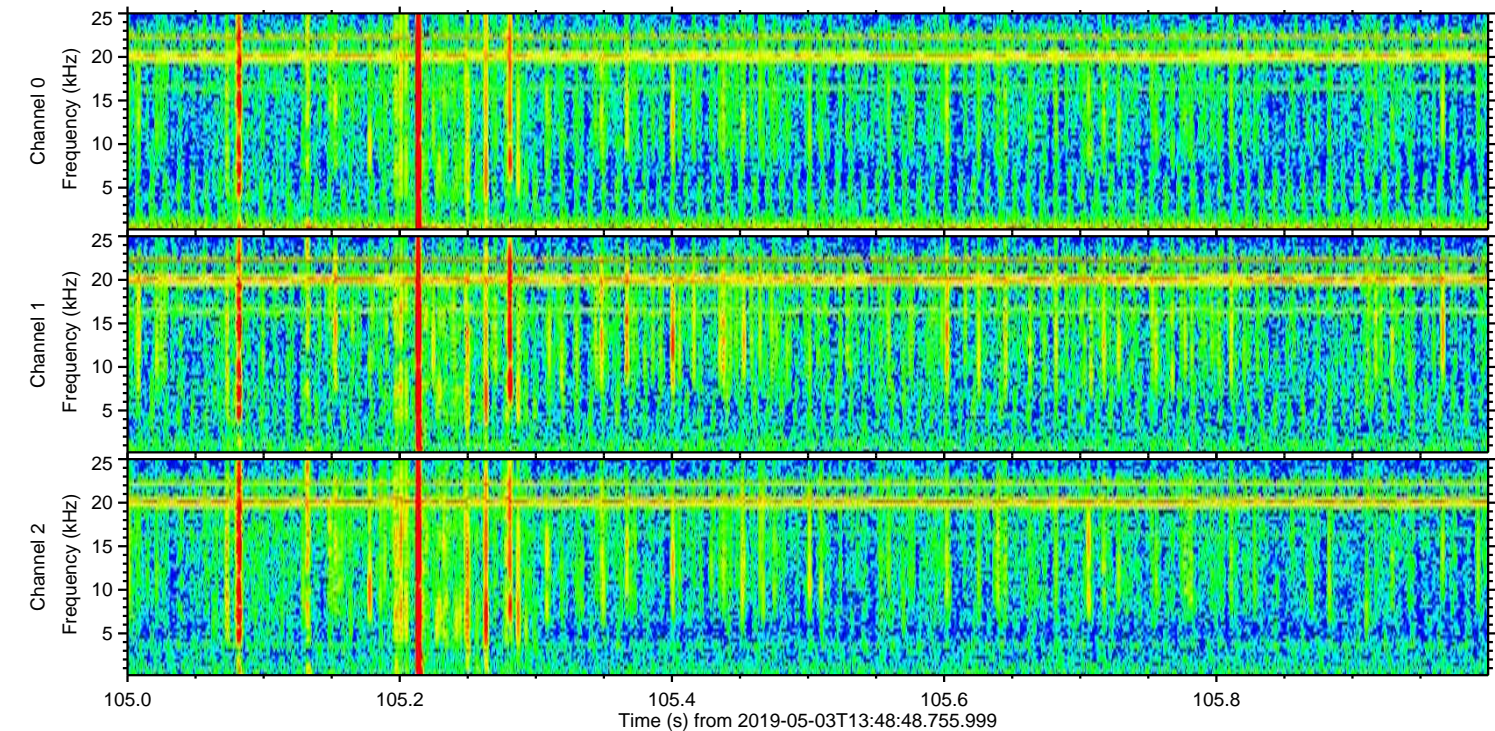
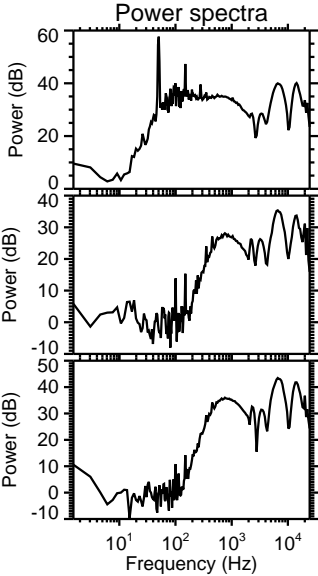
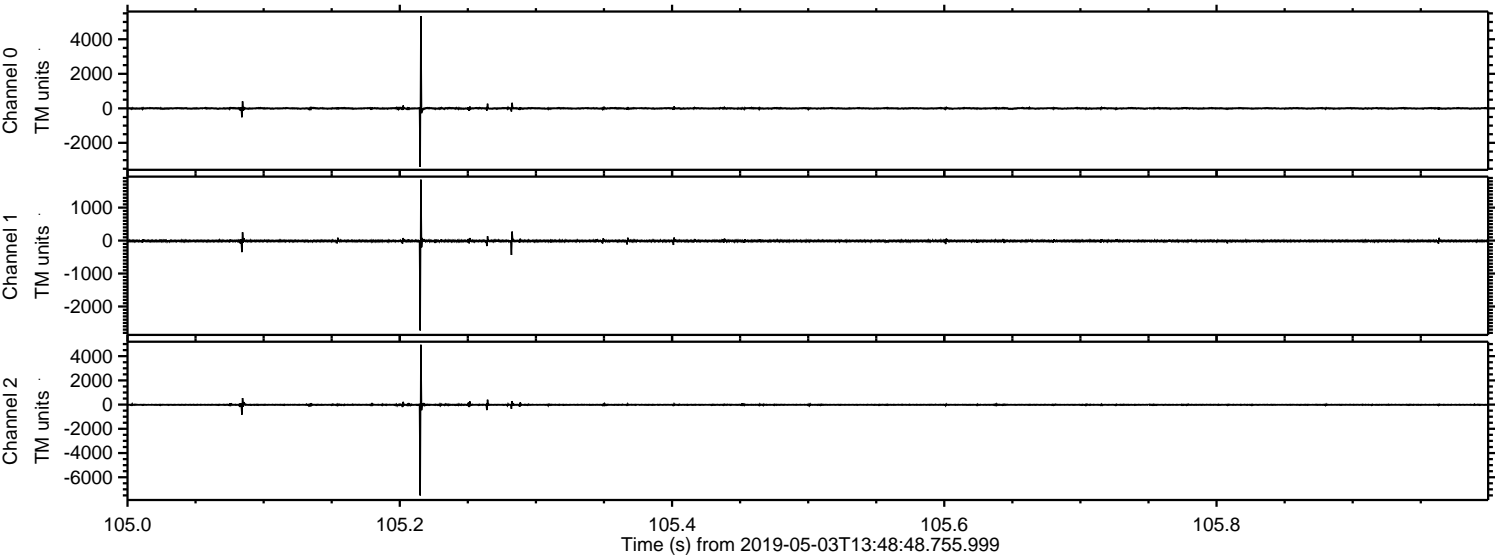
ELMAVAN 3D WAVEFORMS (Measured data sampled at 50 kHz) 50998 packets of 144 samples from 2019-05-03T13:48:48.755.999. Part 112/147

Processed Fri May 3 15:56:37 2019 by ELM ver.2012-10-06 from 001__elm20190503_134847__dat00.bin

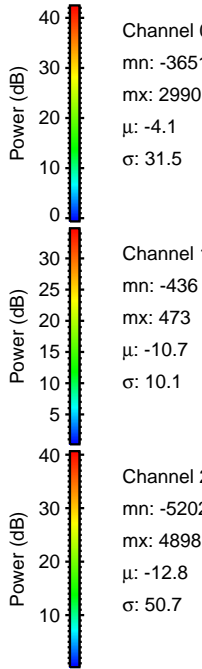
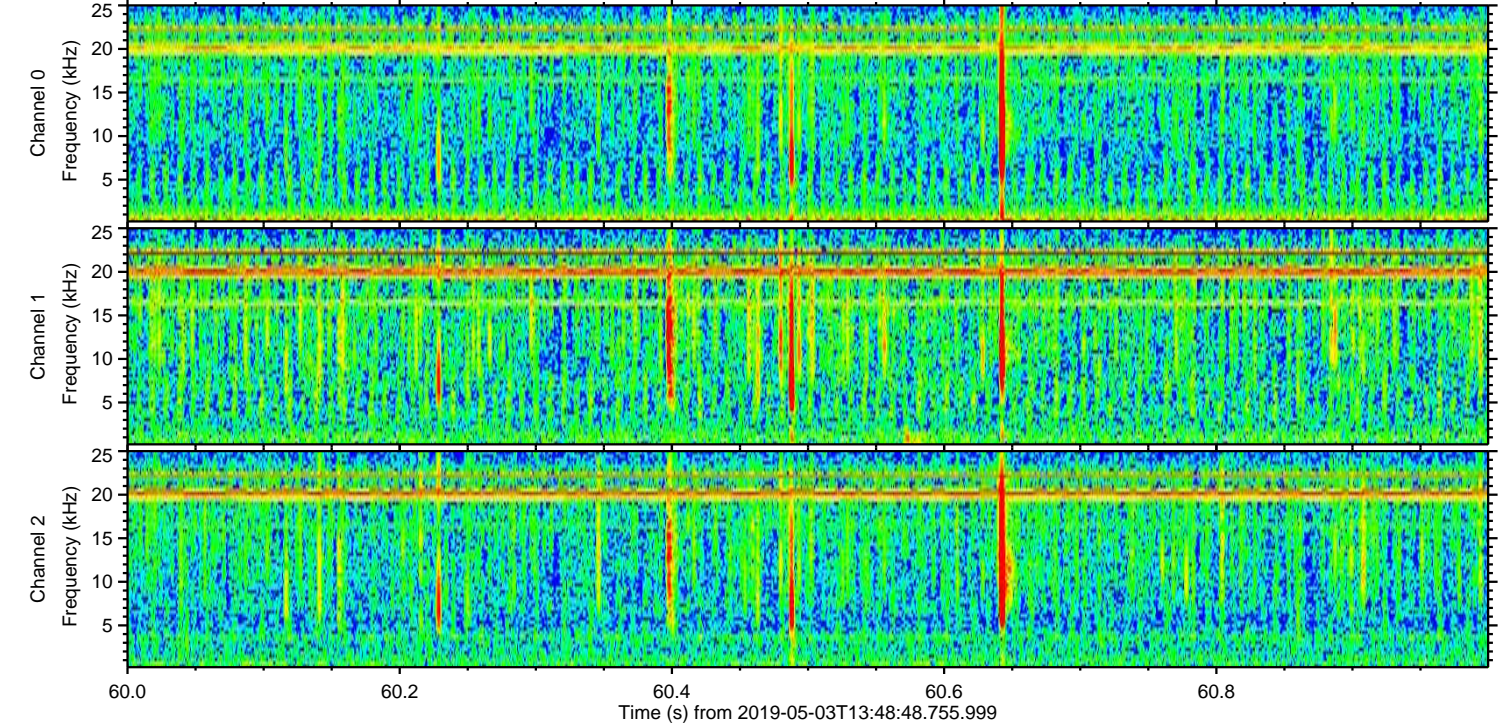
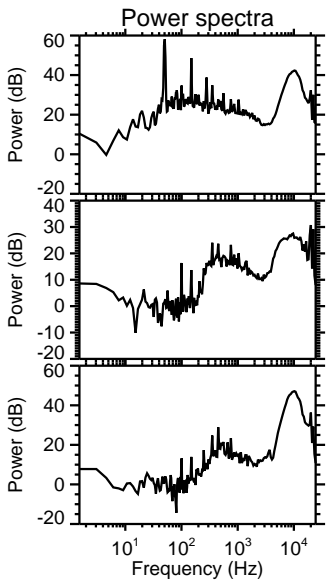
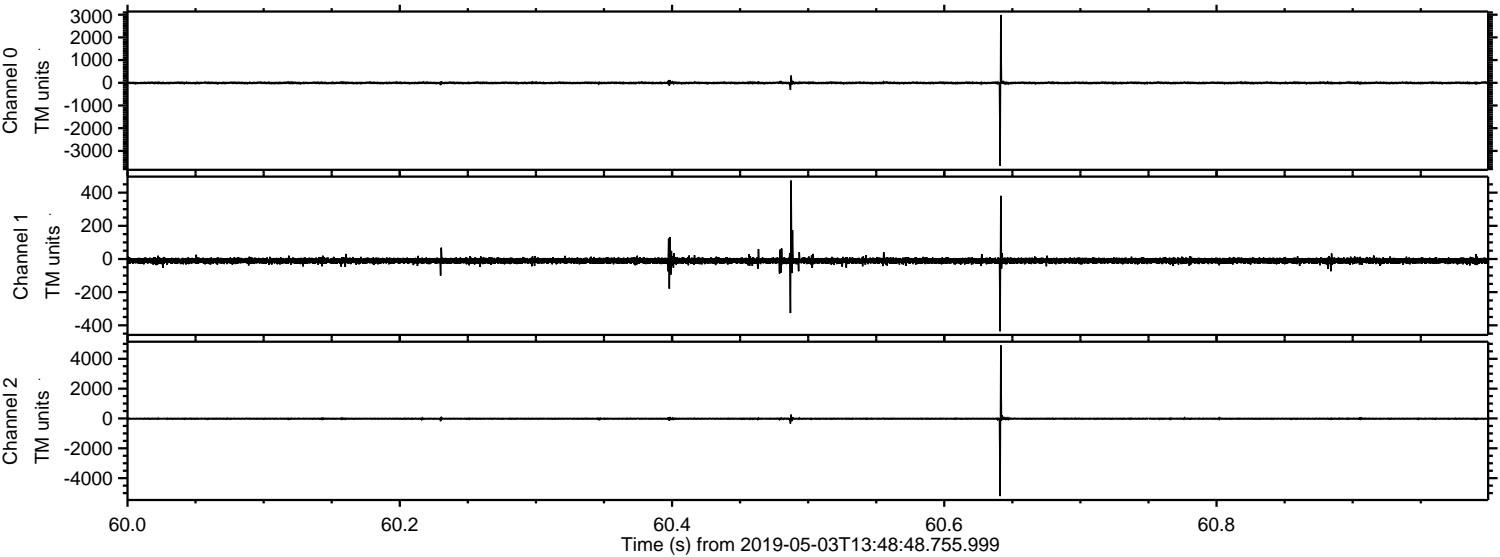


ELMAVAN 3D WAVEFORMS (Measured data sampled at 50 kHz) 50998 packets of 144 samples from 2019-05-03T13:48:48.755.999. Part 106/147

Processed Fri May 3 15:56:38 2019 by ELM ver.2012-10-06 from 001__elm20190503_134847__dat00.bin

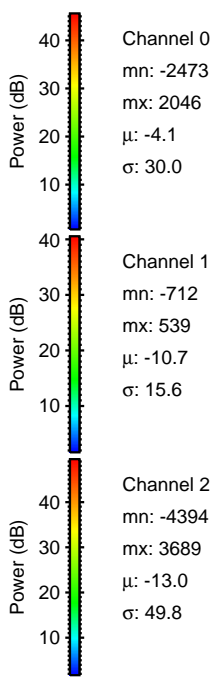
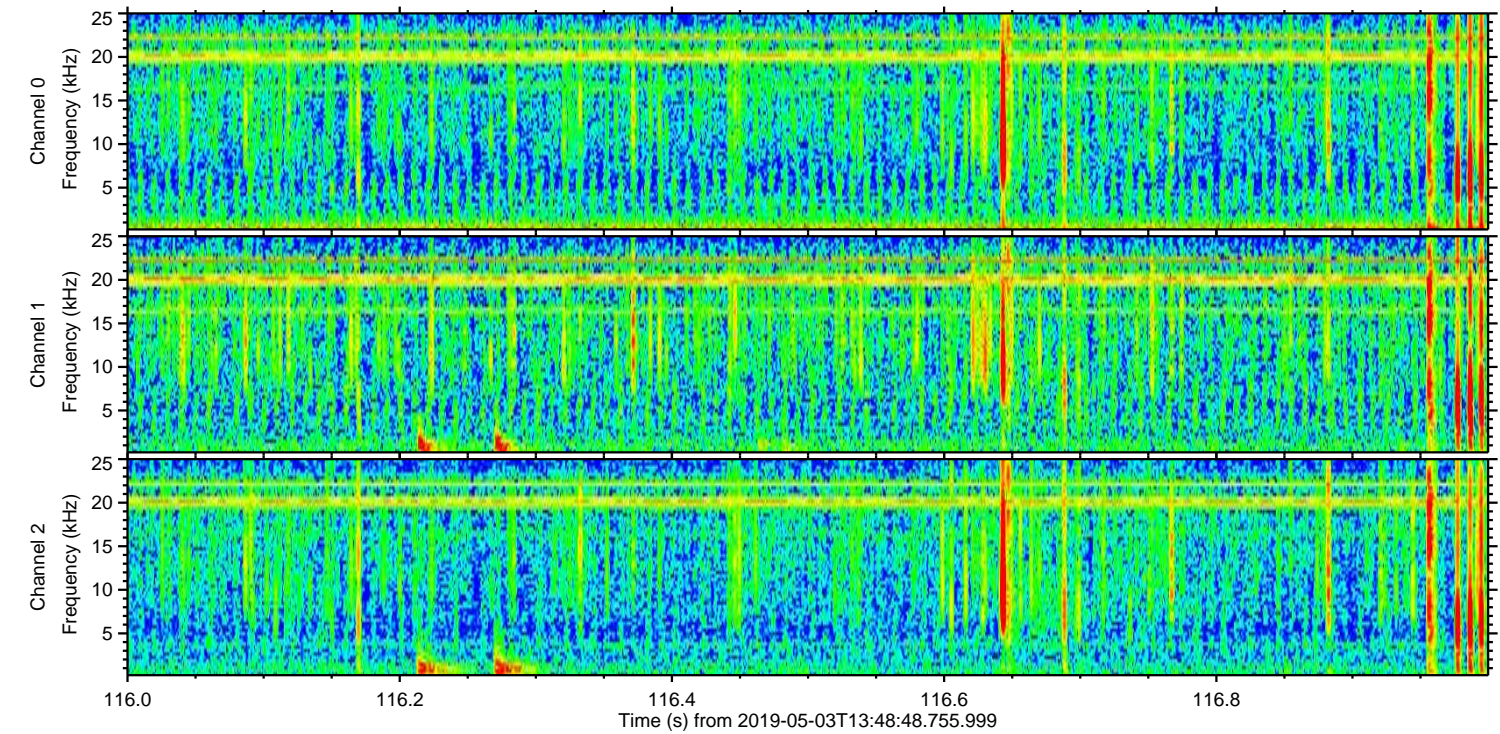
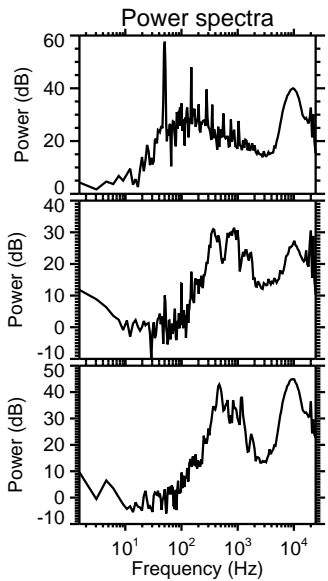
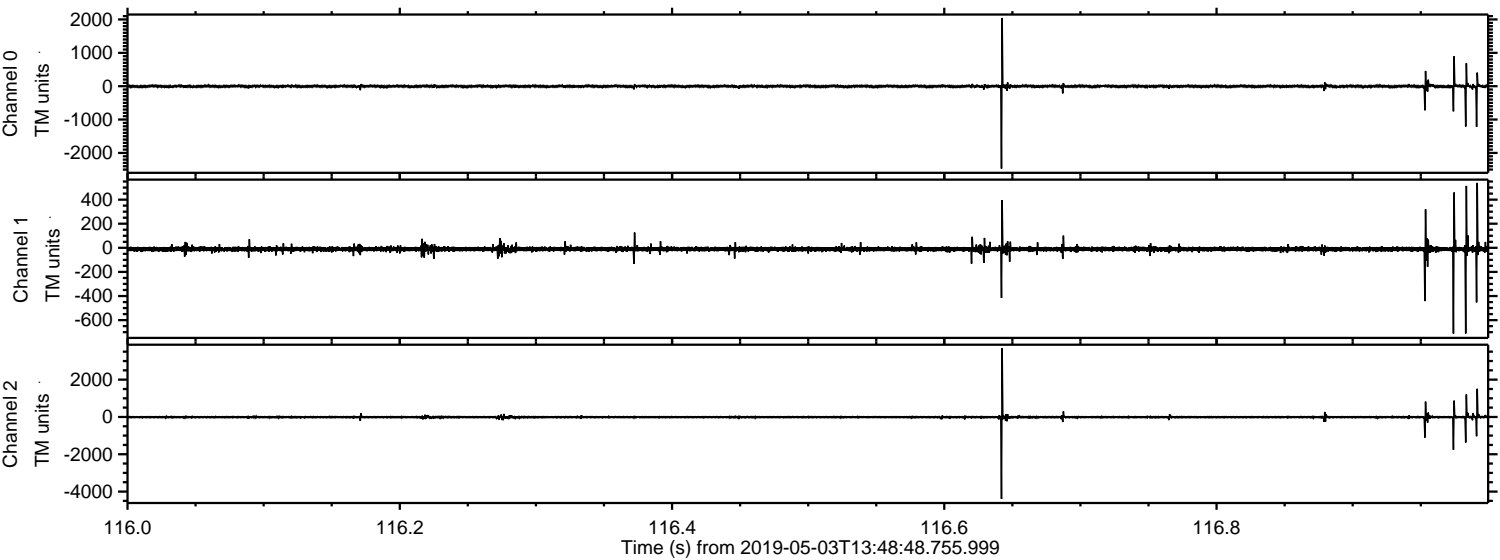


Processed Fri May 3 15:56:39 2019 by ELM ver.2012-10-06 from 001__elm20190503_134847__dat00.bin

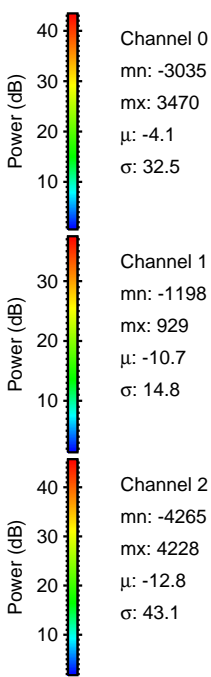
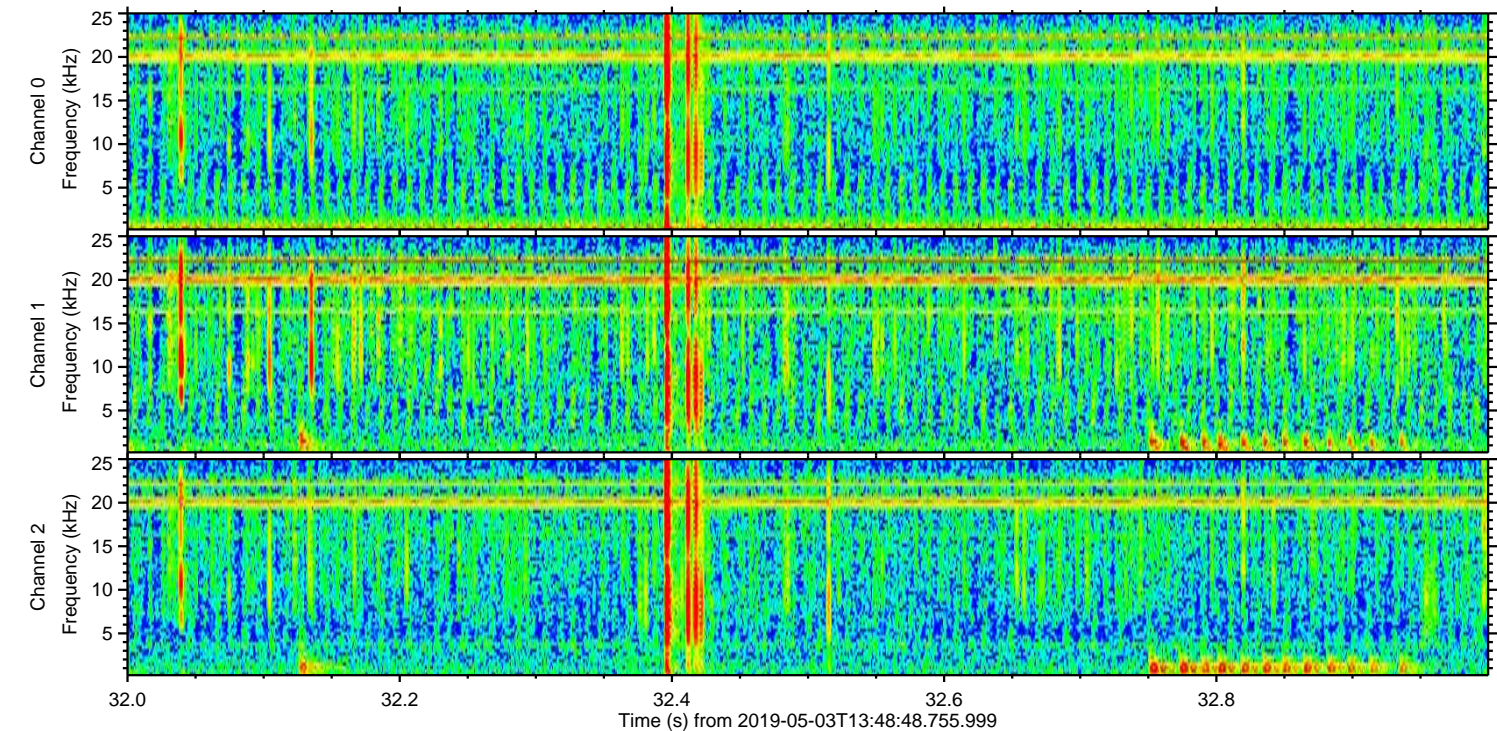
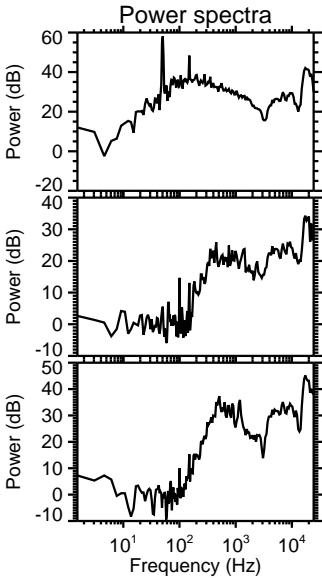
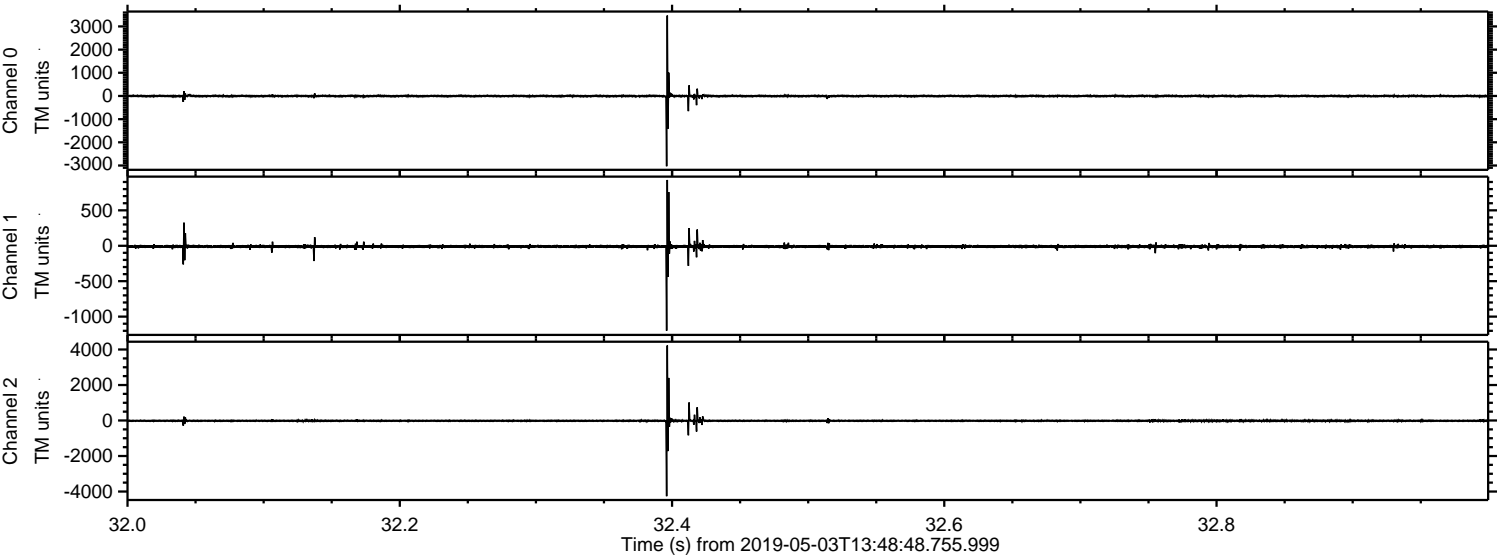


ELMAVAN 3D WAVEFORMS (Measured data sampled at 50 kHz) 50998 packets of 144 samples from 2019-05-03T13:48:48.755.999. Part 117/147

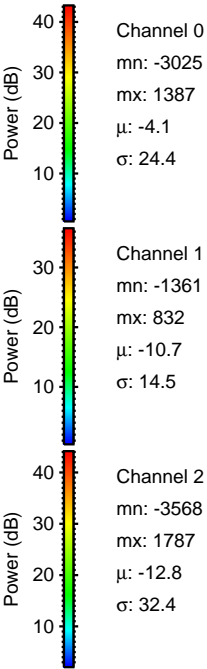
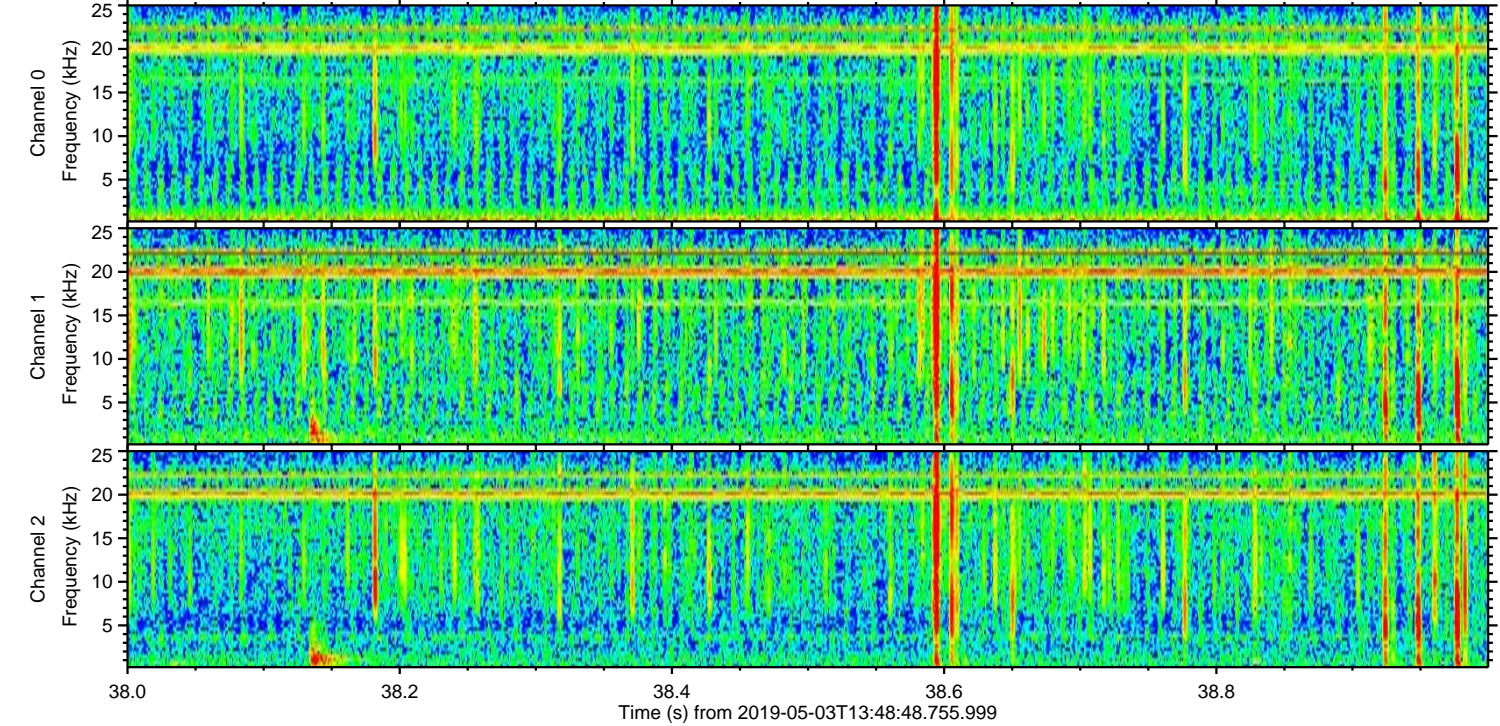
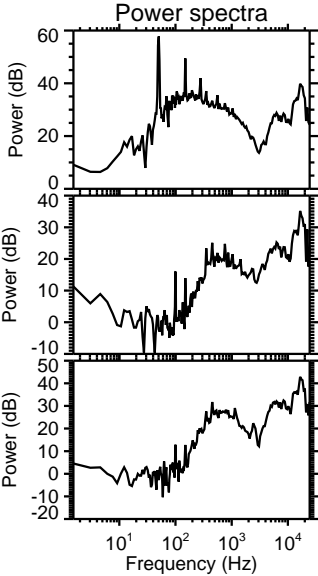
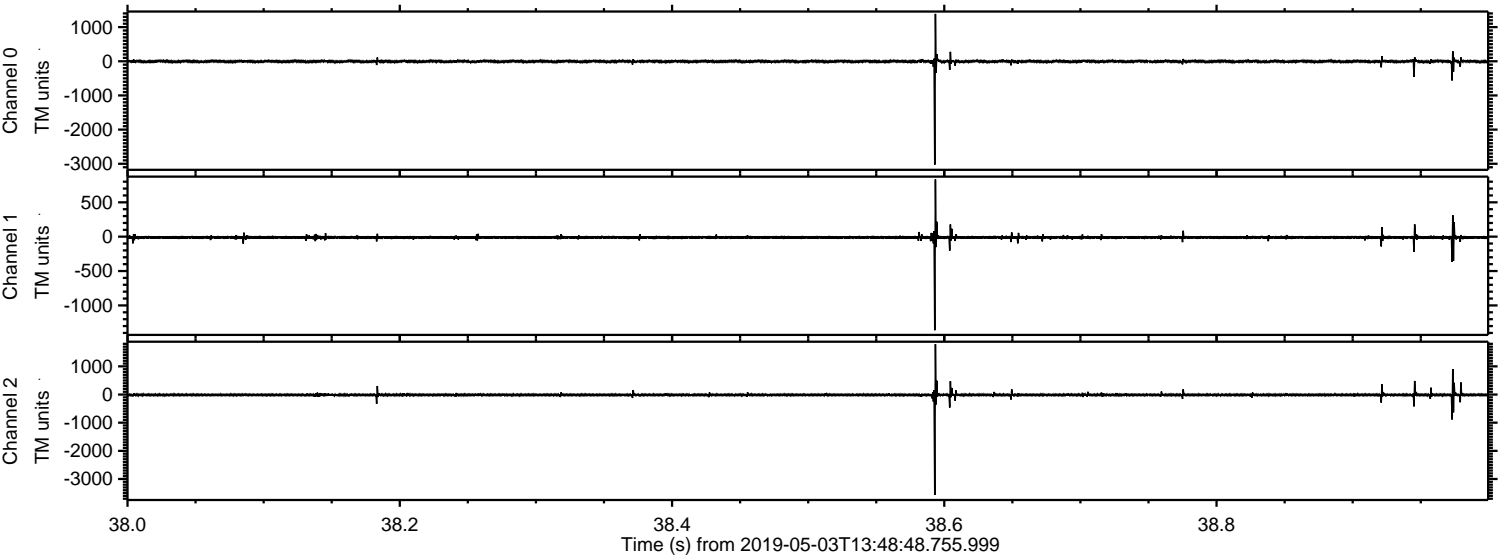
Processed Fri May 3 15:56:39 2019 by ELM ver.2012-10-06 from 001__elm20190503_134847__dat00.bin



Processed Fri May 3 15:56:40 2019 by ELM ver.2012-10-06 from 001__elm20190503_134847__dat00.bin

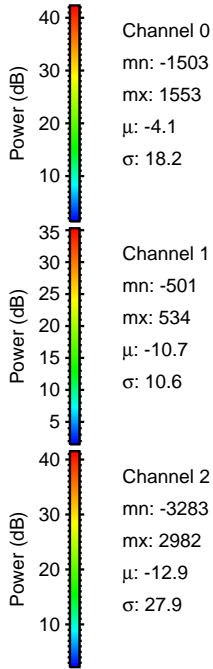
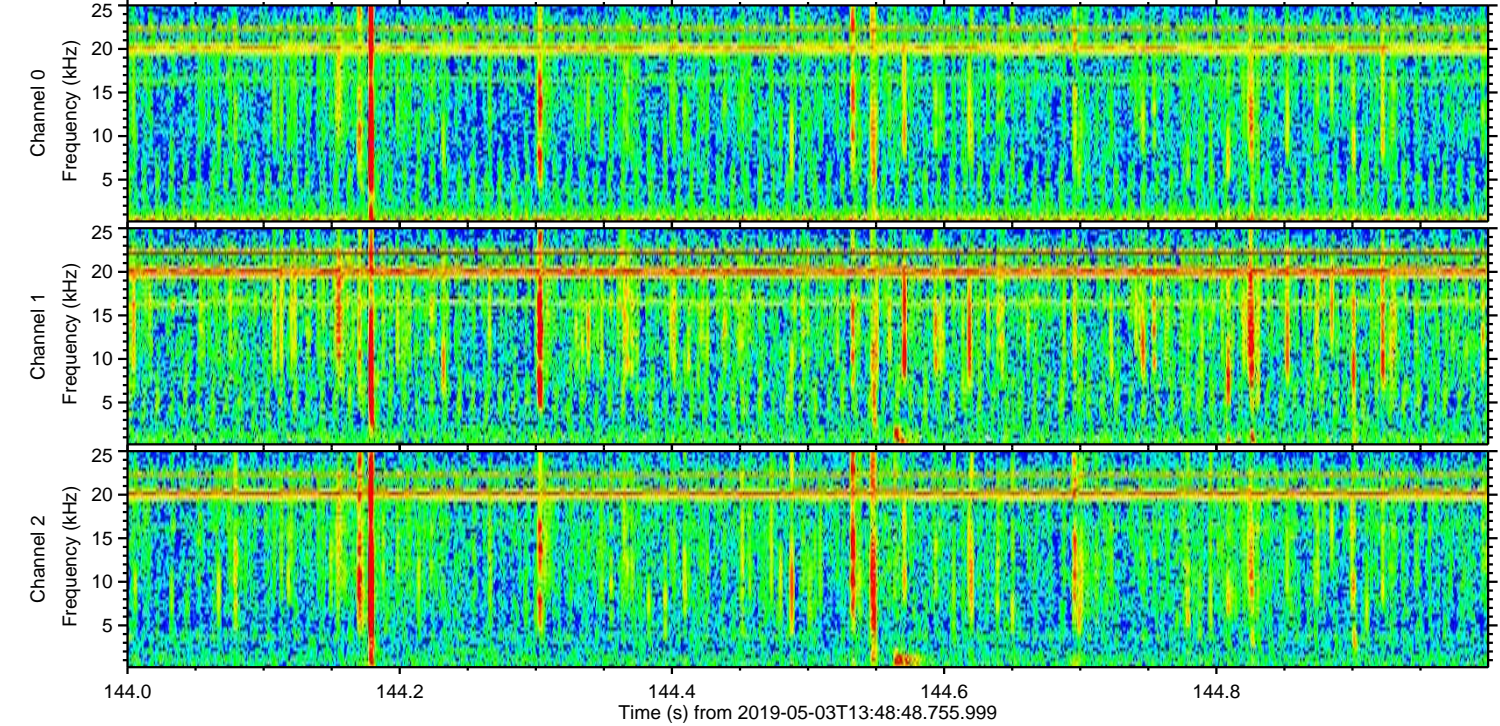
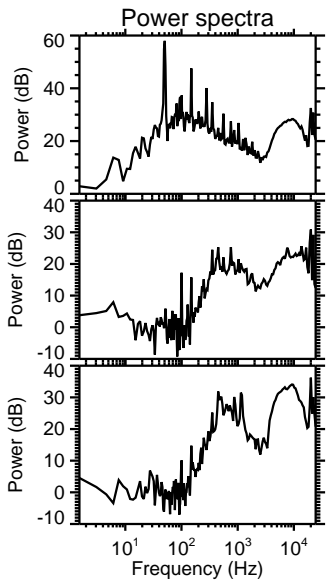
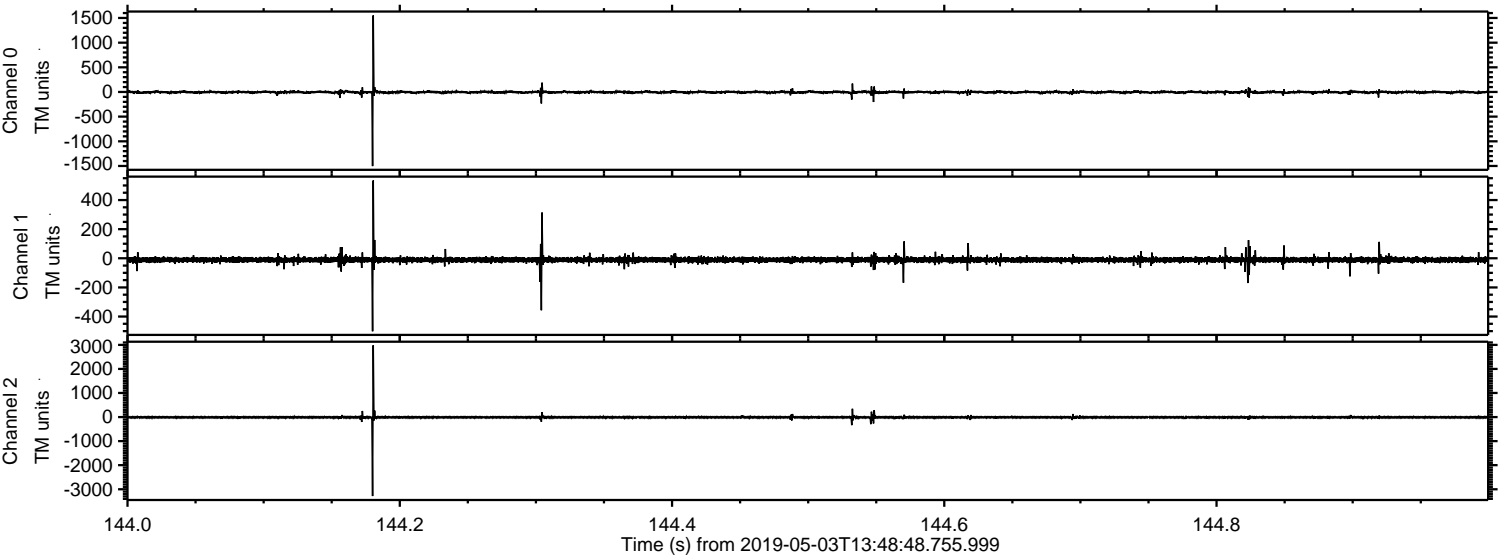


Processed Fri May 3 15:56:41 2019 by ELM ver.2012-10-06 from 001__elm20190503_134847__dat00.bin

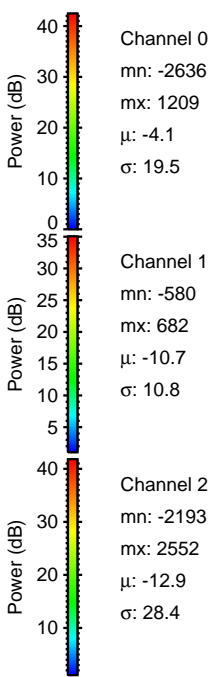
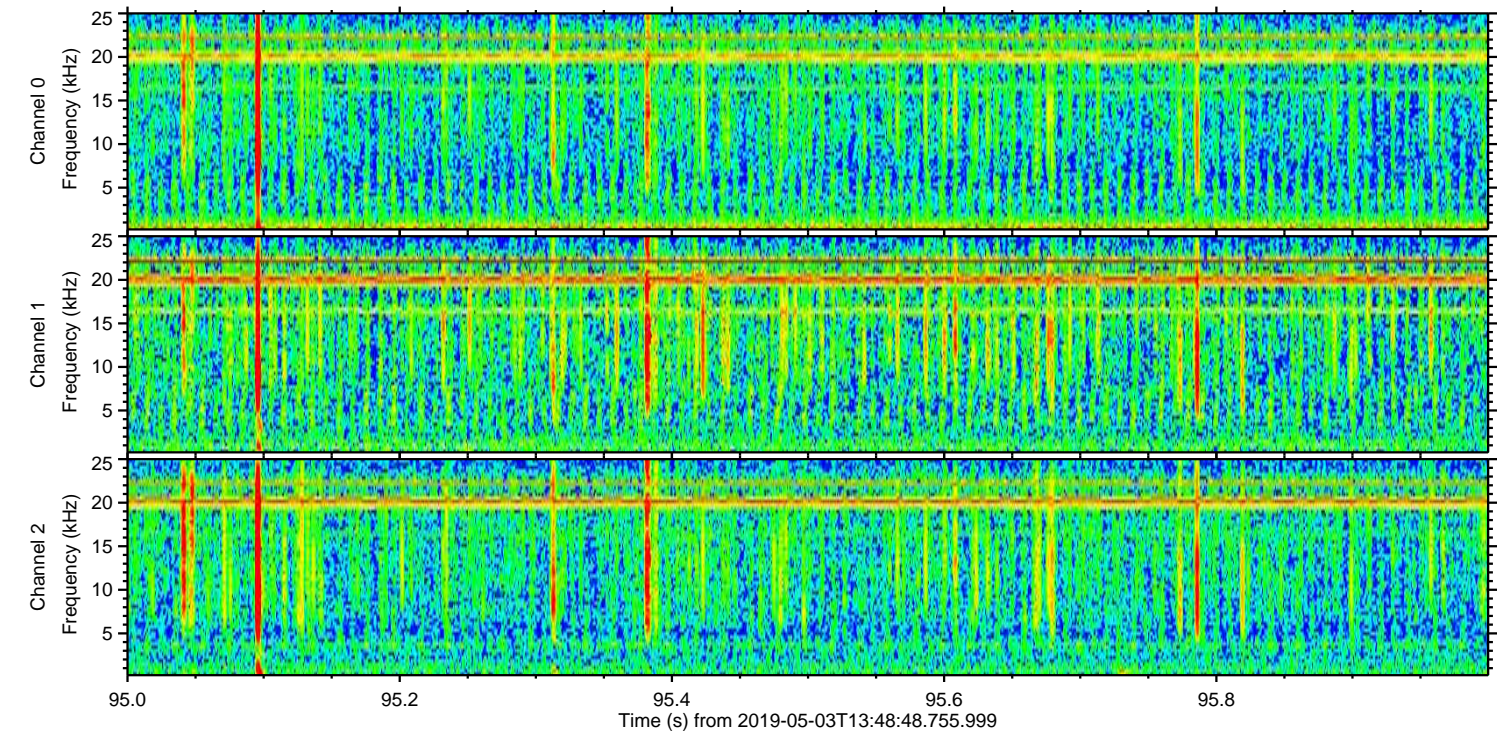
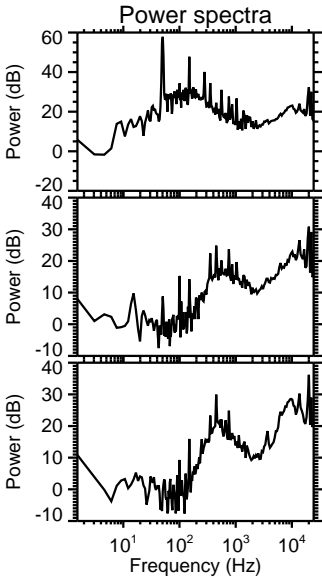
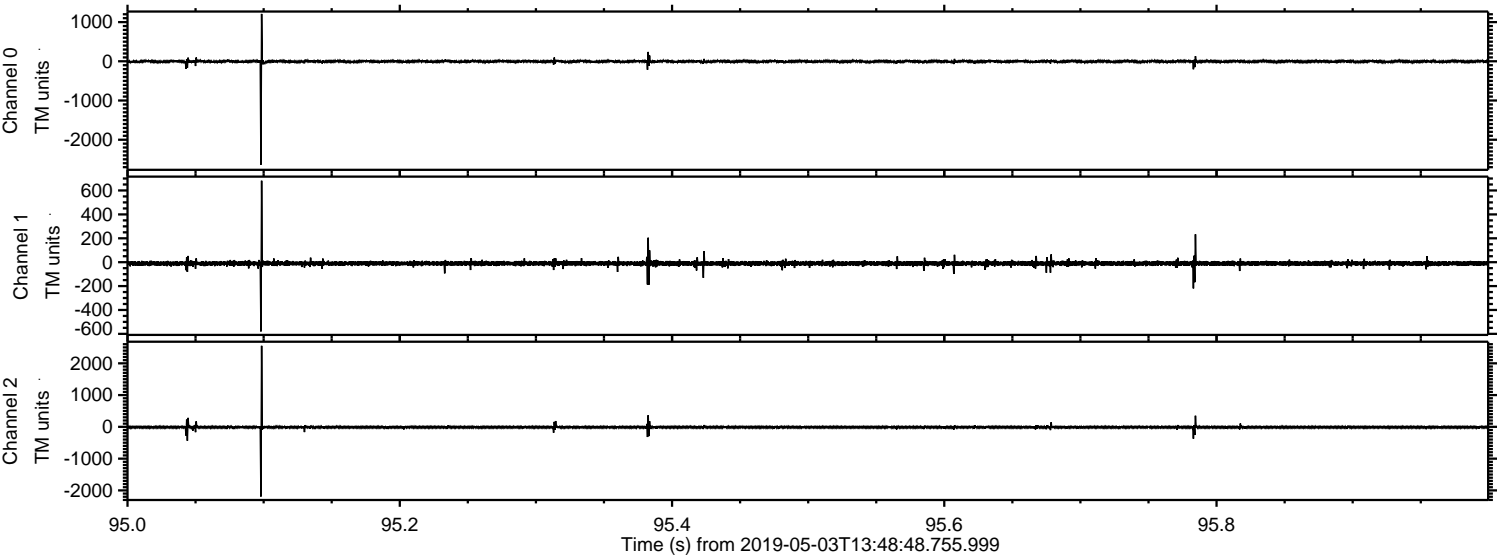


ELMAVAN 3D WAVEFORMS (Measured data sampled at 50 kHz) 50998 packets of 144 samples from 2019-05-03T13:48:48.755.999. Part 145/147

Processed Fri May 3 15:56:41 2019 by ELM ver.2012-10-06 from 001__elm20190503_134847__dat00.bin



Processed Fri May 3 15:56:42 2019 by ELM ver.2012-10-06 from 001__elm20190503_134847__dat00.bin



Channel 0
mn: -2636
mx: 1209
 μ : -4.1
 σ : 19.5

Channel 1
mn: -580
mx: 682
 μ : -10.7
 σ : 10.8

Channel 2
mn: -2193
mx: 2552
 μ : -12.9
 σ : 28.4

Processed Fri May 3 15:56:43 2019 by ELM ver.2012-10-06 from 001__elm20190503_134847__dat00.bin

