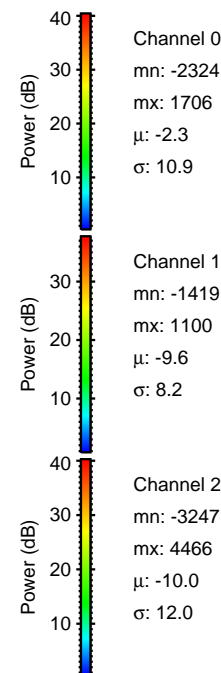
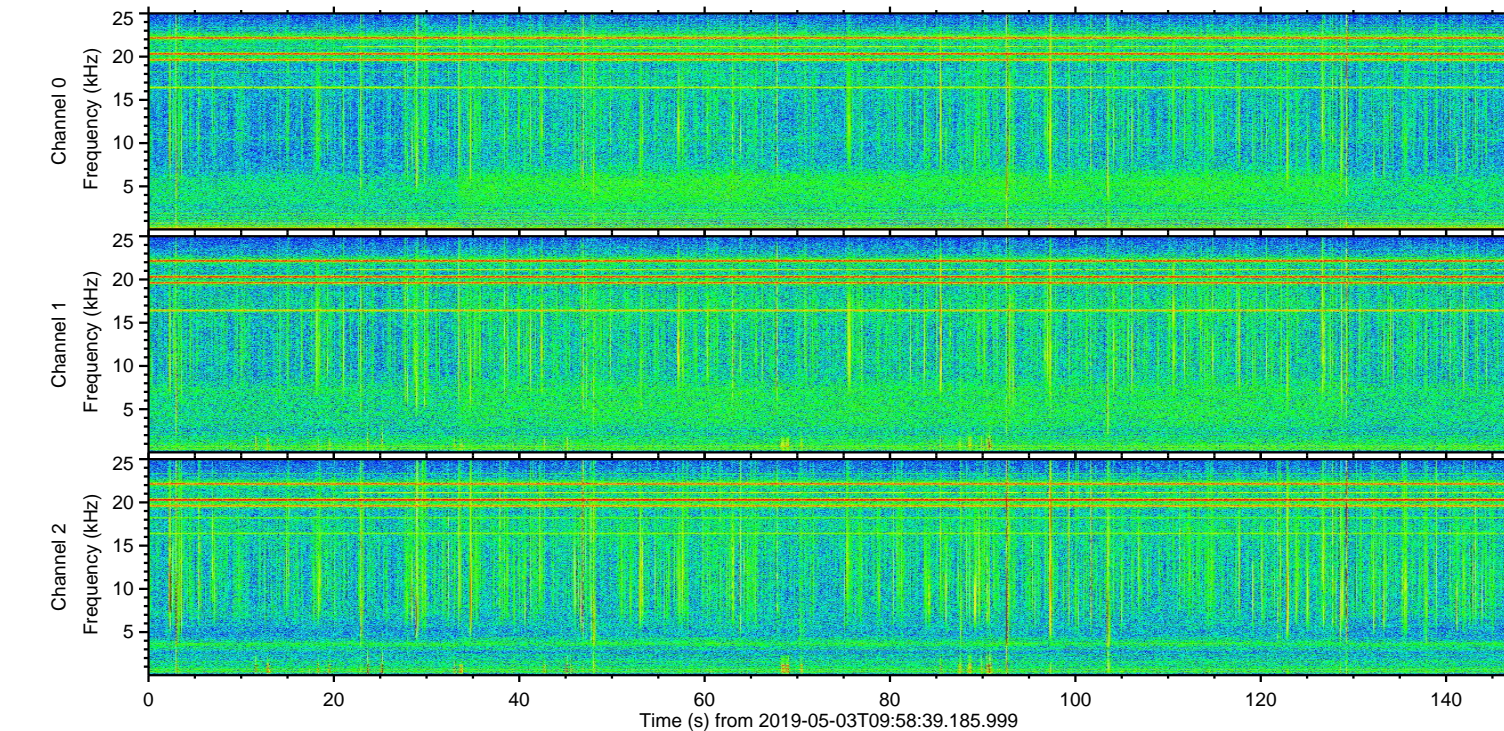
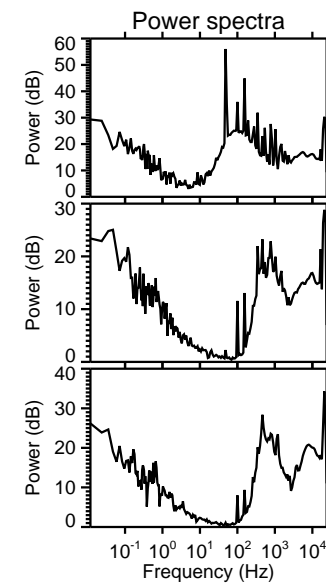
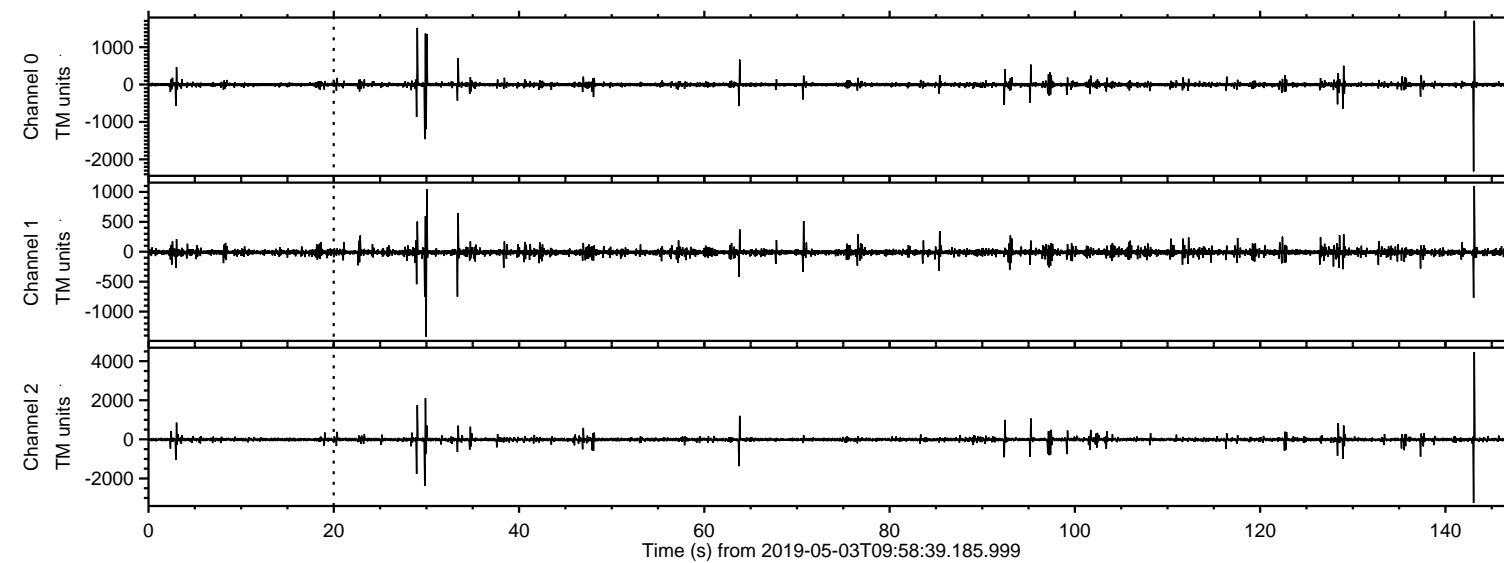


ELMAVAN 3D WAVEFORMS (Measured data sampled at 50 kHz) 50999 packets of 144 samples from 2019-05-03T09:58:39.185.999.

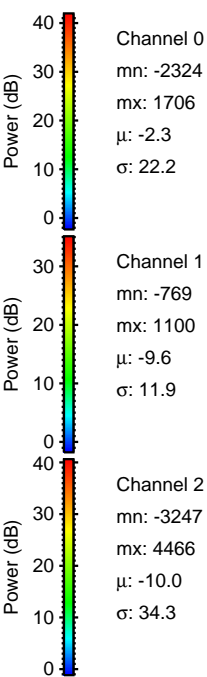
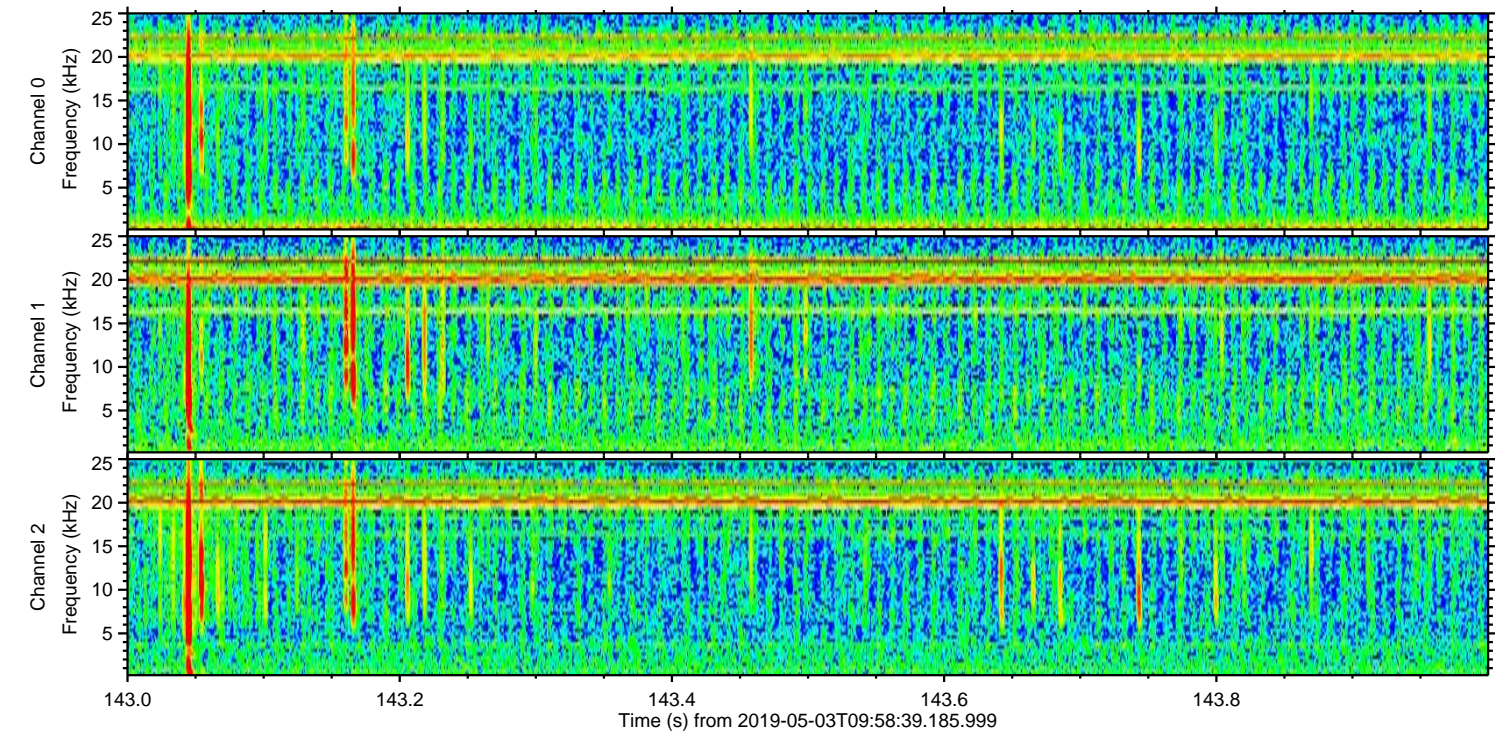
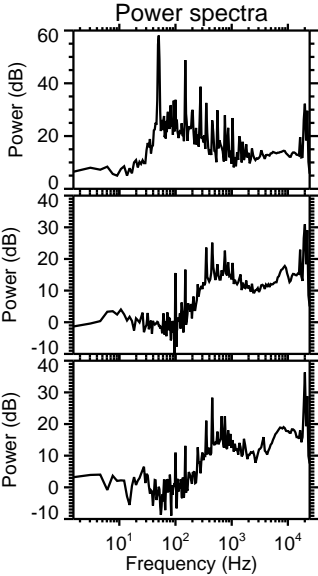
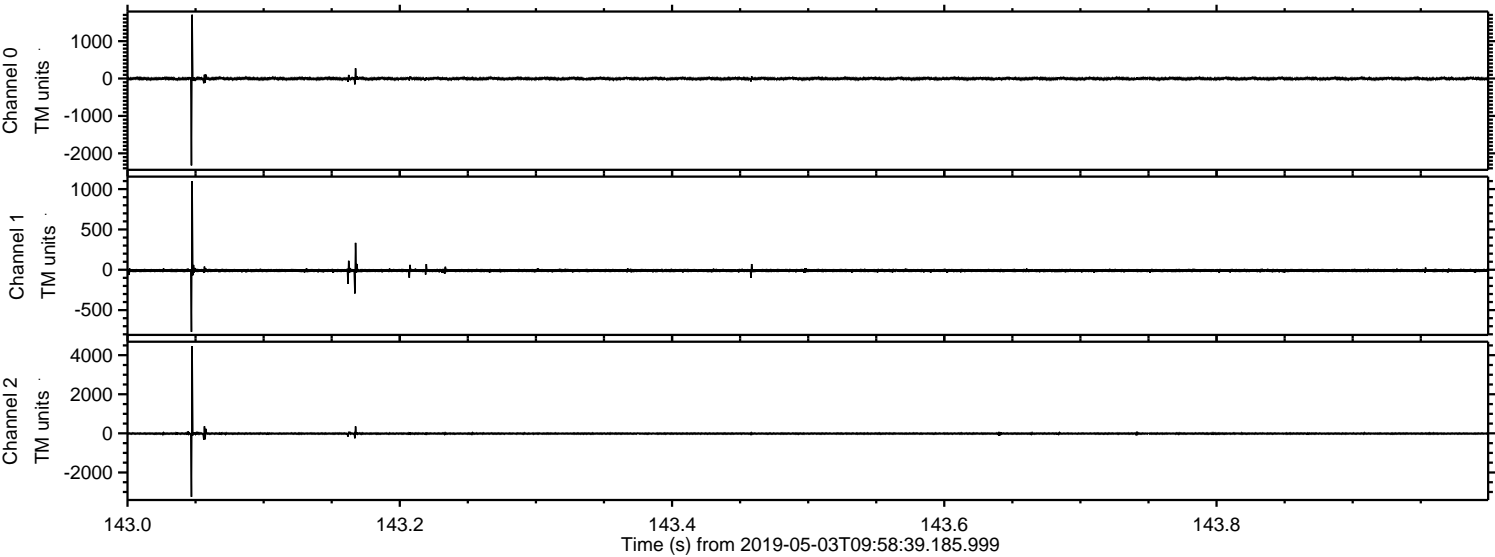
Processed Fri May 3 12:06:18 2019 by ELM ver.2012-10-06 from 001\_\_elm20190503\_095838\_\_dat00.bin





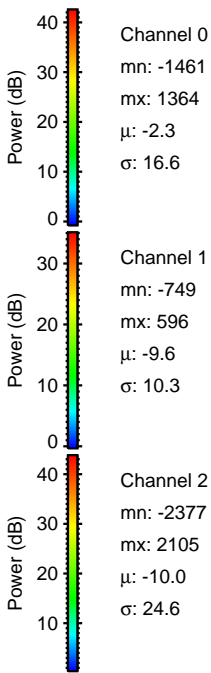
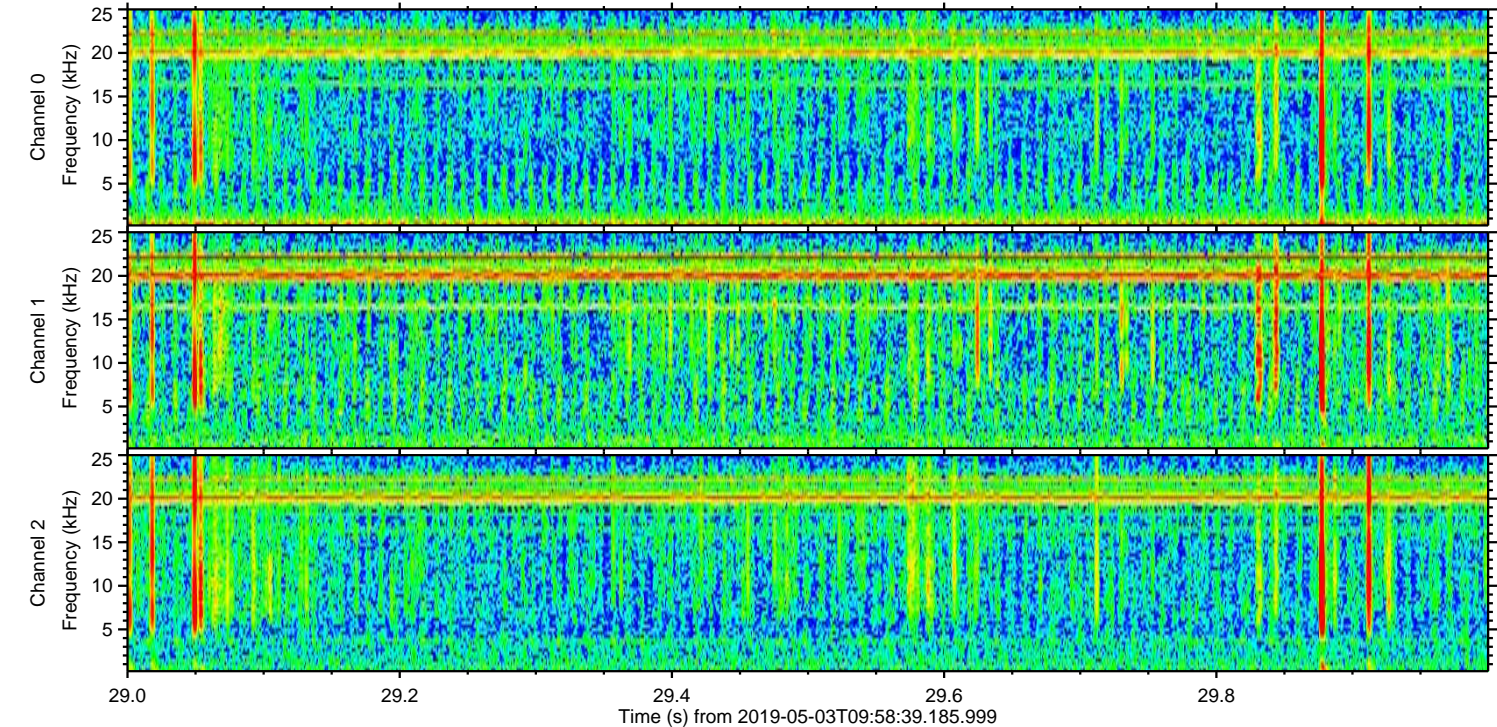
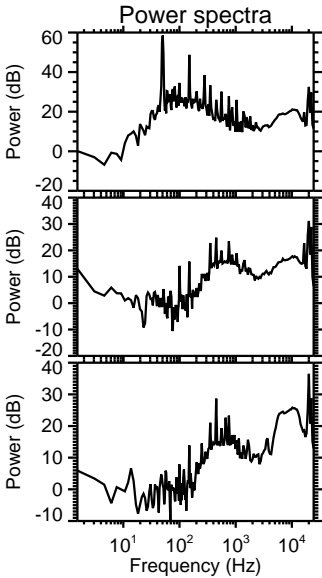
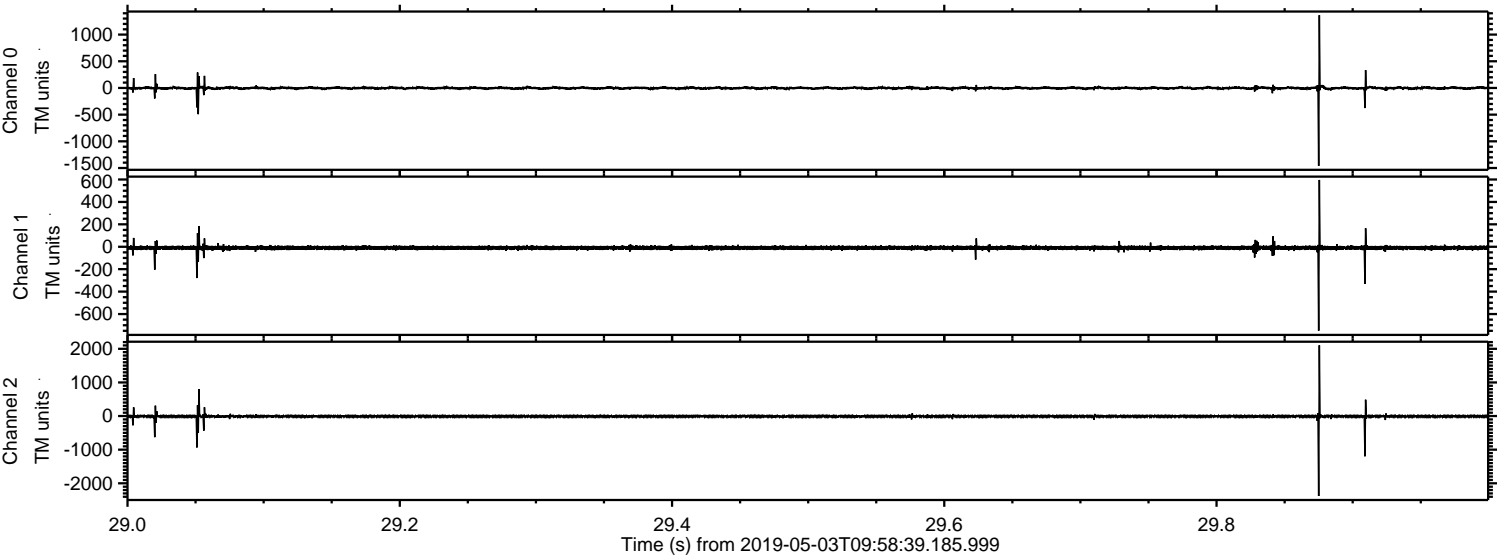
ELMAVAN 3D WAVEFORMS (Measured data sampled at 50 kHz) 50999 packets of 144 samples from 2019-05-03T09:58:39.185.999. Part 144/147

Processed Fri May 3 12:06:26 2019 by ELM ver.2012-10-06 from 001\_\_elm20190503\_095838\_\_dat00.bin



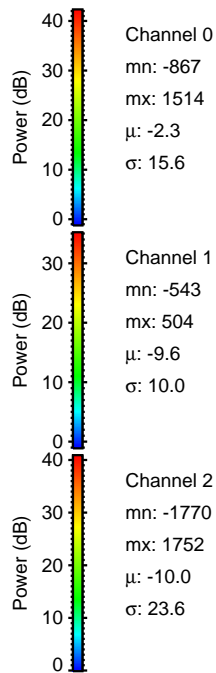
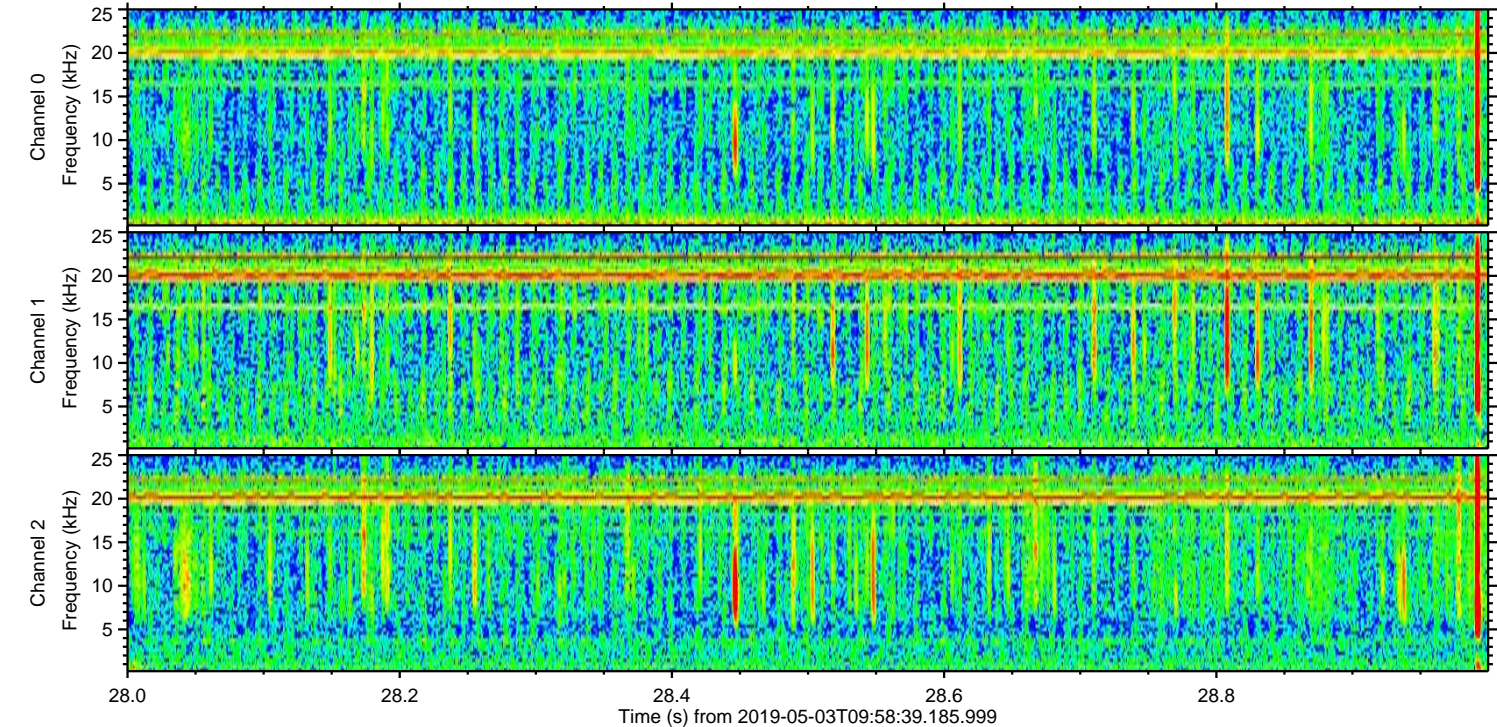
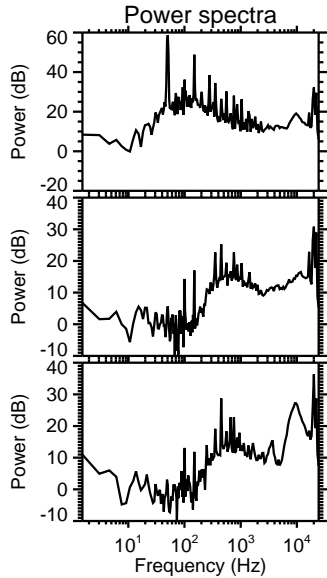
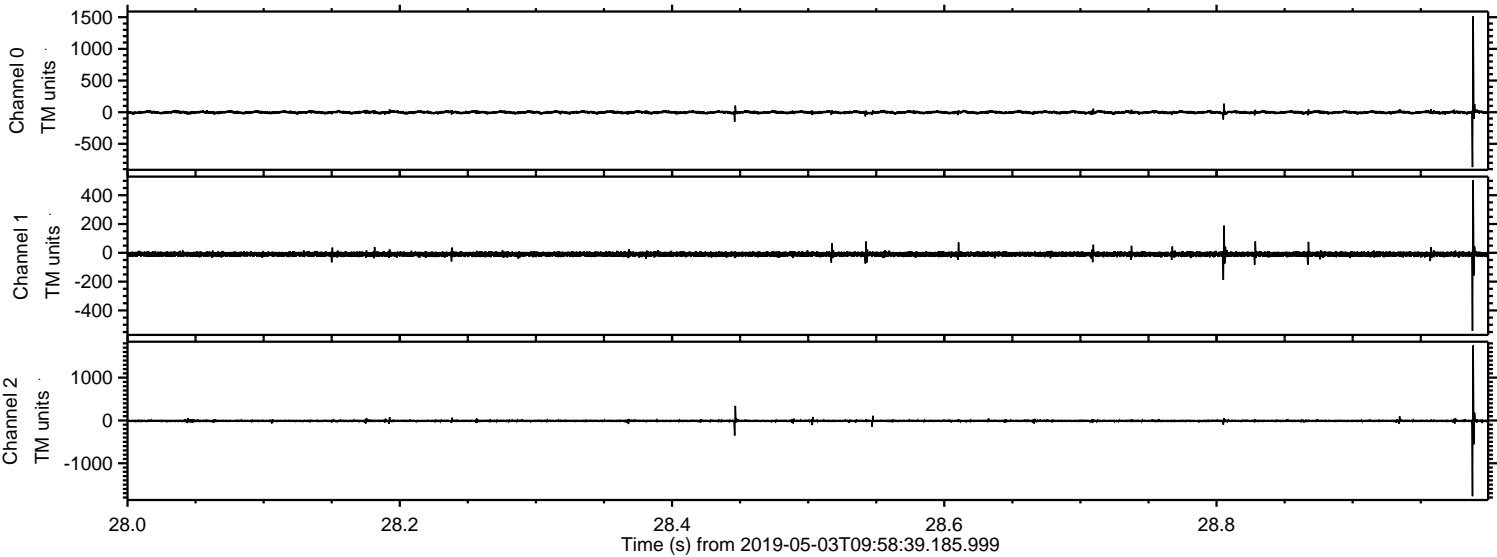


Processed Fri May 3 12:06:27 2019 by ELM ver.2012-10-06 from 001\_\_elm20190503\_095838\_\_dat00.bin



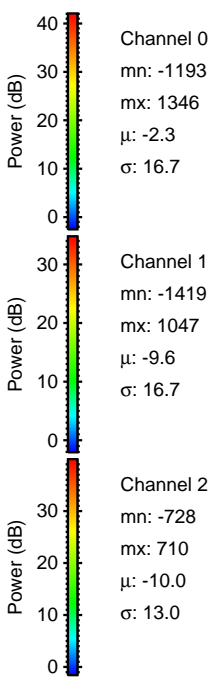
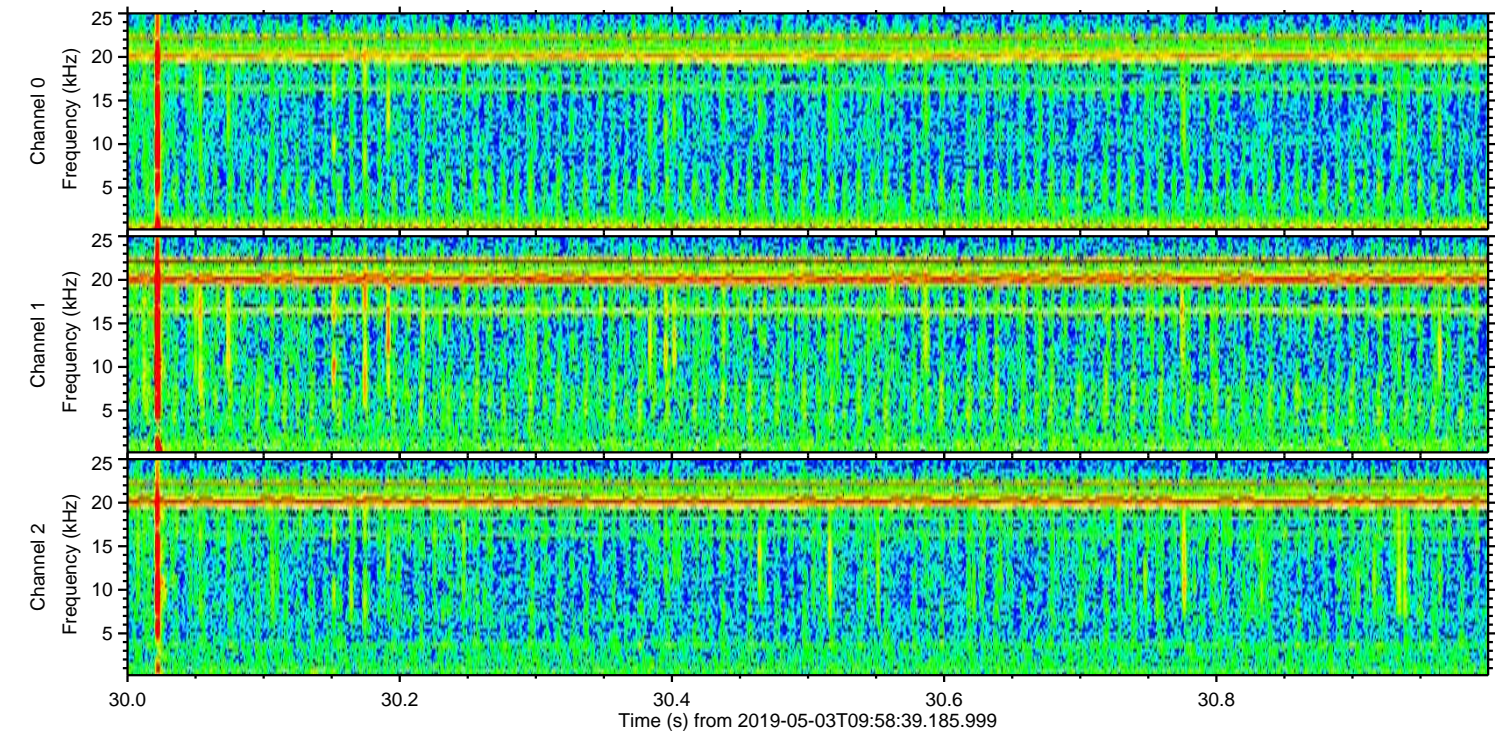
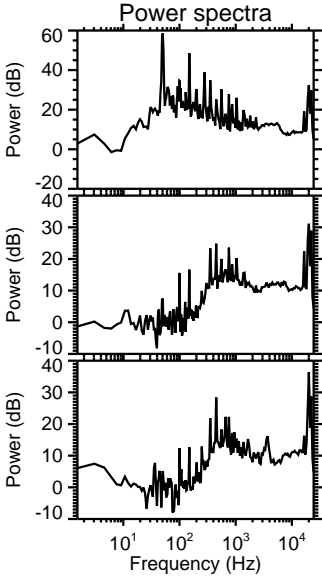
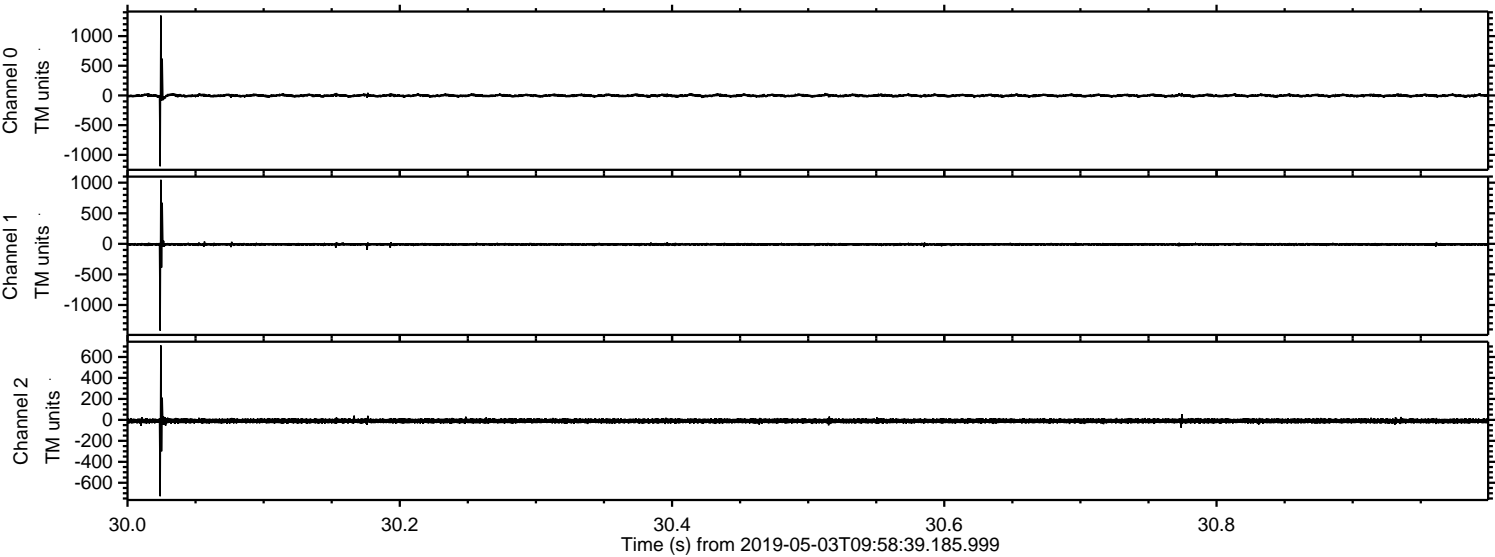


Processed Fri May 3 12:06:28 2019 by ELM ver.2012-10-06 from 001\_\_elm20190503\_095838\_\_dat00.bin



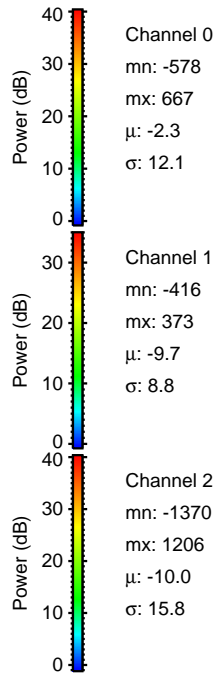
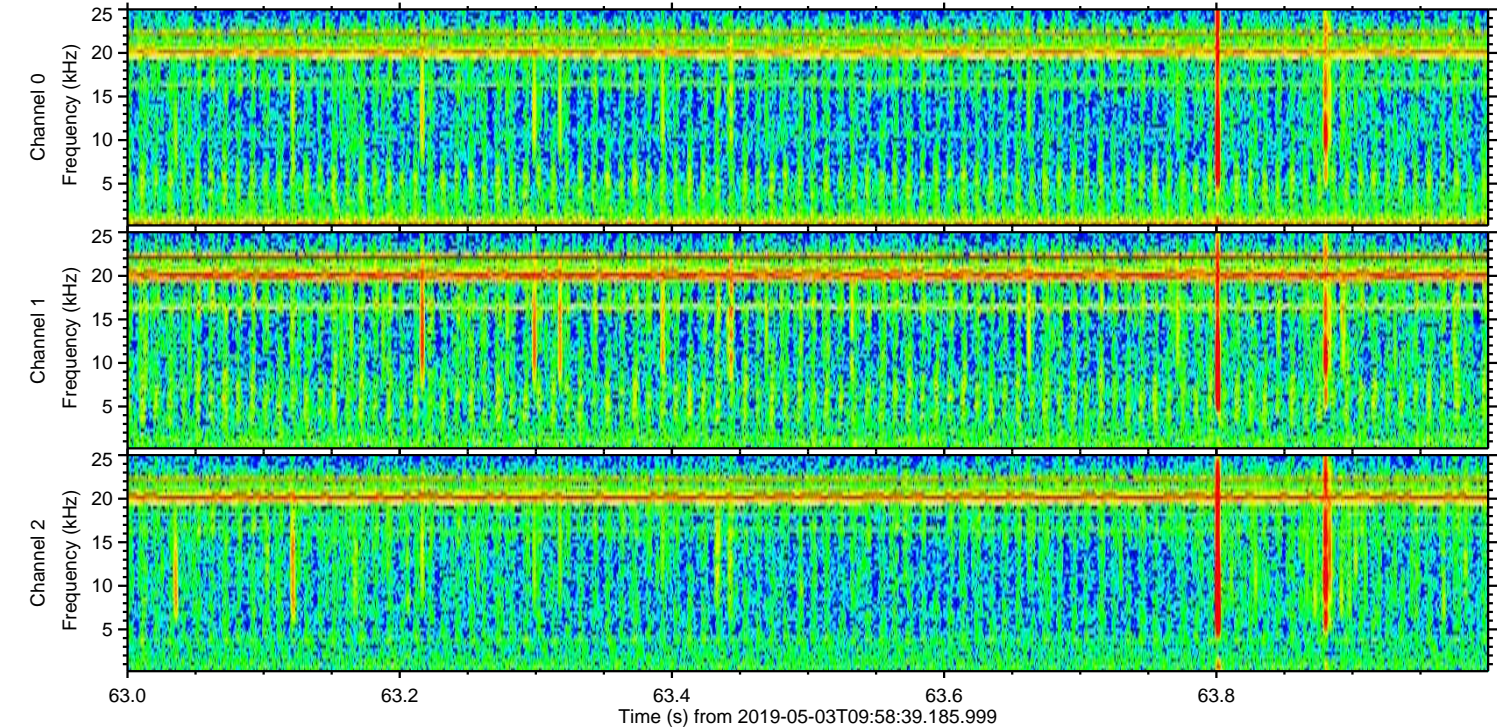
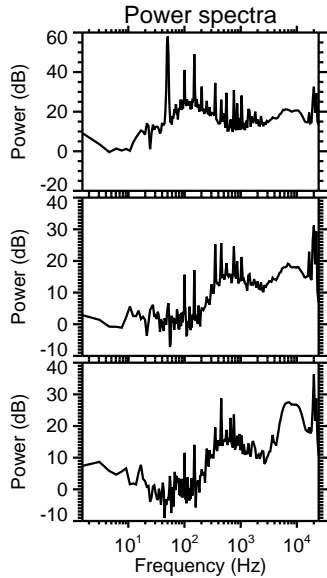
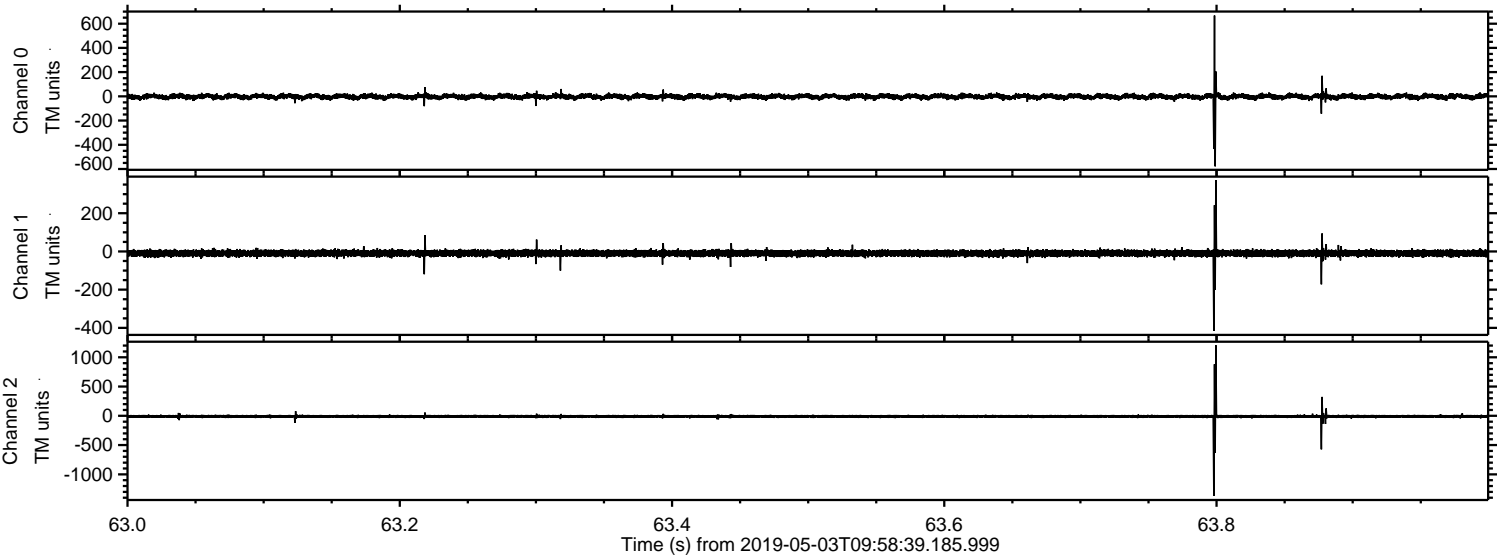


Processed Fri May 3 12:06:29 2019 by ELM ver.2012-10-06 from 001\_\_elm20190503\_095838\_\_dat00.bin



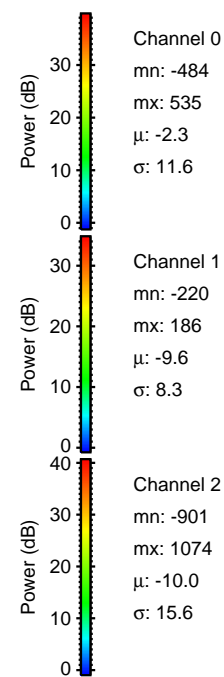
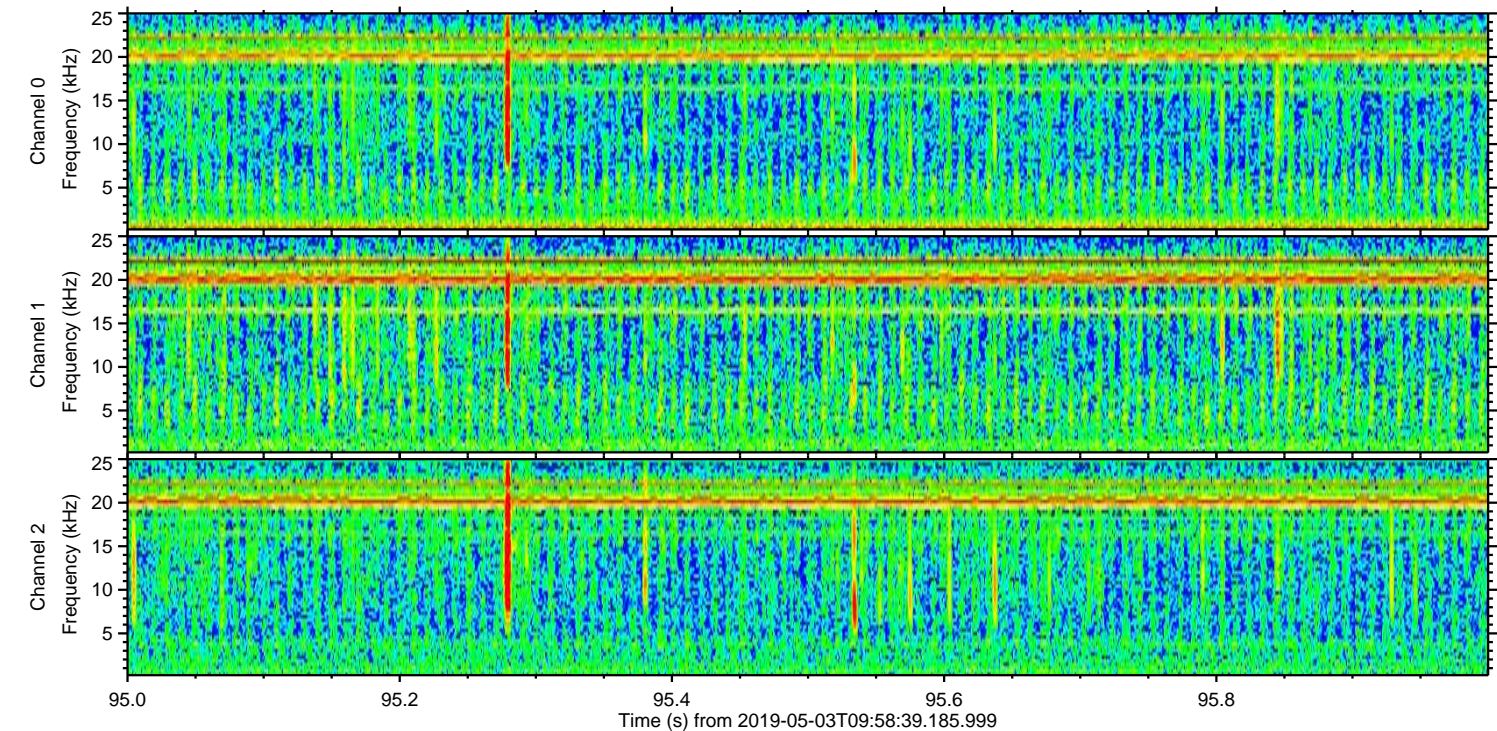
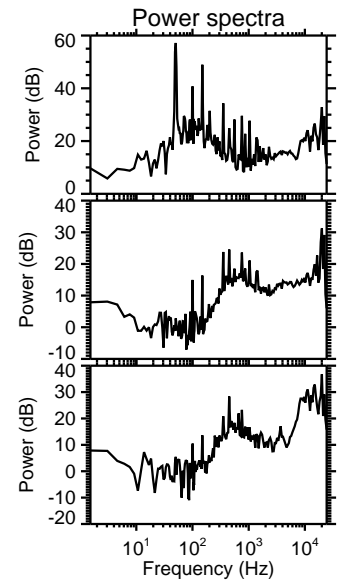
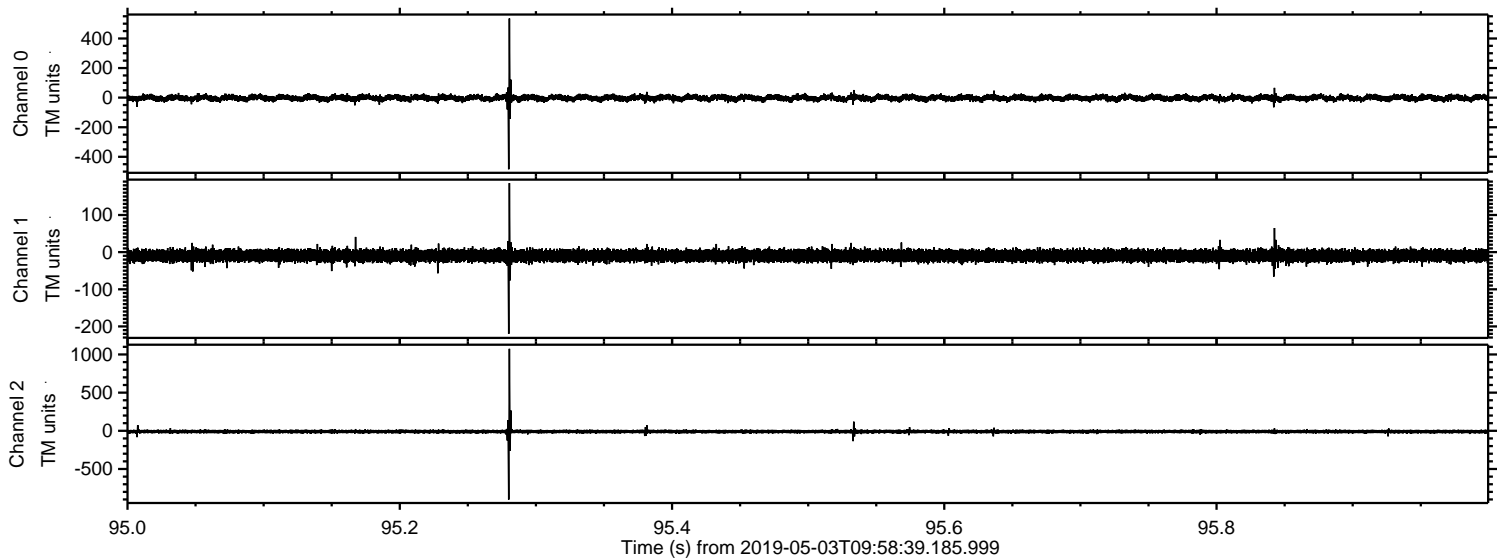


Processed Fri May 3 12:06:30 2019 by ELM ver.2012-10-06 from 001\_\_elm20190503\_095838\_\_dat00.bin



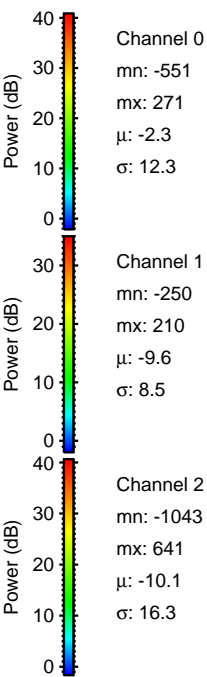
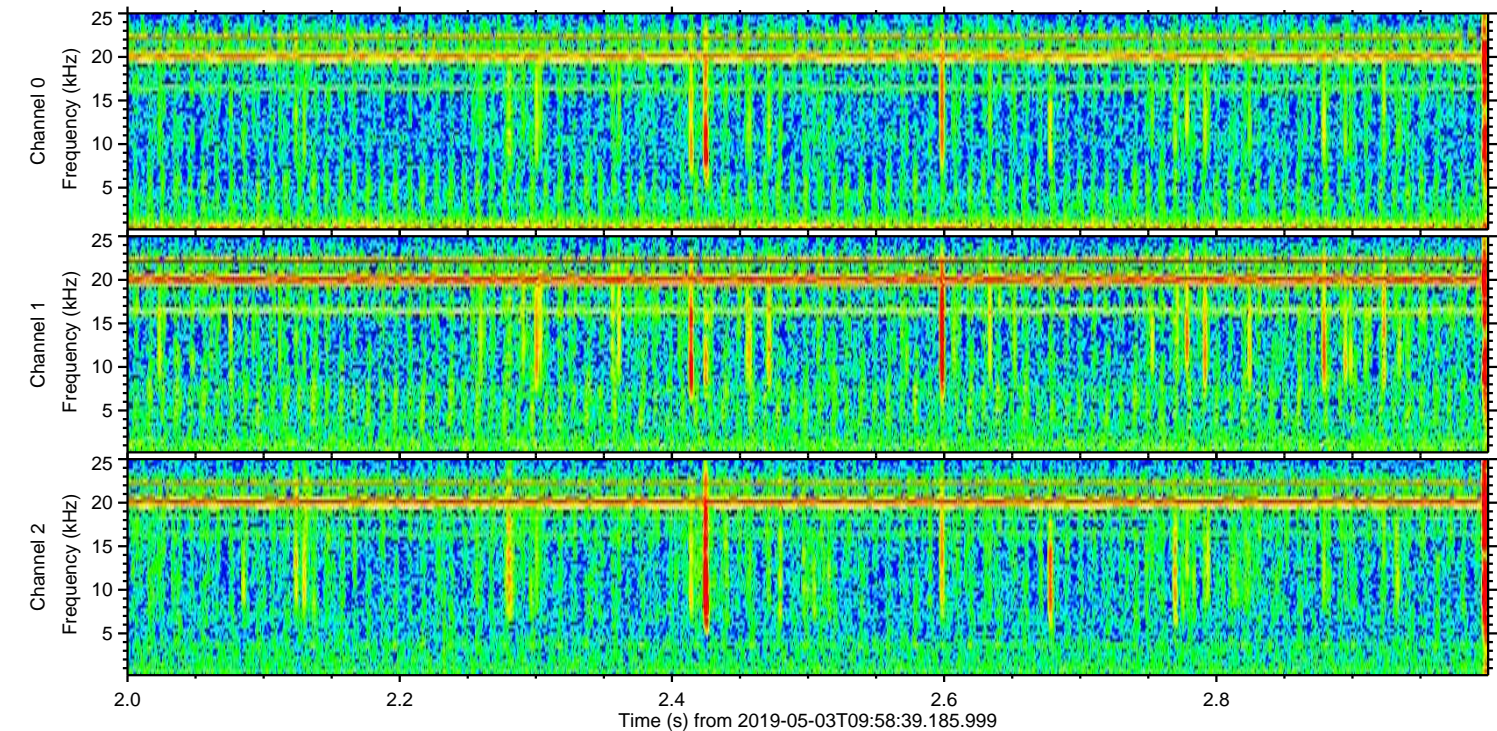
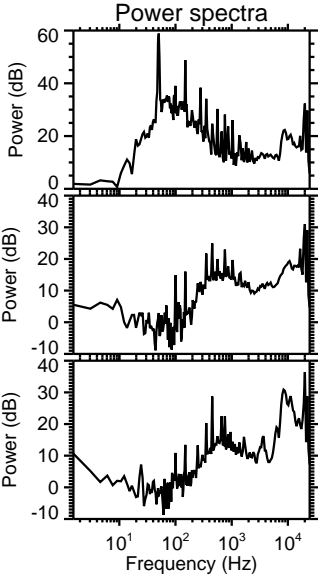
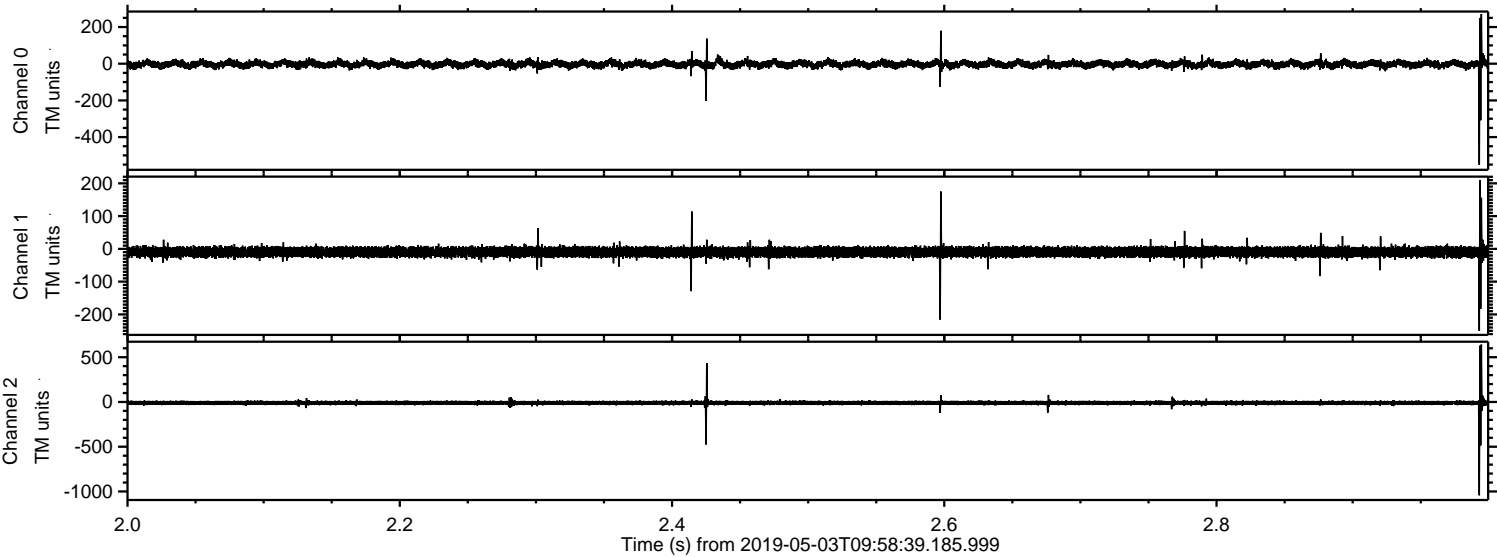


Processed Fri May 3 12:06:31 2019 by ELM ver.2012-10-06 from 001\_\_elm20190503\_095838\_\_dat00.bin



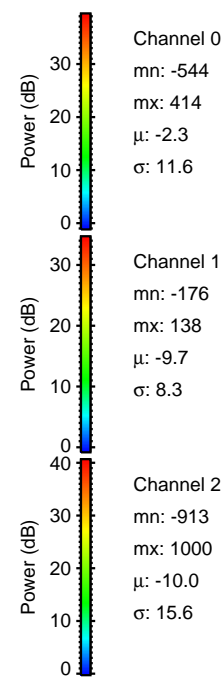
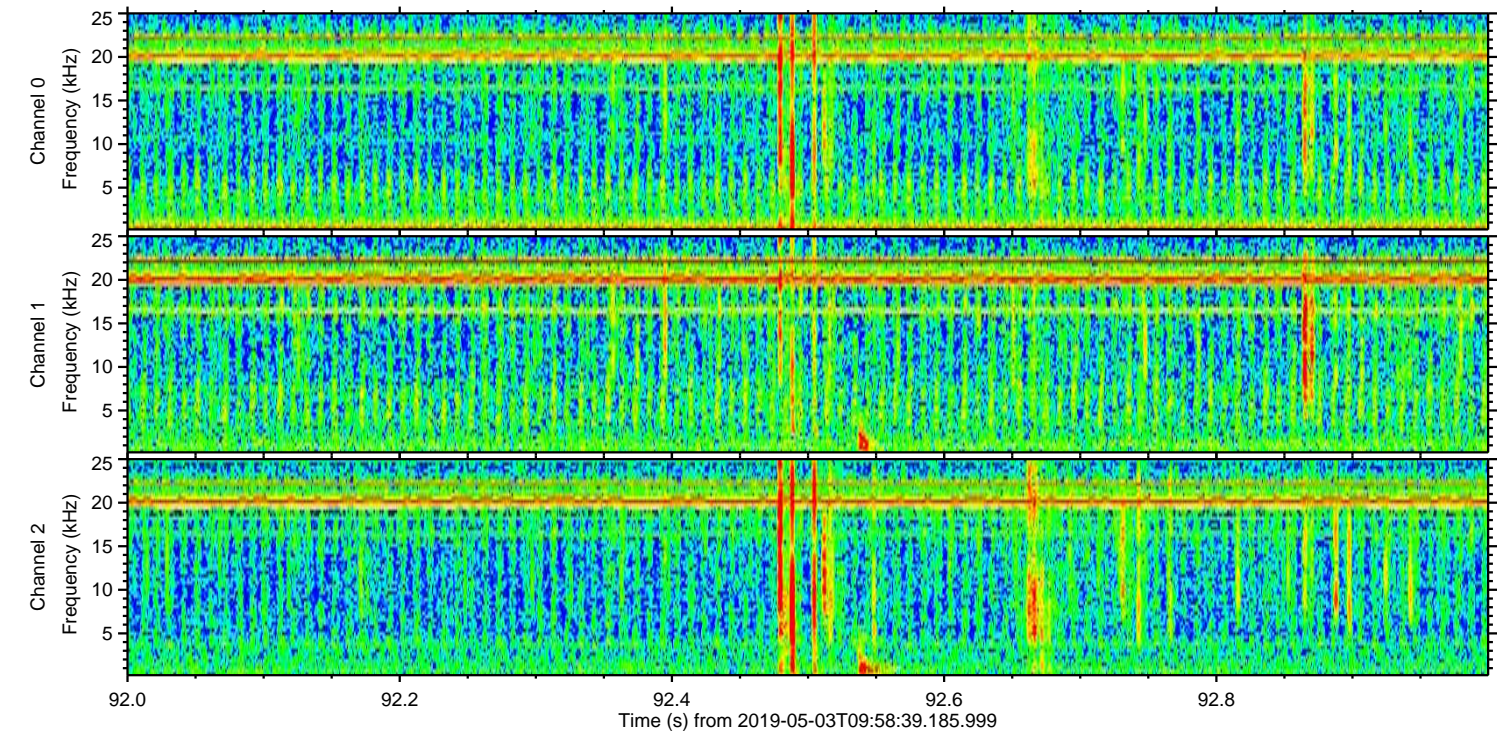
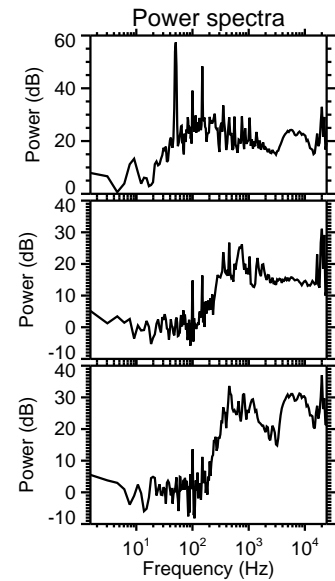
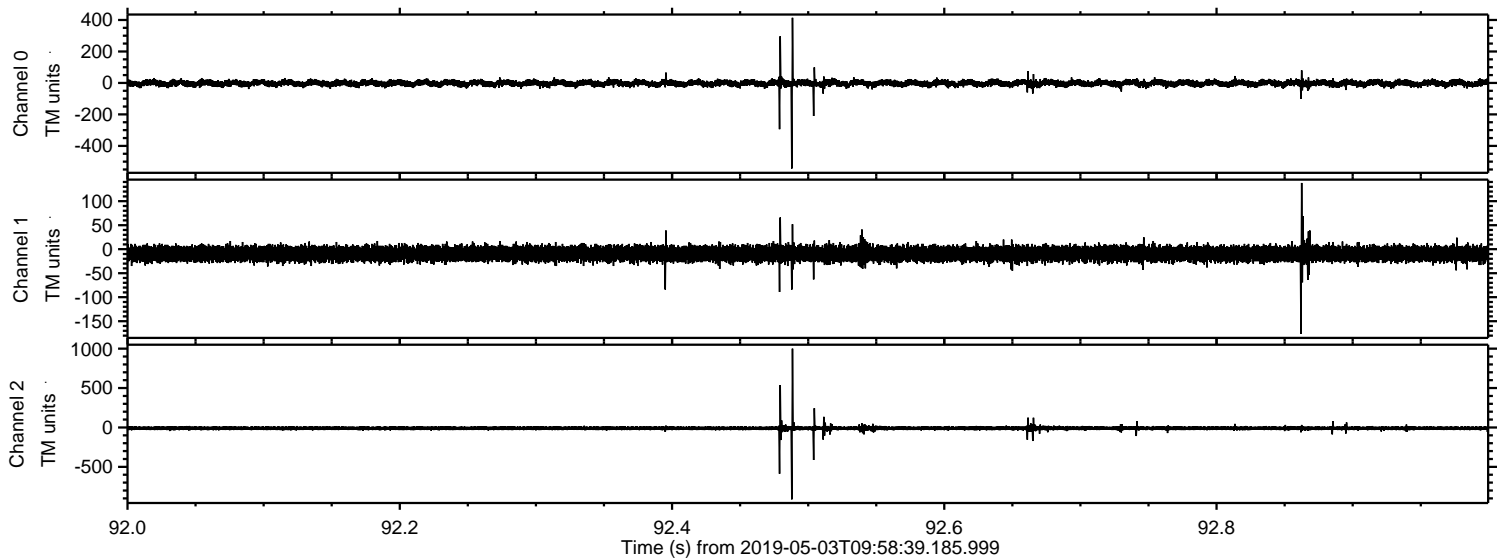


Processed Fri May 3 12:06:31 2019 by ELM ver.2012-10-06 from 001\_\_elm20190503\_095838\_\_dat00.bin





Processed Fri May 3 12:06:32 2019 by ELM ver.2012-10-06 from 001\_\_elm20190503\_095838\_\_dat00.bin





ELMAVAN 3D WAVEFORMS (Measured data sampled at 50 kHz) 50999 packets of 144 samples from 2019-05-03T09:58:39.185.999. Part 130/147

Processed Fri May 3 12:06:33 2019 by ELM ver.2012-10-06 from 001\_\_elm20190503\_095838\_\_dat00.bin

