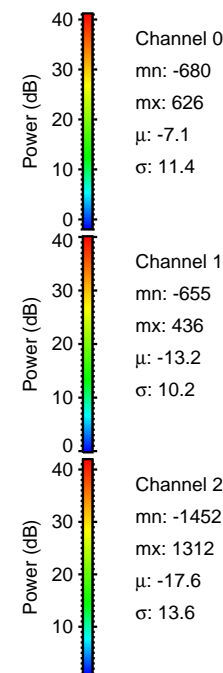
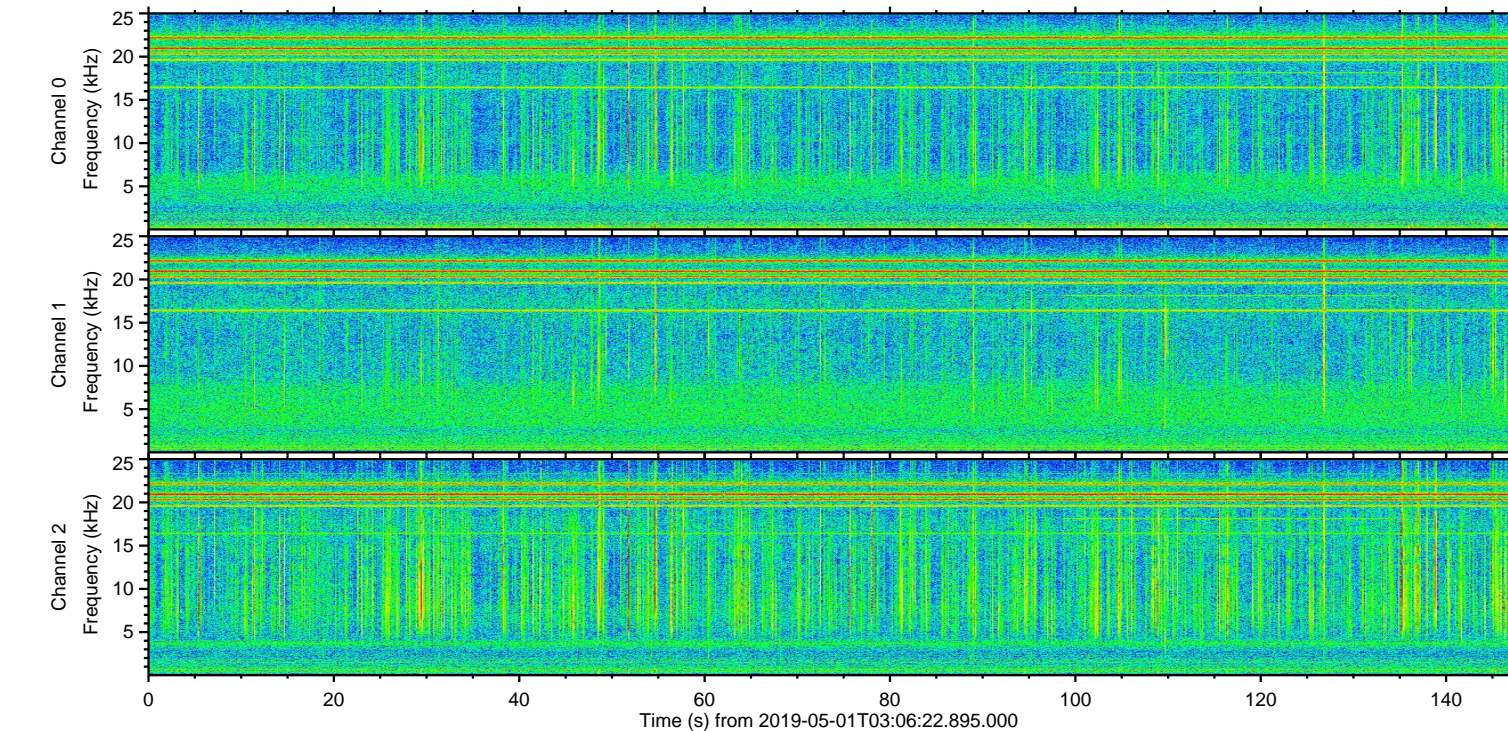
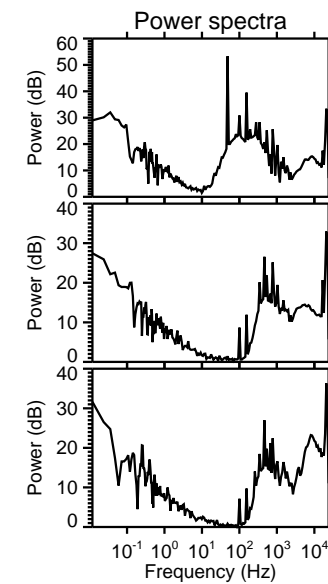
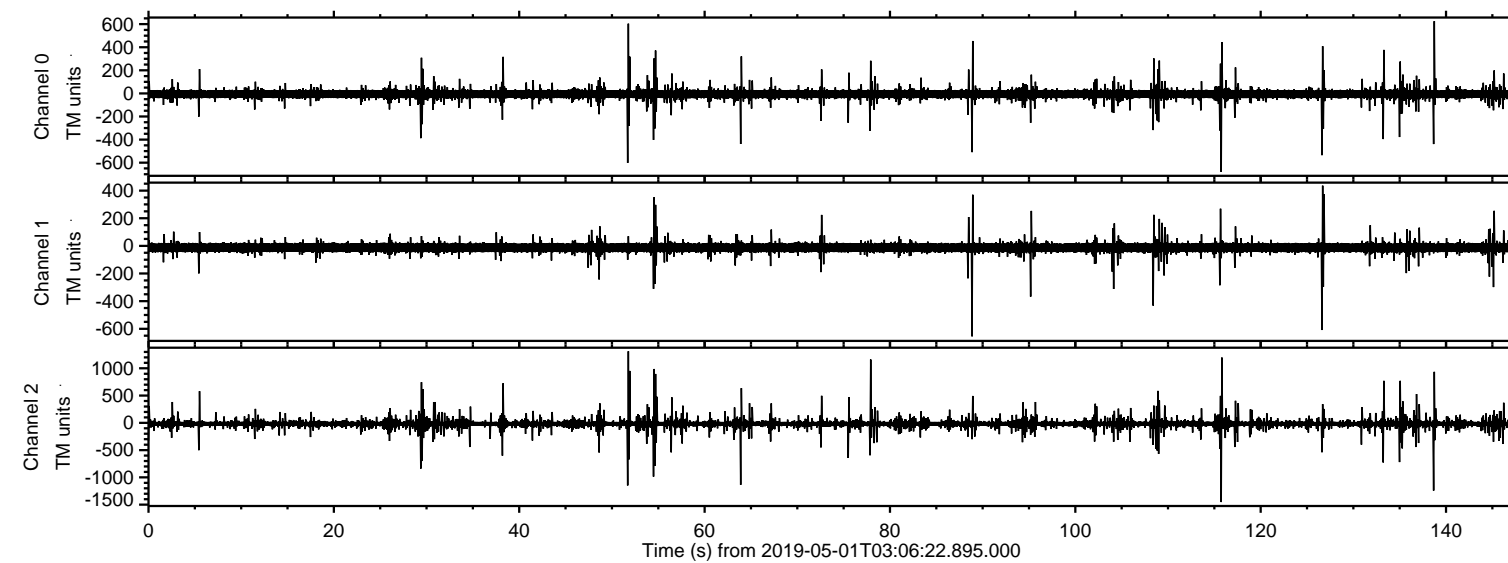


# ELMAVAN 3D WAVEFORMS (Measured data sampled at 50 kHz) 51000 packets of 144 samples from 2019-05-01T03:06:22.895.000.

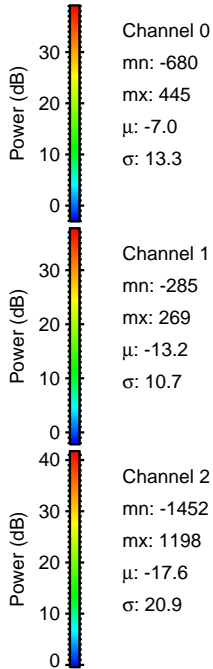
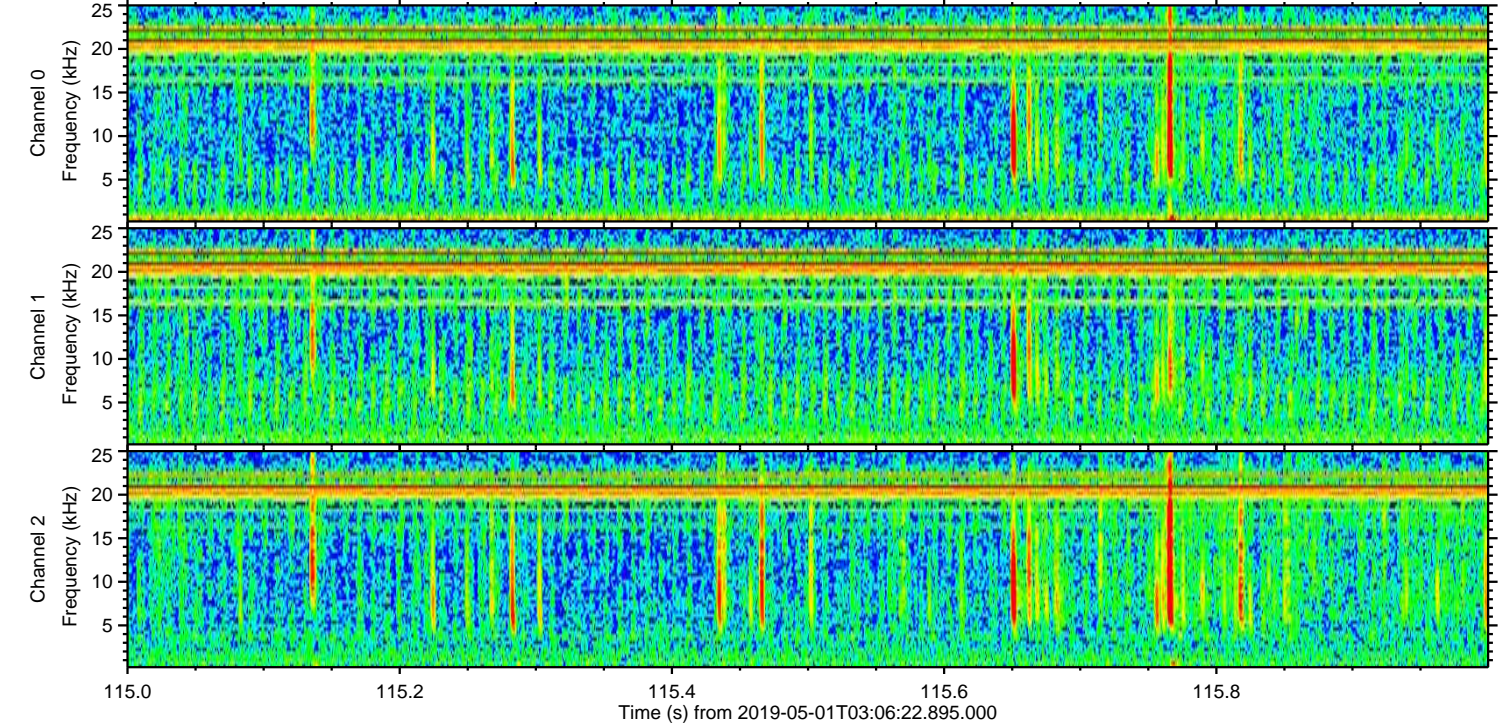
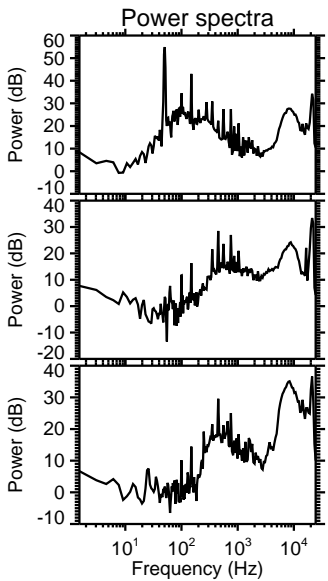
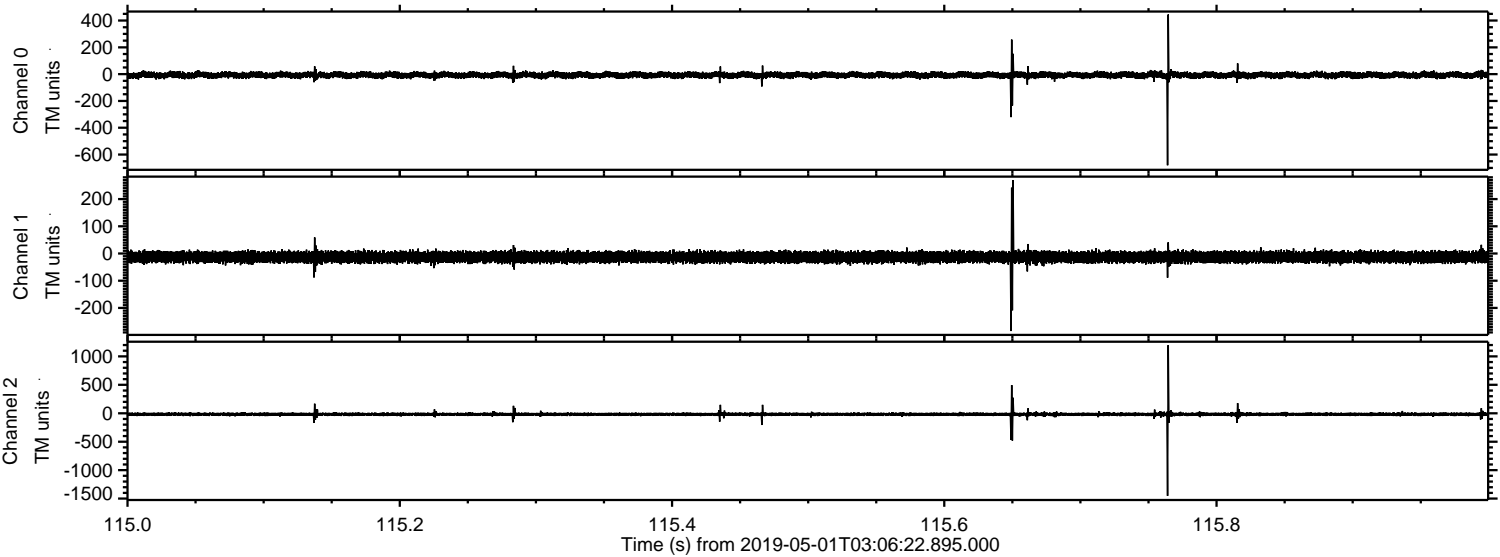
Processed Wed May 1 05:14:04 2019 by ELM ver.2012-10-06 from 001\_\_elm20190501\_030621\_\_dat00.bin





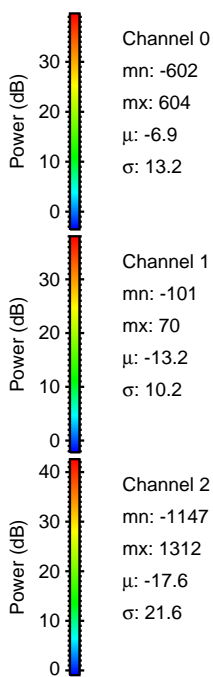
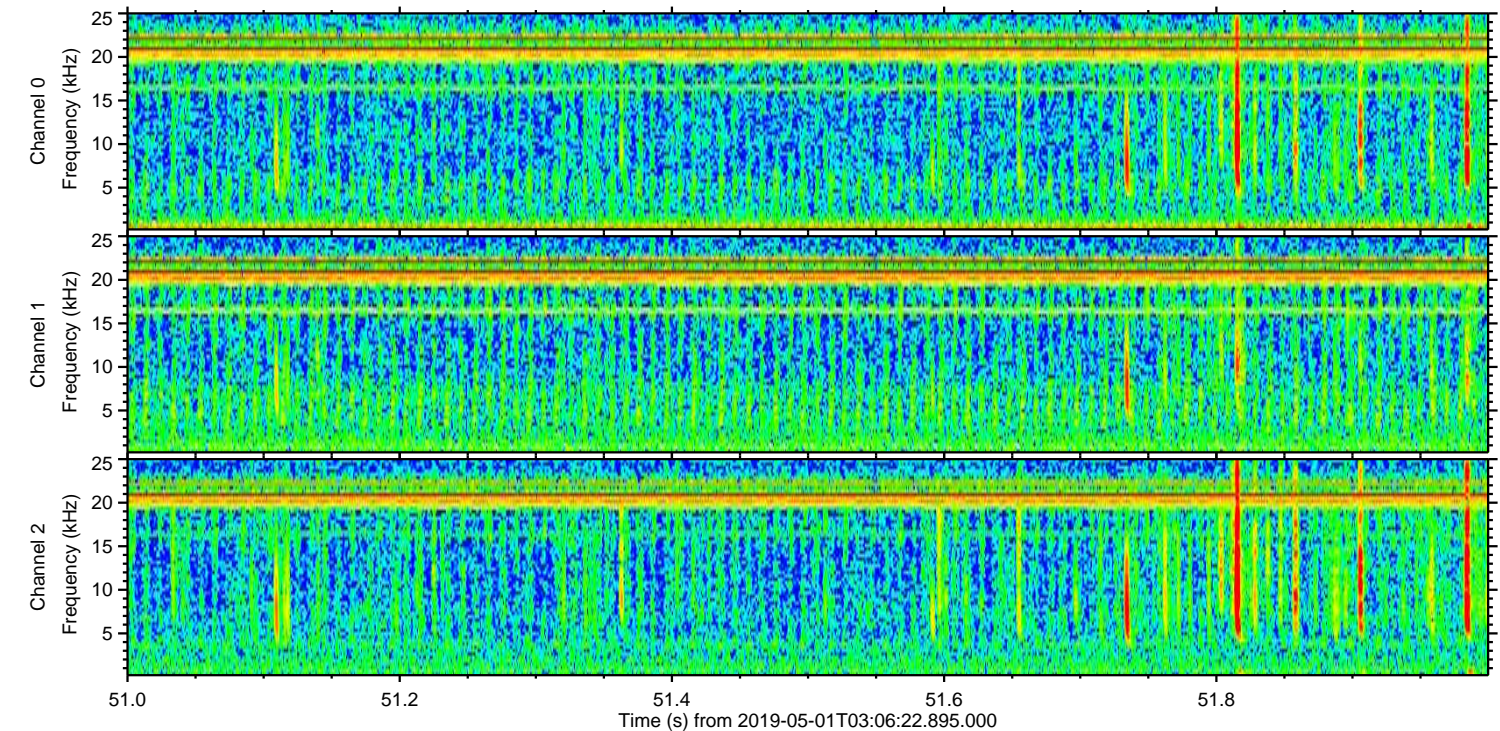
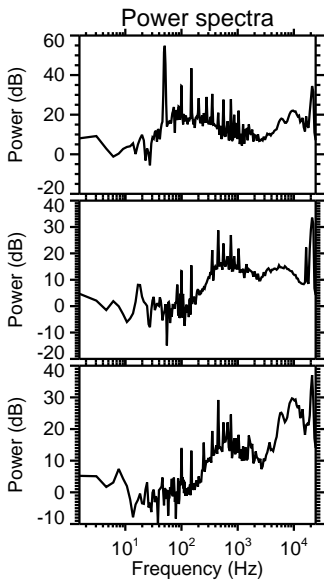
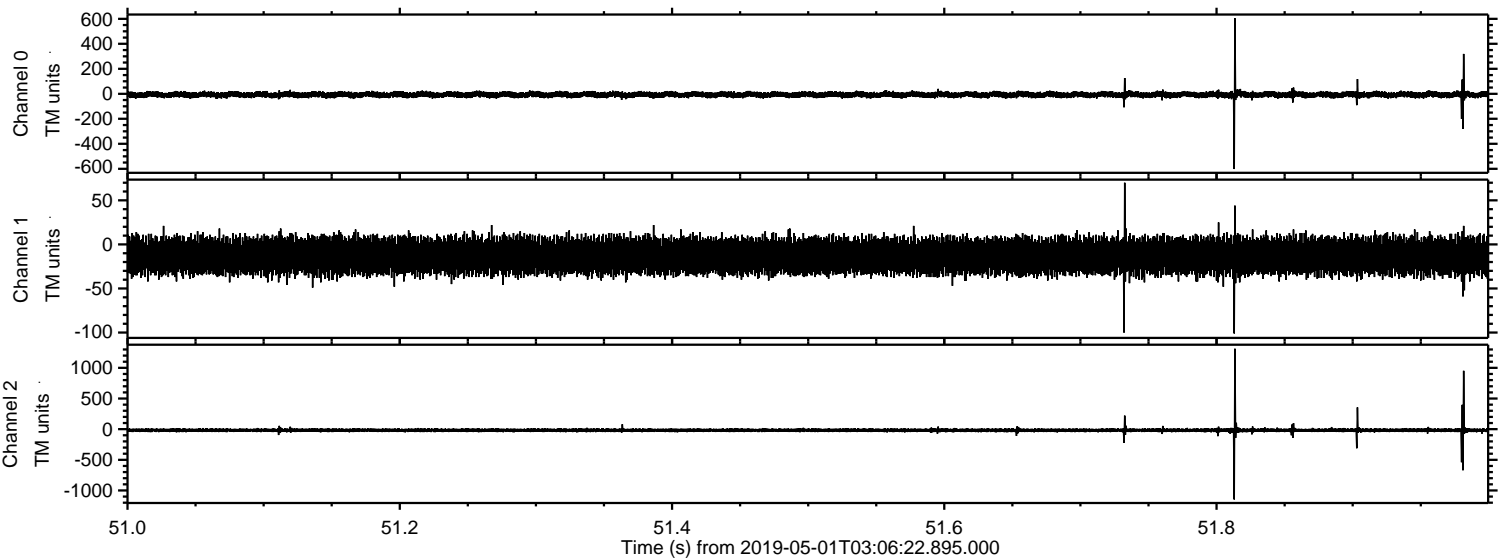
ELMAVAN 3D WAVEFORMS (Measured data sampled at 50 kHz) 51000 packets of 144 samples from 2019-05-01T03:06:22.895.000. Part 116/147

Processed Wed May 1 05:14:11 2019 by ELM ver.2012-10-06 from 001\_\_elm20190501\_030621\_\_dat00.bin





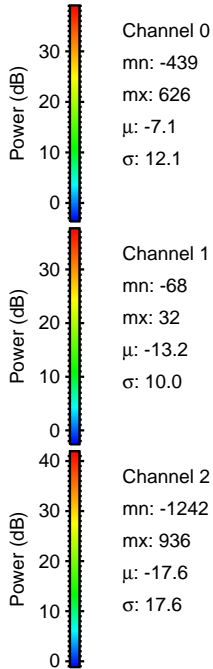
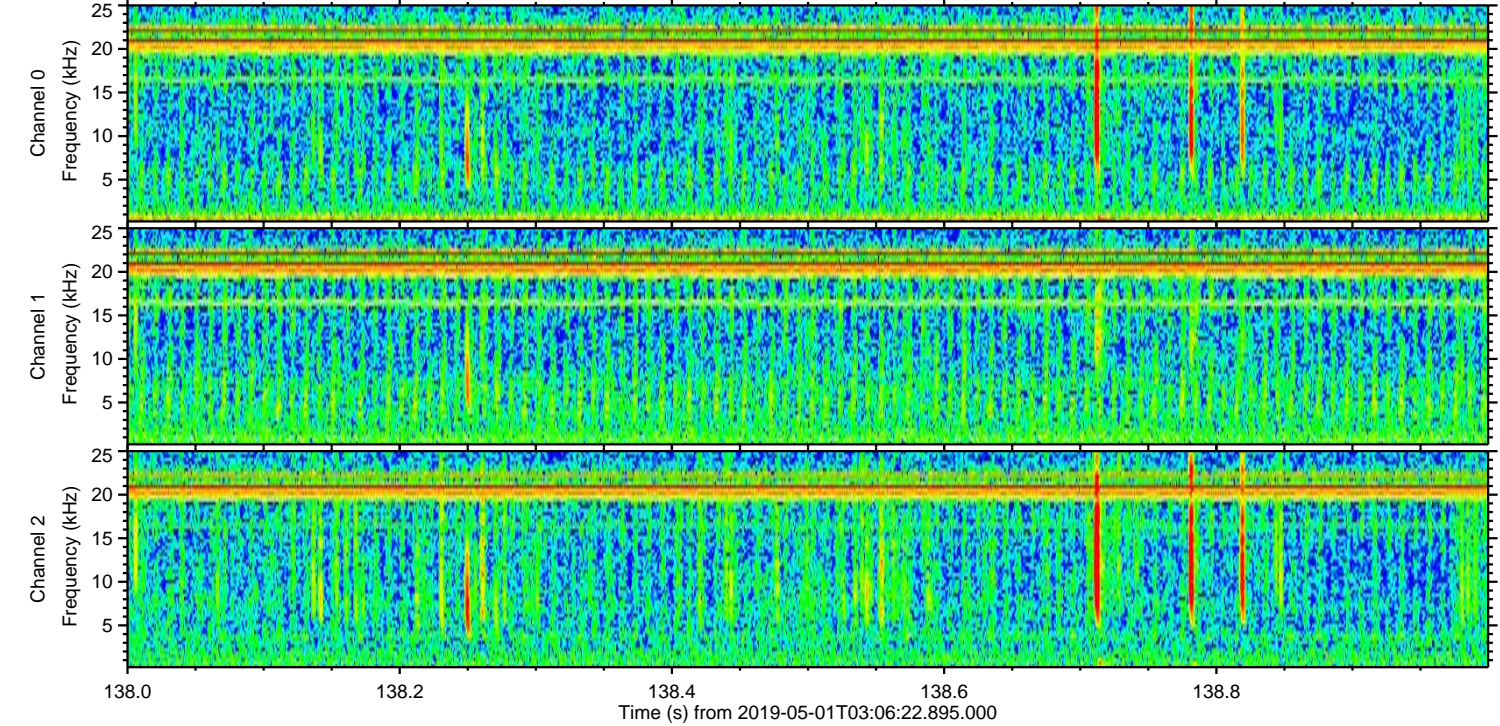
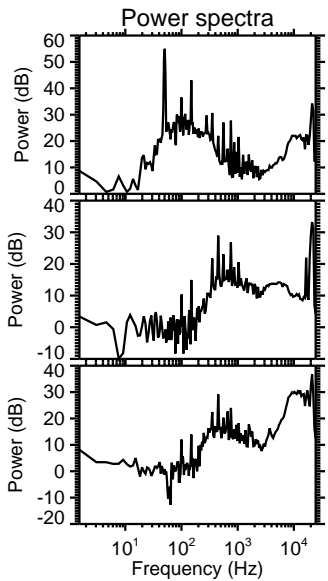
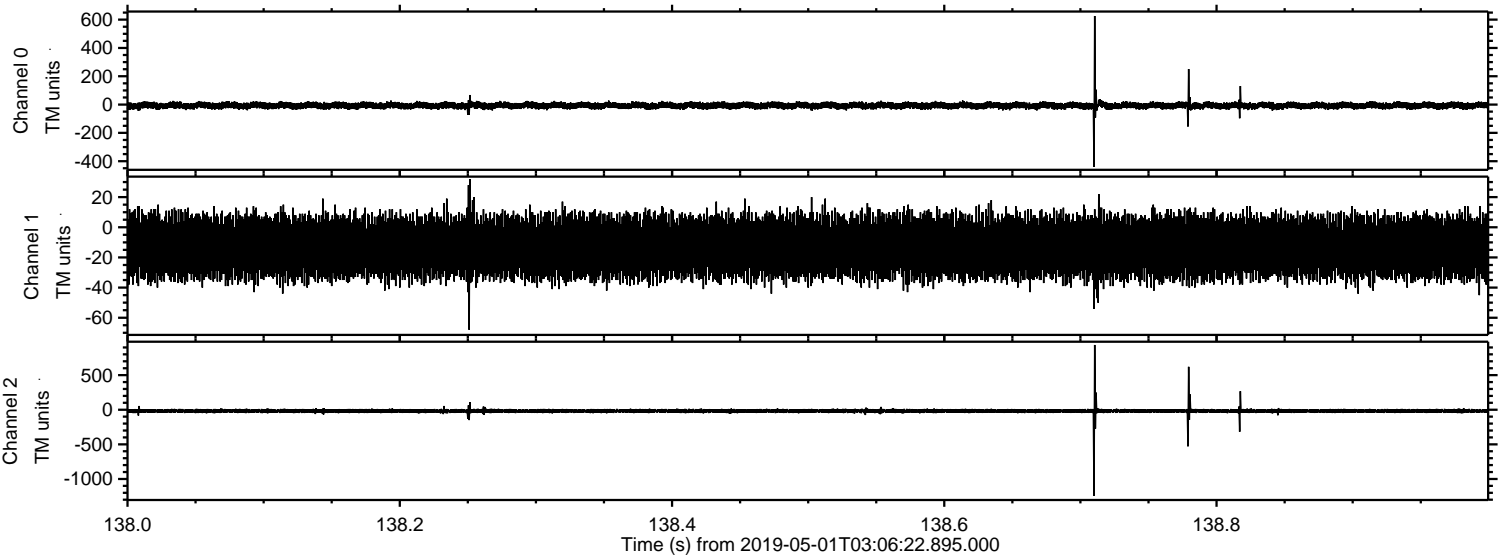
Processed Wed May 1 05:14:11 2019 by ELM ver.2012-10-06 from 001\_\_elm20190501\_030621\_\_dat00.bin





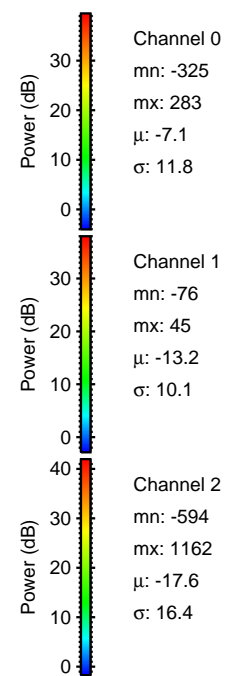
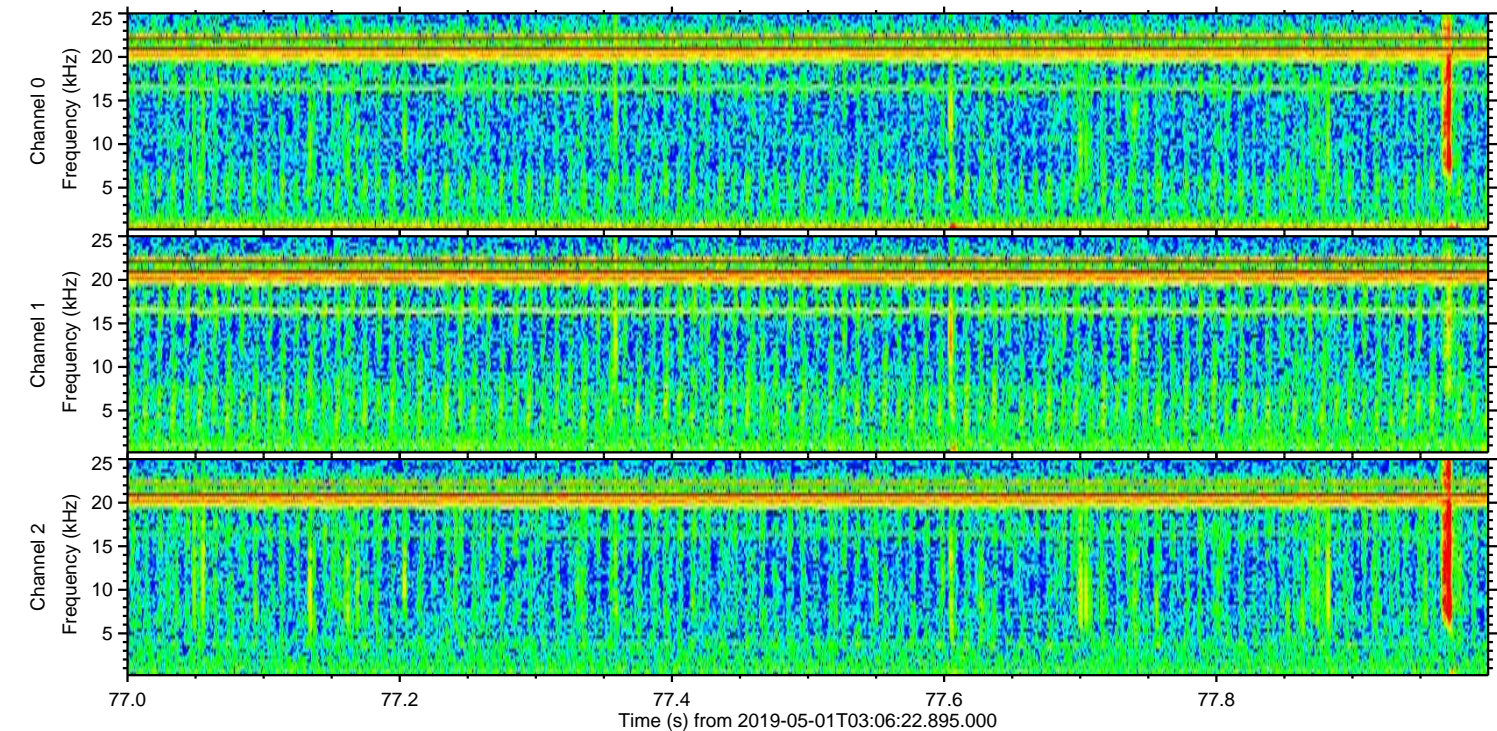
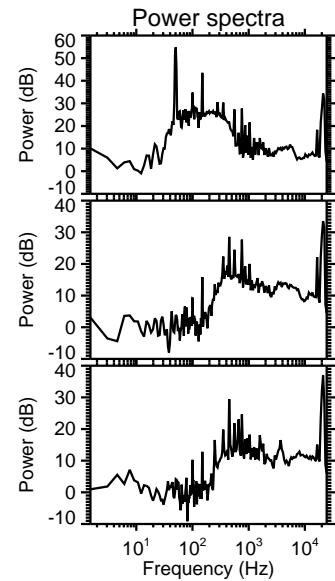
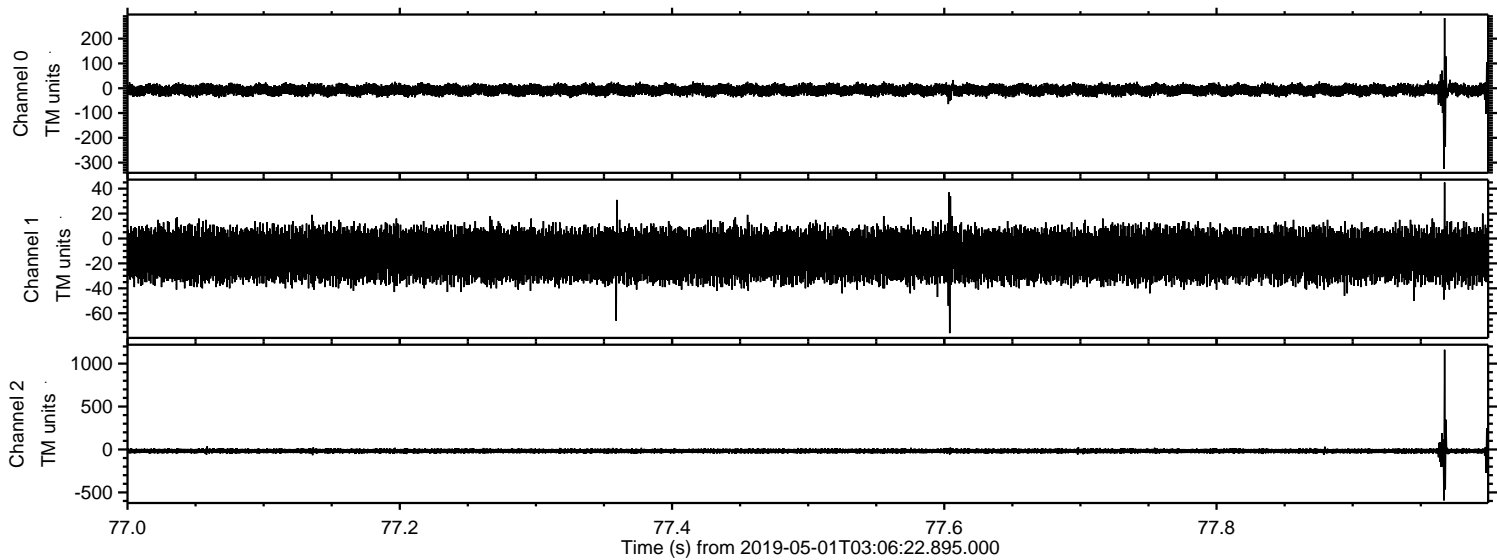
ELMAVAN 3D WAVEFORMS (Measured data sampled at 50 kHz) 51000 packets of 144 samples from 2019-05-01T03:06:22.895.000. Part 139/147

Processed Wed May 1 05:14:12 2019 by ELM ver.2012-10-06 from 001\_\_elm20190501\_030621\_\_dat00.bin



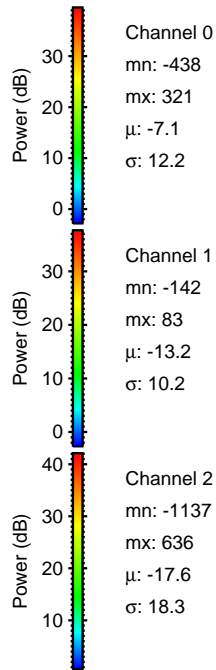
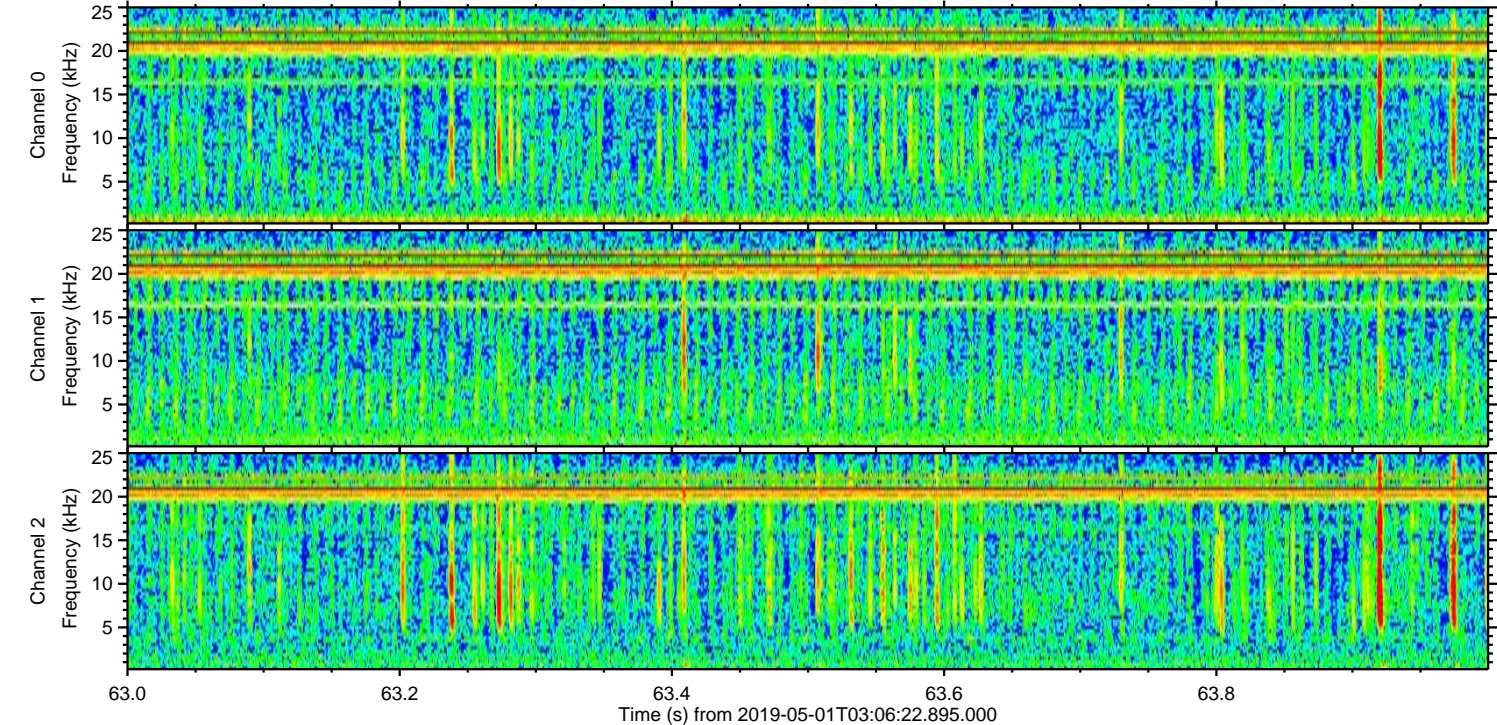
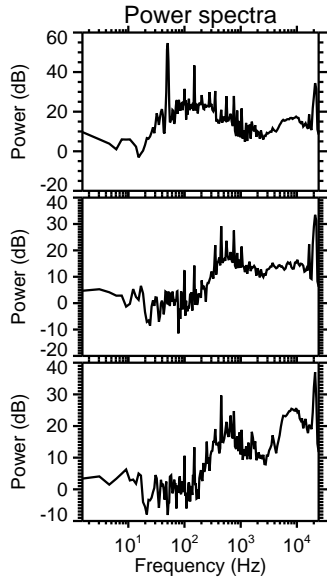
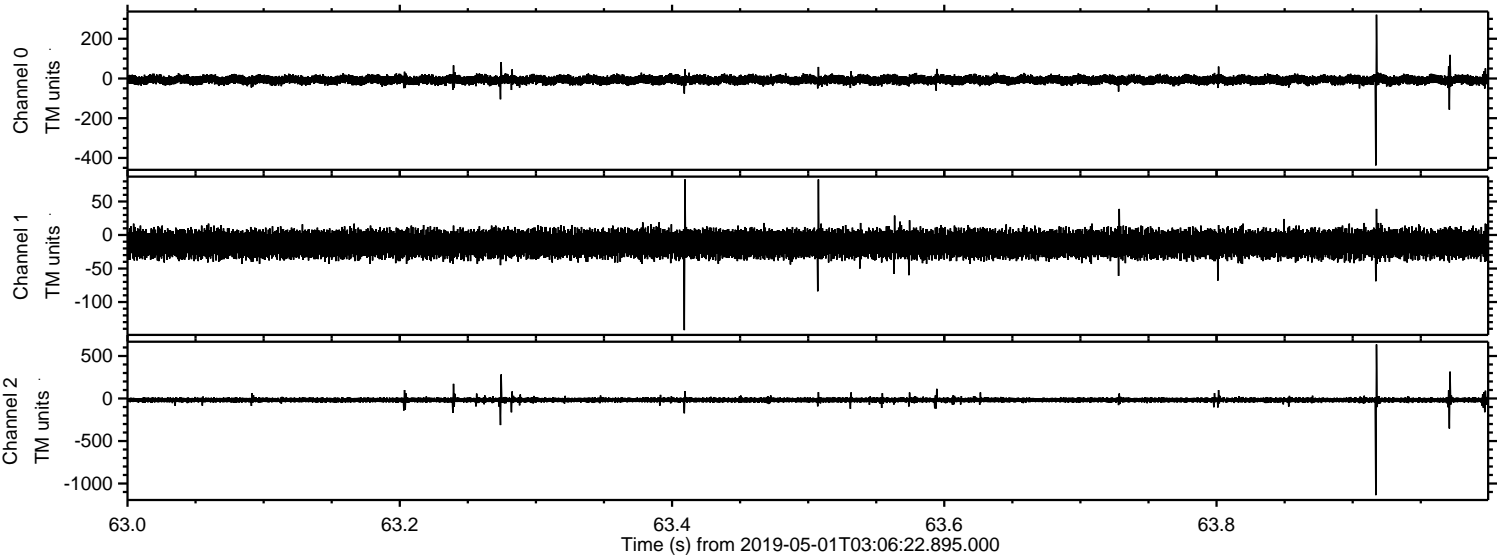


Processed Wed May 1 05:14:13 2019 by ELM ver.2012-10-06 from 001\_\_elm20190501\_030621\_\_dat00.bin



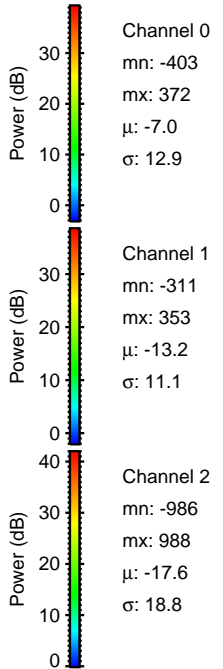
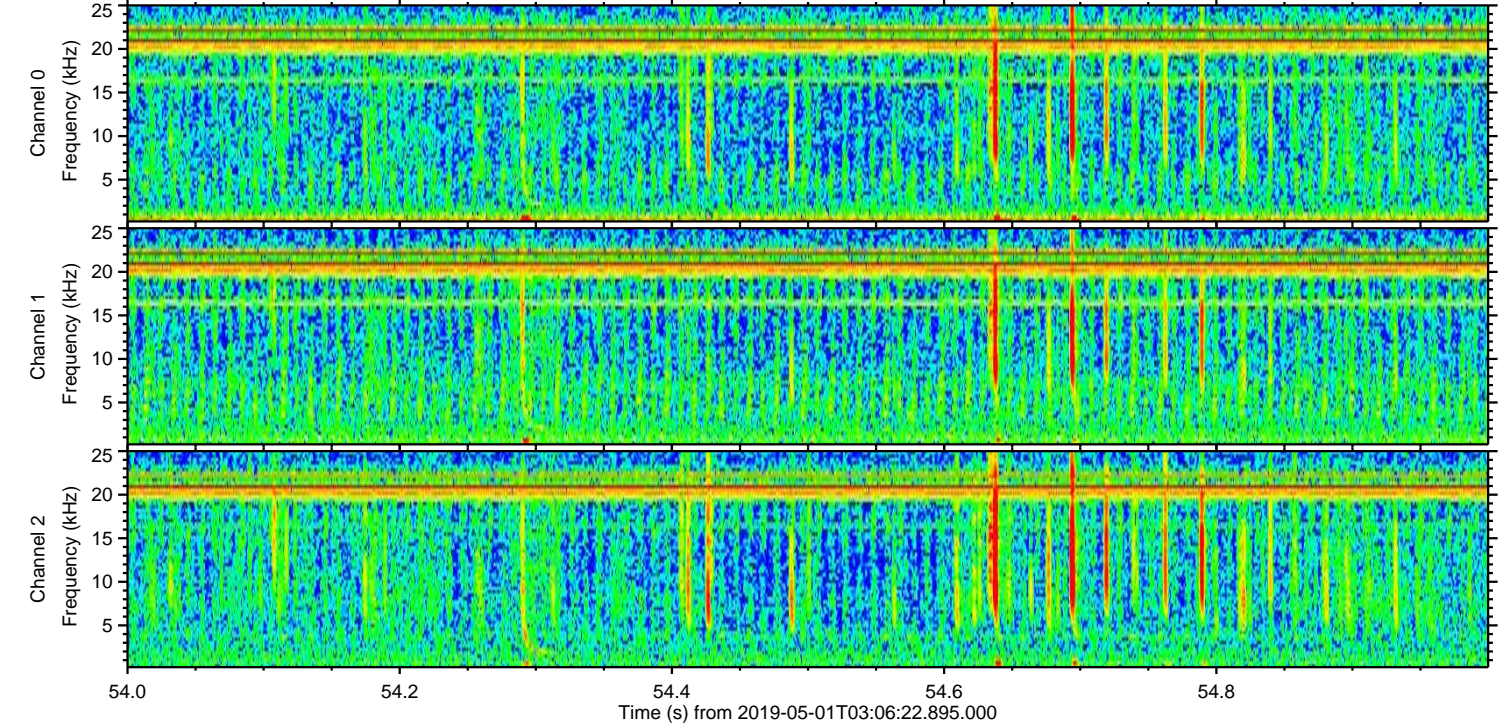
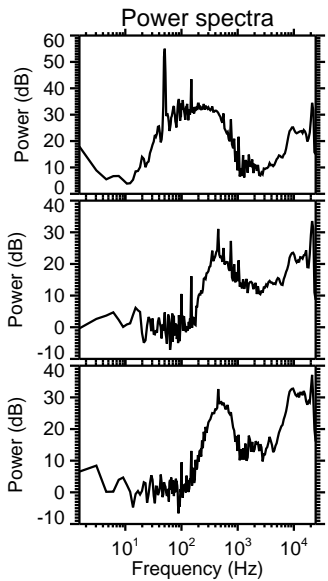
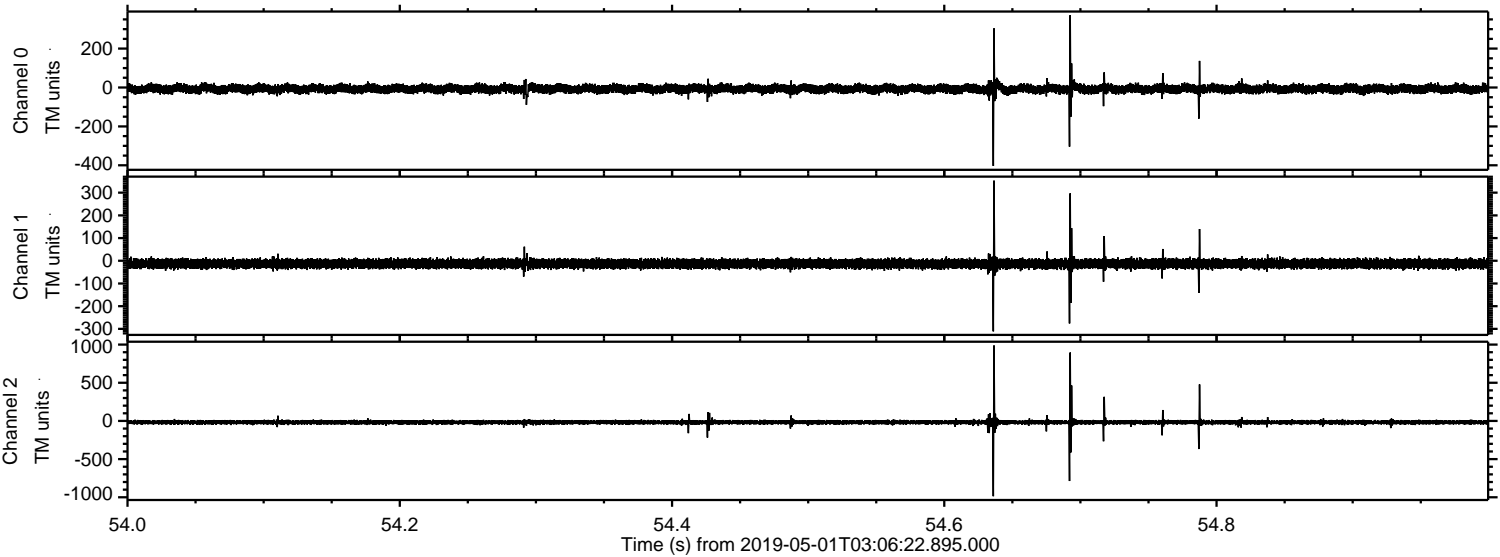


Processed Wed May 1 05:14:13 2019 by ELM ver.2012-10-06 from 001\_\_elm20190501\_030621\_\_dat00.bin



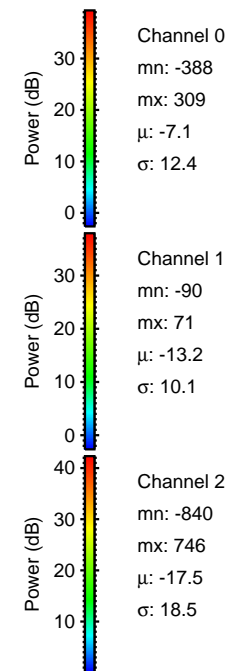
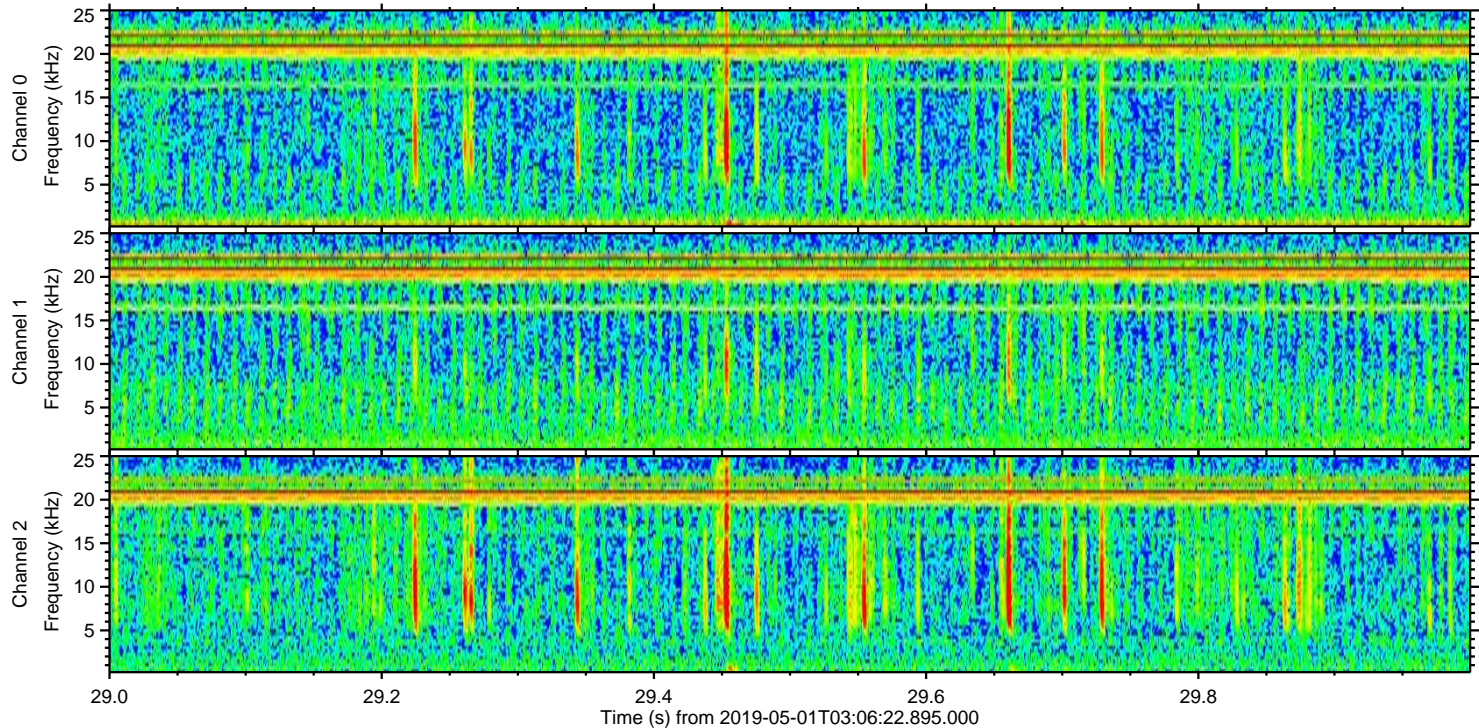
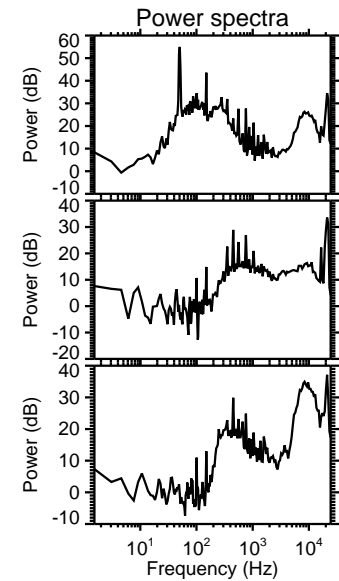
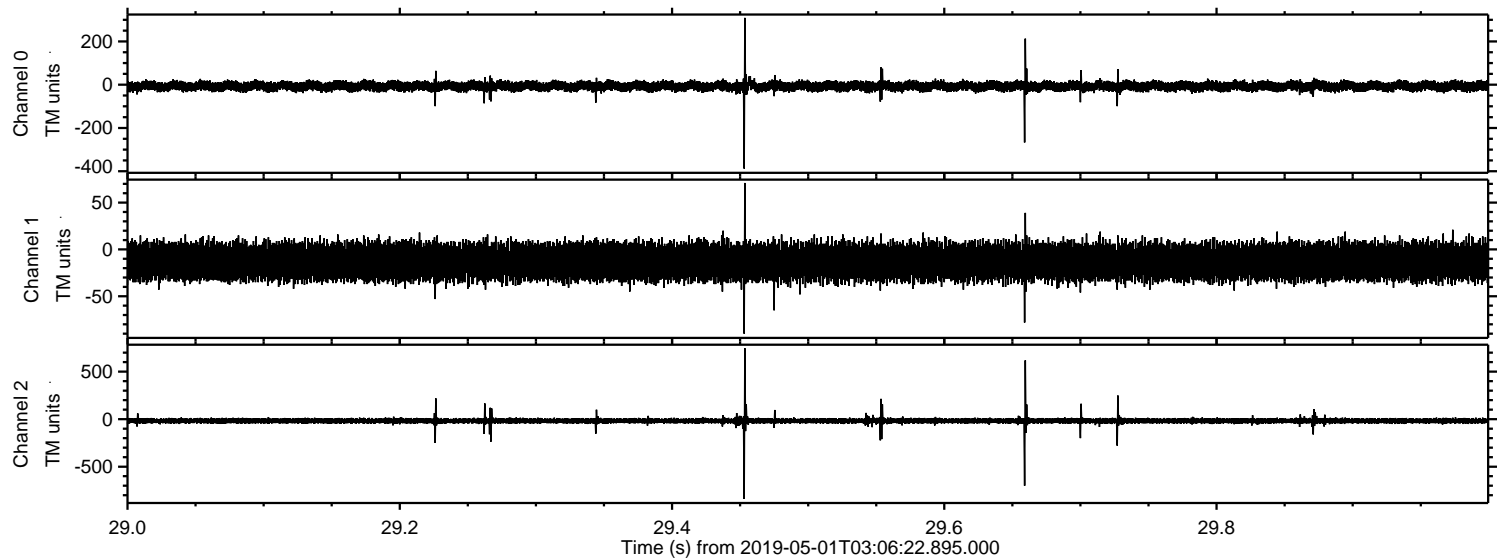


Processed Wed May 1 05:14:14 2019 by ELM ver.2012-10-06 from 001\_\_elm20190501\_030621\_\_dat00.bin



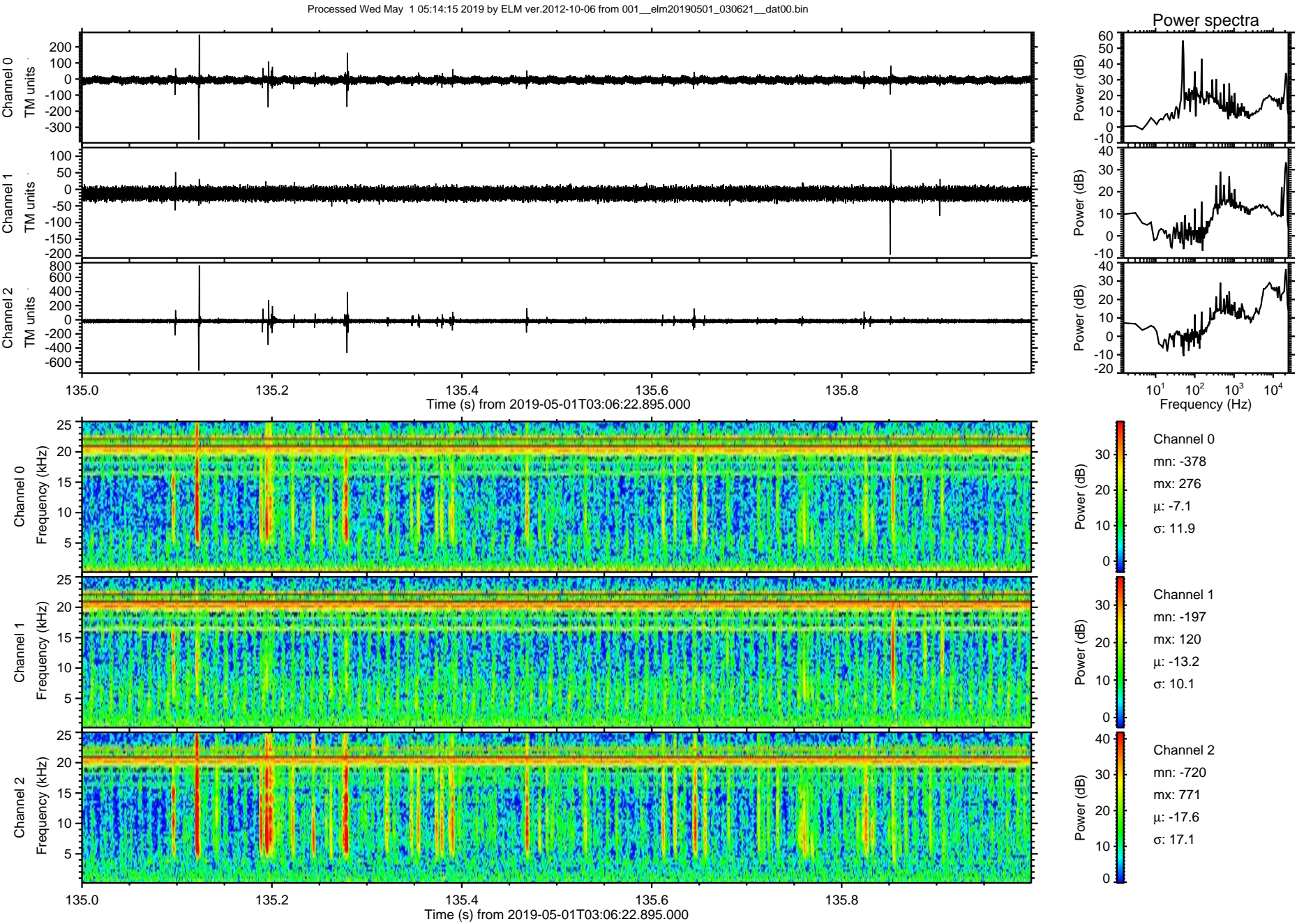


Processed Wed May 1 05:14:15 2019 by ELM ver.2012-10-06 from 001\_\_elm20190501\_030621\_\_dat00.bin

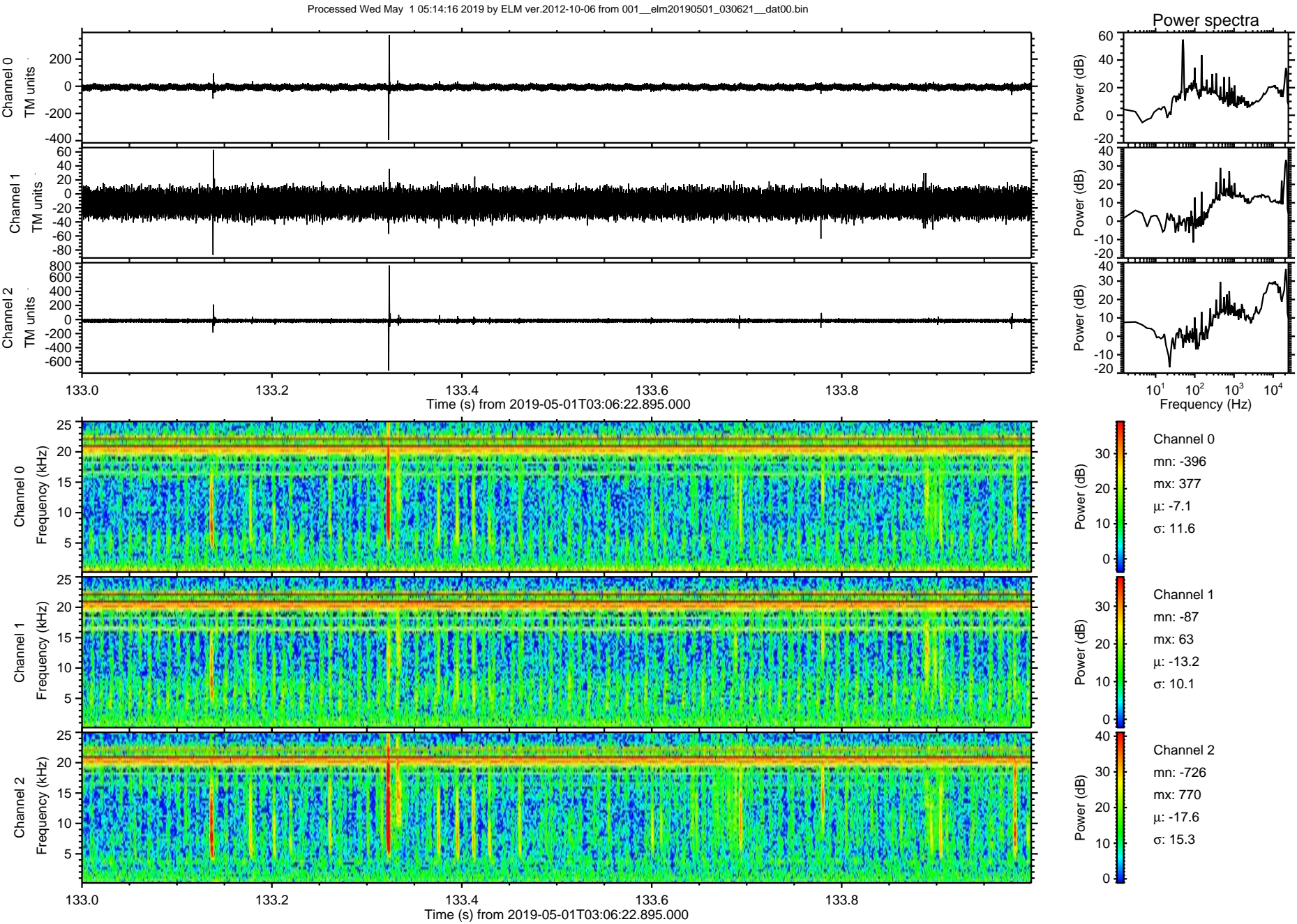




ELMAVAN 3D WAVEFORMS (Measured data sampled at 50 kHz) 51000 packets of 144 samples from 2019-05-01T03:06:22.895.000. Part 136/147









Processed Wed May 1 05:14:16 2019 by ELM ver.2012-10-06 from 001\_\_elm20190501\_030621\_\_dat00.bin

