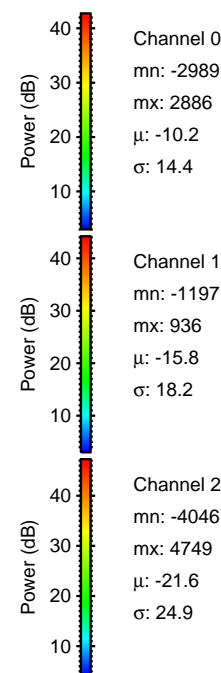
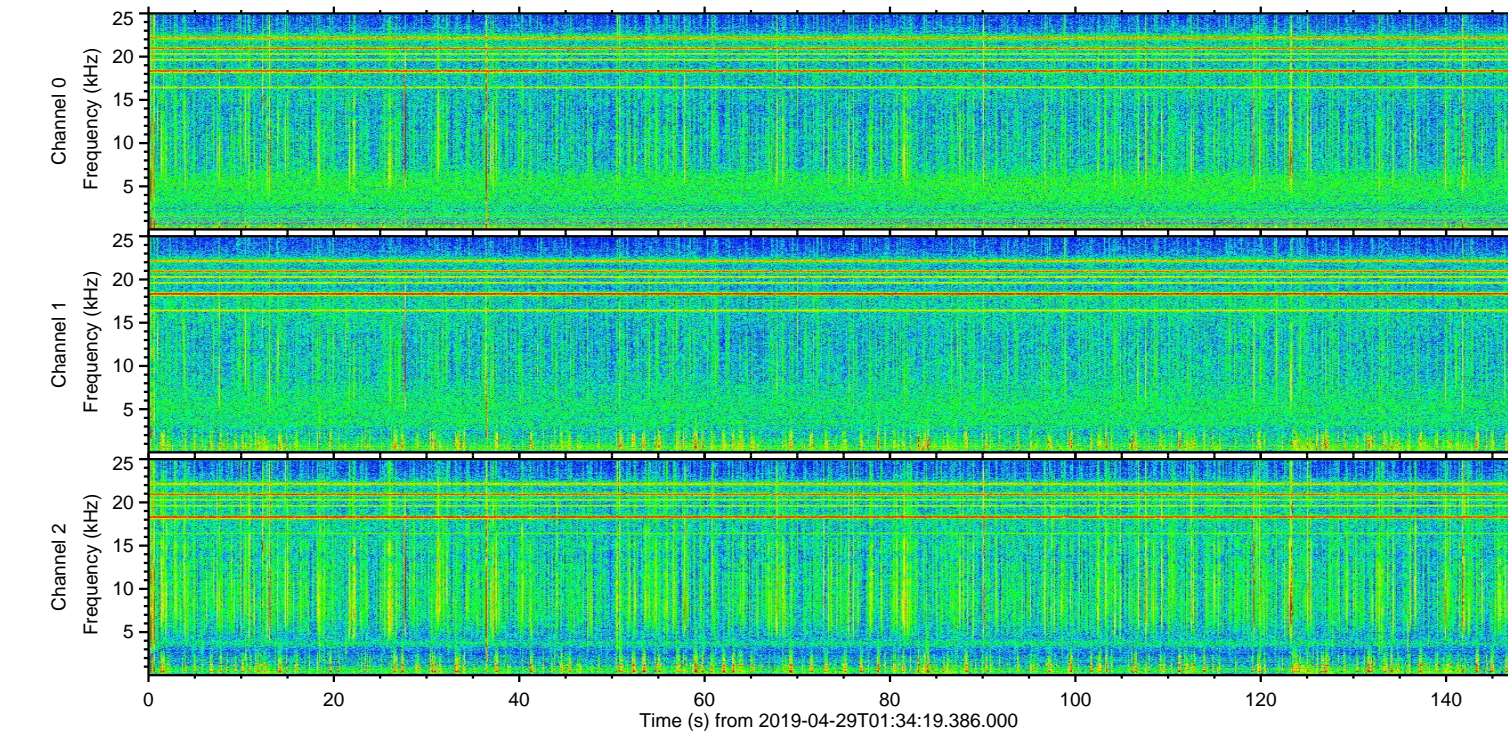
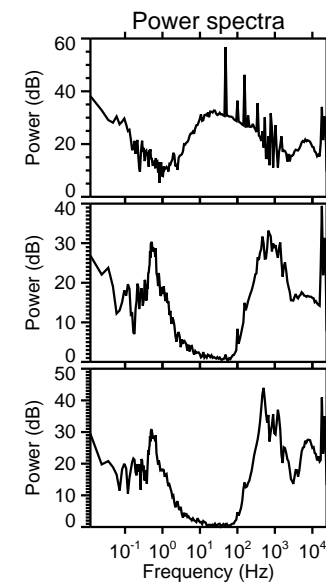
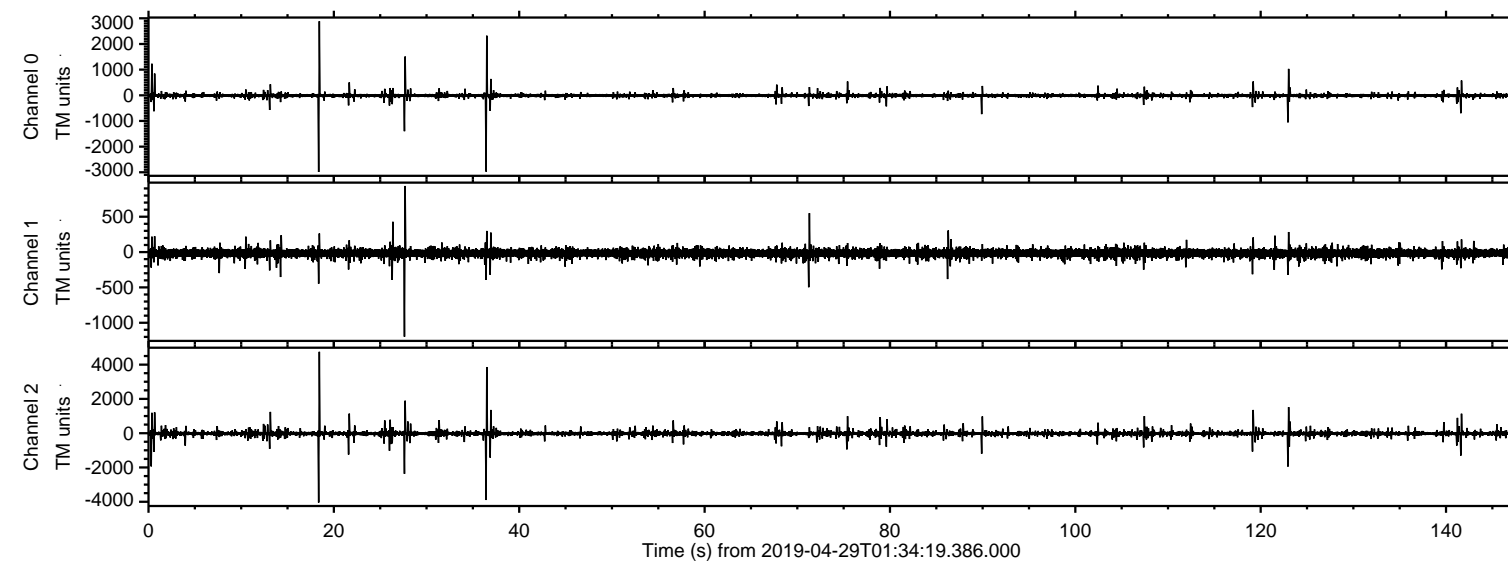
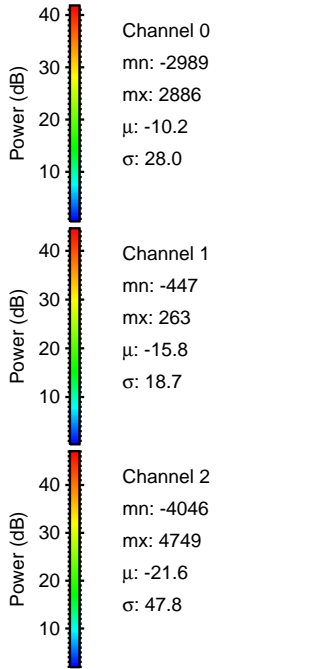
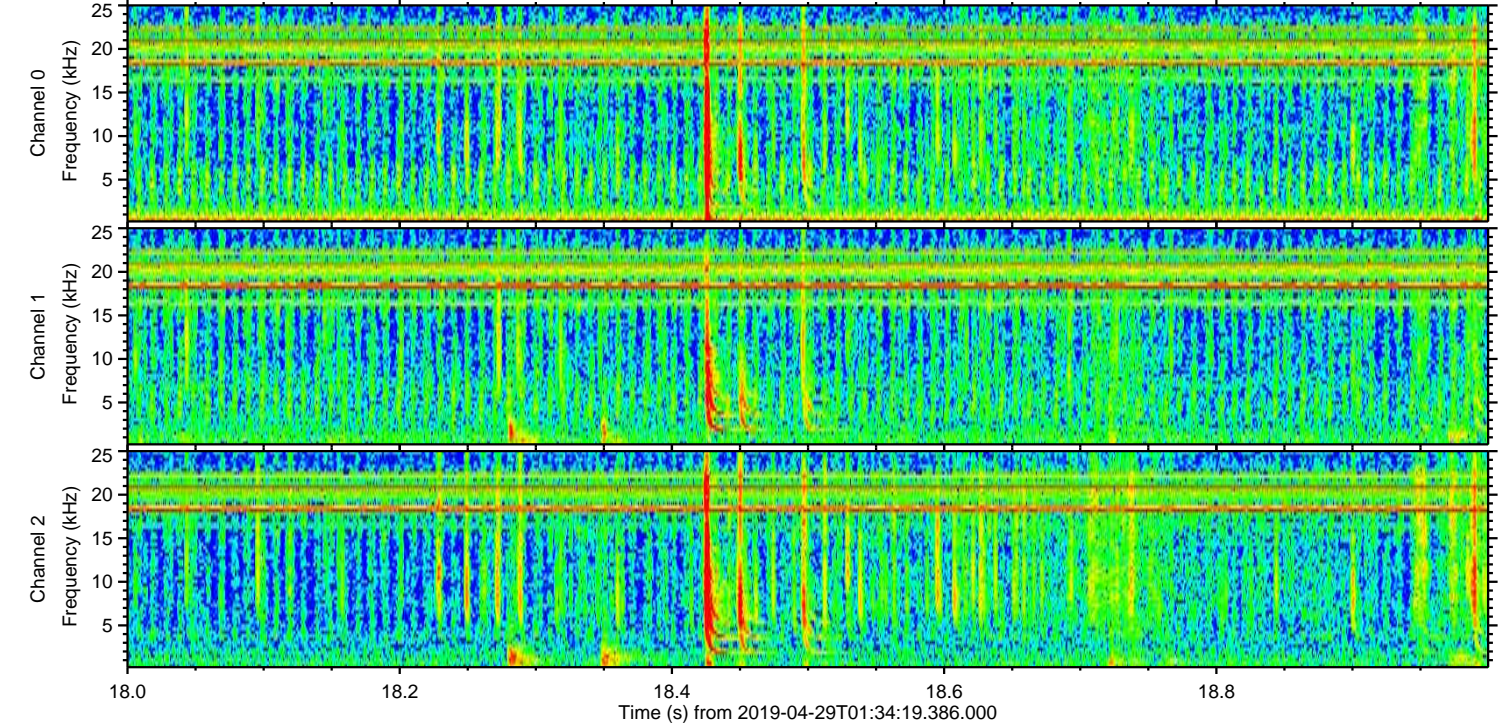
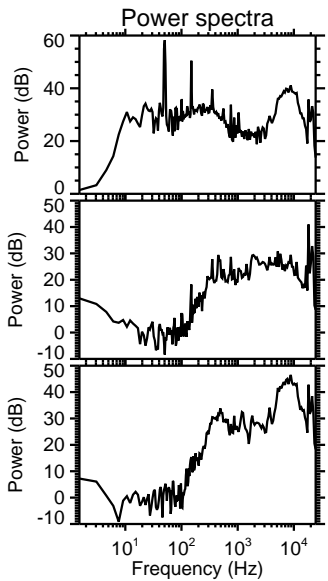
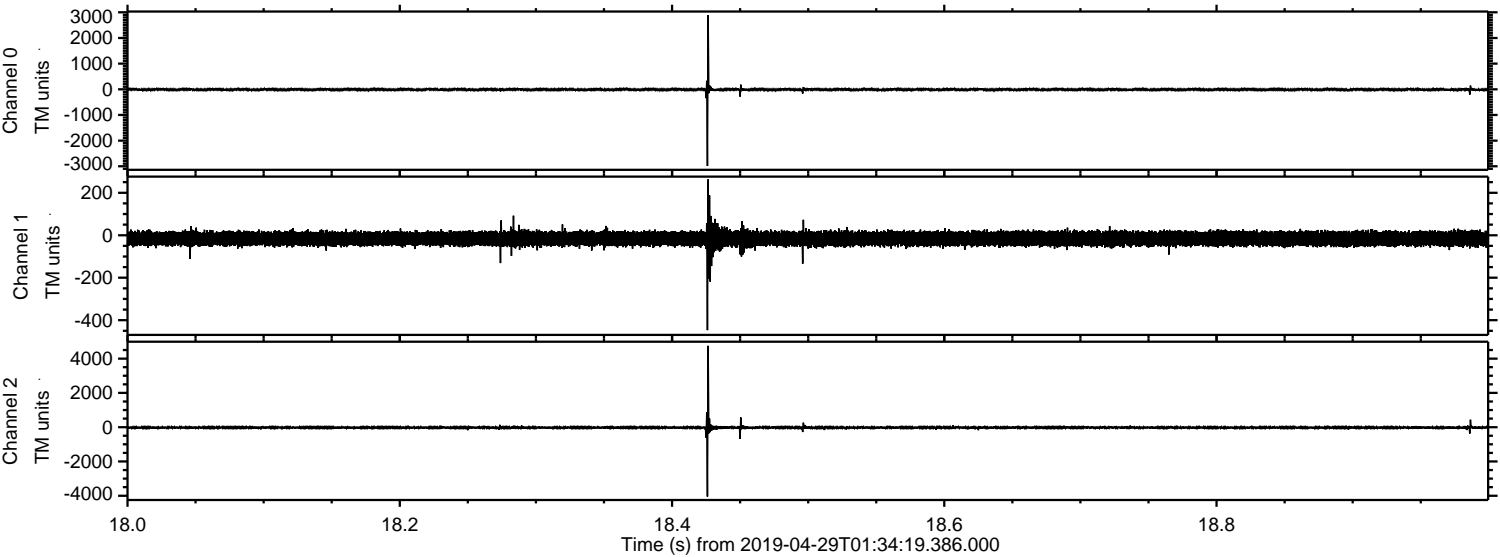


ELMAVAN 3D WAVEFORMS (Measured data sampled at 50 kHz) 51000 packets of 144 samples from 2019-04-29T01:34:19.386.000.

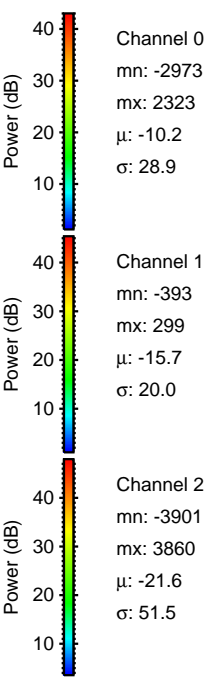
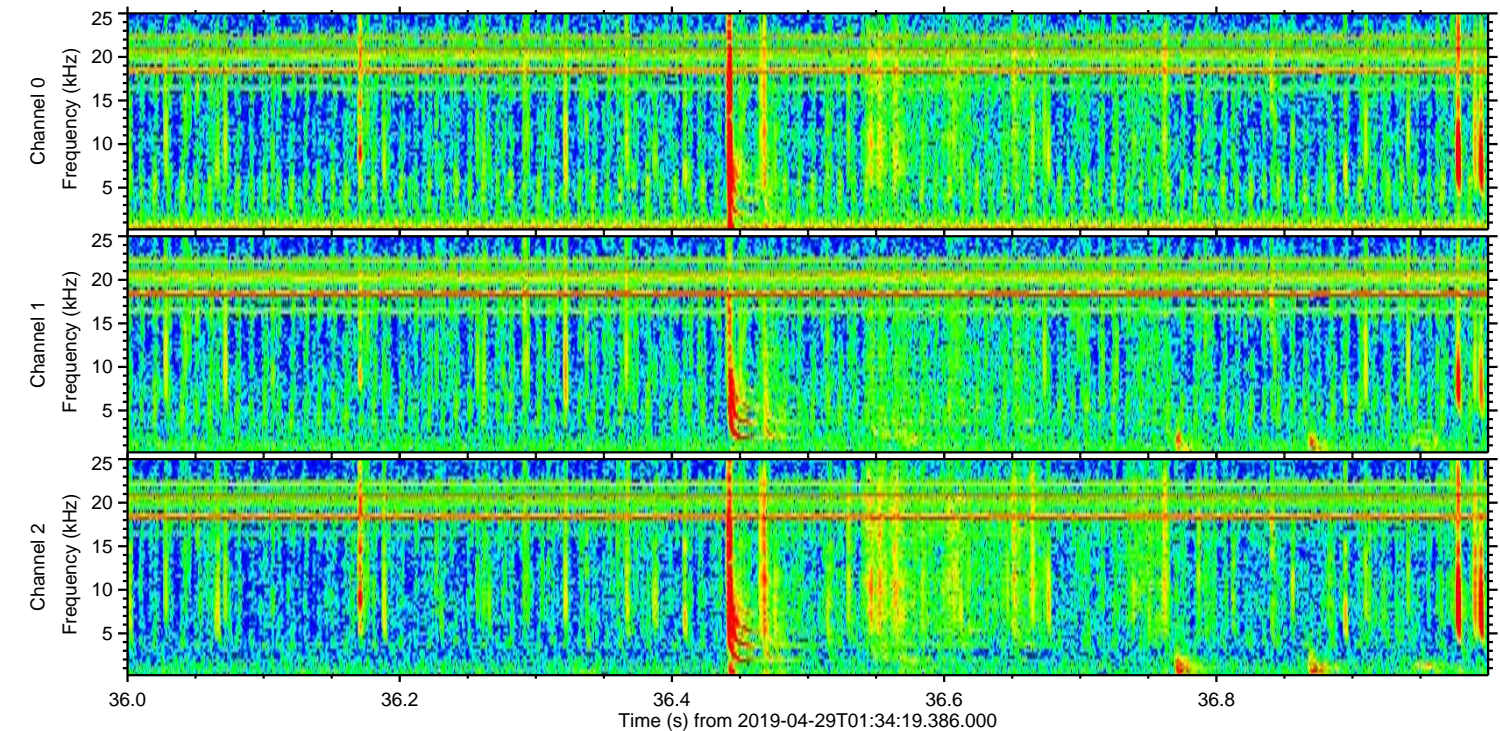
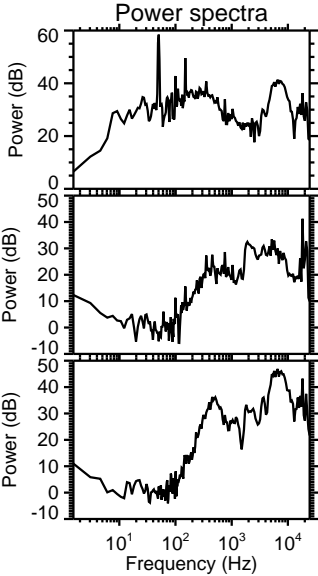
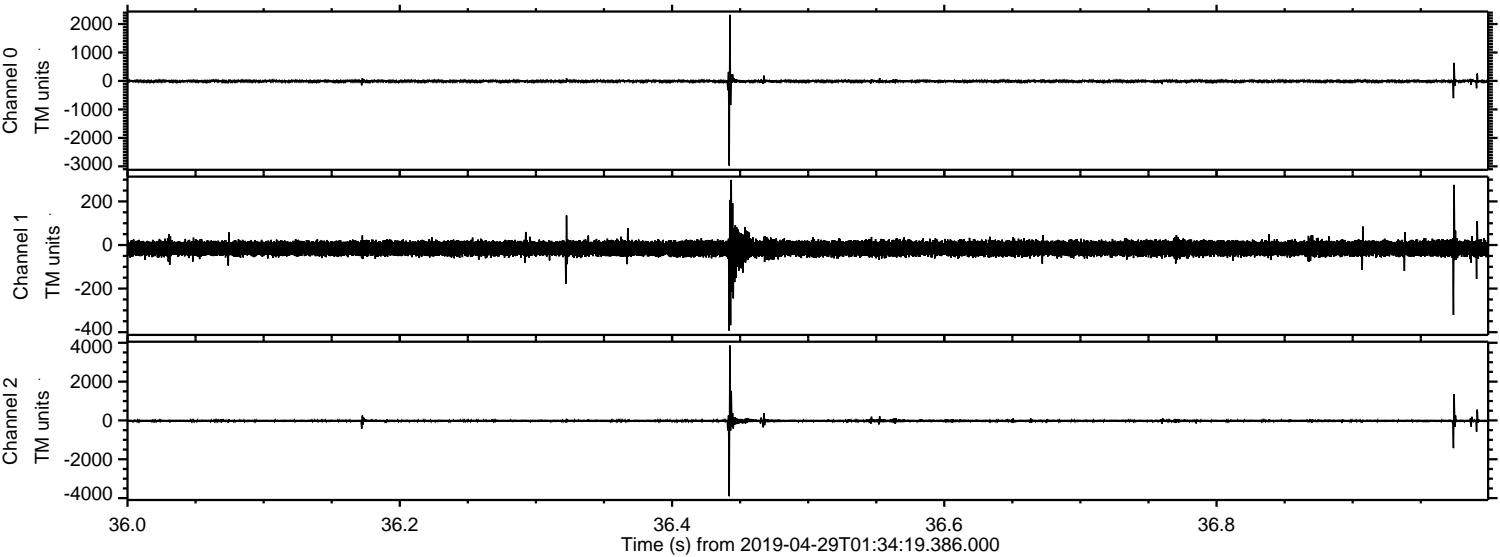
Processed Mon Apr 29 03:42:09 2019 by ELM ver.2012-10-06 from 001__elm20190429_013418__dat00.bin



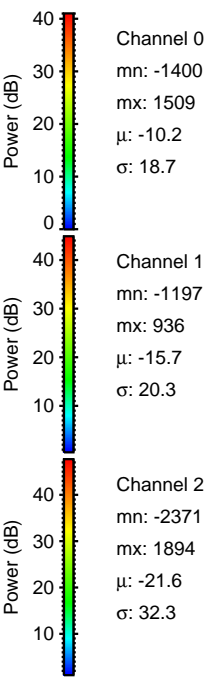
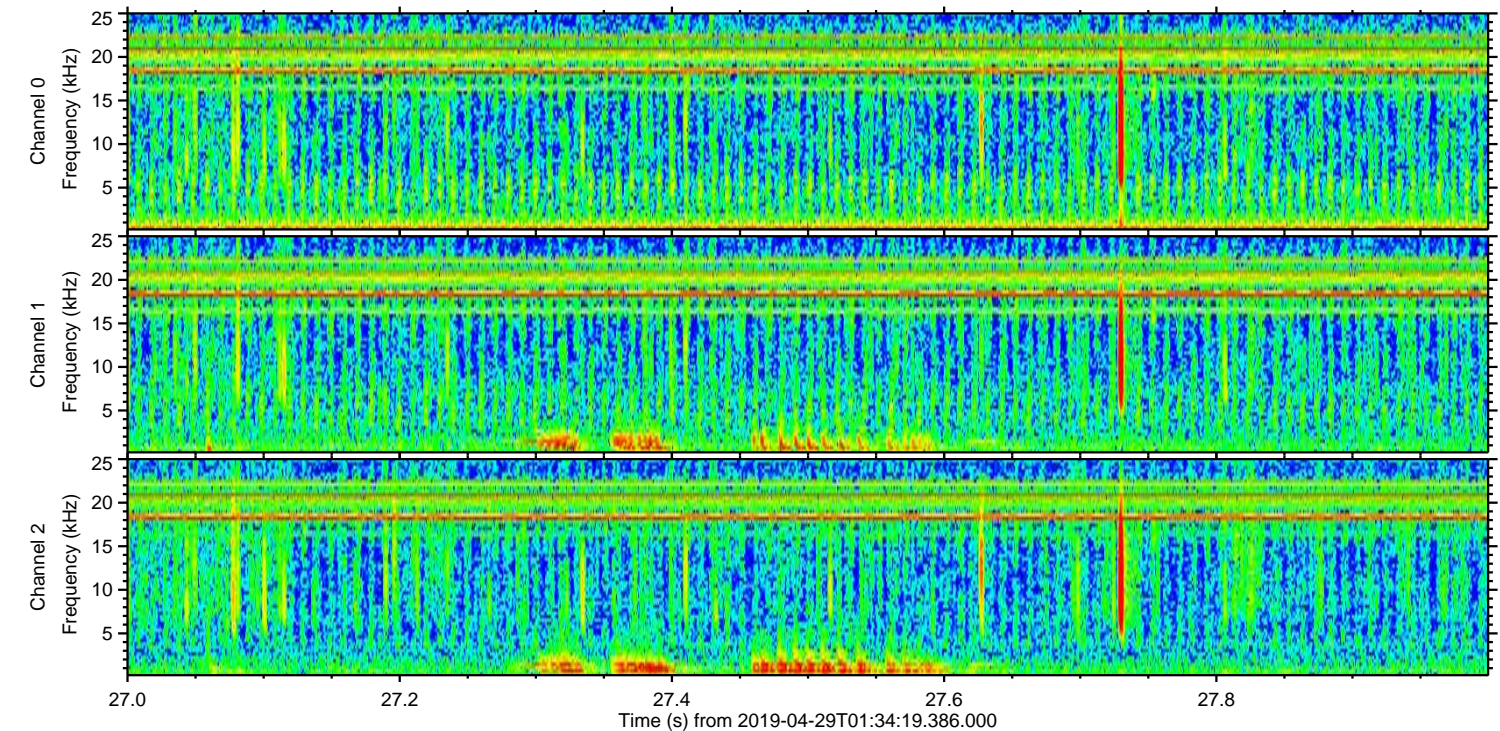
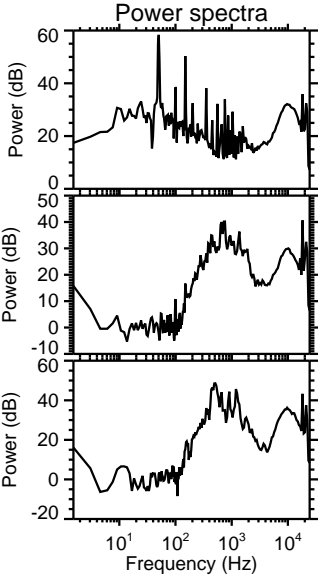
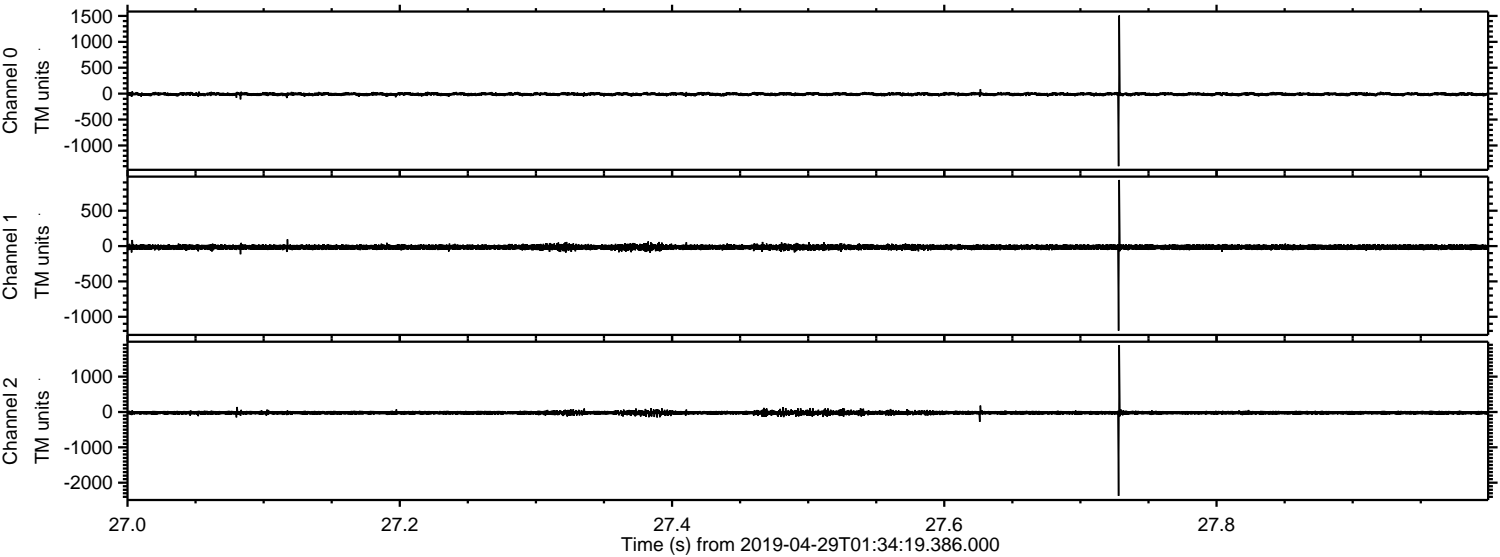
Processed Mon Apr 29 03:42:15 2019 by ELM ver.2012-10-06 from 001__elm20190429_013418__dat00.bin



Processed Mon Apr 29 03:42:16 2019 by ELM ver.2012-10-06 from 001__elm20190429_013418__dat00.bin

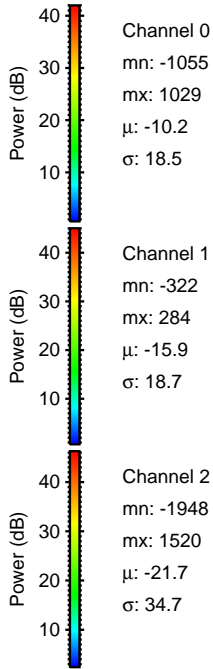
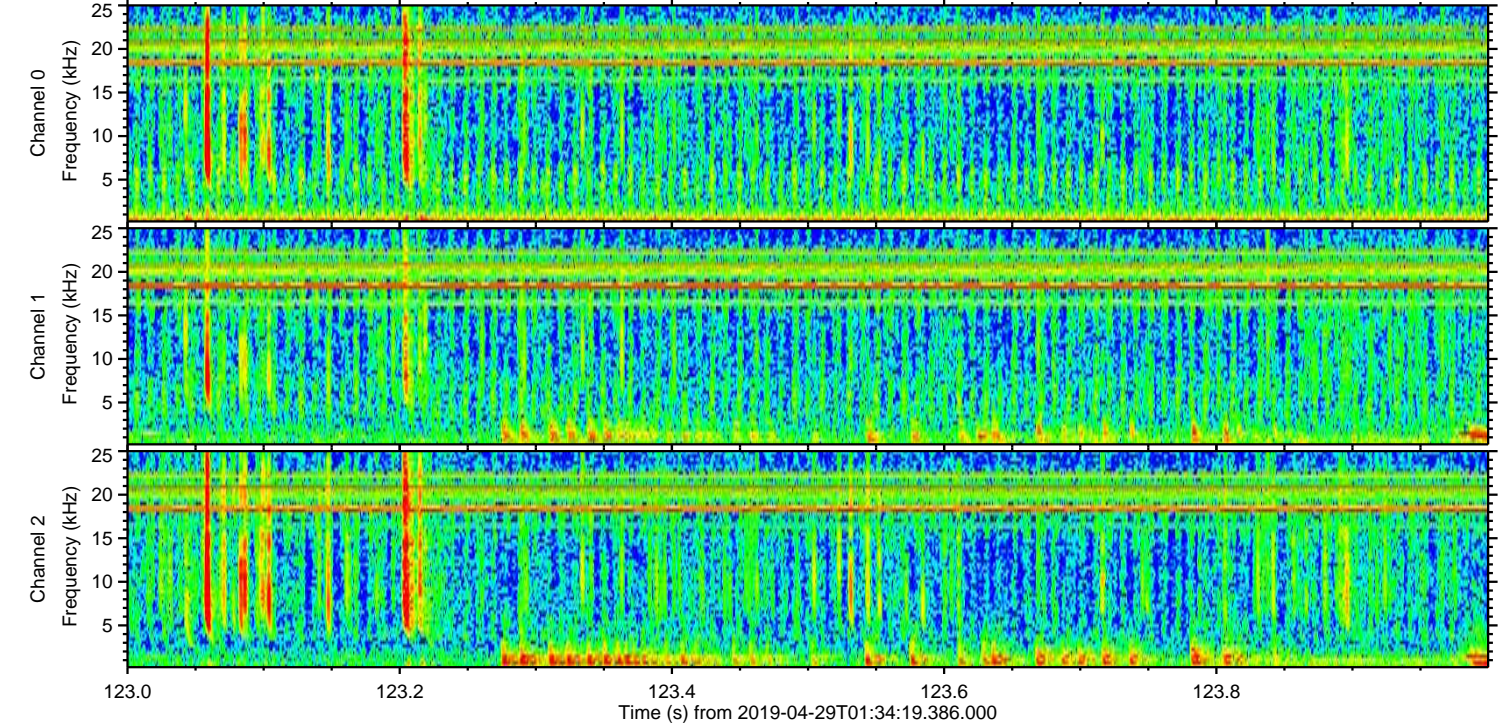
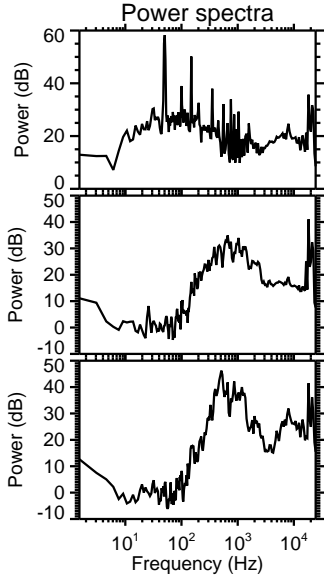
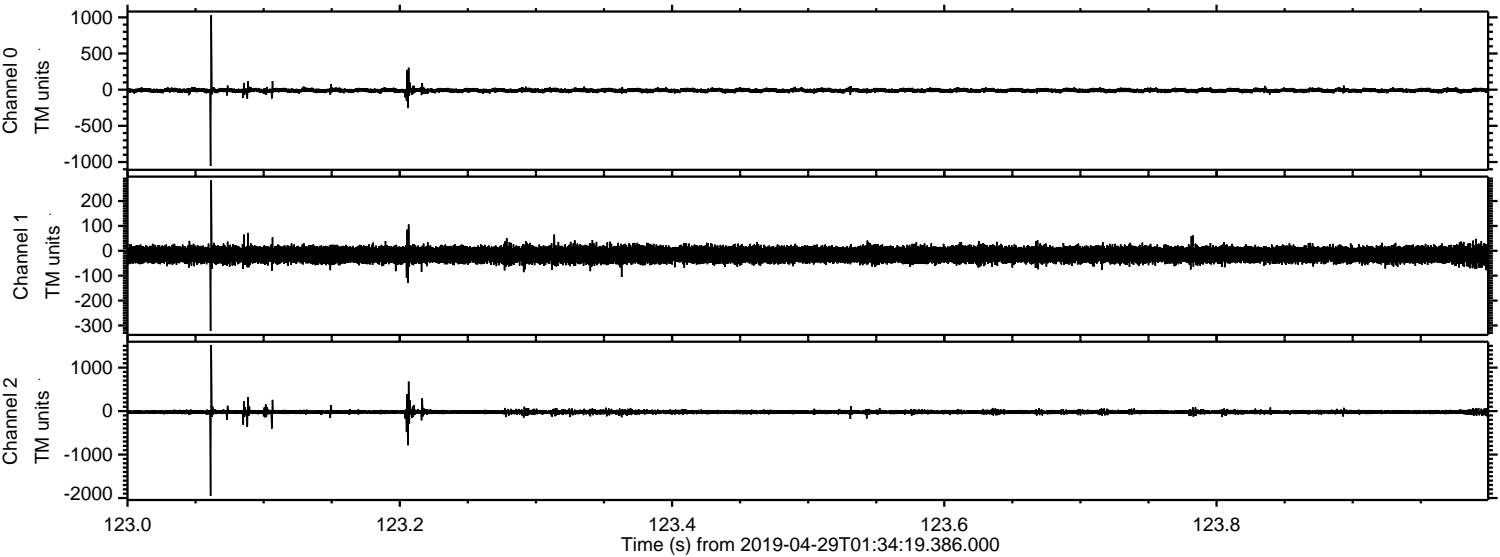


Processed Mon Apr 29 03:42:17 2019 by ELM ver.2012-10-06 from 001__elm20190429_013418__dat00.bin



ELMAVAN 3D WAVEFORMS (Measured data sampled at 50 kHz) 51000 packets of 144 samples from 2019-04-29T01:34:19.386.000. Part 124/147

Processed Mon Apr 29 03:42:17 2019 by ELM ver.2012-10-06 from 001__elm20190429_013418__dat00.bin



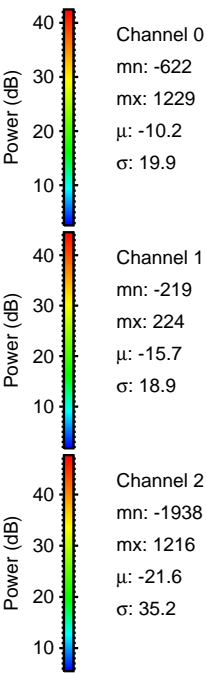
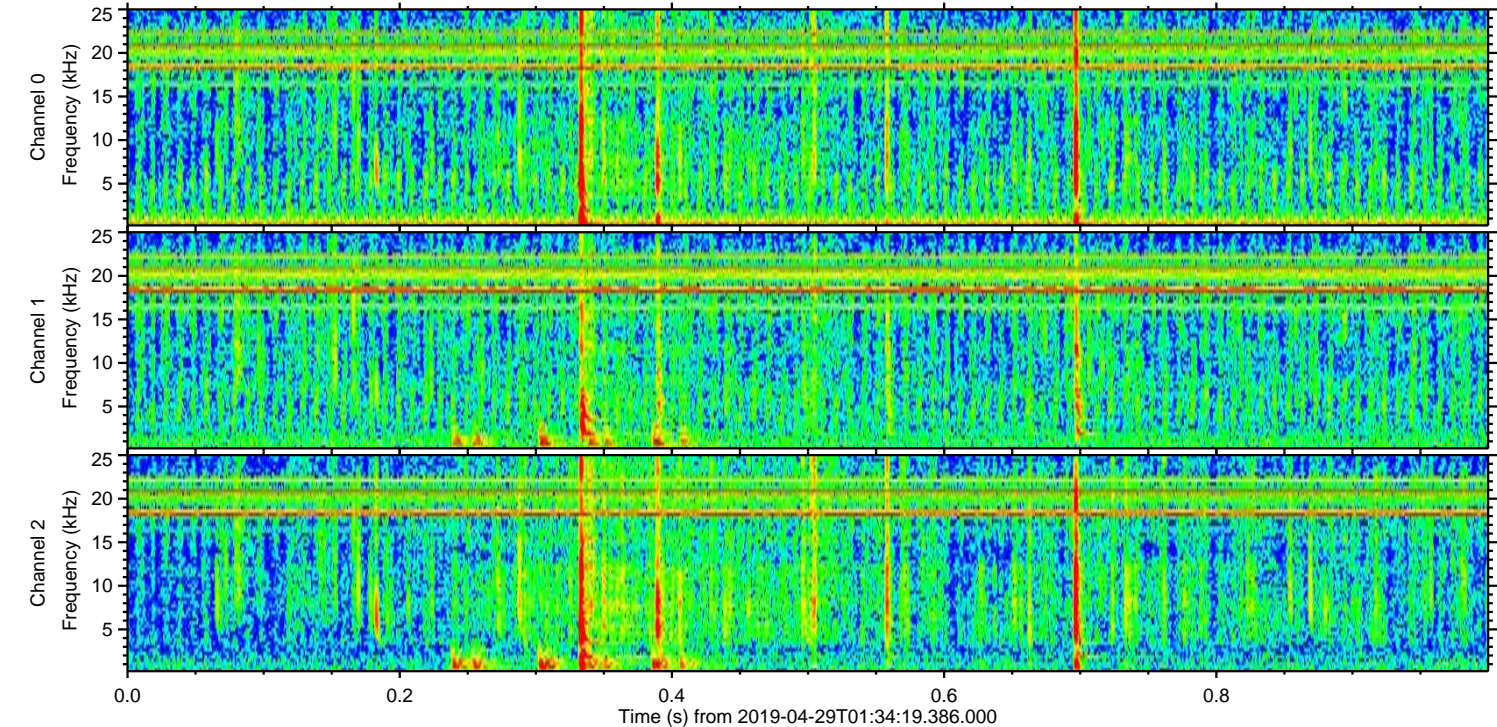
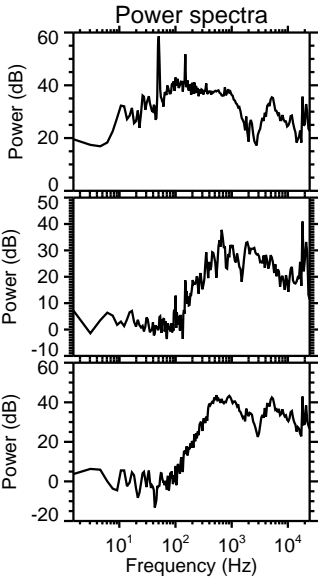
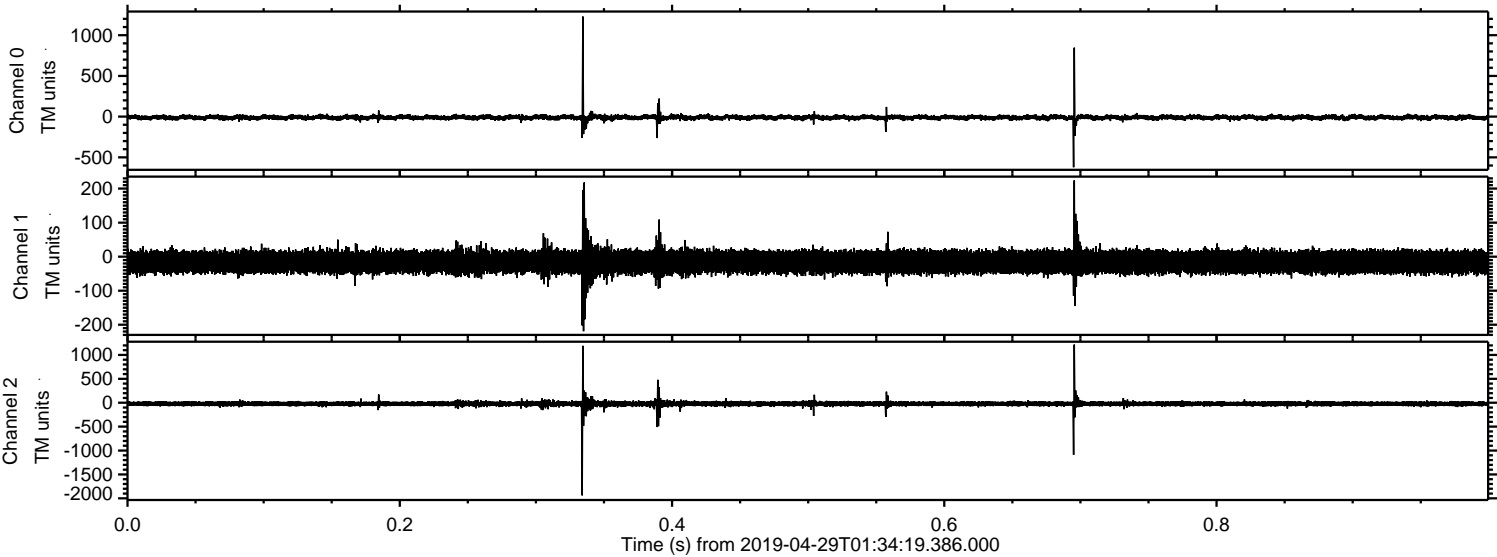
Channel 0
mn: -1055
mx: 1029
 μ : -10.2
 σ : 18.5

Channel 1
mn: -322
mx: 284
 μ : -15.9
 σ : 18.7

Channel 2
mn: -1948
mx: 1520
 μ : -21.7
 σ : 34.7

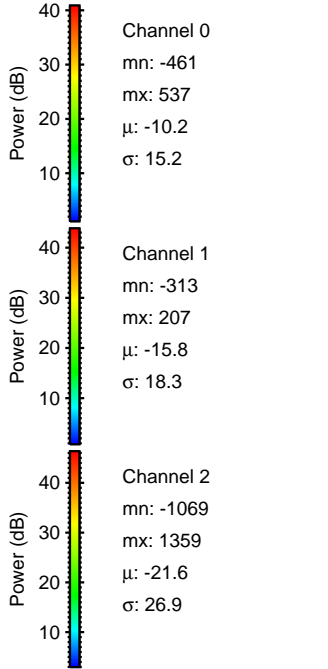
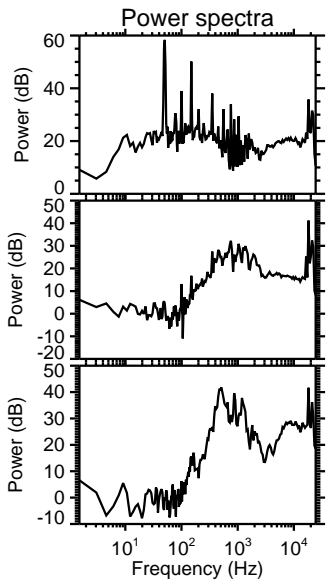
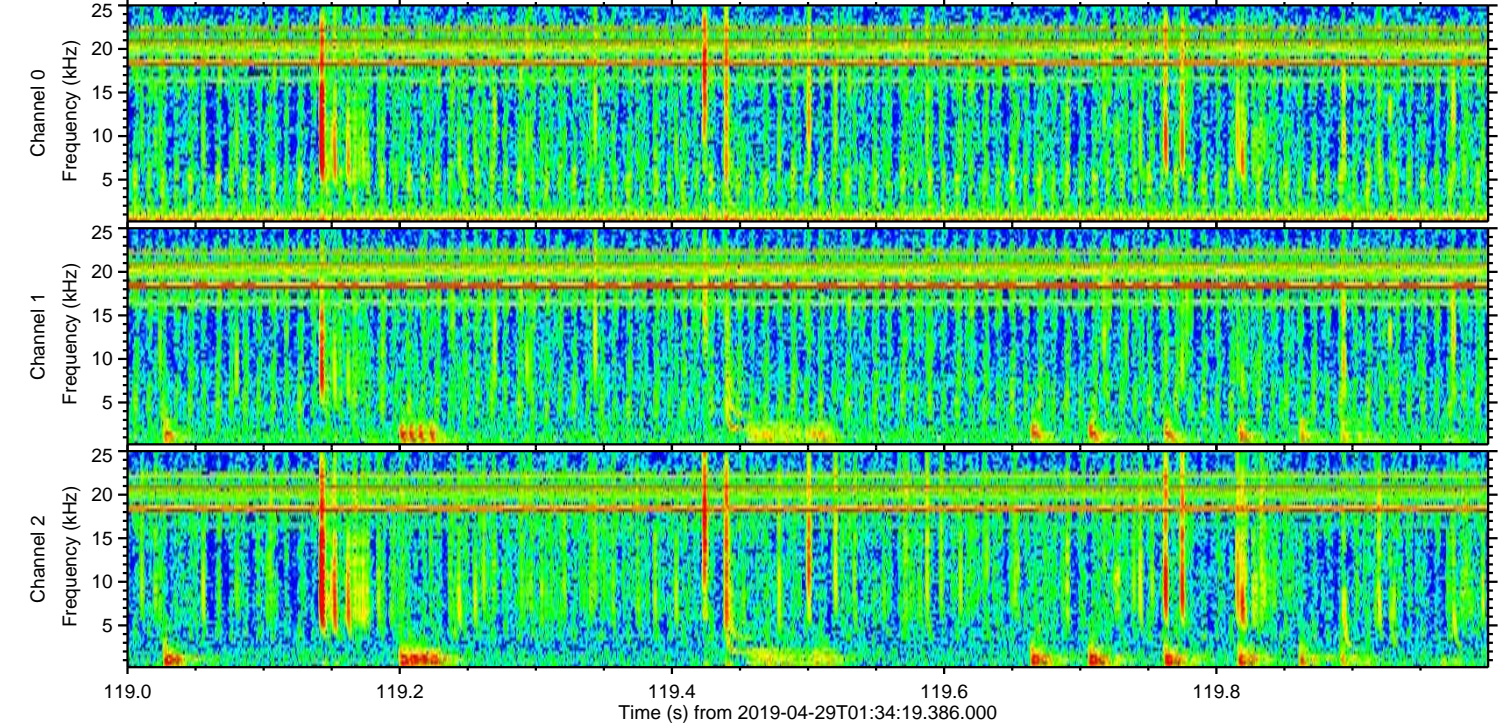
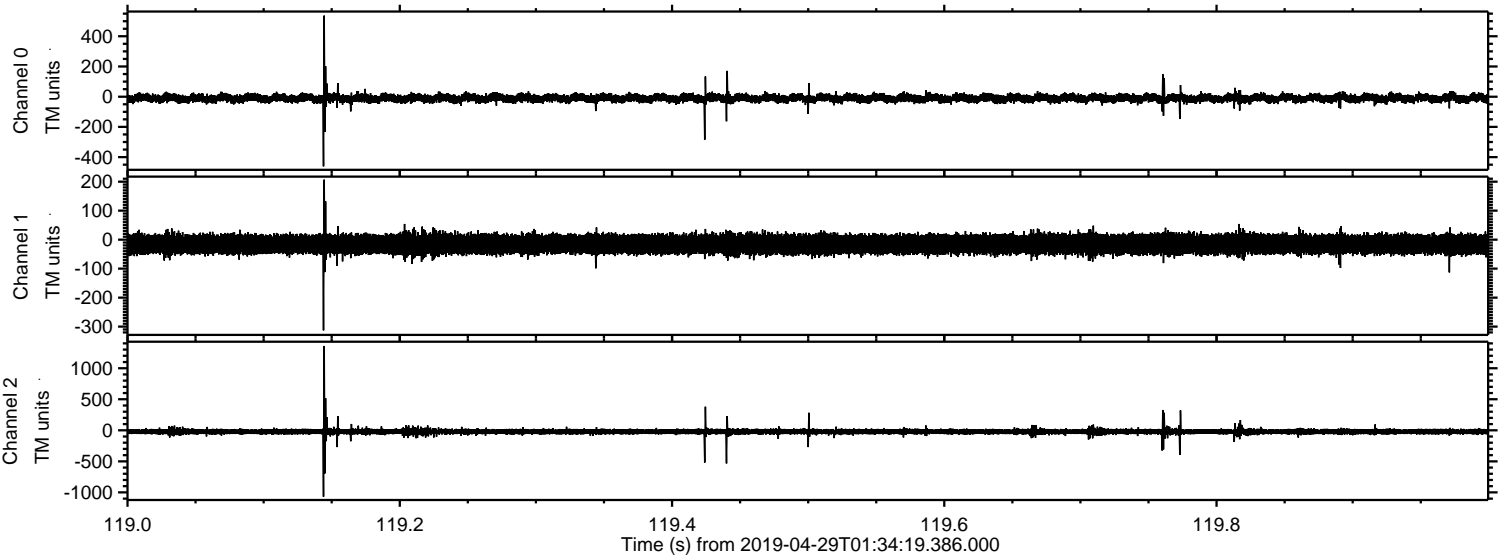
ELMAVAN 3D WAVEFORMS (Measured data sampled at 50 kHz) 51000 packets of 144 samples from 2019-04-29T01:34:19.386.000. Part 1/147

Processed Mon Apr 29 03:42:18 2019 by ELM ver.2012-10-06 from 001__elm20190429_013418__dat00.bin



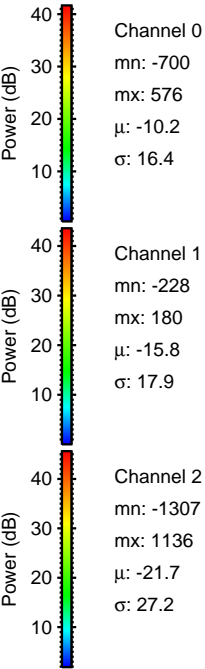
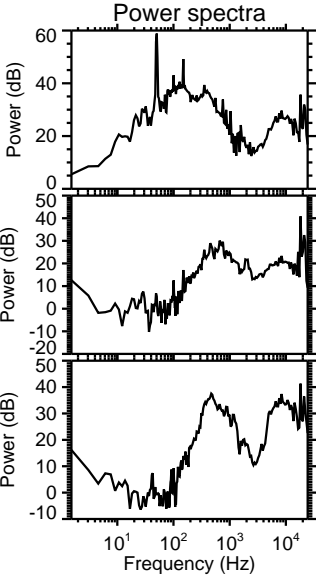
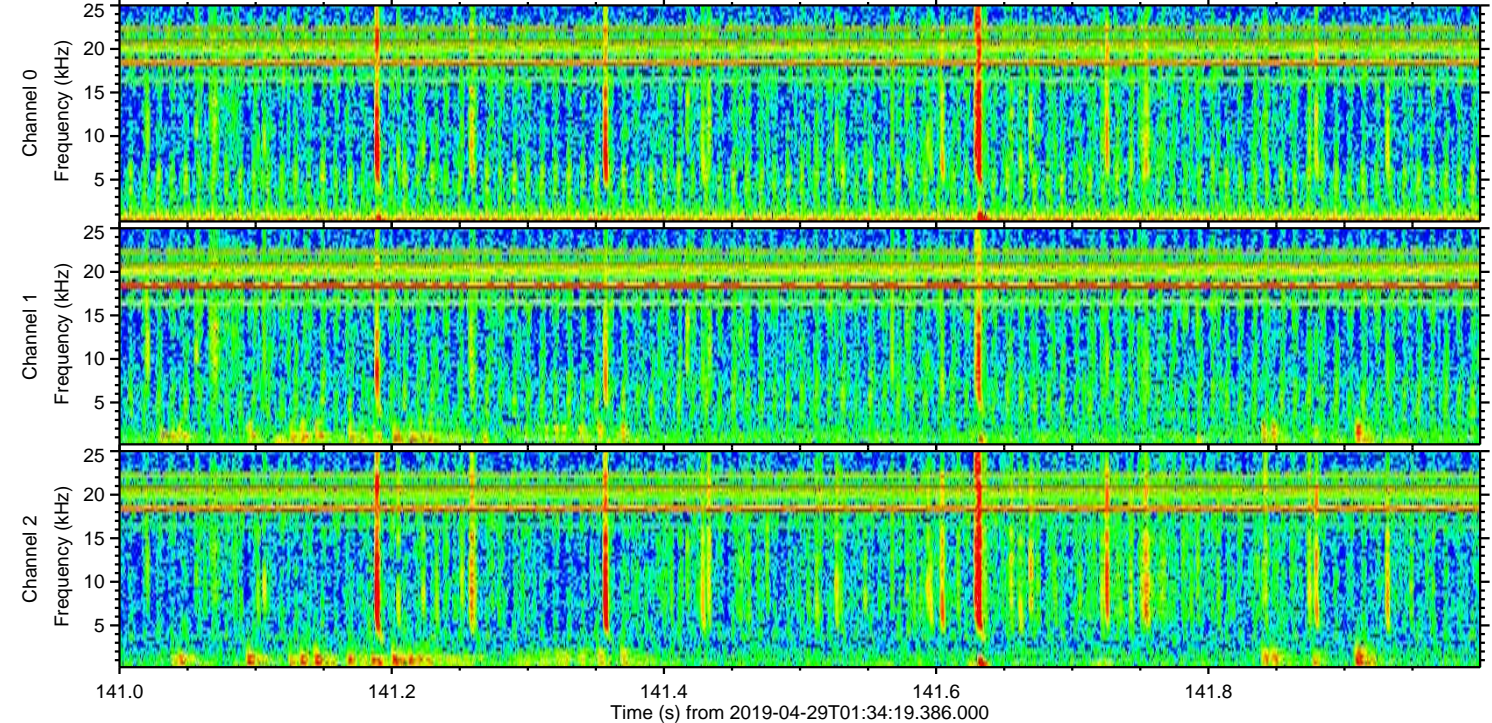
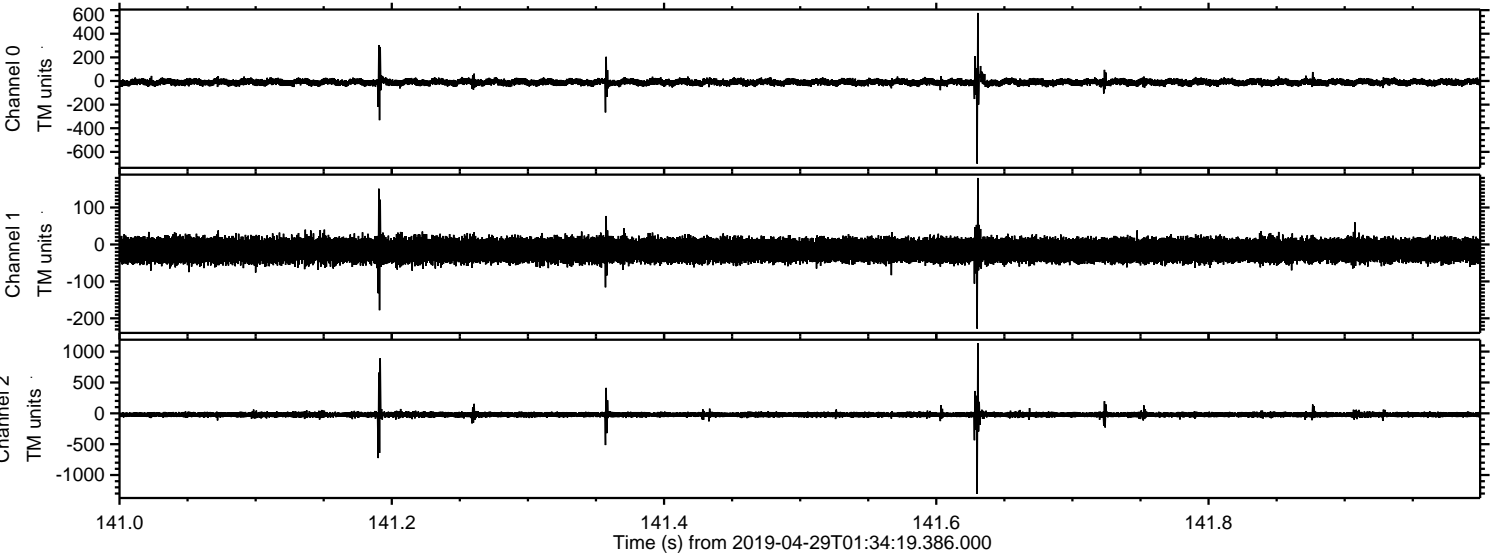
ELMAVAN 3D WAVEFORMS (Measured data sampled at 50 kHz) 51000 packets of 144 samples from 2019-04-29T01:34:19.386.000. Part 120/147

Processed Mon Apr 29 03:42:19 2019 by ELM ver.2012-10-06 from 001__elm20190429_013418__dat00.bin

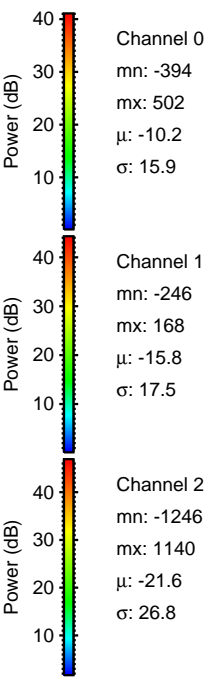
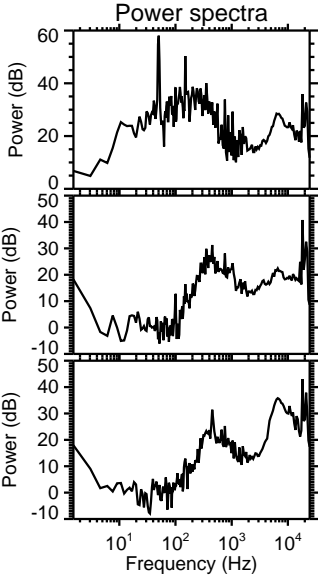
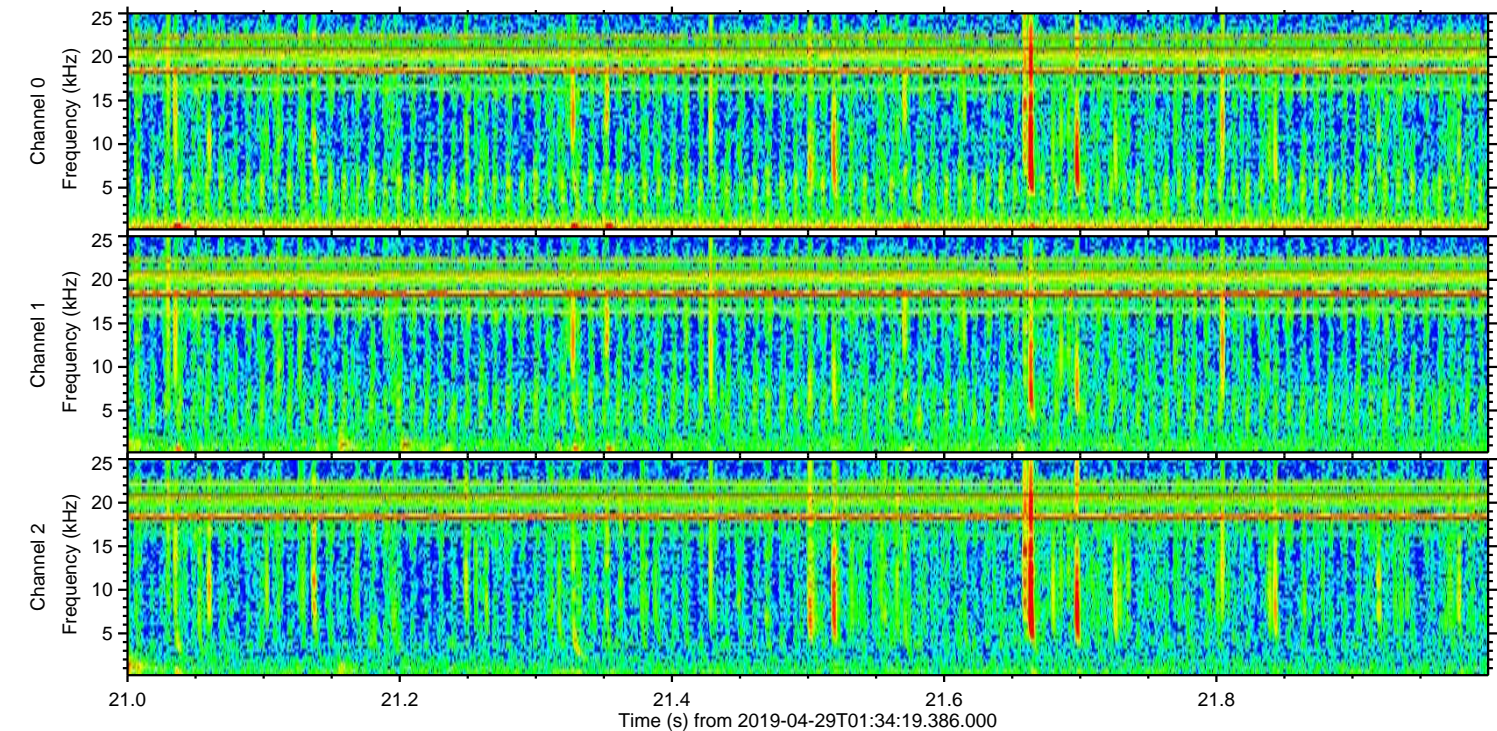
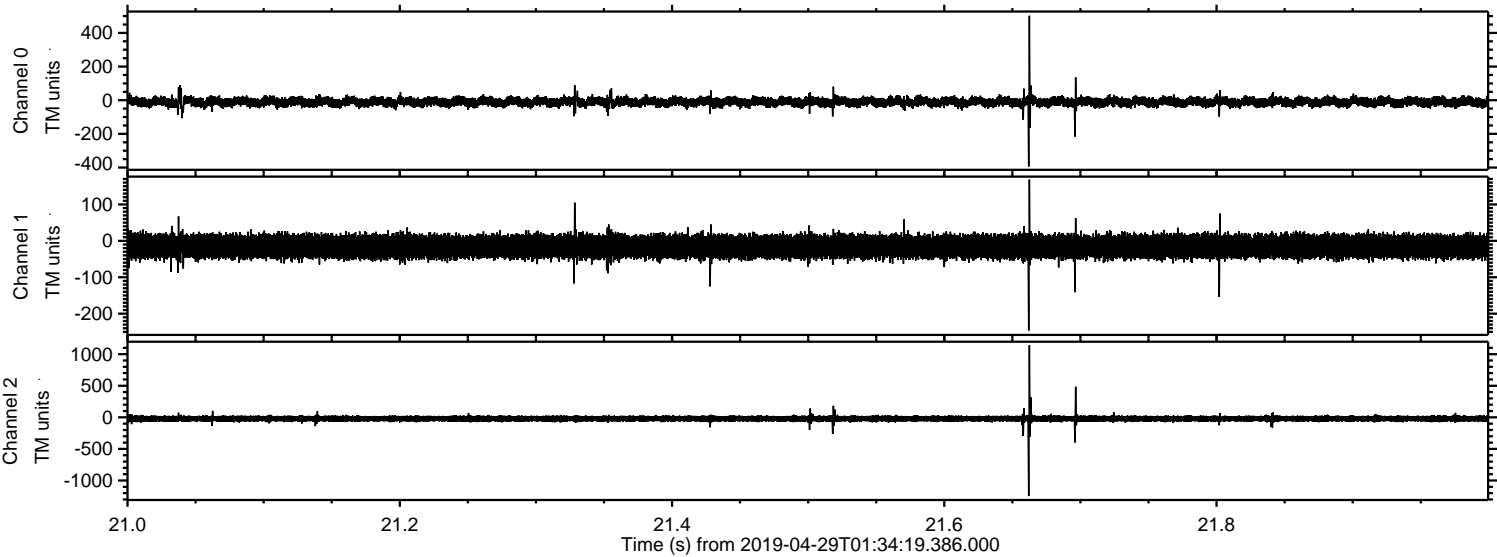


ELMAVAN 3D WAVEFORMS (Measured data sampled at 50 kHz) 51000 packets of 144 samples from 2019-04-29T01:34:19.386.000. Part 142/147

Processed Mon Apr 29 03:42:19 2019 by ELM ver.2012-10-06 from 001__elm20190429_013418__dat00.bin



Processed Mon Apr 29 03:42:20 2019 by ELM ver.2012-10-06 from 001__elm20190429_013418__dat00.bin

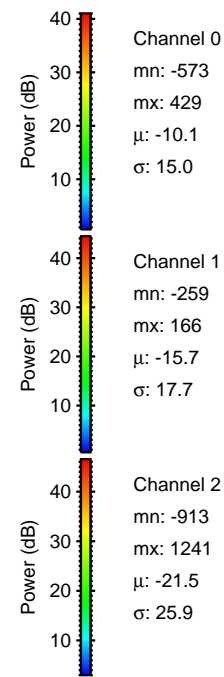
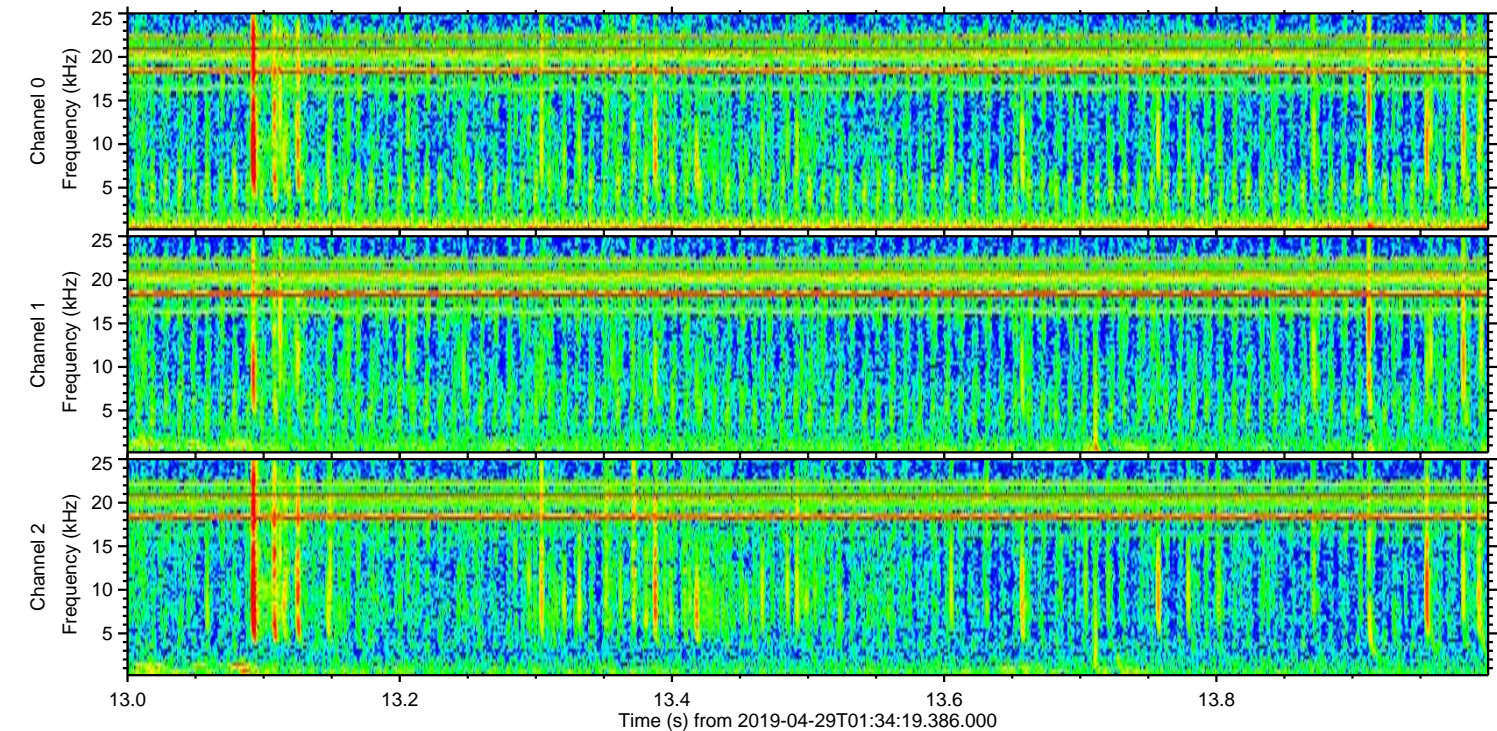
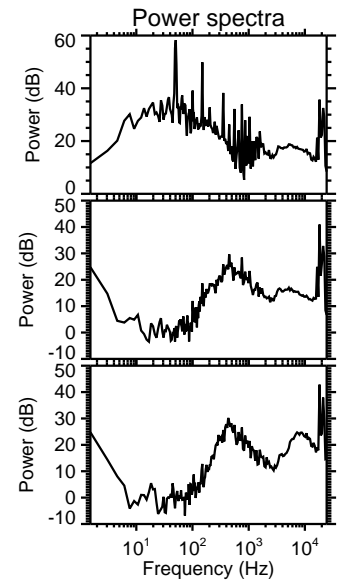
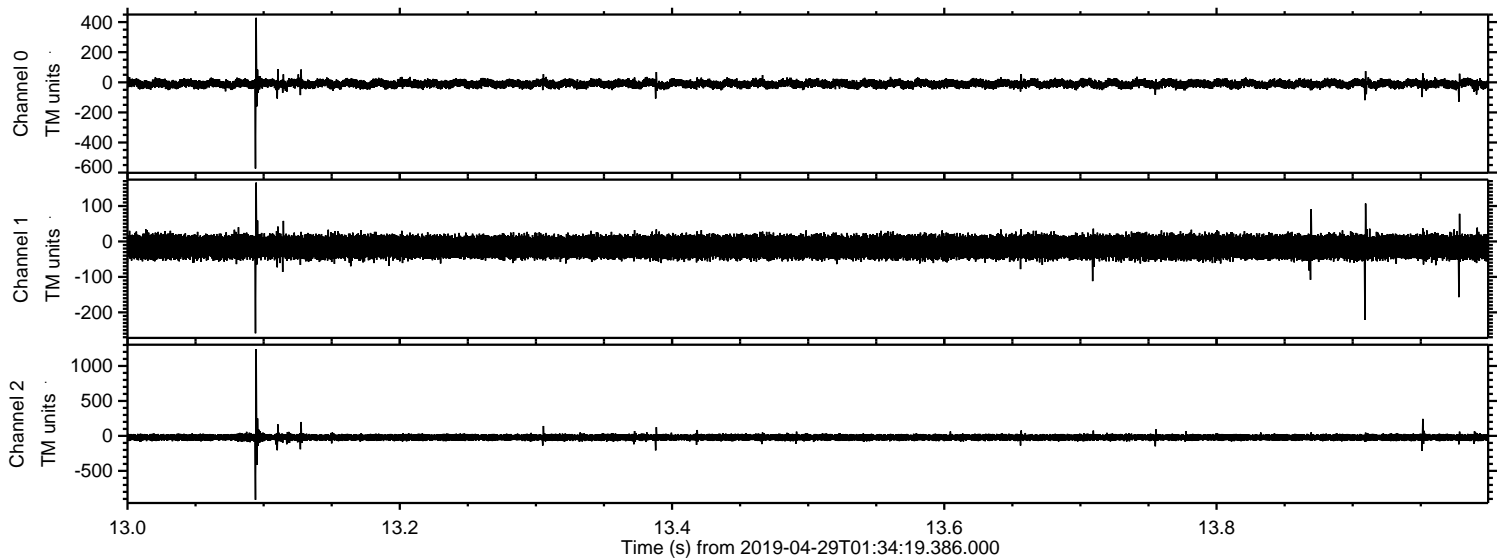


Channel 0
mn: -394
mx: 502
 μ : -10.2
 σ : 15.9

Channel 1
mn: -246
mx: 168
 μ : -15.8
 σ : 17.5

Channel 2
mn: -1246
mx: 1140
 μ : -21.6
 σ : 26.8

Processed Mon Apr 29 03:42:21 2019 by ELM ver.2012-10-06 from 001__elm20190429_013418__dat00.bin



Processed Mon Apr 29 03:42:21 2019 by ELM ver.2012-10-06 from 001__elm20190429_013418__dat00.bin

