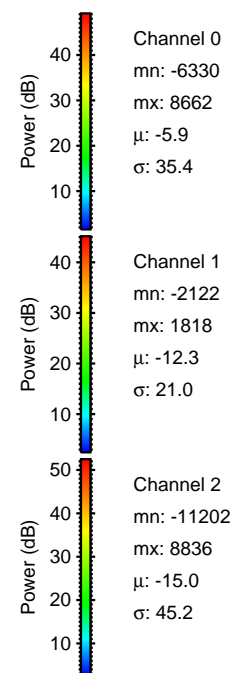
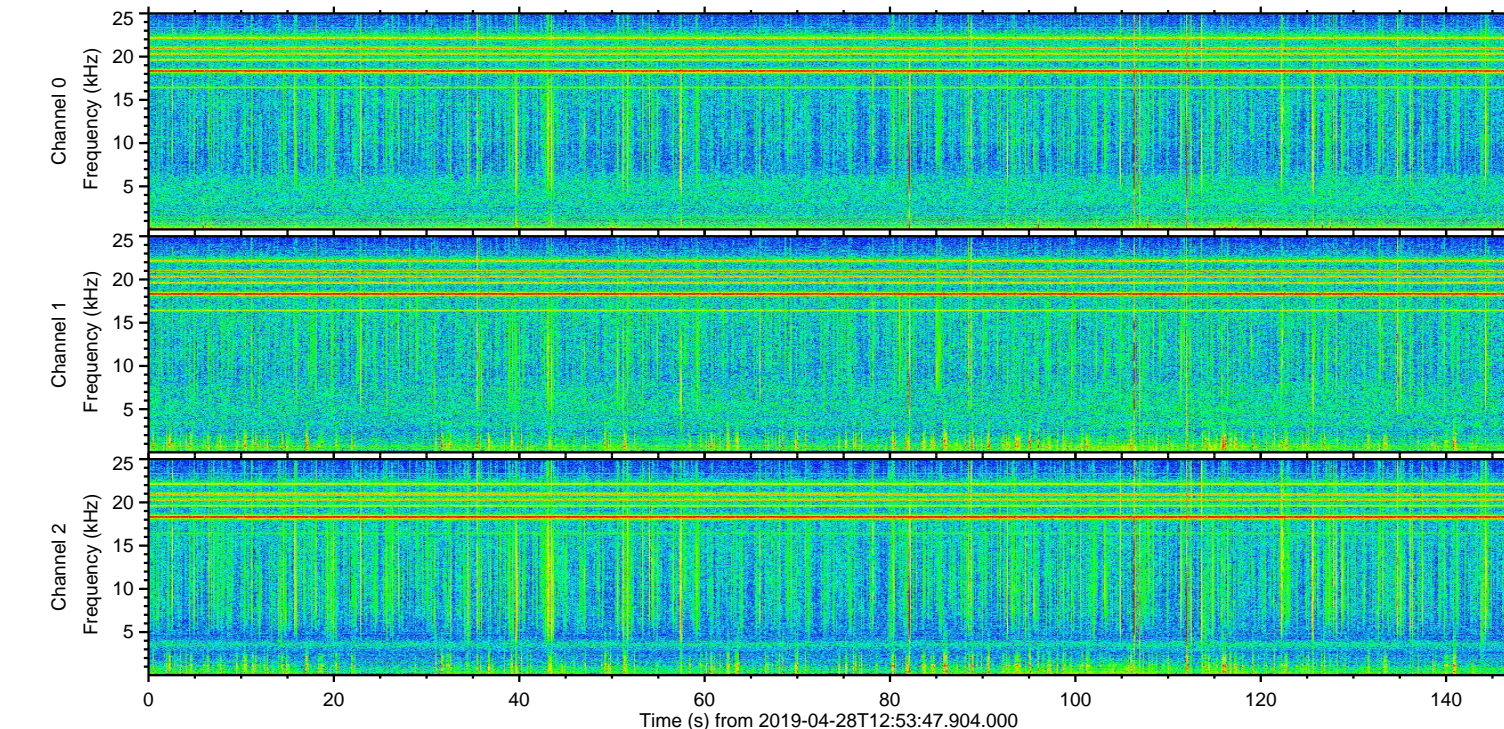
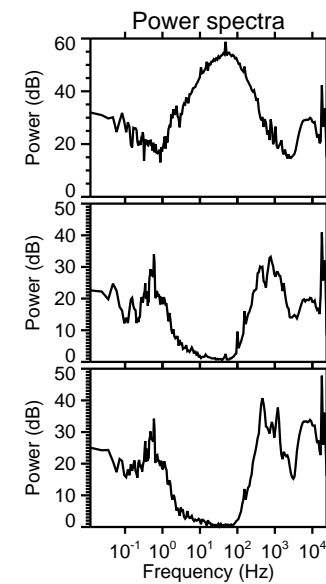
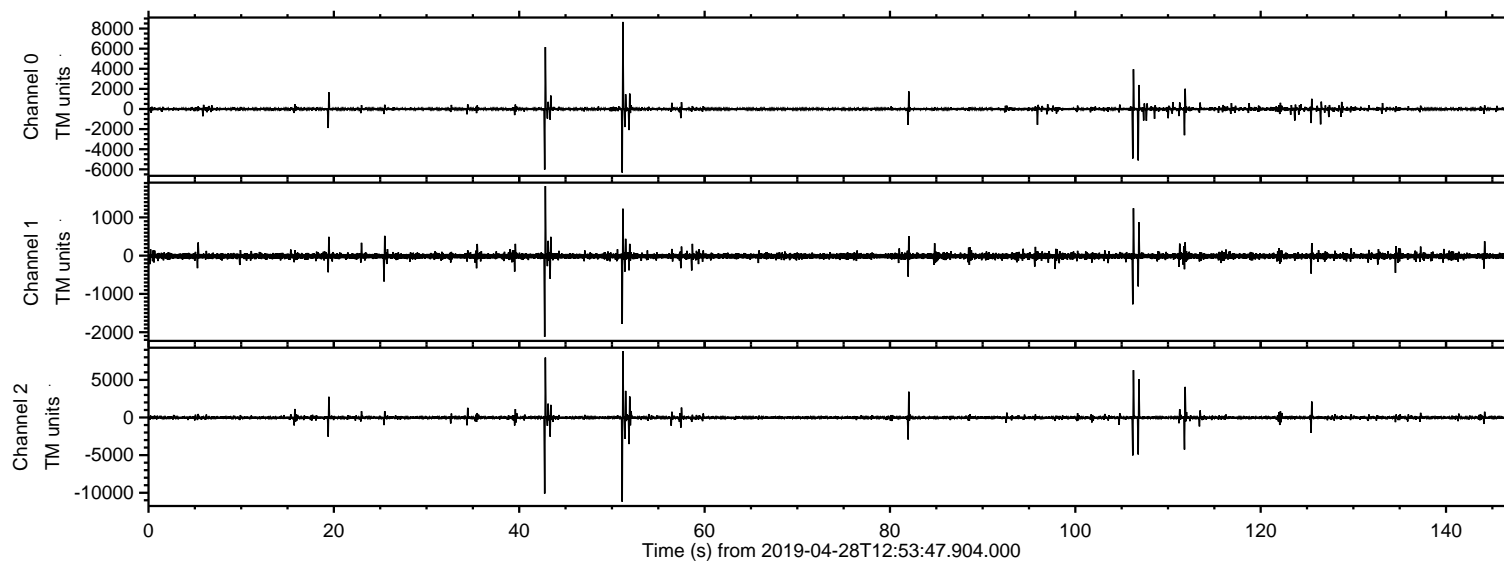
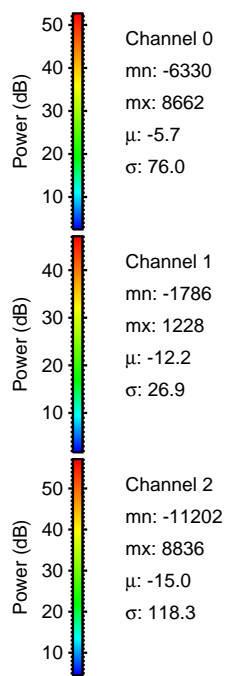
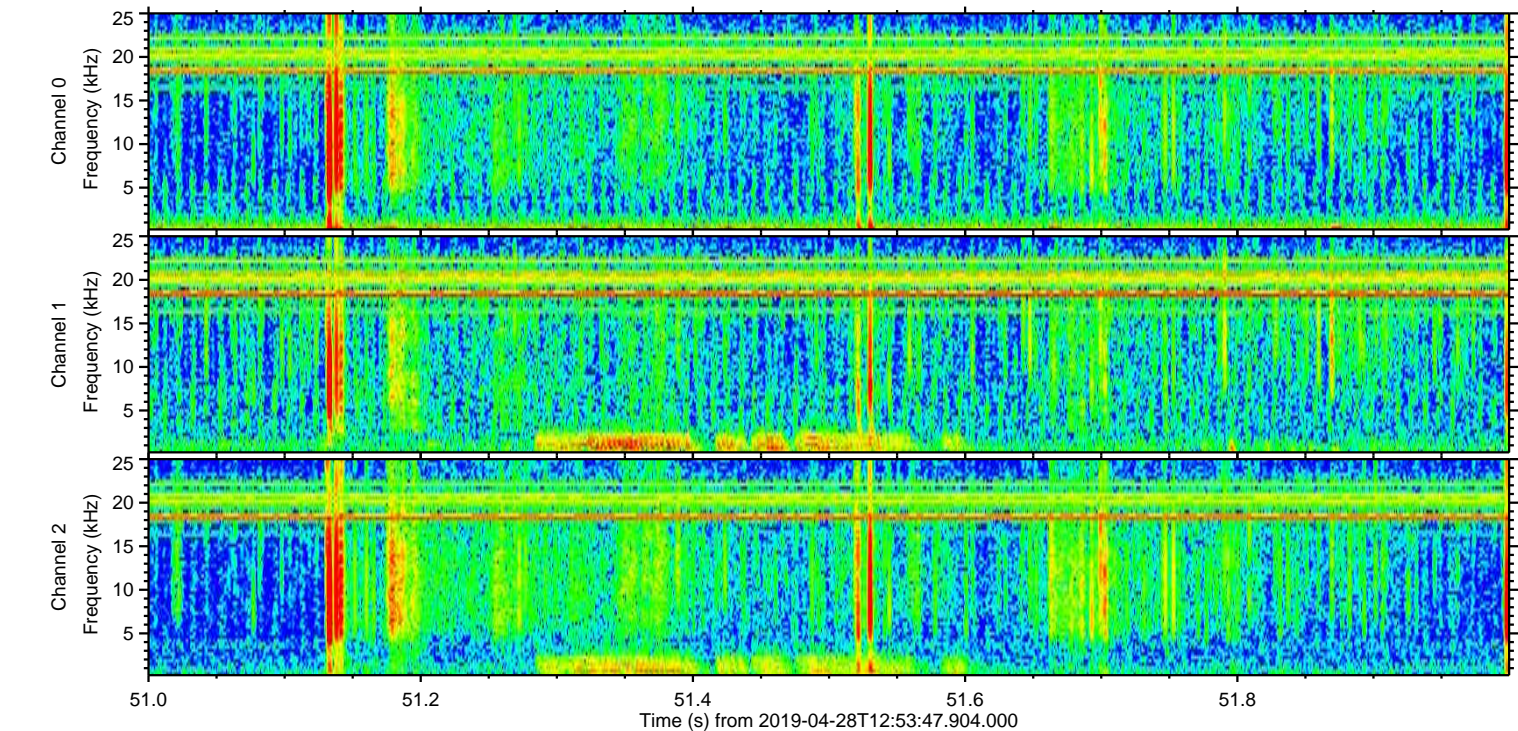
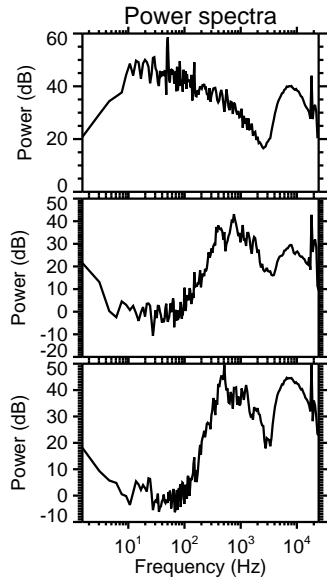
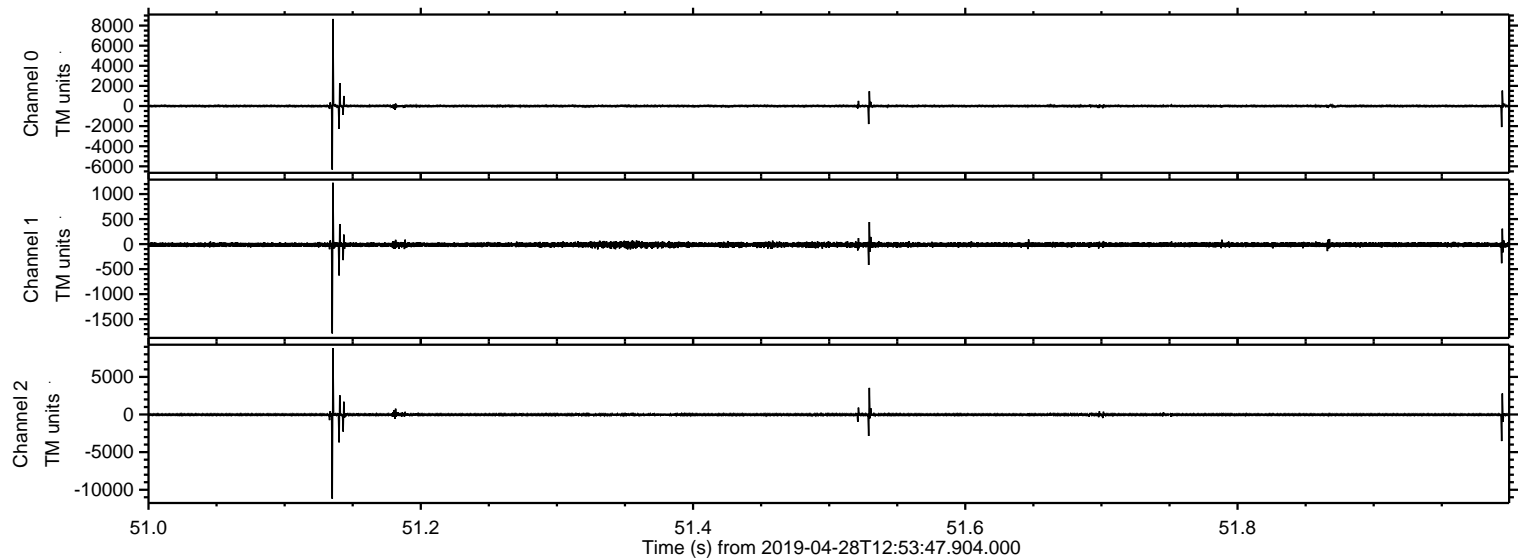


ELMAVAN 3D WAVEFORMS (Measured data sampled at 50 kHz) 51000 packets of 144 samples from 2019-04-28T12:53:47.904.000.

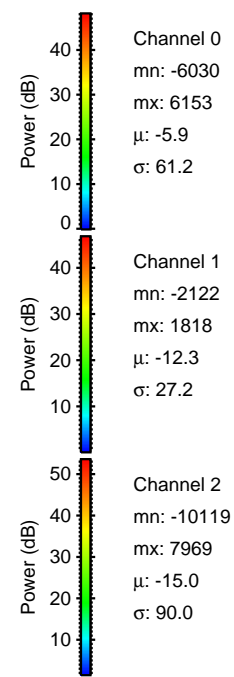
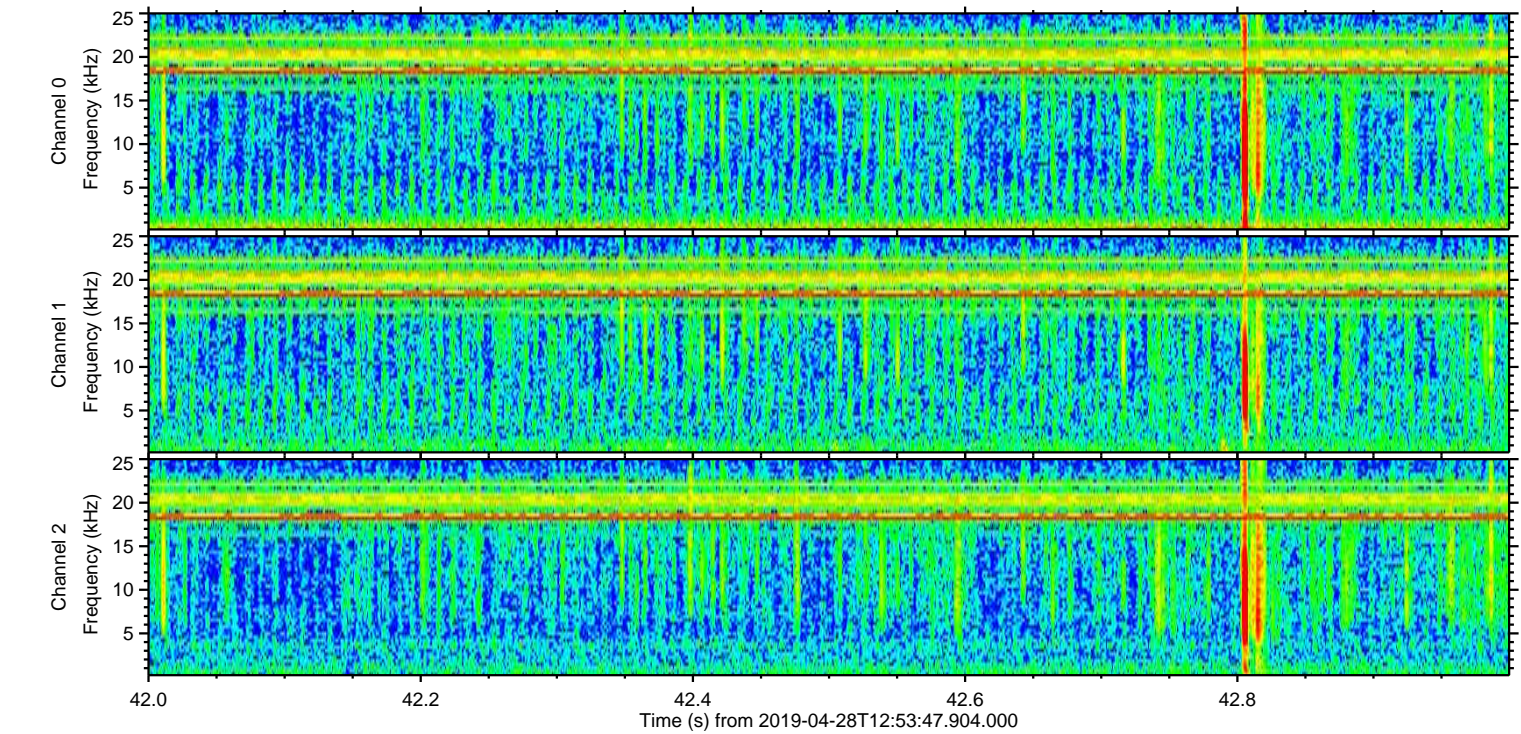
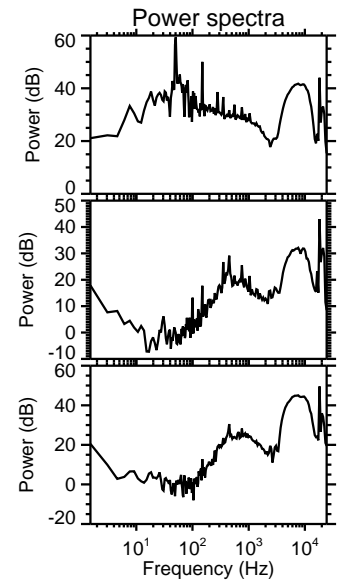
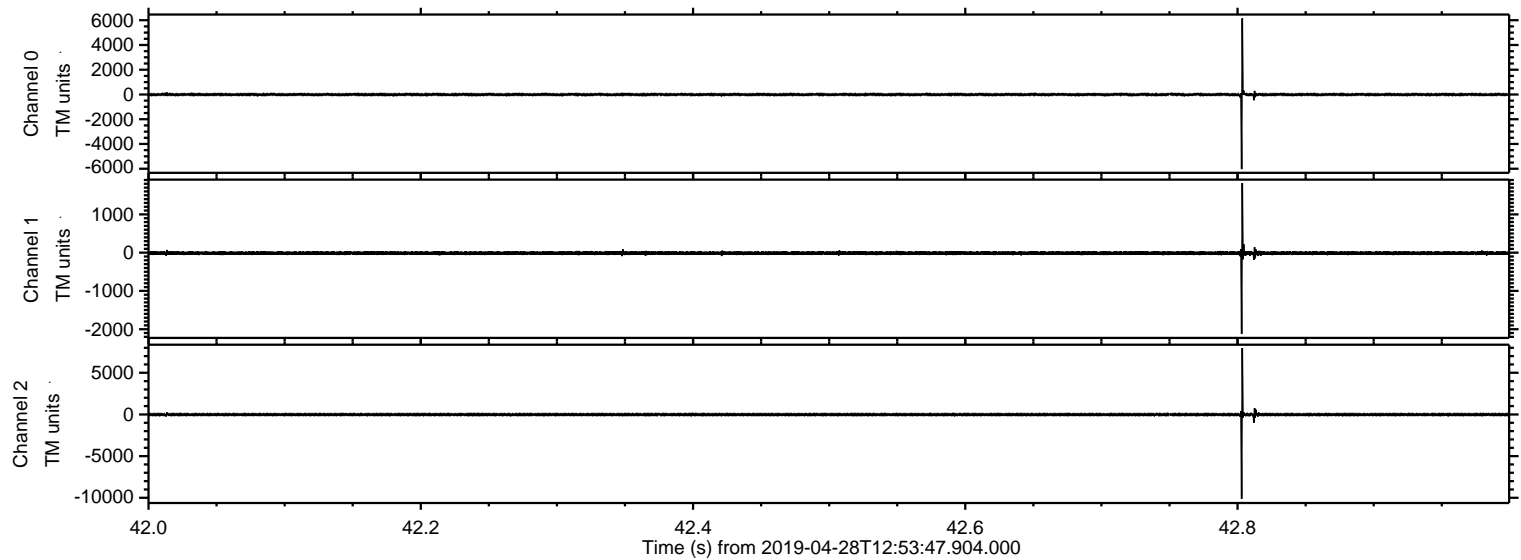
Processed Sun Apr 28 15:01:24 2019 by ELM ver.2012-10-06 from 001__elm20190428_125346__dat00.bin



Processed Sun Apr 28 15:01:30 2019 by ELM ver.2012-10-06 from 001__elm20190428_125346__dat00.bin

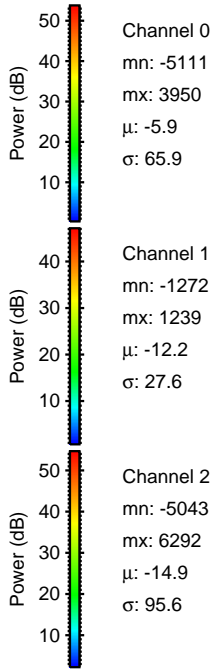
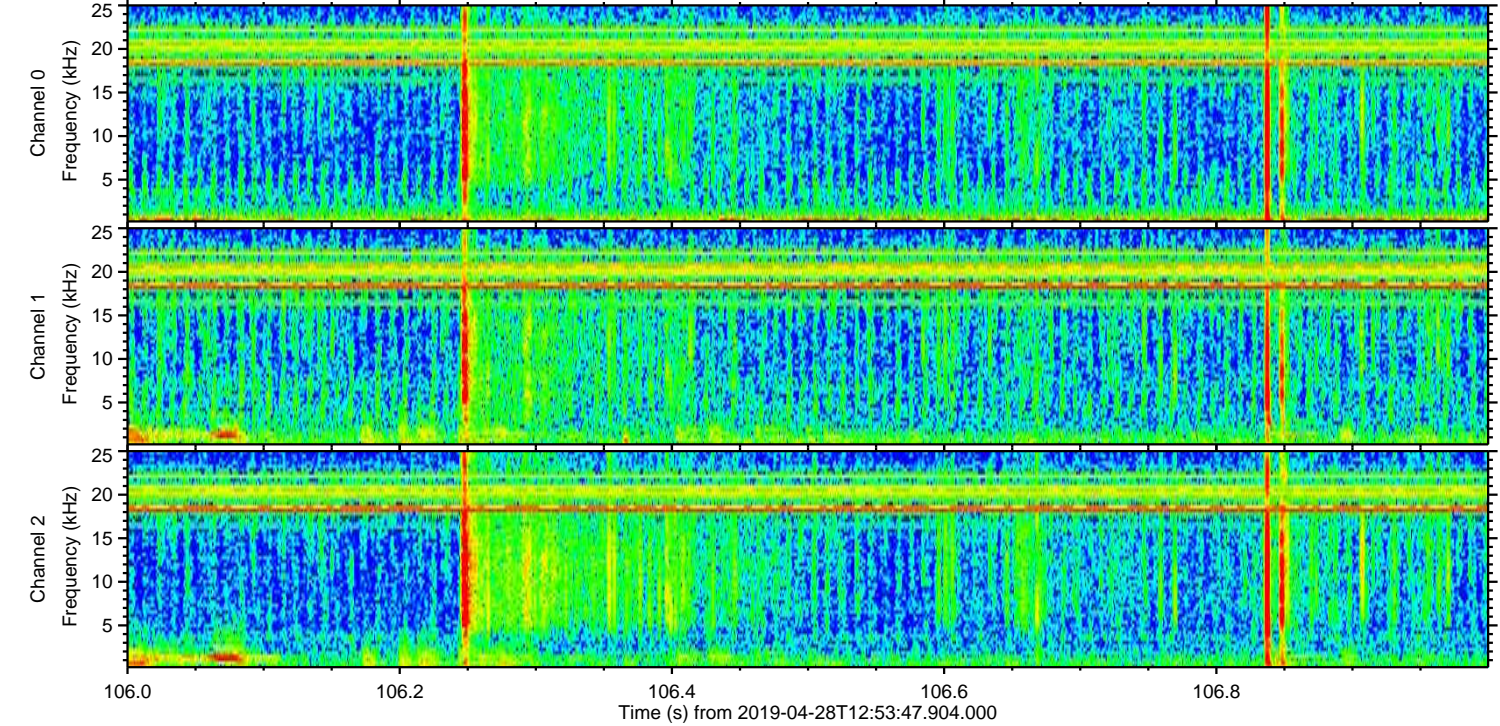
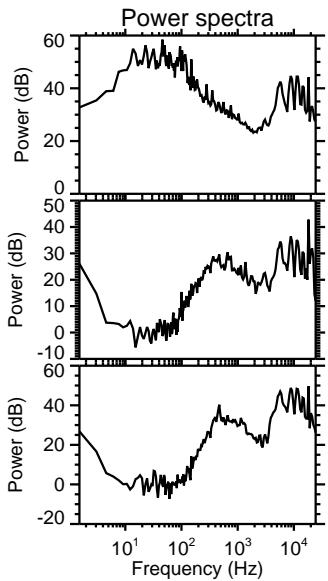
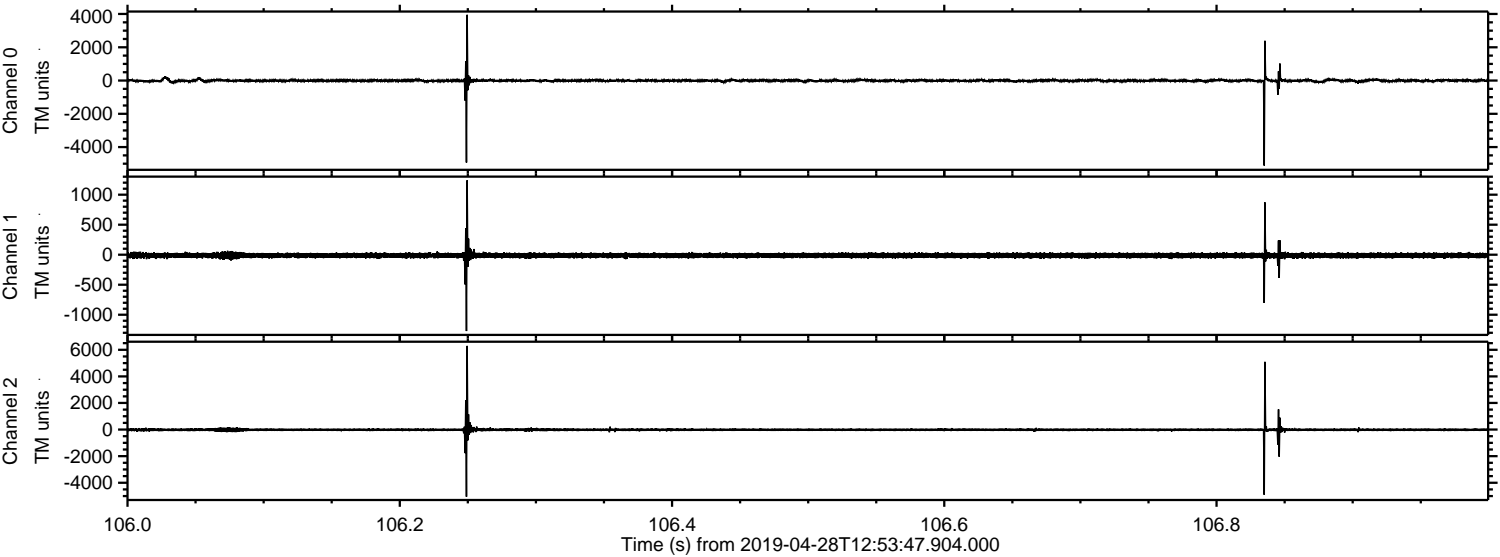


Processed Sun Apr 28 15:01:31 2019 by ELM ver.2012-10-06 from 001__elm20190428_125346__dat00.bin



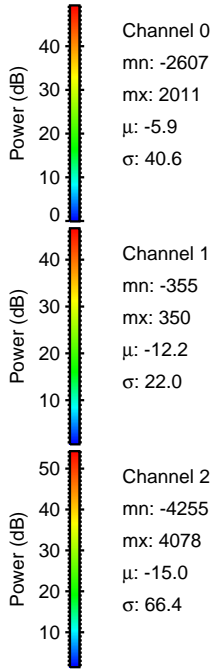
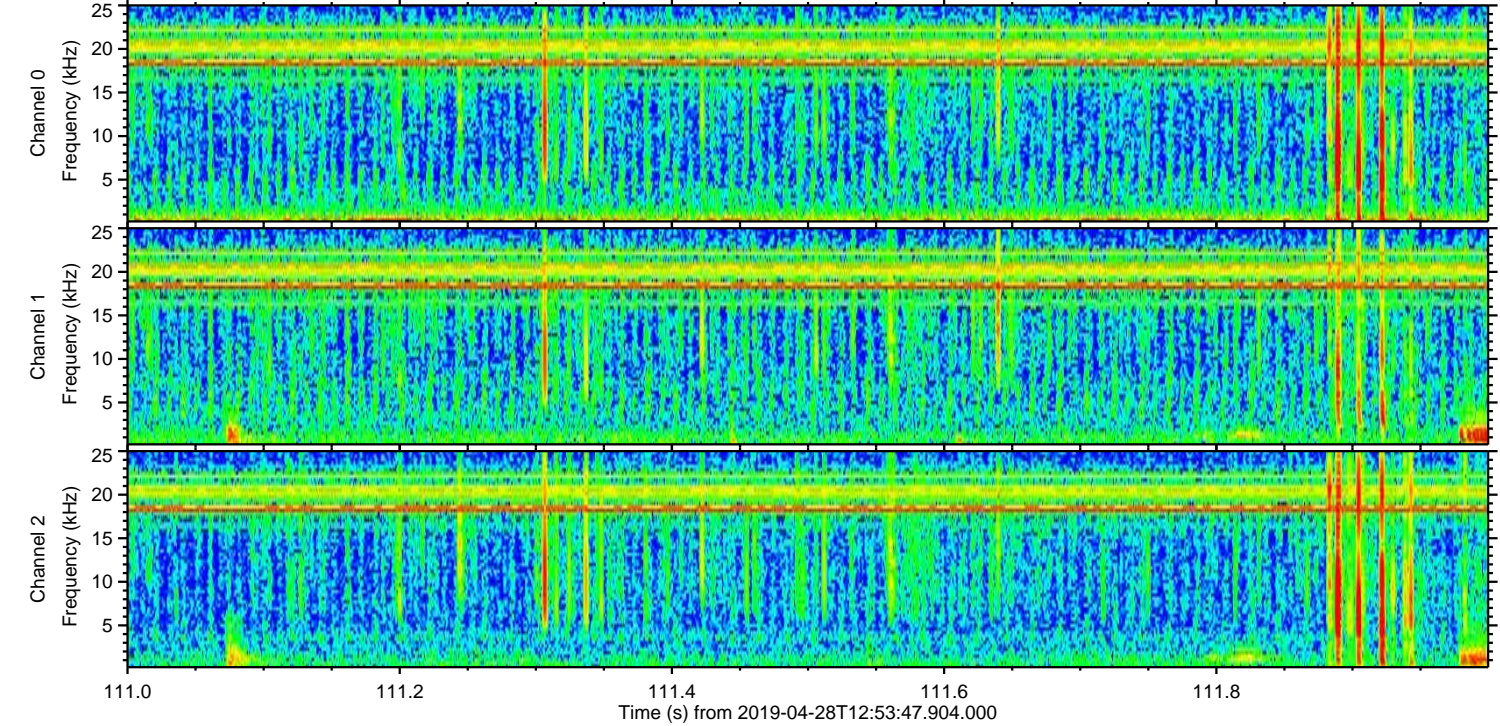
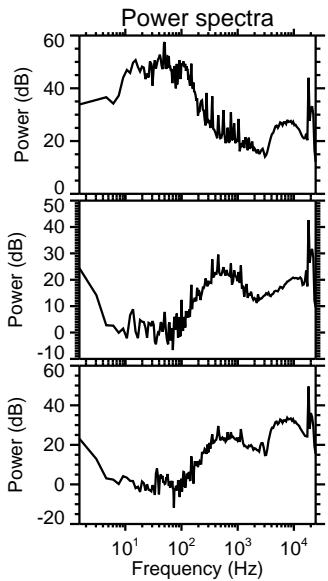
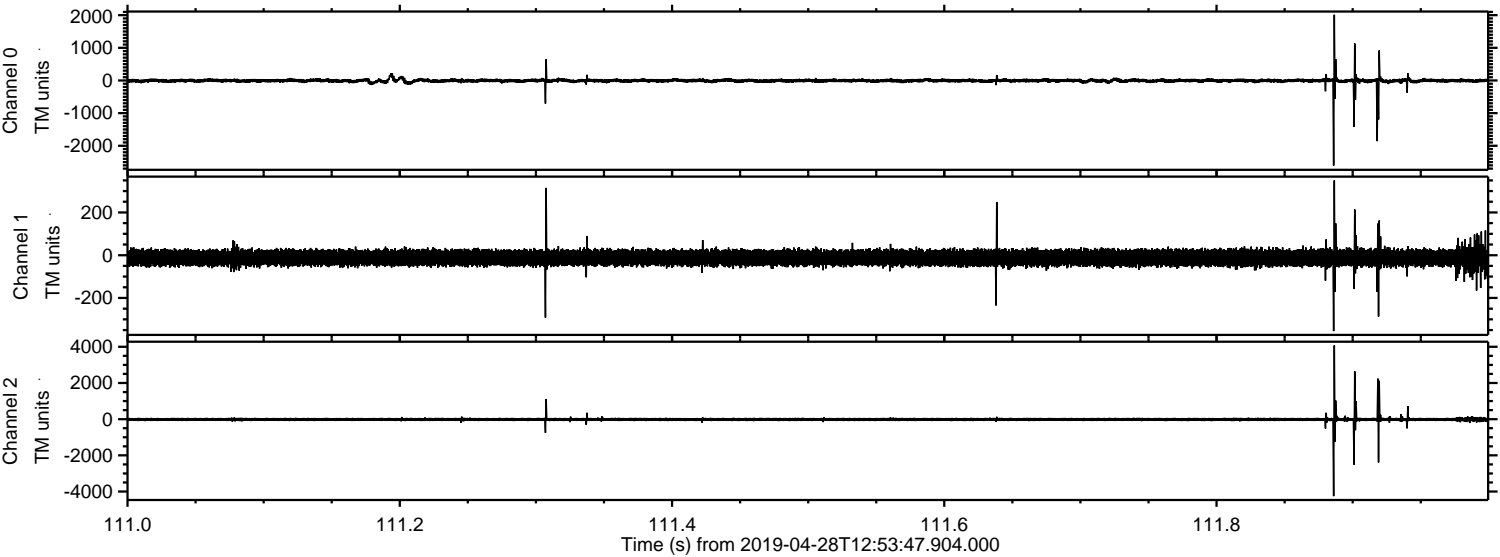
ELMAVAN 3D WAVEFORMS (Measured data sampled at 50 kHz) 51000 packets of 144 samples from 2019-04-28T12:53:47.904.000. Part 107/147

Processed Sun Apr 28 15:01:32 2019 by ELM ver.2012-10-06 from 001__elm20190428_125346__dat00.bin

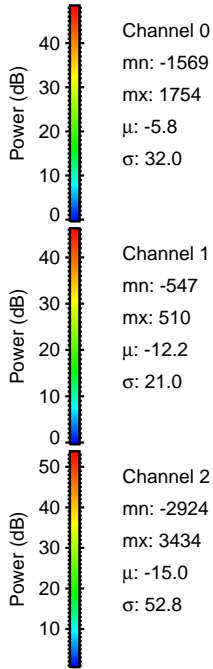
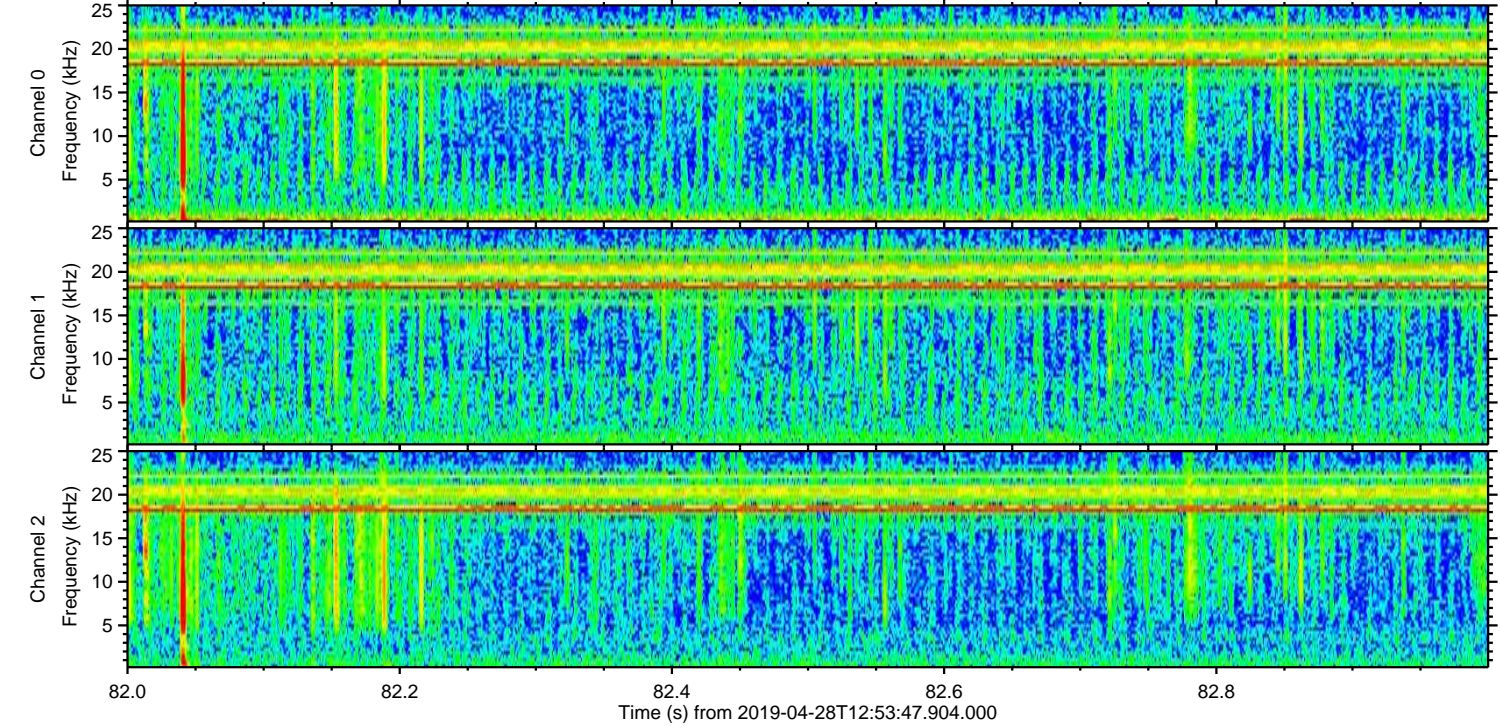
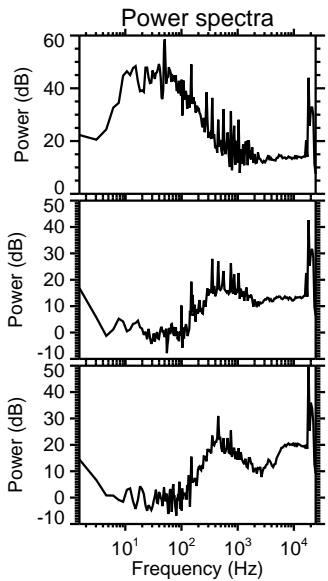
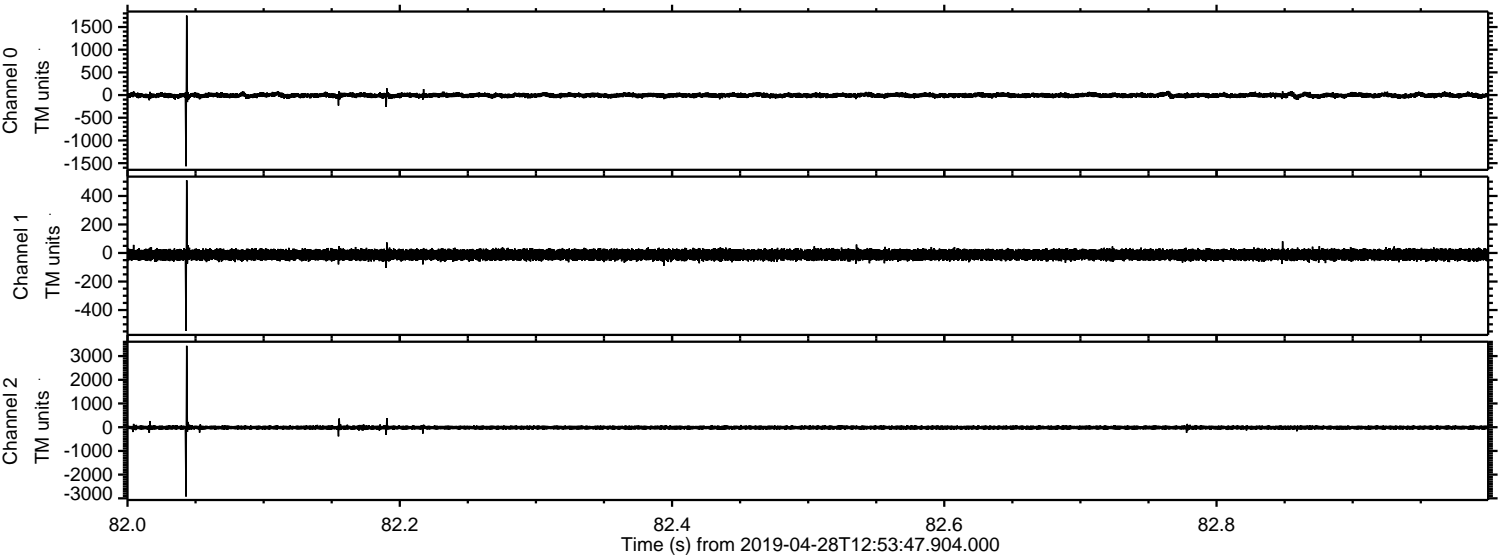


ELMAVAN 3D WAVEFORMS (Measured data sampled at 50 kHz) 51000 packets of 144 samples from 2019-04-28T12:53:47.904.000. Part 112/147

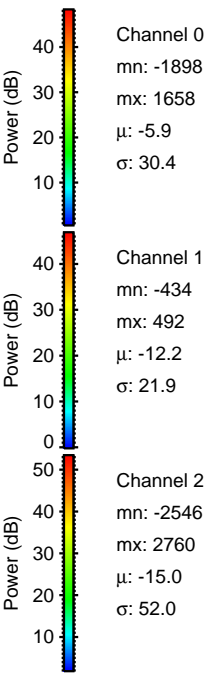
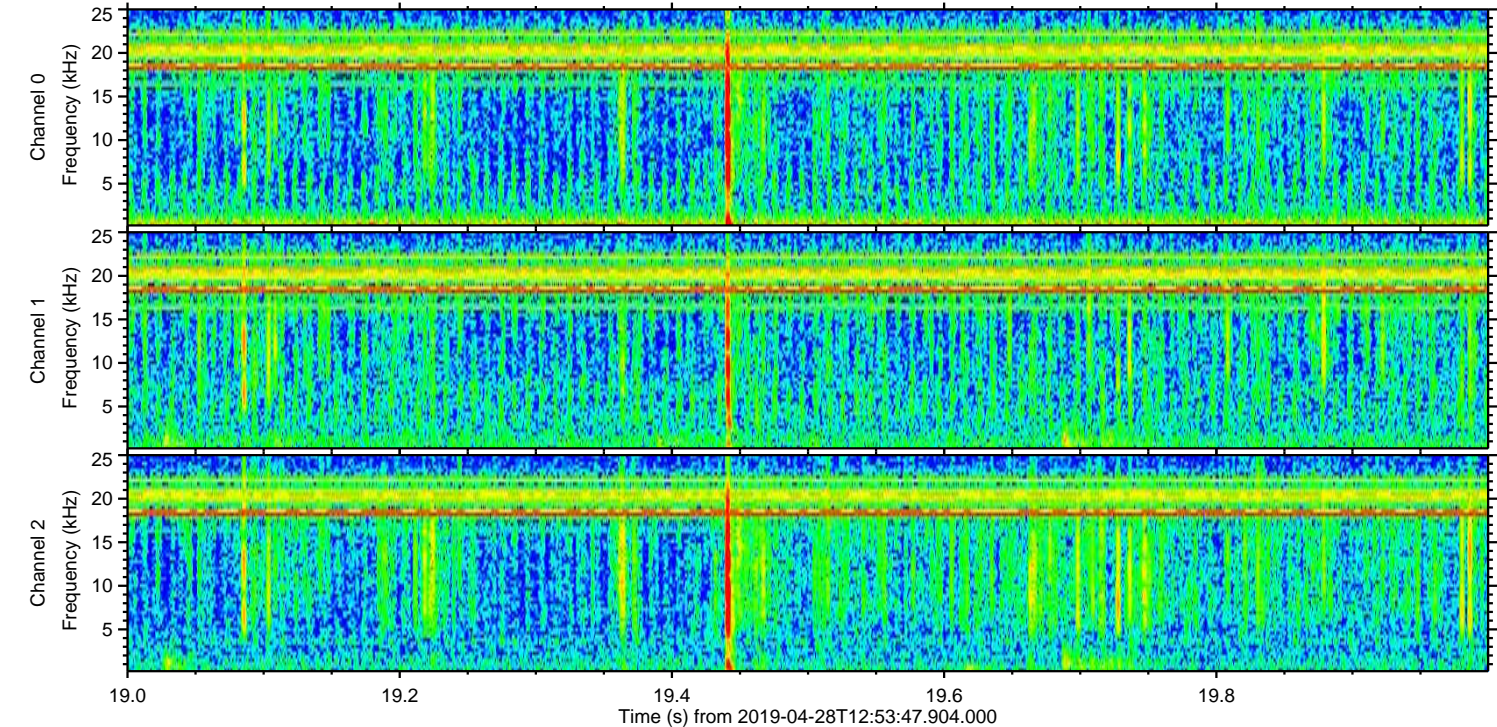
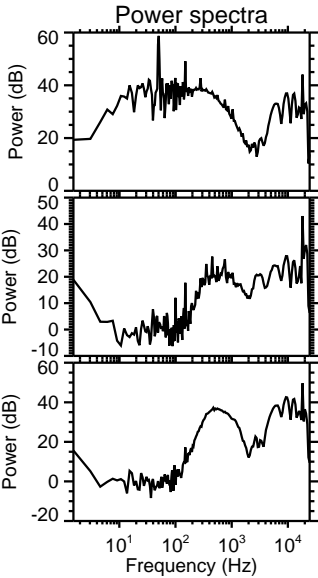
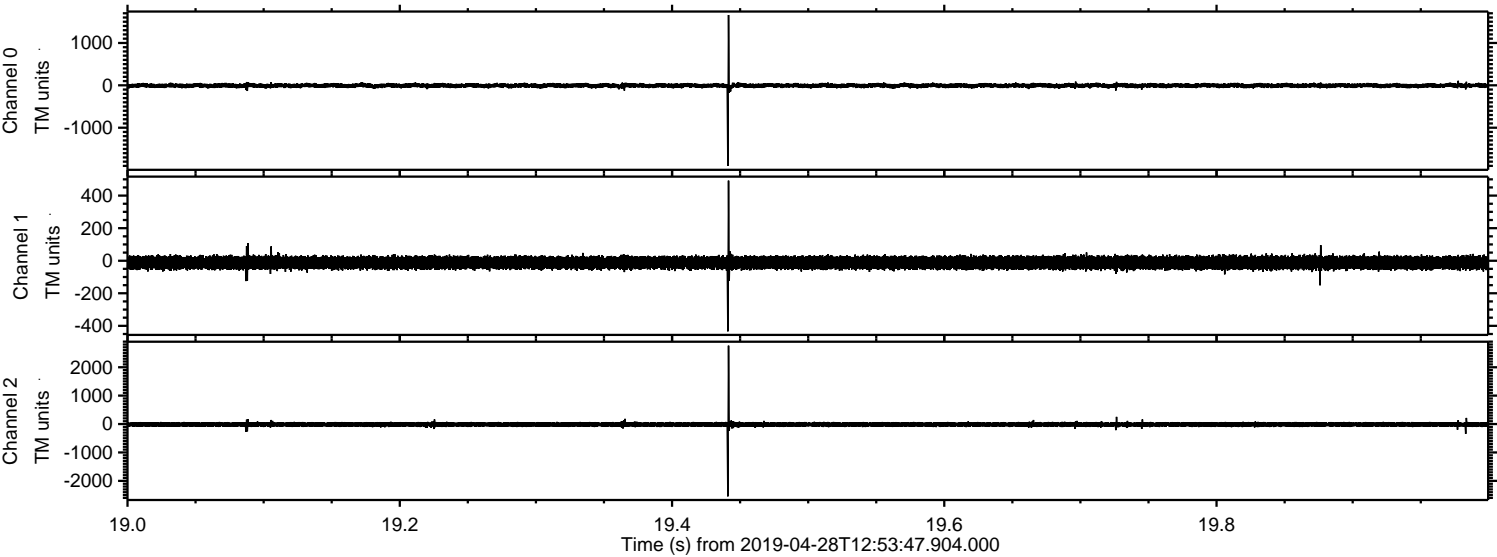
Processed Sun Apr 28 15:01:32 2019 by ELM ver.2012-10-06 from 001__elm20190428_125346__dat00.bin



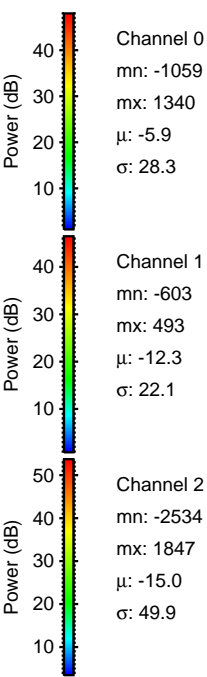
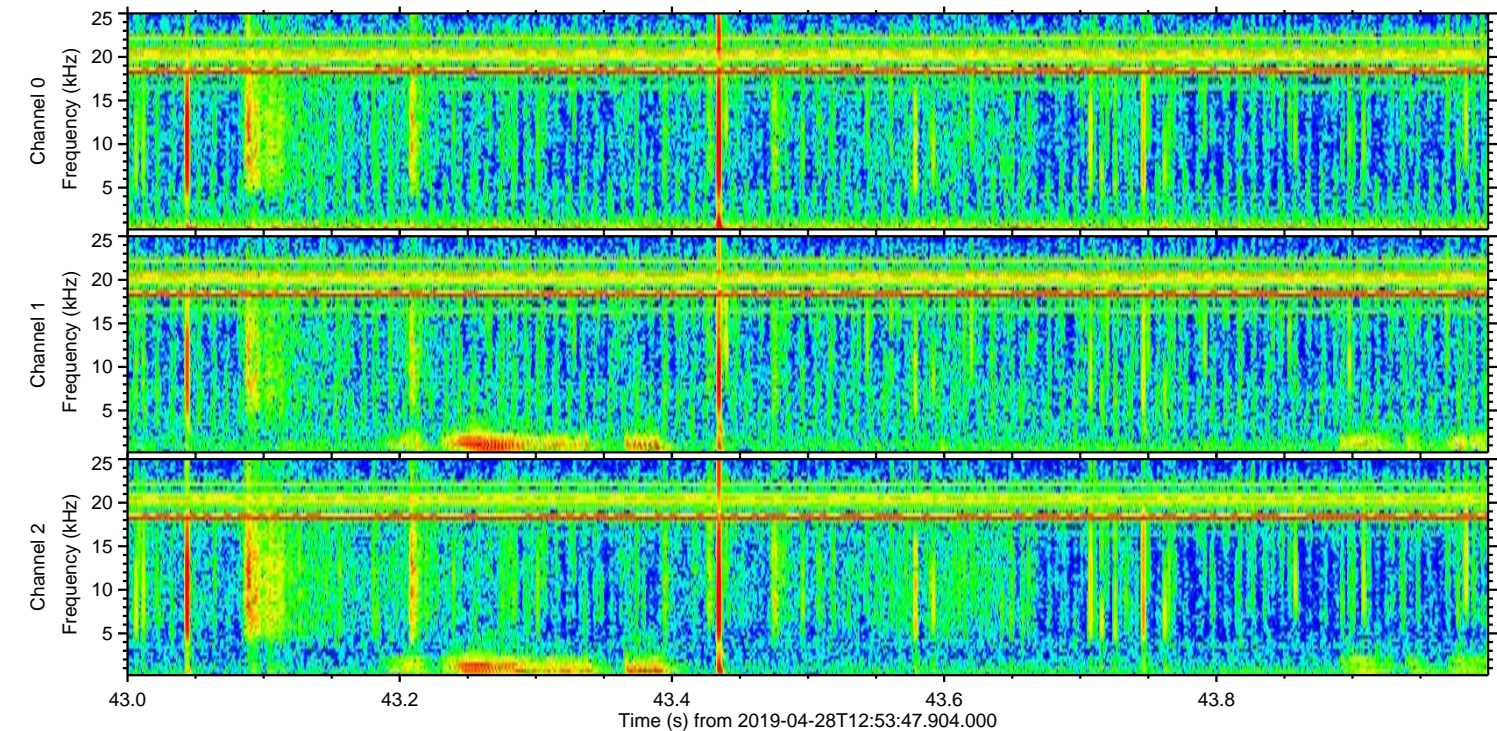
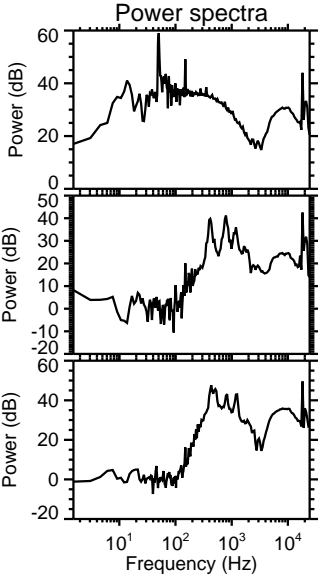
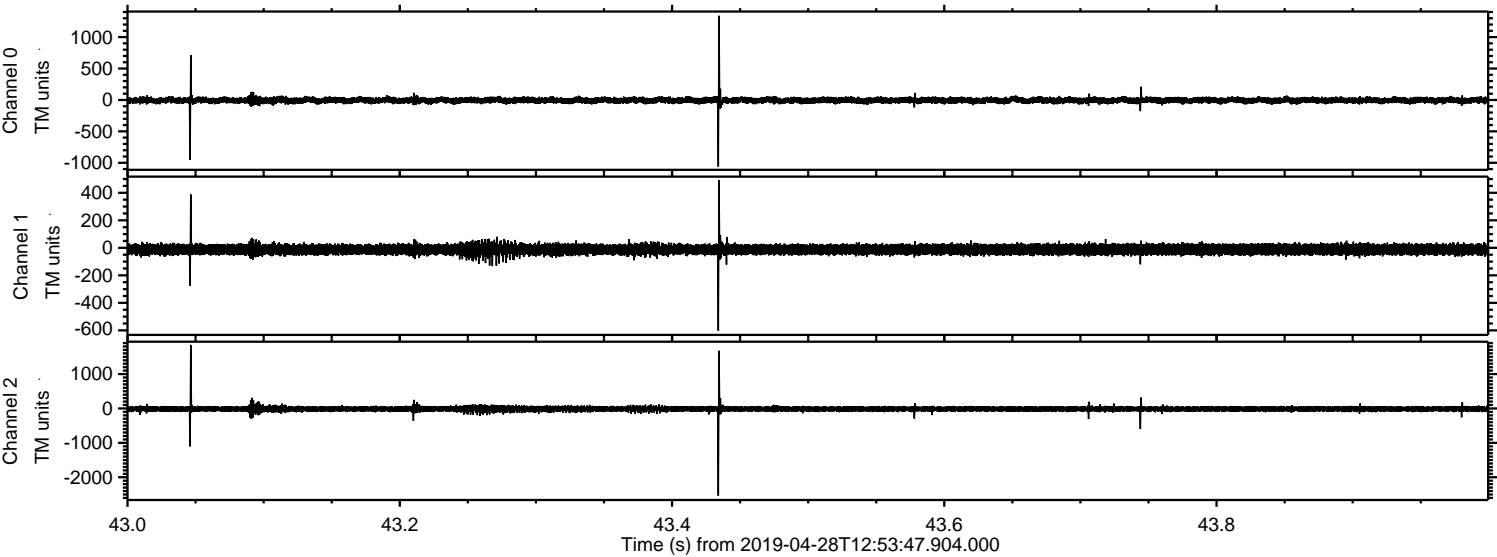
Processed Sun Apr 28 15:01:33 2019 by ELM ver.2012-10-06 from 001__elm20190428_125346__dat00.bin



Processed Sun Apr 28 15:01:34 2019 by ELM ver.2012-10-06 from 001__elm20190428_125346__dat00.bin

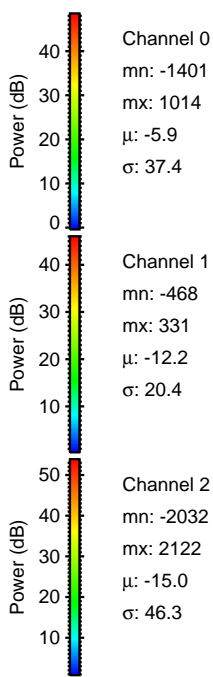
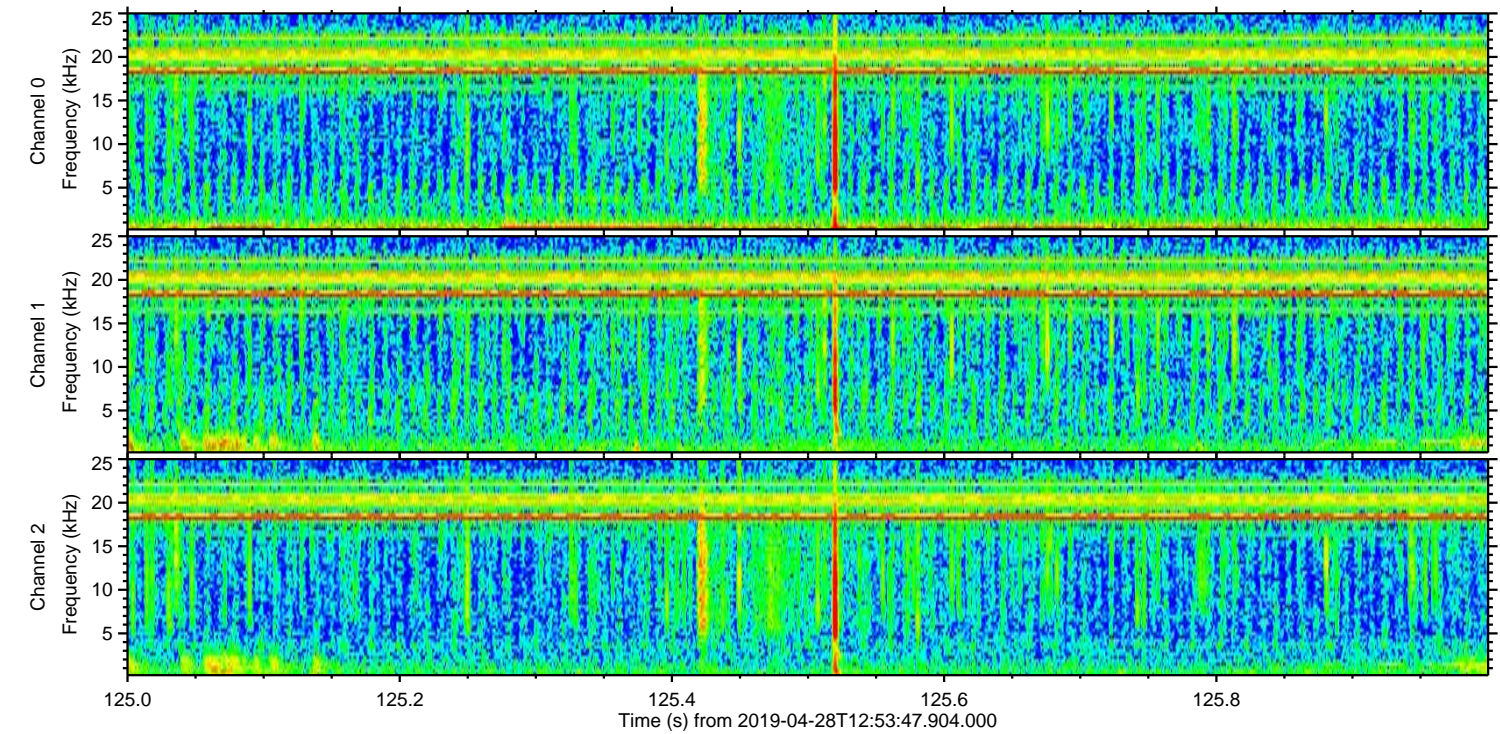
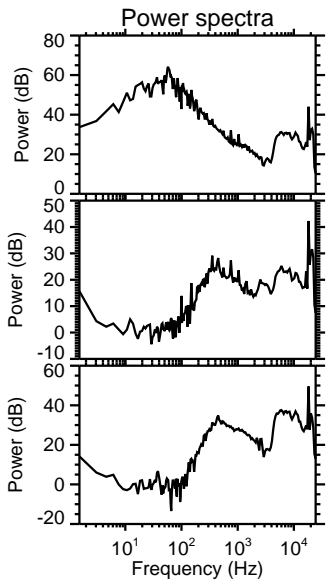
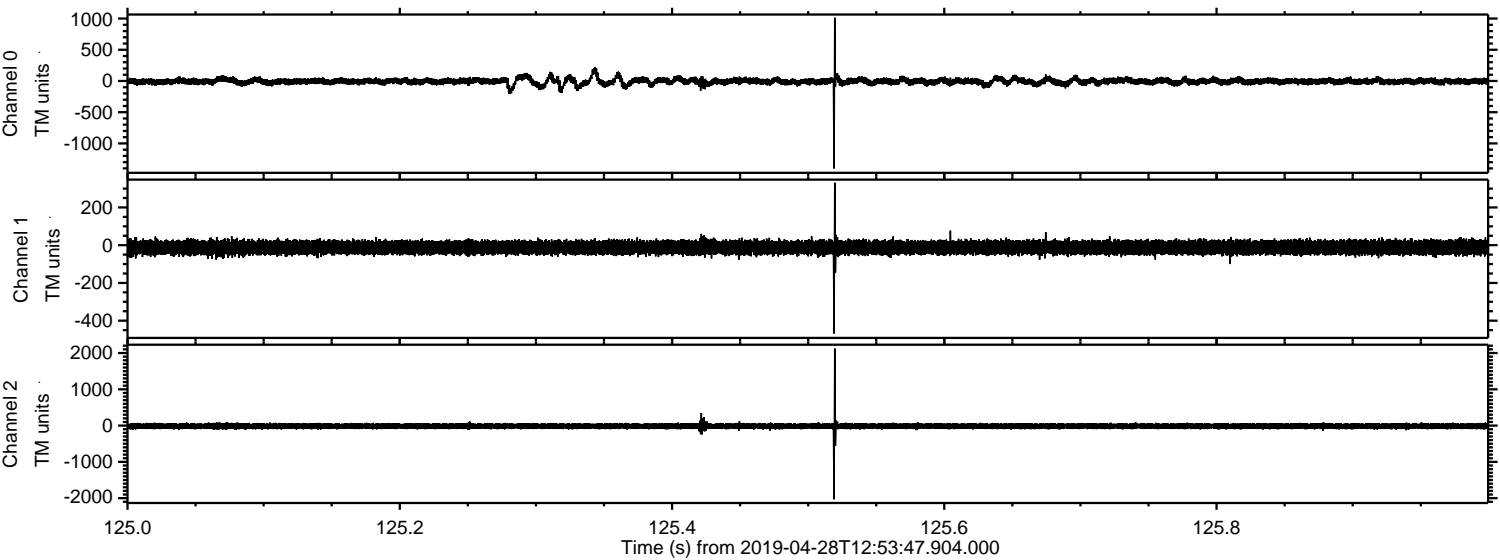


Processed Sun Apr 28 15:01:34 2019 by ELM ver.2012-10-06 from 001__elm20190428_125346__dat00.bin



ELMAVAN 3D WAVEFORMS (Measured data sampled at 50 kHz) 51000 packets of 144 samples from 2019-04-28T12:53:47.904.000. Part 126/147

Processed Sun Apr 28 15:01:35 2019 by ELM ver.2012-10-06 from 001__elm20190428_125346__dat00.bin

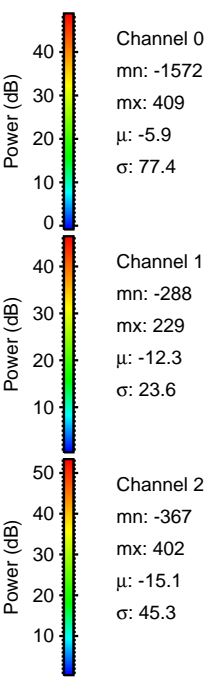
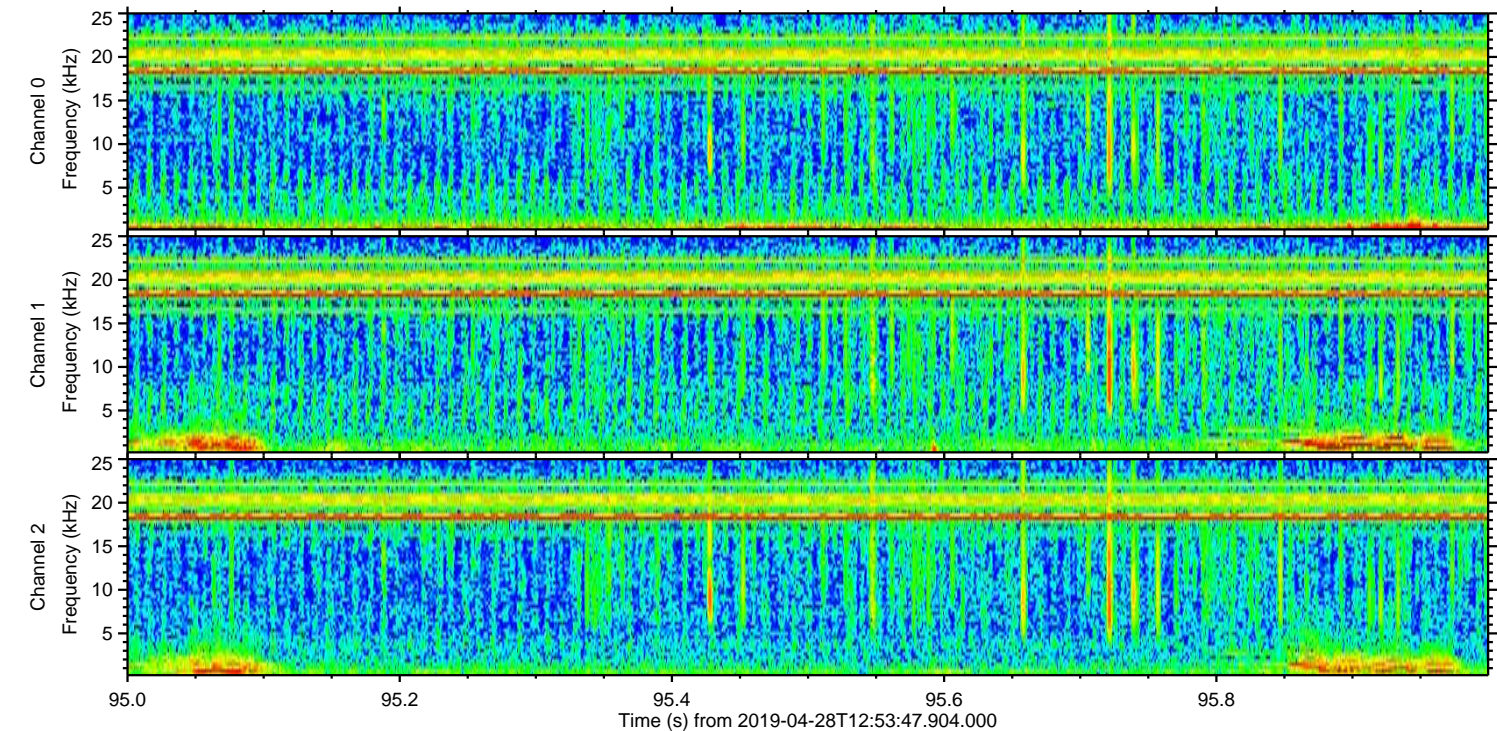
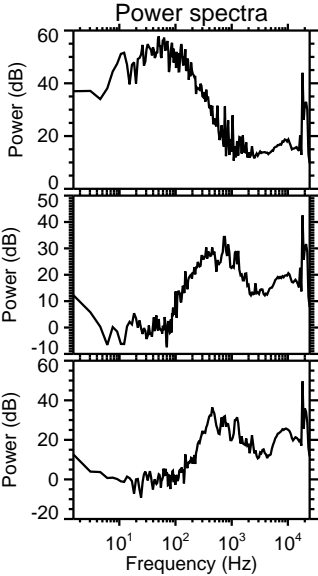
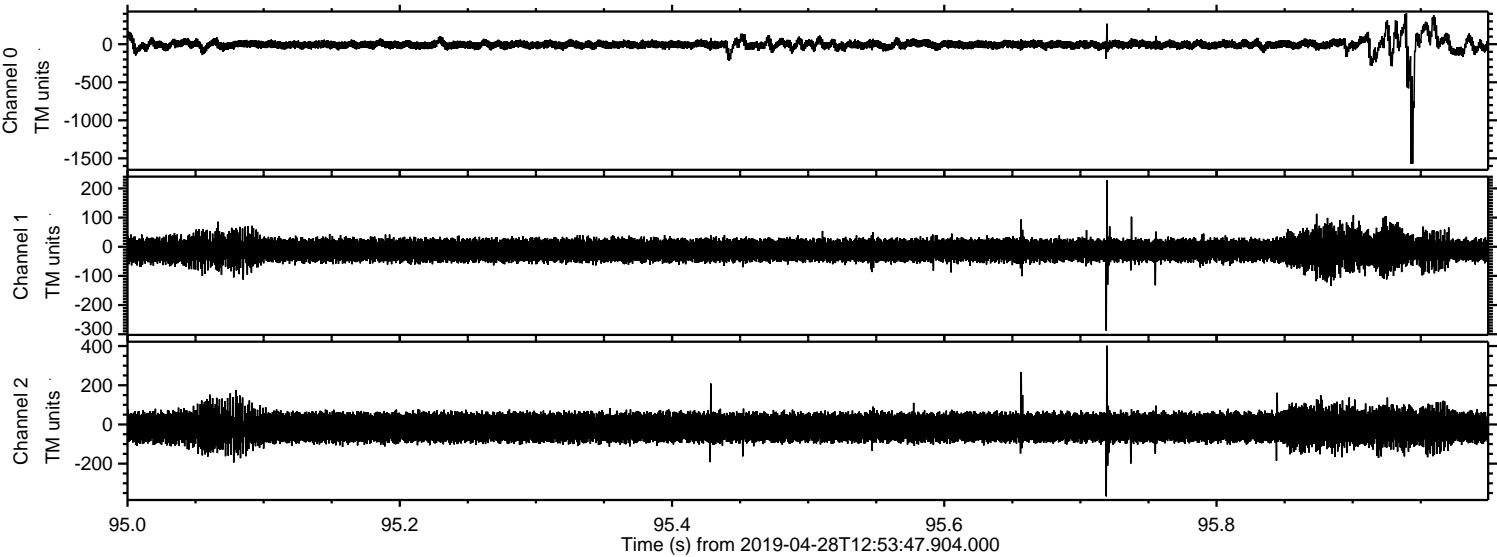


Channel 0
mn: -1401
mx: 1014
 μ : -5.9
 σ : 37.4

Channel 1
mn: -468
mx: 331
 μ : -12.2
 σ : 20.4

Channel 2
mn: -2032
mx: 2122
 μ : -15.0
 σ : 46.3

Processed Sun Apr 28 15:01:36 2019 by ELM ver.2012-10-06 from 001__elm20190428_125346__dat00.bin



Processed Sun Apr 28 15:01:36 2019 by ELM ver.2012-10-06 from 001__elm20190428_125346__dat00.bin

