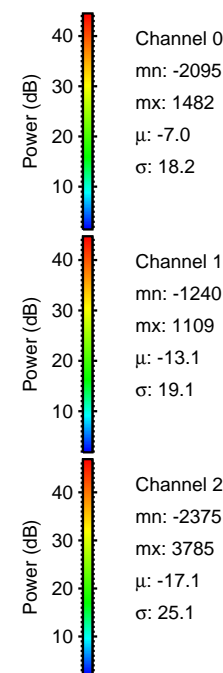
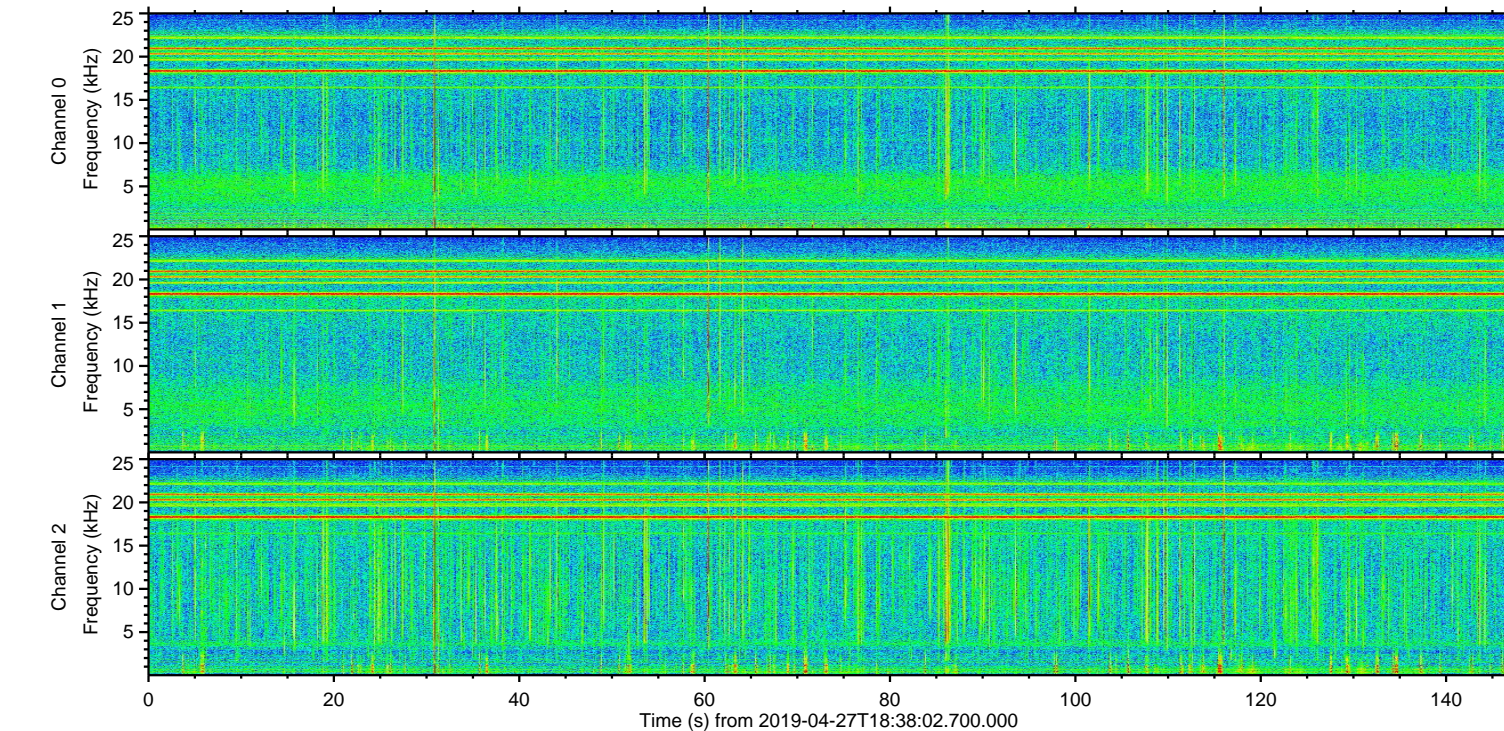
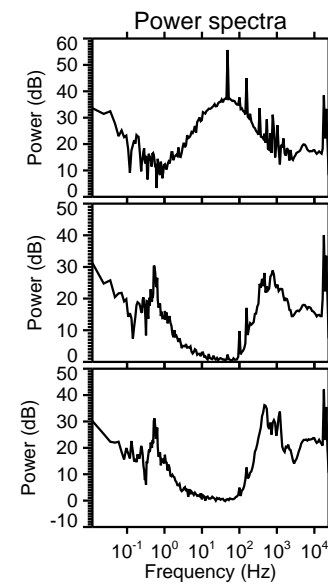
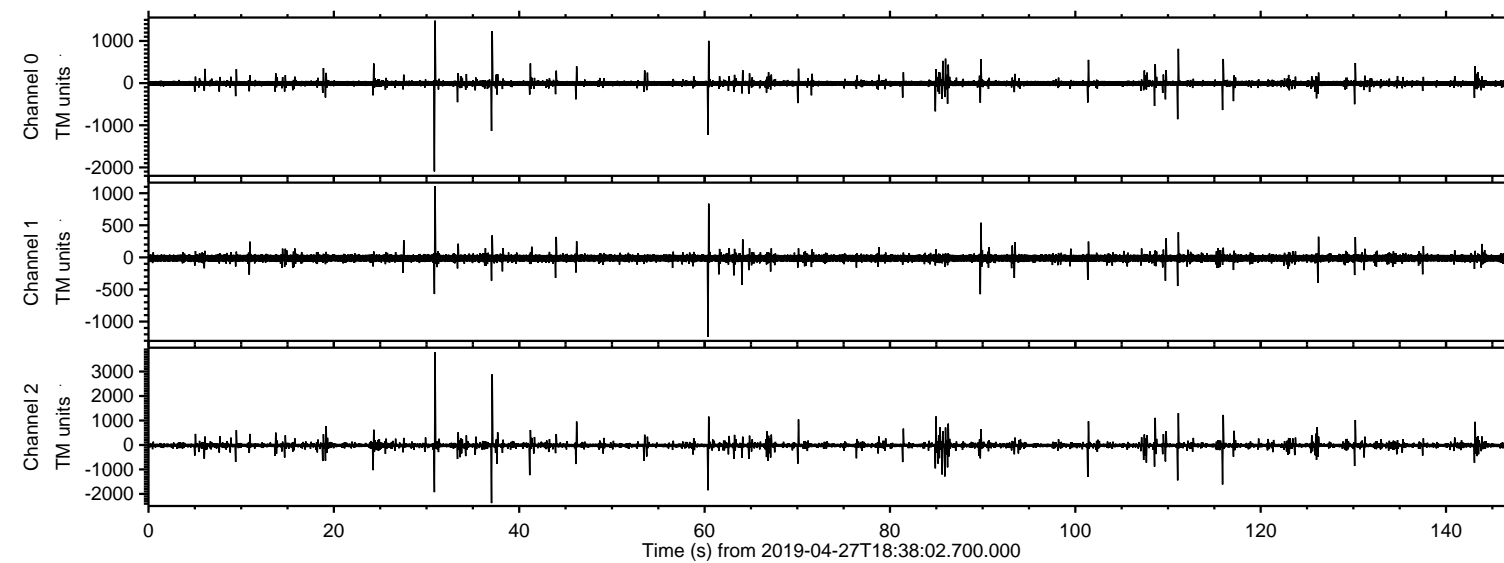
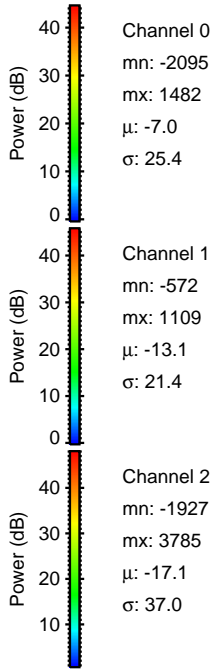
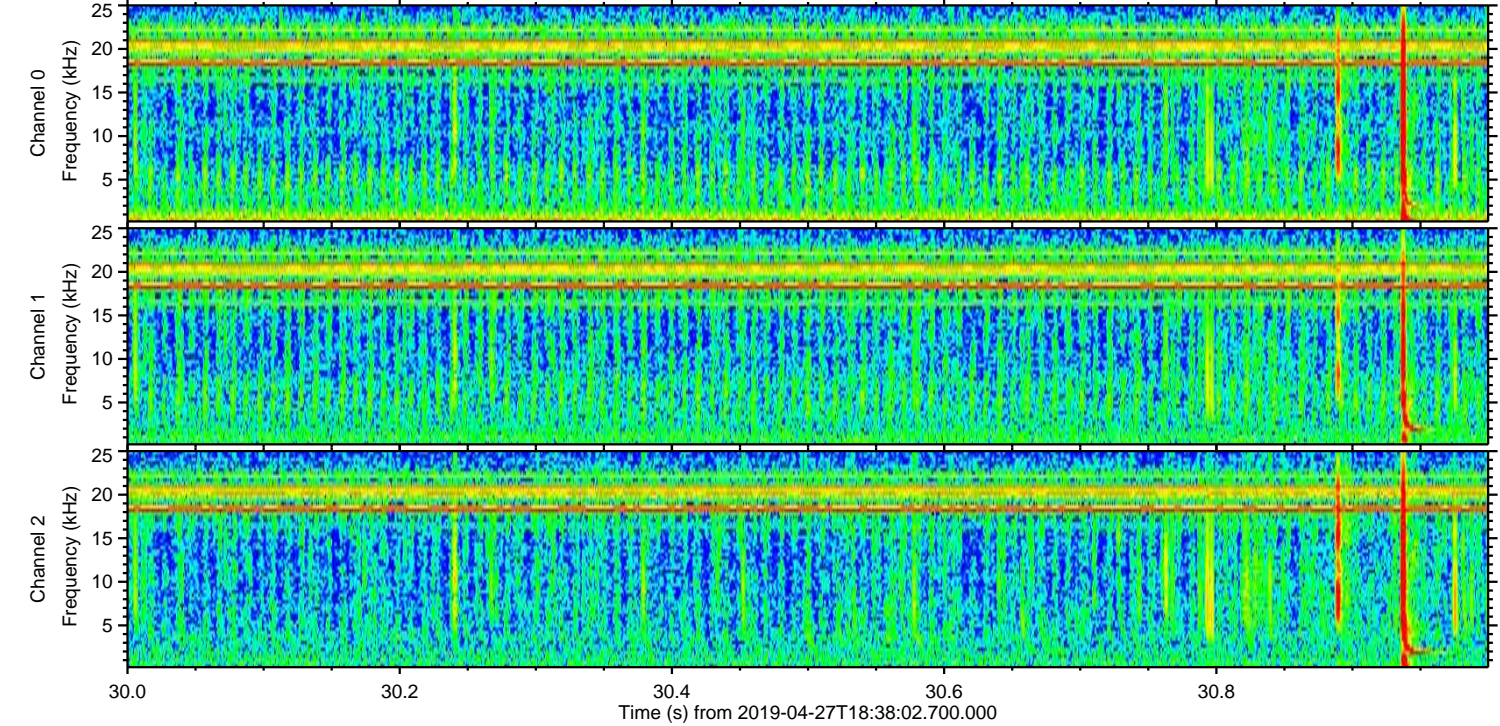
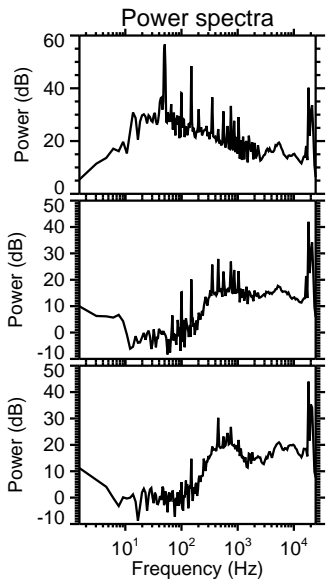
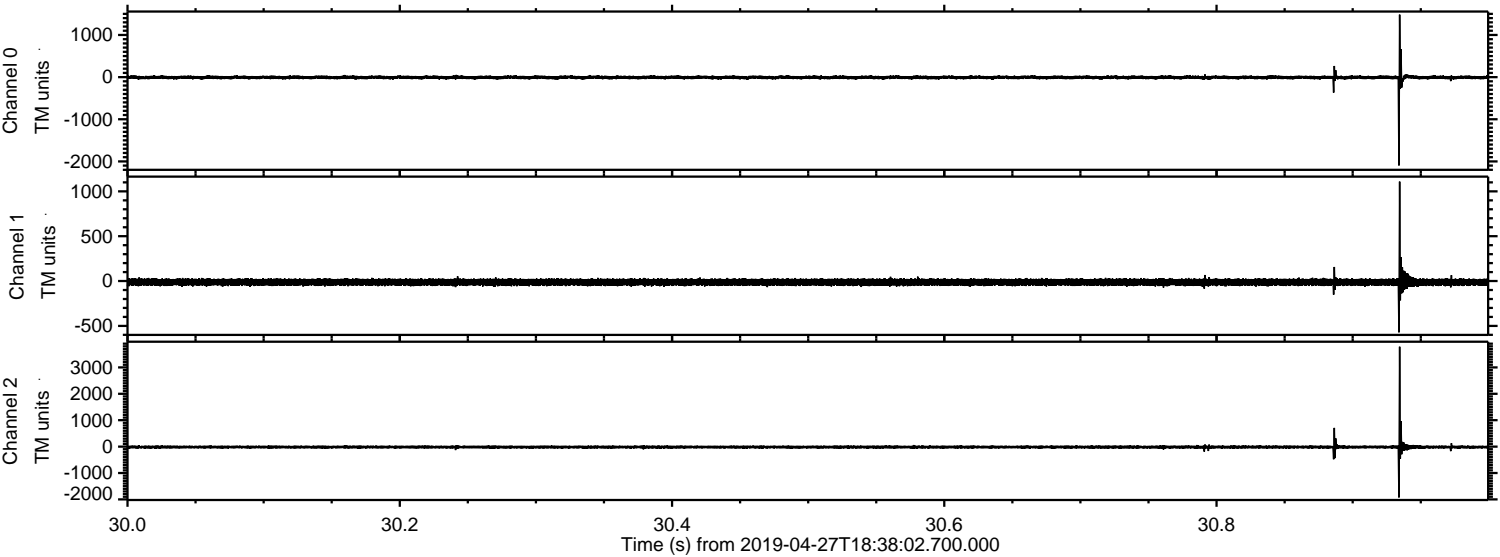


ELMAVAN 3D WAVEFORMS (Measured data sampled at 50 kHz) 51000 packets of 144 samples from 2019-04-27T18:38:02.700.000.

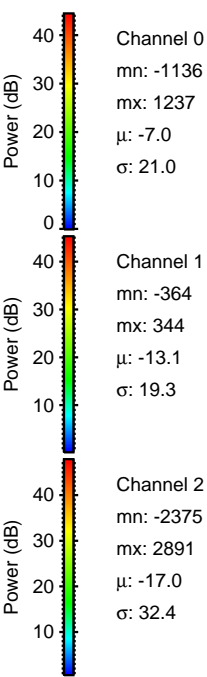
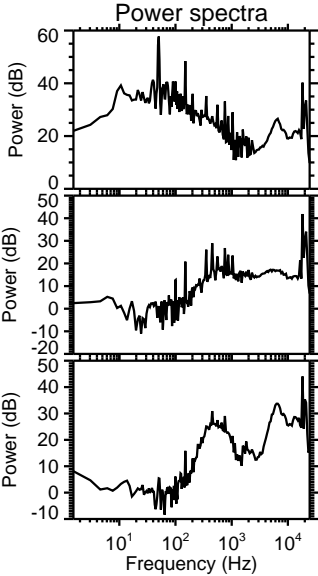
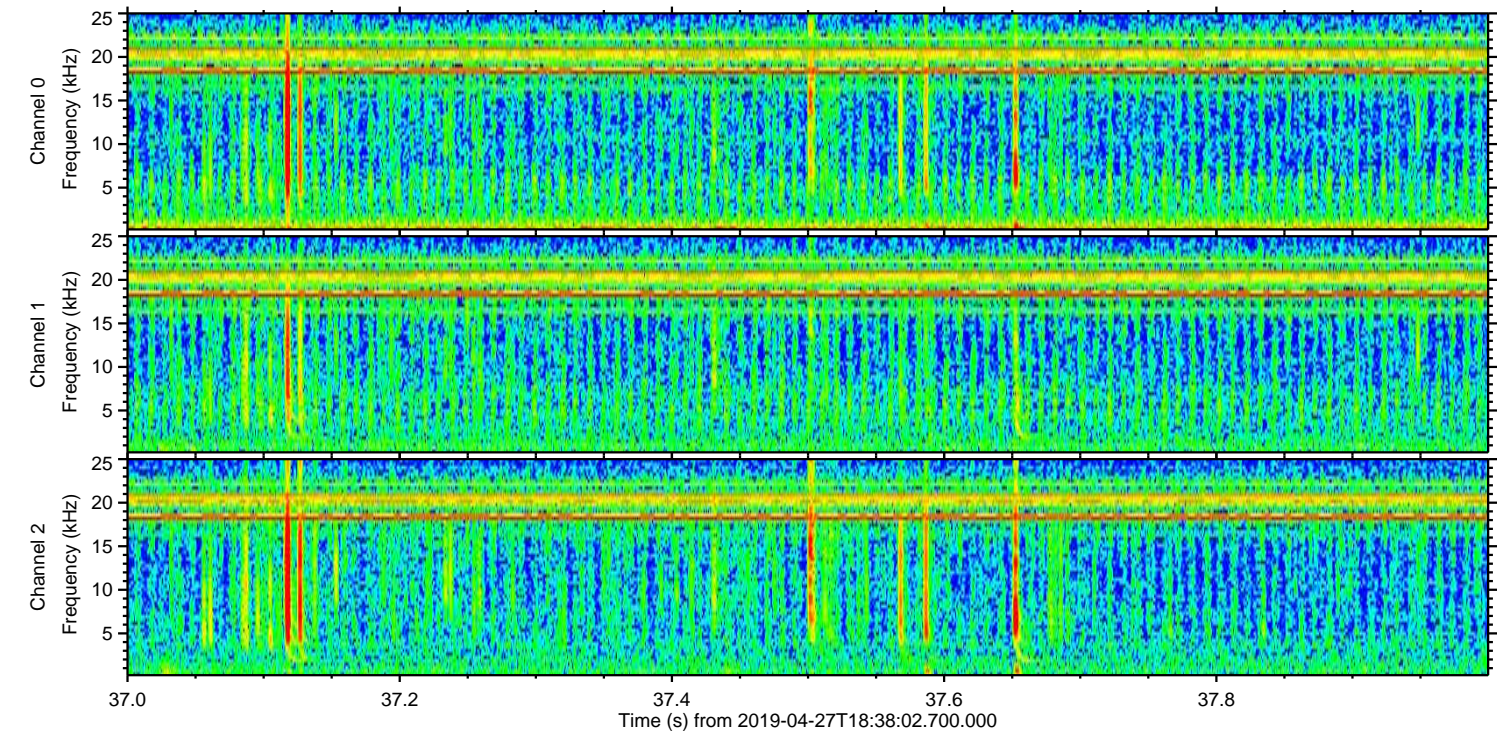
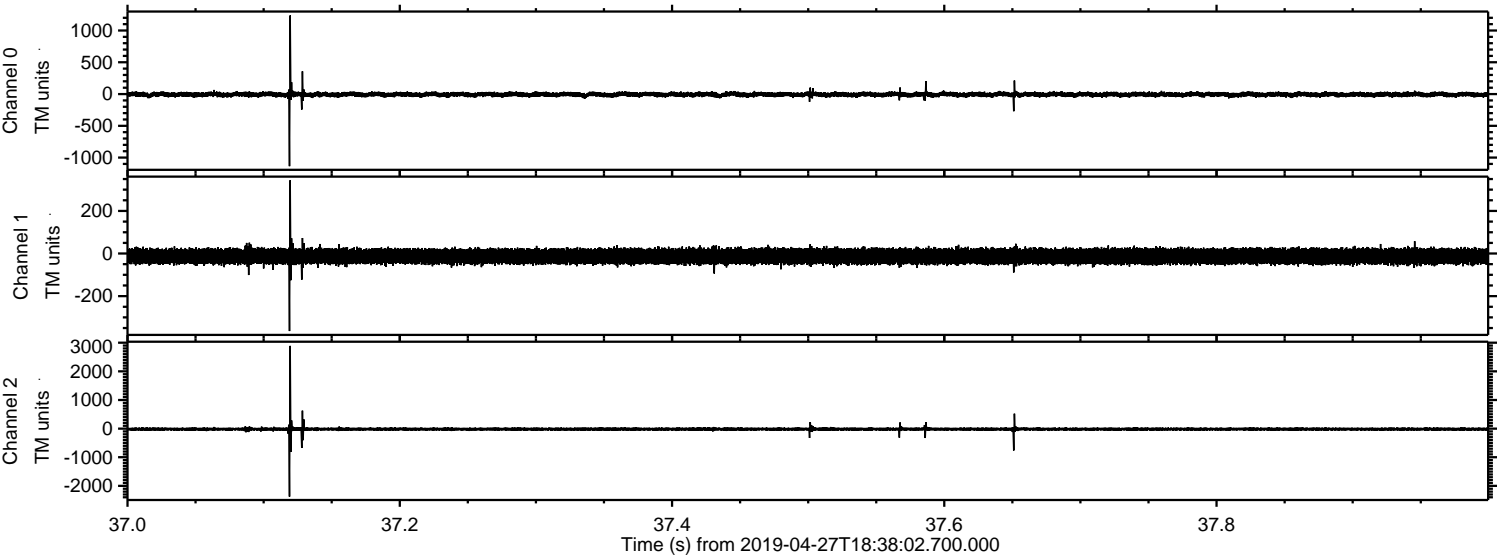
Processed Sat Apr 27 20:45:59 2019 by ELM ver.2012-10-06 from 001__elm20190427_183801__dat00.bin



Processed Sat Apr 27 20:46:05 2019 by ELM ver.2012-10-06 from 001__elm20190427_183801__dat00.bin

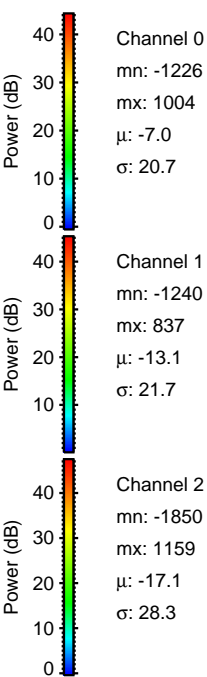
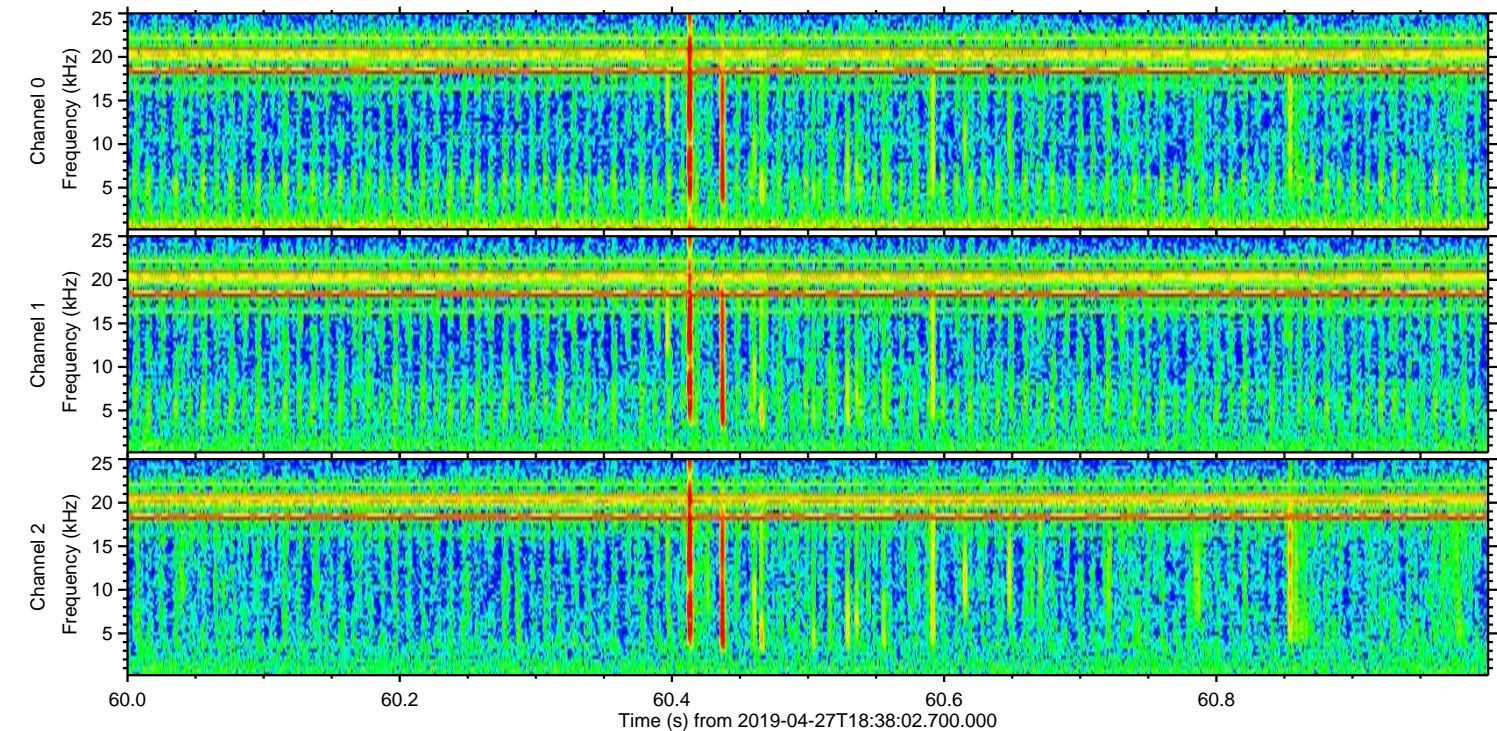
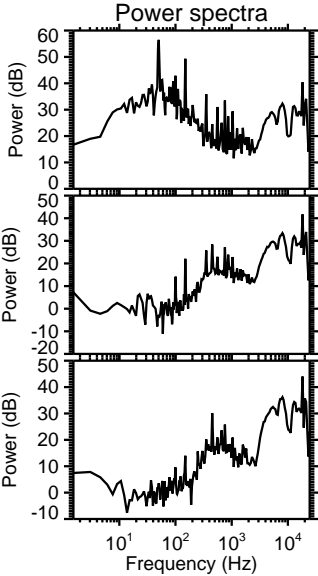
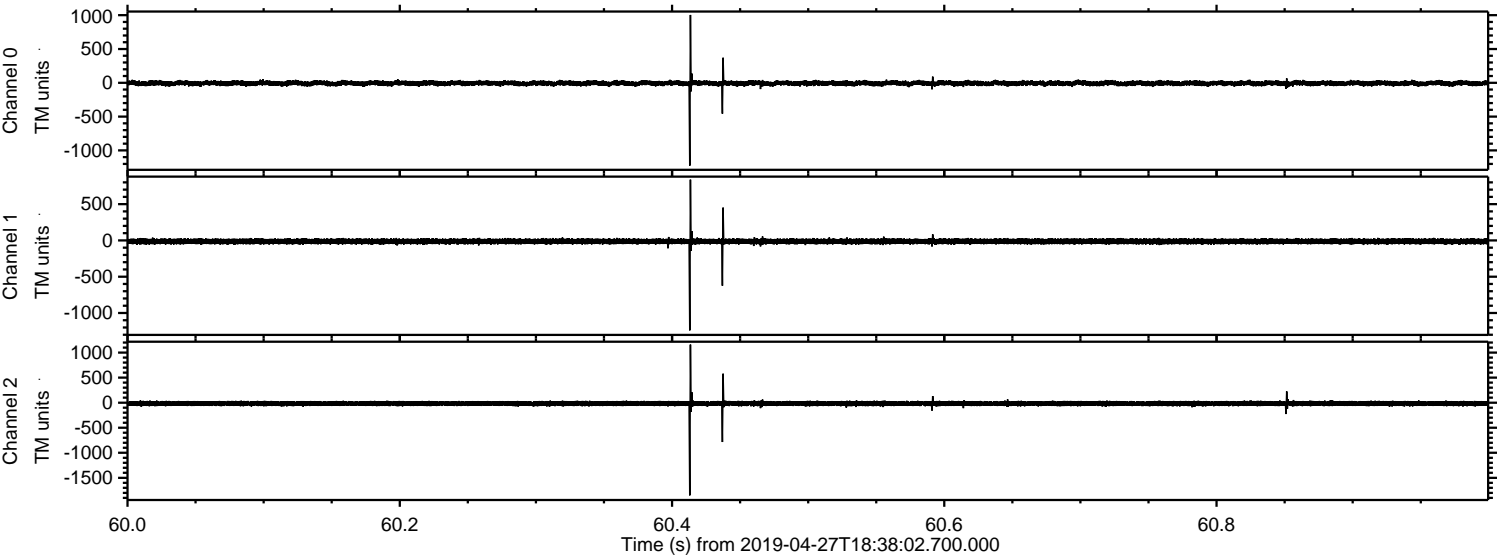


Processed Sat Apr 27 20:46:05 2019 by ELM ver.2012-10-06 from 001__elm20190427_183801__dat00.bin



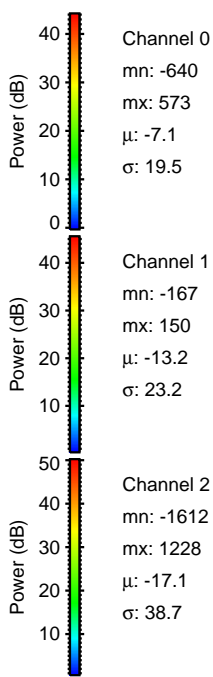
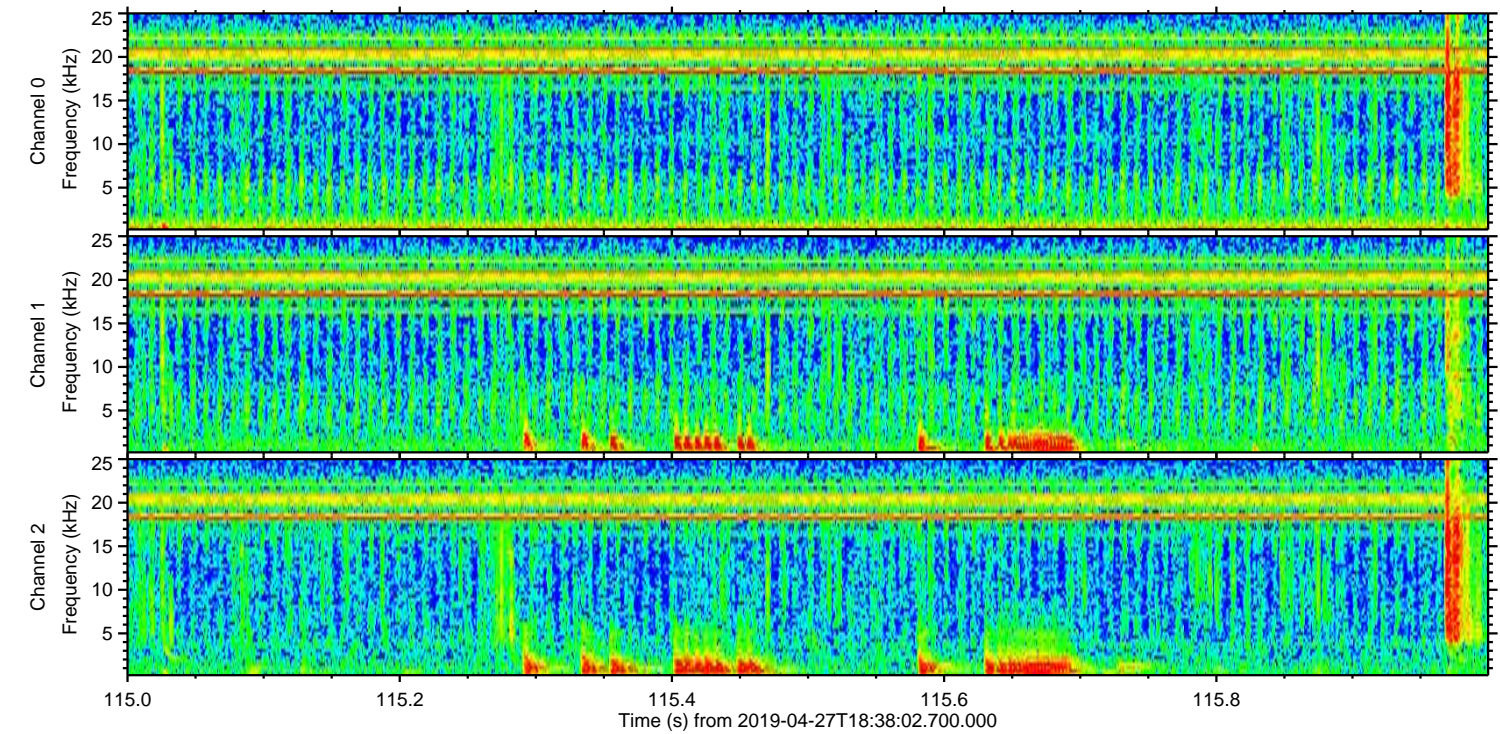
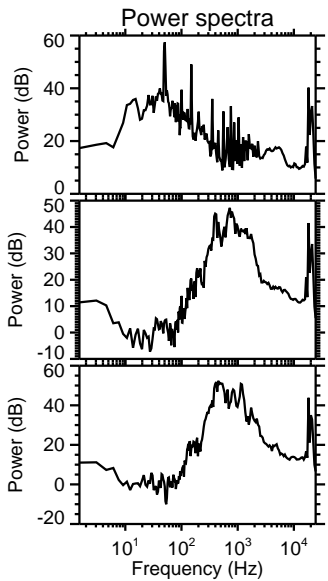
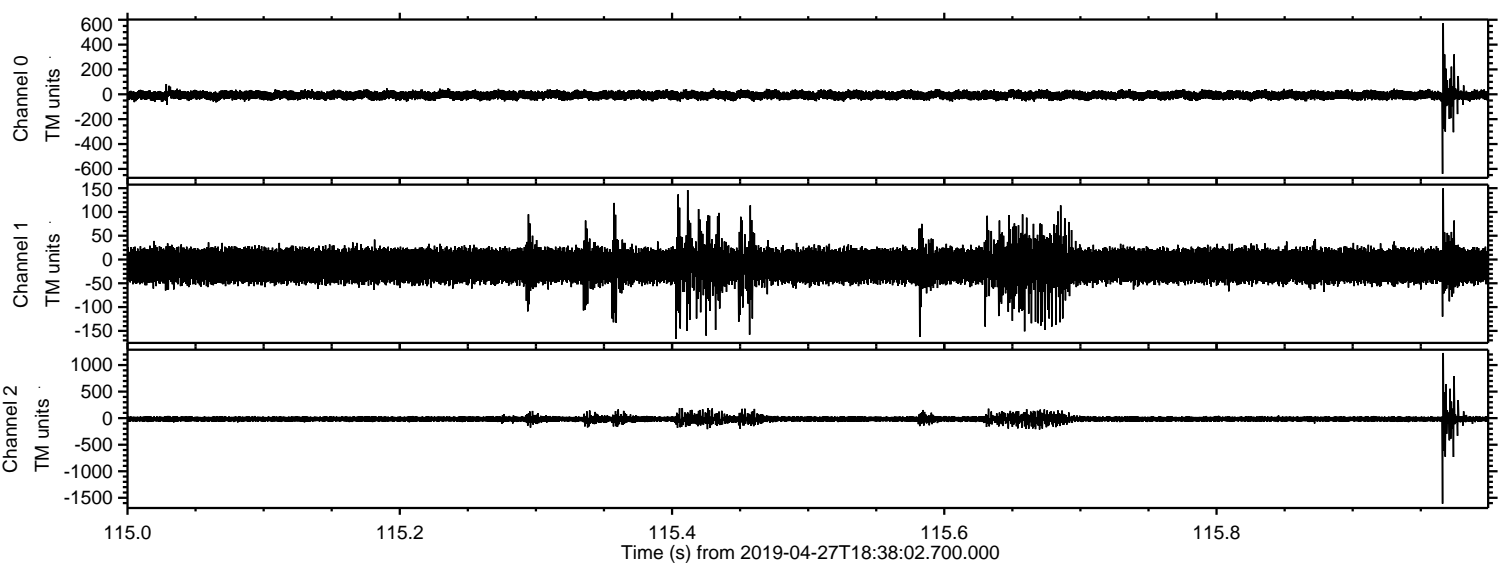
ELMAVAN 3D WAVEFORMS (Measured data sampled at 50 kHz) 51000 packets of 144 samples from 2019-04-27T18:38:02.700.000. Part 61/147

Processed Sat Apr 27 20:46:06 2019 by ELM ver.2012-10-06 from 001__elm20190427_183801__dat00.bin



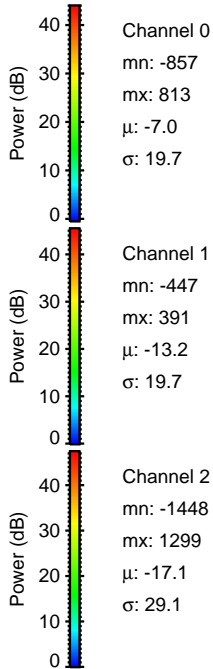
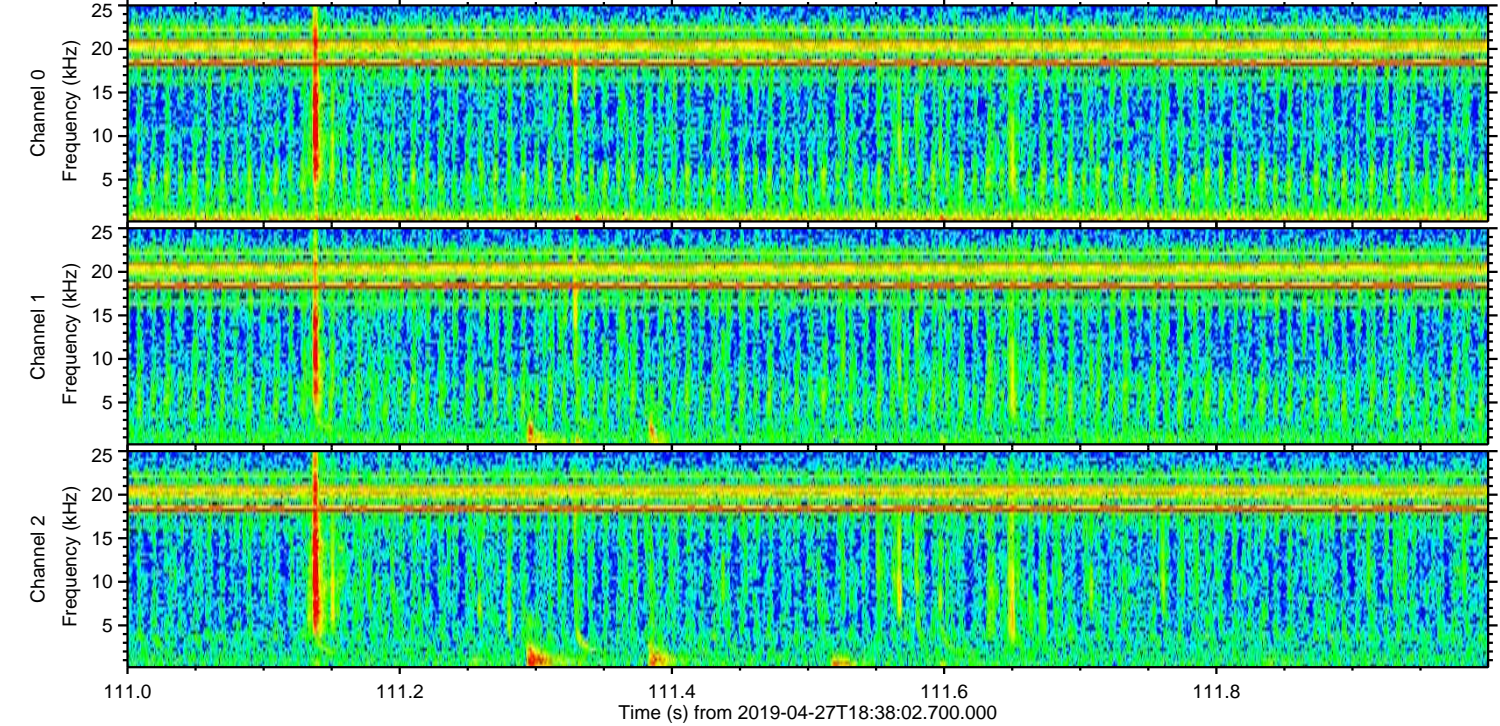
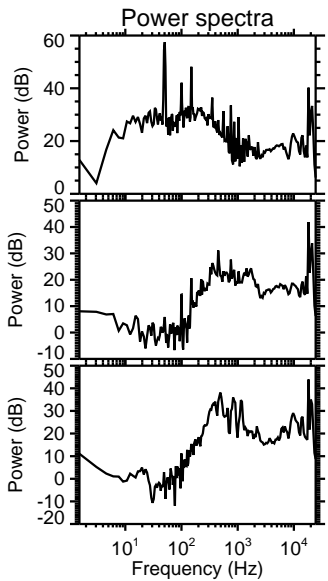
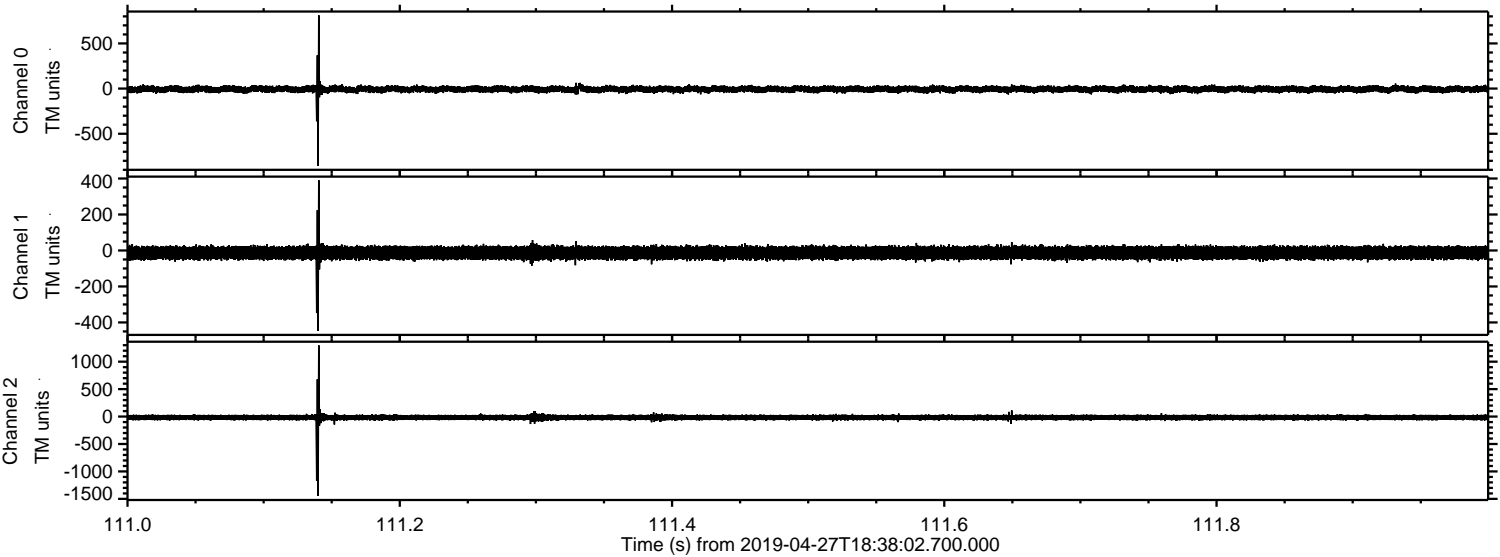
ELMAVAN 3D WAVEFORMS (Measured data sampled at 50 kHz) 51000 packets of 144 samples from 2019-04-27T18:38:02.700.000. Part 116/147

Processed Sat Apr 27 20:46:07 2019 by ELM ver.2012-10-06 from 001__elm20190427_183801__dat00.bin



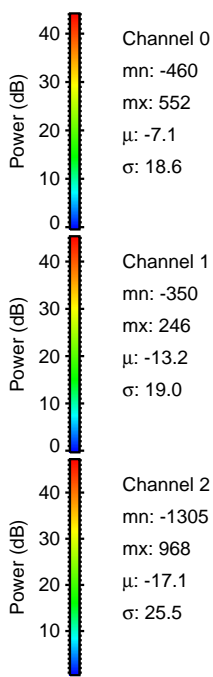
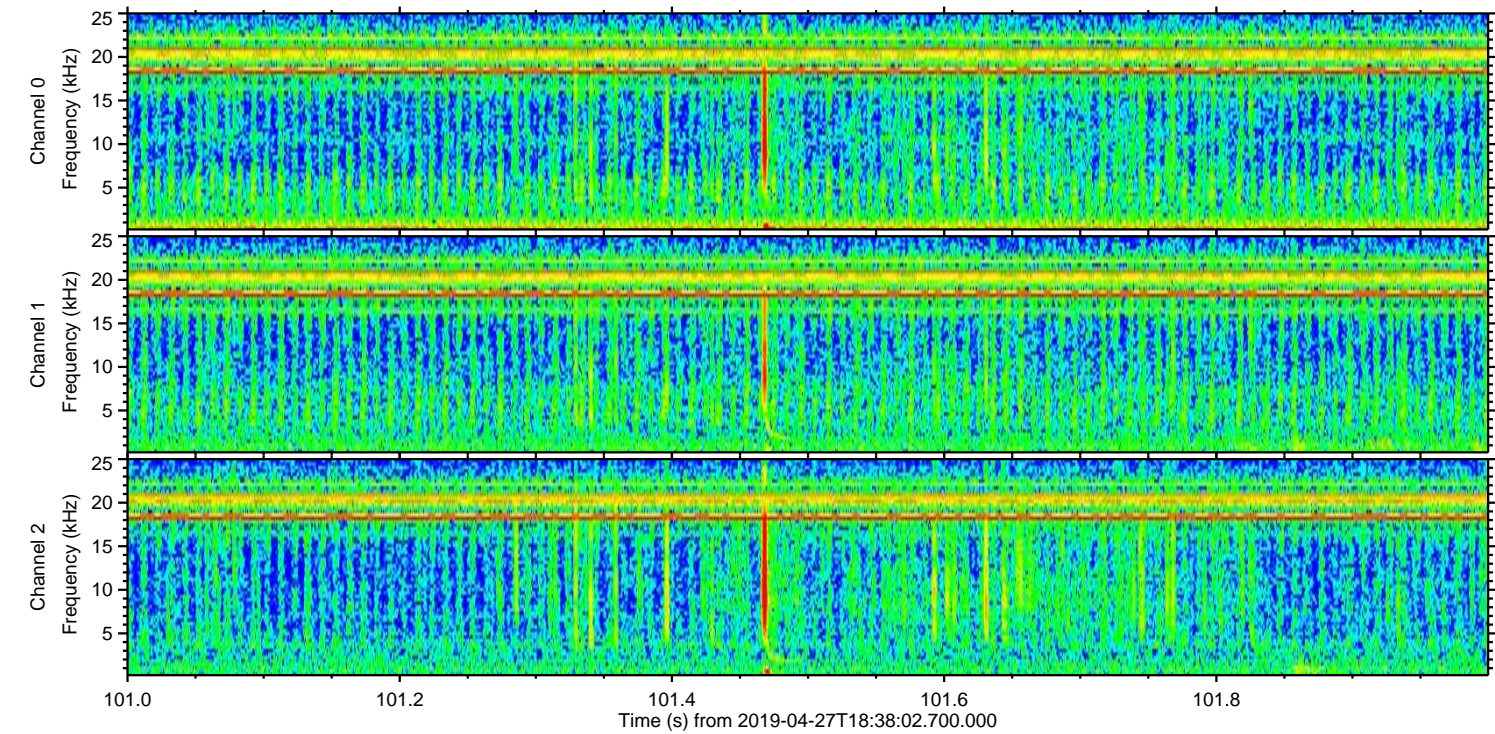
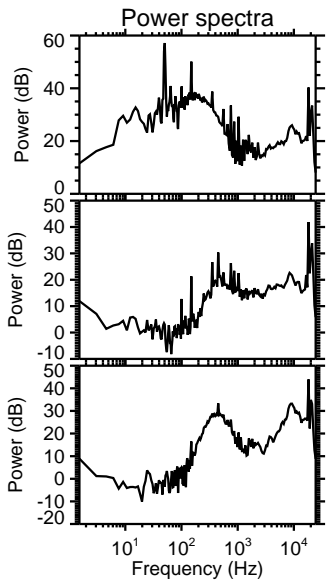
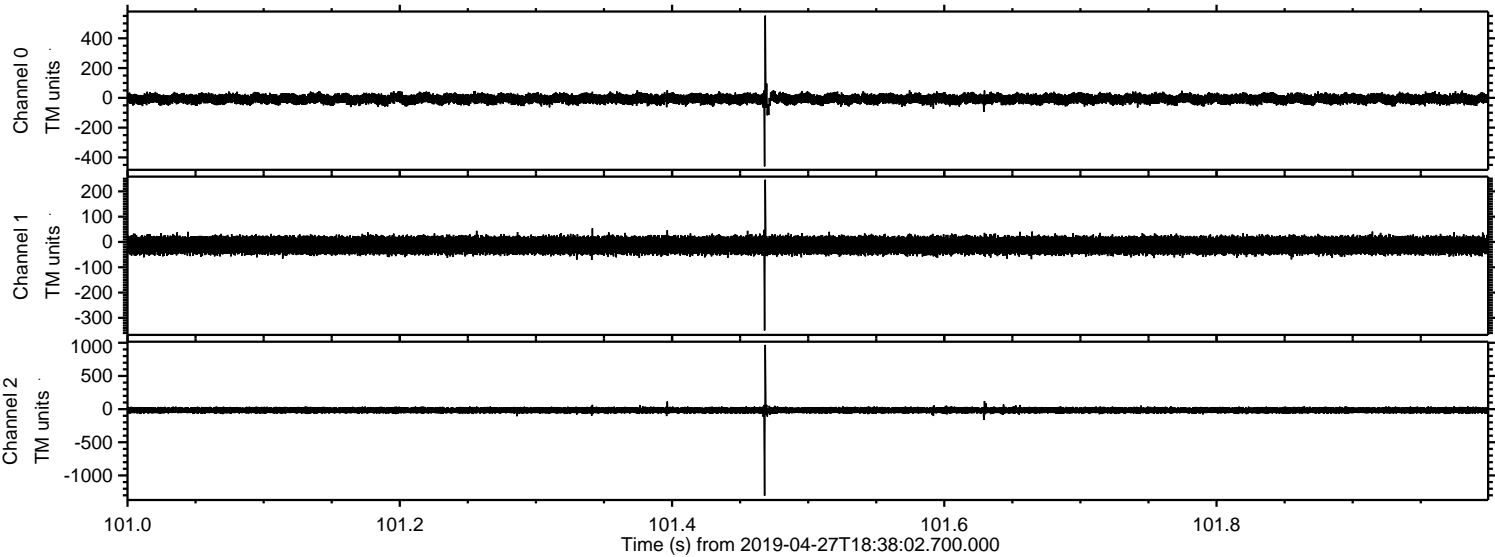
ELMAVAN 3D WAVEFORMS (Measured data sampled at 50 kHz) 51000 packets of 144 samples from 2019-04-27T18:38:02.700.000. Part 112/147

Processed Sat Apr 27 20:46:07 2019 by ELM ver.2012-10-06 from 001__elm20190427_183801__dat00.bin

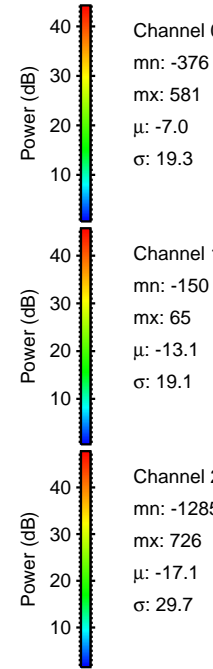
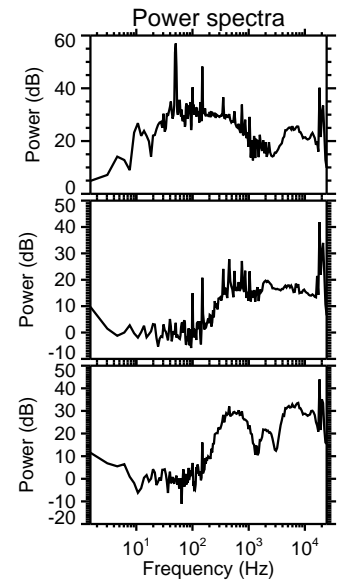
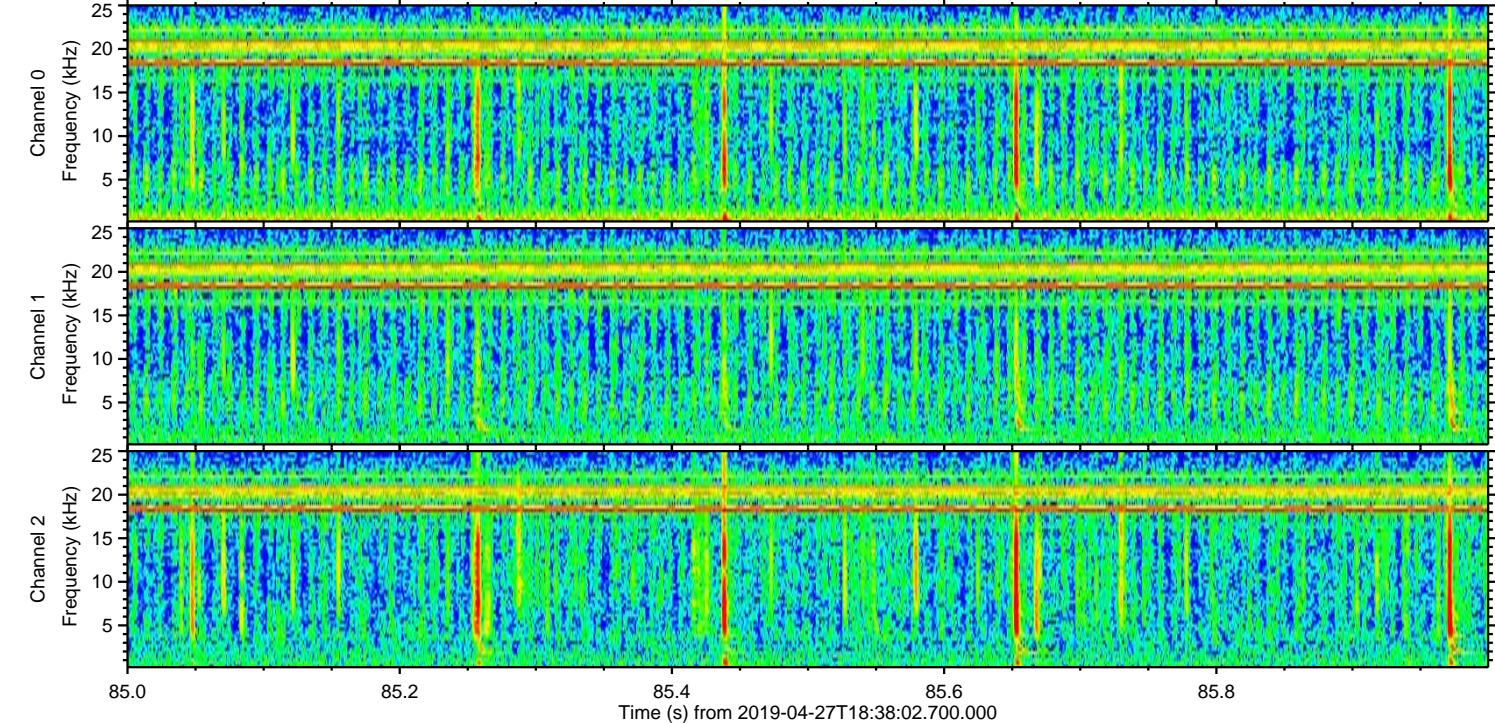
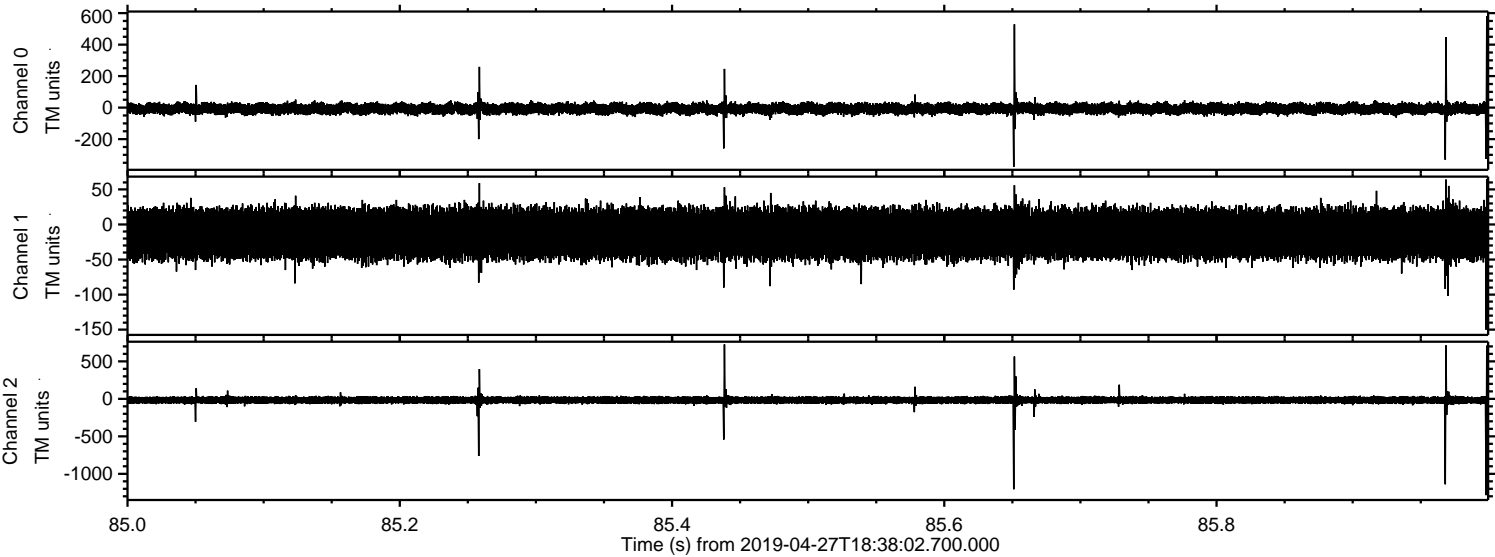


ELMAVAN 3D WAVEFORMS (Measured data sampled at 50 kHz) 51000 packets of 144 samples from 2019-04-27T18:38:02.700.000. Part 102/147

Processed Sat Apr 27 20:46:08 2019 by ELM ver.2012-10-06 from 001__elm20190427_183801__dat00.bin



Processed Sat Apr 27 20:46:08 2019 by ELM ver.2012-10-06 from 001__elm20190427_183801__dat00.bin

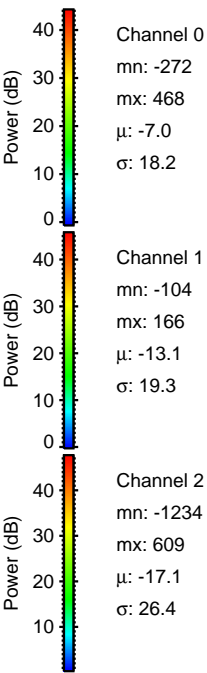
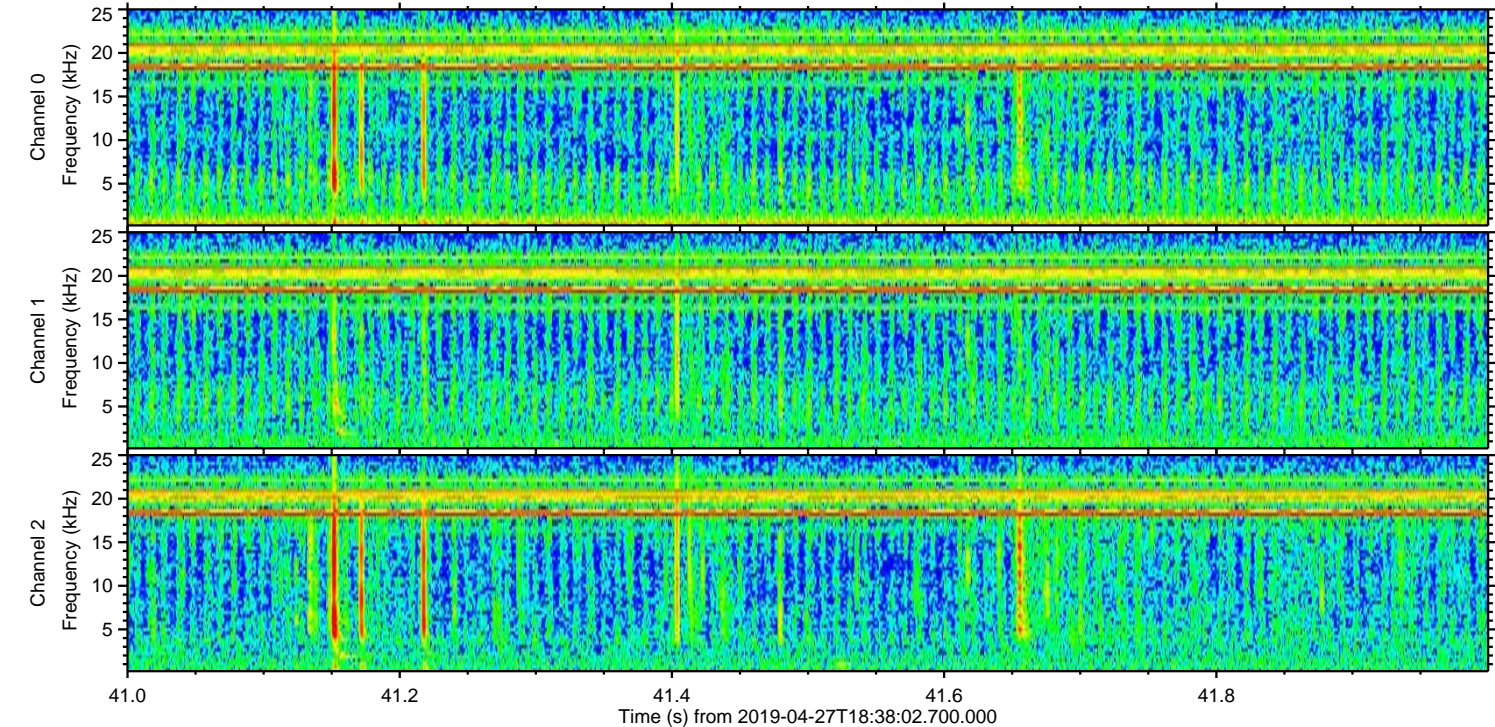
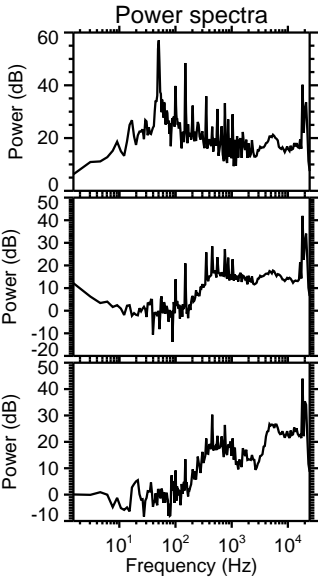
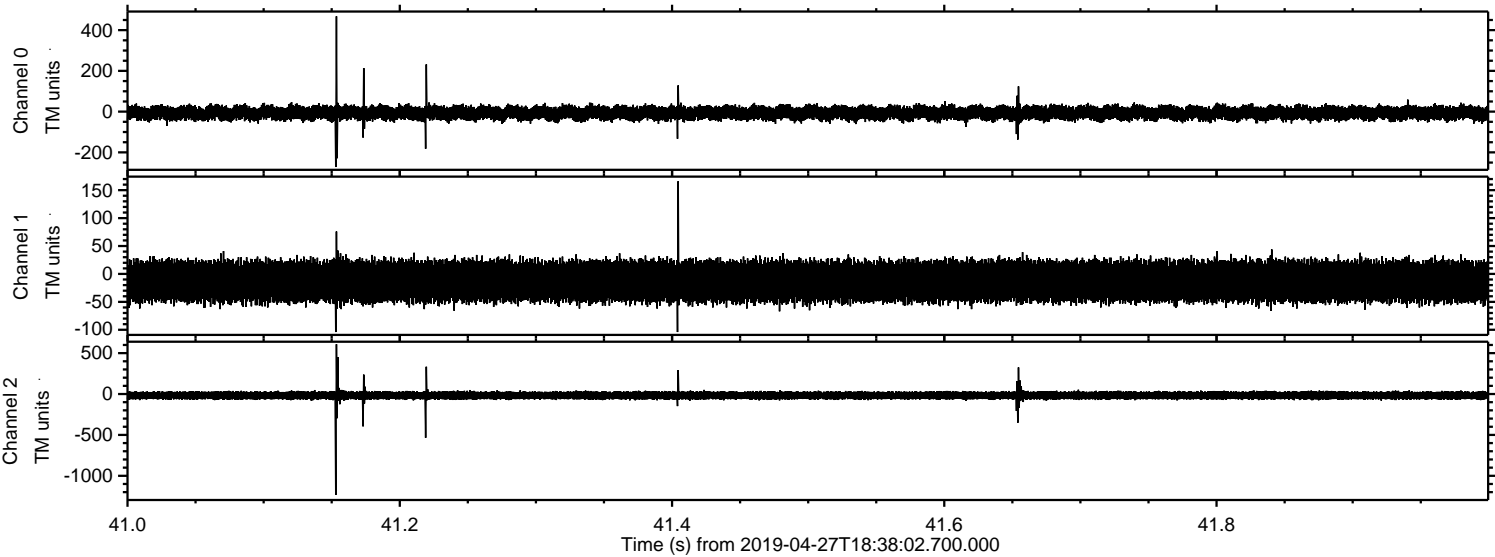


Channel 0
mn: -376
mx: 581
 μ : -7.0
 σ : 19.3

Channel 1
mn: -150
mx: 65
 μ : -13.1
 σ : 19.1

Channel 2
mn: -1285
mx: 726
 μ : -17.1
 σ : 29.7

Processed Sat Apr 27 20:46:09 2019 by ELM ver.2012-10-06 from 001__elm20190427_183801__dat00.bin



Processed Sat Apr 27 20:46:10 2019 by ELM ver.2012-10-06 from 001__elm20190427_183801__dat00.bin

