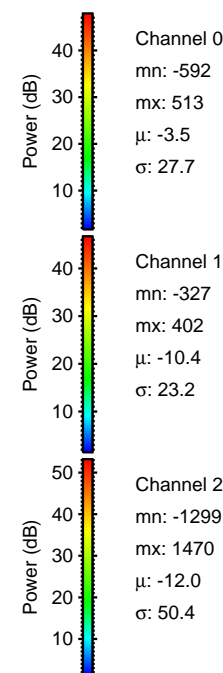
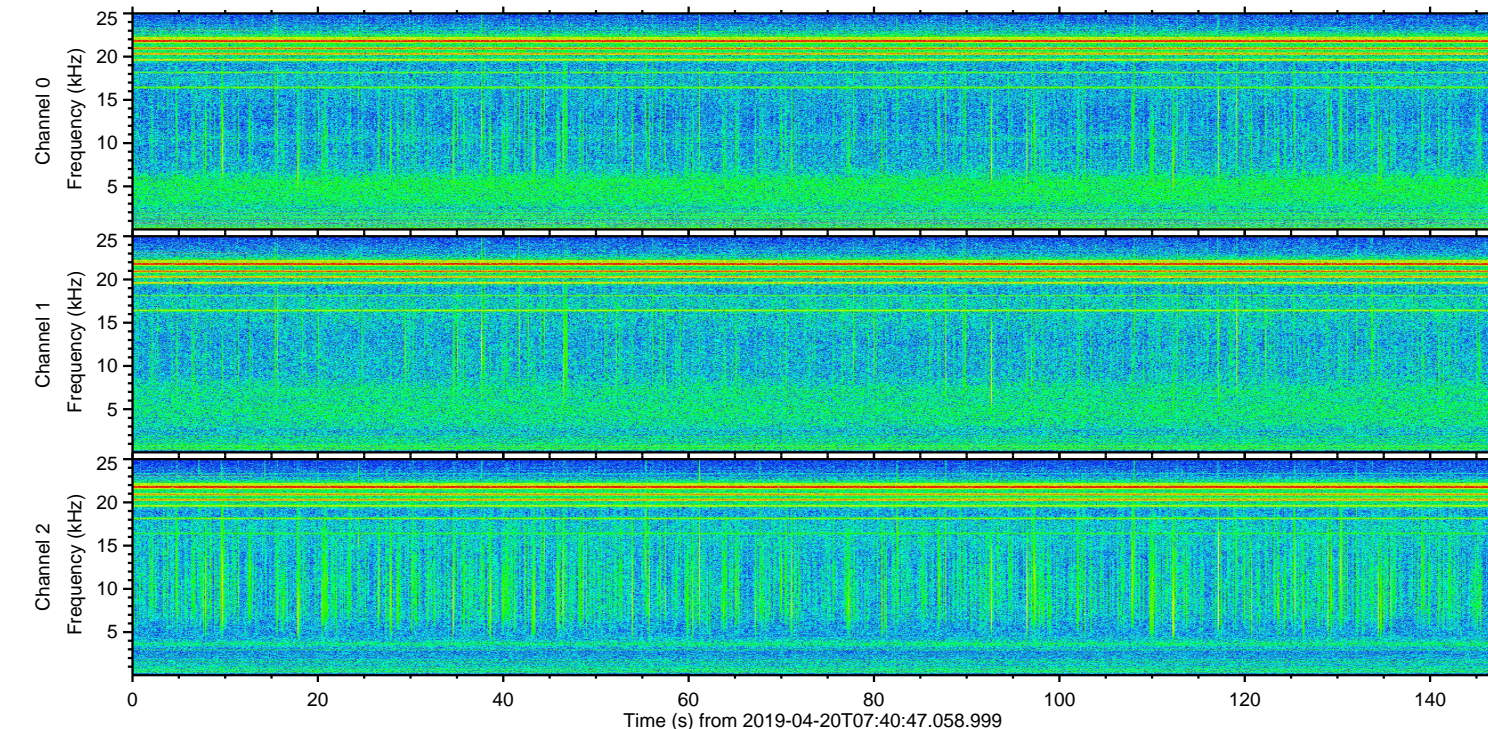
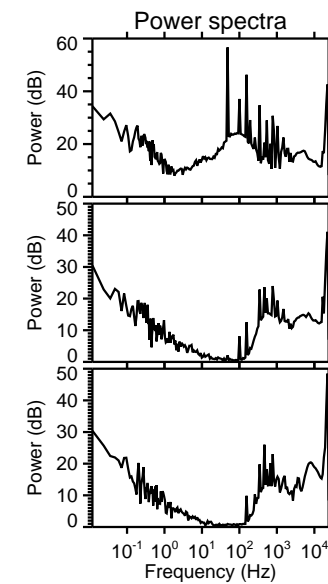
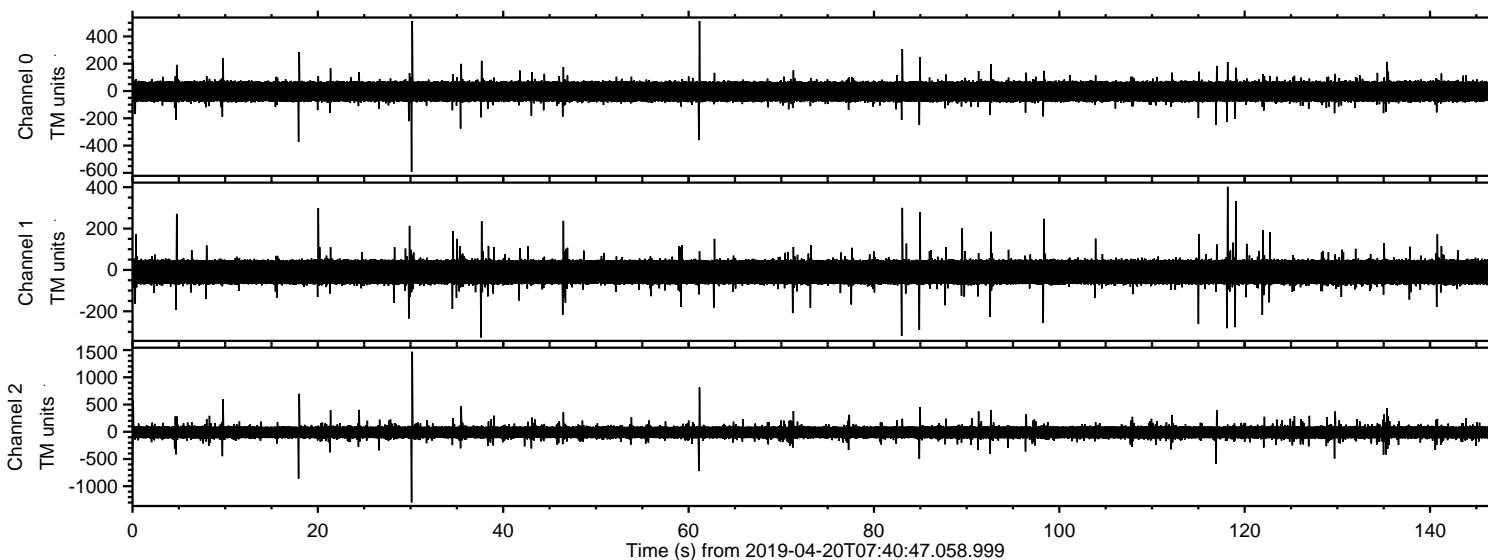
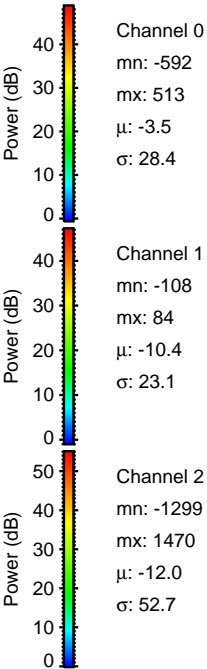
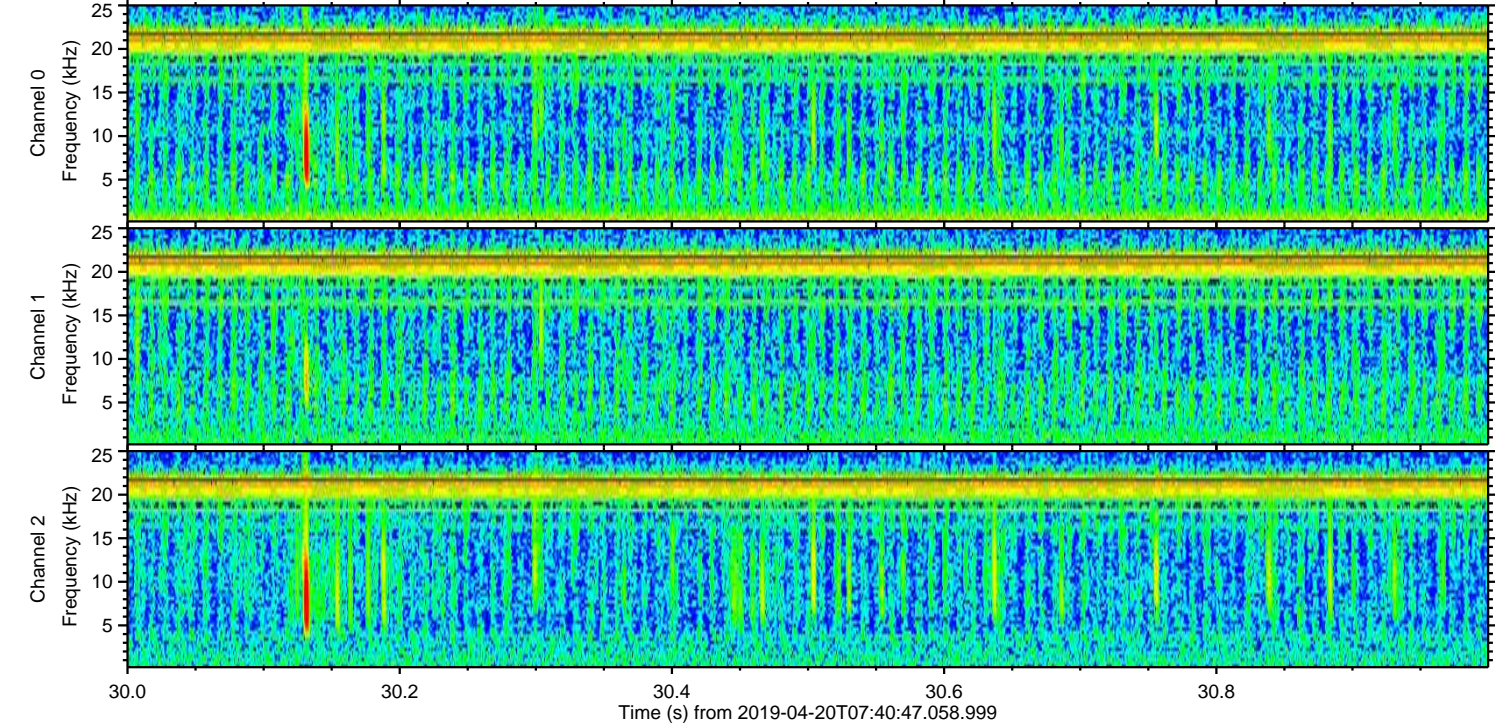
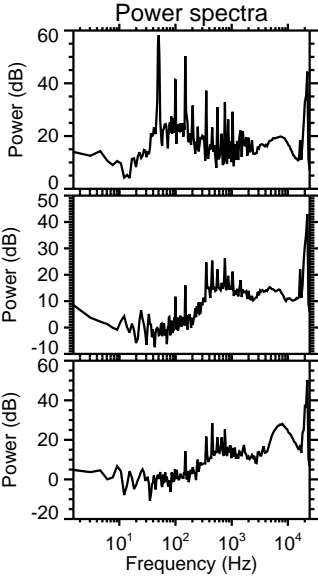
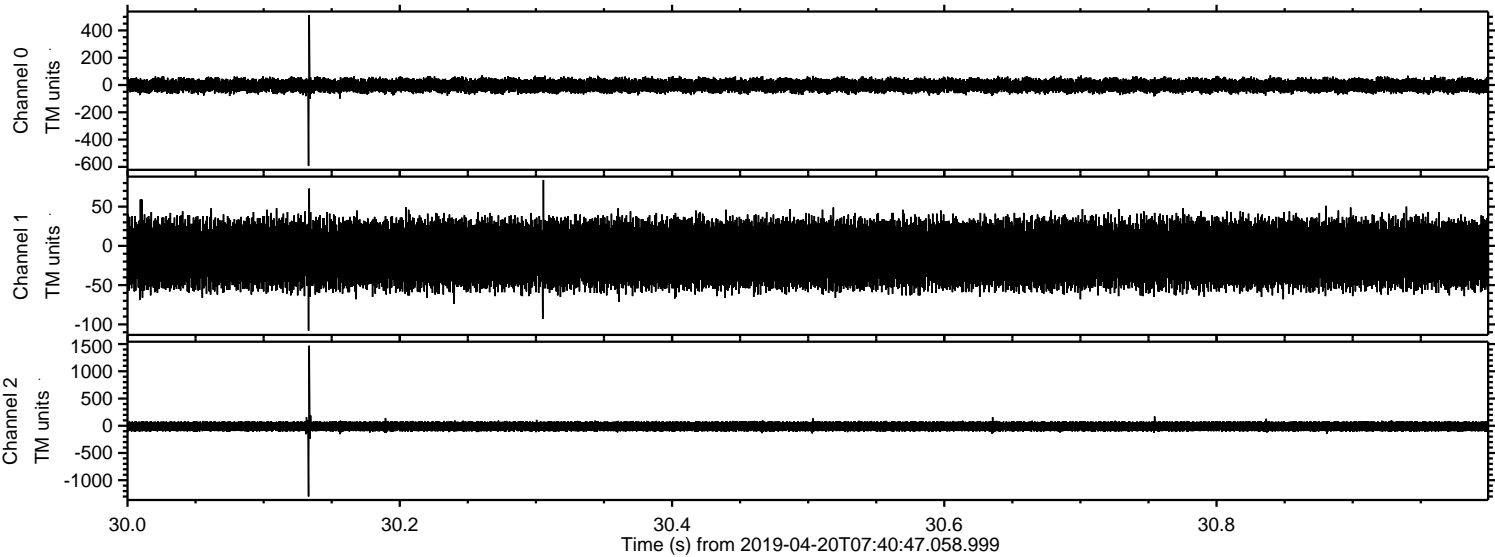


# ELMAVAN 3D WAVEFORMS (Measured data sampled at 50 kHz) 51000 packets of 144 samples from 2019-04-20T07:40:47.058.999.

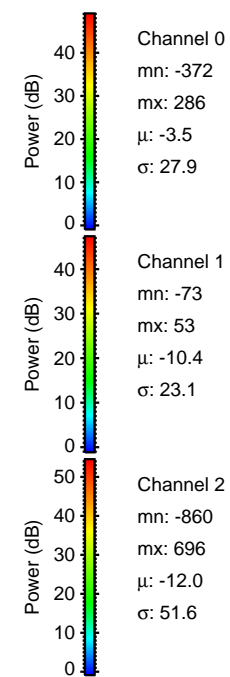
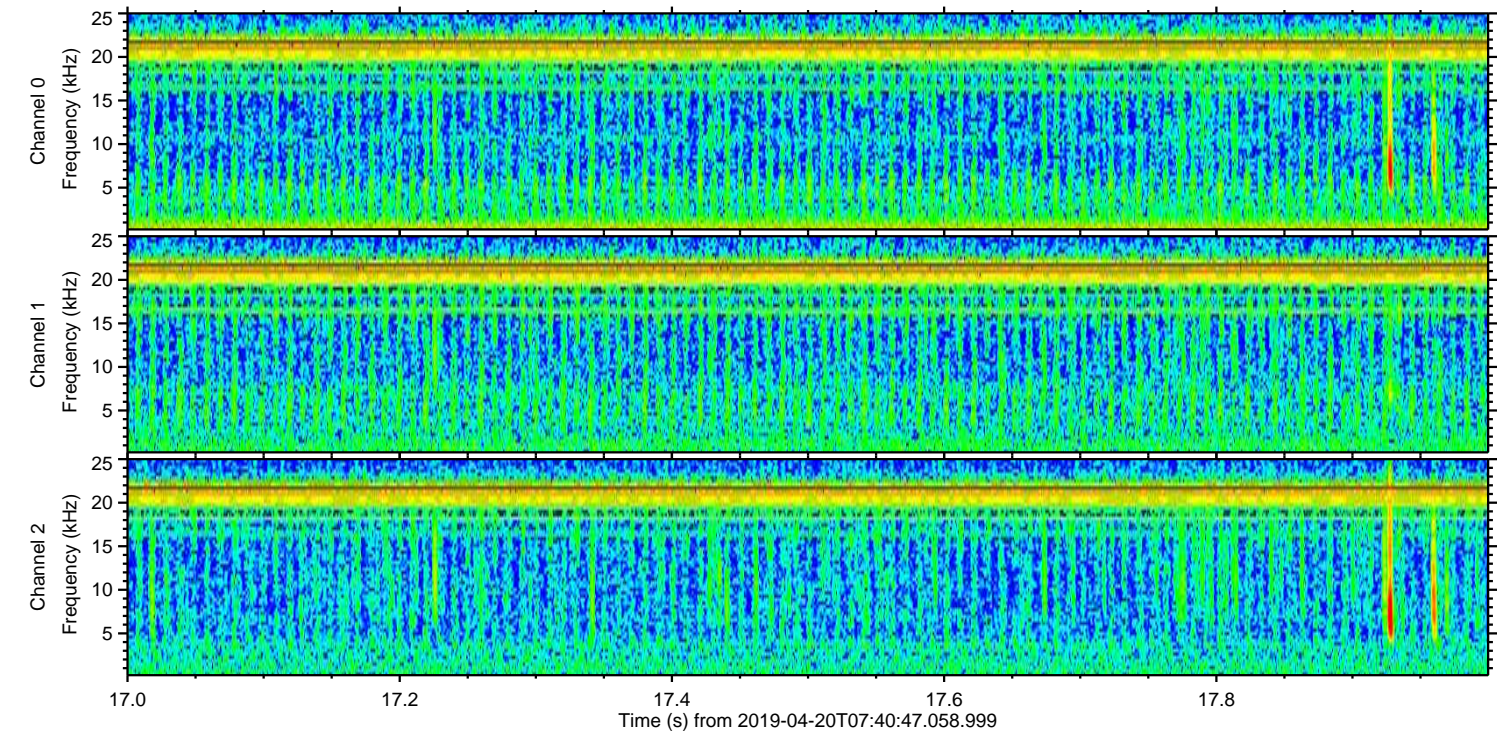
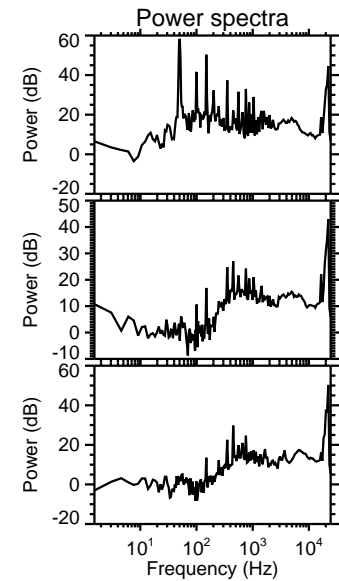
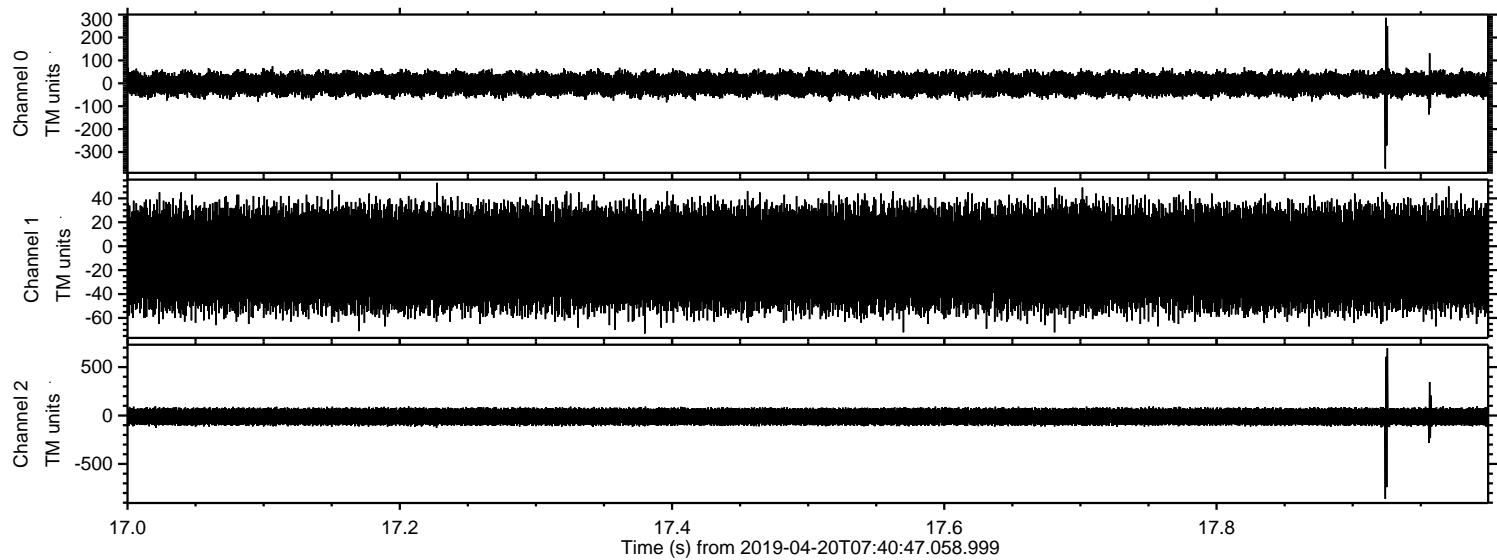
Processed Sat Apr 20 09:48:00 2019 by ELM ver.2012-10-06 from 001\_\_elm20190420\_074046\_\_dat00.bin



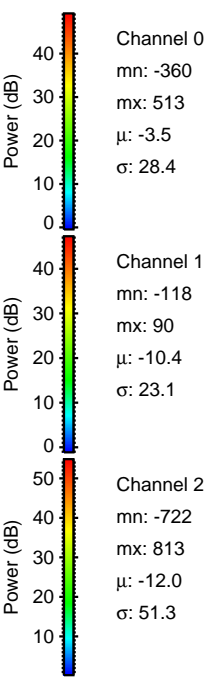
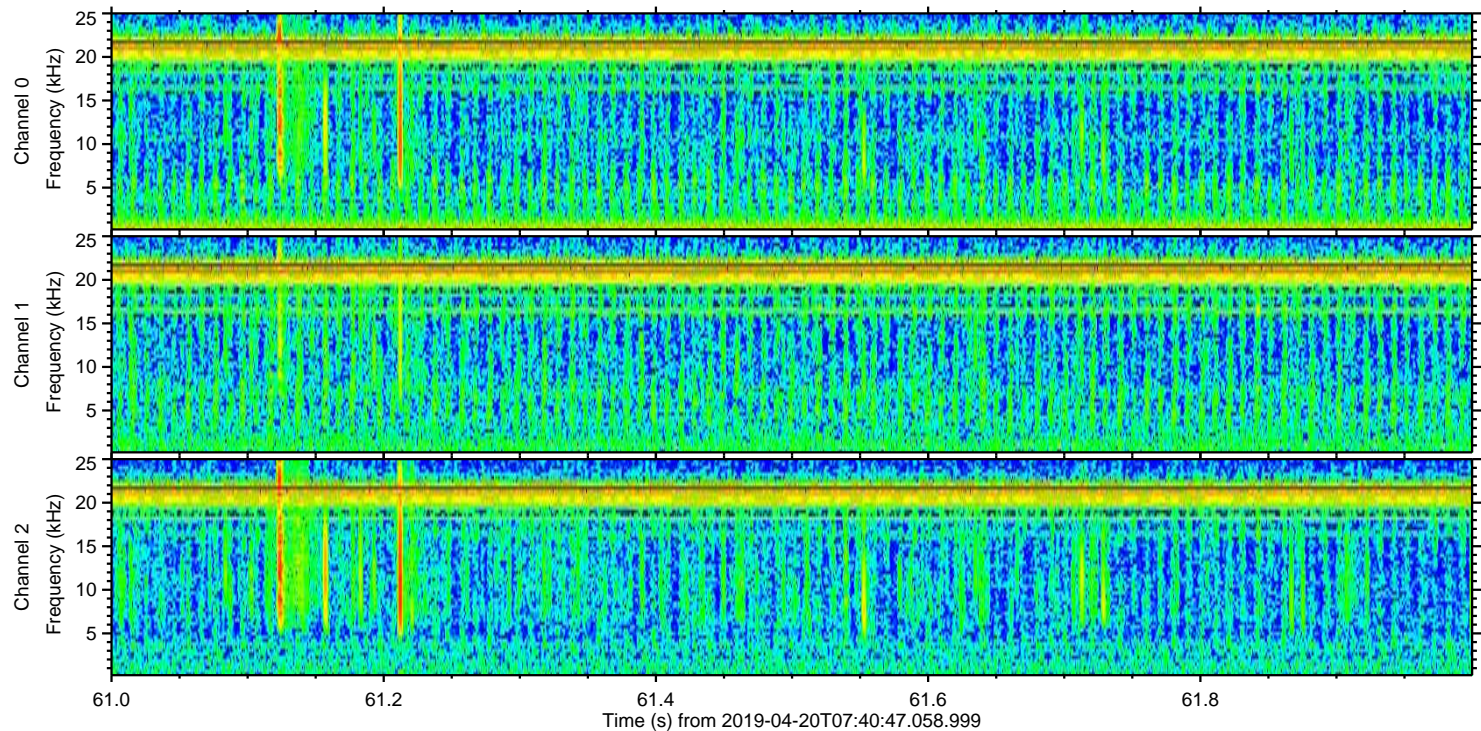
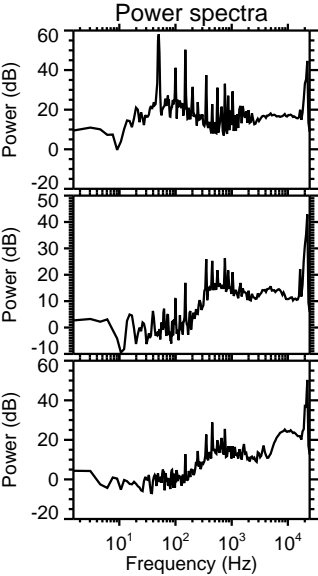
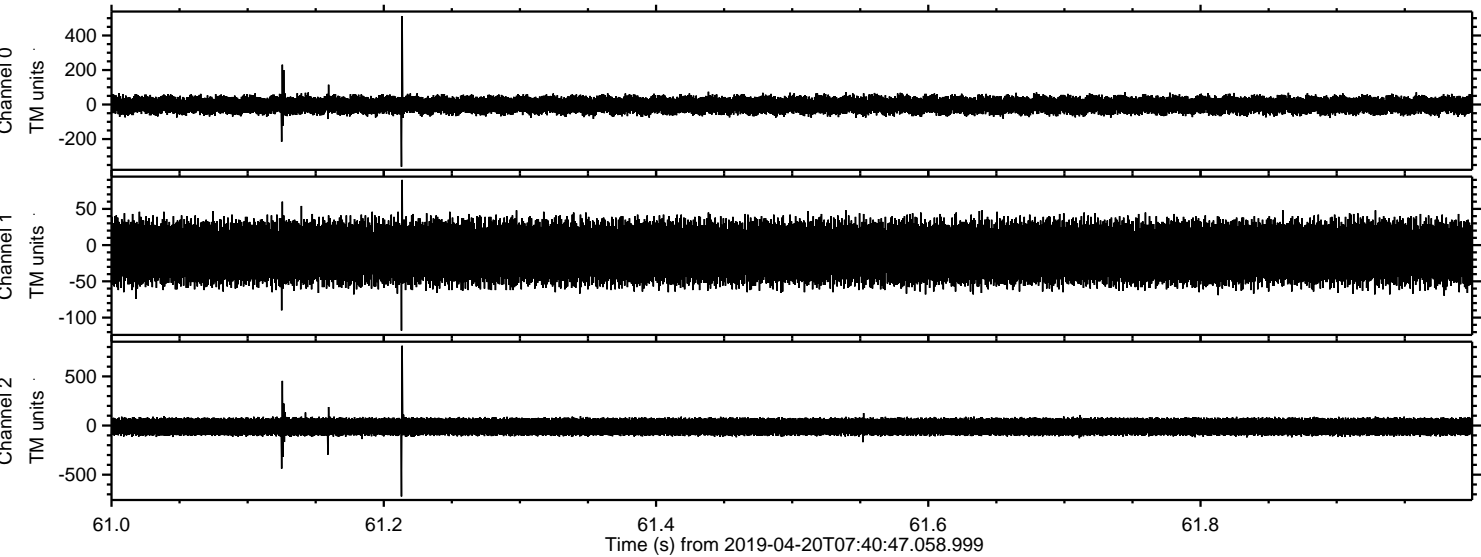
Processed Sat Apr 20 09:48:06 2019 by ELM ver.2012-10-06 from 001\_\_elm20190420\_074046\_\_dat00.bin



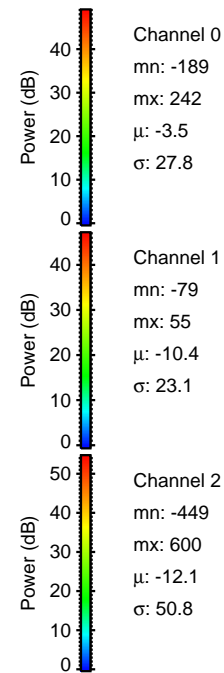
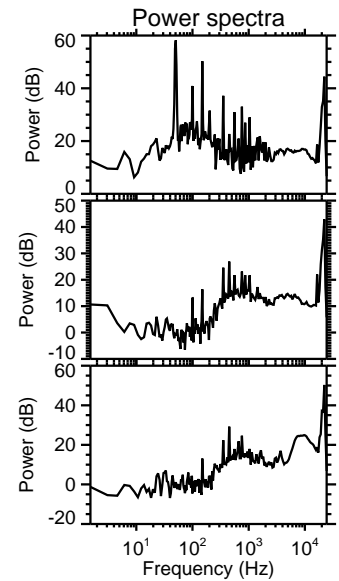
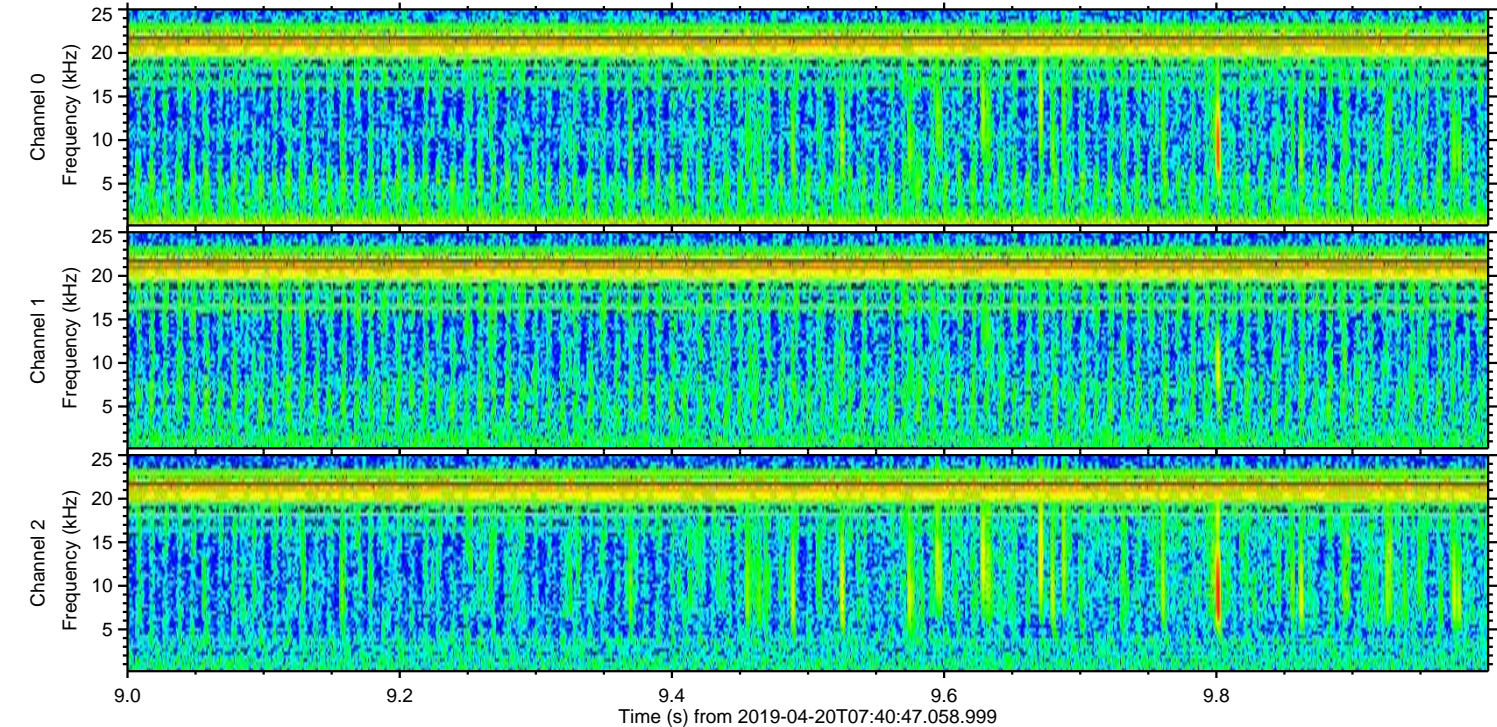
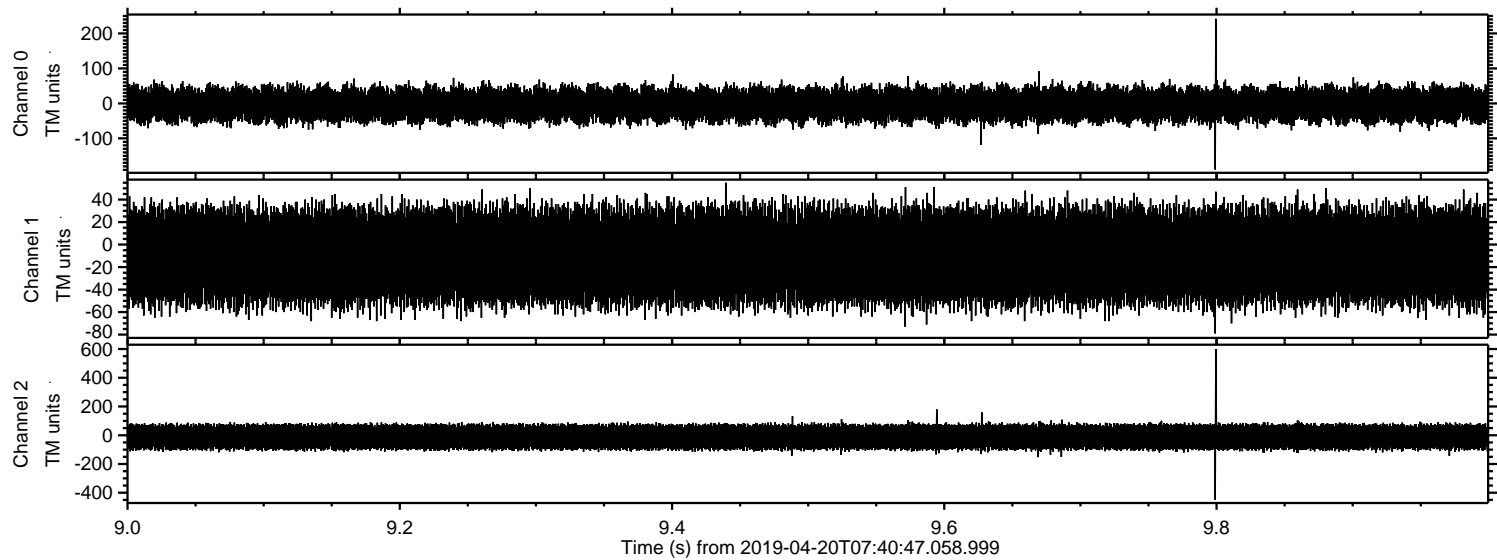
Processed Sat Apr 20 09:48:07 2019 by ELM ver.2012-10-06 from 001\_\_elm20190420\_074046\_\_dat00.bin



Processed Sat Apr 20 09:48:08 2019 by ELM ver.2012-10-06 from 001\_\_elm20190420\_074046\_\_dat00.bin

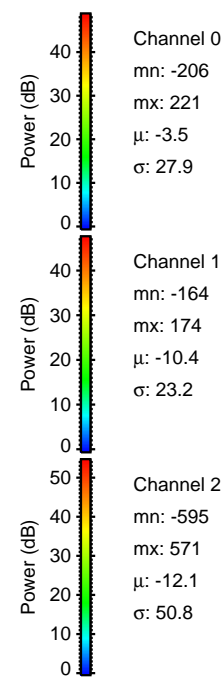
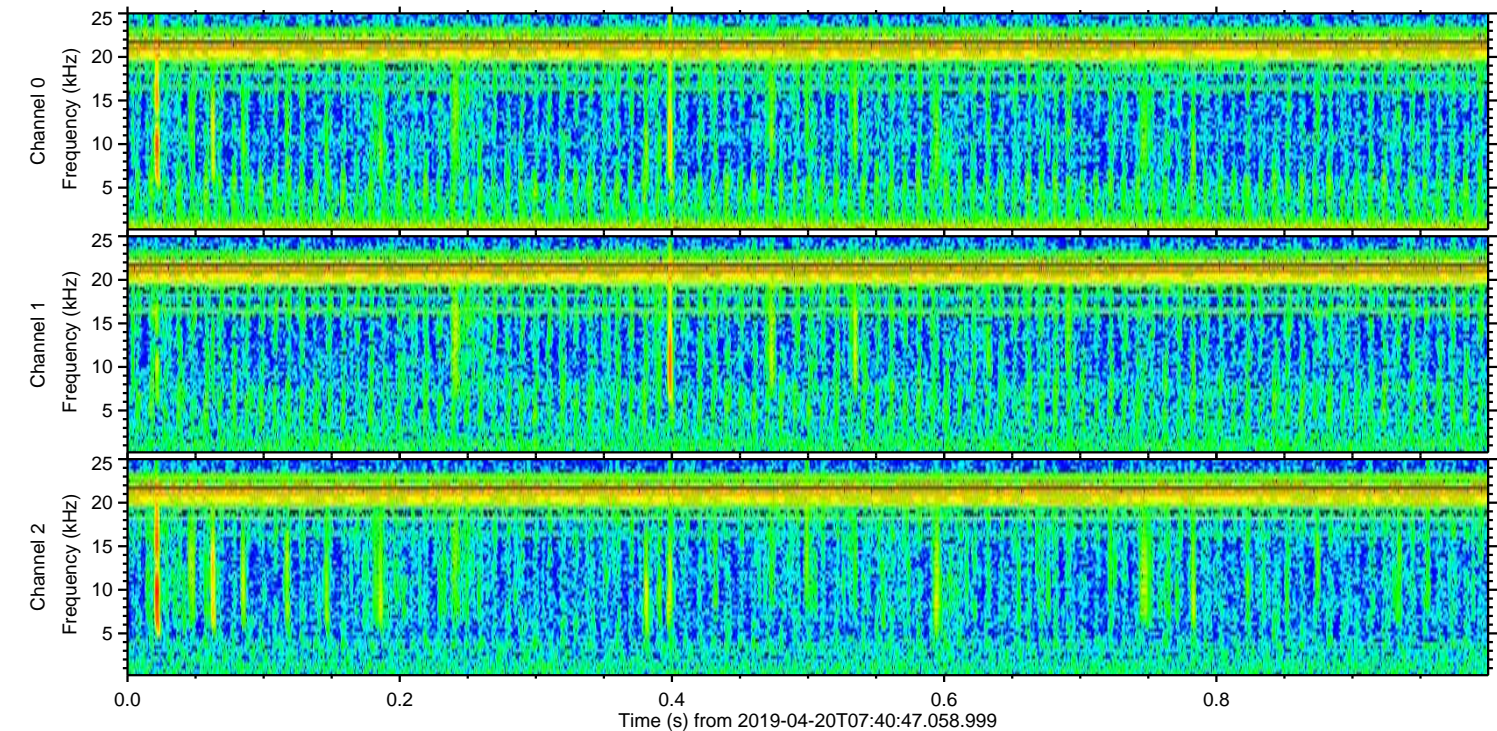
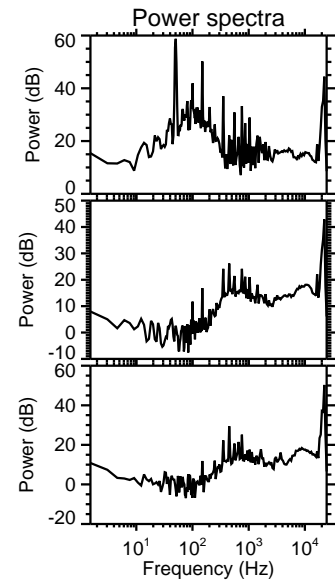
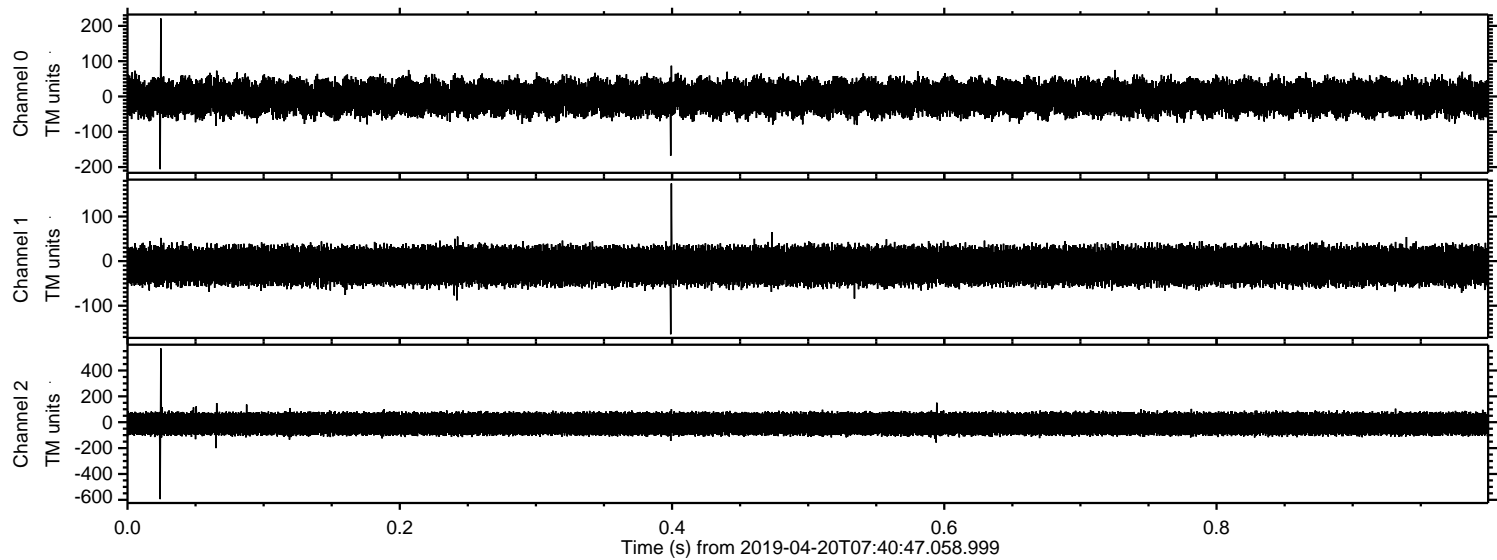


Processed Sat Apr 20 09:48:08 2019 by ELM ver.2012-10-06 from 001\_\_elm20190420\_074046\_\_dat00.bin

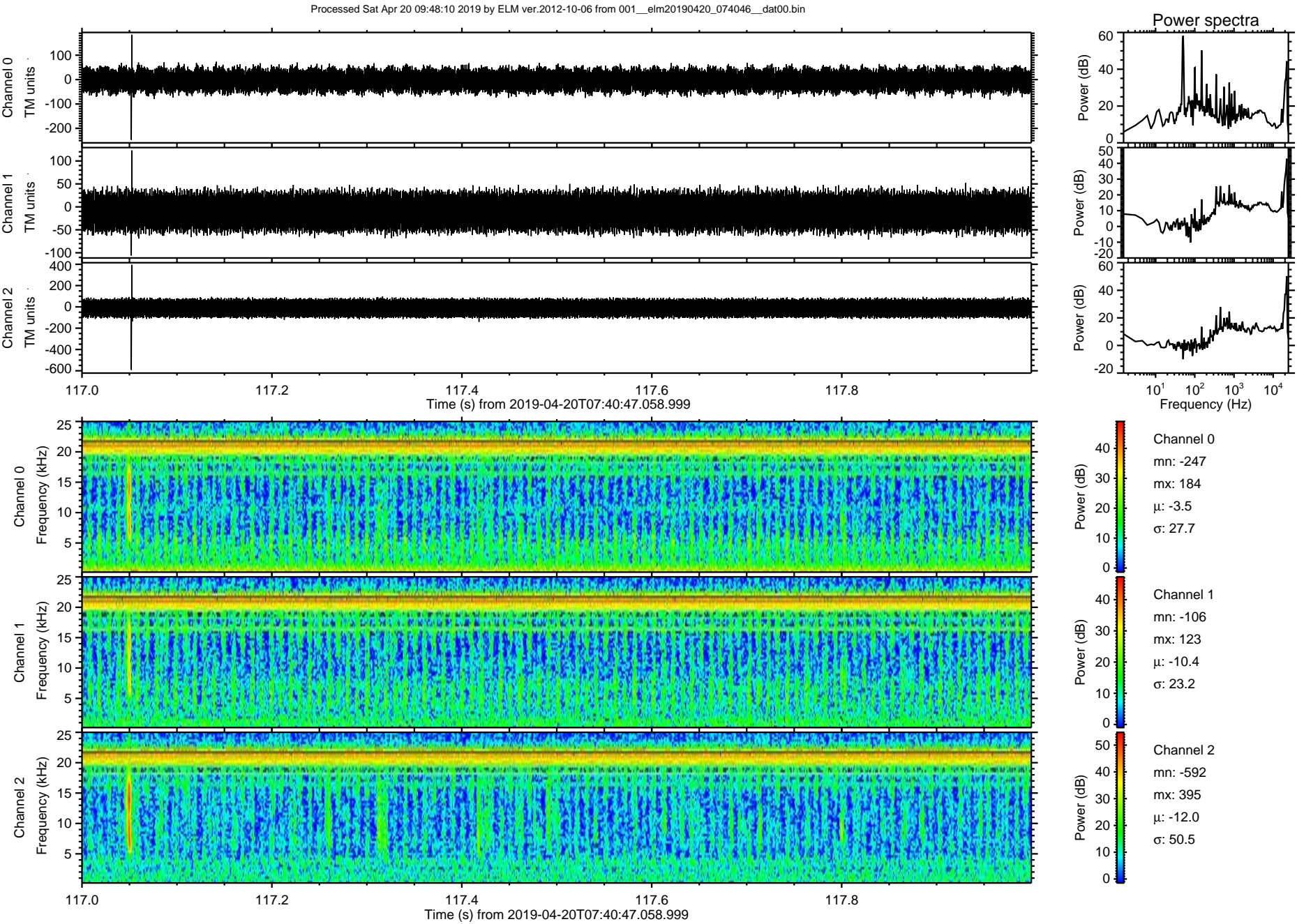


ELMAVAN 3D WAVEFORMS (Measured data sampled at 50 kHz) 51000 packets of 144 samples from 2019-04-20T07:40:47.058.999. Part 1/147

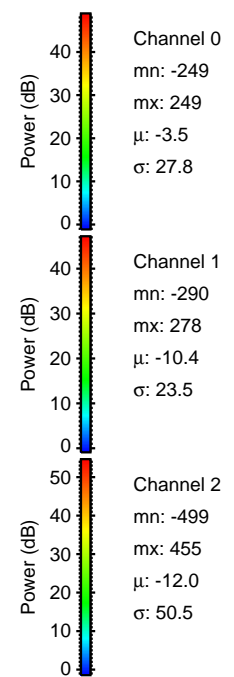
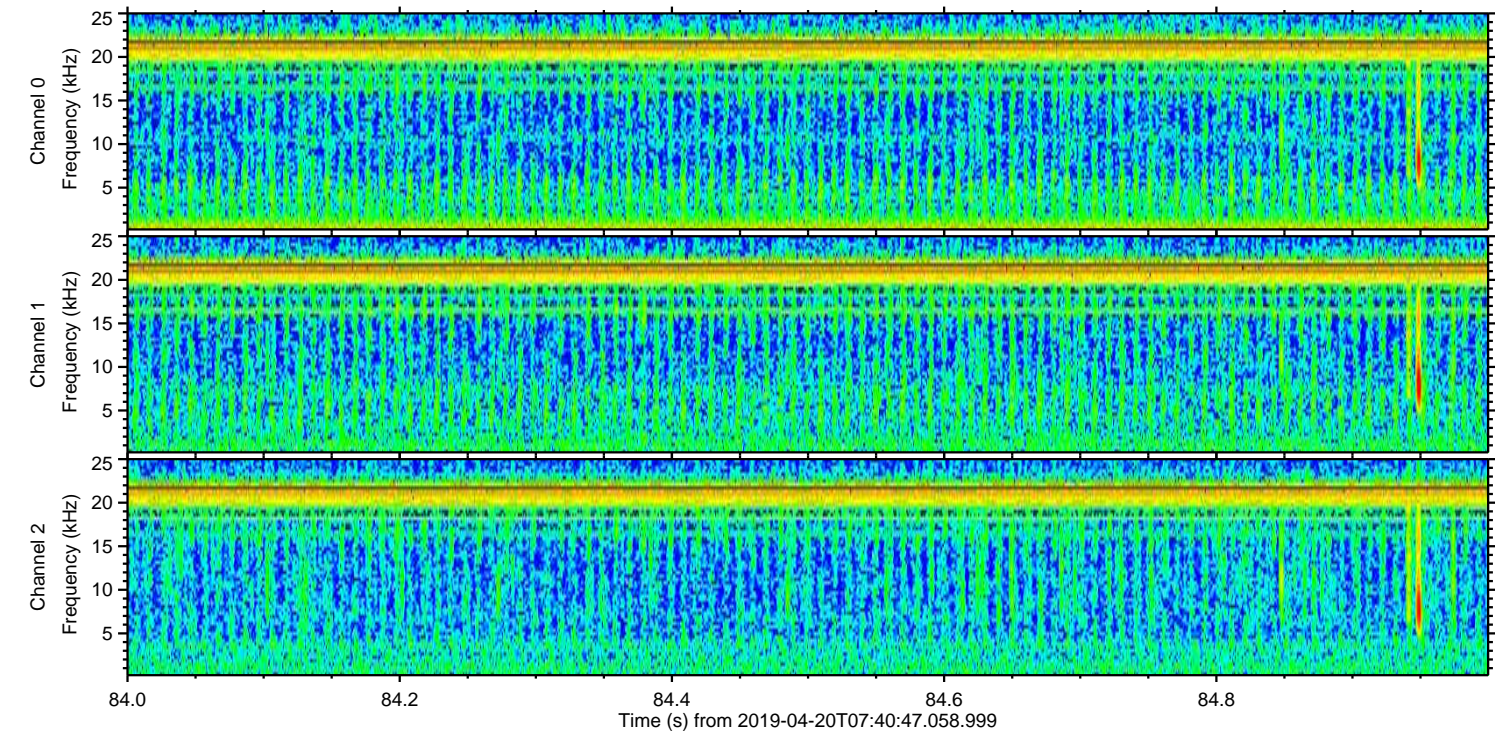
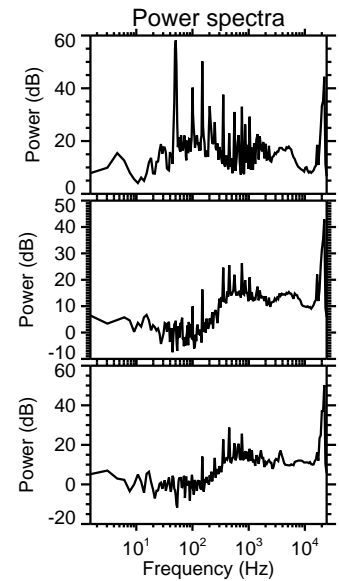
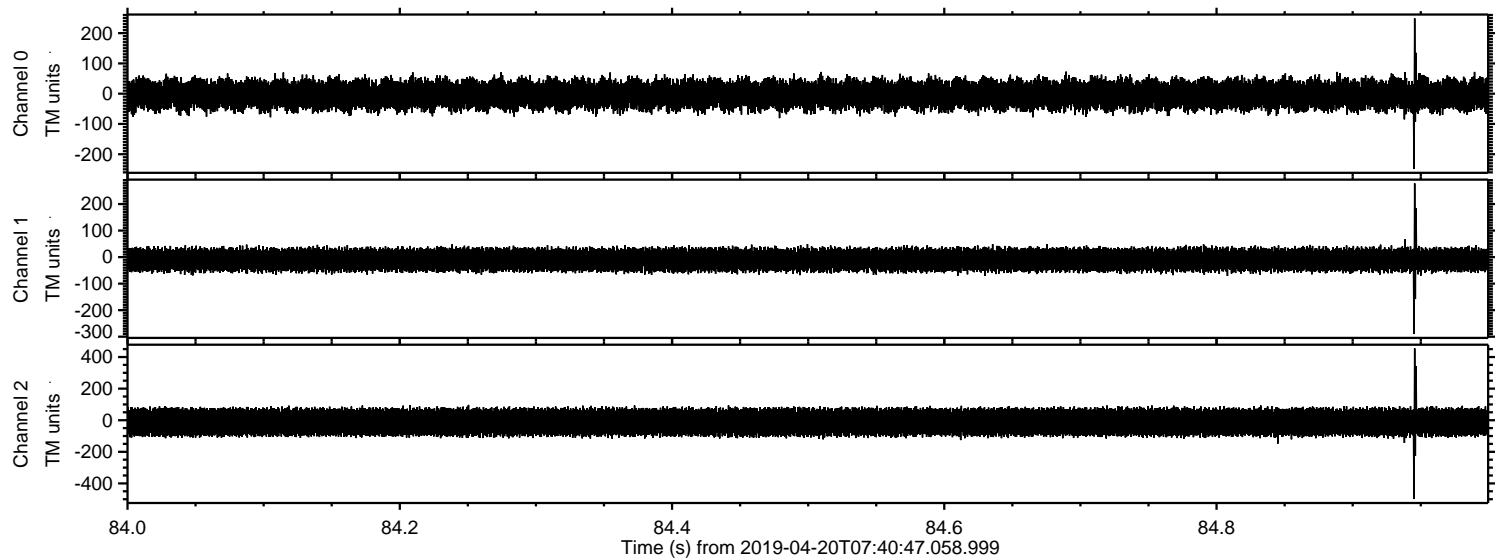
Processed Sat Apr 20 09:48:09 2019 by ELM ver.2012-10-06 from 001\_\_elm20190420\_074046\_\_dat00.bin

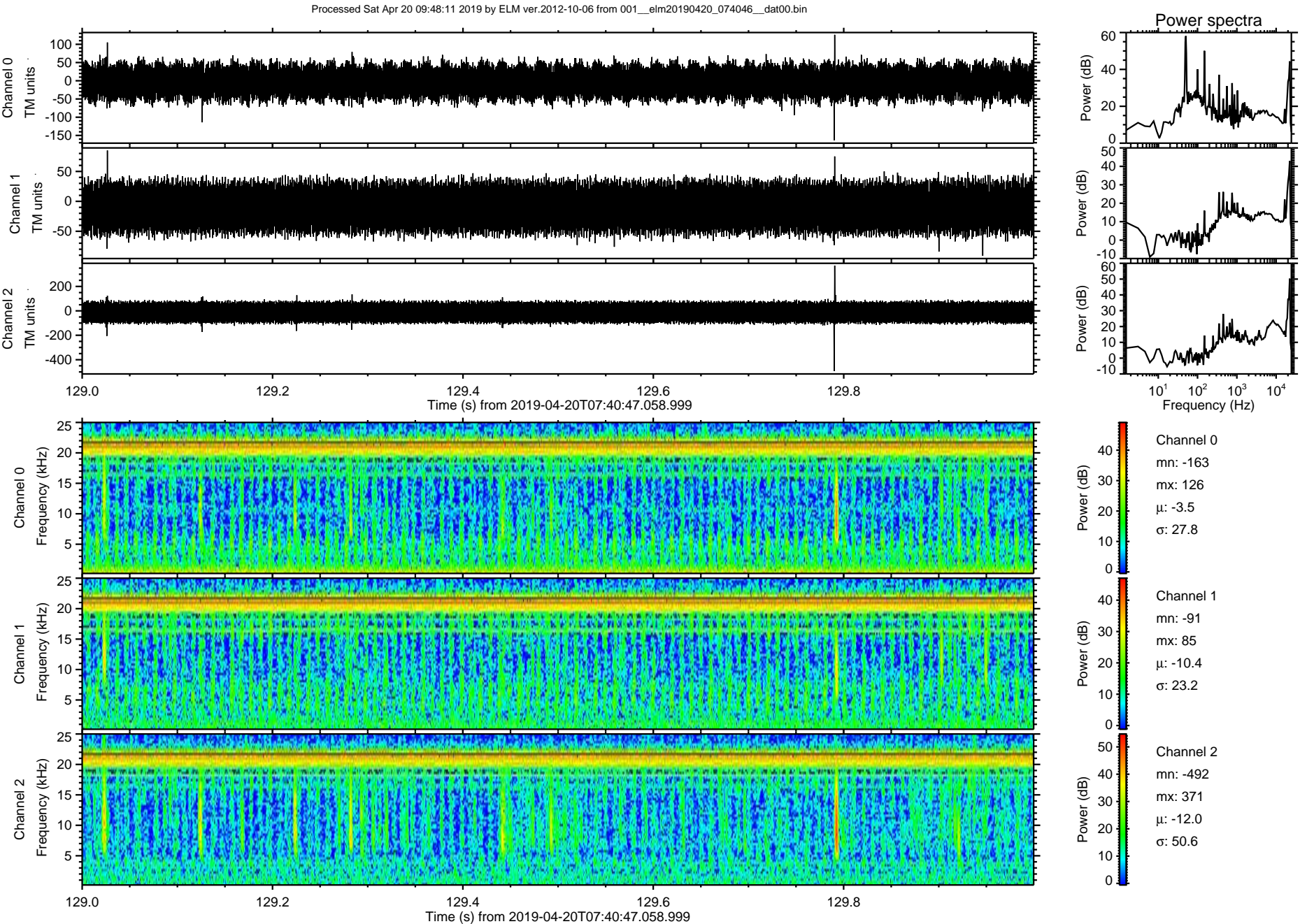


ELMAVAN 3D WAVEFORMS (Measured data sampled at 50 kHz) 51000 packets of 144 samples from 2019-04-20T07:40:47.058.999. Part 118/147



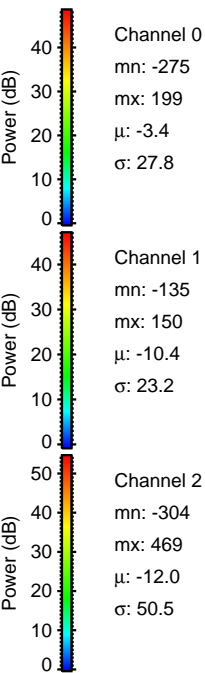
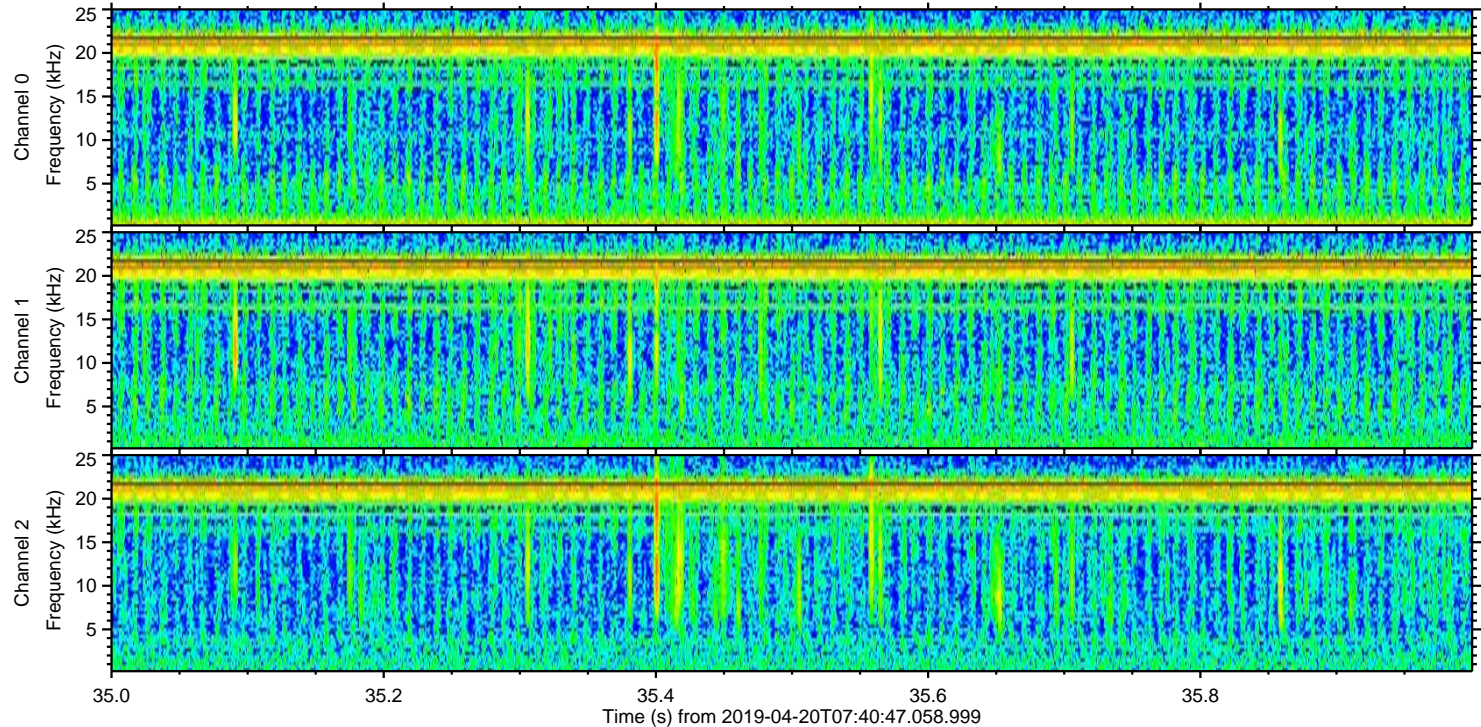
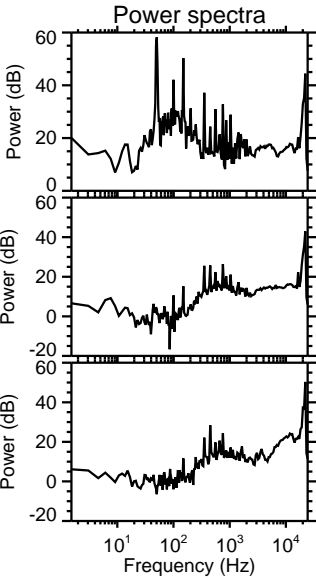
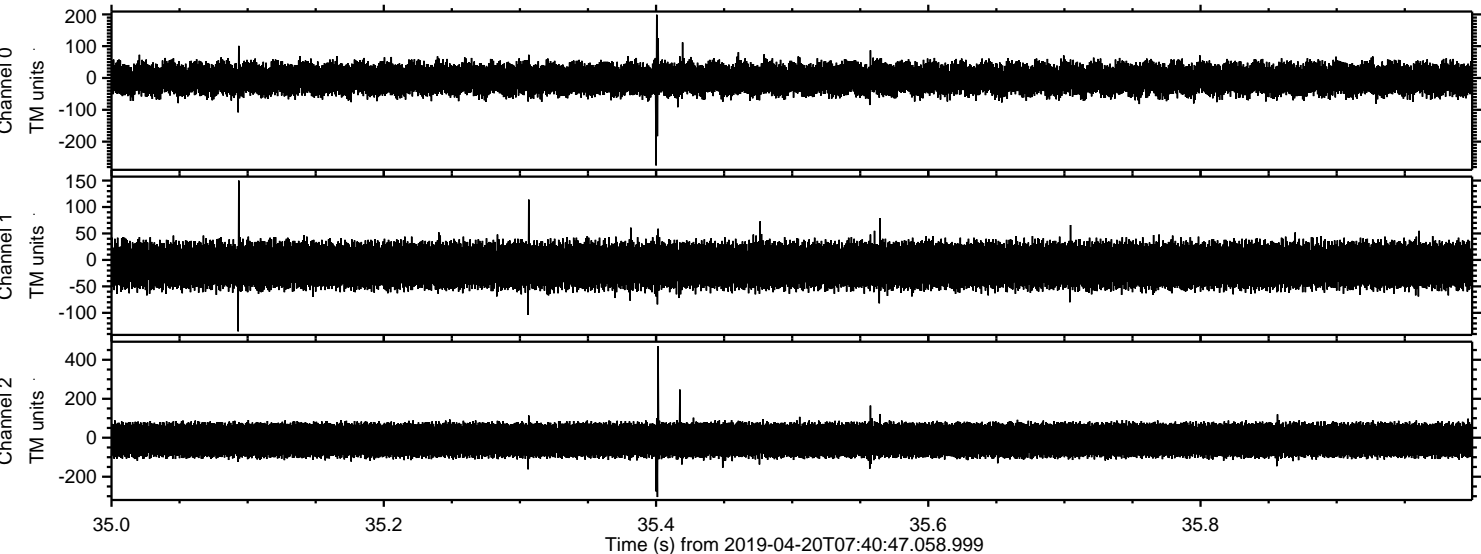
Processed Sat Apr 20 09:48:10 2019 by ELM ver.2012-10-06 from 001\_\_elm20190420\_074046\_\_dat00.bin





ELMAVAN 3D WAVEFORMS (Measured data sampled at 50 kHz) 51000 packets of 144 samples from 2019-04-20T07:40:47.058.999. Part 36/147

Processed Sat Apr 20 09:48:12 2019 by ELM ver.2012-10-06 from 001\_\_elm20190420\_074046\_\_dat00.bin



Processed Sat Apr 20 09:48:12 2019 by ELM ver.2012-10-06 from 001\_\_elm20190420\_074046\_\_dat00.bin

