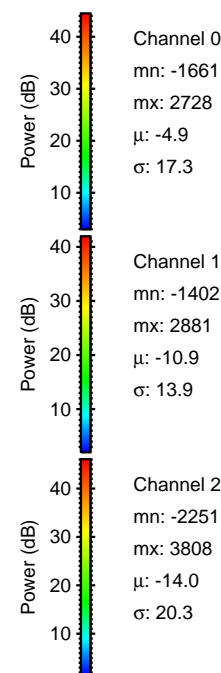
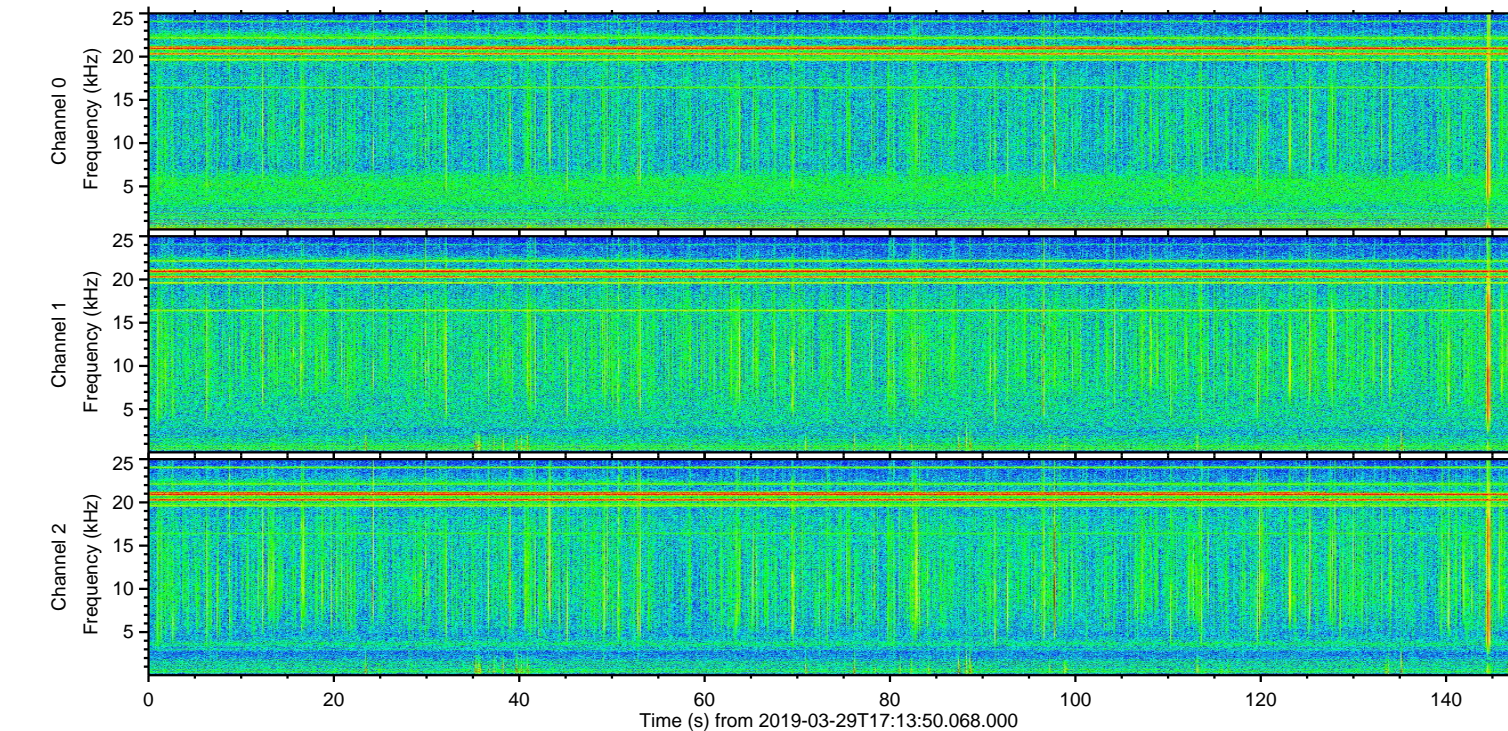
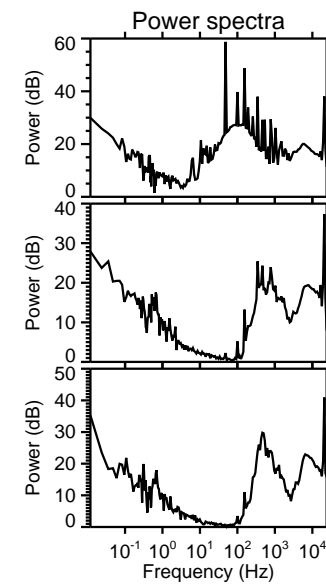
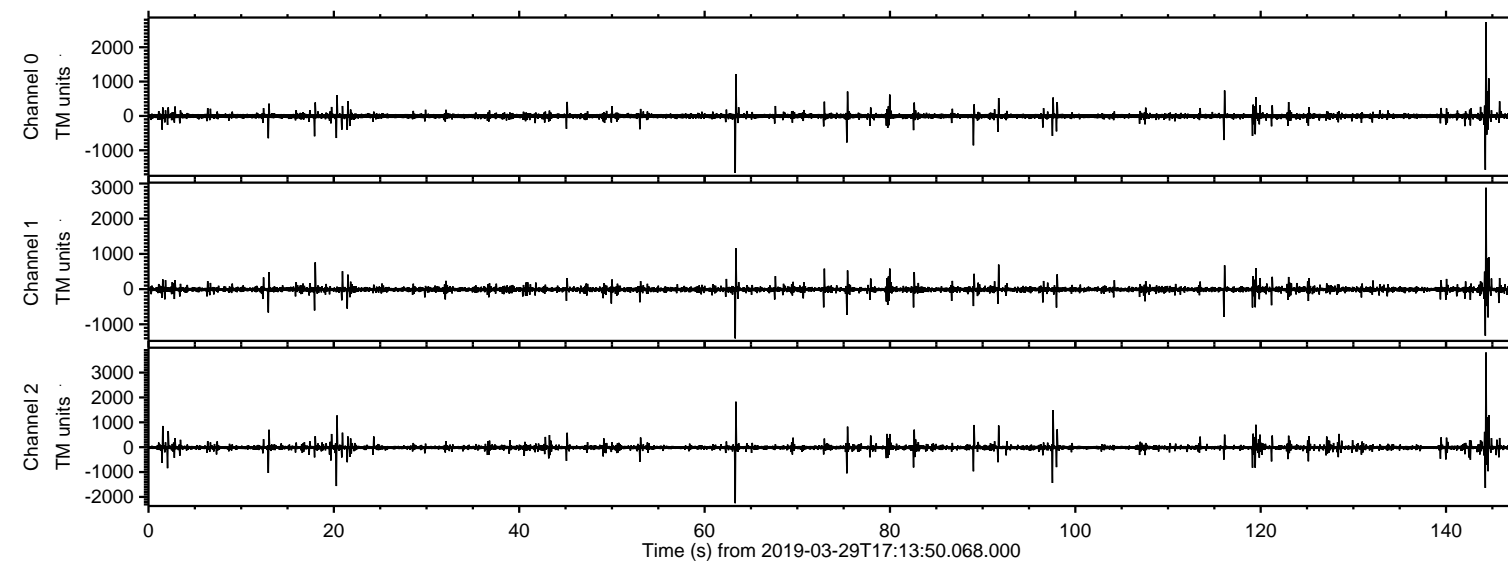


# ELMAVAN 3D WAVEFORMS (Measured data sampled at 50 kHz) 51000 packets of 144 samples from 2019-03-29T17:13:50.068.000.

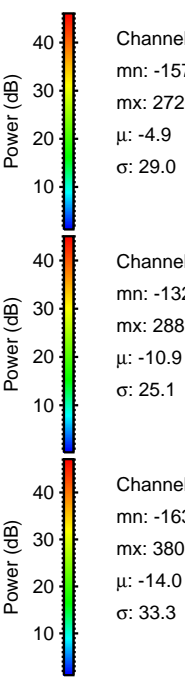
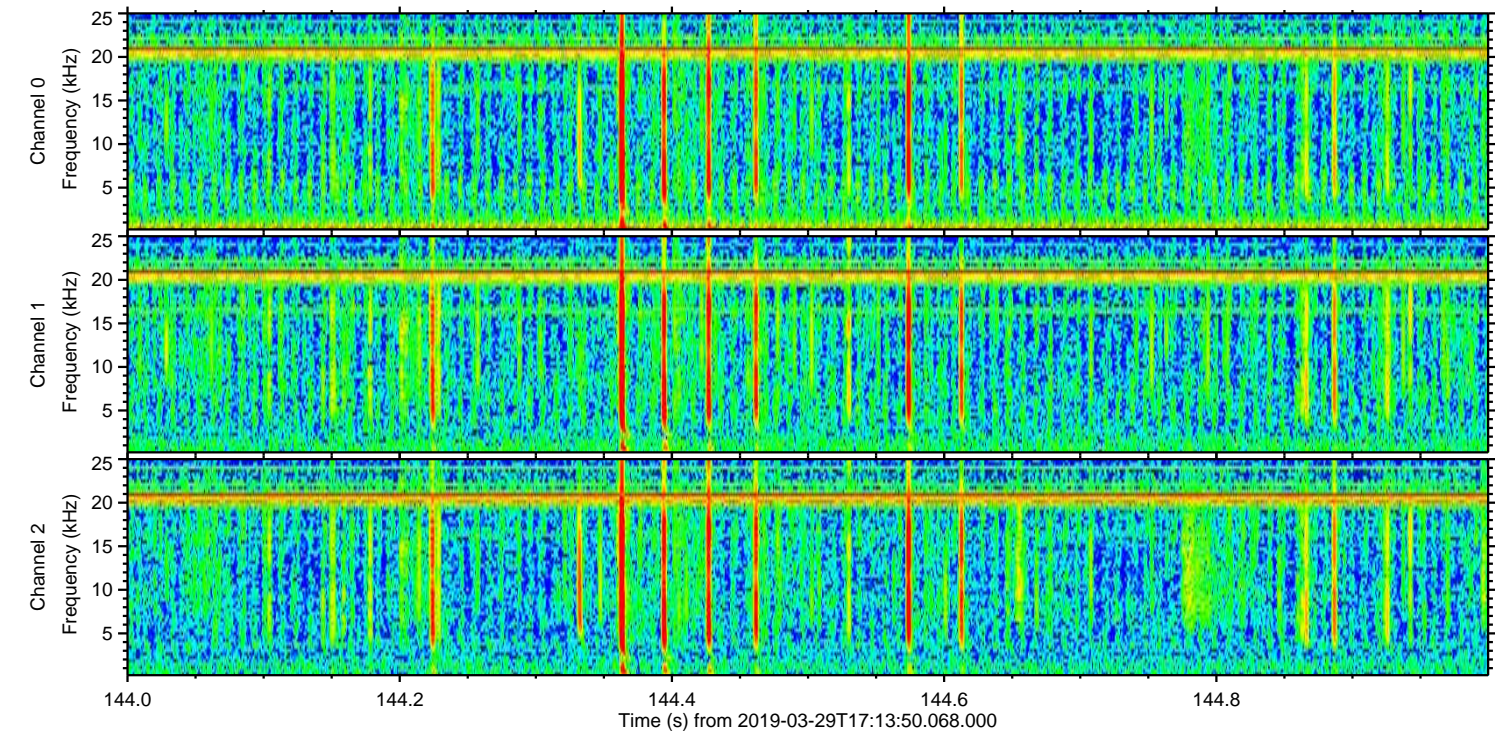
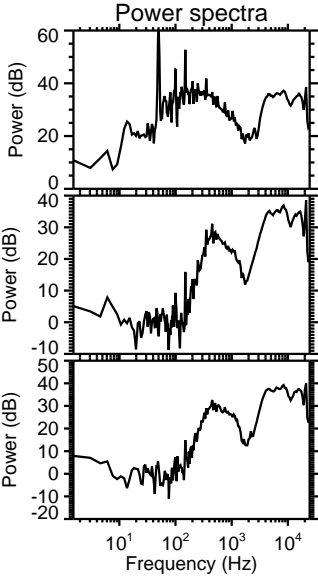
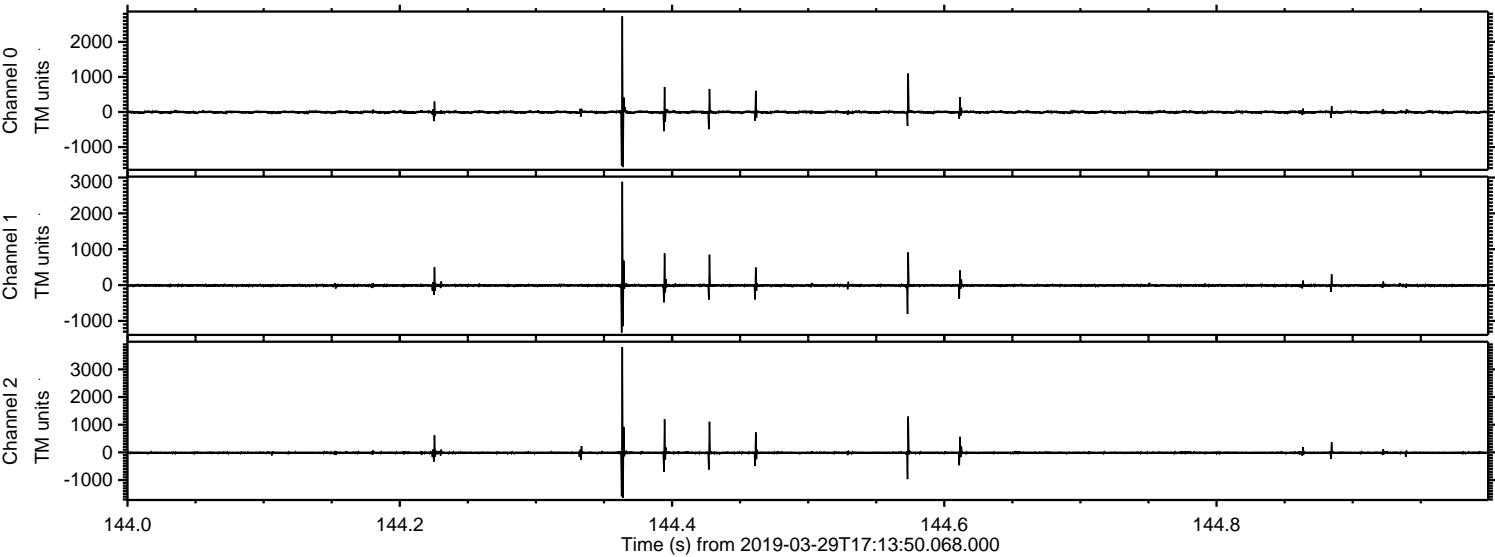
Processed Fri Mar 29 18:21:27 2019 by ELM ver.2012-10-06 from 001\_\_elm20190329\_171349\_\_dat00.bin





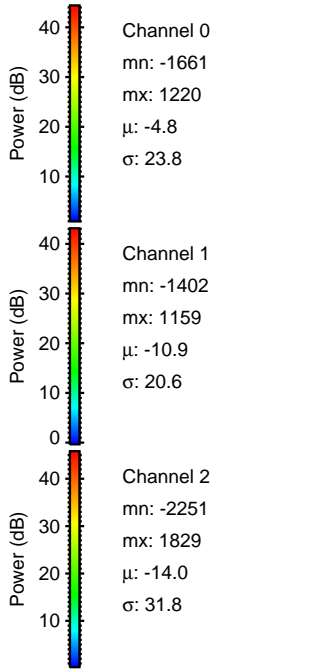
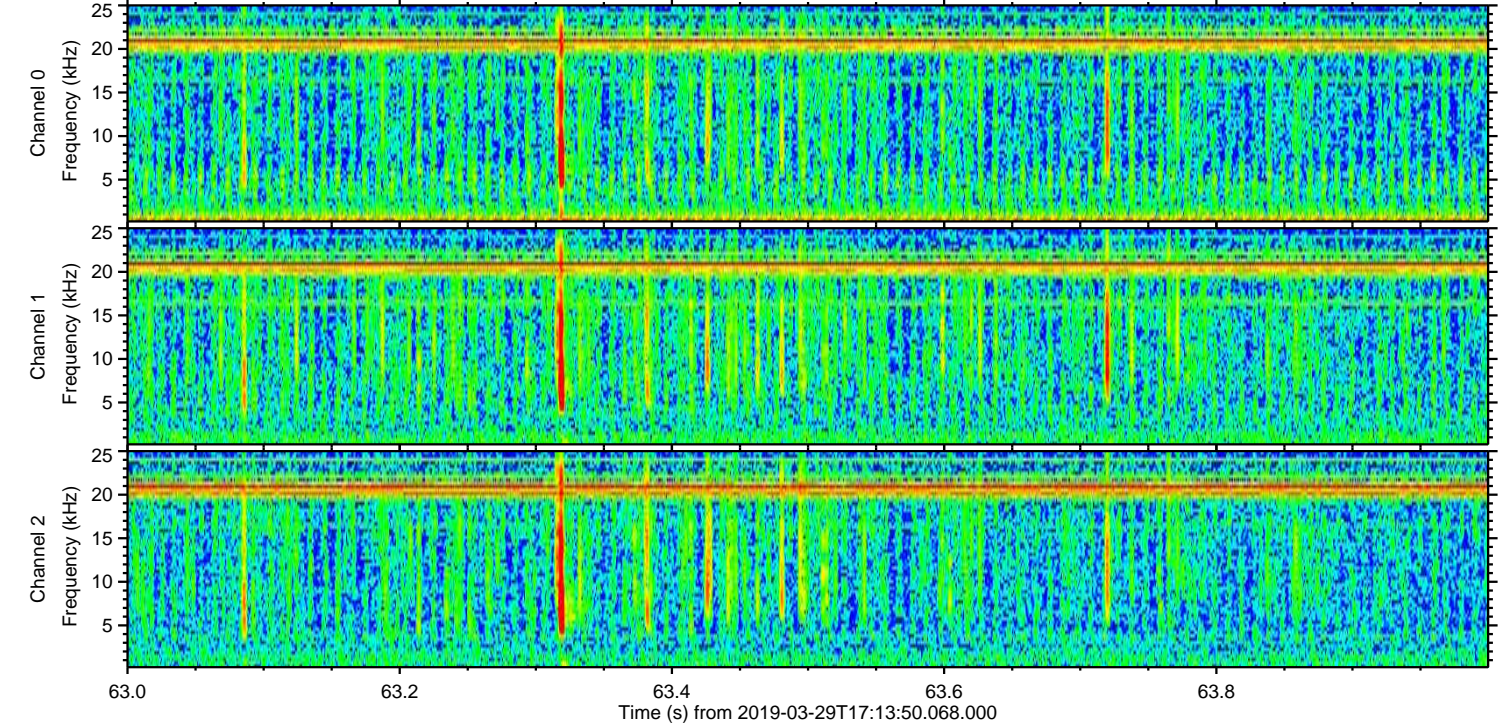
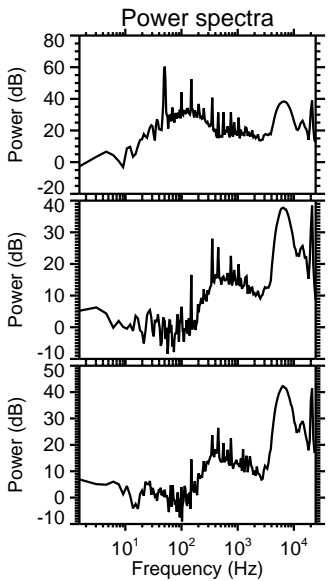
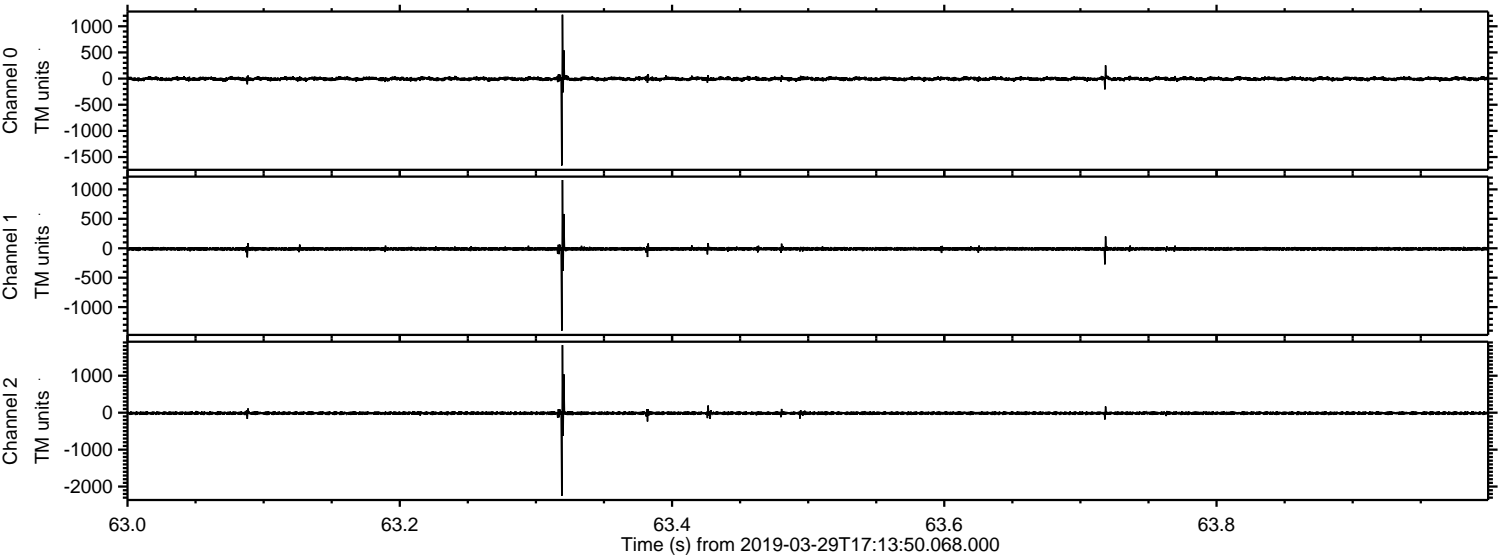
ELMAVAN 3D WAVEFORMS (Measured data sampled at 50 kHz) 51000 packets of 144 samples from 2019-03-29T17:13:50.068.000. Part 145/147

Processed Fri Mar 29 18:21:37 2019 by ELM ver.2012-10-06 from 001\_\_elm20190329\_171349\_\_dat00.bin



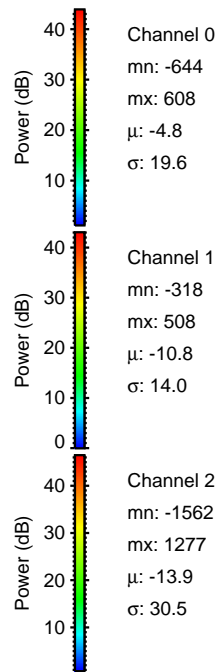
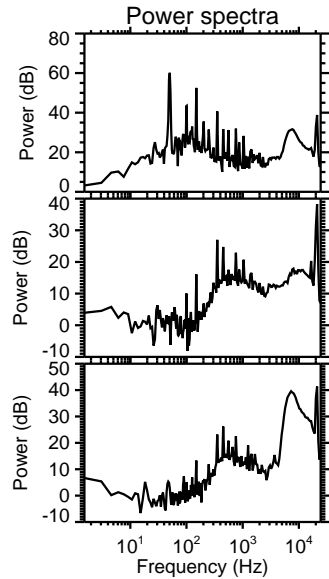
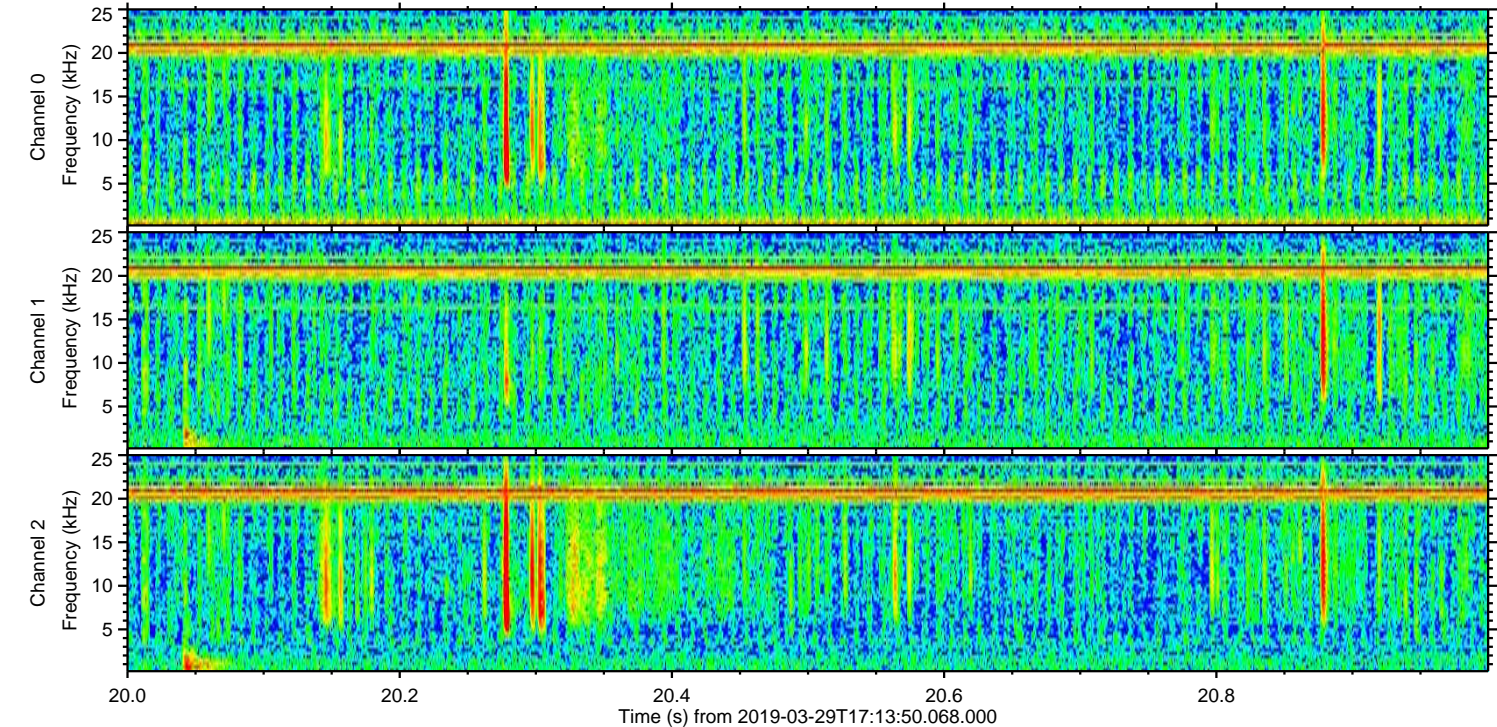
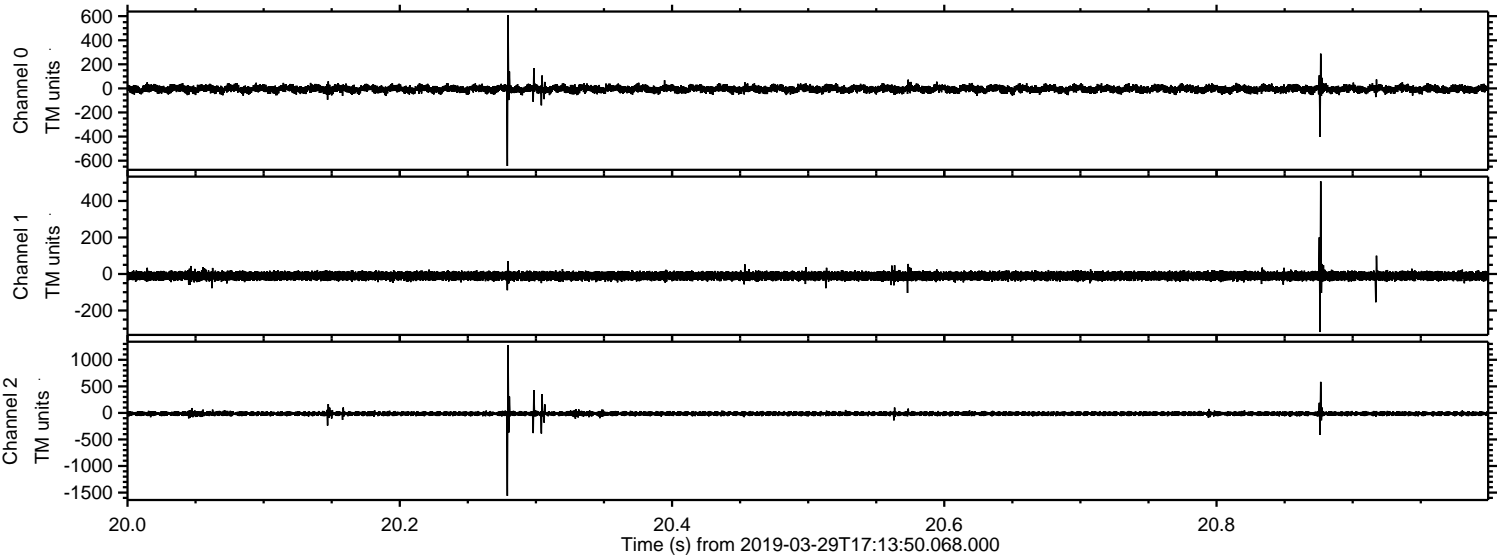


Processed Fri Mar 29 18:21:38 2019 by ELM ver.2012-10-06 from 001\_\_elm20190329\_171349\_\_dat00.bin



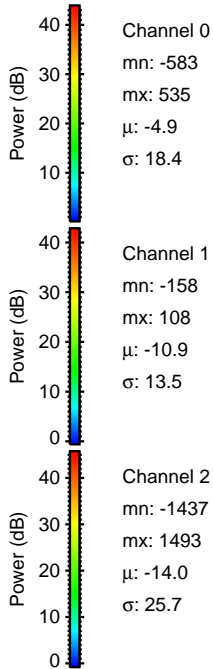
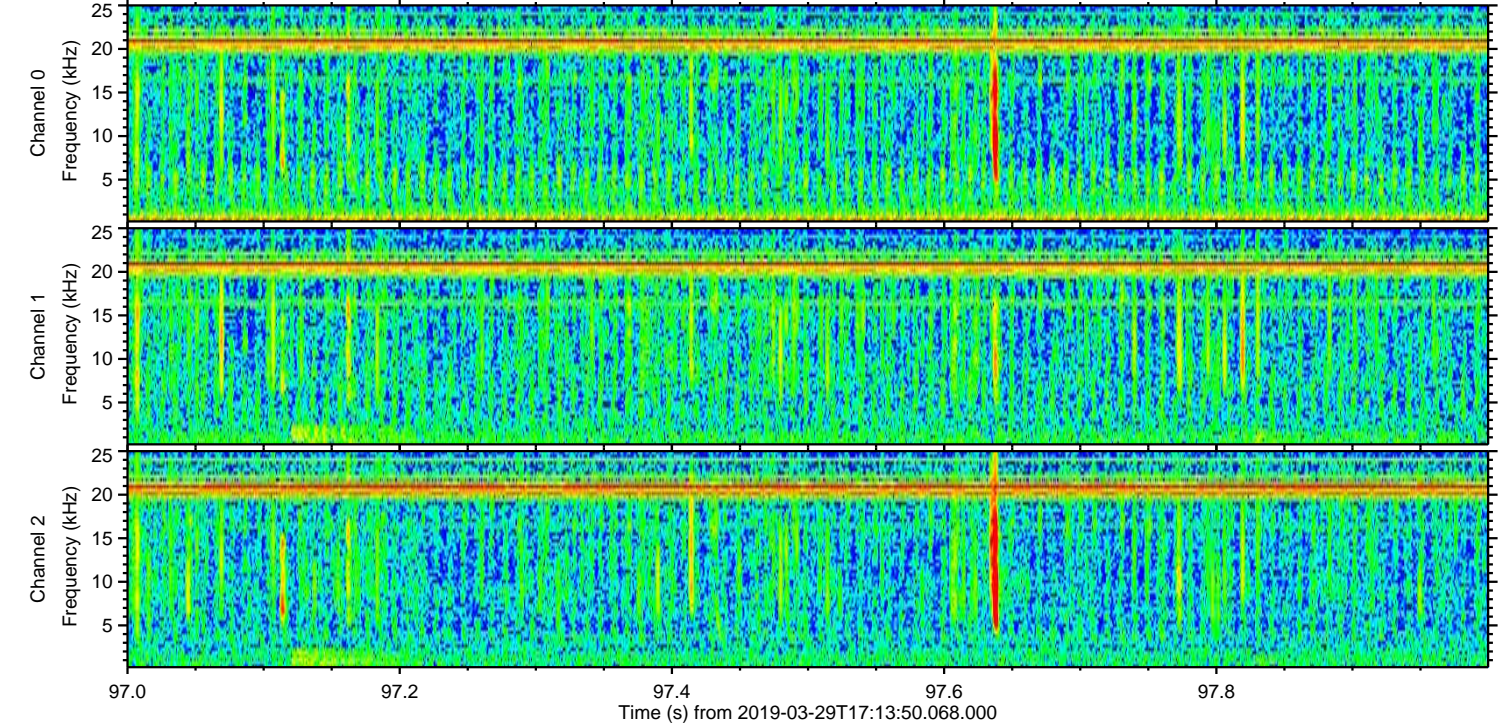
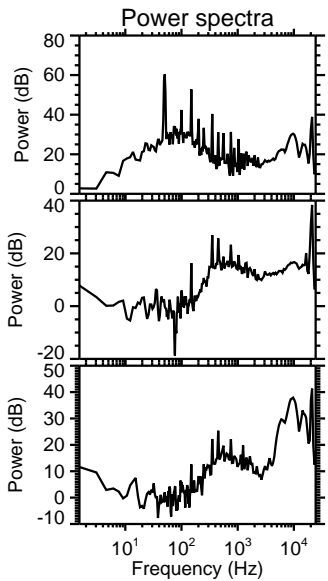
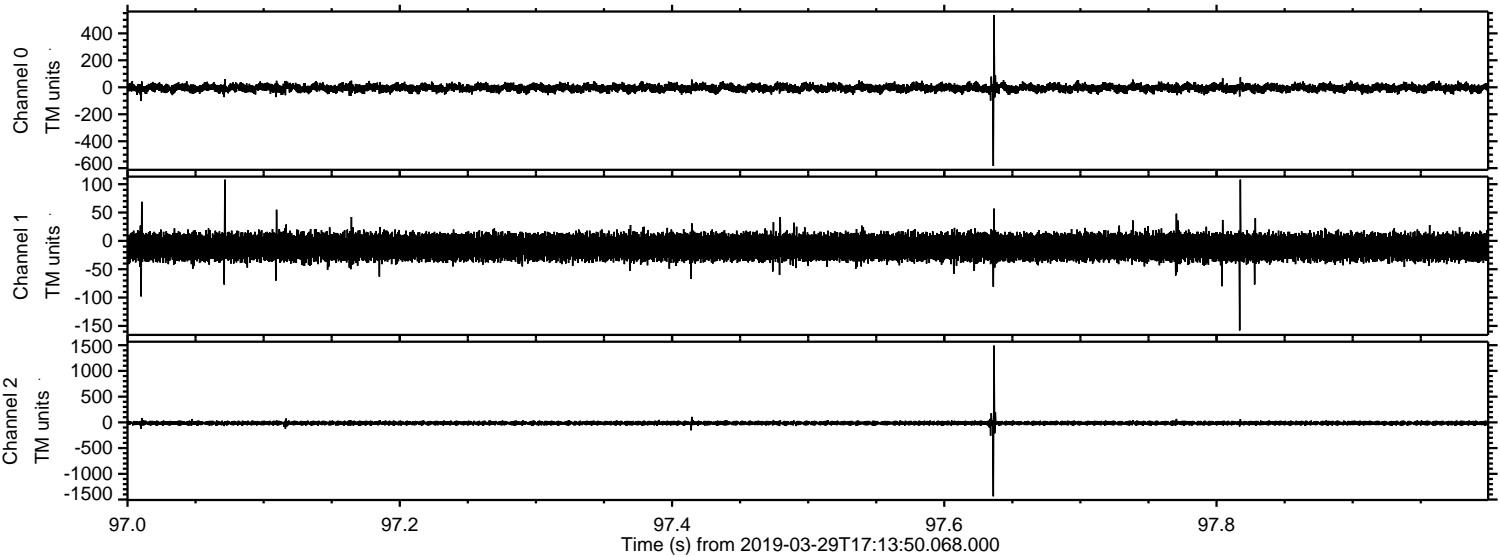


Processed Fri Mar 29 18:21:39 2019 by ELM ver.2012-10-06 from 001\_\_elm20190329\_171349\_\_dat00.bin



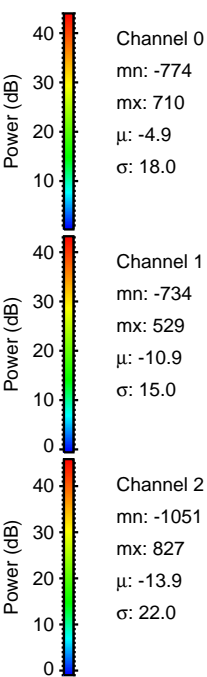
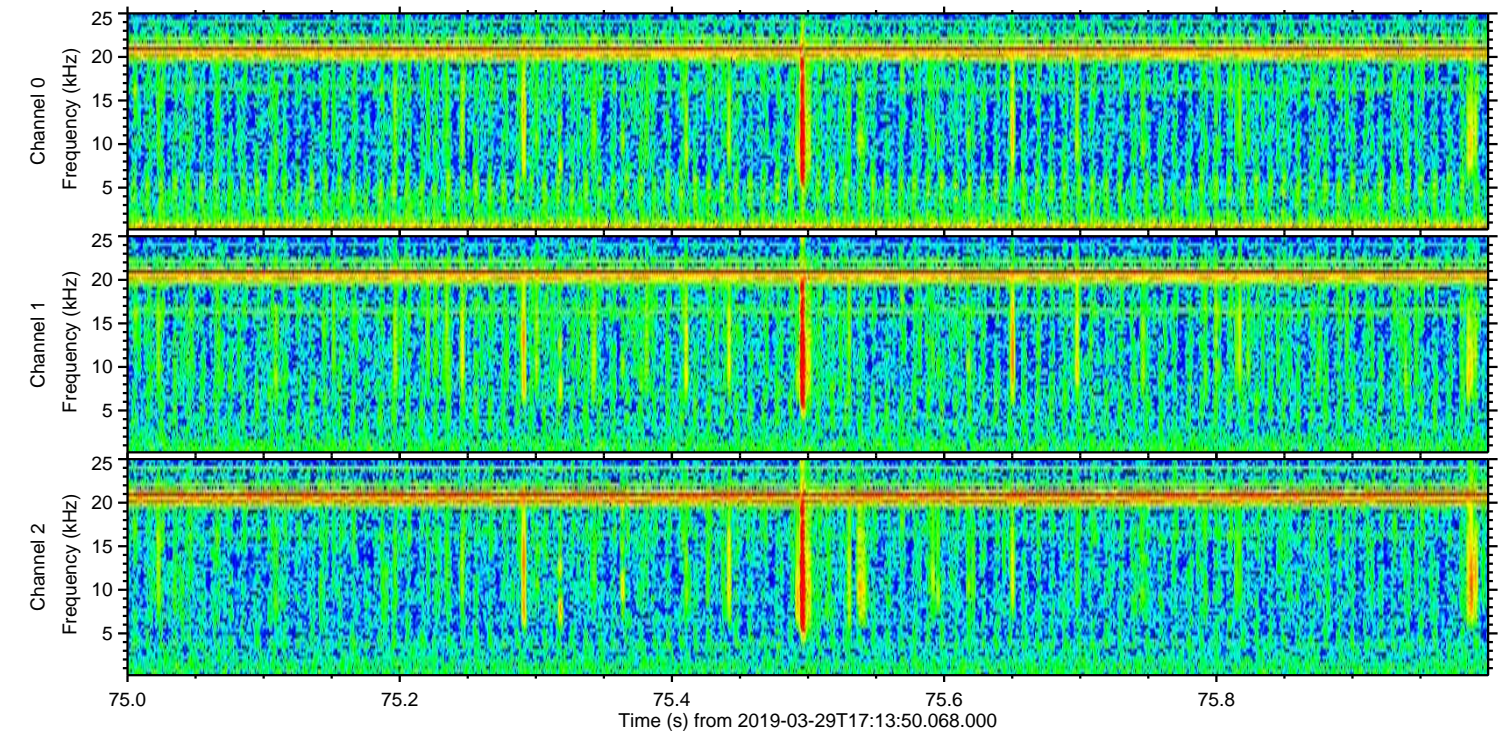
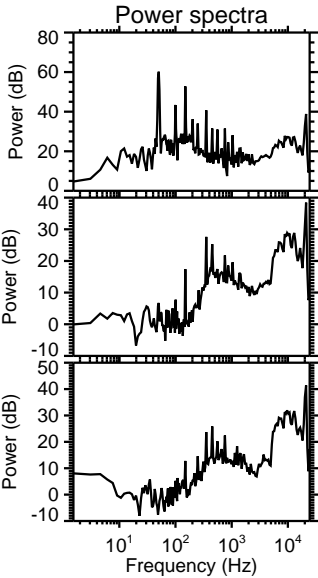
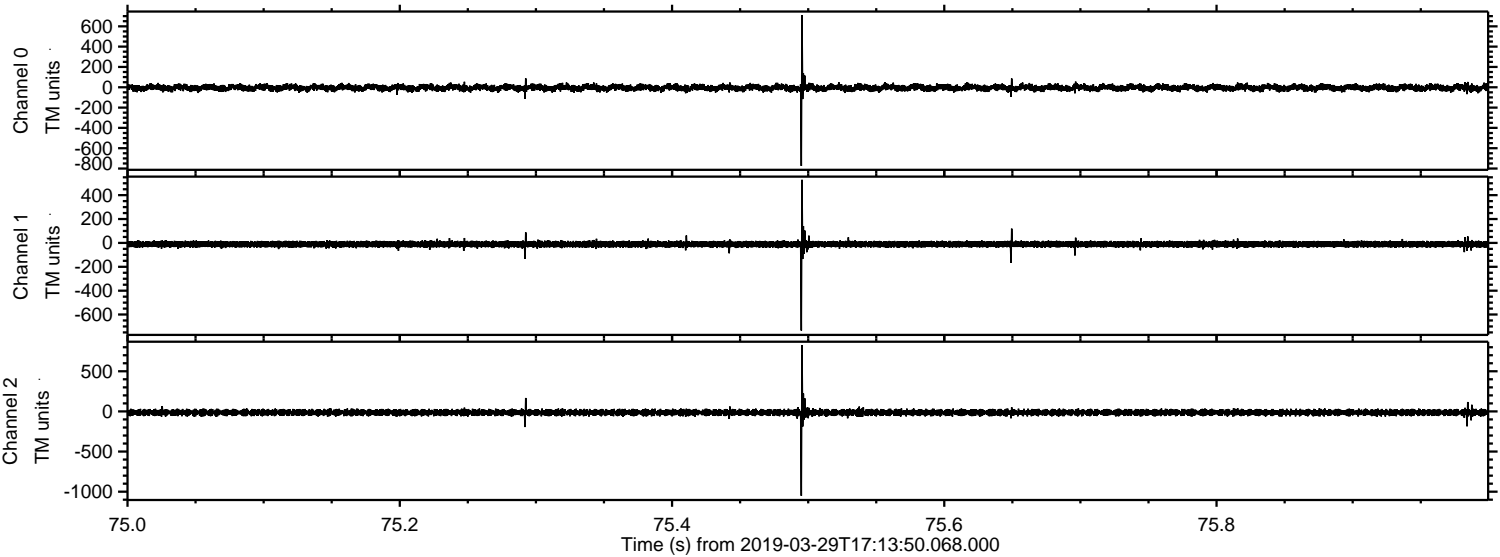


Processed Fri Mar 29 18:21:40 2019 by ELM ver.2012-10-06 from 001\_\_elm20190329\_171349\_\_dat00.bin



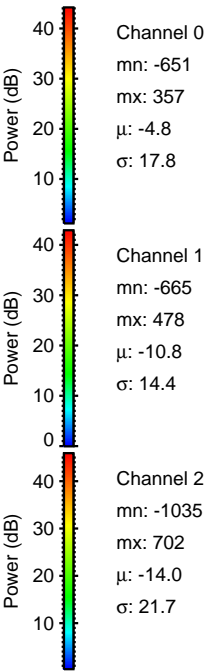
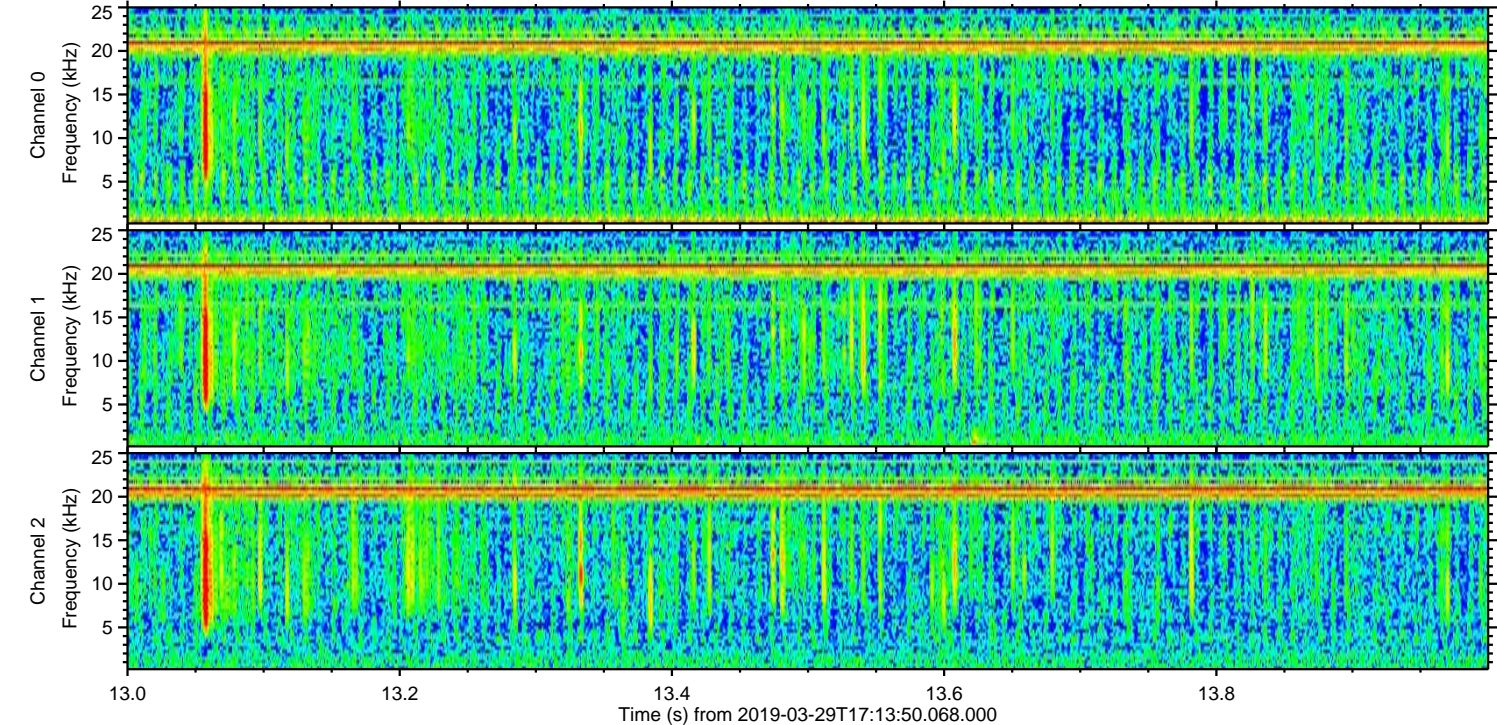
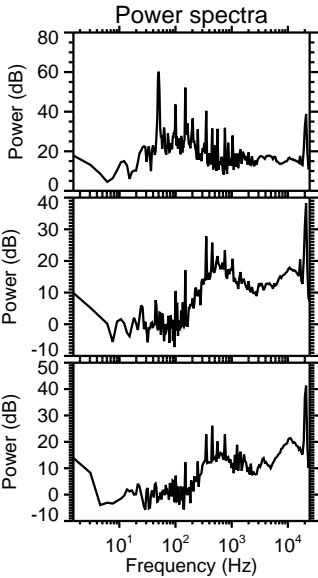
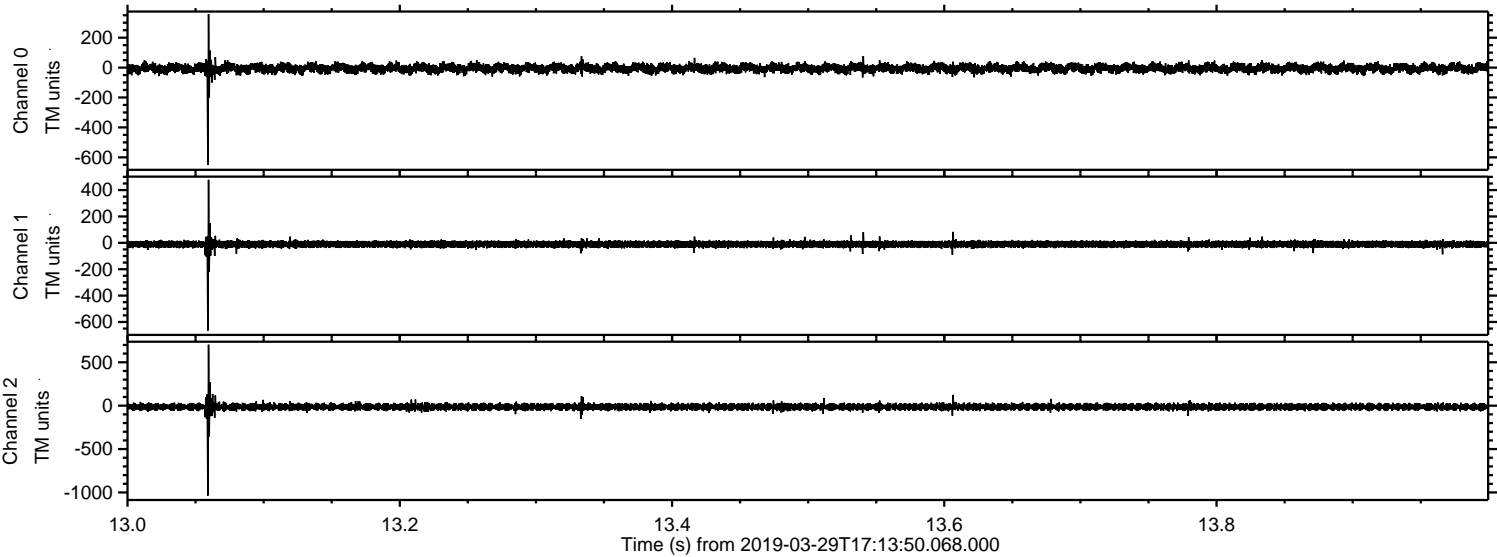


Processed Fri Mar 29 18:21:40 2019 by ELM ver.2012-10-06 from 001\_\_elm20190329\_171349\_\_dat00.bin



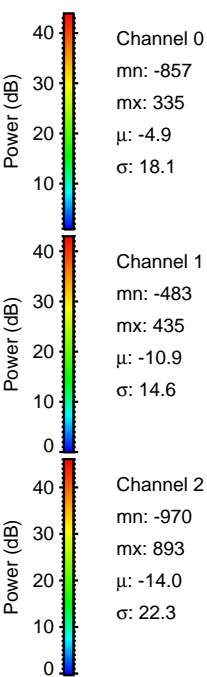
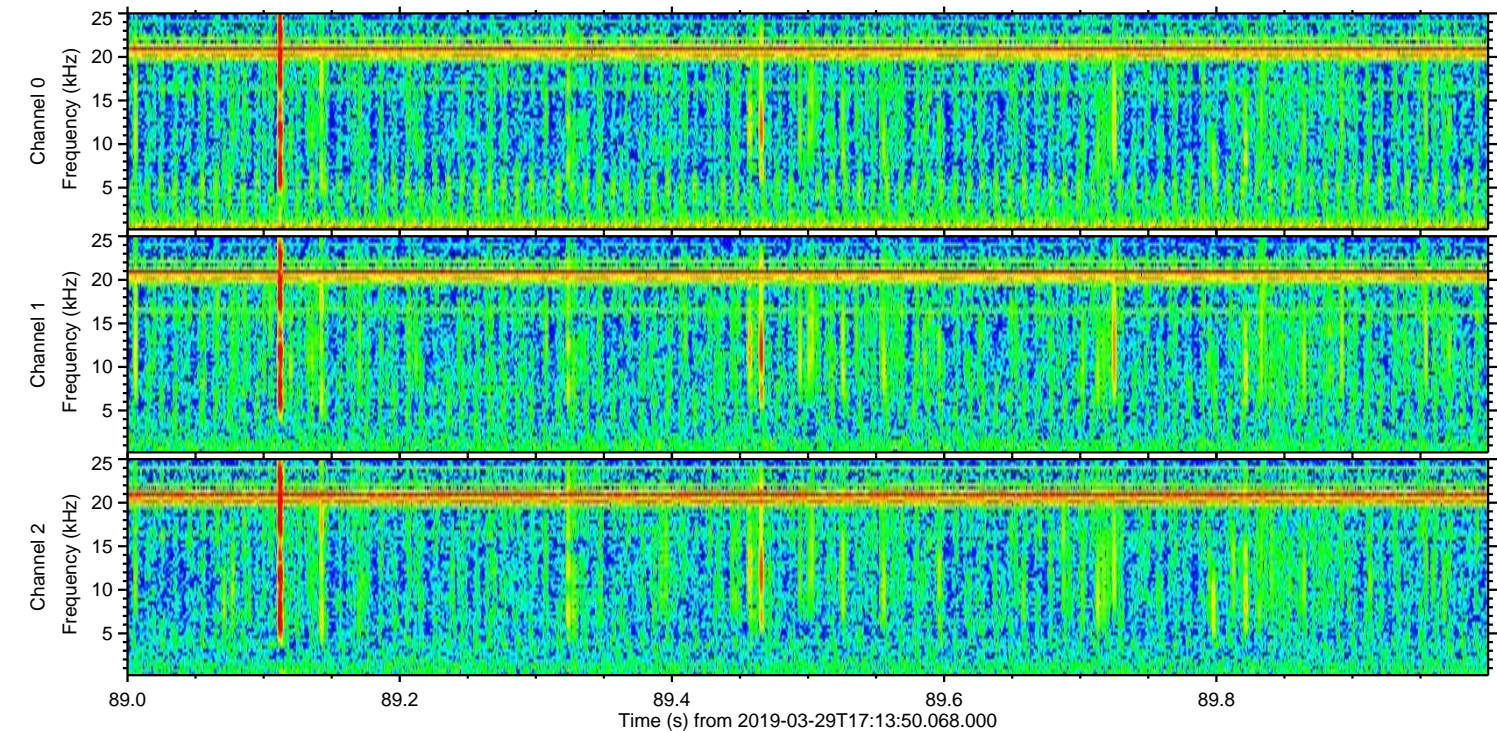
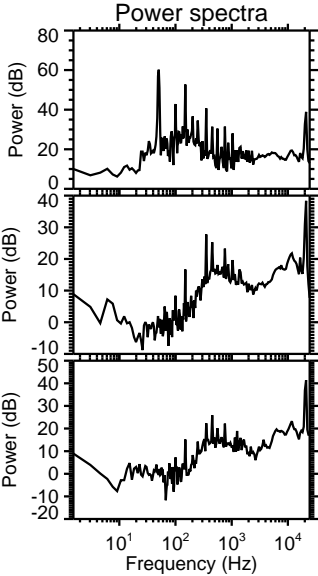
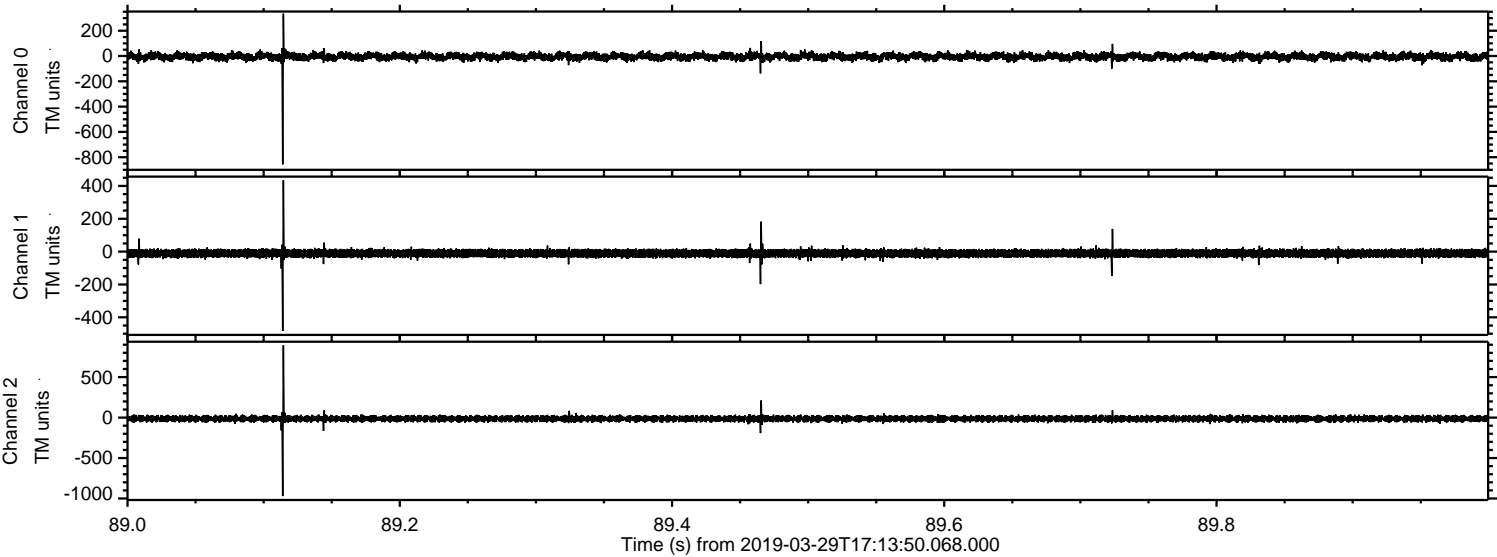


Processed Fri Mar 29 18:21:41 2019 by ELM ver.2012-10-06 from 001\_\_elm20190329\_171349\_\_dat00.bin

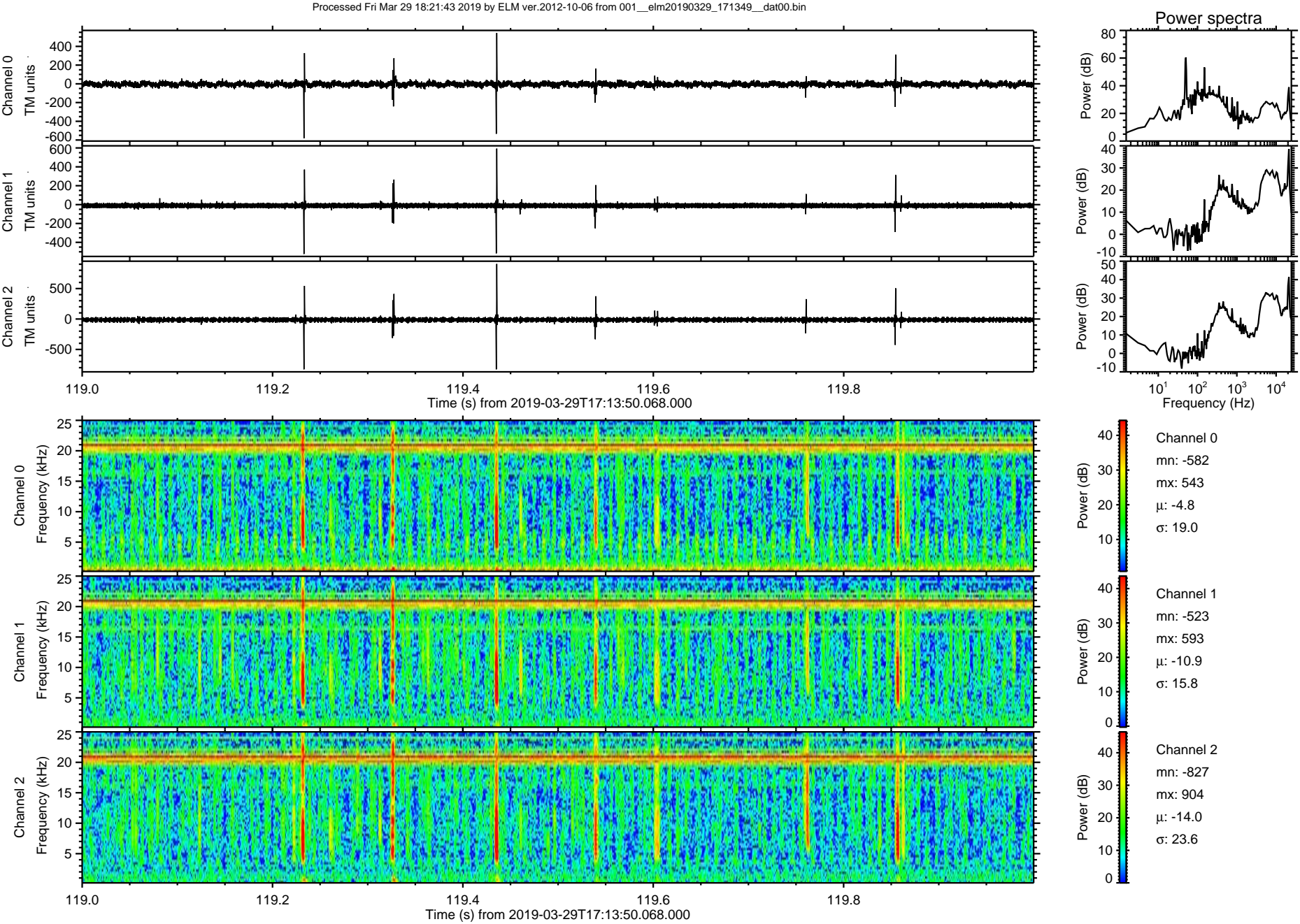




Processed Fri Mar 29 18:21:42 2019 by ELM ver.2012-10-06 from 001\_\_elm20190329\_171349\_\_dat00.bin

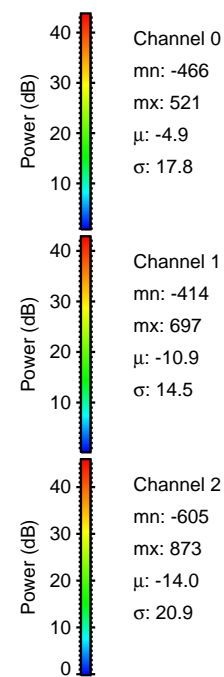
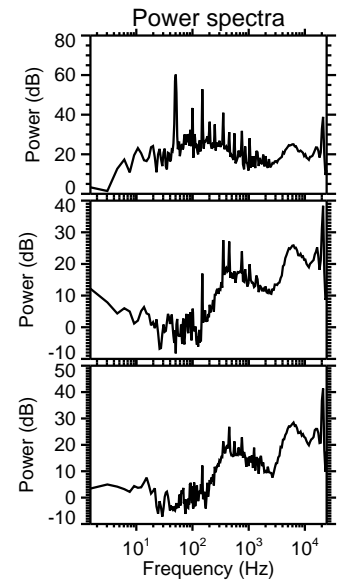
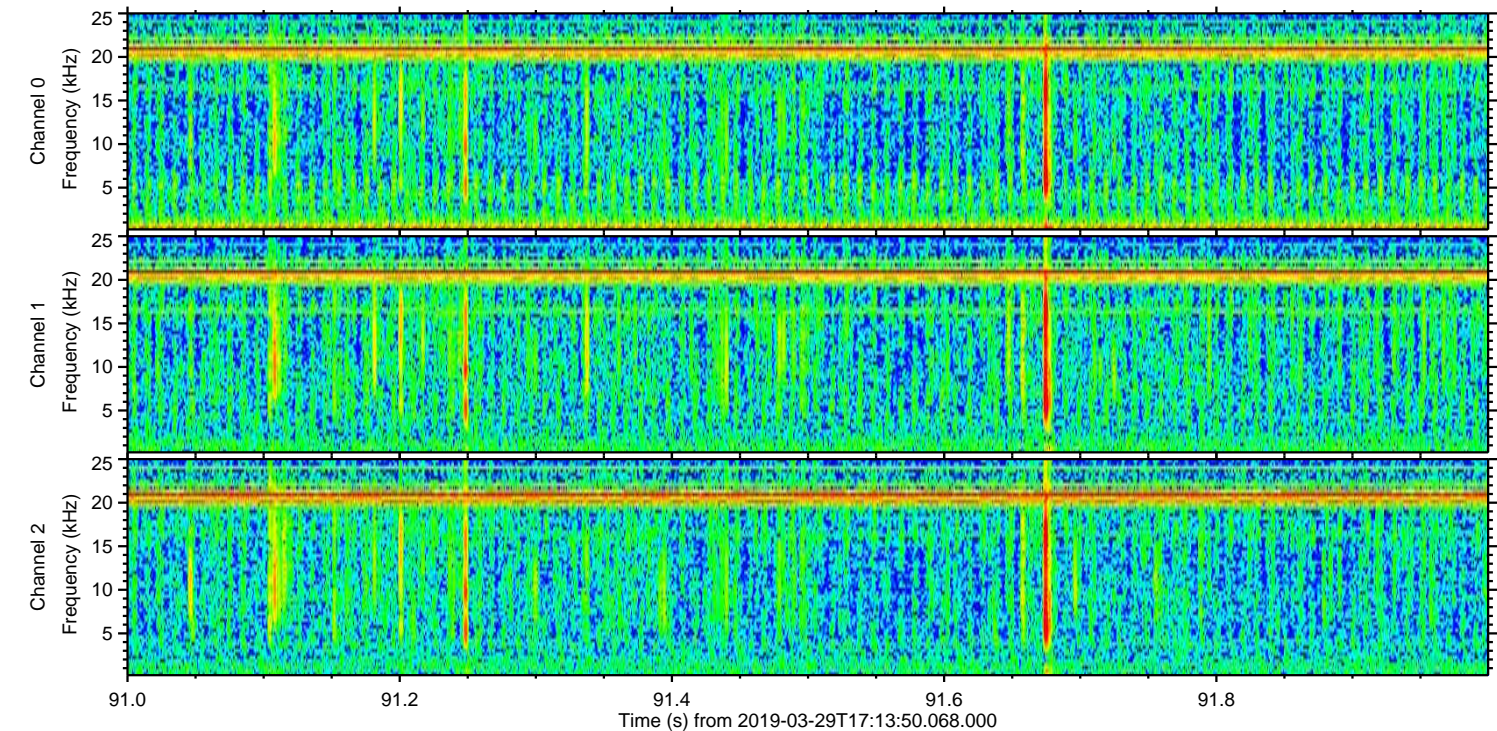
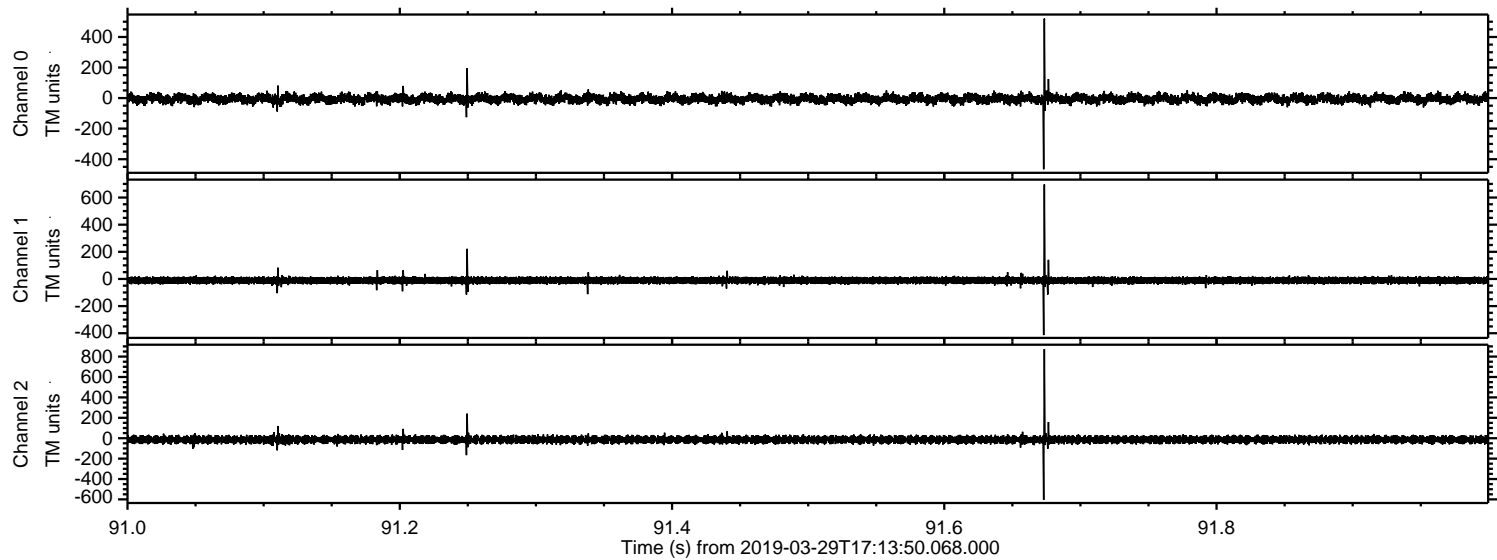








Processed Fri Mar 29 18:21:45 2019 by ELM ver.2012-10-06 from 001\_\_elm20190329\_171349\_\_dat00.bin



Channel 0  
mn: -466  
mx: 521  
 $\mu$ : -4.9  
 $\sigma$ : 17.8

Channel 1  
mn: -414  
mx: 697  
 $\mu$ : -10.9  
 $\sigma$ : 14.5

Channel 2  
mn: -605  
mx: 873  
 $\mu$ : -14.0  
 $\sigma$ : 20.9



