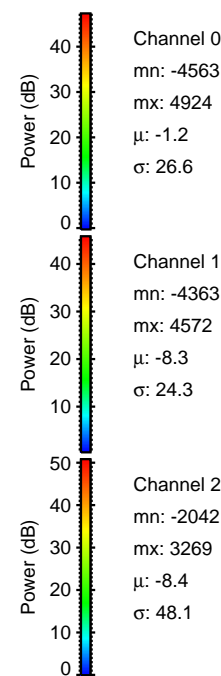
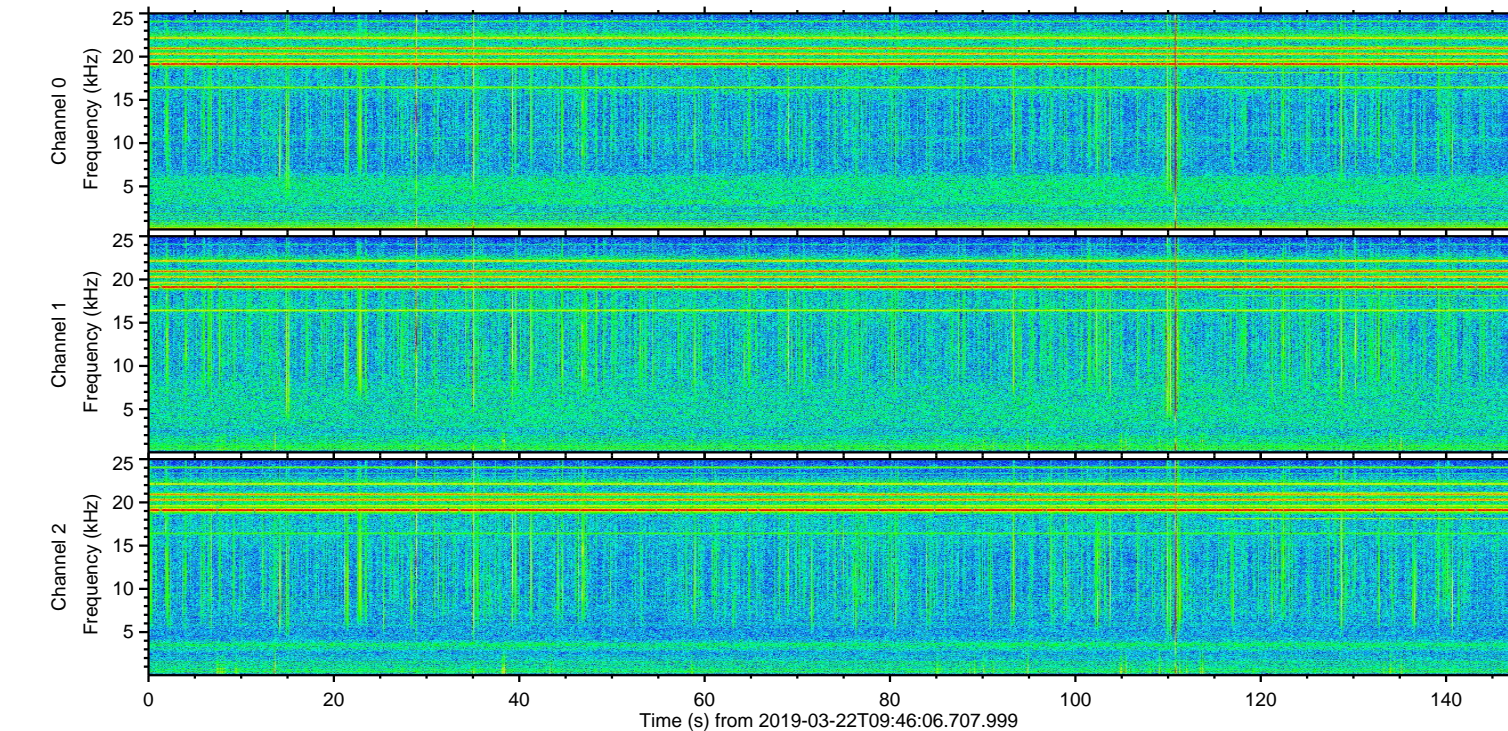
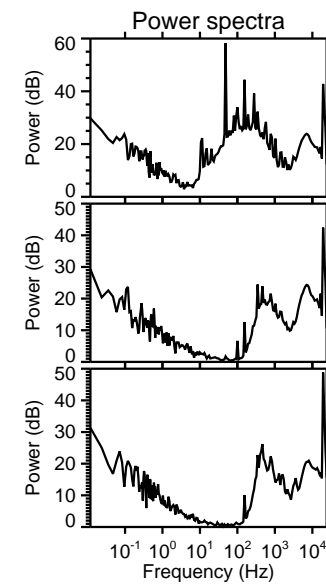
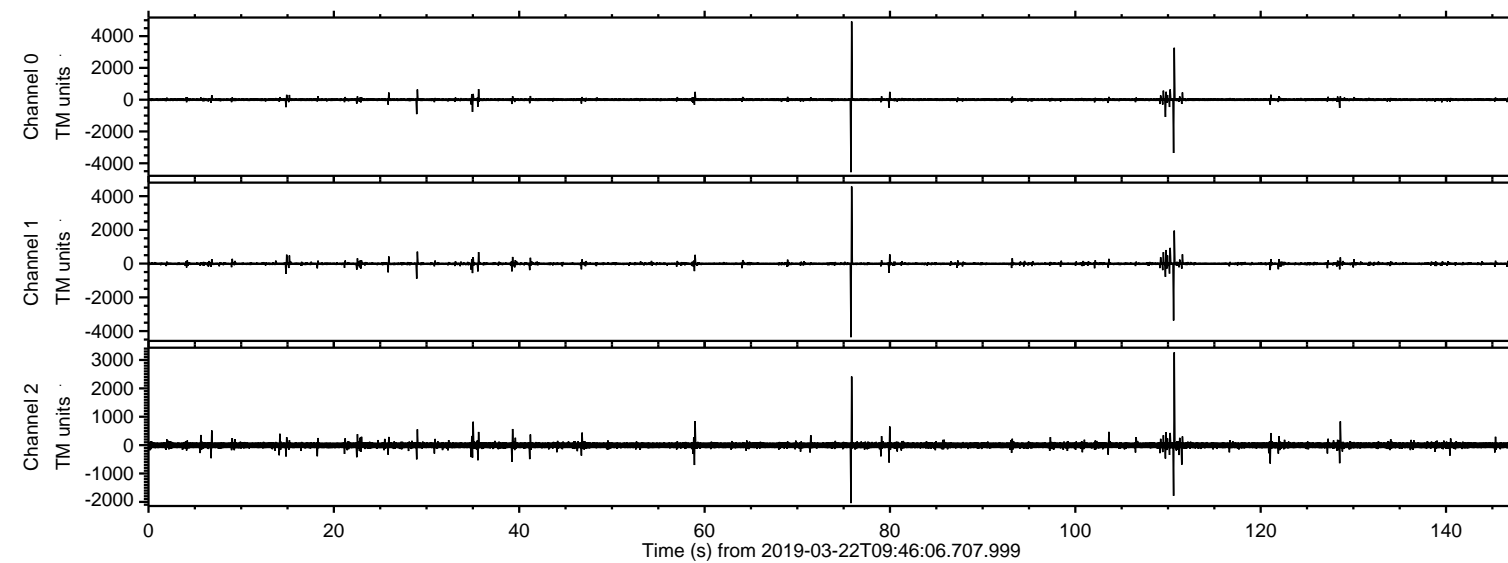
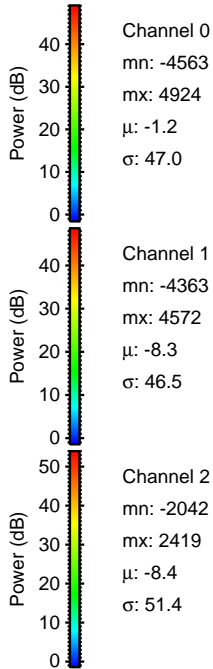
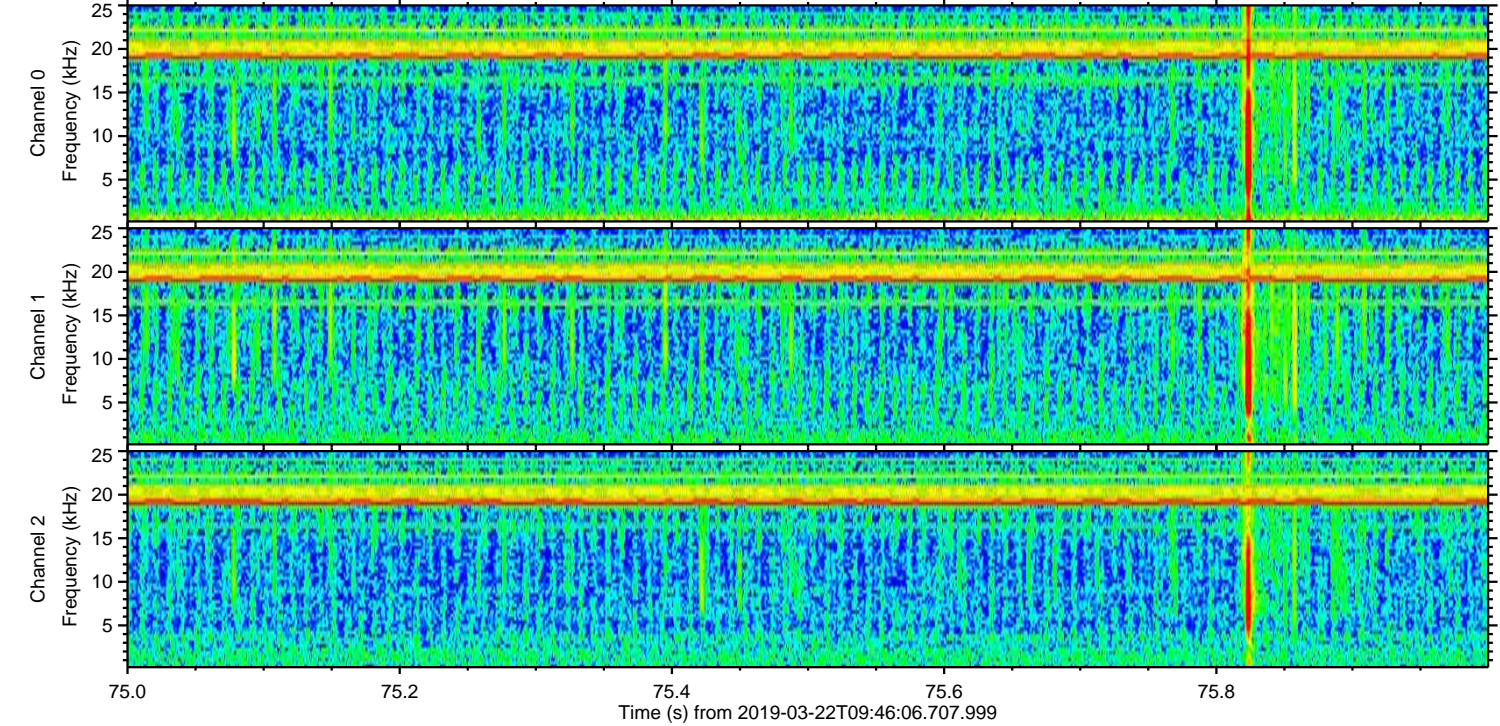
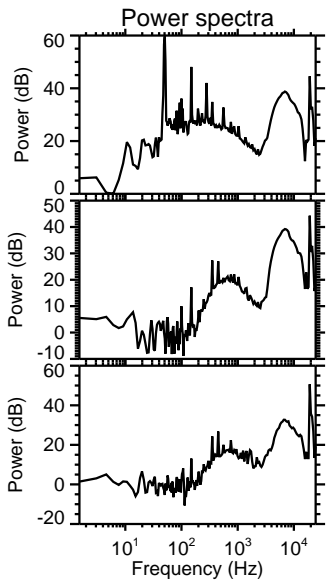
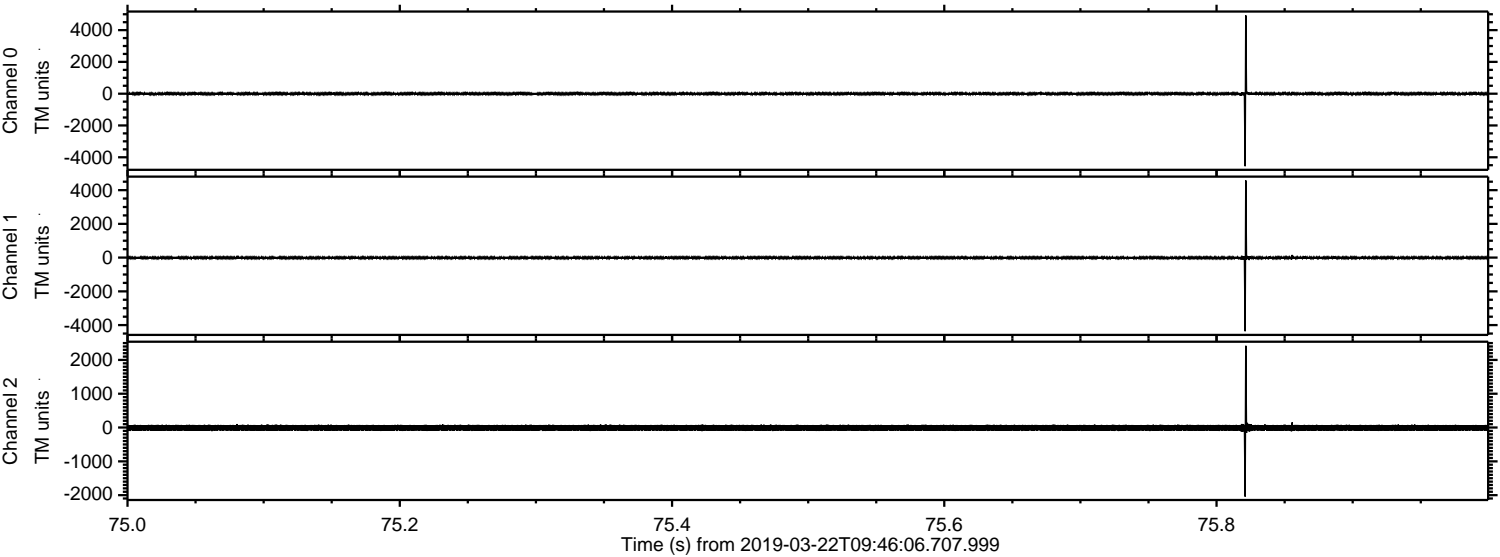


ELMAVAN 3D WAVEFORMS (Measured data sampled at 50 kHz) 51000 packets of 144 samples from 2019-03-22T09:46:06.707.999.

Processed Fri Mar 22 10:53:26 2019 by ELM ver.2012-10-06 from 001__elm20190322_094605__dat00.bin

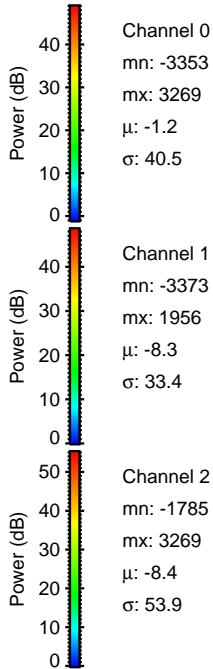
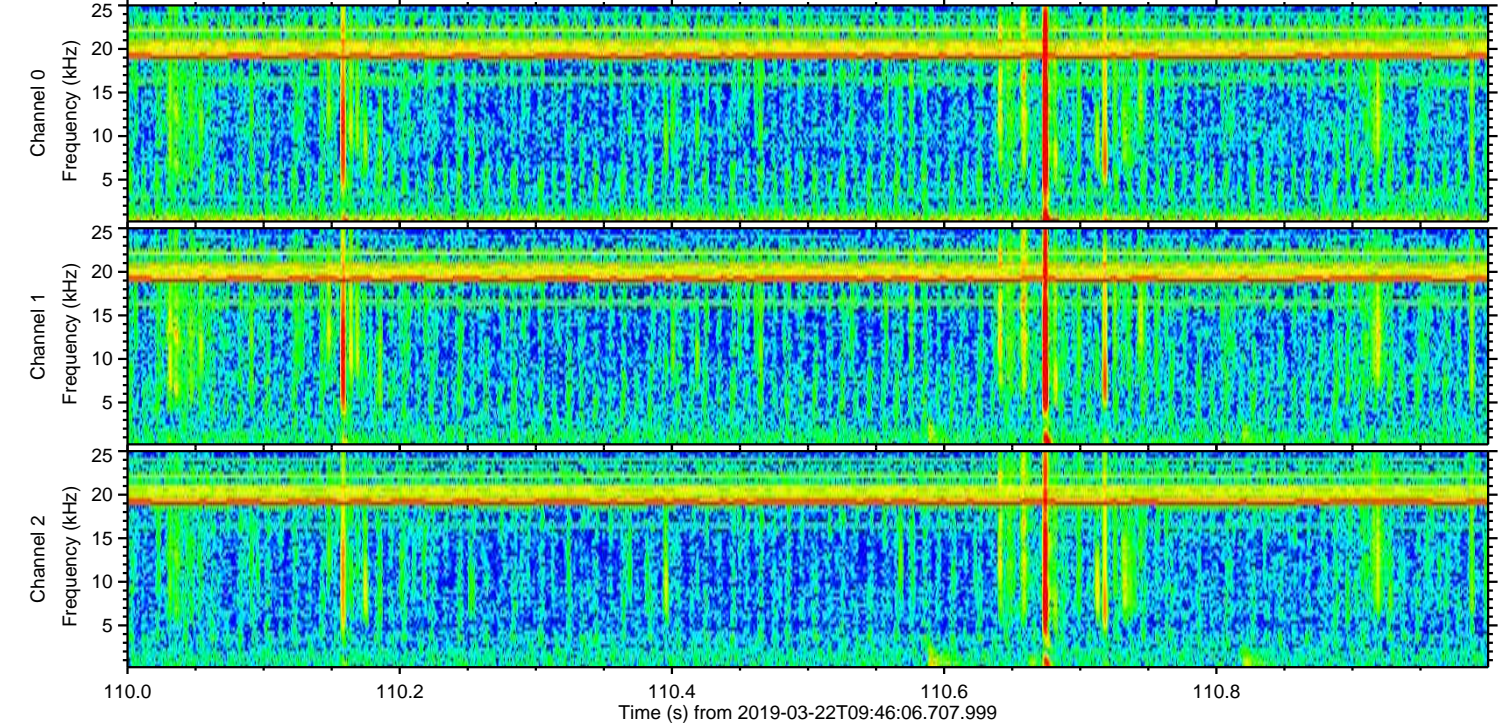
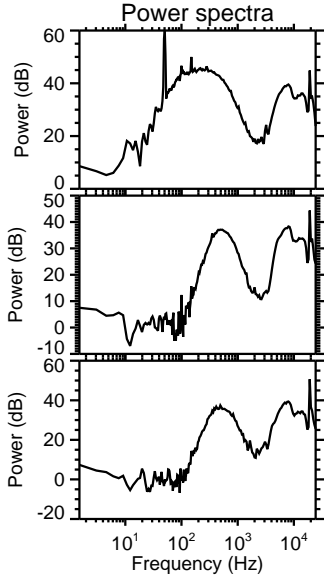
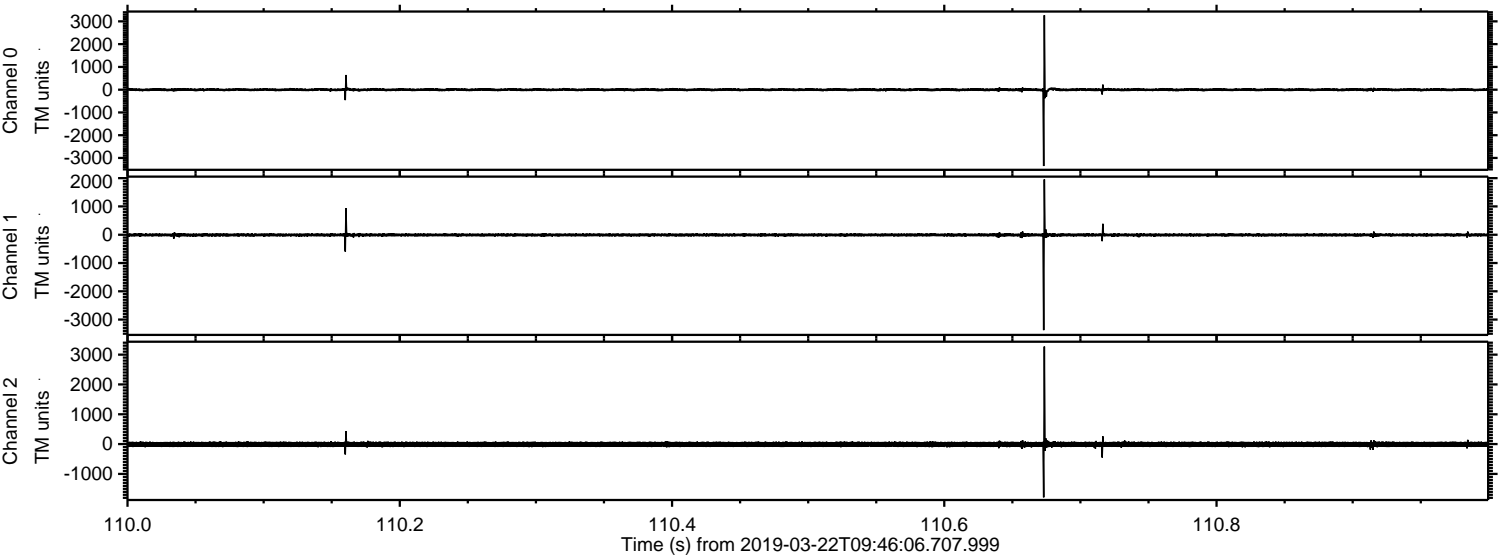


Processed Fri Mar 22 10:53:32 2019 by ELM ver.2012-10-06 from 001__elm20190322_094605__dat00.bin



ELMAVAN 3D WAVEFORMS (Measured data sampled at 50 kHz) 51000 packets of 144 samples from 2019-03-22T09:46:06.707.999. Part 111/147

Processed Fri Mar 22 10:53:33 2019 by ELM ver.2012-10-06 from 001__elm20190322_094605__dat00.bin



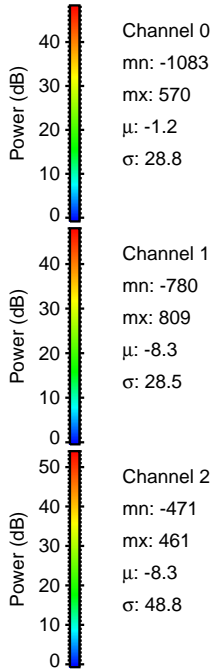
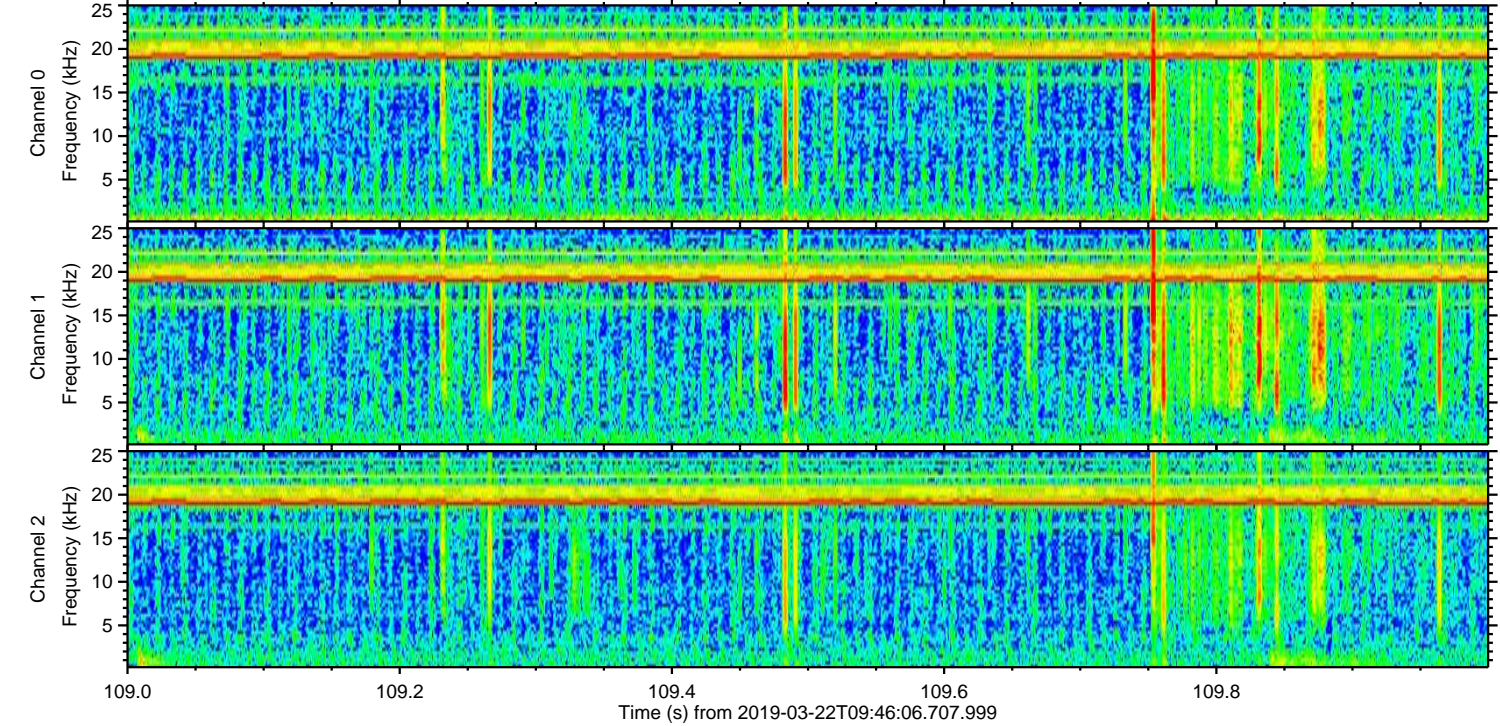
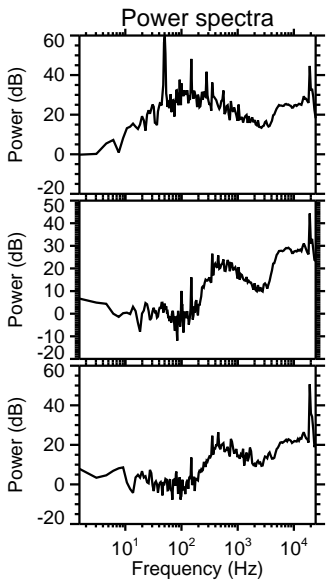
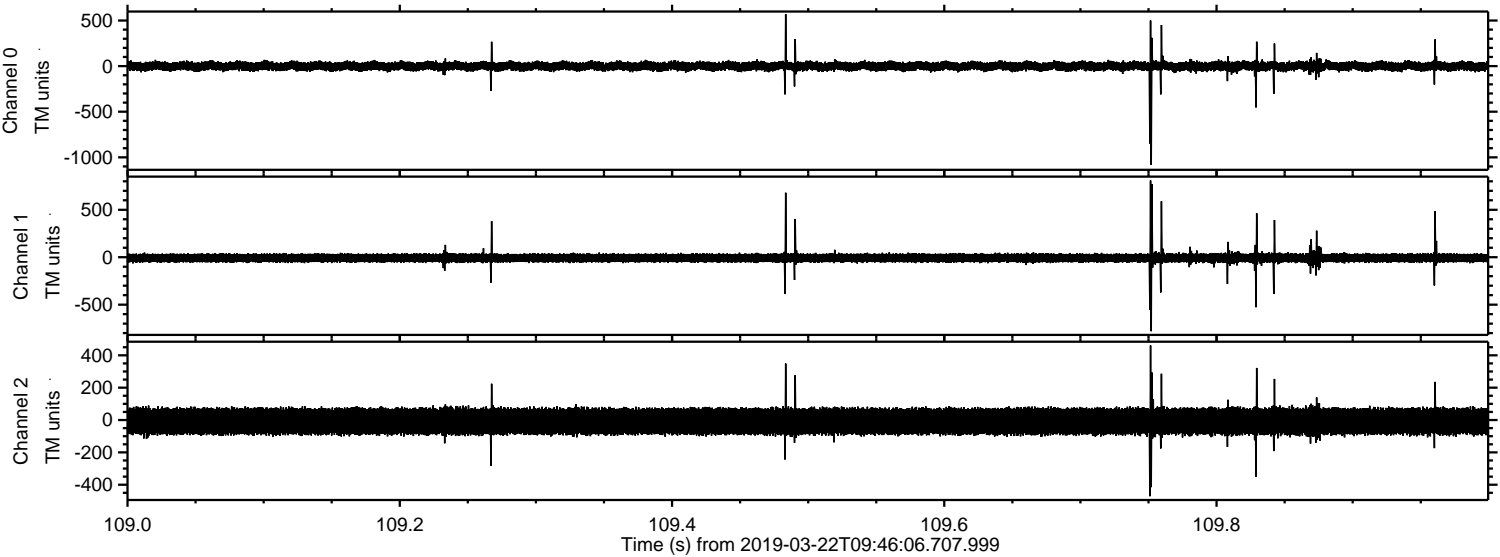
Channel 0
mn: -3353
mx: 3269
 μ : -1.2
 σ : 40.5

Channel 1
mn: -3373
mx: 1956
 μ : -8.3
 σ : 33.4

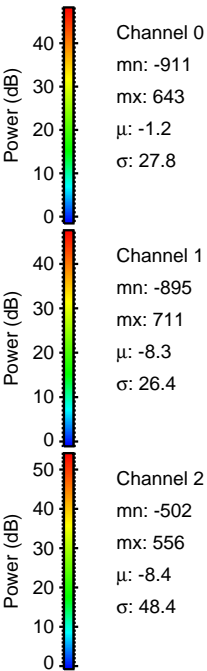
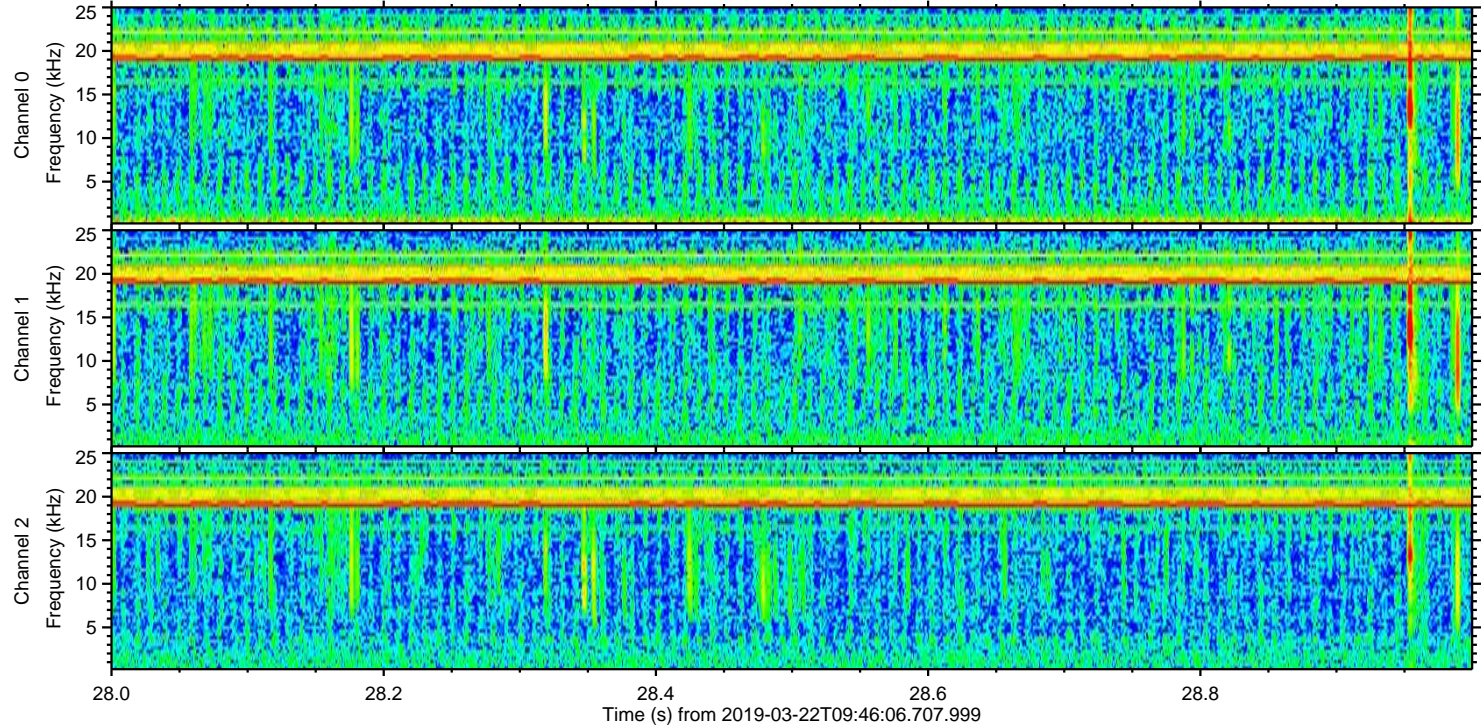
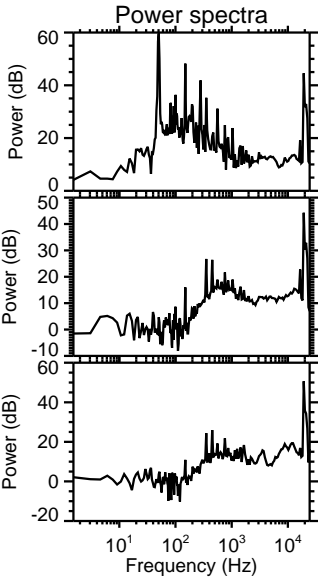
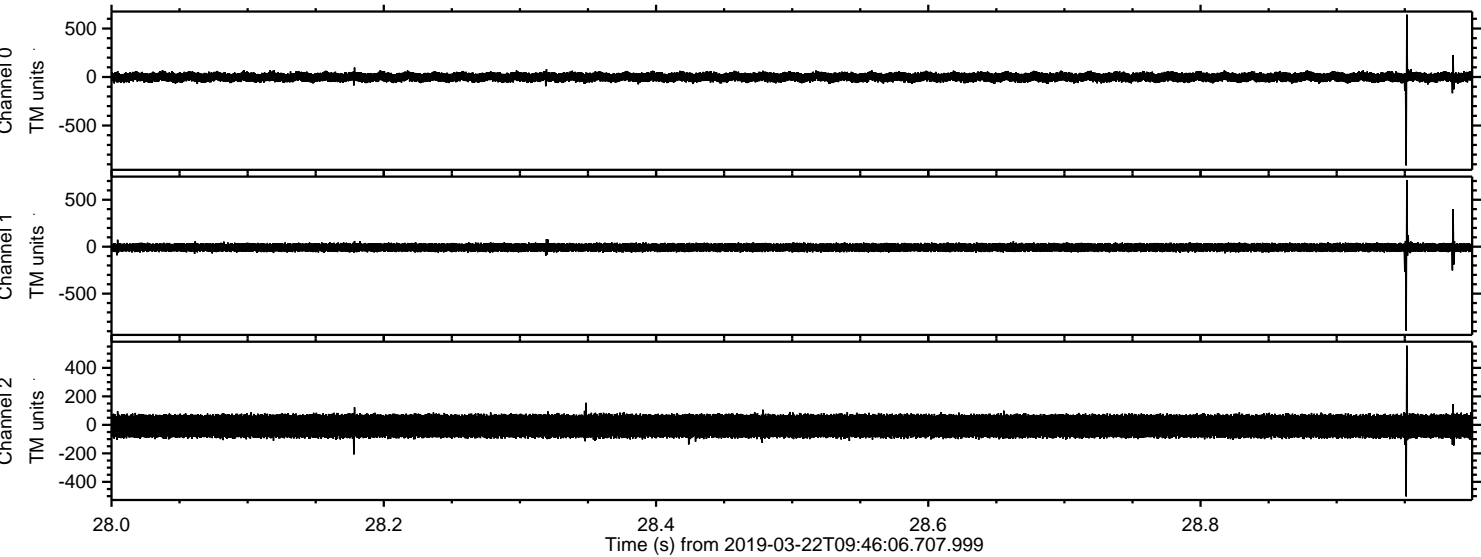
Channel 2
mn: -1785
mx: 3269
 μ : -8.4
 σ : 53.9

ELMAVAN 3D WAVEFORMS (Measured data sampled at 50 kHz) 51000 packets of 144 samples from 2019-03-22T09:46:06.707.999. Part 110/147

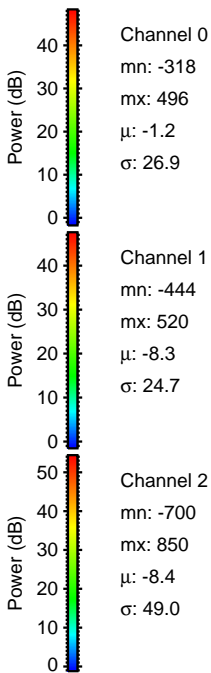
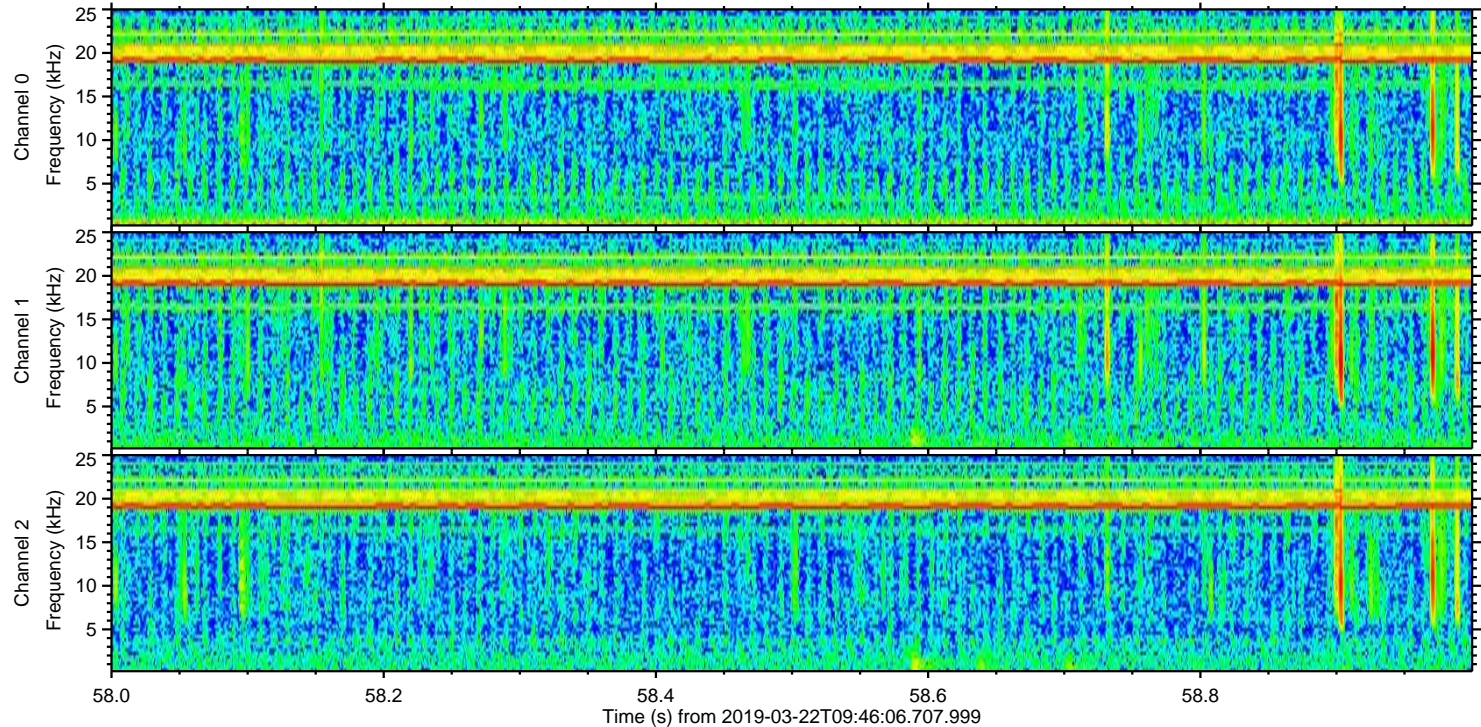
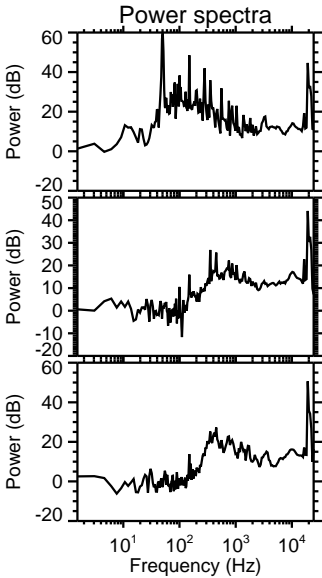
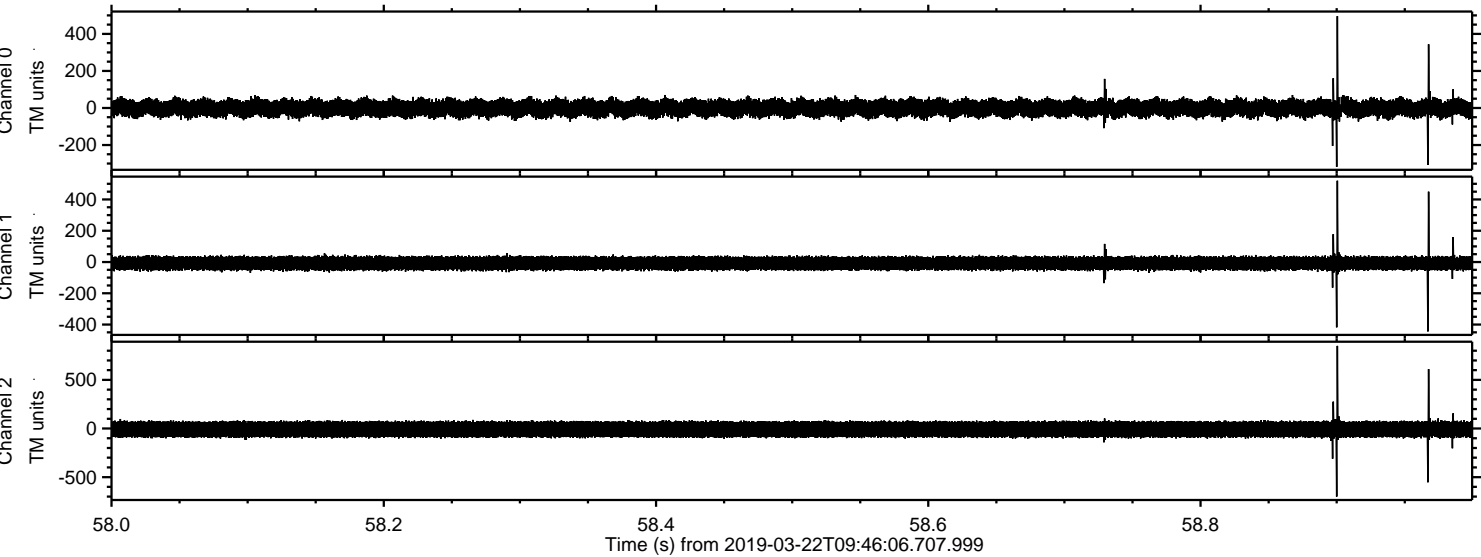
Processed Fri Mar 22 10:53:34 2019 by ELM ver.2012-10-06 from 001__elm20190322_094605__dat00.bin

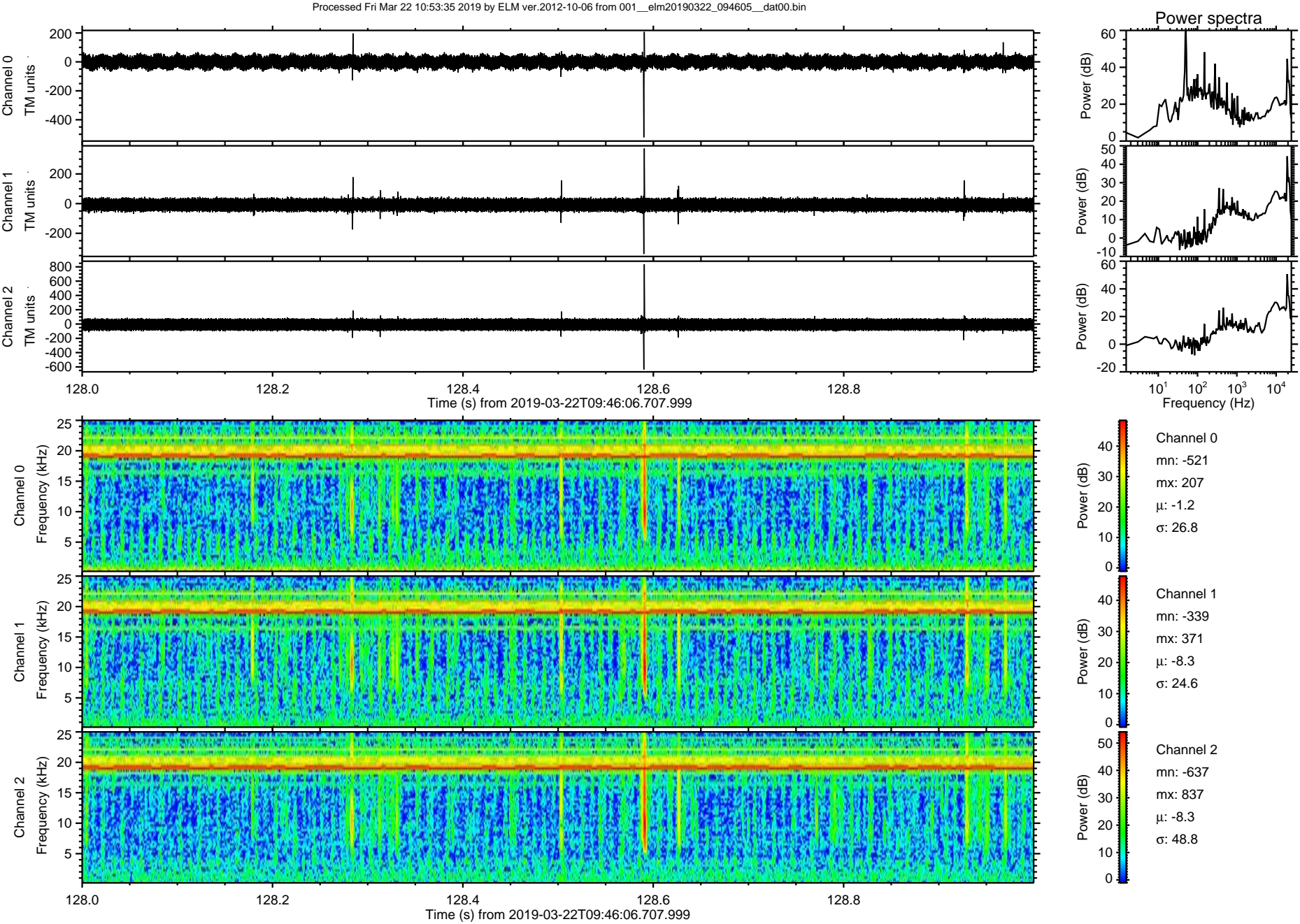


Processed Fri Mar 22 10:53:34 2019 by ELM ver.2012-10-06 from 001__elm20190322_094605__dat00.bin

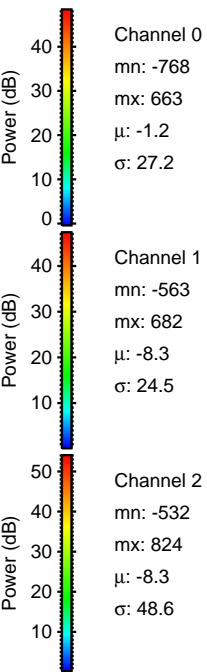
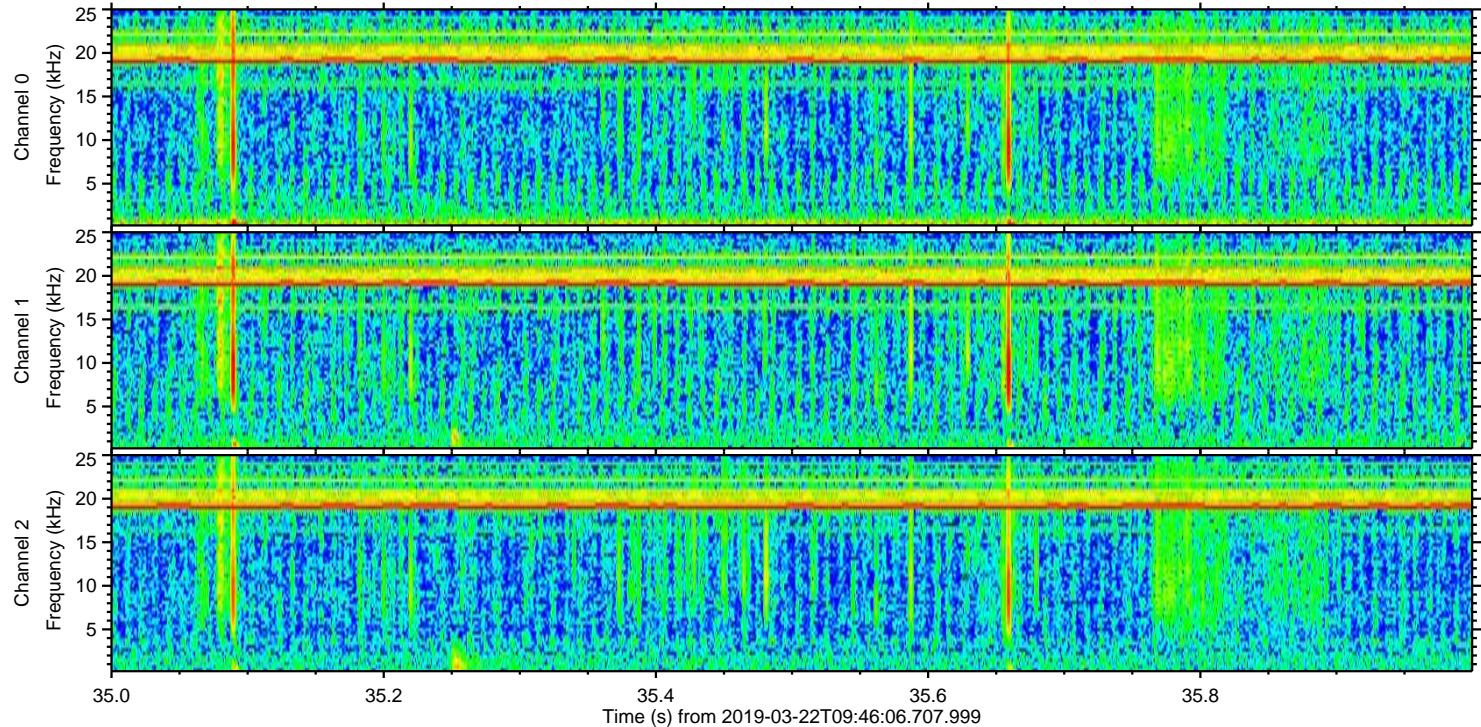
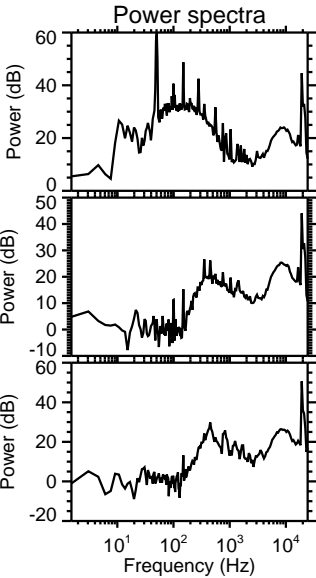
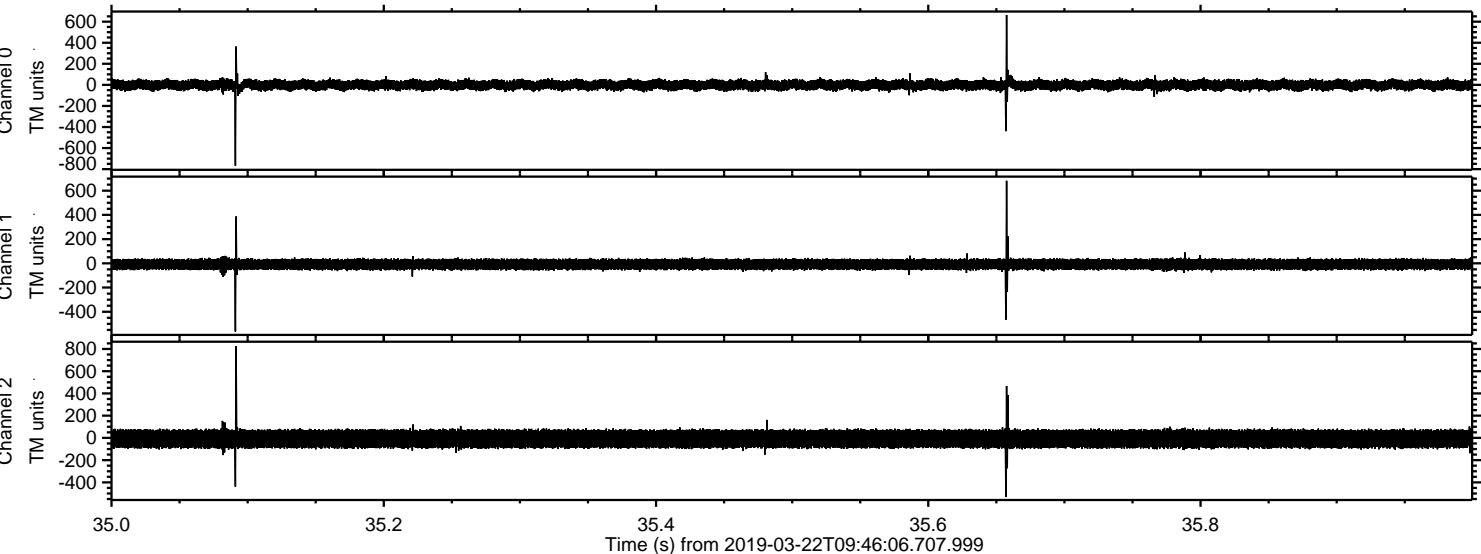


Processed Fri Mar 22 10:53:35 2019 by ELM ver.2012-10-06 from 001__elm20190322_094605__dat00.bin

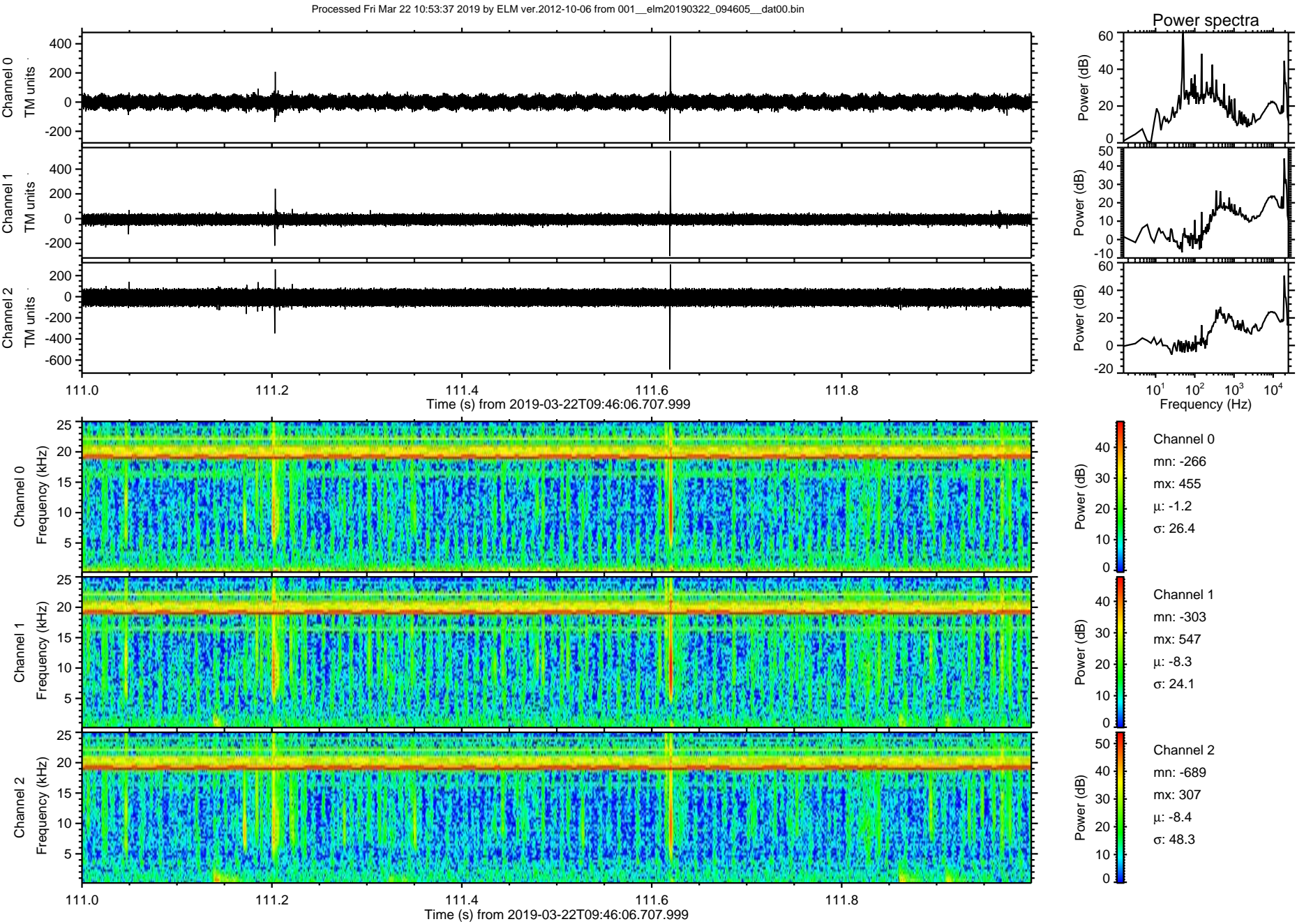




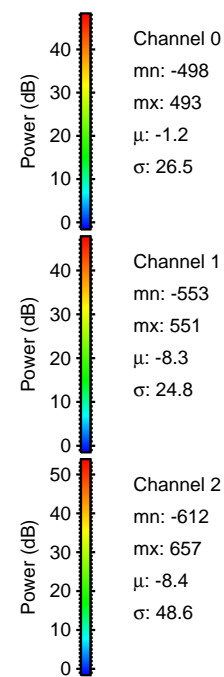
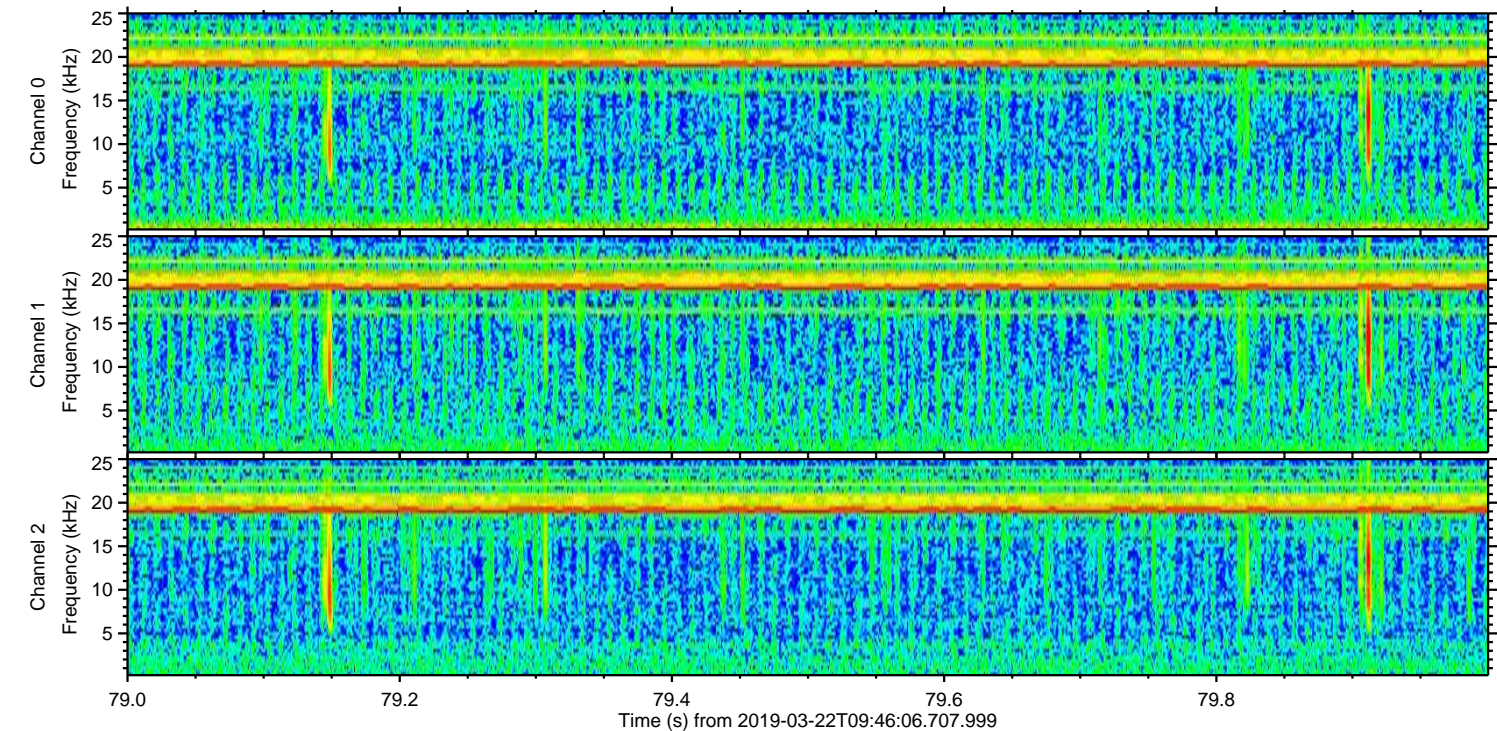
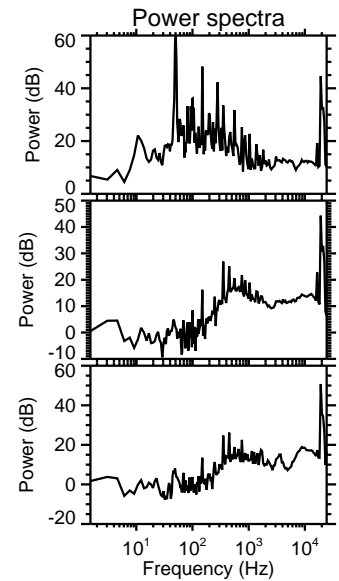
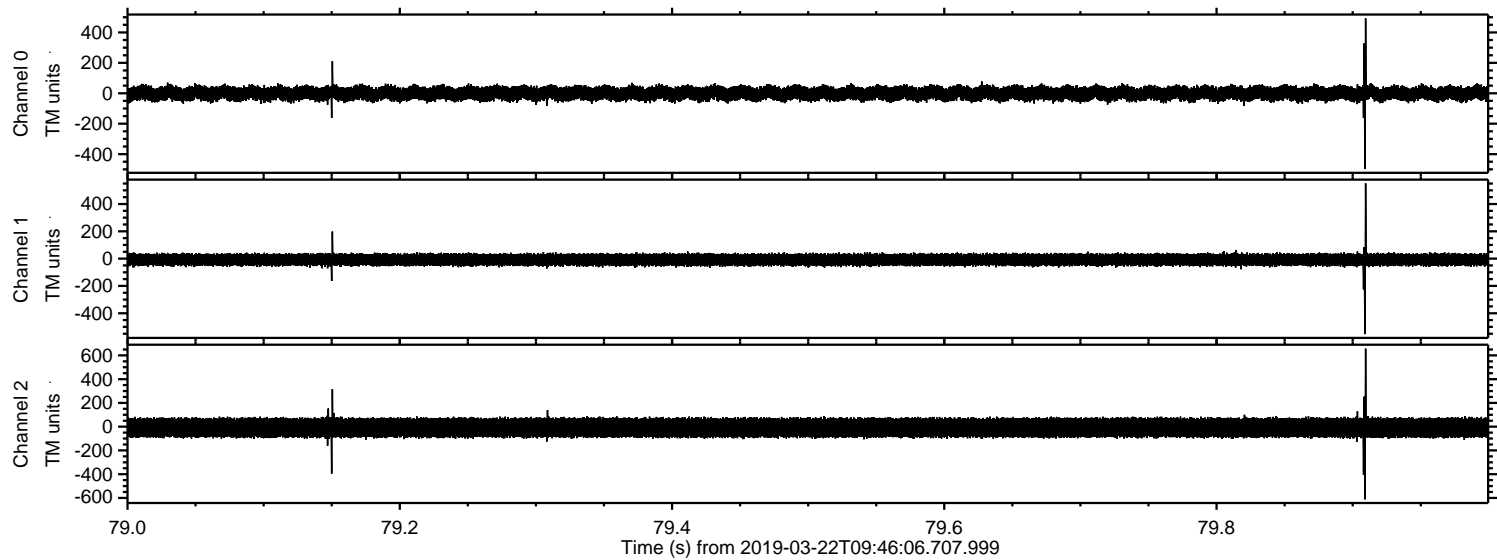
Processed Fri Mar 22 10:53:36 2019 by ELM ver.2012-10-06 from 001__elm20190322_094605__dat00.bin



ELMAVAN 3D WAVEFORMS (Measured data sampled at 50 kHz) 51000 packets of 144 samples from 2019-03-22T09:46:06.707.999. Part 112/147



Processed Fri Mar 22 10:53:37 2019 by ELM ver.2012-10-06 from 001__elm20190322_094605__dat00.bin



Channel 0
mn: -498
mx: 493
 μ : -1.2
 σ : 26.5

Channel 1
mn: -553
mx: 551
 μ : -8.3
 σ : 24.8

Channel 2
mn: -612
mx: 657
 μ : -8.4
 σ : 48.6

Processed Fri Mar 22 10:53:38 2019 by ELM ver.2012-10-06 from 001__elm20190322_094605__dat00.bin

