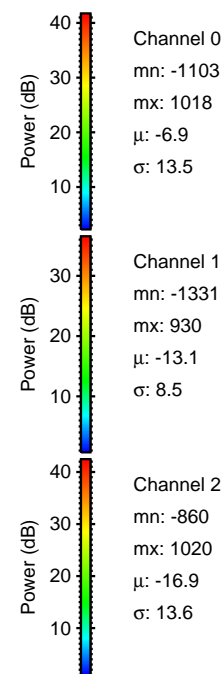
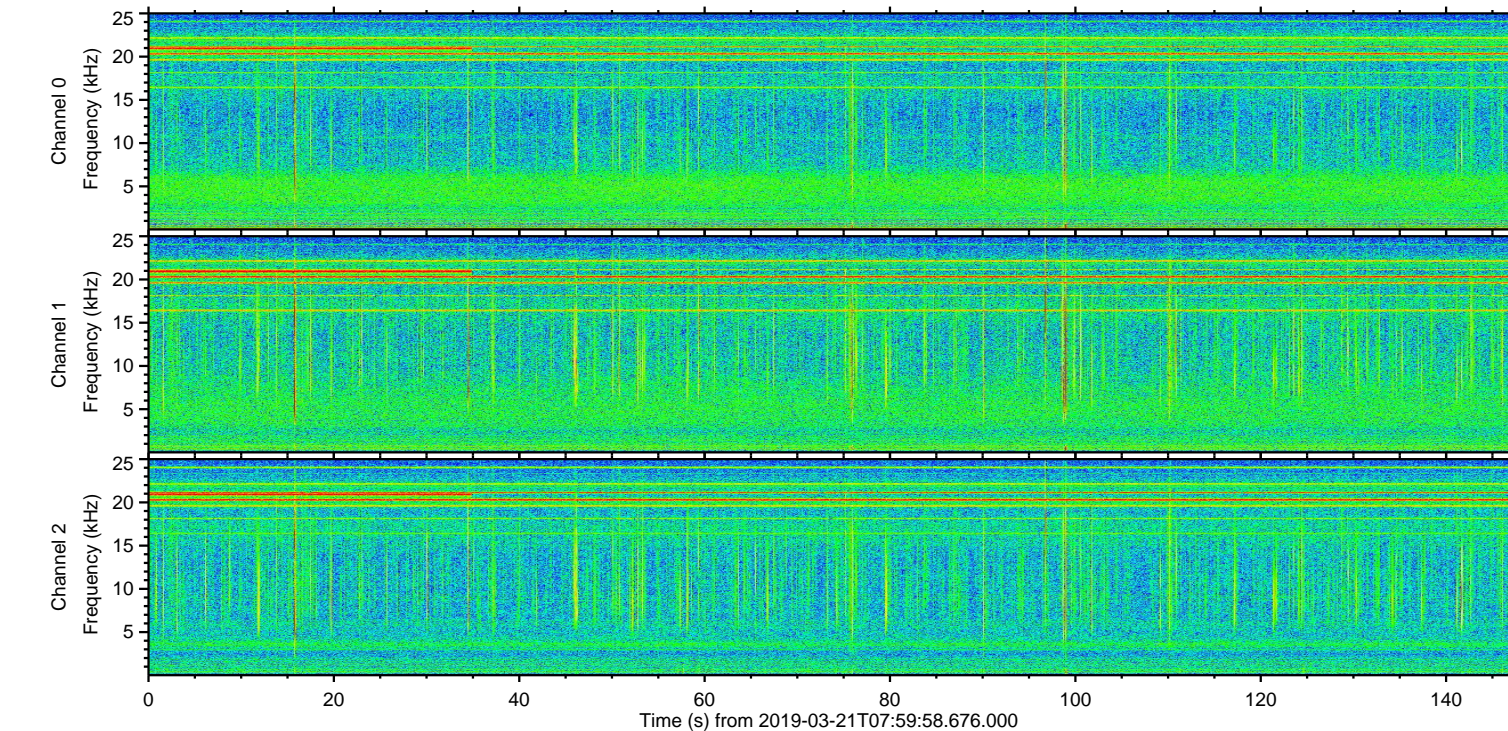
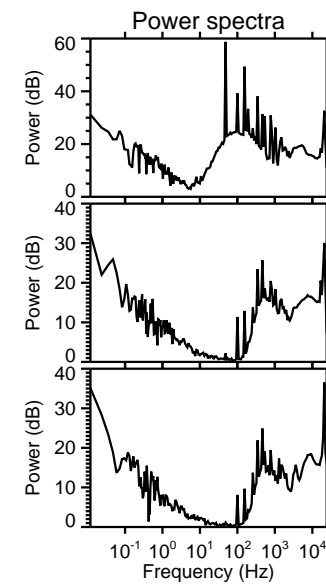
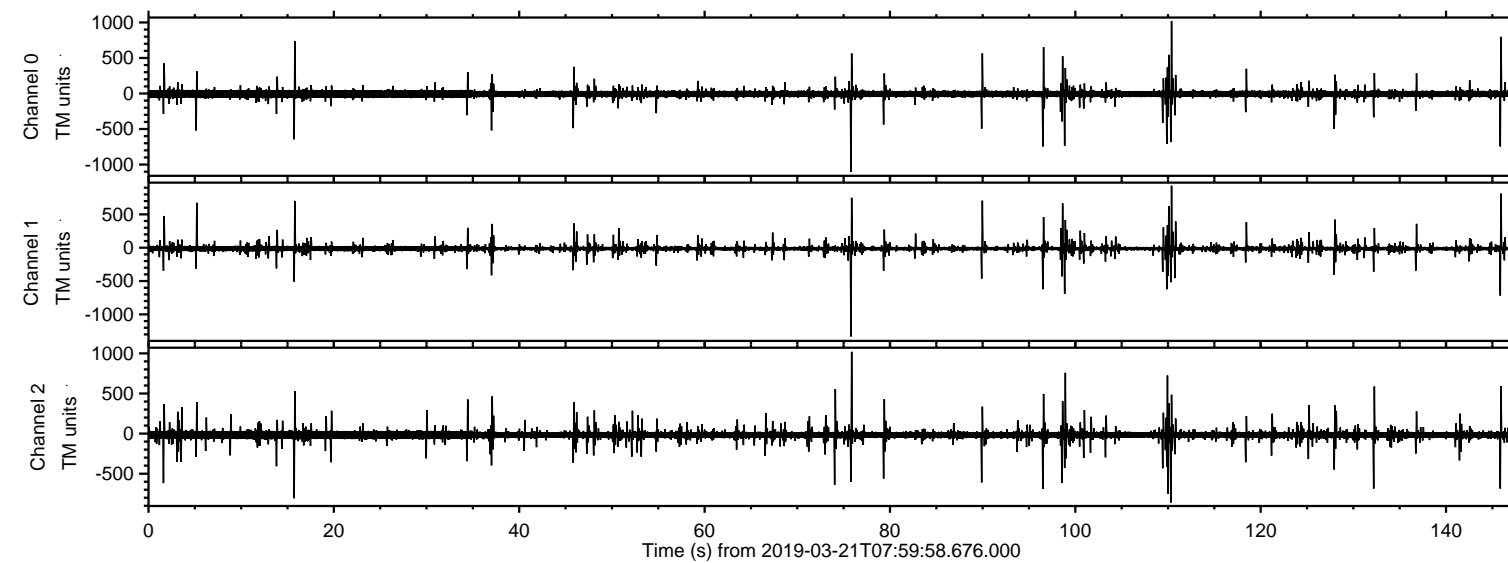


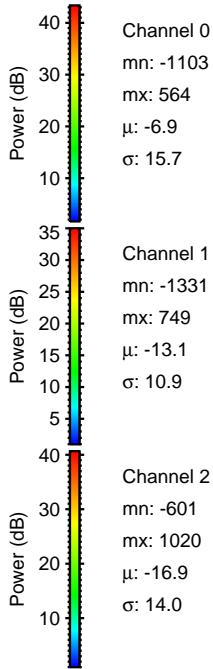
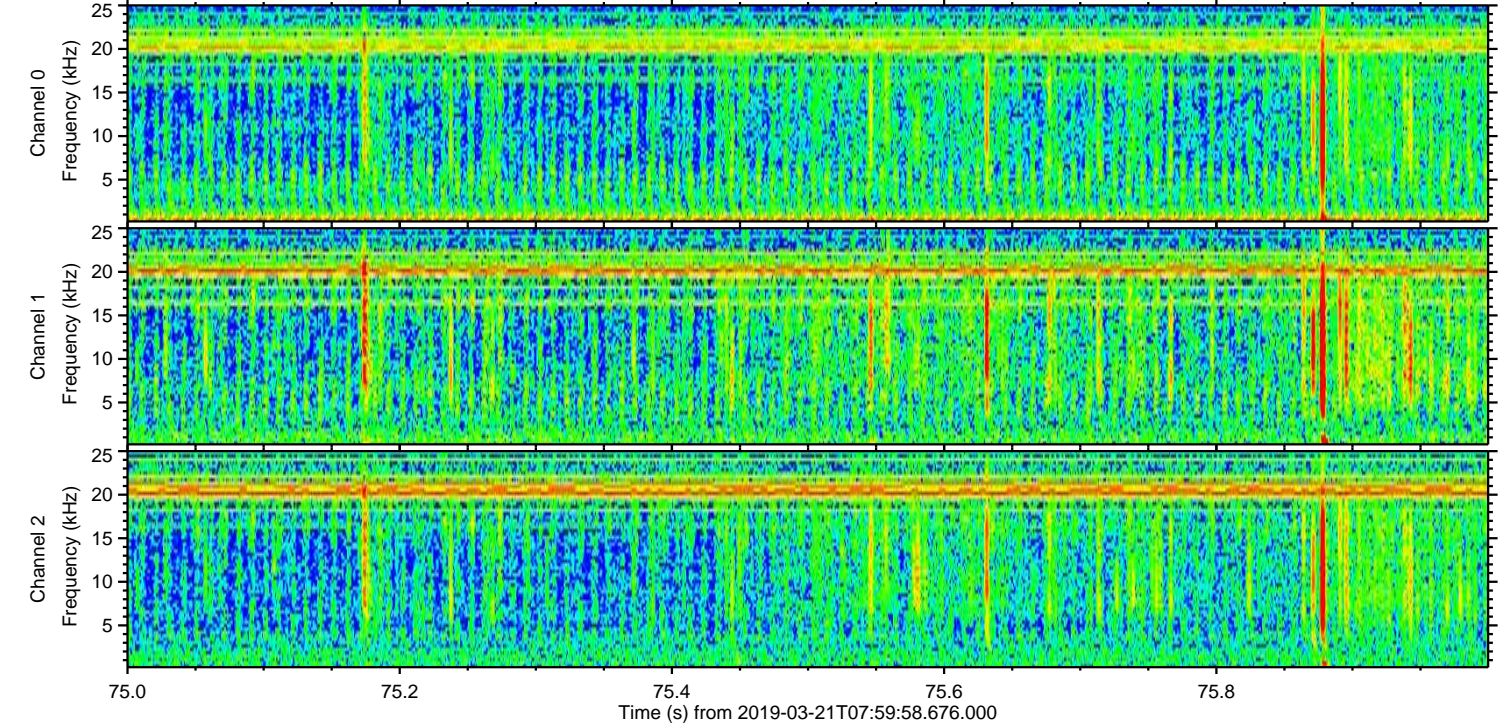
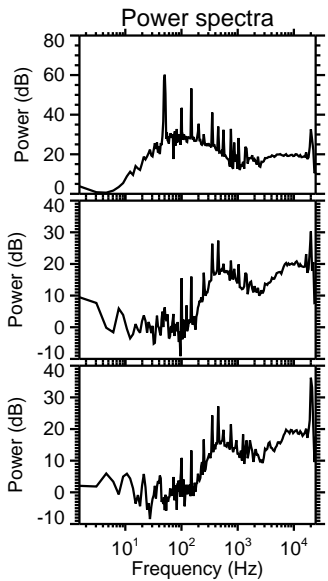
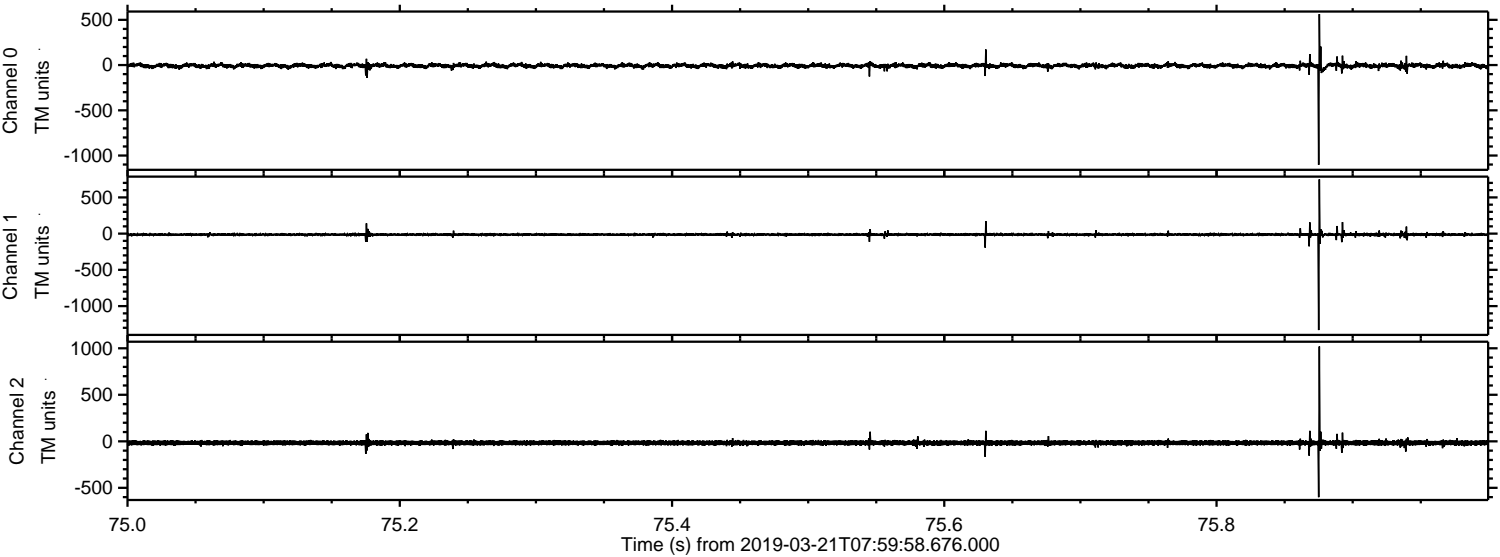
# ELMAVAN 3D WAVEFORMS (Measured data sampled at 50 kHz) 51000 packets of 144 samples from 2019-03-21T07:59:58.676.000.

Processed Thu Mar 21 09:07:54 2019 by ELM ver.2012-10-06 from 001\_\_elm20190321\_075957\_\_dat00.bin



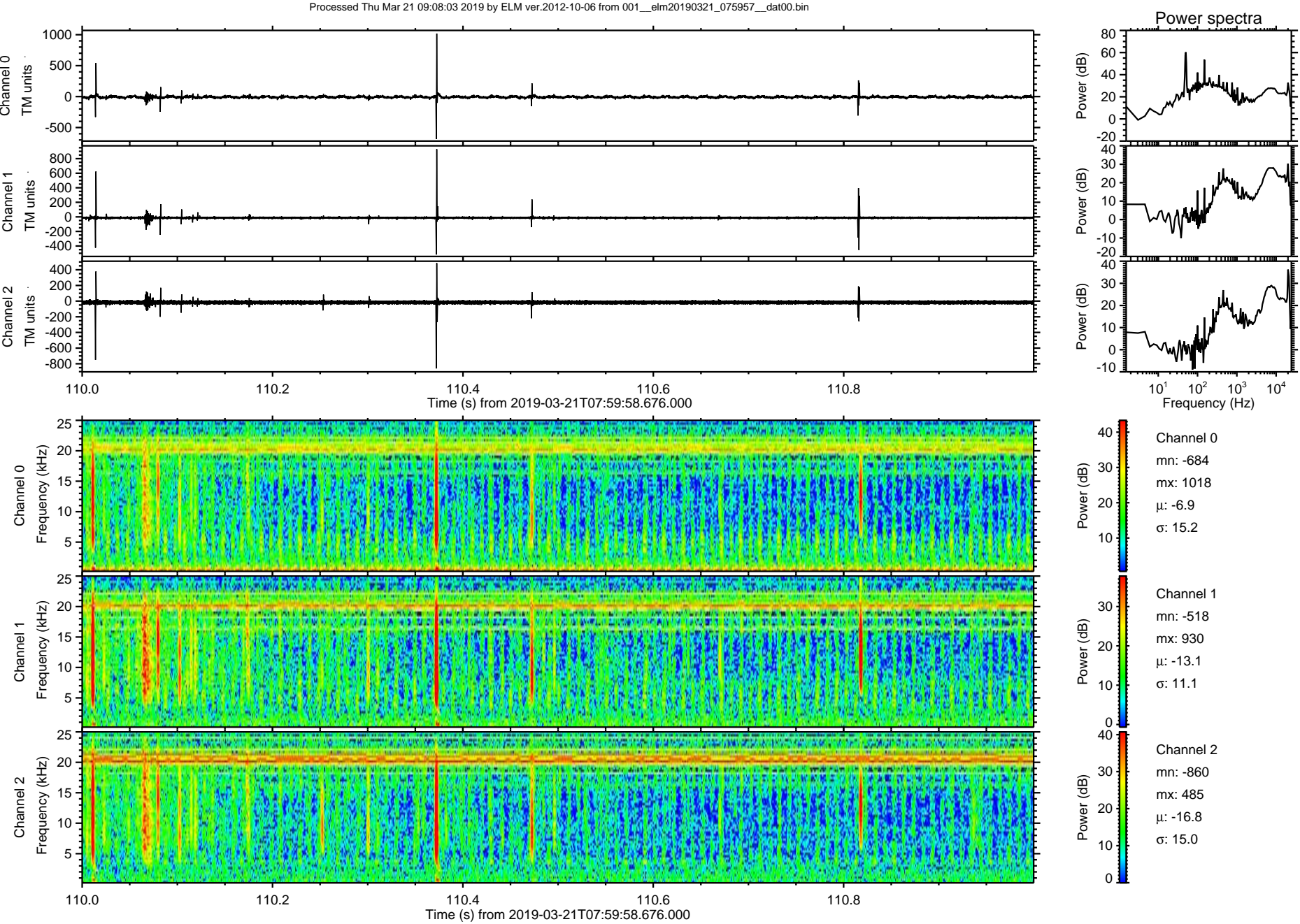


Processed Thu Mar 21 09:08:02 2019 by ELM ver.2012-10-06 from 001\_\_elm20190321\_075957\_\_dat00.bin





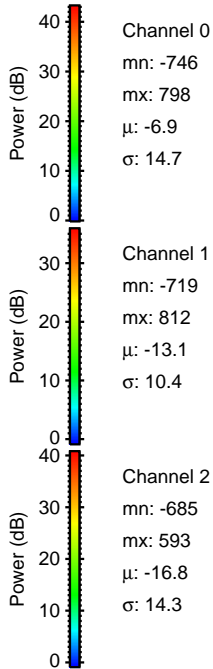
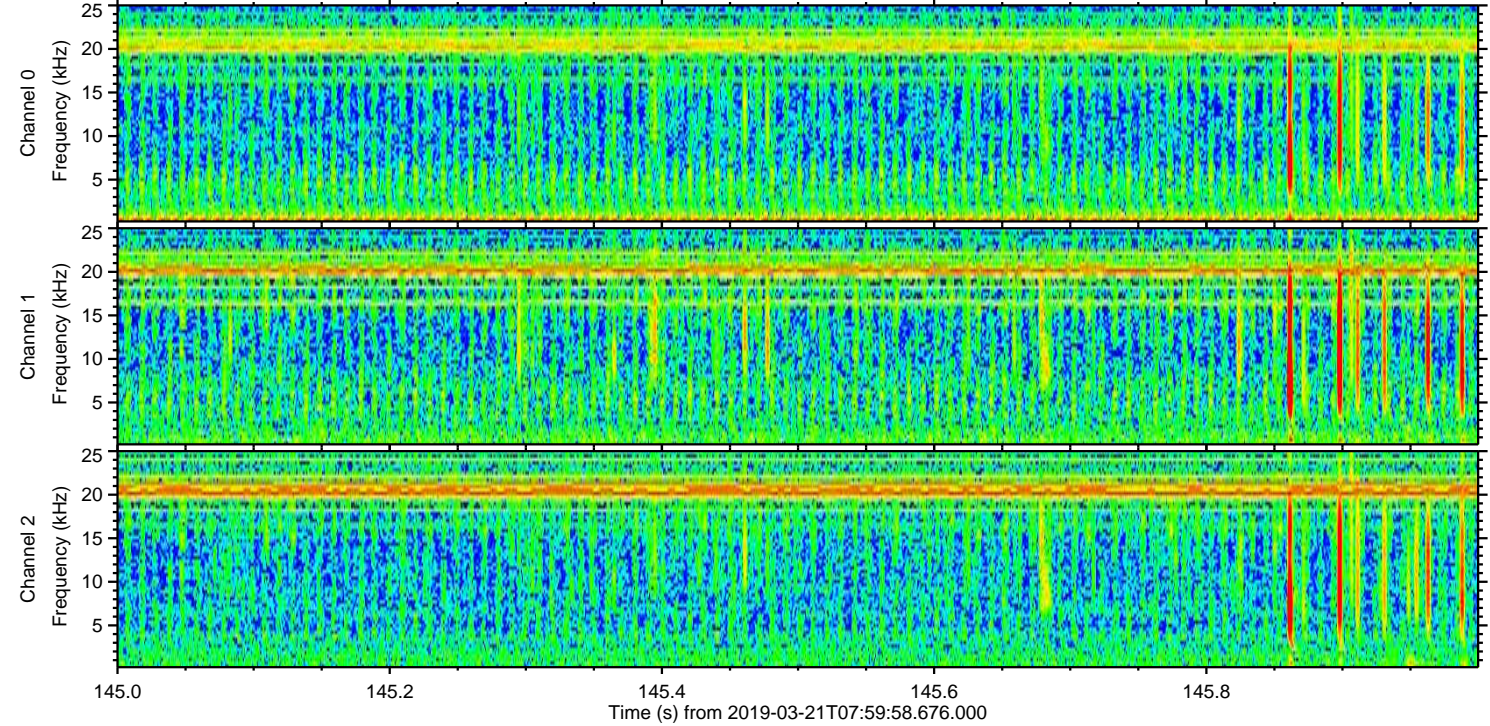
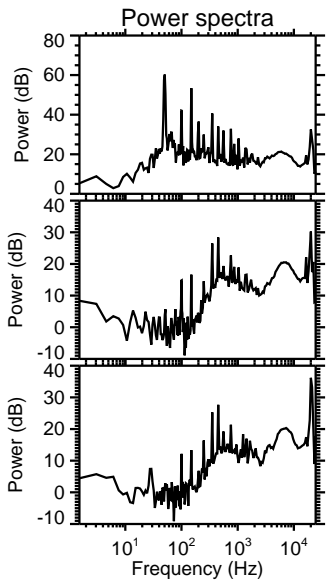
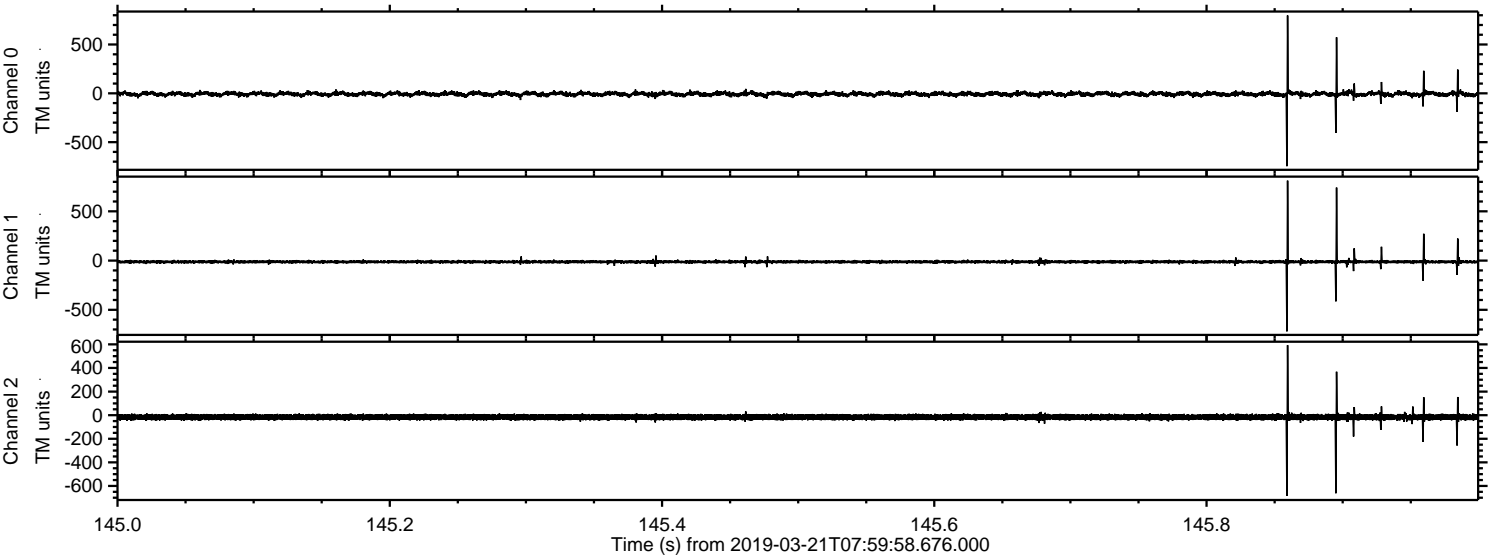
ELMAVAN 3D WAVEFORMS (Measured data sampled at 50 kHz) 51000 packets of 144 samples from 2019-03-21T07:59:58.676.000. Part 111/147





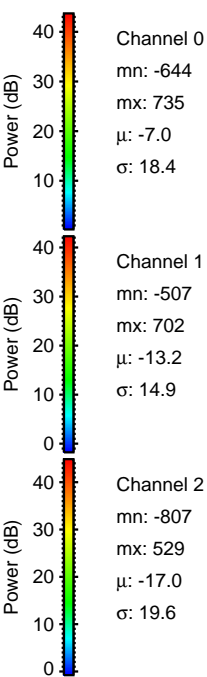
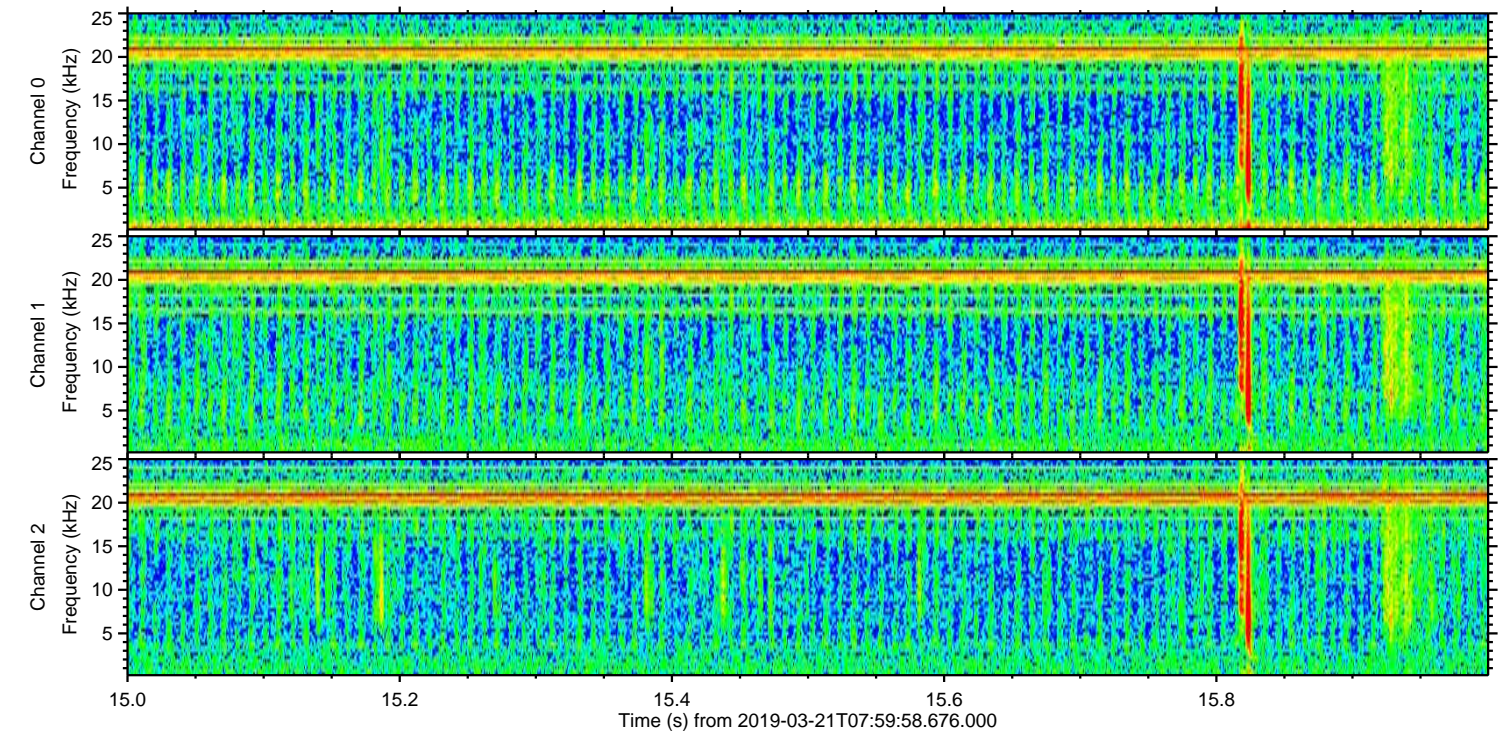
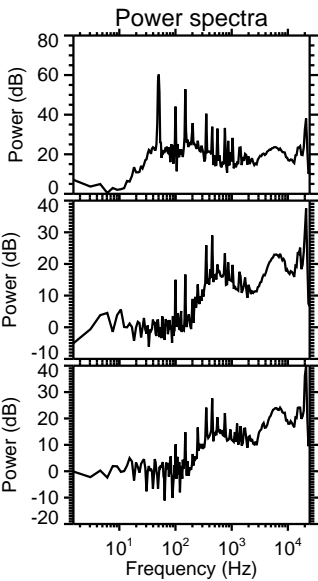
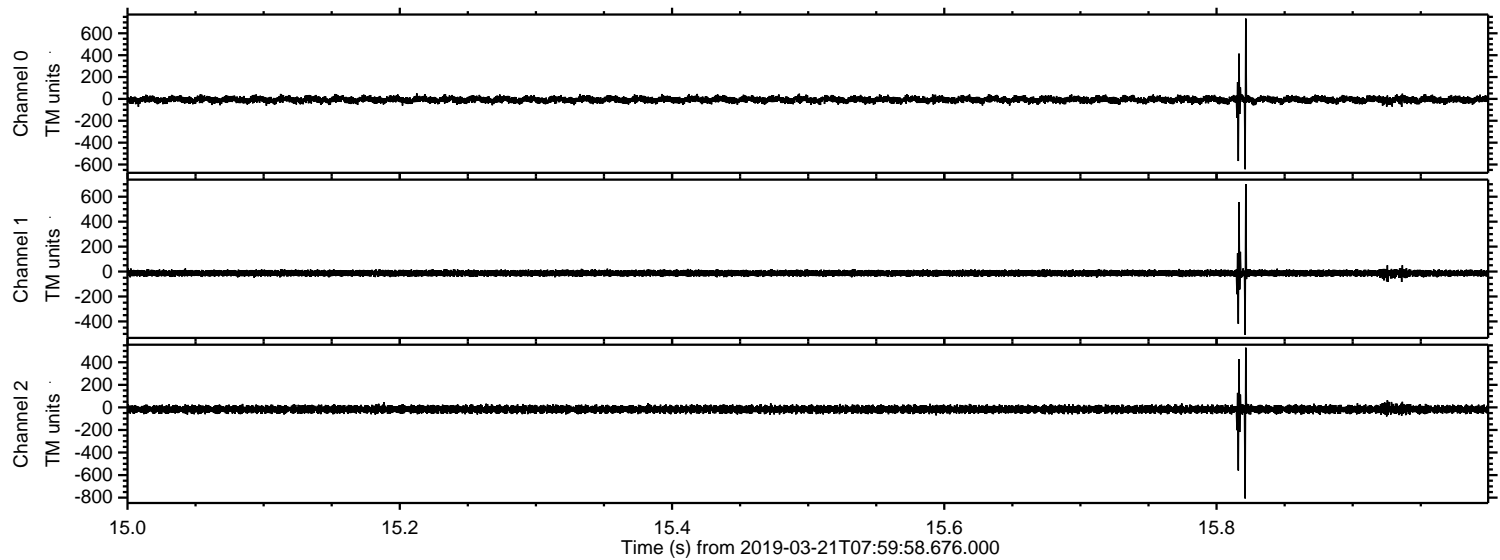
ELMAVAN 3D WAVEFORMS (Measured data sampled at 50 kHz) 51000 packets of 144 samples from 2019-03-21T07:59:58.676.000. Part 146/147

Processed Thu Mar 21 09:08:04 2019 by ELM ver.2012-10-06 from 001\_\_elm20190321\_075957\_\_dat00.bin



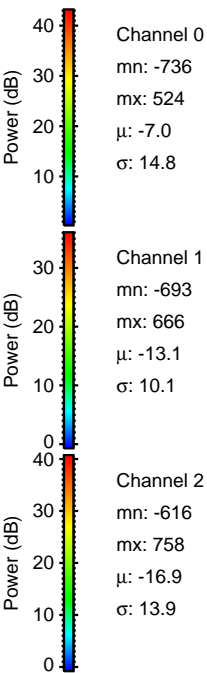
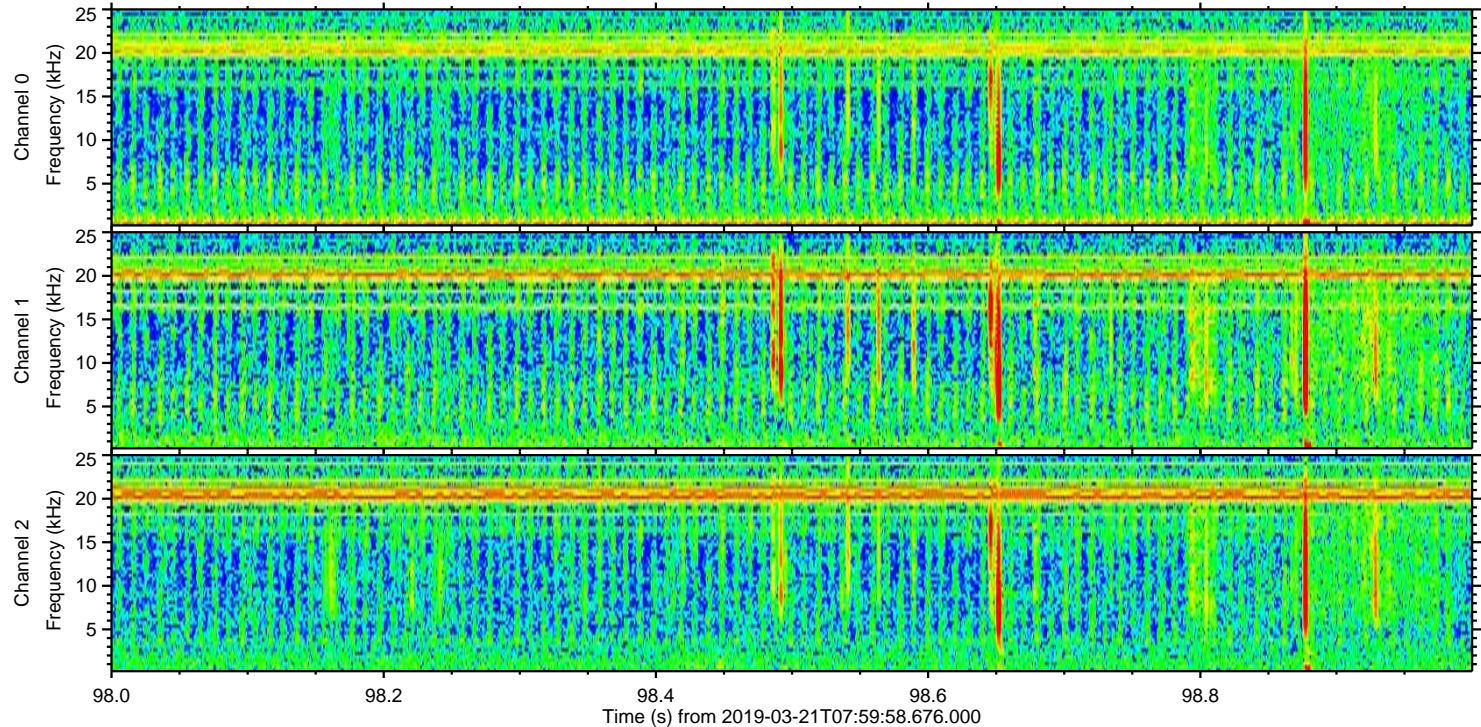
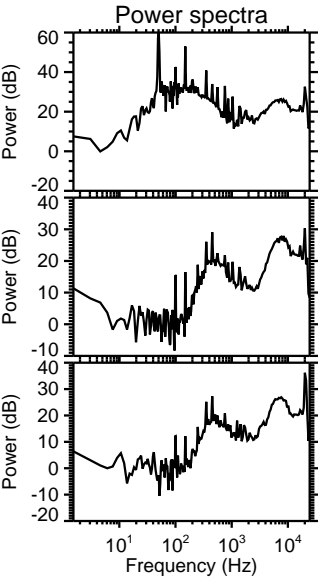
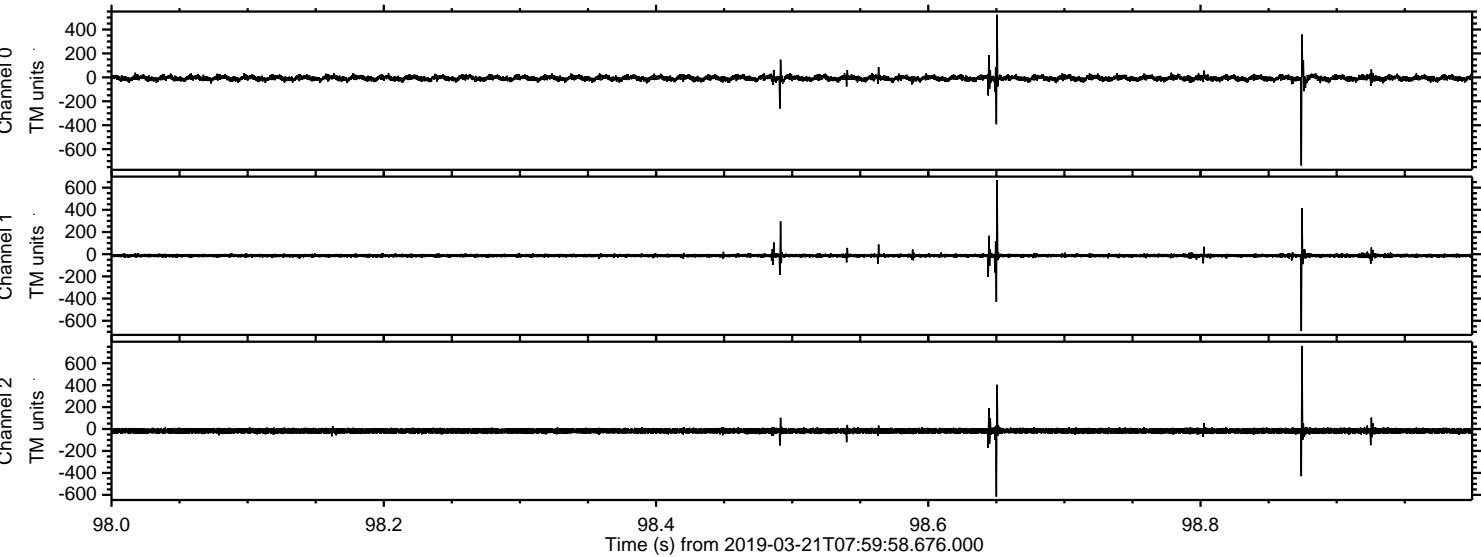


Processed Thu Mar 21 09:08:05 2019 by ELM ver.2012-10-06 from 001\_\_elm20190321\_075957\_\_dat00.bin



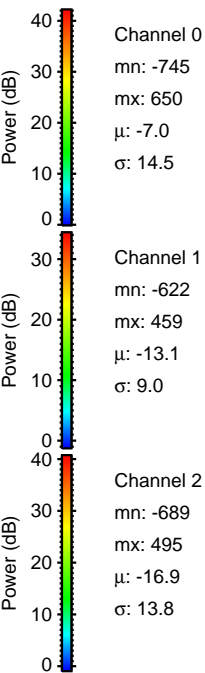
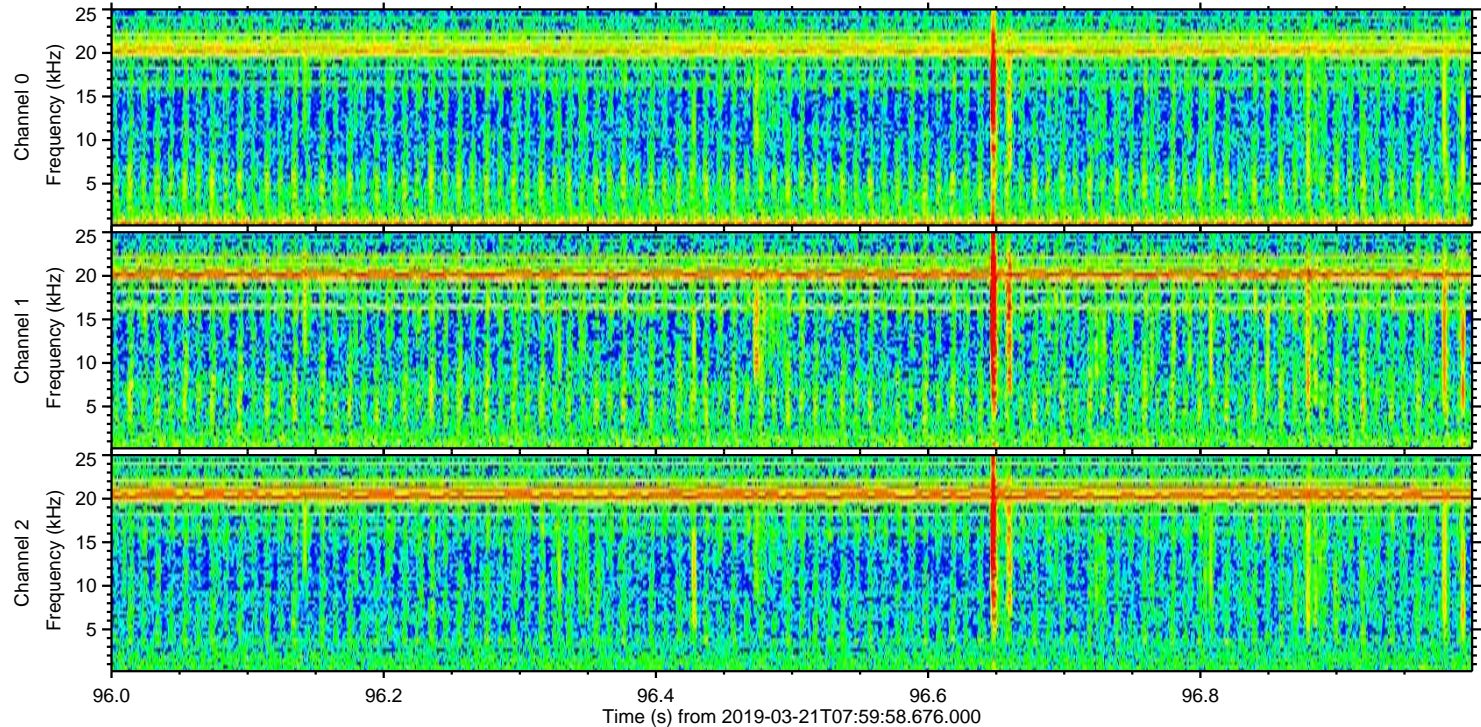
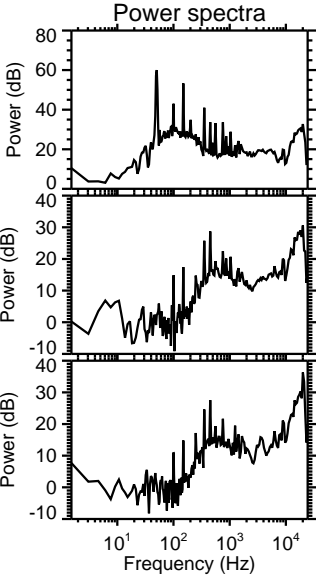
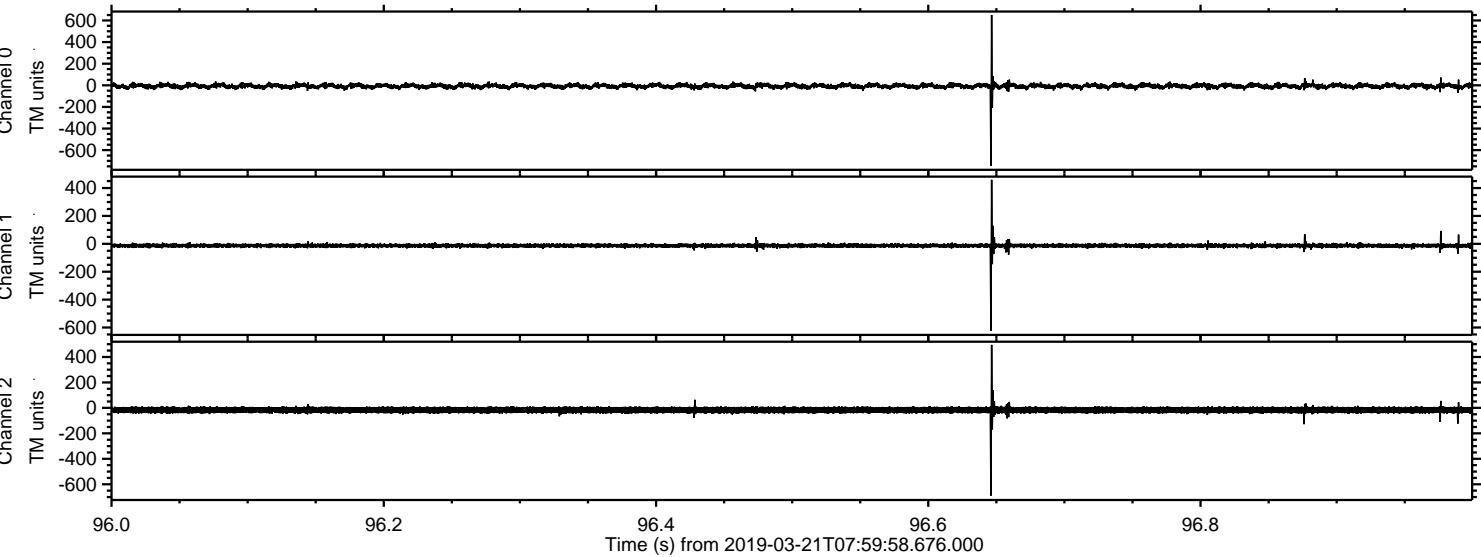


Processed Thu Mar 21 09:08:06 2019 by ELM ver.2012-10-06 from 001\_\_elm20190321\_075957\_\_dat00.bin





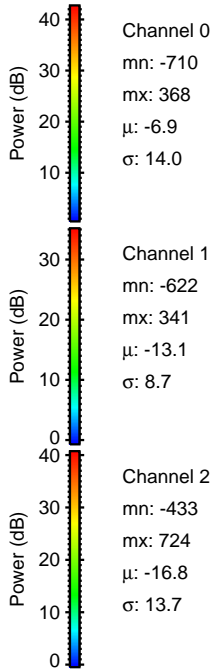
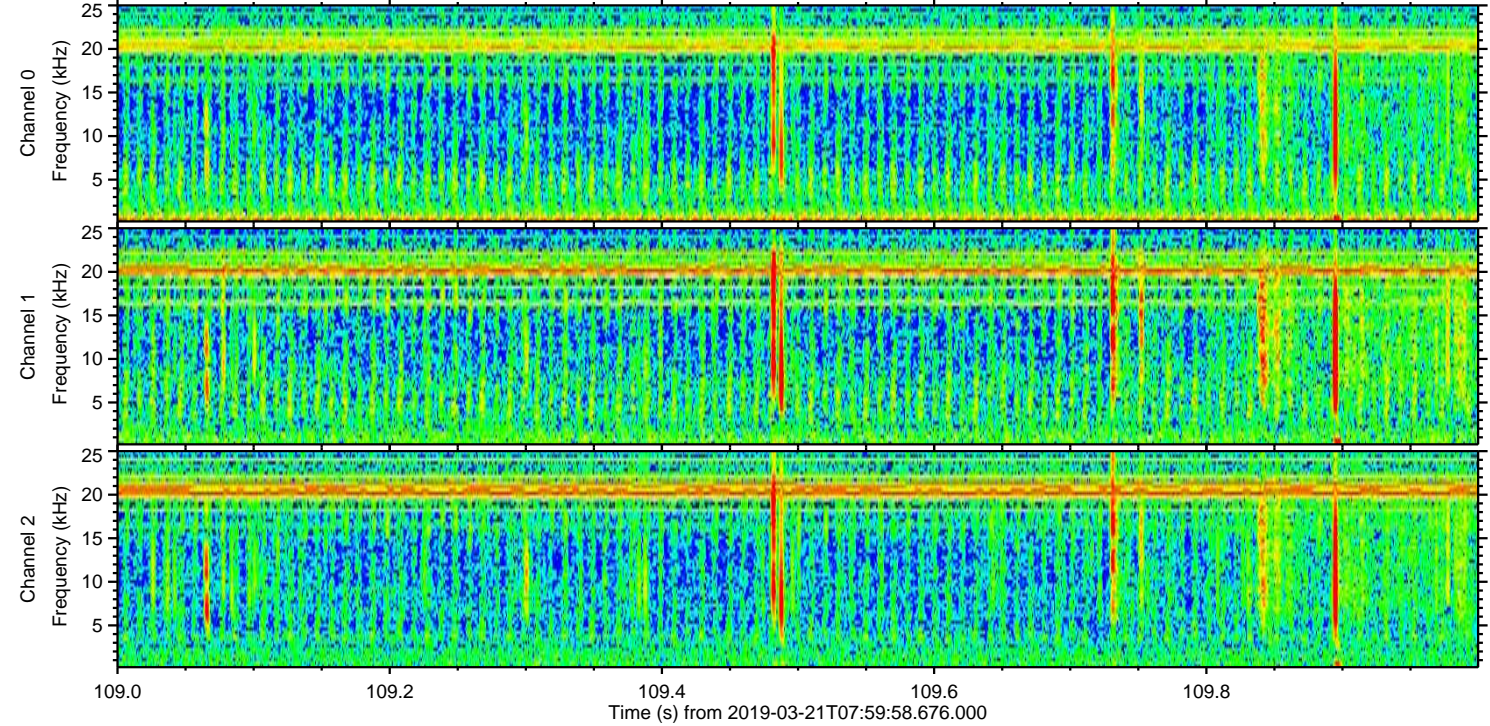
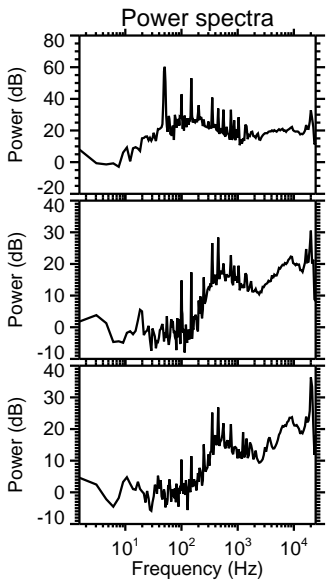
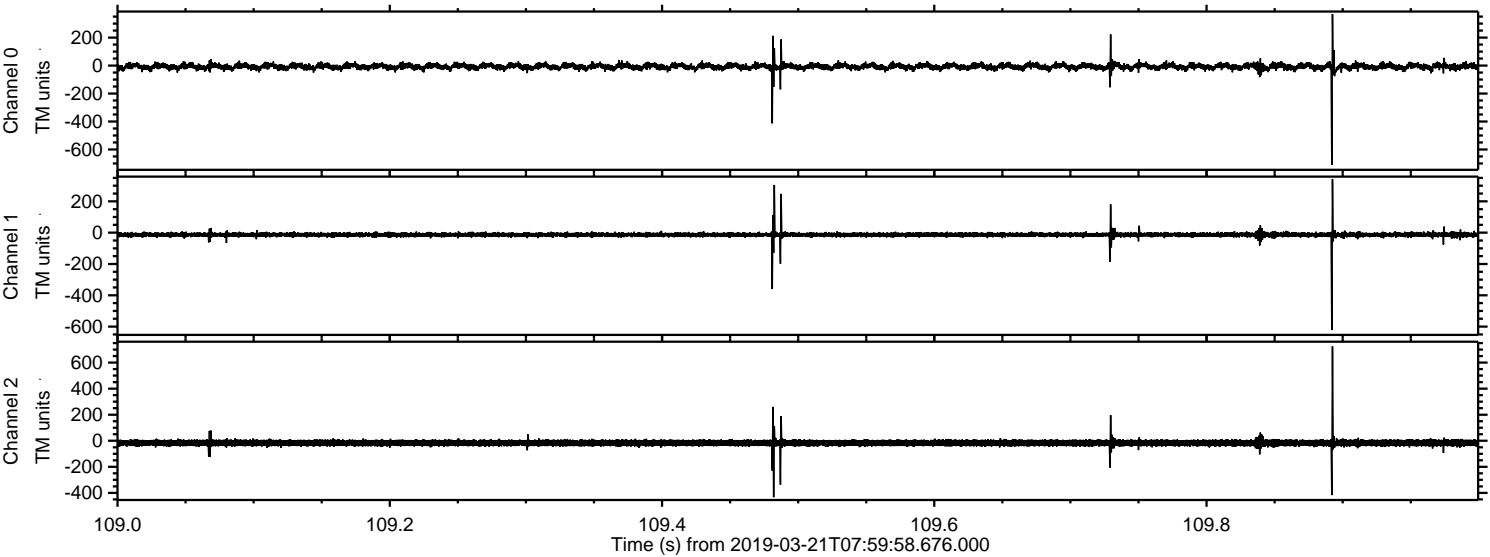
Processed Thu Mar 21 09:08:06 2019 by ELM ver.2012-10-06 from 001\_\_elm20190321\_075957\_\_dat00.bin





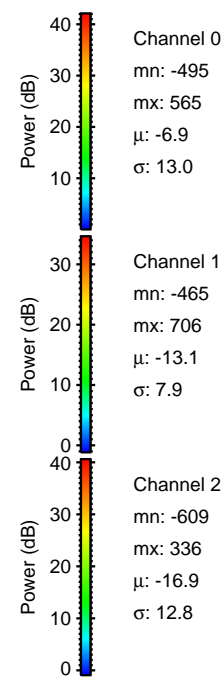
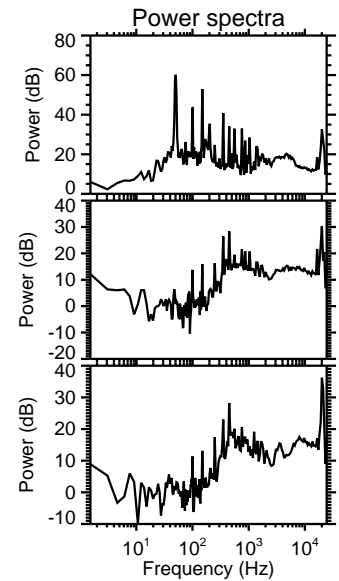
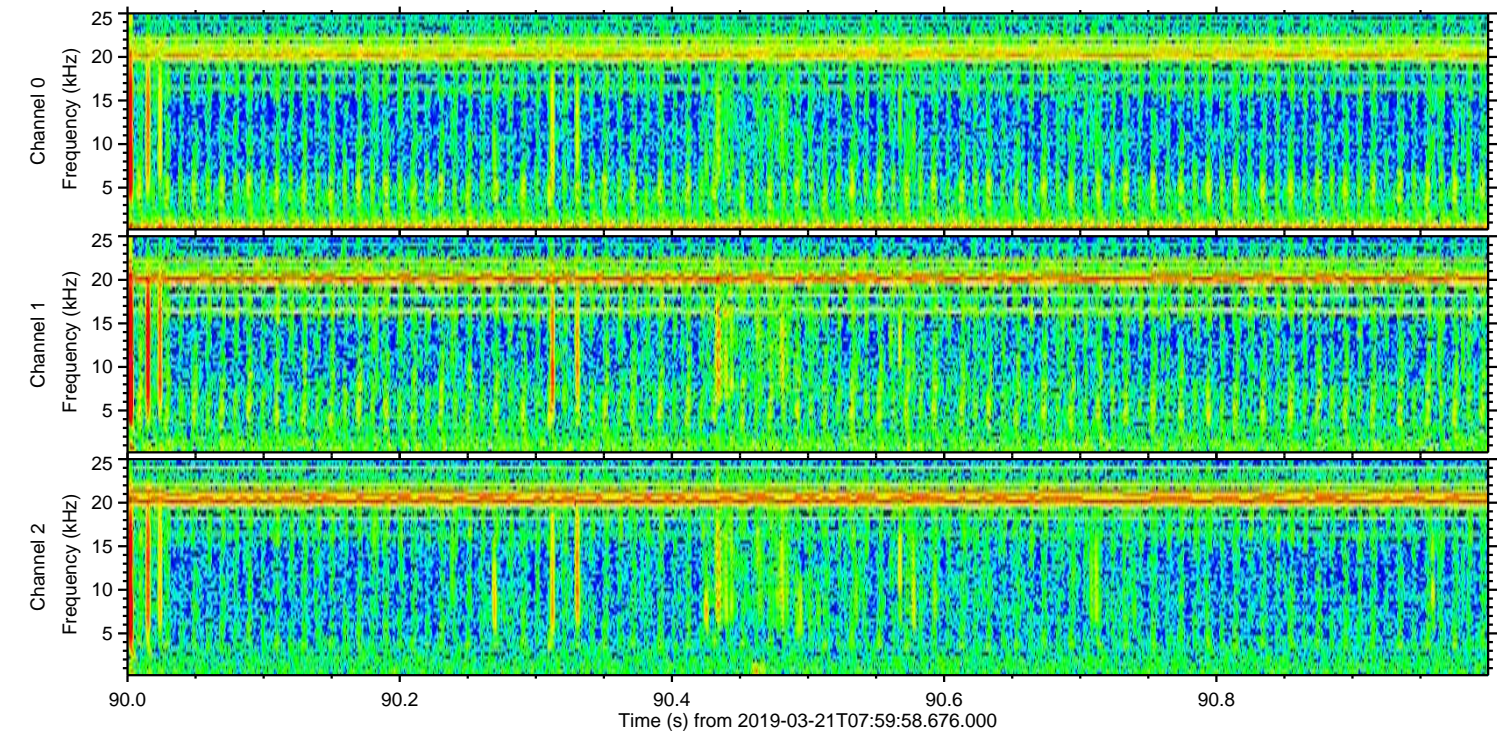
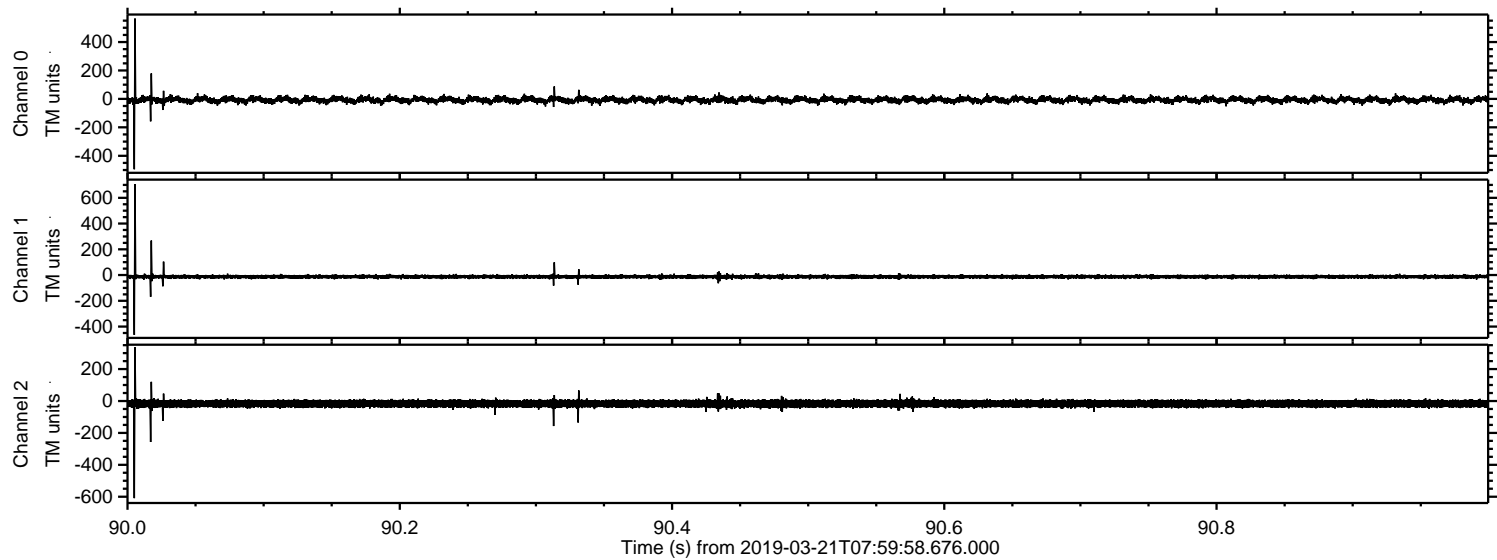
ELMAVAN 3D WAVEFORMS (Measured data sampled at 50 kHz) 51000 packets of 144 samples from 2019-03-21T07:59:58.676.000. Part 110/147

Processed Thu Mar 21 09:08:07 2019 by ELM ver.2012-10-06 from 001\_\_elm20190321\_075957\_\_dat00.bin





Processed Thu Mar 21 09:08:08 2019 by ELM ver.2012-10-06 from 001\_\_elm20190321\_075957\_\_dat00.bin





ELMAVAN 3D WAVEFORMS (Measured data sampled at 50 kHz) 51000 packets of 144 samples from 2019-03-21T07:59:58.676.000. Part 133/147

