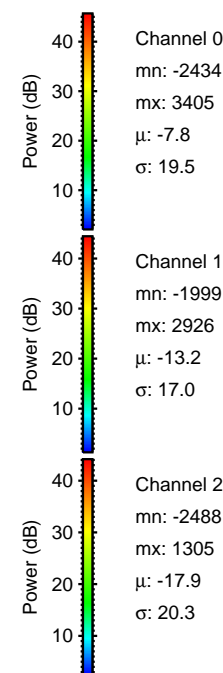
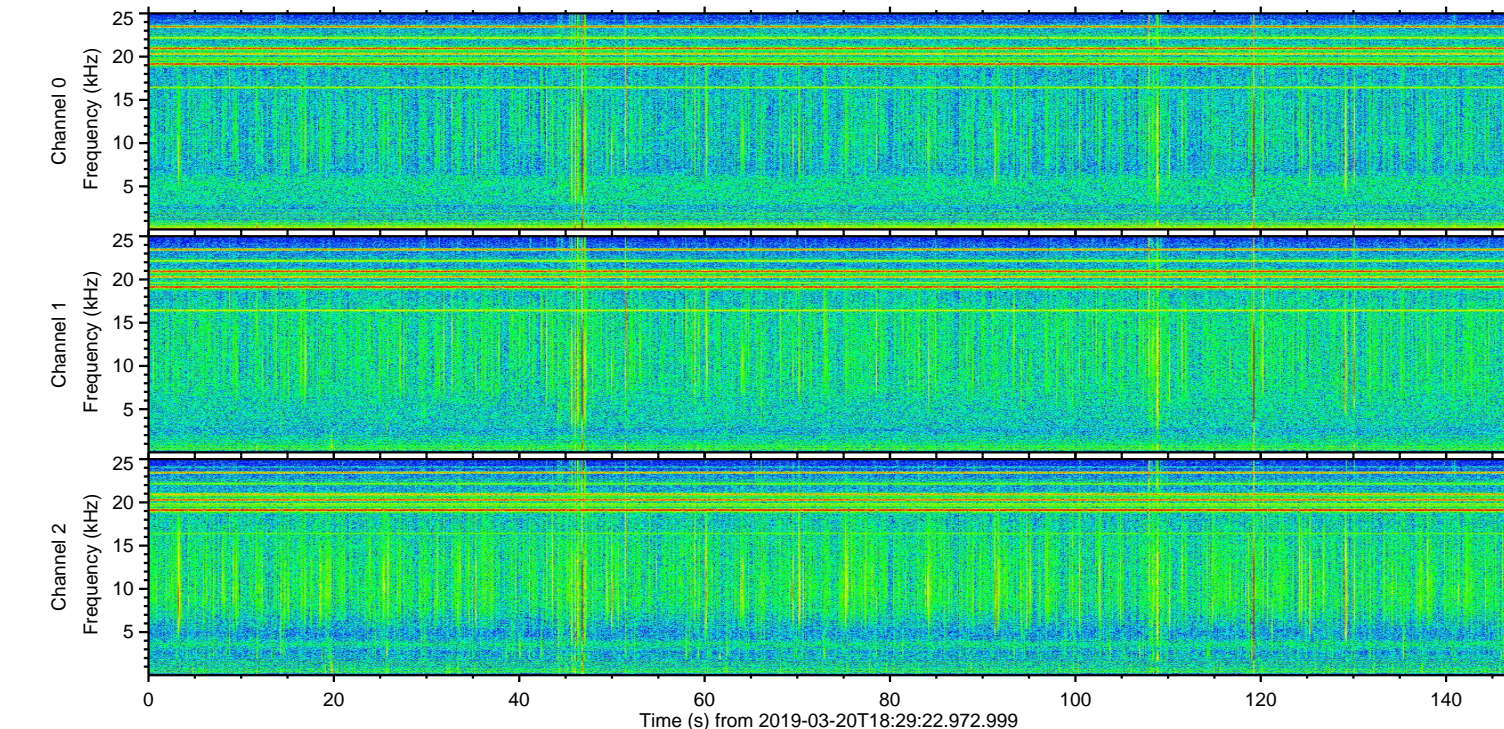
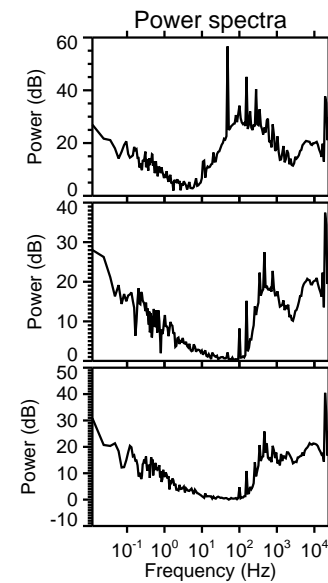
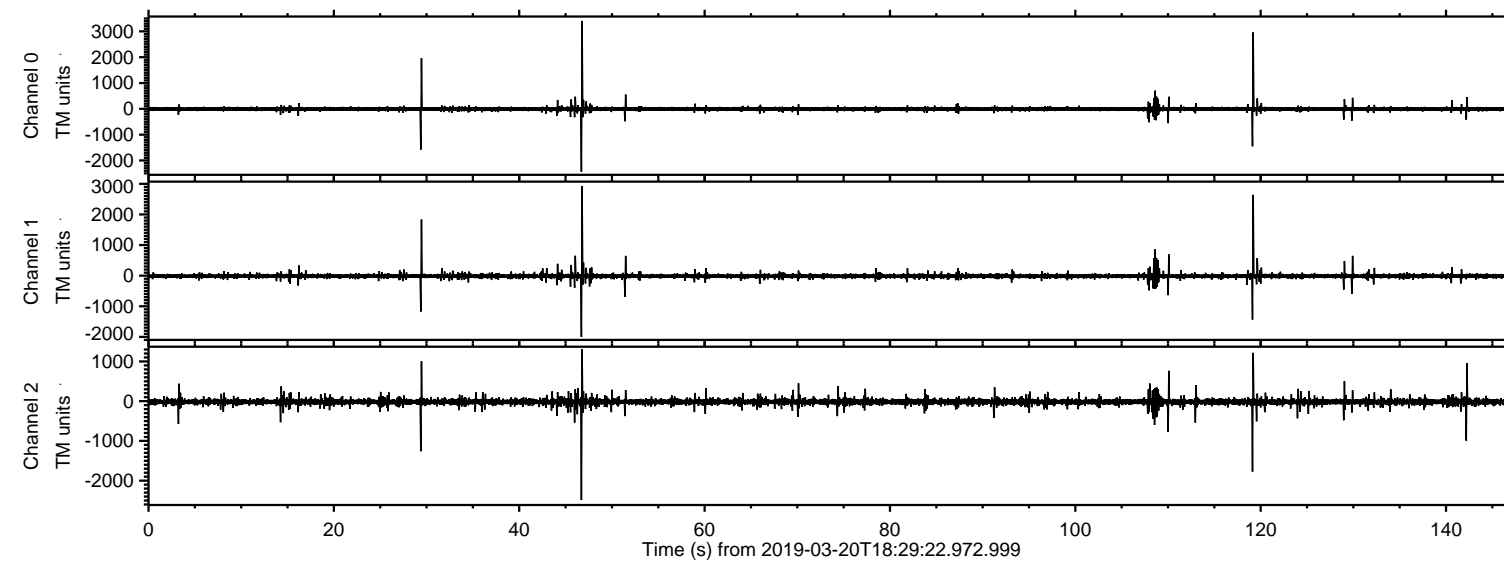
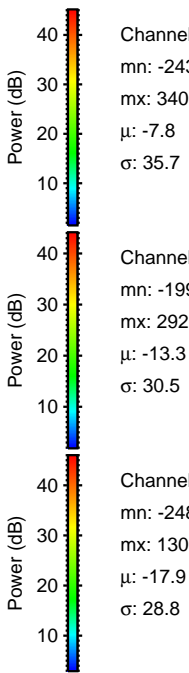
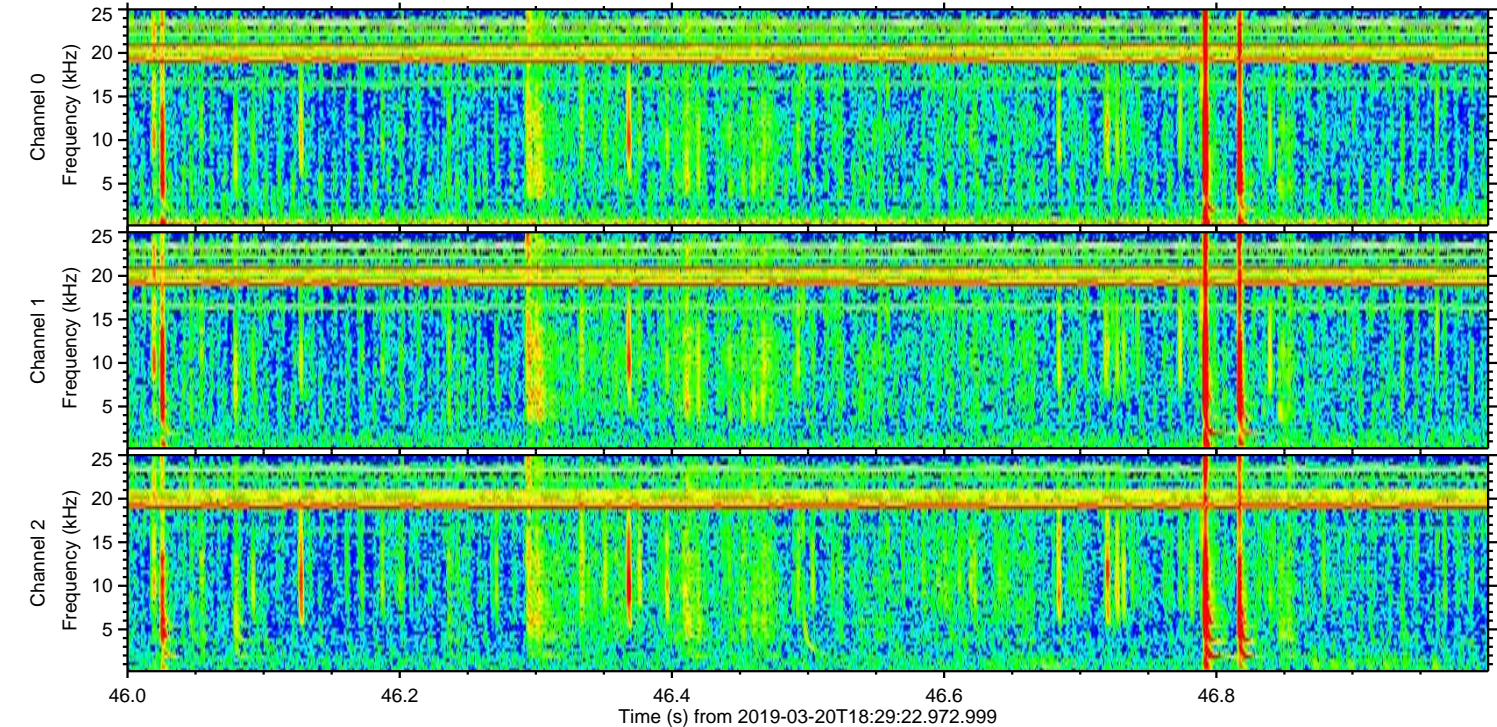
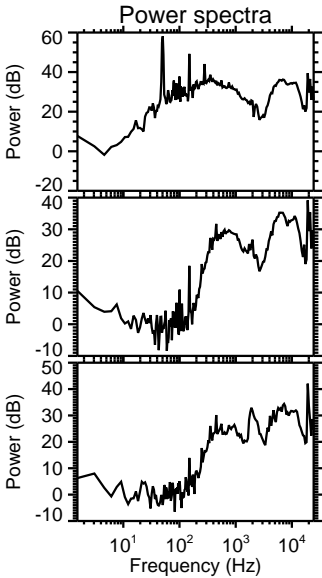
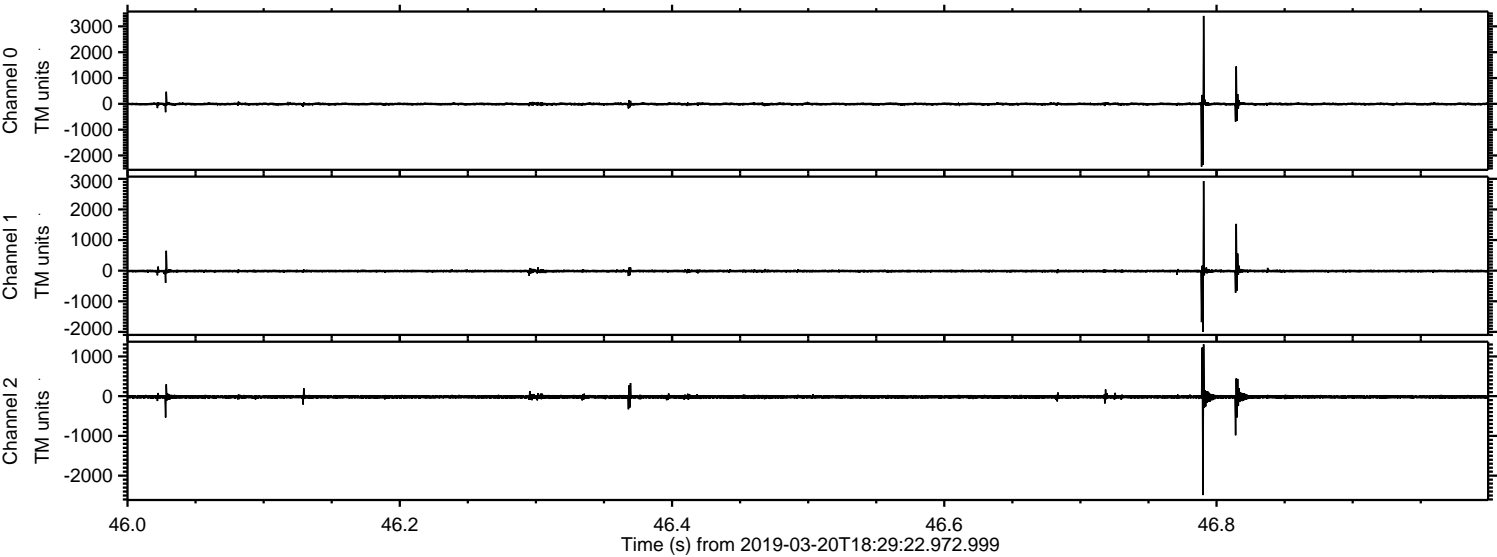


ELMAVAN 3D WAVEFORMS (Measured data sampled at 50 kHz) 51000 packets of 144 samples from 2019-03-20T18:29:22.972.999.

Processed Wed Mar 20 19:37:10 2019 by ELM ver.2012-10-06 from 001__elm20190320_182921__dat00.bin

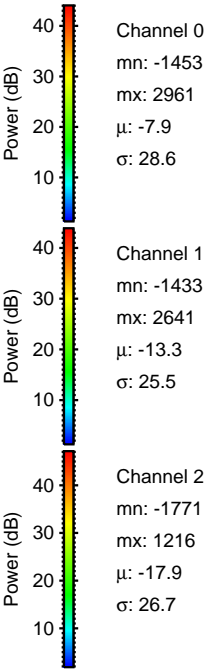
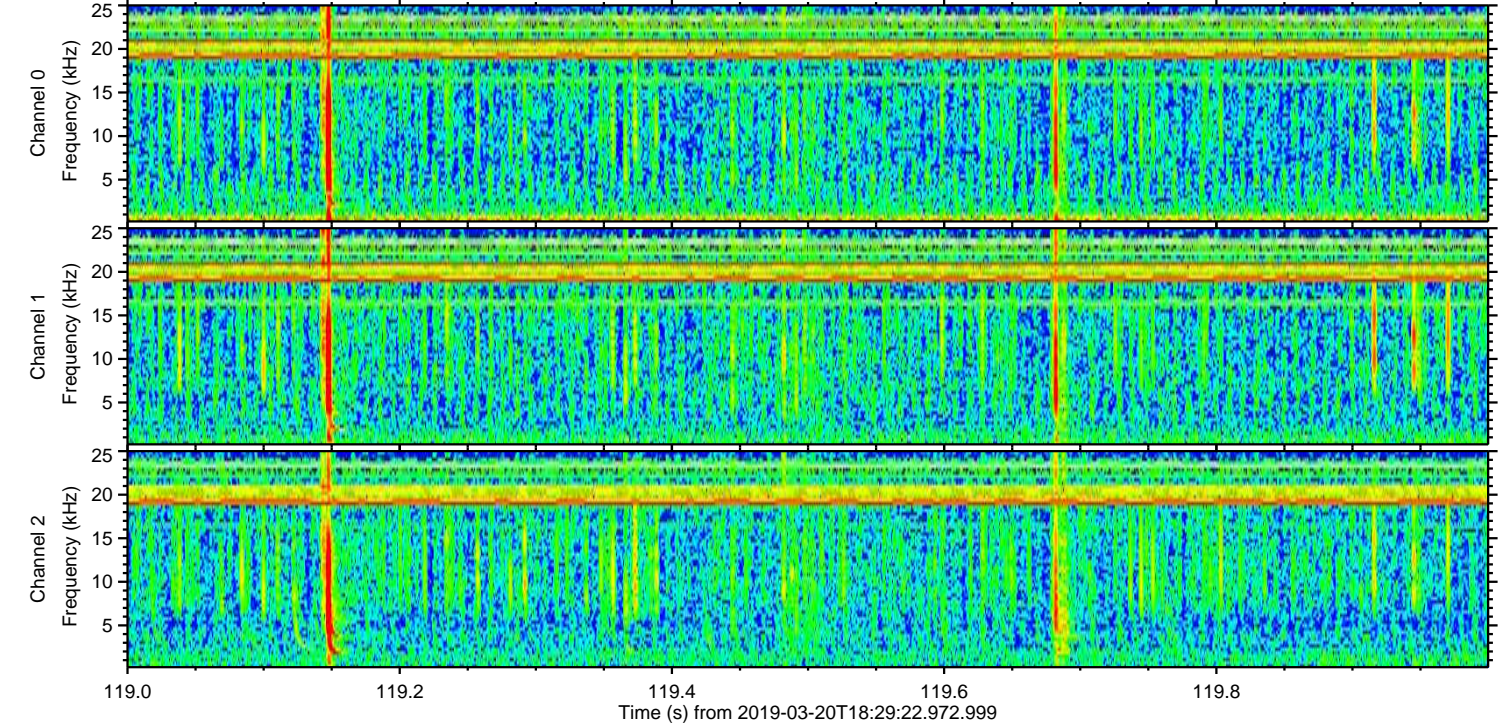
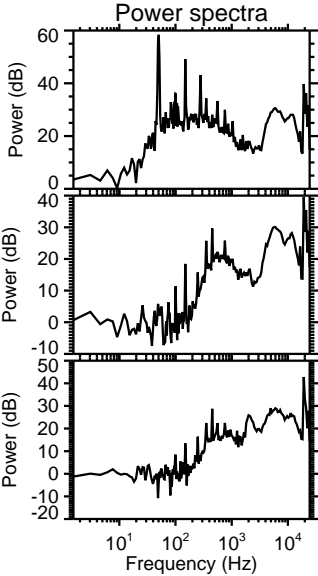
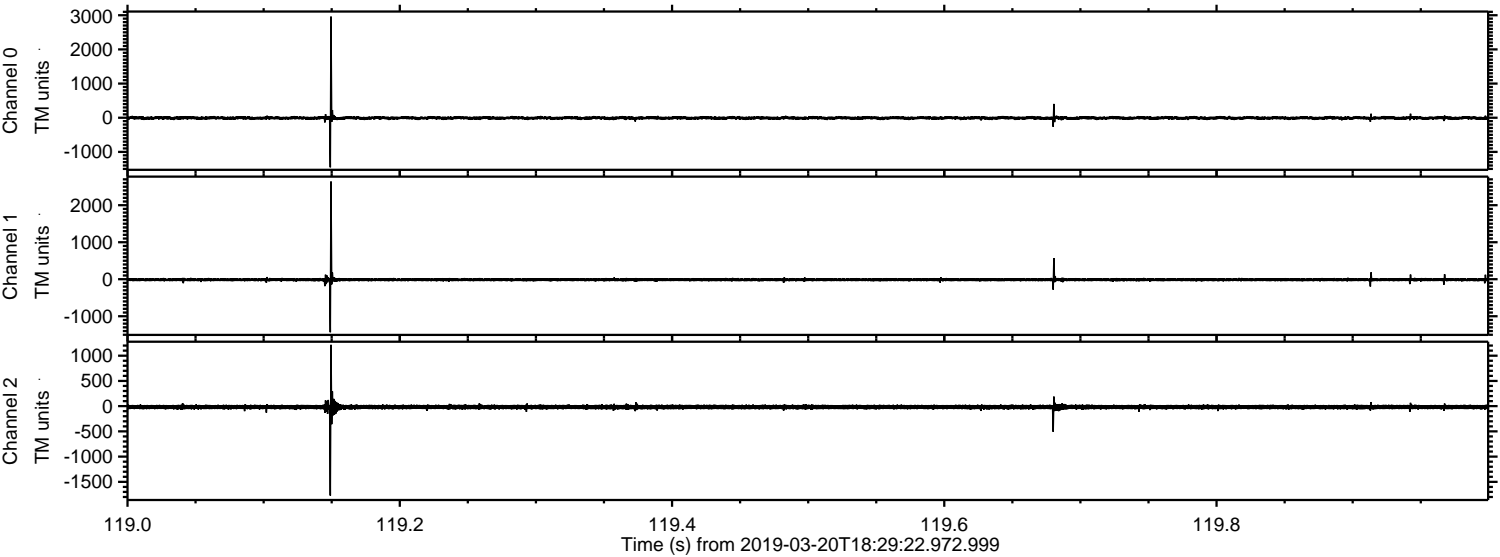


Processed Wed Mar 20 19:37:16 2019 by ELM ver.2012-10-06 from 001__elm20190320_182921__dat00.bin

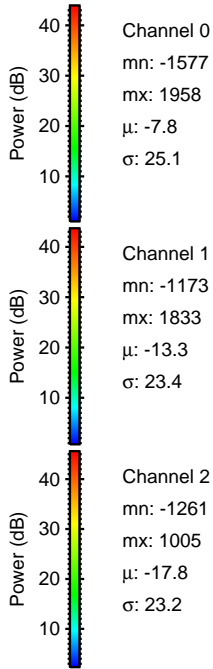
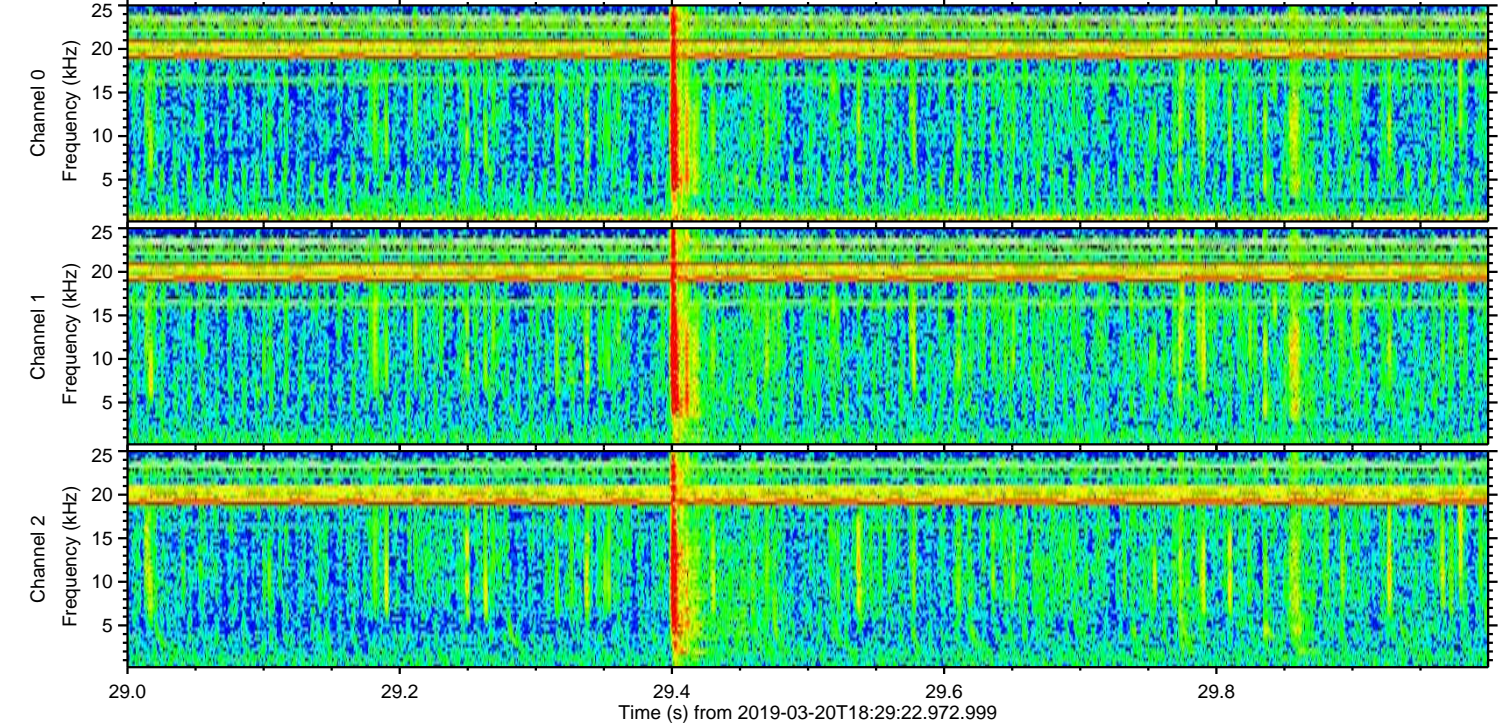
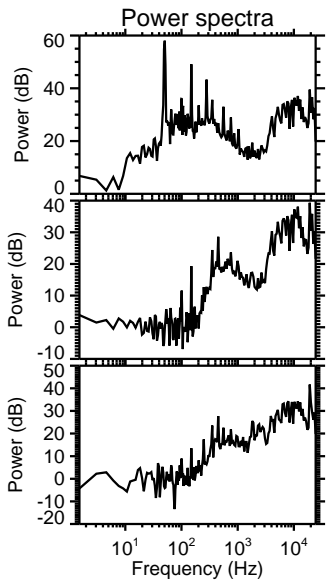
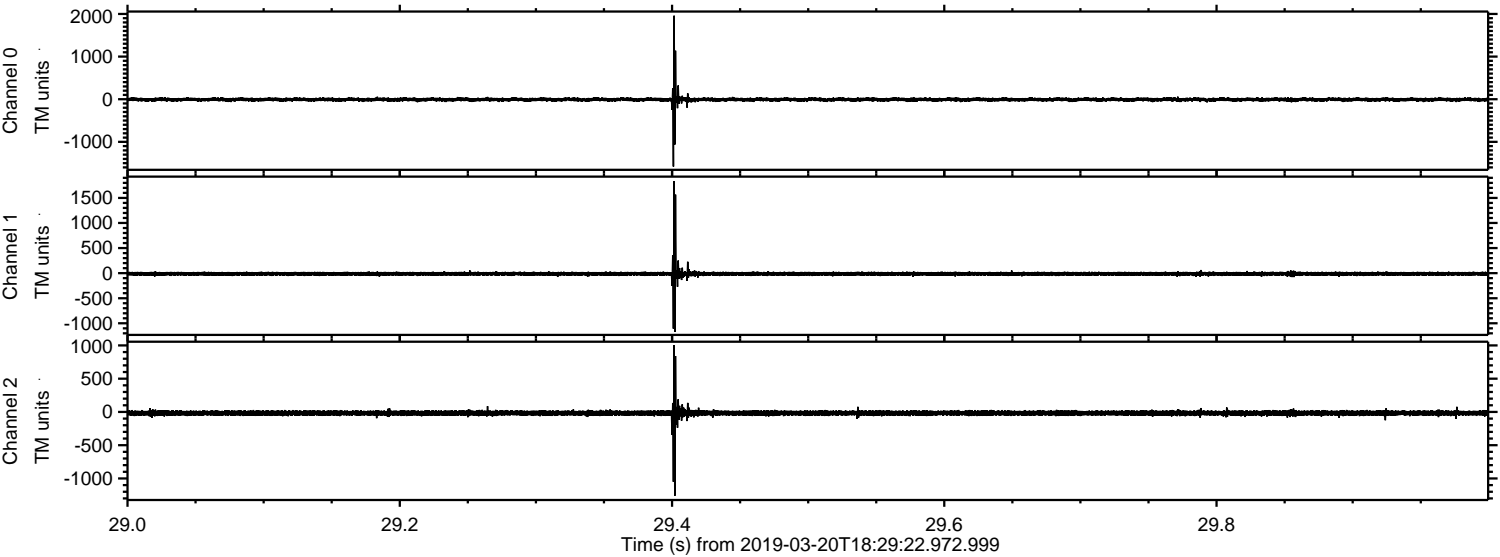


ELMAVAN 3D WAVEFORMS (Measured data sampled at 50 kHz) 51000 packets of 144 samples from 2019-03-20T18:29:22.972.999. Part 120/147

Processed Wed Mar 20 19:37:17 2019 by ELM ver.2012-10-06 from 001__elm20190320_182921__dat00.bin



Processed Wed Mar 20 19:37:17 2019 by ELM ver.2012-10-06 from 001__elm20190320_182921__dat00.bin

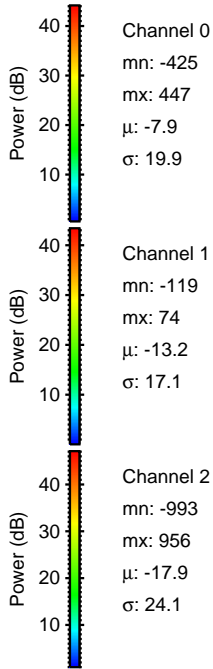
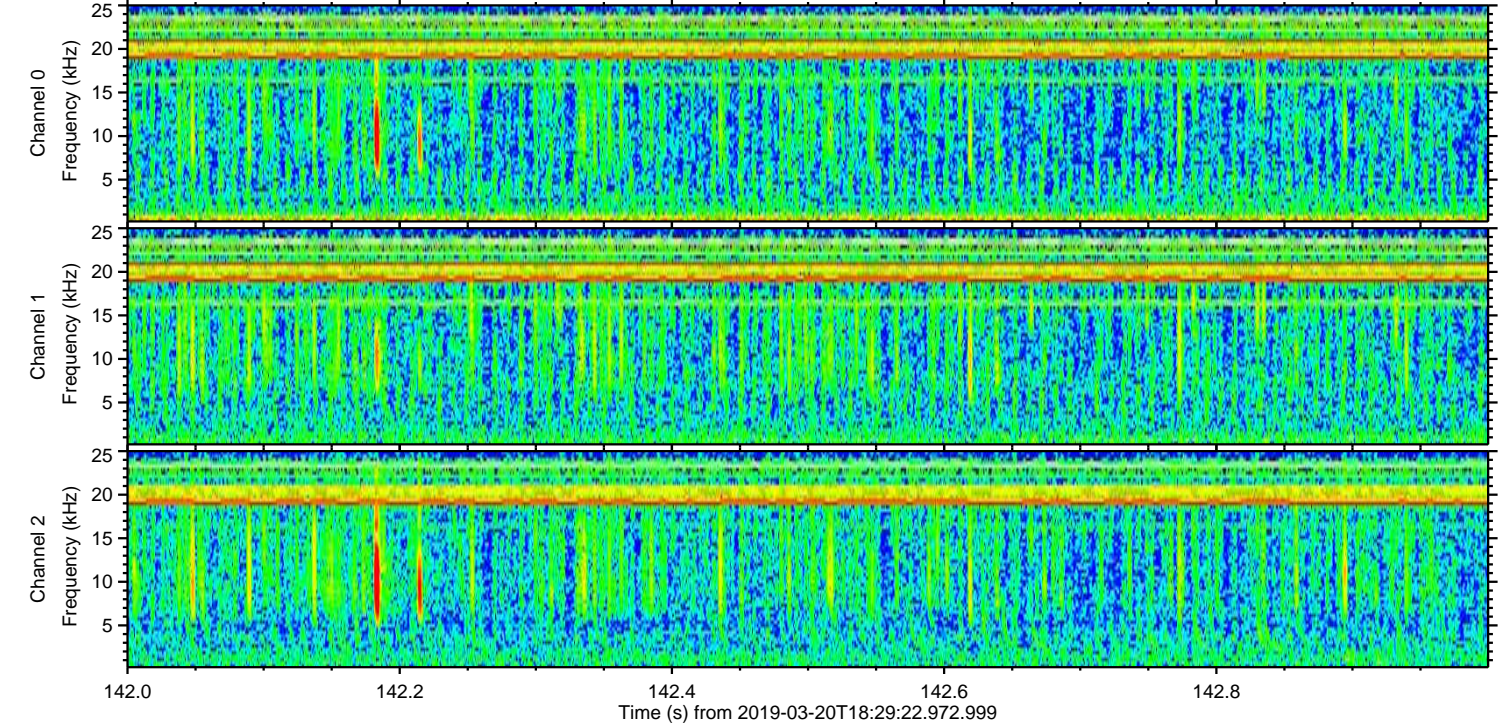
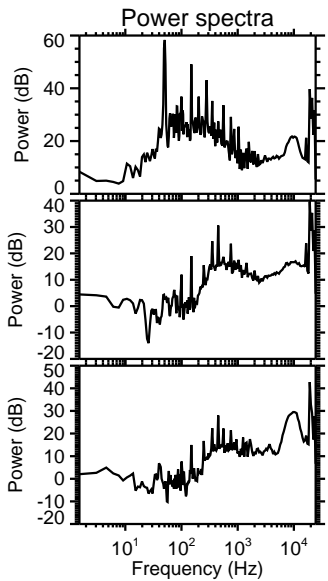
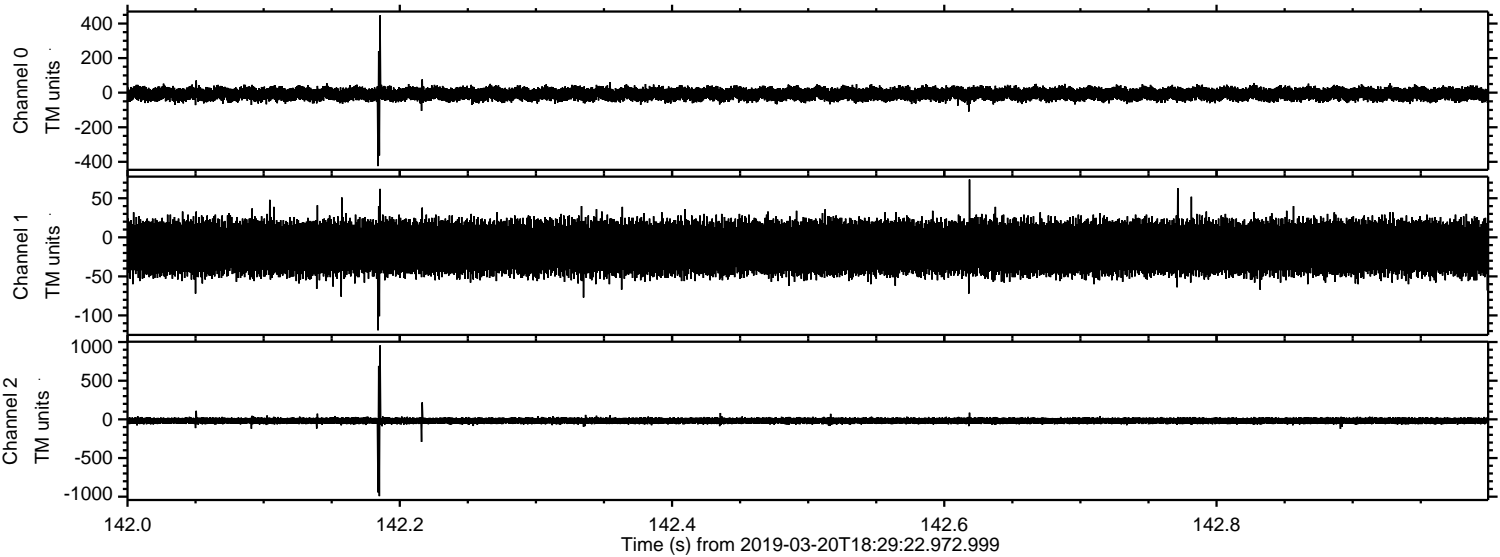


Channel 0
mn: -1577
mx: 1958
 μ : -7.8
 σ : 25.1

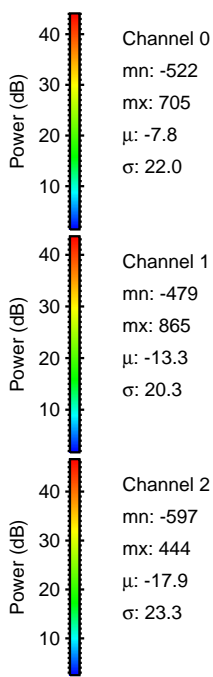
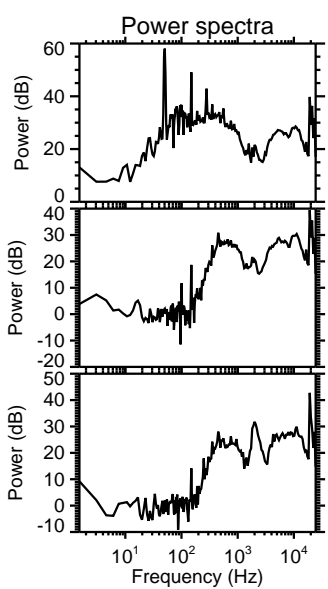
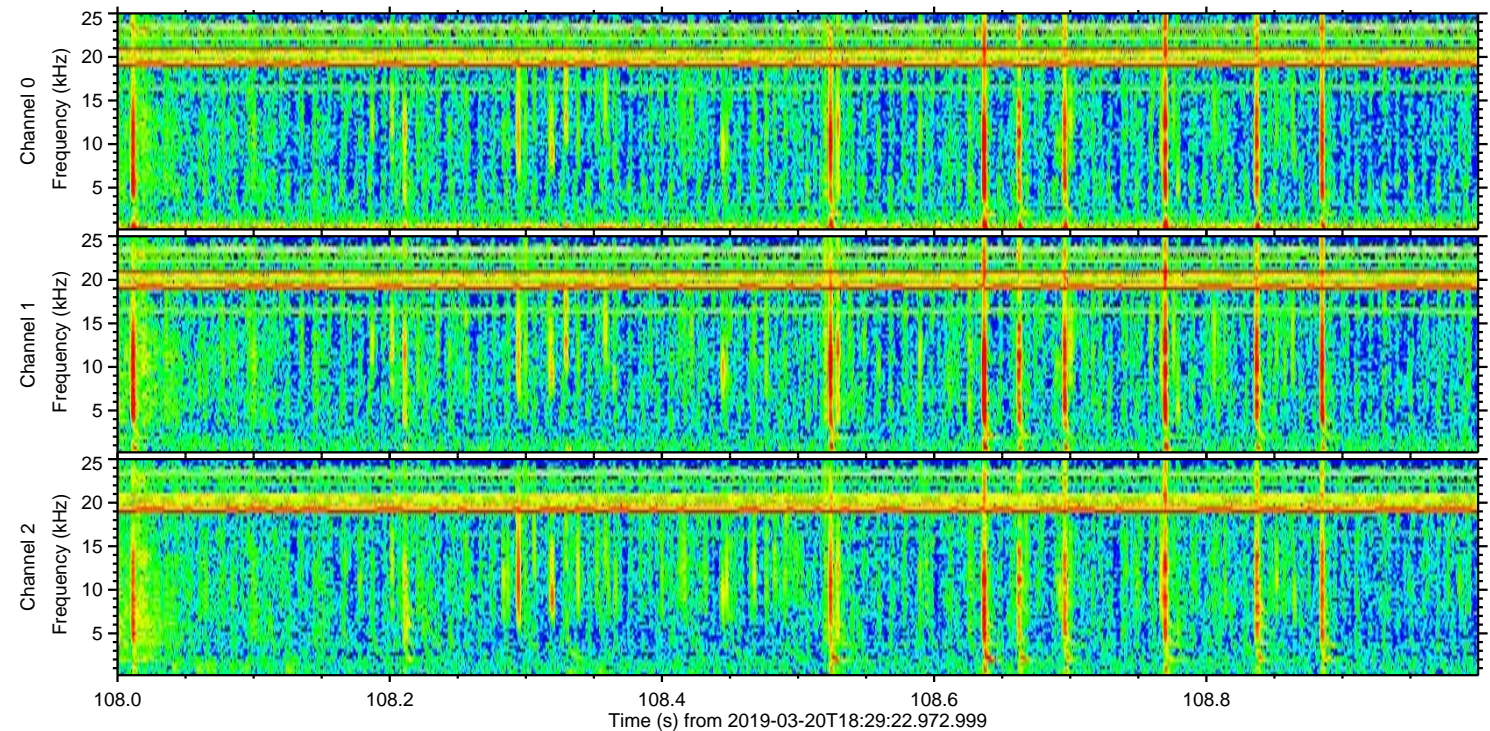
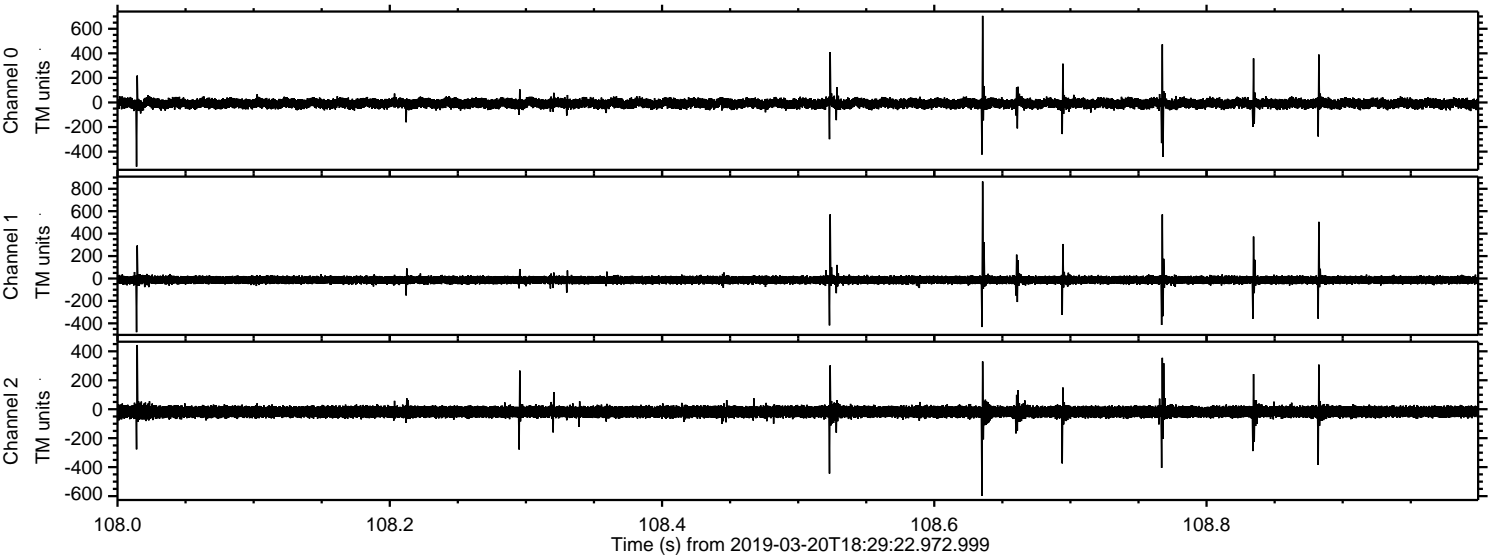
Channel 1
mn: -1173
mx: 1833
 μ : -13.3
 σ : 23.4

Channel 2
mn: -1261
mx: 1005
 μ : -17.8
 σ : 23.2

Processed Wed Mar 20 19:37:18 2019 by ELM ver.2012-10-06 from 001__elm20190320_182921__dat00.bin

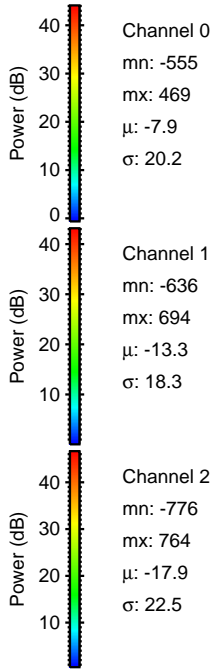
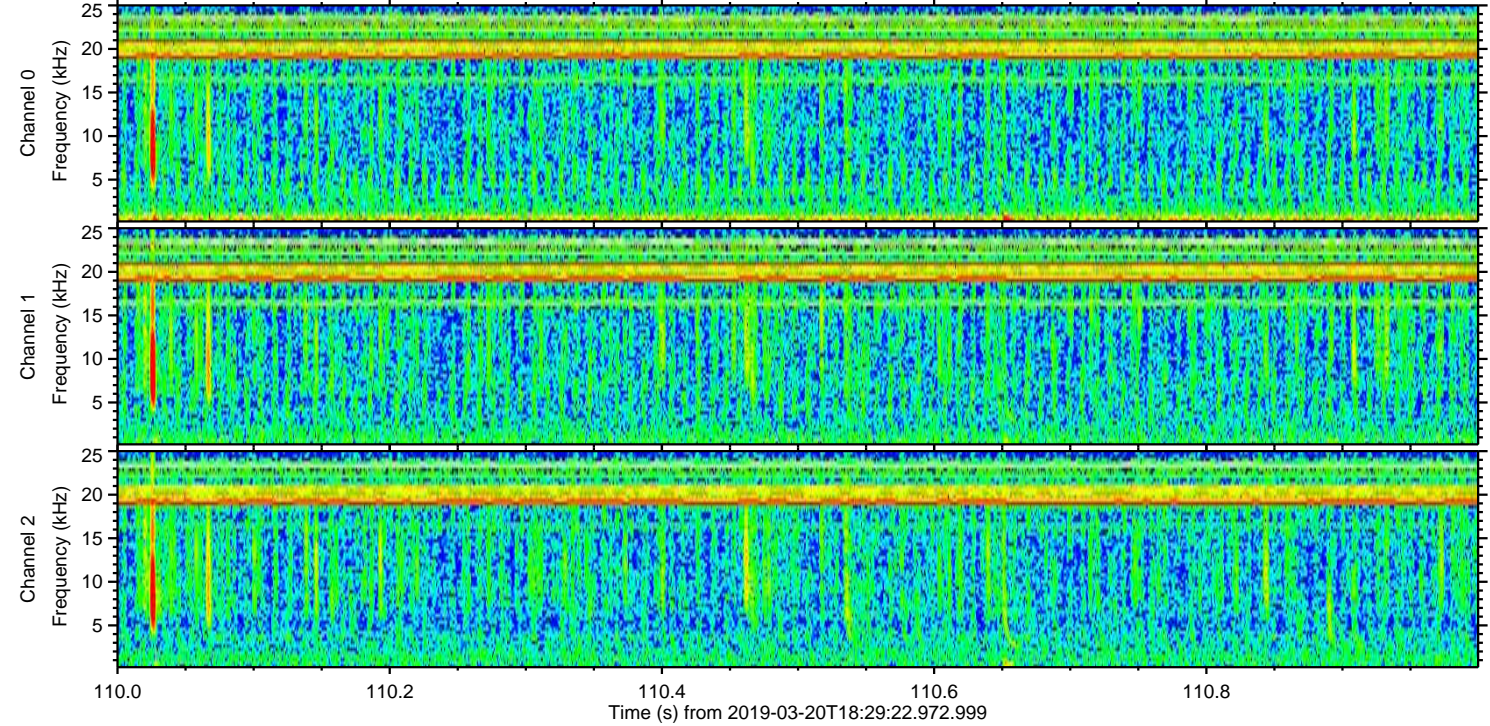
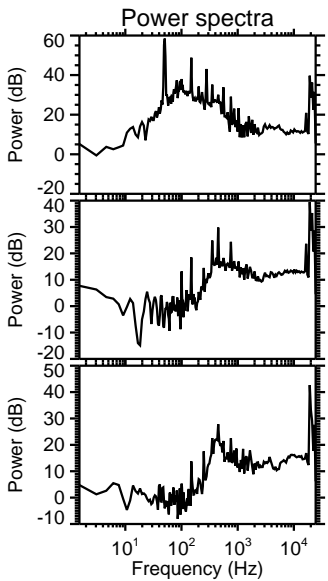
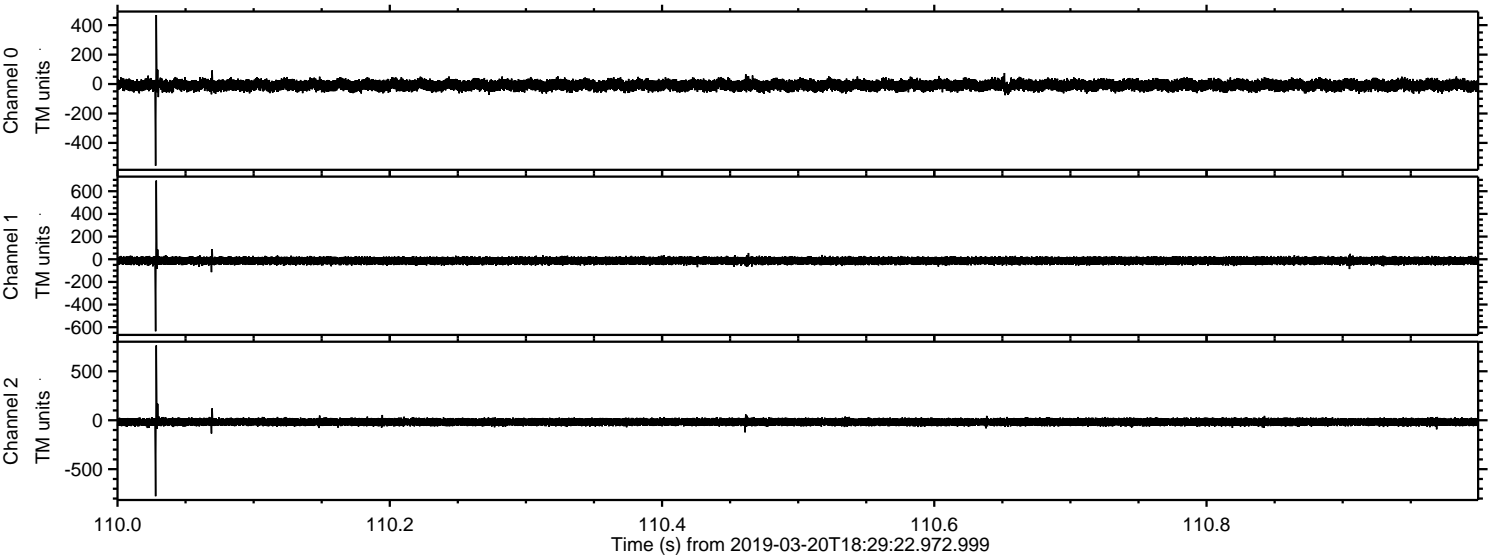


Processed Wed Mar 20 19:37:18 2019 by ELM ver.2012-10-06 from 001__elm20190320_182921__dat00.bin

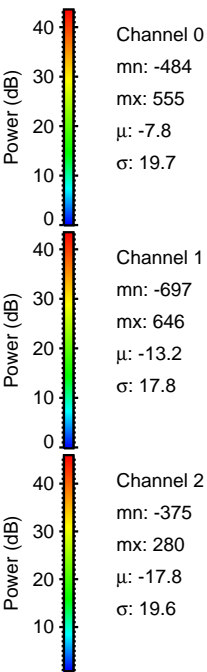
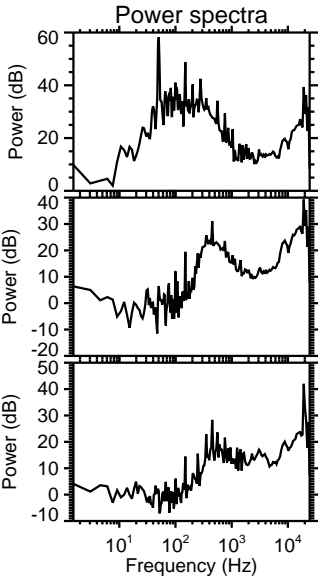
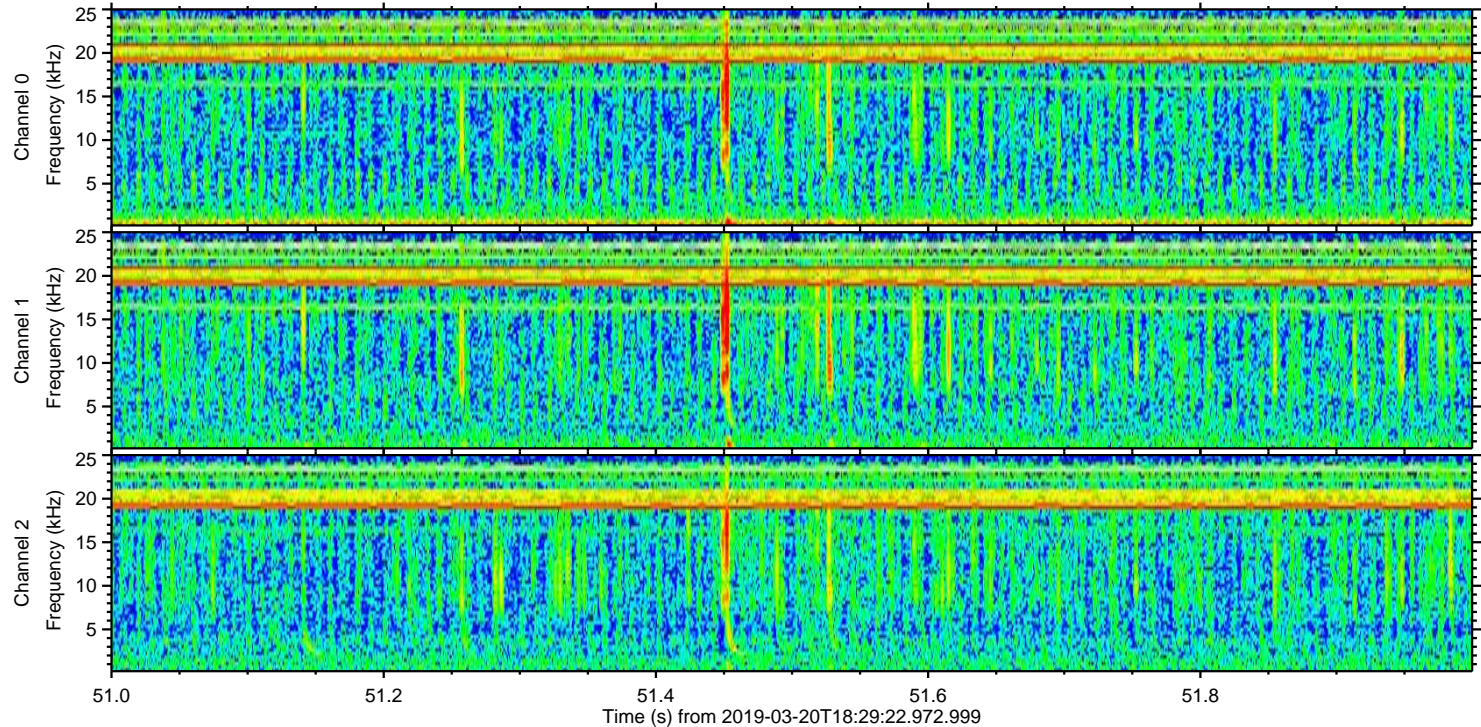
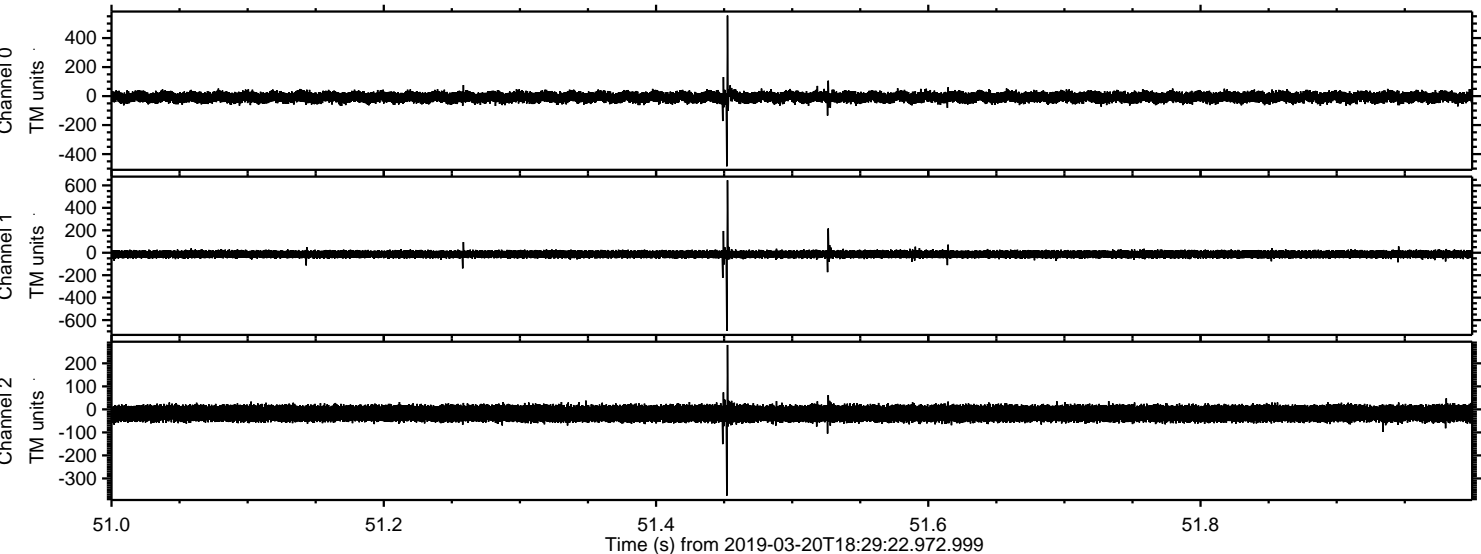


ELMAVAN 3D WAVEFORMS (Measured data sampled at 50 kHz) 51000 packets of 144 samples from 2019-03-20T18:29:22.972.999. Part 111/147

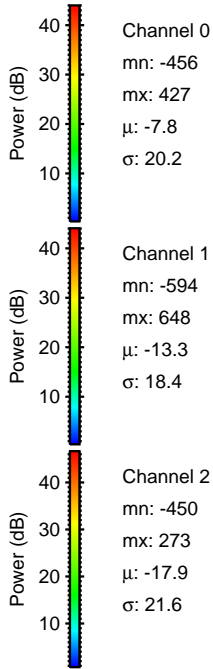
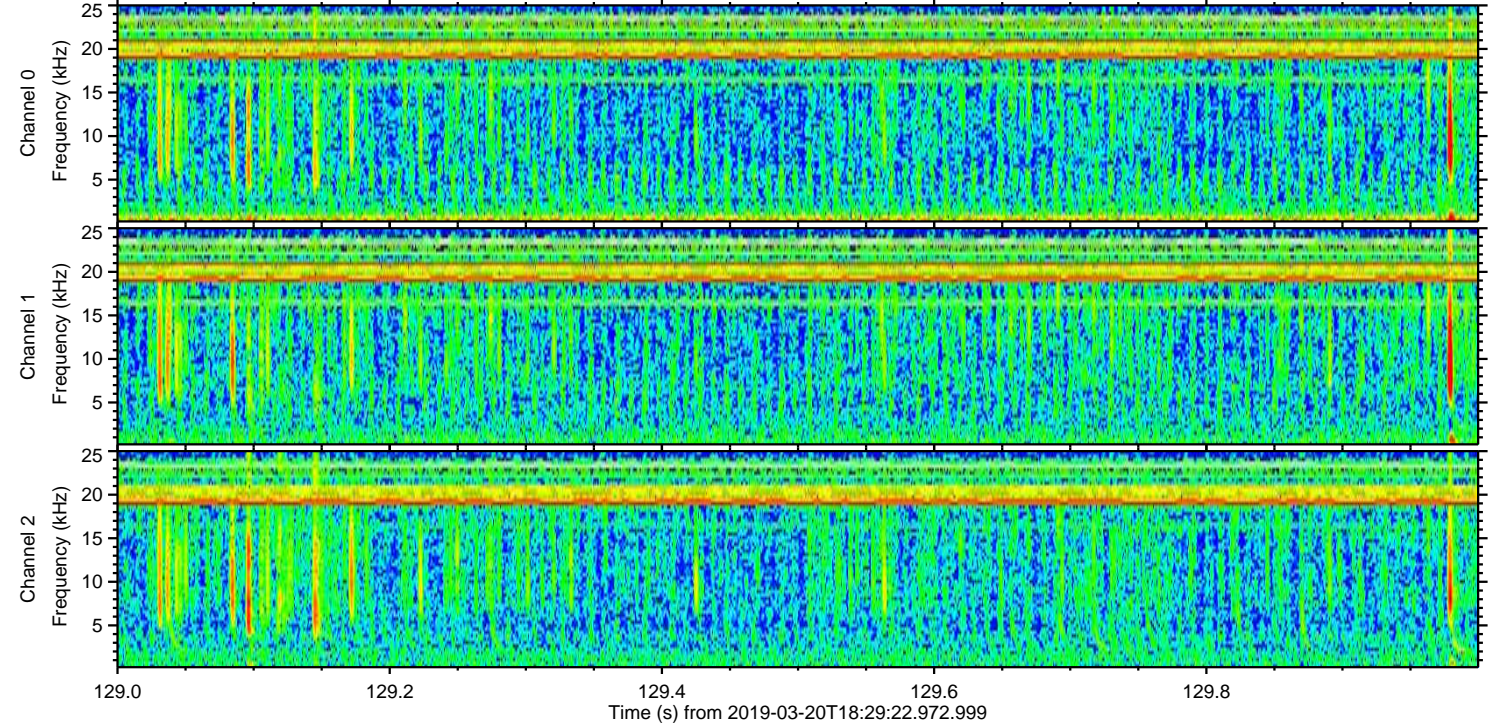
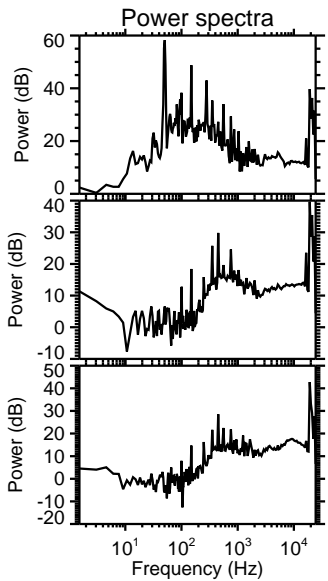
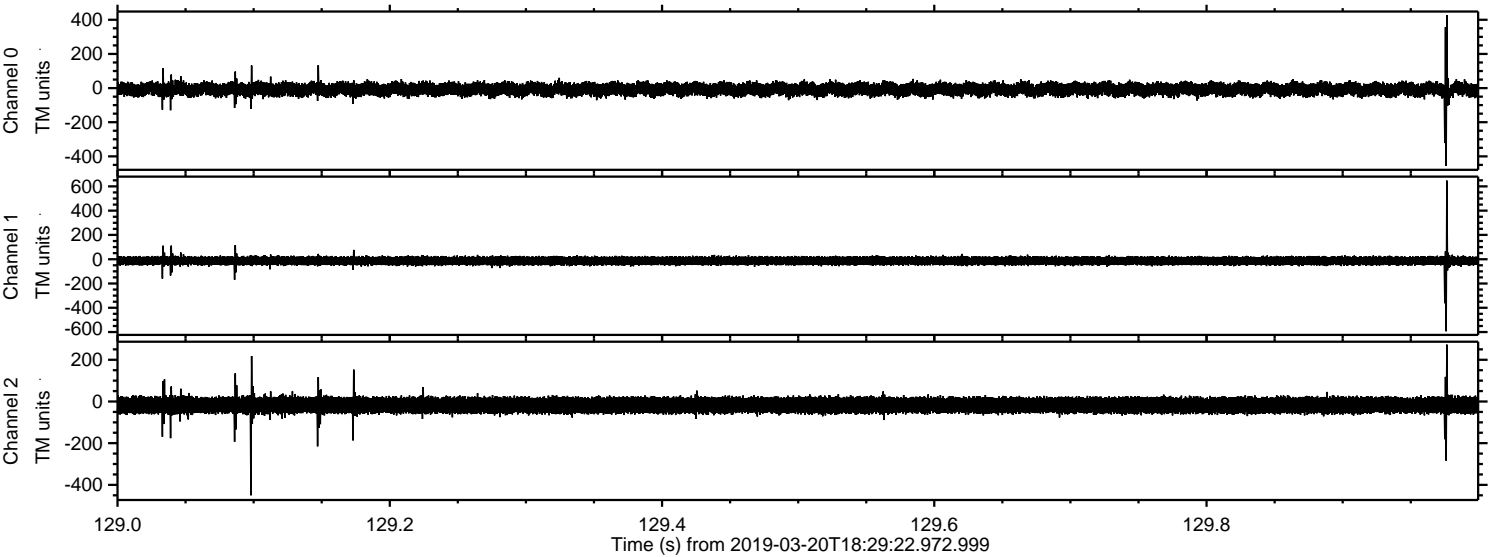
Processed Wed Mar 20 19:37:19 2019 by ELM ver.2012-10-06 from 001__elm20190320_182921__dat00.bin



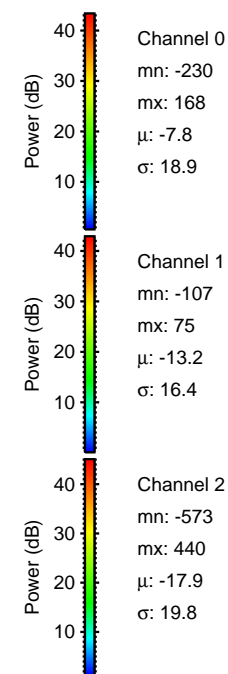
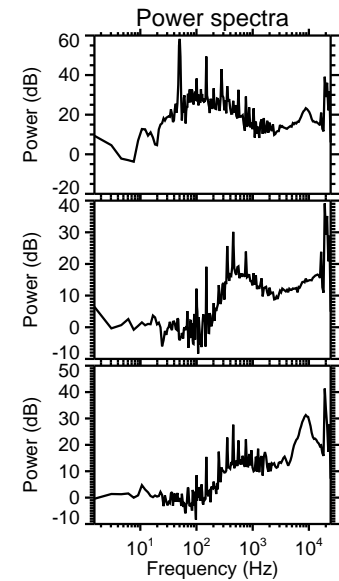
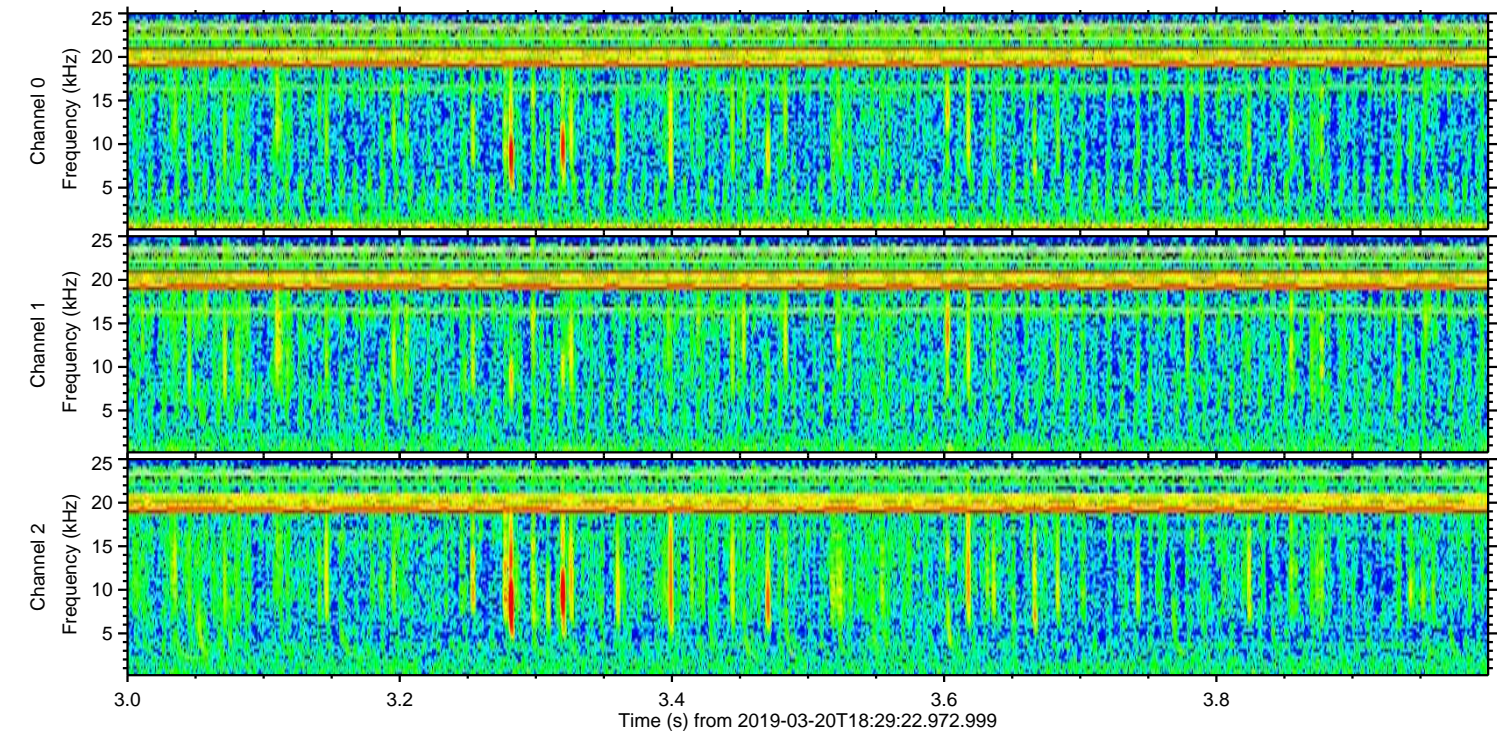
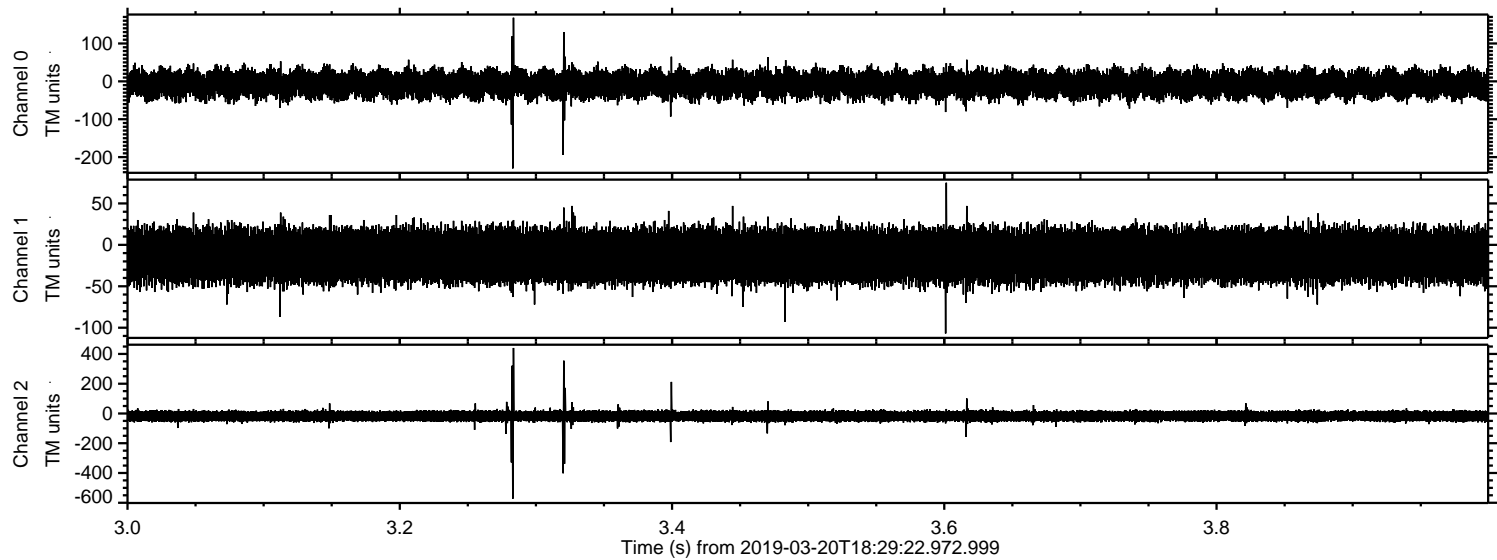
Processed Wed Mar 20 19:37:20 2019 by ELM ver.2012-10-06 from 001__elm20190320_182921__dat00.bin



Processed Wed Mar 20 19:37:21 2019 by ELM ver.2012-10-06 from 001__elm20190320_182921__dat00.bin



Processed Wed Mar 20 19:37:21 2019 by ELM ver.2012-10-06 from 001__elm20190320_182921__dat00.bin



Processed Wed Mar 20 19:37:22 2019 by ELM ver.2012-10-06 from 001__elm20190320_182921__dat00.bin

