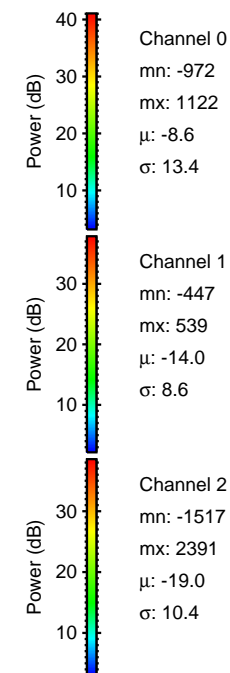
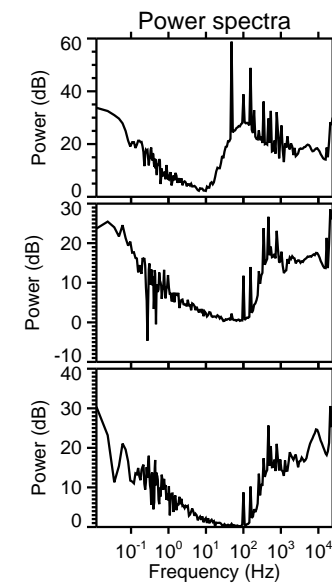
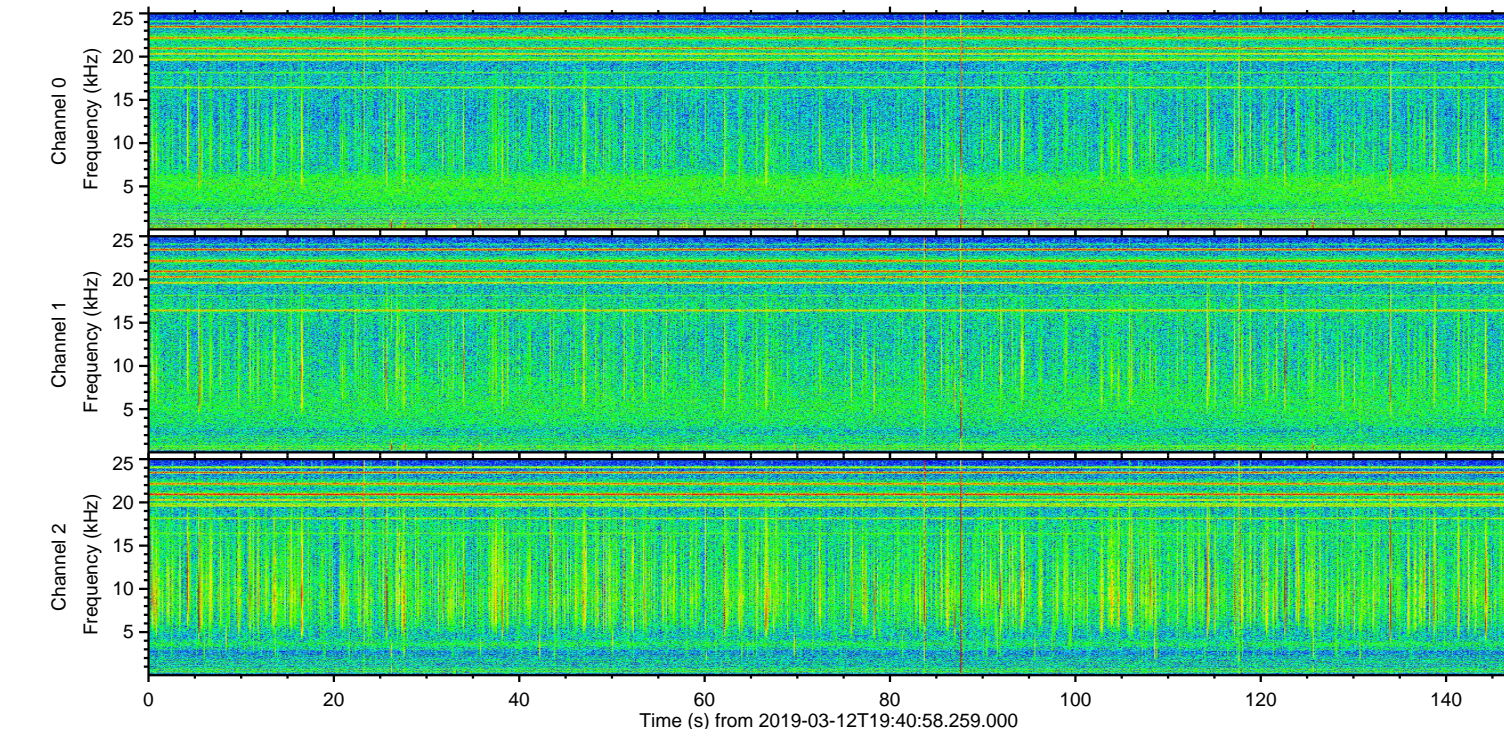
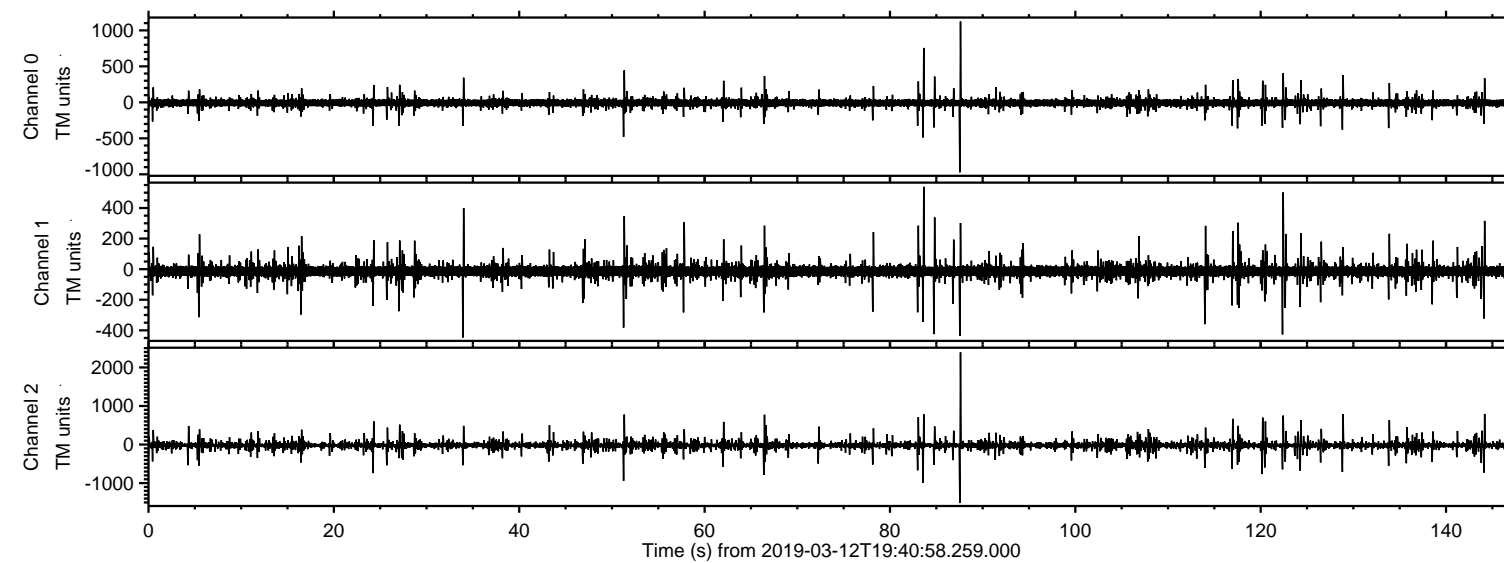
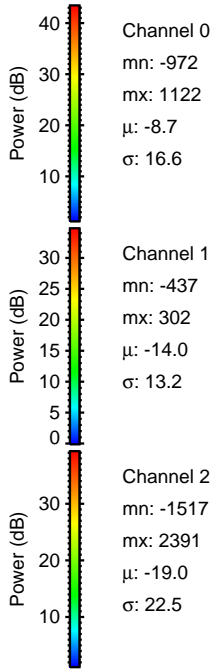
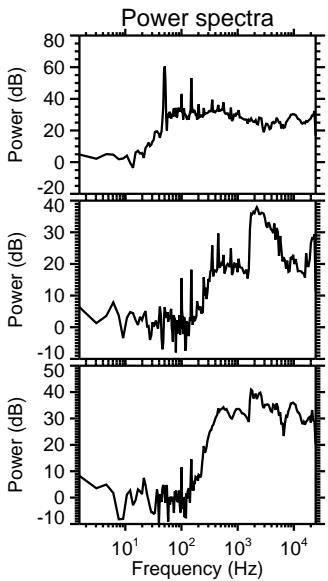
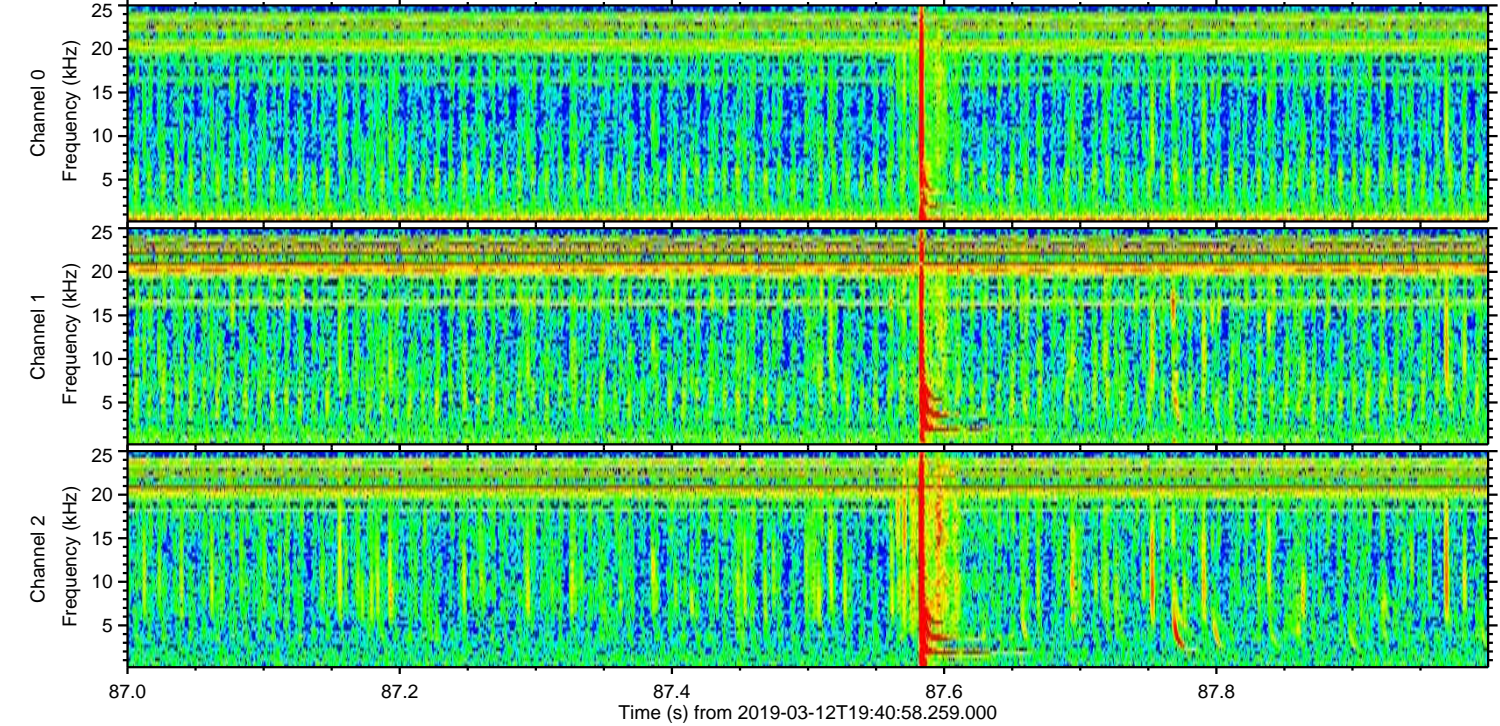
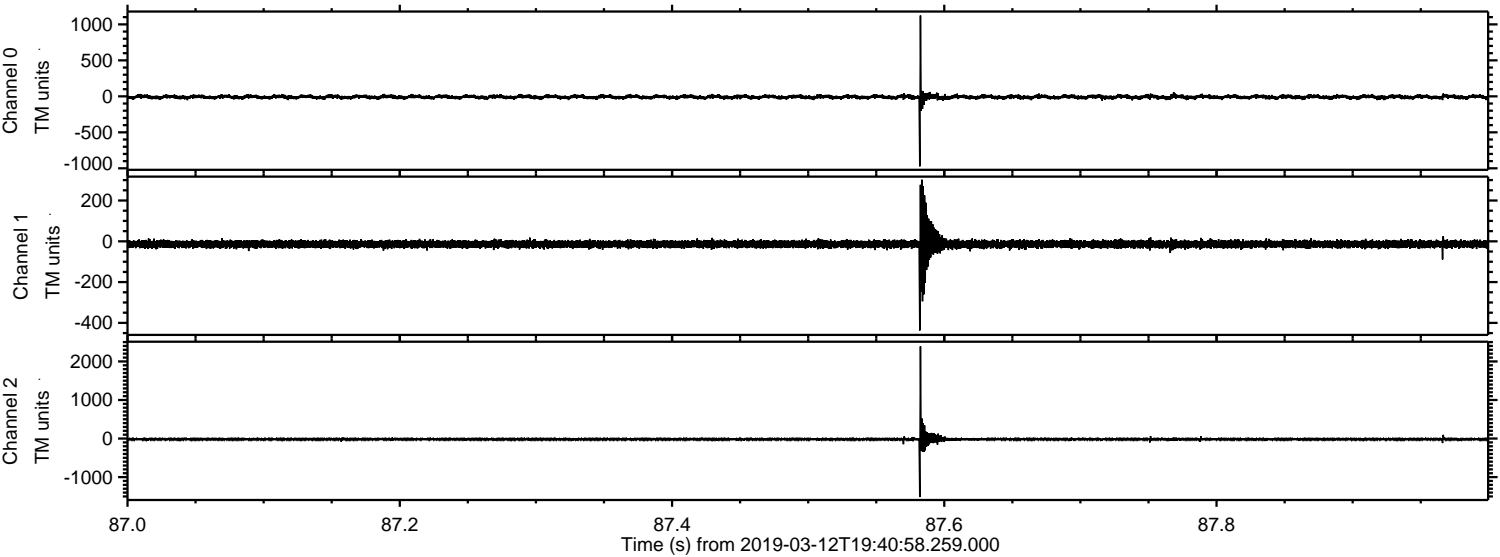


ELMAVAN 3D WAVEFORMS (Measured data sampled at 50 kHz) 51000 packets of 144 samples from 2019-03-12T19:40:58.259.000.

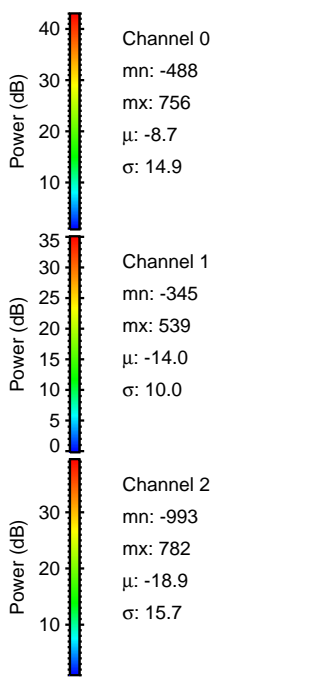
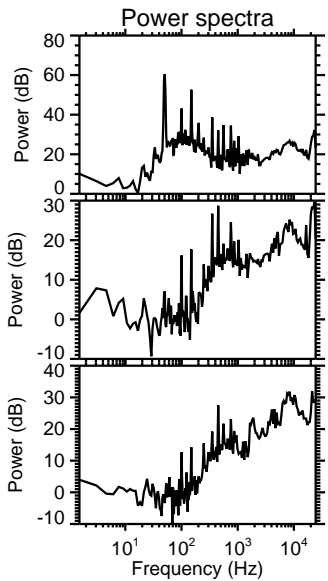
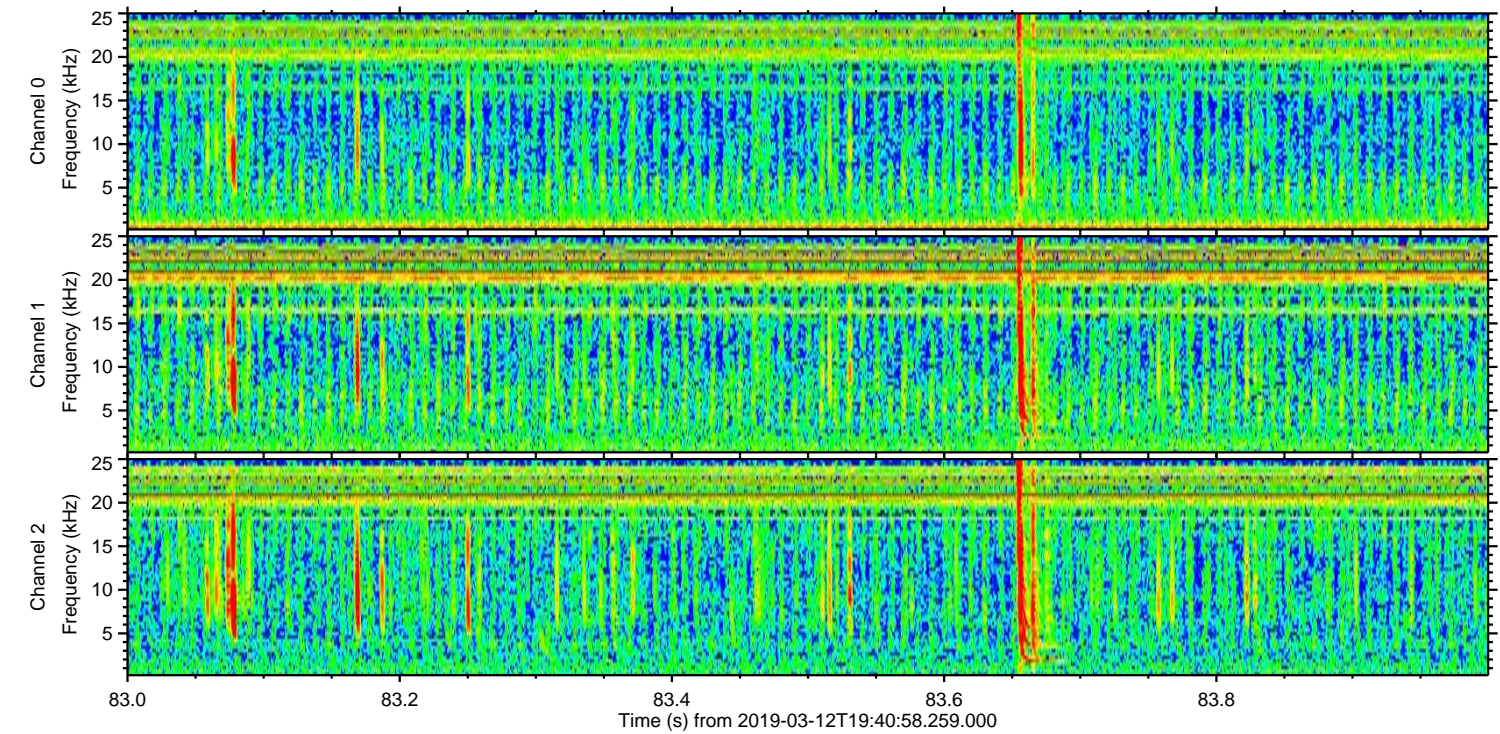
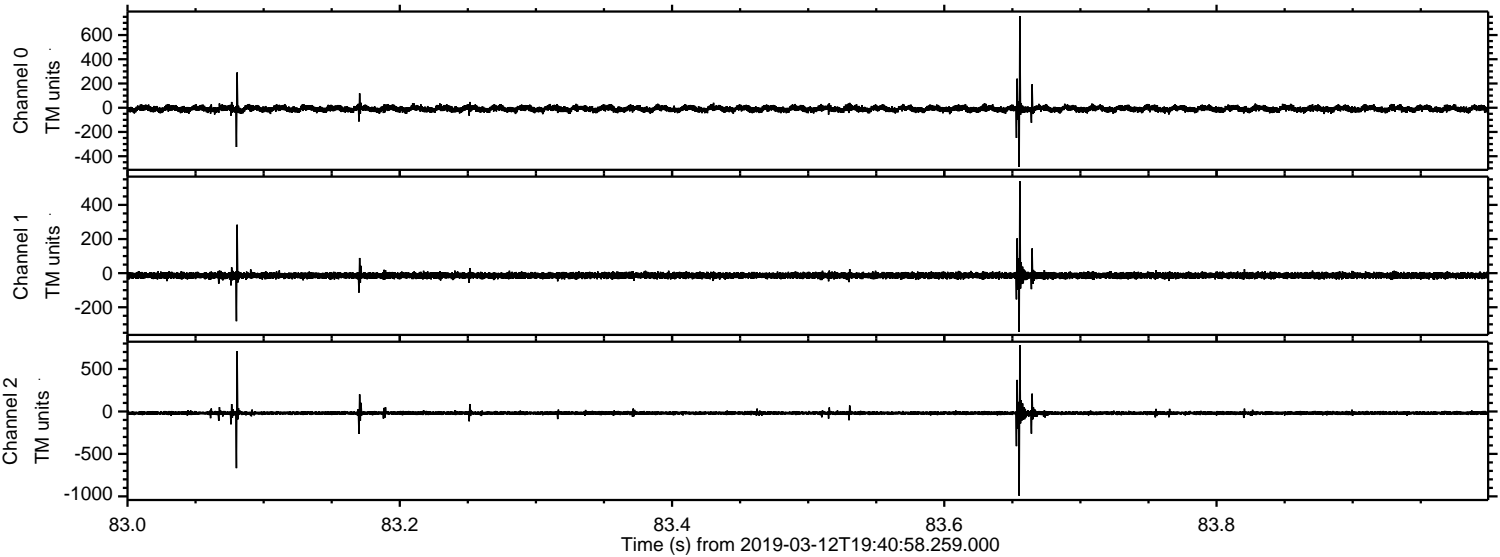
Processed Tue Mar 12 20:49:12 2019 by ELM ver.2012-10-06 from 001__elm20190312_194057__dat00.bin



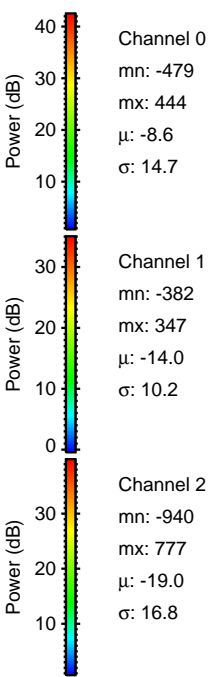
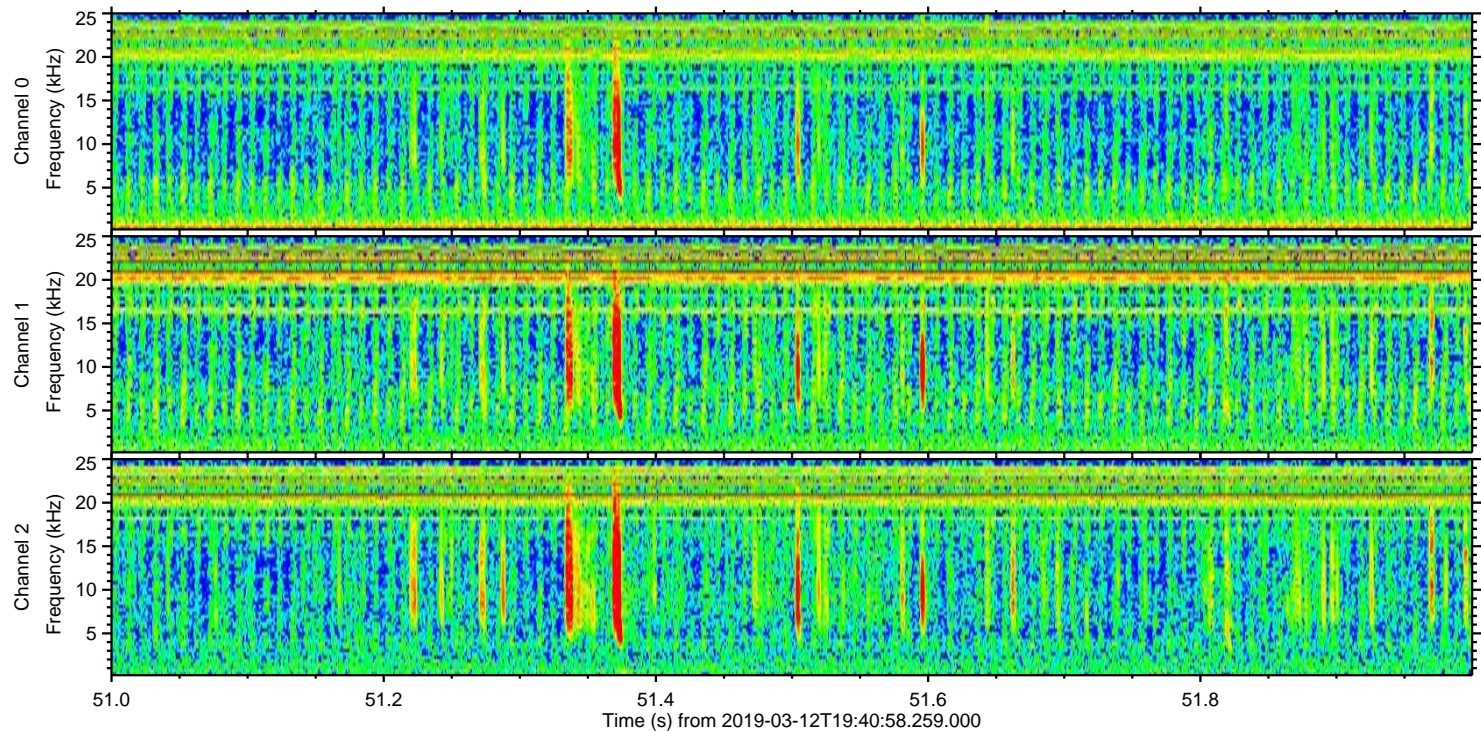
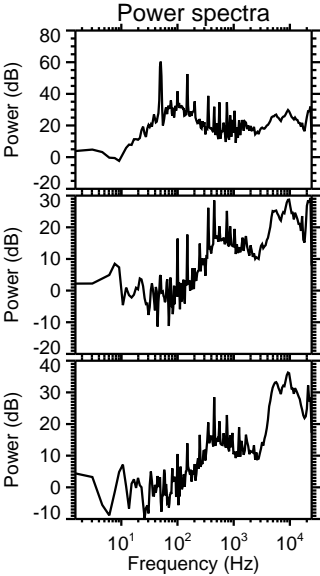
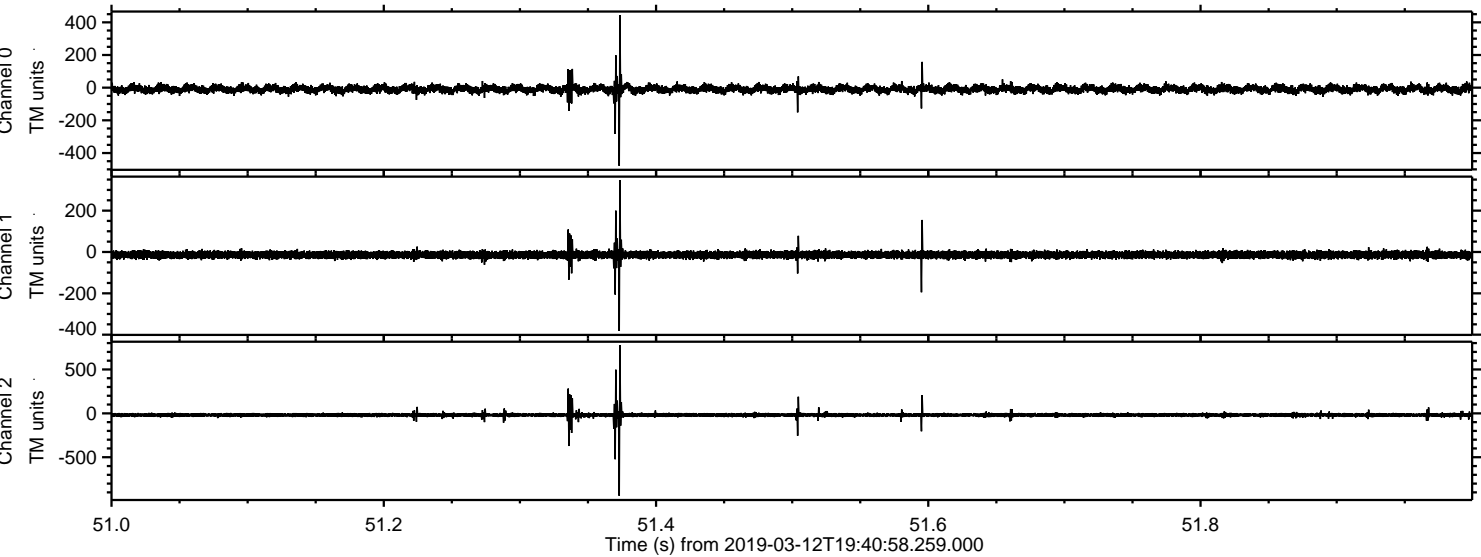
Processed Tue Mar 12 20:49:21 2019 by ELM ver.2012-10-06 from 001__elm20190312_194057__dat00.bin



Processed Tue Mar 12 20:49:22 2019 by ELM ver.2012-10-06 from 001__elm20190312_194057__dat00.bin

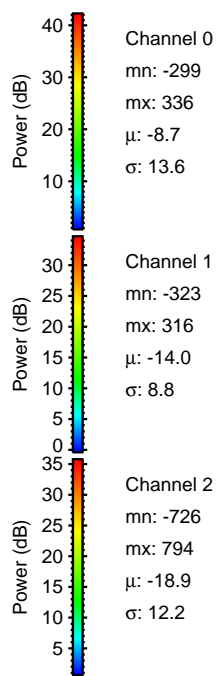
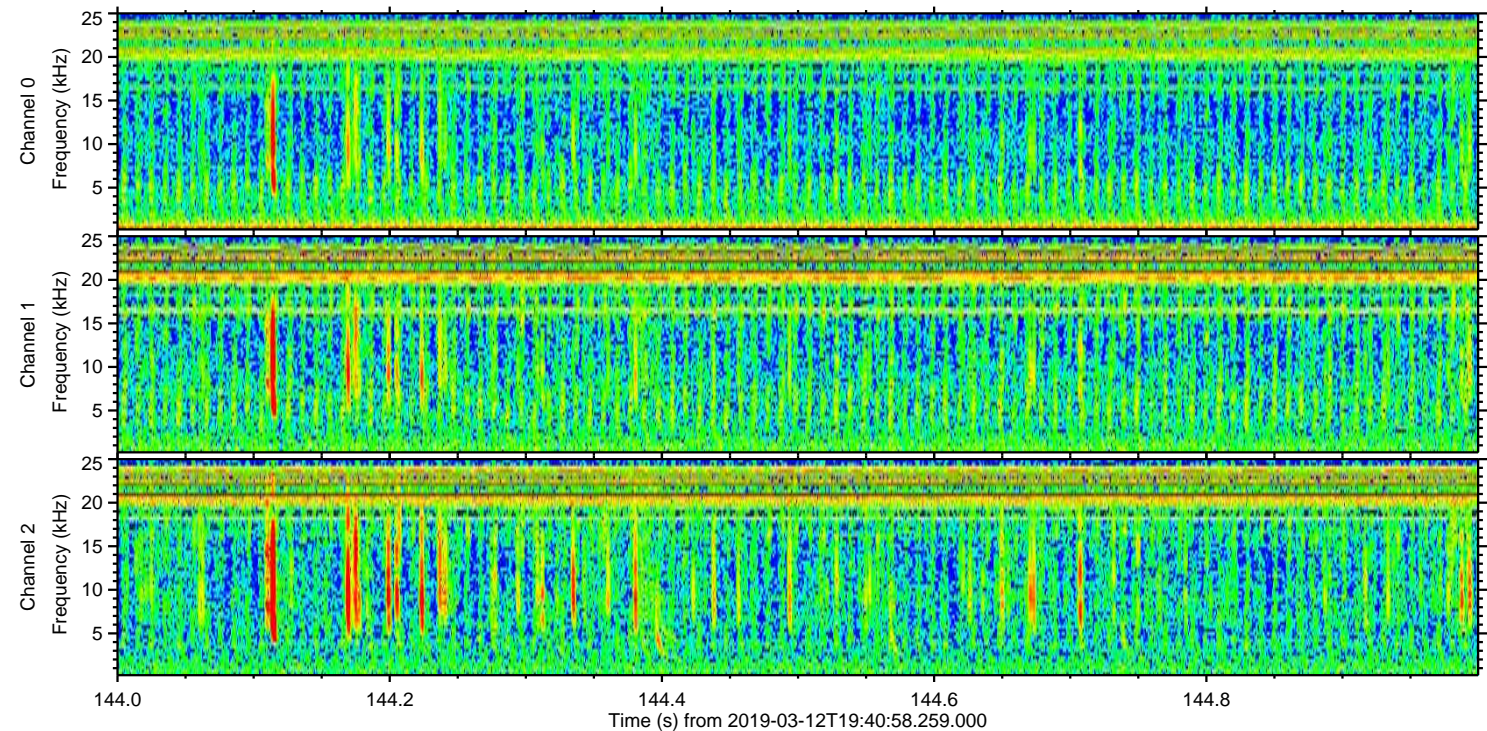
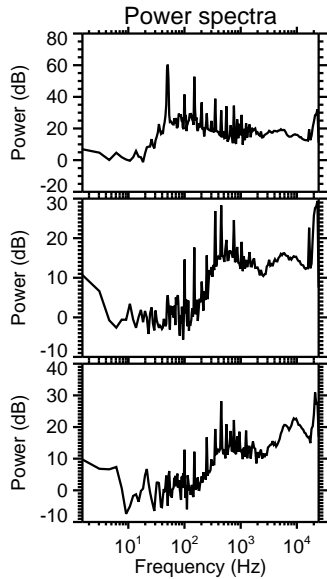
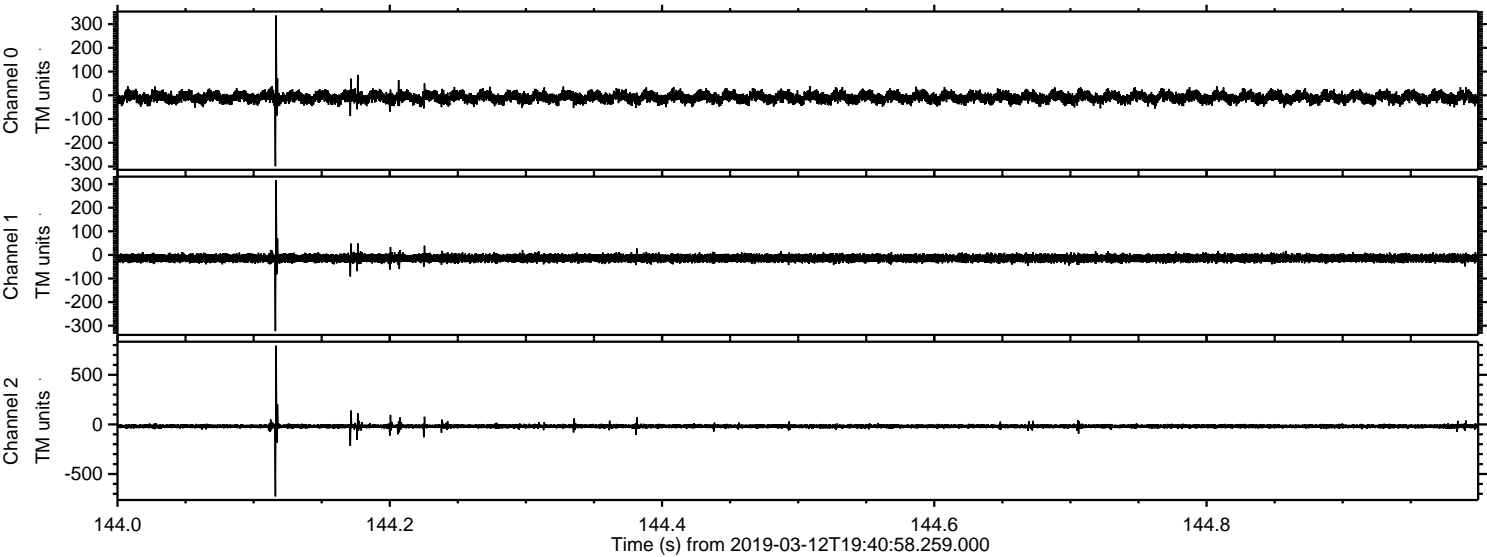


Processed Tue Mar 12 20:49:22 2019 by ELM ver.2012-10-06 from 001__elm20190312_194057__dat00.bin



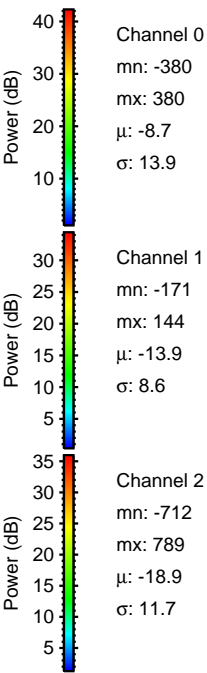
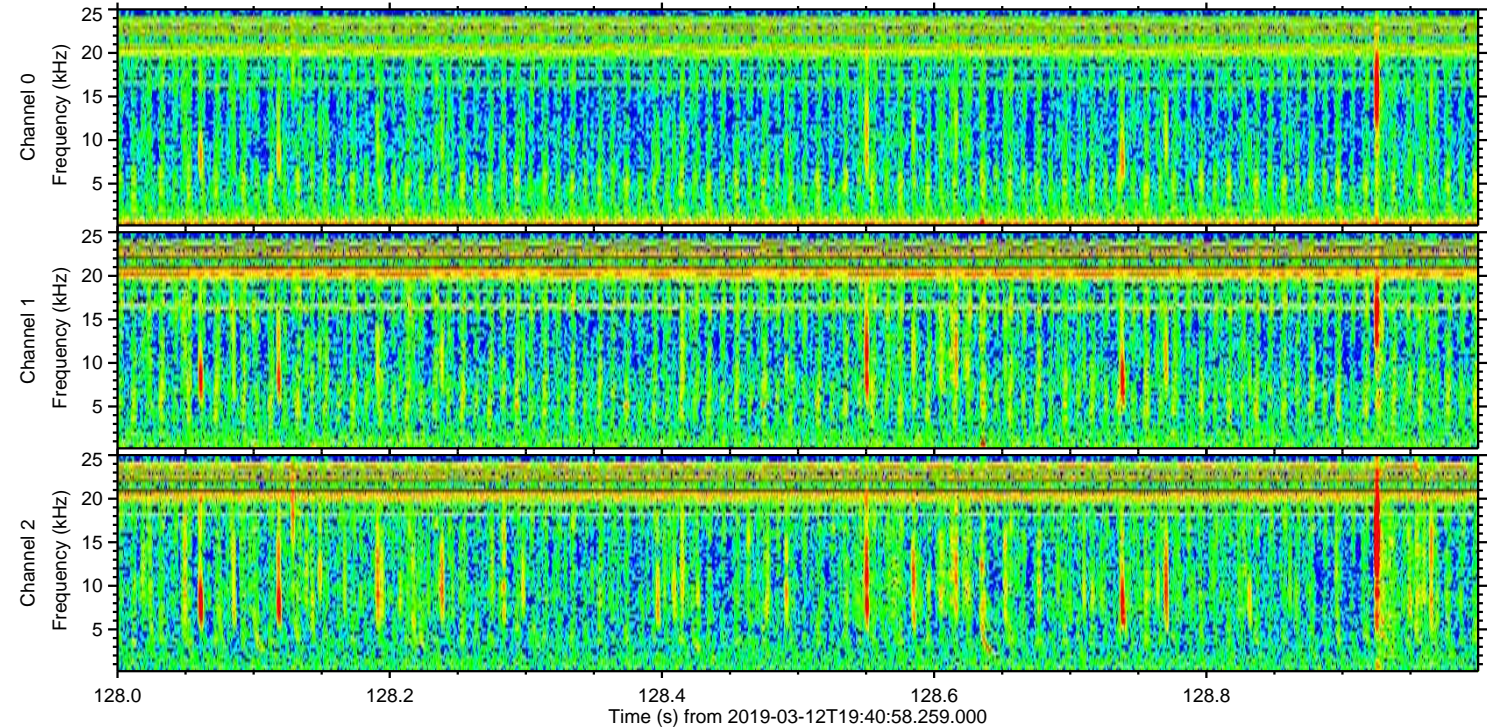
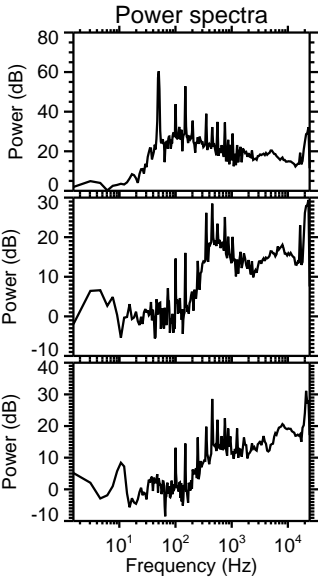
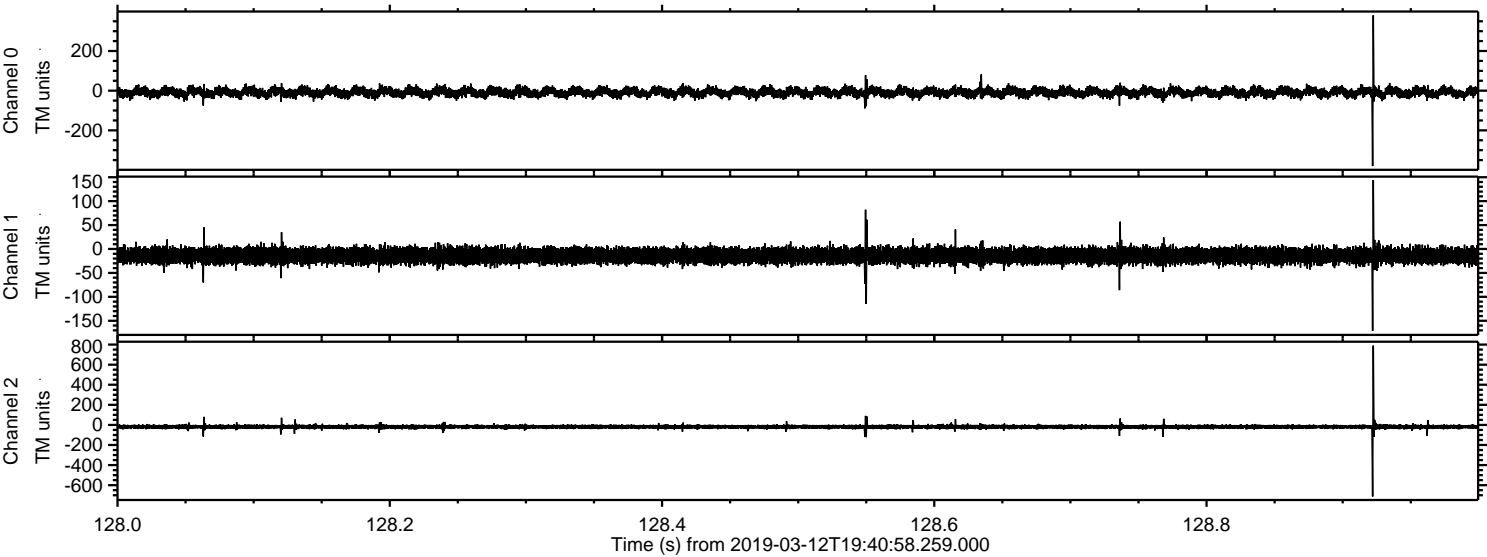
ELMAVAN 3D WAVEFORMS (Measured data sampled at 50 kHz) 51000 packets of 144 samples from 2019-03-12T19:40:58.259.000. Part 145/147

Processed Tue Mar 12 20:49:23 2019 by ELM ver.2012-10-06 from 001__elm20190312_194057__dat00.bin

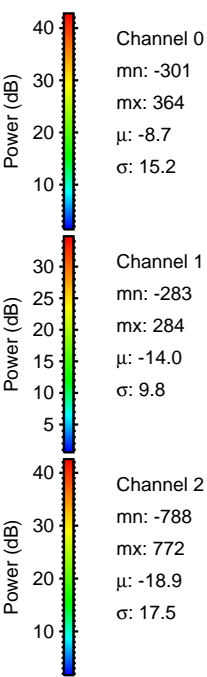
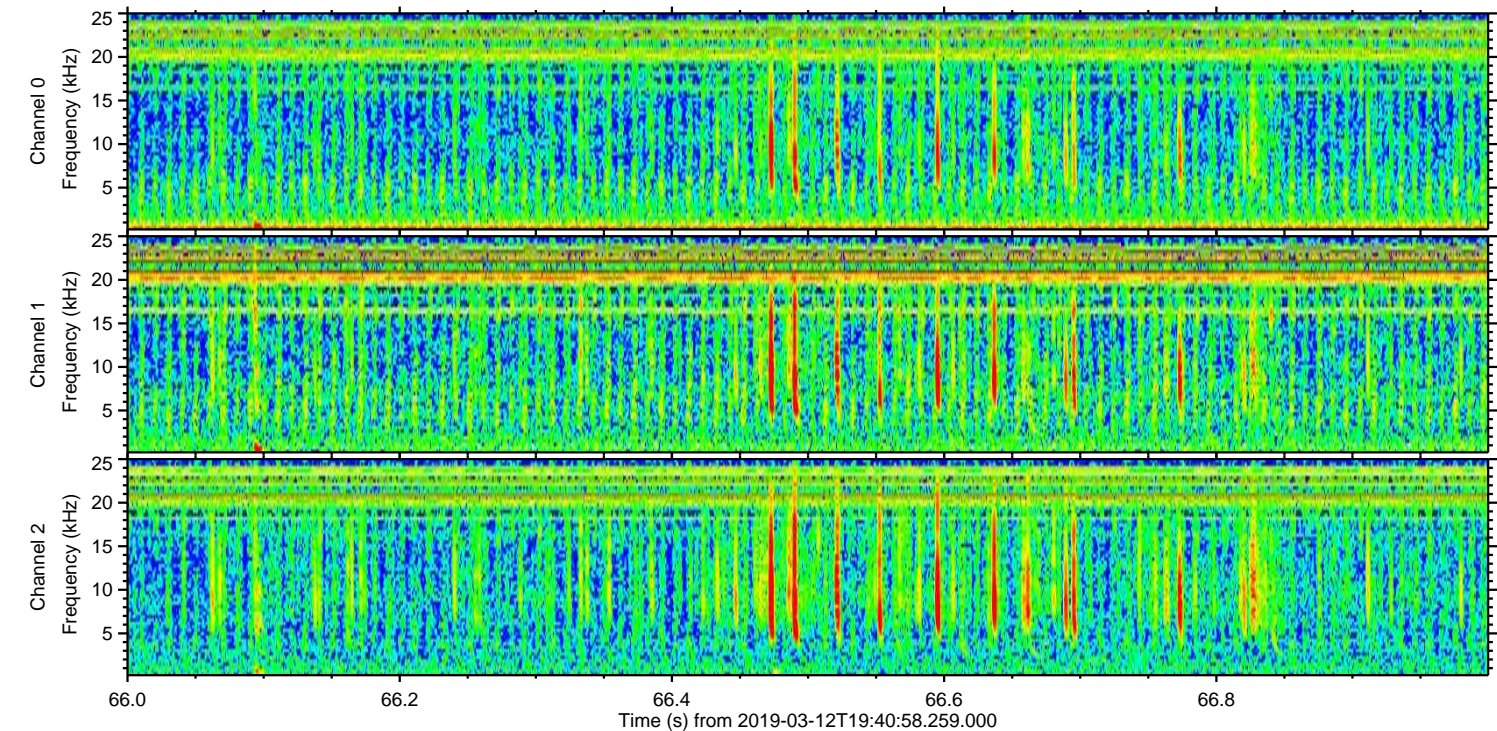
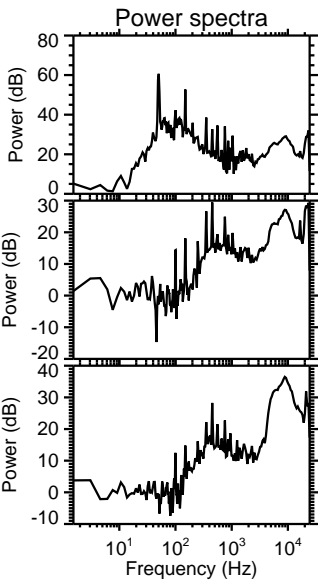
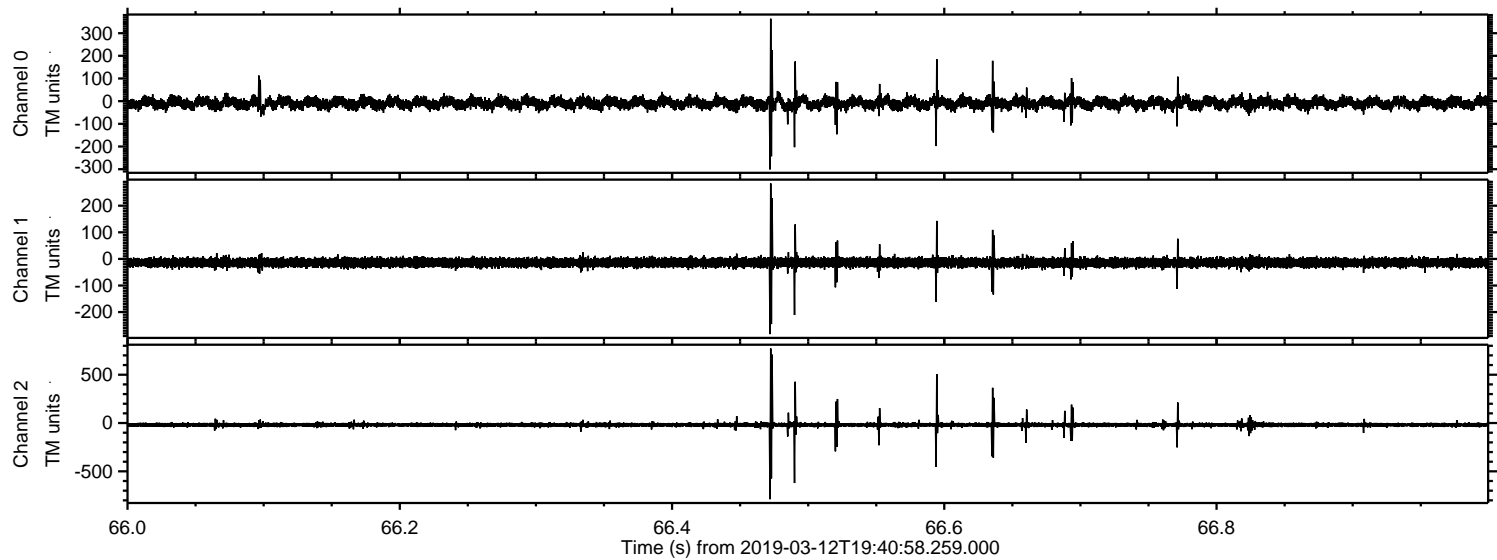


ELMAVAN 3D WAVEFORMS (Measured data sampled at 50 kHz) 51000 packets of 144 samples from 2019-03-12T19:40:58.259.000. Part 129/147

Processed Tue Mar 12 20:49:24 2019 by ELM ver.2012-10-06 from 001__elm20190312_194057__dat00.bin

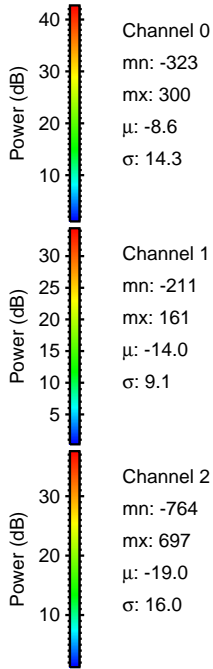
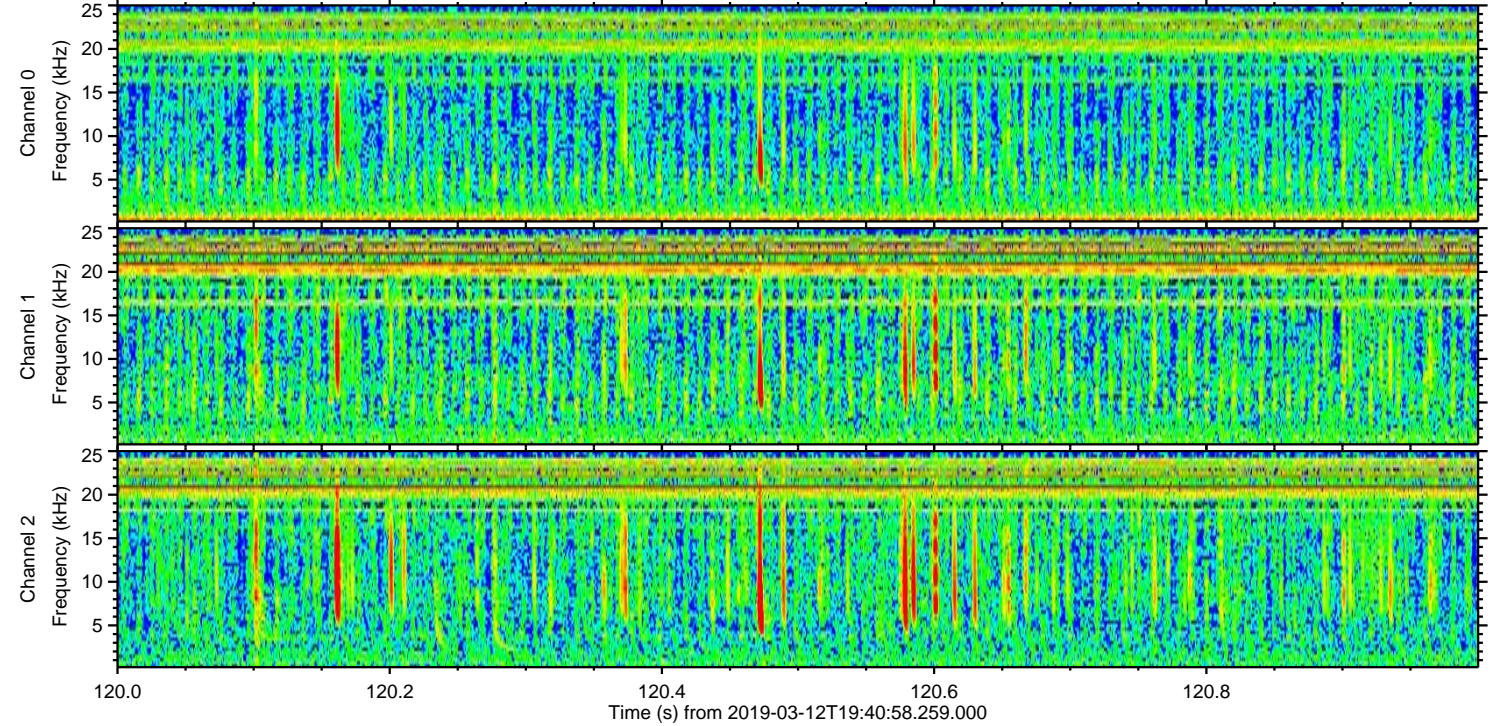
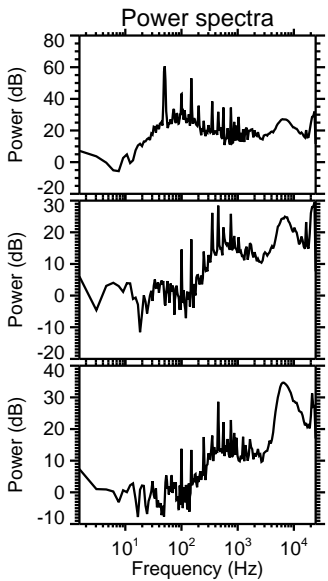
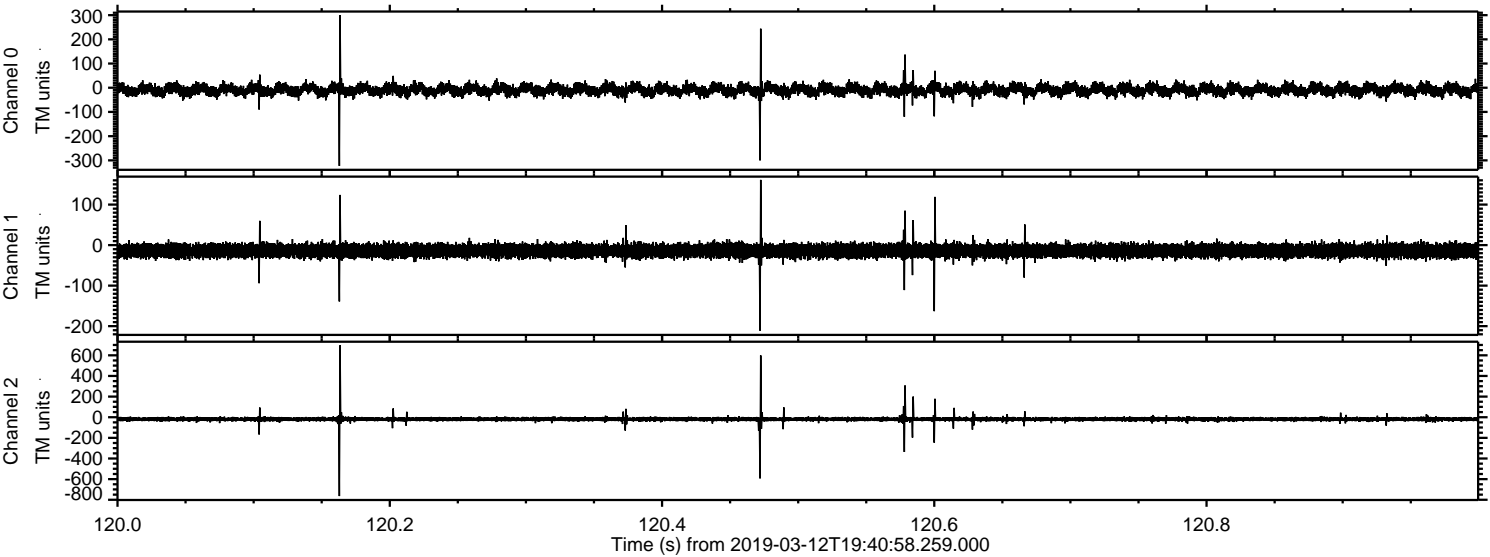


Processed Tue Mar 12 20:49:24 2019 by ELM ver.2012-10-06 from 001__elm20190312_194057__dat00.bin



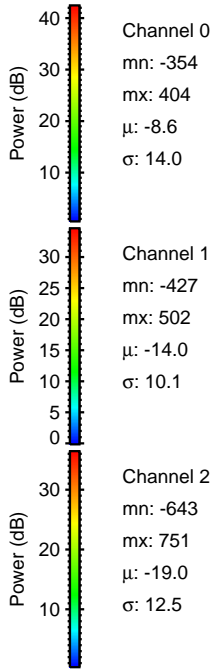
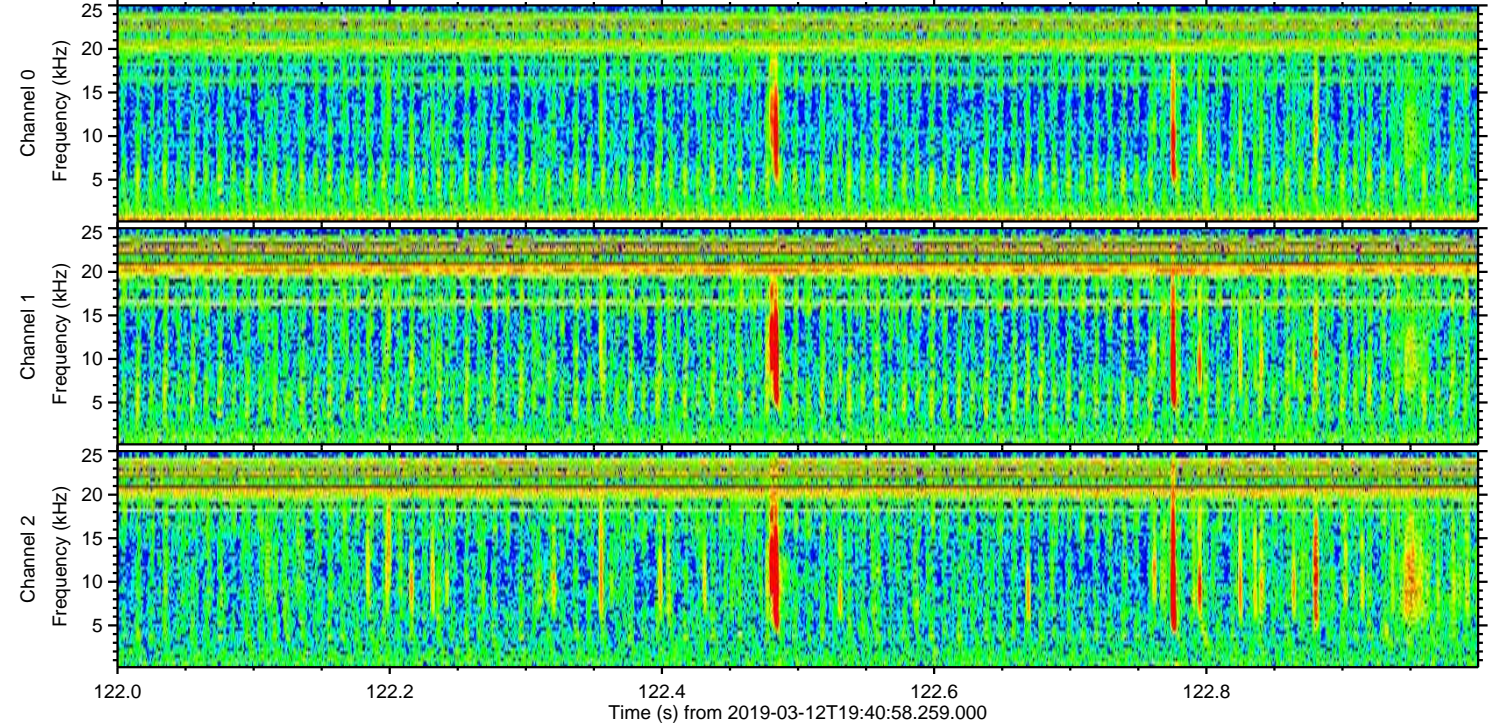
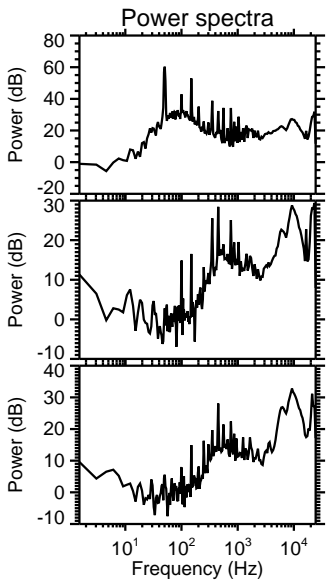
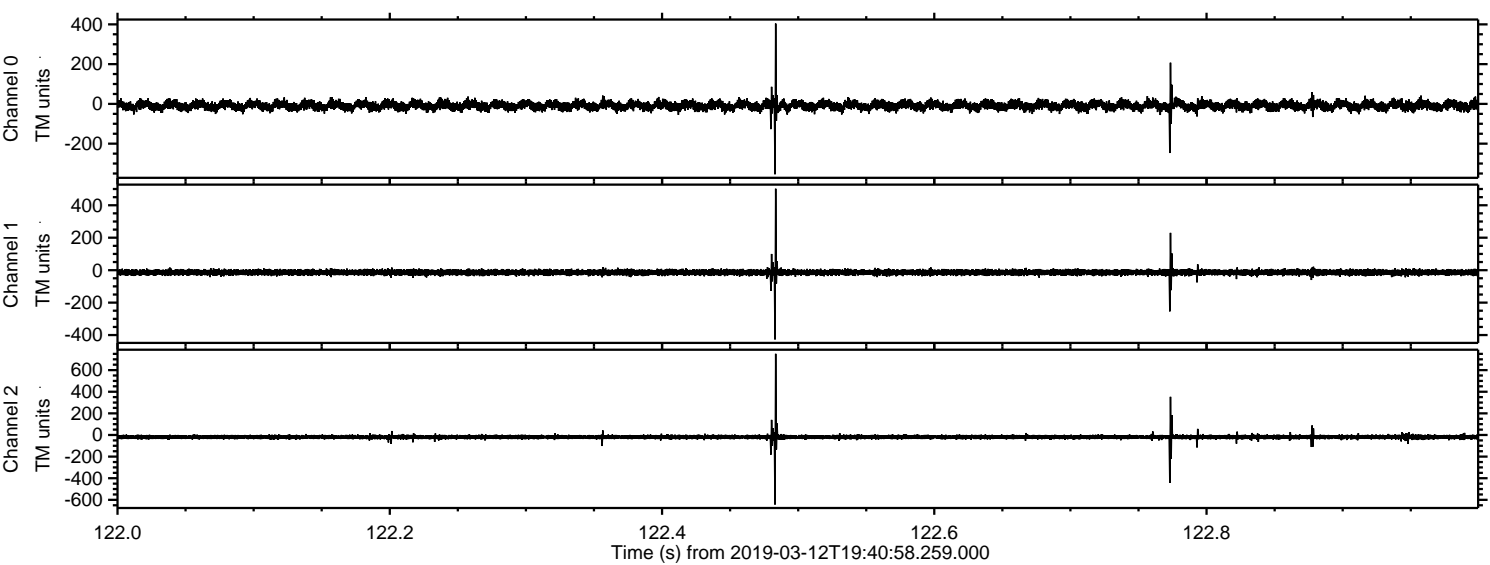
ELMAVAN 3D WAVEFORMS (Measured data sampled at 50 kHz) 51000 packets of 144 samples from 2019-03-12T19:40:58.259.000. Part 121/147

Processed Tue Mar 12 20:49:25 2019 by ELM ver.2012-10-06 from 001__elm20190312_194057__dat00.bin



ELMAVAN 3D WAVEFORMS (Measured data sampled at 50 kHz) 51000 packets of 144 samples from 2019-03-12T19:40:58.259.000. Part 123/147

Processed Tue Mar 12 20:49:26 2019 by ELM ver.2012-10-06 from 001__elm20190312_194057__dat00.bin

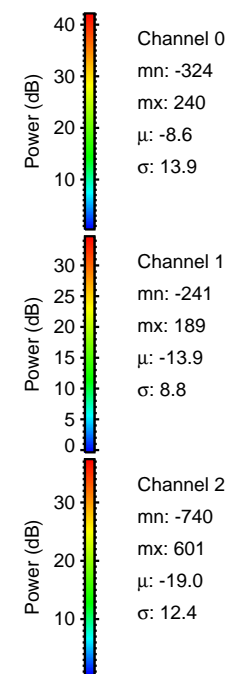
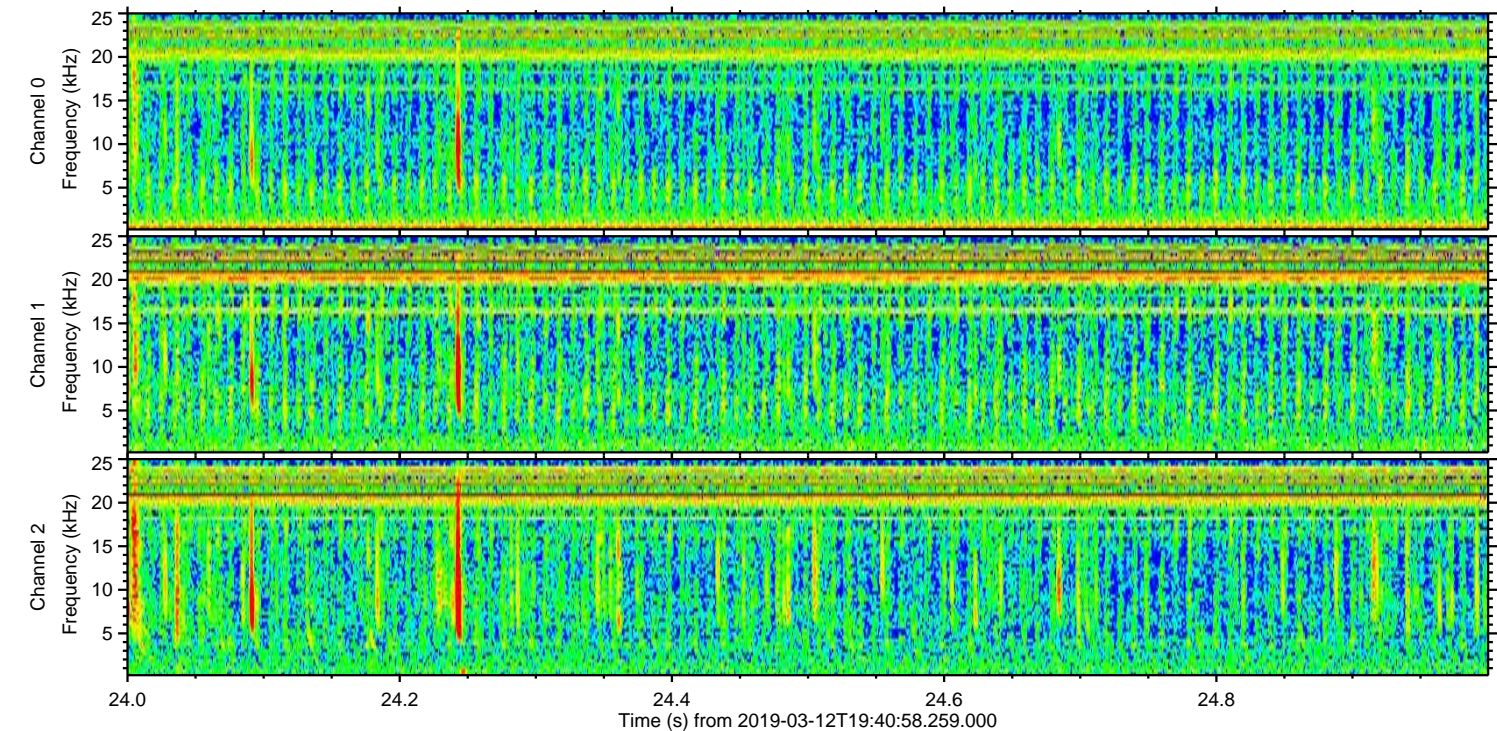
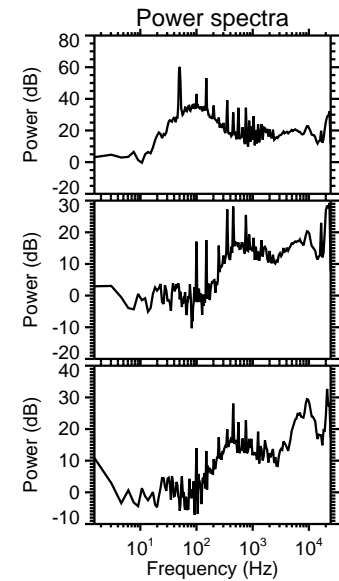
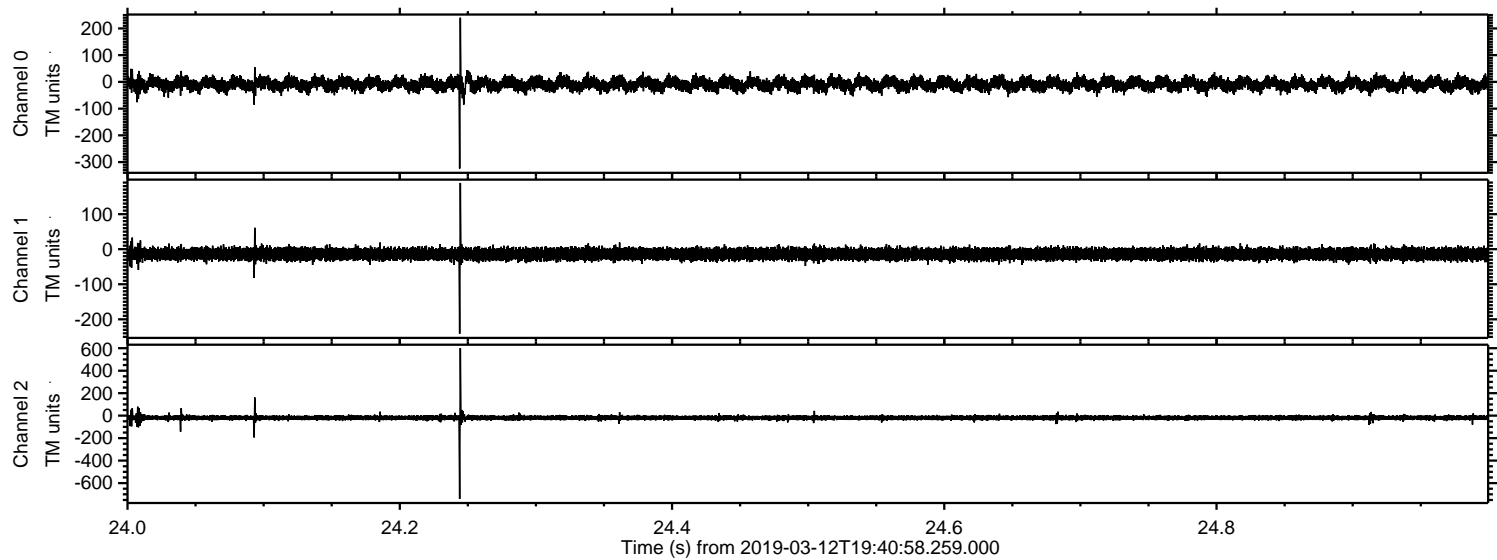


Channel 0
mn: -354
mx: 404
 μ : -8.6
 σ : 14.0

Channel 1
mn: -427
mx: 502
 μ : -14.0
 σ : 10.1

Channel 2
mn: -643
mx: 751
 μ : -19.0
 σ : 12.5

Processed Tue Mar 12 20:49:26 2019 by ELM ver.2012-10-06 from 001__elm20190312_194057__dat00.bin



Processed Tue Mar 12 20:49:27 2019 by ELM ver.2012-10-06 from 001__elm20190312_194057__dat00.bin

