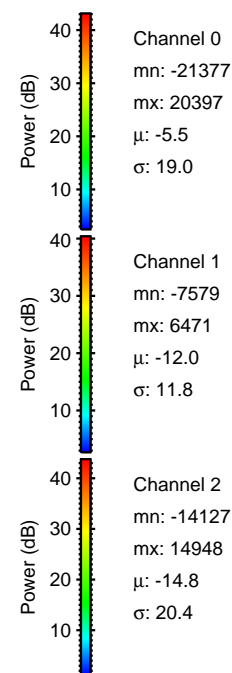
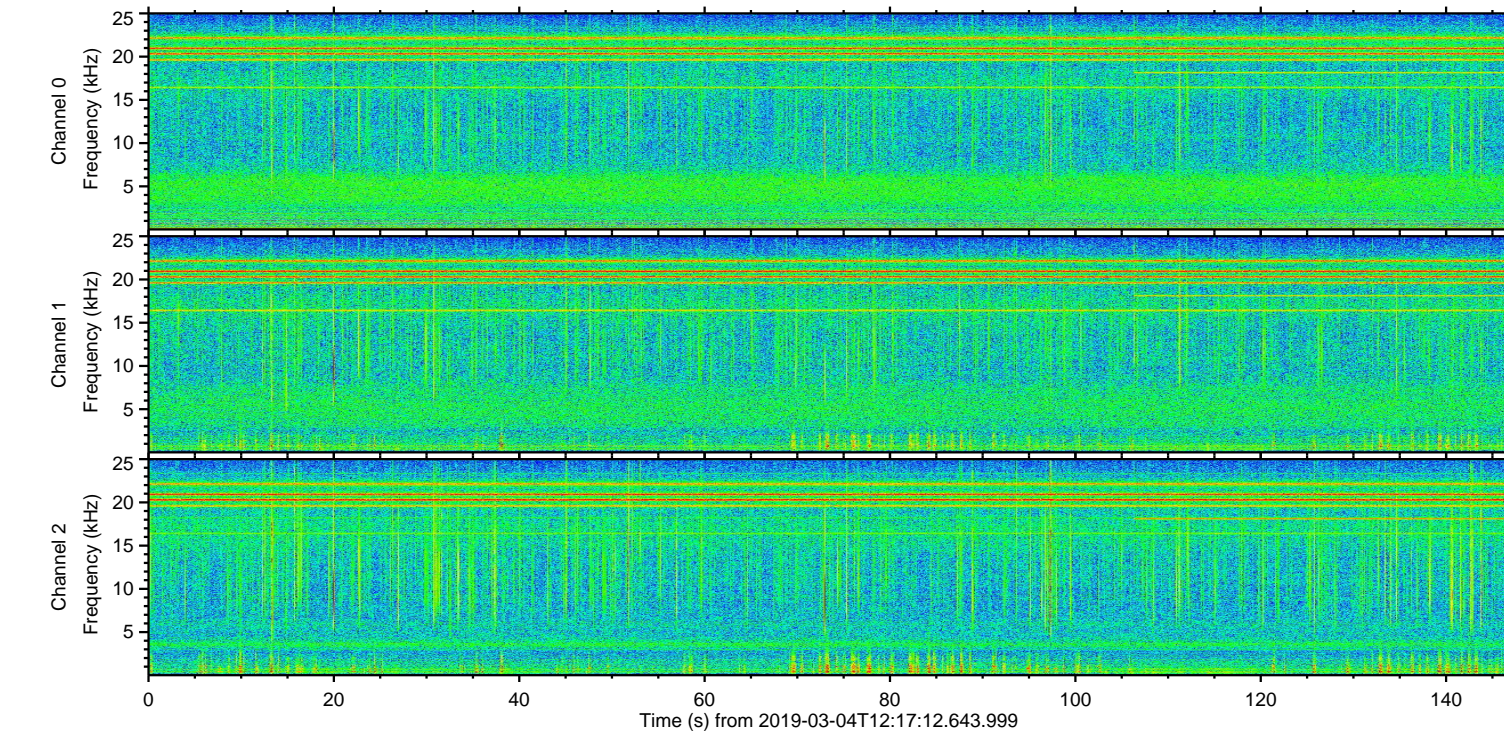
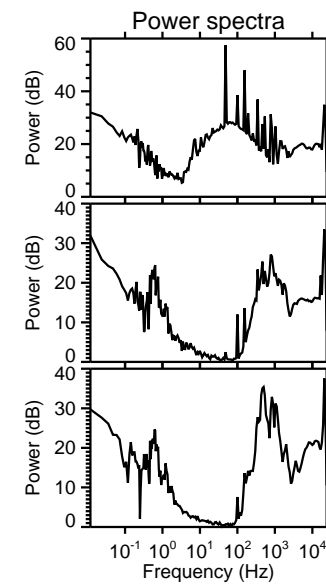
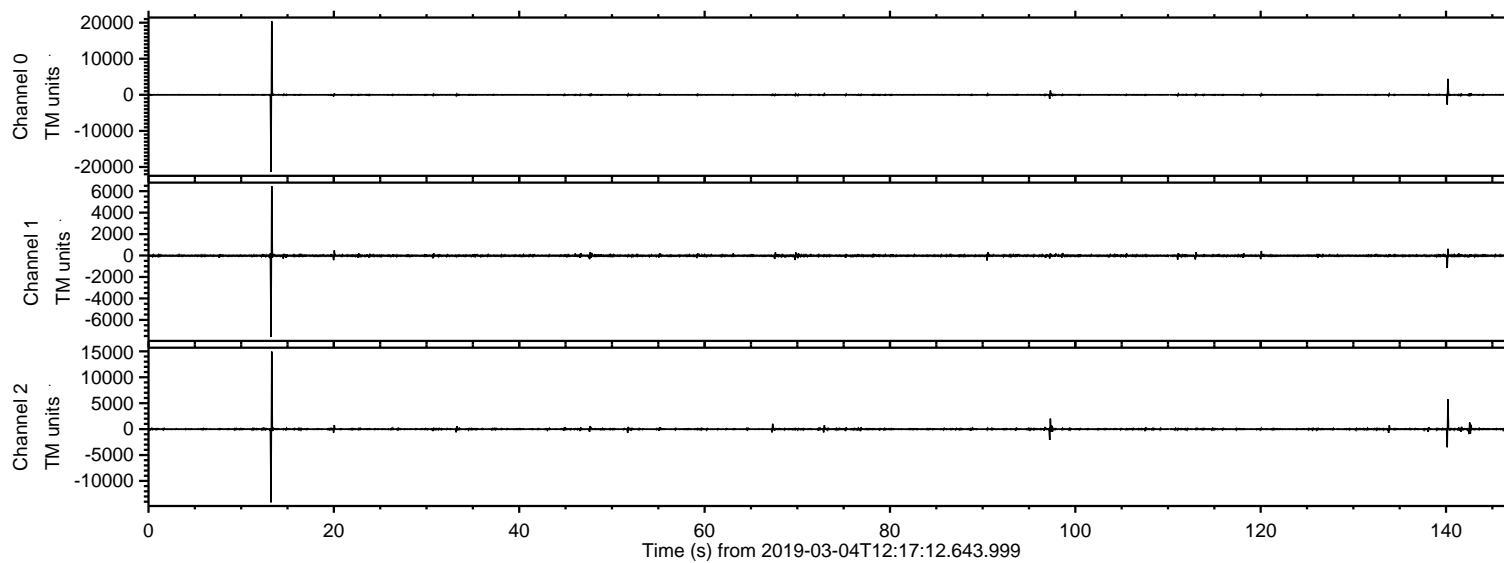


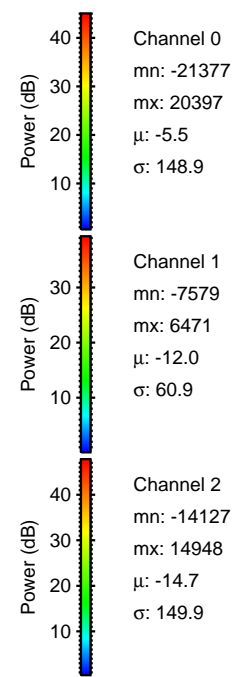
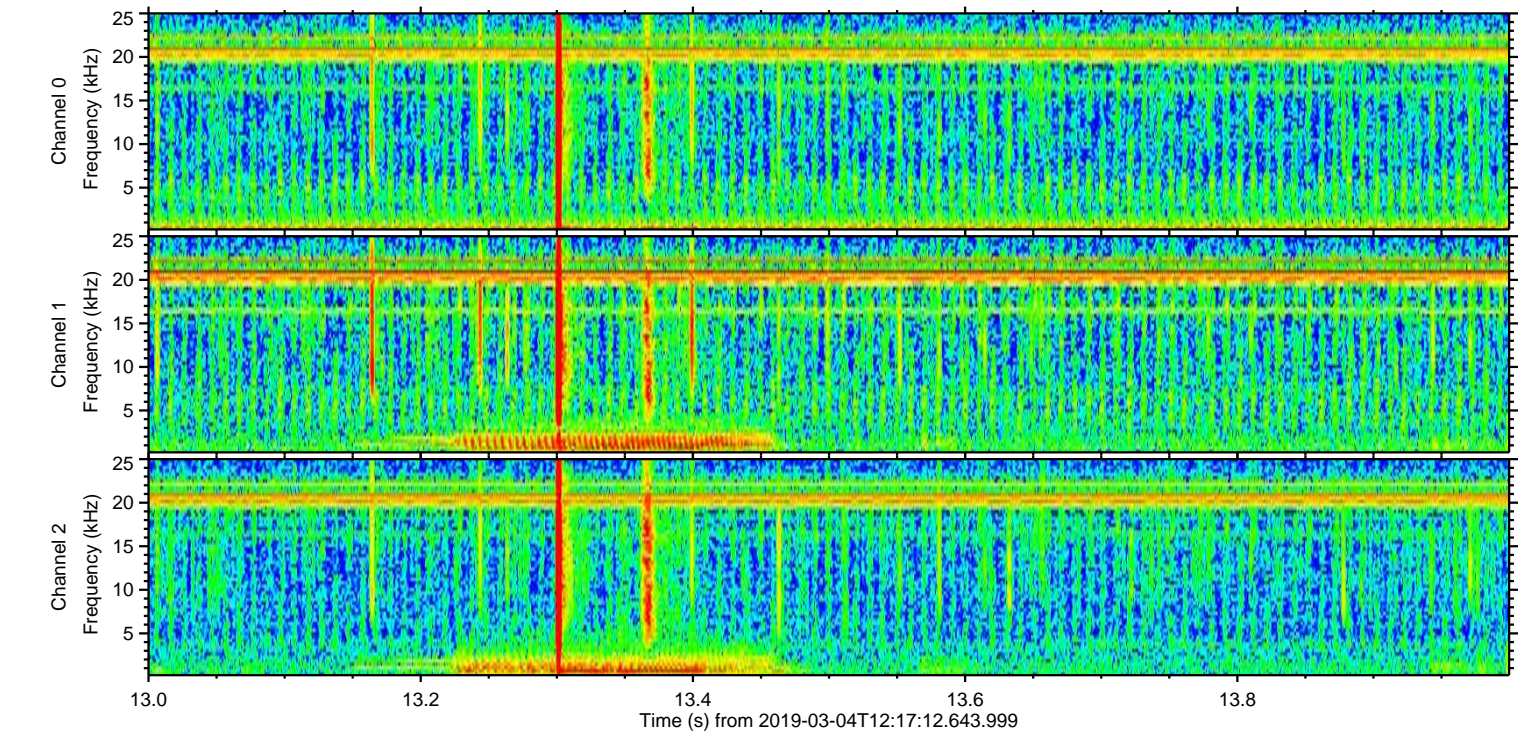
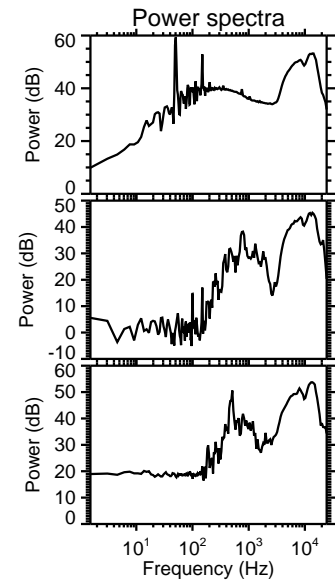
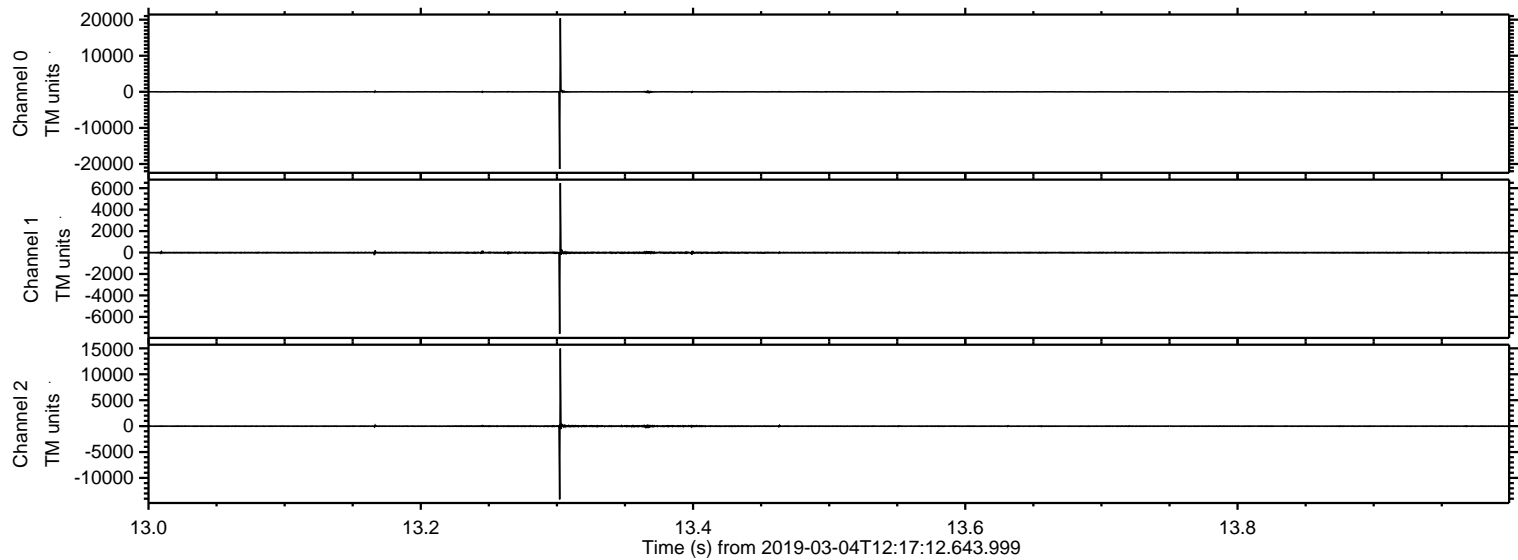
# ELMAVAN 3D WAVEFORMS (Measured data sampled at 50 kHz) 51000 packets of 144 samples from 2019-03-04T12:17:12.643.999.

Processed Mon Mar 4 13:24:38 2019 by ELM ver.2012-10-06 from 001\_\_elm20190304\_121711\_\_dat00.bin





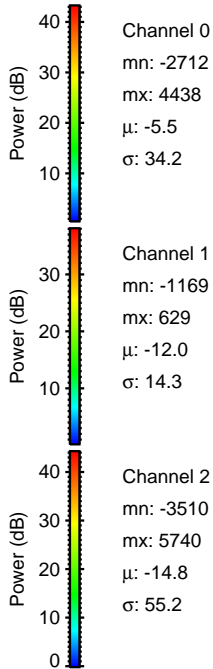
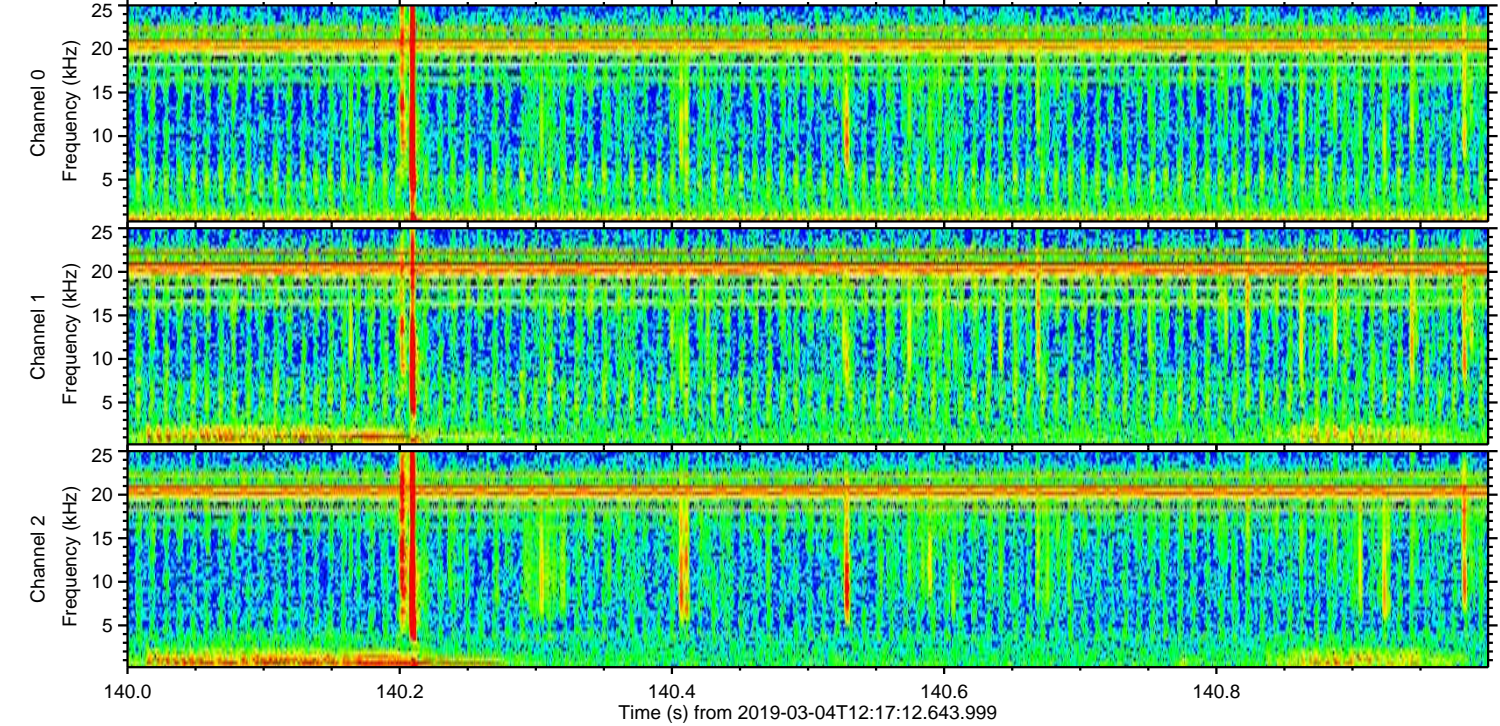
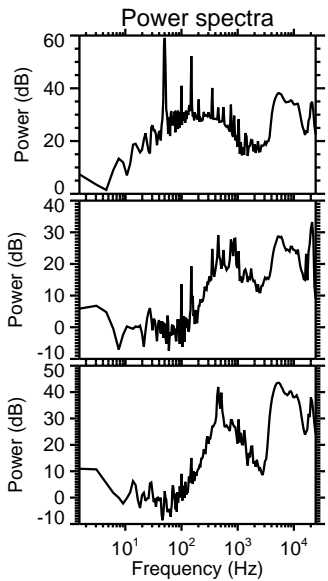
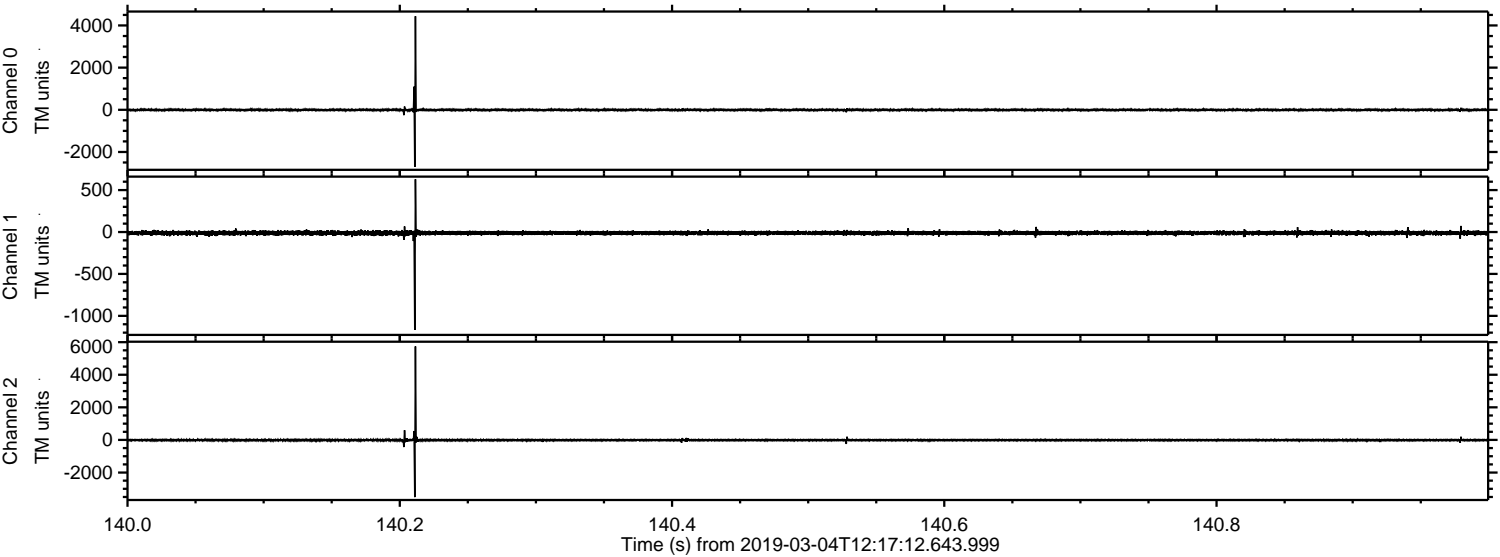
Processed Mon Mar 4 13:24:44 2019 by ELM ver.2012-10-06 from 001\_\_elm20190304\_121711\_\_dat00.bin





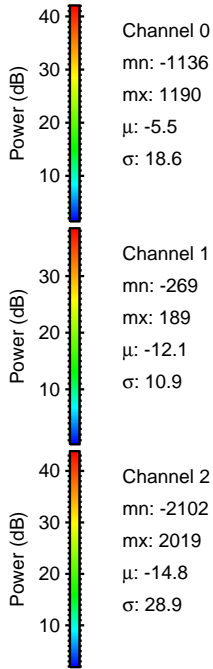
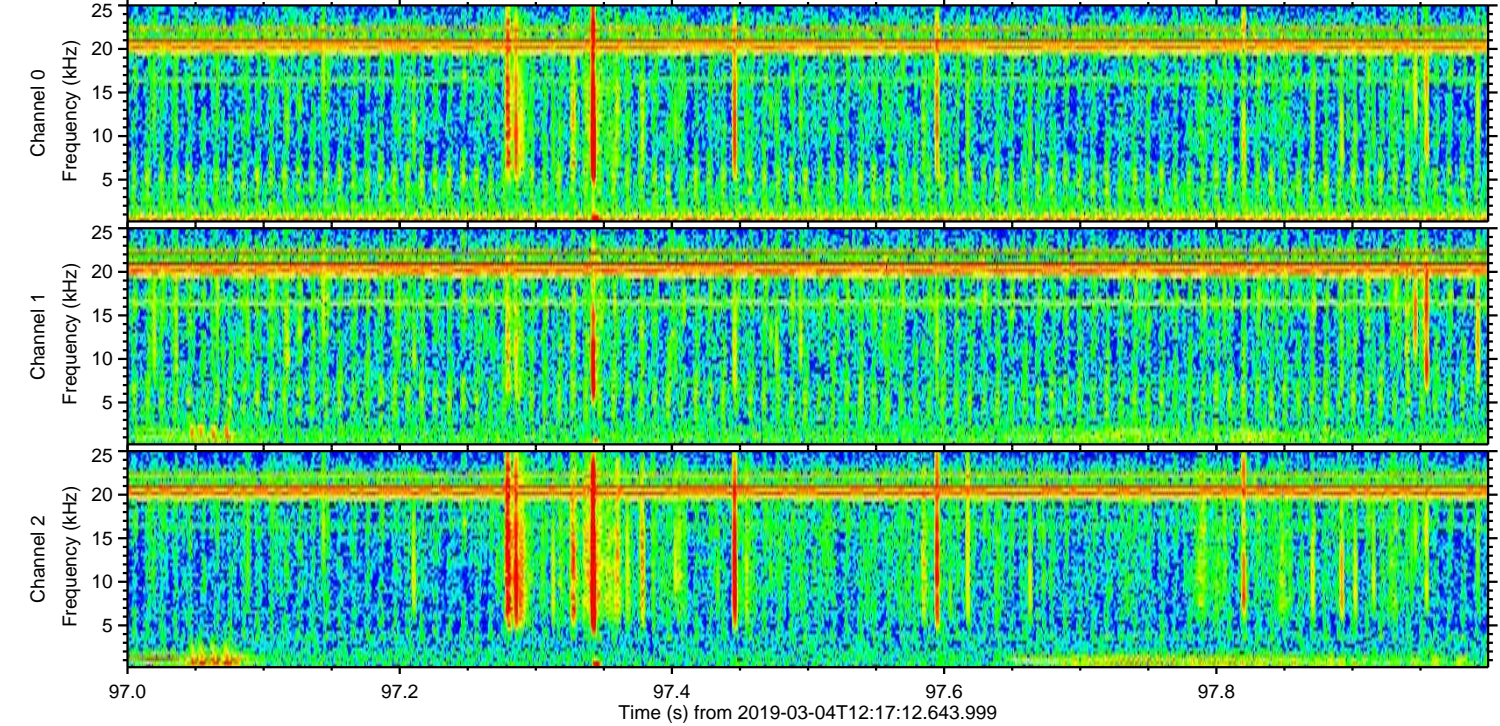
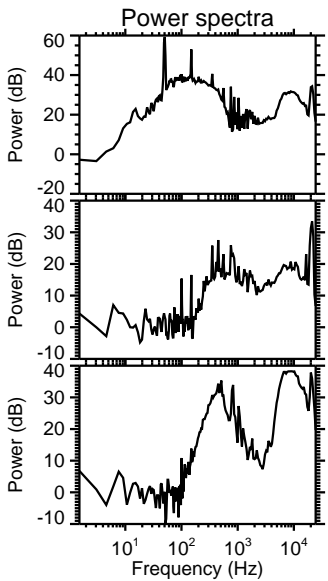
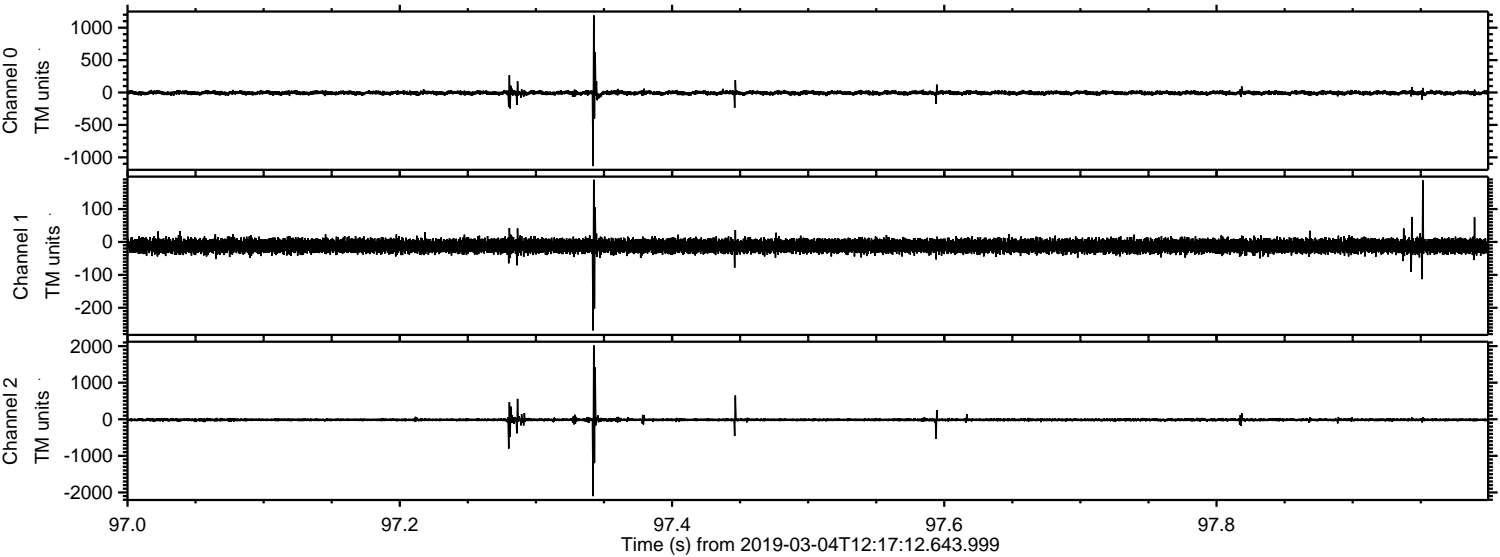
ELMAVAN 3D WAVEFORMS (Measured data sampled at 50 kHz) 51000 packets of 144 samples from 2019-03-04T12:17:12.643.999. Part 141/147

Processed Mon Mar 4 13:24:45 2019 by ELM ver.2012-10-06 from 001\_\_elm20190304\_121711\_\_dat00.bin





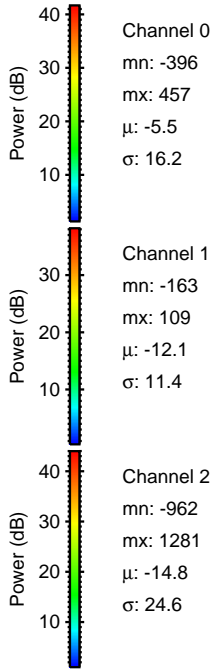
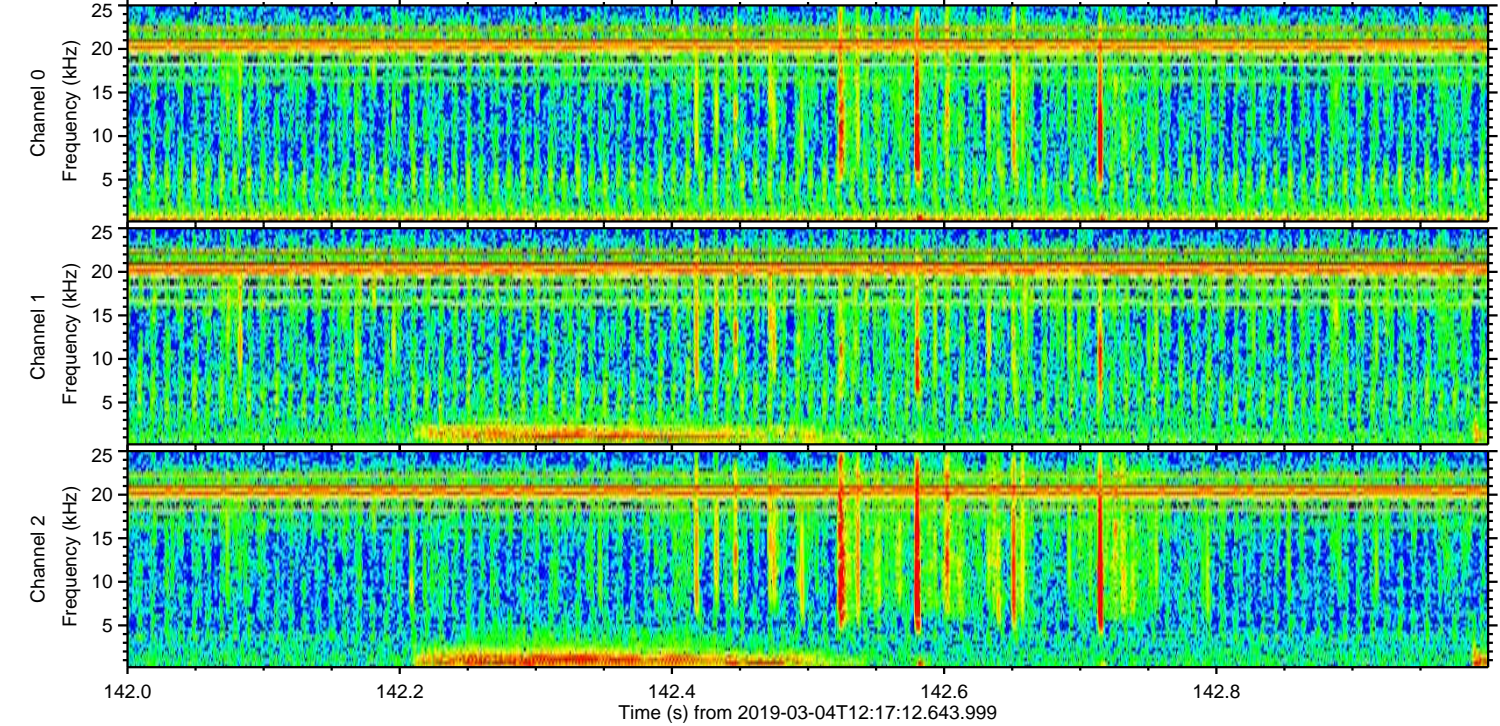
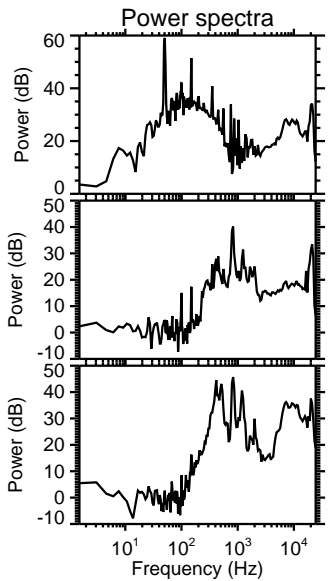
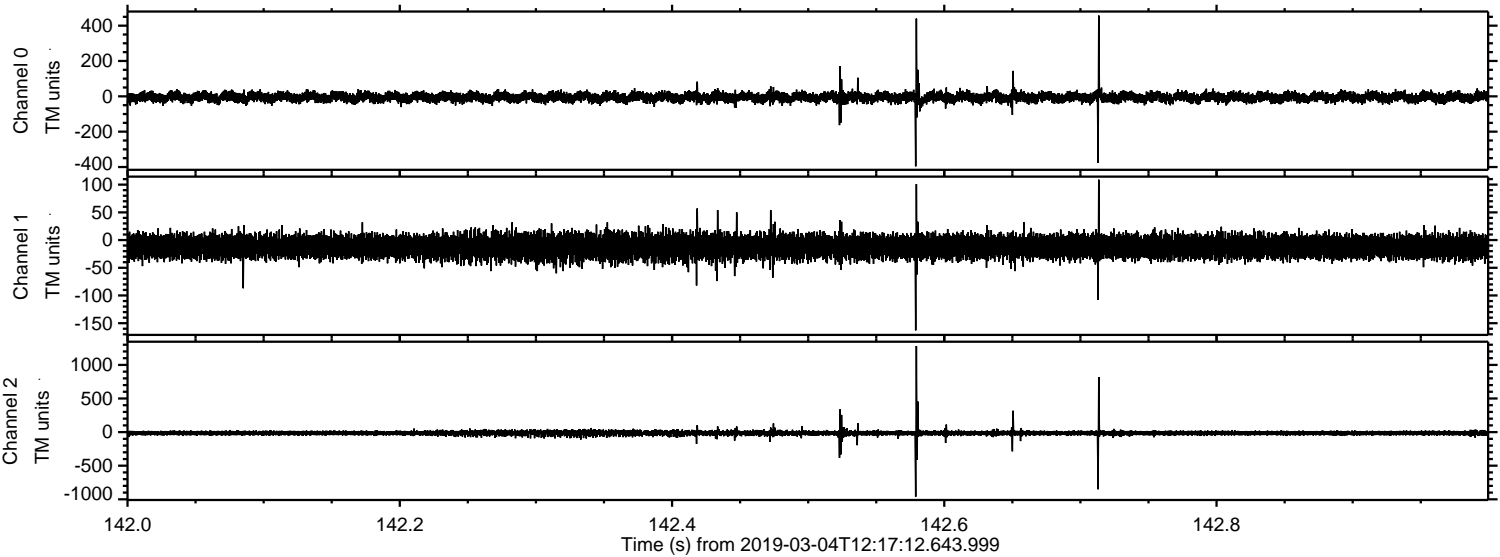
Processed Mon Mar 4 13:24:46 2019 by ELM ver.2012-10-06 from 001\_\_elm20190304\_121711\_\_dat00.bin





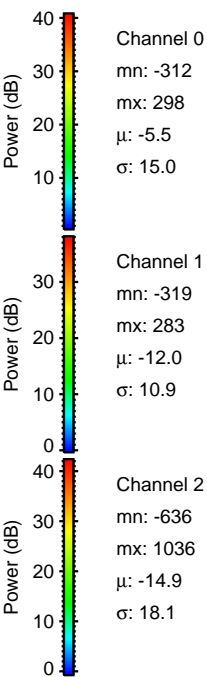
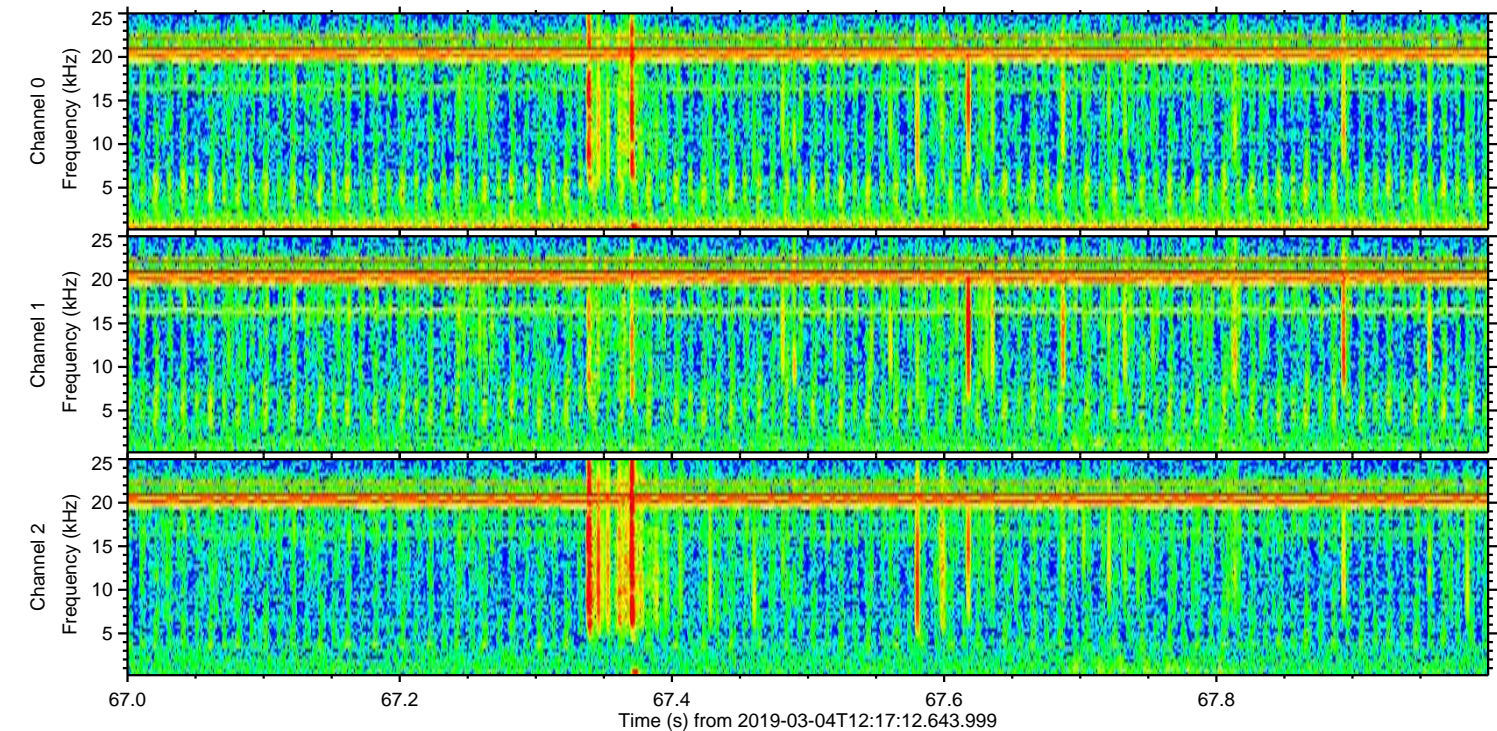
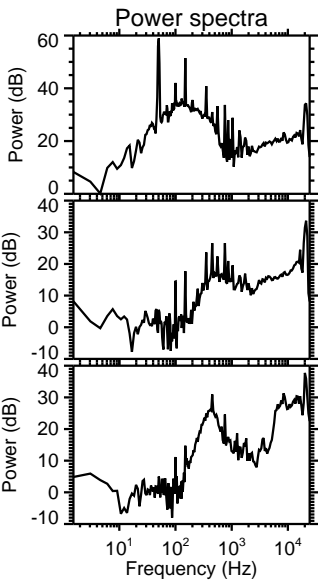
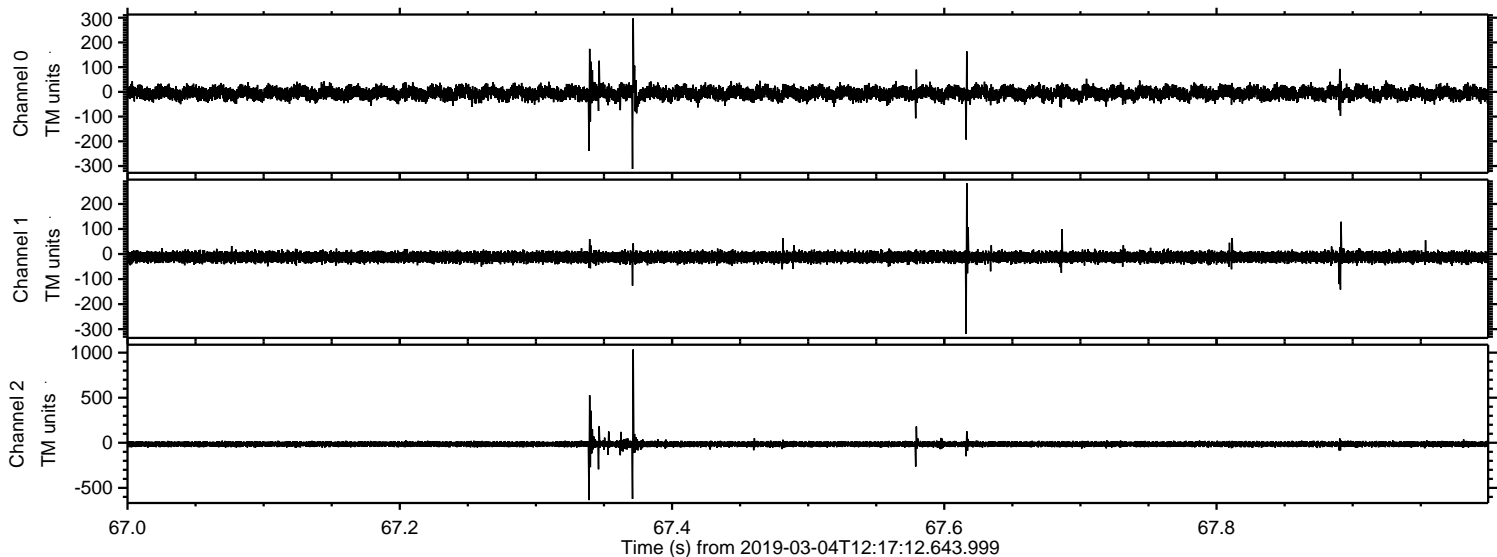
ELMAVAN 3D WAVEFORMS (Measured data sampled at 50 kHz) 51000 packets of 144 samples from 2019-03-04T12:17:12.643.999. Part 143/147

Processed Mon Mar 4 13:24:46 2019 by ELM ver.2012-10-06 from 001\_\_elm20190304\_121711\_\_dat00.bin



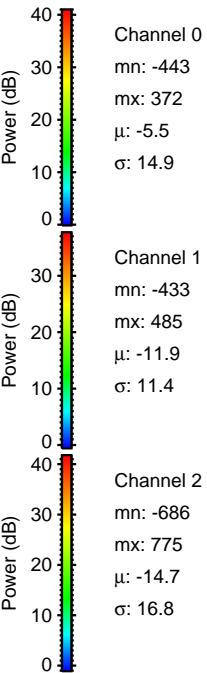
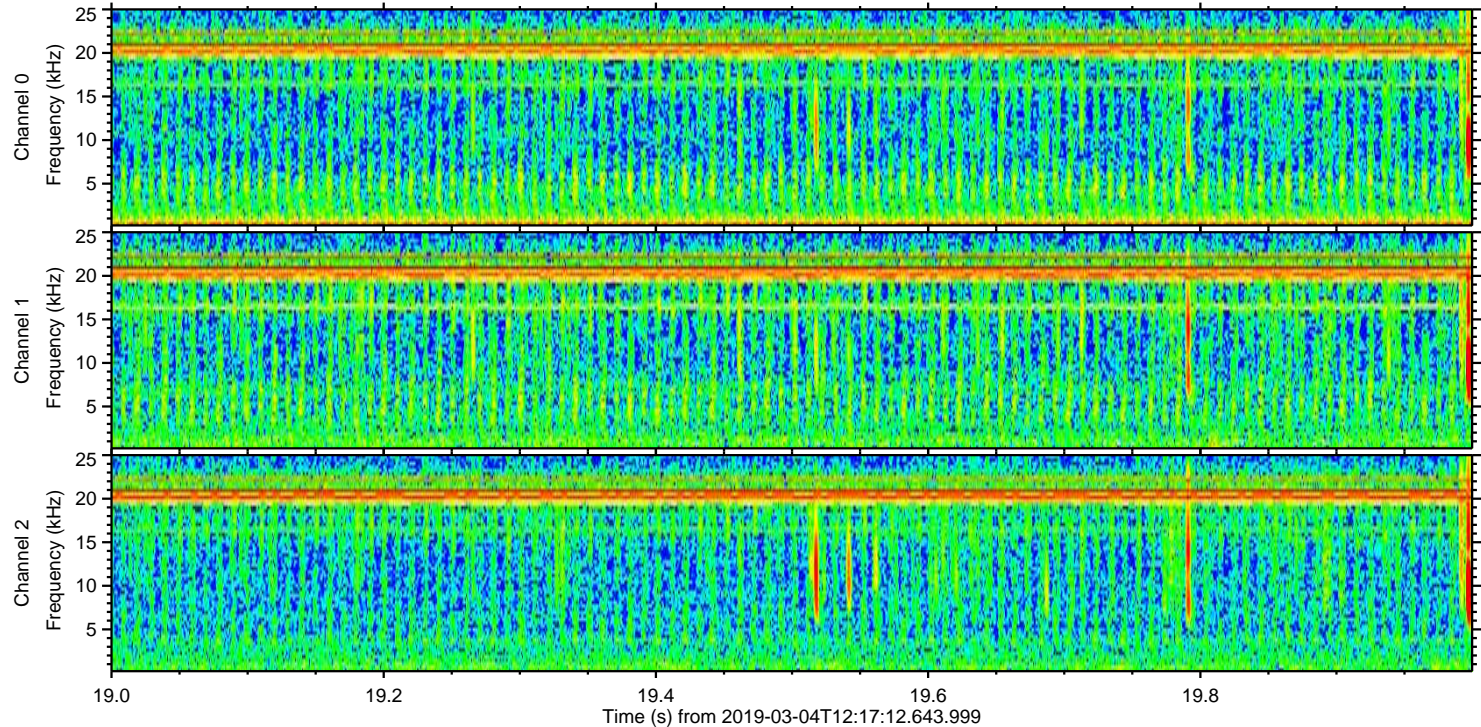
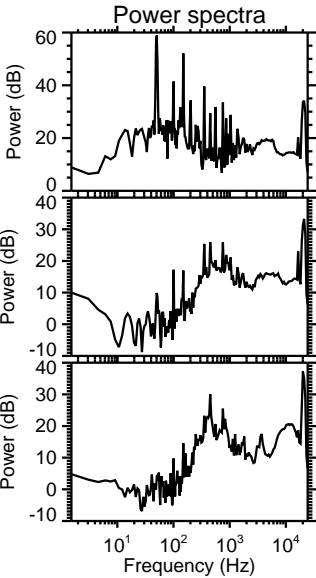
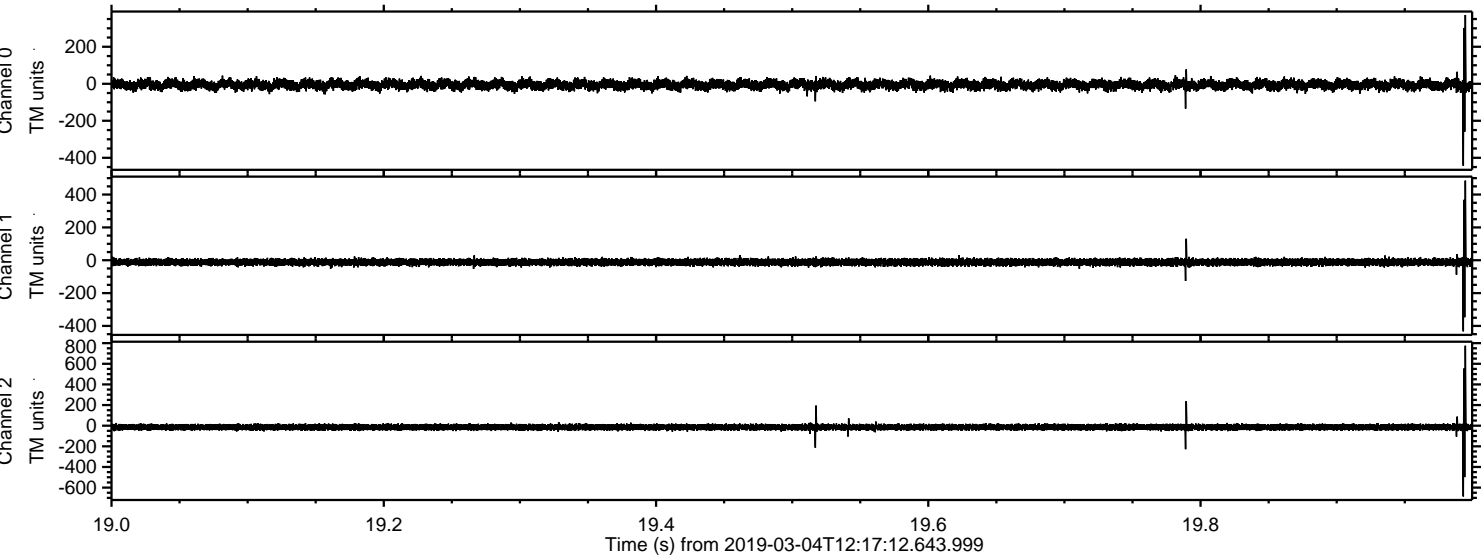


Processed Mon Mar 4 13:24:47 2019 by ELM ver.2012-10-06 from 001\_\_elm20190304\_121711\_\_dat00.bin



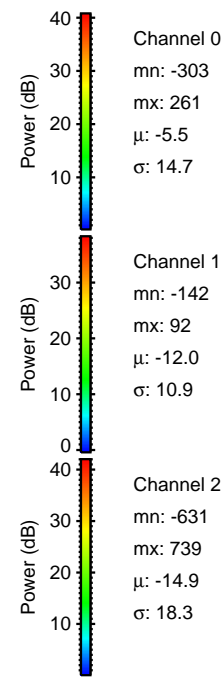
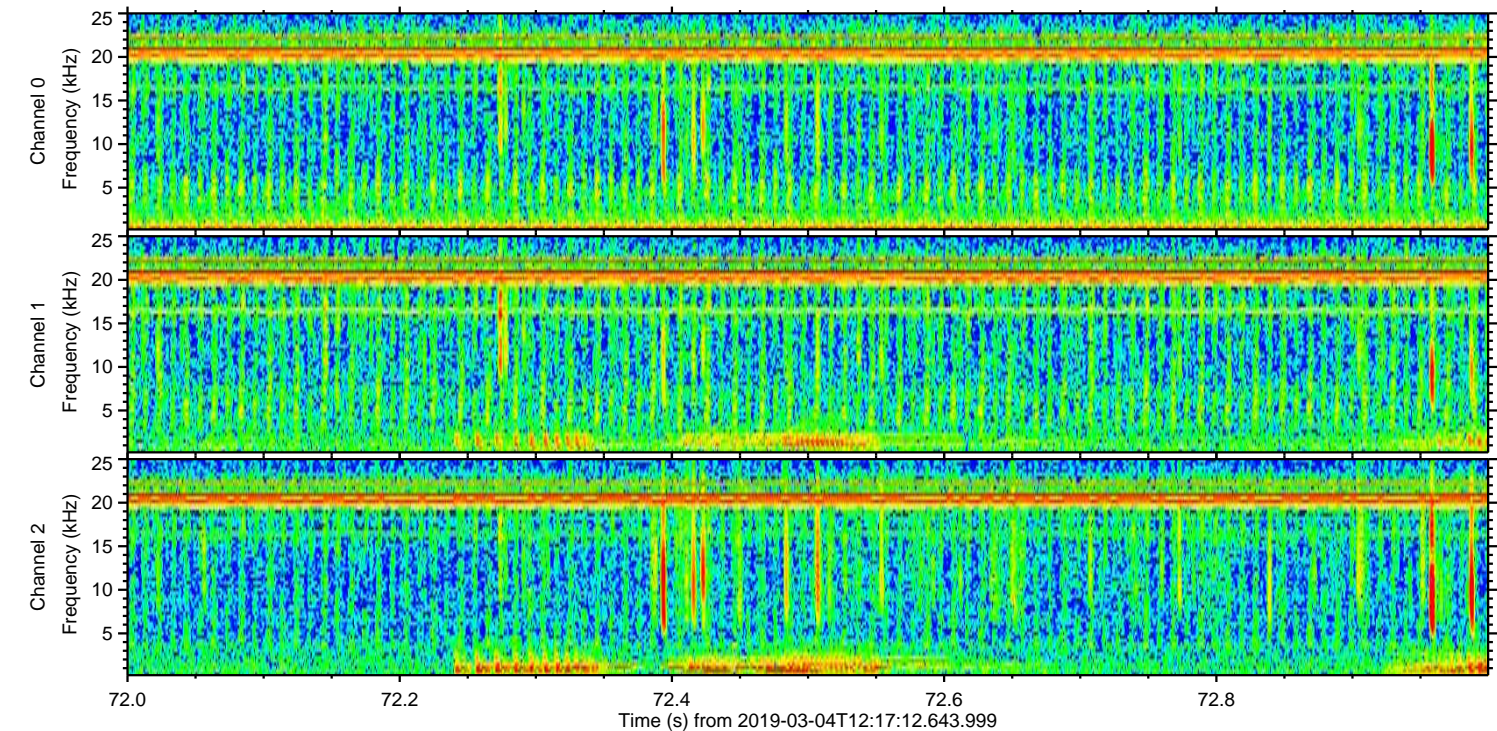
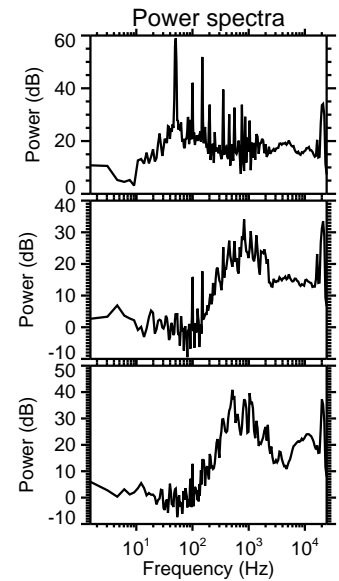
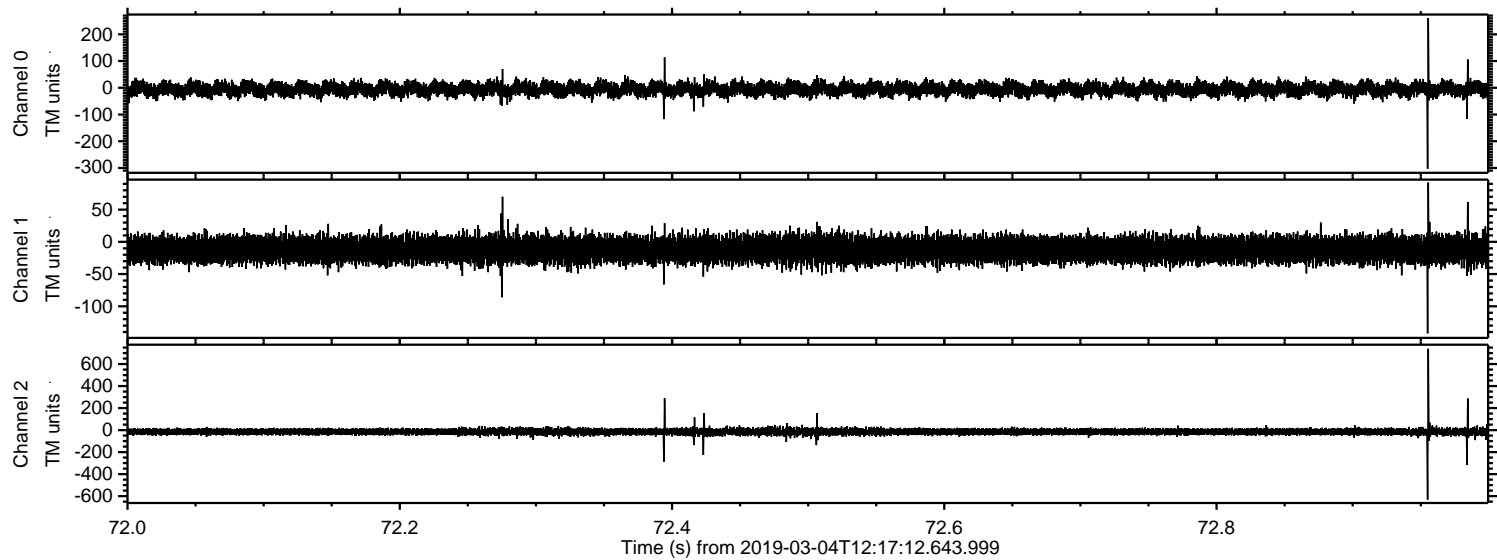


Processed Mon Mar 4 13:24:48 2019 by ELM ver.2012-10-06 from 001\_\_elm20190304\_121711\_\_dat00.bin



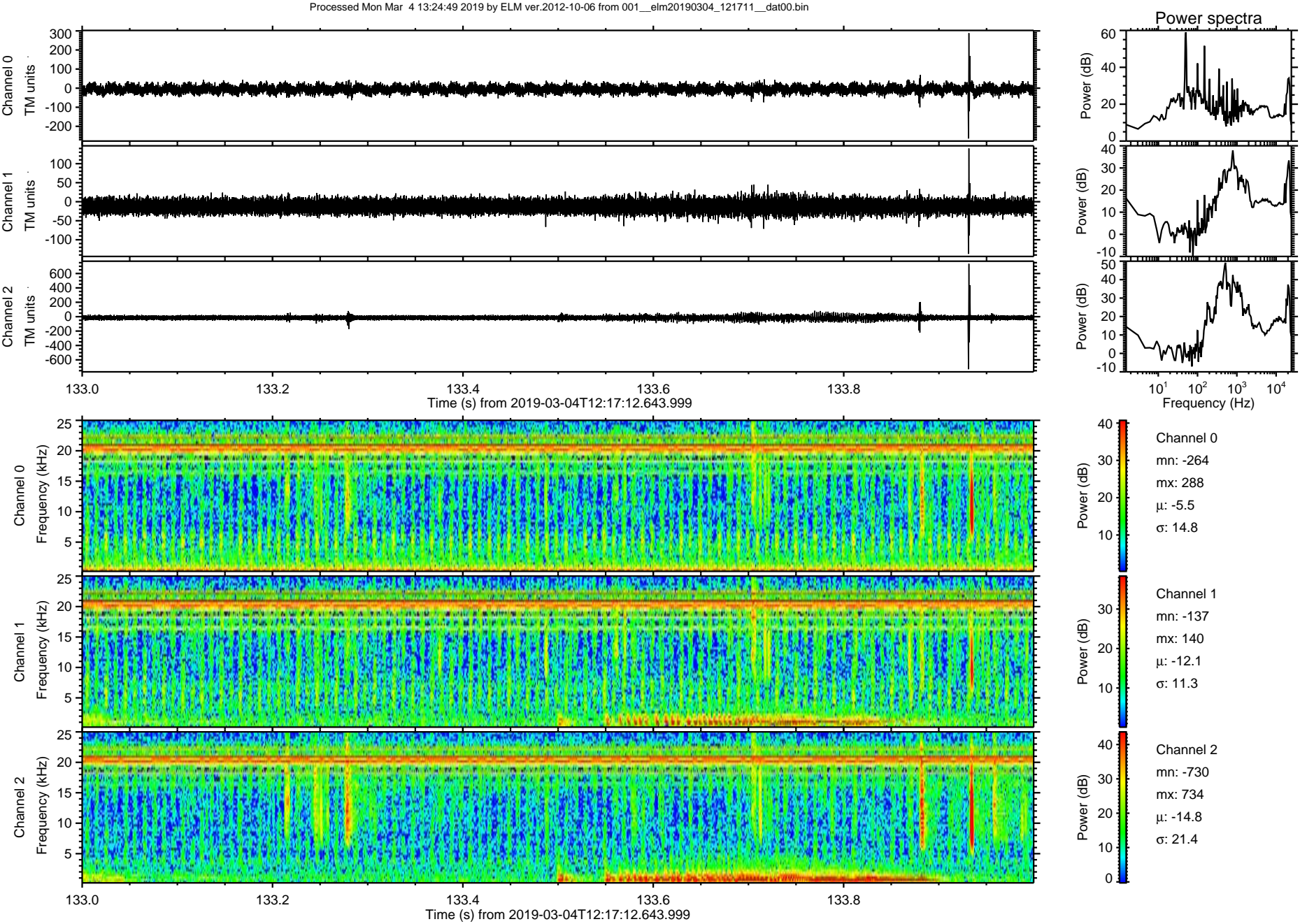


Processed Mon Mar 4 13:24:48 2019 by ELM ver.2012-10-06 from 001\_\_elm20190304\_121711\_\_dat00.bin





ELMAVAN 3D WAVEFORMS (Measured data sampled at 50 kHz) 51000 packets of 144 samples from 2019-03-04T12:17:12.643.999. Part 134/147





Processed Mon Mar 4 13:24:50 2019 by ELM ver.2012-10-06 from 001\_\_elm20190304\_121711\_\_dat00.bin

