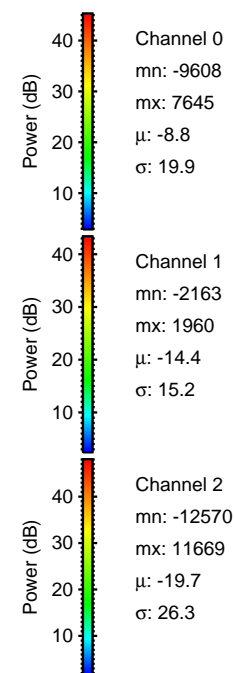
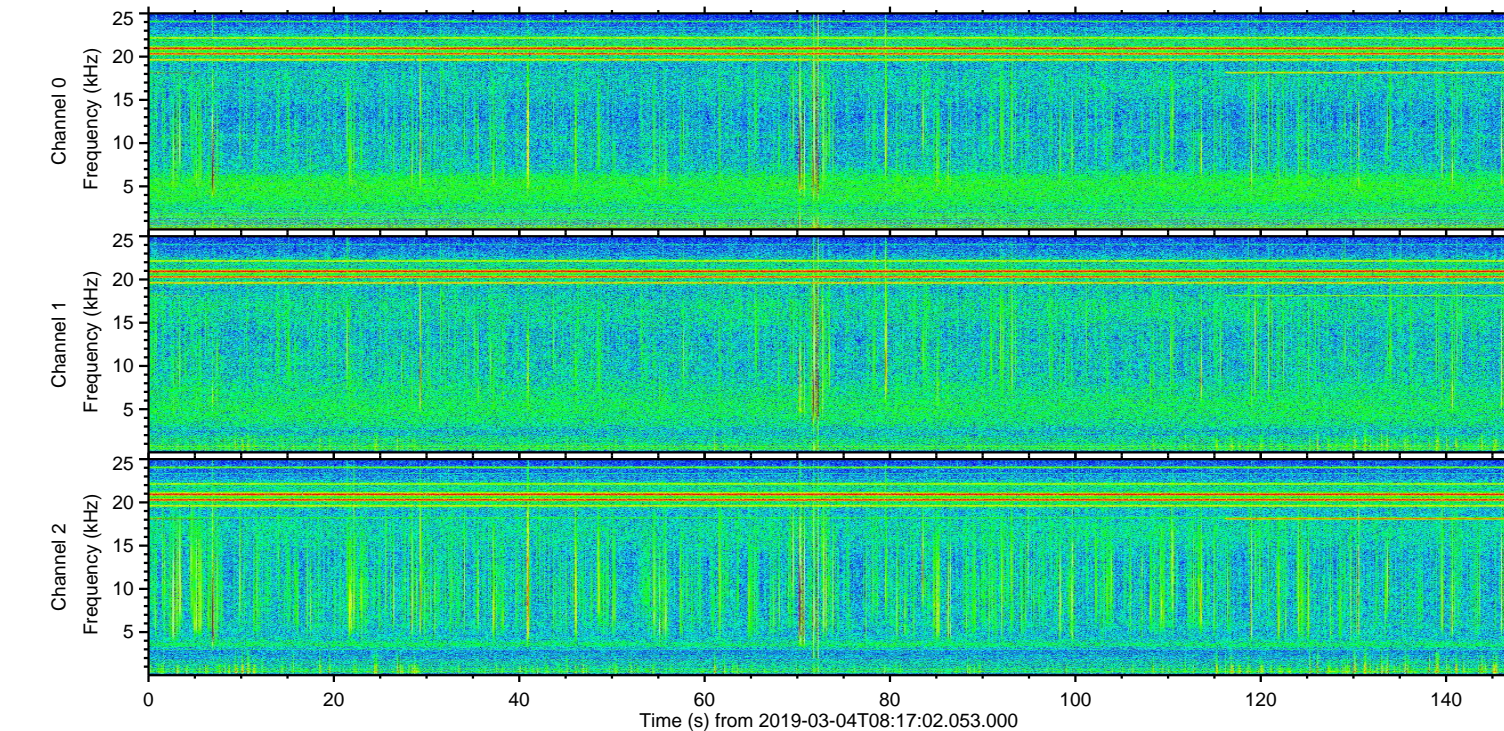
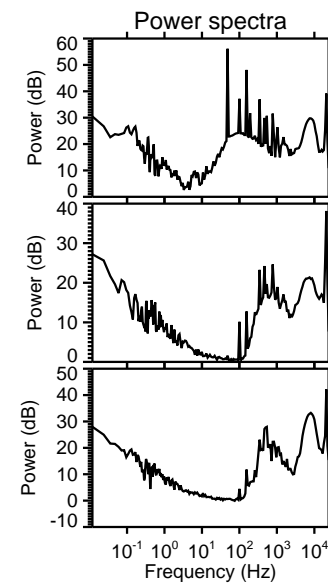
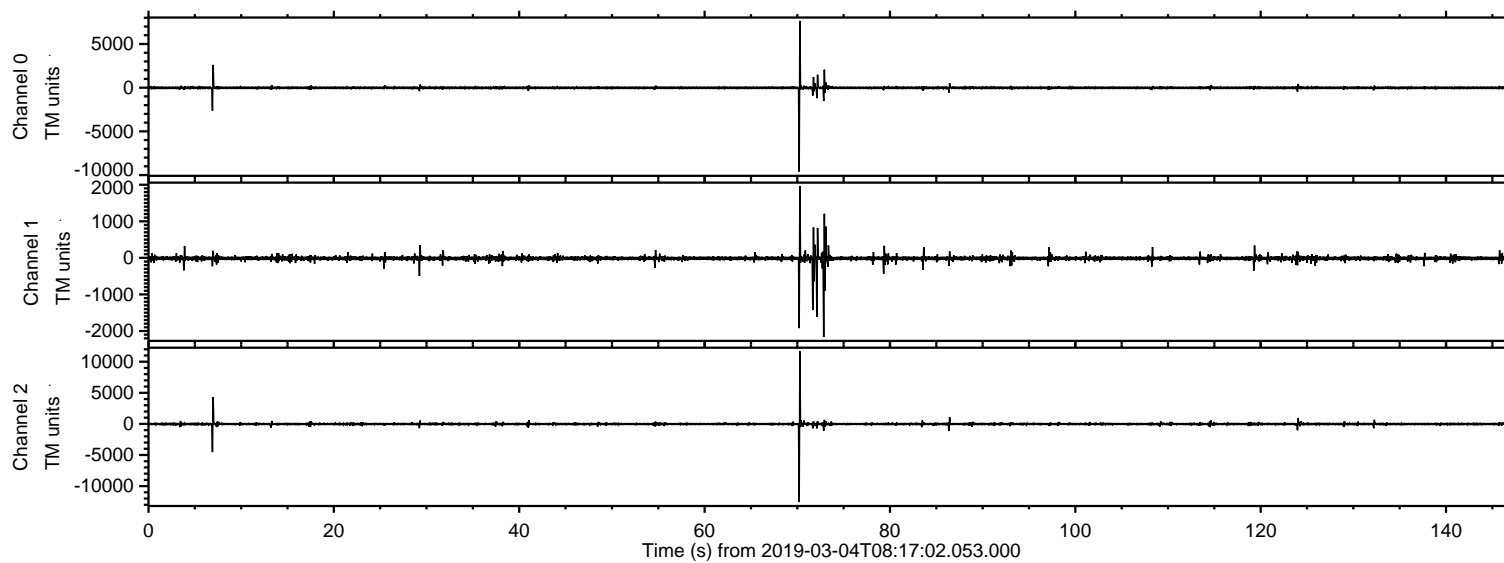


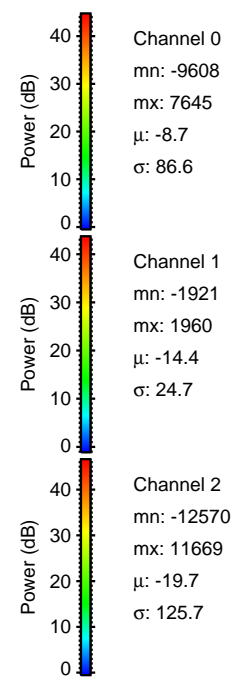
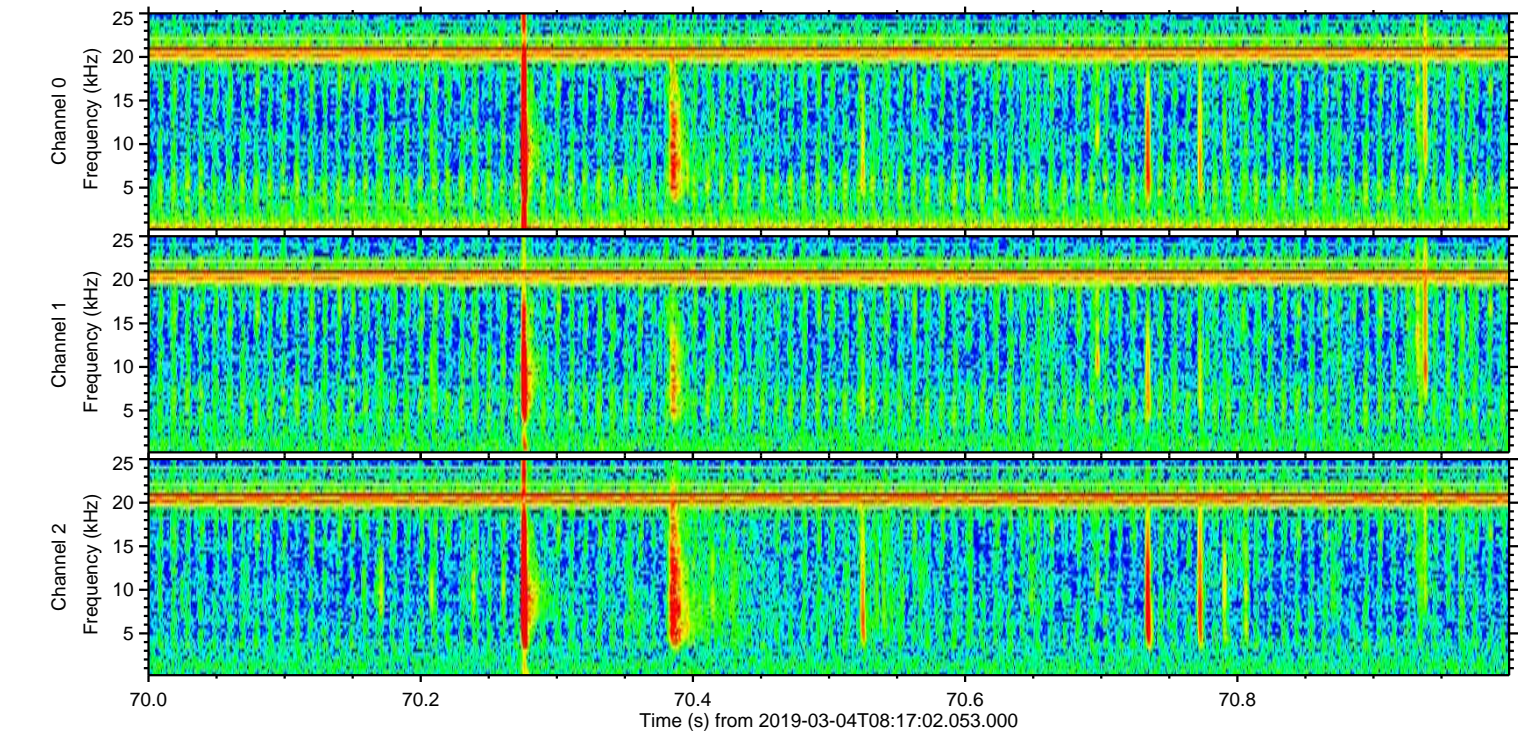
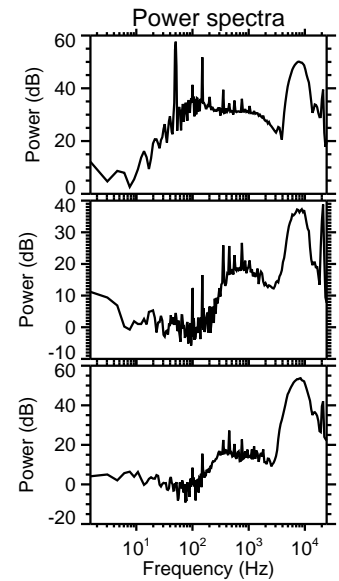
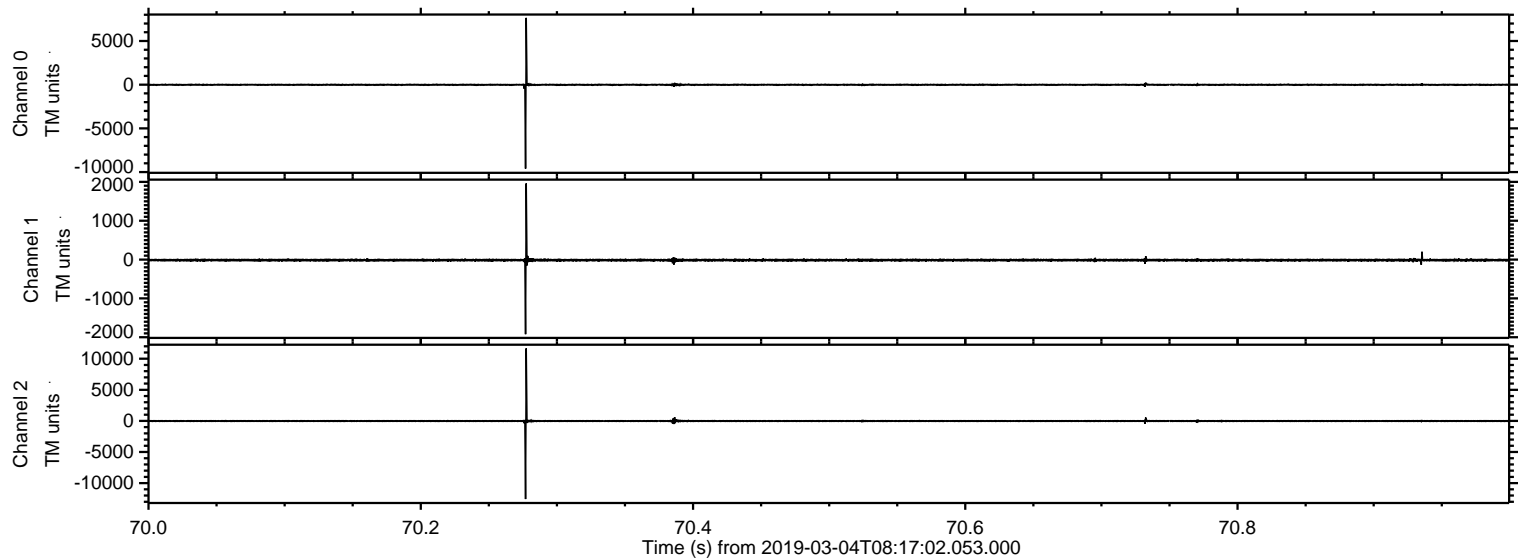
# ELMAVAN 3D WAVEFORMS (Measured data sampled at 50 kHz) 51000 packets of 144 samples from 2019-03-04T08:17:02.053.000.

Processed Mon Mar 4 09:24:44 2019 by ELM ver.2012-10-06 from 001\_\_elm20190304\_081701\_\_dat00.bin



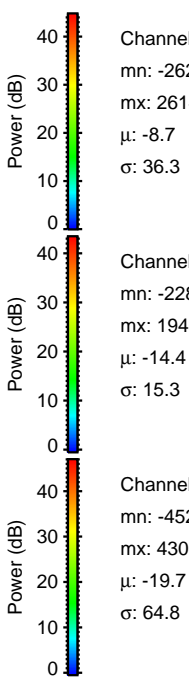
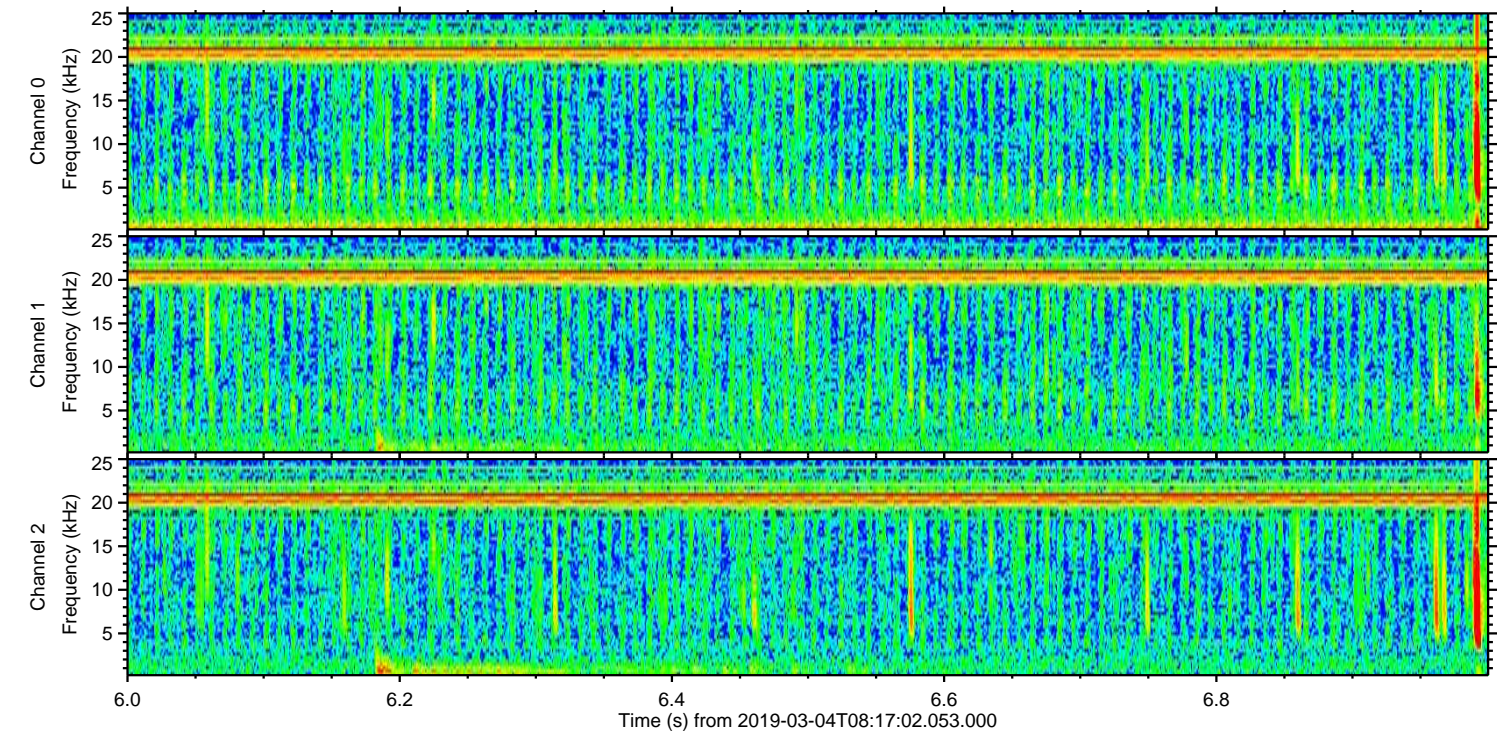
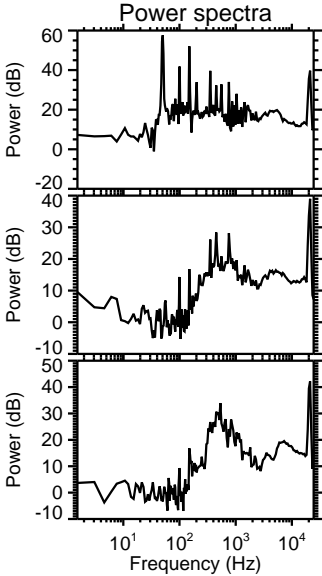
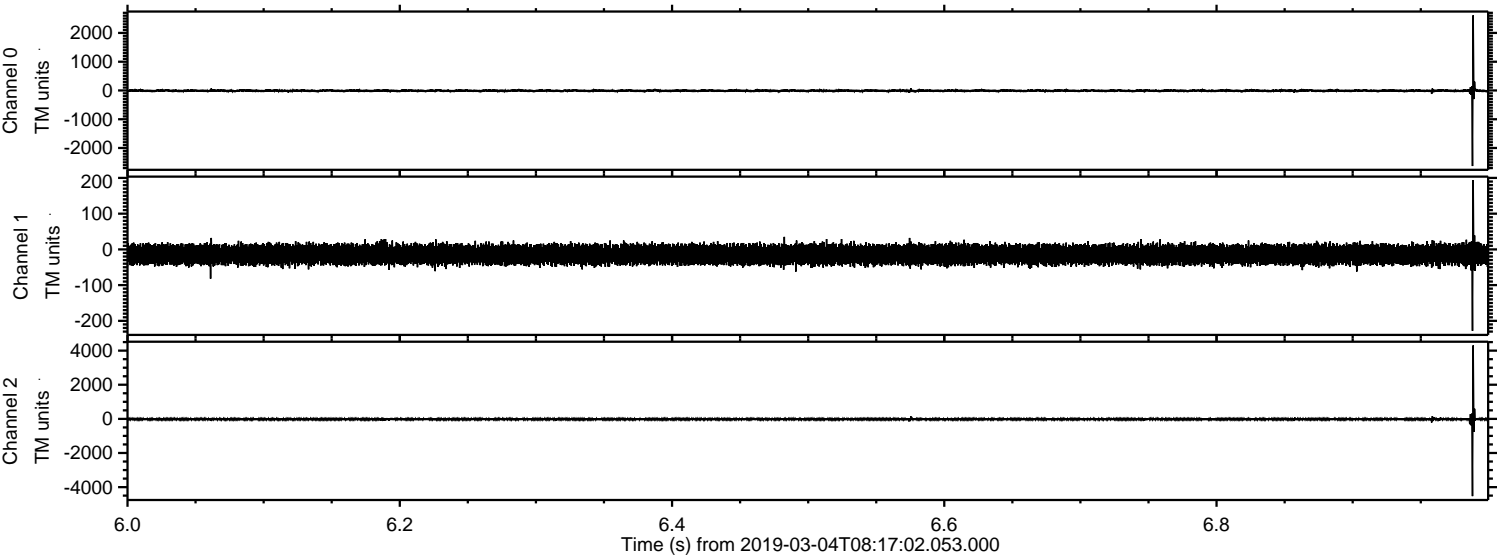


Processed Mon Mar 4 09:24:50 2019 by ELM ver.2012-10-06 from 001\_\_elm20190304\_081701\_\_dat00.bin





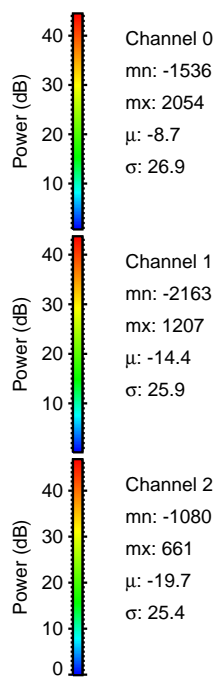
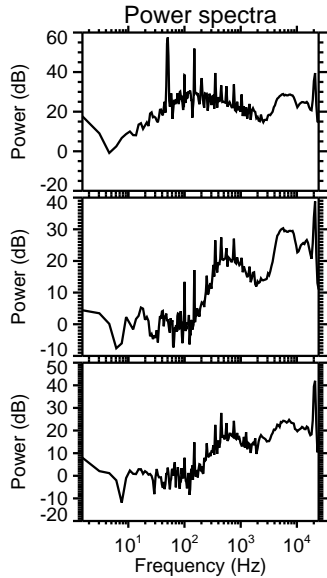
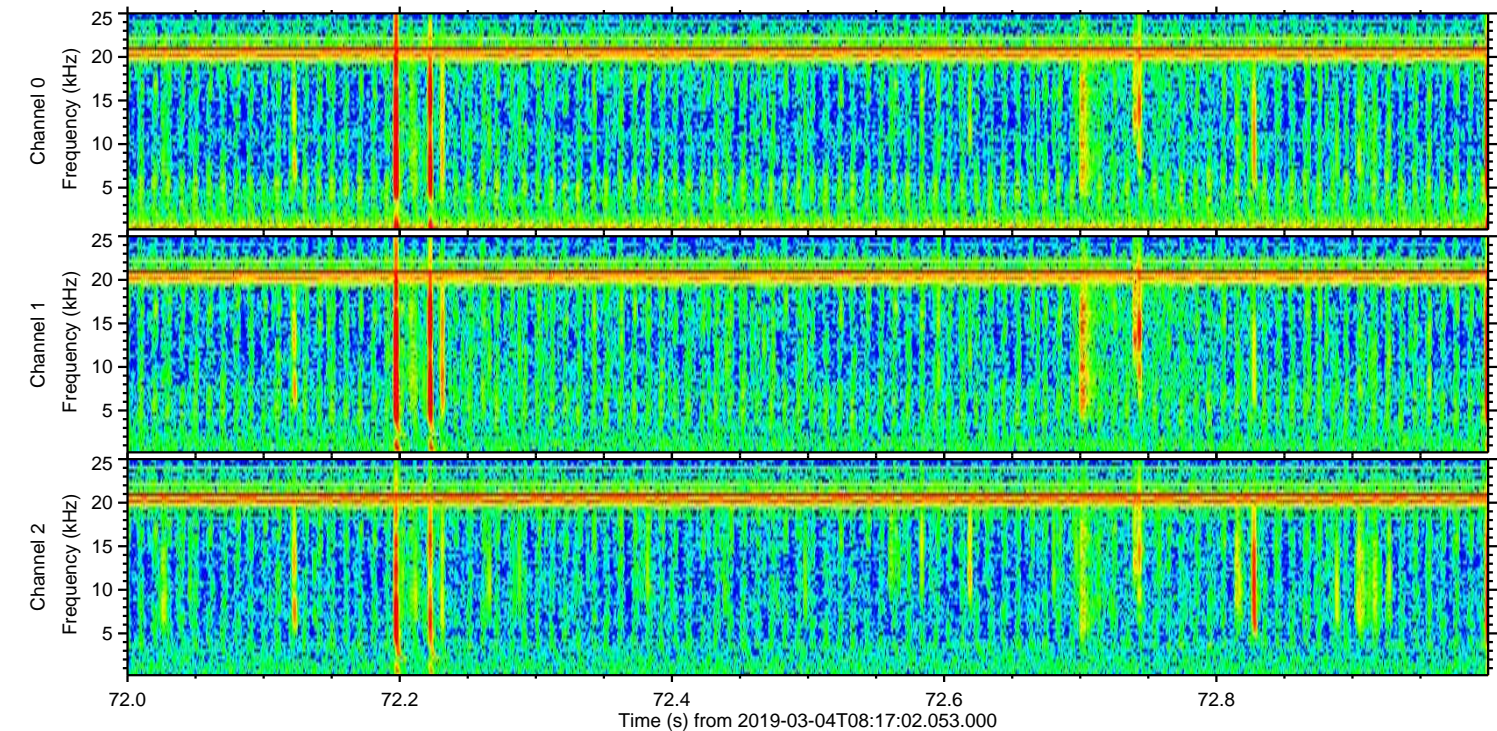
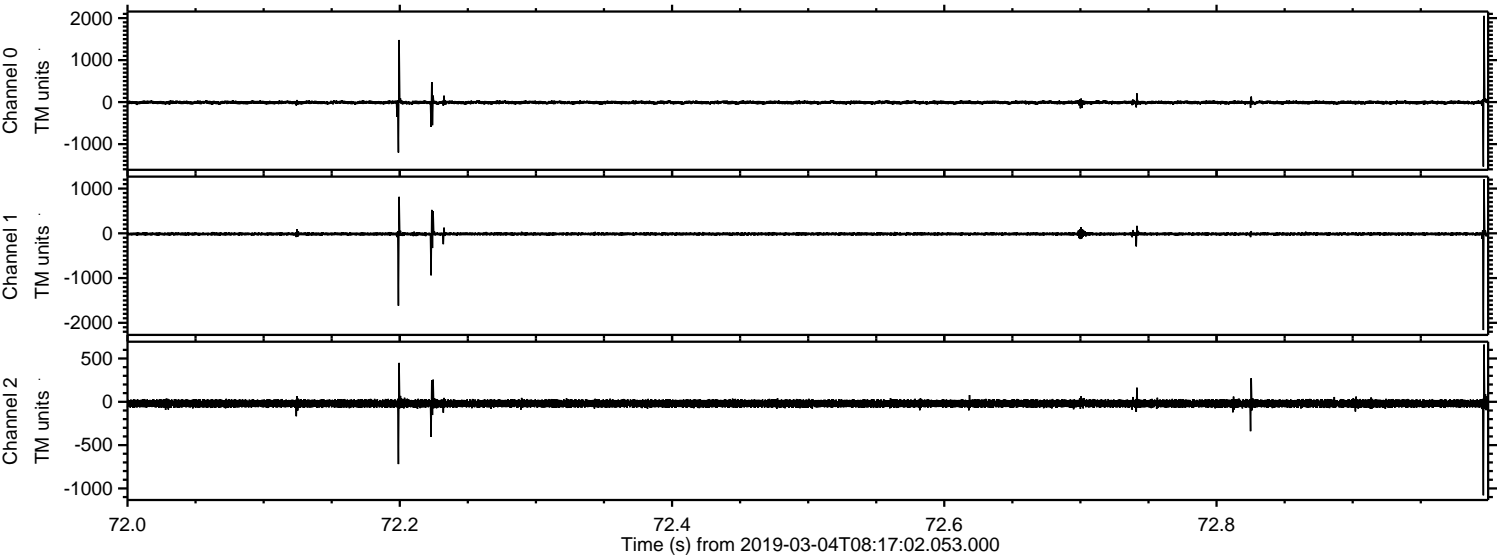
Processed Mon Mar 4 09:24:51 2019 by ELM ver.2012-10-06 from 001\_\_elm20190304\_081701\_\_dat00.bin





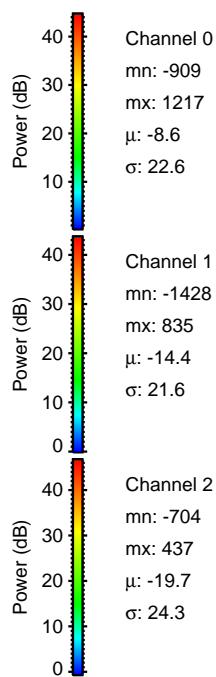
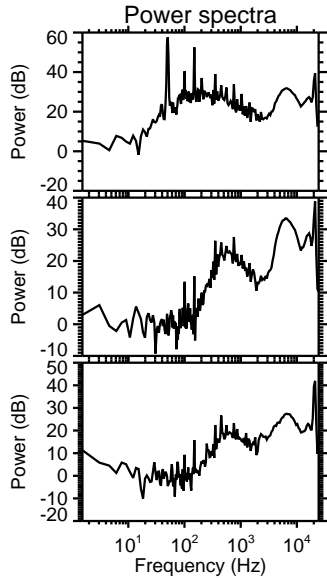
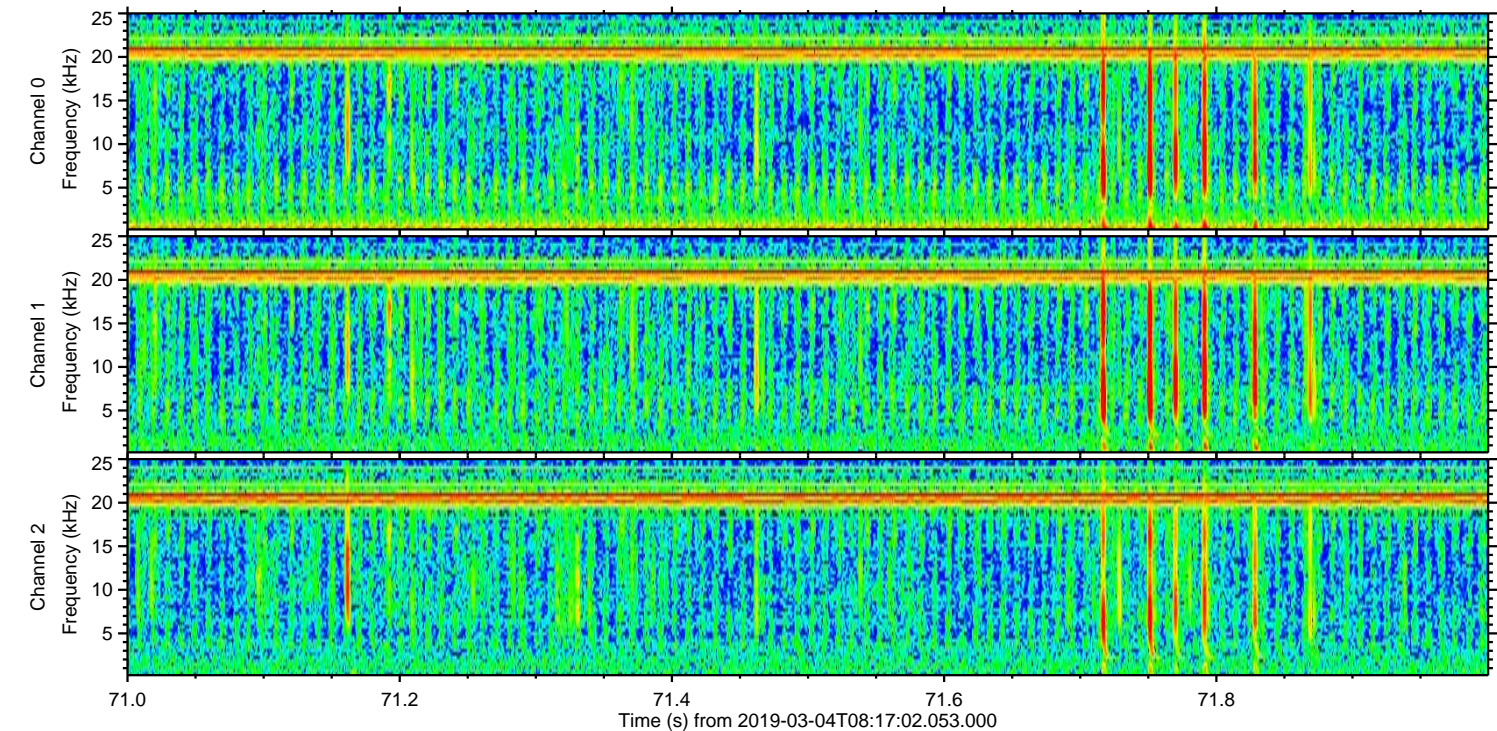
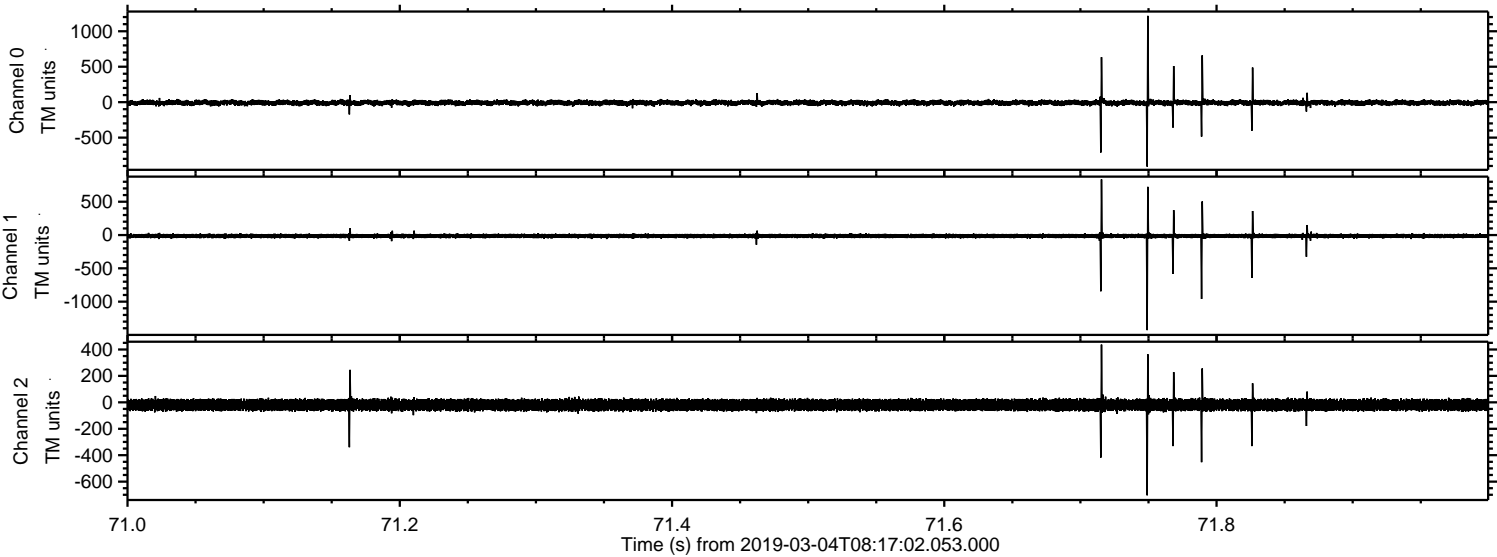
ELMAVAN 3D WAVEFORMS (Measured data sampled at 50 kHz) 51000 packets of 144 samples from 2019-03-04T08:17:02.053.000. Part 73/147

Processed Mon Mar 4 09:24:51 2019 by ELM ver.2012-10-06 from 001\_\_elm20190304\_081701\_\_dat00.bin



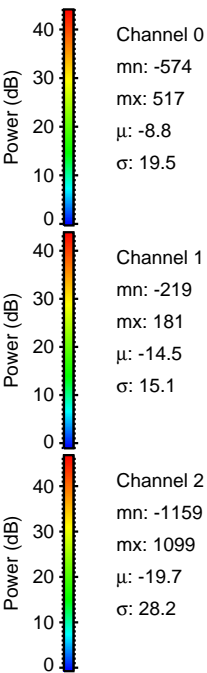
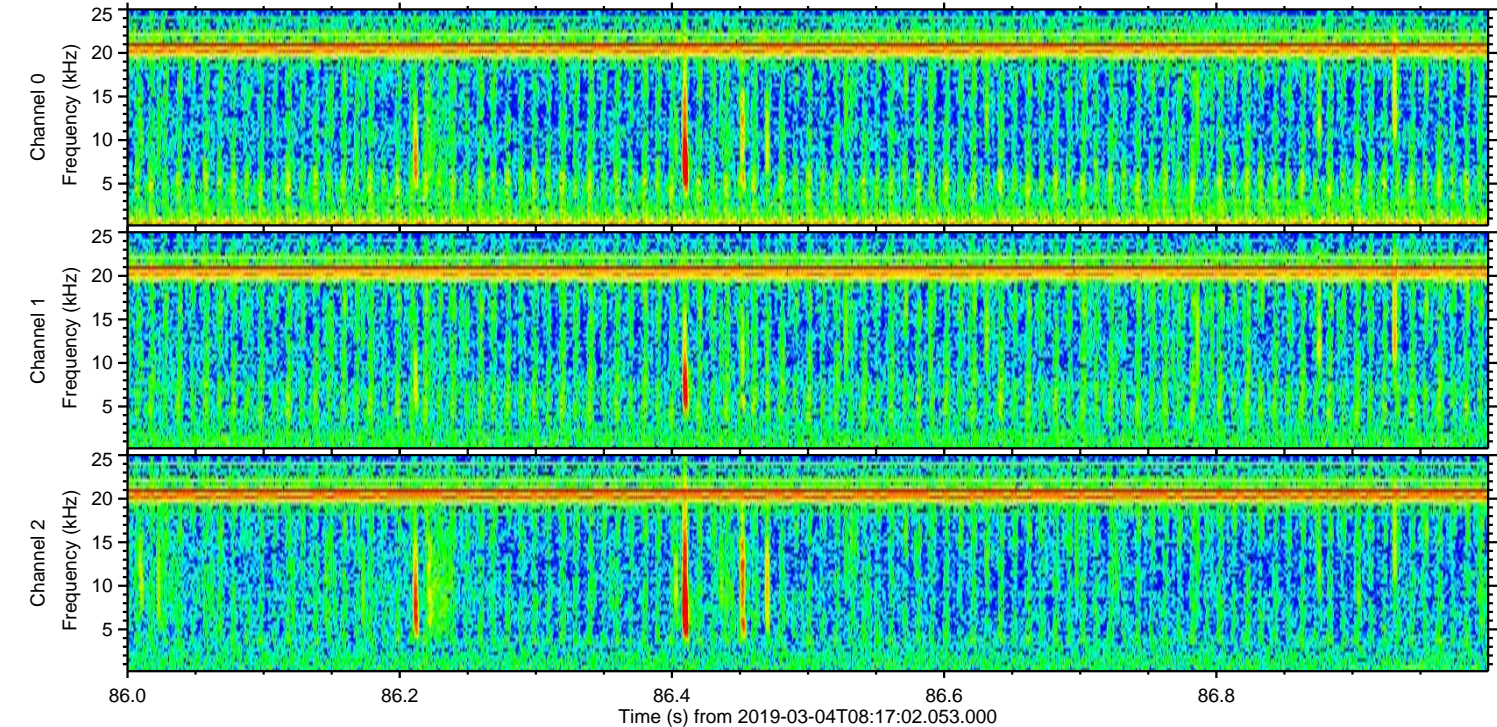
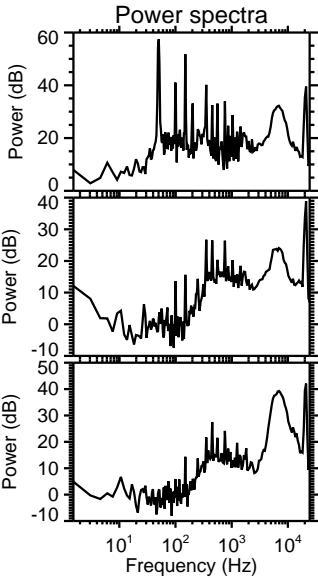
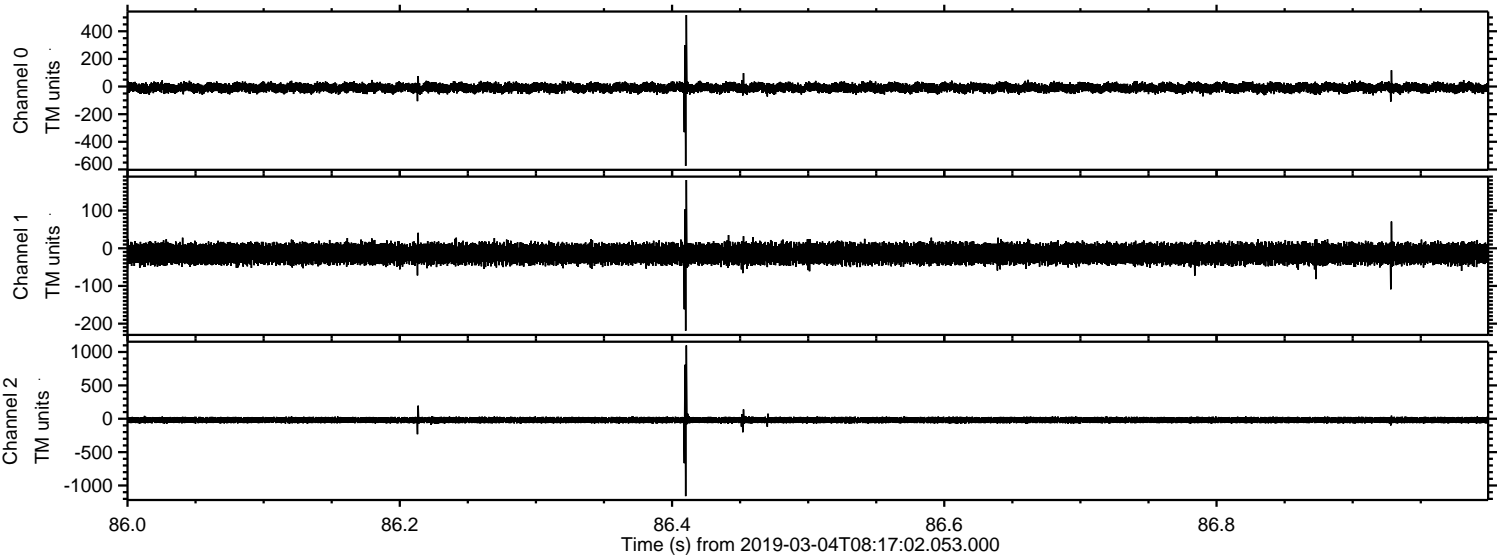


Processed Mon Mar 4 09:24:52 2019 by ELM ver.2012-10-06 from 001\_\_elm20190304\_081701\_\_dat00.bin





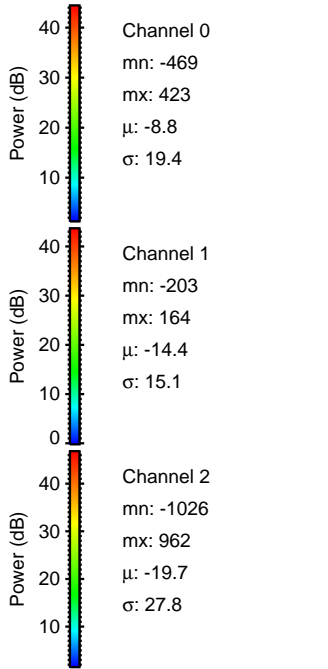
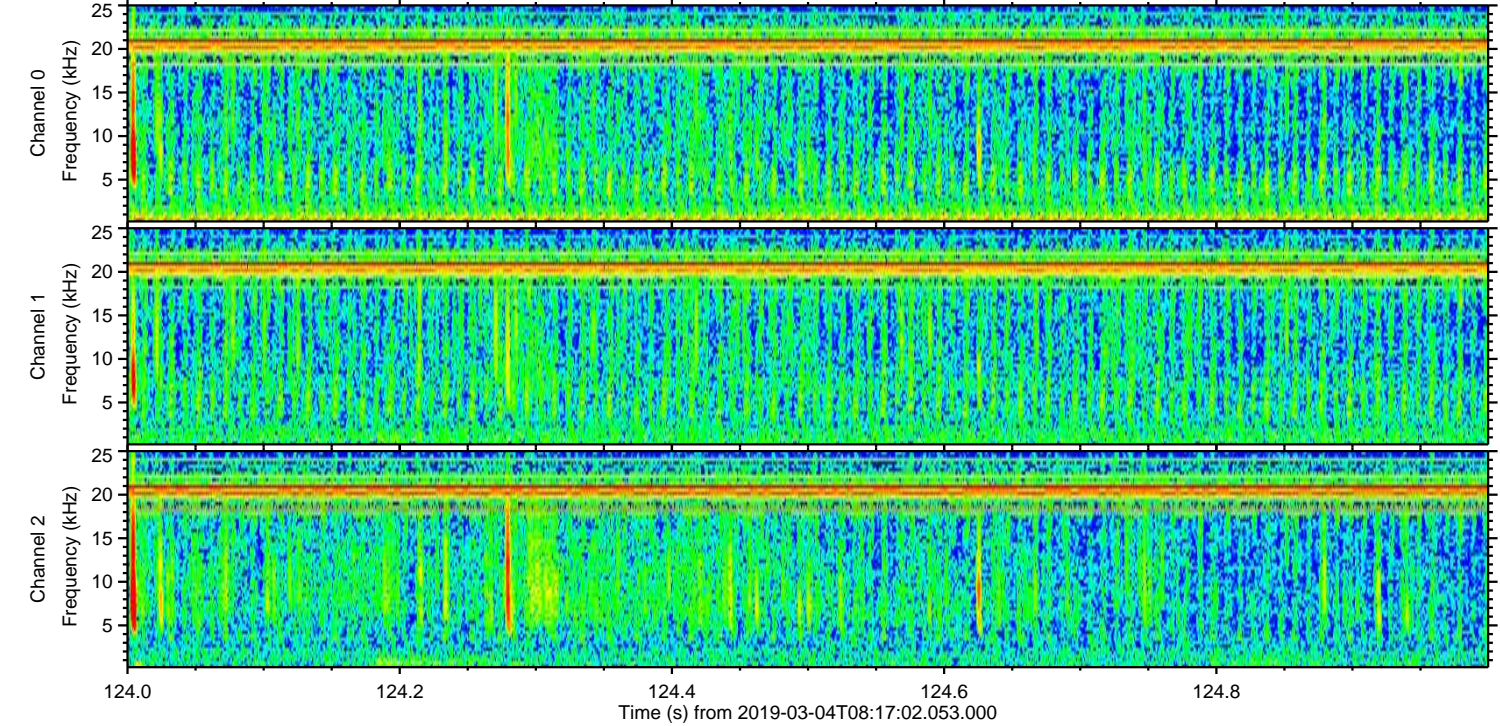
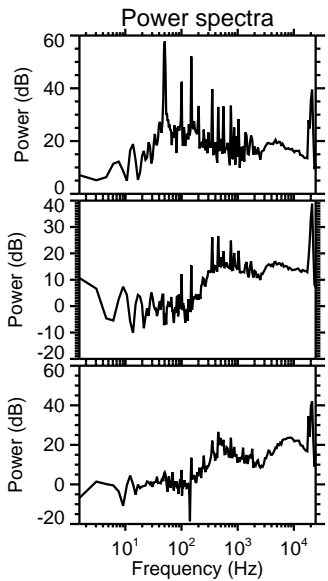
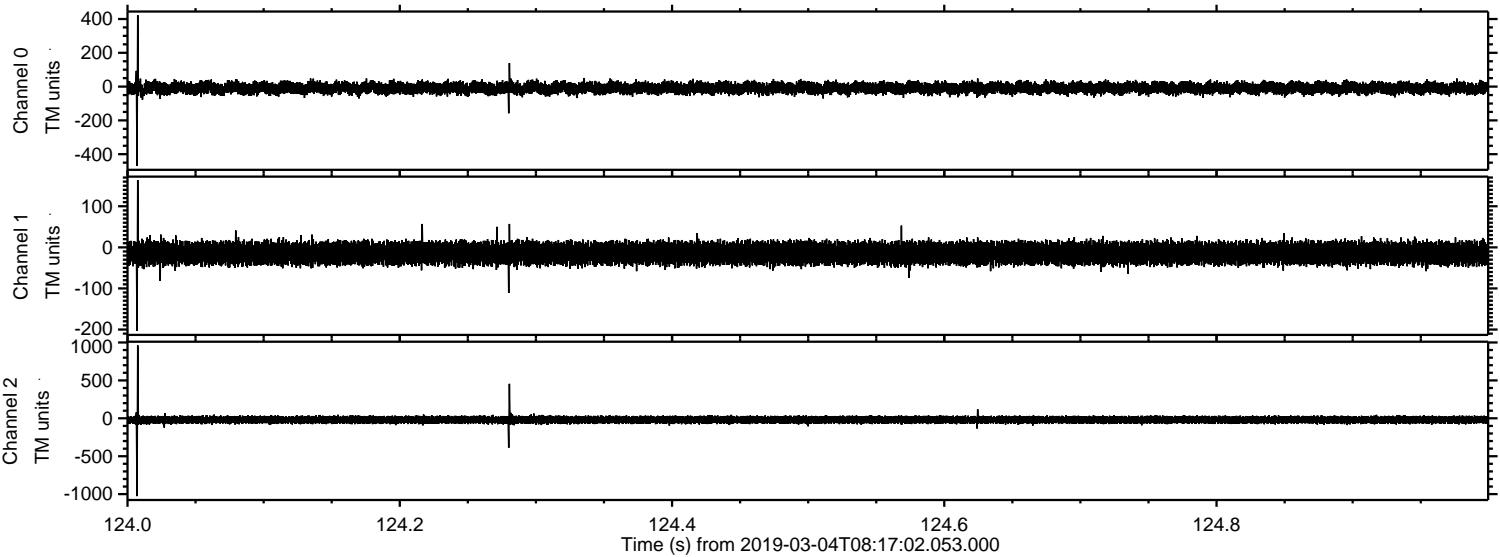
Processed Mon Mar 4 09:24:52 2019 by ELM ver.2012-10-06 from 001\_\_elm20190304\_081701\_\_dat00.bin





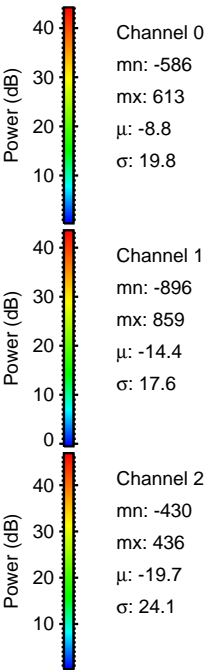
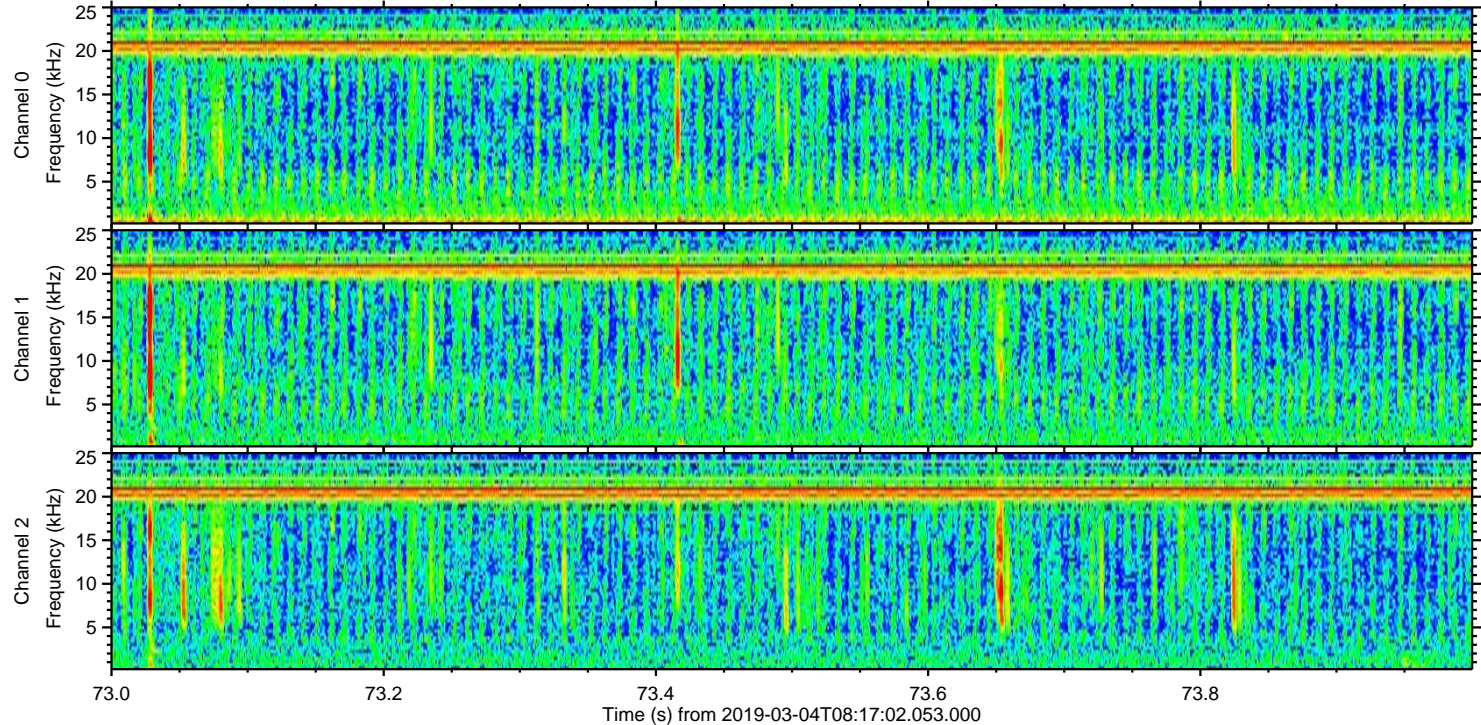
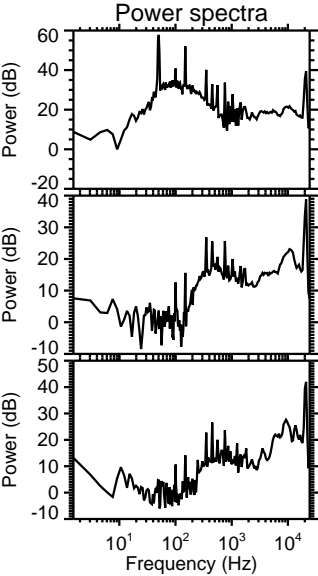
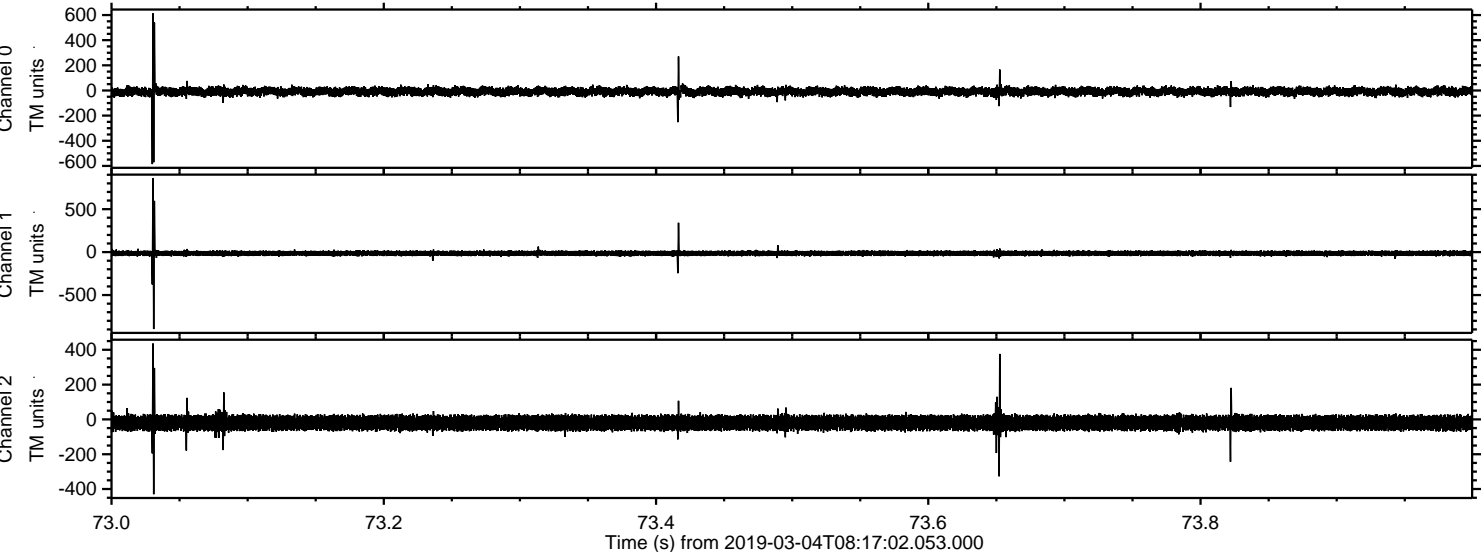
ELMAVAN 3D WAVEFORMS (Measured data sampled at 50 kHz) 51000 packets of 144 samples from 2019-03-04T08:17:02.053.000. Part 125/147

Processed Mon Mar 4 09:24:53 2019 by ELM ver.2012-10-06 from 001\_\_elm20190304\_081701\_\_dat00.bin



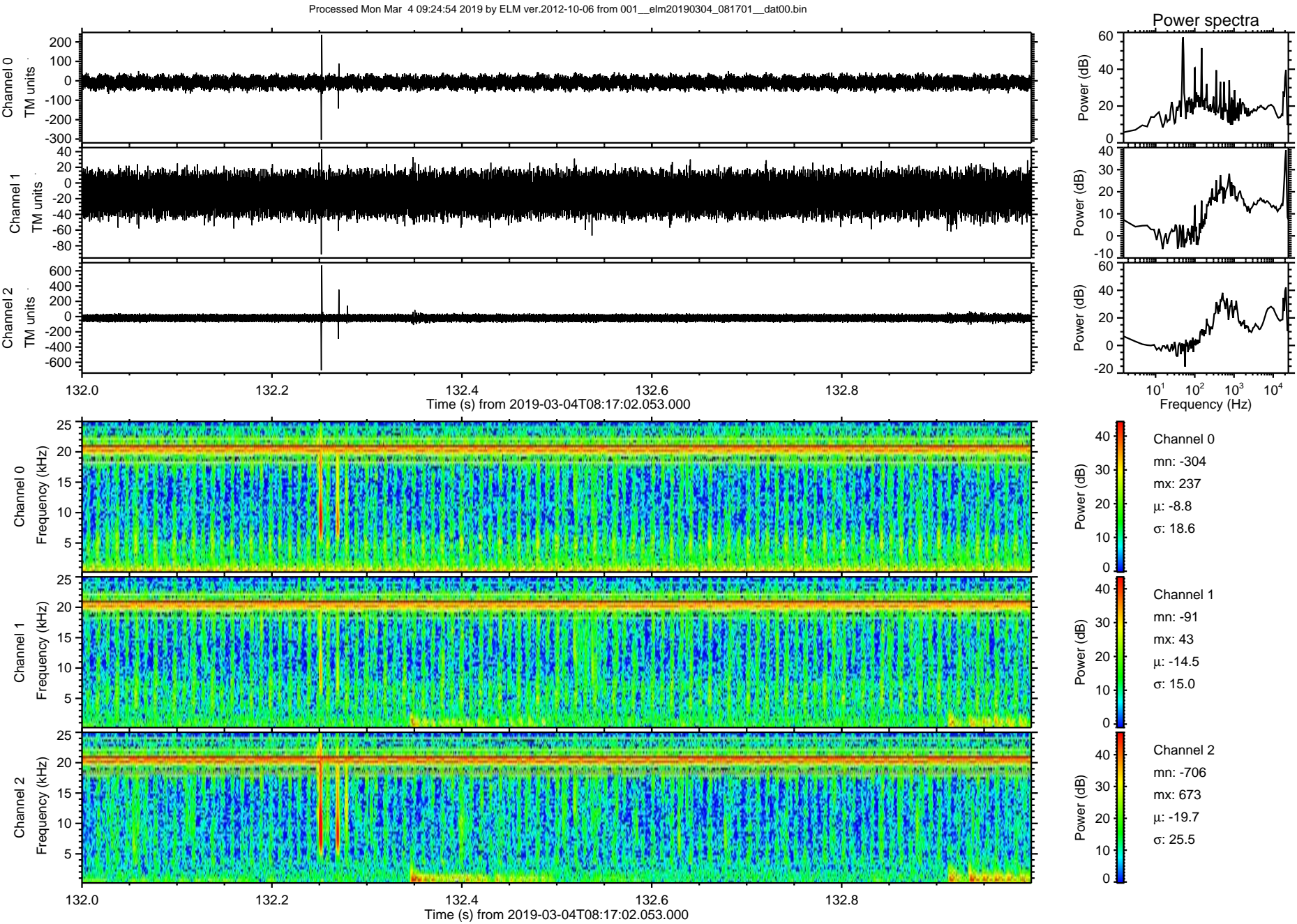


Processed Mon Mar 4 09:24:54 2019 by ELM ver.2012-10-06 from 001\_\_elm20190304\_081701\_\_dat00.bin





ELMAVAN 3D WAVEFORMS (Measured data sampled at 50 kHz) 51000 packets of 144 samples from 2019-03-04T08:17:02.053.000. Part 133/147





Processed Mon Mar 4 09:24:55 2019 by ELM ver.2012-10-06 from 001\_\_elm20190304\_081701\_\_dat00.bin

